

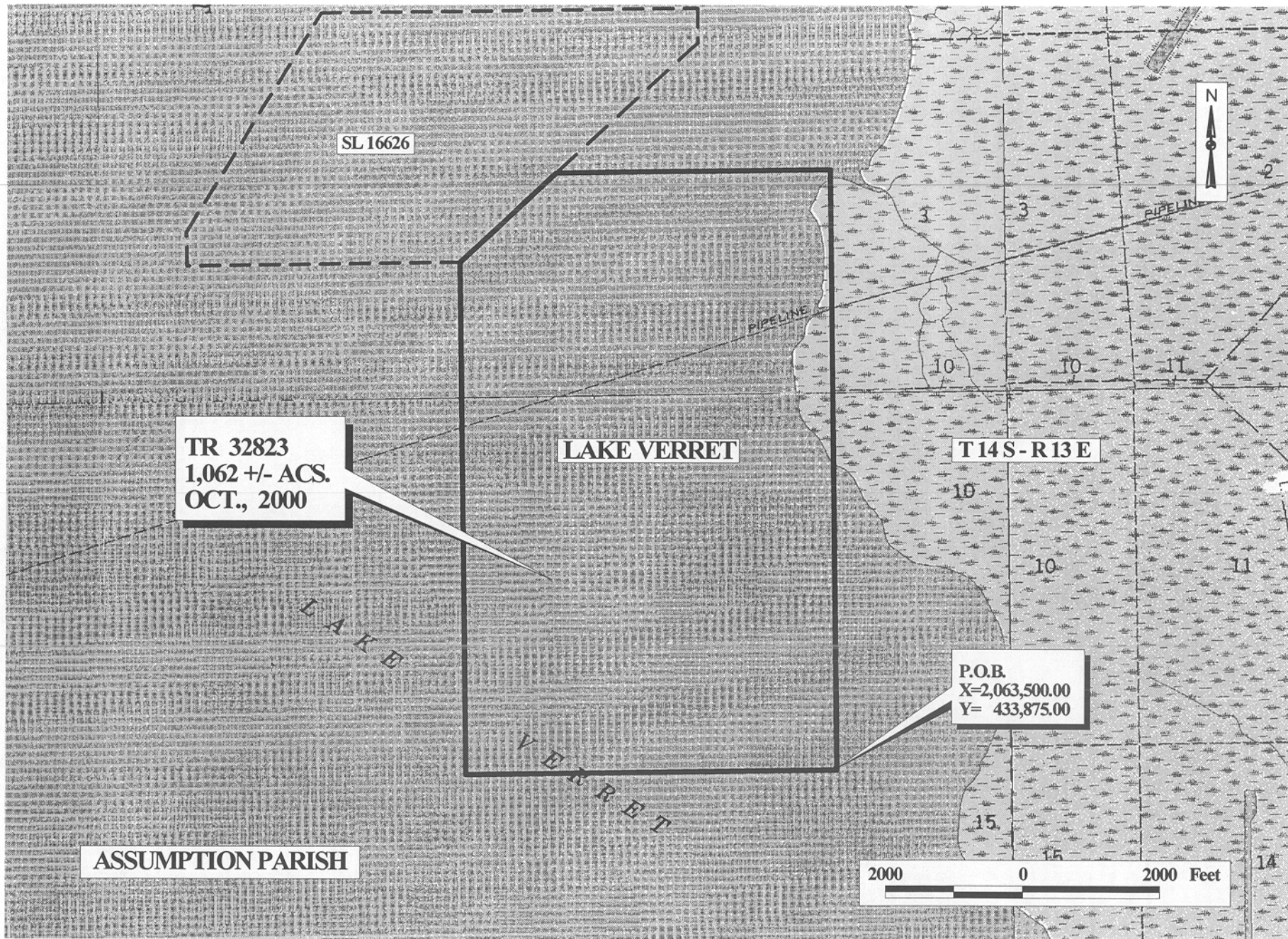
TRACT 32823 - Assumption Parish, Louisiana

All of the lands now or formerly constituting the beds and bottoms of all water bodies of every nature and description and all islands and other lands formed by accretion or reliction, except tax lands, owned by and not under mineral lease from the State of Louisiana on October 11, 2000, situated in Assumption Parish, Louisiana, within the following described boundaries: Beginning at a point having Coordinates of X = 2,063,500.00 and Y = 433,875.00; thence West 5,425.00 feet to a point having Coordinates of X = 2,058,075.00 and Y = 433,875.00; thence North 7,575.00 feet to the Southeasterly corner of State Lease No. 16626 having Coordinates of X = 2,058,075.00 and Y = 441,450.00; thence North 47 degrees 33 minutes 50 seconds East 1,926.58 feet along the Southeasterly boundary of said State Lease No. 16626 to a point having Coordinates of X = 2,059,496.88 and Y = 442,750.00; thence East 4,003.12 feet to a point having Coordinates of X = 2,063,500.00 and Y = 442,750.00; thence South 8,875.00 feet to the point of beginning, containing approximately 1,062 acres, as shown outlined in red on a plat on file in the Office of Mineral Resources, Department of Natural Resources. All bearings, distances and coordinates are based on Louisiana Coordinate System of 1927 (South Zone).

NOTE: The State of Louisiana does hereby reserve, and this lease shall be subject to, the imprescriptible right of surface use in the nature of a servitude in favor of the Department of Natural Resources, including its Offices and Commissions, for the sole purpose of implementing, constructing, servicing and maintaining approved coastal zone management and/or restoration projects. Utilization of any and all rights derived under this lease by the mineral lessee, its agents, successors or assigns, shall not interfere with nor hinder the reasonable surface use by the Department of Natural Resources, its Offices or Commissions, as hereinabove reserved.

Applicant: David J. Cornay

Bidder	Cash Payment	Price / Acre	Rental	Oil	Gas	Other



SL 16626

TR 32823
1,062 +/- ACS.
OCT., 2000

LAKE VERRET

T 14 S - R 13 E

P.O.B.
X=2,063,500.00
Y= 433,875.00

ASSUMPTION PARISH

2000 0 2000 Feet

OFFICIAL COPY
OFFICE OF MINERAL RESOURCES
DEPT. OF NATURAL RESOURCES
DO NOT REMOVE

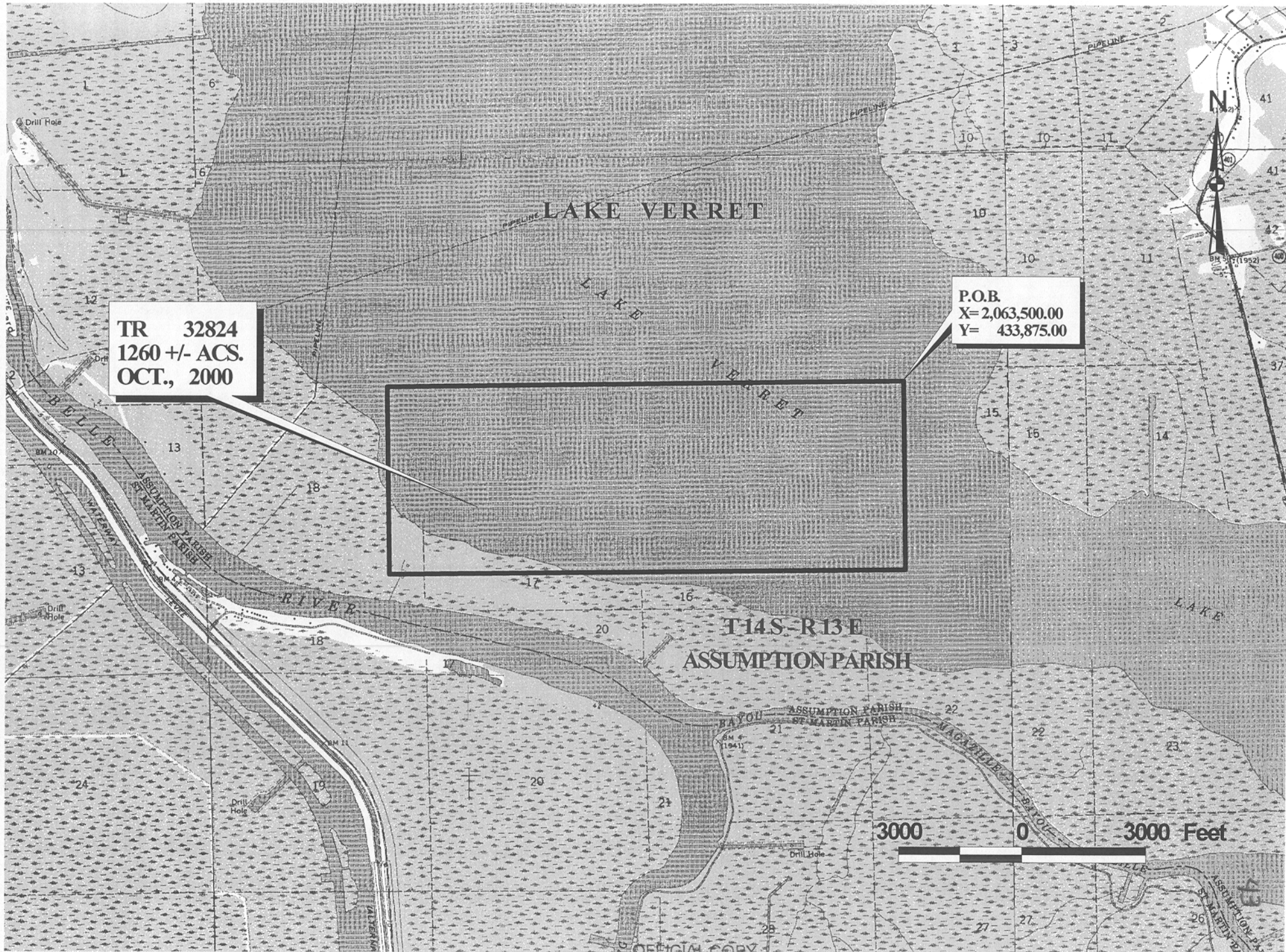
TRACT 32824 - Assumption Parish, Louisiana

All of the lands now or formerly constituting the beds and bottoms of all water bodies of every nature and description and all islands and other lands formed by accretion or reliction, except tax lands, owned by and not under mineral lease from the State of Louisiana on October 11, 2000, situated in Assumption Parish, Louisiana, within the following described boundaries: Beginning at the point having Coordinates of X = 2,063,500.00 and Y = 433,875.00; thence South 4,650.00 feet to a point having Coordinates of X = 2,063,500.00 and Y = 429,225.00; thence West 12,550.00 feet to a point having Coordinates of X = 2,050,950.00 and Y = 429,225.00; thence North 4,650.00 feet to a point having Coordinates of X = 2,050,950.00 and Y = 433,875.00; thence East 12,550.00 feet to the point of beginning, containing approximately **1,260 acres**, as shown outlined in red on a plat on file in the Office of Mineral Resources, Department of Natural Resources. All bearings, distances and coordinates are based on Louisiana Coordinate System of 1927 (South Zone).

NOTE: The State of Louisiana does hereby reserve, and this lease shall be subject to, the imprescriptible right of surface use in the nature of a servitude in favor of the Department of Natural Resources, including its Offices and Commissions, for the sole purpose of implementing, constructing, servicing and maintaining approved coastal zone management and/or restoration projects. Utilization of any and all rights derived under this lease by the mineral lessee, its agents, successors or assigns, shall not interfere with nor hinder the reasonable surface use by the Department of Natural Resources, its Offices or Commissions, as hereinabove reserved.

Applicant: David J. Cornay

Bidder	Cash Payment	Price / Acre	Rental	Oil	Gas	Other



TR 32824
1260 +/- ACS.
OCT., 2000

P.O.B.
X= 2,063,500.00
Y= 433,875.00

3000 0 3000 Feet