

NOT TO BE USED WITH A PORTION BID FOR INFORMATIONAL PURPOSES ONLY

TR 32821

P.O.B.
X=2,058,075.00
Y=438,100.00

TR 32823

TR 32822

TR 32824

P.O.B.
X=2,063,500.00
Y=433,875.00

ASSUMPTION PARISH
T-14-S R-12-E

T-14-S R-13-E

MAP NOT TO SCALE

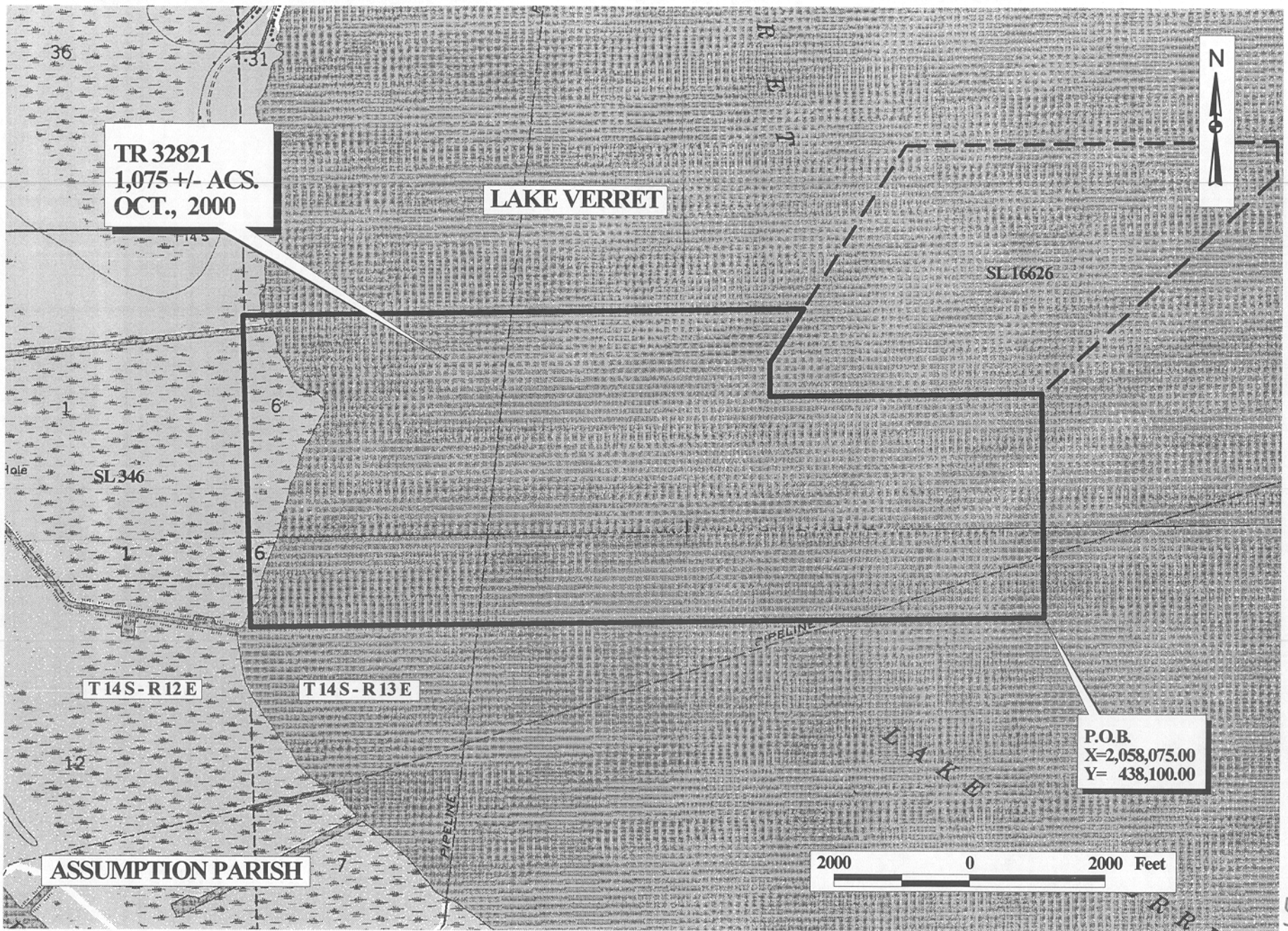
TRACT 32821 - Assumption Parish, Louisiana

All of the lands now or formerly constituting the beds and bottoms of all water bodies of every nature and description and all islands and other lands formed by accretion or reliction, except tax lands, owned by and not under mineral lease from the State of Louisiana on October 11, 2000, situated in Assumption Parish, Louisiana, within the following described boundaries: Beginning at a point having Coordinates of X = 2,058,075.00 and Y = 438,100.00; thence West approximately 11,690 feet to a point on the Eastern boundary of State Lease No. 346, as amended, to a point having a Coordinate of Y = 438,100.00; thence Northerly along the Eastern boundary of said State Lease No. 346 to a point having a Coordinate of Y = 442,750.00; thence East approximately 8,260 feet to a point on the Western boundary of State Lease No. 16626 having Coordinates of X = 2,054,579.67 and Y = 442,750.00; thence along the boundary of said State Lease No. 16626 the following courses and distances: South 32 degrees 14 minutes 44 seconds West 945.88 feet, South 500.00 feet and East 4,000.00 feet to its Southeast corner having Coordinates of X = 2,058,075.00 and Y = 441,450.00; thence South 3,350.00 feet to the point of beginning, containing approximately 1,075 acres, as shown outlined in red on a plat on file in the Office of Mineral Resources, Department of Natural Resources. All bearings, distances and coordinates are based on Louisiana Coordinate System of 1927 (South Zone).

NOTE: The State of Louisiana does hereby reserve, and this lease shall be subject to, the imprescriptible right of surface use in the nature of a servitude in favor of the Department of Natural Resources, including its Offices and Commissions, for the sole purpose of implementing, constructing, servicing and maintaining approved coastal zone management and/or restoration projects. Utilization of any and all rights derived under this lease by the mineral lessee, its agents, successors or assigns, shall not interfere with nor hinder the reasonable surface use by the Department of Natural Resources, its Offices or Commissions, as hereinabove reserved.

Applicant: David J. Cornay

Bidder	Cash Payment	Price / Acre	Rental	Oil	Gas	Other



TR 32821
1,075 +/- ACS.
OCT., 2000

LAKE VERRET

SL 16626

SL 346

T14S-R12E

T14S-R13E

ASSUMPTION PARISH

P.O.B.
X=2,058,075.00
Y= 438,100.00

2000 0 2000 Feet

OFFICIAL COPY
OFFICE OF MINERAL RESOURCES
DEPT. OF NATURAL RESOURCES
DO NOT REMOVE

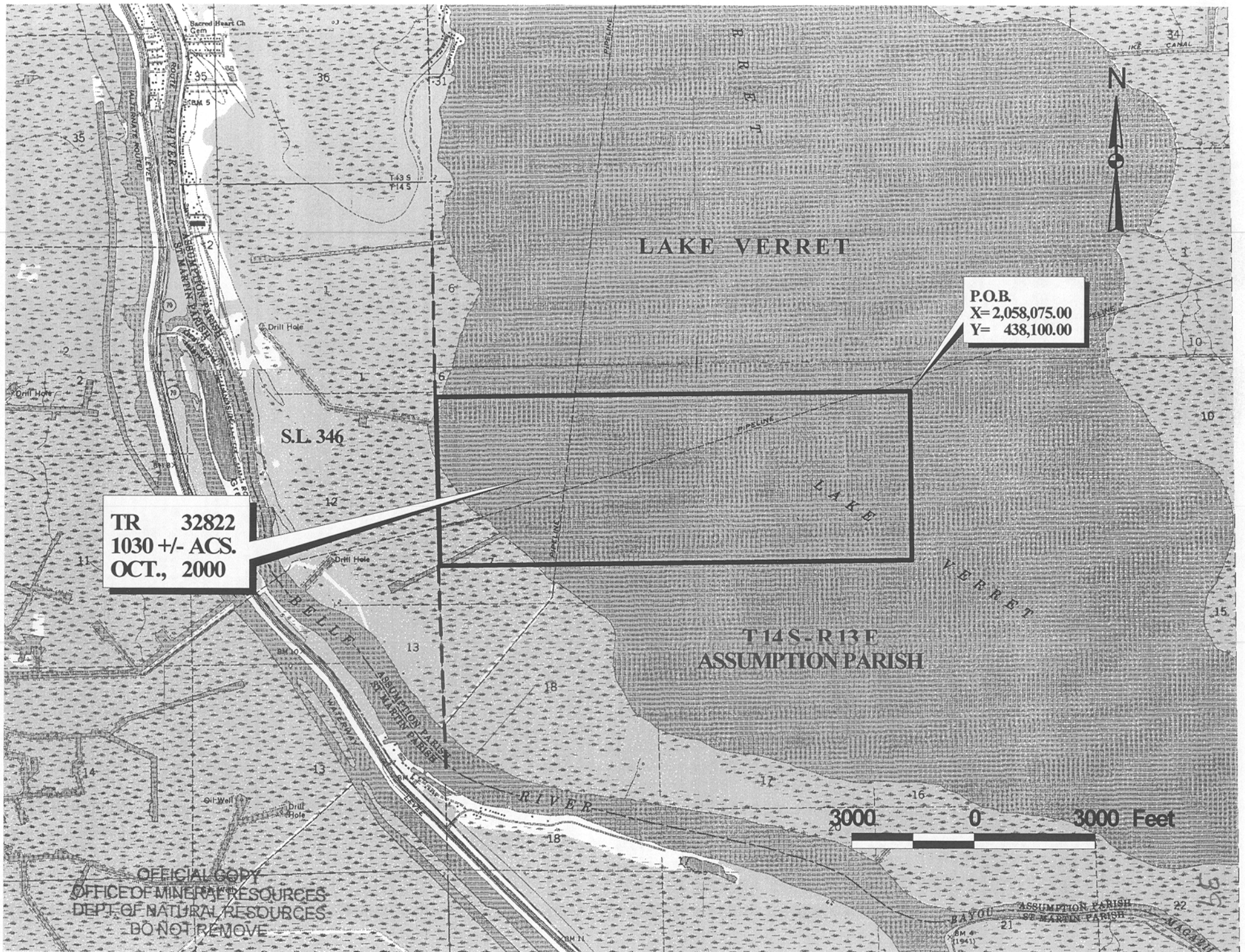
TRACT 32822 - Assumption Parish, Louisiana

All of the lands now or formerly constituting the beds and bottoms of all water bodies of every nature and description and all islands and other lands formed by accretion or reliction, except tax lands, owned by and not under mineral lease from the State of Louisiana on October 11, 2000, situated in Assumption Parish, Louisiana, within the following described boundaries: Beginning at a point having Coordinates of X = 2,058,075.00 and Y = 438,100.00; thence South 4,225.00 feet to a point having Coordinates of X = 2,058,075.00 and Y = 433,875.00; thence West approximately 11,630 feet to a point on the Eastern boundary of State Lease No. 346, as amended, having a Coordinate of Y = 433,875.00; thence Northerly along the East boundary of said State Lease No. 346 to a point having a Coordinate of Y = 438,100.00; thence East approximately 11,690 feet to the point of beginning, containing approximately **1,030 acres**, as shown outlined in red on a plat on file in the Office of Mineral Resources, Department of Natural Resources. All bearings, distances and coordinates are based on Louisiana Coordinate System of 1927 (South Zone).

NOTE: The State of Louisiana does hereby reserve, and this lease shall be subject to, the imprescriptible right of surface use in the nature of a servitude in favor of the Department of Natural Resources, including its Offices and Commissions, for the sole purpose of implementing, constructing, servicing and maintaining approved coastal zone management and/or restoration projects. Utilization of any and all rights derived under this lease by the mineral lessee, its agents, successors or assigns, shall not interfere with nor hinder the reasonable surface use by the Department of Natural Resources, its Offices or Commissions, as hereinabove reserved.

Applicant: David J. Cornay

Bidder	Cash Payment	Price / Acre	Rental	Oil	Gas	Other



TR 32822
1030 +/- ACS.
OCT., 2000

P.O.B.
X= 2,058,075.00
Y= 438,100.00

S.L. 346

T43S-R13E
ASSUMPTION PARISH

3000 0 3000 Feet

OFFICIAL COPY
OFFICE OF MINERAL RESOURCES
DEPT. OF NATURAL RESOURCES
DO NOT REMOVE