

T16-R8E

T16S-R9E

TR 32819

P.O.B.  
X=1,912,546.46  
Y= 357,700.00

S.L.16585

SL 368

S.L.340

S.L.16586

1935 SHORELINE

EAST COTE BLANCHE BAY

E. LAKE SAND FIELD

ST. MARY PARISH

NOT TO BE USED WITH A FORCE MAIN DRAIN FOR INFORMATIONAL PURPOSES ONLY!

MAP NOT TO SCALE

**TRACT 32819 - St. Mary Parish, Louisiana**

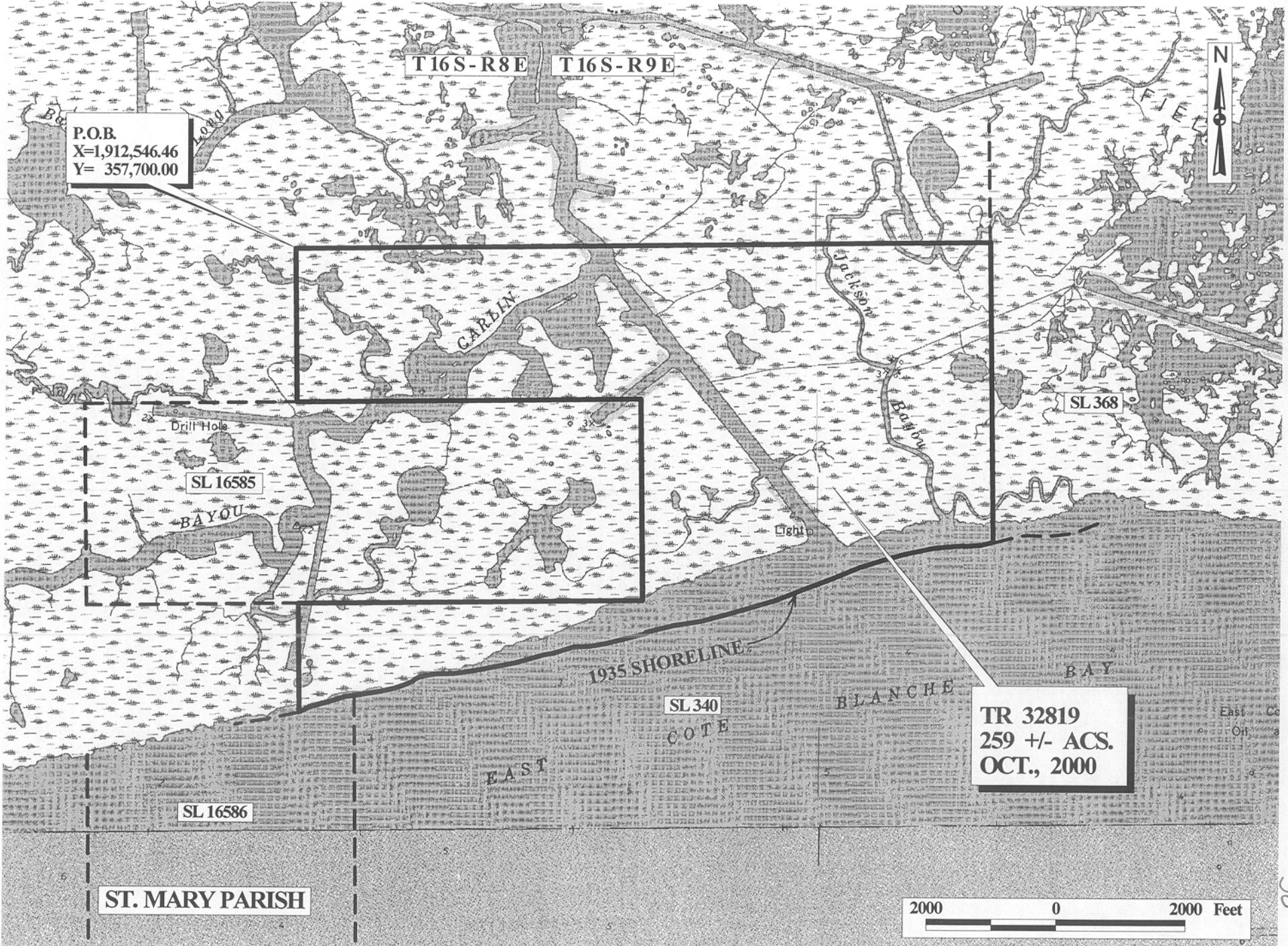
All of the lands now or formerly constituting the beds and bottoms of all water bodies of every nature and description and all islands and other lands formed by accretion or reliction, except tax lands, owned by and not under mineral lease from the State of Louisiana on October 11, 2000, situated in St. Mary Parish, Louisiana, within the following described boundaries: Beginning at a point having Coordinates of X = 1,912,546.46 and Y = 357,700.00; thence East approximately 10,746 feet to a point on the West boundary of State Lease No. 368; thence Southerly approximately 4,692 feet on the West boundary of said State Lease No. 368 to a point on the Northern boundary of State Lease No. 340, as amended; thence Southwesterly on the Northern boundary of said State Lease No. 340 to its Northwest corner, also being a point on the East Boundary of State Lease No. 16586; Thence Northerly on said East Boundary of said State Lease to its Northeast corner; Thence Southwesterly on said Northern Boundary of said State Lease No. 16586 to an intersection with a North-South line having a Coordinate of X = 1,912,546.46; thence North approximately 1,680 feet to a point on the South line of State Lease No. 16585 having Coordinates of X = 1,912,546.46 and Y = 352,140.00; thence on the boundaries of said State Lease No. 16585 the following courses: East 5,323.54 feet, North 3,160.00 feet and West 5,323.54 feet to a point having Coordinates of X = 1,912,546.46 and Y = 355,300.00; thence North 2,400.00 feet to the point of beginning, **LESS AND EXCEPT**, if any, those portions of State Lease Nos. 340, as amended, 368 and 16586 that may lie within the above described tract, containing approximately **259 acres**, as shown outlined in red on a plat on file in the Office of Mineral Resources, Department of Natural Resources. All bearings, distances and coordinates are based on Louisiana Coordinate System of 1927 (South Zone).

NOTE: The above tract is located in or near an oyster restricted area and all operations in such area must be conducted in strict conformity with the stipulations and/or regulations of the Louisiana Department of Wildlife and Fisheries.

NOTE: The State of Louisiana does hereby reserve, and this lease shall be subject to, the imprescriptible right of surface use in the nature of a servitude in favor of the Department of Natural Resources, including its Offices and Commissions, for the sole purpose of implementing, constructing, servicing and maintaining approved coastal zone management and/or restoration projects. Utilization of any and all rights derived under this lease by the mineral lessee, its agents, successors or assigns, shall not interfere with nor hinder the reasonable surface use by the Department of Natural Resources, its Offices or Commissions, as hereinabove reserved.

Applicant: South Louisiana Minerals, Inc.

Bidder	Cash Payment	Price / Acre	Rental	Oil	Gas	Other



P.O.B.  
X=1,912,546.46  
Y= 357,700.00

T16S-R8E T16S-R9E



Drill Hole  
SL 16585

SL 368

BAYOU

CARLIN

Carlin Bayou

1935 SHORELINE

SL 340

TR 32819  
259 +/- ACS.  
OCT., 2000

BLANCHE

SL 16586

ST. MARY PARISH



OFFICIAL COPY  
OFFICE OF MINERAL RESOURCES  
DEPT. OF NATURAL RESOURCES  
DO NOT REMOVE

F & A Map Services  
Division of PI

T-13-S R-12-E

T-13-S R-13-E

PIERRE PASS FIELD

EAST LAKE VERRET

NORTHWEST OAKLEY FIELD

LAKE VERRET

GRAVEYARD ISLAND FIELD

TR 32820

P.O.B.  
X= 2,054,000.00  
Y= 451,950.00

NOT TO BE USED WITH A PORTION BID  
FOR INFORMATIONAL PURPOSES ONLY

MAP NOT TO SCALE

**TRACT 32820 - Assumption Parish, Louisiana**

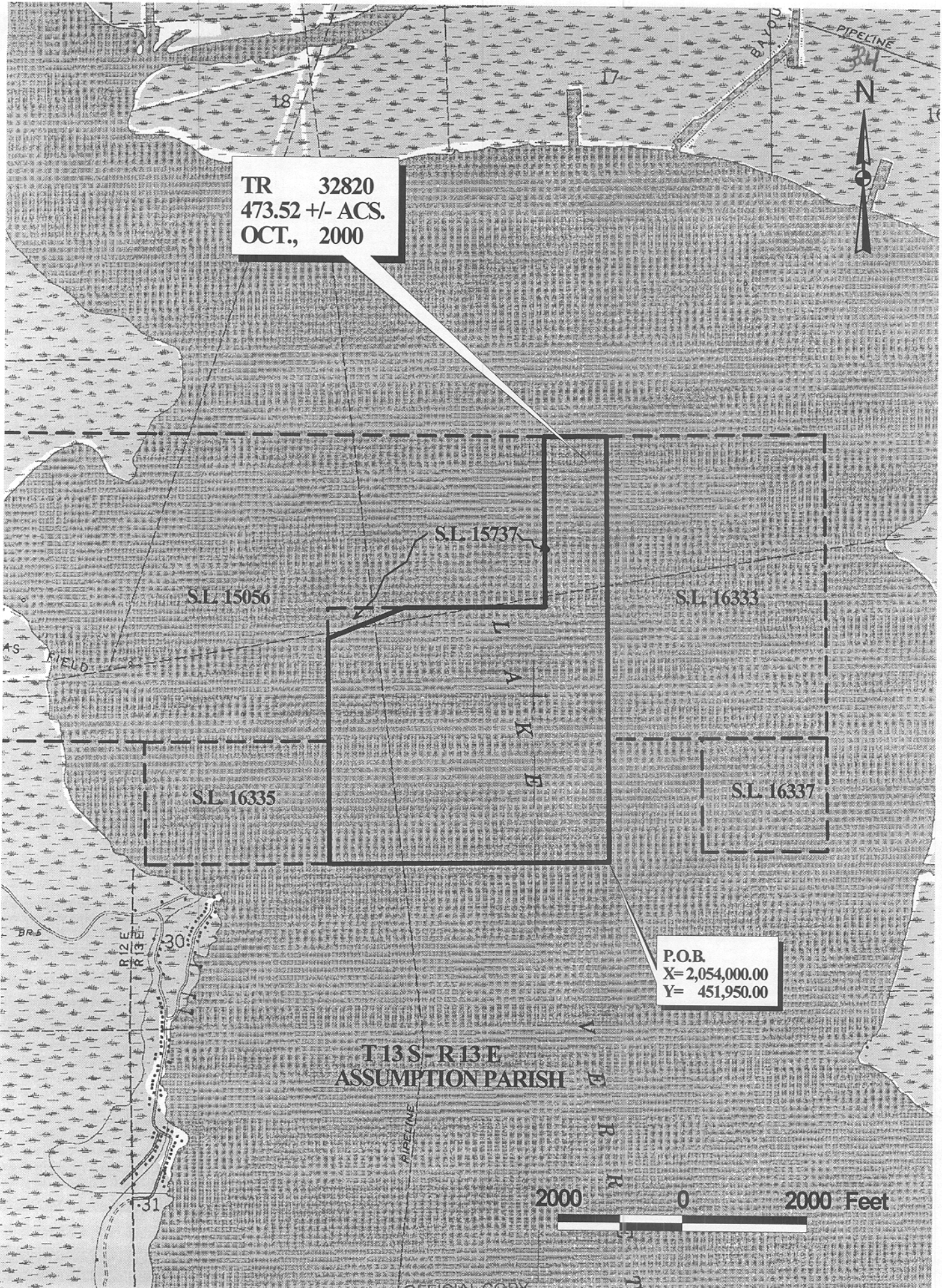
All of the lands now or formerly constituting the beds and bottoms of all water bodies of every nature and description and all islands and other lands formed by accretion or reliction, except tax lands, owned by and not under mineral lease from the State of Louisiana on October 11, 2000, situated in Assumption Parish, Louisiana, within the following described boundaries: Beginning at a point having Coordinates of X = 2,054,000.00 and Y = 451,950.00; thence West 4,500.00 feet to the Southeast corner of State Lease No. 16335 having Coordinates of X = 2,049,500.00 and Y = 451,950.00; thence North 1,950.00 feet on the East boundary of said State Lease No. 16335 to its Northeast corner, also being the Southernmost Southeast corner of State Lease No. 15056 having Coordinates of X = 2,049,500.00 and Y = 453,900.00; thence North 1,619.79 feet on an Eastern boundary of said State Lease No. 15056 to the Southwest corner of the Western portion of State Lease No. 15737, as amended, having Coordinates of X = 2,049,500.00 and Y = 455,519.79; thence North 68 degrees 45 minutes 15 seconds East 1,325.20 feet on the Southerly boundary of said Western portion of said State Lease No. 15737 to its most Easterly corner, also being a point on the boundary of said State Lease No. 15056 having Coordinates of X = 2,050,735.13 and Y = 456,000.00; thence East 2,264.87 feet on a Southern boundary of said State Lease No. 15056 to an interior corner having Coordinates of X = 2,053,000.00 and Y = 456,000.00; thence North 880.57 feet on the East boundary of said State Lease No. 15056 to the most Southerly corner of the Eastern portion of said State Lease No. 15737 having Coordinates of X = 2,053,000.00 and Y = 456,880.57; thence North 68 degrees 45 minutes 15 seconds East 53.64 feet on the boundary of said State Lease No. 15737 to its most Eastern corner having Coordinates of X = 2,053,049.99 and Y = 456,900.01; thence North 39 degrees 48 minutes 20 seconds West 78.10 feet on the boundary of said Eastern portion of said State Lease No. 15737 to its most Northern corner having Coordinates of X = 2,053,000.00 and Y = 456,960.00, being a point on the East boundary of said State Lease No. 15056; thence North 1,740.00 feet on the East boundary of said State Lease No. 15056 to its Northeast corner having Coordinates of X = 2,053,000.00 and Y = 458,700.00; thence East 1,000.00 feet to the Northwest corner of State Lease No. 16333 having Coordinates of X = 2,054,000.00 and Y = 458,700.00; thence South 4,800.00 feet on the West boundary of said State Lease No. 16333 to its Southwest corner having Coordinates of X = 2,054,000.00 and Y = 453,900.00; thence South 1,950.00 feet to the point of beginning, containing approximately 473.52 acres, as shown outlined in red on a plat on file in the Office of Mineral Resources, Department of Natural Resources. All bearings, distances and coordinates are based on Louisiana Coordinate System of 1927 (South Zone).

NOTE: The State of Louisiana does hereby reserve, and this lease shall be subject to, the imprescriptible right of surface use in the nature of a servitude in favor of the Department of Natural Resources, including its Offices and Commissions, for the sole purpose of implementing, constructing, servicing and maintaining approved coastal zone management and/or restoration projects. Utilization of any and all rights derived under this lease by the mineral lessee, its agents, successors or assigns, shall not interfere with nor hinder the reasonable surface use by the Department of Natural Resources, its Offices or Commissions, as hereinabove reserved.

Tract Advertised by the State Mineral Board

Bidder	Cash Payment	Price / Acre	Rental	Oil	Gas	Other

TR 32820  
473.52 +/- ACS.  
OCT., 2000



T 13 S - R 13 E  
ASSUMPTION PARISH

P.O.B.  
X= 2,054,000.00  
Y= 451,950.00

2000 0 2000 Feet

OFFICIAL COPY  
OFFICE OF MINERAL RESOURCES  
DEPT. OF NATURAL RESOURCES  
DO NOT REMOVE