

**TRACT 32816 - St. Mary Parish, Louisiana**

All of the lands now or formerly constituting the beds and bottoms of all water bodies of every nature and description and all islands and other lands formed by accretion or reliction, except tax lands, owned by and not under mineral lease from the State of Louisiana on October 11, 2000, situated in St. Mary Parish, Louisiana, within the following described boundaries: Beginning at the Southwest corner of State Lease No. 14520, also being the Southeast corner of State Lease No. 14519 having Coordinates of X = 1,947,385.00 and Y = 457,600.86; thence East 2,815.00 feet on the South line of said State Lease No. 14520 to the Northwest corner of State Lease No. 14914, as amended, having Coordinates of X = 1,950,200.00 and Y = 457,600.86; thence South 6,100.86 feet on the West line of said State Lease No. 14914 to its Southwest corner, also being the Northwest corner of State Lease No. 14953, as amended, having Coordinates of X = 1,950,200.00 and Y = 451,500.00; thence on the boundary of said State Lease No. 14953 the following courses: South 1,500.00 feet and East 2,400.00 feet to its Southeast corner, also being the Southwest corner of State Lease No. 14954, as amended, having Coordinates of X = 1,952,600.00 and Y = 450,000.00; thence East 3,600.00 feet on the South line of said State Lease No. 14954 to its Southeast corner having Coordinates of X = 1,956,200.00 and Y = 450,000.00; thence South 7,000.00 feet to a point having Coordinates of X = 1,956,200.00 and Y = 443,000.00; thence West 8,815.00 feet to a point having Coordinates of X = 1,947,385.00 and Y = 443,000.00; thence North 14,600.86 feet to the point of beginning, containing approximately 1,160 acres, as shown outlined in red on a plat on file in the Office of Mineral Resources, Department of Natural Resources. All bearings, distances and coordinates are based on Louisiana Coordinate System of 1927 (South Zone).

NOTE: This tract is located within the Attakapas Island Wildlife Management Area. Any operations on said tract shall be coordinated with the Louisiana Department of Wildlife and Fisheries. Special Rules and Regulations have been promulgated by the Louisiana Department of Wildlife and Fisheries for the protection of the game and wildlife for some management areas. Any lease awarded by the Board on said tract shall be subject to any applicable Rules and Regulations of said management area. Copies of these Rules and Regulations may be obtained from the Louisiana Department of Wildlife and Fisheries through the Assistant Secretary, Office of Wildlife, upon request.

Applicant: L.M. Wilson

Bidder	Cash Payment	Price / Acre	Rental	Oil	Gas	Other



P.O.B.  
X=1,947,385.00  
Y= 457,600.86

SL 14520

Drill Hole

SL 14914

Drill Hole

Drill Hole

SL 14953

SL 14954

TR 32816  
1,160 +/- ACS.  
OCT., 2000

Taylor Point

BM 7

LEVEL

CHARENTON

OIL

AND

ST. MARY PARISH



OFFICIAL COPY  
OFFICE OF MINERAL RESOURCES  
DEPT. OF NATURAL RESOURCES  
DO NOT REMOVE

**TRACT 32817 - St. Mary Parish, Louisiana**

All of the lands now or formerly constituting the beds and bottoms of all water bodies of every nature and description and all islands and other lands formed by accretion or reliction, except tax lands, owned by and not under mineral lease from the State of Louisiana on October 11, 2000, situated in St. Mary Parish, Louisiana, within the following described boundaries: Beginning at a point having Coordinates of X = 1,964,200.00 and Y = 451,500.00; thence South 14,000.00 feet to a point having Coordinates of X = 1,964,200.00 and Y = 437,500.00; thence West 8,000.00 feet to a point having Coordinates of X = 1,956,200.00 and Y = 437,500.00; thence North 12,500.00 feet to the Southeast corner of State Lease No. 14954, as amended, having Coordinates of X = 1,956,200.00 and Y = 450,000.00; thence North 1,500.00 feet on the East line of said State Lease No. 14954 to its Northeast corner, also being a point on the South line of State Lease No. 14915 having Coordinates of X = 1,956,200.00 and Y = 451,500.00; thence East 6,874.49 feet on the South line of said State Lease No. 14915 to its Southeast corner having Coordinates of X = 1,963,074.49 and Y = 451,500.00; thence East 1,125.51 feet to the point of beginning, containing approximately 1,791 acres, as shown outlined in red on a plat on file in the Office of Mineral Resources, Department of Natural Resources. All bearings, distances and coordinates are based on Louisiana Coordinate System of 1927 (South Zone).

NOTE: This tract is located within the Attakapas Island Wildlife Management Area. Any operations on said tract shall be coordinated with the Louisiana Department of Wildlife and Fisheries. Special Rules and Regulations have been promulgated by the Louisiana Department of Wildlife and Fisheries for the protection of the game and wildlife for some management areas. Any lease awarded by the Board on said tract shall be subject to any applicable Rules and Regulations of said management area. Copies of these Rules and Regulations may be obtained from the Louisiana Department of Wildlife and Fisheries through the Assistant Secretary, Office of Wildlife, upon request.

Applicant: L.M. Wilson

Bidder	Cash Payment	Price / Acre	Rental	Oil	Gas	Other



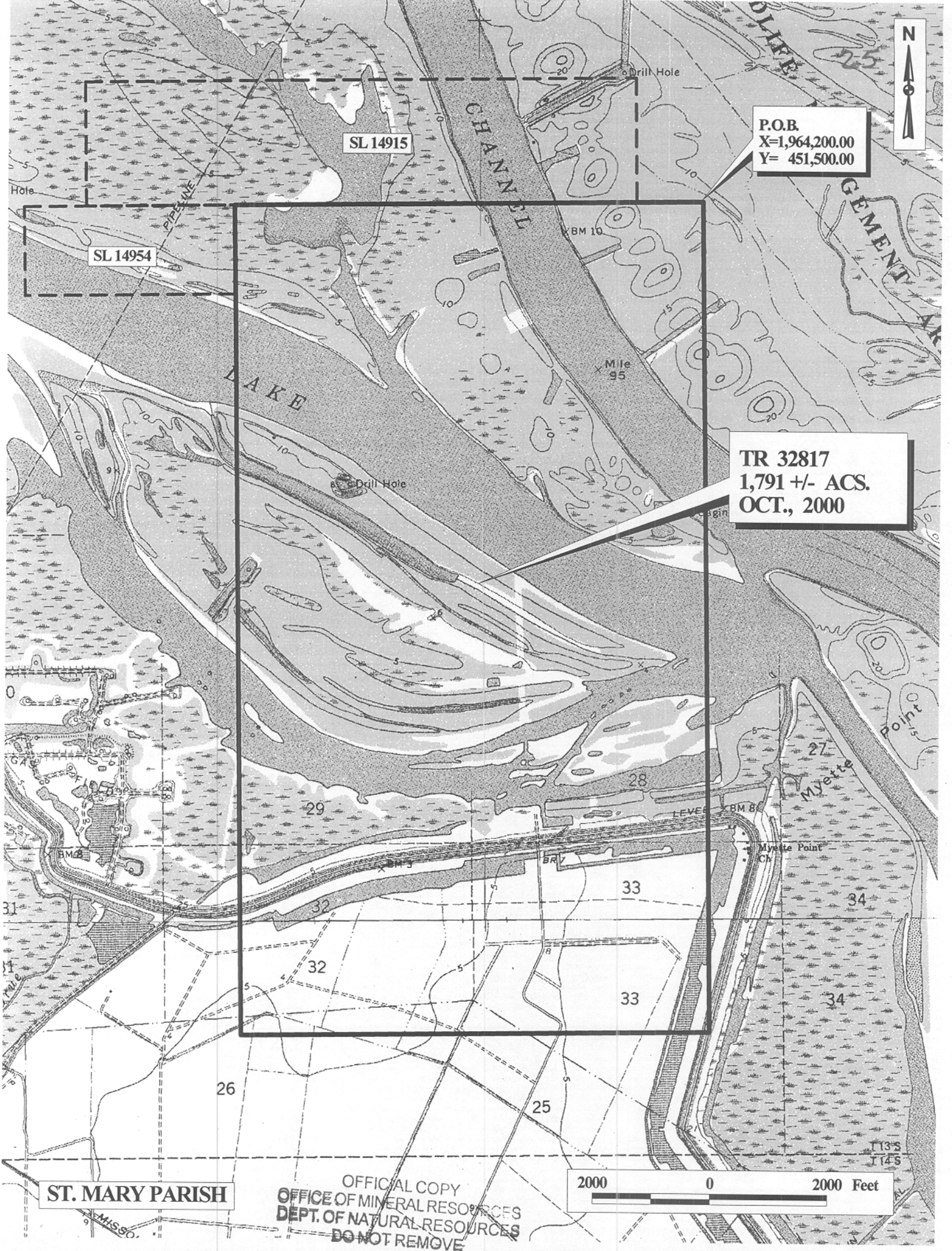


P.O.B.  
X=1,964,200.00  
Y= 451,500.00

TR 32817  
1,791 +/- ACS.  
OCT., 2000

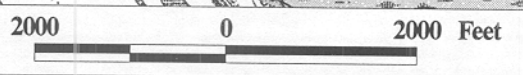
SL 14915

SL 14954



ST. MARY PARISH

OFFICIAL COPY  
OFFICE OF MINERAL RESOURCES  
DEPT. OF NATURAL RESOURCES  
DO NOT REMOVE



**TRACT 32818 - St. Mary Parish, Louisiana**

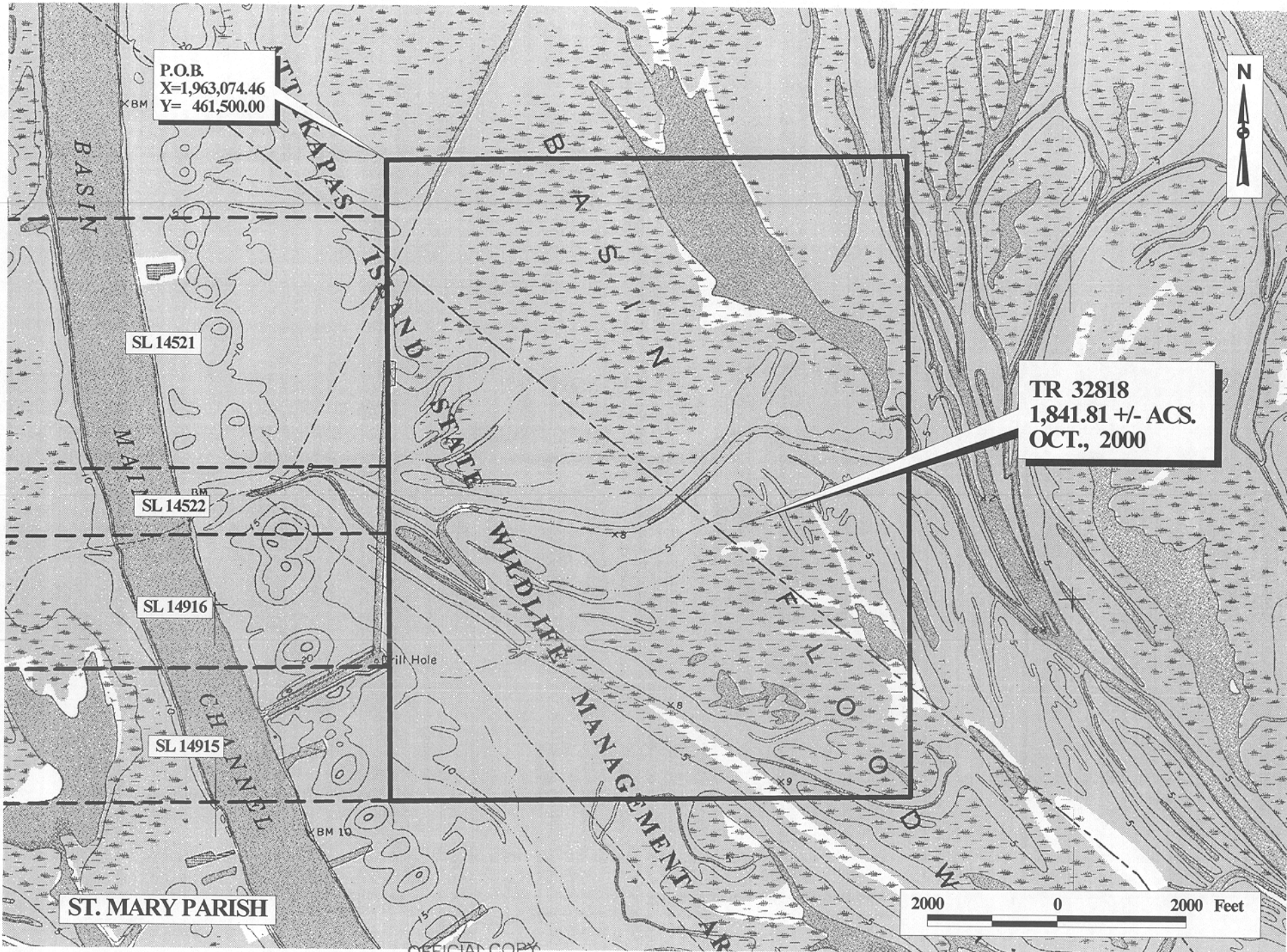
All of the lands now or formerly constituting the beds and bottoms of all water bodies of every nature and description and all islands and other lands formed by accretion or reliction, except tax lands, owned by and not under mineral lease from the State of Louisiana on October 11, 2000, situated in St. Mary Parish, Louisiana, within the following described boundaries: Beginning at a point having Coordinates of X = 1,963,074.46 and Y = 461,500.00; thence East 8,023.16 feet to a point having Coordinates of X = 1,971,097.62 and Y = 461,500.00; thence South 10,000.00 feet to a point having Coordinates of X = 1,971,097.62 and Y = 451,500.00; thence South 89 degrees 59 minutes 46 seconds West 8,023.13 feet to the Southeast corner of State Lease No. 14915 having Coordinates of X = 1,963,074.49 and Y = 451,500.00; thence North 2,084.32 feet on the East line of said State Lease No. 14915 to its Northeast corner, also being the Southeast corner of State Lease No. 16310 having Coordinates of X = 1,963,074.49 and Y = 453,584.32; thence North 15.68 feet on the East line of said State Lease No. 16310 to its Northeast corner, also being the Southeast corner of State Lease No. 14916 having Coordinates of X = 1,963,074.49 and Y = 453,600.00; thence North 2,069.56 feet on the East line of said State Lease No. 14916 to its Northeast corner, also being the Southeast corner of State Lease No. 14522 having Coordinates of X = 1,963,074.49 and Y = 455,669.56; thence North 1,051.43 feet on the East line of said State Lease No. 14522 to its Northeast corner, also being the Southeast corner of State Lease No. 14521 having Coordinates of X = 1,963,074.49 and Y = 456,720.99; thence North 3,900.00 feet on the East line of said State Lease No. 14521 to its Northeast corner having Coordinates of X = 1,963,074.49 and Y = 460,620.99; thence North 00 degrees 00 minutes 07 seconds West 879.01 feet to the point of beginning, containing approximately 1,841.81 acres, as shown outlined in red on a plat on file in the Office of Mineral Resources, Department of Natural Resources. All bearings, distances and coordinates are based on Louisiana Coordinate System of 1927 (South Zone).

NOTE: This tract is located within the Attakapas Island Wildlife Management Area. Any operations on said tract shall be coordinated with the Louisiana Department of Wildlife and Fisheries. Special Rules and Regulations have been promulgated by the Louisiana Department of Wildlife and Fisheries for the protection of the game and wildlife for some management areas. Any lease awarded by the Board on said tract shall be subject to any applicable Rules and Regulations of said management area. Copies of these Rules and Regulations may be obtained from the Louisiana Department of Wildlife and Fisheries through the Assistant Secretary, Office of Wildlife, upon request.

Applicant: L.M. Wilson

Bidder	Cash Payment	Price / Acre	Rental	Oil	Gas	Other





OFFICIAL COPY  
OFFICE OF MINERAL RESOURCES  
DEPT. OF NATURAL RESOURCES  
DO NOT REMOVE