

BAYOU CROOK CH

SLAPCO  
Sierra  
193CD  
14805 ST  
12470 ST

F & A Map Services  
Division of PI

J.L. 45

Humble  
Jean L. 45  
12300

T-I-S R-9-E

T-I-S R-8-E

FAUSSE POINT FIELD

Am. Quaker  
15875

Williams, Inc.

McNamee-Jack  
13138

Despot, J.  
9515

Williams, Inc.

Cobol Corp  
Dow Chem  
12470

TR 32814

P.O.B.  
X=1,916,100.00  
Y= 505,300.00

LAKE FAUSSE POINTE

TEXACO  
ST. 299  
SL293

MAP NOT TO SCALE

IBERIA AND ST. MARTIN PARISHES

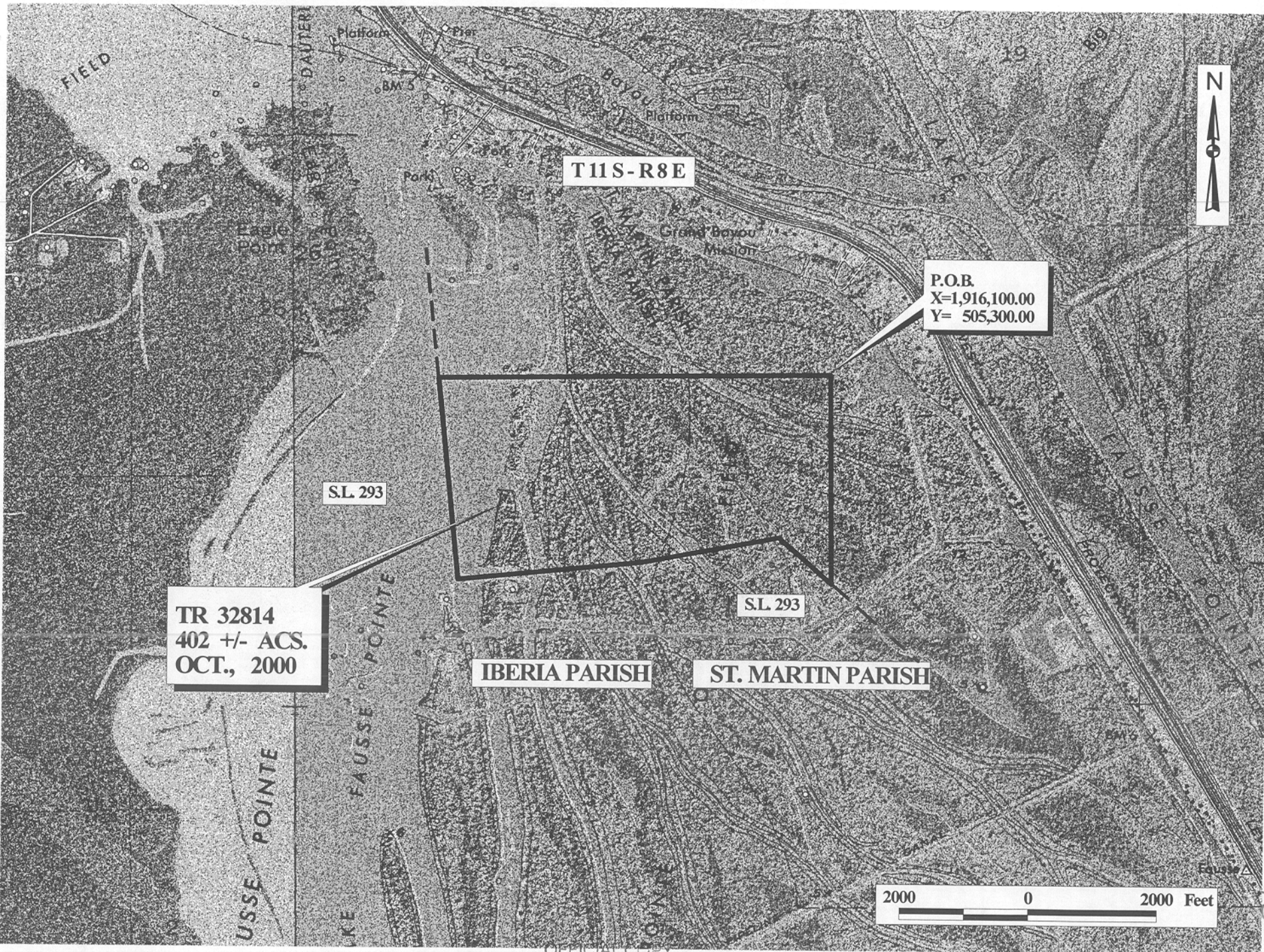
NOT TO BE USED WITH A REVENUE  
FOR INFORMATIONAL PURPOSES

**TRACT 32814 - Iberia and St. Martin Parishes, Louisiana**

All of the lands now or formerly constituting the beds and bottoms of all water bodies of every nature and description and all islands and other lands formed by accretion or reliction, except tax lands, owned by and not under mineral lease from the State of Louisiana on October 11, 2000, situated in Iberia and St. Martin Parishes, Louisiana, within the following described boundaries: Beginning at a point having Coordinates of X = 1,916,100.00 and Y = 505,300.00; thence South approximately 3,301 feet to a point on the boundary of State Lease No. 293, as amended; thence along the boundary of said State Lease No. 293 the following courses: Northwesterly, Southwesterly and Northwesterly to a point of intersection with an East-West line having a Coordinate of Y = 505,300.00; thence East approximately 6,102 feet to the point of beginning, **LESS AND EXCEPT** any portion of State Lease No. 293, as amended, that may lie within the above described tract, containing approximately **402 acres**, as shown outlined in red on a plat on file in the Office of Mineral Resources, Department of Natural Resources. All bearings, distances and coordinates are based on Louisiana Coordinate System of 1927 (South Zone).

Applicant: Gulf Coast Oil Properties, Inc.

Bidder	Cash Payment	Price / Acre	Rental	Oil	Gas	Other



OFFICIAL COPY  
OFFICE OF MINERAL RESOURCES  
DEPT. OF NATURAL RESOURCES  
DO NOT REMOVE

P.O.B.  
X=1,934,815.00  
Y= 457,600.00

SL 14952

SL 14519

SL 14520

P.O.B.  
X=1,947,385.00  
Y= 457,600.86

P.O.B.  
X=1,963,074.46  
Y= 461,500.00

TR 32815

T 13 S - R 9 E

SL 14914 and Royalty  
Any No Corp 16976  
15446

SL 14521

SL 14522

SL 14916

SL 14915

13-S R-10-E

TR 32818

SL 14953

SL 14954

TR 32816

P.O.B.  
X=1,964,200.00  
Y= 451,500.00

TR 32817

NOT TO BE USED WITH A PORTION  
FOR INFORMATIONAL PURPOSES ONLY

ST. MARY PARISH

& A Map Services  
Division of PI

MAP NOT TO SCALE

UN CAL  
ST.5706

**TRACT 32815 - St. Mary Parish, Louisiana**

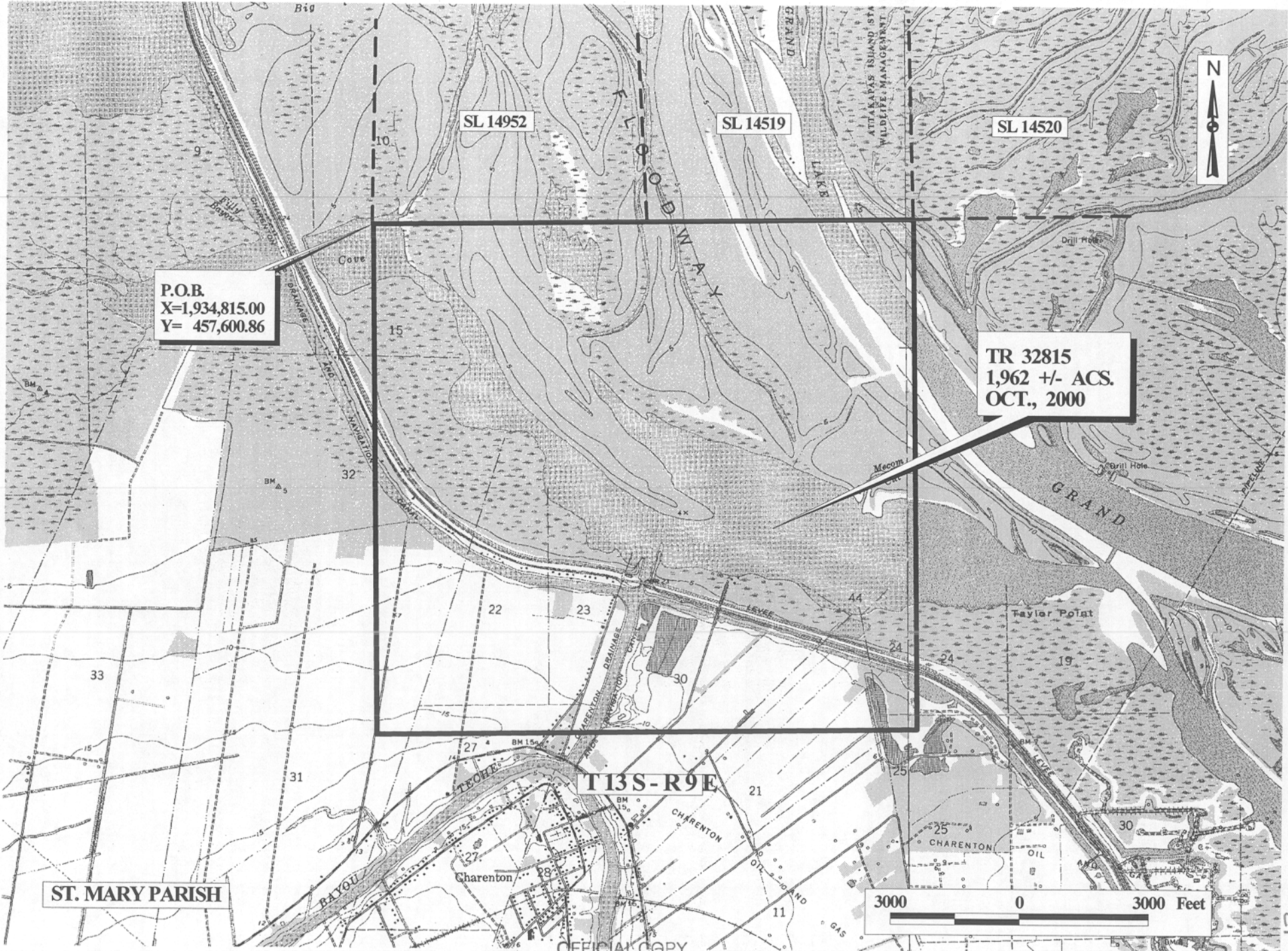
All of the lands now or formerly constituting the beds and bottoms of all water bodies of every nature and description and all islands and other lands formed by accretion or reliction, except tax lands, owned by and not under mineral lease from the State of Louisiana on October 11, 2000, situated in St. Mary Parish, Louisiana, within the following described boundaries: Beginning at the Southwest corner of State Lease No. 14952 having Coordinates of X = 1,934,815.00 and Y = 457,600.86; thence East 6,285.00 feet on the South line of said State Lease No. 14952 to its Southeast corner, also being the Southwest corner of State Lease No. 14519 having Coordinates of X = 1,941,100.00 and Y = 457,600.86; thence East 6,285.00 feet on the South line of said State Lease No. 14519 to its Southeast corner, also being the Southwest corner of State Lease No. 14520 having Coordinates of X = 1,947,385.00 and Y = 457,600.86; thence South 12,000.00 feet to a point having Coordinates of X = 1,947,385.00 and Y = 445,600.00; thence West 12,570.00 feet to a point having Coordinates of X = 1,934,815.00 and Y = 445,600.86; thence North 12,000.00 feet to the point of beginning, containing approximately 1,962 acres, as shown outlined in red on a plat on file in the Office of Mineral Resources, Department of Natural Resources. All bearings, distances and coordinates are based on Louisiana Coordinate System of 1927 (South Zone).

NOTE: This tract is located within the Attakapas Island Wildlife Management Area. Any operations on said tract shall be coordinated with the Louisiana Department of Wildlife and Fisheries. Special Rules and Regulations have been promulgated by the Louisiana Department of Wildlife and Fisheries for the protection of the game and wildlife for some management areas. Any lease awarded by the Board on said tract shall be subject to any applicable Rules and Regulations of said management area. Copies of these Rules and Regulations may be obtained from the Louisiana Department of Wildlife and Fisheries through the Assistant Secretary, Office of Wildlife, upon request.

Applicant: L.M. Wilson

Bidder	Cash Payment	Price / Acre	Rental	Oil	Gas	Other





P.O.B.  
 X=1,934,815.00  
 Y= 457,600.86

SL 14952

SL 14519

SL 14520

TR 32815  
 1,962 +/- ACS.  
 OCT., 2000

T13S-R9E

ST. MARY PARISH

3000 0 3000 Feet

OFFICIAL COPY  
 OFFICE OF MINERAL RESOURCES  
 DEPT. OF NATURAL RESOURCES  
 DO NOT REMOVE