

NOT TO BE USED WITH A PORTIONED
 FOR INFORMATIONAL PURPOSES ONLY

MAP NOT TO SCALE

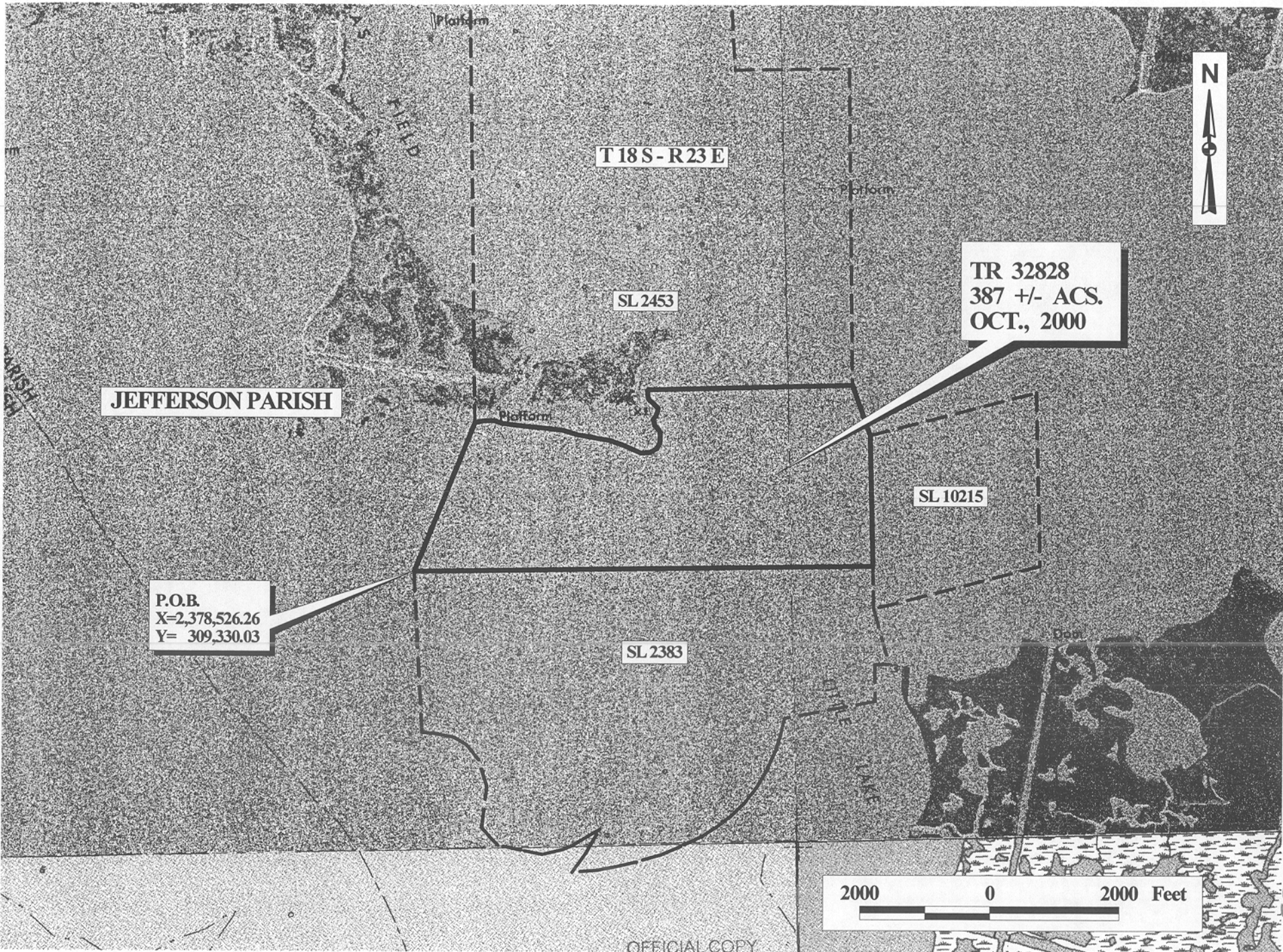
TRACT 32828 - Jefferson Parish, Louisiana

All of the lands now or formerly constituting the beds and bottoms of all water bodies of every nature and description and all islands and other lands formed by accretion or reliction, except tax lands, owned by and not under mineral lease from the State of Louisiana on October 11, 2000, situated in Jefferson Parish, Louisiana, within the following described boundaries: Beginning at the Northwest corner of State Lease No. 2383, as amended, having Coordinates of X = 2,378,526.26 and Y = 309,330.03; thence Northeasterly approximately 2,500 feet to the Southwest corner of State Lease No. 2453, as amended, having a Coordinate of X = 2,379,478.60; thence Easterly, Northerly and Easterly along the Southern boundary of said State Lease No 2453 to its Southeast corner having Coordinates of X = 2,385,310.49 and Y = 312,160.89; thence South 18 degrees 25 minutes 57 seconds East 828.60 feet to the Northwest corner of State Lease No. 10215, as amended, having Coordinates of X = 2,385,572.48 and Y = 311,374.80; thence South 00 degrees 35 minutes 15 seconds East 2,044.88 feet along the West boundary of said State Lease No. 10215 to the Northeast corner of said State Lease No. 2383 having Coordinates of X = 2,385,593.45 and Y = 309,330.03; thence West 7,067.19 feet along the North boundary of said State Lease No. 2383 to the point of beginning, **LESS AND EXCEPT** all that portion of State Lease No. 2453, as amended, that may lie within the above described tract, containing approximately 387 acres, as shown outlined in red on a plat on file in the Office of Mineral Resources, Department of Natural Resources. All bearings, distances and coordinates are based on Louisiana Coordinate System of 1927 (South Zone).

NOTE: The State of Louisiana does hereby reserve, and this lease shall be subject to, the imprescriptible right of surface use in the nature of a servitude in favor of the Department of Natural Resources, including its Offices and Commissions, for the sole purpose of implementing, constructing, servicing and maintaining approved coastal zone management and/or restoration projects. Utilization of any and all rights derived under this lease by the mineral lessee, its agents, successors or assigns, shall not interfere with nor hinder the reasonable surface use by the Department of Natural Resources, its Offices or Commissions, as hereinabove reserved.

Applicant: Toledo Exploration Company

Bidder	Cash Payment	Price / Acre	Rental	Oil	Gas	Other



JEFFERSON PARISH

T 18 S - R 23 E

SL 2453

**TR 32828
387 +/- ACS.
OCT., 2000**

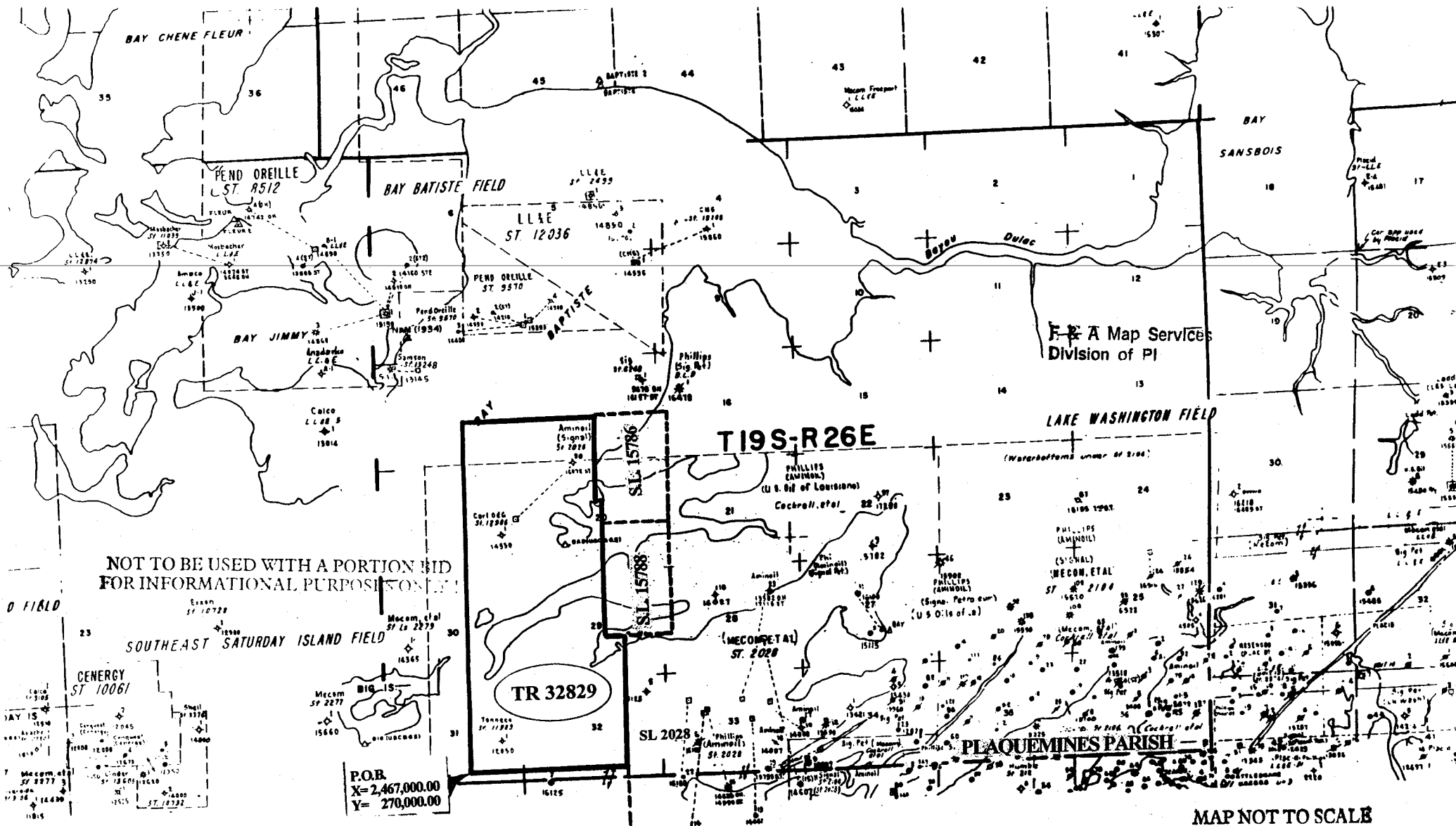
SL 10215

**P.O.B.
X=2,378,526.26
Y= 309,330.03**

SL 2383



OFFICIAL COPY
OFFICE OF MINERAL RESOURCES
DEPT. OF NATURAL RESOURCES
DO NOT REMOVE



F & A Map Services
Division of PI

NOT TO BE USED WITH A PORTION OF
FOR INFORMATIONAL PURPOSES ONLY

TR 32829

P.O.B.
X= 2,467,000.00
Y= 270,000.00

MAP NOT TO SCALE

TRACT 32829 - Plaquemines Parish, Louisiana

All of the lands now or formerly constituting the beds and bottoms of all water bodies of every nature and description and all islands and other lands formed by accretion or reliction, except tax lands, owned by and not under mineral lease from the State of Louisiana on October 11, 2000, situated in Plaquemines Parish, Louisiana, within the following described boundaries: Beginning at a point having Coordinates of X = 2,467,000.00 and Y = 270,000.00; thence North 13,000.00 feet to a point having Coordinates of X = 2,467,000.00 and Y = 283,000.00; thence East 4,935.00 feet to a point on the West boundary of State Lease No. 15786 having Coordinates of X = 2,471,935.00 and Y = 283,000.00; thence along the West boundary of said State Lease No. 15786 the following courses and distances: South 3,200.00 feet, East 195.31 feet and South 788.50 feet to its Southwest corner, also being the Northwest corner of State Lease No. 15788 having Coordinates of X = 2,472,130.31 and Y = 279,011.50; thence South 4,142.11 feet along the West boundary of said State Lease No. 15788 to its Southwest corner having Coordinates of X = 2,472,130.31 and Y = 274,869.39; thence Easterly approximately 686 feet along the South boundary of said State Lease No. 15788 to the most Westerly Northwest corner of State Lease No. 2028, as amended; thence Southerly approximately 4,870 feet along the West boundary of said State Lease No. 2028 to a point having a Coordinate of Y = 270,000.00; thence West approximately 5,885 feet to the point of beginning, containing approximately 1,595 acres, as shown outlined in red on a plat on file in the Office of Mineral Resources, Department of Natural Resources. All bearings, distances and coordinates are based on Louisiana Coordinate System of 1927 (South Zone).

NOTE: The above tract is located in or near an oyster restricted area and all operations in such area must be conducted in strict conformity with the stipulations and/or regulations of the Louisiana Department of Wildlife and Fisheries.

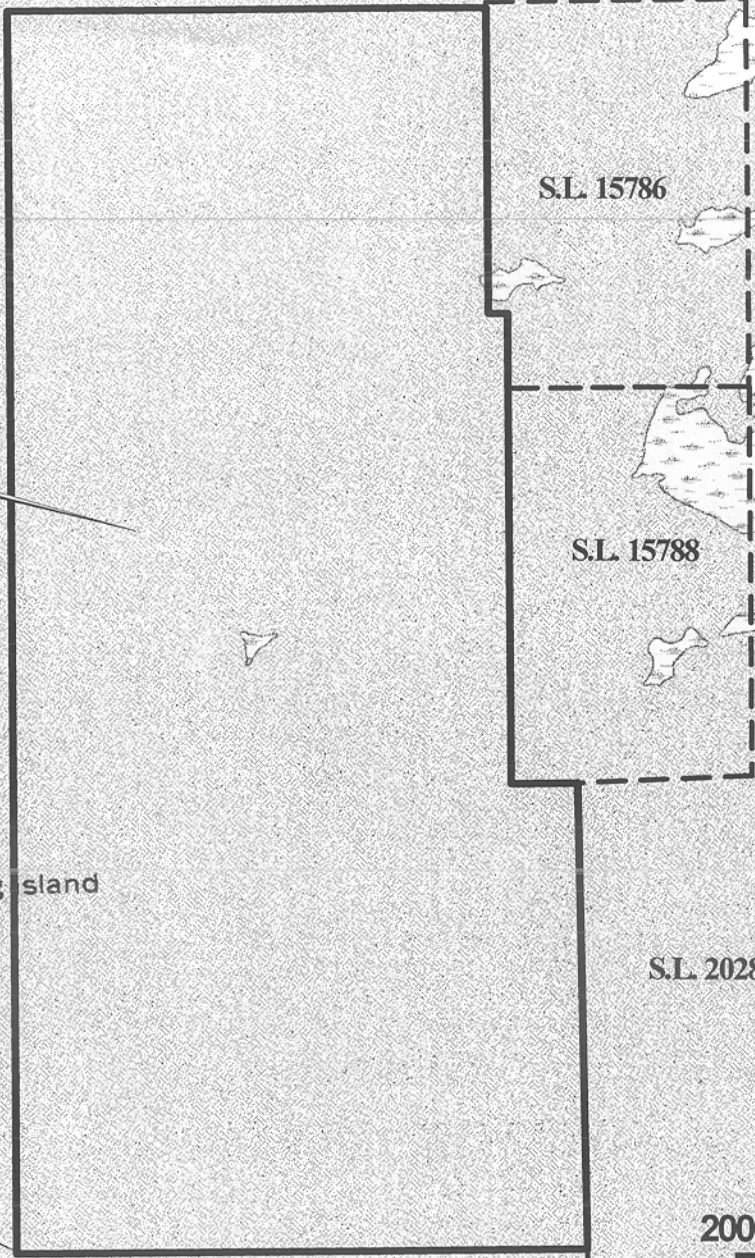
NOTE: The State of Louisiana does hereby reserve, and this lease shall be subject to, the imprescriptible right of surface use in the nature of a servitude in favor of the Department of Natural Resources, including its Offices and Commissions, for the sole purpose of implementing, constructing, servicing and maintaining approved coastal zone management and/or restoration projects. Utilization of any and all rights derived under this lease by the mineral lessee, its agents, successors or assigns, shall not interfere with nor hinder the reasonable surface use by the Department of Natural Resources, its Offices or Commissions, as hereinabove reserved.

Applicant: Southwind Energy, Ltd.

Bidder	Cash Payment	Price / Acre	Rental	Oil	Gas	Other

TR 32829
1,595 +/- ACS.
OCT., 2000

P.O.B.
X= 2,467,000.00
Y= 270,000.00



T 19 S - R 26 E
PLAQUEMINES PARISH

2000 0 2000 Feet

OFFICIAL COPY
OFFICE OF MINERAL RESOURCES
DEPT. OF NATURAL RESOURCES
DO NOT REMOVE

58