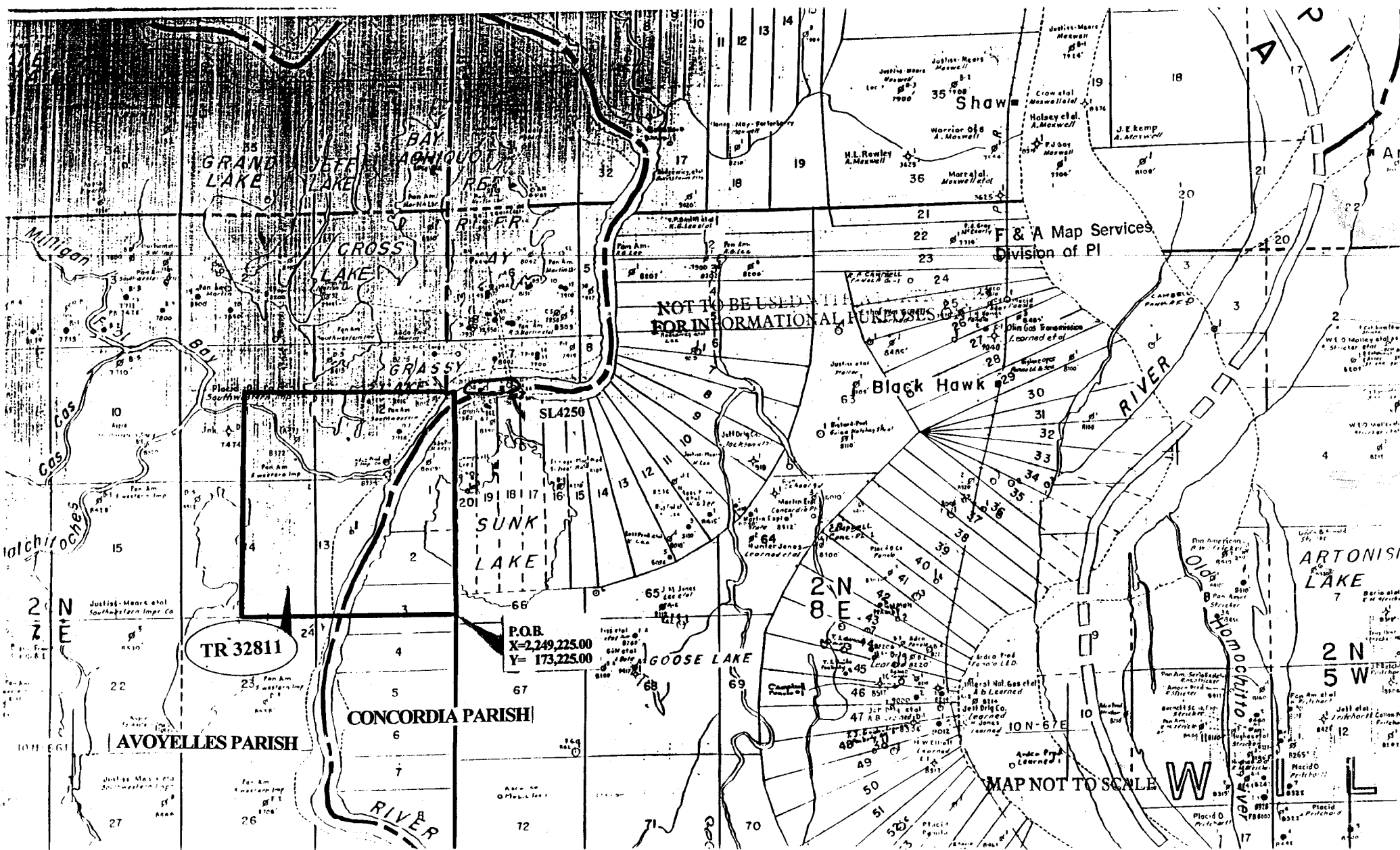


INLAND

TRACTS



NOT TO BE USED FOR INFORMATIONAL PURPOSES

TR 32811

P.O.B.
X=2,249,225.00
Y= 173,225.00

F & A Map Services
Division of PI

MAP NOT TO SCALE

AVOYELLES PARISH

CONCORDIA PARISH

ARTONISI LAKE

2 N
5 W

W

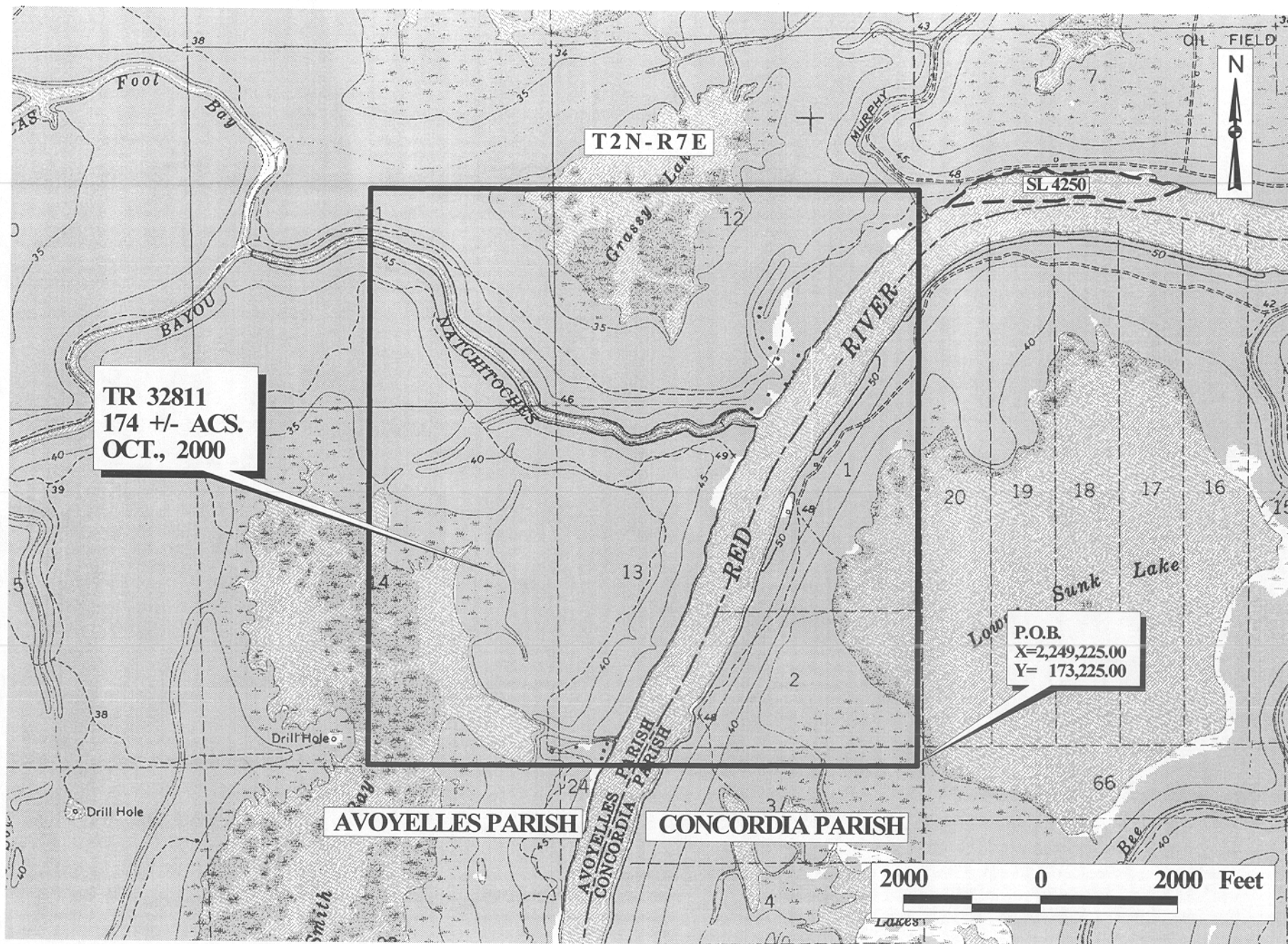
TRACT 32811 - Avoyelles and Concordia Parishes, Louisiana

All of the lands now or formerly constituting the beds and bottoms of all water bodies of every nature and description and all islands and other lands formed by accretion or reliction, except tax lands, owned by and not under mineral lease from the State of Louisiana on October 11, 2000, situated in Avoyelles and Concordia Parishes, Louisiana, within the following described boundaries: Beginning at a point having Coordinates of X = 2,249,225.00 and Y = 173,225.00; thence West 8,000.00 feet to a point having Coordinates of X = 2,241,225.00 and Y = 173,225.00; thence North 8,500.00 feet to a point having Coordinates of X = 2,241,225.00 and Y = 181,725.00; thence East 8,000.00 feet to a point having Coordinates of X = 2,249,225.00 and Y = 181,725.00; thence South 8,500.00 feet to the point of beginning, **LESS AND EXCEPT** any portion of State Lease No. 4250, as amended, that may lie within the above described tract, containing approximately 174 acres, as shown outlined in red on a plat on file in the Office of Mineral Resources, Department of Natural Resources. All bearings, distances and coordinates are based on Louisiana Coordinate System of 1927 (South Zone).

NOTE: This tract is located within the Grassy Lake Wildlife Management Area. Any operations on said tract shall be coordinated with the Louisiana Department of Wildlife and Fisheries. Special Rules and Regulations have been promulgated by the Louisiana Department of Wildlife and Fisheries for the protection of the game and wildlife for some management areas. Any lease awarded by the Board on said tract shall be subject to any applicable Rules and Regulations of said management area. Copies of these Rules and Regulations may be obtained from the Louisiana Department of Wildlife and Fisheries through the Assistant Secretary, Office of Wildlife, upon request.

Applicant: Burt Greene

Bidder	Cash Payment	Price / Acre	Rental	Oil	Gas	Other



OFFICIAL COPY
OFFICE OF MINERAL RESOURCES
DEPT. OF NATURAL RESOURCES
DO NOT REMOVE