

TRACT 45194 - Tensas Parish, Louisiana

A certain Tract of land, excluding the beds and bottoms of all navigable waters, belonging to and not presently under mineral lease from Louisiana Department Of Wildlife And Fisheries on September 11, 2019, being more fully described as follows: Beginning at a point having Coordinates of X = 2,327,737.36 and Y = 502,166.99; thence North 89 degrees 41 minutes 34 seconds East 13,167.10 feet to a point having Coordinates of X = 2,340,904.27 and Y = 502,237.61; thence South 00 degrees 16 minutes 46 seconds East 10,606.45 feet to a point having Coordinates of X = 2,340,956.01 and Y = 491,631.29; thence South 89 degrees 35 minutes 23 seconds West 13,136.46 feet to a point having Coordinates of X = 2,327,819.89 and Y = 491,537.24; thence North 00 degrees 26 minutes 41 seconds West 10,630.07 feet to the point of beginning, more particularly described as follows: That portion of Buckhorn Wildlife Management Area, lying north of Lake Marydale in Sections 10, 11, 12, 14 and 15, Township 12 North, Range 10 East, Tensas Parish, Louisiana, containing approximately **869 acres**, all as more particularly outlined on a plat on file in the Office of Mineral Resources, Department of Natural Resources. The description is based on information provided by the State Agency regarding location and ownership of surface and mineral rights. All bearings, distances and coordinates, if applicable, are based on Louisiana Coordinate System of 1927, (North or South Zone).

NOTE: The above description of the Tract nominated for lease has been provided and corrected, where required, exclusively by the nomination party. Any mineral lease selected from this Tract and awarded by the Louisiana State Mineral and Energy Board shall be without warranty of any kind, either express, implied, or statutory, including, but not limited to, the implied warranties of merchantability and fitness for a particular purpose. Should the mineral lease awarded by the Louisiana State Mineral and Energy Board be subsequently modified, cancelled or abrogated due to the existence of conflicting leases, operating agreements, private claims or other future obligations or conditions which may affect all or any portion of the leased Tract, it shall not relieve the Lessee of the obligation to pay any bonus due thereon to the Louisiana State Mineral and Energy Board, nor shall the Louisiana State Mineral and Energy Board be obligated to refund any consideration paid by the Lessor prior to such modification, cancellation, or abrogation, including, but not limited to, bonuses, rentals and royalties.

NOTE: This tract is located in the Buckhorn Wildlife Management Area under the jurisdiction of the Louisiana Department of Wildlife and Fisheries which has promulgated rules and regulations for the protection of game and wildlife on the aforesaid Tract and, therefore, shall be subject to said rules and regulations, a copy of which may be obtained from the Department of Wildlife and Fisheries. In addition to the specific rules and regulations applicable, the following shall apply regarding operations under this mineral lease:

1. No activities will be allowed without written authorization from the Louisiana Department of Wildlife and Fisheries.

2. Proposed projects will be evaluated on a case by case basis. Modifications to proposed project features, including, but not limited to, access routes, spoil placement, well sites, flowlines and appurtenant structures may be required by the Department of Wildlife and Fisheries.

3. Compensatory mitigation will be required to offset unavoidable wetland impacts.

4. Removal of all structures, facilities and equipment will be required within 120 days of abandonment unless otherwise agreed to in writing by the Department of Wildlife and Fisheries.

5. No activities will be allowed during the hunting season unless approved by the Department.

6. Compliance with the said WMA regulations will be required unless otherwise specified by the Department.

7. Prior to submitting applications for wetland permits to Federal and State permitting agencies the leaseholder shall coordinate project details with the Department of Wildlife and Fisheries. Contact person for the Department will be Kyle Balkum at (225) 765-2819.

8. Additionally, the Department will require a minimum bonus of \$150.00 per acre and a minimum royalty of 25%.

Applicant: SPECTER EXPLORATION, INC. to Agency and by Resolution from the Louisiana Department Of Wildlife And Fisheries authorizing the Mineral Board to act in its behalf

Bidder	Cash Payment	Price/Acre	Rental	Oil	Gas	Other



0 2,000 Feet

P.O.B.

HOPAKA LAKE

SEC 9

SEC 16

TENSAS

T12N - R10E

SEC 2

SEC 3

SEC 22

SEC 23

SEC 12

MARYDALE LAKE

BUCKHORN WMA

SEC 13

Legend



19090008



Wildlife

Office of Mineral Resources, Acres: 869 Tract Number: 45194

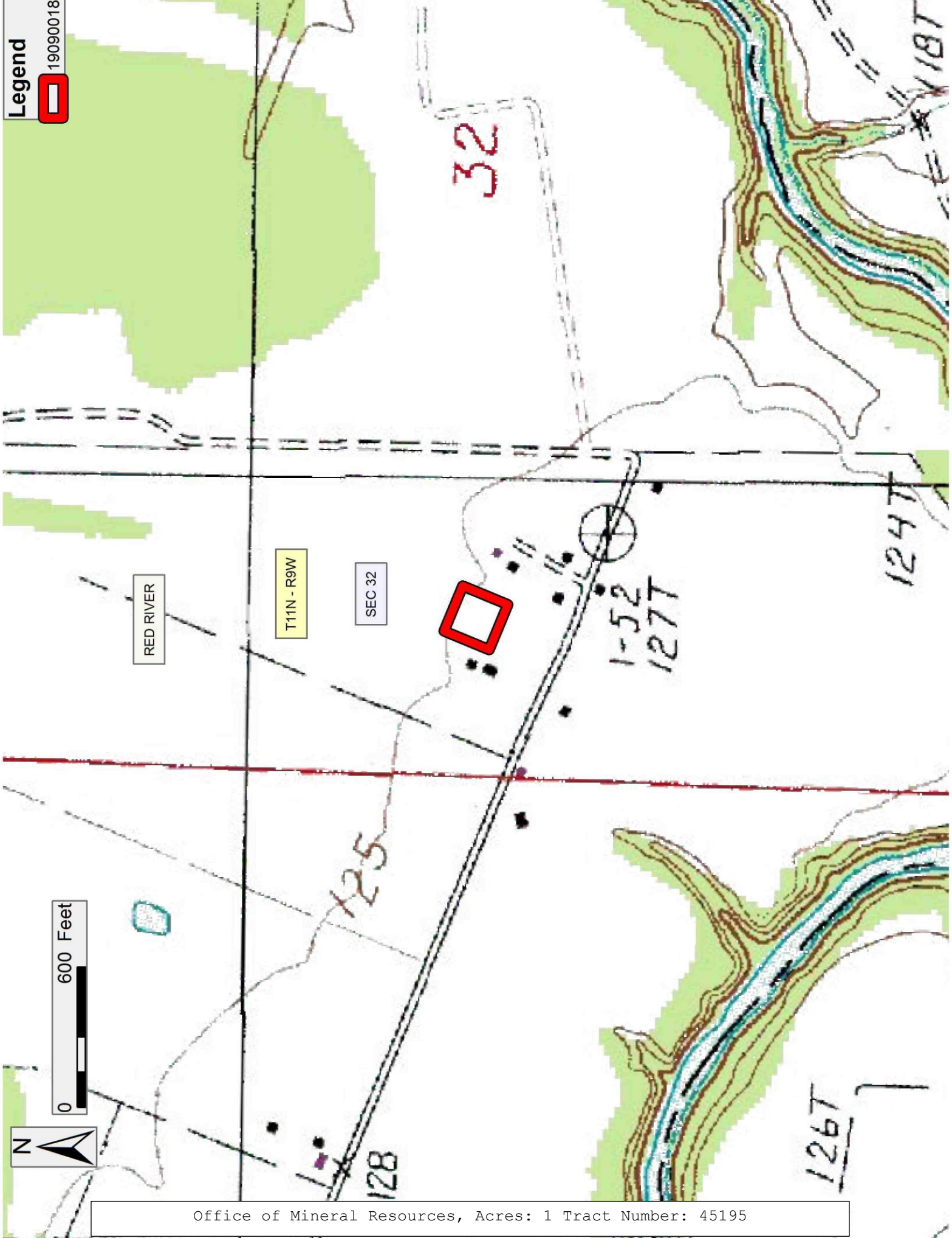
TRACT 45195 - Red River Parish, Louisiana

A certain Tract of land, excluding the beds and bottoms of all navigable waters, belonging to and not presently under mineral lease from Red River Parish on September 11, 2019, being more fully described as follows: A tract of land located in Section 32, Township 11 North, Range 9 West, Red River Parish, Louisiana, being more fully described as follows: Start at the Southwest corner of Lot 14 of Jordon Ferry Plantation as per plat of survey prepared by R.L. Tatum, C.E., duly recorded in Conveyance Book 63, page 126, records of Red River Parish, Louisiana, and from this point run in a Southeasterly direction along the Northeast right of way line of parish road a distance of 420 feet; thence run in a Northeasterly direction perpendicular to said parish road a distance of 210 feet for an actual point of beginning, which actual point of beginning is the Northwest corner of a lot purchased by Sam T. Wilson, et ux, from Jim W. Wilson, et ux, in that certain Cash Sale Deed of record in Conveyance Book 181, page 82, records of Red River Parish, Louisiana; and from said actual point of beginning, run along the Northeast boundary of said Sam T. Wilson lot and parallel to said parish road a distance of 210 feet; thence run in a Northeasterly direction perpendicular to said parish road a distance of 210 feet; thence run in a Northwesterly direction parallel to said parish road a distance of 210 feet; thence run a Southwesterly direction perpendicular to said parish road a distance of 210 feet to the point of beginning, containing approximately **1.00 acre**, all as more particularly outlined on a plat on file in the Office of Mineral Resources, Department of Natural Resources. The description is based on information provided by the State Agency regarding location and ownership of surface and mineral rights. All bearings, distances and coordinates, if applicable, are based on Louisiana Coordinate System of 1927, (North or South Zone).

NOTE: The above description of the Tract nominated for lease has been provided and corrected, where required, exclusively by the nomination party. Any mineral lease selected from this Tract and awarded by the Louisiana State Mineral and Energy Board shall be without warranty of any kind, either express, implied, or statutory, including, but not limited to, the implied warranties of merchantability and fitness for a particular purpose. Should the mineral lease awarded by the Louisiana State Mineral and Energy Board be subsequently modified, cancelled or abrogated due to the existence of conflicting leases, operating agreements, private claims or other future obligations or conditions which may affect all or any portion of the leased Tract, it shall not relieve the Lessee of the obligation to pay any bonus due thereon to the Louisiana State Mineral and Energy Board, nor shall the Louisiana State Mineral and Energy Board be obligated to refund any consideration paid by the Lessor prior to such modification, cancellation, or abrogation, including, but not limited to, bonuses, rentals and royalties.

Applicant: EASTWOOD EXPLORATION to Agency and by Resolution from the Red River Parish Police Jury authorizing the Mineral Board to act in its behalf

Bidder	Cash Payment	Price/Acre	Rental	Oil	Gas	Other



TRACT 45196 - Vermilion Parish, Louisiana

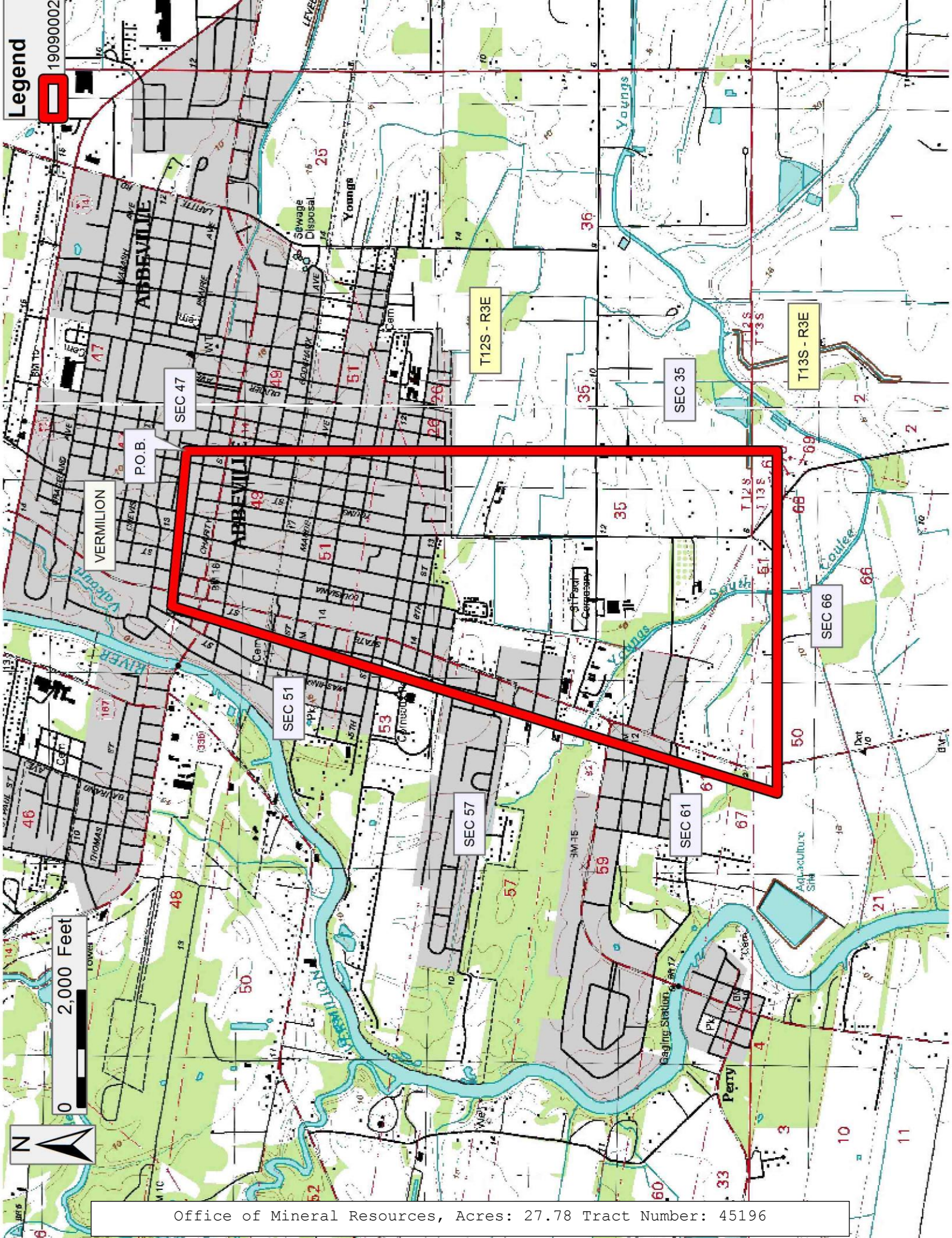
A certain Tract of land, excluding the beds and bottoms of all navigable waters, belonging to and not presently under mineral lease from Louisiana Department Of Transportation And Development on September 11, 2019, being more fully described as follows: Beginning at a point having Coordinates of X = 1,748,605.35 and Y = 476,369.48; thence South 10,127.55 feet to a point having Coordinates of X = 1,748,605.35 and Y = 466,241.93; thence West 5,869.45 feet to a point having Coordinates of X = 1,742,735.90 and Y = 466,241.93; thence North 17 degrees 10 minutes 51 seconds East 10,865.69 feet to a point having Coordinates of X = 1,745,945.49 and Y = 476,622.77; thence South 84 degrees 33 minutes 37 seconds East 2,671.89 feet to the point of beginning, more fully described as follows: Louisiana Highway 330, Louisiana Highway 82, Louisiana Highway 3267, and Louisiana Highway 14, located in Township 12 South, Range 3 East and Township 13 South, Range 3 East, Vermilion Parish, Louisiana, containing approximately **27.78 acres**, all as more particularly outlined on a plat on file in the Office of Mineral Resources, Department of Natural Resources. The description is based on information provided by the State Agency regarding location and ownership of surface and mineral rights. All bearings, distances and coordinates, if applicable, are based on Louisiana Coordinate System of 1927, (North or South Zone).

NOTE: The above description of the Tract nominated for lease has been provided and corrected, where required, exclusively by the nomination party. Any mineral lease selected from this Tract and awarded by the Louisiana State Mineral and Energy Board shall be without warranty of any kind, either express, implied, or statutory, including, but not limited to, the implied warranties of merchantability and fitness for a particular purpose. Should the mineral lease awarded by the Louisiana State Mineral and Energy Board be subsequently modified, cancelled or abrogated due to the existence of conflicting leases, operating agreements, private claims or other future obligations or conditions which may affect all or any portion of the leased Tract, it shall not relieve the Lessee of the obligation to pay any bonus due thereon to the Louisiana State Mineral and Energy Board, nor shall the Louisiana State Mineral and Energy Board be obligated to refund any consideration paid by the Lessor prior to such modification, cancellation, or abrogation, including, but not limited to, bonuses, rentals and royalties.

NOTE: No surface operations will be performed on the property.

Applicant: PATRICK L. DONOHUE PETROLEUM PROPERTIES, INC. to Agency and by Resolution from the Louisiana Department Of Transportation And Development authorizing the Mineral Board to act in its behalf

Bidder	Cash Payment	Price/Acre	Rental	Oil	Gas	Other



Office of Mineral Resources, Acres: 27.78 Tract Number: 45196

TRACT 45197 - Vermilion Parish, Louisiana

A certain Tract of land, excluding the beds and bottoms of all navigable waters, belonging to and not presently under mineral lease from Louisiana Department Of Transportation And Development on September 11, 2019, being more fully described as follows: Beginning at a point having Coordinates of X = 1,755,081.49 and Y = 475,752.78; thence South 00 degrees 11 minutes 10 seconds East 9,510.91 feet to a point having Coordinates of X = 1,755,112.36 and Y = 466,241.93; thence West 6,507.01 feet to a point having Coordinates of X = 1,748,605.35 and Y = 466,241.93; thence North 10,127.55 feet to a point having Coordinates of X = 1,748,605.35 and Y = 476,369.48; thence South 84 degrees 33 minutes 37 seconds East 6,505.43 feet to the point of beginning, more fully described as follows: Louisiana Highway 14 and Louisiana Highway 3267, located in Township 12 South, Range 3 East, Vermilion Parish, Louisiana, containing approximately **22.61 acres**, all as more particularly outlined on a plat on file in the Office of Mineral Resources, Department of Natural Resources. The description is based on information provided by the State Agency regarding location and ownership of surface and mineral rights. All bearings, distances and coordinates, if applicable, are based on Louisiana Coordinate System of 1927, (North or South Zone).

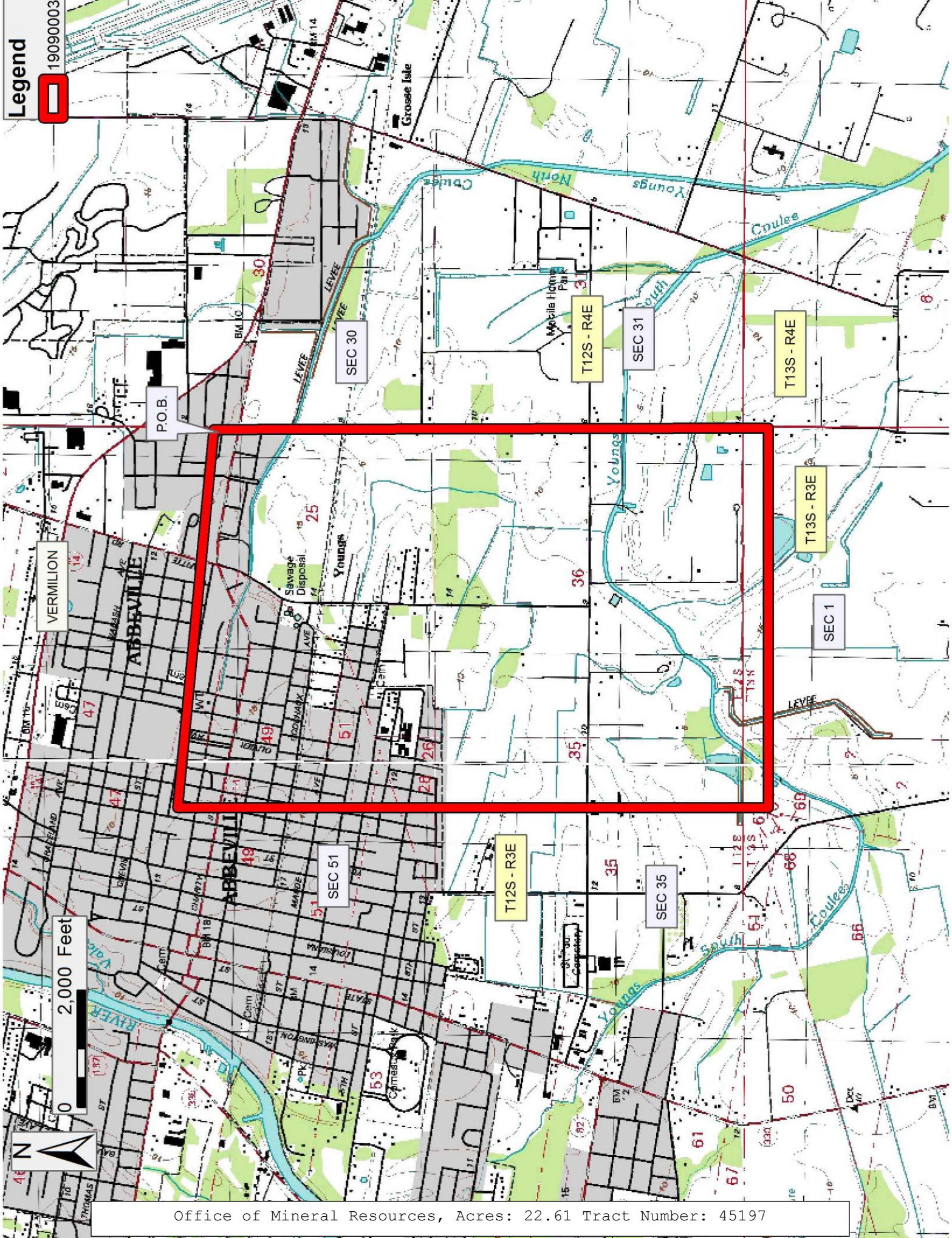
NOTE: The above description of the Tract nominated for lease has been provided and corrected, where required, exclusively by the nomination party. Any mineral lease selected from this Tract and awarded by the Louisiana State Mineral and Energy Board shall be without warranty of any kind, either express, implied, or statutory, including, but not limited to, the implied warranties of merchantability and fitness for a particular purpose. Should the mineral lease awarded by the Louisiana State Mineral and Energy Board be subsequently modified, cancelled or abrogated due to the existence of conflicting leases, operating agreements, private claims or other future obligations or conditions which may affect all or any portion of the leased Tract, it shall not relieve the Lessee of the obligation to pay any bonus due thereon to the Louisiana State Mineral and Energy Board, nor shall the Louisiana State Mineral and Energy Board be obligated to refund any consideration paid by the Lessor prior to such modification, cancellation, or abrogation, including, but not limited to, bonuses, rentals and royalties.

NOTE: No surface operations will be performed on the property.

Applicant: PATRICK L. DONOHUE PETROLEUM PROPERTIES, INC. to Agency and by Resolution from the Louisiana Department Of Transportation And Development authorizing the Mineral Board to act in its behalf

Bidder	Cash Payment	Price/Acre	Rental	Oil	Gas	Other

Legend 190900003



Office of Mineral Resources, Acres: 22.61 Tract Number: 45197

TRACT 45198 - Vermilion Parish, Louisiana

A certain Tract of land, excluding the beds and bottoms of all navigable waters, belonging to and not presently under mineral lease from Louisiana Department Of Transportation And Development on September 11, 2019, being more fully described as follows: Beginning at a point having Coordinates of X = 1,743,890.58 and Y = 469,976.53; thence South 17 degrees 10 minutes 51 seconds West 6,470.40 feet to a point having Coordinates of X = 1,741,979.30 and Y = 463,794.85; thence North 80 degrees 21 minutes 41 seconds West 8,051.44 feet to a point having Coordinates of X = 1,734,041.52 and Y = 465,142.94; thence North 09 degrees 38 minutes 19 seconds East 6,325.88 feet to a point having Coordinates of X = 1,735,100.69 and Y = 471,379.51; thence South 80 degrees 55 minutes 53 seconds East 8,901.16 feet to the point of beginning, more fully described as follows: Louisiana Highway 82 and Louisiana Highway 694, located in Township 12 South, Range 3 East and Township 13 South, Range 3 East, Vermilion Parish, Louisiana, containing approximately **25.44 acres**, all as more particularly outlined on a plat on file in the Office of Mineral Resources, Department of Natural Resources. The description is based on information provided by the State Agency regarding location and ownership of surface and mineral rights. All bearings, distances and coordinates, if applicable, are based on Louisiana Coordinate System of 1927, (North or South Zone).

NOTE: The above description of the Tract nominated for lease has been provided and corrected, where required, exclusively by the nomination party. Any mineral lease selected from this Tract and awarded by the Louisiana State Mineral and Energy Board shall be without warranty of any kind, either express, implied, or statutory, including, but not limited to, the implied warranties of merchantability and fitness for a particular purpose. Should the mineral lease awarded by the Louisiana State Mineral and Energy Board be subsequently modified, cancelled or abrogated due to the existence of conflicting leases, operating agreements, private claims or other future obligations or conditions which may affect all or any portion of the leased Tract, it shall not relieve the Lessee of the obligation to pay any bonus due thereon to the Louisiana State Mineral and Energy Board, nor shall the Louisiana State Mineral and Energy Board be obligated to refund any consideration paid by the Lessor prior to such modification, cancellation, or abrogation, including, but not limited to, bonuses, rentals and royalties.

NOTE: No surface operations will be performed on the property.

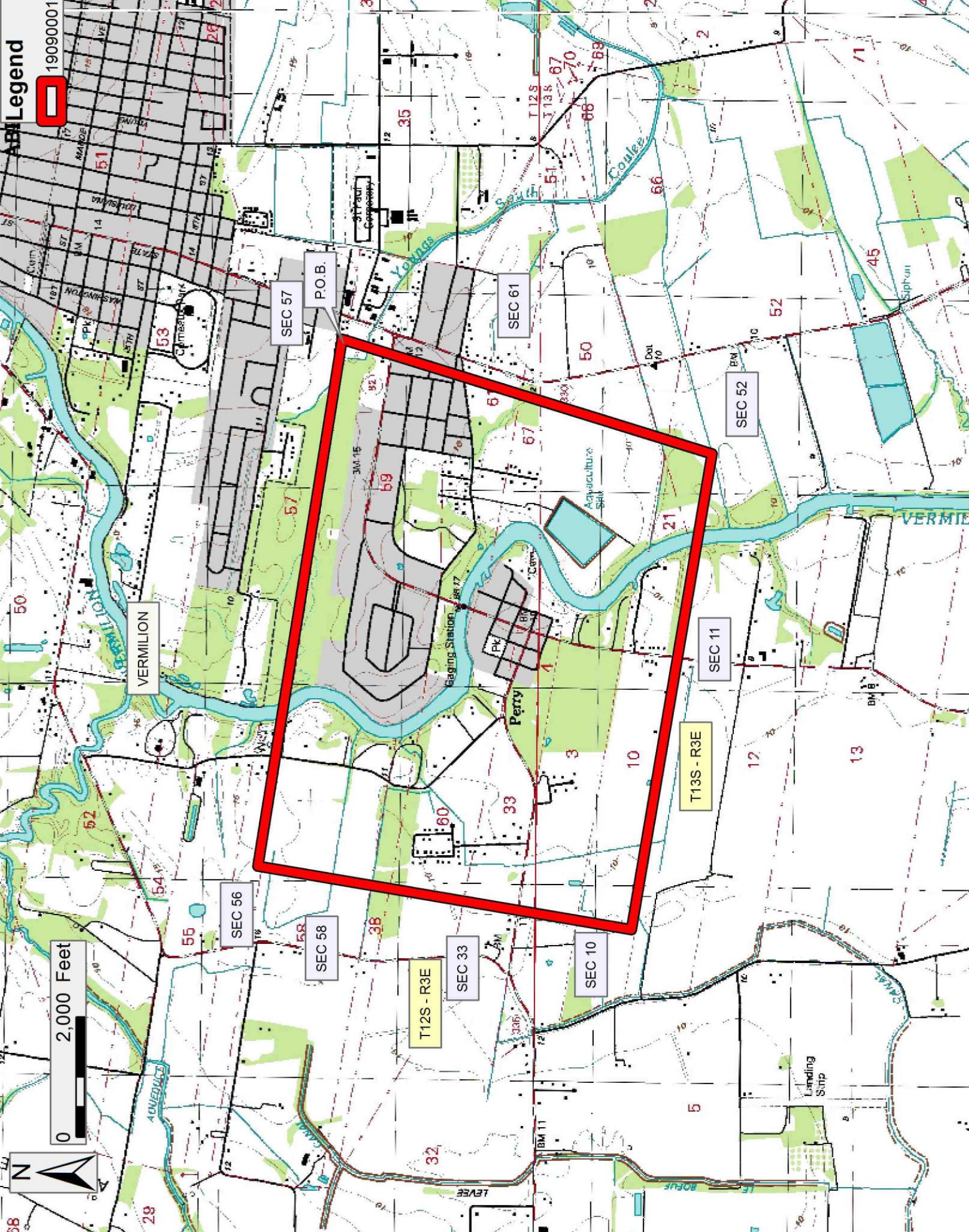
Applicant: PATRICK L. DONOHUE PETROLEUM PROPERTIES, INC. to Agency and by Resolution from the Louisiana Department Of Transportation And Development authorizing the Mineral Board to act in its behalf

Bidder	Cash Payment	Price/Acre	Rental	Oil	Gas	Other

ABM Legend



19090001



Office of Mineral Resources, Acres: 25.44 Tract Number: 45198