

TRACT 45190 - Vermilion Parish, Louisiana

All of the lands now or formerly constituting the beds and bottoms of all water bodies of every nature and description as to which title is vested in the State of Louisiana, together with all islands arising therein and other lands formed by accretion or by reliction, where allowed by law, excepting tax adjudicated lands, and not presently under mineral lease on September 11, 2019, situated in Vermilion Parish, Louisiana, and more particularly described as follows: Beginning at a point having Coordinates of X = 1,744,415.81 and Y = 469,905.12; thence South 08 degrees 54 minutes 47 seconds West 5,424.40 feet to a point having Coordinates of X = 1,743,575.39 and Y = 464,546.21; thence North 80 degrees 27 minutes 42 seconds West 10,388.26 feet to a point having Coordinates of X = 1,733,330.74 and Y = 466,267.62; thence North 08 degrees 54 minutes 53 seconds East 5,365.69 feet to a point having Coordinates of X = 1,734,162.23 and Y = 471,568.49; thence South 80 degrees 47 minutes 08 seconds East 10,387.63 feet to the point of beginning, containing approximately **43 acres**, all as more particularly outlined on a plat on file in the Office of Mineral Resources, Department of Natural Resources. All bearings, distances and coordinates are based on Louisiana Coordinate System of 1927, (North or South Zone), where applicable.

NOTE: The above description of the Tract nominated for lease has been provided and corrected, where required, exclusively by the nomination party. Any mineral lease selected from this Tract and awarded by the Louisiana State Mineral and Energy Board shall be without warranty of any kind, either express, implied, or statutory, including, but not limited to, the implied warranties of merchantability and fitness for a particular purpose. Should the mineral lease awarded by the Louisiana State Mineral and Energy Board be subsequently modified, cancelled or abrogated due to the existence of conflicting leases, operating agreements, private claims or other future obligations or conditions which may affect all or any portion of the leased Tract, it shall not relieve the Lessee of the obligation to pay any bonus due thereon to the Louisiana State Mineral and Energy Board, nor shall the Louisiana State Mineral and Energy Board be obligated to refund any consideration paid by the Lessor prior to such modification, cancellation, or abrogation, including, but not limited to, bonuses, rentals and royalties.

Applicant: PATRICK L. DONOHUE PETROLEUM PROPERTIES, INC.

Bidder	Cash Payment	Price/Acre	Rental	Oil	Gas	Other

Legend

19090004



0 2,000 Feet

VERMILION

VERMILION RIVER

P.O.B.

T12S - R3E

T13S - R3E

Office of Mineral Resources, Acres: 43 Tract Number: 45190

TRACT 45191 - Plaquemines Parish, Louisiana

All of the lands now or formerly constituting the beds and bottoms of all water bodies of every nature and description as to which title is vested in the State of Louisiana, together with all islands arising therein and other lands formed by accretion or by reliction, where allowed by law, excepting tax adjudicated lands, and not presently under mineral lease on September 11, 2019, situated in Plaquemines Parish, Louisiana, and more particularly described as follows: Beginning at a point having Coordinates of X = 2,488,016.84 and Y = 240,834.18; thence North 00 degrees 00 minute 06 seconds West approximately 10,357 feet to a point of intersection with the Southern boundary of that certain Agreement between Cockrell et al and the State of Louisiana, dated May 16, 1938, recorded in Book 88, Page 189, in Plaquemines Parish; thence along the boundary of said Agreement the following: Easterly approximately 10,073 feet and Northerly approximately 1,920 feet to a point of intersection with a line bearing North 89 degrees 59 minutes 33 seconds West and having Coordinates of X = 2,502,213.06 and Y = 253,246.61; thence South 89 degrees 59 minutes 33 seconds East approximately 4,150 feet to a point having Coordinates of X = 2,502,213.06 and Y = 253,246.61; thence South 7,630.80 feet to a point being the Northwest corner of Tract 1 of State Lease No. 1464, as amended, having Coordinates of X = 2,502,213.06 and Y = 245,615.81; thence along the boundary of said Tract 1 of State Lease No. 1464, as amended, the following courses: South 00 degrees 04 minutes 57 seconds East 2,826.66 to a point having Coordinates of X = 2,502,217.13 and Y = 242,789.15, South 87 degrees 56 minutes 35 seconds West 5,401.07 feet to a point having Coordinates of X = 2,496,819.54 and Y = 242,595.29, and South 00 degrees 07 minutes 42 seconds East 1,690.44 feet to its Southwest corner, said corner also being a point on Northern boundary of State Lease No. 1753, as amended, having Coordinates of X = 2,496,823.33 and Y = 240,904.86; thence South 89 degrees 15 minutes 00 seconds West 5,397.33 feet along the Northern boundary of said State Lease No. 1753, as amended, to its Southernmost Northwest corner having Coordinates of X = 2,491,426.46 and Y = 240,834.12; thence North 89 degrees 59 minutes 56 seconds West 3,409.62 feet to the point of beginning, **LESS AND EXCEPT** any right, title, and interest in lands currently covered by the Ernest Cockrell, Jr., et al lease recorded in COB 66, Folio 402, as well as, The Moran Corporation, et al lease recorded in COB 65, Folio 498, under Entry No. 12, Plaquemines Parish, Louisiana, contained within the above described tract. The above described tract contains approximately **1,066 acres**, all as more particularly outlined on a plat on file in the Office of Mineral Resources, Department of Natural Resources. All bearings, distances and coordinates are based on Louisiana Coordinate System of 1927, (North or South Zone), where applicable.

NOTE: The above description of the Tract nominated for lease has been provided and corrected, where required, exclusively by the nomination party. Any mineral lease selected from this Tract and awarded by the Louisiana State Mineral and Energy Board shall be without warranty of any kind, either express, implied, or statutory, including, but not limited to, the implied warranties of merchantability and fitness for a particular purpose. Should the mineral lease awarded by the Louisiana State Mineral and Energy Board be

subsequently modified, cancelled or abrogated due to the existence of conflicting leases, operating agreements, private claims or other future obligations or conditions which may affect all or any portion of the leased Tract, it shall not relieve the Lessee of the obligation to pay any bonus due thereon to the Louisiana State Mineral and Energy Board, nor shall the Louisiana State Mineral and Energy Board be obligated to refund any consideration paid by the Lessor prior to such modification, cancellation, or abrogation, including, but not limited to, bonuses, rentals and royalties.

NOTE: The State of Louisiana does hereby reserve, and this lease shall be subject to, the imprescriptible right of surface use in the nature of a servitude in favor of the Department of Natural Resources, including its Offices and Commissions, for the sole purpose of implementing, constructing, servicing and maintaining approved coastal zone management and/or restoration projects. Utilization of any and all rights derived under this lease by the mineral lessee, its agents, successors or assigns, shall not interfere with nor hinder the reasonable surface use by the Department of Natural Resources, its Offices or Commissions, as herein above reserved.

Applicant: OIL LAND SERVICES, INC.

Bidder	Cash Payment	Price/Acre	Rental	Oil	Gas	Other



0 2,500 Feet

Legend

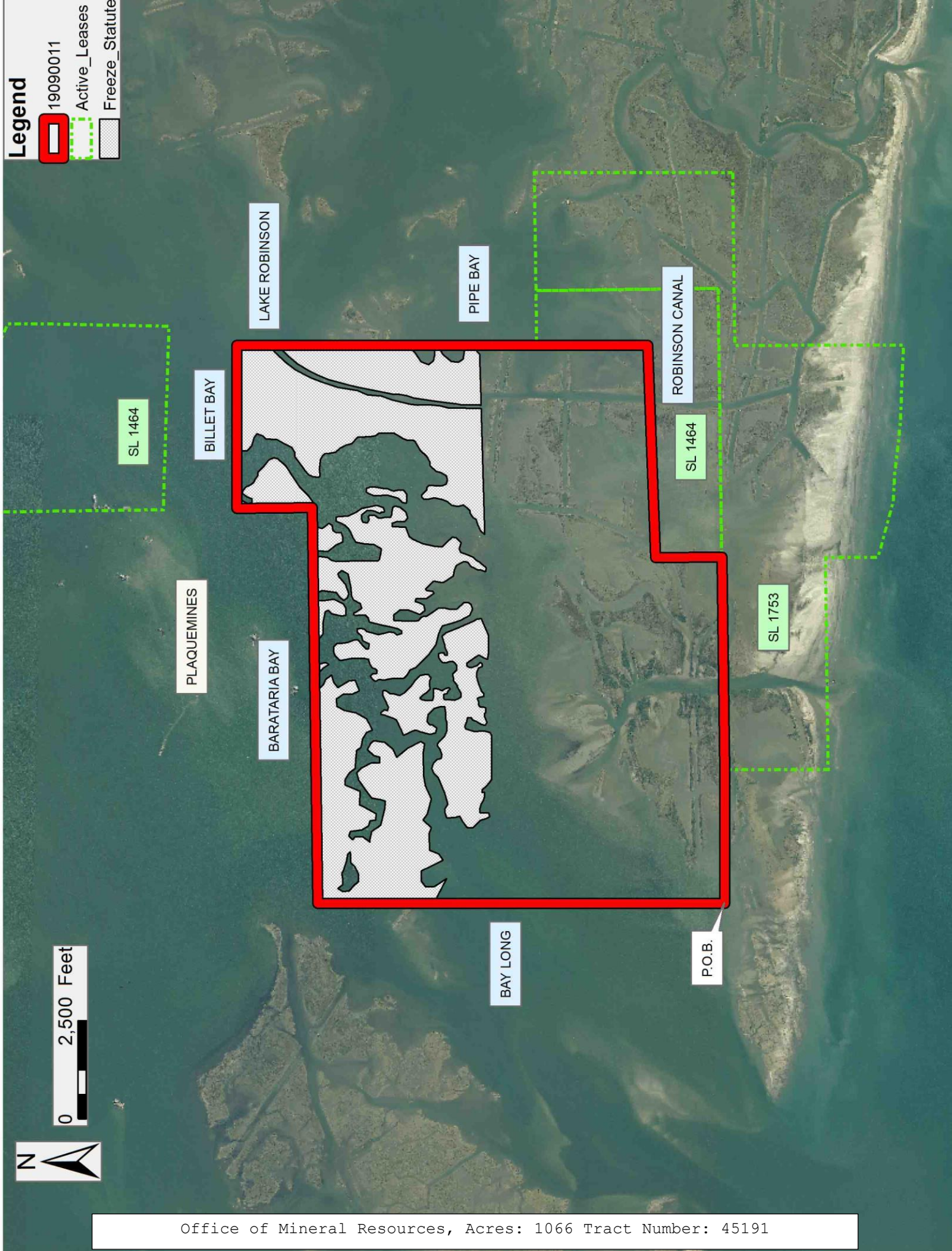


19090011

Active_Leases



Freeze_Statute



TRACT 45192 - Portion of Block 1, West Delta Area, Plaquemines Parish, Louisiana

All of the lands now or formerly constituting the beds and bottoms of all water bodies of every nature and description as to which title is vested in the State of Louisiana, together with all islands arising therein and other lands formed by accretion or by reliction, where allowed by law, excepting tax adjudicated lands, and not presently under mineral lease on September 11, 2019, situated in Plaquemines Parish, Louisiana, and more particularly described as follows: Beginning at a point having Coordinates of X = 2,478,432.49 and Y = 251,194.21; thence Easterly approximately 6,598 feet to a point on the Southern boundary of that certain Agreement between Cockrell et al and the State of Louisiana, dated May 16, 1938, recorded in Book 88, Page 189, in Plaquemines Parish; thence Easterly approximately 2,986 feet along the boundary of said Agreement to a point of intersection with a line bearing North 00 degrees 00 minutes 06 seconds West and having Coordinates of X = 2,488,016.84 and Y = 240,834.18; thence South 00 degrees 00 minutes 06 seconds East approximately 10,357 feet to a point having Coordinates of X = 2,488,016.84 and Y = 240,834.18; thence South 89 degrees 59 minutes 56 seconds East 3,409.62 feet to the Northwest corner of State Lease No. 1753, as amended, having Coordinates of X = 2,491,426.46 and Y = 240,834.12; thence South 00 degrees 10 minutes 22 seconds East 2,640.00 feet along the boundary of said State Lease No. 1753, as amended, to a point being its Southwest corner having Coordinates of X = 2,491,434.44 and Y = 238,194.21; thence West 13,001.95 to a point having Coordinates of X = 2,478,432.49 and Y = 238,194.21; thence North 13,000.00 feet to the point of beginning, **LESS AND EXCEPT** any right, title, and interest in lands currently covered by the Ernest Cockrell, Jr., et al lease recorded in COB 66, Folio 402, as well as, The Moran Corporation, et al lease recorded in COB 65, Folio 498, Plaquemines Parish, Louisiana, contained within the above described tract. The above described tract contains approximately **2,160 acres**, all as more particularly outlined on a plat on file in the Office of Mineral Resources, Department of Natural Resources. All bearings, distances and coordinates are based on Louisiana Coordinate System of 1927, (North or South Zone), where applicable.

NOTE: The above description of the Tract nominated for lease has been provided and corrected, where required, exclusively by the nomination party. Any mineral lease selected from this Tract and awarded by the Louisiana State Mineral and Energy Board shall be without warranty of any kind, either express, implied, or statutory, including, but not limited to, the implied warranties of merchantability and fitness for a particular purpose. Should the mineral lease awarded by the Louisiana State Mineral and Energy Board be subsequently modified, cancelled or abrogated due to the existence of conflicting leases, operating agreements, private claims or other future obligations or conditions which may affect all or any portion of the leased Tract, it shall not relieve the Lessee of the obligation to pay any bonus due thereon to the Louisiana State Mineral and Energy Board, nor shall the Louisiana State Mineral and Energy Board be obligated to refund any consideration paid by the Lessor prior to such modification, cancellation, or abrogation, including, but not limited to, bonuses, rentals and royalties.

NOTE: The State of Louisiana does hereby reserve, and this lease shall be subject to, the imprescriptible right of surface use in the nature of a servitude in favor of the Department of Natural Resources, including its Offices and Commissions, for the sole purpose of implementing, constructing, servicing and maintaining approved coastal zone management and/or restoration projects. Utilization of any and all rights derived under this lease by the mineral lessee, its agents, successors or assigns, shall not interfere with nor hinder the reasonable surface use by the Department of Natural Resources, its Offices or Commissions, as herein above reserved.



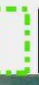

Applicant: OIL LAND SERVICES, INC.

Bidder	Cash Payment	Price/Acre	Rental	Oil	Gas	Other



0 2,500 Feet

Legend

-  19090010
-  Blocks
-  Active_Leases
-  Freeze Statute

PLAQUEMINES

P.O.B.

BARATARIA BAY

BAY LONG

BAY CHENIERE RONQUILLE

SL 1753

GULF OF MEXICO

WD0001

WEST DELTA AREA

TRACT 45193 - Portion of Block 1, West Delta Area, Plaquemines Parish, Louisiana

All of the lands now or formerly constituting the beds and bottoms of all water bodies of every nature and description as to which title is vested in the State of Louisiana, together with all islands arising therein and other lands formed by accretion or by reliction, where allowed by law, excepting tax adjudicated lands, and not presently under mineral lease on September 11, 2019, situated in Plaquemines Parish, Louisiana, and more particularly described as follows: Beginning at a point having Coordinates of X = 2,467,932.49 and Y = 248,694.21; thence East 10,500.00 feet to a point having Coordinates of X = 2,478,432.49 and Y = 248,694.21; thence South 10,500.00 feet to a point having Coordinates of X = 2,478,432.49 and Y = 238,194.21; thence West 10,500.00 feet to a point having Coordinates of X = 2,467,932.49 and Y = 238,194.21; thence North 10,500.00 feet to the point of beginning, containing approximately **2,460 acres**, all as more particularly outlined on a plat on file in the Office of Mineral Resources, Department of Natural Resources. All bearings, distances and coordinates are based on Louisiana Coordinate System of 1927, (North or South Zone), where applicable.

NOTE: The above description of the Tract nominated for lease has been provided and corrected, where required, exclusively by the nomination party. Any mineral lease selected from this Tract and awarded by the Louisiana State Mineral and Energy Board shall be without warranty of any kind, either express, implied, or statutory, including, but not limited to, the implied warranties of merchantability and fitness for a particular purpose. Should the mineral lease awarded by the Louisiana State Mineral and Energy Board be subsequently modified, cancelled or abrogated due to the existence of conflicting leases, operating agreements, private claims or other future obligations or conditions which may affect all or any portion of the leased Tract, it shall not relieve the Lessee of the obligation to pay any bonus due thereon to the Louisiana State Mineral and Energy Board, nor shall the Louisiana State Mineral and Energy Board be obligated to refund any consideration paid by the Lessor prior to such modification, cancellation, or abrogation, including, but not limited to, bonuses, rentals and royalties.

NOTE: The State of Louisiana does hereby reserve, and this lease shall be subject to, the imprescriptible right of surface use in the nature of a servitude in favor of the Department of Natural Resources, including its Offices and Commissions, for the sole purpose of implementing, constructing, servicing and maintaining approved coastal zone management and/or restoration projects. Utilization of any and all rights derived under this lease by the mineral lessee, its agents, successors or assigns, shall not interfere with nor hinder the reasonable surface use by the Department of Natural Resources, its Offices or Commissions, as herein above reserved.

Applicant: OIL LAND SERVICES, INC.

Bidder	Cash Payment	Price/Acre	Rental	Oil	Gas	Other



0 2,000 Feet

P.O.B.

BAY RONQUILLE

BARATARIA BAY

PLAQUEMINES

BAY CHENIERE RONQUILLE

WD0001

GULF OF MEXICO

WEST DELTA AREA

Legend

-  19090009
-  Blocks
-  Counties

Office of Mineral Resources, Acres: 2460 Tract Number: 45193