

TRACT 44977 - Rapides Parish, Louisiana

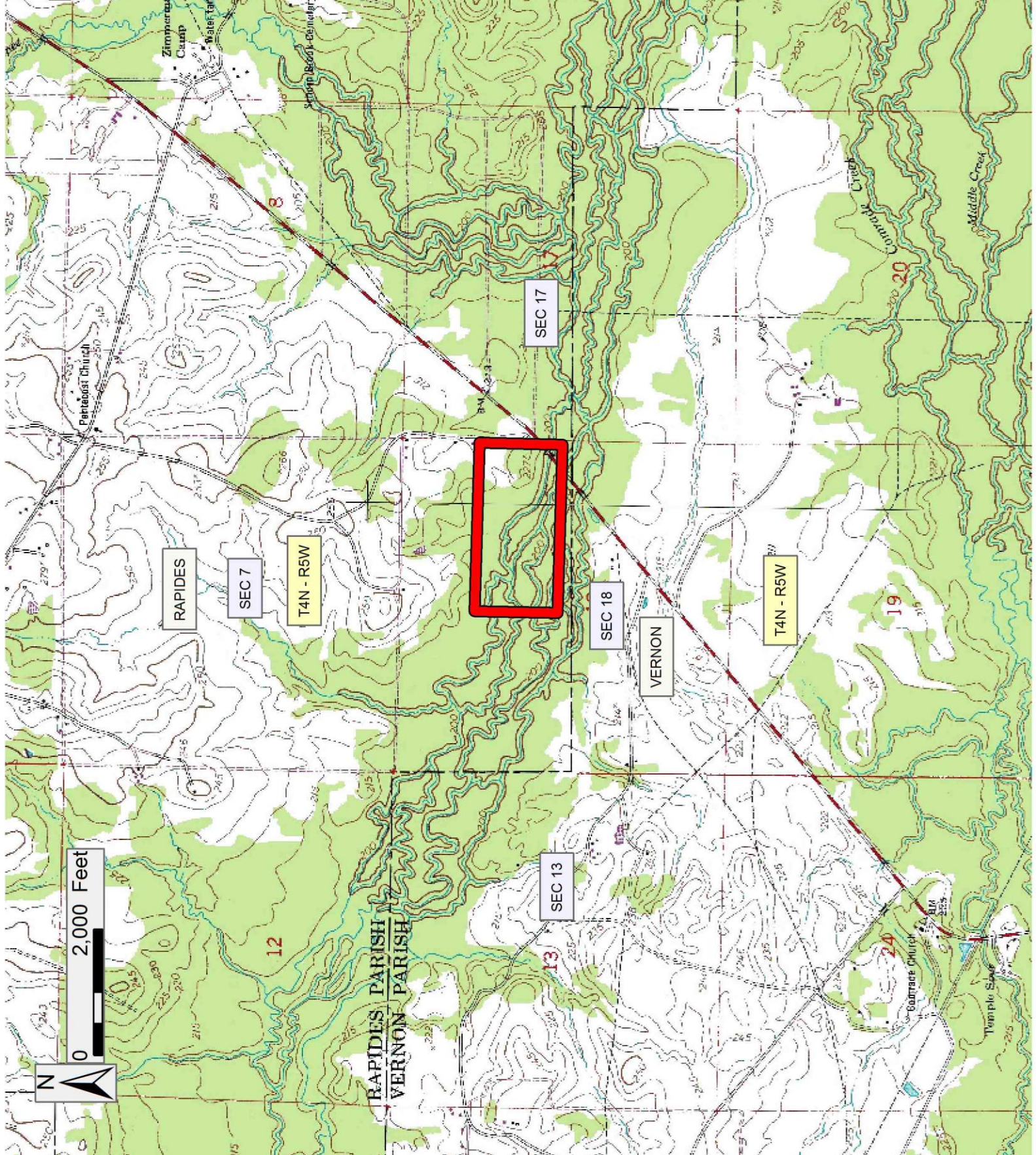
A certain Tract of land, excluding the beds and bottoms of all navigable waters, belonging to and not presently under mineral lease from Red River, Atchafalaya & Bayou Boeuf Levee District on September 12, 2018, being more fully described as follows: A certain tract of land, excluding the beds and bottoms of all navigable waters, belonging to the Red River, Atchafalaya AND Bayou Boeuf Levee District and not presently under mineral lease as of September 12, 2018, being described as the South Half of the Northeast Quarter (South 1/2 of NE 1/4) of Section 18, Township 4 North, Range 5 West, Rapides Parish, Louisiana and containing **80.00 acres**, all as more particularly outlined on a plat on file in the Office of Mineral Resources, Department of Natural Resources. The description is based on information provided by the State Agency regarding location and ownership of surface and mineral rights. All bearings, distances and coordinates, if applicable, are based on Louisiana Coordinate System of 1927, (North or South Zone).

NOTE: The above description of the Tract nominated for lease has been provided and corrected, where required, exclusively by the nomination party. Any mineral lease selected from this Tract and awarded by the Louisiana State Mineral and Energy Board shall be without warranty of any kind, either express, implied, or statutory, including, but not limited to, the implied warranties of merchantability and fitness for a particular purpose. Should the mineral lease awarded by the Louisiana State Mineral and Energy Board be subsequently modified, cancelled or abrogated due to the existence of conflicting leases, operating agreements, private claims or other future obligations or conditions which may affect all or any portion of the leased Tract, it shall not relieve the Lessee of the obligation to pay any bonus due thereon to the Louisiana State Mineral and Energy Board, nor shall the Louisiana State Mineral and Energy Board be obligated to refund any consideration paid by the Lessor prior to such modification, cancellation, or abrogation, including, but not limited to, bonuses, rentals and royalties.

Applicant: GREAT SOUTHERN EXPLORATION L.C. to Agency and by Resolution from the Red River, Atchafalaya & Bayou Boeuf Levee District authorizing the Mineral Board to act in its behalf

Bidder	Cash Payment	Price/Acre	Rental	Oil	Gas	Other

Legend
18090010



Office of Mineral Resources, Acres: 80 Tract Number: 44977

TRACT 44978 - Rapides Parish, Louisiana

A certain Tract of land, excluding the beds and bottoms of all navigable waters, belonging to and not presently under mineral lease from Red River, Atchafalaya & Bayou Boeuf Levee District on September 12, 2018, being more fully described as follows: A certain tract of land, excluding the beds and bottoms of all navigable waters, belonging to the Red River, Atchafalaya AND Bayou Boeuf Levee District and not presently under mineral lease as of September 12, 2018, being described as the Southeast Quarter of the Southeast Quarter (SE/4 of SE/4) of Section 26, Township 4 North, Range 5 West, Rapides Parish, Louisiana and containing **39.86 acres**, all as more particularly outlined on a plat on file in the Office of Mineral Resources, Department of Natural Resources. The description is based on information provided by the State Agency regarding location and ownership of surface and mineral rights. All bearings, distances and coordinates, if applicable, are based on Louisiana Coordinate System of 1927, (North or South Zone).

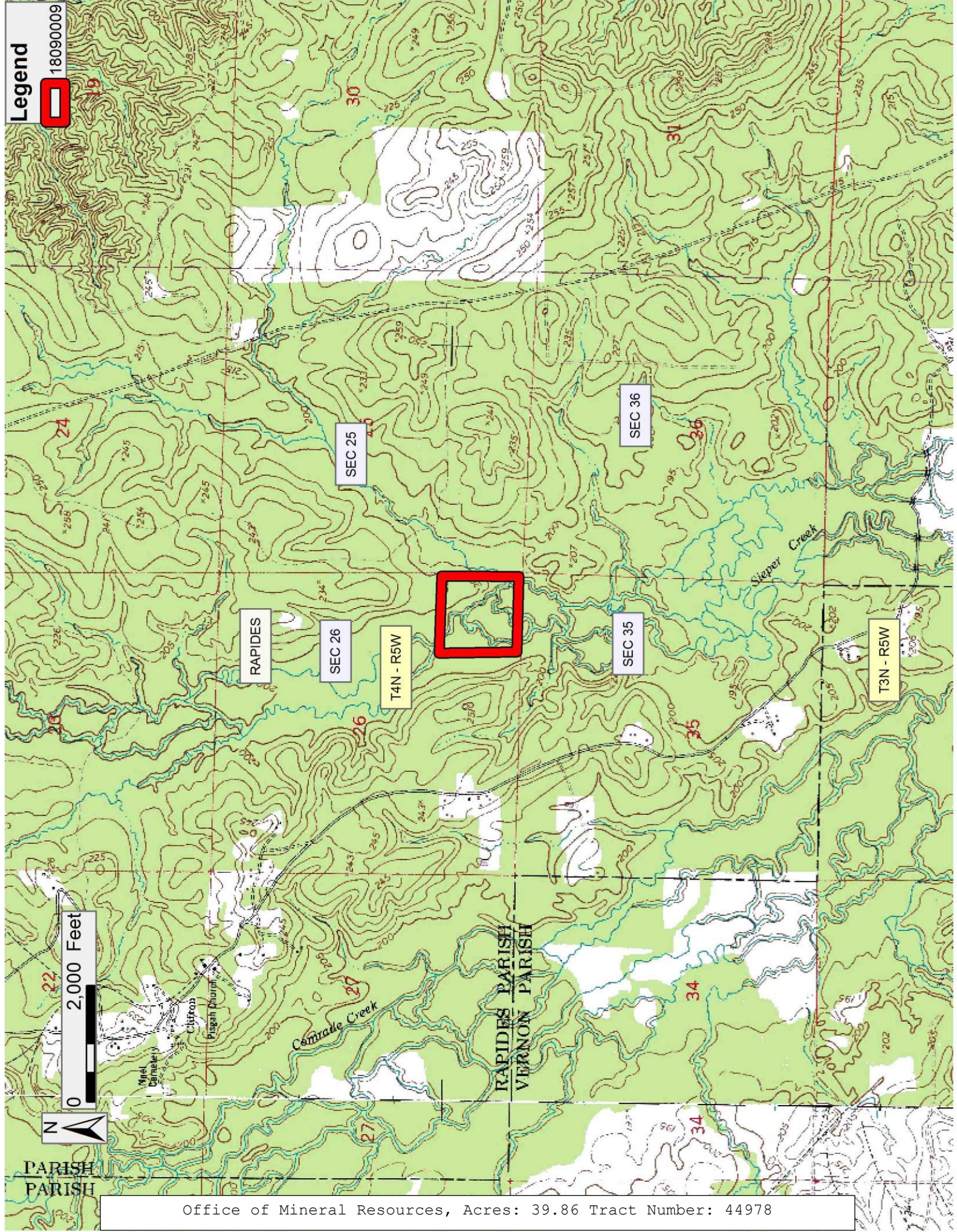
NOTE: The above description of the Tract nominated for lease has been provided and corrected, where required, exclusively by the nomination party. Any mineral lease selected from this Tract and awarded by the Louisiana State Mineral and Energy Board shall be without warranty of any kind, either express, implied, or statutory, including, but not limited to, the implied warranties of merchantability and fitness for a particular purpose. Should the mineral lease awarded by the Louisiana State Mineral and Energy Board be subsequently modified, cancelled or abrogated due to the existence of conflicting leases, operating agreements, private claims or other future obligations or conditions which may affect all or any portion of the leased Tract, it shall not relieve the Lessee of the obligation to pay any bonus due thereon to the Louisiana State Mineral and Energy Board, nor shall the Louisiana State Mineral and Energy Board be obligated to refund any consideration paid by the Lessor prior to such modification, cancellation, or abrogation, including, but not limited to, bonuses, rentals and royalties.

Applicant: GREAT SOUTHERN EXPLORATION L.C. to Agency and by Resolution from the Red River, Atchafalaya & Bayou Boeuf Levee District authorizing the Mineral Board to act in its behalf

Bidder	Cash Payment	Price/Acre	Rental	Oil	Gas	Other

Legend

18090009



2,000 Feet



PARISH
PARISH

Office of Mineral Resources, Acres: 39.86 Tract Number: 44978

TRACT 44979 - Iberia Parish School Board - Iberia Parish, Louisiana

The State Mineral and Energy Board acting on behalf of the Iberia Parish School Board, pursuant to Resolution(s) adopted by that (those) body(ies) and in accordance with Louisiana Revised Statutes 30:121-136 and 151-156, as amended, and Article XIV, Section 16(A)(9) and (B) of the Louisiana Constitution of 1974, as same may be continued and promulgated in proper statutory form and, further, amended from time to time, advertises the lands not under mineral lease on September 12, 2018, excluding the beds and bottoms of all navigable water bodies located within the following: All or a portion of Section 16 and 21 and 17, Township 12 South, Range 10 East in Iberia Parish, Louisiana, All of Fractional Section 16, Township 12 South, Range 10 East in Iberia Parish, Louisiana, containing approximately **298.12 acres**, all as more particularly outlined on a plat on file in the Office of Mineral Resources, Department of Natural Resources. All bearings, distances and coordinates are based on Louisiana Coordinate System of 1927, (North or South Zone).

NOTE: The above description of the Tract nominated for lease has been provided and corrected, where required, exclusively by the nomination party. Any mineral lease selected from this Tract and awarded by the Louisiana State Mineral and Energy Board shall be without warranty of any kind, either express, implied, or statutory, including, but not limited to, the implied warranties of merchantability and fitness for a particular purpose. Should the mineral lease awarded by the Louisiana State Mineral and Energy Board be subsequently modified, cancelled or abrogated due to the existence of conflicting leases, operating agreements, private claims or other future obligations or conditions which may affect all or any portion of the leased Tract, it shall not relieve the Lessee of the obligation to pay any bonus due thereon to the Louisiana State Mineral and Energy Board, nor shall the Louisiana State Mineral and Energy Board be obligated to refund any consideration paid by the Lessor prior to such modification, cancellation, or abrogation, including, but not limited to, bonuses, rentals and royalties.

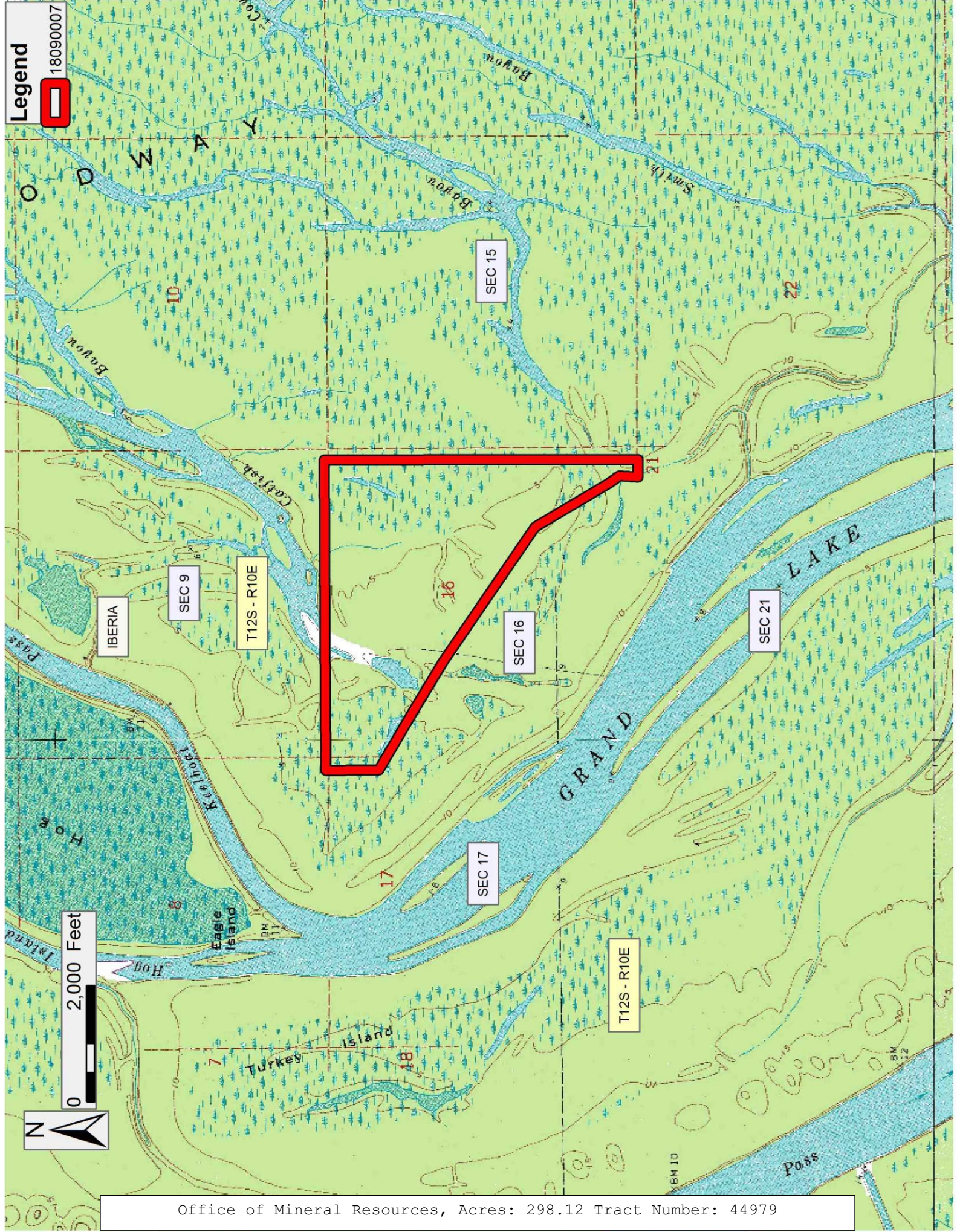
NOTE: This acreage is entirely within the boundary of the Atchafalaya Basin Legal Area.

Applicant: MIIA EXPLORATION to Agency and by Resolution from the Iberia Parish School Board authorizing the Mineral Board to act in its behalf

Bidder	Cash Payment	Price/Acre	Rental	Oil	Gas	Other

Legend

18090007



Office of Mineral Resources, Acres: 298.12 Tract Number: 44979

TRACT 44980 - Iberia Parish School Board - Iberia Parish, Louisiana

The State Mineral and Energy Board acting on behalf of the Iberia Parish School Board, pursuant to Resolution(s) adopted by that (those) body(ies) and in accordance with Louisiana Revised Statutes 30:121-136 and 151-156, as amended, and Article XIV, Section 16(A)(9) and (B) of the Louisiana Constitution of 1974, as same may be continued and promulgated in proper statutory form and, further, amended from time to time, advertises the lands not under mineral lease on September 12, 2018, excluding the beds and bottoms of all navigable water bodies located within the following: All or a portion of Section 9 and 16, Township 12 South, Range 08 East in Iberia Parish, Louisiana, All of Fractional Section 16, Township 12 South, Range 8 East in Iberia Parish, Louisiana, containing approximately **426.42 acres**, all as more particularly outlined on a plat on file in the Office of Mineral Resources, Department of Natural Resources. All bearings, distances and coordinates are based on Louisiana Coordinate System of 1927, (North or South Zone).

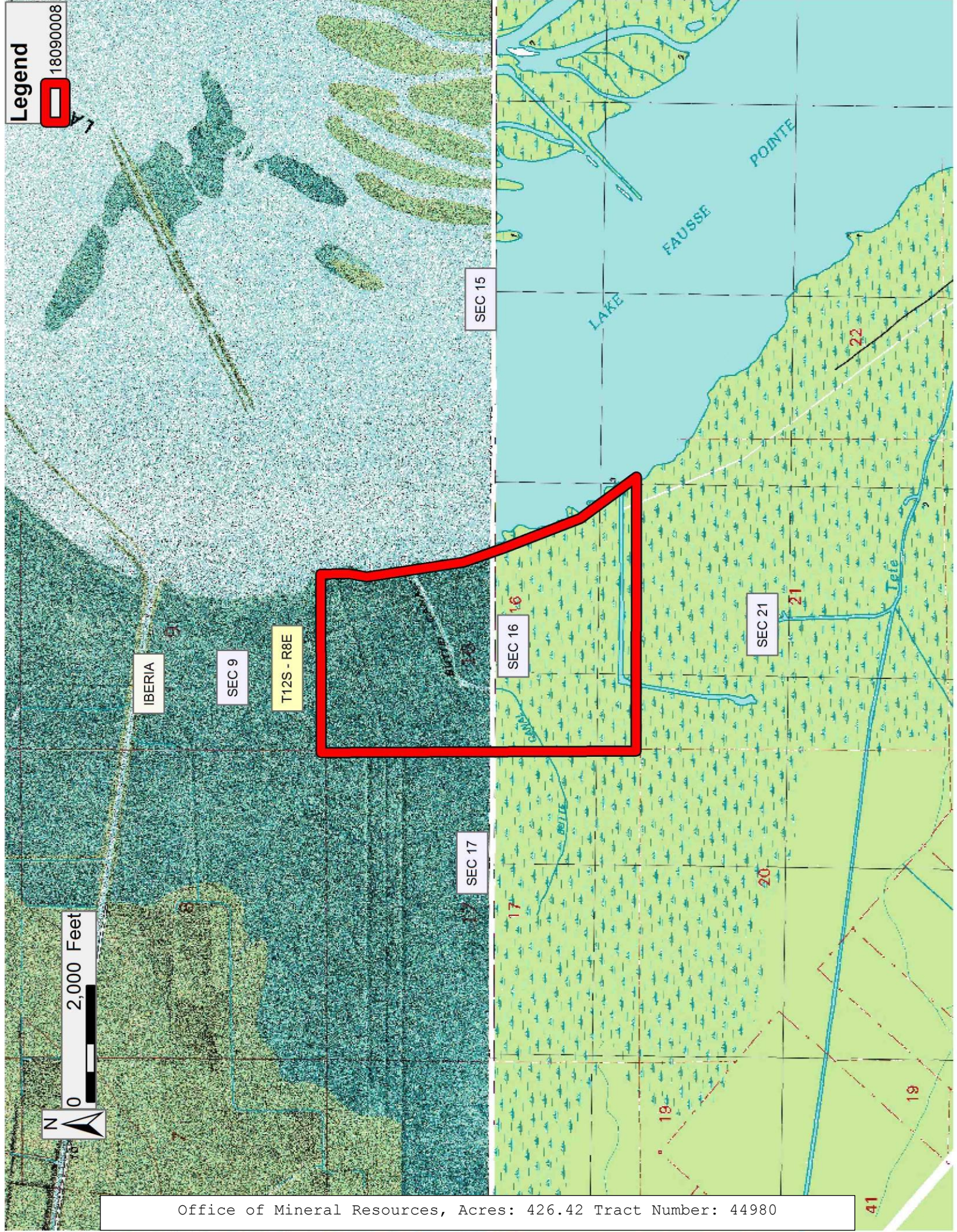
NOTE: The above description of the Tract nominated for lease has been provided and corrected, where required, exclusively by the nomination party. Any mineral lease selected from this Tract and awarded by the Louisiana State Mineral and Energy Board shall be without warranty of any kind, either express, implied, or statutory, including, but not limited to, the implied warranties of merchantability and fitness for a particular purpose. Should the mineral lease awarded by the Louisiana State Mineral and Energy Board be subsequently modified, cancelled or abrogated due to the existence of conflicting leases, operating agreements, private claims or other future obligations or conditions which may affect all or any portion of the leased Tract, it shall not relieve the Lessee of the obligation to pay any bonus due thereon to the Louisiana State Mineral and Energy Board, nor shall the Louisiana State Mineral and Energy Board be obligated to refund any consideration paid by the Lessor prior to such modification, cancellation, or abrogation, including, but not limited to, bonuses, rentals and royalties.

Applicant: MIIA EXPLORATION to Agency and by Resolution from the Iberia Parish School Board authorizing the Mineral Board to act in its behalf

Bidder	Cash Payment	Price/Acre	Rental	Oil	Gas	Other

Legend

18090008



2,000 Feet



Office of Mineral Resources, Acres: 426.42 Tract Number: 44980

TRACT 44981 - Iberia Parish School Board - Iberia Parish, Louisiana

The State Mineral and Energy Board acting on behalf of the Iberia Parish School Board, pursuant to Resolution(s) adopted by that (those) body(ies) and in accordance with Louisiana Revised Statutes 30:121-136 and 151-156, as amended, and Article XIV, Section 16(A)(9) and (B) of the Louisiana Constitution of 1974, as same may be continued and promulgated in proper statutory form and, further, amended from time to time, advertises the lands not under mineral lease on September 12, 2018, excluding the beds and bottoms of all navigable water bodies located within the following: All or a portion of Section 17 and 9 and 21 and 16 and 8, Township 17 South, Range 05 East in Iberia Parish, Louisiana, All of Section 16, Township 17 South, Range 5 East in Iberia Parish, Louisiana, containing approximately **640.20 acres**, all as more particularly outlined on a plat on file in the Office of Mineral Resources, Department of Natural Resources. All bearings, distances and coordinates are based on Louisiana Coordinate System of 1927, (North or South Zone).

NOTE: The above description of the Tract nominated for lease has been provided and corrected, where required, exclusively by the nomination party. Any mineral lease selected from this Tract and awarded by the Louisiana State Mineral and Energy Board shall be without warranty of any kind, either express, implied, or statutory, including, but not limited to, the implied warranties of merchantability and fitness for a particular purpose. Should the mineral lease awarded by the Louisiana State Mineral and Energy Board be subsequently modified, cancelled or abrogated due to the existence of conflicting leases, operating agreements, private claims or other future obligations or conditions which may affect all or any portion of the leased Tract, it shall not relieve the Lessee of the obligation to pay any bonus due thereon to the Louisiana State Mineral and Energy Board, nor shall the Louisiana State Mineral and Energy Board be obligated to refund any consideration paid by the Lessor prior to such modification, cancellation, or abrogation, including, but not limited to, bonuses, rentals and royalties.

Applicant: MIIA EXPLORATION to Agency and by Resolution from the Iberia Parish School Board authorizing the Mineral Board to act in its behalf

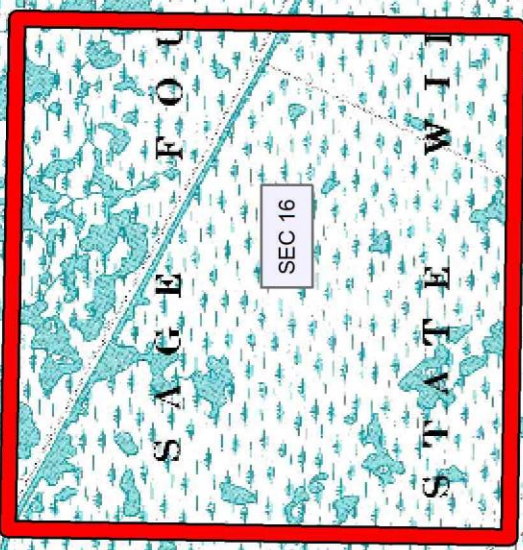
Bidder	Cash Payment	Price/Acre	Rental	Oil	Gas	Other

Legend
18090006

RUSSELL
IBERIA
MARRSH
SAGE FOUNDATION - MARRSH
STATE WILDLIFE REFUGE

0 2,000 Feet

T17S - R5E
SEC 9



SEC 15

SEC 16

SEC 17

SEC 21

10

8

22

21

20

TRACT 44982 - Iberia Parish School Board - Iberia Parish, Louisiana

The State Mineral and Energy Board acting on behalf of the Iberia Parish School Board, pursuant to Resolution(s) adopted by that (those) body(ies) and in accordance with Louisiana Revised Statutes 30:121-136 and 151-156, as amended, and Article XIV, Section 16(A)(9) and (B) of the Louisiana Constitution of 1974, as same may be continued and promulgated in proper statutory form and, further, amended from time to time, advertises the lands not under mineral lease on September 12, 2018, excluding the beds and bottoms of all navigable water bodies located within the following: All or a portion of Section 21 and 22 and 16 and 15, Township 17 South, Range 06 East in Iberia Parish, Louisiana, All of Section 16, Township 17 South, Range 6 East in Iberia Parish, Louisiana, containing approximately **640.68 acres**, all as more particularly outlined on a plat on file in the Office of Mineral Resources, Department of Natural Resources. All bearings, distances and coordinates are based on Louisiana Coordinate System of 1927, (North or South Zone).

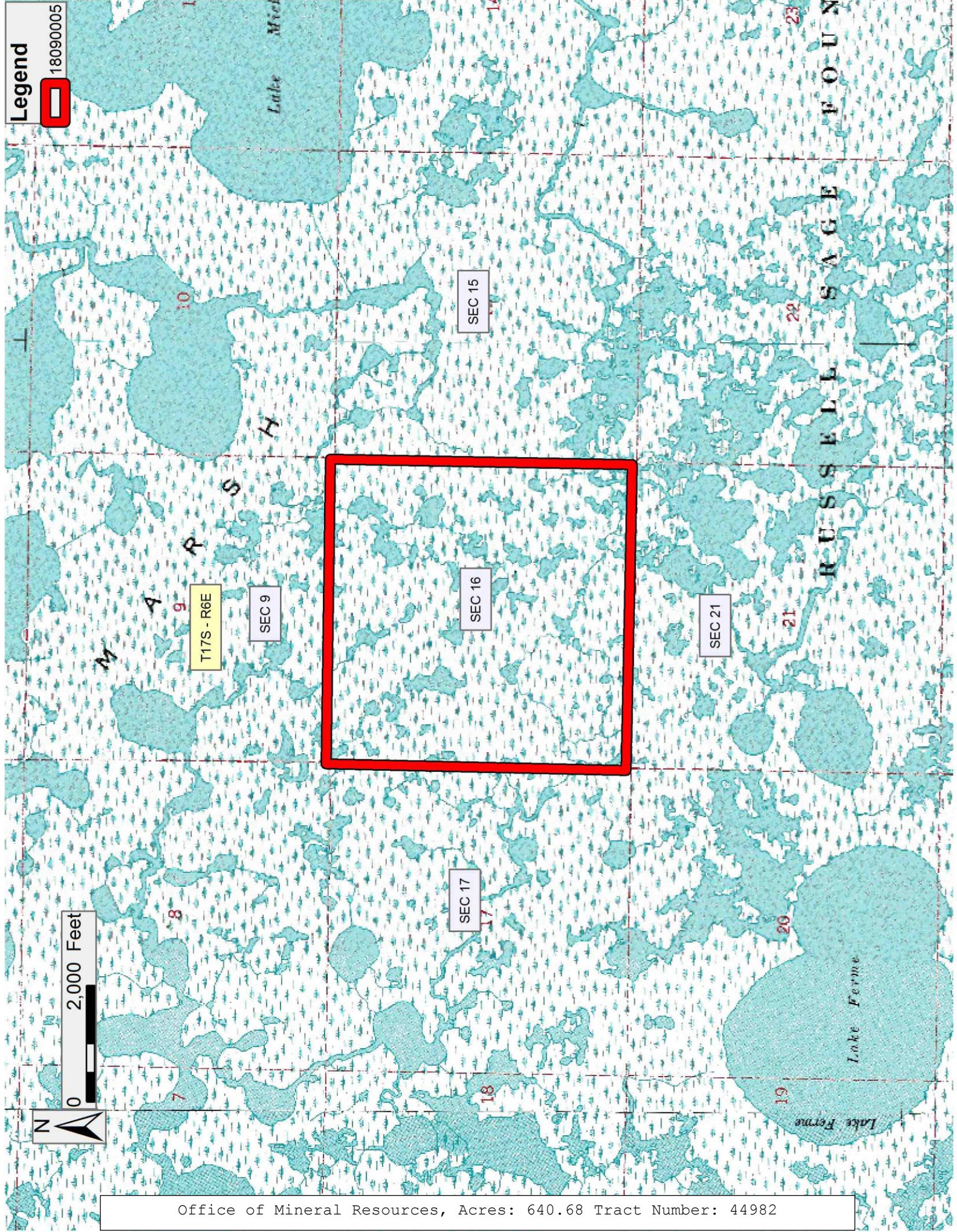
NOTE: The above description of the Tract nominated for lease has been provided and corrected, where required, exclusively by the nomination party. Any mineral lease selected from this Tract and awarded by the Louisiana State Mineral and Energy Board shall be without warranty of any kind, either express, implied, or statutory, including, but not limited to, the implied warranties of merchantability and fitness for a particular purpose. Should the mineral lease awarded by the Louisiana State Mineral and Energy Board be subsequently modified, cancelled or abrogated due to the existence of conflicting leases, operating agreements, private claims or other future obligations or conditions which may affect all or any portion of the leased Tract, it shall not relieve the Lessee of the obligation to pay any bonus due thereon to the Louisiana State Mineral and Energy Board, nor shall the Louisiana State Mineral and Energy Board be obligated to refund any consideration paid by the Lessor prior to such modification, cancellation, or abrogation, including, but not limited to, bonuses, rentals and royalties.

Applicant: MIIA EXPLORATION to Agency and by Resolution from the Iberia Parish School Board authorizing the Mineral Board to act in its behalf

Bidder	Cash Payment	Price/Acre	Rental	Oil	Gas	Other

Legend

18090005



Office of Mineral Resources, Acres: 640.68 Tract Number: 44982