

TRACT 44971 - Jefferson Parish, Louisiana

All of the lands now or formerly constituting the beds and bottoms of all water bodies of every nature and description as to which title is vested in the State of Louisiana, together with all islands arising therein and other lands formed by accretion or by reliction, where allowed by law, excepting tax adjudicated lands, and not presently under mineral lease on September 12, 2018, situated in Jefferson Parish, Louisiana, and more particularly described as follows: Beginning at the Northeast corner of State Lease No. 19949, as amended, having Coordinates of X = 2,428,290.00 and Y = 306,601.93; thence North 88 degrees 58 minutes 43 seconds East 710.11 feet to point having Coordinates of X = 2,429,000.00 and Y = 306,614.59; thence South 6,375.36 feet to a point on the Northern boundary of State Lease No. 21345, as amended, having Coordinates of X = 2,429,000.00 and Y = 300,239.23; thence South 89 degrees 06 minutes 56 seconds West 1,923.53 feet along the North boundary of said State Lease No. 21345 to a point being the Southeast corner of Operating Agreement A0331, as amended, having Coordinates of X = 2,427,076.70 and Y = 300,209.54; thence North 1,090.76 feet along the East boundary of said Operating Agreement A0331 to its Southernmost Northeast corner having Coordinates of X = 2,427,076.70 and Y = 301,300.30; thence North 89 degrees 55 minutes 13 seconds West 0.21 feet to a point being the Southeast corner of Operating Agreement A0321, as amended, having Coordinates of X = 2,427,076.49 and Y = 301,300.30; thence North 01 degrees 02 minutes 04 seconds West 1,428.94 feet along the East boundary of said Southerly retained parcel of A0321 to its Northeast corner having Coordinates of X = 2,427,050.69 and Y = 302,729.00; thence North 01 degrees 01 minutes 37 seconds West 1,695.71 feet to the Southeast corner of the Northerly retained parcel of Operating Agreement A0321, as amended, having Coordinates of X = 2,427,020.30 and Y = 304,424.44; thence North 88 degrees 43 minutes 29 seconds East 0.72 feet to the Southwest corner of State Lease No. 19949, as amended, having Coordinates of X = 2,427,021.02 and Y = 304,424.46; thence along the South and East boundary lines of said State Lease No. 19949 the following courses: North 88 degrees 59 minutes 22 seconds East 1,269.18 feet to a point having Coordinates of X = 2,428,290.00 and Y = 306,446.84 and North 2,155.09 feet to the point of beginning, (This tract includes only waterbottoms claimed and owned by the state and specifically excludes any land which the state may claim or own and to which the mineral rights are vested in the state), containing approximately **149 acres**, all as more particularly outlined on a plat on file in the Office of Mineral Resources, Department of Natural Resources. All bearings, distances and coordinates are based on Louisiana Coordinate System of 1927, (North or South Zone), where applicable.

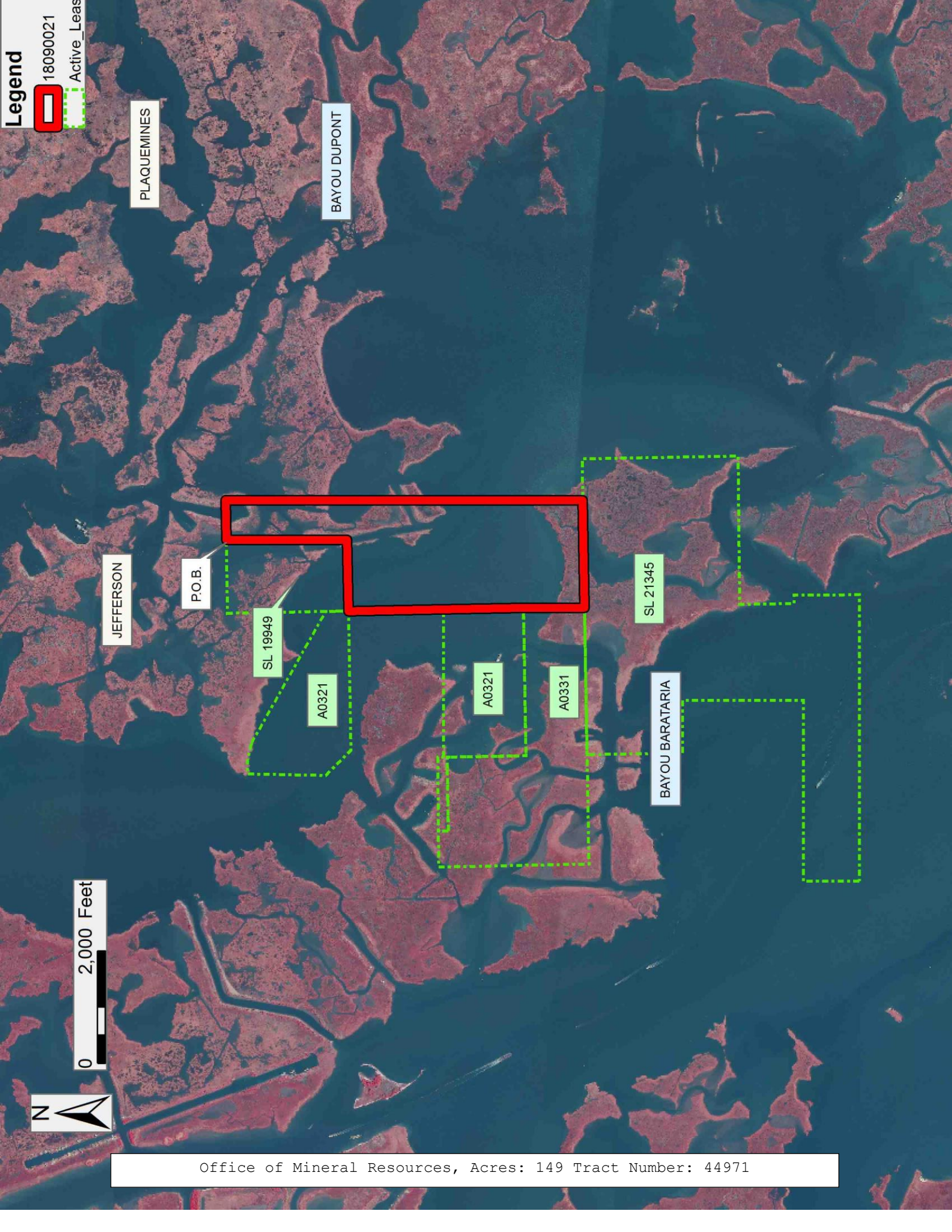
NOTE: The above description of the Tract nominated for lease has been provided and corrected, where required, exclusively by the nomination party. Any mineral lease selected from this Tract and awarded by the Louisiana State Mineral and Energy Board shall be without warranty of any kind, either express, implied, or statutory, including, but not limited to, the implied warranties of merchantability and fitness for a particular purpose. Should the mineral lease awarded by the Louisiana State Mineral and Energy Board be

subsequently modified, cancelled or abrogated due to the existence of conflicting leases, operating agreements, private claims or other future obligations or conditions which may affect all or any portion of the leased Tract, it shall not relieve the Lessee of the obligation to pay any bonus due thereon to the Louisiana State Mineral and Energy Board, nor shall the Louisiana State Mineral and Energy Board be obligated to refund any consideration paid by the Lessor prior to such modification, cancellation, or abrogation, including, but not limited to, bonuses, rentals and royalties.

NOTE: The State of Louisiana does hereby reserve, and this lease shall be subject to, the imprescriptible right of surface use in the nature of a servitude in favor of the Department of Natural Resources, including its Offices and Commissions, for the sole purpose of implementing, constructing, servicing and maintaining approved coastal zone management and/or restoration projects. Utilization of any and all rights derived under this lease by the mineral lessee, its agents, successors or assigns, shall not interfere with nor hinder the reasonable surface use by the Department of Natural Resources, its Offices or Commissions, as herein above reserved.

Applicant: LLOLA, L.L.C.

Bidder	Cash Payment	Price/Acre	Rental	Oil	Gas	Other



Legend

18090021

Active_Leads

JEFFERSON

P.O.B.

SL 19949

A0321

A0321

A0331

SL 21345

BAYOU BARATARIA

BAYOU DUPONT

PLAQUEMINES

0 2,000 Feet



Office of Mineral Resources, Acres: 149 Tract Number: 44971

TRACT 44972 - Portion of Block 116, South Timbalier Area, Revised, Terrebonne Parish, Louisiana

All of the lands now or formerly constituting the beds and bottoms of all water bodies of every nature and description as to which title is vested in the State of Louisiana, together with all islands arising therein and other lands formed by accretion or by reliction, where allowed by law, excepting tax adjudicated lands, and not presently under mineral lease on September 12, 2018, situated in Terrebonne Parish, Louisiana, and more particularly described as follows: Beginning at a point having Coordinates of X = 2,259,799.00 and Y = 190,779.33; thence East 774.01 feet to a point on a Southern boundary of State Lease No. 199, as amended, having Coordinates of X = 2,260,573.01 and Y = 190,779.33; thence along the boundary of said State Lease No. 199 the following courses and distances: South 68 degrees 25 minutes 11 seconds East 800.84 feet to a point having Coordinates of X = 2,261,317.71 and Y = 190,484.78, South 71 degrees 40 minutes 08 seconds East 933.30 feet to a point having Coordinates of X = 2,262,203.65 and Y = 190,191.25, South 73 degrees 32 minutes 14 seconds East 516.49 feet to a point having Coordinates of X = 2,262,698.97 and Y = 190,044.88, South 75 degrees 55 minutes 09 seconds East 243.74 feet to a point having Coordinates of X = 2,262,935.39 and Y = 189,985.58, South 20 degrees 46 minutes 08 seconds West 938.43 feet to a point having Coordinates of X = 2,262,602.62 and Y = 189,108.13; and South 73 degrees 25 minutes 10 seconds East 650.57 feet to the Northwest corner of State Lease No. 21680 having Coordinates of X = 2,263,226.14 and Y = 188,922.48; thence along the boundary of said State Lease No. 21680 the following courses: South 21 degrees 39 minutes 48 seconds West 1,075.02 feet to a point having Coordinates of X = 2,262,829.29 and Y = 187,923.39, South 08 degrees 39 minutes 48 seconds West 2,640.00 feet to a point having Coordinates of X = 2,262,431.63 and Y = 185,313.51, South 07 degrees 34 minutes 48 seconds West 1,000.00 feet to a point having Coordinates of X = 2,262,299.72 and Y = 184,322.25, North 68 degrees 09 minutes 58 seconds East 686.61 feet to a point having Coordinates of X = 2,262,937.07 and Y = 184,577.61, North 63 degrees 59 minutes 52 seconds East 600.03 feet to a point having Coordinates of X = 2,263,476.37 and Y = 184,840.67, North 59 degrees 04 minutes 40 seconds East 999.98 feet to a point having Coordinates of X = 2,264,334.21 and Y = 185,354.53, North 64 degrees 14 minutes 58 seconds East 999.97 feet to a point having Coordinates of X = 2,265,234.88 and Y = 185,788.97, North 71 degrees 14 minutes 30 seconds East 600.02 feet to a point having Coordinates of X = 2,265,803.03 and Y = 185,981.92, North 76 degrees 45 minutes 48 seconds East 590.00 feet to a point having Coordinates of X = 2,266,377.32 and Y = 186,117.19, North 83 degrees 04 minutes 48 seconds East 500.00 feet to a point having Coordinates of X = 2,266,873.67 and Y = 186,177.43, South 89 degrees 25 minutes 12 seconds East 600.00 feet to a point having Coordinates of X = 2,267,473.64 and Y = 186,171.35, South 84 degrees 29 minutes 24 seconds East 600.00 feet to a point having Coordinates of X = 2,268,070.87 and Y = 186,113.74, and South 80 degrees 25 minutes 11 seconds East 547.25 feet to a point having Coordinates of X = 2,268,610.49 and Y = 186,022.67; thence South 10,744.47 feet to a point on the Northern boundary of State Lease No. 301, as amended, having Coordinates of X = 2,268,610.49 and Y = 175,278.20;

thence along the boundary of said State Lease No. 301 the following courses: North 71 degrees 10 minutes 13 seconds West 435.40 feet to a point having Coordinates of X = 2,268,198.39 and Y = 175,418.73, West 2,969.74 feet to a point having Coordinates of X = 2,265,228.65 and Y = 175,418.73, North 900.00 feet to a point having Coordinates of X = 2,265,228.65 and Y = 176,318.73, and West 3,150.00 feet to the Northeast corner of State Lease No. 1247, as amended, having Coordinates of X = 2,262,078.65 and Y = 176,318.73; thence North 00 degrees 24 minutes 55 seconds West 1,917.68 feet to a point having Coordinates of X = 2,262,064.75 and Y = 178,236.36; thence West 2,265.75 feet to a point within Block 116, South Timbalier Area, Revised, having Coordinates of X = 2,259,799.00 and Y = 178,236.36; thence North 12,542.97 feet to the point of beginning, containing approximately **2,182.49 acres**, all as more particularly outlined on a plat on file in the Office of Mineral Resources, Department of Natural Resources. All bearings, distances and coordinates are based on Louisiana Coordinate System of 1927, (North or South Zone), where applicable.

NOTE: The above description of the Tract nominated for lease has been provided and corrected, where required, exclusively by the nomination party. Any mineral lease selected from this Tract and awarded by the Louisiana State Mineral and Energy Board shall be without warranty of any kind, either express, implied, or statutory, including, but not limited to, the implied warranties of merchantability and fitness for a particular purpose. Should the mineral lease awarded by the Louisiana State Mineral and Energy Board be subsequently modified, cancelled or abrogated due to the existence of conflicting leases, operating agreements, private claims or other future obligations or conditions which may affect all or any portion of the leased Tract, it shall not relieve the Lessee of the obligation to pay any bonus due thereon to the Louisiana State Mineral and Energy Board, nor shall the Louisiana State Mineral and Energy Board be obligated to refund any consideration paid by the Lessor prior to such modification, cancellation, or abrogation, including, but not limited to, bonuses, rentals and royalties.

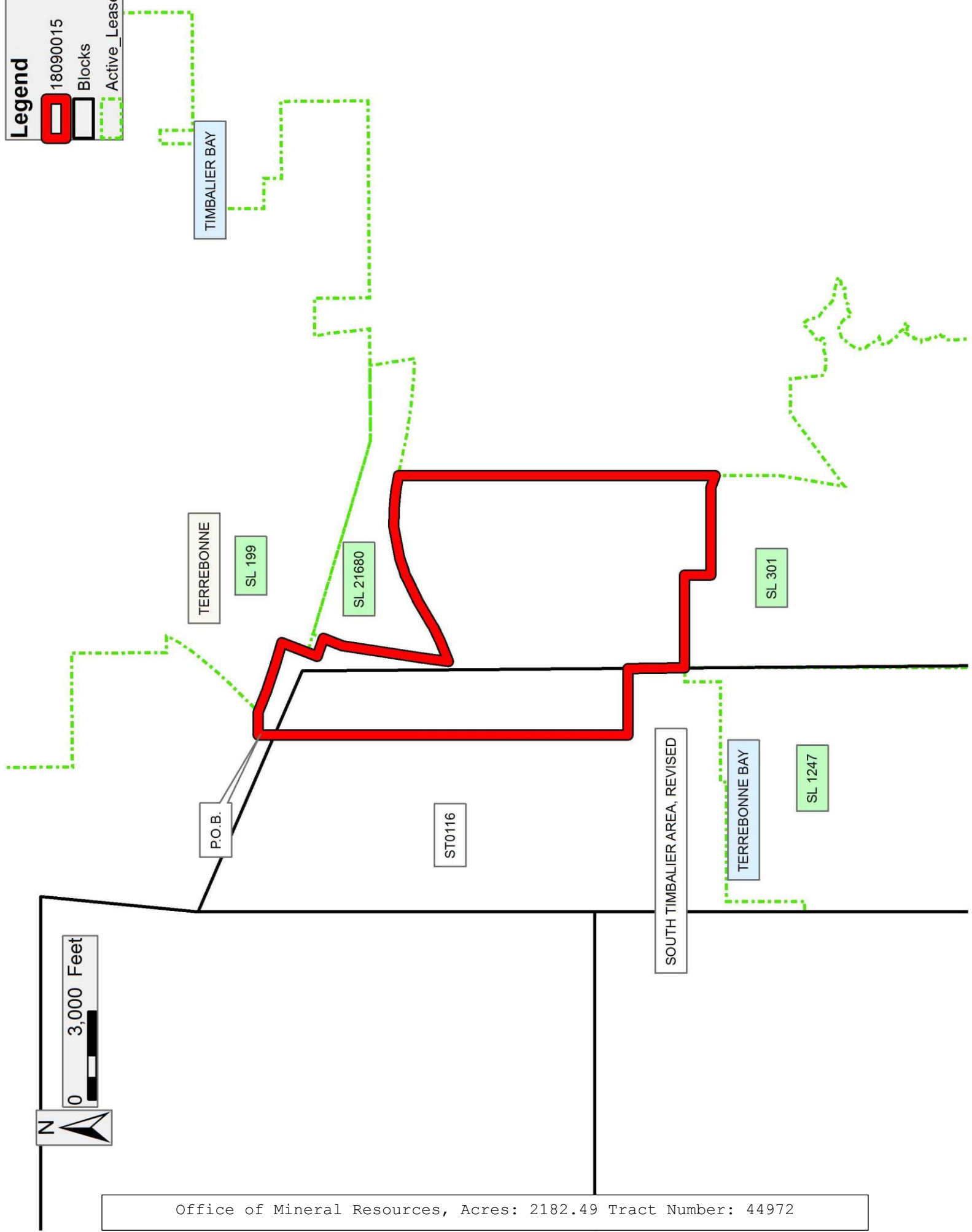
NOTE: The State of Louisiana does hereby reserve, and this lease shall be subject to, the imprescriptible right of surface use in the nature of a servitude in favor of the Department of Natural Resources, including its Offices and Commissions, for the sole purpose of implementing, constructing, servicing and maintaining approved coastal zone management and/or restoration projects. Utilization of any and all rights derived under this lease by the mineral lessee, its agents, successors or assigns, shall not interfere with nor hinder the reasonable surface use by the Department of Natural Resources, its Offices or Commissions, as herein above reserved.

Applicant: THEOPHILUS OIL, GAS & LAND SERVICES, LLC

Bidder	Cash Payment	Price/Acre	Rental	Oil	Gas	Other

Legend

- 18090015
- Blocks
- Active_Leases



TRACT 44973 - Terrebonne Parish, Louisiana

All of the lands now or formerly constituting the beds and bottoms of all water bodies of every nature and description as to which title is vested in the State of Louisiana, together with all islands arising therein and other lands formed by accretion or by reliction, where allowed by law, excepting tax adjudicated lands, and not presently under mineral lease on September 12, 2018, situated in Terrebonne Parish, Louisiana, and more particularly described as follows: Beginning at a point on the Southern boundary of State Lease No. 21680, having Coordinates of X = 2,268,610.49 and Y = 186,022.67; thence along the boundary of said State Lease No. 21680 the following courses: South 80 degrees 25 minutes 11 seconds East 302.76 feet to a point having Coordinates of X = 2,268,909.03 and Y = 185,972.28, South 77 degrees 50 minutes 39 seconds East 1,099.97 feet to a point having Coordinates of X = 2,269,984.33 and Y = 185,740.65, South 81 degrees 49 minutes 30 seconds East 483.71 feet to a point having Coordinates of X = 2,270,463.13 and Y = 185,671.87, South 81 degrees 50 minutes 01 seconds East 526.25 feet to a point having Coordinates of X = 2,270,984.03 and Y = 185,597.12, South 84 degrees 25 minutes 12 seconds East 1000.00 feet to a point having Coordinates of X = 2,271,979.30 and Y = 185,499.88, South 87 degrees 35 minutes 12 seconds East 600.01 feet to a point having Coordinates of X = 2,272,578.77 and Y = 185,474.62, North 09 degrees 05 minutes 15 seconds West 1,468.97 feet to a point having Coordinates of X = 2,272,346.76 and Y = 186,925.15, and North 09 degrees 04 minutes 08 seconds West 71.03 feet to a point having Coordinates of X = 2,272,335.56 and Y = 186,995.30, said point also being a point on the Southern boundary of State Lease No. 199, as amended; thence along the boundary of said State Lease No. 199 the following courses: North 89 degrees 34 minutes 51 seconds East 1,240.85 feet to a point having Coordinates of X = 2,273,576.38 and Y = 187,004.38, North 06 degrees 12 minutes 15 seconds West 1,392.69 feet to a point having Coordinates of X = 2,273,425.87 and Y = 188,388.91, North 11 degrees 26 minutes 05 seconds West 488.47 feet to a point having Coordinates of X = 2,273,329.03 and Y = 188,867.68, North 89 degrees 34 minutes 50 seconds East 1,285.28 feet to a point having Coordinates of X = 2,274,614.27 and Y = 188,877.09, South 00 degrees 25 minutes 10 seconds East 1,865.06 feet to a point having Coordinates of X = 2,274,627.93 and Y = 187,012.08 and North 89 degrees 34 minutes 50 seconds East 565.00 feet to a point having Coordinates of X = 2,275,192.92 and Y = 187,016.22; thence South 11,943.92 feet to a point on the North boundary of the Northern portion of said State Lease No. 188, as amended, having Coordinates of X = 2,275,192.92 and Y = 175,072.29; thence along the boundary of said portion of said State Lease No. 188 the following courses: South 89 degrees 35 minutes 01 seconds West 915.33 feet to a point having Coordinates of X = 2,274,277.61 and Y = 175,065.64, South 2,079.29 feet to a point having Coordinates of X = 2,274,277.61 and Y = 172,986.36, South 45 degrees 00 minutes 00 seconds West 360.00 feet to a point having Coordinates of X = 2,274,023.05 and Y = 172,731.80 and West 2,140.40 feet to its Westernmost Northwest point, also being the Northeast point of State Lease No. 301, as amended, having Coordinates of X = 2,271,882.65 and Y = 172,731.80; thence along the boundary of said State Lease No. 301 the following courses: West 1,159.59 feet to a point having Coordinates of X =

2,270,723.05 and Y = 172,731.80, South 53 degrees 30 minutes 00 seconds West 3,089.99 feet to a point having Coordinates of X = 2,268,239.14 and Y = 170,893.80, North 09 degrees 30 minutes 00 seconds East 2,250.00 feet to a point having Coordinates of X = 2,268,610.49 and Y = 173,112.94 and North 2,165.27 feet to a point having Coordinates of X = 2,268,610.49 and Y = 175,278.20; thence North 10,744.47 feet to the point of beginning, containing approximately **2,086.77 acres**, all as more particularly outlined on a plat on file in the Office of Mineral Resources, Department of Natural Resources. All bearings, distances and coordinates are based on Louisiana Coordinate System of 1927, (North or South Zone), where applicable.

NOTE: The above description of the Tract nominated for lease has been provided and corrected, where required, exclusively by the nomination party. Any mineral lease selected from this Tract and awarded by the Louisiana State Mineral and Energy Board shall be without warranty of any kind, either express, implied, or statutory, including, but not limited to, the implied warranties of merchantability and fitness for a particular purpose. Should the mineral lease awarded by the Louisiana State Mineral and Energy Board be subsequently modified, cancelled or abrogated due to the existence of conflicting leases, operating agreements, private claims or other future obligations or conditions which may affect all or any portion of the leased Tract, it shall not relieve the Lessee of the obligation to pay any bonus due thereon to the Louisiana State Mineral and Energy Board, nor shall the Louisiana State Mineral and Energy Board be obligated to refund any consideration paid by the Lessor prior to such modification, cancellation, or abrogation, including, but not limited to, bonuses, rentals and royalties.

NOTE: The State of Louisiana does hereby reserve, and this lease shall be subject to, the imprescriptible right of surface use in the nature of a servitude in favor of the Department of Natural Resources, including its Offices and Commissions, for the sole purpose of implementing, constructing, servicing and maintaining approved coastal zone management and/or restoration projects. Utilization of any and all rights derived under this lease by the mineral lessee, its agents, successors or assigns, shall not interfere with nor hinder the reasonable surface use by the Department of Natural Resources, its Offices or Commissions, as herein above reserved.

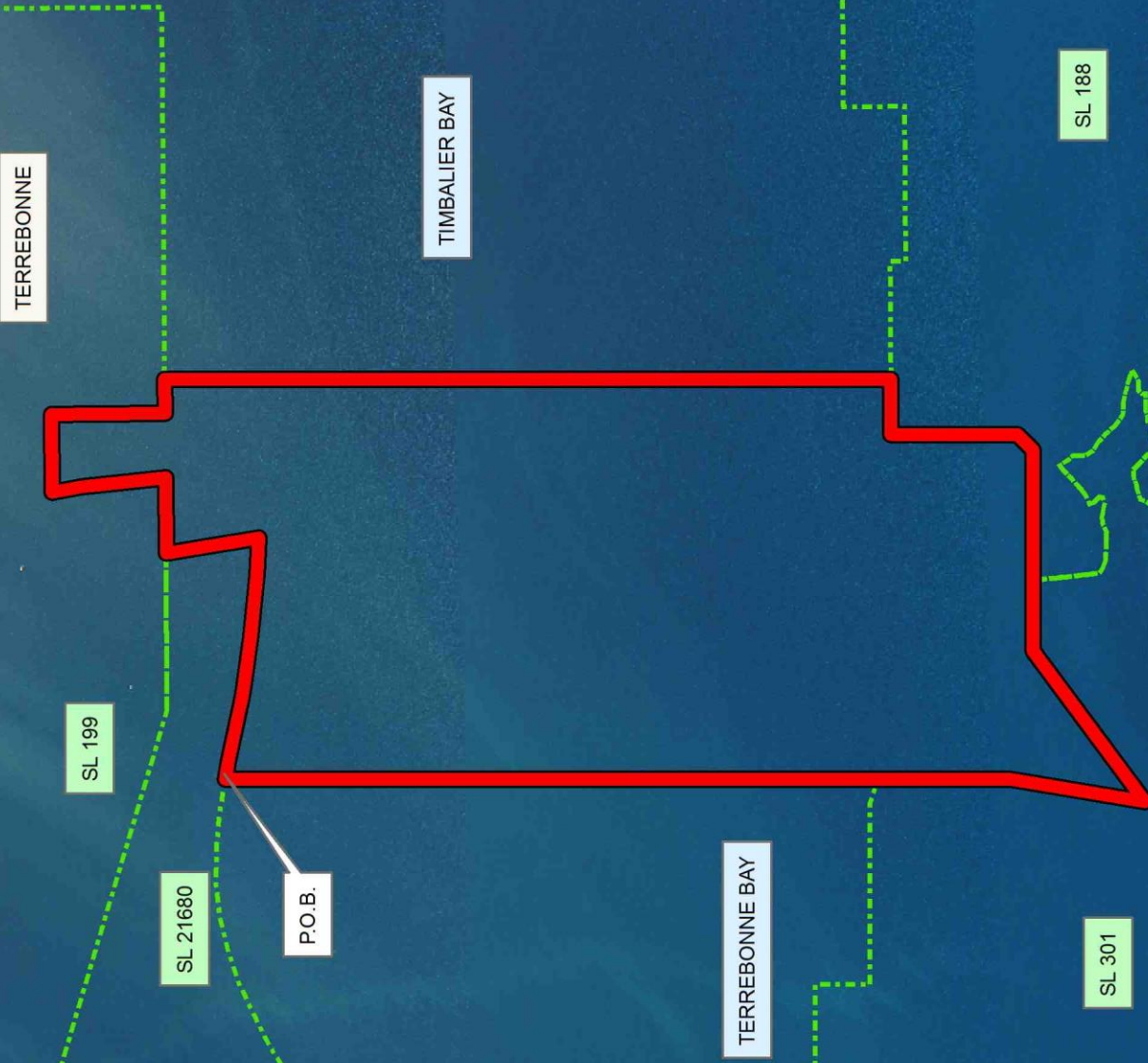
Applicant: THEOPHILUS OIL, GAS & LAND SERVICES, LLC

Bidder	Cash Payment	Price/Acre	Rental	Oil	Gas	Other

Legend
18090016
Active_Leads



0 2,500 Feet



Office of Mineral Resources, Acres: 2086.77 Tract Number: 44973

TRACT 44974 - Terrebonne Parish, Louisiana

All of the lands now or formerly constituting the beds and bottoms of all water bodies of every nature and description as to which title is vested in the State of Louisiana, together with all islands arising therein and other lands formed by accretion or by reliction, where allowed by law, excepting tax adjudicated lands, and not presently under mineral lease on September 12, 2018, situated in Terrebonne Parish, Louisiana, and more particularly described as follows: Beginning at a point having Coordinates of X = 2,275,192.92 and Y = 182,583.22; thence East approximately 4,893 feet to a point on the Western boundary of Special Section 16, Township 22 South, Range 20 East, Terrebonne Parish, Louisiana; thence along the boundary of said Special Section 16 the following courses and distances: Southerly approximately 3,306 feet to a point, Easterly approximately 5,240 feet to a point and Northerly approximately 3,244 feet to a point of intersection with an East/West line having a Coordinate of Y = 182,583.22; thence East approximately 3,012 feet to a point having Coordinates of X = 2,288,317.72 and Y = 182,583.22; thence South 10,863.52 feet to a point having Coordinates of X = 2,288,317.72 and Y = 171,719.70; thence West 92.69 feet to the Northeast corner of the Northern portion of State Lease No. 188, as amended, having Coordinates of X = 2,288,225.03 and Y = 171,719.70; thence along the boundary of said State Lease No. 188 the following courses and distances: South 89 degrees 35 minutes 01 seconds West 3,303.00 feet to a corner having Coordinates of X = 2,284,922.11 and Y = 171,695.70, North 35 degrees 24 minutes 59 seconds West 950.00 feet to a corner having Coordinates of X = 2,284,371.58 and Y = 172,469.91, North 00 degrees 24 minutes 59 seconds West 2,811.75 feet to a corner having Coordinates of X = 2,284,351.14 and Y = 175,281.59, Northwesterly along an arc to the left, having a radius of 15,840.00 feet and a center point having Coordinates of X = 2,276,860.59 and Y = 161,324.61 to a corner having Coordinates of X = 2,283,109.64 and Y = 175,879.85, South 89 degrees 35 minutes 01 seconds West 3,437.64 feet to a corner having Coordinates of X = 2,279,672.09 and Y = 175,854.87, South 00 degrees 24 minutes 59 seconds East 1,006.32 feet to a corner having Coordinates of X = 2,279,679.41 and Y = 174,848.58, South 89 degrees 35 minutes 01 seconds West 2,550.00 feet to a corner having Coordinates of X = 2,277,129.47 and Y = 174,830.04, North 00 degrees 24 minutes 59 seconds West 256.33 feet to a corner having Coordinates of X = 2,277,127.61 and Y = 175,086.36 and South 89 degrees 35 minutes 01 seconds West 1,934.74 feet to a point having Coordinates of X = 2,275,192.92 and Y = 175,072.29; thence North 7,510.93 feet to the point of beginning, containing approximately **2,106.27 acres**, all as more particularly outlined on a plat on file in the Office of Mineral Resources, Department of Natural Resources. All bearings, distances and coordinates are based on Louisiana Coordinate System of 1927, (North or South Zone), where applicable.

NOTE: The above description of the Tract nominated for lease has been provided and corrected, where required, exclusively by the nomination party. Any mineral lease selected from this Tract and awarded by the Louisiana State Mineral and Energy Board shall be without warranty of any kind, either express, implied, or statutory, including, but not limited to, the implied

warranties of merchantability and fitness for a particular purpose. Should the mineral lease awarded by the Louisiana State Mineral and Energy Board be subsequently modified, cancelled or abrogated due to the existence of conflicting leases, operating agreements, private claims or other future obligations or conditions which may affect all or any portion of the leased Tract, it shall not relieve the Lessee of the obligation to pay any bonus due thereon to the Louisiana State Mineral and Energy Board, nor shall the Louisiana State Mineral and Energy Board be obligated to refund any consideration paid by the Lessor prior to such modification, cancellation, or abrogation, including, but not limited to, bonuses, rentals and royalties.

NOTE: The State of Louisiana does hereby reserve, and this lease shall be subject to, the imprescriptible right of surface use in the nature of a servitude in favor of the Department of Natural Resources, including its Offices and Commissions, for the sole purpose of implementing, constructing, servicing and maintaining approved coastal zone management and/or restoration projects. Utilization of any and all rights derived under this lease by the mineral lessee, its agents, successors or assigns, shall not interfere with nor hinder the reasonable surface use by the Department of Natural Resources, its Offices or Commissions, as herein above reserved.

Applicant: THEOPHILUS OIL, GAS & LAND SERVICES, LLC

Bidder	Cash Payment	Price/Acre	Rental	Oil	Gas	Other



Legend



18090017

Active_Leases

TERREBONNE

TIMBALIER BAY

P.O.B.

SL 188

TERREBONNE BAY

TRACT 44975 - Portion of Blocks 115, 116, and 117, South Timbalier Area, Revised, Terrebonne Parish, Louisiana

All of the lands now or formerly constituting the beds and bottoms of all water bodies of every nature and description as to which title is vested in the State of Louisiana, together with all islands arising therein and other lands formed by accretion or by reliction, where allowed by law, excepting tax adjudicated lands, and not presently under mineral lease on September 12, 2018, situated in Terrebonne Parish, Louisiana, and more particularly described as follows: Beginning at a point within Block 115, South Timbalier Area, Revised, having Coordinates of X = 2,243,988.98 and Y = 179,571.74; thence East 15,810.02 feet to a point situated within Block 116, South Timbalier Area, Revised, having Coordinates of X = 2,259,799.00 and Y = 179,571.74; thence South 1,335.38 feet to a point having Coordinates of X = 2,259,799.00 and Y = 178,236.36; thence East 2,265.75 feet to a point having Coordinates of X = 2,262,064.75 and Y = 178,236.36; thence South 00 degrees 24 minutes 55 seconds East 1,917.68 feet to the Northeast corner of State Lease No. 1247, as amended, also being the Northwest corner of State Lease No. 301, as amended, having Coordinates of X = 2,262,078.65 and Y = 176,318.73; thence along the boundary of said State Lease No. 1247, the following courses and distances: West 470.61 feet to a point having Coordinates of X = 2,261,608.04 and Y = 176,318.73, South 1,223.25 feet to a point having Coordinates of X = 2,261,608.04 and Y = 175,095.48, West 3,400.00 feet to a point having Coordinates of X = 2,258,208.04 and Y = 175,095.48, South 200.00 feet to a point having Coordinates of X = 2,258,208.04 and Y = 174,895.48, West 4,050.00 feet to a point having Coordinates of X = 2,254,158.04 and Y = 174,895.48, South 2,650.00 feet to a point having Coordinates of X = 2,254,158.04 and Y = 172,245.48, and West 350.00 feet to a point having Coordinates of X = 2,253,808.04 and Y = 172,245.48; thence West 9,819.06 feet to a point having Coordinates of X = 2,243,988.98 and Y = 172,245.48; thence North 7,326.26 feet to the point of beginning, containing approximately **2,459.43 acres**, all as more particularly outlined on a plat on file in the Office of Mineral Resources, Department of Natural Resources. All bearings, distances and coordinates are based on Louisiana Coordinate System of 1927, (North or South Zone), where applicable.

NOTE: The above description of the Tract nominated for lease has been provided and corrected, where required, exclusively by the nomination party. Any mineral lease selected from this Tract and awarded by the Louisiana State Mineral and Energy Board shall be without warranty of any kind, either express, implied, or statutory, including, but not limited to, the implied warranties of merchantability and fitness for a particular purpose. Should the mineral lease awarded by the Louisiana State Mineral and Energy Board be subsequently modified, cancelled or abrogated due to the existence of conflicting leases, operating agreements, private claims or other future obligations or conditions which may affect all or any portion of the leased Tract, it shall not relieve the Lessee of the obligation to pay any bonus due thereon to the Louisiana State Mineral and Energy Board, nor shall the Louisiana State Mineral and Energy Board be obligated to refund any

consideration paid by the Lessor prior to such modification, cancellation, or abrogation, including, but not limited to, bonuses, rentals and royalties.

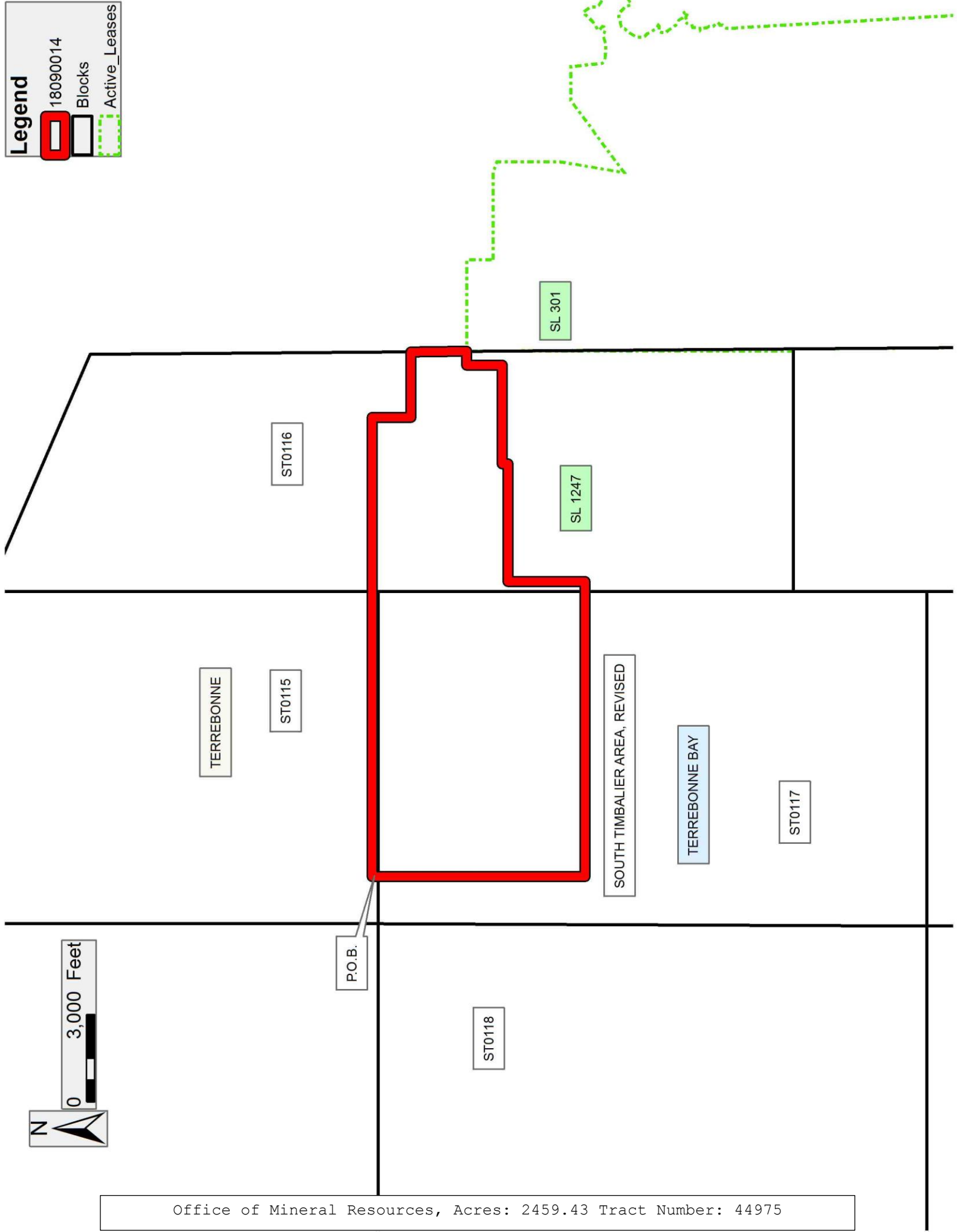
NOTE: The State of Louisiana does hereby reserve, and this lease shall be subject to, the imprescriptible right of surface use in the nature of a servitude in favor of the Department of Natural Resources, including its Offices and Commissions, for the sole purpose of implementing, constructing, servicing and maintaining approved coastal zone management and/or restoration projects. Utilization of any and all rights derived under this lease by the mineral lessee, its agents, successors or assigns, shall not interfere with nor hinder the reasonable surface use by the Department of Natural Resources, its Offices or Commissions, as herein above reserved.

Applicant: THEOPHILUS OIL, GAS & LAND SERVICES, LLC

Bidder	Cash Payment	Price/Acre	Rental	Oil	Gas	Other

Legend

- 18090014
- Blocks
- Active_Leases



TRACT 44976 - Portion of Block 117, South Timbalier Area, Revised, Terrebonne Parish, Louisiana

All of the lands now or formerly constituting the beds and bottoms of all water bodies of every nature and description as to which title is vested in the State of Louisiana, together with all islands arising therein and other lands formed by accretion or by reliction, where allowed by law, excepting tax adjudicated lands, and not presently under mineral lease on September 12, 2018, situated in Terrebonne Parish, Louisiana, and more particularly described as follows: Beginning at a point within Block 117, South Timbalier Area, Revised, having Coordinates of X = 2,243,988.98 and Y = 172,245.48; thence East 9,819.05 feet to a point on the East boundary of said Block 117, also being a point on the West boundary of State Lease No. 1247, as amended, having Coordinates of X = 2,253,808.03 and Y = 172,245.48; thence South 2,167.79 feet along said East boundary of said Block 117, also being along said Western boundary of said State Lease No. 1247 to a point on a Northern boundary of State Lease No. 2856, as amended, having Coordinates of X = 2,253,808.03 and Y = 170,077.69; thence along the boundary of said State Lease No. 2856, the following courses and distances: West 2,248.99 feet to a point having Coordinates of X = 2,251,559.04 and Y = 170,077.69, South 3,050.00 feet to a point having Coordinates of X = 2,251,559.04 and Y = 167,027.69, West 2,250.00 feet to a point having Coordinates of X = 2,249,309.04 and Y = 167,027.69, South 3,750.00 feet to a point having Coordinates of X = 2,249,309.04 and Y = 163,277.69, East 450.00 feet to a point having Coordinates of X = 2,249,759.04 and Y = 163,277.69, and South 2,814.89 feet to its Southwest corner, also being a point on the South line of said Block 117, having Coordinates of X = 2,249,759.04 and Y = 160,462.80; thence West 5,770.06 feet along said South line of said Block 117, to a point having Coordinates of X = 2,243,988.98 and Y = 160,462.80; thence North 11,782.68 feet to the point of beginning, containing approximately **1,849.56 acres**, all as more particularly outlined on a plat on file in the Office of Mineral Resources, Department of Natural Resources. All bearings, distances and coordinates are based on Louisiana Coordinate System of 1927, (North or South Zone), where applicable.

NOTE: The above description of the Tract nominated for lease has been provided and corrected, where required, exclusively by the nomination party. Any mineral lease selected from this Tract and awarded by the Louisiana State Mineral and Energy Board shall be without warranty of any kind, either express, implied, or statutory, including, but not limited to, the implied warranties of merchantability and fitness for a particular purpose. Should the mineral lease awarded by the Louisiana State Mineral and Energy Board be subsequently modified, cancelled or abrogated due to the existence of conflicting leases, operating agreements, private claims or other future obligations or conditions which may affect all or any portion of the leased Tract, it shall not relieve the Lessee of the obligation to pay any bonus due thereon to the Louisiana State Mineral and Energy Board, nor shall the Louisiana State Mineral and Energy Board be obligated to refund any consideration paid by the Lessor prior to such modification, cancellation, or abrogation, including, but not limited to, bonuses, rentals and royalties.

NOTE: The State of Louisiana does hereby reserve, and this lease shall be subject to, the imprescriptible right of surface use in the nature of a servitude in favor of the Department of Natural Resources, including its Offices and Commissions, for the sole purpose of implementing, constructing, servicing and maintaining approved coastal zone management and/or restoration projects. Utilization of any and all rights derived under this lease by the mineral lessee, its agents, successors or assigns, shall not interfere with nor hinder the reasonable surface use by the Department of Natural Resources, its Offices or Commissions, as herein above reserved.

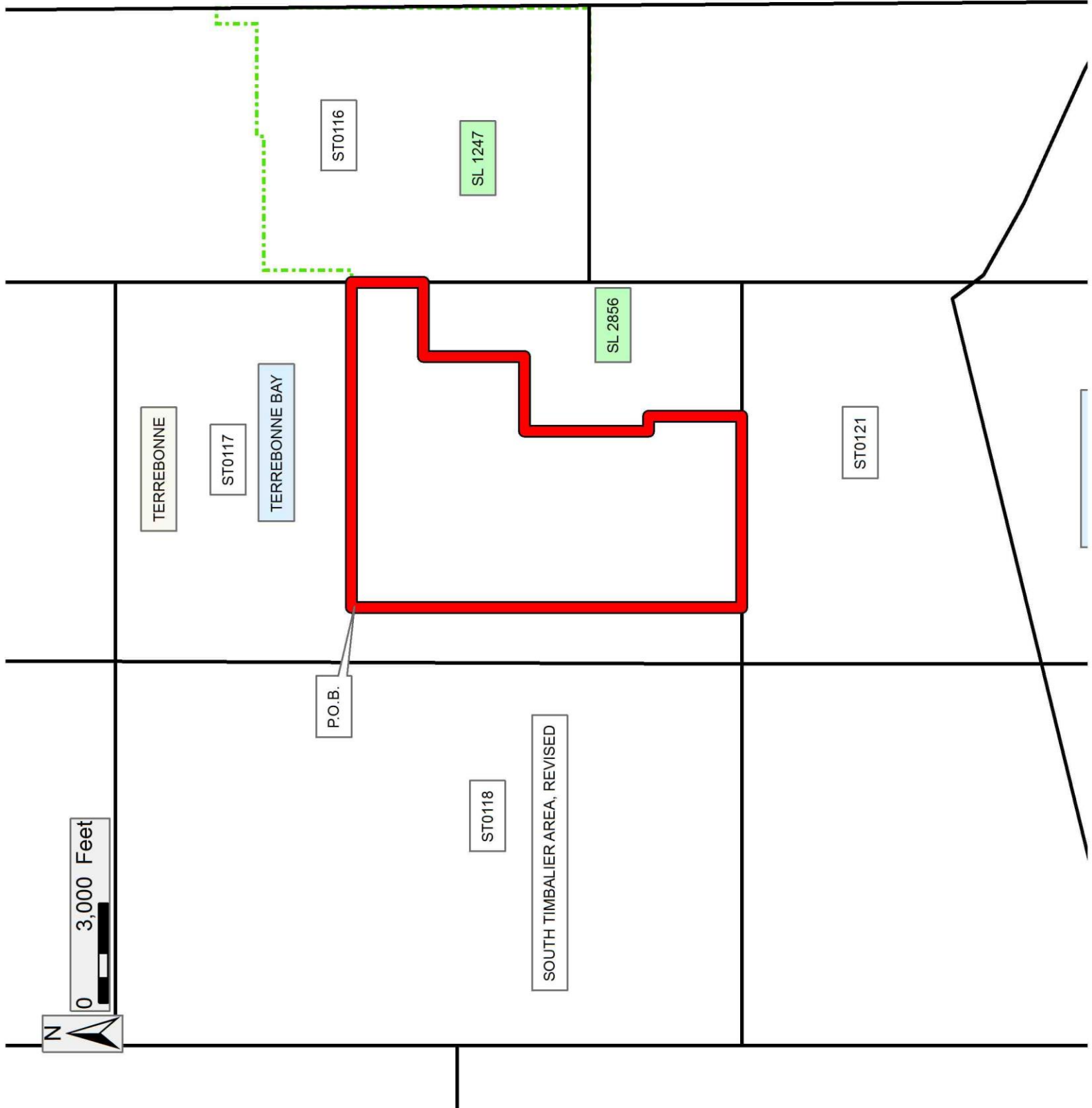
NOTE: It appears, according to our records, that a portion of this Tract is located within the restrictive safety fairway area as set out by the Corps of Engineers, U.S. Army and/or the restrictive anchorage area as set out by the U.S. Coast Guard.

Applicant: THEOPHILUS OIL, GAS & LAND SERVICES, LLC

Bidder	Cash Payment	Price/Acre	Rental	Oil	Gas	Other

Legend

- 18090013
- Blocks
- Active_Leases



Office of Mineral Resources, Acres: 1849.56 Tract Number: 44976