

TRACT 44785 - Portion of Block 116, South Timbalier Area, Revised, Terrebonne Parish, Louisiana

All of the lands now or formerly constituting the beds and bottoms of all water bodies of every nature and description as to which title is vested in the State of Louisiana, together with all islands arising therein and other lands formed by accretion or by reliction, where allowed by law, excepting tax adjudicated lands, and not presently under mineral lease on September 13, 2017, situated in Terrebonne Parish, Louisiana, and more particularly described as follows: Beginning at a point within Block 116, South Timbalier Area, Revised, having Coordinates of X = 2,258,691.20 and Y = 189,108.13; thence East 3,911.42 feet to a point on the Southern boundary of State Lease No. 199, as amended, having Coordinates of X = 2,262,602.62 and Y = 189,108.13; thence South 73 degrees 25 minutes 10 seconds East 650.57 feet along the boundary of said State Lease No. 199 to a point on the boundary of State Lease No. 21680, having Coordinates of X = 2,263,226.14 and Y = 188,922.48; thence along the boundary of said State Lease No. 21680 the following courses and distances: South 21 degrees 39 minutes 48 seconds West 1,075.02 feet to a point having Coordinates of X = 2,262,829.29 and Y = 187,923.39, South 08 degrees 39 minutes 48 seconds West 2,640.00 feet to a point having Coordinates of X = 2,262,431.63 and Y = 185,313.51, South 07 degrees 34 minutes 48 seconds West 1,000.00 feet to a point having Coordinates of X = 2,262,299.72 and Y = 184,322.25, North 68 degrees 09 minutes 58 seconds East 686.61 feet to a point having Coordinates of X = 2,262,937.07 and Y = 184,577.61, North 63 degrees 59 minutes 52 seconds East 600.03 feet to a point having Coordinates of X = 2,263,476.37 and Y = 184,840.67, North 59 degrees 04 minutes 40 seconds East 999.98 feet to a point having Coordinates of X = 2,264,334.21 and Y = 185,354.53, North 64 degrees 14 minutes 58 seconds East 999.97 feet to a point having Coordinates of X = 2,265,234.88 and Y = 185,788.97, North 71 degrees 14 minutes 30 seconds East 600.02 feet to a point having Coordinates of X = 2,265,803.03 and Y = 185,981.92, North 76 degrees 44 minutes 40 seconds East 590.01 feet to a point having Coordinates of X = 2,266,377.32 and Y = 186,117.19, North 83 degrees 04 minutes 48 seconds East 500.00 feet to a point having Coordinates of X = 2,266,873.67 and Y = 186,177.43, South 89 degrees 25 minutes 12 seconds East 600.00 feet to a point having Coordinates of X = 2,267,473.64 and Y = 186,171.35, South 84 degrees 29 minutes 24 seconds East 600.00 feet to a point having Coordinates of X = 2,268,070.87 and Y = 186,113.74, South 80 degrees 25 minutes 11 seconds East 850.01 feet to a point having Coordinates of X = 2,268,909.03 and Y = 185,972.28, South 77 degrees 50 minutes 39 seconds East 1,099.97 feet to a point having Coordinates of X = 2,269,984.33 and Y = 185,740.65, South 81 degrees 49 minutes 30 seconds East 483.71 feet to a point having Coordinates of X = 2,270,463.13 and Y = 185,671.87, South 81 degrees 50 minutes 01 seconds East 526.29 feet to a point having Coordinates of X = 2,270,984.08 and Y = 185,597.12, South 84 degrees 25 minutes 12 seconds East 1,000.00 feet to a point having Coordinates of X = 2,271,979.30 and Y = 185,499.88, and South 87 degrees 35 minutes 12 seconds East 600.00 feet to a point having Coordinates of X = 2,272,578.77 and Y = 185,474.62; thence South 2,466.49 feet to a point having

Coordinates of X = 2,272,578.77 and Y = 183,008.13; thence West 13,887.57 feet to a point having Coordinates of X = 2,258,691.20 and Y = 183,008.13; thence North 6,100.00 feet to the point of beginning, containing approximately **1,164.18 acres**, all as more particularly outlined on a plat on file in the Office of Mineral Resources, Department of Natural Resources. All bearings, distances and coordinates are based on Louisiana Coordinate System of 1927, (North or South Zone), where applicable.

NOTE: The above description of the Tract nominated for the purpose of acquiring a mineral lease or a geophysical agreement has been provided and corrected, where required, exclusively by the nominating party. Any mineral lease or geophysical agreement selected from this Tract and awarded by the Louisiana State Mineral and Energy Board shall be without warranty of any kind, either express, implied or statutory including, but not limited to, title or the implied warranties of merchantability and fitness for a particular purpose.




An error or omission in the nominating party's Tract description may require that a State mineral lease or geophysical agreement be modified, canceled or abrogated due to the existence of conflicting leases, operating agreements, private claims or other future obligations or conditions within the Tract described. In such case, however, the Louisiana State Mineral and Energy Board shall not be obligated to refund any consideration paid by the Lessee prior to such modification, cancellation or abrogation including, but not limited to, bonuses, rentals and royalties.

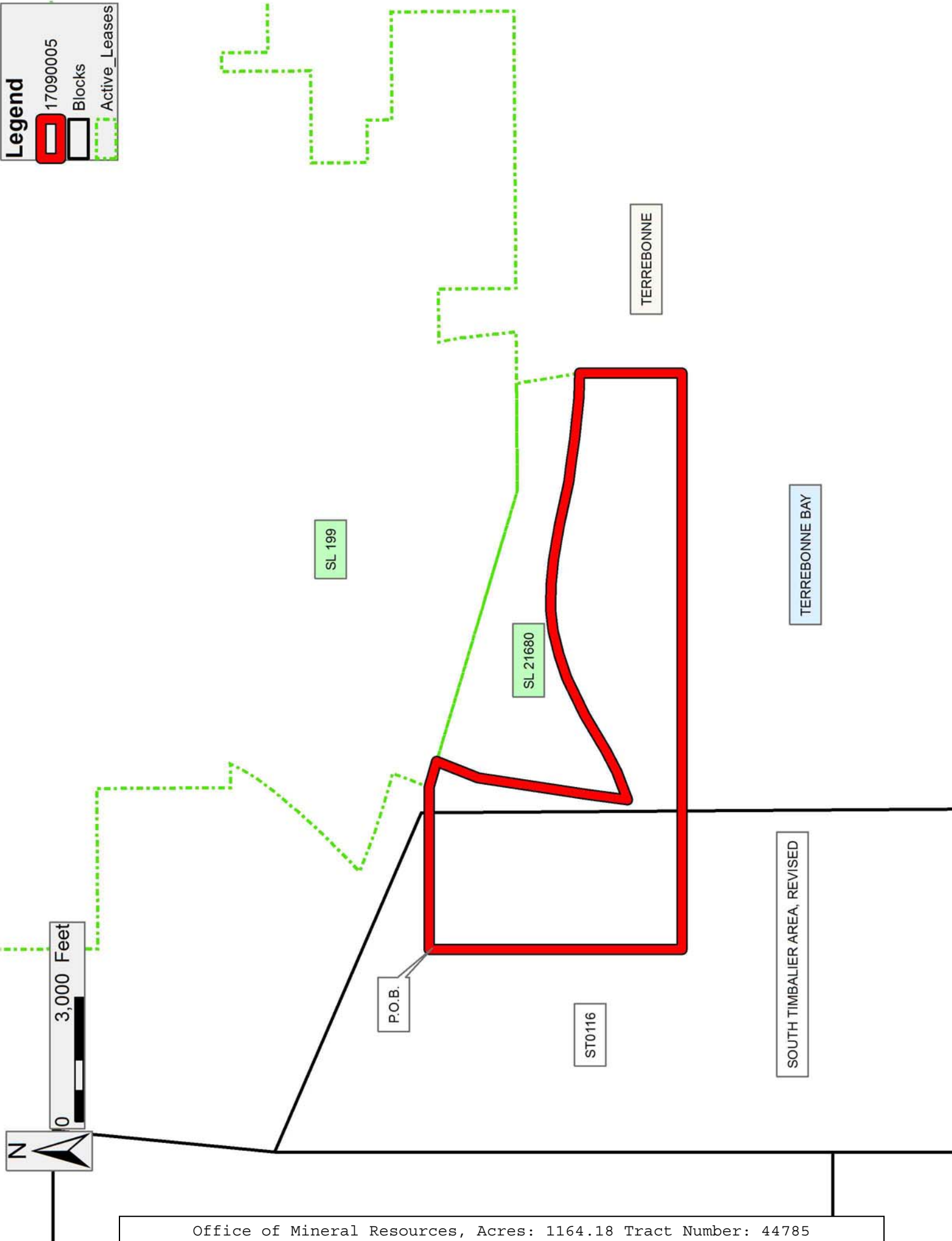
NOTE: The State of Louisiana does hereby reserve, and this lease shall be subject to, the imprescriptible right of surface use in the nature of a servitude in favor of the Department of Natural Resources, including its Offices and Commissions, for the sole purpose of implementing, constructing, servicing and maintaining approved coastal zone management and/or restoration projects. Utilization of any and all rights derived under this lease by the mineral lessee, its agents, successors or assigns, shall not interfere with nor hinder the reasonable surface use by the Department of Natural Resources, its Offices or Commissions, as herein above reserved.

Bidder	Cash Payment	Price/Acre	Rental	Oil	Gas	Other

Applicant: THEOPHILUS OIL, GAS & LAND SERVICES, LLC

Legend

-  17090005
-  Blocks
-  Active_Leases



TRACT 44786 - Terrebonne Parish, Louisiana

All of the lands now or formerly constituting the beds and bottoms of all water bodies of every nature and description as to which title is vested in the State of Louisiana, together with all islands arising therein and other lands formed by accretion or by reliction, where allowed by law, excepting tax adjudicated lands, and not presently under mineral lease on September 13, 2017, situated in Terrebonne Parish, Louisiana, and more particularly described as follows: Beginning at a point having Coordinates of X = 2,274,277.61 and Y = 183,008.13; thence East approximately 5,781 feet to a point on the boundary of Special Section 16, Township 22 South, Range 20 East, having a Coordinate of Y = 183,008.13; thence along the boundary of said Special Section 16, the following courses and distances: Southerly approximately 3,705 feet to a point and Easterly approximately 4,254 feet to a point; thence Southerly approximately 4,022 feet to a point on the boundary of State Lease No. 188, as amended, having Coordinates of X = 2,284,351.14 and Y = 175,281.59; thence along the boundary of said State Lease No. 188, the following courses and distances: Northeasterly along an Arc to the left, having a radius of 15,840.00 feet and a center having X = 2,276,860.58 and Y = 161,324.61 to a point having Coordinates of X = 2,283,109.64 and Y = 175,879.85, South 89 degrees 35 minutes 01 seconds West 3,437.63 feet to a point having Coordinates of X = 2,279,672.10 and Y = 175,854.87, South 00 degrees 24 minutes 59 seconds East 1,006.32 feet to a point having Coordinates of X = 2,279,679.41 and Y = 174,848.58, South 89 degrees 35 minutes 01 seconds West 2,550.00 feet to a point having Coordinates of X = 2,277,129.47 and Y = 174,830.04, North 00 degrees 25 minutes 05 seconds West 256.33 feet to a point having Coordinates of X = 2,277,127.61 and Y = 175,086.36, and South 89 degrees 35 minutes 00 seconds West 2,850.08 feet to a point having Coordinates of X = 2,274,277.61 and Y = 175,065.64; thence North 7,942.49 feet to the point of beginning, **LESS AND EXCEPT** any right, title, and interest in lands owned by and not under lease from the State of Louisiana, Special Section 16, situated in Section 16, Township 22 South, Range 20 East, Terrebonne Parish, Louisiana, containing approximately **1,408 acres**, all as more particularly outlined on a plat on file in the Office of Mineral Resources, Department of Natural Resources. All bearings, distances and coordinates are based on Louisiana Coordinate System of 1927, (North or South Zone), where applicable.

NOTE: The above description of the Tract nominated for the purpose of acquiring a mineral lease or a geophysical agreement has been provided and corrected, where required, exclusively by the nominating party. Any mineral lease or geophysical agreement selected from this Tract and awarded by the Louisiana State Mineral and Energy Board shall be without warranty of any kind, either express, implied or statutory including, but not limited to, title or the implied warranties of merchantability and fitness for a particular purpose.

An error or omission in the nominating party's Tract description may require that a State mineral lease or geophysical agreement be modified,

canceled or abrogated due to the existence of conflicting leases, operating agreements, private claims or other future obligations or conditions within the Tract described. In such case, however, the Louisiana State Mineral and Energy Board shall not be obligated to refund any consideration paid by the Lessee prior to such modification, cancellation or abrogation including, but not limited to, bonuses, rentals and royalties.

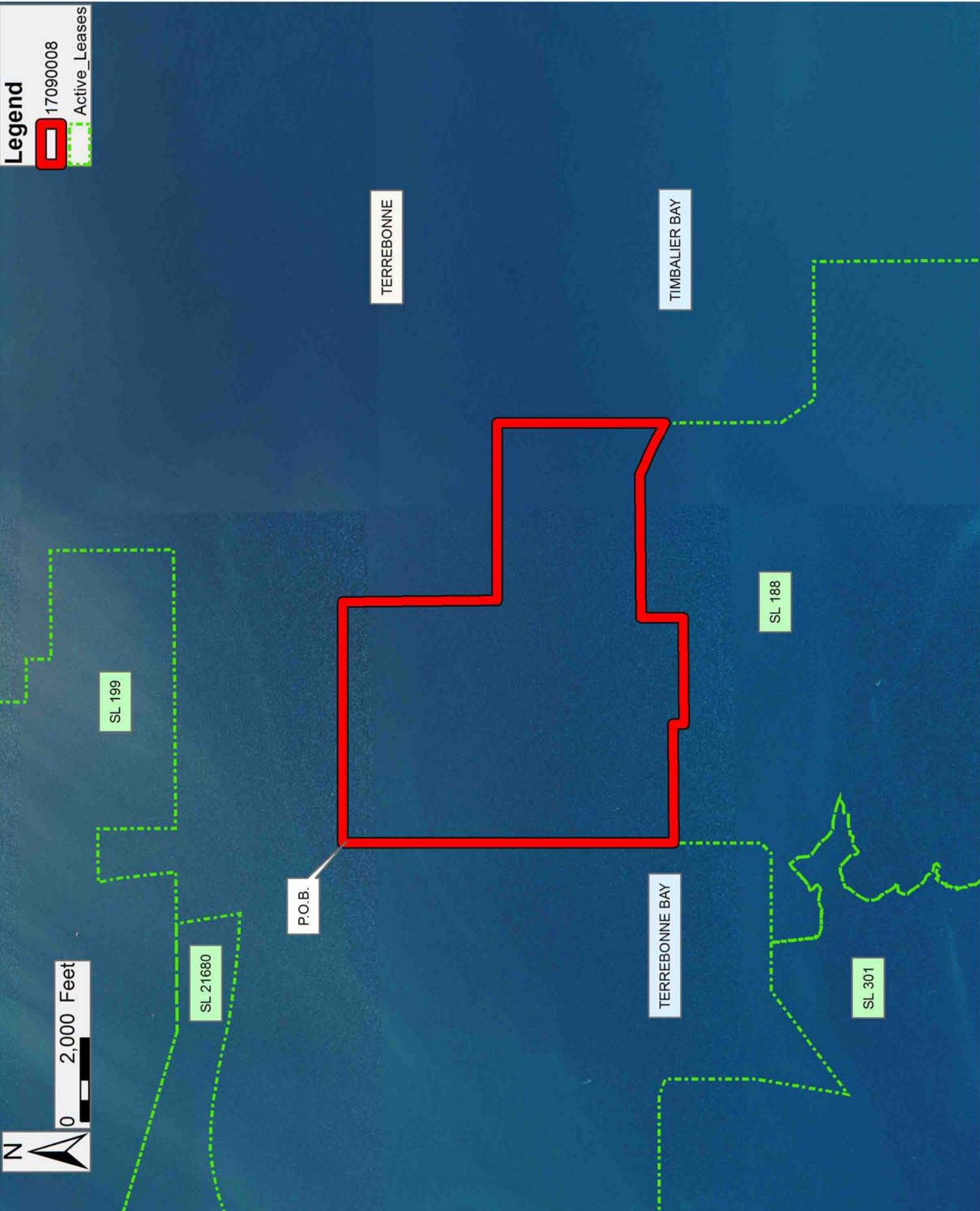
NOTE: The State of Louisiana does hereby reserve, and this lease shall be subject to, the imprescriptible right of surface use in the nature of a servitude in favor of the Department of Natural Resources, including its Offices and Commissions, for the sole purpose of implementing, constructing, servicing and maintaining approved coastal zone management and/or restoration projects. Utilization of any and all rights derived under this lease by the mineral lessee, its agents, successors or assigns, shall not interfere with nor hinder the reasonable surface use by the Department of Natural Resources, its Offices or Commissions, as herein above reserved.

Applicant: THEOPHILUS OIL, GAS & LAND SERVICES, LLC

Bidder	Cash Payment	Price/Acre	Rental	Oil	Gas	Other

Legend

-  17090008
-  Active_Leases



TRACT 44787 - Terrebonne Parish, Louisiana

All of the lands now or formerly constituting the beds and bottoms of all water bodies of every nature and description as to which title is vested in the State of Louisiana, together with all islands arising therein and other lands formed by accretion or by reliction, where allowed by law, excepting tax adjudicated lands, and not presently under mineral lease on September 13, 2017, situated in Terrebonne Parish, Louisiana, and more particularly described as follows: Beginning at a point having Coordinates of X = 2,265,228.65 and Y = 183,008.13; thence East 9,048.96 feet to a point having Coordinates of X = 2,274,277.61 and Y = 183,008.13; thence South 7,942.49 feet to a point on the boundary of State Lease No. 188, as amended, having Coordinates of X = 2,274,277.61 and Y = 175,065.64; thence along the boundary of said State Lease No. 188, the following courses and distances: South 2,079.29 feet to a point having Coordinates of X = 2,274,277.61 and Y = 172,986.36, South 45 degrees 00 minutes 00 seconds West 360.00 feet to a point having Coordinates of X = 2,274,023.05 and Y = 172,731.80, and West 2,140.41 feet to a point on the boundary of State Lease No. 301, as amended, having Coordinates of X = 2,271,882.65 and Y = 172,731.80; thence along the boundary of said State Lease No. 301, the following courses and distances: West 1,159.59 feet to a point having Coordinates of X = 2,270,723.05 and Y = 172,731.80, South 53 degrees 30 minutes 00 seconds West 3,090.00 feet to a point having Coordinates of X = 2,268,239.14 and Y = 170,893.80, North 09 degrees 30 minutes 00 seconds East 2,250.00 feet to a point having Coordinates of X = 2,268,610.49 and Y = 173,112.94, North 2,165.27 feet to a point having Coordinates of X = 2,268,610.49 and Y = 175,278.20, North 71 degrees 10 minutes 13 seconds West 435.40 feet to a point having Coordinates of X = 2,268,198.39 and Y = 175,418.73, West 2,969.74 feet to a point having Coordinates of X = 2,265,228.65 and Y = 175,418.73, and North 900.00 feet to a point having Coordinates of X = 2,265,228.65 and Y = 176,318.73; thence North 6,689.40 feet to the point of beginning, containing approximately **1,972.27 acres**, all as more particularly outlined on a plat on file in the Office of Mineral Resources, Department of Natural Resources. All bearings, distances and coordinates are based on Louisiana Coordinate System of 1927, (North or South Zone), where applicable.

NOTE: The above description of the Tract nominated for the purpose of acquiring a mineral lease or a geophysical agreement has been provided and corrected, where required, exclusively by the nominating party. Any mineral lease or geophysical agreement selected from this Tract and awarded by the Louisiana State Mineral and Energy Board shall be without warranty of any kind, either express, implied or statutory including, but not limited to, title or the implied warranties of merchantability and fitness for a particular purpose.

An error or omission in the nominating party's Tract description may require that a State mineral lease or geophysical agreement be modified, canceled or abrogated due to the existence of conflicting leases, operating agreements, private claims or other future obligations or

conditions within the Tract described. In such case, however, the Louisiana State Mineral and Energy Board shall not be obligated to refund any consideration paid by the Lessee prior to such modification, cancellation or abrogation including, but not limited to, bonuses, rentals and royalties.

NOTE: The State of Louisiana does hereby reserve, and this lease shall be subject to, the imprescriptible right of surface use in the nature of a servitude in favor of the Department of Natural Resources, including its Offices and Commissions, for the sole purpose of implementing, constructing, servicing and maintaining approved coastal zone management and/or restoration projects. Utilization of any and all rights derived under this lease by the mineral lessee, its agents, successors or assigns, shall not interfere with nor hinder the reasonable surface use by the Department of Natural Resources, its Offices or Commissions, as herein above reserved.

Applicant: THEOPHILUS OIL, GAS & LAND SERVICES, LLC

Bidder	Cash Payment	Price/Acre	Rental	Oil	Gas	Other

Legend
17090007
Active_Leases

