

**TRACT 44775 - Union Parish, Louisiana**

All of the lands now or formerly constituting the beds and bottoms of all water bodies of every nature and description as to which title is vested in the State of Louisiana, together with all islands arising therein and other lands formed by accretion or by reliction, where allowed by law, excepting tax adjudicated lands, and not presently under mineral lease on September 13, 2017, situated in Union Parish, Louisiana, and more particularly described as follows: Beginning at a point having Coordinates of X = 2,038,796.97 and Y = 807,617.28; thence South 52 degrees 00 minutes 00 seconds East 18,480.00 feet to a point having Coordinates of X = 2,053,359.41 and Y = 796,239.85; thence West 5,820.25 feet to a point being the Northeast corner of State Lease No. 21322, as amended, having Coordinates of X = 2,047,539.16 and Y = 796,239.85, said point also being the Southeast corner of State Lease No. 21320, as amended; thence along the boundary of said State Lease No. 21320, as amended, the following: North 00 degrees 20 minutes 10 seconds East 4,137.73 feet to a point having Coordinates of X = 2,047,563.44 and Y = 800,377.51, North 52 degrees 00 minutes 00 seconds West 3,872.18 feet to a point having Coordinates of X = 2,044,512.13 and Y = 802,761.47, North 89 degrees 48 minutes 37 seconds West 2,248.20 feet to a point having Coordinates of X = 2,042,263.94 and Y = 802,768.91, and South 00 degrees 24 minutes 01 seconds West 6,529.22 feet to a point being the Southwest corner of said State Lease No. 21320 having Coordinates of X = 2,042,218.34 and Y = 796,239.85, said point also being the Northwest corner of said State Lease No. 21322, as amended; thence West 7,338.93 feet to a point having Coordinates of X = 2,034,879.41 and Y = 796,239.85; thence North 52 degrees 00 minutes 00 seconds West 18,480.00 feet to a point having Coordinates of X = 2,020,316.97 and Y = 807,617.28; thence East 18,480.00 feet to the point of beginning, containing approximately **55 acres**, all as more particularly outlined on a plat on file in the Office of Mineral Resources, Department of Natural Resources. All bearings, distances and coordinates are based on Louisiana Coordinate System of 1927, (North or South Zone), where applicable.

NOTE: The above description of the Tract nominated for the purpose of acquiring a mineral lease or a geophysical agreement has been provided and corrected, where required, exclusively by the nominating party. Any mineral lease or geophysical agreement selected from this Tract and awarded by the Louisiana State Mineral and Energy Board shall be without warranty of any kind, either express, implied or statutory including, but not limited to, title or the implied warranties of merchantability and fitness for a particular purpose.

An error or omission in the nominating party's Tract description may require that a State mineral lease or geophysical agreement be modified, canceled or abrogated due to the existence of conflicting leases, operating agreements, private claims or other future obligations or conditions within the Tract described. In such case, however, the Louisiana State Mineral and Energy Board shall not be obligated to refund any consideration paid by the Lessee prior to such modification,

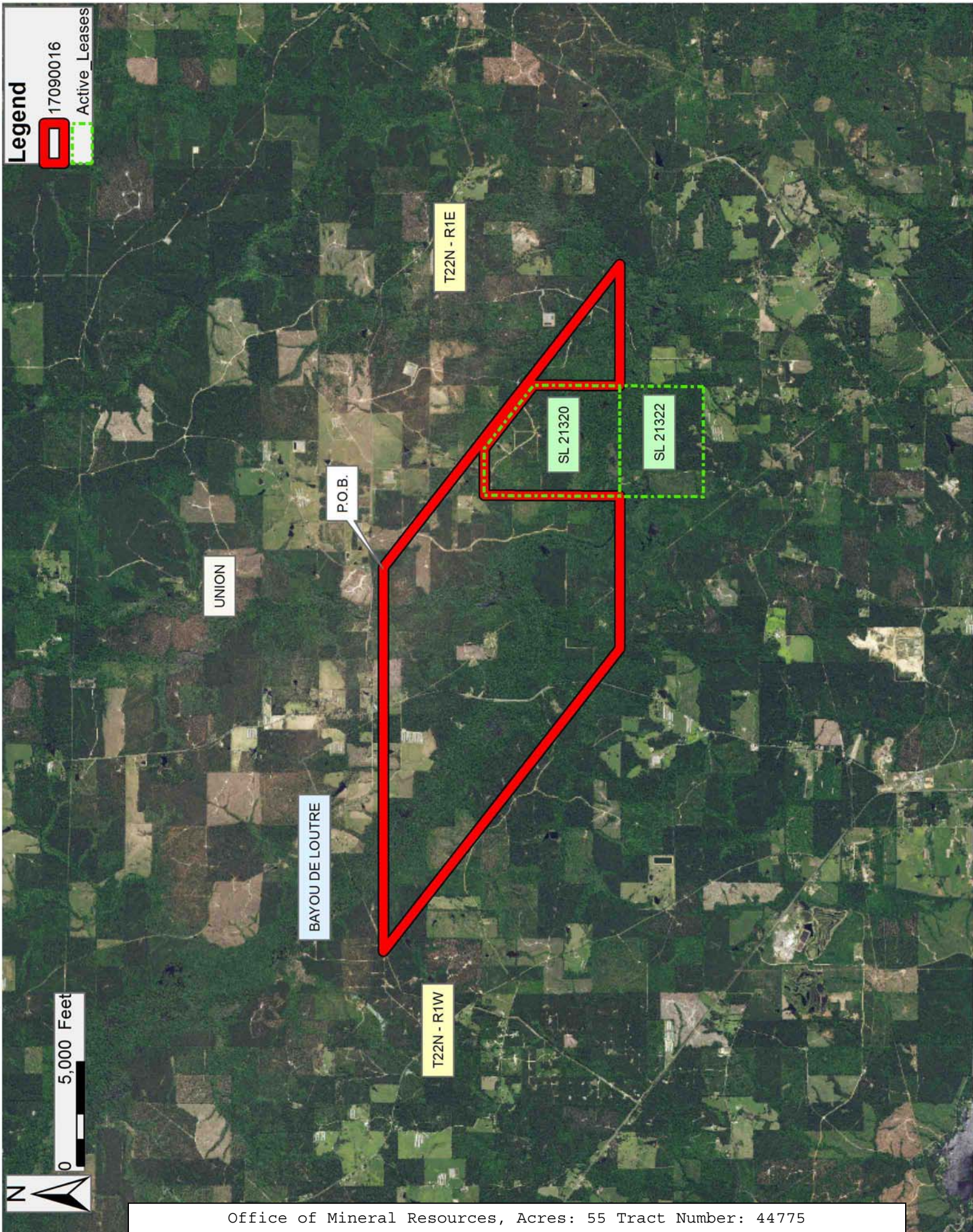
cancellation or abrogation including, but not limited to, bonuses, rentals and royalties.

NOTE: A portion of this tract is located on or adjacent to a Louisiana designated Natural and Scenic River. The applicant must obtain authorization from the Louisiana Department of Wildlife and Fisheries, Scenic Rivers Program prior to initiating any activities within or adjacent to the river, including, but not limited to, crossings by roads and pipelines, well sites, production facilities and water withdrawals.

Applicant: DUDLEY LAND COMPANY

Bidder	Cash Payment	Price/ Acre	Rental	Oil	Gas	Other







**TRACT 44776 - Union Parish, Louisiana**

All of the lands now or formerly constituting the beds and bottoms of all water bodies of every nature and description as to which title is vested in the State of Louisiana, together with all islands arising therein and other lands formed by accretion or by reliction, where allowed by law, excepting tax adjudicated lands, and not presently under mineral lease on September 13, 2017, situated in Union Parish, Louisiana, and more particularly described as follows: Beginning at a point having Coordinates of X = 2,055,399.64 and Y = 796,239.85; thence South 52 degrees 00 minutes 00 seconds East 18,480.00 feet to a point having Coordinates of X = 2,069,962.08 and Y = 784,862.43; thence West 18,480.00 feet to a point having Coordinates of X = 2,051,482.08 and Y=784,862.43; thence North 52 degrees 00 minutes 00 seconds West 18,480.00 feet to a point having Coordinates of X = 2,036,919.64 and Y = 796.239.85; thence East 5,298.70 feet to a point being the Southwest corner of State Lease No. 21320, as amended, having Coordinates of X = 2,042,218.34 and Y = 796,239.85, said point also being the Northwest corner of State Lease No. 21322, as amended; thence along the boundary of said State Lease No. 21322, as amended, the following: South 00 degrees 31 minutes 06 seconds West 4,024.52 feet to a point having Coordinates of X = 2,042,197.58 and Y=792,215.38, North 89 degrees 58 minutes 01 seconds East 5,292.67 to a point having Coordinates of X = 2,047,490.41 and Y = 792,218.43, and North 00 degrees 43 minutes 03 seconds East 4,021.72 feet to a point being the Northeast corner of said State Lease No. 21322, having Coordinates of X = 2,047,539.16 and Y = 796,239.85, said point also being the Southeast corner of said State Lease No. 21320, as amended; thence East 7,860.48 feet to the point of beginning, containing **43 acres**, all as more particularly outlined on a plat on file in the Office of Mineral Resources, Department of Natural Resources. All bearings, distances and coordinates are based on Louisiana Coordinate System of 1927, (North or South Zone), where applicable.

NOTE: The above description of the Tract nominated for the purpose of acquiring a mineral lease or a geophysical agreement has been provided and corrected, where required, exclusively by the nominating party. Any mineral lease or geophysical agreement selected from this Tract and awarded by the Louisiana State Mineral and Energy Board shall be without warranty of any kind, either express, implied or statutory including, but not limited to, title or the implied warranties of merchantability and fitness for a particular purpose.

An error or omission in the nominating party's Tract description may require that a State mineral lease or geophysical agreement be modified, canceled or abrogated due to the existence of conflicting leases, operating agreements, private claims or other future obligations or conditions within the Tract described. In such case, however, the Louisiana State Mineral and Energy Board shall not be obligated to refund any consideration paid by the Lessee prior to such modification,

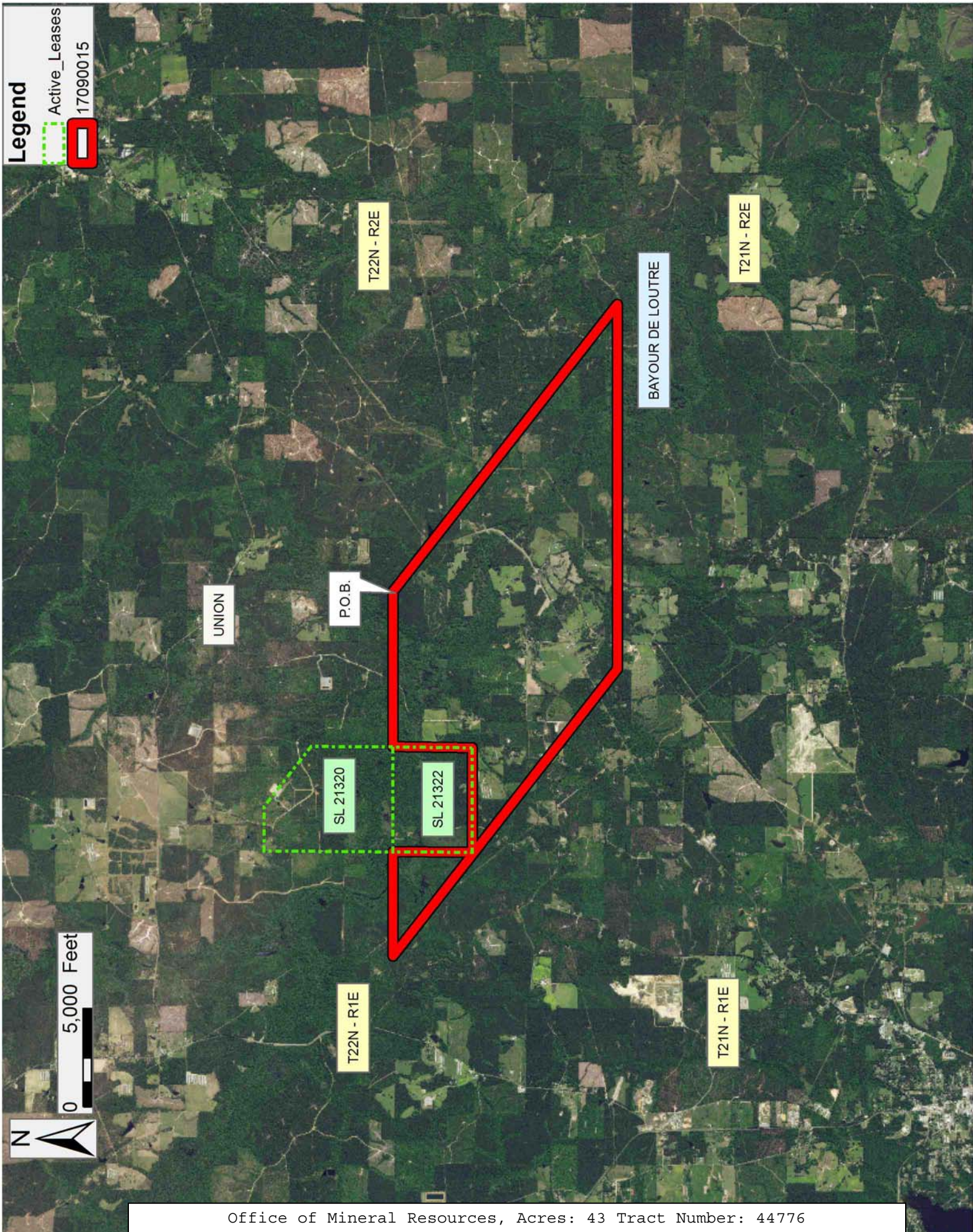
cancellation or abrogation including, but not limited to, bonuses, rentals and royalties.

NOTE: A portion of this tract is located on or adjacent to a Louisiana designated Natural and Scenic River. The applicant must obtain authorization from the Louisiana Department of Wildlife and Fisheries, Scenic Rivers Program prior to initiating any activities within or adjacent to the river, including, but not limited to, crossings by roads and pipelines, well sites, production facilities and water withdrawals.

Applicant: DUDLEY LAND COMPANY

Bidder	Cash Payment	Price/ Acre	Rental	Oil	Gas	Other







**TRACT 44777 - De Soto Parish, Louisiana**

All of the lands now or formerly constituting the beds and bottoms of all water bodies of every nature and description the title of which vests in the State of Louisiana, together with all islands arising therein and other lands formed by accretion or by reliction, where allowed by law, excepting tax adjudicated lands, and not presently under mineral lease on September 13, 2017, situated in De Soto Parish, Louisiana, and more particularly described as follows: Beginning at a point on the boundary of State Lease No. 19841, as amended having Coordinates X = 1,548,980.00 and Y = 458,023.35; thence along the boundaries of said State Lease No. 19841 the following courses: South 89 degrees 14 minutes 28 seconds East 5,612.49 feet to a point having Coordinates of X = 1,554,592.00 and Y = 457,949.00 and South 00 degrees 57 minutes 22 seconds West 5,314.50 feet to a point having Coordinates of X = 1,554,503.32 and Y = 452,635.24; thence North 89 degrees 59 minutes 03 seconds West 6,031.72 feet to a point having Coordinates of X = 1,548,471.60 and Y = 452,636.90; thence North 00 degrees 05 minutes 22 seconds East 5,386.45 feet to a point having Coordinates of X = 1,548,480.00 and Y = 458,023.35; thence East 500.00 feet to the point of beginning, **LESS AND EXCEPT** any portion of State Lease No. 376 that may lie within the above described tract, containing approximately **18 acres, LESS AND EXCEPT** that portion thereof, if any, located West of the boundary line between the States of Texas and Louisiana as determined by the report of the Special Master and adjudicated by the Supreme Court of the United States in litigation styled **Texas v. Louisiana, et al No. 36 Original**, or as otherwise approved by said court, all as more particularly outlined on a plat on file in the Office of Mineral Resources, Department of Natural Resources. All bearings, distances and coordinates are based on Louisiana Coordinate System of 1927, (North or South Zone), where applicable.

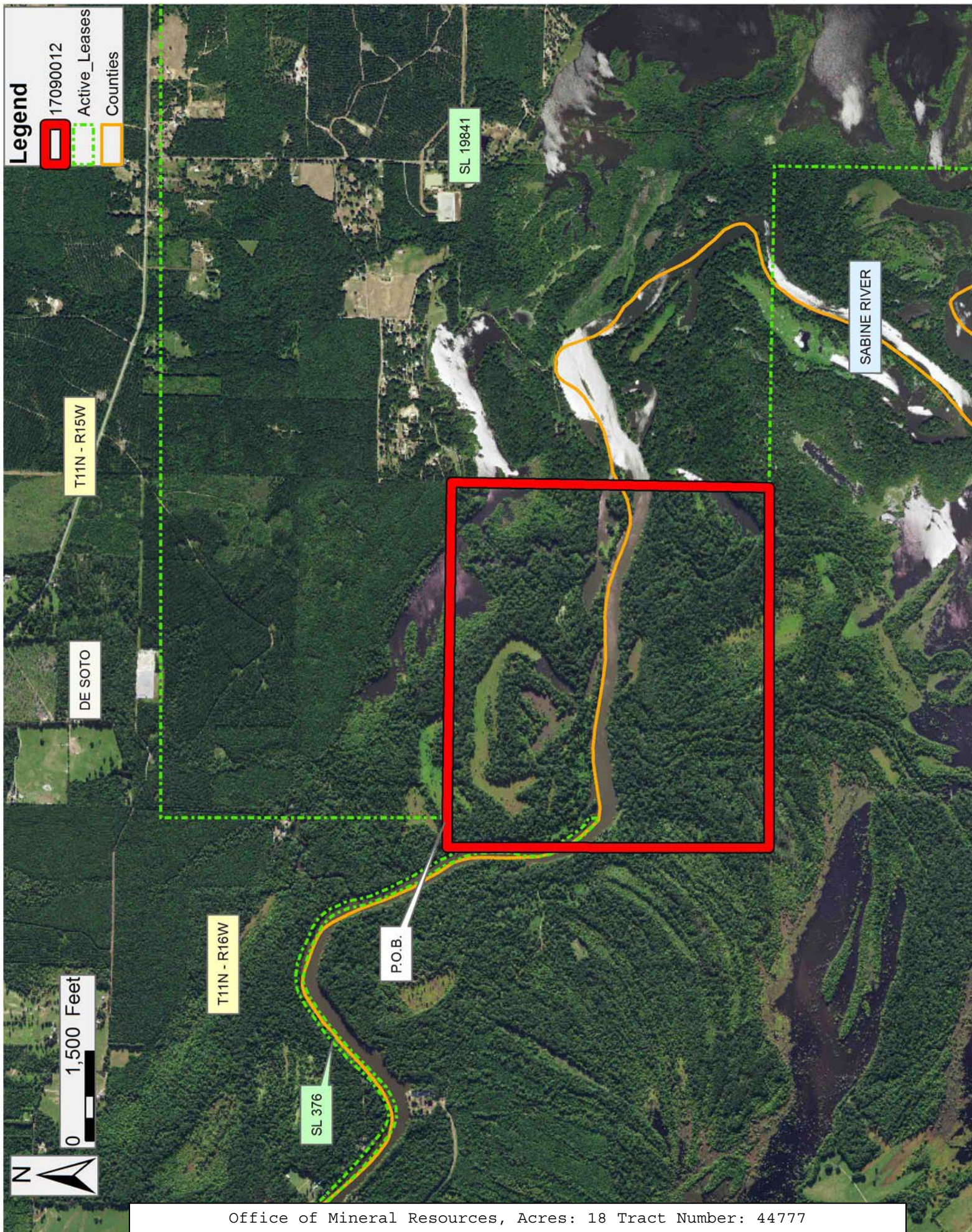
NOTE: The above description of the Tract nominated for the purpose of acquiring a mineral lease or a geophysical agreement has been provided and corrected, where required, exclusively by the nominating party. Any mineral lease or geophysical agreement selected from this Tract and awarded by the Louisiana State Mineral and Energy Board shall be without warranty of any kind, either express, implied or statutory including, but not limited to, title or the implied warranties of merchantability and fitness for a particular purpose.

An error or omission in the nominating party's Tract description may require that a State mineral lease or geophysical agreement be modified, canceled or abrogated due to the existence of conflicting leases, operating agreements, private claims or other future obligations or conditions within the Tract described. In such case, however, the Louisiana State Mineral and Energy Board shall not be obligated to refund any consideration paid by the Lessee prior to such modification, cancellation or abrogation including, but not limited to, bonuses, rentals and royalties.

Applicant: CYPRESS ENERGY CORPORATION

Bidder	Cash Payment	Price/ Acre	Rental	Oil	Gas	Other







**TRACT 44778 - De Soto Parish, Louisiana**

All of the lands now or formerly constituting the beds and bottoms of all water bodies of every nature and description the title of which vests in the State of Louisiana, together with all islands arising therein and other lands formed by accretion or by reliction, where allowed by law, excepting tax adjudicated lands, and not presently under mineral lease on September 13, 2017, situated in De Soto Parish, Louisiana, and more particularly described as follows: Beginning at a point on the boundary of State Lease No. 19841, as amended having Coordinates X = 1,559,889.00 and Y = 452,547.00; thence South 00 degrees 45 minutes 00 seconds West 7,567.65 feet along the boundary of said State Lease No. 19841 to a point having Coordinates of X = 1,559,789.96 and Y = 444,980.00; thence West 5,286.64 feet to a point having Coordinates of X = 1,554,503.32 and Y = 444,980.00; thence North 7,655.24 feet to a point on said boundary of State Lease No. 19841 having Coordinates of X = 1,554,503.32 and Y = 452,635.24; thence South 89 degrees 03 minutes 41 seconds East 5,386.40 feet to the point of beginning, (This tract includes only waterbottoms claimed and owned by the state and specifically excludes any land which the state may claim or own and to which the mineral rights are vested in the state), containing approximately **49 acres, LESS AND EXCEPT** that portion thereof, if any, located West of the boundary line between the States of Texas and Louisiana as determined by the report of the Special Master and adjudicated by the Supreme Court of the United States in litigation styled **Texas v. Louisiana, et al No. 36 Original**, or as otherwise approved by said court, all as more particularly outlined on a plat on file in the Office of Mineral Resources, Department of Natural Resources. All bearings, distances and coordinates are based on Louisiana Coordinate System of 1927, (North or South Zone), where applicable.

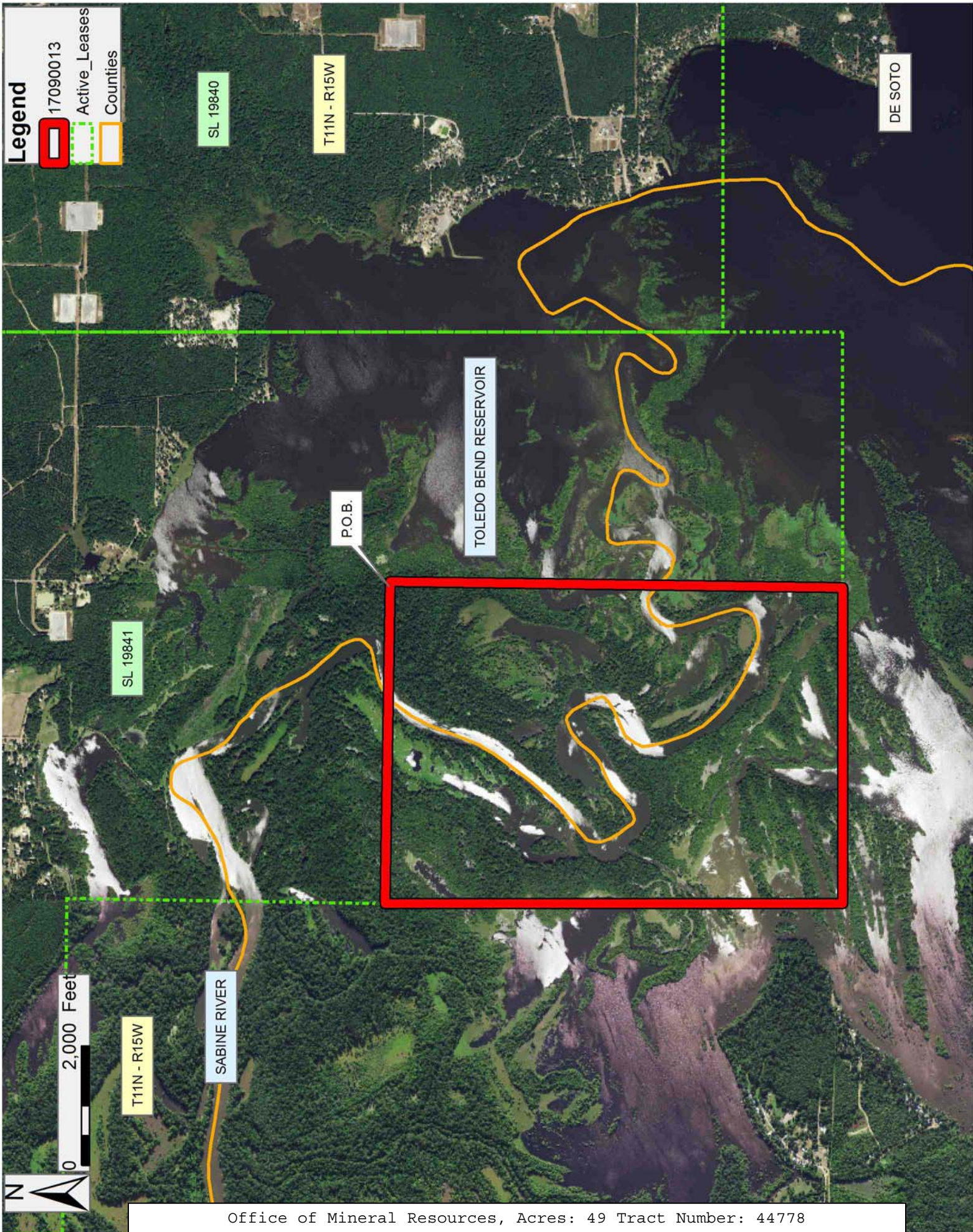
NOTE: The above description of the Tract nominated for the purpose of acquiring a mineral lease or a geophysical agreement has been provided and corrected, where required, exclusively by the nominating party. Any mineral lease or geophysical agreement selected from this Tract and awarded by the Louisiana State Mineral and Energy Board shall be without warranty of any kind, either express, implied or statutory including, but not limited to, title or the implied warranties of merchantability and fitness for a particular purpose.

An error or omission in the nominating party's Tract description may require that a State mineral lease or geophysical agreement be modified, canceled or abrogated due to the existence of conflicting leases, operating agreements, private claims or other future obligations or conditions within the Tract described. In such case, however, the Louisiana State Mineral and Energy Board shall not be obligated to refund any consideration paid by the Lessee prior to such modification, cancellation or abrogation including, but not limited to, bonuses, rentals and royalties.

Applicant: CYPRESS ENERGY CORPORATION

Bidder	Cash Payment	Price/ Acre	Rental	Oil	Gas	Other







**TRACT 44779 - De Soto Parish, Louisiana**

All of the lands now or formerly constituting the beds and bottoms of all water bodies of every nature and description the title of which vests in the State of Louisiana, together with all islands arising therein and other lands formed by accretion or by reliction, where allowed by law, excepting tax adjudicated lands, and not presently under mineral lease on September 13, 2017, situated in De Soto Parish, Louisiana, and more particularly described as follows: Beginning at a point on the boundary of State Lease No. 19841, as amended having Coordinates X = 1,561,178.07 and Y = 444,980.00; thence along the boundaries of said State Lease No. 19841 the following courses: East 2,886.93 feet to a point having Coordinates of X = 1,564,065.00 and Y = 444,980.00 and North 2,000.00 feet to the Southwest corner of State Lease No. 19840 having Coordinates of X = 1,564,065.00 and Y = 446,980.00; thence East 6,254.21 feet along the south boundary of said State Lease No. 19840 to the Northwest corner of State Lease No. 19844, as amended having Coordinates of X = 1,570,319.21 and Y = 446,980.00; thence along the boundaries of said State Lease No. 1944 the following courses: South 00 degrees 13 minutes 39 seconds East 5,295.27 feet to a point having Coordinates of X = 1,570,340.24 and Y = 441,684.77, South 00 degrees 11 minutes 33 seconds East 1,327.19 feet to a point having Coordinates of X = 1,570,344.70 and Y = 440,357.59, South 02 degrees 24 minutes 56 seconds East 1,739.13 feet to a point having Coordinates of X = 1,570,418.00 and Y = 438,620.00 and West 6,353.00 feet to a point having Coordinates of X = 1,564,065.00 and Y = 438,620.00; thence continue West 2,886.93 feet to a point having Coordinates of X = 1,561,178.07 and Y = 438,620.00; thence North 6,360.00 feet to the point of beginning, (This tract includes only waterbottoms claimed and owned by the state and specifically excludes any land which the state may claim or own and to which the mineral rights are vested in the state), containing approximately **43 acres, LESS AND EXCEPT** that portion thereof, if any, located West of the boundary line between the States of Texas and Louisiana as determined by the report of the Special Master and adjudicated by the Supreme Court of the United States in litigation styled **Texas v. Louisiana, et al No. 36 Original**, or as otherwise approved by said court, all as more particularly outlined on a plat on file in the Office of Mineral Resources, Department of Natural Resources. All bearings, distances and coordinates are based on Louisiana Coordinate System of 1927, (North or South Zone), where applicable.

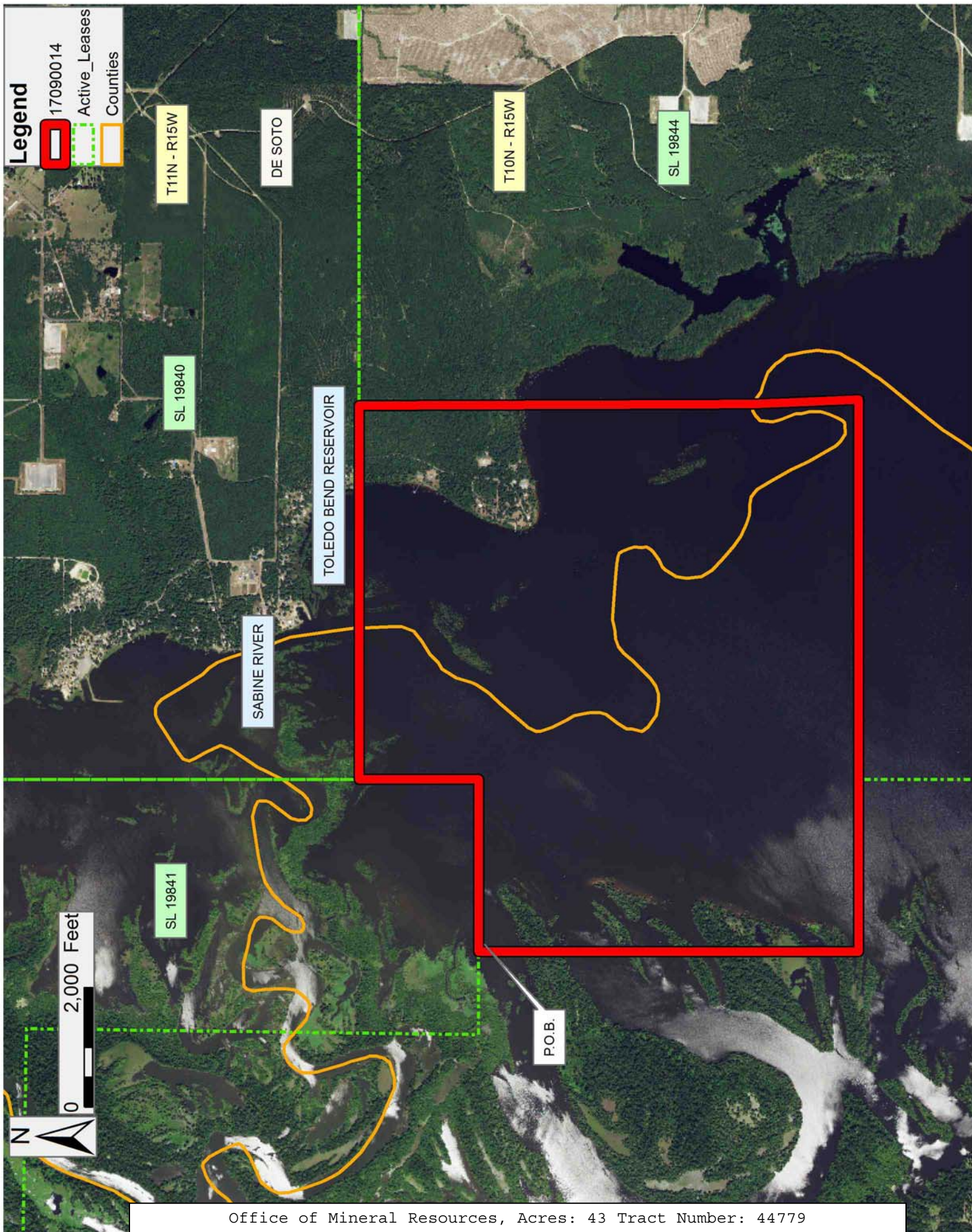
NOTE: The above description of the Tract nominated for the purpose of acquiring a mineral lease or a geophysical agreement has been provided and corrected, where required, exclusively by the nominating party. Any mineral lease or geophysical agreement selected from this Tract and awarded by the Louisiana State Mineral and Energy Board shall be without warranty of any kind, either express, implied or statutory including, but not limited to, title or the implied warranties of merchantability and fitness for a particular purpose.

An error or omission in the nominating party's Tract description may require that a State mineral lease or geophysical agreement be modified, canceled or abrogated due to the existence of conflicting leases, operating agreements, private claims or other future obligations or conditions within the Tract described. In such case, however, the Louisiana State Mineral and Energy Board shall not be obligated to refund any consideration paid by the Lessee prior to such modification, cancellation or abrogation including, but not limited to, bonuses, rentals and royalties.

Applicant: CYPRESS ENERGY CORPORATION

Bidder	Cash Payment	Price/ Acre	Rental	Oil	Gas	Other





**TRACT 44780 - Pointe Coupee Parish, Louisiana**

All of the lands now or formerly constituting the beds and bottoms of all water bodies of every nature and description as to which title is vested in the State of Louisiana, together with all islands arising therein and other lands formed by accretion or by reliction, where allowed by law, excepting tax adjudicated lands, and not presently under mineral lease on September 13, 2017, situated in Pointe Coupee Parish, Louisiana, and more particularly described as follows: Beginning at a point having Coordinates of X = 1,929,797.79 and Y = 686,030.21; thence West 918.53 feet to a point having Coordinates of X = 1,928,879.26 and Y = 686,030.21; thence North 1,963.73 feet to a point having Coordinates of X = 1,928,879.26 and Y = 687,993.94; thence East 918.53 feet to a point having Coordinates of X = 1,929,797.79 and Y = 687,993.94; thence South 1,963.73 feet to the point of beginning, containing approximately **3.5 acres**, all as more particularly outlined on a plat on file in the Office of Mineral Resources, Department of Natural Resources. All bearings, distances and coordinates are based on Louisiana Coordinate System of 1927, (North or South Zone), where applicable.

NOTE: The above description of the Tract nominated for the purpose of acquiring a mineral lease or a geophysical agreement has been provided and corrected, where required, exclusively by the nominating party. Any mineral lease or geophysical agreement selected from this Tract and awarded by the Louisiana State Mineral and Energy Board shall be without warranty of any kind, either express, implied or statutory including, but not limited to, title or the implied warranties of merchantability and fitness for a particular purpose.

An error or omission in the nominating party's Tract description may require that a State mineral lease or geophysical agreement be modified, canceled or abrogated due to the existence of conflicting leases, operating agreements, private claims or other future obligations or conditions within the Tract described. In such case, however, the Louisiana State Mineral and Energy Board shall not be obligated to refund any consideration paid by the Lessee prior to such modification, cancellation or abrogation including, but not limited to, bonuses, rentals and royalties.

Bidder	Cash Payment	Price/Acre	Rental	Oil	Gas	Other

Applicant: CYPRESS ENERGY CORPORATION







**TRACT 44781 - Terrebonne Parish, Louisiana**

All of the lands now or formerly constituting the beds and bottoms of all water bodies of every nature and description as to which title is vested in the State of Louisiana, together with all islands arising therein and other lands formed by accretion or by reliction, where allowed by law, excepting tax adjudicated lands, and not presently under mineral lease on September 13, 2017, situated in Terrebonne Parish, Louisiana, and more particularly described as follows: Beginning at a point having Coordinates of X = 2,186,719.11 and Y = 220,218.81, said point being a Northeast corner of State Lease No. 724, as amended; thence South 00 degrees 16 minutes 35 seconds East 10,251.71 feet along an Eastern boundary of said State Lease No. 724, as amended, to a point having Coordinates of X = 2,186,768.56 and Y = 209,967.22; thence West 12,302.70 feet to a point having Coordinates of X = 2,174,465.86 and Y = 209,967.22; thence North 4,226.39 feet to a point having Coordinates of X = 2,174,465.86 and Y = 214,193.61, said point being on a Northern boundary of said State Lease No. 724, as amended; thence along said northern boundary of said State Lease No. 724, as amended, the following courses: North 00 degrees 59 minutes 02 seconds West 5,966.50 feet to a point having Coordinates of X = 2,174,363.42 and Y = 220,159.23; and North 89 degrees 43 minutes 25 seconds East 12,355.83 feet to the point of beginning, **LESS AND EXCEPT** any portion thereof currently covered and affected by said State Lease No. 724, as amended, and **LESS AND EXCEPT** any acreage in Sections 11 and 12, Township 21 South Range 16 East outlined in the Compromise Agreement between the State Mineral Board of the State of Louisiana and the Terrebonne Land Development Corporation, et. al., containing approximately **49 acres**, all as more particularly outlined on a plat on file in the Office of Mineral Resources, Department of Natural Resources. All bearings, distances and coordinates are based on Louisiana Coordinate System of 1927, (North or South Zone), where applicable.

NOTE: The above description of the Tract nominated for the purpose of acquiring a mineral lease or a geophysical agreement has been provided and corrected, where required, exclusively by the nominating party. Any mineral lease or geophysical agreement selected from this Tract and awarded by the Louisiana State Mineral and Energy Board shall be without warranty of any kind, either express, implied or statutory including, but not limited to, title or the implied warranties of merchantability and fitness for a particular purpose.

An error or omission in the nominating party's Tract description may require that a State mineral lease or geophysical agreement be modified, canceled or abrogated due to the existence of conflicting leases, operating agreements, private claims or other future obligations or conditions within the Tract described. In such case, however, the Louisiana State Mineral and Energy Board shall not be obligated to refund any consideration paid by the Lessee prior to such modification, cancellation or abrogation including, but not limited to, bonuses, rentals and royalties.

NOTE: The State of Louisiana does hereby reserve, and this lease shall be subject to, the imprescriptible right of surface use in the nature of a servitude in favor of the Department of Natural Resources, including its Offices and Commissions, for the sole purpose of implementing, constructing, servicing and maintaining approved coastal zone management and/or restoration projects. Utilization of any and all rights derived under this lease by the mineral lessee, its agents, successors or assigns, shall not interfere with nor hinder the reasonable surface use by the Department of Natural Resources, its Offices or Commissions, as herein above reserved.

Applicant: ROBERT A. SCHROEDER, INC.

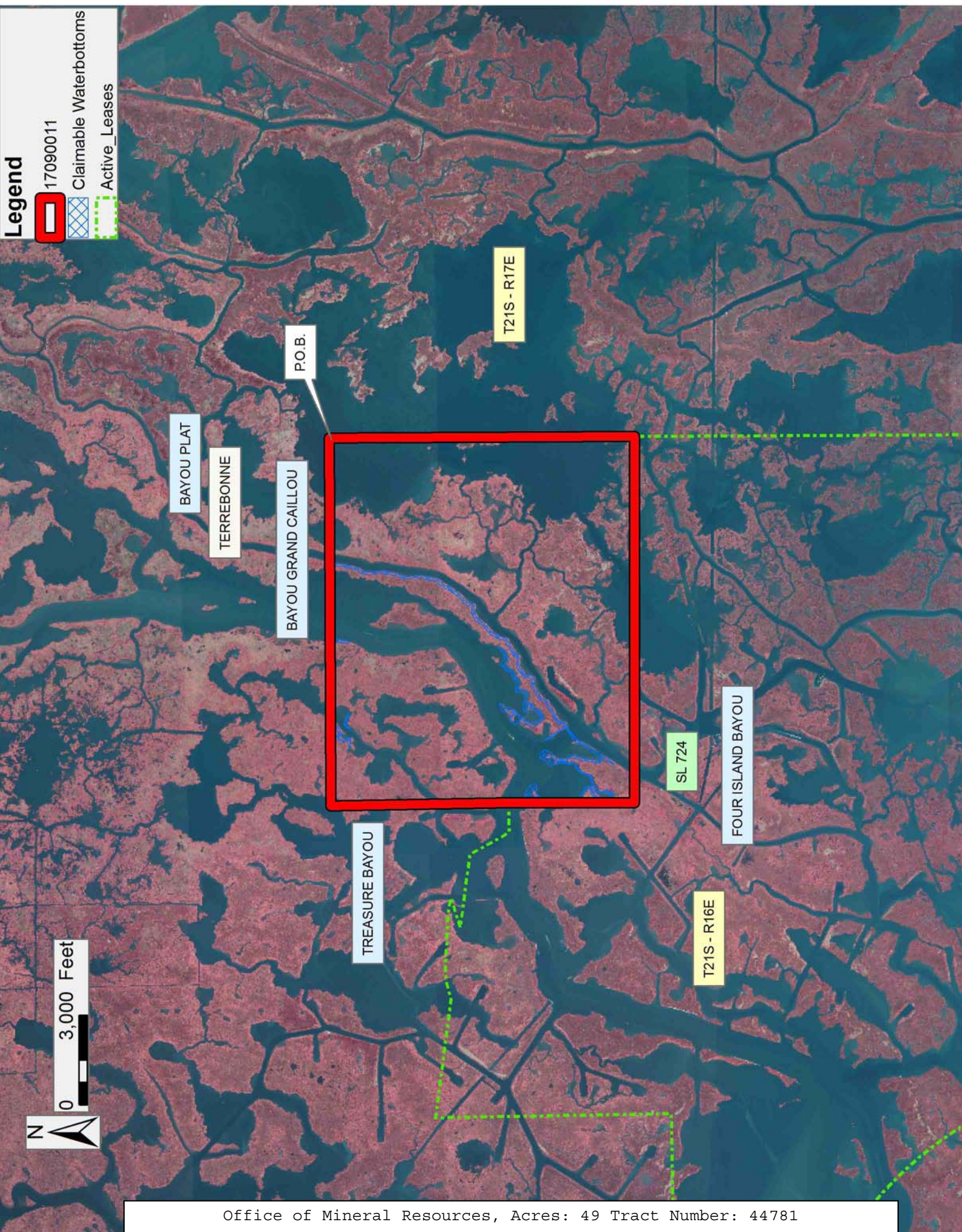
Bidder	Cash Payment	Price/ Acre	Rental	Oil	Gas	Other



Legend

17090011

- Claimable Waterbottoms
- Active\_Leases





**TRACT 44782 - Terrebonne Parish, Louisiana**

All of the lands now or formerly constituting the beds and bottoms of all water bodies of every nature and description as to which title is vested in the State of Louisiana, together with all islands arising therein and other lands formed by accretion or by reliction, where allowed by law, excepting tax adjudicated lands, and not presently under mineral lease on September 13, 2017, situated in Terrebonne Parish, Louisiana, and more particularly described as follows: Beginning at a having Coordinates of X = 2,186,820.83 and Y = 199,132.35, said point being on an Eastern boundary of State Lease No. 724, as amended; thence West 9,320.45 feet to a point having Coordinates of X = 2,177,500.38 and Y = 199,132.35; thence North 10,834.87 feet to a point having Coordinates of X = 2,177,500.38 and Y = 209,967.22; thence East 9,268.18 feet to a point having Coordinates of X = 2,186,768.56 and Y = 209,967.22, said point being on said Eastern boundary of said State Lease No. 724, as amended; thence South 00 degrees 16 minutes 35 seconds East 10,835.00 feet on and along said Eastern boundary of said State Lease No. 724, as amended, to the point of beginning, **LESS AND EXCEPT** any portion thereof currently covered and affected by said State Lease No. 724, as amended, containing approximately **17 acres**, all as more particularly outlined on a plat on file in the Office of Mineral Resources, Department of Natural Resources. All bearings, distances and coordinates are based on Louisiana Coordinate System of 1927, (North or South Zone), where applicable.

NOTE: The above description of the Tract nominated for the purpose of acquiring a mineral lease or a geophysical agreement has been provided and corrected, where required, exclusively by the nominating party. Any mineral lease or geophysical agreement selected from this Tract and awarded by the Louisiana State Mineral and Energy Board shall be without warranty of any kind, either express, implied or statutory including, but not limited to, title or the implied warranties of merchantability and fitness for a particular purpose.

An error or omission in the nominating party's Tract description may require that a State mineral lease or geophysical agreement be modified, canceled or abrogated due to the existence of conflicting leases, operating agreements, private claims or other future obligations or conditions within the Tract described. In such case, however, the Louisiana State Mineral and Energy Board shall not be obligated to refund any consideration paid by the Lessee prior to such modification, cancellation or abrogation including, but not limited to, bonuses, rentals and royalties.

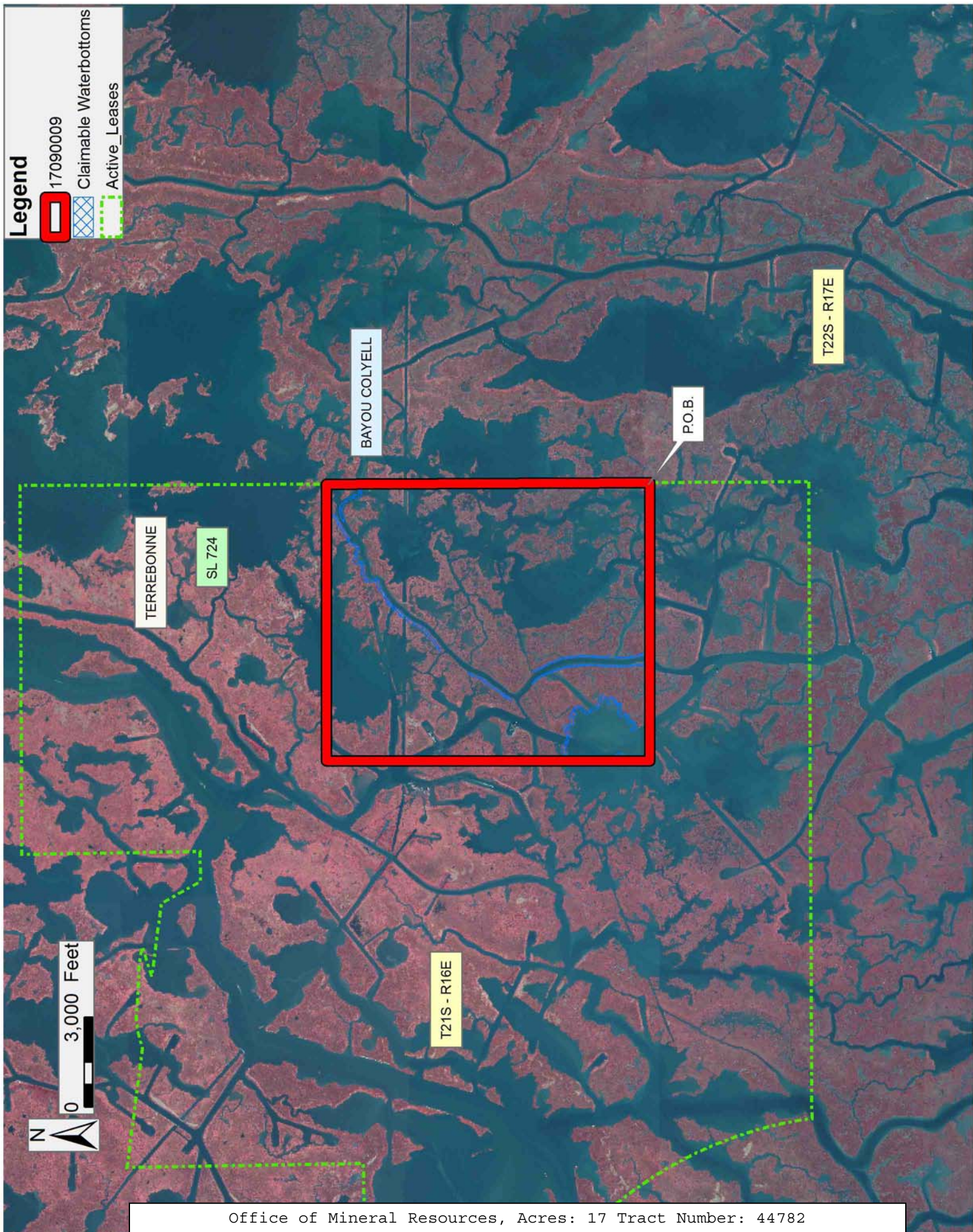
NOTE: The State of Louisiana does hereby reserve, and this lease shall be subject to, the imprescriptible right of surface use in the nature of a servitude in favor of the Department of Natural Resources, including its Offices and Commissions, for the sole purpose of implementing, constructing, servicing and maintaining approved coastal zone management and/or restoration projects. Utilization of any and all rights derived

under this lease by the mineral lessee, its agents, successors or assigns, shall not interfere with nor hinder the reasonable surface use by the Department of Natural Resources, its Offices or Commissions, as herein above reserved.

Applicant: ROBERT A. SCHROEDER, INC.

Bidder	Cash Payment	Price/ Acre	Rental	Oil	Gas	Other





**TRACT 44783 - Terrebonne Parish, Louisiana**

All of the lands now or formerly constituting the beds and bottoms of all water bodies of every nature and description as to which title is vested in the State of Louisiana, together with all islands arising therein and other lands formed by accretion or by reliction, where allowed by law, excepting tax adjudicated lands, and not presently under mineral lease on September 13, 2017, situated in Terrebonne Parish, Louisiana, and more particularly described as follows: Beginning at a point having Coordinates of X = 2,177,500.38 and Y = 199,132.35; thence West 9,160.38 feet to a point having Coordinates of X = 2,168,340.00 and Y = 199,132.35; thence North 10,834.87 feet to a point having Coordinates of X = 2,168,340.00 and Y = 209,967.22; thence East 9,160.38 feet to a point having Coordinates of X = 2,177,500.38 and Y = 209,967.22; thence South 10,834.87 feet to the point of beginning, **LESS AND EXCEPT** any portion thereof currently covered and affected by said State Lease No. 724, as amended, containing approximately **83 acres**, all as more particularly outlined on a plat on file in the Office of Mineral Resources, Department of Natural Resources. All bearings, distances and coordinates are based on Louisiana Coordinate System of 1927, (North or South Zone), where applicable.

NOTE: The above description of the Tract nominated for the purpose of acquiring a mineral lease or a geophysical agreement has been provided and corrected, where required, exclusively by the nominating party. Any mineral lease or geophysical agreement selected from this Tract and awarded by the Louisiana State Mineral and Energy Board shall be without warranty of any kind, either express, implied or statutory including, but not limited to, title or the implied warranties of merchantability and fitness for a particular purpose.

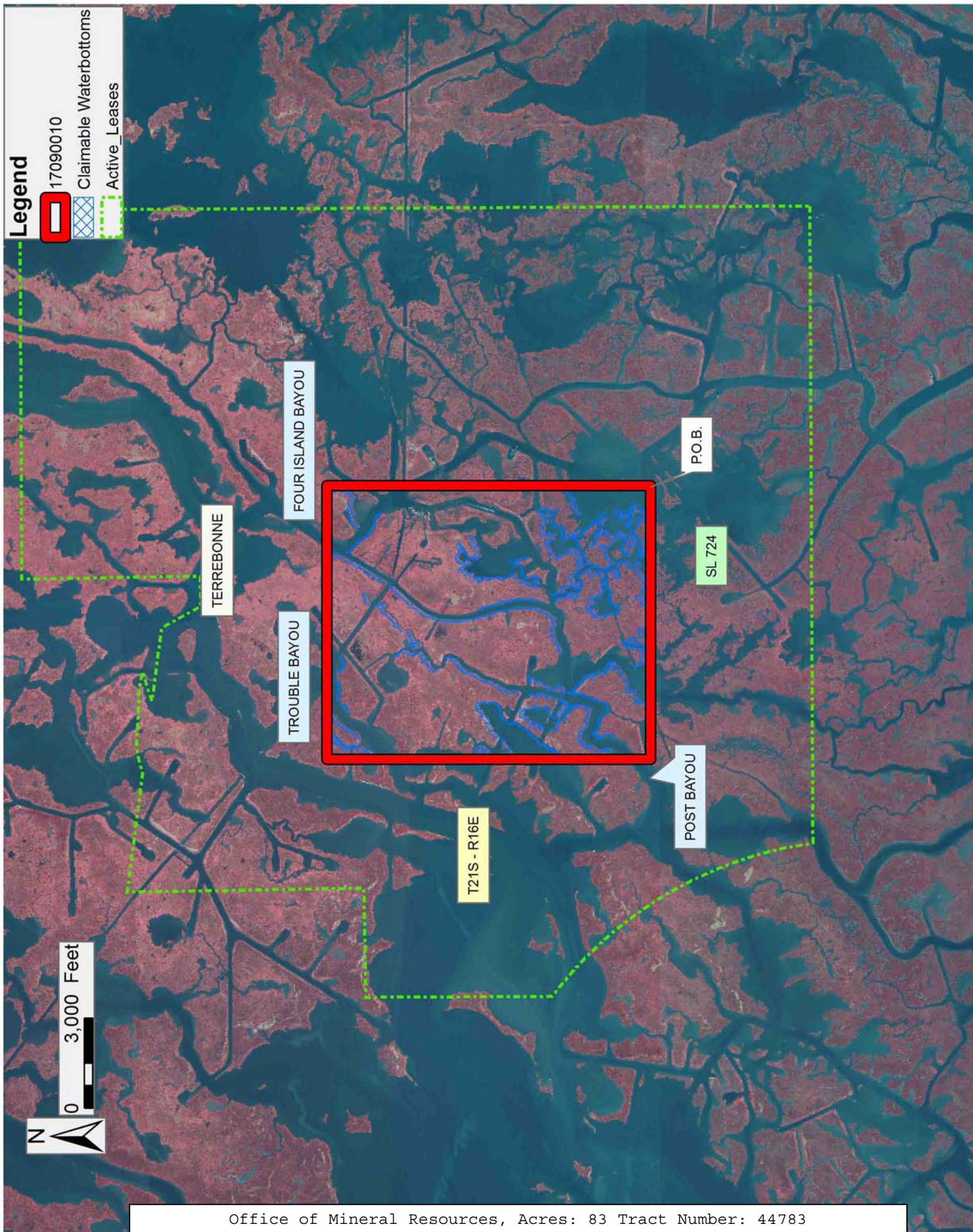
An error or omission in the nominating party's Tract description may require that a State mineral lease or geophysical agreement be modified, canceled or abrogated due to the existence of conflicting leases, operating agreements, private claims or other future obligations or conditions within the Tract described. In such case, however, the Louisiana State Mineral and Energy Board shall not be obligated to refund any consideration paid by the Lessee prior to such modification, cancellation or abrogation including, but not limited to, bonuses, rentals and royalties.

NOTE: The State of Louisiana does hereby reserve, and this lease shall be subject to, the imprescriptible right of surface use in the nature of a servitude in favor of the Department of Natural Resources, including its Offices and Commissions, for the sole purpose of implementing, constructing, servicing and maintaining approved coastal zone management and/or restoration projects. Utilization of any and all rights derived under this lease by the mineral lessee, its agents, successors or assigns, shall not interfere with nor hinder the reasonable surface use by the Department of Natural Resources, its Offices or Commissions, as herein above reserved.

Applicant: ROBERT A. SCHROEDER, INC.

Bidder	Cash Payment	Price/ Acre	Rental	Oil	Gas	Other





**TRACT 44784 - Terrebonne Parish, Louisiana**

All of the lands now or formerly constituting the beds and bottoms of all water bodies of every nature and description as to which title is vested in the State of Louisiana, together with all islands arising therein and other lands formed by accretion or by reliction, where allowed by law, excepting tax adjudicated lands, and not presently under mineral lease on September 13, 2017, situated in Terrebonne Parish, Louisiana, and more particularly described as follows: Beginning at a point on the Southern boundary of State Lease No. 199, as amended, also being the Northeast corner of State Lease No. 21680, having Coordinates of X = 2,272,335.56 and Y = 186,995.30; thence along the boundary of said State Lease No. 199 the following courses and distances: North 89 degrees 34 minutes 50 seconds East 1,240.85 feet to a point having Coordinates of X = 2,273,576.38 and Y = 187,004.38, North 06 degrees 12 minutes 15 seconds West 1,392.69 feet to a point having Coordinates of X = 2,273,425.87 and Y = 188,388.91, North 11 degrees 26 minutes 05 seconds West 488.46 feet to a point having Coordinates of X = 2,273,329.03 and Y = 188,867.68, North 89 degrees 34 minutes 50 seconds East 1,285.28 feet to a point having Coordinates of X = 2,274,614.27 and Y = 188,877.09, South 00 degrees 25 minutes 10 seconds East 1,865.06 feet to a point having Coordinates of X = 2,274,627.93 and Y = 187,012.08, North 89 degrees 34 minutes 50 seconds East 6,683.19 feet to a point having Coordinates of X = 2,281,310.94 and Y = 187,061.00, North 00 degrees 25 minutes 10 seconds West 2,955.66 feet to a point having Coordinates of X = 2,281,289.30 and Y = 190,016.58, South 89 degrees 34 minutes 50 seconds West 2,600.00 feet to a point having Coordinates of X = 2,278,689.37 and Y = 189,997.55, North 00 degrees 25 minutes 10 seconds West 600.00 feet to a point having Coordinates of X = 2,278,684.98 and Y = 190,597.53, South 89 degrees 34 minutes 50 seconds West 1,023.22 feet to a point having Coordinates of X = 2,277,661.79 and Y = 190,590.04, North 00 degrees 25 minutes 10 seconds West 1,349.34 feet to a point having Coordinates of X = 2,277,651.91 and Y = 191,939.35, North 89 degrees 34 minutes 50 seconds East 2,220.03 feet to a point having Coordinates of X = 2,279,871.88 and Y = 191,955.60, North 00 degrees 25 minutes 10 seconds West 2,140.16 feet to a point having Coordinates of X = 2,279,856.21 and Y = 194,095.70, North 89 degrees 34 minutes 50 seconds East 453.49 feet to a point having Coordinates of X = 2,280,309.69 and Y = 194,099.02, South 00 degrees 25 minutes 10 seconds East 1,111.20 feet to a point having Coordinates of X = 2,280,317.82 and Y = 192,987.85, and North 89 degrees 34 minutes 50 seconds East 4,000.00 feet to a point having Coordinates of X = 2,284,317.72 and Y = 193,017.13; thence South approximately 8,466 feet to a point on the boundary of Special Section 16, Township 22 South, Range 20 East, having a Coordinate of X = 2,284,317.72; thence along the boundary of said Special Section 16 the following: Westerly approximately 4,259 feet and Southerly approximately 1,543 feet to a point having a Coordinate of Y = 183,008.13; thence Westerly approximately 7,480 feet to a point having Coordinates of X = 2,272,578.77 and Y = 183,008.13; thence North 2,466.49 feet to the Southeast corner of said State Lease No. 21680, having Coordinates of X = 2,272,578.77 and Y = 185,474.62; thence along the boundary of said State Lease No. 21680 the



following courses and distances: North 09 degrees 05 minutes 15 seconds West 1,468.97 feet to a point having Coordinates of X = 2,272,346.76 and Y = 186,925.15, and North 09 degrees 04 minutes 08 seconds West 71.03 feet to the point of beginning, **LESS AND EXCEPT** any right, title, and interest in lands owned by and not under lease from the State of Louisiana, Special Section 16, situated in Section 16, Township 22 South, Range 20 East, Terrebonne Parish, Louisiana, containing approximately **1,595 acres**, all as more particularly outlined on a plat on file in the Office of Mineral Resources, Department of Natural Resources. All bearings, distances and coordinates are based on Louisiana Coordinate System of 1927, (North or South Zone), where applicable.

NOTE: The above description of the Tract nominated for the purpose of acquiring a mineral lease or a geophysical agreement has been provided and corrected, where required, exclusively by the nominating party. Any mineral lease or geophysical agreement selected from this Tract and awarded by the Louisiana State Mineral and Energy Board shall be without warranty of any kind, either express, implied or statutory including, but not limited to, title or the implied warranties of merchantability and fitness for a particular purpose.

An error or omission in the nominating party's Tract description may require that a State mineral lease or geophysical agreement be modified, canceled or abrogated due to the existence of conflicting leases, operating agreements, private claims or other future obligations or conditions within the Tract described. In such case, however, the Louisiana State Mineral and Energy Board shall not be obligated to refund any consideration paid by the Lessee prior to such modification, cancellation or abrogation including, but not limited to, bonuses, rentals and royalties.

NOTE: The State of Louisiana does hereby reserve, and this lease shall be subject to, the imprescriptible right of surface use in the nature of a servitude in favor of the Department of Natural Resources, including its Offices and Commissions, for the sole purpose of implementing, constructing, servicing and maintaining approved coastal zone management and/or restoration projects. Utilization of any and all rights derived under this lease by the mineral lessee, its agents, successors or assigns, shall not interfere with nor hinder the reasonable surface use by the Department of Natural Resources, its Offices or Commissions, as herein above reserved.



Applicant: THEOPHILUS OIL, GAS & LAND SERVICES, LLC

Bidder	Cash Payment	Price/ Acre	Rental	Oil	Gas	Other

**Legend**

 17090006

 Active\_Leases

