

TRACT 44361 - De Soto Parish, Louisiana

All of the lands now or formerly constituting the beds and bottoms of all water bodies of every nature and description as to which title is vested in the State of Louisiana, together with all islands arising therein and other lands formed by accretion or by reliction, where allowed by law, excepting tax adjudicated lands, and not presently under mineral lease on September 9, 2015, situated in De Soto Parish, Louisiana, and more particularly described as follows: Beginning at a point being the Northeast corner of State Lease No. 21221 having Coordinates of X = 1,619,838.73 and Y = 605,406.30, said point also being on the Southern boundary of State Lease No. 20356, as amended; thence along the Southern boundary of said State Lease No. 20356, as amended, the following: South 88 degrees 57 minutes 00 seconds East 391.85 feet to a point having Coordinates of X = 1,620,230.51 and Y = 605,399.12, and South 00 degrees 41 minutes 35 seconds West 22.32 feet to a point having Coordinates of X = 1,620,230.24 and Y = 605,376.80; thence South 00 degrees 41 minutes 36 seconds West 5,168.36 feet to a point on the Northern boundary of State Lease No. 18371, as amended, having Coordinates of X = 1,620,167.70 and Y = 600,208.82; thence North 86 degrees 42 minutes 27 seconds West 370.00 feet along the boundary of said State Lease No. 18371, as amended, to a point being the Southeast corner of said State Lease No. 21221 having Coordinates of X 1,619,798.31 and Y = 600,230.07; thence North 00 degrees 26 minutes 51 seconds East 5,176.39 feet to the point of beginning, containing approximately **19.292 acres**, all as more particularly outlined on a plat on file in the Office of Mineral Resources, Department of Natural Resources. All bearings, distances and coordinates are based on Louisiana Coordinate System of 1927, (North or South Zone), where applicable.

NOTE: The above description of the Tract nominated for the purpose of acquiring a mineral lease or a geophysical agreement has been provided and corrected, where required, exclusively by the nominating party. Any mineral lease or geophysical agreement selected from this Tract and awarded by the Louisiana State Mineral and Energy Board shall be without warranty of any kind, either express, implied or statutory including, but not limited to, title or the implied warranties of merchantability and fitness for a particular purpose.

An error or omission in the nominating party's Tract description may require that a State mineral lease or geophysical agreement be modified, canceled or abrogated due to the existence of conflicting leases, operating agreements, private claims or other future obligations or conditions within the Tract described. In such case, however, the Louisiana State Mineral and Energy Board shall not be obligated to refund any consideration paid by the Lessee prior to such modification, cancellation or abrogation including, but not limited to, bonuses, rentals and royalties.

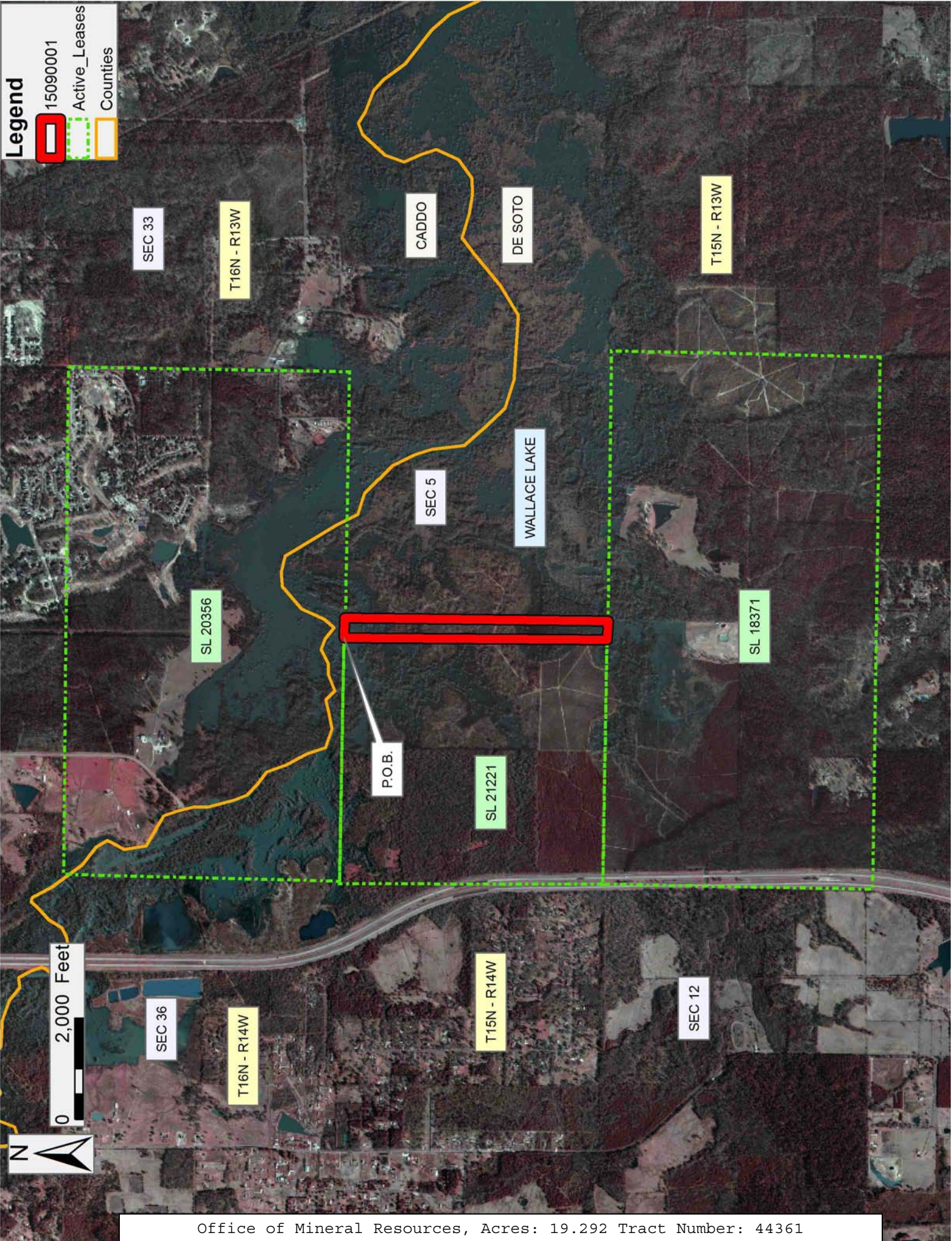
NOTE: The Office of Mineral Resources will require a minimum bonus of \$700 per acre and a minimum royalty of 25%.

Applicant: STAFF OFFICE OF MINERAL RESOURCES

Bidder	Cash Payment	Price/Acre	Rental	Oil	Gas	Other

Legend

- 15090001
- Active_Leases
- Counties



TRACT 44362 - Allen Parish, Louisiana

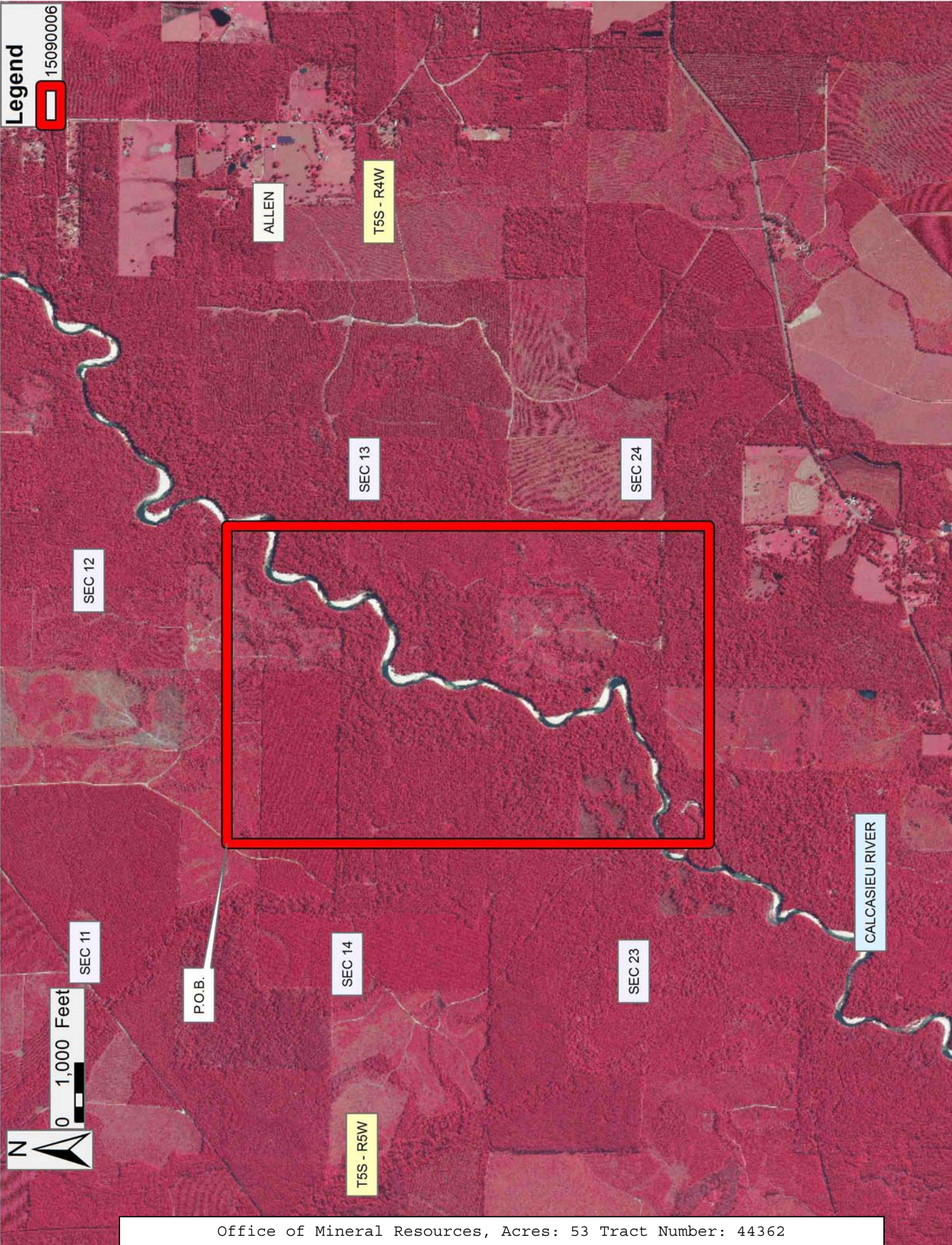
All of the lands now or formerly constituting the beds and bottoms of all water bodies of every nature and description as to which title is vested in the State of Louisiana, together with all islands arising therein and other lands formed by accretion or by reliction, where allowed by law, excepting tax adjudicated lands, and not presently under mineral lease on September 9, 2015, situated in Allen Parish, Louisiana, and more particularly described as follows: Beginning at a point having Coordinates of X = 1,524,190.00 and Y = 714,910.00; thence East 5,400.00 feet to a point having Coordinates of X = 1,529,590.00 and Y = 714,910.00; thence South 8,200.00 feet to a point having Coordinates of X = 1,529,590.00 and Y = 706,710.00; thence West 5,400.00 feet to a point having Coordinates of X = 1,524,190.00 and Y = 706,710.00; thence North 8,200.00 feet to the point of beginning, containing approximately **53 acres**, all as more particularly outlined on a plat on file in the Office of Mineral Resources, Department of Natural Resources. All bearings, distances and coordinates are based on Louisiana Coordinate System of 1927, (North or South Zone), where applicable.

NOTE: The above description of the Tract nominated for the purpose of acquiring a mineral lease or a geophysical agreement has been provided and corrected, where required, exclusively by the nominating party. Any mineral lease or geophysical agreement selected from this Tract and awarded by the Louisiana State Mineral and Energy Board shall be without warranty of any kind, either express, implied or statutory including, but not limited to, title or the implied warranties of merchantability and fitness for a particular purpose.

An error or omission in the nominating party's Tract description may require that a State mineral lease or geophysical agreement be modified, canceled or abrogated due to the existence of conflicting leases, operating agreements, private claims or other future obligations or conditions within the Tract described. In such case, however, the Louisiana State Mineral and Energy Board shall not be obligated to refund any consideration paid by the Lessee prior to such modification, cancellation or abrogation including, but not limited to, bonuses, rentals and royalties.

Bidder	Cash Payment	Price/Acre	Rental	Oil	Gas	Other

Applicant: THEOPHILUS OIL, GAS & LAND SERVICES, LLC



TRACT 44363 - Cameron Parish, Louisiana

All of the lands now or formerly constituting the beds and bottoms of all water bodies of every nature and description as to which title is vested in the State of Louisiana, together with all islands arising therein and other lands formed by accretion or by reliction, where allowed by law, excepting tax adjudicated lands, and not presently under mineral lease on September 9, 2015, situated in Cameron Parish, Louisiana, and more particularly described as follows: Beginning at the most Northerly Northwest corner of State Lease No. 21279, having Coordinates of X = 1,230,512.21 and Y = 483,278.00; thence along the boundary of said State Lease No. 21279 the following courses and distances: South 34 degrees 17 minutes 13 seconds West 2,662.71 feet to a point having Coordinates of X = 1,229,012.21 and Y = 481,078.00 and South 2,000.00 feet to the Northwest corner of State Lease No. 21422 having Coordinates of X = 1,229,012.21 and Y = 479,078.00; thence along boundary of said State Lease No. 21422 the following courses and distances: South 3,228.00 feet to its Southwest corner, having Coordinates of X = 1,229,012.21 and Y = 475,850.00 and East 1,500.00 feet to its Southeast corner, also being a point on the boundary of said State Lease No. 21279, having Coordinates of X = 1,230,512.21 and Y = 475,850.00; thence East 3,000.00 feet along the Southern boundary of said State Lease No. 21279 to its Southeast corner, having Coordinates of X = 1,233,512.21 and Y = 475,850.00; thence South 7,193.20 feet to a point having Coordinates of X = 1,233,512.21 and Y = 468,656.80; thence West 6,500.00 feet to a point having Coordinates of X = 1,227,012.21 and Y = 468,656.80; thence North 14,621.20 feet to a point having Coordinates of X = 1,227,012.21 and Y = 483,278.00; thence East 3,500.00 feet to the point of beginning, containing approximately **1,130 acres**, all as more particularly outlined on a plat on file in the Office of Mineral Resources, Department of Natural Resources. All bearings, distances and coordinates are based on Louisiana Coordinate System of 1927, (North or South Zone), where applicable.

NOTE: The above description of the Tract nominated for the purpose of acquiring a mineral lease or a geophysical agreement has been provided and corrected, where required, exclusively by the nominating party. Any mineral lease or geophysical agreement selected from this Tract and awarded by the Louisiana State Mineral and Energy Board shall be without warranty of any kind, either express, implied or statutory including, but not limited to, title or the implied warranties of merchantability and fitness for a particular purpose.

An error or omission in the nominating party's Tract description may require that a State mineral lease or geophysical agreement be modified, canceled or abrogated due to the existence of conflicting leases, operating agreements, private claims or other future obligations or conditions within the Tract described. In such case, however, the Louisiana State Mineral and Energy Board shall not be obligated to refund any consideration paid by the Lessee prior to such modification,

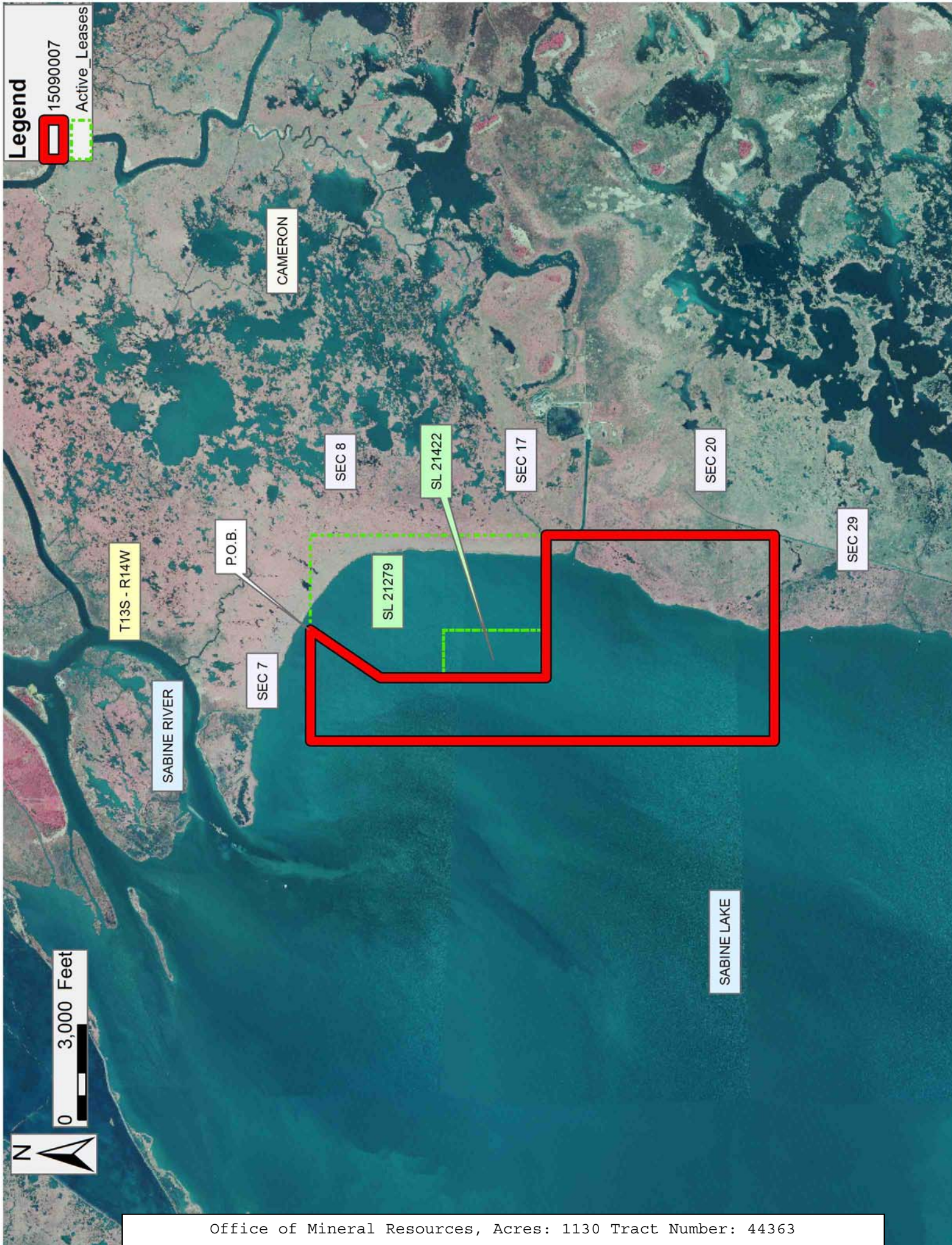
cancellation or abrogation including, but not limited to, bonuses, rentals and royalties.

NOTE: The State of Louisiana does hereby reserve, and this lease shall be subject to, the imprescriptible right of surface use in the nature of a servitude in favor of the Department of Natural Resources, including its Offices and Commissions, for the sole purpose of implementing, constructing, servicing and maintaining approved coastal zone management and/or restoration projects. Utilization of any and all rights derived under this lease by the mineral lessee, its agents, successors or assigns, shall not interfere with nor hinder the reasonable surface use by the Department of Natural Resources, its Offices or Commissions, as herein above reserved.

NOTE: This tract is located in an area designated by the Louisiana Legislature or the Wildlife and Fisheries Commission as a Public Oyster Seed Ground, Reservation, or area of Calcasieu or Sabine Lake. Proposed projects occurring in these areas will be evaluated on a case by case basis by Louisiana Department of Wildlife & Fisheries. Modifications to proposed project features including, but not limited to, access routes, well sites, flowlines, and appurtenant structures maybe required by the Louisiana Department of Wildlife and Fisheries. In addition, compensatory mitigation will be required to offset unavoidable habitat impacts.

Applicant: THEOPHILUS OIL, GAS & LAND SERVICES, LLC

Bidder	Cash Payment	Price/Acre	Rental	Oil	Gas	Other



Legend

15090007
Active_Leases

CAMERON

SEC 8

SL 21422

SEC 17

SEC 20

SEC 29

T13S - R14W

P.O.B.

SL 21279

SEC 7

SABINE RIVER

SABINE LAKE

0 3,000 Feet



TRACT 44364 - Terrebonne Parish, Louisiana

All of the lands now or formerly constituting the beds and bottoms of all water bodies of every nature and description as to which title is vested in the State of Louisiana, together with all islands arising therein and other lands formed by accretion or by reliction, where allowed by law, excepting tax adjudicated lands, and not presently under mineral lease on September 9, 2015, situated in Terrebonne Parish, Louisiana, and more particularly described as follows: Beginning at a point having Coordinates of X = 2,032,144.03 and Y = 255,194.30; thence East 7,530.43 feet to a point having Coordinates of X = 2,039,674.46 and Y = 255,194.30; thence South 18,480.00 feet to a point having Coordinates of X = 2,039,674.46 and Y = 236,714.30; thence West 7,530.43 feet to a point having Coordinates of X = 2,032,144.03 and Y = 236,714.30 thence 18,480.00 feet to the point of beginning, **LESS AND EXCEPT** any right, title, and interest in lands owned by and not under lease from the State of Louisiana, on behalf of the Terrebonne Parish School Board, situated in Section 16, Township 20 South, Range 12 East, Terrebonne Parish, Louisiana, contained within the above described tract, containing approximately **2,495 acres**, all as more particularly outlined on a plat on file in the Office of Mineral Resources, Department of Natural Resources. All bearings, distances and coordinates are based on Louisiana Coordinate System of 1927, (North or South Zone), where applicable.

NOTE: The above description of the Tract nominated for the purpose of acquiring a mineral lease or a geophysical agreement has been provided and corrected, where required, exclusively by the nominating party. Any mineral lease or geophysical agreement selected from this Tract and awarded by the Louisiana State Mineral and Energy Board shall be without warranty of any kind, either express, implied or statutory including, but not limited to, title or the implied warranties of merchantability and fitness for a particular purpose.

An error or omission in the nominating party's Tract description may require that a State mineral lease or geophysical agreement be modified, canceled or abrogated due to the existence of conflicting leases, operating agreements, private claims or other future obligations or conditions within the Tract described. In such case, however, the Louisiana State Mineral and Energy Board shall not be obligated to refund any consideration paid by the Lessee prior to such modification, cancellation or abrogation including, but not limited to, bonuses, rentals and royalties.

NOTE: The Office of Mineral Resources will require a minimum bonus of \$300 per acre and a minimum royalty of 25%.

NOTE: The State of Louisiana does hereby reserve, and this lease shall be subject to, the imprescriptible right of surface use in the nature of a servitude in favor of the Department of Natural Resources, including its Offices and Commissions, for the sole purpose of implementing,

constructing, servicing and maintaining approved coastal zone management and/or restoration projects. Utilization of any and all rights derived under this lease by the mineral lessee, its agents, successors or assigns, shall not interfere with nor hinder the reasonable surface use by the Department of Natural Resources, its Offices or Commissions, as herein above reserved.

Applicant: ACADIAN LAND SERVICES, L.L.C.

Bidder	Cash Payment	Price/Acre	Rental	Oil	Gas	Other

Legend

- 15090034
- Wildlife
- Counties



TRACT 44365 - Terrebonne Parish, Louisiana

All of the lands now or formerly constituting the beds and bottoms of all water bodies of every nature and description as to which title is vested in the State of Louisiana, together with all islands arising therein and other lands formed by accretion or by reliction, where allowed by law, excepting tax adjudicated lands, and not presently under mineral lease on September 9, 2015, situated in Terrebonne Parish, Louisiana, and more particularly described as follows: Beginning at a point having Coordinates of X = 2,039,674.46 and Y = 255,194.30 thence East 5,765.19 feet to a point having Coordinates of X = 2,045,439.66 and Y = 255,194.30, thence South 18,480.00 feet to a point having Coordinates of X = 2,045,439.66 and Y = 236,714.30; thence West 5,765.19 feet to a point having Coordinates of X = 2,039,674.46 and Y = 236,714.30 thence North 18,480.00 feet to the point of beginning, containing approximately **2,445.84 acres**, all as more particularly outlined on a plat on file in the Office of Mineral Resources, Department of Natural Resources. All bearings, distances and coordinates are based on Louisiana Coordinate System of 1927, (North or South Zone), where applicable.

NOTE: The above description of the Tract nominated for the purpose of acquiring a mineral lease or a geophysical agreement has been provided and corrected, where required, exclusively by the nominating party. Any mineral lease or geophysical agreement selected from this Tract and awarded by the Louisiana State Mineral and Energy Board shall be without warranty of any kind, either express, implied or statutory including, but not limited to, title or the implied warranties of merchantability and fitness for a particular purpose.

An error or omission in the nominating party's Tract description may require that a State mineral lease or geophysical agreement be modified, canceled or abrogated due to the existence of conflicting leases, operating agreements, private claims or other future obligations or conditions within the Tract described. In such case, however, the Louisiana State Mineral and Energy Board shall not be obligated to refund any consideration paid by the Lessee prior to such modification, cancellation or abrogation including, but not limited to, bonuses, rentals and royalties.

NOTE: The Office of Mineral Resources will require a minimum bonus of \$300 per acre and a minimum royalty of 25%.

NOTE: The State of Louisiana does hereby reserve, and this lease shall be subject to, the imprescriptible right of surface use in the nature of a servitude in favor of the Department of Natural Resources, including its Offices and Commissions, for the sole purpose of implementing, constructing, servicing and maintaining approved coastal zone management and/or restoration projects. Utilization of any and all rights derived under this lease by the mineral lessee, its agents, successors or assigns, shall not interfere with nor hinder the reasonable surface use by the

Department of Natural Resources, its Offices or Commissions, as herein above reserved.

Applicant: ACADIAN LAND SERVICES, L.L.C.

Bidder	Cash Payment	Price/Acre	Rental	Oil	Gas	Other

1509003

T19S - R12E

T20S - R12E

TERREBONNE

ATCHAFALAYA BAY

FOURLEAGUE BAY

SEC 35

SEC 36

SEC 11

SEC 14

SEC 23

P.O.B.

SEC 10

SEC 15

SEC 22

0 3,800 Feet



TRACT 44366 - Terrebonne Parish, Louisiana

All of the lands now or formerly constituting the beds and bottoms of all water bodies of every nature and description as to which title is vested in the State of Louisiana, together with all islands arising therein and other lands formed by accretion or by reliction, where allowed by law, excepting tax adjudicated lands, and not presently under mineral lease on September 9, 2015, situated in Terrebonne Parish, Louisiana, and more particularly described as follows: Beginning at a point having Coordinates of X = 2,045,439.66 and Y = 255,194.30; thence East 16,239.07 feet to a point having Coordinates of X = 2,061,678.72 and Y = 255,194.30; thence South 7,225.53 feet to a point on the Northern boundary of State Lease No. 19290 having Coordinates of X = 2,061,678.72 and Y = 247,968.77; thence West 2,082.86 feet along the Northern boundary of said State Lease No. 19290 to its Northwest corner having Coordinates of X = 2,059,595.86 and Y = 247,968.77; thence South 1,443.58 feet along the Western boundary of said State Lease No. 19290 to its Southwest corner having Coordinates of X = 2,059,595.86 and Y = 246,525.19; thence East 1,144.14 feet to a common point on the boundary of said State Lease No 19290 and the Northwest corner of Operating Agreement No. A0327 having Coordinates of X = 2,060,740.00 and Y = 246,525.19; thence South 00 degrees 07 minutes 04 seconds East 1,505.30 along an Eastern boundary of said Operating Agreement No. 0327 to a point having Coordinates of X = 2,060,743.09 and Y = 245,019.89; thence West 15,303.44 feet to a point having Coordinates of X = 2,045,439.66 and Y = 245,019.89; thence North 10,174.41 feet to the point of beginning, containing approximately **2,496 acres**, all as more particularly outlined on a plat on file in the Office of Mineral Resources, Department of Natural Resources. All bearings, distances and coordinates are based on Louisiana Coordinate System of 1927, (North or South Zone), where applicable.

NOTE: The above description of the Tract nominated for the purpose of acquiring a mineral lease or a geophysical agreement has been provided and corrected, where required, exclusively by the nominating party. Any mineral lease or geophysical agreement selected from this Tract and awarded by the Louisiana State Mineral and Energy Board shall be without warranty of any kind, either express, implied or statutory including, but not limited to, title or the implied warranties of merchantability and fitness for a particular purpose.

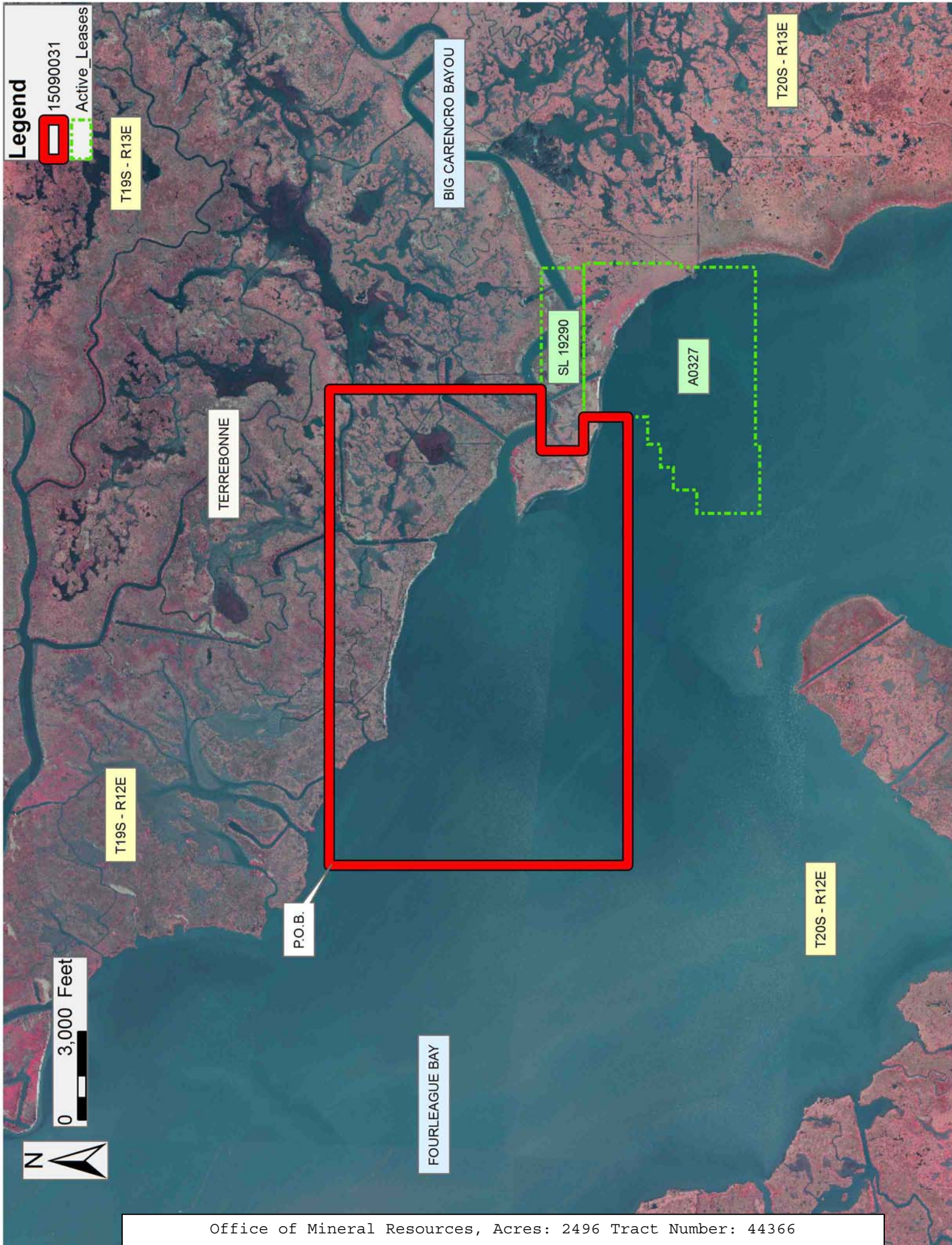
An error or omission in the nominating party's Tract description may require that a State mineral lease or geophysical agreement be modified, canceled or abrogated due to the existence of conflicting leases, operating agreements, private claims or other future obligations or conditions within the Tract described. In such case, however, the Louisiana State Mineral and Energy Board shall not be obligated to refund any consideration paid by the Lessee prior to such modification, cancellation or abrogation including, but not limited to, bonuses, rentals and royalties.

NOTE: The Office of Mineral Resources will require a minimum bonus of \$300 per acre and a minimum royalty of 25%.

NOTE: The State of Louisiana does hereby reserve, and this lease shall be subject to, the imprescriptible right of surface use in the nature of a servitude in favor of the Department of Natural Resources, including its Offices and Commissions, for the sole purpose of implementing, constructing, servicing and maintaining approved coastal zone management and/or restoration projects. Utilization of any and all rights derived under this lease by the mineral lessee, its agents, successors or assigns, shall not interfere with nor hinder the reasonable surface use by the Department of Natural Resources, its Offices or Commissions, as herein above reserved.

Applicant: ACADIAN LAND SERVICES, L.L.C.

Bidder	Cash Payment	Price/Acre	Rental	Oil	Gas	Other



Legend

15090031
Active_Leases

T19S - R13E

T20S - R13E

BIG CARENCRO BAYOU

TERREBONNE

SL 19290

A0327

T19S - R12E

P.O.B.

T20S - R12E

FOURLEAGUE BAY

0 3,000 Feet



TRACT 44367 - Terrebonne Parish, Louisiana

All of the lands now or formerly constituting the beds and bottoms of all water bodies of every nature and description as to which title is vested in the State of Louisiana, together with all islands arising therein and other lands formed by accretion or by reliction, where allowed by law, excepting tax adjudicated lands, and not presently under mineral lease on September 9, 2015, situated in Terrebonne Parish, Louisiana, and more particularly described as follows: Beginning at a point having Coordinates of X = 2,061,678.72 and Y = 255,194.30; thence East 18,480.00 feet to a point having Coordinates of X = 2,080,158.72 and Y = 255,194.30; thence South 18,480.00 feet to a point having Coordinates of X = 2,080,158.72 and Y = 236,714.30; thence West 18,480.00 feet to a point having Coordinates of X = 2,061,678.72 and Y = 236,714.30; thence North 3,952.51 feet to a point on a Southern boundary of Operating Agreement No. A0327 having Coordinates of X = 2,061,678.72 Y = 240,666.81; thence following the boundary of said Operating Agreement the following courses: East 3,257.01 feet to a point having Coordinates of X = 2,064,935.73 and Y = 240,666.81, East 902.73 feet to a point on the Southeast corner of Said Operating Agreement No. 0327 having Coordinates of X = 2,065,838.46 and Y = 240,666.81, North 2,545.82 feet to a point having Coordinates of X = 2,065,838.46 and Y = 243,212.63, North 89 degrees 02 minutes 51 seconds East 143.35 feet to a point having Coordinates of X = 2,065,981.79 and Y = 243,215.01, North 2767.79 feet to a common point on the most Eastern boundary of said Operating Agreement No. 0327 and the Southwest corner of State Lease No. 19978 having Coordinates of X = 2,065,981.79 and Y = 245,982.80; thence North 89 degrees 33 minutes 40 seconds East 560.23 feet along the southern boundary of said State Lease No. 19978 to its Southeast corner having Coordinates of X = 2,066,542.00 and Y = 245,987.09; thence North 1,981.60 feet along the Eastern boundary of said State Lease No. 19978 to its Northeast corner having Coordinates of X = 2,066,542.00 and Y = 247,968.69; thence West 725.00 feet along the Northern boundary of said State Lease No. 19978 to its Northwest corner and a point on the Eastern boundary of State Lease No. 19290 having Coordinates of X = 2,065,817.00 and Y = 247,968.69; thence North 0.08 feet along the Eastern boundary of State Lease No. 19290 to its Northeast corner having Coordinates of X = 2,065,817.00 and Y = 247,968.77; thence West 4,138.28 feet along the Northern boundary of said State Lease No. 19290 to a point having Coordinates of X = 2,061,678.72 and Y = 247,968.77; thence North 7,225.53 feet to the point of beginning, **LESS AND EXCEPT** all that portion of Operating Agreement 0357 which lies entirely within the above described tract, and **LESS AND EXCEPT** any right, title, and interest in lands owned by and not under lease from the State of Louisiana, on behalf of the Terrebonne Parish School Board, situated in Section 16, Township 20 South, Range 13 East, Terrebonne Parish, Louisiana, contained within the above described tract, containing approximately **1,344 acres**, all as more particularly outlined on a plat on file in the Office of Mineral Resources, Department of Natural Resources. All bearings, distances and coordinates are based on Louisiana Coordinate System of 1927, (North or South Zone), where applicable.

NOTE: The above description of the Tract nominated for the purpose of acquiring a mineral lease or a geophysical agreement has been provided and corrected, where required, exclusively by the nominating party. Any mineral lease or geophysical agreement selected from this Tract and awarded by the Louisiana State Mineral and Energy Board shall be without warranty of any kind, either express, implied or statutory including, but not limited to, title or the implied warranties of merchantability and fitness for a particular purpose.

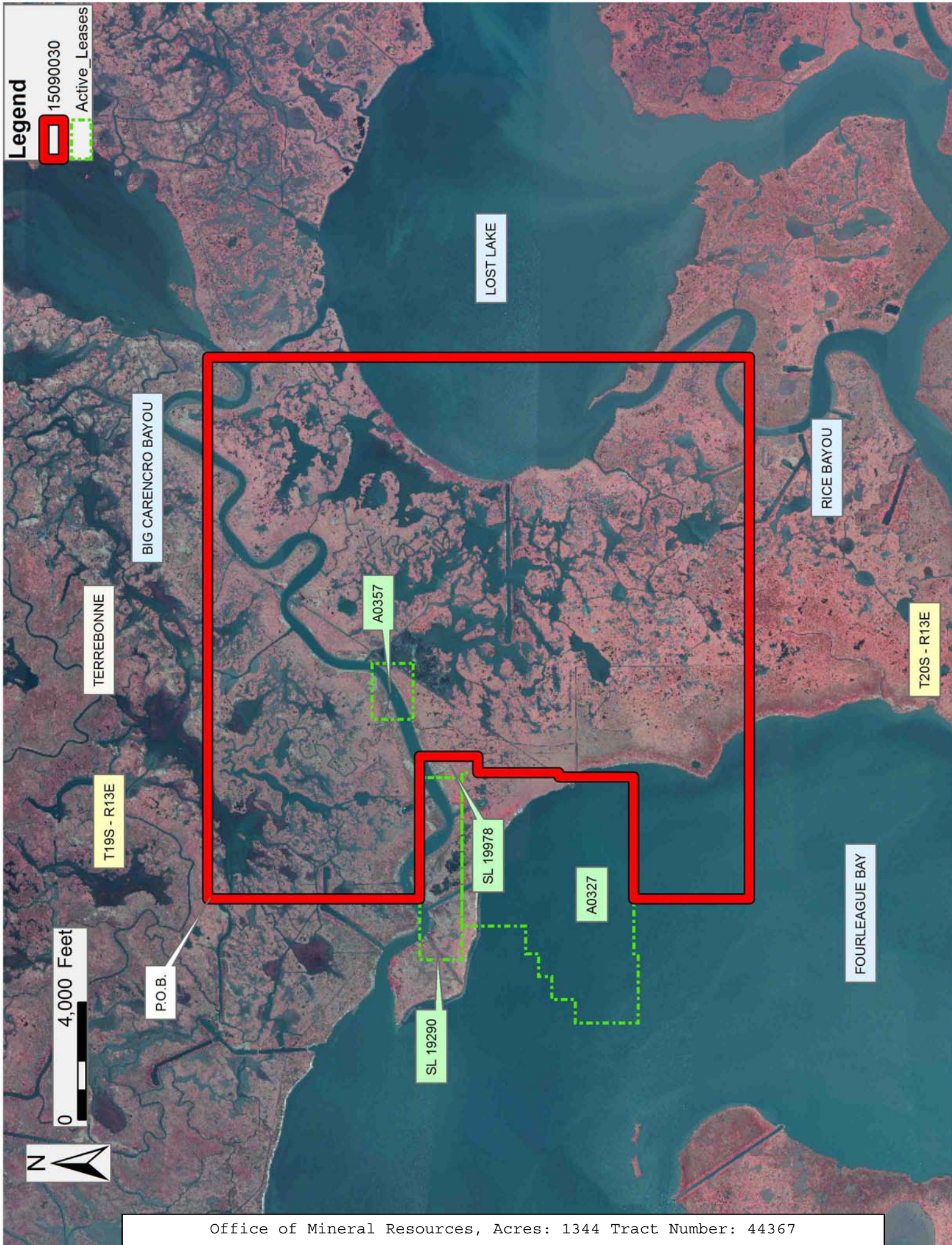
An error or omission in the nominating party's Tract description may require that a State mineral lease or geophysical agreement be modified, canceled or abrogated due to the existence of conflicting leases, operating agreements, private claims or other future obligations or conditions within the Tract described. In such case, however, the Louisiana State Mineral and Energy Board shall not be obligated to refund any consideration paid by the Lessee prior to such modification, cancellation or abrogation including, but not limited to, bonuses, rentals and royalties.

NOTE: The Office of Mineral Resources will require a minimum bonus of \$300 per acre and a minimum royalty of 25%.

NOTE: The State of Louisiana does hereby reserve, and this lease shall be subject to, the imprescriptible right of surface use in the nature of a servitude in favor of the Department of Natural Resources, including its Offices and Commissions, for the sole purpose of implementing, constructing, servicing and maintaining approved coastal zone management and/or restoration projects. Utilization of any and all rights derived under this lease by the mineral lessee, its agents, successors or assigns, shall not interfere with nor hinder the reasonable surface use by the Department of Natural Resources, its Offices or Commissions, as herein above reserved.

Applicant: ACADIAN LAND SERVICES, L.L.C.

Bidder	Cash Payment	Price/Acre	Rental	Oil	Gas	Other



Legend

-  15090030
-  Active_Leases

LOST LAKE

BIG CARENCRO BAYOU

RICE BAYOU

TERREBONNE

T20S - R13E

T19S - R13E

A0357

FOURLEAGUE BAY

P.O.B.

SL 19978

A0327

SL 19290

0 4,000 Feet



TRACT 44368 - St. Mary and Terrebonne Parishes, Louisiana

All of the lands now or formerly constituting the beds and bottoms of all water bodies of every nature and description as to which title is vested in the State of Louisiana, together with all islands arising therein and other lands formed by accretion or by reliction, where allowed by law, excepting tax adjudicated lands, and not presently under mineral lease on September 9, 2015, situated in St. Mary and Terrebonne Parishes, Louisiana, and more particularly described as follows: Beginning at a point having Coordinates of X = 2,032,144.03 and Y = 255,194.30; thence South 18,480.00 feet to a point having Coordinates of X = 2,032,144.03 and Y = 236,714.30; thence West approximately 17,895 feet to a point of intersection with the Eastern boundary of Atchafalaya Delta Wildlife Management Area having a Coordinate of Y = 236,714.30; thence Northeasterly along the meanders of the boundary of said Atchafalaya Delta Wildlife Management Area to a Point of intersection with an East line having a Coordinate of Y = 255,194.30; thence East approximately 5,202 feet to the point of beginning, **LESS AND EXCEPT** any right, title, and interest in lands owned by and not under lease from the State of Louisiana, on behalf of the Terrebonne Parish School Board, situated in Section 16, Township 20 South, Range 12 East, Terrebonne Parish, Louisiana, contained within the above described tract, containing approximately **750 acres**, all as more particularly outlined on a plat on file in the Office of Mineral Resources, Department of Natural Resources. All bearings, distances and coordinates are based on Louisiana Coordinate System of 1927, (North or South Zone), where applicable.

NOTE: The above description of the Tract nominated for the purpose of acquiring a mineral lease or a geophysical agreement has been provided and corrected, where required, exclusively by the nominating party. Any mineral lease or geophysical agreement selected from this Tract and awarded by the Louisiana State Mineral and Energy Board shall be without warranty of any kind, either express, implied or statutory including, but not limited to, title or the implied warranties of merchantability and fitness for a particular purpose.

An error or omission in the nominating party's Tract description may require that a State mineral lease or geophysical agreement be modified, canceled or abrogated due to the existence of conflicting leases, operating agreements, private claims or other future obligations or conditions within the Tract described. In such case, however, the Louisiana State Mineral and Energy Board shall not be obligated to refund any consideration paid by the Lessee prior to such modification, cancellation or abrogation including, but not limited to, bonuses, rentals and royalties.

NOTE: The Office of Mineral Resources will require a minimum bonus of \$300 per acre and a minimum royalty of 25%.

NOTE: The State of Louisiana does hereby reserve, and this lease shall be subject to, the imprescriptible right of surface use in the nature of a servitude in favor of the Department of Natural Resources, including its Offices and Commissions, for the sole purpose of implementing, constructing, servicing and maintaining approved coastal zone management and/or restoration projects. Utilization of any and all rights derived under this lease by the mineral lessee, its agents, successors or assigns, shall not interfere with nor hinder the reasonable surface use by the Department of Natural Resources, its Offices or Commissions, as herein above reserved.

NOTE: This tract is located in an area designated by the Louisiana Legislature or the Wildlife and Fisheries Commission as a Public Oyster Seed Ground, Reservation, or area of Calcasieu or Sabine Lake. Proposed projects occurring in these areas will be evaluated on a case by case basis by Louisiana Department of Wildlife & Fisheries. Modifications to proposed project features including, but not limited to, access routes, well sites, flowlines, and appurtenant structures maybe required by the Louisiana Department of Wildlife and Fisheries. In addition, compensatory mitigation will be required to offset unavoidable habitat impacts.

Applicant: ACADIAN LAND SERVICES, L.L.C.

Bidder	Cash Payment	Price/Acre	Rental	Oil	Gas	Other

Legend

- 15090035
- Wildlife
- Counties

T19S - R12E

FOURLEAGUE BAY

TERREBONNE

P.O.B.

CLAM LAKE

T20S - R12E

LAKE CHAPEAU

0 3,500 Feet

ST MARY

ATCHAFALAYA DELTA WMA

ATCHAFALAYA BAY

T20S - R11E



TRACT 44369 - Terrebonne Parish, Louisiana

All of the lands now or formerly constituting the beds and bottoms of all water bodies of every nature and description as to which title is vested in the State of Louisiana, together with all islands arising therein and other lands formed by accretion or by reliction, where allowed by law, excepting tax adjudicated lands, and not presently under mineral lease on September 9, 2015, situated in Terrebonne Parish, Louisiana, and more particularly described as follows: Beginning at a point having Coordinates of X = 2,045,439.66 and Y = 245,019.89; thence East 15,303.44 feet to a point on an Eastern boundary of Operating Agreement A0327 having Coordinates of X = 2,060,743.09 and Y = 245,019.89; thence along the boundary of said Operating Agreement A0327 the following courses: South 00 degrees 07 minutes 04 seconds East 666.09 feet to a point having Coordinates of X = 2,060,744.46 and Y = 244,353.81, West 941.00 feet to a point having Coordinates of X = 2,059,803.46 and Y = 244,353.81, South 443.50 feet to a point having Coordinates of X = 2,059,803.46 and Y = 243,910.31, West 782.50 feet to a point having Coordinates of X = 2,059,020.96 and Y = 243,910.31, South 443.50 feet to a point having Coordinates of X = 2,059,020.96 and Y = 243,466.81, West 782.50 feet to a point having Coordinates of X = 2,058,238.46 and Y = 243,466.81, South 800.00 feet to a point having Coordinates of X = 2,058,238.46 and Y = 242,666.81, West 800.00 feet to a point having Coordinates of X = 2,057,438.46 and Y = 242,666.81, South 2,150.00 feet to a point having Coordinates of X = 2,057,438.46 and Y = 240,516.81, East 2,365.00 feet to a point having Coordinates of X = 2,059,803.46 and Y = 240,516.81, North 150.00 feet to a point having Coordinates of X = 2,059,803.46 and Y = 240,666.81, East 1,875.26 feet to a point having Coordinates of X = 2,061,678.72 and Y = 240,666.81; thence South 3,952.51 feet to a point having Coordinates of X = 2,061,678.72 and Y = 236,714.30; thence West 16,239.07 feet to a point having Coordinates of X = 2,045,439.66 and Y = 236,714.30; thence North 8,305.59 feet to the point of beginning, containing approximately **2,492 acres**, all as more particularly outlined on a plat on file in the Office of Mineral Resources, Department of Natural Resources. All bearings, distances and coordinates are based on Louisiana Coordinate System of 1927, (North or South Zone), where applicable.

NOTE: The above description of the Tract nominated for the purpose of acquiring a mineral lease or a geophysical agreement has been provided and corrected, where required, exclusively by the nominating party. Any mineral lease or geophysical agreement selected from this Tract and awarded by the Louisiana State Mineral and Energy Board shall be without warranty of any kind, either express, implied or statutory including, but not limited to, title or the implied warranties of merchantability and fitness for a particular purpose.

An error or omission in the nominating party's Tract description may require that a State mineral lease or geophysical agreement be modified, canceled or abrogated due to the existence of conflicting leases, operating agreements, private claims or other future obligations or

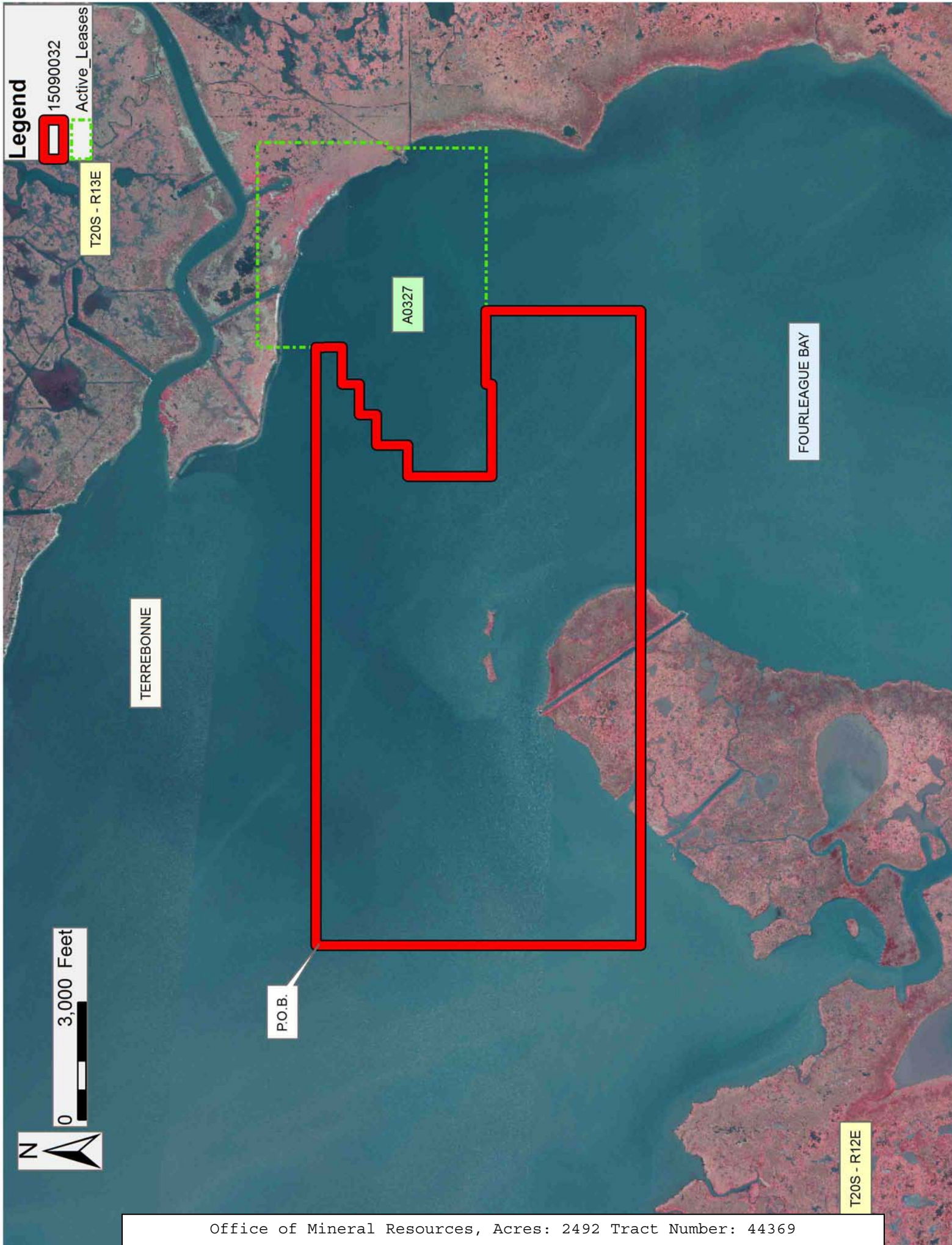
conditions within the Tract described. In such case, however, the Louisiana State Mineral and Energy Board shall not be obligated to refund any consideration paid by the Lessee prior to such modification, cancellation or abrogation including, but not limited to, bonuses, rentals and royalties.

NOTE: The Office of Mineral Resources will require a minimum bonus of \$300 per acre and a minimum royalty of 25%.

NOTE: The State of Louisiana does hereby reserve, and this lease shall be subject to, the imprescriptible right of surface use in the nature of a servitude in favor of the Department of Natural Resources, including its Offices and Commissions, for the sole purpose of implementing, constructing, servicing and maintaining approved coastal zone management and/or restoration projects. Utilization of any and all rights derived under this lease by the mineral lessee, its agents, successors or assigns, shall not interfere with nor hinder the reasonable surface use by the Department of Natural Resources, its Offices or Commissions, as herein above reserved.

Applicant: ACADIAN LAND SERVICES, L.L.C.

Bidder	Cash Payment	Price/Acre	Rental	Oil	Gas	Other



Legend

15090032
Active_Leases

T20S - R13E

A0327

TERREBONNE

FOURLEAGUE BAY

P.O.B.

0 3,000 Feet

T20S - R12E

TRACT 44370 - Portion of Block 36, Eugene Island Area, Revised, St. Mary and Terrebonne Parishes, Louisiana

All of the lands now or formerly constituting the beds and bottoms of all water bodies of every nature and description as to which title is vested in the State of Louisiana, together with all islands arising therein and other lands formed by accretion or by reliction, where allowed by law, excepting tax adjudicated lands, and not presently under mineral lease on September 9, 2015, situated in St. Mary and Terrebonne Parishes, Louisiana, and more particularly described as follows: Beginning at a point having Coordinates of X = 1,992,904.77 and Y = 239,665.69; thence East approximately 2,134 feet to a point on the Southern boundary of the Atchafalaya Delta Wildlife Management Area having a Coordinate of Y = 239,665.69; thence Southeasterly, Easterly, and Northeasterly along the Southern boundary of said Wildlife Management Area to a point having a Coordinate of Y = 233,222.14; thence South approximately 1,708 feet to a point on the Northern most boundary line of State Lease No. 649, as amended, or the Westward extension thereof having a Coordinate of X = 2,009,624.14; thence North 89 degrees 59 minutes 37 seconds West approximately 3,116 feet along the Northern boundary of said State Lease No. 649 to its most Northwestern corner; thence South 00 degrees 00 minutes 27 seconds West 4,951.43 feet along the Northwestern most boundary line of said State Lease No. 649 to its inside Northwest corner; thence South 89 degrees 09 minutes 00 seconds West approximately 4,319 feet along said State Lease No. 649 boundary to a common point said to be the Western corner of State Lease No. 649 and the Louisiana Coastline, as decreed by the Supreme Court of the United States, as determined by a Special Master appointed therein, in litigation styled *United States v. State of Louisiana et al No. 9 Original*, in 1975; thence Northwesterly along said Shoreline on a straight line to a point having Coordinates of X = 2,000,030 and Y = 228,573; thence Northwesterly along said Shoreline on a straight line to a point having Coordinates of X = 1,998,568 and Y = 230,370; thence Northwesterly along said Shoreline on a straight line to a point having Coordinates of X = 1,996,506 and Y = 233,983; thence Northwesterly along said Shoreline on a straight line to a point having Coordinates of X = 1,995,220 and Y = 235,805; thence Northwesterly along said Shoreline on a straight line to a point having Coordinates of X = 1,992,904.77 and Y = 237,396.13; thence North 2,269.56 feet to the point of beginning, **LESS AND EXCEPT** all that portion of said State Lease No. 649, if any, that may lie within the above described tract, containing approximately **388 acres**, all as more particularly outlined on a plat on file in the Office of Mineral Resources, Department of Natural Resources. All bearings, distances and coordinates are based on Louisiana Coordinate System of 1927, (North or South Zone), where applicable.

NOTE: The above description of the Tract nominated for the purpose of acquiring a mineral lease or a geophysical agreement has been provided and corrected, where required, exclusively by the nominating party. Any mineral lease or geophysical agreement selected from this Tract and awarded by the Louisiana State Mineral and Energy Board shall be without

warranty of any kind, either express, implied or statutory including, but not limited to, title or the implied warranties of merchantability and fitness for a particular purpose.

An error or omission in the nominating party's Tract description may require that a State mineral lease or geophysical agreement be modified, canceled or abrogated due to the existence of conflicting leases, operating agreements, private claims or other future obligations or conditions within the Tract described. In such case, however, the Louisiana State Mineral and Energy Board shall not be obligated to refund any consideration paid by the Lessee prior to such modification, cancellation or abrogation including, but not limited to, bonuses, rentals and royalties.

NOTE: The Office of Mineral Resources will require a minimum bonus of \$300 per acre and a minimum royalty of 25%.

NOTE: The above described tract may be in the vicinity of existing shell reefs where drilling and dredging operations must be conducted in strict conformity with the regulations adopted by the Louisiana Department of Wildlife and Fisheries and/or the U.S. Corps of Engineers, U.S. Army.

NOTE: The State of Louisiana does hereby reserve, and this lease shall be subject to, the imprescriptible right of surface use in the nature of a servitude in favor of the Department of Natural Resources, including its Offices and Commissions, for the sole purpose of implementing, constructing, servicing and maintaining approved coastal zone management and/or restoration projects. Utilization of any and all rights derived under this lease by the mineral lessee, its agents, successors or assigns, shall not interfere with nor hinder the reasonable surface use by the Department of Natural Resources, its Offices or Commissions, as herein above reserved.

NOTE: This tract is located in an area designated by the Louisiana Legislature or the Wildlife and Fisheries Commission as a Public Oyster Seed Ground, Reservation, or area of Calcasieu or Sabine Lake. Proposed projects occurring in these areas will be evaluated on a case by case basis by Louisiana Department of Wildlife & Fisheries. Modifications to proposed project features including, but not limited to, access routes, well sites, flowlines, and appurtenant structures maybe required by the Louisiana Department of Wildlife and Fisheries. In addition, compensatory mitigation will be required to offset unavoidable habitat impacts.

Applicant: ACADIAN LAND SERVICES, L.L.C.

Bidder	Cash Payment	Price/Acre	Rental	Oil	Gas	Other

