

**TRACT 42284 - St. Landry Parish, Louisiana**

A certain Tract of land, excluding the beds and bottoms of all navigable waters, belonging to and not presently under mineral lease from Louisiana Department Of Transportation And Development on September 14, 2011, being more fully described as follows: All of the dedicated roads, streets, alleys, easements, servitudes, drainages, canals, ditches, waste treatment plants and all other lands belonging to the Louisiana Department of Transportation and Development, situated in Township 7 South, Range 2 East and Township 7 South, Range 3 East, St. Landry Parish, Louisiana, located within the following described area: Beginning at a point having Coordinates of X = 1,721,020.00 and Y = 653,677.00; thence East 16,578.00 feet to a point having Coordinates of X = 1,737,598.00 and Y = 653,677.00; thence South 8,816.00 feet to a point having Coordinates of X = 1,737,598.00 and Y = 644,861.00; thence West 16,578.00 feet to a point having Coordinates of X = 1,721,020.00 and Y = 644,861.00; thence North 8,816.00 feet to the point of beginning, containing approximately **12 acres**, all as more particularly outlined on a plat on file in the Office of Mineral Resources, Department of Natural Resources. The description is based on information provided by the State Agency regarding location and ownership of surface and mineral rights. All bearings, distances and coordinates, if applicable, are based on Louisiana Coordinate System of 1927, (North or South Zone).

NOTE: The above description of the Tract nominated for lease has been provided and corrected, where required, exclusively by the nomination party. Any mineral lease selected from this Tract and awarded by the Louisiana State Mineral and Energy Board shall be without warranty of any kind, either express, implied, or statutory, including, but not limited to, the implied warranties of merchantability and fitness for a particular purpose. Should the mineral lease awarded by the Louisiana State Mineral and Energy Board be subsequently modified, cancelled or abrogated due to the existence of conflicting leases, operating agreements, private claims or other future obligations or conditions which may affect all or any portion of the leased Tract, it shall not relieve the Lessee of the obligation to pay any bonus due thereon to the Louisiana State Mineral and Energy Board, nor shall the Louisiana State Mineral and Energy Board be obligated to refund any consideration paid by the Lessor prior to such modification, cancellation, or abrogation, including, but not limited to, bonuses, rentals and royalties.

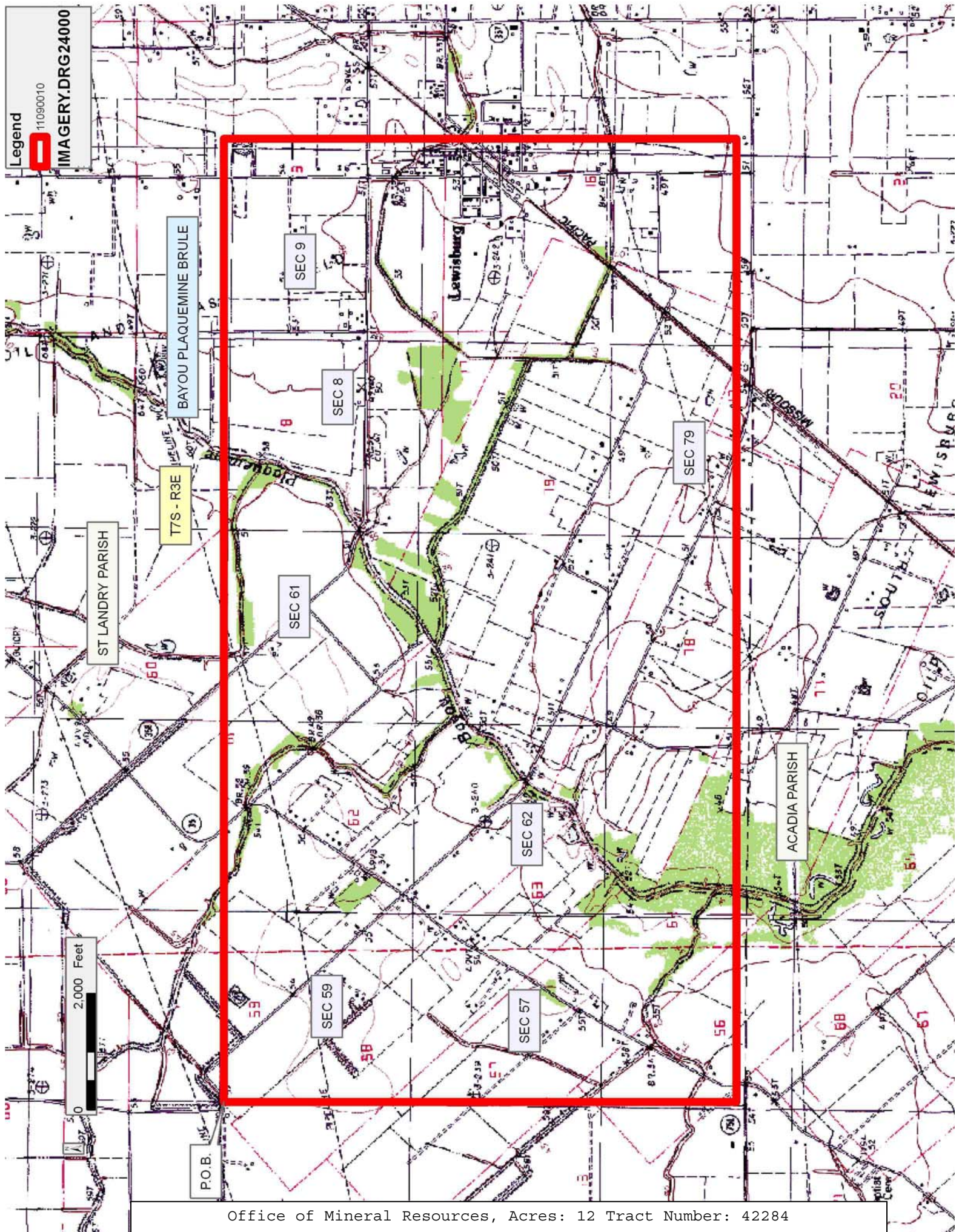
NOTE: No surface operations will be performed on the property.

Bidder	Cash Payment	Price/ Acre	Rental	Oil	Gas	Other

--	--	--	--	--	--	--

Applicant: SAUR MINERALS, LLC to Agency and by Resolution from the Louisiana Department Of Transportation And Development authorizing the Mineral Board to act in its behalf







**TRACT 42285 - St. Landry Parish, Louisiana**

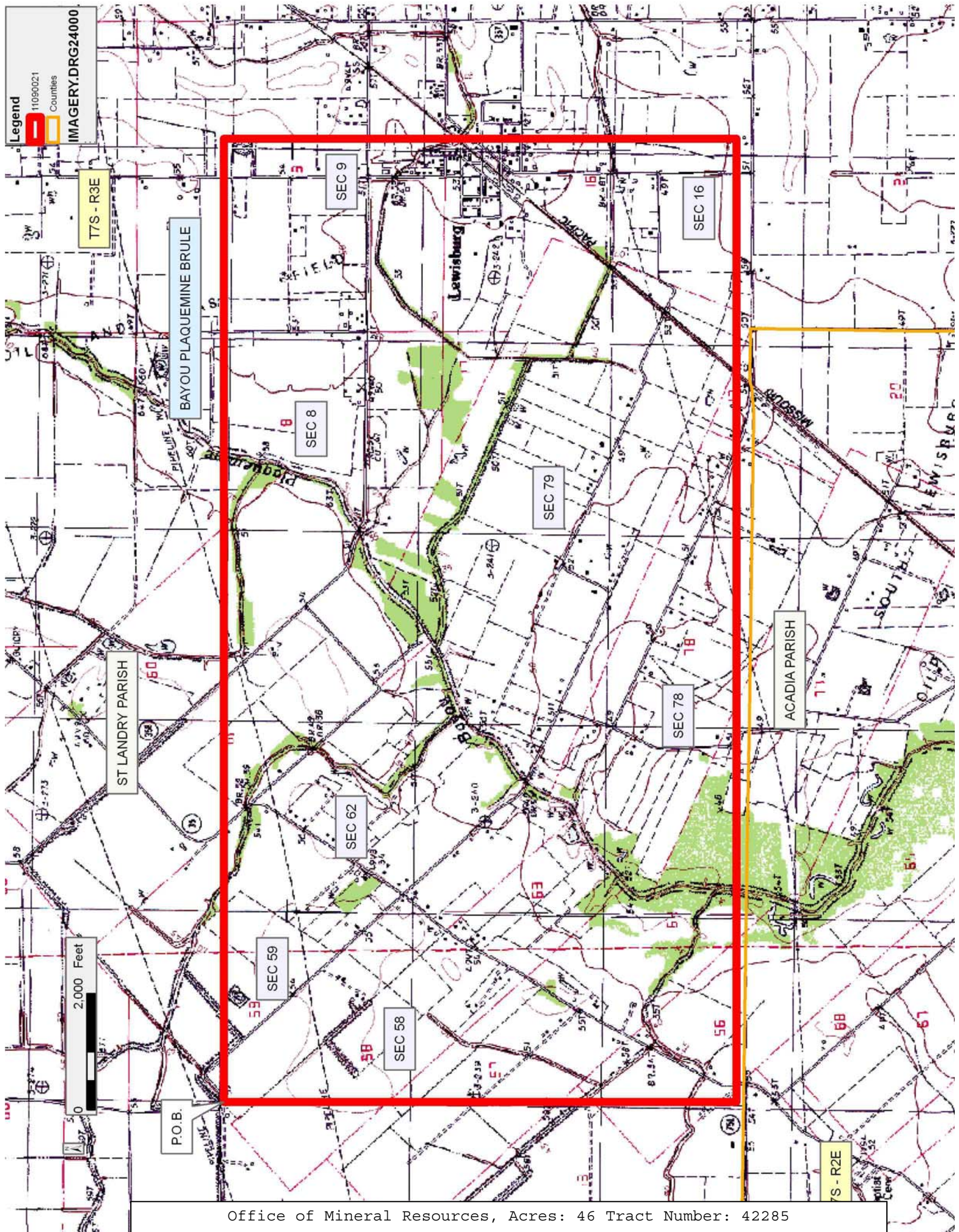
A certain Tract of land, excluding the beds and bottoms of all navigable waters, belonging to and not presently under mineral lease from St. Landry Parish Government on September 14, 2011, being more fully described as follows: All of the dedicated roads, streets, alleys, easements, servitudes, drainages, canals, ditches, waste treatment plants and all other lands belonging to the St. Landry Parish Government situated in Township 7 South, Range 2 East and Township 7 South, Range 3 East, St. Landry Parish, Louisiana, located within the following described area: Beginning at a point having Coordinates of X = 1,721,020.00 and Y = 653,677.00; thence East 16,578.00 feet to a point having Coordinates of X = 1,737,598.00 and Y = 653,677.00; thence South 8,816.00 feet to a point having Coordinates of X = 1,737,598.00 and Y = 644,861.00; thence West 16,578.00 feet to a point having Coordinates of X = 1,721,020.00 and Y = 644,861.00; thence North 8,816.00 feet to the point of beginning, containing approximately **46 acres**, all as more particularly outlined on a plat on file in the Office of Mineral Resources, Department of Natural Resources. The description is based on information provided by the State Agency regarding location and ownership of surface and mineral rights. All bearings, distances and coordinates, if applicable, are based on Louisiana Coordinate System of 1927, (North or South Zone).

NOTE: The above description of the Tract nominated for lease has been provided and corrected, where required, exclusively by the nomination party. Any mineral lease selected from this Tract and awarded by the Louisiana State Mineral and Energy Board shall be without warranty of any kind, either express, implied, or statutory, including, but not limited to, the implied warranties of merchantability and fitness for a particular purpose. Should the mineral lease awarded by the Louisiana State Mineral and Energy Board be subsequently modified, cancelled or abrogated due to the existence of conflicting leases, operating agreements, private claims or other future obligations or conditions which may affect all or any portion of the leased Tract, it shall not relieve the Lessee of the obligation to pay any bonus due thereon to the Louisiana State Mineral and Energy Board, nor shall the Louisiana State Mineral and Energy Board be obligated to refund any consideration paid by the Lessor prior to such modification, cancellation, or abrogation, including, but not limited to, bonuses, rentals and royalties.

Applicant: SAUR MINERALS, LLC to Agency and by Resolution from the St. Landry Parish Government authorizing the Mineral Board to act in its behalf

Bidder	Cash Payment	Price/ Acre	Rental	Oil	Gas	Other







**TRACT 42286 - Acadia Parish, Louisiana**

A certain Tract of land, excluding the beds and bottoms of all navigable waters, belonging to and not presently under mineral lease from Louisiana Department Of Transportation And Development on September 14, 2011, being more fully described as follows: All of the dedicated roads, streets, alleys, easements, servitudes, drainages, canals, ditches, waste treatment plants and all other lands belonging to the Louisiana Department Of Transportation And Development, situated in Township 7 South, Range 2 East, and Township 7 South, Range 3 East, and Township 8 South, Range 2 East, and Township 8 South, Range 3 East, Acadia Parish, Louisiana, located within the following described area: Beginning at a point having Coordinates of X = 1,715,653.00 and Y = 639,337.00; thence East 13,082.00 feet to a point having Coordinates of X = 1,728,735.00 and Y = 639,337.00; thence South 12,800.00 feet to a point having Coordinates of X = 1,728,735.00 and Y = 626,537.00; thence West 13,082.00 feet to a point having Coordinates of X = 1,715,653.00 and Y = 626,537.00; thence North 12,800.00 feet to the point of beginning, containing approximately **68 acres**, all as more particularly outlined on a plat on file in the Office of Mineral Resources, Department of Natural Resources. The description is based on information provided by the State Agency regarding location and ownership of surface and mineral rights. All bearings, distances and coordinates, if applicable, are based on Louisiana Coordinate System of 1927, (North or South Zone).

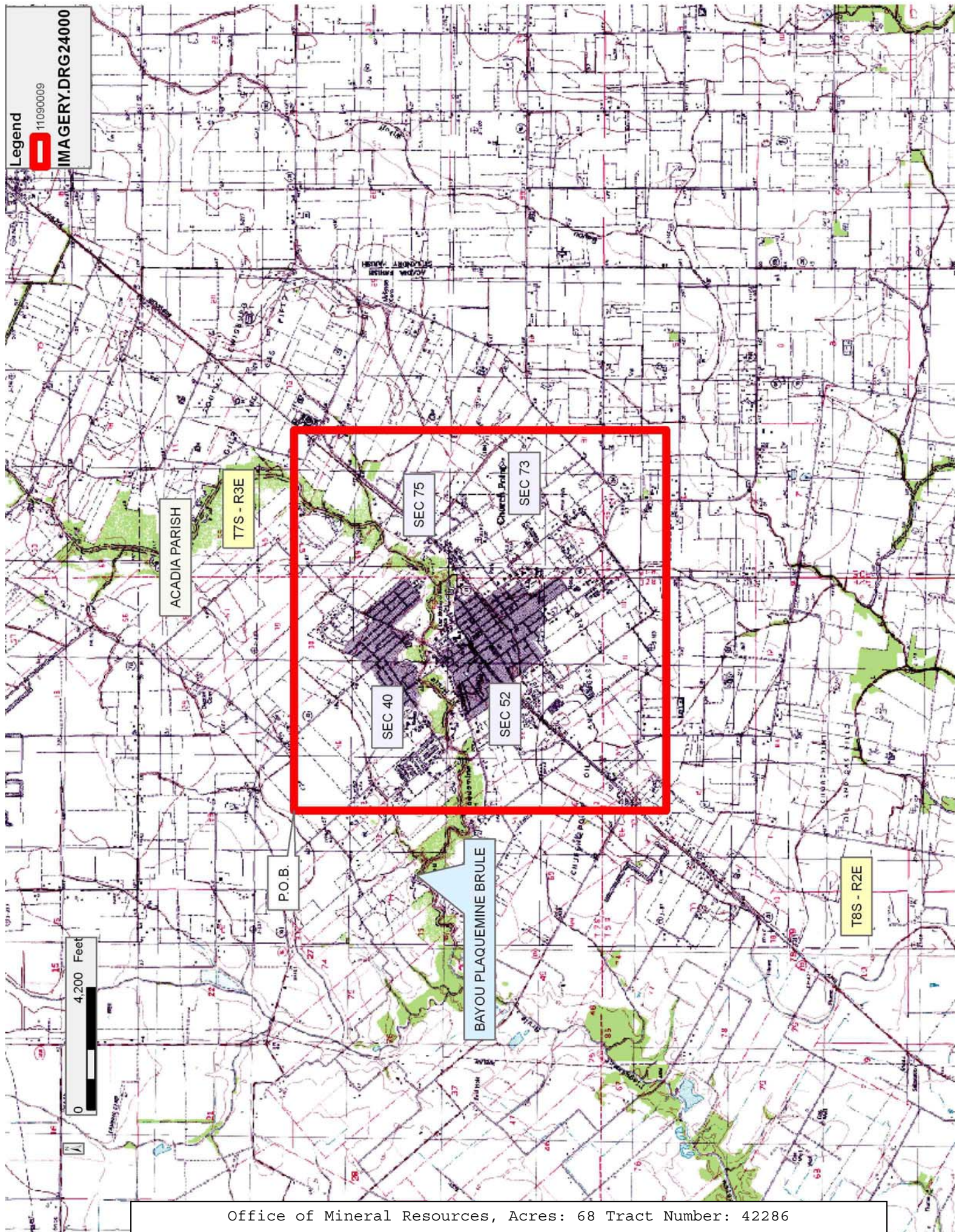
NOTE: The above description of the Tract nominated for lease has been provided and corrected, where required, exclusively by the nomination party. Any mineral lease selected from this Tract and awarded by the Louisiana State Mineral and Energy Board shall be without warranty of any kind, either express, implied, or statutory, including, but not limited to, the implied warranties of merchantability and fitness for a particular purpose. Should the mineral lease awarded by the Louisiana State Mineral and Energy Board be subsequently modified, cancelled or abrogated due to the existence of conflicting leases, operating agreements, private claims or other future obligations or conditions which may affect all or any portion of the leased Tract, it shall not relieve the Lessee of the obligation to pay any bonus due thereon to the Louisiana State Mineral and Energy Board, nor shall the Louisiana State Mineral and Energy Board be obligated to refund any consideration paid by the Lessor prior to such modification, cancellation, or abrogation, including, but not limited to, bonuses, rentals and royalties.

NOTE: No surface operations will be performed on the property.

Applicant: SAUR MINERALS, LLC to Agency and by Resolution from the Louisiana Department Of Transportation And Development authorizing the Mineral Board to act in its behalf

Bidder	Cash Payment	Price/ Acre	Rental	Oil	Gas	Other







**TRACT 42287 - Acadia Parish, Louisiana**

A certain Tract of land, excluding the beds and bottoms of all navigable waters, belonging to and not presently under mineral lease from Town Of Church Point on September 14, 2011, being more fully described as follows: All of the dedicated streets, alleys, walks, parks and all other open spaces situated in the following described boundary: Beginning at a point having Coordinates of X = 1,715,653.00 and Y = 639,337.00; thence East 13,082.00 feet to a point having Coordinates of X = 1,728,735.00 and Y = 639,337.00; thence South 12,800.00 feet to a point having Coordinates of X = 1,728,735.00 and Y = 626,537.00; thence West 13,082.00 feet to a point having Coordinates of X = 1,715,653.00 and Y = 626,537.00; thence North 12,800.00 feet to the point of beginning, containing approximately **200 acres**, all as more particularly outlined on a plat on file in the Office of Mineral Resources, Department of Natural Resources. The description is based on information provided by the State Agency regarding location and ownership of surface and mineral rights. All bearings, distances and coordinates, if applicable, are based on Louisiana Coordinate System of 1927, (North or South Zone).

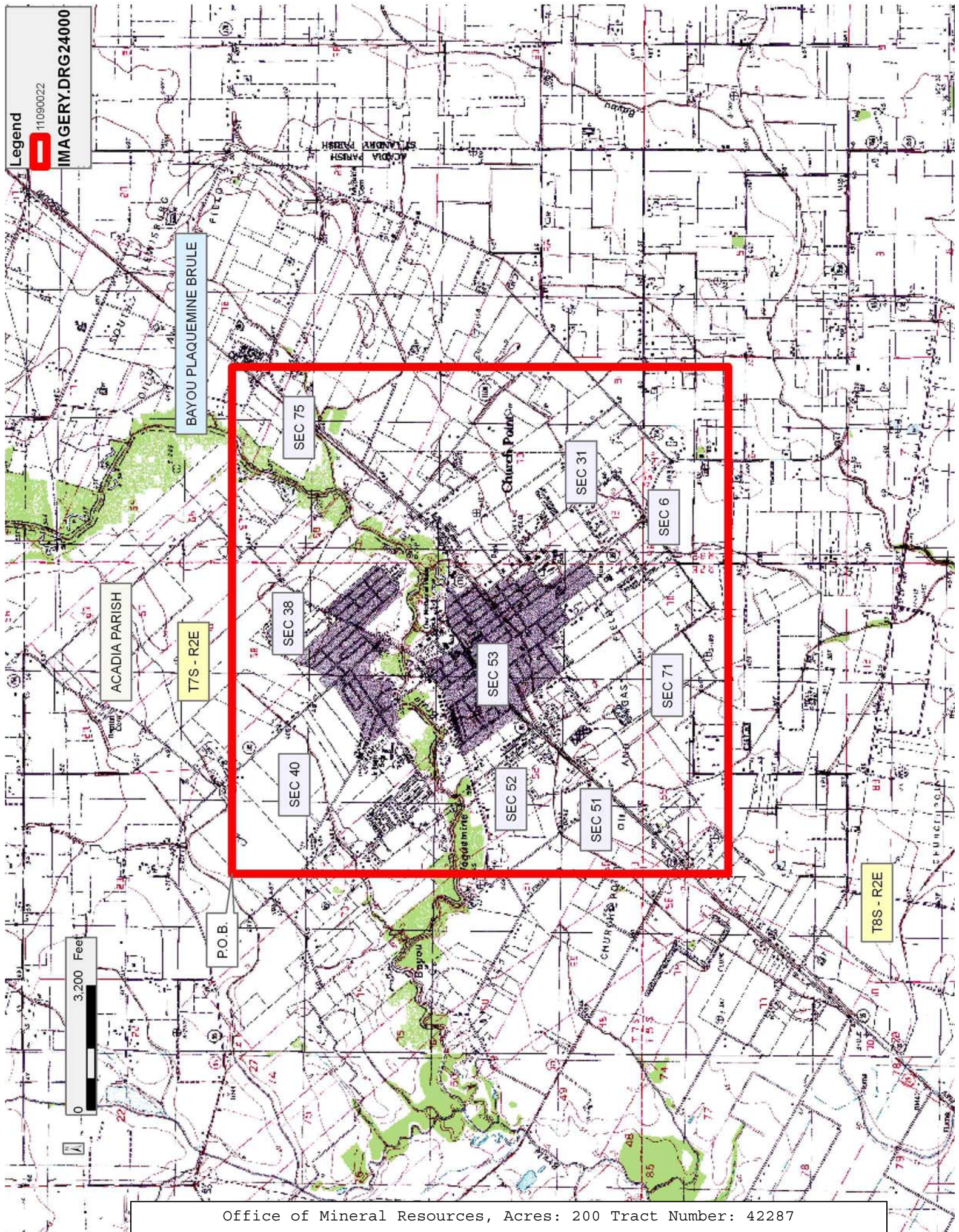
NOTE: The above description of the Tract nominated for lease has been provided and corrected, where required, exclusively by the nomination party. Any mineral lease selected from this Tract and awarded by the Louisiana State Mineral and Energy Board shall be without warranty of any kind, either express, implied, or statutory, including, but not limited to, the implied warranties of merchantability and fitness for a particular purpose. Should the mineral lease awarded by the Louisiana State Mineral and Energy Board be subsequently modified, cancelled or abrogated due to the existence of conflicting leases, operating agreements, private claims or other future obligations or conditions which may affect all or any portion of the leased Tract, it shall not relieve the Lessee of the obligation to pay any bonus due thereon to the Louisiana State Mineral and Energy Board, nor shall the Louisiana State Mineral and Energy Board be obligated to refund any consideration paid by the Lessor prior to such modification, cancellation, or abrogation, including, but not limited to, bonuses, rentals and royalties.

Applicant: SAUR MINERALS, LLC to Agency and by Resolution from the Town Of

Bidder	Cash Payment	Price/ Acre	Rental	Oil	Gas	Other

Church Point authorizing the Mineral Board to act in its behalf







**TRACT 42288 - Acadia Parish, Louisiana**

A certain Tract of land, excluding the beds and bottoms of all navigable waters, belonging to and not presently under mineral lease from Acadia Parish Police Jury on September 14, 2011, being more fully described as follows: All of the dedicated roads, streets, alleys, easements, servitudes, drainages, canals, ditches, waste treatment plants and all other lands belonging to the Acadia Parish Police Jury, situated in Township 7 South, Range 2 East and Township 7 South, Range 3 East and Township 8 South, Range 2 East and Township 8 South, Range 3 East, Acadia Parish, Louisiana, located within the following described area: Beginning at a point having Coordinates of X = 1,715,653.00 and Y = 639,337.00; thence East 13,082.00 feet to a point having Coordinates of X = 1,728,735.00 and Y = 639,337.00; thence South 12,800.00 feet to a point having Coordinates of X = 1,728,735.00 and Y = 626,537.00; thence West 13,082.00 feet to a point having Coordinates of X = 1,715,653.00 and Y = 626,537.00; thence North 12,800.00 feet to the point of beginning, containing approximately **52 acres**, all as more particularly outlined on a plat on file in the Office of Mineral Resources, Department of Natural Resources. The description is based on information provided by the State Agency regarding location and ownership of surface and mineral rights. All bearings, distances and coordinates, if applicable, are based on Louisiana Coordinate System of 1927, (North or South Zone).

NOTE: The above description of the Tract nominated for lease has been provided and corrected, where required, exclusively by the nomination party. Any mineral lease selected from this Tract and awarded by the Louisiana State Mineral and Energy Board shall be without warranty of any kind, either express, implied, or statutory, including, but not limited to, the implied warranties of merchantability and fitness for a particular purpose. Should the mineral lease awarded by the Louisiana State Mineral and Energy Board be subsequently modified, cancelled or abrogated due to the existence of conflicting leases, operating agreements, private claims or other future obligations or conditions which may affect all or any portion of the leased Tract, it shall not relieve the Lessee of the obligation to pay any bonus due thereon to the Louisiana State Mineral and Energy Board, nor shall the Louisiana State Mineral and Energy Board be obligated to refund any consideration paid by the Lessor prior to such modification, cancellation, or abrogation, including, but not limited to, bonuses, rentals and royalties.

NOTE: No surface or drilling operations will be conducted on the property.

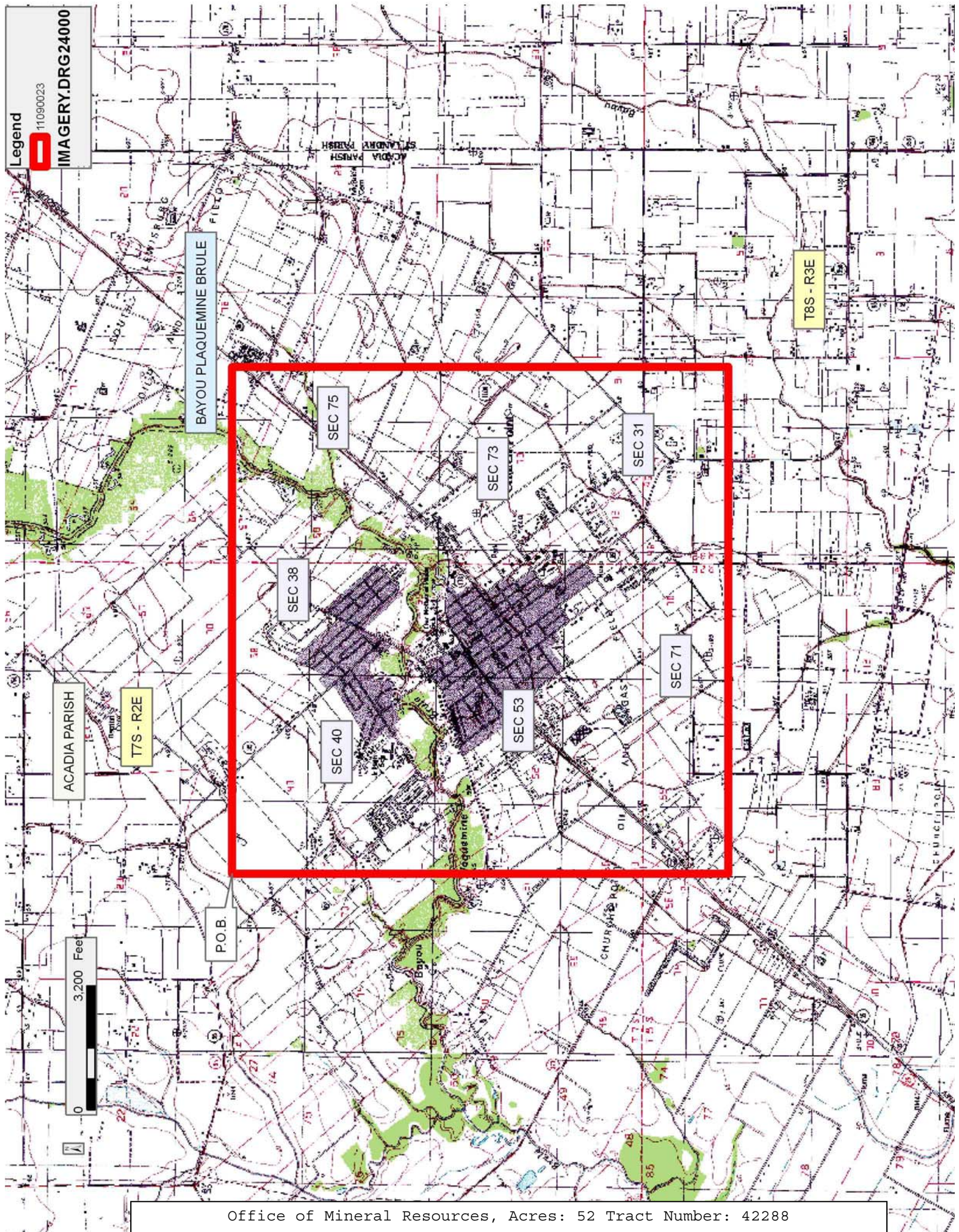
NOTE: Lessee shall at all times comply with all applicable environmental and wetlands laws and regulations promulgated by the federal government, the State of Louisiana, and/or any department office, or agency thereof, and Lessee shall obtain all licenses and/or permits required under such laws and regulations.

NOTE: Lessee, or any assignee, shall be required to obtain consent from the Acadia Parish Police Jury prior to the execution of any assignment, sublease or other transfer.

Applicant: SAUR MINERALS, LLC to Agency and by Resolution from the Acadia Parish Police Jury authorizing the Mineral Board to act in its behalf

Bidder	Cash Payment	Price/ Acre	Rental	Oil	Gas	Other







**TRACT 42289 - Lafayette and St. Landry Parishes, Louisiana**

A certain Tract of land, excluding the beds and bottoms of all navigable waters, belonging to and not presently under mineral lease from Louisiana Department Of Transportation And Development on September 14, 2011, being more fully described as follows: All of the dedicated roads, streets, alleys, easements, servitudes, drainages, canals, ditches, waste treatment plants and all other lands belonging to the Louisiana Department of Transportation and Development, situated in Township 8 South, Range 3 East and Township 8 South, Range 4 East, Lafayette & St. Landry Parishes, Louisiana, located within the following described area: Beginning at a point having Coordinates of X = 1,747,422.00 and Y = 615,221.00; thence East 18,480.00 feet to a point having Coordinates of X = 1,765,902.00 and Y = 615,221.00; thence South 13,920.00 feet to a point having Coordinates of X = 1,765,902.00 and Y = 601,301.00; thence West 18,480.00 feet to a point having Coordinates of X = 1,747,422.00 and Y = 601,301.00; thence North 13,920.00 feet to the point of beginning, containing approximately **17 acres**, all as more particularly outlined on a plat on file in the Office of Mineral Resources, Department of Natural Resources. The description is based on information provided by the State Agency regarding location and ownership of surface and mineral rights. All bearings, distances and coordinates, if applicable, are based on Louisiana Coordinate System of 1927, (North or South Zone).

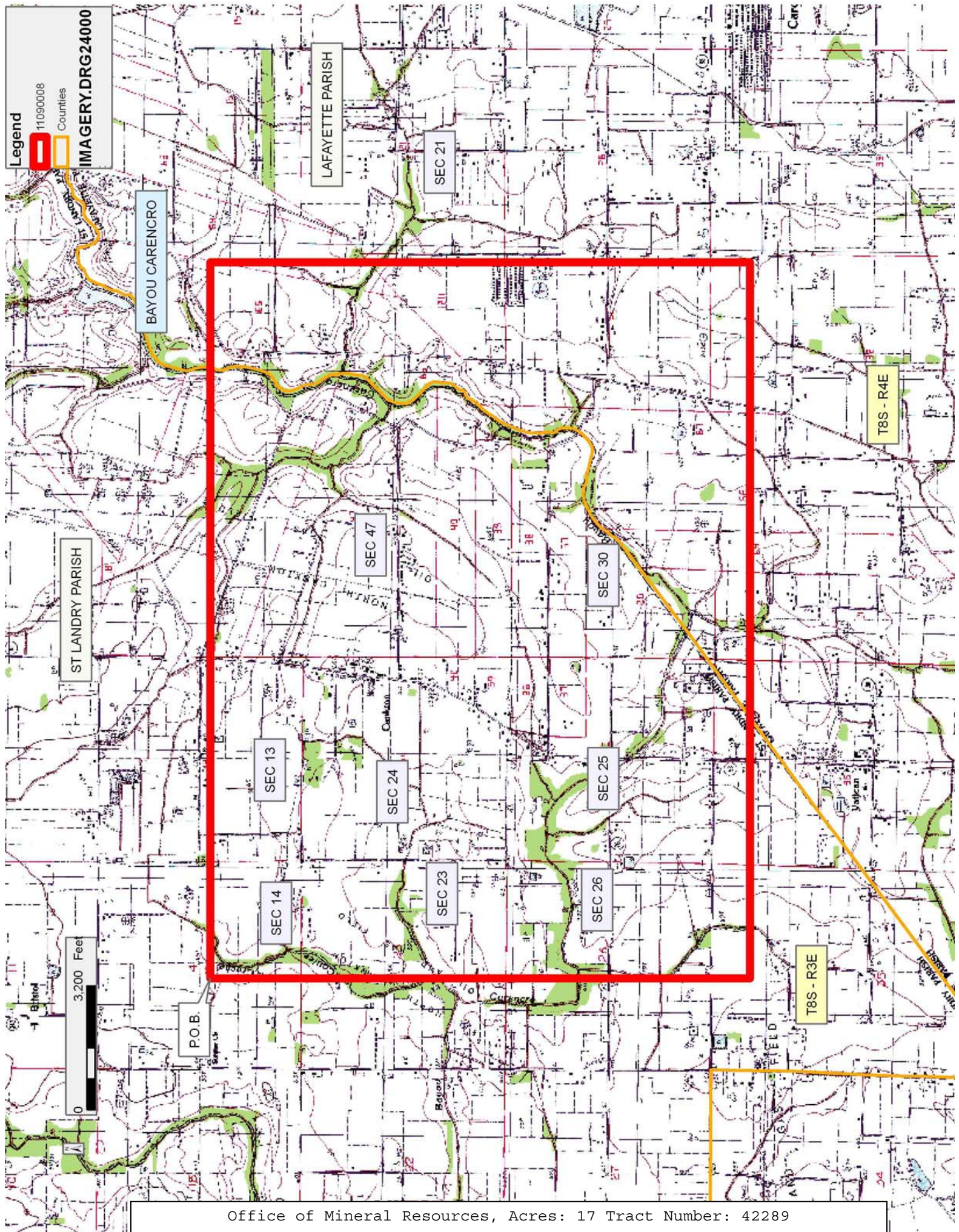
NOTE: The above description of the Tract nominated for lease has been provided and corrected, where required, exclusively by the nomination party. Any mineral lease selected from this Tract and awarded by the Louisiana State Mineral and Energy Board shall be without warranty of any kind, either express, implied, or statutory, including, but not limited to, the implied warranties of merchantability and fitness for a particular purpose. Should the mineral lease awarded by the Louisiana State Mineral and Energy Board be subsequently modified, cancelled or abrogated due to the existence of conflicting leases, operating agreements, private claims or other future obligations or conditions which may affect all or any portion of the leased Tract, it shall not relieve the Lessee of the obligation to pay any bonus due thereon to the Louisiana State Mineral and Energy Board, nor shall the Louisiana State Mineral and Energy Board be obligated to refund any consideration paid by the Lessor prior to such modification, cancellation, or abrogation, including, but not limited to, bonuses, rentals and royalties.

NOTE: No surface operations will be performed on the property.

Applicant: SAUR MINERALS, LLC to Agency and by Resolution from the Louisiana Department Of Transportation And Development authorizing the Mineral Board to act in its behalf

Bidder	Cash Payment	Price/ Acre	Rental	Oil	Gas	Other







**TRACT 42290 - St. Landry Parish, Louisiana**

A certain Tract of land, excluding the beds and bottoms of all navigable waters, belonging to and not presently under mineral lease from St. Landry Parish Government on September 14, 2011, being more fully described as follows: All of the dedicated roads, streets, alleys, easements, servitudes, drainages, canals, ditches, waste treatment plants and all other lands belonging to the St. Landry Parish Government situated in Township 8 South, Range 3 East and Township 8 South, Range 4 East, St. Landry Parish, Louisiana, located within the following described area: Beginning at a point having Coordinates of X = 1,747,422.00 and Y = 615,221.00; thence East 18,480.00 feet to a point having Coordinates of X = 1,765,902.00 and Y = 615,221.00; thence South 13,920.00 feet to a point having Coordinates of X = 1,765,902.00 and Y = 601,301.00; thence West 18,480.00 feet to a point having Coordinates of X = 1,747,422.00 and Y = 601,301.00; thence North 13,920.00 feet to the point of beginning, containing approximately **41 acres**, all as more particularly outlined on a plat on file in the Office of Mineral Resources, Department of Natural Resources. The description is based on information provided by the State Agency regarding location and ownership of surface and mineral rights. All bearings, distances and coordinates, if applicable, are based on Louisiana Coordinate System of 1927, (North or South Zone).

NOTE: The above description of the Tract nominated for lease has been provided and corrected, where required, exclusively by the nomination party. Any mineral lease selected from this Tract and awarded by the Louisiana State Mineral and Energy Board shall be without warranty of any kind, either express, implied, or statutory, including, but not limited to, the implied warranties of merchantability and fitness for a particular purpose. Should the mineral lease awarded by the Louisiana State Mineral and Energy Board be subsequently modified, cancelled or abrogated due to the existence of conflicting leases, operating agreements, private claims or other future obligations or conditions which may affect all or any portion of the leased Tract, it shall not relieve the Lessee of the obligation to pay any bonus due thereon to the Louisiana State Mineral and Energy Board, nor shall the Louisiana State Mineral and Energy Board be obligated to refund any consideration paid by the Lessor prior to such modification, cancellation, or abrogation, including, but not limited to, bonuses, rentals and royalties.

Applicant: SAUR MINERALS, LLC to Agency and by Resolution from the St. Landry Parish Government authorizing the Mineral Board to act in its behalf

Bidder	Cash Payment	Price/ Acre	Rental	Oil	Gas	Other



