

TRACT 42252 - De Soto and Natchitoches Parishes, Louisiana

All of the lands now or formerly constituting the beds and bottoms of all water bodies of every nature and description as to which title is vested in the State of Louisiana, together with all islands arising therein and other lands formed by accretion or by reliction, where allowed by law, excepting tax adjudicated lands, and not presently under mineral lease on September 14, 2011, situated in De Soto and Natchitoches Parishes, Louisiana, and more particularly described as follows: Beginning at a point on the North boundary of State Lease No. 20158 and a point on the East boundary of State Lease No. 15500 having Coordinates of X = 1,710,500.00 and Y = 472,205.00; thence North 5,160.00 feet along the East boundary of said State Lease No. 15500 to a point on the South boundary of State Lease No. 20156 having Coordinates of X = 1,710,500.00 and Y = 477,365.00; thence East 8,521.02 feet along the South boundary of said State Lease No. 20156 to a point having Coordinates of X = 1,719,021.02 and Y = 477,365.00; thence South 00 degrees 42 minutes 28 Seconds West 5,261.38 feet to a point having Coordinates of X = 1,718,956.04 and Y = 472,104.02; thence South 89 degrees 16 minutes 13 seconds East 5,109.38 feet to a point having Coordinates of X = 1,724,065.00 and Y = 472,038.95; thence South 10,368.95 feet to a point having Coordinates of X = 1,724,065.00 and Y = 461,670.00; thence West 15,875.00 feet to the Southeast corner of State Lease No. 20159 having Coordinates of X = 1,708,190.00 and Y = 461,670.00; thence North 01 degrees 22 minutes 27 seconds East 5,274.22 feet along the East boundary of said State Lease No. 20159 to its Northeast corner and the Southwest corner of said State Lease No. 20158 having Coordinates of X = 1,708,316.49 and Y = 466,942.70; thence along the boundaries of said State Lease No. 20158 the following courses: South 89 degrees 13 minutes 56 seconds East 5,258.35 feet to a point having Coordinates of X = 1,713,574.37 and Y = 466,872.23, North 01 degrees 18 minutes 14 seconds East 5,300.17 feet to a point having Coordinates of X = 1,713,694.97 and Y = 472,171.03, and North 89 degrees 23 minutes 27 seconds West 3,195.15 feet to the point of beginning, containing approximately **108 acres**, all as more particularly outlined on a plat on file in the Office of Mineral Resources, Department of Natural Resources. All bearings, distances and coordinates are based on Louisiana Coordinate System of 1927, (North or South Zone), where applicable.

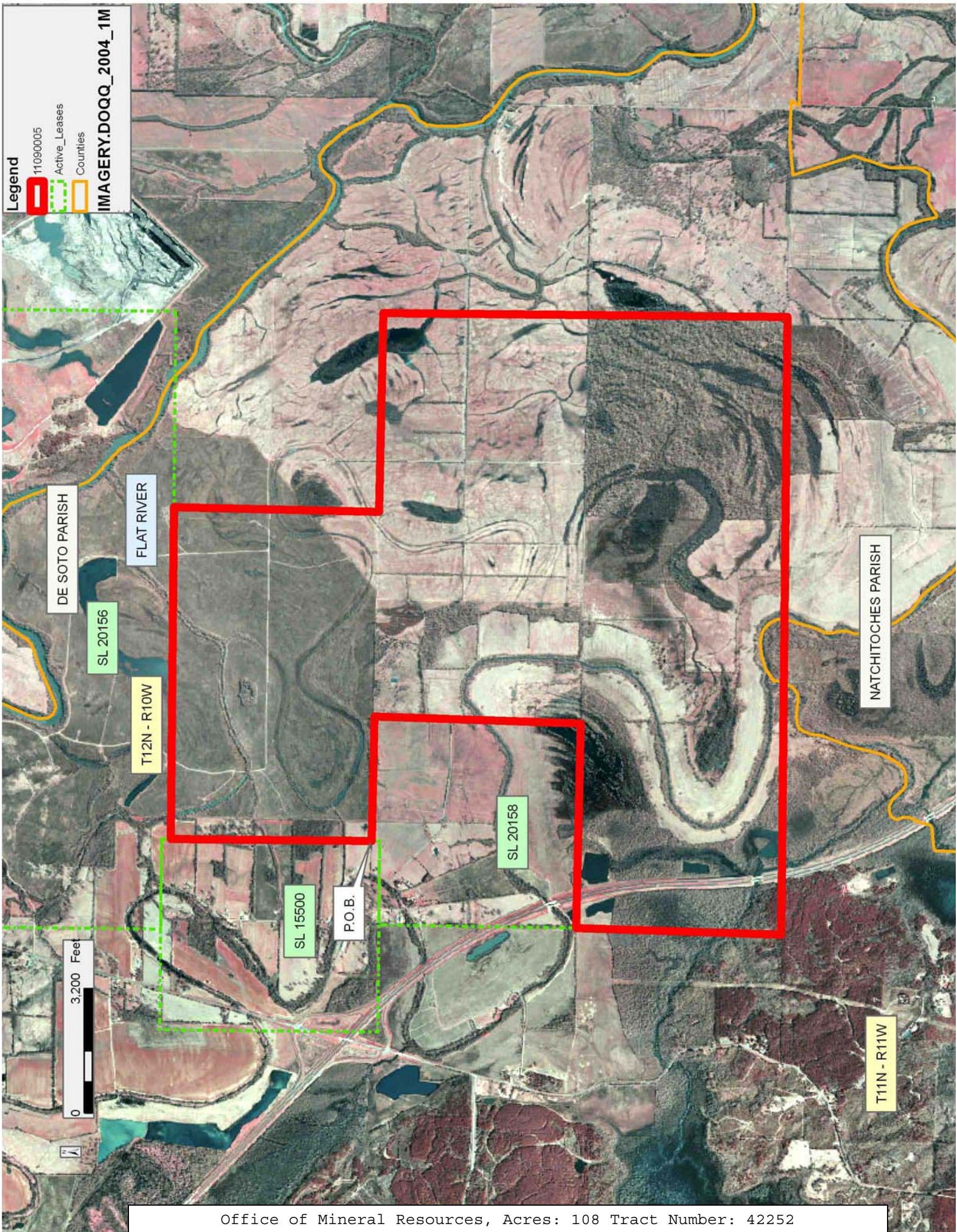
NOTE: The above description of the Tract nominated for lease has been provided and corrected, where required, exclusively by the nomination party. Any mineral lease selected from this Tract and awarded by the Louisiana State Mineral and Energy Board shall be without warranty of any kind, either express, implied, or statutory, including, but not limited to, the implied warranties of merchantability and fitness for a particular purpose. Should the mineral lease awarded by the Louisiana State Mineral and Energy Board be subsequently modified, cancelled or abrogated due to the existence of conflicting leases, operating agreements, private claims or other future obligations or conditions which may affect all or any portion of the leased Tract, it shall not relieve the Lessee of the obligation to pay any bonus due thereon to the Louisiana State Mineral and Energy Board, nor shall the Louisiana State Mineral and Energy Board be

obligated to refund any consideration paid by the Lessor prior to such modification, cancellation, or abrogation, including, but not limited to, bonuses, rentals and royalties.

NOTE: The Office of Mineral Resources will require a minimum bonus of \$1500 per acre and a minimum royalty of 25%.

Applicant: STAFF OFFICE OF MINERAL RESOURCES

Bidder	Cash Payment	Price/ Acre	Rental	Oil	Gas	Other



TRACT 42253 - De Soto and Natchitoches Parishes, Louisiana

All of the lands now or formerly constituting the beds and bottoms of all water bodies of every nature and description as to which title is vested in the State of Louisiana, together with all islands arising therein and other lands formed by accretion or by reliction, where allowed by law, excepting tax adjudicated lands, and not presently under mineral lease on September 14, 2011, situated in De Soto and Natchitoches Parishes, Louisiana, and more particularly described as follows: Beginning at a point having Coordinates of X = 1,708,230.43 and Y = 461,575.02; thence South 89 degrees 33 minutes 44 seconds East 5,297.62 feet to a point having Coordinates of X = 1,713,527.90 and Y = 461,534.55; thence South 00 degrees 42 minutes 31 seconds West 5,301.06 feet to a point having Coordinates of X = 1,713,462.34 and Y = 456,233.90; thence North 89 degrees 33 minutes 44 Seconds West 5,320.80 feet to a point having Coordinates of X = 1,708,141.70 and Y = 456,274.55; thence North 00 degrees 57 minutes 33 seconds East 5,301.22 feet to the point of beginning, containing approximately **12 acres**, all as more particularly outlined on a plat on file in the Office of Mineral Resources, Department of Natural Resources. All bearings, distances and coordinates are based on Louisiana Coordinate System of 1927, (North or South Zone), where applicable.

NOTE: The above description of the Tract nominated for lease has been provided and corrected, where required, exclusively by the nomination party. Any mineral lease selected from this Tract and awarded by the Louisiana State Mineral and Energy Board shall be without warranty of any kind, either express, implied, or statutory, including, but not limited to, the implied warranties of merchantability and fitness for a particular purpose. Should the mineral lease awarded by the Louisiana State Mineral and Energy Board be subsequently modified, cancelled or abrogated due to the existence of conflicting leases, operating agreements, private claims or other future obligations or conditions which may affect all or any portion of the leased Tract, it shall not relieve the Lessee of the obligation to pay any bonus due thereon to the Louisiana State Mineral and Energy Board, nor shall the Louisiana State Mineral and Energy Board be obligated to refund any consideration paid by the Lessor prior to such modification, cancellation, or abrogation, including, but not limited to, bonuses, rentals and royalties.

Applicant: MARK A. O'NEAL & ASSOCIATES, INC.

Bidder	Cash Payment	Price/ Acre	Rental	Oil	Gas	Other

DE SOTO PARISH

T11N - R10W

WALLACE BAYOU

NATCHITOCHES PARISH

SEC 37

SEC 19

SEC 30

P.O.B.

0 2,000 Feet

TRACT 42254 - Concordia Parish, Louisiana

All of the lands now or formerly constituting the beds and bottoms of all water bodies of every nature and description as to which title is vested in the State of Louisiana, together with all islands arising therein and other lands formed by accretion or by reliction, where allowed by law, excepting tax adjudicated lands, and not presently under mineral lease on September 14, 2011, situated in Concordia Parish, Louisiana, and more particularly described as follows: Beginning at a point having Coordinates of X = 2,270,000.00 and Y = 178,000.00; thence East 15,000.00 feet to a point having Coordinates of X = 2,285,000.00 and Y = 178,000.00; thence South 18,000.00 feet to a point having Coordinates of X = 2,285,000.00 and Y = 160,000.00; thence West 15,000.00 feet to a point having Coordinates of X = 2,270,000.00 and Y = 160,000.00; thence North 18,000.00 feet to the point of beginning, **LESS AND EXCEPT** any portion of the Red River Wildlife Management Area that may lie within the above described tract, containing approximately **681 acres**, all as more particularly outlined on a plat on file in the Office of Mineral Resources, Department of Natural Resources. All bearings, distances and coordinates are based on Louisiana Coordinate System of 1927, (North or South Zone), where applicable.

NOTE: The above description of the Tract nominated for lease has been provided and corrected, where required, exclusively by the nomination party. Any mineral lease selected from this Tract and awarded by the Louisiana State Mineral and Energy Board shall be without warranty of any kind, either express, implied, or statutory, including, but not limited to, the implied warranties of merchantability and fitness for a particular purpose. Should the mineral lease awarded by the Louisiana State Mineral and Energy Board be subsequently modified, cancelled or abrogated due to the existence of conflicting leases, operating agreements, private claims or other future obligations or conditions which may affect all or any portion of the leased Tract, it shall not relieve the Lessee of the obligation to pay any bonus due thereon to the Louisiana State Mineral and Energy Board, nor shall the Louisiana State Mineral and Energy Board be obligated to refund any consideration paid by the Lessor prior to such modification, cancellation, or abrogation, including, but not limited to, bonuses, rentals and royalties.

Bidder	Cash Payment	Price/ Acre	Rental	Oil	Gas	Other

Applicant: THEOPHILUS OIL, GAS & LAND SERVICES, LLC

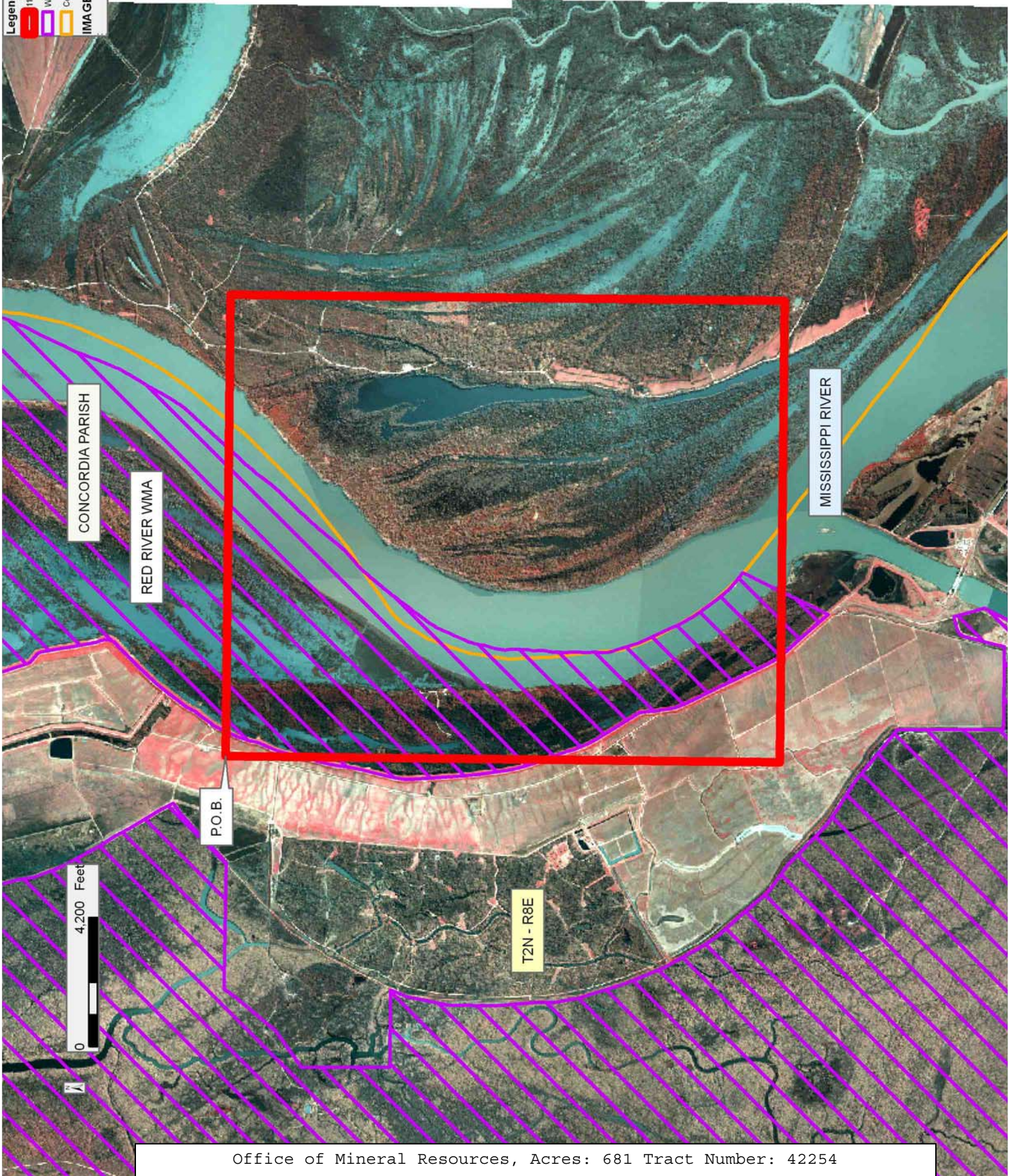
Legend

11000036

Wildlife

Counties

IMAGERY.DOQQ_2004_1M



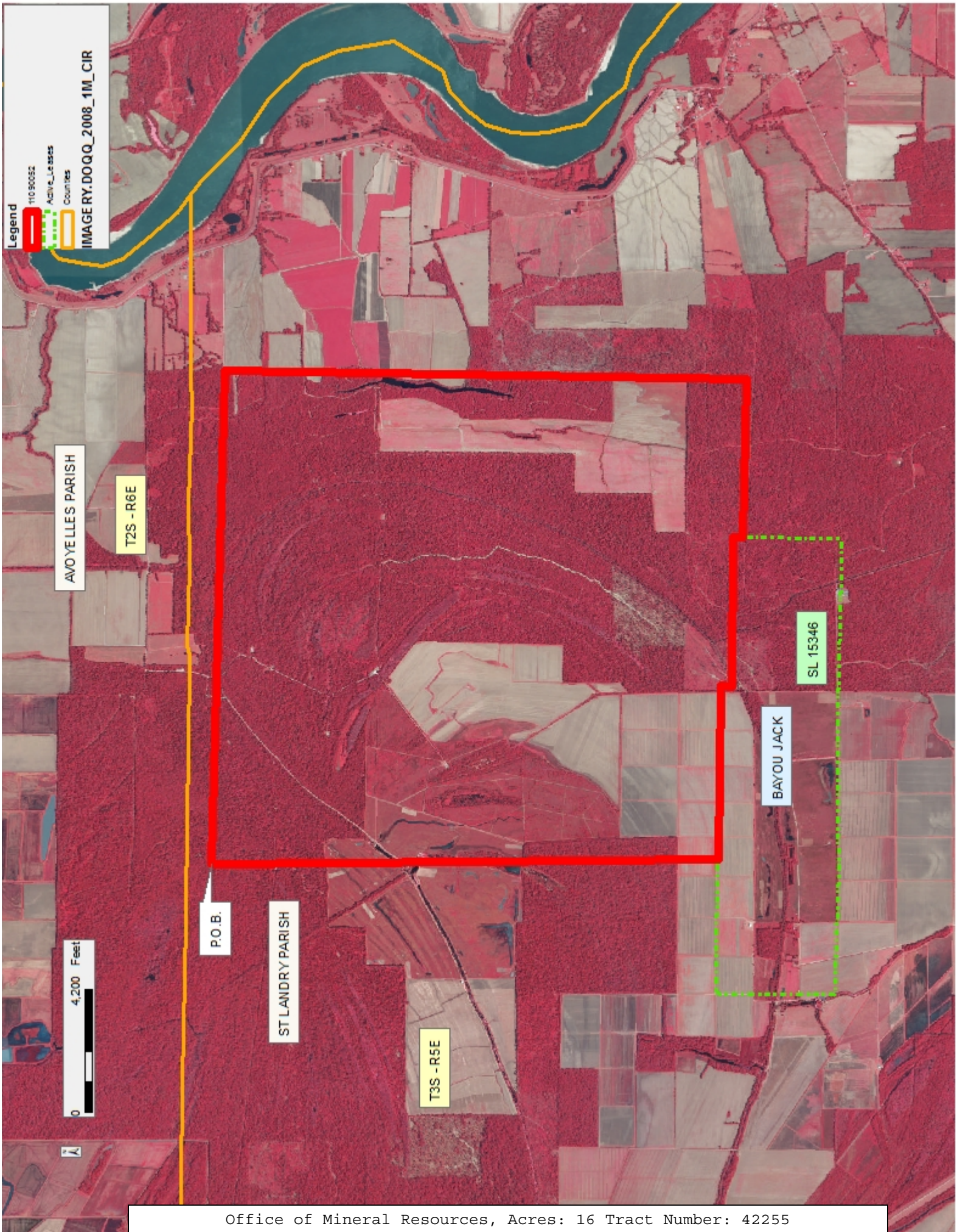
TRACT 42255 - St. Landry Parish, Louisiana

All of the lands now or formerly constituting the beds and bottoms of all water bodies of every nature and description as to which title is vested in the State of Louisiana, together with all islands arising therein and other lands formed by accretion or by reliction, where allowed by law, excepting tax adjudicated lands, and not presently under mineral lease on September 14, 2011, situated in St. Landry Parish, Louisiana, and more particularly described as follows: Beginning at a point having Coordinates of X = 1,825,829.65 and Y = 792,832.83; thence South 88 degrees 32 minutes 10 seconds East 16,943.88 feet to a point having Coordinates of X = 1,842,768.00 and Y = 792,400.00; thence South 00 degrees 58 minutes 32 seconds West 17,869.80 to a point have Coordinates X = 1,842,463.78 Y = 774,532.79; thence Westerly approximately 5,427 feet to a point on the Eastern boundary of State Lease No. 15346, as amended; thence along the boundary of said State Lease No. 15346 as follows: Northerly 327 feet, Westerly approximately 5,115 feet, Northerly 360 feet and Westerly 5,958 feet to a point on its Northern boundary; thence Northerly approximately 17,336 feet to the point of beginning, containing approximately **16 acres, LESS AND EXCEPT** that portion, if any, of State Lease No. 15346, as amended, all as more particularly outlined on a plat on file in the Office of Mineral Resources, Department of Natural Resources. All bearings, distances and coordinates are based on Louisiana Coordinate System of 1927, (North or South Zone), where applicable.

NOTE: The above description of the Tract nominated for lease has been provided and corrected, where required, exclusively by the nomination party. Any mineral lease selected from this Tract and awarded by the Louisiana State Mineral and Energy Board shall be without warranty of any kind, either express, implied, or statutory, including, but not limited to, the implied warranties of merchantability and fitness for a particular purpose. Should the mineral lease awarded by the Louisiana State Mineral and Energy Board be subsequently modified, cancelled or abrogated due to the existence of conflicting leases, operating agreements, private claims or other future obligations or conditions which may affect all or any portion of the leased Tract, it shall not relieve the Lessee of the obligation to pay any bonus due thereon to the Louisiana State Mineral and Energy Board, nor shall the Louisiana State Mineral and Energy Board be obligated to refund any consideration paid by the Lessor prior to such modification, cancellation, or abrogation, including, but not limited to, bonuses, rentals and royalties.

Applicant: BELLARD & COMPANY, INC.

Bidder	Cash Payment	Price/ Acre	Rental	Oil	Gas	Other



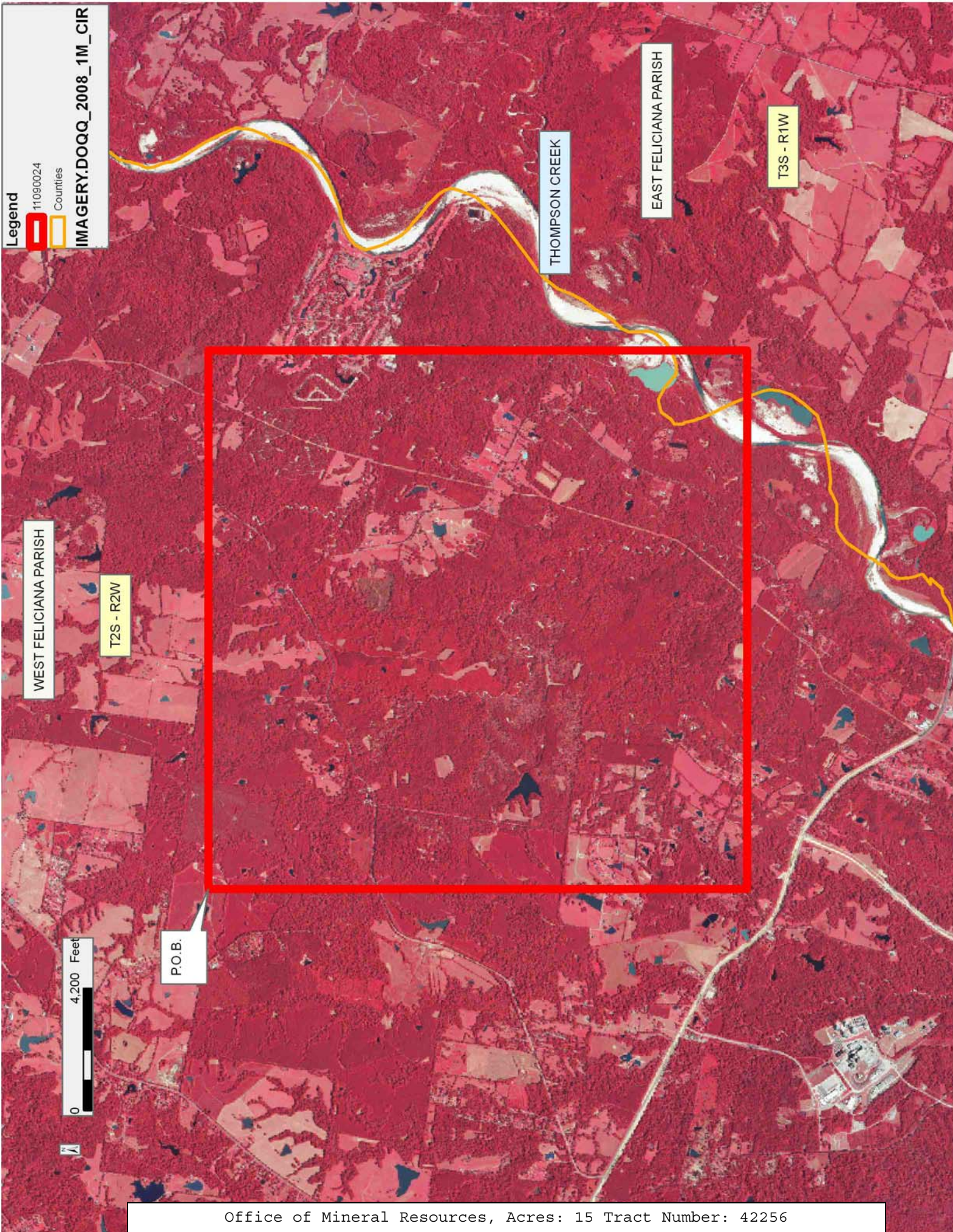
TRACT 42256 - East Feliciana and West Feliciana Parishes, Louisiana

All of the lands now or formerly constituting the beds and bottoms of all water bodies of every nature and description as to which title is vested in the State of Louisiana, together with all islands arising therein and other lands formed by accretion or by reliction, where allowed by law, excepting tax adjudicated lands, and not presently under mineral lease on September 14, 2011, situated in East Feliciana and West Feliciana Parishes, Louisiana, and more particularly described as follows: Beginning at a point having Coordinates of X = 2,006,273.00 and Y = 782,391.00; thence East 18,480.00 feet to a point having Coordinates of X = 2,024,753.00 and Y = 782,391.00; thence South 18,480.00 feet to a point having Coordinates of X = 2,024,753.00 and Y = 763,911.00; thence West 18,480.00 feet to a point having Coordinates of X = 2,006,273.00 and Y = 763,911.00; thence North 18,480.00 feet to the point of beginning, (This tract includes only waterbottoms claimed and owned by the state and specifically excludes any land which the state may claim or own and to which the mineral rights are vested in the state), containing approximately **15 acres**, all as more particularly outlined on a plat on file in the Office of Mineral Resources, Department of Natural Resources. All bearings, distances and coordinates are based on Louisiana Coordinate System of 1927, (North or South Zone), where applicable.

NOTE: The above description of the Tract nominated for lease has been provided and corrected, where required, exclusively by the nomination party. Any mineral lease selected from this Tract and awarded by the Louisiana State Mineral and Energy Board shall be without warranty of any kind, either express, implied, or statutory, including, but not limited to, the implied warranties of merchantability and fitness for a particular purpose. Should the mineral lease awarded by the Louisiana State Mineral and Energy Board be subsequently modified, cancelled or abrogated due to the existence of conflicting leases, operating agreements, private claims or other future obligations or conditions which may affect all or any portion of the leased Tract, it shall not relieve the Lessee of the obligation to pay any bonus due thereon to the Louisiana State Mineral and Energy Board, nor shall the Louisiana State Mineral and Energy Board be obligated to refund any consideration paid by the Lessor prior to such modification, cancellation, or abrogation, including, but not limited to, bonuses, rentals and royalties.

Applicant: HEMPCO ENERGY RESOURCES

Bidder	Cash Payment	Price/ Acre	Rental	Oil	Gas	Other



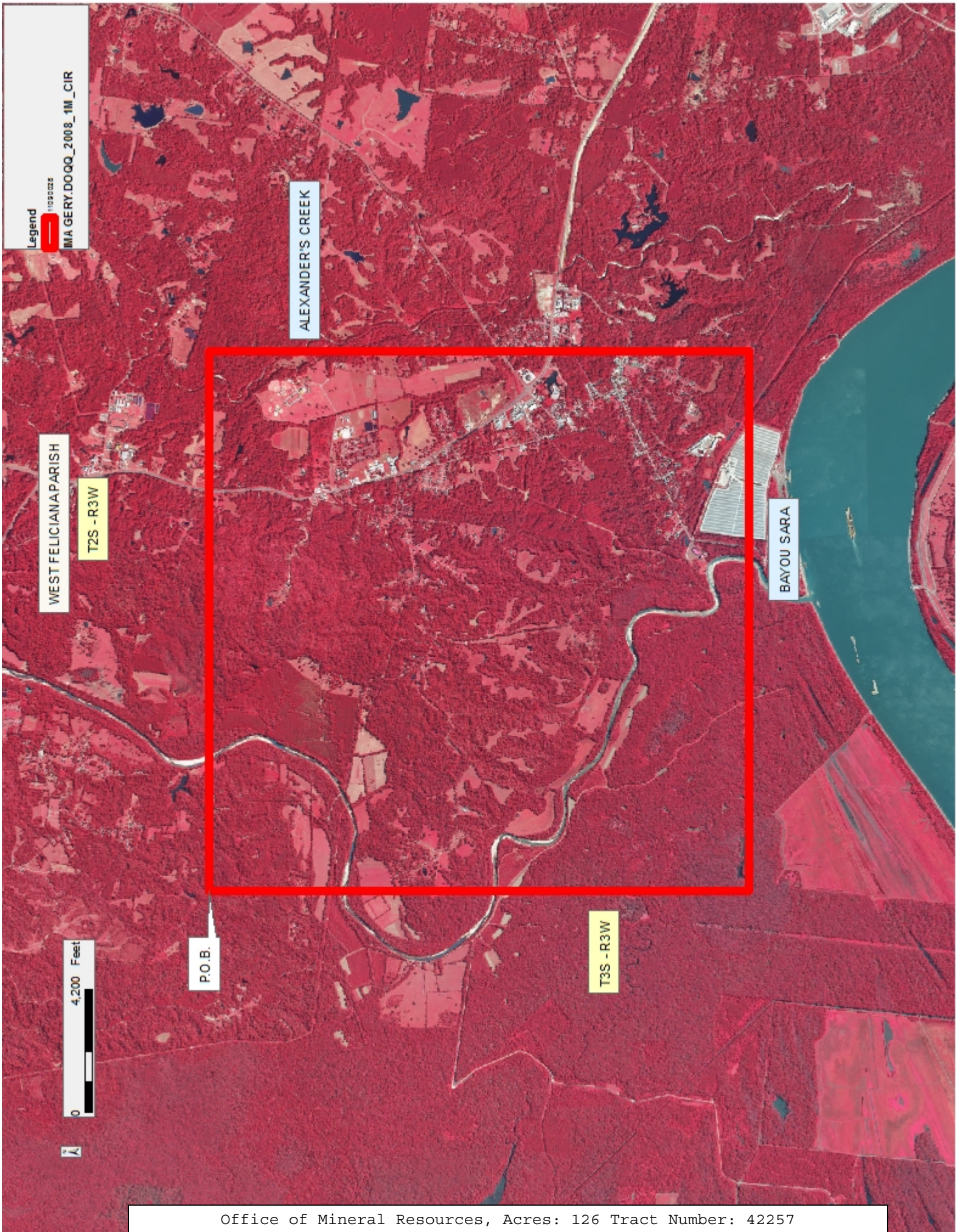
TRACT 42257 - West Feliciana Parish, Louisiana

All of the lands now or formerly constituting the beds and bottoms of all water bodies of every nature and description as to which title is vested in the State of Louisiana, together with all islands arising therein and other lands formed by accretion or by reliction, where allowed by law, excepting tax adjudicated lands, and not presently under mineral lease on September 14, 2011, situated in West Feliciana Parish, Louisiana, and more particularly described as follows: Beginning at a point having Coordinates of X = 1,969,313.00 and Y = 782,391.00; thence East 18,480.00 feet to a point having Coordinates of X = 1,987,793.00 and Y = 782,391.00; thence South 18,480.00 feet to a point having Coordinates of X = 1,987,793.00 and Y = 763,911.00; thence West 18,480.00 feet to a point having Coordinates of X = 1,969,313.00 and Y = 763,911.00; thence North 18,480.00 feet to the point of beginning, (This tract includes only waterbottoms claimed and owned by the state and specifically excludes any land which the state may claim or own and to which the mineral rights are vested in the state), containing approximately **126 acres**, all as more particularly outlined on a plat on file in the Office of Mineral Resources, Department of Natural Resources. All bearings, distances and coordinates are based on Louisiana Coordinate System of 1927, (North or South Zone), where applicable.

NOTE: The above description of the Tract nominated for lease has been provided and corrected, where required, exclusively by the nomination party. Any mineral lease selected from this Tract and awarded by the Louisiana State Mineral and Energy Board shall be without warranty of any kind, either express, implied, or statutory, including, but not limited to, the implied warranties of merchantability and fitness for a particular purpose. Should the mineral lease awarded by the Louisiana State Mineral and Energy Board be subsequently modified, cancelled or abrogated due to the existence of conflicting leases, operating agreements, private claims or other future obligations or conditions which may affect all or any portion of the leased Tract, it shall not relieve the Lessee of the obligation to pay any bonus due thereon to the Louisiana State Mineral and Energy Board, nor shall the Louisiana State Mineral and Energy Board be obligated to refund any consideration paid by the Lessor prior to such modification, cancellation, or abrogation, including, but not limited to, bonuses, rentals and royalties.

Bidder	Cash Payment	Price/ Acre	Rental	Oil	Gas	Other

Applicant: HEMPCO ENERGY RESOURCES



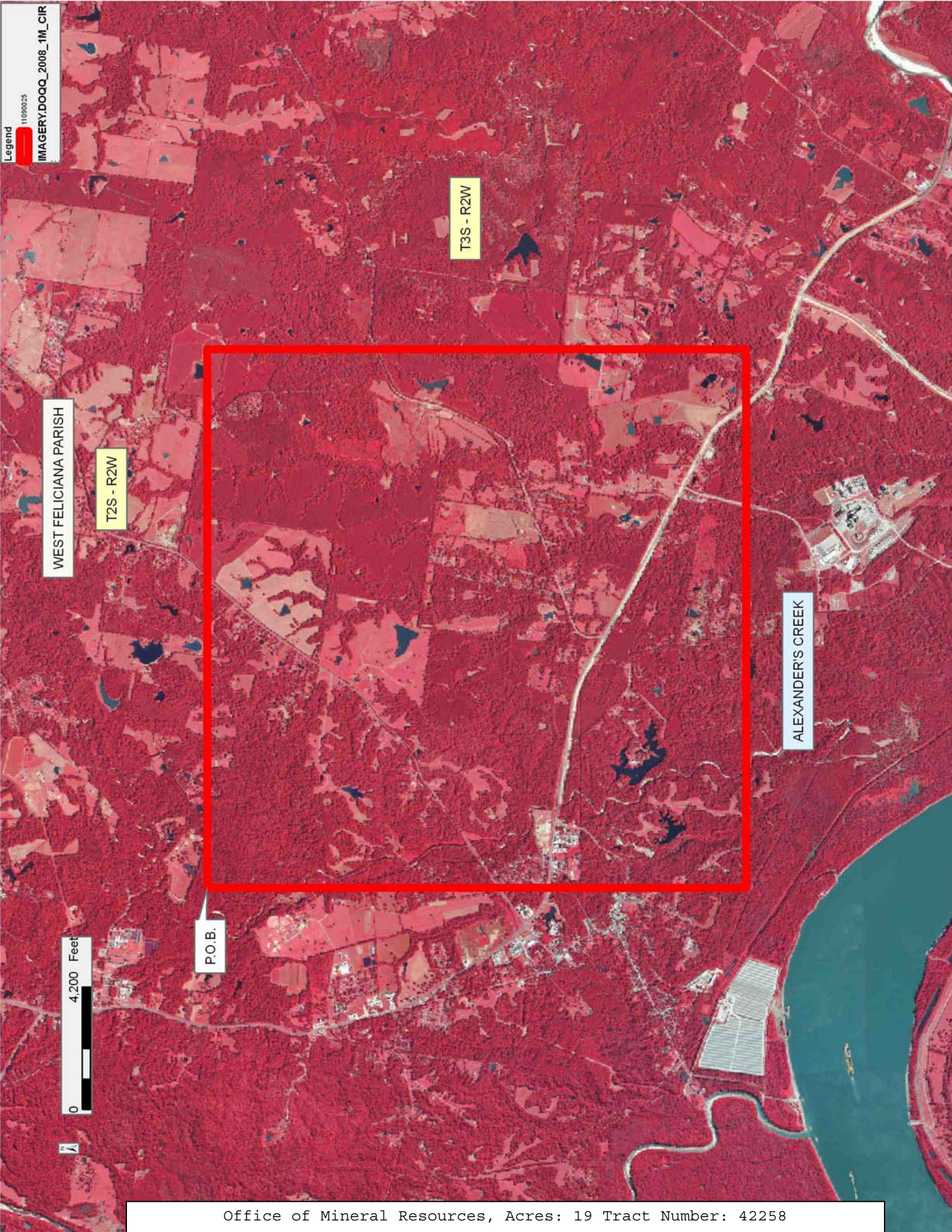
TRACT 42258 - West Feliciana Parish, Louisiana

All of the lands now or formerly constituting the beds and bottoms of all water bodies of every nature and description as to which title is vested in the State of Louisiana, together with all islands arising therein and other lands formed by accretion or by reliction, where allowed by law, excepting tax adjudicated lands, and not presently under mineral lease on September 14, 2011, situated in West Feliciana Parish, Louisiana, and more particularly described as follows: Beginning at a point having Coordinates of X = 1,987,793.00 and Y = 782,391.00; thence East 18,480.00 feet to a point having Coordinates of X = 2,006,273.00 and Y = 782,391.00; thence South 18,480.00 feet to a point having Coordinates of X = 2,006,273.00 and Y = 763,911.00; thence West 18,480.00 feet to a point having Coordinates of X = 1,987,793.00 and Y = 763,911.00; thence North 18,480.00 feet to the point of beginning, (This tract includes only waterbottoms claimed and owned by the state and specifically excludes any land which the state may claim or own and to which the mineral rights are vested in the state), containing approximately **19 acres**, all as more particularly outlined on a plat on file in the Office of Mineral Resources, Department of Natural Resources. All bearings, distances and coordinates are based on Louisiana Coordinate System of 1927, (North or South Zone), where applicable.

NOTE: The above description of the Tract nominated for lease has been provided and corrected, where required, exclusively by the nomination party. Any mineral lease selected from this Tract and awarded by the Louisiana State Mineral and Energy Board shall be without warranty of any kind, either express, implied, or statutory, including, but not limited to, the implied warranties of merchantability and fitness for a particular purpose. Should the mineral lease awarded by the Louisiana State Mineral and Energy Board be subsequently modified, cancelled or abrogated due to the existence of conflicting leases, operating agreements, private claims or other future obligations or conditions which may affect all or any portion of the leased Tract, it shall not relieve the Lessee of the obligation to pay any bonus due thereon to the Louisiana State Mineral and Energy Board, nor shall the Louisiana State Mineral and Energy Board be obligated to refund any consideration paid by the Lessor prior to such modification, cancellation, or abrogation, including, but not limited to, bonuses, rentals and royalties.

Bidder	Cash Payment	Price/ Acre	Rental	Oil	Gas	Other

Applicant: HEMPCO ENERGY RESOURCES



Legend
11090025
IMAGERY:DOQQ_2008_1M_CIR

WEST FELICIANA PARISH

T2S - R2W

T3S - R2W

ALEXANDER'S CREEK

P.O.B.

0 4,200 Feet

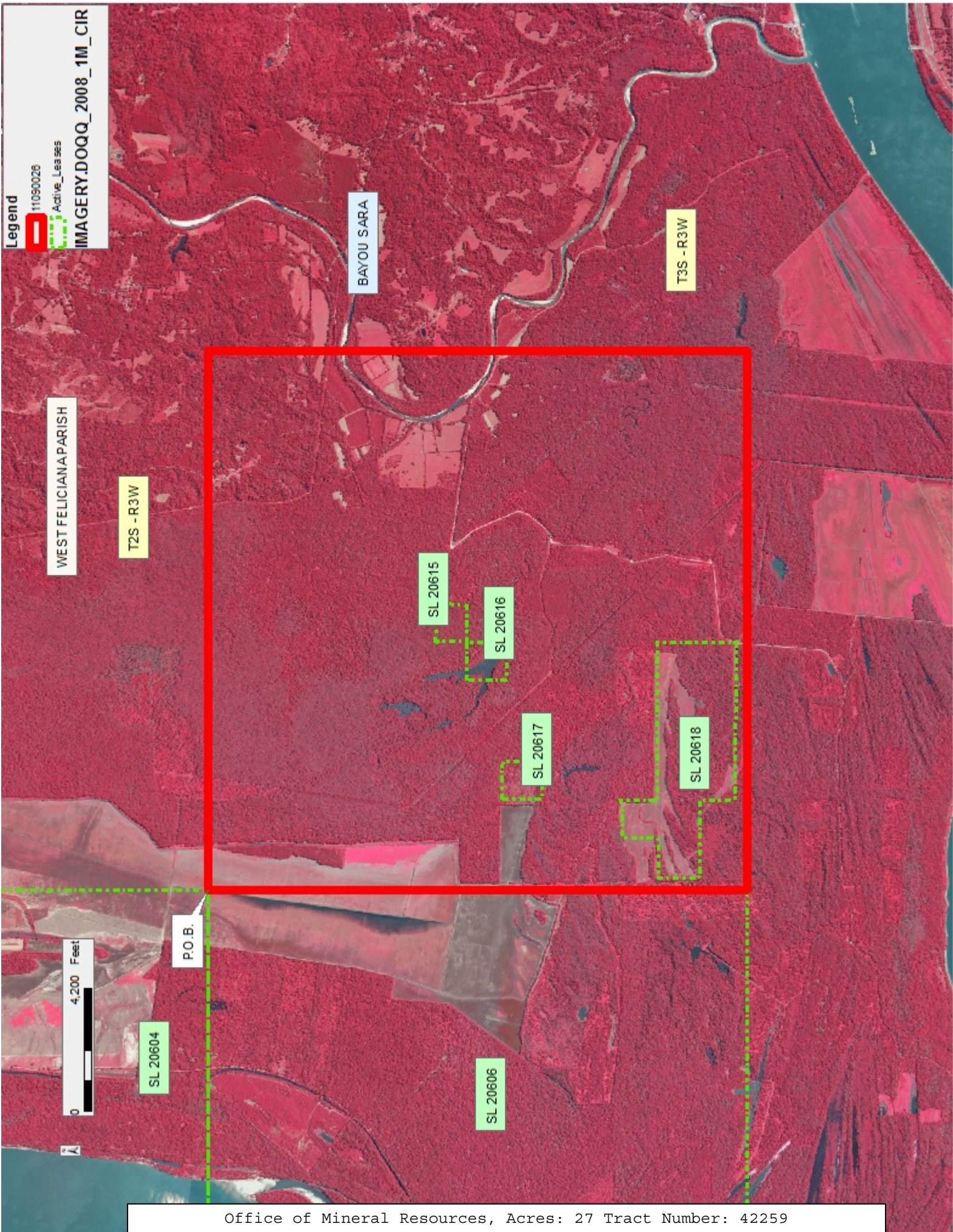
TRACT 42259 - West Feliciana Parish, Louisiana

All of the lands now or formerly constituting the beds and bottoms of all water bodies of every nature and description as to which title is vested in the State of Louisiana, together with all islands arising therein and other lands formed by accretion or by reliction, where allowed by law, excepting tax adjudicated lands, and not presently under mineral lease on September 14, 2011, situated in West Feliciana Parish, Louisiana, and more particularly described as follows: Beginning at the Northeast corner of State Lease No. 20606, also being the Southeast corner of State Lease No. 20604, having Coordinates of X = 1,950,833.00 and Y = 782,391.00; thence East 18,480.00 feet to a point having Coordinates of X = 1,969,313.00 and Y = 782,391.00; thence South 18,480.00 feet to a point having Coordinates of X = 1,969,313.00 and Y = 763,911.00; thence West 18,480.00 feet to the Southeast corner of said State Lease No. 20606 having Coordinates of X = 1,950,833.00 and Y = 763,911.00; thence North 18,480.00 feet along the East boundary of said State Lease No. 20606 to the point of beginning, (This tract includes only waterbottoms claimed and owned by the state and specifically excludes any land which the state may claim or own and to which the mineral rights are vested in the state), containing approximately **27 acres**, all as more particularly outlined on a plat on file in the Office of Mineral Resources, Department of Natural Resources. All bearings, distances and coordinates are based on Louisiana Coordinate System of 1927, (North or South Zone), where applicable.

NOTE: The above description of the Tract nominated for lease has been provided and corrected, where required, exclusively by the nomination party. Any mineral lease selected from this Tract and awarded by the Louisiana State Mineral and Energy Board shall be without warranty of any kind, either express, implied, or statutory, including, but not limited to, the implied warranties of merchantability and fitness for a particular purpose. Should the mineral lease awarded by the Louisiana State Mineral and Energy Board be subsequently modified, cancelled or abrogated due to the existence of conflicting leases, operating agreements, private claims or other future obligations or conditions which may affect all or any portion of the leased Tract, it shall not relieve the Lessee of the obligation to pay any bonus due thereon to the Louisiana State Mineral and Energy Board, nor shall the Louisiana State Mineral and Energy Board be obligated to refund any consideration paid by the Lessor prior to such modification, cancellation, or abrogation, including, but not limited to, bonuses, rentals and royalties.

Applicant: HEMPCO ENERGY RESOURCES

Bidder	Cash Payment	Price/ Acre	Rental	Oil	Gas	Other



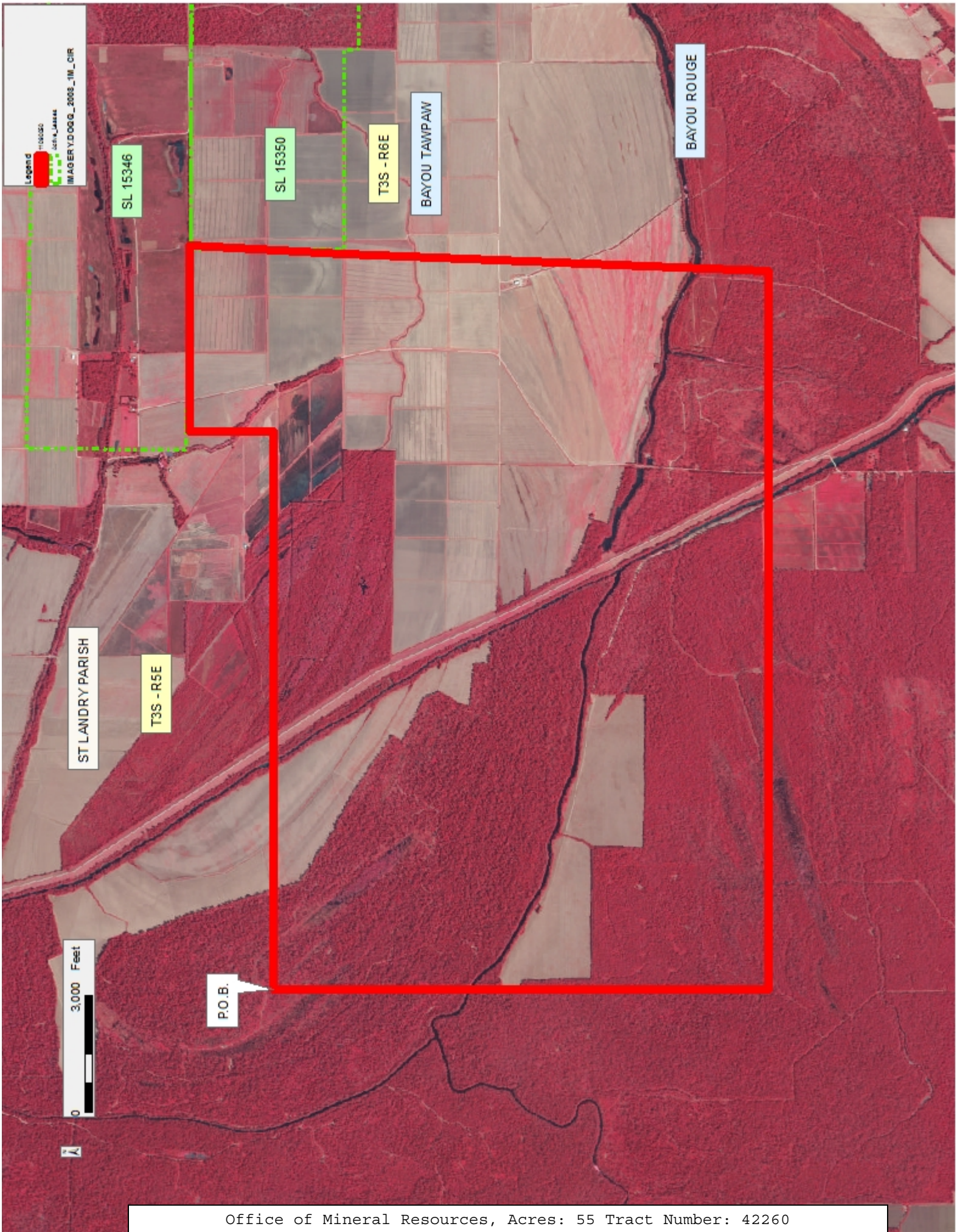
TRACT 42260 - St. Landry Parish, Louisiana

All of the lands now or formerly constituting the beds and bottoms of all water bodies of every nature and description as to which title is vested in the State of Louisiana, together with all islands arising therein and other lands formed by accretion or by reliction, where allowed by law, excepting tax adjudicated lands, and not presently under mineral lease on September 14, 2011, situated in St. Landry Parish, Louisiana, and more particularly described as follows: Beginning at a point having Coordinates of X = 1,807,481.56 and Y = 769,219.43; thence East 14,337.48 feet to a point having Coordinates of X = 1,821,749.04 and Y = 769,219.43; thence North approximately 2,268 feet to a point on the Southern boundary of State Lease No. 15346, as amended; thence Easterly approximately 4,789 feet along the Southern boundary of said State Lease No. 15346 to a point being the Northwest corner of State Lease No. 15350, as amended; thence along the boundary of said State Lease No. 15350 the following courses: Southerly approximately 3,926 feet and Easterly approximately 92 feet to a point on its Southern boundary; thence Southerly approximately 14 feet to a point of intersection with an East-West line originating from a point having Coordinates of X = 1,826,395.72 and Y = 767,409.51; thence Westerly approximately 214 feet to a point having Coordinates of X = 1,826,395.72 and Y = 767,409.51; thence South 02 degrees 16 minutes 57 seconds West 10,901.16 feet to a point having Coordinates of X = 1,825,961.56 and Y = 756,517.00; thence West 18,480.00 feet to a point having Coordinates of X = 1,807,481.56 and Y = 756,517.00; thence North 12,705.16 feet to the point of beginning, containing approximately **55 acres, LESS AND EXCEPT** that portion, if any of State Lease No. 15346, as amended and State Lease No. 15350, as amended, all as more particularly outlined on a plat on file in the Office of Mineral Resources, Department of Natural Resources. All bearings, distances and coordinates are based on Louisiana Coordinate System of 1927, (North or South Zone), where applicable.

NOTE: The above description of the Tract nominated for lease has been provided and corrected, where required, exclusively by the nomination party. Any mineral lease selected from this Tract and awarded by the Louisiana State Mineral and Energy Board shall be without warranty of any kind, either express, implied, or statutory, including, but not limited to, the implied warranties of merchantability and fitness for a particular purpose. Should the mineral lease awarded by the Louisiana State Mineral and Energy Board be subsequently modified, cancelled or abrogated due to the existence of conflicting leases, operating agreements, private claims or other future obligations or conditions which may affect all or any portion of the leased Tract, it shall not relieve the Lessee of the obligation to pay any bonus due thereon to the Louisiana State Mineral and Energy Board, nor shall the Louisiana State Mineral and Energy Board be obligated to refund any consideration paid by the Lessor prior to such modification, cancellation, or abrogation, including, but not limited to, bonuses, rentals and royalties.

Applicant: BELLARD & COMPANY, INC.

Bidder	Cash Payment	Price/ Acre	Rental	Oil	Gas	Other



TRACT 42261 - St. Landry Parish, Louisiana

All of the lands now or formerly constituting the beds and bottoms of all water bodies of every nature and description as to which title is vested in the State of Louisiana, together with all islands arising therein and other lands formed by accretion or by reliction, where allowed by law, excepting tax adjudicated lands, and not presently under mineral lease on September 14, 2011, situated in St. Landry Parish, Louisiana, and more particularly described as follows: Beginning at a point having Coordinates of X = 1,789,001.56 and Y = 769,589.26; thence East 10,422.12 feet to a point having Coordinates of X = 1,799,423.68 and Y = 769,589.26; thence South 84 degrees 30 minutes 23 seconds East 3,863.10 feet to a point have Coordinates X = 1,803,269.04 and Y = 769,219.43; thence East 4,212.52 feet to a point having Coordinates of X = 1,807,481.56 and Y = 769,219.43; thence South 12,702.43 feet to a point having Coordinates of X = 1,807,481.56 and Y = 756,517.00; thence West 18,480.00 feet to a point having Coordinates of X = 1,789,001.56 and Y = 756,517.00; thence North 13,072.26 feet to the point of beginning, containing approximately **90 acres**, all as more particularly outlined on a plat on file in the Office of Mineral Resources, Department of Natural Resources. All bearings, distances and coordinates are based on Louisiana Coordinate System of 1927, (North or South Zone), where applicable.

NOTE: The above description of the Tract nominated for lease has been provided and corrected, where required, exclusively by the nomination party. Any mineral lease selected from this Tract and awarded by the Louisiana State Mineral and Energy Board shall be without warranty of any kind, either express, implied, or statutory, including, but not limited to, the implied warranties of merchantability and fitness for a particular purpose. Should the mineral lease awarded by the Louisiana State Mineral and Energy Board be subsequently modified, cancelled or abrogated due to the existence of conflicting leases, operating agreements, private claims or other future obligations or conditions which may affect all or any portion of the leased Tract, it shall not relieve the Lessee of the obligation to pay any bonus due thereon to the Louisiana State Mineral and Energy Board, nor shall the Louisiana State Mineral and Energy Board be obligated to refund any consideration paid by the Lessor prior to such modification, cancellation, or abrogation, including, but not limited to, bonuses, rentals and royalties.

Applicant: BELLARD & COMPANY, INC.

Bidder	Cash Payment	Price/ Acre	Rental	Oil	Gas	Other

