

TRACT 42291 - St. Mary Parish, Louisiana

A portion of all lands located above the mean high water mark, together with lands now or formerly constituting the beds and bottoms of any water body of whatever description or nature belonging to the State of Louisiana which is now located within the boundaries of the Atchafalaya Delta Wildlife Management Area and not presently under mineral lease by the State of Louisiana on September 14, 2011, and more particularly located as follows: Beginning at a point lying within the boundaries of the Atchafalaya Delta Wildlife Management Area, said point located on the East boundary of State Lease No. 340, as amended having Coordinates of X = 1,937,272.72 and Y = 276,552.63; thence South 60 degrees 29 minutes 57 seconds East 9,964.74 feet to a point on the West boundary of State Lease No. 20530 having Coordinates of X = 1,945,945.53 and Y = 271,645.64; thence along the West boundary of said State Lease No. 20530 the following courses and distances: South 34 degrees 39 minutes 15 seconds West 1,147.05 feet to a corner having Coordinates of X = 1,945,293.29 and Y = 270,702.08 and South 17 degrees 23 minutes 50 seconds West 3,656.87 feet to its Southwest corner, also being the Northwest corner of State Lease No. 20531 having Coordinates of X = 1,944,199.91 and Y = 267,212.50; thence along the West boundary of said State Lease No. 20531 the following courses and distances: South 52 degrees 28 minutes 36 seconds West 1,872.89 feet to a corner having Coordinates of X = 1,942,714.51 and Y = 266,071.75 and South 63 degrees 55 minutes 11 seconds West 1,259.32 feet to its Southwest corner, said point also being a corner on the Northerly boundary of State Lease No. 20534 having Coordinates of X = 1,941,583.41 and Y = 265,518.11; thence along the Northerly and West boundary of said State Lease No. 20534 the following courses and distances: South 63 degrees 55 minutes 11 seconds West 83.90 feet to corner having Coordinates of X = 1,941,508.06 and Y = 265,481.23, South 71 degrees 08 minutes 36 seconds West 1,112.28 feet to a corner having Coordinates of X = 1,940,455.48 and Y = 265,121.74 and South 01 degrees 18 minutes 11 seconds West 1,574.63 feet to the Northeast corner of State Lease No. 20533 having Coordinates of X = 1,940,419.67 and Y = 263,547.52; thence along the North boundary of said State Lease No. 20533 the following courses and distances: North 57 degrees 44 minutes 07 seconds West 3,691.41 feet to a corner having Coordinates of X = 1,937,298.26 and Y = 265,518.11 and West 51.22 feet to its Northwest corner located on the East boundary of said State Lease No. 340 having Coordinates of X = 1,937,247.04 and Y = 265,518.11; thence North 00 degree 08 minutes 00 second East 11,034.55 feet along the East boundary of said State Lease No. 340 to the point of beginning, containing approximately **1,572.05 acres**, all as more particularly outlined on a plat on file in the Office of Mineral Resources, Department of Natural Resources. All bearings, distances and coordinates are based on Louisiana Coordinate System of 1927, (South Zone).

NOTE: The above description of the Tract nominated for lease has been provided and corrected, where required, exclusively by the nomination party. Any mineral lease selected from this Tract and awarded by the

Louisiana State Mineral and Energy Board shall be without warranty of any kind, either express, implied, or statutory, including, but not limited to, the implied warranties of merchantability and fitness for a particular purpose. Should the mineral lease awarded by the Louisiana State Mineral and Energy Board be subsequently modified, cancelled or abrogated due to the existence of conflicting leases, operating agreements, private claims or other future obligations or conditions which may affect all or any portion of the leased Tract, it shall not relieve the Lessee of the obligation to pay any bonus due thereon to the Louisiana State Mineral and Energy Board, nor shall the Louisiana State Mineral and Energy Board be obligated to refund any consideration paid by the Lessor prior to such modification, cancellation, or abrogation, including, but not limited to, bonuses, rentals and royalties.

NOTE: The mineral lease is located in the Atchafalaya Delta WMA under the jurisdiction of the Louisiana Department of Wildlife and Fisheries which has promulgated rules and regulations for the protection of game and wildlife on the aforesaid Tract and, therefore, shall be subject to said rules and regulations, a copy of which shall be attached to the mineral leases. In addition to the specific rules and regulations applicable, the following shall apply regarding operations under this mineral lease:

- No activities will be allowed without written authorization of the Louisiana Department of Wildlife and Fisheries.
- Proposed projects will be evaluated on a case by case basis. Modifications to proposed project features including but not limited to access routes, spoil placement, well sites, flowlines and appurtenant structures may be required by the Department of Wildlife and Fisheries.
- Compliance with the Atchafalaya Delta WMA regulations will be required unless otherwise specified by the Department of Wildlife and Fisheries.
- Compensatory mitigation will be required to offset unavoidable wetland impacts.
- Compensation and/or oyster seed ground surveys may be required by the Department for potential impacts to productive oyster seed grounds located within the management area.
- Removal of all structures, facilities and equipment will be required within 120 days of abandonment unless otherwise agreed to in writing by the Louisiana Department of Wildlife and Fisheries.
- No activities will be allowed during the hunting season unless approved by the Department.
- This tract is located within the emerging Atchafalaya Delta. No activities will be allowed on emergent islands or vegetated wetlands. The Louisiana Department of Wildlife and Fisheries (LDWF) shall have discretion to determine access routes. In the event that LDWF approves of dredging for access, LDWF shall have discretion to require hydraulic or spray dredging to reduce environmental impacts.

- Prior to submitting application for wetland permits to Federal and State permitting agencies the leaseholder shall coordinate project details with the Department of Wildlife and Fisheries. Contact person for the Department will be Mike Windham at (504)284-5268.

Additionally, the Department will require a minimum bonus of \$350.00 per acre and a minimum royalty of 25%.

NOTE: The above described tract may be in the vicinity of existing shell reefs where drilling and dredging operations must be conducted in strict conformity with the regulations adopted by the Louisiana Department of Wildlife and Fisheries and/or the U.S. Corps of Engineers, U.S. Army.

NOTE: The State of Louisiana does hereby reserve, and this lease shall be subject to, the imprescriptible right of surface use in the nature of a servitude in favor of the Department of Natural Resources, including its Offices and Commissions, for the sole purpose of implementing, constructing, servicing and maintaining approved coastal zone management and/or restoration projects. Utilization of any and all rights derived under this lease by the mineral lessee, its agents, successors or assigns, shall not interfere with nor hinder the reasonable surface use by the Department of Natural Resources, its Offices or Commissions, as herein above reserved.

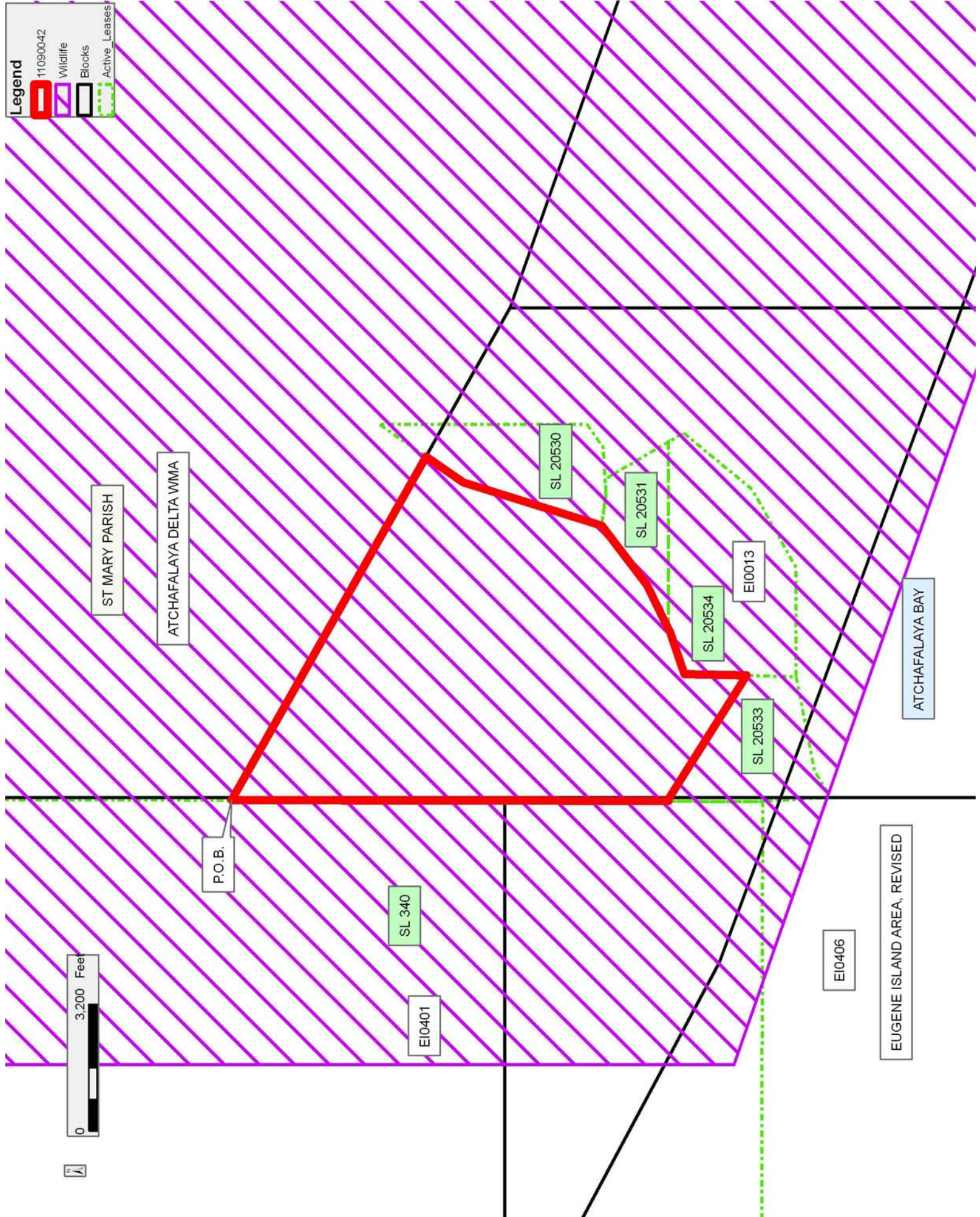
NOTE: This tract is located in an area designated by the Louisiana Legislature or the Wildlife and Fisheries Commission as a Public Oyster Seed Ground, Reservation, or area of Calcasieu or Sabine Lake. Proposed projects occurring in these areas will be evaluated on a case by case basis by Louisiana Department of Wildlife & Fisheries. Modifications to proposed project features including, but not limited to, access routes, well sites, flowlines, and appurtenant structures maybe required by the Louisiana Department of Wildlife and Fisheries. In addition, compensatory mitigation will be required to offset unavoidable habitat impacts.

Applicant: THEOPHILUS OIL, GAS & LAND SERVICES, LLC

Bidder	Cash Payment	Price/Acre	Rental	Oil	Gas	Other

Legend

- 11090042
- Wildlife
- Blocks
- Active_Leases



TRACT 42292 - St. Mary Parish, Louisiana

A portion of all lands located above the mean high water mark, together with lands now or formerly constituting the beds and bottoms of any water body of whatever description or nature belonging to the State of Louisiana which is now located within the boundaries of the Atchafalaya Delta Wildlife Management Area and not presently under mineral lease by the State of Louisiana on September 14, 2011, and more particularly located as follows: Beginning at a point within the Atchafalaya Delta Wildlife Management Area, also being the Northeast corner of State Lease No. 20531, said point also located on the South boundary of State Lease No. 20530 having Coordinates of X = 1,945,376.19 and Y = 267,121.90; thence along the South boundary of said State Lease No. 20530 the following courses and distances: North 86 degrees 10 minutes 24 seconds East 811.20 feet to a corner having Coordinates of X = 1,946,185.58 and Y = 267,176.04 and North 54 degrees 46 minutes 57 seconds East 705.56 feet to its Southeast corner, also being the Southwest corner of State Lease No. 20529 having Coordinates of X = 1,946,762.00 and Y = 267,582.92; thence along the South boundary of said State Lease No. 20529 the following courses and distances: North 54 degrees 46 minutes 57 seconds East 2,491.61 feet to a corner having Coordinates of X = 1,948,797.56 and Y = 269,019.79, South 76 degrees 03 minutes 00 second East 6,286.99 feet to a corner having Coordinates of X = 1,954,899.13 and Y = 267,504.16 and North 69 degrees 07 minutes 19 seconds East 274.27 feet to a point having Coordinates of X = 1,955,155.39 and Y = 267,601.91; thence South 70 degrees 36 minutes 49 seconds East 6,489.32 feet to a corner having Coordinates of X = 1,961,276.78 and Y = 265,447.87; thence South 6,757.87 feet to a point having Coordinates of X = 1,961,276.78 and Y = 258,690.00; thence West 11,276.78 feet to a point having Coordinates of X = 1,950,000.00 and Y = 258,690.00; thence North 510.00 feet to the South corner of State Lease No. 20224 having Coordinates of X = 1,950,000.00 and Y = 259,200.00; thence North 36 degrees 15 minutes 14 seconds East 1,617.81 feet along the Eastern boundary of said State Lease No. 20224 to its most East corner, also being the Southeast corner of State Lease No. 20223 having Coordinates of X = 1,950,956.72 and Y = 260,504.61; thence along the boundary of said State Lease No. 20223 the following courses and distances: North 36 degrees 15 minutes 14 seconds East 3,962.51 feet to a corner having Coordinates of X = 1,953,300.00 and Y = 263,700.00, North 55 degrees 18 minutes 17 seconds West 1,581.14 to a corner having Coordinates of X = 1,952,000.00 and Y = 264,600.00, South 45 degrees 00 minute 00 seconds West 2,404.16 feet to a corner having Coordinates of X = 1,950,300.00 and Y = 262,900.00, South 26 degrees 33 minutes 54 seconds East 447.21 feet to a corner having Coordinates of X = 1,950,500.00 and Y = 262,500.00 and South 41 degrees 25 minutes 25 seconds West 1,727.79 feet to its Southeast corner, also being the North corner of said State Lease No. 20224 having Coordinates of X = 1,949,356.86 and Y = 261,204.44; thence North 11 degrees 19 minutes 24 seconds West 476.35 feet to the East corner of State Lease No. 20532 having Coordinates of X = 1,949,263.33 and Y = 261,671.52; thence North 38 degrees 07 minutes 53 seconds West 4,412.11 feet along the boundary of said State Lease No. 20532 to its

North corner, said point located on the East boundary of State Lease No. 20534 having Coordinates of X = 1,946,539.00 and Y = 265,142.08; thence North 30 degrees 25 minutes 37 seconds West 436.10 along the East boundary of said State Lease No. 20534 to its Northeast corner, also being the Southeast corner of said State Lease No. 20531 having Coordinates of X = 1,946,318.15 and Y = 265,518.11; thence North 30 degrees 25 minutes 37 seconds West 1,859.95 feet along the East boundary of said State Lease No. 20531 to the point of beginning, containing approximately **2,499.77 acres**, all as more particularly outlined on a plat on file in the Office of Mineral Resources, Department of Natural Resources. All bearings, distances and coordinates are based on Louisiana Coordinate System of 1927, (South Zone).

NOTE: The above description of the Tract nominated for lease has been provided and corrected, where required, exclusively by the nomination party. Any mineral lease selected from this Tract and awarded by the Louisiana State Mineral and Energy Board shall be without warranty of any kind, either express, implied, or statutory, including, but not limited to, the implied warranties of merchantability and fitness for a particular purpose. Should the mineral lease awarded by the Louisiana State Mineral and Energy Board be subsequently modified, cancelled or abrogated due to the existence of conflicting leases, operating agreements, private claims or other future obligations or conditions which may affect all or any portion of the leased Tract, it shall not relieve the Lessee of the obligation to pay any bonus due thereon to the Louisiana State Mineral and Energy Board, nor shall the Louisiana State Mineral and Energy Board be obligated to refund any consideration paid by the Lessor prior to such modification, cancellation, or abrogation, including, but not limited to, bonuses, rentals and royalties.

NOTE: The mineral lease is located in the Atchafalaya Delta WMA under the jurisdiction of the Louisiana Department of Wildlife and Fisheries which has promulgated rules and regulations for the protection of game and wildlife on the aforesaid Tract and, therefore, shall be subject to said rules and regulations, a copy of which shall be attached to the mineral leases. In addition to the specific rules and regulations applicable, the following shall apply regarding operations under this mineral lease:

- No activities will be allowed without written authorization of the Louisiana Department of Wildlife and Fisheries.
- Proposed projects will be evaluated on a case by case basis. Modifications to proposed project features including but not limited to access routes, spoil placement, well sites, flowlines and appurtenant structures may be required by the Department of Wildlife and Fisheries.
- Compliance with the Atchafalaya Delta WMA regulations will be required unless otherwise specified by the Department of Wildlife and Fisheries.

- Compensatory mitigation will be required to offset unavoidable wetland impacts.
- Compensation and/or oyster seed ground surveys may be required by the Department for potential impacts to productive oyster seed grounds located within the management area.
- Removal of all structures, facilities and equipment will be required within 120 days of abandonment unless otherwise agreed to in writing by the Louisiana Department of Wildlife and Fisheries.
- No activities will be allowed during the hunting season unless approved by the Department.
- This tract is located within the emerging Atchafalaya Delta. No activities will be allowed on emergent islands or vegetated wetlands. The Louisiana Department of Wildlife and Fisheries (LDWF) shall have discretion to determine access routes. In the event that LDWF approves of dredging for access, LDWF shall have discretion to require hydraulic or spray dredging to reduce environmental impacts.
- Prior to submitting application for wetland permits to Federal and State permitting agencies the leaseholder shall coordinate project details with the Department of Wildlife and Fisheries. Contact person for the Department will be Mike Windham at (504)284-5268.

Additionally, the Department will require a minimum bonus of \$350.00 per acre and a minimum royalty of 25%.

NOTE: The above described tract may be in the vicinity of existing shell reefs where drilling and dredging operations must be conducted in strict conformity with the regulations adopted by the Louisiana Department of Wildlife and Fisheries and/or the U.S. Corps of Engineers, U.S. Army.

NOTE: The State of Louisiana does hereby reserve, and this lease shall be subject to, the imprescriptible right of surface use in the nature of a servitude in favor of the Department of Natural Resources, including its Offices and Commissions, for the sole purpose of implementing, constructing, servicing and maintaining approved coastal zone management and/or restoration projects. Utilization of any and all rights derived under this lease by the mineral lessee, its agents, successors or assigns, shall not interfere with nor hinder the reasonable surface use by the Department of Natural Resources, its Offices or Commissions, as herein above reserved.

NOTE: This tract is located in an area designated by the Louisiana Legislature or the Wildlife and Fisheries Commission as a Public Oyster Seed Ground, Reservation, or area of Calcasieu or Sabine Lake. Proposed projects occurring in these areas will be evaluated on a case by case basis by Louisiana Department of Wildlife & Fisheries. Modifications to proposed project features including, but not limited to, access routes, well sites, flowlines, and appurtenant structures maybe required by the

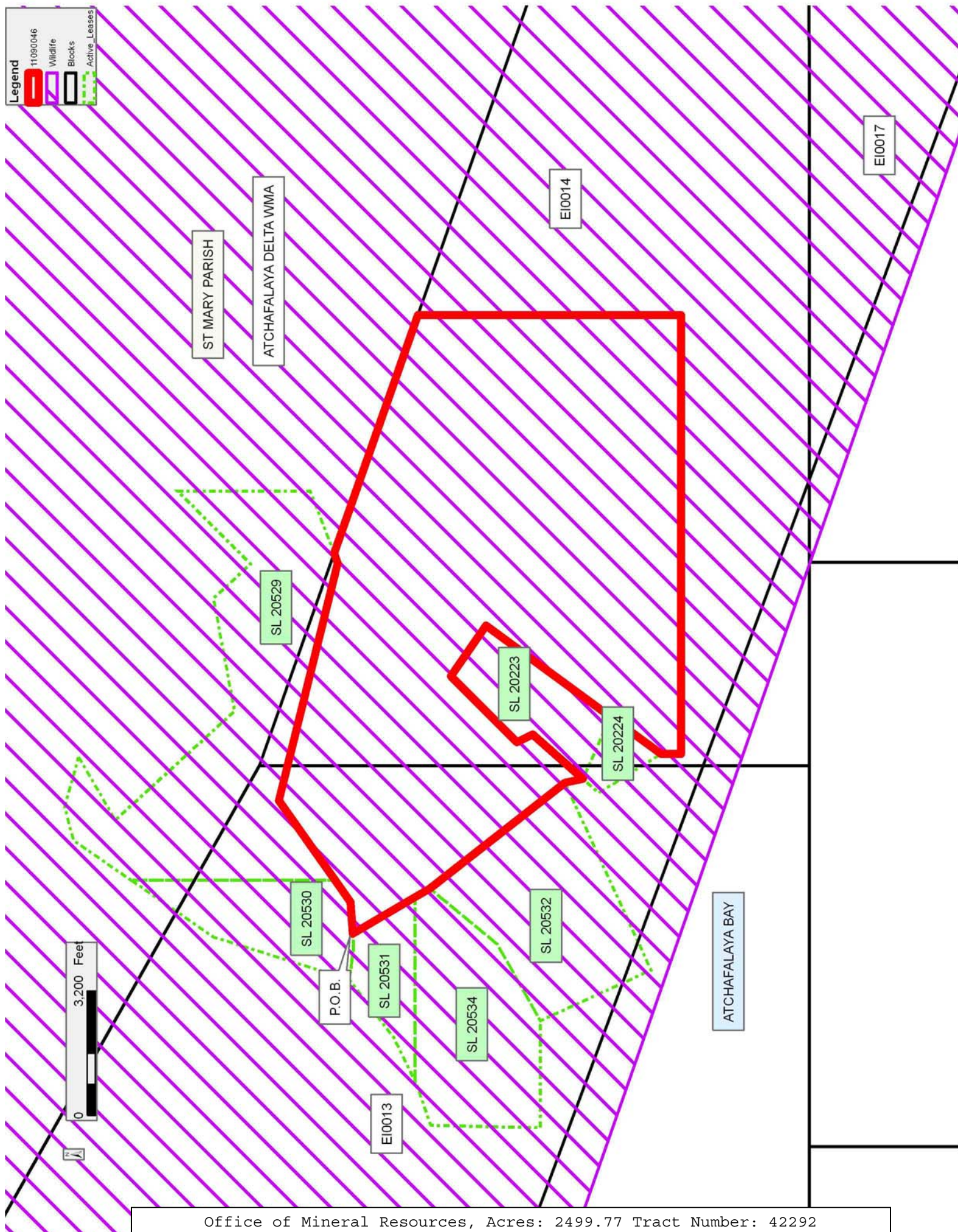
Louisiana Department of Wildlife and Fisheries. In addition, compensatory mitigation will be required to offset unavoidable habitat impacts.

Applicant: THEOPHILUS OIL, GAS & LAND SERVICES, LLC

Bidder	Cash Payment	Price/Acre	Rental	Oil	Gas	Other

Legend

- 11090046
- Wildlife
- Blocks
- Active_Leases



TRACT 42293 - St. Mary Parish, Louisiana

A portion of all lands located above the mean high water mark, together with lands now or formerly constituting the beds and bottoms of any water body of whatever description or nature belonging to the State of Louisiana which is now located within the boundaries of the Atchafalaya Delta Wildlife Management Area and not presently under mineral lease by the State of Louisiana on September 14, 2011, and more particularly located as follows: Beginning at the Northwest corner of State Lease No. 20535 located on the South boundary of State Lease No. 340, as amended, said point lying within Block 406, Eugene Island Area, Revised having Coordinates of X = 1,935,626.24 and Y = 263,145.73; thence South 06 degrees 14 minutes 56 seconds East approximately 1,082.90 feet along the West boundary of said State Lease No. 20535 to its Southwest corner located on the Southern boundary of the Atchafalaya Delta Wildlife Management Area having Coordinates of X = 1,935,744.11 and Y = 262,069.26; thence North 70 degrees 45 minutes 07 seconds West approximately 3,286.46 feet along the said Southern boundary to a point on the South boundary of said State Lease No. 340 having Coordinates of X = 1,932,641.37 and Y = 263,152.68; thence South 89 degrees 52 minutes 00 seconds East approximately 2,984.88 feet along the South boundary of said State Lease No. 340 to the point of beginning, containing approximately **36.87 acres**, all as more particularly outlined on a plat on file in the Office of Mineral Resources, Department of Natural Resources. All bearings, distances and coordinates are based on Louisiana Coordinate System of 1927, (South Zone).

NOTE: The above description of the Tract nominated for lease has been provided and corrected, where required, exclusively by the nomination party. Any mineral lease selected from this Tract and awarded by the Louisiana State Mineral and Energy Board shall be without warranty of any kind, either express, implied, or statutory, including, but not limited to, the implied warranties of merchantability and fitness for a particular purpose. Should the mineral lease awarded by the Louisiana State Mineral and Energy Board be subsequently modified, cancelled or abrogated due to the existence of conflicting leases, operating agreements, private claims or other future obligations or conditions which may affect all or any portion of the leased Tract, it shall not relieve the Lessee of the obligation to pay any bonus due thereon to the Louisiana State Mineral and Energy Board, nor shall the Louisiana State Mineral and Energy Board be obligated to refund any consideration paid by the Lessor prior to such modification, cancellation, or abrogation, including, but not limited to, bonuses, rentals and royalties.

NOTE: The mineral lease is located in the Atchafalaya Delta WMA under the jurisdiction of the Louisiana Department of Wildlife and Fisheries which has promulgated rules and regulations for the protection of game and wildlife on the aforesaid Tract and, therefore, shall be subject to said rules and regulations, a copy of which shall be attached to the mineral

leases. In addition to the specific rules and regulations applicable, the following shall apply regarding operations under this mineral lease:

- No activities will be allowed without written authorization of the Louisiana Department of Wildlife and Fisheries.
- Proposed projects will be evaluated on a case by case basis. Modifications to proposed project features including but not limited to access routes, spoil placement, well sites, flowlines and appurtenant structures may be required by the Department of Wildlife and Fisheries.
- Compliance with the Atchafalaya Delta WMA regulations will be required unless otherwise specified by the Department of Wildlife and Fisheries.
- Compensatory mitigation will be required to offset unavoidable wetland impacts.
- Compensation and/or oyster seed ground surveys may be required by the Department for potential impacts to productive oyster seed grounds located within the management area.
- Removal of all structures, facilities and equipment will be required within 120 days of abandonment unless otherwise agreed to in writing by the Louisiana Department of Wildlife and Fisheries.
- No activities will be allowed during the hunting season unless approved by the Department.
- This tract is located within the emerging Atchafalaya Delta. No activities will be allowed on emergent islands or vegetated wetlands. The Louisiana Department of Wildlife and Fisheries (LDWF) shall have discretion to determine access routes. In the event that LDWF approves of dredging for access, LDWF shall have discretion to require hydraulic or spray dredging to reduce environmental impacts.
- Prior to submitting application for wetland permits to Federal and State permitting agencies the leaseholder shall coordinate project details with the Department of Wildlife and Fisheries. Contact person for the Department will be Mike Windham at (504)284-5268.

Additionally, the Department will require a minimum bonus of \$350.00 per acre and a minimum royalty of 25%.

NOTE: The acreage contained herein, being a portion of State Lease 335, 340 or 341, was subject to the litigation between Texaco, Inc. and the State of Louisiana which resulted in the Global Settlement Agreement compromise whereby this acreage was reassigned through various mesne conveyances to the successors of William T. Burton, the original lessee of said leases from the State, (hereinafter otherwise referred to as the "ORRO's) and approved by the State Mineral and Energy Board, becoming effective April 25, 1994. Under separate agreement by and between the State and the ORRO's, certain obligations were to be met within a

specified time frame or the ORRO's became obligated to release the reassigned acreage back to the State. The obligations were not met within the specified time frame and the State began securing the releases for the acreage contained herein. Due to the extremely large number of ORRO's, their nationwide and worldwide dispersal, the unreliability of available contact information and/or a present inability to obtain full, requisite cooperation, the State has, as yet, not secured releases from certain ORRO's representing approximately a .0258336 interest in this acreage. Accordingly, although the State is diligently pursuing the requisite releases affecting this acreage (the furnishing of which the ORRO's representing the stated decimal interest are obligated), nevertheless, a party obtaining a mineral lease from the State of Louisiana on the acreage contained herein shall do so with full knowledge that a complete release of all specific ORRO interest in this acreage has not as yet been secured and shall assume a business risk commensurate with the unsecured interest release.

NOTE: The above described tract may be in the vicinity of existing shell reefs where drilling and dredging operations must be conducted in strict conformity with the regulations adopted by the Louisiana Department of Wildlife and Fisheries and/or the U.S. Corps of Engineers, U.S. Army.

NOTE: The State of Louisiana does hereby reserve, and this lease shall be subject to, the imprescriptible right of surface use in the nature of a servitude in favor of the Department of Natural Resources, including its Offices and Commissions, for the sole purpose of implementing, constructing, servicing and maintaining approved coastal zone management and/or restoration projects. Utilization of any and all rights derived under this lease by the mineral lessee, its agents, successors or assigns, shall not interfere with nor hinder the reasonable surface use by the Department of Natural Resources, its Offices or Commissions, as herein above reserved.

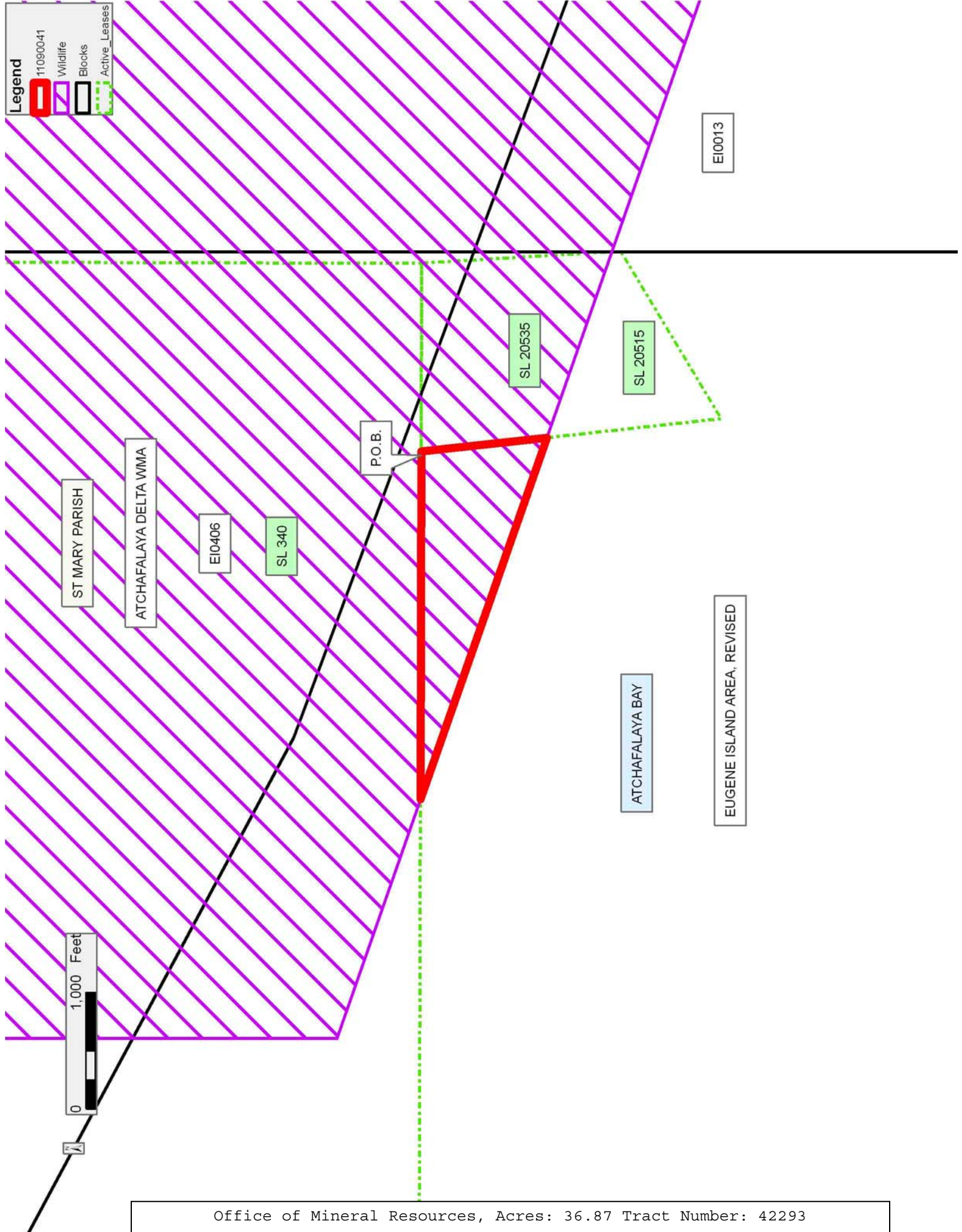
NOTE: This tract is located in an area designated by the Louisiana Legislature or the Wildlife and Fisheries Commission as a Public Oyster Seed Ground, Reservation, or area of Calcasieu or Sabine Lake. Proposed projects occurring in these areas will be evaluated on a case by case basis by Louisiana Department of Wildlife & Fisheries. Modifications to proposed project features including, but not limited to, access routes, well sites, flowlines, and appurtenant structures maybe required by the Louisiana Department of Wildlife and Fisheries. In addition, compensatory mitigation will be required to offset unavoidable habitat impacts.

Applicant: THEOPHILUS OIL, GAS & LAND SERVICES, LLC

Bidder	Cash Payment	Price/Acre	Rental	Oil	Gas	Other

Legend

- 11090041
- Wildlife
- Blocks
- Active_Leases



TRACT 42294 - St. Mary Parish, Louisiana

A portion of all lands located above the mean high water mark, together with lands now or formerly constituting the beds and bottoms of any water body of whatever description or nature belonging to the State of Louisiana which is now located within the boundaries of the Atchafalaya Delta Wildlife Management Area and not presently under mineral lease by the State of Louisiana on September 14, 2011, and more particularly located as follows: Beginning at a point within the Atchafalaya Delta Wildlife Management Area, said point also being the Southeast corner of State Lease No. 20533, and also being the Southwest corner of State Lease No. 20534 having Coordinates of X = 1,940,391.25 and Y = 262,298.08; thence North 89 degrees 54 minutes 48 seconds East 2,748.82 feet along the South boundary of said State Lease No. 20534 to its Southeast corner, also being the most West corner of State Lease No. 20532 having Coordinates of X = 1,943,140.07 and Y = 262,302.23; thence along the boundary of said State Lease No. 20532 the following courses and distances: South 24 degrees 35 minutes 56 seconds East 3,125.84 feet to a corner having Coordinates of X = 1,944,441.24 and Y = 259,460.08 and North 65 degrees 21 minutes 49 seconds East 5,305.00 feet to its most East corner having Coordinates of X = 1,949,263.33 and Y = 261,671.52; thence South 11 degrees 19 minutes 24 seconds East 476.35 feet to the Southwest corner of State Lease No. 20223, also being the North corner of State Lease No. 20224 having Coordinates of X = 1,949,356.86 and Y = 261,204.44; thence along the boundary of said State Lease No. 20224 the following courses and distances: South 41 degrees 25 minutes 26 seconds West 539.37 feet to a corner having Coordinates of X = 1,949,000.00 and Y = 260,800.00 and South 32 degrees 00 minutes 19 seconds East 1,886.80 feet to its South corner having Coordinates of X = 1,950,000.00 and Y = 259,200.00; thence South 510.00 feet to a point having Coordinates of X = 1,950,000.00 and Y = 258,690.00; thence East 5,900.82 feet to a point having Coordinates of X = 1,955,900.82 and Y = 258,690.00, thence South 3,286.94 feet to a point on the North boundary of the East portion of State Lease No. 1666, as amended having Coordinates of X = 1,955,900.82 and Y = 255,403.06; thence South 80 degrees 38 minutes 43 seconds West 55.71 feet to its West corner, also being a Northern corner of State Lease No. 7870 having Coordinates of X = 1,955,845.85 and Y = 255,394.00; thence South 80 degrees 38 minutes 33 seconds West 28.78 feet along the North boundary of said State Lease No. 7870 to its Northwest corner, also being the Northeast corner of State Lease No. 16988, as amended having Coordinates of X = 1,955,817.45 and Y = 255,389.32; thence along the North boundary of said State Lease No. 16988 the following courses and distances: South 80 degrees 38 minutes 52 seconds West 143.07 feet to a corner having Coordinates of X = 1,955,676.28 and Y = 255,366.07 and Southwesterly along an arc having a radius of 6,200.00 feet and a center at X = 1,954,689.22 and Y = 261,487.00 to a point on the Southern boundary of the said Atchafalaya Delta Wildlife Management Area having Coordinates of X = 1,955,123.93 and Y = 255,302.25; thence North 70 degrees 45 minutes 07 seconds West approximately 1,661.43 feet along the said Southern boundary to a point on the Northeast boundary of the West portion of said State Lease No. 1666

having Coordinates of X = 1,953,555.37 and Y = 255,849.96; thence along the Northeast and Northwest boundary of said State Lease No. 1666 the following courses and distances: North 43 degrees 37 minutes 45 seconds West 138.21 feet, North 48 degrees 00 minutes 46 seconds West 403.61 feet, North 55 degrees 04 minutes 09 seconds West 768.44 feet, North 57 degrees 50 minutes 54 seconds West 506.93 feet, North 60 degrees 49 minutes 54 seconds West 631.63 feet, North 63 degrees 53 minutes 12 seconds West 255.35 feet, South 51 degrees 44 minutes 14 seconds West 147.85 feet, South 51 degrees 08 minutes 45 seconds West 300.38 feet and South 42 degrees 36 minutes 51 seconds West approximately 326.31 feet to a point on the Southern boundary of the Atchafalaya Delta Wildlife Management Area having Coordinates of X = 1,950,749.07 and Y = 256,829.86; thence North 70 degrees 45 minutes 07 seconds West approximately 14,117.41 feet along the said Southern boundary to a point on the South boundary of State Lease No. 20533 having Coordinates of X = 1,937,420.82 and Y = 261,483.79; thence along the South boundary of said State Lease No. 20533 the following courses and distances: North 59 degrees 02 minutes 55 seconds East 692.25 feet to a corner having Coordinates of X = 1,938,014.50 and Y = 261,839.82 and North 79 degrees 05 minutes 13 seconds East 2,420.53 feet to the point of beginning, containing approximately **895.41 acres**, all as more particularly outlined on a plat on file in the Office of Mineral Resources, Department of Natural Resources. All bearings, distances and coordinates are based on Louisiana Coordinate System of 1927, (South Zone).

NOTE: The above description of the Tract nominated for lease has been provided and corrected, where required, exclusively by the nomination party. Any mineral lease selected from this Tract and awarded by the Louisiana State Mineral and Energy Board shall be without warranty of any kind, either express, implied, or statutory, including, but not limited to, the implied warranties of merchantability and fitness for a particular purpose. Should the mineral lease awarded by the Louisiana State Mineral and Energy Board be subsequently modified, cancelled or abrogated due to the existence of conflicting leases, operating agreements, private claims or other future obligations or conditions which may affect all or any portion of the leased Tract, it shall not relieve the Lessee of the obligation to pay any bonus due thereon to the Louisiana State Mineral and Energy Board, nor shall the Louisiana State Mineral and Energy Board be obligated to refund any consideration paid by the Lessor prior to such modification, cancellation, or abrogation, including, but not limited to, bonuses, rentals and royalties.

NOTE: The mineral lease is located in the Atchafalaya Delta WMA under the jurisdiction of the Louisiana Department of Wildlife and Fisheries which has promulgated rules and regulations for the protection of game and wildlife on the aforesaid Tract and, therefore, shall be subject to said rules and regulations, a copy of which shall be attached to the mineral leases. In addition to the specific rules and regulations applicable, the following shall apply regarding operations under this mineral lease:

- No activities will be allowed without written authorization of the Louisiana Department of Wildlife and Fisheries.
- Proposed projects will be evaluated on a case by case basis. Modifications to proposed project features including but not limited to access routes, spoil placement, well sites, flowlines and appurtenant structures may be required by the Department of Wildlife and Fisheries.
- Compliance with the Atchafalaya Delta WMA regulations will be required unless otherwise specified by the Department of Wildlife and Fisheries.
- Compensatory mitigation will be required to offset unavoidable wetland impacts.
- Compensation and/or oyster seed ground surveys may be required by the Department for potential impacts to productive oyster seed grounds located within the management area.
- Removal of all structures, facilities and equipment will be required within 120 days of abandonment unless otherwise agreed to in writing by the Louisiana Department of Wildlife and Fisheries.
- No activities will be allowed during the hunting season unless approved by the Department.
- This tract is located within the emerging Atchafalaya Delta. No activities will be allowed on emergent islands or vegetated wetlands. The Louisiana Department of Wildlife and Fisheries (LDWF) shall have discretion to determine access routes. In the event that LDWF approves of dredging for access, LDWF shall have discretion to require hydraulic or spray dredging to reduce environmental impacts.
- Prior to submitting application for wetland permits to Federal and State permitting agencies the leaseholder shall coordinate project details with the Department of Wildlife and Fisheries. Contact person for the Department will be Mike Windham at (504)284-5268.

Additionally, the Department will require a minimum bonus of \$350.00 per acre and a minimum royalty of 25%.

NOTE: The above described tract may be in the vicinity of existing shell reefs where drilling and dredging operations must be conducted in strict conformity with the regulations adopted by the Louisiana Department of Wildlife and Fisheries and/or the U.S. Corps of Engineers, U.S. Army.

NOTE: The State of Louisiana does hereby reserve, and this lease shall be subject to, the imprescriptible right of surface use in the nature of a servitude in favor of the Department of Natural Resources, including its Offices and Commissions, for the sole purpose of implementing, constructing, servicing and maintaining approved coastal zone management and/or restoration projects. Utilization of any and all rights derived

under this lease by the mineral lessee, its agents, successors or assigns, shall not interfere with nor hinder the reasonable surface use by the Department of Natural Resources, its Offices or Commissions, as herein above reserved.

NOTE: This tract is located in an area designated by the Louisiana Legislature or the Wildlife and Fisheries Commission as a Public Oyster Seed Ground, Reservation, or area of Calcasieu or Sabine Lake. Proposed projects occurring in these areas will be evaluated on a case by case basis by Louisiana Department of Wildlife & Fisheries. Modifications to proposed project features including, but not limited to, access routes, well sites, flowlines, and appurtenant structures maybe required by the Louisiana Department of Wildlife and Fisheries. In addition, compensatory mitigation will be required to offset unavoidable habitat impacts.

Applicant: THEOPHILUS OIL, GAS & LAND SERVICES, LLC

Bidder	Cash Payment	Price/Acre	Rental	Oil	Gas	Other

Legend

- 11090043
- Wildlife
- Blocks
- Active Leases

ATCHAFALAYA DELTA WMA

EI0014

SL 16988

SL 1666

SL 20223

SL 20224

SL 20532

ST MARY PARISH

SL 20534

EI0013

P.O.B.

SL 20533

ATCHAFALAYA BAY

EUGENE ISLAND AREA, REVISED

EI0018

EI0019



TRACT 42295 - St. Mary Parish, Louisiana

A portion of all lands located above the mean high water mark, together with lands now or formerly constituting the beds and bottoms of any water body of whatever description or nature belonging to the State of Louisiana which is now located within the boundaries of the Atchafalaya Delta Wildlife Management Area and not presently under mineral lease by the State of Louisiana on September 14, 2011, and more particularly located as follows: Beginning at a point within the Atchafalaya Delta Wildlife Management Area, having Coordinates of X = 1,955,900.82 and Y = 258,690.00; thence East 5,375.96 feet to a point having Coordinates of X = 1,961,276.78 and Y = 258,690.00; thence South approximately 5,536.19 feet to a point on the Southern boundary of the Atchafalaya Delta Wildlife Management Area having Coordinates of X = 1,961,276.78 and Y = 253,153.81; thence North 70 degrees 45 minutes 07 seconds West approximately 1,989.10 feet to a point on the East boundary of State Lease No. 7870, as amended having Coordinates of X = 1,959,398.87 and Y = 253,809.54; thence along the East boundary of said State Lease No. 7870, the following courses and distances: North 19 degrees 17 minutes 26 seconds West 464.77 feet to a corner and Northwesterly along an arc having a radius of 8,050.00 feet and a center at X = 1,966,871.96 and Y = 256,824.46 to its Northeast corner having Coordinates of X = 1,958,950.07 and Y = 255,394.00, said point also being the Southeast corner of State Lease No. 7868, as amended; thence along the East and North boundary of said State Lease No. 7868 the following courses and distances: Northwesterly along an arc having a radius of 8,050.00 feet and a center at X = 1,966,871.92 and Y = 256,824.66 to a point having Coordinates of X = 1,958,905.82 and Y = 255,655.46, North 06 degrees 14 minutes 24 seconds West 279.42 feet, South 80 degrees 59 minutes 39 seconds West 1,011.34 and South 77 degrees 20 minutes 02 seconds West 132.58 feet to its Northwest corner, also being the Northeast corner of East portion of State Lease No. 1666, as amended having Coordinates of X = 1,957,747.23 and Y = 255,755.84; thence along the North boundary of said State Lease No. 1666 the following courses and distances: South 77 degrees 20 minutes 07 seconds West 830.81 feet and South 80 degrees 38 minutes 43 seconds 1049.77 feet to a point having Coordinates of X = 1,955,900.82 and Y = 255,403.06; thence North 3,286.94 feet to the point of beginning, containing approximately **478.71 acres**, all as more particularly outlined on a plat on file in the Office of Mineral Resources, Department of Natural Resources. All bearings, distances and coordinates are based on Louisiana Coordinate System of 1927, (South Zone).

NOTE: The above description of the Tract nominated for lease has been provided and corrected, where required, exclusively by the nomination party. Any mineral lease selected from this Tract and awarded by the Louisiana State Mineral and Energy Board shall be without warranty of any kind, either express, implied, or statutory, including, but not limited to, the implied warranties of merchantability and fitness for a particular purpose. Should the mineral lease awarded by the Louisiana State Mineral and Energy Board be subsequently modified, cancelled or abrogated due to

the existence of conflicting leases, operating agreements, private claims or other future obligations or conditions which may affect all or any portion of the leased Tract, it shall not relieve the Lessee of the obligation to pay any bonus due thereon to the Louisiana State Mineral and Energy Board, nor shall the Louisiana State Mineral and Energy Board be obligated to refund any consideration paid by the Lessor prior to such modification, cancellation, or abrogation, including, but not limited to, bonuses, rentals and royalties.

NOTE: The mineral lease is located in the Atchafalaya Delta WMA under the jurisdiction of the Louisiana Department of Wildlife and Fisheries which has promulgated rules and regulations for the protection of game and wildlife on the aforesaid Tract and, therefore, shall be subject to said rules and regulations, a copy of which shall be attached to the mineral leases. In addition to the specific rules and regulations applicable, the following shall apply regarding operations under this mineral lease:

- No activities will be allowed without written authorization of the Louisiana Department of Wildlife and Fisheries.
- Proposed projects will be evaluated on a case by case basis. Modifications to proposed project features including but not limited to access routes, spoil placement, well sites, flowlines and appurtenant structures may be required by the Department of Wildlife and Fisheries.
- Compliance with the Atchafalaya Delta WMA regulations will be required unless otherwise specified by the Department of Wildlife and Fisheries.
- Compensatory mitigation will be required to offset unavoidable wetland impacts.
- Compensation and/or oyster seed ground surveys may be required by the Department for potential impacts to productive oyster seed grounds located within the management area.
- Removal of all structures, facilities and equipment will be required within 120 days of abandonment unless otherwise agreed to in writing by the Louisiana Department of Wildlife and Fisheries.
- No activities will be allowed during the hunting season unless approved by the Department.
- This tract is located within the emerging Atchafalaya Delta. No activities will be allowed on emergent islands or vegetated wetlands. The Louisiana Department of Wildlife and Fisheries (LDWF) shall have discretion to determine access routes. In the event that LDWF approves of dredging for access, LDWF shall have discretion to require hydraulic or spray dredging to reduce environmental impacts.
- Prior to submitting application for wetland permits to Federal and State permitting agencies the leaseholder shall coordinate project details with the Department of Wildlife and Fisheries. Contact person for the Department will be Mike Windham at (504)284-5268.

Additionally, the Department will require a minimum bonus of \$350.00 per acre and a minimum royalty of 25%.

NOTE: The above described tract may be in the vicinity of existing shell reefs where drilling and dredging operations must be conducted in strict conformity with the regulations adopted by the Louisiana Department of Wildlife and Fisheries and/or the U.S. Corps of Engineers, U.S. Army.

NOTE: The State of Louisiana does hereby reserve, and this lease shall be subject to, the imprescriptible right of surface use in the nature of a servitude in favor of the Department of Natural Resources, including its Offices and Commissions, for the sole purpose of implementing, constructing, servicing and maintaining approved coastal zone management and/or restoration projects. Utilization of any and all rights derived under this lease by the mineral lessee, its agents, successors or assigns, shall not interfere with nor hinder the reasonable surface use by the Department of Natural Resources, its Offices or Commissions, as herein above reserved.

NOTE: This tract is located in an area designated by the Louisiana Legislature or the Wildlife and Fisheries Commission as a Public Oyster Seed Ground, Reservation, or area of Calcasieu or Sabine Lake. Proposed projects occurring in these areas will be evaluated on a case by case basis by Louisiana Department of Wildlife & Fisheries. Modifications to proposed project features including, but not limited to, access routes, well sites, flowlines, and appurtenant structures maybe required by the Louisiana Department of Wildlife and Fisheries. In addition, compensatory mitigation will be required to offset unavoidable habitat impacts.

Applicant: THEOPHILUS OIL, GAS & LAND SERVICES, LLC

Bidder	Cash Payment	Price/Acre	Rental	Oil	Gas	Other

Legend

- 11090047
- Wildlife
- Blocks
- Active Leases

