

**TRACT 41115 - Assumption and St. Martin Parishes, Louisiana**

All of the lands now or formerly constituting the beds and bottoms of all water bodies of every nature and description as to which title is vested in the State of Louisiana, together with all islands arising therein and other lands formed by accretion or by reliction, where allowed by law, excepting tax adjudicated lands, and not presently under mineral lease on September 9, 2009, situated in Assumption and St. Martin Parishes, Louisiana, and more particularly described as follows: Beginning at a point having Coordinates of X = 2,030,320.00 and Y = 476,756.90; thence East 18,480.00 feet to a point having Coordinates of X = 2,048,800.00 and Y = 476,756.90; thence South 18,480.00 feet to a point having Coordinates of X = 2,048,800.00 and Y = 458,276.90; thence West 18,480.00 feet to a point having Coordinates of X = 2,030,320.00 and Y = 458,276.90; thence North 18,480.00 feet to the point of beginning, (This tract includes only waterbottoms claimed and owned by the state and specifically excludes any land which the state may claim or own and to which the mineral rights are vested in the state), above described tract containing approximately **849 acres**, all as more particularly outlined on a plat on file in the Office of Mineral Resources, Department of Natural Resources. All bearings, distances and coordinates are based on Louisiana Coordinate System of 1927, (North or South Zone), where applicable.

NOTE: The above description of the Tract nominated for lease has been provided and corrected, where required, exclusively by the nomination party. Any mineral lease selected from this Tract and awarded by the Louisiana State Mineral Board shall be without warranty of any kind, either express, implied, or statutory, including, but not limited to, the implied warranties of merchantability and fitness for a particular purpose. Should the mineral lease awarded by the Louisiana State Mineral Board be subsequently modified, cancelled or abrogated due to the existence of conflicting leases, operating agreements, private claims or other future obligations or conditions which may affect all or any portion of the leased Tract, it shall not relieve the Lessee of the obligation to pay any bonus due thereon to the Louisiana State Mineral Board, nor shall the Louisiana State Mineral Board be obligated to refund any consideration paid by the Lessor prior to such modification, cancellation, or abrogation, including, but not limited to, bonuses, rentals and royalties.

NOTE: The State of Louisiana does hereby reserve, and this lease shall be subject to, the imprescriptible right of surface use in the nature of a servitude in favor of the Department of Natural Resources, including its Offices and Commissions, for the sole purpose of implementing, constructing, servicing and maintaining approved coastal zone management and/or restoration projects. Utilization of any and all rights derived under this lease by the mineral lessee, its agents, successors or assigns, shall not interfere with nor hinder the reasonable surface use by the Department of Natural Resources, its Offices or Commissions, as herein above reserved.

Applicant: LESLIE M. COOPER

Bidder	Cash Payment	Price/ Acre	Rental	Oil	Gas	Other

**Legend**

09090004  
Counties  
DOQQ2004

T12S - R13E

T13S - R13E

BAYOU PIERRE PART

GRAND BAYOU

LAKE VERRET

ASSUMPTION PARISH

BAYOU GROSBECK

T12S - R12E

P.O.B.

T13S - R12E

IBERIA PARISH

ST MARTIN PARISH

0 4,000 Feet

**TRACT 41116 - St. Mary and Terrebonne Parishes, Louisiana**

All of the lands now or formerly constituting the beds and bottoms of all water bodies of every nature and description as to which title is vested in the State of Louisiana, together with all islands arising therein and other lands formed by accretion or by reliction, where allowed by law, excepting tax adjudicated lands, and not presently under mineral lease on September 9, 2009, situated in St. Mary and Terrebonne Parishes, Louisiana, and more particularly described as follows: Beginning at a point having Coordinates of X = 2,054,930.95 and Y = 335,577.31; thence South 15,495.12 feet to a point having Coordinates of X = 2,054,930.95 and Y = 320,082.19; thence West 17,772.62 feet to a point having Coordinates of X = 2,037,158.33 and Y = 320,082.19; thence North 15,495.12 feet to a point having Coordinates of X = 2,037,158.33 and Y = 335,577.31; thence East 17,772.62 feet to the point of beginning, containing approximately **181 acres**, all as more particularly outlined on a plat on file in the Office of Mineral Resources, Department of Natural Resources. All bearings, distances and coordinates are based on Louisiana Coordinate System of 1927, (North or South Zone), where applicable.

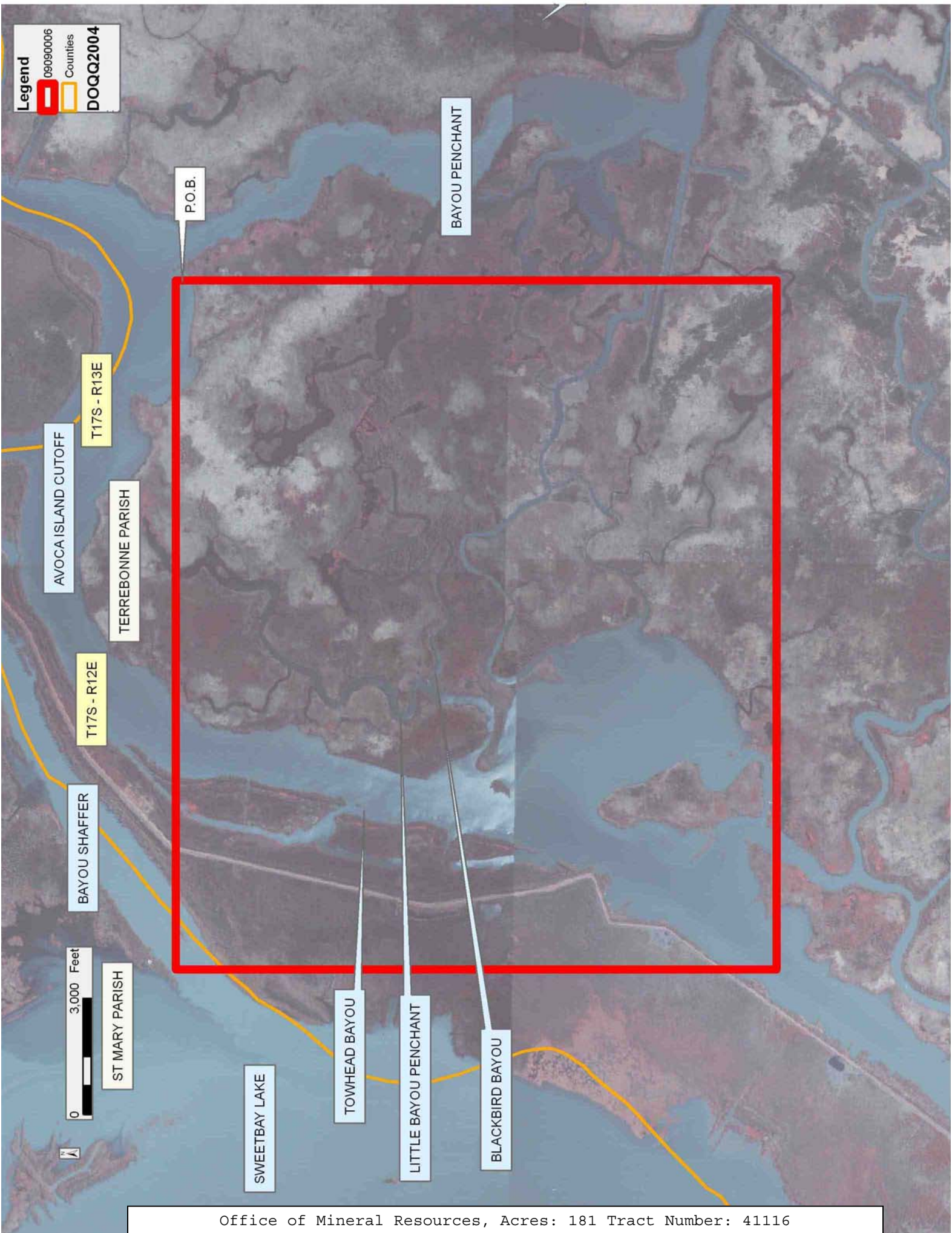
NOTE: The above description of the Tract nominated for lease has been provided and corrected, where required, exclusively by the nomination party. Any mineral lease selected from this Tract and awarded by the Louisiana State Mineral Board shall be without warranty of any kind, either express, implied, or statutory, including, but not limited to, the implied warranties of merchantability and fitness for a particular purpose. Should the mineral lease awarded by the Louisiana State Mineral Board be subsequently modified, cancelled or abrogated due to the existence of conflicting leases, operating agreements, private claims or other future obligations or conditions which may affect all or any portion of the leased Tract, it shall not relieve the Lessee of the obligation to pay any bonus due thereon to the Louisiana State Mineral Board, nor shall the Louisiana State Mineral Board be obligated to refund any consideration paid by the Lessor prior to such modification, cancellation, or abrogation, including, but not limited to, bonuses, rentals and royalties.

NOTE: The State of Louisiana does hereby reserve, and this lease shall be subject to, the imprescriptible right of surface use in the nature of a servitude in favor of the Department of Natural Resources, including its Offices and Commissions, for the sole purpose of implementing, constructing, servicing and maintaining approved coastal zone management and/or restoration projects. Utilization of any and all rights derived under this lease by the mineral lessee, its agents, successors or assigns, shall not interfere with nor hinder the reasonable surface use by the Department of Natural Resources, its Offices or Commissions, as herein above reserved.

Applicant: LESLIE M. COOPER

Bidder	Cash Payment	Price/ Acre	Rental	Oil	Gas	Other





**Legend**

090900006  
Counties  
DOQQ2004

0 3,000 Feet



ST MARY PARISH

BAYOU SHAFFER

T17S - R12E

AVOCA ISLAND CUTOFF

T17S - R13E

TERREBONNE PARISH

P.O.B.

BAYOU PENCHANT

SWEETBAY LAKE

TOWHEAD BAYOU

LITTLE BAYOU PENCHANT

BLACKBIRD BAYOU

**TRACT 41117 - St. Mary and Terrebonne Parishes, Louisiana**

All of the lands now or formerly constituting the beds and bottoms of all water bodies of every nature and description as to which title is vested in the State of Louisiana, together with all islands arising therein and other lands formed by accretion or by reliction, where allowed by law, excepting tax adjudicated lands, and not presently under mineral lease on September 9, 2009, situated in St. Mary and Terrebonne Parishes, Louisiana, and more particularly described as follows: Beginning at a point having Coordinates of X = 2,037,158.33 and Y = 306,723.62; thence West 9,279.85 feet to a point having Coordinates of X = 2,027,878.48 and Y = 306,723.62; thence North 5,135.17 feet to a point having Coordinates of X = 2,027,878.48 and Y = 311,858.79; thence East 2,765.62 feet to a point having Coordinates of X = 2,030,644.10 and Y = 311,858.79; thence North 10,495.73 feet to a point having Coordinates of X = 2,030,644.10 and Y = 322,354.52; thence East 6,514.23 feet to a point having Coordinates of X = 2,037,158.33 and Y = 322,354.52; thence South 15,630.90 feet to the point of beginning, containing approximately **98 acres**, all as more particularly outlined on a plat on file in the Office of Mineral Resources, Department of Natural Resources. All bearings, distances and coordinates are based on Louisiana Coordinate System of 1927, (North or South Zone), where applicable.

NOTE: The above description of the Tract nominated for lease has been provided and corrected, where required, exclusively by the nomination party. Any mineral lease selected from this Tract and awarded by the Louisiana State Mineral Board shall be without warranty of any kind, either express, implied, or statutory, including, but not limited to, the implied warranties of merchantability and fitness for a particular purpose. Should the mineral lease awarded by the Louisiana State Mineral Board be subsequently modified, cancelled or abrogated due to the existence of conflicting leases, operating agreements, private claims or other future obligations or conditions which may affect all or any portion of the leased Tract, it shall not relieve the Lessee of the obligation to pay any bonus due thereon to the Louisiana State Mineral Board, nor shall the Louisiana State Mineral Board be obligated to refund any consideration paid by the Lessor prior to such modification, cancellation, or abrogation, including, but not limited to, bonuses, rentals and royalties.

NOTE: The State of Louisiana does hereby reserve, and this lease shall be subject to, the imprescriptible right of surface use in the nature of a servitude in favor of the Department of Natural Resources, including its Offices and Commissions, for the sole purpose of implementing, constructing, servicing and maintaining approved coastal zone management and/or restoration projects. Utilization of any and all rights derived under this lease by the mineral lessee, its agents, successors or assigns, shall not interfere with nor hinder the reasonable surface use by the Department of Natural Resources, its Offices or Commissions, as herein above reserved.

Applicant: LESLIE M. COOPER

Bidder	Cash Payment	Price/ Acre	Rental	Oil	Gas	Other



**Legend**  
09090005  
Counties  
DOQQ2004

TERREBONNE PARISH

LOWER ATCHAFALAYA RIVER

ST MARY PARISH

0 3,000 Feet

AVOCA ISLAND CUTOFF

T17S - R12E

LITTLE HORN BAYOU

T18S - R12E

DRY HORN BAYOU

P.O.B.

CUTOFF BAYOU

**TRACT 41118 - Terrebonne Parish, Louisiana**

All of the lands now or formerly constituting the beds and bottoms of all water bodies of every nature and description as to which title is vested in the State of Louisiana, together with all islands arising therein and other lands formed by accretion or by reliction, where allowed by law, excepting tax adjudicated lands, and not presently under mineral lease on September 9, 2009, situated in Terrebonne Parish, Louisiana, and more particularly described as follows: Beginning at a point having Coordinates of X = 2,047,821.83 and Y = 306,723.62; thence West 10,663.50 feet to a point having Coordinates of X = 2,037,158.33 and Y = 306,723.62; thence North 13,358.57 feet to a point having Coordinates of X = 2,037,158.33 and Y = 320,082.19; thence East 17,772.62 feet to a point having Coordinates of X = 2,054,930.95 and Y = 320,082.19; thence South 2,727.76 feet to a point having Coordinates of X = 2,054,930.95 and Y = 317,354.43; thence West 275.54 feet to a point having Coordinates of X = 2,054,655.41 and Y = 317,354.43; thence South 3,194.13 feet to a point having Coordinates of X = 2,054,655.41 and Y = 314,160.30; thence West 6,833.58 feet to a point having Coordinates of X = 2,047,821.83 and Y = 314,160.30; thence South 684.49 feet to the Northwest corner of State Lease No. 19372 having Coordinates of X = 2,047,821.83 and Y = 313,475.81; thence South 6,520.00 feet along the West boundary of said State Lease No. 19372 to its Southwest corner having Coordinates of X = 2,047,821.83 and Y = 306,955.81; thence South 232.19 feet to the point of beginning, containing approximately **211 acres**, all as more particularly outlined on a plat on file in the Office of Mineral Resources, Department of Natural Resources. All bearings, distances and coordinates are based on Louisiana Coordinate System of 1927, (North or South Zone), where applicable.

NOTE: The above description of the Tract nominated for lease has been provided and corrected, where required, exclusively by the nomination party. Any mineral lease selected from this Tract and awarded by the Louisiana State Mineral Board shall be without warranty of any kind, either express, implied, or statutory, including, but not limited to, the implied warranties of merchantability and fitness for a particular purpose. Should the mineral lease awarded by the Louisiana State Mineral Board be subsequently modified, cancelled or abrogated due to the existence of conflicting leases, operating agreements, private claims or other future obligations or conditions which may affect all or any portion of the leased Tract, it shall not relieve the Lessee of the obligation to pay any bonus due thereon to the Louisiana State Mineral Board, nor shall the Louisiana State Mineral Board be obligated to refund any consideration paid by the Lessor prior to such modification, cancellation, or abrogation, including, but not limited to, bonuses, rentals and royalties.

NOTE: The State of Louisiana does hereby reserve, and this lease shall be subject to, the imprescriptible right of surface use in the nature of a servitude in favor of the Department of Natural Resources, including its Offices and Commissions, for the sole purpose of implementing, constructing, servicing and maintaining approved coastal zone management

and/or restoration projects. Utilization of any and all rights derived under this lease by the mineral lessee, its agents, successors or assigns, shall not interfere with nor hinder the reasonable surface use by the Department of Natural Resources, its Offices or Commissions, as herein above reserved.

Applicant: LESLIE M. COOPER

Bidder	Cash Payment	Price/ Acre	Rental	Oil	Gas	Other



**Legend**

- 09090007
- Active\_Leases
- Counties
- DOQQ2004

