

**TRACT 40208 - Winn Parish, Louisiana**

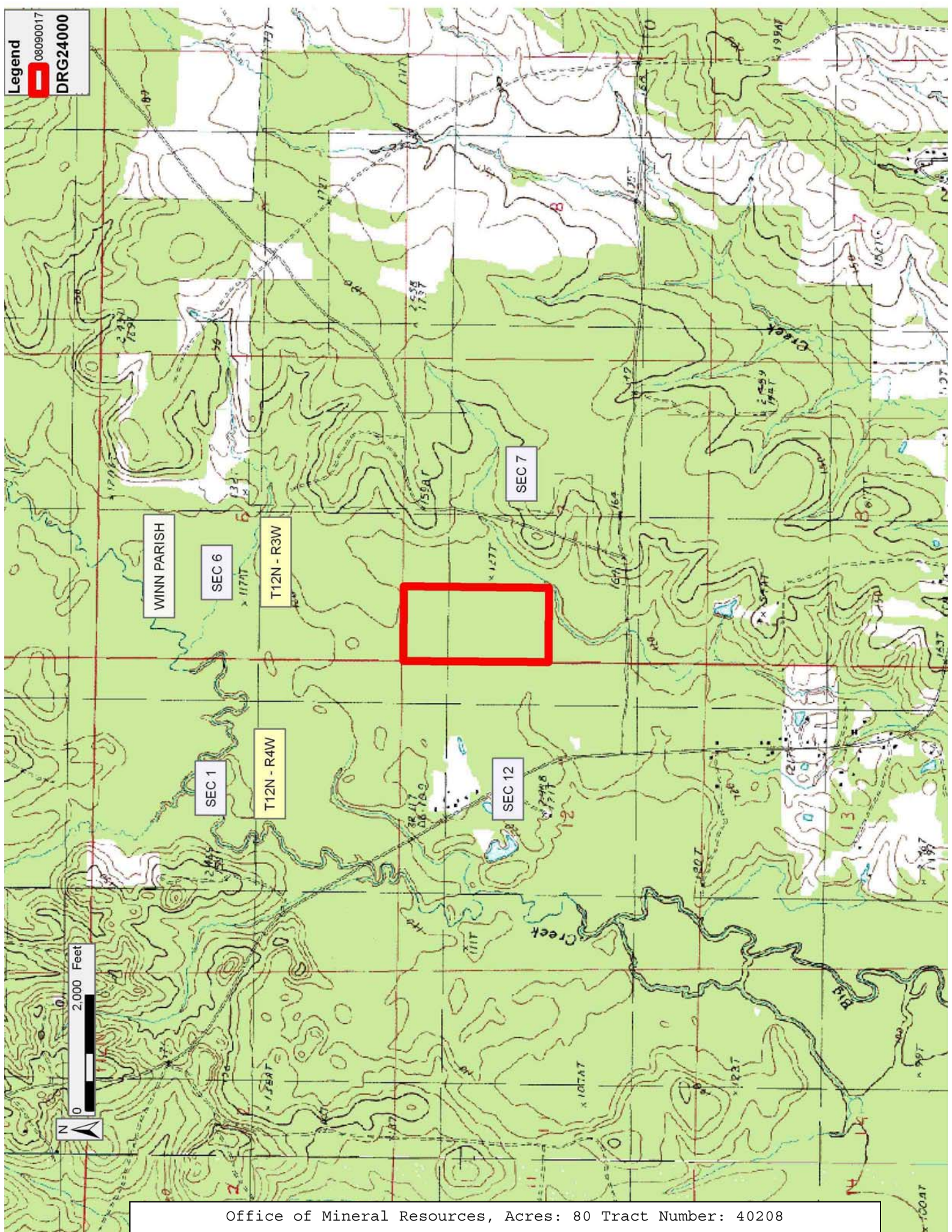
A certain Tract of land, excluding the beds and bottoms of all navigable waters, belonging to and not presently under mineral lease from Louisiana Tech University on September 10, 2008, being more fully described as follows: The East Half of the Northeast Quarter (E/2 of the NE/4) of Section 7, Township 12 North, Range 3 West, Winn Parish, Louisiana, containing approximately **80 acres**, all as more particularly outlined on a plat on file in the Office of Mineral Resources, Department of Natural Resources. The description is based on information provided by the State Agency regarding location and ownership of surface and mineral rights. All bearings, distances and coordinates, if applicable, are based on Louisiana Coordinate System of 1927, (North or South Zone).

NOTE: The above description of the Tract nominated for lease has been provided and corrected, where required, exclusively by the nomination party. Any mineral lease selected from this Tract and awarded by the Louisiana State Mineral Board shall be without warranty of any kind, either express, implied, or statutory, including, but not limited to, the implied warranties of merchantability and fitness for a particular purpose. Should the mineral lease awarded by the Louisiana State Mineral Board be subsequently modified, cancelled or abrogated due to the existence of conflicting leases, operating agreements, private claims or other future obligations or conditions which may affect all or any portion of the leased Tract, it shall not relieve the Lessee of the obligation to pay any bonus due thereon to the Louisiana State Mineral Board, nor shall the Louisiana State Mineral Board be obligated to refund any consideration paid by the Lessor prior to such modification, cancellation, or abrogation, including, but not limited to, bonuses, rentals and royalties.

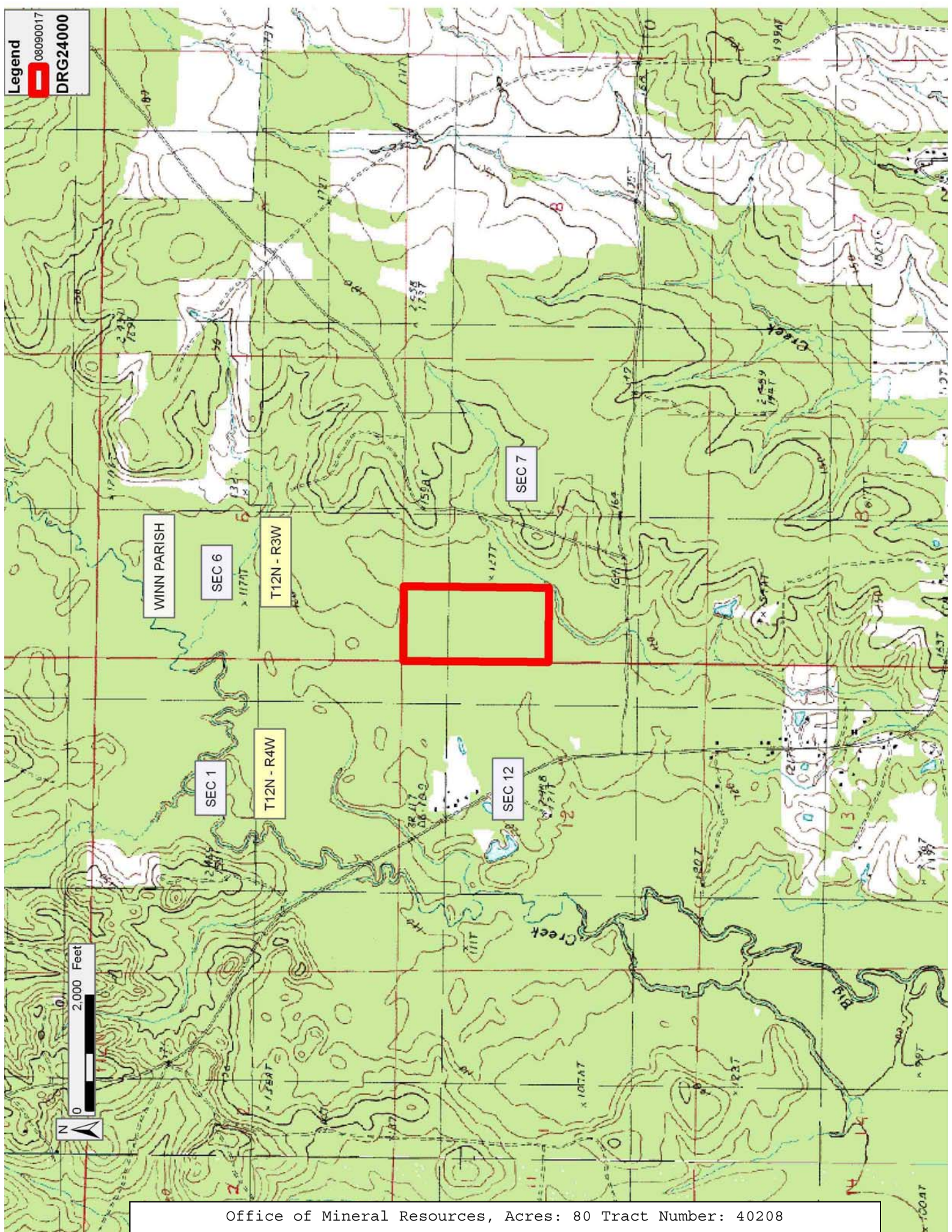
Applicant: ASLAN, LLC to Agency and by Resolution from the Louisiana Tech University authorizing the Mineral Board to act in its behalf

Bidder	Cash Payment	Price/Acre	Rental	Oil	Gas	Other









WINN PARISH

SEC 6

T12N - R3W

SEC 7

SEC 1

T12N - R4W

SEC 12

13



**TRACT 40209 - Plaquemines Parish, Louisiana**

A certain Tract of land, excluding the beds and bottoms of all navigable waters, belonging to and not presently under mineral lease from Plaquemines Parish Government (Council) and Jefferson Parish Council on September 10, 2008, being more fully described as follows: That certain tract of land belonging to the Jefferson Parish Council and the Plaquemines Parish Government (formerly known as Plaquemines Parish Commission Council), being an undivided fifty (50%) percent interest to each said parish, and being situated in portions of Sections 44 and 45, Township 15 South, Range 24 East, Plaquemines Parish, Louisiana and being more particularly described as beginning at a point having Coordinates of X = 2,411,484.45 feet and Y = 417,092.05 feet and which point is the intersection of Sections 3, 4, 45 and 46, Township 15 South, Range 24 East; thence South 28 degrees 20 minutes 05 seconds West, along the section line between Sections 4 and 45 and Sections 4 and 44, both of Township 15 South, Range 24 East, Plaquemines Parish, Louisiana, a distance of 3,404.10 feet; thence North 68 degrees 46 minutes 34 seconds West, a distance of 1,643.97 feet to a point; thence North 25 degrees 23 minutes 35 seconds East, a distance of 3,509.93 feet to a point on the section line between Sections 45 and 46, Township 15 South, Range 24 East, Plaquemines Parish, Louisiana; thence along the section line between Sections 45 and 46, Township 15 South, Range 24 East, South 64 degrees 53 minutes 50 seconds East, a distance of 1,814.34 feet to the point of beginning, containing approximately **136.838 acres**, all as more particularly outlined on a plat on file in the Office of Mineral Resources, Department of Natural Resources. The description is based on information provided by the State Agency regarding location and ownership of surface and mineral rights. All bearings, distances and coordinates, if applicable, are based on Louisiana Coordinate System of 1927, (North or South Zone).

NOTE: The above description of the Tract nominated for lease has been provided and corrected, where required, exclusively by the nomination party. Any mineral lease selected from this Tract and awarded by the Louisiana State Mineral Board shall be without warranty of any kind, either express, implied, or statutory, including, but not limited to, the implied warranties of merchantability and fitness for a particular purpose. Should the mineral lease awarded by the Louisiana State Mineral Board be subsequently modified, cancelled or abrogated due to the existence of conflicting leases, operating agreements, private claims or other future obligations or conditions which may affect all or any portion of the leased Tract, it shall not relieve the Lessee of the obligation to pay any bonus due thereon to the Louisiana State Mineral Board, nor shall the Louisiana State Mineral Board be obligated to refund any consideration paid by the Lessor prior to such modification, cancellation, or abrogation, including, but not limited to, bonuses, rentals and royalties.

NOTE: The mineral royalty of twenty-five (25%) of all gas and oil produced and saved.

NOTE: The mineral royalty of twenty-five (25%) of the value per long ton of sulphur produced and saved which shall yield not less than two dollars (\$2.00) per long ton.

NOTE: The mineral royalty of twenty-five (25%) of the value per ton for all potash produced and saved, which shall yield not less than ten cents (\$.10) per ton.

NOTE: The mineral royalty of five (5%) percent of all lignite produced and saved.

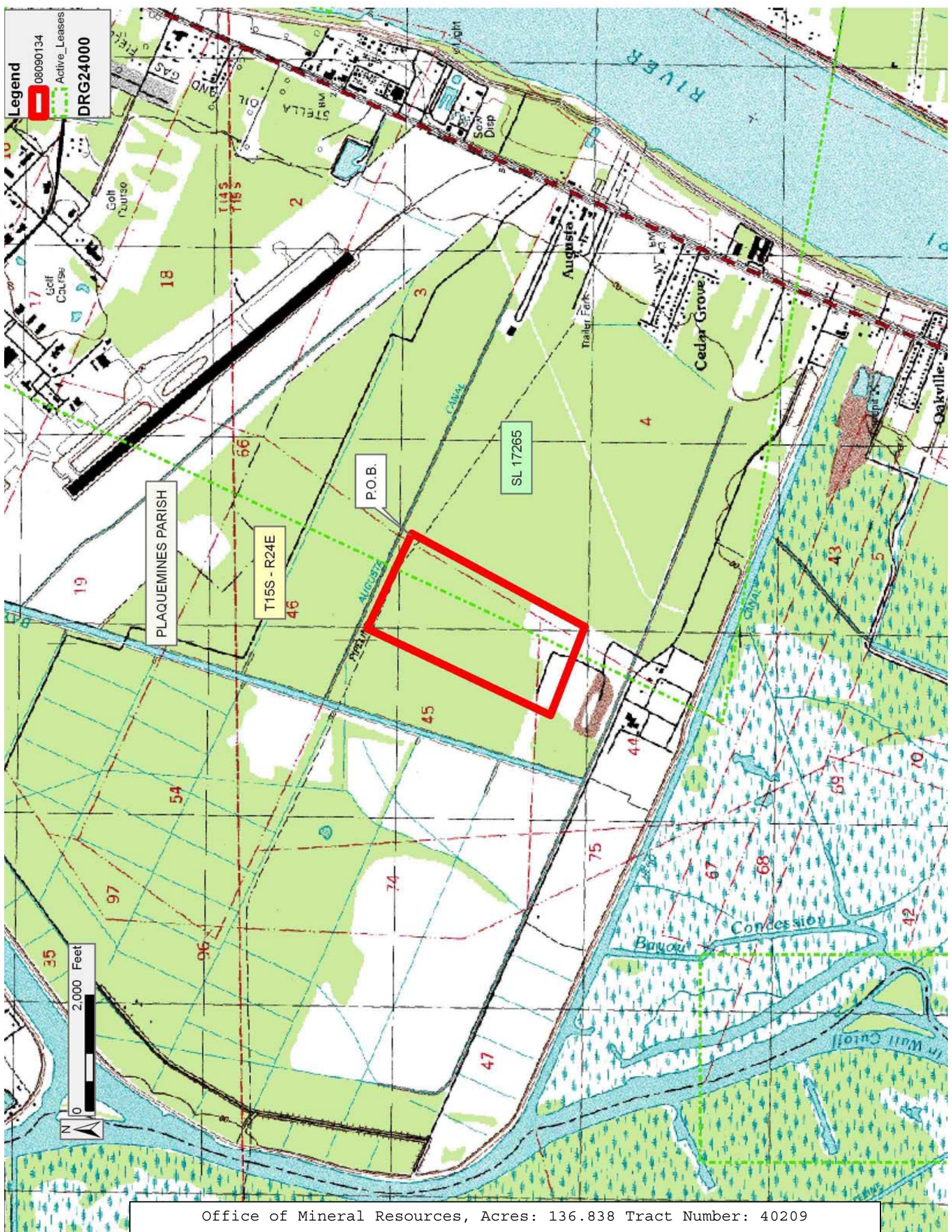
NOTE: The mineral royalty of five (5%) percent of the value per ton on a dry salt basis for all salt produced and saved, which shall yield not less than ten cents (\$0.10) per ton.

NOTE: The mineral royalty of twenty-five (25%) percent of all other minerals produced and saved; and, subject to all provisions noted in the Plaquemines Parish Government, Mineral Lease Form.

Applicant: ALLEN & KIRMSE, LTD. to Agency and by Resolution from the Plaquemines Parish Government (Council) and Jefferson Parish Council authorizing the Mineral Board to act in its behalf

Bidder	Cash Payment	Price/Acre	Rental	Oil	Gas	Other





Legend  
08090134  
Active Leases  
DRG24000

PLAQUEMINES PARISH

T15S - R24E

P.O.B.

SL 17265