

TRACT 40186 - Lasalle Parish, Louisiana

All of the lands now or formerly constituting the beds and bottoms of all water bodies of every nature and description as to which title is vested in the State of Louisiana, together with all islands arising therein and other lands formed by accretion or by reliction, where allowed by law, excepting tax adjudicated lands, and not presently under mineral lease on September 10, 2008, situated in Lasalle Parish, Louisiana, and more particularly described as follows: Beginning at a point within Dewey W. Willis Wildlife Management Area, said point being the Northwest corner of State Lease No. 19561 and the Southwest corner of State Lease No. 19234 having Coordinates of X = 2,104,435.07 and Y = 287,284.20; thence South approximately 491 feet to a point on the boundary of said Dewey W. Willis Wildlife Management Area; thence along the meanders of the boundary of said Dewey W. Willis Wildlife Management Area the following: Northwesterly, Northerly and Northeasterly to a point of intersection with the West boundary of said State Lease No. 19234 having a Coordinate of X = 2,104,435.07; thence South approximately 1,287 feet along the West boundary of said State Lease No. 19234 to the point of beginning, (This tract includes only waterbottoms claimed and owned by the state and specifically excludes any land which the state or Wildlife and Fisheries may claim or own and to which the mineral rights are vested in them), containing approximately **35 acres**, all as more particularly outlined on a plat on file in the Office of Mineral Resources, Department of Natural Resources. All bearings, distances and coordinates are based on Louisiana Coordinate System of 1927, (North or South Zone), where applicable.

NOTE: The above description of the Tract nominated for lease has been provided and corrected, where required, exclusively by the nomination party. Any mineral lease selected from this Tract and awarded by the Louisiana State Mineral Board shall be without warranty of any kind, either express, implied, or statutory, including, but not limited to, the implied warranties of merchantability and fitness for a particular purpose. Should the mineral lease awarded by the Louisiana State Mineral Board be subsequently modified, cancelled or abrogated due to the existence of conflicting leases, operating agreements, private claims or other future obligations or conditions which may affect all or any portion of the leased Tract, it shall not relieve the Lessee of the obligation to pay any bonus due thereon to the Louisiana State Mineral Board, nor shall the Louisiana State Mineral Board be obligated to refund any consideration paid by the Lessor prior to such modification, cancellation, or abrogation, including, but not limited to, bonuses, rentals and royalties.

NOTE: The Office of Mineral Resources will require a minimum bonus of \$150 per acre and a minimum royalty of 25%.

NOTE: The mineral lease is located within the Dewey W Willis WMA under the jurisdiction of the Louisiana Department of Wildlife and Fisheries which has promulgated rules and regulations for the protection of game and wildlife on the aforesaid Tract and, therefore, shall be subject to said rules and regulations, a copy of which shall be attached to the mineral

lease. In addition to the specific rules and regulations applicable, the following shall apply regarding operations under this mineral lease:

1. No activities will be allowed without written authorization from the Louisiana Department of Wildlife and Fisheries.
2. Projects will be evaluated on a case by case basis. Modifications to projects may be required including, but not limited to, access routes, spoil placement, well sites, flow lines and other appurtenant structures.
3. Mitigation will be required to offset avoidable wetland impacts.
4. Removal of all structures, facilities and equipment will be required within 120 days of abandonment unless otherwise agreed to by the Louisiana Department of Wildlife and Fisheries.
5. No activities will be allowed during the hunting season unless approved by the Department.
6. Compliance with the said WMA regulations will be required unless otherwise specified by the Department.
7. Prior to submitting applications for wetland permits to Federal and State permitting agencies the lease holder shall coordinate project details with the Louisiana Department of Wildlife and Fisheries, Fur and Refuge Division. Contact person for the Department will be Mike Windham at (504) 284-5268.

Applicant: TRIDIMENSION ENERGY, LP

Bidder	Cash Payment	Price/Acre	Rental	Oil	Gas	Other

Legend

-  08090145
-  Wildlife
-  Active_Leases

DOQQ2004

LA SALLE PARISH

CATAHOULA LAKE

RAPIDES PARISH

DEWEY WILLS WMA

P.O.B.

SL 19234

SL 19561

T5N - R3E



TRACT 40187 - St. Mary Parish, Louisiana

All of the lands now or formerly constituting the beds and bottoms of all water bodies of every nature and description as to which title is vested in the State of Louisiana, together with all islands arising therein and other lands formed by accretion or by reliction, where allowed by law, excepting tax adjudicated lands, and not presently under mineral lease on September 10, 2008, situated in St. Mary Parish, Louisiana, and more particularly described as follows: Beginning at the Northwest corner of State Lease No. 18840 having Coordinates of X = 1,878,000.00 and Y = 394,850.00; thence South approximately 5,500 feet along the West boundary of said State Lease No. 18840 to a point of intersection with the Northern boundary of the West Cote Blanche Bay portion of State Lease No. 340, as amended; thence Northwesterly along the meanders of the Northern boundary of said portion of State Lease No. 340 to a point of intersection with a North-South line having a Coordinate of X = 1,868,081.00; thence North approximately 1,929 feet along said line to a point having Coordinates of X = 1,868,081.00 and Y = 394,850.00; thence East 9,919.00 feet to the point of beginning, **LESS AND EXCEPT** that portion, if any, of State Lease No. 340, as amended, that may lie within the above described tract, containing approximately **216 acres**, all as more particularly outlined on a plat on file in the Office of Mineral Resources, Department of Natural Resources. All bearings, distances and coordinates are based on Louisiana Coordinate System of 1927, (North or South Zone), where applicable.

NOTE: The above description of the Tract nominated for lease has been provided and corrected, where required, exclusively by the nomination party. Any mineral lease selected from this Tract and awarded by the Louisiana State Mineral Board shall be without warranty of any kind, either express, implied, or statutory, including, but not limited to, the implied warranties of merchantability and fitness for a particular purpose. Should the mineral lease awarded by the Louisiana State Mineral Board be subsequently modified, cancelled or abrogated due to the existence of conflicting leases, operating agreements, private claims or other future obligations or conditions which may affect all or any portion of the leased Tract, it shall not relieve the Lessee of the obligation to pay any bonus due thereon to the Louisiana State Mineral Board, nor shall the Louisiana State Mineral Board be obligated to refund any consideration paid by the Lessor prior to such modification, cancellation, or abrogation, including, but not limited to, bonuses, rentals and royalties.

NOTE: The State of Louisiana does hereby reserve, and this lease shall be subject to, the imprescriptible right of surface use in the nature of a servitude in favor of the Department of Natural Resources, including its Offices and Commissions, for the sole purpose of implementing, constructing, servicing and maintaining approved coastal zone management and/or restoration projects. Utilization of any and all rights derived under this lease by the mineral lessee, its agents, successors or assigns, shall not interfere with nor hinder the reasonable surface use by the

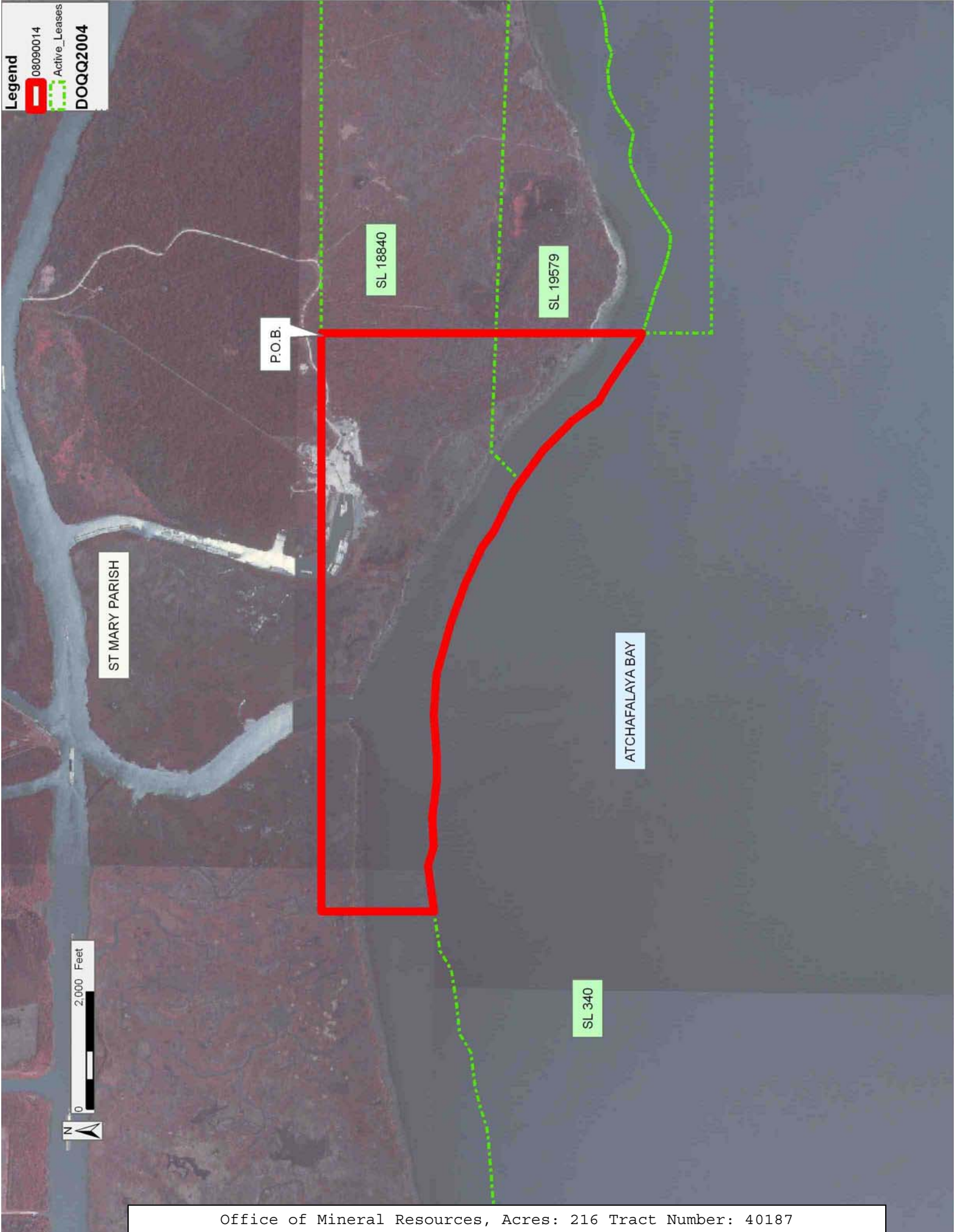
Department of Natural Resources, its Offices or Commissions, as herein above reserved.

NOTE: The Department of Wildlife and Fisheries has designated certain areas in the coastal waters of the State of Louisiana as Oyster Seed Bed Areas. The exact location of those Seed Bed Areas must be obtained from the Department of Wildlife and Fisheries and any work done under a mineral lease from the State of Louisiana may necessarily be conducted in conformity with the rules and regulations promulgated by the said Department of Wildlife and Fisheries for Oyster Seed Bed Areas.

Applicant: ACADIAN LAND SERVICES, L.L.C.

Bidder	Cash Payment	Price/Acre	Rental	Oil	Gas	Other

Legend
08090014
Active_Leases
DOQQ2004



TRACT 40188 - Jefferson and Lafourche Parishes, Louisiana

All of the lands now or formerly constituting the beds and bottoms of all water bodies of every nature and description as to which title is vested in the State of Louisiana, together with all islands arising therein and other lands formed by accretion or by reliction, where allowed by law, excepting tax adjudicated lands, and not presently under mineral lease on September 10, 2008, situated in Jefferson and Lafourche Parishes, Louisiana, and more particularly described as follows: Beginning at a Point having Coordinates of X = 2,372,920.00 and Y = 360,000.00; thence South 2,275.00 feet to a point on the North boundary of State Lease No. 18651 having Coordinates of X = 2,372,920.00 and Y = 357,725.00; thence West 3,370.00 feet along the said North boundary of State Lease No. 18651 to its Northwest corner having Coordinates of X = 2,369,550.00 and Y = 357,725.00; thence South 2,100.00 feet along the West boundary of said State Lease No. 18651 to its Southwest corner having Coordinates of X = 2,369,550.00 and Y = 355,625.00; thence East 3,370.00 feet along the South boundary of said State Lease No. 18651 to a point having Coordinates of X = 2,372,920.00 and Y = 355,625.00; thence South 625.00 feet to a point having Coordinates of X = 2,372,920.00 and Y = 355,000.00; thence West 7,920.00 feet to a point having Coordinates of X = 2,365,000.00 and Y = 355,000.00; thence North 5,000.00 feet to a point having Coordinates of X = 2,365,000.00 and Y = 360,000.00; thence East 7,920.00 feet to the point of beginning, **LESS AND EXCEPT** any portion of State Lease No. 402 that may lie within the above described tract, containing approximately **556 acres**, all as more particularly outlined on a plat on file in the Office of Mineral Resources, Department of Natural Resources. All bearings, distances and coordinates are based on Louisiana Coordinate System of 1927, (North or South Zone), where applicable.

NOTE: The above description of the Tract nominated for lease has been provided and corrected, where required, exclusively by the nomination party. Any mineral lease selected from this Tract and awarded by the Louisiana State Mineral Board shall be without warranty of any kind, either express, implied, or statutory, including, but not limited to, the implied warranties of merchantability and fitness for a particular purpose. Should the mineral lease awarded by the Louisiana State Mineral Board be subsequently modified, cancelled or abrogated due to the existence of conflicting leases, operating agreements, private claims or other future obligations or conditions which may affect all or any portion of the leased Tract, it shall not relieve the Lessee of the obligation to pay any bonus due thereon to the Louisiana State Mineral Board, nor shall the Louisiana State Mineral Board be obligated to refund any consideration paid by the Lessor prior to such modification, cancellation, or abrogation, including, but not limited to, bonuses, rentals and royalties.

NOTE: The State of Louisiana does hereby reserve, and this lease shall be subject to, the imprescriptible right of surface use in the nature of a servitude in favor of the Department of Natural Resources, including its Offices and Commissions, for the sole purpose of implementing,

constructing, servicing and maintaining approved coastal zone management and/or restoration projects. Utilization of any and all rights derived under this lease by the mineral lessee, its agents, successors or assigns, shall not interfere with nor hinder the reasonable surface use by the Department of Natural Resources, its Offices or Commissions, as herein above reserved.

Applicant: R. W. ROBICHEAUX

Bidder	Cash Payment	Price/Acre	Rental	Oil	Gas	Other

Legend

- ▭ 08090022
- - - Active_Leases
- ▭ Counties

DOQQ2004

JEFFERSON PARISH

T16S - R23E

LAFOURCHE PARISH

BAYOU PEROT

P.O.B.

SL 18651

SL 402

T16S - R22E



TRACT 40189 - Terrebonne Parish, Louisiana

All of the lands now or formerly constituting the beds and bottoms of all water bodies of every nature and description as to which title is vested in the State of Louisiana, together with all islands arising therein and other lands formed by accretion or by reliction, where allowed by law, excepting tax adjudicated lands, and not presently under mineral lease on September 10, 2008, situated in Terrebonne Parish, Louisiana, and more particularly described as follows: Beginning at a point having Coordinates of X = 2,186,105.78 and Y = 320,013.42; thence Northerly approximately 13,010 feet to the Southernmost Southwest corner of State Lease No. 2234, as amended; thence Northeasterly approximately 3,922 feet along the Southern boundary of said State Lease No. 2234 to a point of intersection with a North-South line having a Coordinate of X = 2,189,807.08; thence South approximately 2,969 feet along said line to a point having Coordinates of X = 2,189,807.08 and Y = 331,316.70; thence East 12,333.51 feet to a point having Coordinates of X = 2,202,140.59 and Y = 331,316.70; thence South 11,303.28 feet to a point having Coordinates of X = 2,202,140.59 and Y = 320,013.42; thence West 16,034.81 feet to the point of beginning, **LESS AND EXCEPT** that portion, if any, of State Lease No. 2234, as amended, that may lie within the above described tract, (This tract includes only waterbottoms claimed and owned by the state and specifically excludes any land which the state may claim or own and to which the mineral rights are vested in the state), containing approximately **11 acres**, all as more particularly outlined on a plat on file in the Office of Mineral Resources, Department of Natural Resources. All bearings, distances and coordinates are based on Louisiana Coordinate System of 1927, (North or South Zone), where applicable.

NOTE: The above description of the Tract nominated for lease has been provided and corrected, where required, exclusively by the nomination party. Any mineral lease selected from this Tract and awarded by the Louisiana State Mineral Board shall be without warranty of any kind, either express, implied, or statutory, including, but not limited to, the implied warranties of merchantability and fitness for a particular purpose. Should the mineral lease awarded by the Louisiana State Mineral Board be subsequently modified, cancelled or abrogated due to the existence of conflicting leases, operating agreements, private claims or other future obligations or conditions which may affect all or any portion of the leased Tract, it shall not relieve the Lessee of the obligation to pay any bonus due thereon to the Louisiana State Mineral Board, nor shall the Louisiana State Mineral Board be obligated to refund any consideration paid by the Lessor prior to such modification, cancellation, or abrogation, including, but not limited to, bonuses, rentals and royalties.

NOTE: The State of Louisiana does hereby reserve, and this lease shall be subject to, the imprescriptible right of surface use in the nature of a servitude in favor of the Department of Natural Resources, including its Offices and Commissions, for the sole purpose of implementing, constructing, servicing and maintaining approved coastal zone management

and/or restoration projects. Utilization of any and all rights derived under this lease by the mineral lessee, its agents, successors or assigns, shall not interfere with nor hinder the reasonable surface use by the Department of Natural Resources, its Offices or Commissions, as herein above reserved.

Applicant: SOUTH COAST PRODUCTION COMPANY, LTD

Bidder	Cash Payment	Price/Acre	Rental	Oil	Gas	Other

Legend
08090019
Active_Leases
DOQQ2004

TERREBONNE PARISH

T17S - R17E

SL 2234

BAYOU BLACK

P.O.B.

3,000 Feet



TRACT 40190 - Jefferson Parish, Louisiana

All of the lands now or formerly constituting the beds and bottoms of all water bodies of every nature and description as to which title is vested in the State of Louisiana, together with all islands arising therein and other lands formed by accretion or by reliction, where allowed by law, excepting tax adjudicated lands, and not presently under mineral lease on September 10, 2008, situated in Jefferson Parish, Louisiana, and more particularly described as follows: Beginning at a point having Coordinates of X = 2,396,510.00 and Y = 319,975.18; thence East 5,701.50 feet to a point having Coordinates of X = 2,402,211.50 and Y = 319,975.18; thence South 7,921.09 feet to the Northernmost Northwest corner of State Lease No. 18727 having Coordinates of X = 2,402,211.50 and Y = 312,054.09; thence along the boundary of said State Lease No. 18727 the following courses: South 2,783.00 feet and West 2,676.69 feet to a corner having Coordinates of X = 2,399,534.81 and Y = 309,271.09; thence West 3,024.81 feet to a point having Coordinates of X = 2,396,510.00 and Y = 309,271.09; thence North 10,704.09 feet to the point of beginning, containing approximately **882 acres**, all as more particularly outlined on a plat on file in the Office of Mineral Resources, Department of Natural Resources. All bearings, distances and coordinates are based on Louisiana Coordinate System of 1927, (North or South Zone), where applicable.

NOTE: The above description of the Tract nominated for lease has been provided and corrected, where required, exclusively by the nomination party. Any mineral lease selected from this Tract and awarded by the Louisiana State Mineral Board shall be without warranty of any kind, either express, implied, or statutory, including, but not limited to, the implied warranties of merchantability and fitness for a particular purpose. Should the mineral lease awarded by the Louisiana State Mineral Board be subsequently modified, cancelled or abrogated due to the existence of conflicting leases, operating agreements, private claims or other future obligations or conditions which may affect all or any portion of the leased Tract, it shall not relieve the Lessee of the obligation to pay any bonus due thereon to the Louisiana State Mineral Board, nor shall the Louisiana State Mineral Board be obligated to refund any consideration paid by the Lessor prior to such modification, cancellation, or abrogation, including, but not limited to, bonuses, rentals and royalties.

NOTE: The State of Louisiana does hereby reserve, and this lease shall be subject to, the imprescriptible right of surface use in the nature of a servitude in favor of the Department of Natural Resources, including its Offices and Commissions, for the sole purpose of implementing, constructing, servicing and maintaining approved coastal zone management and/or restoration projects. Utilization of any and all rights derived under this lease by the mineral lessee, its agents, successors or assigns, shall not interfere with nor hinder the reasonable surface use by the Department of Natural Resources, its Offices or Commissions, as herein above reserved.

NOTE: The Department of Wildlife and Fisheries has designated certain areas in the coastal waters of the State of Louisiana as Oyster Seed Bed Areas. The exact location of those Seed Bed Areas must be obtained from the Department of Wildlife and Fisheries and any work done under a mineral lease from the State of Louisiana may necessarily be conducted in conformity with the rules and regulations promulgated by the said Department of Wildlife and Fisheries for Oyster Seed Bed Areas.

Applicant: DONNA SIMONS

Bidder	Cash Payment	Price/Acre	Rental	Oil	Gas	Other

Legend
08090135
Active_Leases
DOQQ2004

JEFFERSON PARISH

LONG BAY

BAYOU ST DENIS

SL 18727

P.O.B.

LITTLE LAKE



TRACT 40191 - Jefferson Parish, Louisiana

All of the lands now or formerly constituting the beds and bottoms of all water bodies of every nature and description as to which title is vested in the State of Louisiana, together with all islands arising therein and other lands formed by accretion or by reliction, where allowed by law, excepting tax adjudicated lands, and not presently under mineral lease on September 10, 2008, situated in Jefferson Parish, Louisiana, and more particularly described as follows: Beginning at a point on the West boundary of State Lease No. 16709, as amended, having Coordinates of X = 2,386,730.46 and Y = 319,975.18; thence South 2,593.33 feet along the West boundary of said State Lease No. 16709 to its Southwest corner having Coordinates of X = 2,386,730.46 and Y = 317,381.85; thence South 5,718.60 feet to a point on the Northern boundary of State Lease No. 10215, as amended, having Coordinates of X = 2,386,730.46 and Y = 311,663.25; thence along the boundary of said State Lease No. 10215 the following courses: South 76 degrees 00 minutes 48 seconds West 1,193.45 feet and South 00 degrees 35 minutes 15 seconds East 2,044.87 feet to the Northeast corner of State Lease No. 2383, as amended, having Coordinates of X = 2,385,593.36 and Y = 309,330.03; thence West 7,067.10 feet along the North boundary of said State Lease No. 2383 to the Southeast corner of State Lease No. 18010 having Coordinates of X = 2,378,526.26 and Y = 309,330.03; thence Northeasterly 1,579.10 feet along the boundary of said State Lease No. 18010 to the Southernmost corner of State Lease No. 18997, as amended, having Coordinates of X = 2,379,129.70 and Y = 310,789.28; thence along the boundary of said State Lease No. 18997 the following courses: Northeasterly along an arc to the left having a radius of 2,509.50 feet to a point having Coordinates of X = 2,379,264.88 and Y = 310,933.95; Northeasterly along an arc to the left having a radius of 2,323.50 feet to a point having Coordinates of X = 2,379,455.23 and Y = 311,203.19; Northeasterly along an arc to the left having a radius of 1,108.26 feet to a point having Coordinates of X = 2,379,515.09 and Y = 311,320.02; Northeasterly along an arc to the right having a radius of 6,450.00 feet to a point having Coordinates of X = 2,379,582.01 and Y = 311,410.52 and Northeasterly along an arc to the right having a radius of 630.00 feet to a point on the Southern boundary of State Lease No. 2453, as amended; thence Easterly, Northeasterly and Easterly along the Southern boundary of said State Lease No. 2453 to its Southeast corner having Coordinates of X = 2,385,310.49 and Y = 312,158.29; thence continuing along the boundary of said State Lease No. 2453 the following courses: North 4,931.90 feet; West 1,761.72 feet; North 02 degrees 22 minutes 40 seconds West 1,361.29 feet and North 02 degrees 22 minutes 35 seconds West 1,526.18 feet to its Northeast corner having Coordinates of X = 2,383,429.01 and Y = 319,975.18; thence East 3,301.45 feet to the point of beginning, **LESS AND EXCEPT** that portion, if any, of State Lease No. 18997, as amended, State Lease No. 18010 and State Lease No. 2453, as amended, that may lie within the above described tract, containing approximately **749 acres**, all as more particularly outlined on a plat on file in the Office of Mineral Resources, Department of Natural Resources. All bearings, distances and

coordinates are based on Louisiana Coordinate System of 1927, (North or South Zone), where applicable.

NOTE: The above description of the Tract nominated for lease has been provided and corrected, where required, exclusively by the nomination party. Any mineral lease selected from this Tract and awarded by the Louisiana State Mineral Board shall be without warranty of any kind, either express, implied, or statutory, including, but not limited to, the implied warranties of merchantability and fitness for a particular purpose. Should the mineral lease awarded by the Louisiana State Mineral Board be subsequently modified, cancelled or abrogated due to the existence of conflicting leases, operating agreements, private claims or other future obligations or conditions which may affect all or any portion of the leased Tract, it shall not relieve the Lessee of the obligation to pay any bonus due thereon to the Louisiana State Mineral Board, nor shall the Louisiana State Mineral Board be obligated to refund any consideration paid by the Lessor prior to such modification, cancellation, or abrogation, including, but not limited to, bonuses, rentals and royalties.

NOTE: The State of Louisiana does hereby reserve, and this lease shall be subject to, the imprescriptible right of surface use in the nature of a servitude in favor of the Department of Natural Resources, including its Offices and Commissions, for the sole purpose of implementing, constructing, servicing and maintaining approved coastal zone management and/or restoration projects. Utilization of any and all rights derived under this lease by the mineral lessee, its agents, successors or assigns, shall not interfere with nor hinder the reasonable surface use by the Department of Natural Resources, its Offices or Commissions, as herein above reserved.

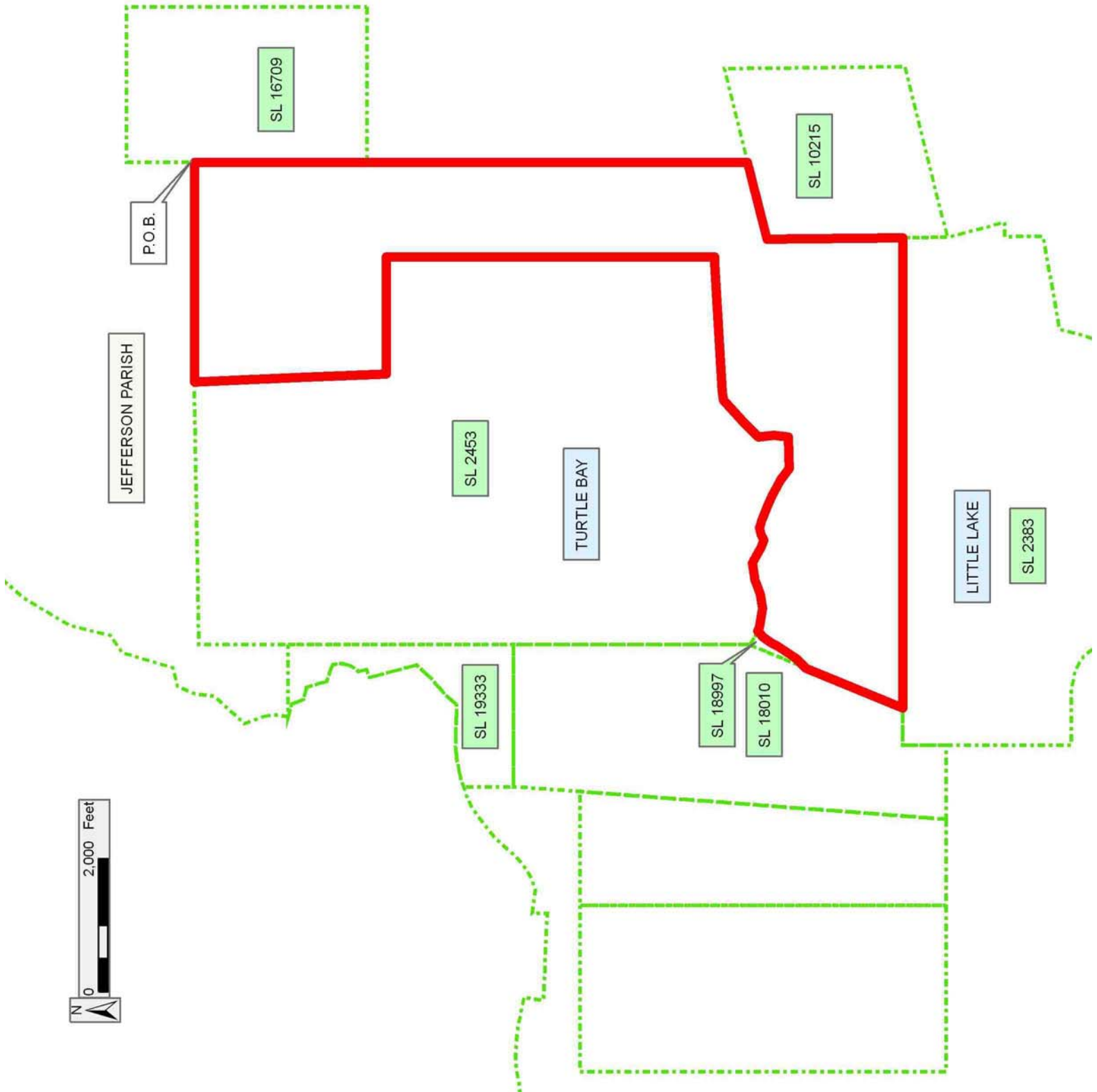
NOTE: The Department of Wildlife and Fisheries has designated certain areas in the coastal waters of the State of Louisiana as Oyster Seed Bed Areas. The exact location of those Seed Bed Areas must be obtained from the Department of Wildlife and Fisheries and any work done under a mineral lease from the State of Louisiana may necessarily be conducted in conformity with the rules and regulations promulgated by the said Department of Wildlife and Fisheries for Oyster Seed Bed Areas.

Bidder	Cash Payment	Price/Acre	Rental	Oil	Gas	Other

Applicant: DONNA SIMONS

Legend

- 08090137
- Active_Leases



TRACT 40192 - Jefferson Parish, Louisiana

All of the lands now or formerly constituting the beds and bottoms of all water bodies of every nature and description as to which title is vested in the State of Louisiana, together with all islands arising therein and other lands formed by accretion or by reliction, where allowed by law, excepting tax adjudicated lands, and not presently under mineral lease on September 10, 2008, situated in Jefferson Parish, Louisiana, and more particularly described as follows: Beginning at a point on the East boundary of State Lease No. 16709, as amended, having Coordinates of X = 2,389,057.43 and Y = 319,975.18; thence East 1,852.57 feet to a point having Coordinates of X = 2,390,910.00 and Y = 319,975.18; thence South 10,704.09 feet to a point having Coordinates of X = 2,390,910.00 and Y = 309,271.09; thence West 2,860.70 feet to a point on the Southern boundary of State Lease No. 10215, as amended having Coordinates of X = 2,388,049.30 and Y = 309,271.09; thence along the boundary of said State Lease No. 10215 the following courses and distances: North 76 degrees 00 minutes 48 seconds East 116.09 feet, North 00 degrees 35 minutes 15 seconds West 2,713.87 feet and South 76 degrees 00 minutes 48 seconds West 1,446.55 feet to a point on its Northern boundary having Coordinates of X = 2,386,730.46 and Y = 311,663.25; thence North 5,718.60 feet to the Southwest corner of said State Lease No. 16709 having Coordinates of X = 2,386,730.46 and Y = 317,381.85; thence along the boundary of said State Lease No. 16709 the following courses: East 2,326.97 feet and North 2,593.33 feet to the point of beginning, containing approximately **708 acres**, all as more particularly outlined on a plat on file in the Office of Mineral Resources, Department of Natural Resources. All bearings, distances and coordinates are based on Louisiana Coordinate System of 1927, (North or South Zone), where applicable.

NOTE: The above description of the Tract nominated for lease has been provided and corrected, where required, exclusively by the nomination party. Any mineral lease selected from this Tract and awarded by the Louisiana State Mineral Board shall be without warranty of any kind, either express, implied, or statutory, including, but not limited to, the implied warranties of merchantability and fitness for a particular purpose. Should the mineral lease awarded by the Louisiana State Mineral Board be subsequently modified, cancelled or abrogated due to the existence of conflicting leases, operating agreements, private claims or other future obligations or conditions which may affect all or any portion of the leased Tract, it shall not relieve the Lessee of the obligation to pay any bonus due thereon to the Louisiana State Mineral Board, nor shall the Louisiana State Mineral Board be obligated to refund any consideration paid by the Lessor prior to such modification, cancellation, or abrogation, including, but not limited to, bonuses, rentals and royalties.

NOTE: The State of Louisiana does hereby reserve, and this lease shall be subject to, the imprescriptible right of surface use in the nature of a servitude in favor of the Department of Natural Resources, including its Offices and Commissions, for the sole purpose of implementing,

constructing, servicing and maintaining approved coastal zone management and/or restoration projects. Utilization of any and all rights derived under this lease by the mineral lessee, its agents, successors or assigns, shall not interfere with nor hinder the reasonable surface use by the Department of Natural Resources, its Offices or Commissions, as herein above reserved.

NOTE: The Department of Wildlife and Fisheries has designated certain areas in the coastal waters of the State of Louisiana as Oyster Seed Bed Areas. The exact location of those Seed Bed Areas must be obtained from the Department of Wildlife and Fisheries and any work done under a mineral lease from the State of Louisiana may necessarily be conducted in conformity with the rules and regulations promulgated by the said Department of Wildlife and Fisheries for Oyster Seed Bed Areas.

Applicant: DONNA SIMONS

Bidder	Cash Payment	Price/Acre	Rental	Oil	Gas	Other

Legend
08090138
Active_Leases
DOQQ2004

JEFFERSON PARISH

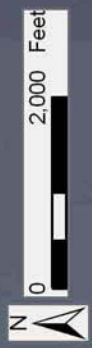
LITTLE LAKE

P.O.B.

SL 16709

SL 10215

TURTLE BAY



TRACT 40193 - Jefferson Parish, Louisiana

All of the lands now or formerly constituting the beds and bottoms of all water bodies of every nature and description as to which title is vested in the State of Louisiana, together with all islands arising therein and other lands formed by accretion or by reliction, where allowed by law, excepting tax adjudicated lands, and not presently under mineral lease on September 10, 2008, situated in Jefferson Parish, Louisiana, and more particularly described as follows: Beginning at a point having Coordinates of X = 2,390,910.00 and Y = 319,975.18; thence East 5,600.00 feet to a point having Coordinates of X = 2,396,510.00 and Y = 319,975.18; thence South 10,704.09 feet to a point having Coordinates of X = 2,396,510.00 and Y = 309,271.09; thence West 5,600.00 feet to a point having Coordinates of X = 2,390,910.00 and Y = 309,271.09; thence North 10,704.09 feet to the point of beginning, containing approximately **1,018 acres**, all as more particularly outlined on a plat on file in the Office of Mineral Resources, Department of Natural Resources. All bearings, distances and coordinates are based on Louisiana Coordinate System of 1927, (North or South Zone), where applicable.

NOTE: The above description of the Tract nominated for lease has been provided and corrected, where required, exclusively by the nomination party. Any mineral lease selected from this Tract and awarded by the Louisiana State Mineral Board shall be without warranty of any kind, either express, implied, or statutory, including, but not limited to, the implied warranties of merchantability and fitness for a particular purpose. Should the mineral lease awarded by the Louisiana State Mineral Board be subsequently modified, cancelled or abrogated due to the existence of conflicting leases, operating agreements, private claims or other future obligations or conditions which may affect all or any portion of the leased Tract, it shall not relieve the Lessee of the obligation to pay any bonus due thereon to the Louisiana State Mineral Board, nor shall the Louisiana State Mineral Board be obligated to refund any consideration paid by the Lessor prior to such modification, cancellation, or abrogation, including, but not limited to, bonuses, rentals and royalties.

NOTE: The State of Louisiana does hereby reserve, and this lease shall be subject to, the imprescriptible right of surface use in the nature of a servitude in favor of the Department of Natural Resources, including its Offices and Commissions, for the sole purpose of implementing, constructing, servicing and maintaining approved coastal zone management and/or restoration projects. Utilization of any and all rights derived under this lease by the mineral lessee, its agents, successors or assigns, shall not interfere with nor hinder the reasonable surface use by the Department of Natural Resources, its Offices or Commissions, as herein above reserved.

NOTE: The Department of Wildlife and Fisheries has designated certain areas in the coastal waters of the State of Louisiana as Oyster Seed Bed Areas. The exact location of those Seed Bed Areas must be obtained from

the Department of Wildlife and Fisheries and any work done under a mineral lease from the State of Louisiana may necessarily be conducted in conformity with the rules and regulations promulgated by the said Department of Wildlife and Fisheries for Oyster Seed Bed Areas.

Applicant: DONNA SIMONS

Bidder	Cash Payment	Price/Acre	Rental	Oil	Gas	Other



LONG BAY

BAYOU ST DENIS

JEFFERSON PARISH

P.O.B.

LITTLE LAKE

TURTLE BAY



TRACT 40194 - Portion of Blocks 4, and 5, Eugene Island Area, Revised, Iberia Parish, Louisiana

All of the lands now or formerly constituting the beds and bottoms of all water bodies of every nature and description as to which title is vested in the State of Louisiana, together with all islands arising therein and other lands formed by accretion or by reliction, where allowed by law, excepting tax adjudicated lands, and not presently under mineral lease on September 10, 2008, situated in Iberia Parish, Louisiana, and more particularly described as follows: Beginning at a point within Block 4, Eugene Island Area, Revised also being a point on the Southern boundary of State Lease No. 4236, as amended having Coordinates of X = 1,882,863.00 and Y = 288,625.50; thence along the boundary of said State Lease No. 4236 the following courses: North 80 degrees 56 minutes 01 seconds East 3,328.57 feet, North 85 degrees 29 minutes 10 seconds East 952.96 feet, North 87 degrees 36 minutes 51 seconds East 600.52 feet, South 86 degrees 44 minutes 53 seconds East 881.42 feet, South 77 degrees 44 minutes 07 seconds East 941.49 feet, South 75 degrees 22 minutes 45 seconds East 1,188.49 feet, South 72 degrees 28 minutes 28 seconds East 996.24 feet, South 59 degrees 02 minutes 10 seconds East 583.10 feet, South 57 degrees 10 minutes 17 seconds East 737.84 feet, South 61 degrees 19 minutes 37 seconds East 1,458.90 feet, South 68 degrees 57 minutes 45 seconds East 557.14 feet and South 76 degrees 40 minutes 32 seconds East 550.69 feet to it Southeast corner having Coordinates of X = 1,895,055.87 and Y = 286,673.09; thence East 0.55 feet to a point on the West boundary of State Lease No. 340, as amended having Coordinates of X = 1,895,056.42 and Y = 286,673.09; thence South 00 degrees 08 minutes 00 seconds West 6,452.11 feet along the Western boundary of said State Lease No. 340 to a point having Coordinates of X = 1,895,041.40 and Y = 280,221.00; thence West 12,178.40 feet to a point having Coordinates of X = 1,882,863.00 and Y = 280,221.00; thence North 8,404.50 feet to the point of beginning, containing approximately **2,322.41 acres**, all as more particularly outlined on a plat on file in the Office of Mineral Resources, Department of Natural Resources. All bearings, distances and coordinates are based on Louisiana Coordinate System of 1927, (North or South Zone), where applicable.

NOTE: The above description of the Tract nominated for lease has been provided and corrected, where required, exclusively by the nomination party. Any mineral lease selected from this Tract and awarded by the Louisiana State Mineral Board shall be without warranty of any kind, either express, implied, or statutory, including, but not limited to, the implied warranties of merchantability and fitness for a particular purpose. Should the mineral lease awarded by the Louisiana State Mineral Board be subsequently modified, cancelled or abrogated due to the existence of conflicting leases, operating agreements, private claims or other future obligations or conditions which may affect all or any portion of the leased Tract, it shall not relieve the Lessee of the obligation to pay any bonus due thereon to the Louisiana State Mineral Board, nor shall the Louisiana State Mineral Board be obligated to refund any consideration

paid by the Lessor prior to such modification, cancellation, or abrogation, including, but not limited to, bonuses, rentals and royalties.

NOTE: The above described tract may be in the vicinity of existing shell reefs where drilling and dredging operations must be conducted in strict conformity with the regulations adopted by the Louisiana Department of Wildlife and Fisheries and/or the U.S. Corps of Engineers, U.S. Army.




NOTE: The State of Louisiana does hereby reserve, and this lease shall be subject to, the imprescriptible right of surface use in the nature of a servitude in favor of the Department of Natural Resources, including its Offices and Commissions, for the sole purpose of implementing, constructing, servicing and maintaining approved coastal zone management and/or restoration projects. Utilization of any and all rights derived under this lease by the mineral lessee, its agents, successors or assigns, shall not interfere with nor hinder the reasonable surface use by the Department of Natural Resources, its Offices or Commissions, as herein above reserved.

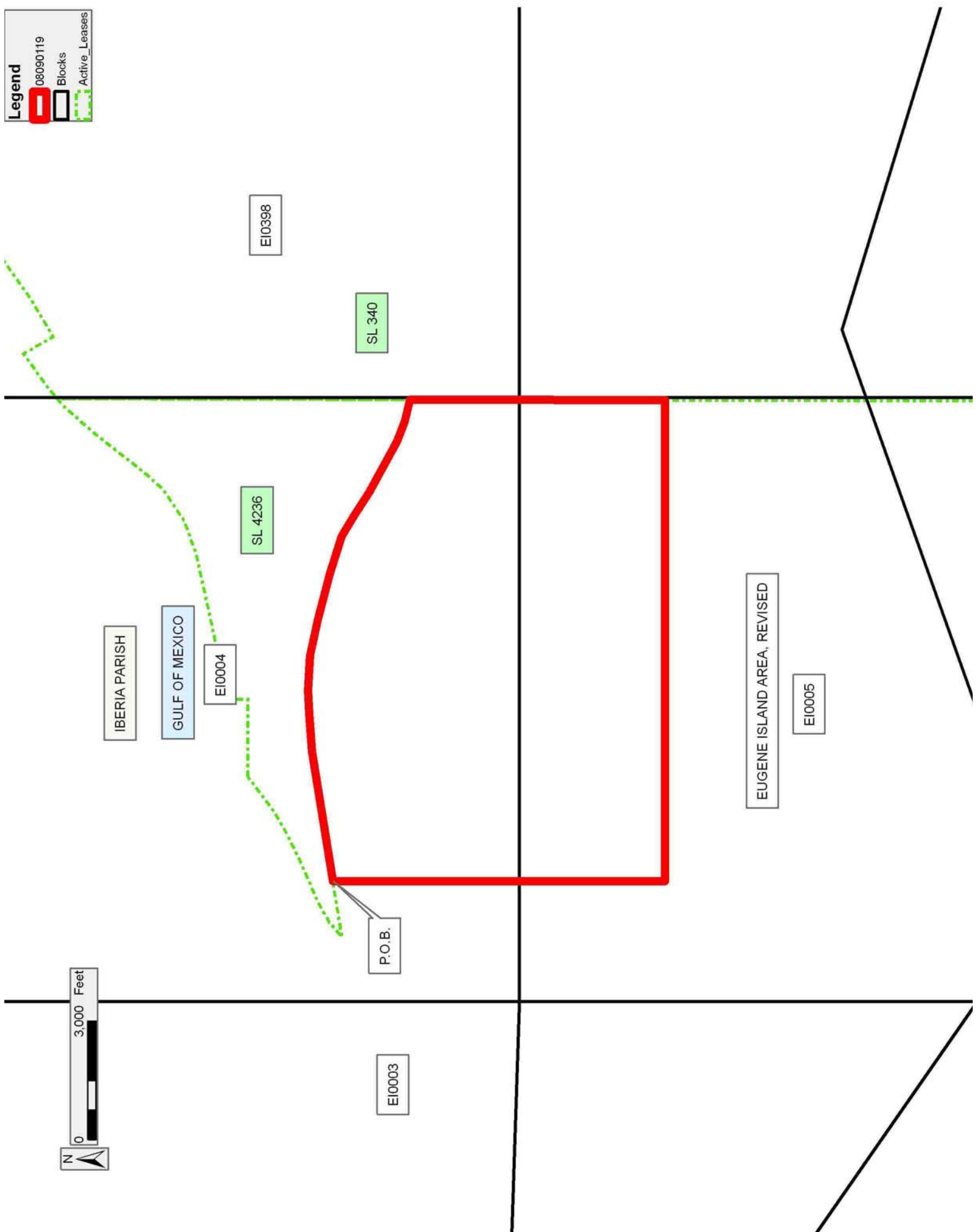
NOTE: The Department of Wildlife and Fisheries has designated certain areas in the coastal waters of the State of Louisiana as Oyster Seed Bed Areas. The exact location of those Seed Bed Areas must be obtained from the Department of Wildlife and Fisheries and any work done under a mineral lease from the State of Louisiana may necessarily be conducted in conformity with the rules and regulations promulgated by the said Department of Wildlife and Fisheries for Oyster Seed Bed Areas.

Applicant: PATRICK L. DONOHUE PETROLEUM PROPERTIES, INC.

Bidder	Cash Payment	Price/Acre	Rental	Oil	Gas	Other

Legend

-  08090119
-  Blocks
-  Active_Leases



TRACT 40195 - Portion of Blocks 3, 4, 5, and 6, Eugene Island Area, Revised, Iberia Parish, Louisiana

All of the lands now or formerly constituting the beds and bottoms of all water bodies of every nature and description as to which title is vested in the State of Louisiana, together with all islands arising therein and other lands formed by accretion or by reliction, where allowed by law, excepting tax adjudicated lands, and not presently under mineral lease on September 10, 2008, situated in Iberia Parish, Louisiana, and more particularly described as follows: Beginning at a point within Block 3, Eugene Island Area, Revised having Coordinates of X = 1,868,403.21 and Y = 284,995.00; thence East 14,459.79 feet to a point within Block 4 having Coordinates of X = 1,882,863.00 and Y = 284,995.00; thence South 7,018.43 feet to a point within Block 5 having Coordinates of X = 1,882,863.00 and Y = 277,976.57; thence West 14,459.79 feet to a point within Block 6 having Coordinates of X = 1,868,403.21 and Y = 277,976.57; thence North 7,018.43 feet to the point of beginning, containing approximately **2,329.78 acres**, all as more particularly outlined on a plat on file in the Office of Mineral Resources, Department of Natural Resources. All bearings, distances and coordinates are based on Louisiana Coordinate System of 1927, (North or South Zone), where applicable.

NOTE: The above description of the Tract nominated for lease has been provided and corrected, where required, exclusively by the nomination party. Any mineral lease selected from this Tract and awarded by the Louisiana State Mineral Board shall be without warranty of any kind, either express, implied, or statutory, including, but not limited to, the implied warranties of merchantability and fitness for a particular purpose. Should the mineral lease awarded by the Louisiana State Mineral Board be subsequently modified, cancelled or abrogated due to the existence of conflicting leases, operating agreements, private claims or other future obligations or conditions which may affect all or any portion of the leased Tract, it shall not relieve the Lessee of the obligation to pay any bonus due thereon to the Louisiana State Mineral Board, nor shall the Louisiana State Mineral Board be obligated to refund any consideration paid by the Lessor prior to such modification, cancellation, or abrogation, including, but not limited to, bonuses, rentals and royalties.

NOTE: The Office of Mineral Resources will require a minimum bonus of \$300 per acre and a minimum royalty of 25%.

NOTE: The above described tract may be in the vicinity of existing shell reefs where drilling and dredging operations must be conducted in strict conformity with the regulations adopted by the Louisiana Department of Wildlife and Fisheries and/or the U.S. Corps of Engineers, U.S. Army.

NOTE: The State of Louisiana does hereby reserve, and this lease shall be subject to, the imprescriptible right of surface use in the nature of a servitude in favor of the Department of Natural Resources, including its Offices and Commissions, for the sole purpose of implementing,




constructing, servicing and maintaining approved coastal zone management and/or restoration projects. Utilization of any and all rights derived under this lease by the mineral lessee, its agents, successors or assigns, shall not interfere with nor hinder the reasonable surface use by the Department of Natural Resources, its Offices or Commissions, as herein above reserved.

NOTE: The Department of Wildlife and Fisheries has designated certain areas in the coastal waters of the State of Louisiana as Oyster Seed Bed Areas. The exact location of those Seed Bed Areas must be obtained from the Department of Wildlife and Fisheries and any work done under a mineral lease from the State of Louisiana may necessarily be conducted in conformity with the rules and regulations promulgated by the said Department of Wildlife and Fisheries for Oyster Seed Bed Areas.

Applicant: PATRICK L. DONOHUE PETROLEUM PROPERTIES, INC.

Bidder	Cash Payment	Price/Acre	Rental	Oil	Gas	Other

Legend

-  08090120
-  Blocks
-  Active_Leases

