

TRACT 40166 - Sabine Parish, Louisiana

All of the lands now or formerly constituting the beds and bottoms of all water bodies of every nature and description as to which title is vested in the State of Louisiana, together with all islands arising therein and other lands formed by accretion or by reliction, where allowed by law, excepting tax adjudicated lands, and not presently under mineral lease on September 10, 2008, situated in Sabine Parish, Louisiana, and more particularly described as follows: Beginning at a point having Coordinates of X = 1,622,715.00 and Y = 346,697.50; thence East 5,500.00 feet to a point having Coordinates of X = 1,628,215.00 and Y = 346,697.50; thence South 11,000.00 feet to a point having Coordinates of X = 1,628,215.00 and Y = 335,697.50; thence West 5,500.00 feet to a point having Coordinates of X = 1,622,715.00 and Y = 335,697.50; thence North 11,000.00 feet to the point of beginning, containing approximately **11 acres**, all as more particularly outlined on a plat on file in the Office of Mineral Resources, Department of Natural Resources. All bearings, distances and coordinates are based on Louisiana Coordinate System of 1927, (North or South Zone), where applicable.

NOTE: The above description of the Tract nominated for lease has been provided and corrected, where required, exclusively by the nomination party. Any mineral lease selected from this Tract and awarded by the Louisiana State Mineral Board shall be without warranty of any kind, either express, implied, or statutory, including, but not limited to, the implied warranties of merchantability and fitness for a particular purpose. Should the mineral lease awarded by the Louisiana State Mineral Board be subsequently modified, cancelled or abrogated due to the existence of conflicting leases, operating agreements, private claims or other future obligations or conditions which may affect all or any portion of the leased Tract, it shall not relieve the Lessee of the obligation to pay any bonus due thereon to the Louisiana State Mineral Board, nor shall the Louisiana State Mineral Board be obligated to refund any consideration paid by the Lessor prior to such modification, cancellation, or abrogation, including, but not limited to, bonuses, rentals and royalties.

Applicant: THEOPHILUS OIL GAS & LAND SERVICES, LLC

Bidder	Cash Payment	Price/Acre	Rental	Oil	Gas	Other

SABINE PARISH

TTN - R13W

BAYOU SAN MIGUEL

P.O.B.



3,000 Feet



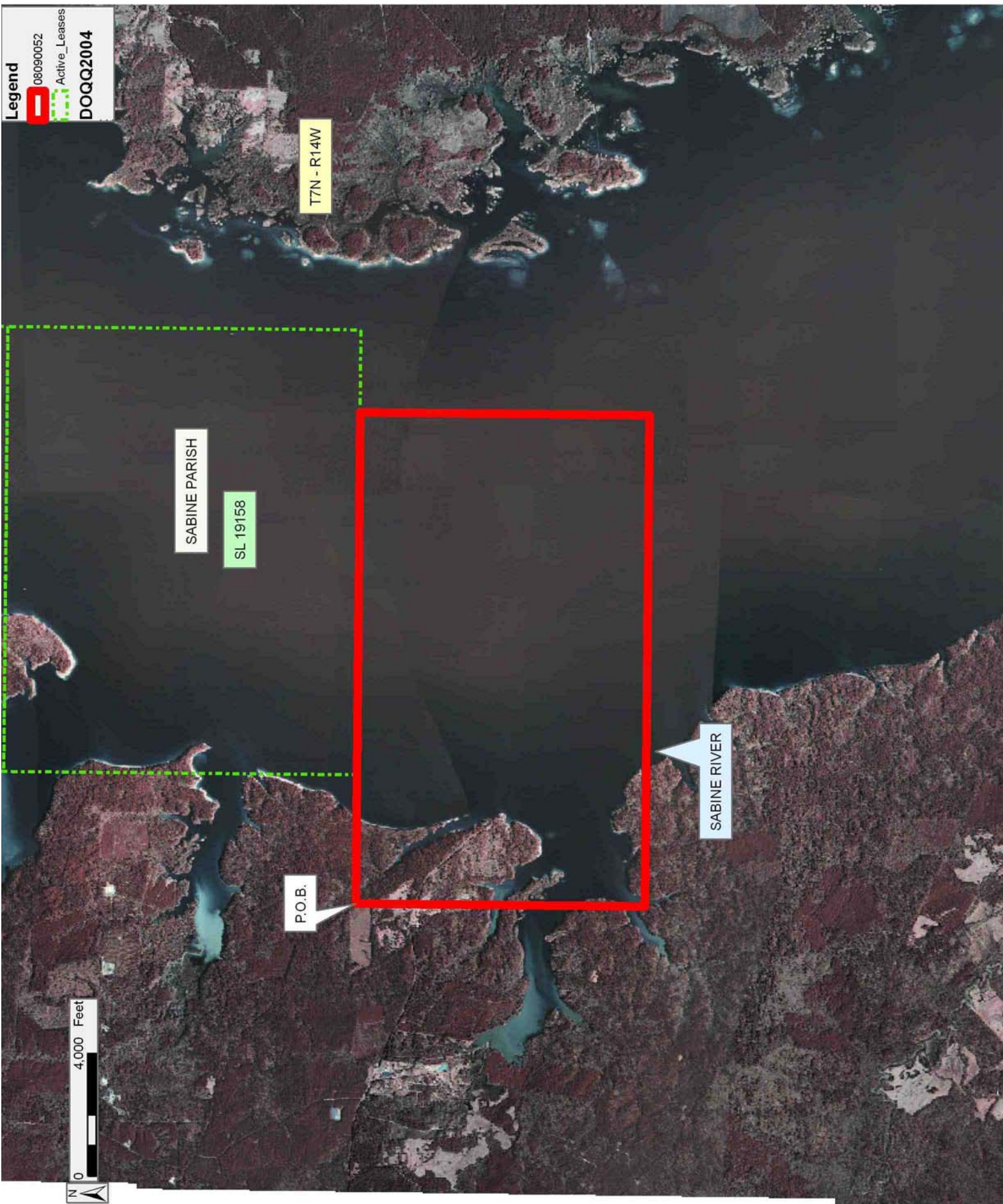
TRACT 40167 - Sabine Parish, Louisiana

All of the lands now or formerly constituting the beds and bottoms of all water bodies of every nature and description as to which title is vested in the State of Louisiana, together with all islands arising therein and other lands formed by accretion or by reliction, where allowed by law, excepting tax adjudicated lands, and not presently under mineral lease on September 10, 2008, situated in Sabine Parish, Louisiana, and more particularly described as follows: Beginning at a point having Coordinates of X = 1,580,210.00 and Y = 345,250.00; thence East 4,190.00 feet to the Southwest corner of State Lease No. 19158 having Coordinates of X = 1,584,400.00 and Y = 345,250.00; thence East 11,810.00 feet along the South boundary of said State Lease No. 19158 to a point having Coordinates of X = 1,596,210.00 and Y = 345,250.00; thence South 9,425.00 feet to a point having Coordinates of X = 1,596,210.00 and Y = 335,825.00; thence West 16,000.00 feet to a point having Coordinates of X = 1,580,210.00 and Y = 335,825.00; thence North 9,425.00 feet to the point of beginning, containing approximately **40 acres, LESS AND EXCEPT** that portion thereof, if any, located West of the boundary line between the States of Texas and Louisiana as determined by the report of the Special Master and adjudicated by the Supreme Court of the United States in litigation styled **Texas v. Louisiana, et al No. 36 Original**, or as otherwise approved by said court, all as more particularly outlined on a plat on file in the Office of Mineral Resources, Department of Natural Resources. All bearings, distances and coordinates are based on Louisiana Coordinate System of 1927, (North or South Zone), where applicable.

NOTE: The above description of the Tract nominated for lease has been provided and corrected, where required, exclusively by the nomination party. Any mineral lease selected from this Tract and awarded by the Louisiana State Mineral Board shall be without warranty of any kind, either express, implied, or statutory, including, but not limited to, the implied warranties of merchantability and fitness for a particular purpose. Should the mineral lease awarded by the Louisiana State Mineral Board be subsequently modified, cancelled or abrogated due to the existence of conflicting leases, operating agreements, private claims or other future obligations or conditions which may affect all or any portion of the leased Tract, it shall not relieve the Lessee of the obligation to pay any bonus due thereon to the Louisiana State Mineral Board, nor shall the Louisiana State Mineral Board be obligated to refund any consideration paid by the Lessor prior to such modification, cancellation, or abrogation, including, but not limited to, bonuses, rentals and royalties.

Applicant: THEOPHILUS OIL GAS & LAND SERVICES, LLC

Bidder	Cash Payment	Price/Acre	Rental	Oil	Gas	Other



Legend
08090052
Active_Leases
DOQQ2004

T7N - R14W

SABINE PARISH

SL 19158

SABINE RIVER

P.O.B.

0 4,000 Feet



TRACT 40168 - Lasalle Parish, Louisiana

All of the lands now or formerly constituting the beds and bottoms of all water bodies of every nature and description as to which title is vested in the State of Louisiana, together with all islands arising therein and other lands formed by accretion or by reliction, where allowed by law, excepting tax adjudicated lands, and not presently under mineral lease on September 10, 2008, situated in Lasalle Parish, Louisiana, and more particularly described as follows: Beginning at a point having Coordinates of X = 2,140,975.08 and Y = 341,435.71; thence South 62 degrees 58 minutes 32 seconds East 4,886.92 feet to a point having Coordinates of X = 2,145,328.40 and Y = 339,215.23; thence South 44 degrees 08 minutes 44 seconds West 18,475.67 feet to a point having Coordinates of X = 2,132,460.43 and Y = 325,957.57; thence North 53 degrees 22 minutes 22 seconds West 7,299.87 feet to a point having Coordinates of X = 2,126,602.05 and Y = 330,312.73; thence North 52 degrees 15 minutes 52 seconds East 18,174.29 feet to the point of beginning, containing approximately **677 acres**, all as more particularly outlined on a plat on file in the Office of Mineral Resources, Department of Natural Resources. All bearings, distances and coordinates are based on Louisiana Coordinate System of 1927, (North or South Zone), where applicable.

NOTE: The above description of the Tract nominated for lease has been provided and corrected, where required, exclusively by the nomination party. Any mineral lease selected from this Tract and awarded by the Louisiana State Mineral Board shall be without warranty of any kind, either express, implied, or statutory, including, but not limited to, the implied warranties of merchantability and fitness for a particular purpose. Should the mineral lease awarded by the Louisiana State Mineral Board be subsequently modified, cancelled or abrogated due to the existence of conflicting leases, operating agreements, private claims or other future obligations or conditions which may affect all or any portion of the leased Tract, it shall not relieve the Lessee of the obligation to pay any bonus due thereon to the Louisiana State Mineral Board, nor shall the Louisiana State Mineral Board be obligated to refund any consideration paid by the Lessor prior to such modification, cancellation, or abrogation, including, but not limited to, bonuses, rentals and royalties.

Bidder	Cash Payment	Price/Acre	Rental	Oil	Gas	Other

Applicant: TRIDIMENSION ENERGY, LP

Legend
08090143
Counties
DOQQ2004

DRY RIVER

P.O.B.

LA SALLE PARISH

T7N - R4E

T7N - R4E

CATAHOULA LAKE



TRACT 40169 - Lasalle Parish, Louisiana

All of the lands now or formerly constituting the beds and bottoms of all water bodies of every nature and description as to which title is vested in the State of Louisiana, together with all islands arising therein and other lands formed by accretion or by reliction, where allowed by law, excepting tax adjudicated lands, and not presently under mineral lease on September 10, 2008, situated in Lasalle Parish, Louisiana, and more particularly described as follows: Beginning at a point having Coordinates of X = 2,145,328.40 and Y = 339,215.23; thence South 25 degrees 06 minutes 08 seconds West 18,163.99 feet to a point having Coordinates of X = 2,137,622.59 and Y = 322,766.80; thence North 58 degrees 16 minutes 46 seconds West 6,068.68 feet to a point having Coordinates of X = 2,132,460.43 and Y = 325,957.57; thence North 44 degrees 08 minutes 44 seconds East 18,475.67 feet to the point of beginning, containing approximately **1,160 acres**, all as more particularly outlined on a plat on file in the Office of Mineral Resources, Department of Natural Resources. All bearings, distances and coordinates are based on Louisiana Coordinate System of 1927, (North or South Zone), where applicable.

NOTE: The above description of the Tract nominated for lease has been provided and corrected, where required, exclusively by the nomination party. Any mineral lease selected from this Tract and awarded by the Louisiana State Mineral Board shall be without warranty of any kind, either express, implied, or statutory, including, but not limited to, the implied warranties of merchantability and fitness for a particular purpose. Should the mineral lease awarded by the Louisiana State Mineral Board be subsequently modified, cancelled or abrogated due to the existence of conflicting leases, operating agreements, private claims or other future obligations or conditions which may affect all or any portion of the leased Tract, it shall not relieve the Lessee of the obligation to pay any bonus due thereon to the Louisiana State Mineral Board, nor shall the Louisiana State Mineral Board be obligated to refund any consideration paid by the Lessor prior to such modification, cancellation, or abrogation, including, but not limited to, bonuses, rentals and royalties.

Applicant: TRIDIMENSION ENERGY, LP

Bidder	Cash Payment	Price/Acre	Rental	Oil	Gas	Other

LA SALLE PARISH

P.O.B.

T7N - R4E

CATAHOULA LAKE

4,000 Feet



TRACT 40170 - Lasalle Parish, Louisiana

All of the lands now or formerly constituting the beds and bottoms of all water bodies of every nature and description as to which title is vested in the State of Louisiana, together with all islands arising therein and other lands formed by accretion or by reliction, where allowed by law, excepting tax adjudicated lands, and not presently under mineral lease on September 10, 2008, situated in Lasalle Parish, Louisiana, and more particularly described as follows: Beginning at a point having Coordinates of X = 2,145,328.40 and Y = 339,215.23; thence South 59 degrees 25 minutes 52 seconds East 6,152.89 feet to a point having Coordinates of X = 2,150,626.15 and Y = 336,086.02; thence South 17 degrees 05 minutes 27 seconds West 18,299.61 feet to a point having Coordinates of X = 2,145,248.13 and Y = 318,594.51; thence North 61 degrees 18 minutes 54 seconds West 8,692.35 feet to a point having Coordinates of X = 2,137,622.59 and Y = 322,766.80; thence North 25 degrees 06 minutes 08 seconds East 18,163.99 feet to the point of beginning, containing approximately **1,157 acres**, all as more particularly outlined on a plat on file in the Office of Mineral Resources, Department of Natural Resources. All bearings, distances and coordinates are based on Louisiana Coordinate System of 1927, (North or South Zone), where applicable.

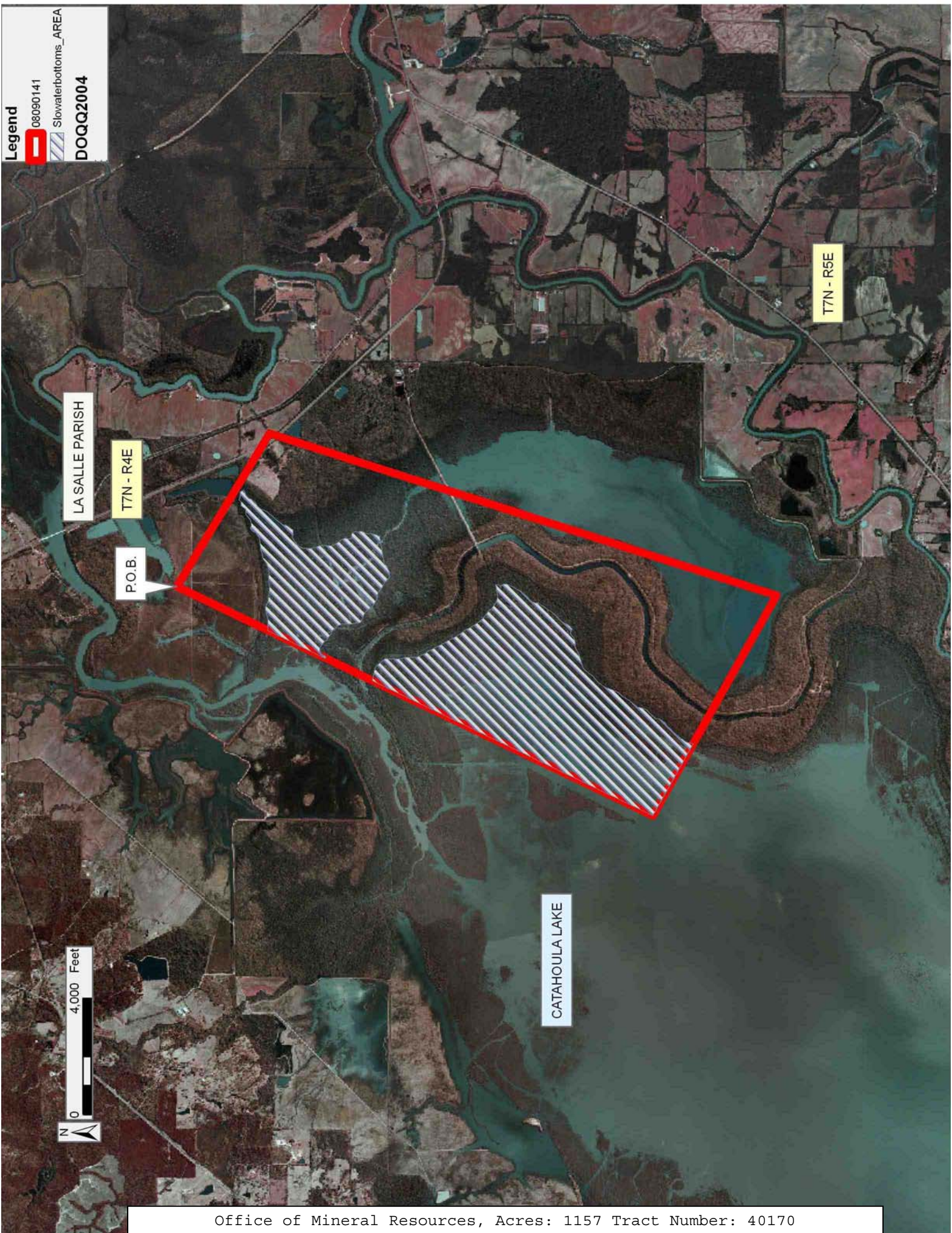
NOTE: The above description of the Tract nominated for lease has been provided and corrected, where required, exclusively by the nomination party. Any mineral lease selected from this Tract and awarded by the Louisiana State Mineral Board shall be without warranty of any kind, either express, implied, or statutory, including, but not limited to, the implied warranties of merchantability and fitness for a particular purpose. Should the mineral lease awarded by the Louisiana State Mineral Board be subsequently modified, cancelled or abrogated due to the existence of conflicting leases, operating agreements, private claims or other future obligations or conditions which may affect all or any portion of the leased Tract, it shall not relieve the Lessee of the obligation to pay any bonus due thereon to the Louisiana State Mineral Board, nor shall the Louisiana State Mineral Board be obligated to refund any consideration paid by the Lessor prior to such modification, cancellation, or abrogation, including, but not limited to, bonuses, rentals and royalties.

Bidder	Cash Payment	Price/Acre	Rental	Oil	Gas	Other

Applicant: TRIDIMENSION ENERGY, LP

Legend

- 08090141
- Slowwaterbottoms_AREA
- DOQQ2004



LA SALLE PARISH

T7N - R4E

P.O.B.

T7N - R5E

CATAHOULA LAKE

TRACT 40171 - Sabine Parish, Louisiana

All of the lands now or formerly constituting the beds and bottoms of all water bodies of every nature and description as to which title is vested in the State of Louisiana, together with all islands arising therein and other lands formed by accretion or by reliction, where allowed by law, excepting tax adjudicated lands, and not presently under mineral lease on September 10, 2008, situated in Sabine Parish, Louisiana, and more particularly described as follows: Beginning at a point having Coordinates of X = 1,585,490.00 and Y = 335,825.00; thence East 16,000.00 feet to a point having Coordinates of X = 1,601,490.00 and Y = 335,825.00; thence South 15,840.00 feet to a point having Coordinates of X = 1,601,490.00 and Y = 319,985.00; thence West 16,000.00 feet to a point having Coordinates of X = 1,585,490.00 and Y = 319,985.00; thence North 15,840.00 feet to the point of beginning, (This tract includes only waterbottoms claimed and owned by the state and specifically excludes any land which the state may claim or own and to which the mineral rights are vested in the state), containing approximately **85 acres, LESS AND EXCEPT** that portion thereof, if any, located West of the boundary line between the States of Texas and Louisiana as determined by the report of the Special Master and adjudicated by the Supreme Court of the United States in litigation styled **Texas v. Louisiana, et al No. 36 Original**, or as otherwise approved by said court, all as more particularly outlined on a plat on file in the Office of Mineral Resources, Department of Natural Resources. All bearings, distances and coordinates are based on Louisiana Coordinate System of 1927, (North or South Zone), where applicable.

NOTE: The above description of the Tract nominated for lease has been provided and corrected, where required, exclusively by the nomination party. Any mineral lease selected from this Tract and awarded by the Louisiana State Mineral Board shall be without warranty of any kind, either express, implied, or statutory, including, but not limited to, the implied warranties of merchantability and fitness for a particular purpose. Should the mineral lease awarded by the Louisiana State Mineral Board be subsequently modified, cancelled or abrogated due to the existence of conflicting leases, operating agreements, private claims or other future obligations or conditions which may affect all or any portion of the leased Tract, it shall not relieve the Lessee of the obligation to pay any bonus due thereon to the Louisiana State Mineral Board, nor shall the Louisiana State Mineral Board be obligated to refund any consideration paid by the Lessor prior to such modification, cancellation, or abrogation, including, but not limited to, bonuses, rentals and royalties.

Applicant: THEOPHILUS OIL GAS & LAND SERVICES, LLC

Bidder	Cash Payment	Price/Acre	Rental	Oil	Gas	Other

SABINE PARISH

T7N - R14W

P.O.B.

SABINE RIVER

0 4,000 Feet



TRACT 40172 - Sabine Parish, Louisiana

All of the lands now or formerly constituting the beds and bottoms of all water bodies of every nature and description as to which title is vested in the State of Louisiana, together with all islands arising therein and other lands formed by accretion or by reliction, where allowed by law, excepting tax adjudicated lands, and not presently under mineral lease on September 10, 2008, situated in Sabine Parish, Louisiana, and more particularly described as follows: Beginning at a point having Coordinates of X = 1,612,050.00 and Y = 335,697.50; thence East 16,165.00 feet to a point having Coordinates of X = 1,628,215.00 and Y = 335,697.50; thence South 15,967.50 feet to a point having Coordinates of X = 1,628,215.00 and Y = 319,730.00; thence West 16,165.00 feet to a point having Coordinates of X = 1,612,050.00 and Y = 319,730.00; thence North 15,967.50 feet to the point of beginning, (This lease includes only waterbottoms claimed and owned by the state and specifically excludes any land which the state may claim or own and to which the mineral rights are vested in the state), containing approximately **53 acres**, all as more particularly outlined on a plat on file in the Office of Mineral Resources, Department of Natural Resources. All bearings, distances and coordinates are based on Louisiana Coordinate System of 1927, (North or South Zone), where applicable.

NOTE: The above description of the Tract nominated for lease has been provided and corrected, where required, exclusively by the nomination party. Any mineral lease selected from this Tract and awarded by the Louisiana State Mineral Board shall be without warranty of any kind, either express, implied, or statutory, including, but not limited to, the implied warranties of merchantability and fitness for a particular purpose. Should the mineral lease awarded by the Louisiana State Mineral Board be subsequently modified, cancelled or abrogated due to the existence of conflicting leases, operating agreements, private claims or other future obligations or conditions which may affect all or any portion of the leased Tract, it shall not relieve the Lessee of the obligation to pay any bonus due thereon to the Louisiana State Mineral Board, nor shall the Louisiana State Mineral Board be obligated to refund any consideration paid by the Lessor prior to such modification, cancellation, or abrogation, including, but not limited to, bonuses, rentals and royalties.

Bidder	Cash Payment	Price/Acre	Rental	Oil	Gas	Other

Applicant: THEOPHILUS OIL GAS & LAND SERVICES, LLC

Legend
08090051
DOQQ2004

BAYOU SAN MIGUEL

SABINE PARISH

T7N - R13W

P.O.B.

0 4,000 Feet

T6N - R14W

TRACT 40173 - Lasalle Parish, Louisiana

All of the lands now or formerly constituting the beds and bottoms of all water bodies of every nature and description as to which title is vested in the State of Louisiana, together with all islands arising therein and other lands formed by accretion or by reliction, where allowed by law, excepting tax adjudicated lands, and not presently under mineral lease on September 10, 2008, situated in Lasalle Parish, Louisiana, and more particularly described as follows: Beginning at a point having Coordinates of X = 2,126,602.05 and Y = 330,312.73; thence South 53 degrees 22 minutes 22 seconds East 7,299.87 feet to a point having Coordinates of X = 2,132,460.43 and Y = 325,957.57; thence South 46 degrees 51 minutes 18 seconds West approximately 14,978 feet to a point of intersection with the Northern boundary of a portion of State Lease No. 1461, as amended; thence Westerly approximately 2,532 feet along the Northern boundary of said portion of State Lease No. 1461 to its Northwest corner; thence Westerly approximately 2,785 feet to the Southeast corner of a portion of said State Lease No. 1461; thence Northerly, Westerly and Southerly along the boundary of said portion of State Lease No. 1461 to its Southwest corner; thence Northwesterly approximately 3,081 feet on a straight line to a point having Coordinates of X = 2,112,844.70 and Y = 318,034.41; thence North 48 degrees 15 minutes 05 seconds East 18,439.68 feet to the point of beginning, **LESS AND EXCEPT** all of State Lease No. 18951 and State Lease No. 16827, as amended, that lies within the above described tract, being more fully described as follows: Commencing at the point of beginning of the above described tract having Coordinates of X = 2,126,602.05 and Y = 330,312.73; thence South 38 degrees 49 minutes 56 seconds West 10,337.48 feet to the Northwest corner of State Lease No. 18951 having Coordinates of X = 2,120,120.00 and Y = 322,260.00; thence East 659.88 feet along the North boundary of said State Lease No. 18951 to the Southwest corner of the Western portion of State Lease No. 16827, as amended, having Coordinates of X = 2,120,779.88 and Y = 322,260.00; thence along the boundary of said portion of State Lease No. 16827 the following courses: North 37.74 feet to a point having Coordinates of X = 2,120,779.88 and Y = 322,297.74 and South 78 degrees 40 minutes 04 seconds East 192.06 feet to its Southeast corner, also being a point on the North boundary of said State Lease No. 18951 having Coordinates of X = 2,120,968.20 and Y = 322,260.00; thence East 471.80 feet to the Southwest corner of the Eastern portion of said State Lease No. 16827 having Coordinates of X = 2,121,440.00 and Y = 322,260.00; thence along the boundary of said portion of State Lease No. 16827 the following courses: North 750.00 feet to a point having Coordinates of X = 2,121,440.00 and Y = 323,010.00; North 25 degrees 15 minutes 51 seconds East 630.29 feet to a point having Coordinates of X = 2,121,709.00 and Y = 323,580.00; North 28 degrees 00 minutes 01 seconds East 328.00 feet to a point having Coordinates of X = 2,121,862.99 and Y = 323,869.61; South 76 degrees 20 minutes 00 seconds East 700.00 feet to a point having Coordinates of X = 2,122,543.17 and Y = 323,704.22; South 60 degrees 11 minutes 31 seconds East 249.89 feet to a point having Coordinates of X = 2,122,760.00 and Y = 323,580.00 and South 1,320.00 feet to its Southeast corner, also being a point on the North

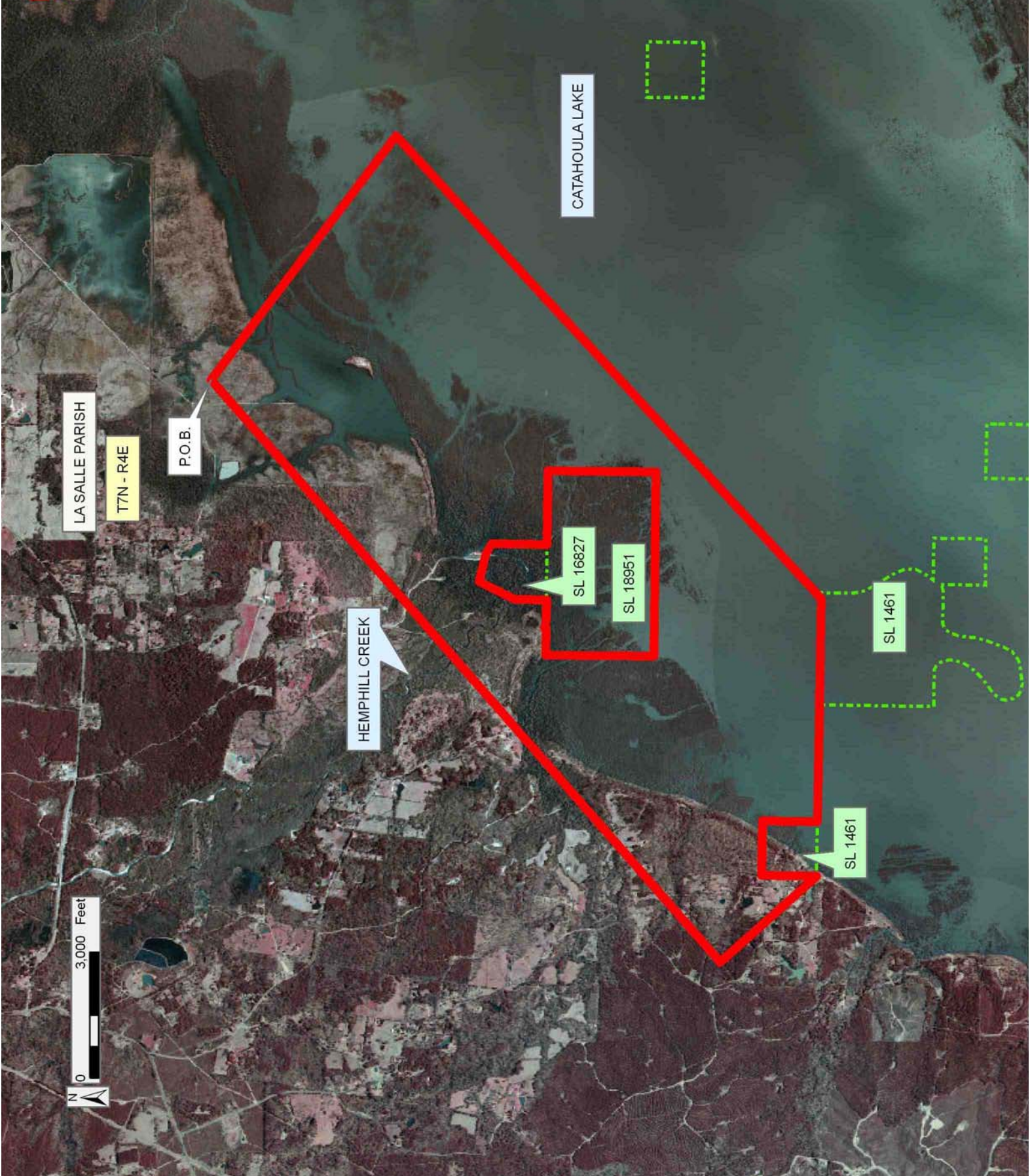
boundary of said State Lease No. 18951 having Coordinates of X = 2,122,760.00 and Y = 322,260.00; thence along the boundary of said State Lease No. 18951 the following courses: East 1,749.69 feet to a point having Coordinates of X = 2,124,509.69 and Y = 322,260.00; South 2,576.02 feet to a point having Coordinates of X = 2,124,509.69 and Y = 319,683.99; West 4,389.69 feet to a point having Coordinates of X = 2,120,120.00 and Y = 319,683.99 and North 2,576.01 feet back to its Northwest corner; tract containing approximately **1,743 acres**, all as more particularly outlined on a plat on file in the Office of Mineral Resources, Department of Natural Resources. All bearings, distances and coordinates are based on Louisiana Coordinate System of 1927, (North or South Zone), where applicable.

NOTE: The above description of the Tract nominated for lease has been provided and corrected, where required, exclusively by the nomination party. Any mineral lease selected from this Tract and awarded by the Louisiana State Mineral Board shall be without warranty of any kind, either express, implied, or statutory, including, but not limited to, the implied warranties of merchantability and fitness for a particular purpose. Should the mineral lease awarded by the Louisiana State Mineral Board be subsequently modified, cancelled or abrogated due to the existence of conflicting leases, operating agreements, private claims or other future obligations or conditions which may affect all or any portion of the leased Tract, it shall not relieve the Lessee of the obligation to pay any bonus due thereon to the Louisiana State Mineral Board, nor shall the Louisiana State Mineral Board be obligated to refund any consideration paid by the Lessor prior to such modification, cancellation, or abrogation, including, but not limited to, bonuses, rentals and royalties.

Applicant: TRIDIMENSION ENERGY, LP

Bidder	Cash Payment	Price/Acre	Rental	Oil	Gas	Other

Legend
08090140
Active_Leases
DOQQ2004



TRACT 40174 - Lasalle Parish, Louisiana

All of the lands now or formerly constituting the beds and bottoms of all water bodies of every nature and description as to which title is vested in the State of Louisiana, together with all islands arising therein and other lands formed by accretion or by reliction, where allowed by law, excepting tax adjudicated lands, and not presently under mineral lease on September 10, 2008, situated in Lasalle Parish, Louisiana, and more particularly described as follows: Beginning at a point having Coordinates of X = 2,132,460.43 and Y = 325,957.57; thence South 58 degrees 16 minutes 46 seconds East 6,068.68 feet to a point having Coordinates of X = 2,137,622.59 and Y = 322,766.80; thence Southwesterly on a straight line approximately 3,989 feet to the Northeast corner of State Lease No. 14617, as amended; thence Westerly and Southerly along the boundary of said State Lease No. 14617 to its Southwest corner; thence Southwesterly approximately 3,888 feet to the Southeast corner of State Lease No. 13461, as amended; thence along the boundary of said State Lease No. 13461 the following courses: Northerly, Westerly, Southerly and Easterly back to its Southeast corner; thence Southerly approximately 2,623 feet to the Northeast corner of State Lease No. 18607 having Coordinates of X = 2,130,850.25 and Y = 313,120.00; thence West 3,960.00 feet along the North boundary of said State Lease No. 18607 to its Northwest corner having Coordinates of X = 2,126,890.25 and Y = 313,120.00; thence Northwesterly on a straight line approximately 88 feet to the Southeast corner of the most Northeastern retained portion of State Lease No. 1461, as amended; thence Northerly, Westerly and Southerly along the boundary of said portion State Lease No. 1461 to its Southwest corner; thence Westerly approximately 11 feet to a point on the East boundary of State Lease No. 502, as amended; thence along the boundary of said State Lease No. 502 the following: Northerly approximately 1,292 feet, Westerly, Southerly and Westerly approximately 1,107 feet to a point; thence North approximately 3 feet to a point on the boundary of a Northern retained portion of said State Lease No. 1461; thence along the boundary of said State Lease No. 1461 the following: Easterly, Northerly, Westerly, Northeasterly, Northerly, Northwesterly, Northerly and Westerly approximately 138 feet to a point a point of intersection with a line having a bearing of South 46 degrees 51 minutes 18 seconds West and commencing at a point having Coordinates of X = 2,132,460.43 and Y = 325,957.57; thence North 46 degrees 51 minutes 18 seconds East approximately 14,978 feet along said line to the point of beginning, **LESS AND EXCEPT** that portion, if any, of State Lease No. 502, as amended, State Lease No. 1461, as amended, State Lease No. 13461, as amended, and State Lease No. 14617, as amended, that may lie within the above described tract, containing approximately **2,131 acres**, all as more particularly outlined on a plat on file in the Office of Mineral Resources, Department of Natural Resources. All bearings, distances and coordinates are based on Louisiana Coordinate System of 1927, (North or South Zone), where applicable.

NOTE: The above description of the Tract nominated for lease has been provided and corrected, where required, exclusively by the nomination

party. Any mineral lease selected from this Tract and awarded by the Louisiana State Mineral Board shall be without warranty of any kind, either express, implied, or statutory, including, but not limited to, the implied warranties of merchantability and fitness for a particular purpose. Should the mineral lease awarded by the Louisiana State Mineral Board be subsequently modified, cancelled or abrogated due to the existence of conflicting leases, operating agreements, private claims or other future obligations or conditions which may affect all or any portion of the leased Tract, it shall not relieve the Lessee of the obligation to pay any bonus due thereon to the Louisiana State Mineral Board, nor shall the Louisiana State Mineral Board be obligated to refund any consideration paid by the Lessor prior to such modification, cancellation, or abrogation, including, but not limited to, bonuses, rentals and royalties.

Applicant: TRIDIMENSION ENERGY, LP

Bidder	Cash Payment	Price/Acre	Rental	Oil	Gas	Other

Legend

- 08090156
- Active_Leases
- DOQQ2004

LA SALLE PARISH

CATAHOULA LAKE

P.O.B.

T7N - R4E

T6N - R4E

SL 18607

SL 502

SL 1461

SL 13461

SL 14617

SL 1461

3,000 Feet



TRACT 40175 - Lasalle Parish, Louisiana

All of the lands now or formerly constituting the beds and bottoms of all water bodies of every nature and description as to which title is vested in the State of Louisiana, together with all islands arising therein and other lands formed by accretion or by reliction, where allowed by law, excepting tax adjudicated lands, and not presently under mineral lease on September 10, 2008, situated in Lasalle Parish, Louisiana, and more particularly described as follows: Beginning at a point having Coordinates of X = 2,137,622.59 and Y = 322,766.80; thence South 61 degrees 18 minutes 54 seconds East 8,692.35 feet to a point having Coordinates of X = 2,145,248.13 and Y = 318,594.51; thence South 10 degrees 28 minutes 27 seconds West 4,921.18 feet to a point having Coordinates of X = 2,144,353.49 and Y = 313,755.33; thence South 62 degrees 34 minutes 11 seconds West 14,108.08 feet to a point having Coordinates of X = 2,131,831.55 and Y = 307,256.20; thence North 16 degrees 55 minutes 47 seconds West 3,369.84 feet to the Easternmost Southeast corner of State Lease No. 18607 having Coordinates of X = 2,130,850.25 and Y = 310,480.00; thence North 2,640.00 feet along the East boundary of said State Lease No. 18607 to its Northeast corner having Coordinates of X = 2,130,850.25 and Y = 313,120.00; thence Northerly approximately 2,623 feet to the Southeast corner of State Lease No. 13461, as amended; thence Northeasterly approximately 3,888 feet to the Southwest corner of State Lease No. 14617, as amended; thence Easterly and Northerly the boundary of said State Lease No. 14617 to its Northeast corner; thence Northeasterly 3,989 feet to the point of beginning, **LESS AND EXCEPT** in their entirety State Lease No. 4775, as amended and State Lease No. 4945, as amended, which lie within the above described tract, containing approximately **2,006 acres**, all as more particularly outlined on a plat on file in the Office of Mineral Resources, Department of Natural Resources. All bearings, distances and coordinates are based on Louisiana Coordinate System of 1927, (North or South Zone), where applicable.

NOTE: The above description of the Tract nominated for lease has been provided and corrected, where required, exclusively by the nomination party. Any mineral lease selected from this Tract and awarded by the Louisiana State Mineral Board shall be without warranty of any kind, either express, implied, or statutory, including, but not limited to, the implied warranties of merchantability and fitness for a particular purpose. Should the mineral lease awarded by the Louisiana State Mineral Board be subsequently modified, cancelled or abrogated due to the existence of conflicting leases, operating agreements, private claims or other future obligations or conditions which may affect all or any portion of the leased Tract, it shall not relieve the Lessee of the obligation to pay any bonus due thereon to the Louisiana State Mineral Board, nor shall the Louisiana State Mineral Board be obligated to refund any consideration paid by the Lessor prior to such modification, cancellation, or abrogation, including, but not limited to, bonuses, rentals and royalties.

Applicant: TRIDIMENSION ENERGY, LP

Bidder	Cash Payment	Price/Acre	Rental	Oil	Gas	Other

Legend

- 08090155
- Active_Leases
- DOQQ2004

