

**TRACT 40156 - Natchitoches Parish, Louisiana**

All of the lands now or formerly constituting the beds and bottoms of all water bodies of every nature and description as to which title is vested in the State of Louisiana, together with all islands arising therein and other lands formed by accretion or by reliction, where allowed by law, excepting tax adjudicated lands, and not presently under mineral lease on September 10, 2008, situated in Natchitoches Parish, Louisiana, and more particularly described as follows: Beginning at a point having Coordinates of X = 1,755,600.00 and Y = 428,600.00; thence East 15,030.00 feet to a point having Coordinates of X = 1,770,630.00 and Y = 428,600.00; thence South 15,755.00 feet to a point having Coordinates of X = 1,770,630.00 and Y = 412,845.00; thence West 15,030.00 feet to a point having Coordinates of X = 1,755,600.00 and Y = 412,845.00; thence North 15,755.00 feet to the point of beginning, containing approximately **27 acres**, all as more particularly outlined on a plat on file in the Office of Mineral Resources, Department of Natural Resources. All bearings, distances and coordinates are based on Louisiana Coordinate System of 1927, (North or South Zone), where applicable.

NOTE: The above description of the Tract nominated for lease has been provided and corrected, where required, exclusively by the nomination party. Any mineral lease selected from this Tract and awarded by the Louisiana State Mineral Board shall be without warranty of any kind, either express, implied, or statutory, including, but not limited to, the implied warranties of merchantability and fitness for a particular purpose. Should the mineral lease awarded by the Louisiana State Mineral Board be subsequently modified, cancelled or abrogated due to the existence of conflicting leases, operating agreements, private claims or other future obligations or conditions which may affect all or any portion of the leased Tract, it shall not relieve the Lessee of the obligation to pay any bonus due thereon to the Louisiana State Mineral Board, nor shall the Louisiana State Mineral Board be obligated to refund any consideration paid by the Lessor prior to such modification, cancellation, or abrogation, including, but not limited to, bonuses, rentals and royalties.

Applicant: THEOPHILUS OIL GAS & LAND SERVICES, LLC

Bidder	Cash Payment	Price/Acre	Rental	Oil	Gas	Other

NATCHITOCHE PARISH

T10N - R9W

BAYOU TAPALCAT

P.O.B.

T9N - R9W



**TRACT 40157 - Natchitoches Parish, Louisiana**

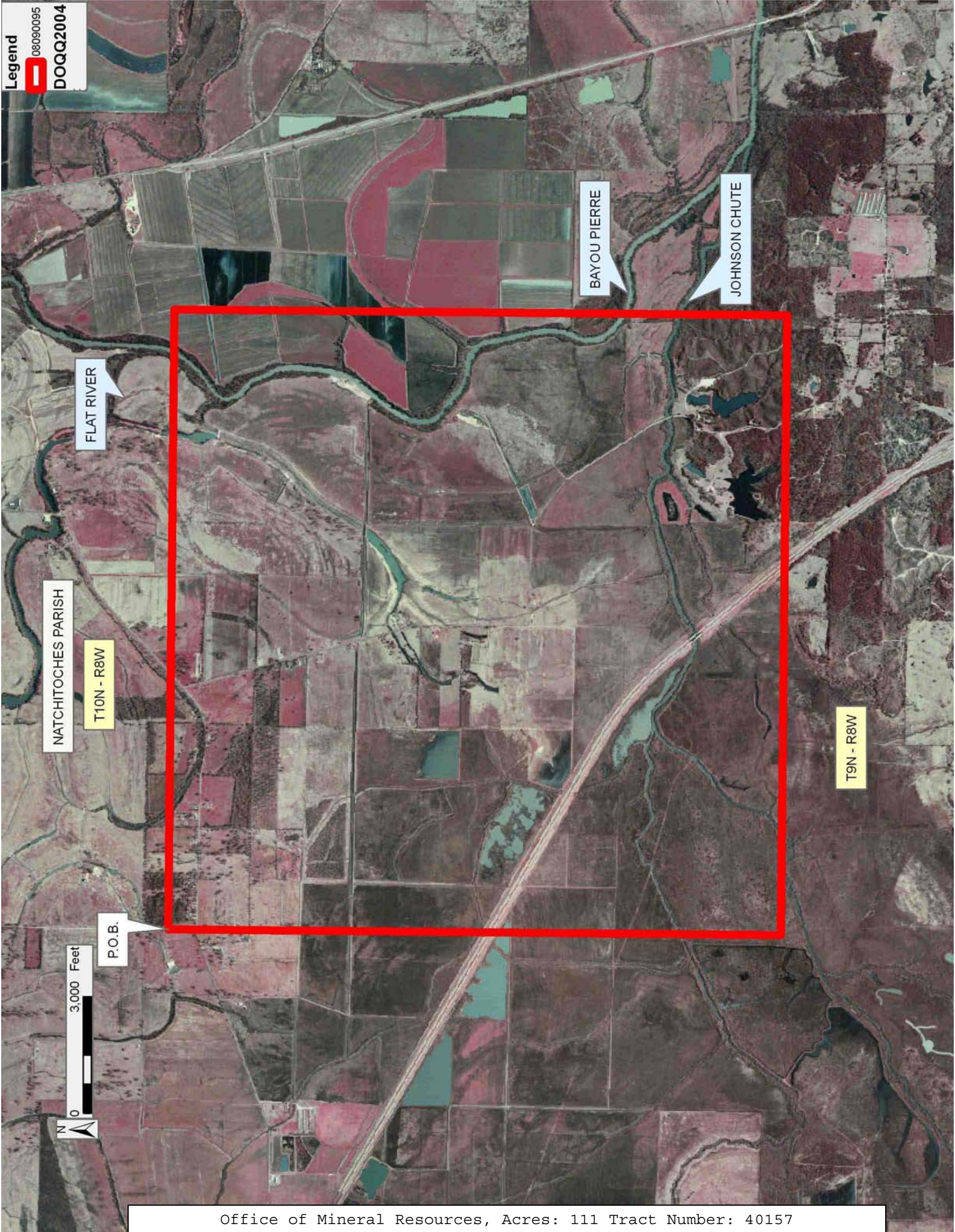
All of the lands now or formerly constituting the beds and bottoms of all water bodies of every nature and description as to which title is vested in the State of Louisiana, together with all islands arising therein and other lands formed by accretion or by reliction, where allowed by law, excepting tax adjudicated lands, and not presently under mineral lease on September 10, 2008, situated in Natchitoches Parish, Louisiana, and more particularly described as follows: Beginning at a point having Coordinates of X = 1,770,630.00 and Y = 428,600.00; thence East 15,940.00 feet to a point having Coordinates of X = 1,786,570.00 and Y = 428,600.00; thence South 15,755.00 feet to a point having Coordinates of X = 1,786,570.00 and Y = 412,845.00; thence West 15,940.00 feet to a point having Coordinates of X = 1,770,630.00 and Y = 412,845.00; thence North 15,755.00 feet to the point of beginning, containing approximately **111 acres**, all as more particularly outlined on a plat on file in the Office of Mineral Resources, Department of Natural Resources. All bearings, distances and coordinates are based on Louisiana Coordinate System of 1927, (North or South Zone), where applicable.

NOTE: The above description of the Tract nominated for lease has been provided and corrected, where required, exclusively by the nomination party. Any mineral lease selected from this Tract and awarded by the Louisiana State Mineral Board shall be without warranty of any kind, either express, implied, or statutory, including, but not limited to, the implied warranties of merchantability and fitness for a particular purpose. Should the mineral lease awarded by the Louisiana State Mineral Board be subsequently modified, cancelled or abrogated due to the existence of conflicting leases, operating agreements, private claims or other future obligations or conditions which may affect all or any portion of the leased Tract, it shall not relieve the Lessee of the obligation to pay any bonus due thereon to the Louisiana State Mineral Board, nor shall the Louisiana State Mineral Board be obligated to refund any consideration paid by the Lessor prior to such modification, cancellation, or abrogation, including, but not limited to, bonuses, rentals and royalties.

Applicant: THEOPHILUS OIL GAS & LAND SERVICES, LLC

Bidder	Cash Payment	Price/Acre	Rental	Oil	Gas	Other

Legend  
08090095  
DOQQ2004



NATCHITOCHE PARISH

T10N - R8W

T9N - R8W

FLAT RIVER

BAYOU PIERRE

JOHNSON CHUTE

P.O.B.

3,000 Feet

**TRACT 40158 - Sabine Parish, Louisiana**

All of the lands now or formerly constituting the beds and bottoms of all water bodies of every nature and description as to which title is vested in the State of Louisiana, together with all islands arising therein and other lands formed by accretion or by reliction, where allowed by law, excepting tax adjudicated lands, and not presently under mineral lease on September 10, 2008, situated in Sabine Parish, Louisiana, and more particularly described as follows: Beginning at a point having Coordinates of X = 1,580,905.00 and Y = 415,205.00; thence East 15,902.50 feet to a point having Coordinates of X = 1,596,807.50 and Y = 415,205.00; thence South 15,825.00 feet to a point having Coordinates of X = 1,596,807.50 and Y = 399,380.00; thence West 14,747.50 feet to a point having Coordinates of X = 1,582,060.00 and Y = 399,380.00; thence North 10,178.38 feet to a point on the Western boundary of State Lease No. 17329, as amended, having Coordinates of X = 1,582,060.00 and Y = 409,558.38; thence along the boundary of said State Lease No. 17329 the following courses: South 26 degrees 00 minutes 00 seconds East 9,515.00 feet to a corner having Coordinates of X = 1,586,231.10 and Y = 401,006.35; North 53 degrees 32 minutes 52 seconds East 5,084.37 feet to a corner having Coordinates of X = 1,590,320.73 and Y = 404,027.24; North 26 degrees 00 minutes 00 seconds West 10,738.10 feet to a corner having Coordinates of X = 1,585,613.46 and Y = 413,678.58 and South 53 degrees 32 minutes 52 seconds West 5,084.37 feet to its Northwest corner having Coordinates of X = 1,581,523.83 and Y = 410,657.69; thence North 09 degrees 53 minutes 45 seconds West 3,600.88 feet to a point having Coordinates of X = 1,580,905.00 and Y = 414,205.00; thence North 1,000.00 feet to the point of beginning, containing approximately **117 acres, LESS AND EXCEPT** that portion thereof, if any, located West of the boundary line between the States of Texas and Louisiana as determined by the report of the Special Master and adjudicated by the Supreme Court of the United States in litigation styled **Texas v. Louisiana, et al No. 36 Original**, or as otherwise approved by said court, all as more particularly outlined on a plat on file in the Office of Mineral Resources, Department of Natural Resources. All bearings, distances and coordinates are based on Louisiana Coordinate System of 1927, (North or South Zone), where applicable.

NOTE: The above description of the Tract nominated for lease has been provided and corrected, where required, exclusively by the nomination party. Any mineral lease selected from this Tract and awarded by the Louisiana State Mineral Board shall be without warranty of any kind, either express, implied, or statutory, including, but not limited to, the implied warranties of merchantability and fitness for a particular purpose. Should the mineral lease awarded by the Louisiana State Mineral Board be subsequently modified, cancelled or abrogated due to the existence of conflicting leases, operating agreements, private claims or other future obligations or conditions which may affect all or any portion of the leased Tract, it shall not relieve the Lessee of the obligation to pay any bonus due thereon to the Louisiana State Mineral Board, nor shall the Louisiana State Mineral Board be obligated to refund any consideration

paid by the Lessor prior to such modification, cancellation, or abrogation, including, but not limited to, bonuses, rentals and royalties.

Applicant: THEOPHILUS OIL GAS & LAND SERVICES, LLC

Bidder	Cash Payment	Price/Acre	Rental	Oil	Gas	Other

**Legend**  
08090091  
Active\_Leases  
DOQQ2004



**TRACT 40159 - Sabine Parish, Louisiana**

All of the lands now or formerly constituting the beds and bottoms of all water bodies of every nature and description as to which title is vested in the State of Louisiana, together with all islands arising therein and other lands formed by accretion or by reliction, where allowed by law, excepting tax adjudicated lands, and not presently under mineral lease on September 10, 2008, situated in Sabine Parish, Louisiana, and more particularly described as follows: Beginning at a point having Coordinates of X = 1,582,060.00 and Y = 399,380.00; thence East 16,840.00 feet to a point having Coordinates of X = 1,598,900.00 and Y = 399,380.00; thence South 15,825.00 feet to a point having Coordinates of X = 1,598,900.00 and Y = 383,555.00; thence West 16,840.00 feet to a point having Coordinates of X = 1,582,060.00 and Y = 383,555.00; thence North 15,825.00 feet to the point of beginning, containing approximately **92 acres, LESS AND EXCEPT** that portion thereof, if any, located West of the boundary line between the States of Texas and Louisiana as determined by the report of the Special Master and adjudicated by the Supreme Court of the United States in litigation styled **Texas v. Louisiana, et al No. 36 Original**, or as otherwise approved by said court, all as more particularly outlined on a plat on file in the Office of Mineral Resources, Department of Natural Resources. All bearings, distances and coordinates are based on Louisiana Coordinate System of 1927, (North or South Zone), where applicable.

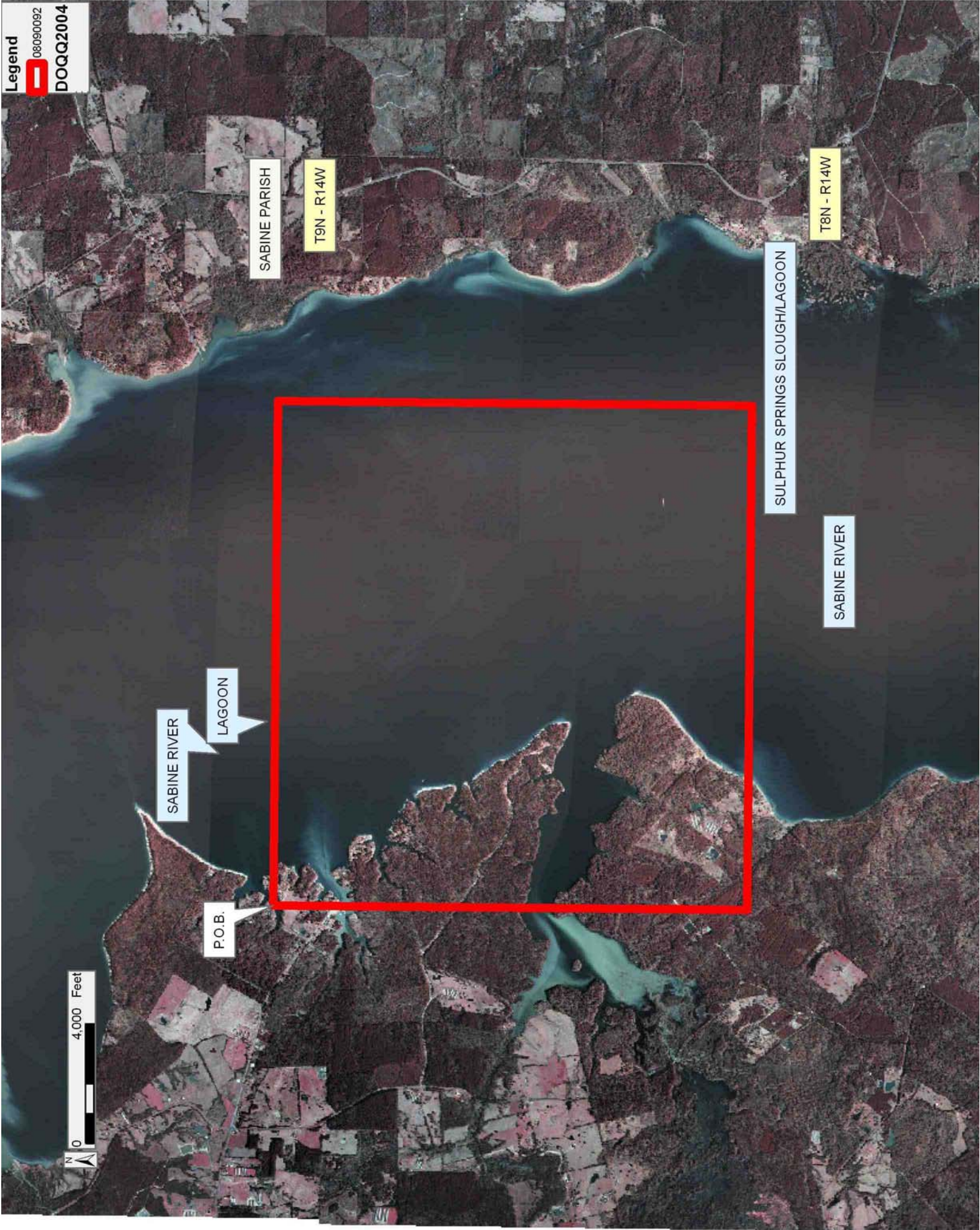
NOTE: The above description of the Tract nominated for lease has been provided and corrected, where required, exclusively by the nomination party. Any mineral lease selected from this Tract and awarded by the Louisiana State Mineral Board shall be without warranty of any kind, either express, implied, or statutory, including, but not limited to, the implied warranties of merchantability and fitness for a particular purpose. Should the mineral lease awarded by the Louisiana State Mineral Board be subsequently modified, cancelled or abrogated due to the existence of conflicting leases, operating agreements, private claims or other future obligations or conditions which may affect all or any portion of the leased Tract, it shall not relieve the Lessee of the obligation to pay any bonus due thereon to the Louisiana State Mineral Board, nor shall the Louisiana State Mineral Board be obligated to refund any consideration paid by the Lessor prior to such modification, cancellation, or abrogation, including, but not limited to, bonuses, rentals and royalties.



Applicant: THEOPHILUS OIL GAS & LAND SERVICES, LLC

Bidder	Cash Payment	Price/Acre	Rental	Oil	Gas	Other

Legend  
08090092  
DOQQ2004



**TRACT 40160 - Sabine Parish, Louisiana**

All of the lands now or formerly constituting the beds and bottoms of all water bodies of every nature and description as to which title is vested in the State of Louisiana, together with all islands arising therein and other lands formed by accretion or by reliction, where allowed by law, excepting tax adjudicated lands, and not presently under mineral lease on September 10, 2008, situated in Sabine Parish, Louisiana, and more particularly described as follows: Beginning at a point having Coordinates of X = 1,639,100.00 and Y = 384,315.00; thence East 15,840.00 feet to a point having Coordinates of X = 1,654,940.00 and Y = 384,315.00; thence South 16,825.00 feet to a point having Coordinates of X = 1,654,940.00 and Y = 367,490.00; thence West 15,840.00 feet to a point having Coordinates of X = 1,639,100.00 and Y = 367,490.00; thence North 16,825.00 feet to the point of beginning, containing approximately **35 acres**, all as more particularly outlined on a plat on file in the Office of Mineral Resources, Department of Natural Resources. All bearings, distances and coordinates are based on Louisiana Coordinate System of 1927, (North or South Zone), where applicable.

NOTE: The above description of the Tract nominated for lease has been provided and corrected, where required, exclusively by the nomination party. Any mineral lease selected from this Tract and awarded by the Louisiana State Mineral Board shall be without warranty of any kind, either express, implied, or statutory, including, but not limited to, the implied warranties of merchantability and fitness for a particular purpose. Should the mineral lease awarded by the Louisiana State Mineral Board be subsequently modified, cancelled or abrogated due to the existence of conflicting leases, operating agreements, private claims or other future obligations or conditions which may affect all or any portion of the leased Tract, it shall not relieve the Lessee of the obligation to pay any bonus due thereon to the Louisiana State Mineral Board, nor shall the Louisiana State Mineral Board be obligated to refund any consideration paid by the Lessor prior to such modification, cancellation, or abrogation, including, but not limited to, bonuses, rentals and royalties.

Applicant: THEOPHILUS OIL GAS & LAND SERVICES, LLC

Bidder	Cash Payment	Price/Acre	Rental	Oil	Gas	Other

**Legend**  
08090054  
Slowwaterbottoms  
DOQQ2004

SABINE PARISH

T9N - R12W

P.O.B.

BAYOU SAN MIGUEL

T8N - R13W



**TRACT 40161 - Sabine Parish, Louisiana**

All of the lands now or formerly constituting the beds and bottoms of all water bodies of every nature and description as to which title is vested in the State of Louisiana, together with all islands arising therein and other lands formed by accretion or by reliction, where allowed by law, excepting tax adjudicated lands, and not presently under mineral lease on September 10, 2008, situated in Sabine Parish, Louisiana, and more particularly described as follows: Beginning at a point having Coordinates of X = 1,584,400.00 and Y = 383,555.00; thence East 14,500.00 feet to a point having Coordinates of X = 1,598,900.00 and Y = 383,555.00; thence South 15,305.00 feet to the Northeast corner of State Lease No. 19157 having Coordinates of X = 1,598,900.00 and Y = 368,250.00; thence West 14,500.00 feet along the North boundary of said State Lease No. 19157 to its Northwest corner having Coordinates of X = 1,584,400.00 and Y = 368,250.00; thence North 15,305.00 feet to the point of beginning, containing approximately **145 acres, LESS AND EXCEPT** that portion thereof, if any, located West of the boundary line between the States of Texas and Louisiana as determined by the report of the Special Master and adjudicated by the Supreme Court of the United States in litigation styled **Texas v. Louisiana, et al No. 36 Original**, or as otherwise approved by said court, all as more particularly outlined on a plat on file in the Office of Mineral Resources, Department of Natural Resources. All bearings, distances and coordinates are based on Louisiana Coordinate System of 1927, (North or South Zone), where applicable.

NOTE: The above description of the Tract nominated for lease has been provided and corrected, where required, exclusively by the nomination party. Any mineral lease selected from this Tract and awarded by the Louisiana State Mineral Board shall be without warranty of any kind, either express, implied, or statutory, including, but not limited to, the implied warranties of merchantability and fitness for a particular purpose. Should the mineral lease awarded by the Louisiana State Mineral Board be subsequently modified, cancelled or abrogated due to the existence of conflicting leases, operating agreements, private claims or other future obligations or conditions which may affect all or any portion of the leased Tract, it shall not relieve the Lessee of the obligation to pay any bonus due thereon to the Louisiana State Mineral Board, nor shall the Louisiana State Mineral Board be obligated to refund any consideration paid by the Lessor prior to such modification, cancellation, or abrogation, including, but not limited to, bonuses, rentals and royalties.

Applicant: THEOPHILUS OIL GAS & LAND SERVICES, LLC

Bidder	Cash Payment	Price/Acre	Rental	Oil	Gas	Other

**Legend**  
08090057  
Active\_Leases  
DOQQ2004

T9N - R14W

T8N - R14W

SABINE PARISH

SULPHUR SPRINGS SLOUGH/LAGOON

SABINE RIVER

SL 19157

P.O.B.



**TRACT 40162 - Sabine Parish, Louisiana**

All of the lands now or formerly constituting the beds and bottoms of all water bodies of every nature and description as to which title is vested in the State of Louisiana, together with all islands arising therein and other lands formed by accretion or by reliction, where allowed by law, excepting tax adjudicated lands, and not presently under mineral lease on September 10, 2008, situated in Sabine Parish, Louisiana, and more particularly described as follows: Beginning at a point having Coordinates of X = 1,612,050.00 and Y = 383,315.00; thence East 16,165.00 feet to a point having Coordinates of X = 1,628,215.00 and Y = 383,315.00; thence South 15,825.00 feet to a point having Coordinates of X = 1,628,215.00 and Y = 367,490.00; thence West 16,165.00 feet to a point having Coordinates of X = 1,612,050.00 and Y = 367,490.00; thence North 15,825.00 feet to the point of beginning, containing approximately **22 acres**, all as more particularly outlined on a plat on file in the Office of Mineral Resources, Department of Natural Resources. All bearings, distances and coordinates are based on Louisiana Coordinate System of 1927, (North or South Zone), where applicable.

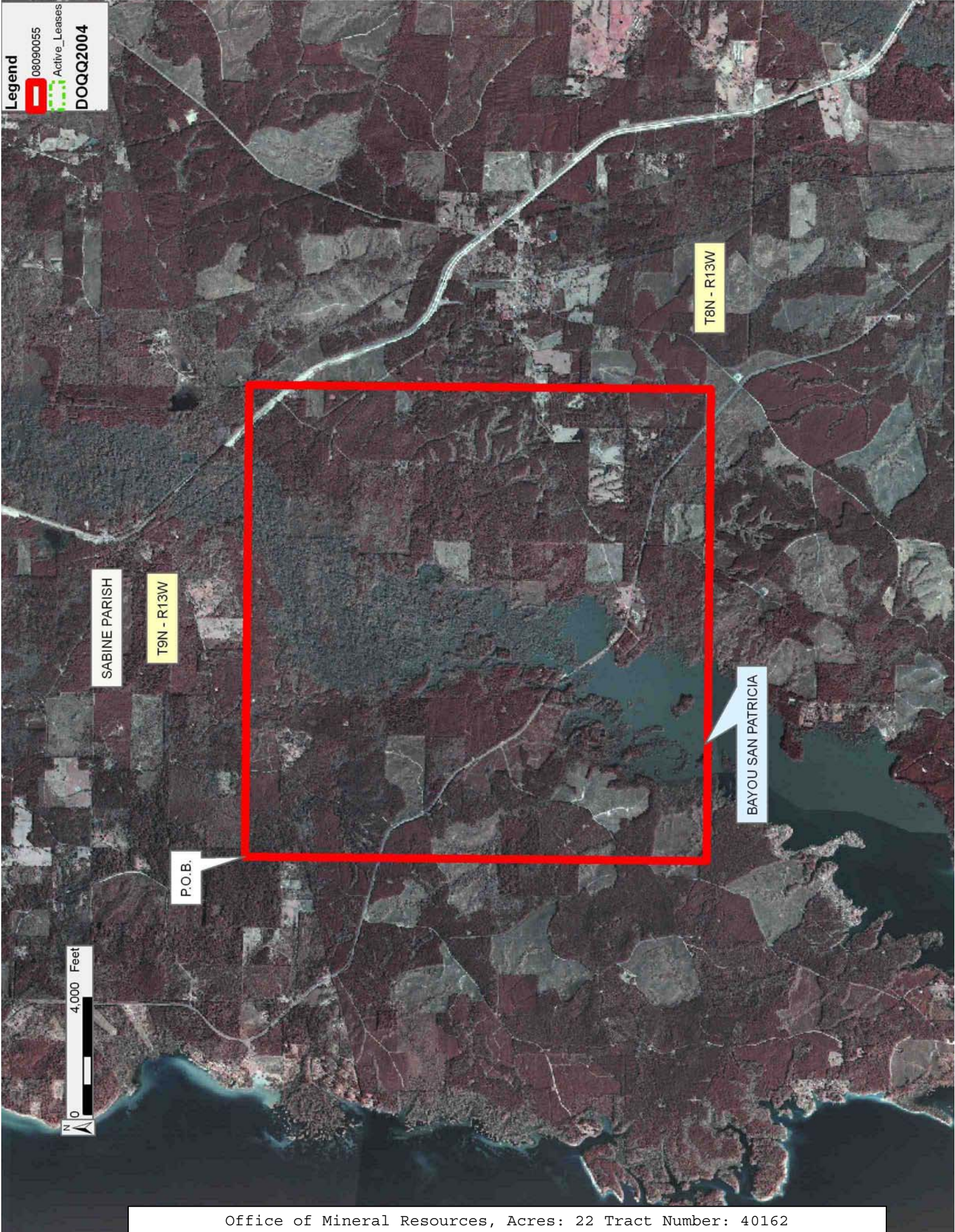
NOTE: The above description of the Tract nominated for lease has been provided and corrected, where required, exclusively by the nomination party. Any mineral lease selected from this Tract and awarded by the Louisiana State Mineral Board shall be without warranty of any kind, either express, implied, or statutory, including, but not limited to, the implied warranties of merchantability and fitness for a particular purpose. Should the mineral lease awarded by the Louisiana State Mineral Board be subsequently modified, cancelled or abrogated due to the existence of conflicting leases, operating agreements, private claims or other future obligations or conditions which may affect all or any portion of the leased Tract, it shall not relieve the Lessee of the obligation to pay any bonus due thereon to the Louisiana State Mineral Board, nor shall the Louisiana State Mineral Board be obligated to refund any consideration paid by the Lessor prior to such modification, cancellation, or abrogation, including, but not limited to, bonuses, rentals and royalties.

Applicant: THEOPHILUS OIL GAS & LAND SERVICES, LLC

Bidder	Cash Payment	Price/Acre	Rental	Oil	Gas	Other



**Legend**  
08090055  
Active\_Leases  
DOQQ2004



SABINE PARISH

T9N - R13W

T8N - R13W

BAYOU SAN PATRICIA

P.O.B.

N 0  
4,000 Feet

**TRACT 40163 - Sabine Parish, Louisiana**

All of the lands now or formerly constituting the beds and bottoms of all water bodies of every nature and description as to which title is vested in the State of Louisiana, together with all islands arising therein and other lands formed by accretion or by reliction, where allowed by law, excepting tax adjudicated lands, and not presently under mineral lease on September 10, 2008, situated in Sabine Parish, Louisiana, and more particularly described as follows: Beginning at a point on the East boundary of State Lease No. 19157 having Coordinates of X = 1,598,900.00 and Y = 367,490.00; thence East 18,430.00 feet to a point having Coordinates of X = 1,617,330.00 and Y = 367,490.00; thence South 15,825.00 feet to a point having Coordinates of X = 1,617,330.00 and Y = 351,665.00; thence West 18,430.00 feet to a point on the East boundary of State Lease No. 19158 having Coordinates of X = 1,598,900.00 and Y = 351,665.00; thence North 5,085.00 feet along the East boundary of said State Lease No. 19158 to its Northeast corner, also being the Southeast corner of said State Lease No. 19157 having Coordinates of X = 1,598,900.00 and Y = 356,750.00; thence North 10,740.00 feet along the East boundary of said State Lease No. 19157 to the point of beginning, containing approximately **75 acres**, all as more particularly outlined on a plat on file in the Office of Mineral Resources, Department of Natural Resources. All bearings, distances and coordinates are based on Louisiana Coordinate System of 1927, (North or South Zone), where applicable.

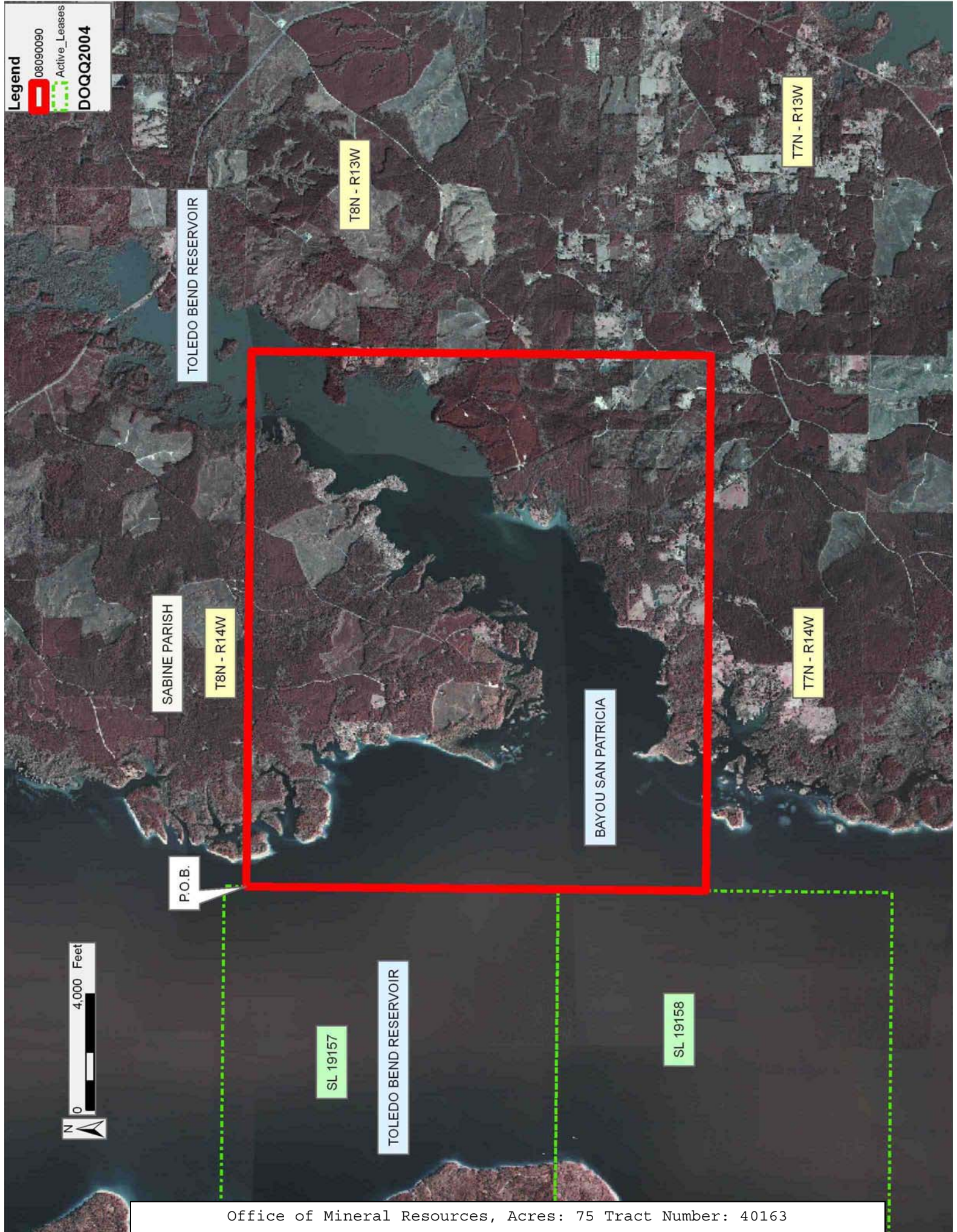
NOTE: The above description of the Tract nominated for lease has been provided and corrected, where required, exclusively by the nomination party. Any mineral lease selected from this Tract and awarded by the Louisiana State Mineral Board shall be without warranty of any kind, either express, implied, or statutory, including, but not limited to, the implied warranties of merchantability and fitness for a particular purpose. Should the mineral lease awarded by the Louisiana State Mineral Board be subsequently modified, cancelled or abrogated due to the existence of conflicting leases, operating agreements, private claims or other future obligations or conditions which may affect all or any portion of the leased Tract, it shall not relieve the Lessee of the obligation to pay any bonus due thereon to the Louisiana State Mineral Board, nor shall the Louisiana State Mineral Board be obligated to refund any consideration paid by the Lessor prior to such modification, cancellation, or abrogation, including, but not limited to, bonuses, rentals and royalties.

Applicant: THEOPHILUS OIL GAS & LAND SERVICES, LLC

Bidder	Cash Payment	Price/Acre	Rental	Oil	Gas	Other

**Legend**

- 08090090
- Active\_Leases
- DOQQ2004



TOLEDO BEND RESERVOIR

SABINE PARISH

T8N - R14W

P.O.B.

T8N - R13W

T7N - R13W

BAYOU SAN PATRICIA

T7N - R14W

SL 19157

TOLEDO BEND RESERVOIR

SL 19158

**TRACT 40164 - Sabine Parish, Louisiana**

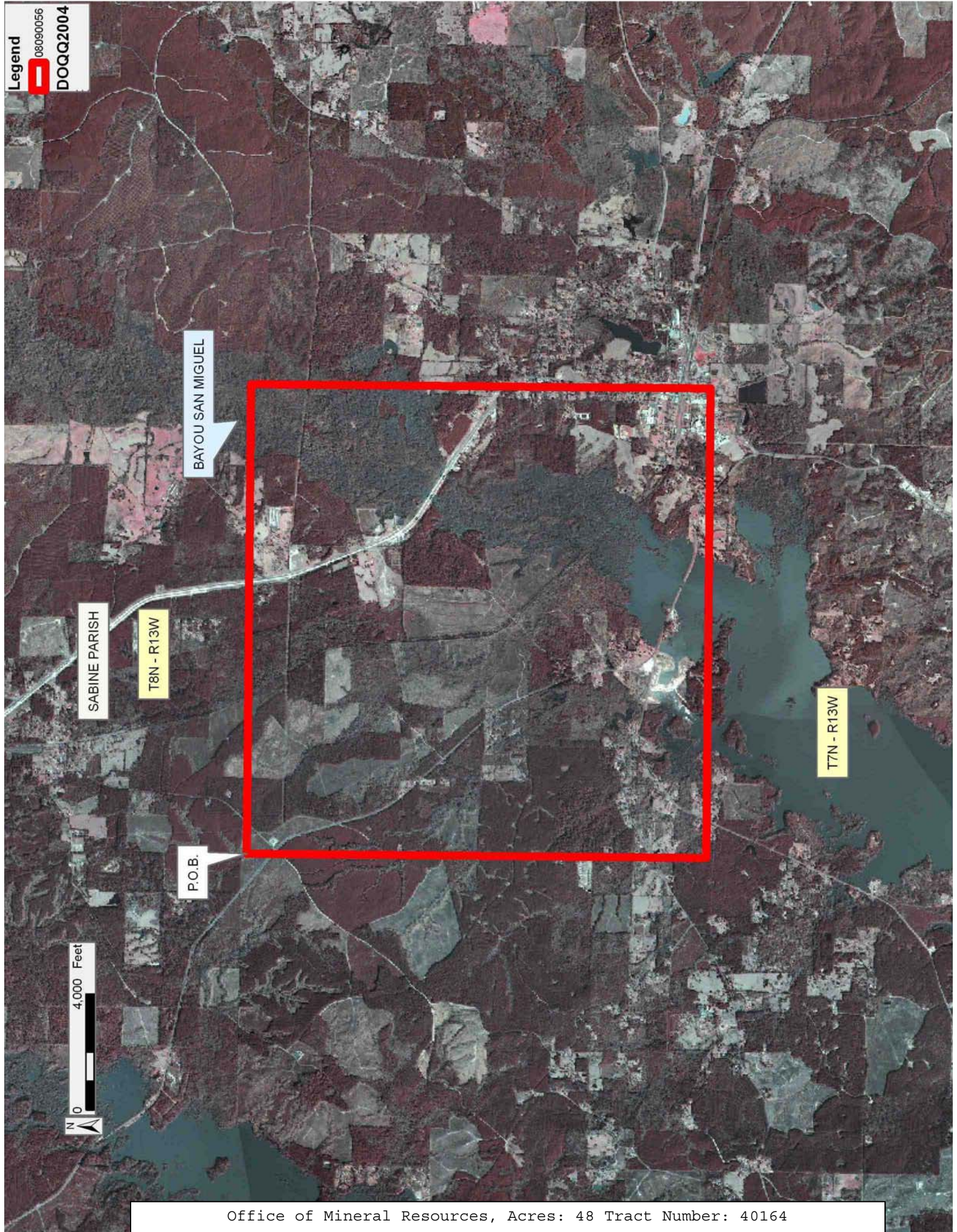
All of the lands now or formerly constituting the beds and bottoms of all water bodies of every nature and description as to which title is vested in the State of Louisiana, together with all islands arising therein and other lands formed by accretion or by reliction, where allowed by law, excepting tax adjudicated lands, and not presently under mineral lease on September 10, 2008, situated in Sabine Parish, Louisiana, and more particularly described as follows: Beginning at a point having Coordinates of X = 1,628,215.00 and Y = 367,490.00; thence East 16,165.00 feet to a point having Coordinates of X = 1,644,380.00 and Y = 367,490.00; thence South 15,825.00 feet to a point having Coordinates of X = 1,644,380.00 and Y = 351,665.00; thence West 16,165.00 feet to a point having Coordinates of X = 1,628,215.00 and Y = 351,665.00; thence North 15,825.00 feet to the point of beginning, containing approximately **48 acres**, all as more particularly outlined on a plat on file in the Office of Mineral Resources, Department of Natural Resources. All bearings, distances and coordinates are based on Louisiana Coordinate System of 1927, (North or South Zone), where applicable.

NOTE: The above description of the Tract nominated for lease has been provided and corrected, where required, exclusively by the nomination party. Any mineral lease selected from this Tract and awarded by the Louisiana State Mineral Board shall be without warranty of any kind, either express, implied, or statutory, including, but not limited to, the implied warranties of merchantability and fitness for a particular purpose. Should the mineral lease awarded by the Louisiana State Mineral Board be subsequently modified, cancelled or abrogated due to the existence of conflicting leases, operating agreements, private claims or other future obligations or conditions which may affect all or any portion of the leased Tract, it shall not relieve the Lessee of the obligation to pay any bonus due thereon to the Louisiana State Mineral Board, nor shall the Louisiana State Mineral Board be obligated to refund any consideration paid by the Lessor prior to such modification, cancellation, or abrogation, including, but not limited to, bonuses, rentals and royalties.

Applicant: THEOPHILUS OIL GAS & LAND SERVICES, LLC

Bidder	Cash Payment	Price/Acre	Rental	Oil	Gas	Other

Legend  
08090056  
DOQQ2004



**TRACT 40165 - Sabine Parish, Louisiana**

All of the lands now or formerly constituting the beds and bottoms of all water bodies of every nature and description as to which title is vested in the State of Louisiana, together with all islands arising therein and other lands formed by accretion or by reliction, where allowed by law, excepting tax adjudicated lands, and not presently under mineral lease on September 10, 2008, situated in Sabine Parish, Louisiana, and more particularly described as follows: Beginning at a point having Coordinates of X = 1,628,215.00 and Y = 351,665.00; thence East 17,165.00 feet to a point having Coordinates of X = 1,645,380.00 and Y = 351,665.00; thence South 15,967.50 feet to a point having Coordinates of X = 1,645,380.00 and Y = 335,697.50; thence West 17,165.00 feet to a point having Coordinates of X = 1,628,215.00 and Y = 335,697.50; thence North 15,967.50 feet to the point of beginning, (This lease includes only waterbottoms claimed and owned by the state and specifically excludes any land which the state may claim or own and to which the mineral rights are vested in the state), containing approximately **50 acres**, all as more particularly outlined on a plat on file in the Office of Mineral Resources, Department of Natural Resources. All bearings, distances and coordinates are based on Louisiana Coordinate System of 1927, (North or South Zone), where applicable.

NOTE: The above description of the Tract nominated for lease has been provided and corrected, where required, exclusively by the nomination party. Any mineral lease selected from this Tract and awarded by the Louisiana State Mineral Board shall be without warranty of any kind, either express, implied, or statutory, including, but not limited to, the implied warranties of merchantability and fitness for a particular purpose. Should the mineral lease awarded by the Louisiana State Mineral Board be subsequently modified, cancelled or abrogated due to the existence of conflicting leases, operating agreements, private claims or other future obligations or conditions which may affect all or any portion of the leased Tract, it shall not relieve the Lessee of the obligation to pay any bonus due thereon to the Louisiana State Mineral Board, nor shall the Louisiana State Mineral Board be obligated to refund any consideration paid by the Lessor prior to such modification, cancellation, or abrogation, including, but not limited to, bonuses, rentals and royalties.

Bidder	Cash Payment	Price/Acre	Rental	Oil	Gas	Other

Applicant: THEOPHILUS OIL GAS & LAND SERVICES, LLC



Legend  
08090050  
DOQQ2004

