

TRACT 40146 - Natchitoches and Red River Parishes, Louisiana

All of the lands now or formerly constituting the beds and bottoms of all water bodies of every nature and description as to which title is vested in the State of Louisiana, together with all islands arising therein and other lands formed by accretion or by reliction, where allowed by law, excepting tax adjudicated lands, and not presently under mineral lease on September 10, 2008, situated in Natchitoches and Red River Parishes, Louisiana, and more particularly described as follows: Beginning at a point having Coordinates of X = 1,770,630.00 and Y = 460,110.00; thence East 15,940.00 feet to a point having Coordinates of X = 1,786,570.00 and Y = 460,110.00; thence South 15,755.00 feet to a point having Coordinates of X = 1,786,570.00 and Y = 444,355.00; thence West 15,940.00 feet to a point having Coordinates of X = 1,770,630.00 and Y = 444,355.00; thence North 15,755.00 feet to the point of beginning, containing approximately **300 acres**, all as more particularly outlined on a plat on file in the Office of Mineral Resources, Department of Natural Resources. All bearings, distances and coordinates are based on Louisiana Coordinate System of 1927, (North or South Zone), where applicable.

NOTE: The above description of the Tract nominated for lease has been provided and corrected, where required, exclusively by the nomination party. Any mineral lease selected from this Tract and awarded by the Louisiana State Mineral Board shall be without warranty of any kind, either express, implied, or statutory, including, but not limited to, the implied warranties of merchantability and fitness for a particular purpose. Should the mineral lease awarded by the Louisiana State Mineral Board be subsequently modified, cancelled or abrogated due to the existence of conflicting leases, operating agreements, private claims or other future obligations or conditions which may affect all or any portion of the leased Tract, it shall not relieve the Lessee of the obligation to pay any bonus due thereon to the Louisiana State Mineral Board, nor shall the Louisiana State Mineral Board be obligated to refund any consideration paid by the Lessor prior to such modification, cancellation, or abrogation, including, but not limited to, bonuses, rentals and royalties.

Applicant: THEOPHILUS OIL GAS & LAND SERVICES, LLC

Bidder	Cash Payment	Price/Acre	Rental	Oil	Gas	Other

NATCHITOCHE PARISH

T11N - R8W

T10N - R8W

RED RIVER POWHATTEN CUTOFF

P.O.B.

RED RIVER



TRACT 40147 - Natchitoches and Red River Parishes, Louisiana

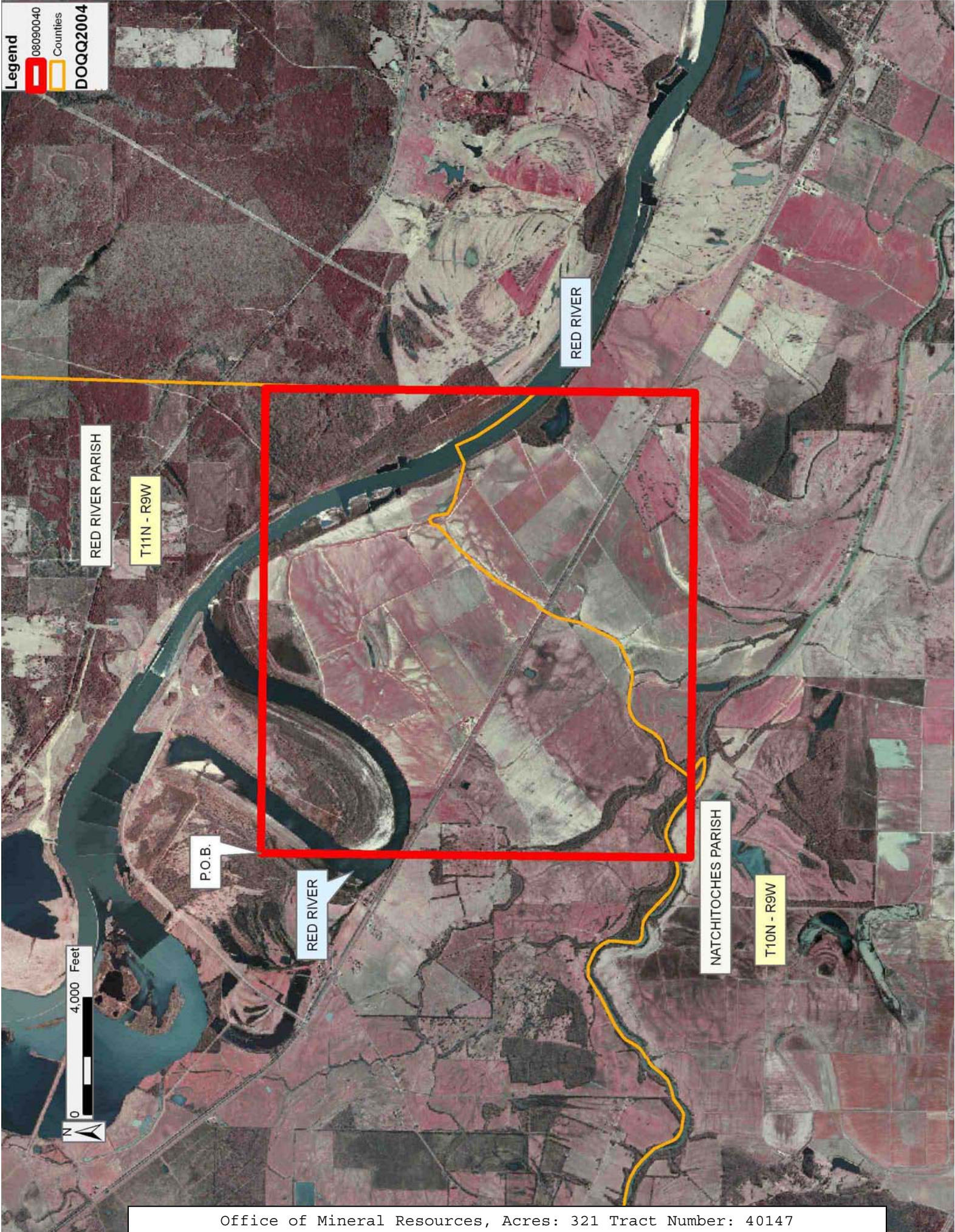
All of the lands now or formerly constituting the beds and bottoms of all water bodies of every nature and description as to which title is vested in the State of Louisiana, together with all islands arising therein and other lands formed by accretion or by reliction, where allowed by law, excepting tax adjudicated lands, and not presently under mineral lease on September 10, 2008, situated in Natchitoches and Red River Parishes, Louisiana, and more particularly described as follows: Beginning at a point having Coordinates of X = 1,754,705.00 and Y = 459,870.00; thence East 15,925.00 feet to a point having Coordinates of X = 1,770,630.00 and Y = 459,870.00; thence South 14,710.00 feet to a point having Coordinates of X = 1,770,630.00 and Y = 445,160.00; thence West 15,925.00 feet to a point having Coordinates of X = 1,754,705.00 and Y = 445,160.00; thence North 14,710.00 feet to the point of beginning, containing approximately **321 acres**, all as more particularly outlined on a plat on file in the Office of Mineral Resources, Department of Natural Resources. All bearings, distances and coordinates are based on Louisiana Coordinate System of 1927, (North or South Zone), where applicable.

NOTE: The above description of the Tract nominated for lease has been provided and corrected, where required, exclusively by the nomination party. Any mineral lease selected from this Tract and awarded by the Louisiana State Mineral Board shall be without warranty of any kind, either express, implied, or statutory, including, but not limited to, the implied warranties of merchantability and fitness for a particular purpose. Should the mineral lease awarded by the Louisiana State Mineral Board be subsequently modified, cancelled or abrogated due to the existence of conflicting leases, operating agreements, private claims or other future obligations or conditions which may affect all or any portion of the leased Tract, it shall not relieve the Lessee of the obligation to pay any bonus due thereon to the Louisiana State Mineral Board, nor shall the Louisiana State Mineral Board be obligated to refund any consideration paid by the Lessor prior to such modification, cancellation, or abrogation, including, but not limited to, bonuses, rentals and royalties.

Applicant: THEOPHILUS OIL GAS & LAND SERVICES, LLC

Bidder	Cash Payment	Price/Acre	Rental	Oil	Gas	Other

Legend
08090040
Counties
DOQQ2004



TRACT 40148 - De Soto Parish, Louisiana

All of the lands now or formerly constituting the beds and bottoms of all water bodies of every nature and description as to which title is vested in the State of Louisiana, together with all islands arising therein and other lands formed by accretion or by reliction, where allowed by law, excepting tax adjudicated lands, and not presently under mineral lease on September 10, 2008, situated in De Soto Parish, Louisiana, and more particularly described as follows: Beginning at a point having Coordinates of X = 1,564,065.00 and Y = 446,980.00; thence East 16,840.00 feet to a point having Coordinates of X = 1,580,905.00 and Y = 446,980.00; thence South 15,887.50 feet to a point having Coordinates of X = 1,580,905.00 and Y = 431,092.50; thence West 16,840.00 feet to a point having Coordinates of X = 1,564,065.00 and Y = 431,092.50; thence North 15,887.50 feet to the point of beginning, containing approximately **89 acres, LESS AND EXCEPT** that portion thereof, if any, located West of the boundary line between the States of Texas and Louisiana as determined by the report of the Special Master and adjudicated by the Supreme Court of the United States in litigation styled **Texas v. Louisiana, et al No. 36 Original**, or as otherwise approved by said court, all as more particularly outlined on a plat on file in the Office of Mineral Resources, Department of Natural Resources. All bearings, distances and coordinates are based on Louisiana Coordinate System of 1927, (North or South Zone), where applicable.

NOTE: The above description of the Tract nominated for lease has been provided and corrected, where required, exclusively by the nomination party. Any mineral lease selected from this Tract and awarded by the Louisiana State Mineral Board shall be without warranty of any kind, either express, implied, or statutory, including, but not limited to, the implied warranties of merchantability and fitness for a particular purpose. Should the mineral lease awarded by the Louisiana State Mineral Board be subsequently modified, cancelled or abrogated due to the existence of conflicting leases, operating agreements, private claims or other future obligations or conditions which may affect all or any portion of the leased Tract, it shall not relieve the Lessee of the obligation to pay any bonus due thereon to the Louisiana State Mineral Board, nor shall the Louisiana State Mineral Board be obligated to refund any consideration paid by the Lessor prior to such modification, cancellation, or abrogation, including, but not limited to, bonuses, rentals and royalties.

Applicant: THEOPHILUS OIL, GAS & LAND SERVICES, LLC

Bidder	Cash Payment	Price/Acre	Rental	Oil	Gas	Other

T11N - R14W

T10N - R14W

DE SOTO PARISH

SABINE RIVER

P.O.B.

0 4,000 Feet



TRACT 40149 - Natchitoches and Red River Parishes, Louisiana

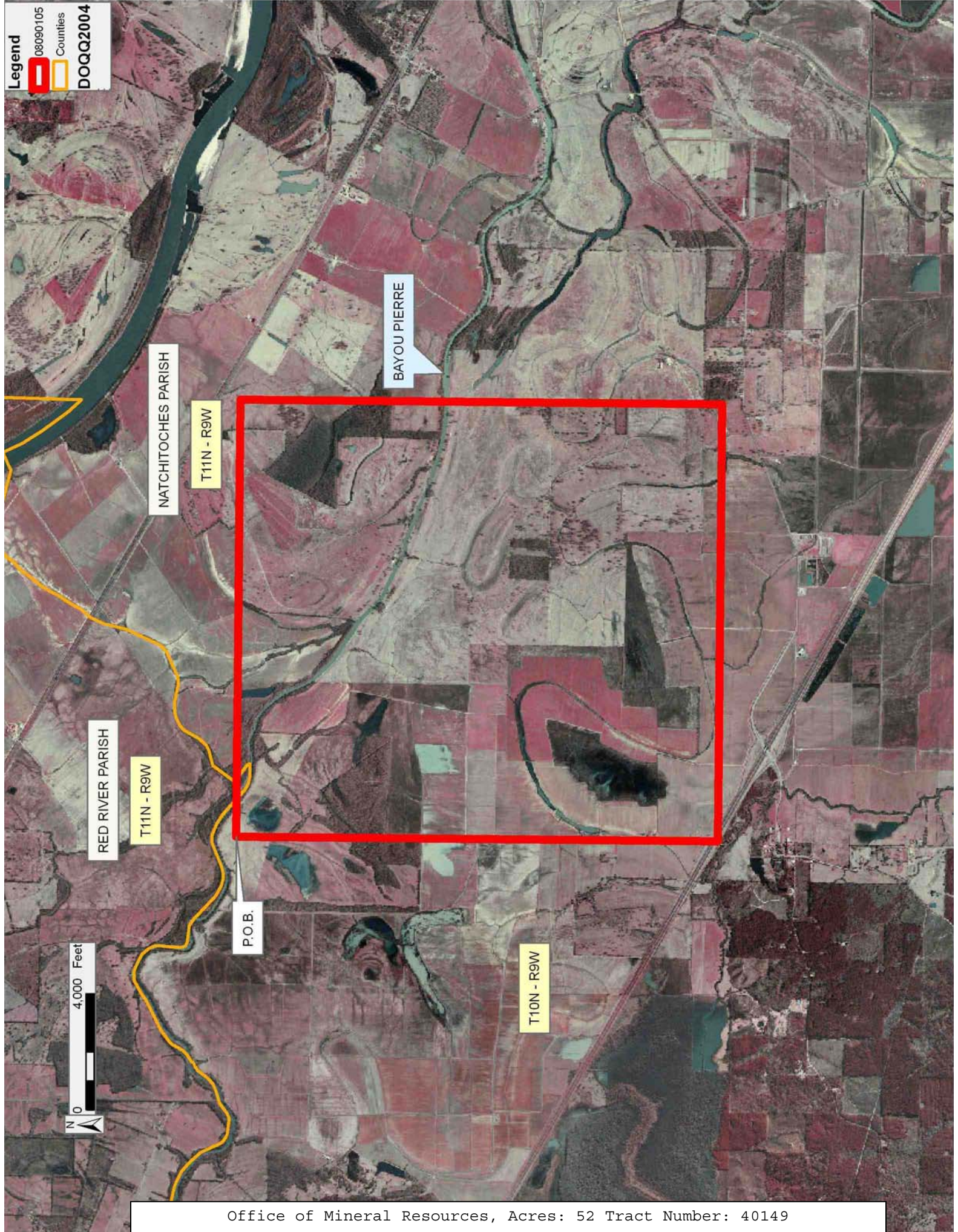
All of the lands now or formerly constituting the beds and bottoms of all water bodies of every nature and description as to which title is vested in the State of Louisiana, together with all islands arising therein and other lands formed by accretion or by reliction, where allowed by law, excepting tax adjudicated lands, and not presently under mineral lease on September 10, 2008, situated in Natchitoches and Red River Parishes, Louisiana, and more particularly described as follows: Beginning at a point having Coordinates of X = 1,755,600.00 and Y = 445,160.00; thence East 15,030.00 feet to a point having Coordinates of X = 1,770,630.00 and Y = 445,160.00; thence South 16,560.00 feet to a point having Coordinates of X = 1,770,630.00 and Y = 428,600.00; thence West 15,030.00 feet to a point having Coordinates of X = 1,755,600.00 and Y = 428,600.00; thence North 16,560.00 feet to the point of beginning, containing approximately **52 acres**, all as more particularly outlined on a plat on file in the Office of Mineral Resources, Department of Natural Resources. All bearings, distances and coordinates are based on Louisiana Coordinate System of 1927, (North or South Zone), where applicable.

NOTE: The above description of the Tract nominated for lease has been provided and corrected, where required, exclusively by the nomination party. Any mineral lease selected from this Tract and awarded by the Louisiana State Mineral Board shall be without warranty of any kind, either express, implied, or statutory, including, but not limited to, the implied warranties of merchantability and fitness for a particular purpose. Should the mineral lease awarded by the Louisiana State Mineral Board be subsequently modified, cancelled or abrogated due to the existence of conflicting leases, operating agreements, private claims or other future obligations or conditions which may affect all or any portion of the leased Tract, it shall not relieve the Lessee of the obligation to pay any bonus due thereon to the Louisiana State Mineral Board, nor shall the Louisiana State Mineral Board be obligated to refund any consideration paid by the Lessor prior to such modification, cancellation, or abrogation, including, but not limited to, bonuses, rentals and royalties.

Applicant: THEOPHILUS OIL, GAS & LAND SERVICES, LLC

Bidder	Cash Payment	Price/Acre	Rental	Oil	Gas	Other

Legend
08090105
Counties
DOQQ2004



TRACT 40150 - Natchitoches Parish, Louisiana

All of the lands now or formerly constituting the beds and bottoms of all water bodies of every nature and description as to which title is vested in the State of Louisiana, together with all islands arising therein and other lands formed by accretion or by reliction, where allowed by law, excepting tax adjudicated lands, and not presently under mineral lease on September 10, 2008, situated in Natchitoches Parish, Louisiana, and more particularly described as follows: Beginning at a point having Coordinates of X = 1,786,570.00 and Y = 444,355.00; thence East 15,940.00 feet to a point having Coordinates of X = 1,802,510.00 and Y = 444,355.00; thence South 15,755.00 feet to a point having Coordinates of X = 1,802,510.00 and Y = 428,600.00; thence West 15,940.00 feet to a point having Coordinates of X = 1,786,570.00 and Y = 428,600.00; thence North 15,755.00 feet to the point of beginning, containing approximately **93 acres**, all as more particularly outlined on a plat on file in the Office of Mineral Resources, Department of Natural Resources. All bearings, distances and coordinates are based on Louisiana Coordinate System of 1927, (North or South Zone), where applicable.

NOTE: The above description of the Tract nominated for lease has been provided and corrected, where required, exclusively by the nomination party. Any mineral lease selected from this Tract and awarded by the Louisiana State Mineral Board shall be without warranty of any kind, either express, implied, or statutory, including, but not limited to, the implied warranties of merchantability and fitness for a particular purpose. Should the mineral lease awarded by the Louisiana State Mineral Board be subsequently modified, cancelled or abrogated due to the existence of conflicting leases, operating agreements, private claims or other future obligations or conditions which may affect all or any portion of the leased Tract, it shall not relieve the Lessee of the obligation to pay any bonus due thereon to the Louisiana State Mineral Board, nor shall the Louisiana State Mineral Board be obligated to refund any consideration paid by the Lessor prior to such modification, cancellation, or abrogation, including, but not limited to, bonuses, rentals and royalties.

Applicant: THEOPHILUS OIL GAS & LAND SERVICES, LLC

Bidder	Cash Payment	Price/Acre	Rental	Oil	Gas	Other

NATCHITOCHES PARISH

T11N - R7W

RED RIVER CAMPTI REALIGNMENT



T10N - R8W

P.O.B.

RED RIVER

THREE LEAGUE BAYOU

BAYOU PIERRE

4,000 Feet



TRACT 40151 - Natchitoches Parish, Louisiana

All of the lands now or formerly constituting the beds and bottoms of all water bodies of every nature and description as to which title is vested in the State of Louisiana, together with all islands arising therein and other lands formed by accretion or by reliction, where allowed by law, excepting tax adjudicated lands, and not presently under mineral lease on September 10, 2008, situated in Natchitoches Parish, Louisiana, and more particularly described as follows: Beginning at a point having Coordinates of X = 1,770,630.00 and Y = 444,355.00; thence East 15,940.00 feet to a point having Coordinates of X = 1,786,570.00 and Y = 444,355.00; thence South 15,755.00 feet to a point having Coordinates of X = 1,786,570.00 and Y = 428,600.00; thence West 15,940.00 feet to a point having Coordinates of X = 1,770,630.00 and Y = 428,600.00; thence North 15,755.00 feet to the point of beginning, containing approximately **191 acres**, all as more particularly outlined on a plat on file in the Office of Mineral Resources, Department of Natural Resources. All bearings, distances and coordinates are based on Louisiana Coordinate System of 1927, (North or South Zone), where applicable.

NOTE: The above description of the Tract nominated for lease has been provided and corrected, where required, exclusively by the nomination party. Any mineral lease selected from this Tract and awarded by the Louisiana State Mineral Board shall be without warranty of any kind, either express, implied, or statutory, including, but not limited to, the implied warranties of merchantability and fitness for a particular purpose. Should the mineral lease awarded by the Louisiana State Mineral Board be subsequently modified, cancelled or abrogated due to the existence of conflicting leases, operating agreements, private claims or other future obligations or conditions which may affect all or any portion of the leased Tract, it shall not relieve the Lessee of the obligation to pay any bonus due thereon to the Louisiana State Mineral Board, nor shall the Louisiana State Mineral Board be obligated to refund any consideration paid by the Lessor prior to such modification, cancellation, or abrogation, including, but not limited to, bonuses, rentals and royalties.

Applicant: THEOPHILUS OIL GAS & LAND SERVICES, LLC

Bidder	Cash Payment	Price/Acre	Rental	Oil	Gas	Other

NATCHITOCHE PARISH

RED RIVER

T11N - R8W

P.O.B.

BAYOU PIERRE

THREE LEAGUE BAYOU

SHELLEY BAYOU

FLAT RIVER

T10N - R9W

0 4,000 Feet

TRACT 40152 - Natchitoches Parish, Louisiana

All of the lands now or formerly constituting the beds and bottoms of all water bodies of every nature and description as to which title is vested in the State of Louisiana, together with all islands arising therein and other lands formed by accretion or by reliction, where allowed by law, excepting tax adjudicated lands, and not presently under mineral lease on September 10, 2008, situated in Natchitoches Parish, Louisiana, and more particularly described as follows: Beginning at a point having Coordinates of X = 1,749,600.00 and Y = 435,600.00; thence East 6,000.00 feet to a point having Coordinates of X = 1,755,600.00 and Y = 435,600.00; thence South 12,000.00 feet to a point having Coordinates of X = 1,755,600.00 and Y = 423,600.00; thence West 6,000.00 feet to a point having Coordinates of X = 1,749,600.00 and Y = 423,600.00; thence North 12,000.00 feet to the point of beginning, containing approximately **20 acres**, all as more particularly outlined on a plat on file in the Office of Mineral Resources, Department of Natural Resources. All bearings, distances and coordinates are based on Louisiana Coordinate System of 1927, (North or South Zone), where applicable.

NOTE: The above description of the Tract nominated for lease has been provided and corrected, where required, exclusively by the nomination party. Any mineral lease selected from this Tract and awarded by the Louisiana State Mineral Board shall be without warranty of any kind, either express, implied, or statutory, including, but not limited to, the implied warranties of merchantability and fitness for a particular purpose. Should the mineral lease awarded by the Louisiana State Mineral Board be subsequently modified, cancelled or abrogated due to the existence of conflicting leases, operating agreements, private claims or other future obligations or conditions which may affect all or any portion of the leased Tract, it shall not relieve the Lessee of the obligation to pay any bonus due thereon to the Louisiana State Mineral Board, nor shall the Louisiana State Mineral Board be obligated to refund any consideration paid by the Lessor prior to such modification, cancellation, or abrogation, including, but not limited to, bonuses, rentals and royalties.

Applicant: THEOPHILUS OIL, GAS & LAND SERVICES, LLC

Bidder	Cash Payment	Price/Acre	Rental	Oil	Gas	Other

NATCHITOCHEES PARISH

T10N - R9W

P.O.B.

BAYOU TAPALCAT

ROCKS BAYOU

0 3,000 Feet



TRACT 40153 - De Soto and Sabine Parishes, Louisiana

All of the lands now or formerly constituting the beds and bottoms of all water bodies of every nature and description as to which title is vested in the State of Louisiana, together with all islands arising therein and other lands formed by accretion or by reliction, where allowed by law, excepting tax adjudicated lands, and not presently under mineral lease on September 10, 2008, situated in De Soto and Sabine Parishes, Louisiana, and more particularly described as follows: Beginning at a point having Coordinates of X = 1,565,065.00 and Y = 431,092.50; thence East 15,840.00 feet to a point having Coordinates of X = 1,580,905.00 and Y = 431,092.50; thence South 10,329.21 feet to a point on the Northeastern boundary of State Lease No. 18183 having Coordinates of X = 1,580,905.00 and Y = 420,763.29; thence along the boundary of said State Lease No. 18183 the following courses: North 47 degrees 00 minutes 02 seconds West 2,124.67 feet to a corner having Coordinates of X = 1,579,351.10 and Y = 422,212.30; South 53 degrees 32 minutes 52 seconds West 4,748.12 feet to a corner having Coordinates of X = 1,575,531.93 and Y = 419,391.20 and South 47 degrees 00 minutes 02 seconds East 4,344.49 feet to its Southernmost corner, also being the Northwest corner of State Lease No. 17329, as amended, having Coordinates of X = 1,578,709.32 and Y = 416,428.29; thence along the boundary of said State Lease No. 17329 the following courses: South 26 degrees 00 minutes 00 seconds East 1,051.33 feet to a corner having Coordinates of X = 1,579,170.19 and Y = 415,483.36 and North 53 degrees 32 minutes 52 seconds East 2,156.78 feet to a point having Coordinates of X = 1,580,905.00 and Y = 416,764.81; thence South 2,559.81 feet to a point having Coordinates of X = 1,580,905.00 and Y = 414,205.00; thence West 15,840.00 feet to a point having Coordinates of X = 1,565,065.00 and Y = 414,205.00; thence North 16,887.50 feet to the point of beginning, containing approximately **95 acres, LESS AND EXCEPT** that portion thereof, if any, located West of the boundary line between the States of Texas and Louisiana as determined by the report of the Special Master and adjudicated by the Supreme Court of the United States in litigation styled **Texas v. Louisiana, et al No. 36 Original**, or as otherwise approved by said court, all as more particularly outlined on a plat on file in the Office of Mineral Resources, Department of Natural Resources. All bearings, distances and coordinates are based on Louisiana Coordinate System of 1927, (North or South Zone), where applicable.

NOTE: The above description of the Tract nominated for lease has been provided and corrected, where required, exclusively by the nomination party. Any mineral lease selected from this Tract and awarded by the Louisiana State Mineral Board shall be without warranty of any kind, either express, implied, or statutory, including, but not limited to, the implied warranties of merchantability and fitness for a particular purpose. Should the mineral lease awarded by the Louisiana State Mineral Board be subsequently modified, cancelled or abrogated due to the existence of conflicting leases, operating agreements, private claims or other future obligations or conditions which may affect all or any portion of the leased Tract, it shall not relieve the Lessee of the obligation to

pay any bonus due thereon to the Louisiana State Mineral Board, nor shall the Louisiana State Mineral Board be obligated to refund any consideration paid by the Lessor prior to such modification, cancellation, or abrogation, including, but not limited to, bonuses, rentals and royalties.

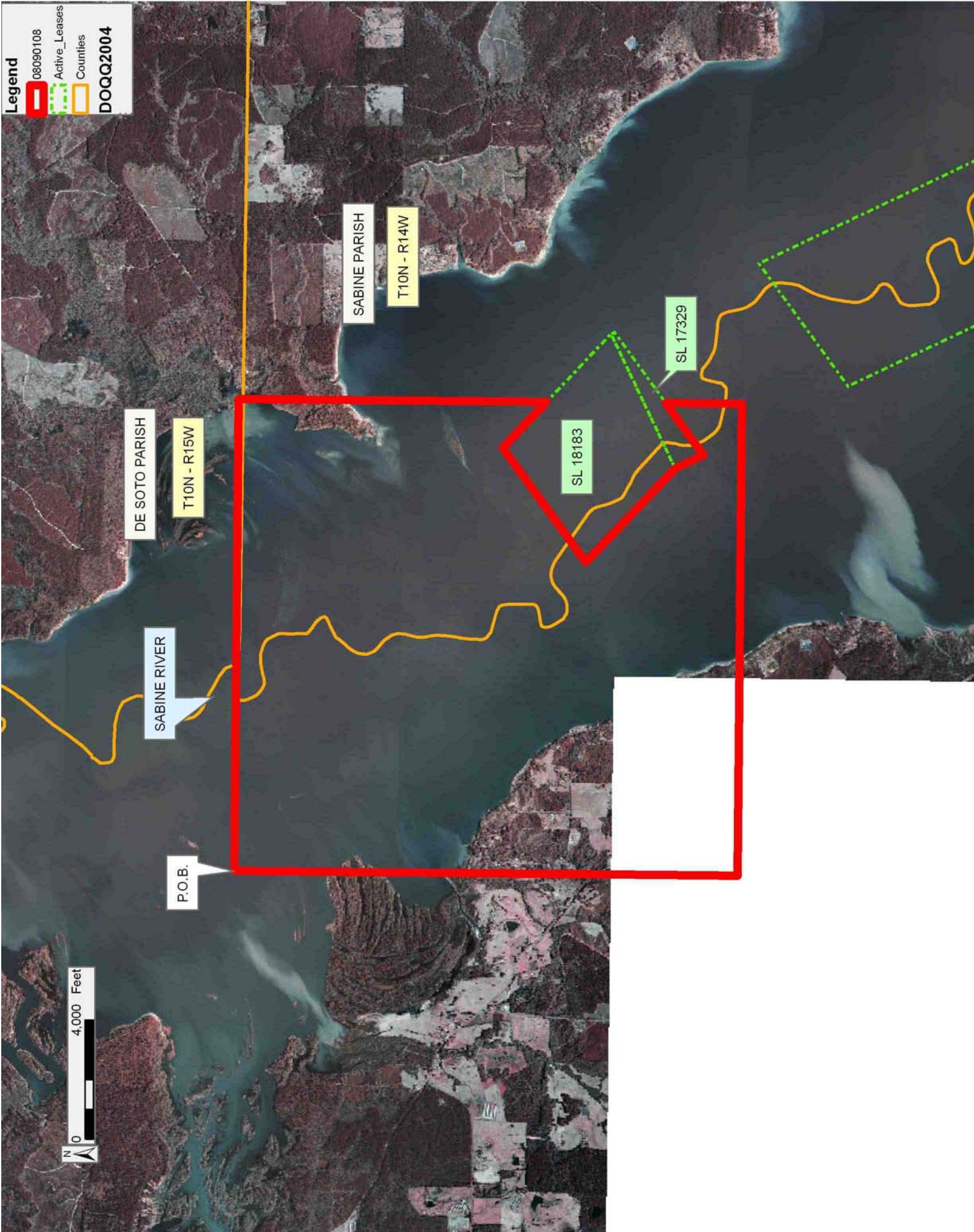
Applicant: THEOPHILUS OIL, GAS & LAND SERVICES, LLC

Bidder	Cash Payment	Price/Acre	Rental	Oil	Gas	Other

Legend

- 08090108
- Active_Leases
- Counties

DOQQ2004



TRACT 40154 - De Soto and Sabine Parishes, Louisiana

All of the lands now or formerly constituting the beds and bottoms of all water bodies of every nature and description as to which title is vested in the State of Louisiana, together with all islands arising therein and other lands formed by accretion or by reliction, where allowed by law, excepting tax adjudicated lands, and not presently under mineral lease on September 10, 2008, situated in De Soto and Sabine Parishes, Louisiana, and more particularly described as follows: Beginning at a point having Coordinates of X = 1,580,905.00 and Y = 431,092.50; thence East 15,902.50 feet to a point having Coordinates of X = 1,596,807.50 and Y = 431,092.50; thence South 15,887.50 feet to a point having Coordinates of X = 1,596,807.50 and Y = 415,205.00; thence West 15,902.50 feet to a point having Coordinates of X = 1,580,905.00 and Y = 415,205.00; thence North 1,559.81 feet to a point on the Southeastern boundary of State Lease No. 17329, as amended, having Coordinates of X = 1,580,905.00 and Y = 416,764.81; thence along the boundary of said State Lease No. 17329 the following courses: North 53 degrees 32 minutes 52 seconds East 2,927.60 feet to a corner having Coordinates of X = 1,583,259.82 and Y = 418,504.25 and North 26 degrees 00 minutes 00 seconds West 128.95 feet to its Northeast corner, also being the Easternmost corner of State Lease No. 18183 having Coordinates of X = 1,583,203.29 and Y = 418,620.15; thence North 47 degrees 00 minutes 02 seconds West 3,142.48 feet along the Northeastern boundary of said State Lease No. 18183 to a point having Coordinates of X = 1,580,905.00 and Y = 420,763.29; thence North 10,329.21 feet to the point of beginning, containing approximately **40 acres, LESS AND EXCEPT** that portion thereof, if any, located West of the boundary line between the States of Texas and Louisiana as determined by the report of the Special Master and adjudicated by the Supreme Court of the United States in litigation styled **Texas v. Louisiana, et al No. 36 Original**, or as otherwise approved by said court, all as more particularly outlined on a plat on file in the Office of Mineral Resources, Department of Natural Resources. All bearings, distances and coordinates are based on Louisiana Coordinate System of 1927, (North or South Zone), where applicable.

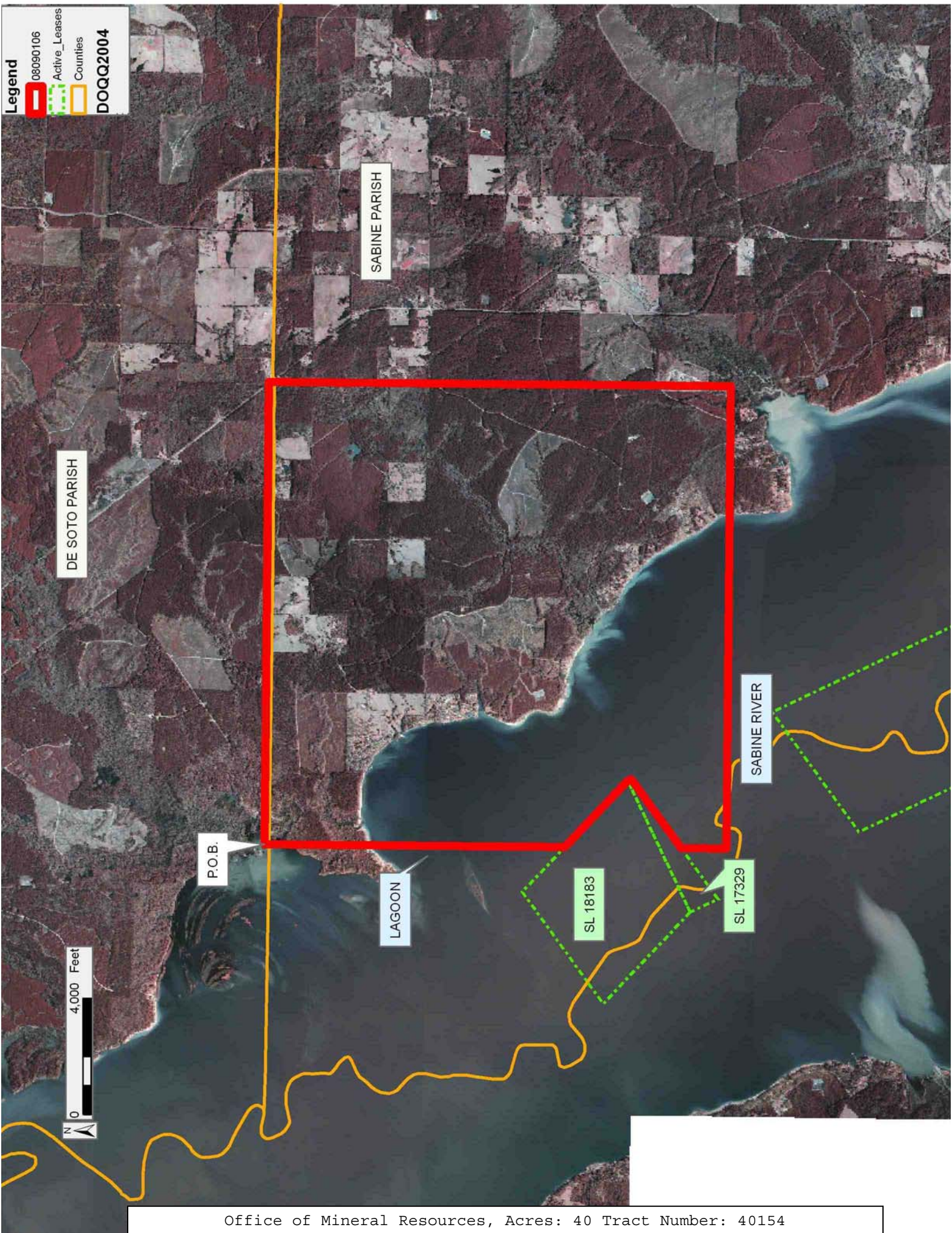
NOTE: The above description of the Tract nominated for lease has been provided and corrected, where required, exclusively by the nomination party. Any mineral lease selected from this Tract and awarded by the Louisiana State Mineral Board shall be without warranty of any kind, either express, implied, or statutory, including, but not limited to, the implied warranties of merchantability and fitness for a particular purpose. Should the mineral lease awarded by the Louisiana State Mineral Board be subsequently modified, cancelled or abrogated due to the existence of conflicting leases, operating agreements, private claims or other future obligations or conditions which may affect all or any portion of the leased Tract, it shall not relieve the Lessee of the obligation to pay any bonus due thereon to the Louisiana State Mineral Board, nor shall the Louisiana State Mineral Board be obligated to refund any consideration paid by the Lessor prior to such modification, cancellation, or abrogation, including, but not limited to, bonuses, rentals and royalties.

Applicant: THEOPHILUS OIL, GAS & LAND SERVICES, LLC

Bidder	Cash Payment	Price/Acre	Rental	Oil	Gas	Other

Legend

- 08090106
- Active_Leases
- Counties
- DOQQ2004



TRACT 40155 - Natchitoches Parish, Louisiana

All of the lands now or formerly constituting the beds and bottoms of all water bodies of every nature and description as to which title is vested in the State of Louisiana, together with all islands arising therein and other lands formed by accretion or by reliction, where allowed by law, excepting tax adjudicated lands, and not presently under mineral lease on September 10, 2008, situated in Natchitoches Parish, Louisiana, and more particularly described as follows: Beginning at a point having Coordinates of X = 1,786,570.00 and Y = 428,600.00; thence East 15,940.00 feet to a point having Coordinates of X = 1,802,510.00 and Y = 428,600.00; thence South 15,755.00 feet to a point having Coordinates of X = 1,802,510.00 and Y = 412,845.00; thence West 15,940.00 feet to a point having Coordinates of X = 1,786,570.00 and Y = 412,845.00; thence North 15,755.00 feet to the point of beginning, containing approximately **127 acres**, all as more particularly outlined on a plat on file in the Office of Mineral Resources, Department of Natural Resources. All bearings, distances and coordinates are based on Louisiana Coordinate System of 1927, (North or South Zone), where applicable.

NOTE: The above description of the Tract nominated for lease has been provided and corrected, where required, exclusively by the nomination party. Any mineral lease selected from this Tract and awarded by the Louisiana State Mineral Board shall be without warranty of any kind, either express, implied, or statutory, including, but not limited to, the implied warranties of merchantability and fitness for a particular purpose. Should the mineral lease awarded by the Louisiana State Mineral Board be subsequently modified, cancelled or abrogated due to the existence of conflicting leases, operating agreements, private claims or other future obligations or conditions which may affect all or any portion of the leased Tract, it shall not relieve the Lessee of the obligation to pay any bonus due thereon to the Louisiana State Mineral Board, nor shall the Louisiana State Mineral Board be obligated to refund any consideration paid by the Lessor prior to such modification, cancellation, or abrogation, including, but not limited to, bonuses, rentals and royalties.

Applicant: THEOPHILUS OIL, GAS & LAND SERVICES, LLC

Bidder	Cash Payment	Price/Acre	Rental	Oil	Gas	Other

