

TRACT 40126 - De Soto and Red River Parishes, Louisiana

All of the lands now or formerly constituting the beds and bottoms of all water bodies of every nature and description as to which title is vested in the State of Louisiana, together with all islands arising therein and other lands formed by accretion or by reliction, where allowed by law, excepting tax adjudicated lands, and not presently under mineral lease on September 10, 2008, situated in De Soto and Red River Parishes, Louisiana, and more particularly described as follows: Beginning at a point having Coordinates of X = 1,708,190.00 and Y = 493,300.00; thence East 15,875.00 feet to a point having Coordinates of X = 1,724,065.00 and Y = 493,300.00; thence South 15,935.00 feet to a point having Coordinates of X = 1,724,065.00 and Y = 477,365.00; thence West 13,565.00 feet to a point on the East boundary of State Lease No. 15500 having Coordinates of X = 1,710,500.00 and Y = 477,365.00; thence along the East and North boundary of said State Lease No. 15500 the following courses and distances: North 235.00 feet to a corner having Coordinates of X = 1,710,500.00 and Y = 477,600.00 and West 2,310.00 feet to a point having Coordinates of X = 1,708,190.00 and Y = 477,600.00; thence North 15,700.00 feet to the point of beginning, containing approximately **86 acres**, all as more particularly outlined on a plat on file in the Office of Mineral Resources, Department of Natural Resources. All bearings, distances and coordinates are based on Louisiana Coordinate System of 1927, (North or South Zone), where applicable.

NOTE: The above description of the Tract nominated for lease has been provided and corrected, where required, exclusively by the nomination party. Any mineral lease selected from this Tract and awarded by the Louisiana State Mineral Board shall be without warranty of any kind, either express, implied, or statutory, including, but not limited to, the implied warranties of merchantability and fitness for a particular purpose. Should the mineral lease awarded by the Louisiana State Mineral Board be subsequently modified, cancelled or abrogated due to the existence of conflicting leases, operating agreements, private claims or other future obligations or conditions which may affect all or any portion of the leased Tract, it shall not relieve the Lessee of the obligation to pay any bonus due thereon to the Louisiana State Mineral Board, nor shall the Louisiana State Mineral Board be obligated to refund any consideration paid by the Lessor prior to such modification, cancellation, or abrogation, including, but not limited to, bonuses, rentals and royalties.

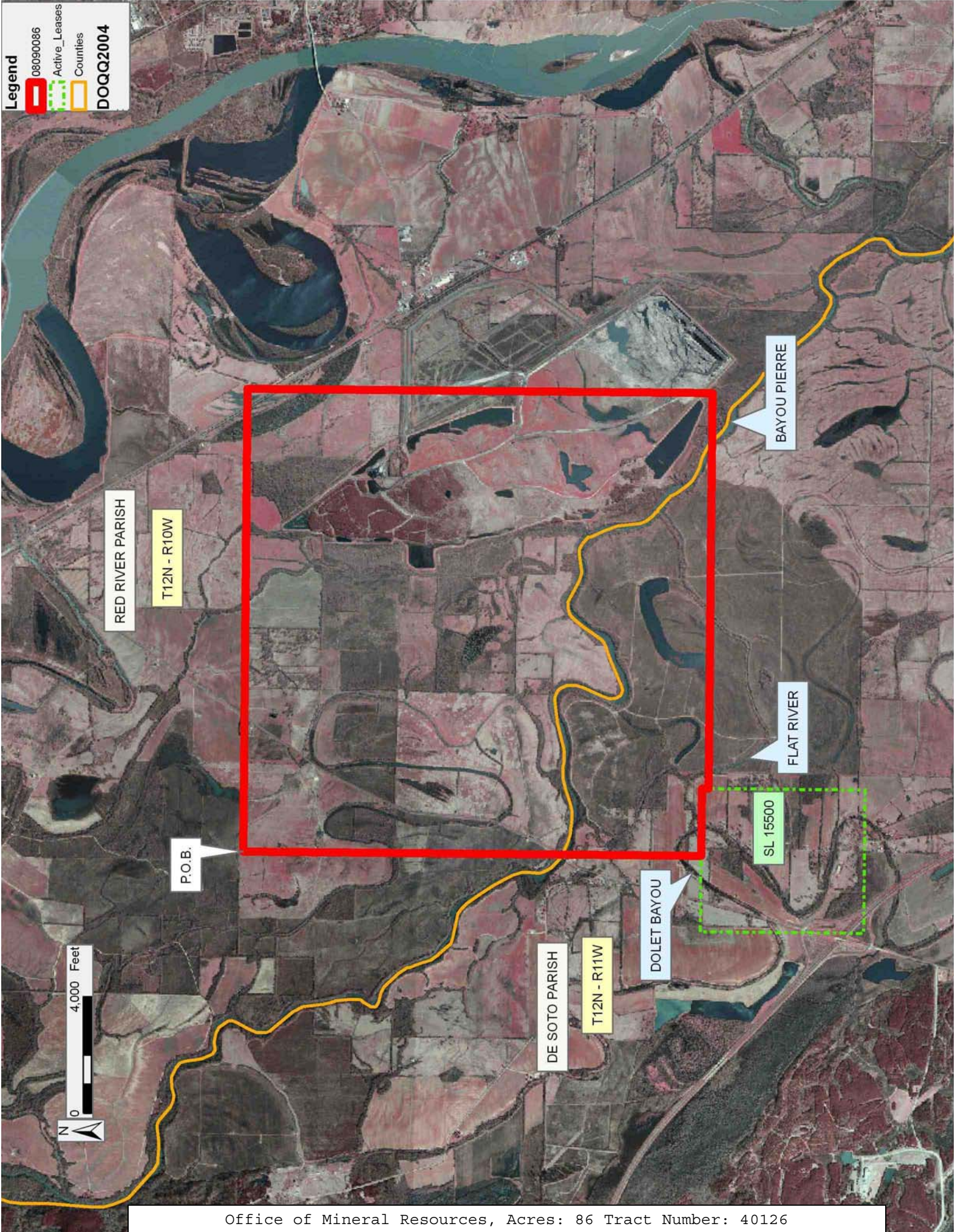
Bidder	Cash Payment	Price/Acre	Rental	Oil	Gas	Other

Applicant: THEOPHILUS OIL GAS & LAND SERVICES, LLC

Legend

- █ 08090086
- █ Active_Leases
- █ Counties

DOQQ2004



TRACT 40127 - Red River Parish, Louisiana

All of the lands now or formerly constituting the beds and bottoms of all water bodies of every nature and description as to which title is vested in the State of Louisiana, together with all islands arising therein and other lands formed by accretion or by reliction, where allowed by law, excepting tax adjudicated lands, and not presently under mineral lease on September 10, 2008, situated in Red River Parish, Louisiana, and more particularly described as follows: Beginning at a point having Coordinates of X = 1,724,065.00 and Y = 493,300.00; thence East 15,875.00 feet to a point having Coordinates of X = 1,739,940.00 and Y = 493,300.00; thence South 15,935.00 feet to a point having Coordinates of X = 1,739,940.00 and Y = 477,365.00; thence West 15,875.00 feet to a point having Coordinates of X = 1,724,065.00 and Y = 477,365.00; thence North 15,935.00 feet to the point of beginning, containing approximately **462 acres**, all as more particularly outlined on a plat on file in the Office of Mineral Resources, Department of Natural Resources. All bearings, distances and coordinates are based on Louisiana Coordinate System of 1927, (North or South Zone), where applicable.

NOTE: The above description of the Tract nominated for lease has been provided and corrected, where required, exclusively by the nomination party. Any mineral lease selected from this Tract and awarded by the Louisiana State Mineral Board shall be without warranty of any kind, either express, implied, or statutory, including, but not limited to, the implied warranties of merchantability and fitness for a particular purpose. Should the mineral lease awarded by the Louisiana State Mineral Board be subsequently modified, cancelled or abrogated due to the existence of conflicting leases, operating agreements, private claims or other future obligations or conditions which may affect all or any portion of the leased Tract, it shall not relieve the Lessee of the obligation to pay any bonus due thereon to the Louisiana State Mineral Board, nor shall the Louisiana State Mineral Board be obligated to refund any consideration paid by the Lessor prior to such modification, cancellation, or abrogation, including, but not limited to, bonuses, rentals and royalties.

Applicant: THEOPHILUS OIL GAS & LAND SERVICES, LLC

Bidder	Cash Payment	Price/Acre	Rental	Oil	Gas	Other

RED RIVER PARISH

T12N - R10W

RED RIVER

P.O.B.

T11N - R10W

4,000 Feet



TRACT 40128 - Natchitoches and Red River Parishes, Louisiana

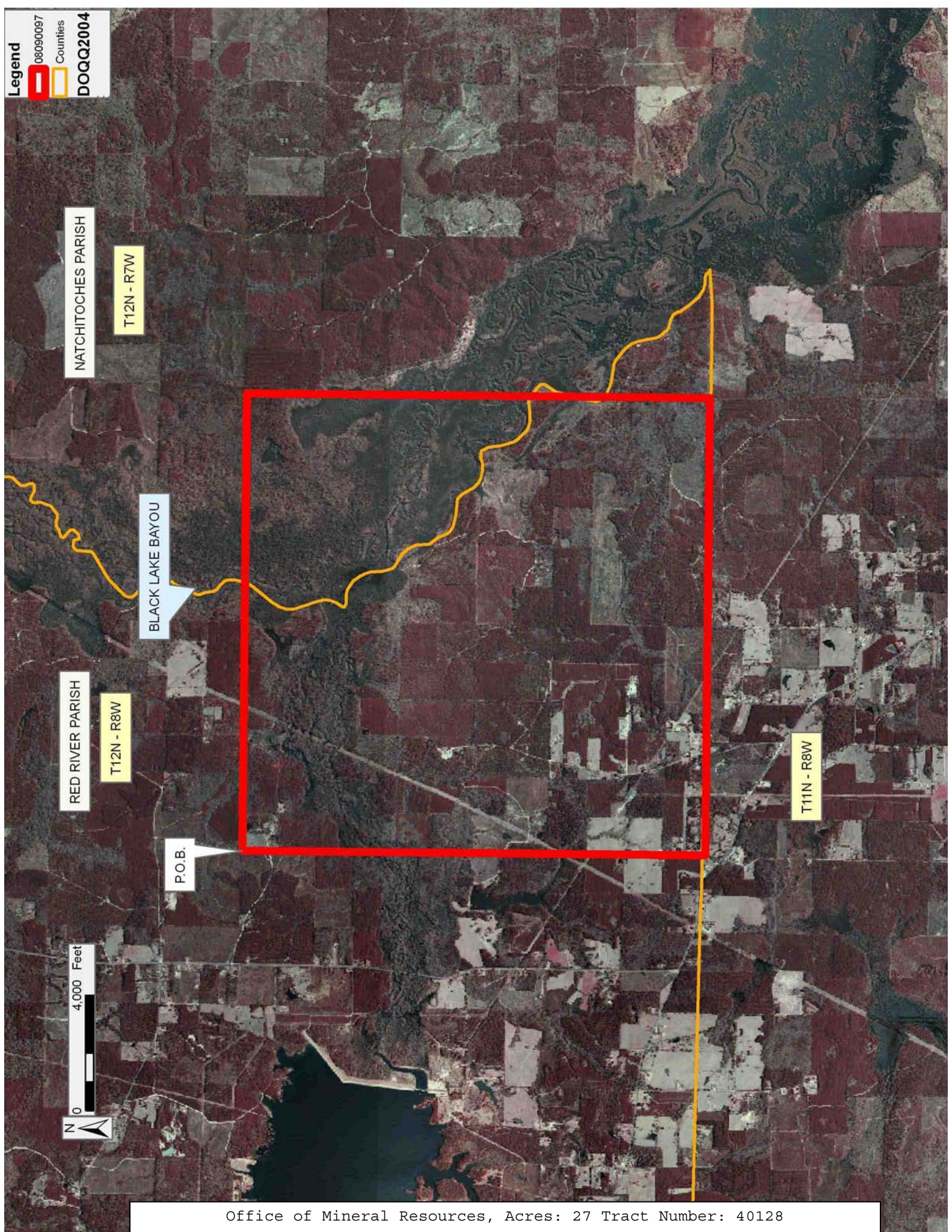
All of the lands now or formerly constituting the beds and bottoms of all water bodies of every nature and description as to which title is vested in the State of Louisiana, together with all islands arising therein and other lands formed by accretion or by reliction, where allowed by law, excepting tax adjudicated lands, and not presently under mineral lease on September 10, 2008, situated in Natchitoches and Red River Parishes, Louisiana, and more particularly described as follows: Beginning at a point having Coordinates of X = 1,787,160.00 and Y = 491,510.00; thence East 15,840.00 feet to a point having Coordinates of X = 1,803,000.00 and Y = 491,510.00; thence South 16,025.00 feet to a point having Coordinates of X = 1,803,000.00 and Y = 475,485.00; thence West 15,840.00 feet to a point having Coordinates of X = 1,787,160.00 and Y = 475,485.00; thence North 16,025.00 feet to the point of beginning, containing approximately **27 acres**, all as more particularly outlined on a plat on file in the Office of Mineral Resources, Department of Natural Resources. All bearings, distances and coordinates are based on Louisiana Coordinate System of 1927, (North or South Zone), where applicable.

NOTE: The above description of the Tract nominated for lease has been provided and corrected, where required, exclusively by the nomination party. Any mineral lease selected from this Tract and awarded by the Louisiana State Mineral Board shall be without warranty of any kind, either express, implied, or statutory, including, but not limited to, the implied warranties of merchantability and fitness for a particular purpose. Should the mineral lease awarded by the Louisiana State Mineral Board be subsequently modified, cancelled or abrogated due to the existence of conflicting leases, operating agreements, private claims or other future obligations or conditions which may affect all or any portion of the leased Tract, it shall not relieve the Lessee of the obligation to pay any bonus due thereon to the Louisiana State Mineral Board, nor shall the Louisiana State Mineral Board be obligated to refund any consideration paid by the Lessor prior to such modification, cancellation, or abrogation, including, but not limited to, bonuses, rentals and royalties.

Applicant: THEOPHILUS OIL GAS & LAND SERVICES, LLC

Bidder	Cash Payment	Price/Acre	Rental	Oil	Gas	Other

Legend
08090097
Counties
DOQQ2004



TRACT 40129 - De Soto Parish, Louisiana

All of the lands now or formerly constituting the beds and bottoms of all water bodies of every nature and description as to which title is vested in the State of Louisiana, together with all islands arising therein and other lands formed by accretion or by reliction, where allowed by law, excepting tax adjudicated lands, and not presently under mineral lease on September 10, 2008, situated in De Soto Parish, Louisiana, and more particularly described as follows: Beginning at a point having Coordinates of X = 1,519,940.00 and Y = 491,645.00; thence East 18,480.00 feet to a point having Coordinates of X = 1,538,420.00 and Y = 491,645.00; thence South 18,480.00 feet to a point having Coordinates of X = 1,538,420.00 and Y = 473,165.00; thence West 18,480.00 feet to a point having Coordinates of X = 1,519,940.00 and Y = 473,165.00; thence North 18,480.00 feet to the point of beginning, **LESS AND EXCEPT** any portion of State Lease No. 376 that may lie within the above described tract, containing approximately **60 acres, LESS AND EXCEPT** that portion thereof, if any, located West of the boundary line between the States of Texas and Louisiana as determined by the report of the Special Master and adjudicated by the Supreme Court of the United States in litigation styled **Texas v. Louisiana, et al No. 36 Original**, or as otherwise approved by said court, all as more particularly outlined on a plat on file in the Office of Mineral Resources, Department of Natural Resources. All bearings, distances and coordinates are based on Louisiana Coordinate System of 1927, (North or South Zone), where applicable.

NOTE: The above description of the Tract nominated for lease has been provided and corrected, where required, exclusively by the nomination party. Any mineral lease selected from this Tract and awarded by the Louisiana State Mineral Board shall be without warranty of any kind, either express, implied, or statutory, including, but not limited to, the implied warranties of merchantability and fitness for a particular purpose. Should the mineral lease awarded by the Louisiana State Mineral Board be subsequently modified, cancelled or abrogated due to the existence of conflicting leases, operating agreements, private claims or other future obligations or conditions which may affect all or any portion of the leased Tract, it shall not relieve the Lessee of the obligation to pay any bonus due thereon to the Louisiana State Mineral Board, nor shall the Louisiana State Mineral Board be obligated to refund any consideration paid by the Lessor prior to such modification, cancellation, or abrogation, including, but not limited to, bonuses, rentals and royalties.

Applicant: THEOPHILUS OIL GAS & LAND SERVICES, LLC

Bidder	Cash Payment	Price/Acre	Rental	Oil	Gas	Other

Legend
08090080
Active_Leases
DOQQ2004



TRACT 40130 - Winn Parish, Louisiana

All of the lands now or formerly constituting the beds and bottoms of all water bodies of every nature and description as to which title is vested in the State of Louisiana, together with all islands arising therein and other lands formed by accretion or by reliction, where allowed by law, excepting tax adjudicated lands, and not presently under mineral lease on September 10, 2008, situated in Winn Parish, Louisiana, and more particularly described as follows: Beginning at a point having Coordinates of X = 1,920,701.35 and Y = 489,863.23; thence South 85 degrees 04 minutes 46 seconds East 5,241.01 feet to a point having Coordinates of X = 1,925,923.04 and Y = 489,413.68; thence South 82 degrees 09 minutes 04 seconds East 5,255.92 feet to a point having Coordinates of X = 1,931,129.72 and Y = 488,695.94; thence South 00 Degrees 10 minutes 08 seconds West 3,229.84 feet to a point having Coordinates of X = 1,931,120.21 and Y = 485,466.11; thence South 02 degrees 30 minutes 26 seconds East 2,091.77 feet to a point having Coordinates of X = 1,931,211.71 and Y = 483,376.33; thence North 68 degrees 07 minutes 52 seconds West 5,654.49 feet to a point having Coordinates of X = 1,925,964.12 and Y = 485,482.53; thence North 69 degrees 22 minutes 33 seconds West 5,603.14 feet to a point having Coordinates of X = 1,920,720.08 and Y = 487,456.17; thence North 00 degrees 26 minutes 46 seconds West 2,407.13 feet to the point of beginning, containing approximately **26 acres**, all as more particularly outlined on a plat on file in the Office of Mineral Resources, Department of Natural Resources. All bearings, distances and coordinates are based on Louisiana Coordinate System of 1927, (North or South Zone), where applicable.

NOTE: The above description of the Tract nominated for lease has been provided and corrected, where required, exclusively by the nomination party. Any mineral lease selected from this Tract and awarded by the Louisiana State Mineral Board shall be without warranty of any kind, either express, implied, or statutory, including, but not limited to, the implied warranties of merchantability and fitness for a particular purpose. Should the mineral lease awarded by the Louisiana State Mineral Board be subsequently modified, cancelled or abrogated due to the existence of conflicting leases, operating agreements, private claims or other future obligations or conditions which may affect all or any portion of the leased Tract, it shall not relieve the Lessee of the obligation to pay any bonus due thereon to the Louisiana State Mineral Board, nor shall the Louisiana State Mineral Board be obligated to refund any consideration paid by the Lessor prior to such modification, cancellation, or abrogation, including, but not limited to, bonuses, rentals and royalties.

Applicant: ASLAN, LLC

Bidder	Cash Payment	Price/Acre	Rental	Oil	Gas	Other

Legend
08090016
DOQQ2004

WINN PARISH

T12N - R4W

P.O.B.

DUGDEMONA RIVER



TRACT 40131 - Winn Parish, Louisiana

All of the lands now or formerly constituting the beds and bottoms of all water bodies of every nature and description as to which title is vested in the State of Louisiana, together with all islands arising therein and other lands formed by accretion or by reliction, where allowed by law, excepting tax adjudicated lands, and not presently under mineral lease on September 10, 2008, situated in Winn Parish, Louisiana, and more particularly described as follows: Beginning at a point having Coordinates of X = 1,931,129.72 and Y = 488,695.94; thence South 00 degrees 10 minutes 08 seconds West 3,229.84 feet to a point having Coordinates of X = 1,931,120.21 and Y = 485,466.11; thence South 02 degrees 30 minutes 26 seconds East 2,091.77 feet to a point having Coordinates of X = 1,931,211.71 and Y = 483,376.33; thence South 76 degrees 00 minutes 58 seconds East 2,564.57 feet to a point having Coordinates of X = 1,933,700.28 and Y = 482,756.60; thence South 74 degrees 45 minutes 45 seconds East 2,870.97 feet to a point having Coordinates of X = 1,936,470.32 and Y = 482,002.06; thence North 02 degrees 17 minutes 34 seconds West 2,257.64 feet to a point having Coordinates of X = 1,936,380.00 and Y = 484,257.89; thence North 41 degrees 26 minutes 01 seconds West 2,754.21 feet to a point having Coordinates of 1,934,557.39 and Y = 486,322.78; thence North 47 degrees 46 minutes 45 seconds West 2,604.68 feet to a point having Coordinates of X = 1,932,628.46 and Y = 488,073.10; thence North 67 degrees 26 minutes 01 seconds West 1,623.01 feet to the point of beginning, containing approximately **12 acres**, all as more particularly outlined on a plat on file in the Office of Mineral Resources, Department of Natural Resources. All bearings, distances and coordinates are based on Louisiana Coordinate System of 1927, (North or South Zone), where applicable.

NOTE: The above description of the Tract nominated for lease has been provided and corrected, where required, exclusively by the nomination party. Any mineral lease selected from this Tract and awarded by the Louisiana State Mineral Board shall be without warranty of any kind, either express, implied, or statutory, including, but not limited to, the implied warranties of merchantability and fitness for a particular purpose. Should the mineral lease awarded by the Louisiana State Mineral Board be subsequently modified, cancelled or abrogated due to the existence of conflicting leases, operating agreements, private claims or other future obligations or conditions which may affect all or any portion of the leased Tract, it shall not relieve the Lessee of the obligation to pay any bonus due thereon to the Louisiana State Mineral Board, nor shall the Louisiana State Mineral Board be obligated to refund any consideration paid by the Lessor prior to such modification, cancellation, or abrogation, including, but not limited to, bonuses, rentals and royalties.

Applicant: ASLAN, LLC

Bidder	Cash Payment	Price/Acre	Rental	Oil	Gas	Other

WINN PARISH

T12N - R3W

P.O.B.

DUGDEMONA RIVER

T12N - R4W



TRACT 40132 - De Soto and Red River Parishes, Louisiana

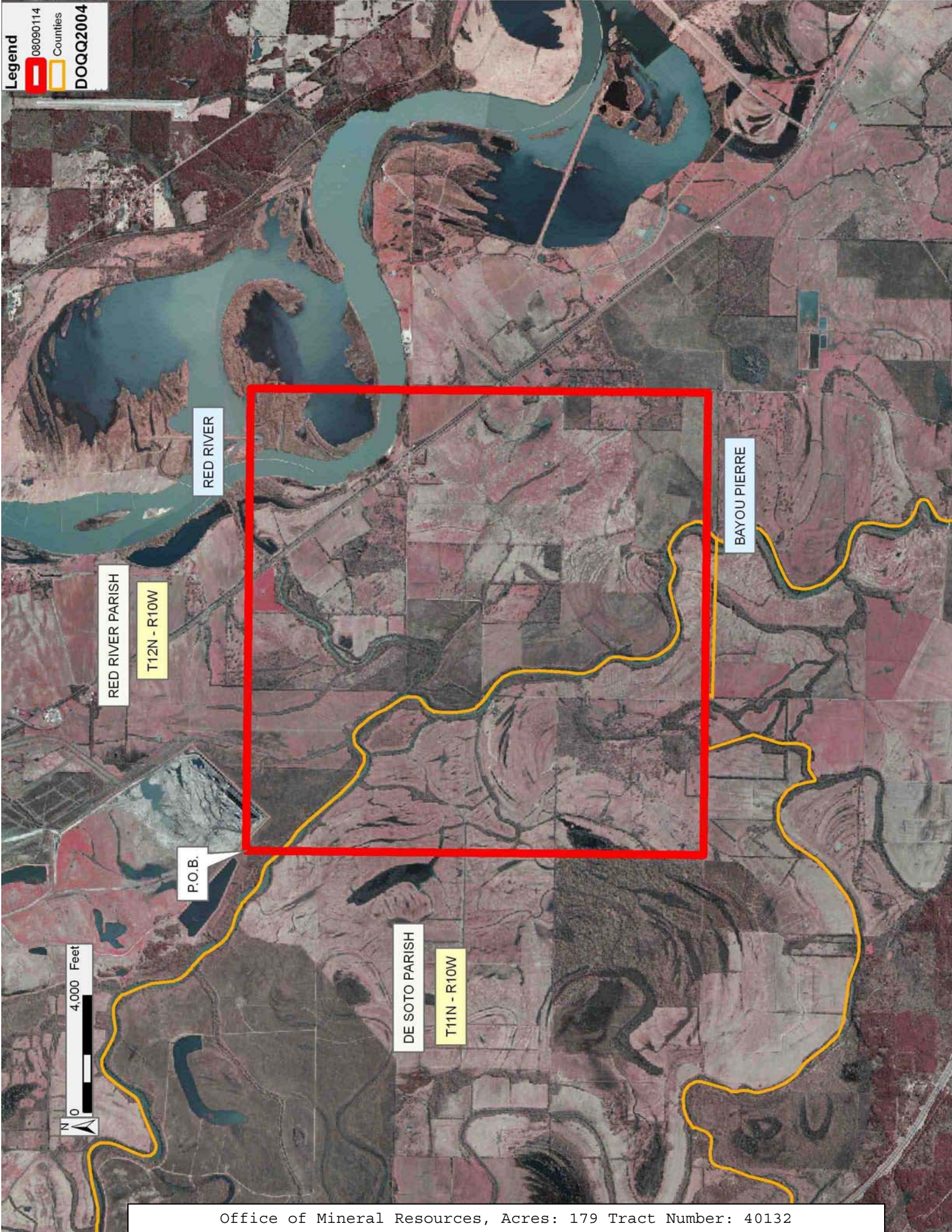
All of the lands now or formerly constituting the beds and bottoms of all water bodies of every nature and description as to which title is vested in the State of Louisiana, together with all islands arising therein and other lands formed by accretion or by reliction, where allowed by law, excepting tax adjudicated lands, and not presently under mineral lease on September 10, 2008, situated in De Soto and Red River Parishes, Louisiana, and more particularly described as follows: Beginning at a point having Coordinates of X = 1,724,065.00 and Y = 477,365.00; thence East 15,875.00 feet to a point having Coordinates of X = 1,739,940.00 and Y = 477,365.00; thence South 15,695.00 feet to a point having Coordinates of X = 1,739,940.00 and Y = 461,670.00; thence West 15,875.00 feet to a point having Coordinates of X = 1,724,065.00 and Y = 461,670.00; thence North 15,695.00 feet to the point of beginning, (This tract includes only waterbottoms claimed and owned by the state and specifically excludes any land which the state may claim or own and to which the mineral rights are vested in the state), containing approximately **179 acres**, all as more particularly outlined on a plat on file in the Office of Mineral Resources, Department of Natural Resources. All bearings, distances and coordinates are based on Louisiana Coordinate System of 1927, (North or South Zone), where applicable.

NOTE: The above description of the Tract nominated for lease has been provided and corrected, where required, exclusively by the nomination party. Any mineral lease selected from this Tract and awarded by the Louisiana State Mineral Board shall be without warranty of any kind, either express, implied, or statutory, including, but not limited to, the implied warranties of merchantability and fitness for a particular purpose. Should the mineral lease awarded by the Louisiana State Mineral Board be subsequently modified, cancelled or abrogated due to the existence of conflicting leases, operating agreements, private claims or other future obligations or conditions which may affect all or any portion of the leased Tract, it shall not relieve the Lessee of the obligation to pay any bonus due thereon to the Louisiana State Mineral Board, nor shall the Louisiana State Mineral Board be obligated to refund any consideration paid by the Lessor prior to such modification, cancellation, or abrogation, including, but not limited to, bonuses, rentals and royalties.

Bidder	Cash Payment	Price/Acre	Rental	Oil	Gas	Other

Applicant: THEOPHILUS OIL, GAS & LAND SERVICES, LLC

Legend
08090114
Counties
DOQQ2004



TRACT 40133 - De Soto Parish, Louisiana

All of the lands now or formerly constituting the beds and bottoms of all water bodies of every nature and description as to which title is vested in the State of Louisiana, together with all islands arising therein and other lands formed by accretion or by reliction, where allowed by law, excepting tax adjudicated lands, and not presently under mineral lease on September 10, 2008, situated in De Soto Parish, Louisiana, and more particularly described as follows: Beginning at a point having Coordinates of X = 1,692,315.00 and Y = 477,365.00; thence East 13,285.00 feet to a point on the West boundary of State Lease No. 15500 having Coordinates of X = 1,705,600.00 and Y = 477,365.00; thence South approximately 5,138 feet along the West boundary of said State Lease No. 15500 to a point on the North boundary of State Lease No. 7029, as amended, having a Coordinate of X = 1,705,600.00; thence along the boundary of said State Lease No. 7029 the following courses: Westerly approximately 6 feet to its Northwest corner; Southerly approximately 5,251 feet to its Southwest corner and Easterly approximately 2,732 feet to its Southeast corner; thence Southerly approximately 5,258 feet to a point having Coordinates of X = 1,708,190.00 and Y = 461,670.00; thence West 15,875.00 feet to a point having Coordinates of X = 1,692,315.00 and Y = 461,670.00; thence North 15,695.00 feet to the point of beginning, **LESS AND EXCEPT** that portion, if any, of State Lease No. 7029, as amended, that may lie within the above described tract, containing approximately **6 acres**, all as more particularly outlined on a plat on file in the Office of Mineral Resources, Department of Natural Resources. All bearings, distances and coordinates are based on Louisiana Coordinate System of 1927, (North or South Zone), where applicable.

NOTE: The above description of the Tract nominated for lease has been provided and corrected, where required, exclusively by the nomination party. Any mineral lease selected from this Tract and awarded by the Louisiana State Mineral Board shall be without warranty of any kind, either express, implied, or statutory, including, but not limited to, the implied warranties of merchantability and fitness for a particular purpose. Should the mineral lease awarded by the Louisiana State Mineral Board be subsequently modified, cancelled or abrogated due to the existence of conflicting leases, operating agreements, private claims or other future obligations or conditions which may affect all or any portion of the leased Tract, it shall not relieve the Lessee of the obligation to pay any bonus due thereon to the Louisiana State Mineral Board, nor shall the Louisiana State Mineral Board be obligated to refund any consideration paid by the Lessor prior to such modification, cancellation, or abrogation, including, but not limited to, bonuses, rentals and royalties.

Applicant: THEOPHILUS OIL GAS & LAND SERVICES, LLC

Bidder	Cash Payment	Price/Acre	Rental	Oil	Gas	Other

Legend
08090084
Active_Leases
DOQQ2004

DE SOTO PARISH

T12N - R11W

SL 15500

DOLET BAYOU

SL 7029



P.O.B.

T11N - R11W



TRACT 40134 - De Soto Natchitoches and Red River Parishes, Louisiana

All of the lands now or formerly constituting the beds and bottoms of all water bodies of every nature and description as to which title is vested in the State of Louisiana, together with all islands arising therein and other lands formed by accretion or by reliction, where allowed by law, excepting tax adjudicated lands, and not presently under mineral lease on September 10, 2008, situated in De Soto Natchitoches and Red River Parishes, Louisiana, and more particularly described as follows: Beginning at a point on the East boundary of State Lease No. 15500 having Coordinates of X = 1,710,500.00 and Y = 477,365.00; thence East 13,565.00 feet to a point having Coordinates of X = 1,724,065.00 and Y = 477,365.00; thence South 15,695.00 feet to a point having Coordinates of X = 1,724,065.00 and Y = 461,670.00; thence West 15,875.00 feet to a point having Coordinates of X = 1,708,190.00 and Y = 461,670.00; thence Northerly approximately 5,258 feet to the Southeast corner of State Lease No. 7029, as amended; thence Northerly approximately 5,071 feet along the East boundary of said Lease No. 7029 to a point of intersection with the South boundary of said State Lease No. 15500 having a Coordinate of Y = 472,000.00; thence along the boundary of said State Lease No. 15500 the following courses: Easterly approximately 2,150 feet to its Southeast corner having Coordinates of X = 1,710,500.00 and Y = 472,000.00 and North 5,365.00 feet to the point of beginning, **LESS AND EXCEPT** that portion, if any, of State Lease No. 7029, as amended, that may lie within the above described tract, containing approximately **45 acres**, all as more particularly outlined on a plat on file in the Office of Mineral Resources, Department of Natural Resources. All bearings, distances and coordinates are based on Louisiana Coordinate System of 1927, (North or South Zone), where applicable.

NOTE: The above description of the Tract nominated for lease has been provided and corrected, where required, exclusively by the nomination party. Any mineral lease selected from this Tract and awarded by the Louisiana State Mineral Board shall be without warranty of any kind, either express, implied, or statutory, including, but not limited to, the implied warranties of merchantability and fitness for a particular purpose. Should the mineral lease awarded by the Louisiana State Mineral Board be subsequently modified, cancelled or abrogated due to the existence of conflicting leases, operating agreements, private claims or other future obligations or conditions which may affect all or any portion of the leased Tract, it shall not relieve the Lessee of the obligation to pay any bonus due thereon to the Louisiana State Mineral Board, nor shall the Louisiana State Mineral Board be obligated to refund any consideration paid by the Lessor prior to such modification, cancellation, or abrogation, including, but not limited to, bonuses, rentals and royalties.

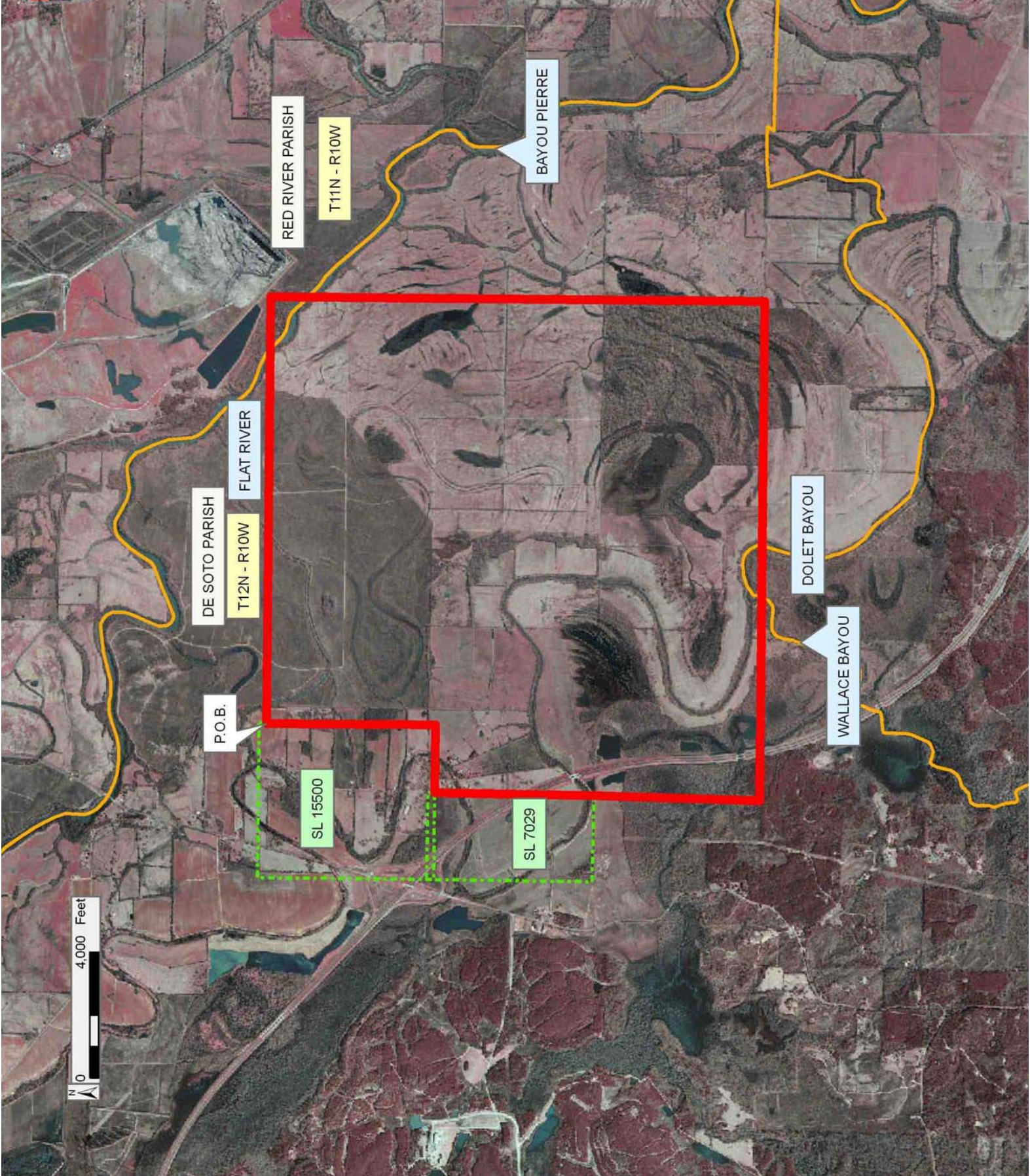
Applicant: THEOPHILUS OIL GAS & LAND SERVICES, LLC

Bidder	Cash Payment	Price/Acre	Rental	Oil	Gas	Other

Legend

- 08090081
- Active_Leases
- Counties

DOQQ2004



TRACT 40135 - Red River Parish, Louisiana

All of the lands now or formerly constituting the beds and bottoms of all water bodies of every nature and description as to which title is vested in the State of Louisiana, together with all islands arising therein and other lands formed by accretion or by reliction, where allowed by law, excepting tax adjudicated lands, and not presently under mineral lease on September 10, 2008, situated in Red River Parish, Louisiana, and more particularly described as follows: Beginning at a point having Coordinates of X = 1,739,940.00 and Y = 475,980.00; thence Easterly approximately 9,329 feet to the Northwest corner of State Lease No. 9600; thence Southerly approximately 5,580 feet along the West boundary of said State Lease No. 9600 to its Southwest corner, also being the most Northwest corner of State Lease No. 6003, as amended; thence along the West, North and West boundary of said State Lease No. 6003 the following courses and distances: Southerly approximately 5,120 feet, Westerly approximately 5,327 feet and Southerly approximately 4,073 feet to a point having a Coordinate of Y = 461,300.00; thence West approximately 3,707 feet to a point having Coordinates of X = 1,739,940.00 and Y = 461,300.00; thence North 14,680.00 feet to the point of beginning, containing approximately **404 acres**, all as more particularly outlined on a plat on file in the Office of Mineral Resources, Department of Natural Resources. All bearings, distances and coordinates are based on Louisiana Coordinate System of 1927, (North or South Zone), where applicable.

NOTE: The above description of the Tract nominated for lease has been provided and corrected, where required, exclusively by the nomination party. Any mineral lease selected from this Tract and awarded by the Louisiana State Mineral Board shall be without warranty of any kind, either express, implied, or statutory, including, but not limited to, the implied warranties of merchantability and fitness for a particular purpose. Should the mineral lease awarded by the Louisiana State Mineral Board be subsequently modified, cancelled or abrogated due to the existence of conflicting leases, operating agreements, private claims or other future obligations or conditions which may affect all or any portion of the leased Tract, it shall not relieve the Lessee of the obligation to pay any bonus due thereon to the Louisiana State Mineral Board, nor shall the Louisiana State Mineral Board be obligated to refund any consideration paid by the Lessor prior to such modification, cancellation, or abrogation, including, but not limited to, bonuses, rentals and royalties.

Applicant: THEOPHILUS OIL GAS & LAND SERVICES, LLC

Bidder	Cash Payment	Price/Acre	Rental	Oil	Gas	Other

Legend
08090046
Active_Leases
DOQQ2004

RED RIVER PARISH

T12N - R9W

SL 9600

SL 6003

SL 6003

P.O.B.

RED RIVER

T11N - R10W

