

TRACT 40116 - Red River Parish, Louisiana

All of the lands now or formerly constituting the beds and bottoms of all water bodies of every nature and description as to which title is vested in the State of Louisiana, together with all islands arising therein and other lands formed by accretion or by reliction, where allowed by law, excepting tax adjudicated lands, and not presently under mineral lease on September 10, 2008, situated in Red River Parish, Louisiana, and more particularly described as follows: Beginning at a point having Coordinates of X = 1,693,000.00 and Y = 525,310.00; thence East 9,255.00 feet to a point on the West boundary of State Lease No. 19695 having Coordinates of X = 1,702,255.00 and Y = 525,310.00; thence along the boundary of said State Lease No. 19695 the following courses: South 5,334.86 feet to a corner having Coordinates of X = 1,702,255.00 and Y = 519,975.14 and East 3,469.69 feet to the Northwest corner of State Lease No. 18503 having Coordinates of X = 1,705,724.69 and Y = 519,975.14; thence along the boundary of said State Lease No. 18503 the following courses: South 6,520.71 feet to a corner having Coordinates of X = 1,705,724.69 and Y = 513,454.43 and East 2,465.31 feet to a point having Coordinates of X = 1,708,190.00 and Y = 513,454.43; thence South 4,290.73 feet to a point having Coordinates of X = 1,708,190.00 and Y = 509,163.70; thence West 7,442.06 feet to a point on the East boundary of State Lease No. 17366, as amended, having Coordinates of X = 1,700,747.94 and Y = 509,163.70; thence North 00 degrees 30 minutes 00 seconds East 236.31 feet along the East boundary of said State Lease No. 17366 to its Northeast corner located on the South boundary of State Lease No. 18372 having Coordinates of X = 1,700,750.00 and Y = 509,400.00; thence along the boundary of said State Lease No. 18372 the following courses: East 90.00 feet to a corner having Coordinates of X = 1,700,840.00 and Y = 509,400.00; North 6,772.00 feet to a corner having Coordinates of X = 1,700,840.00 and Y = 516,172.00 and West 7,840.00 feet to the Southeast corner of State Lease No. 19351 having Coordinates of X = 1,693,000.00 and Y = 516,172.00; thence North 3,928.00 feet along the East boundary of said State Lease No. 19351 to its Northeast corner having Coordinates of X = 1,693,000.00 and Y = 520,100.00; thence North 5,210.00 feet to the point of beginning, containing approximately **43 acres**, all as more particularly outlined on a plat on file in the Office of Mineral Resources, Department of Natural Resources. All bearings, distances and coordinates are based on Louisiana Coordinate System of 1927, (North or South Zone), where applicable.

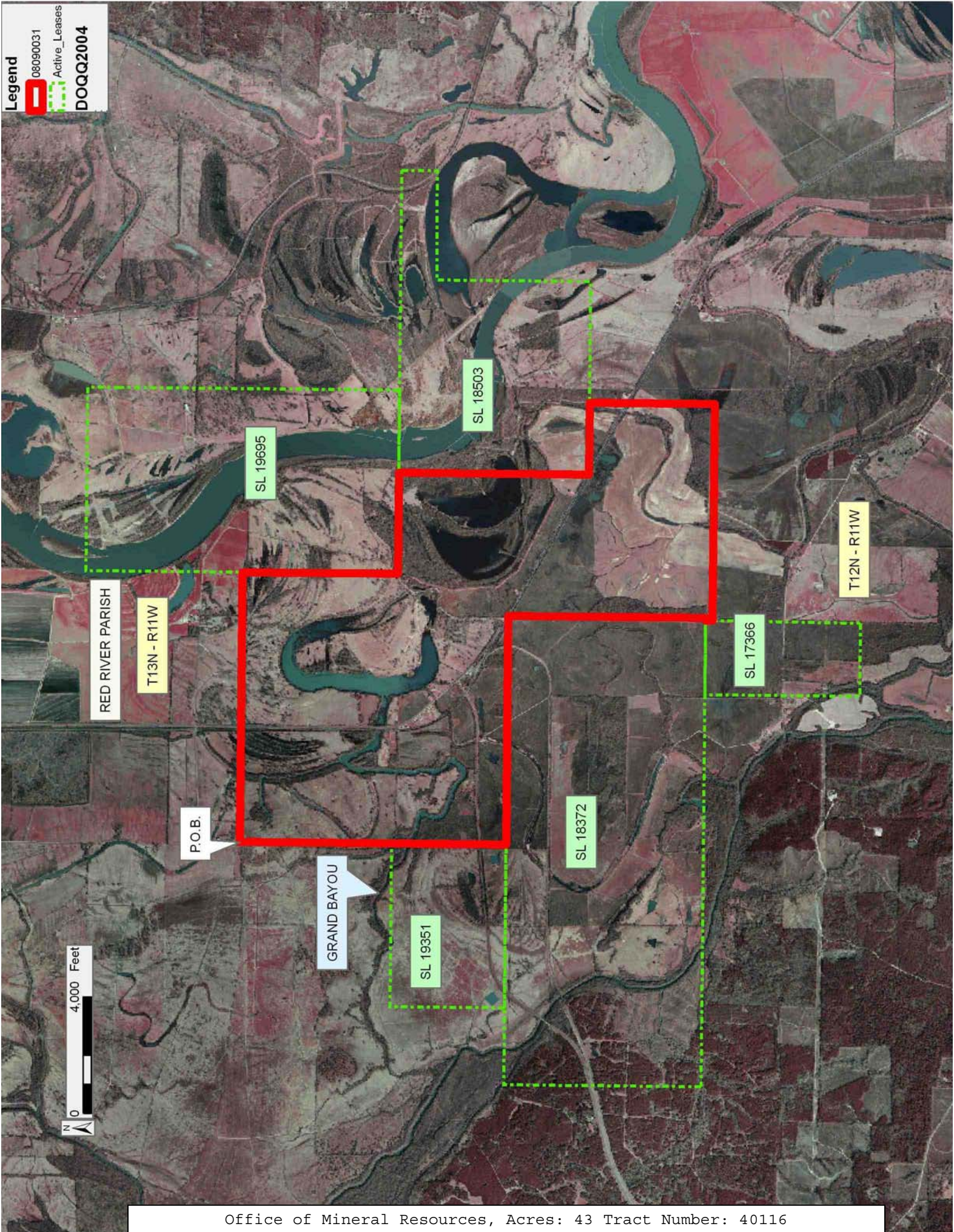
NOTE: The above description of the Tract nominated for lease has been provided and corrected, where required, exclusively by the nomination party. Any mineral lease selected from this Tract and awarded by the Louisiana State Mineral Board shall be without warranty of any kind, either express, implied, or statutory, including, but not limited to, the implied warranties of merchantability and fitness for a particular purpose. Should the mineral lease awarded by the Louisiana State Mineral Board be subsequently modified, cancelled or abrogated due to the existence of conflicting leases, operating agreements, private claims or other future obligations or conditions which may affect all or any portion of the leased Tract, it shall not relieve the Lessee of the obligation to

pay any bonus due thereon to the Louisiana State Mineral Board, nor shall the Louisiana State Mineral Board be obligated to refund any consideration paid by the Lessor prior to such modification, cancellation, or abrogation, including, but not limited to, bonuses, rentals and royalties.

Applicant: THEOPHILUS OIL GAS & LAND SERVICES, LLC

Bidder	Cash Payment	Price/ Acre	Rental	Oil	Gas	Other

Legend
080900031
Active_Leases
DOQQ2004



TRACT 40117 - Red River Parish, Louisiana

All of the lands now or formerly constituting the beds and bottoms of all water bodies of every nature and description as to which title is vested in the State of Louisiana, together with all islands arising therein and other lands formed by accretion or by reliction, where allowed by law, excepting tax adjudicated lands, and not presently under mineral lease on September 10, 2008, situated in Red River Parish, Louisiana, and more particularly described as follows: Beginning at a point on the East boundary of State Lease No. 18606 having Coordinates of X = 1,719,190.00 and Y = 525,310.00; thence East 7,845.00 feet to a point having Coordinates of X = 1,727,035.00 and Y = 525,310.00; thence South approximately 17,169 feet to a point on the North boundary of Operating Agreement AO 0158 having a Coordinate of X = 1,727,035.00; thence along the boundary of said Operating Agreement AO 0158 the following: Westerly approximately 4,143 feet; Northerly approximately 1,014 feet and Westerly approximately 3,575 feet to its Westernmost Northwest corner; thence Westerly approximately 11,123 feet to a point having Coordinates of X = 1,708,190.00 and Y = 509,163.70; thence North 4,290.73 feet to a point on the South boundary of State Lease No. 18503 having Coordinates of X = 1,708,190.00 and Y = 513,454.43; thence East 4,156.69 feet along the South boundary of said State Lease No. 18503 to its Southernmost Southeast corner having Coordinates of X = 1,712,346.69 and Y = 513,454.43; thence East 6,600.00 feet to a point having Coordinates of X = 1,718,946.69 and Y = 513,454.43; thence North 00 degrees 35 minutes 52 seconds East 5,317.06 feet to a point on the South boundary of said State Lease No. 18606 having Coordinates of X = 1,719,002.16 and Y = 518,771.20; thence along the boundary of said State Lease No. 18606 the following courses: East 187.84 feet to a corner having Coordinates of X = 1,719,190.00 and Y = 518,771.20 and North 6,538.80 feet to the point of beginning, **LESS AND EXCEPT** all that portion of Operating Agreement AO 242 which lies within the above described tract, **ALSO LESS AND EXCEPT** that portion, if any, of Operating Agreement AO 0158 which may lie within the above described tract, containing approximately **127 acres**, all as more particularly outlined on a plat on file in the Office of Mineral Resources, Department of Natural Resources. All bearings, distances and coordinates are based on Louisiana Coordinate System of 1927, (North or South Zone), where applicable.

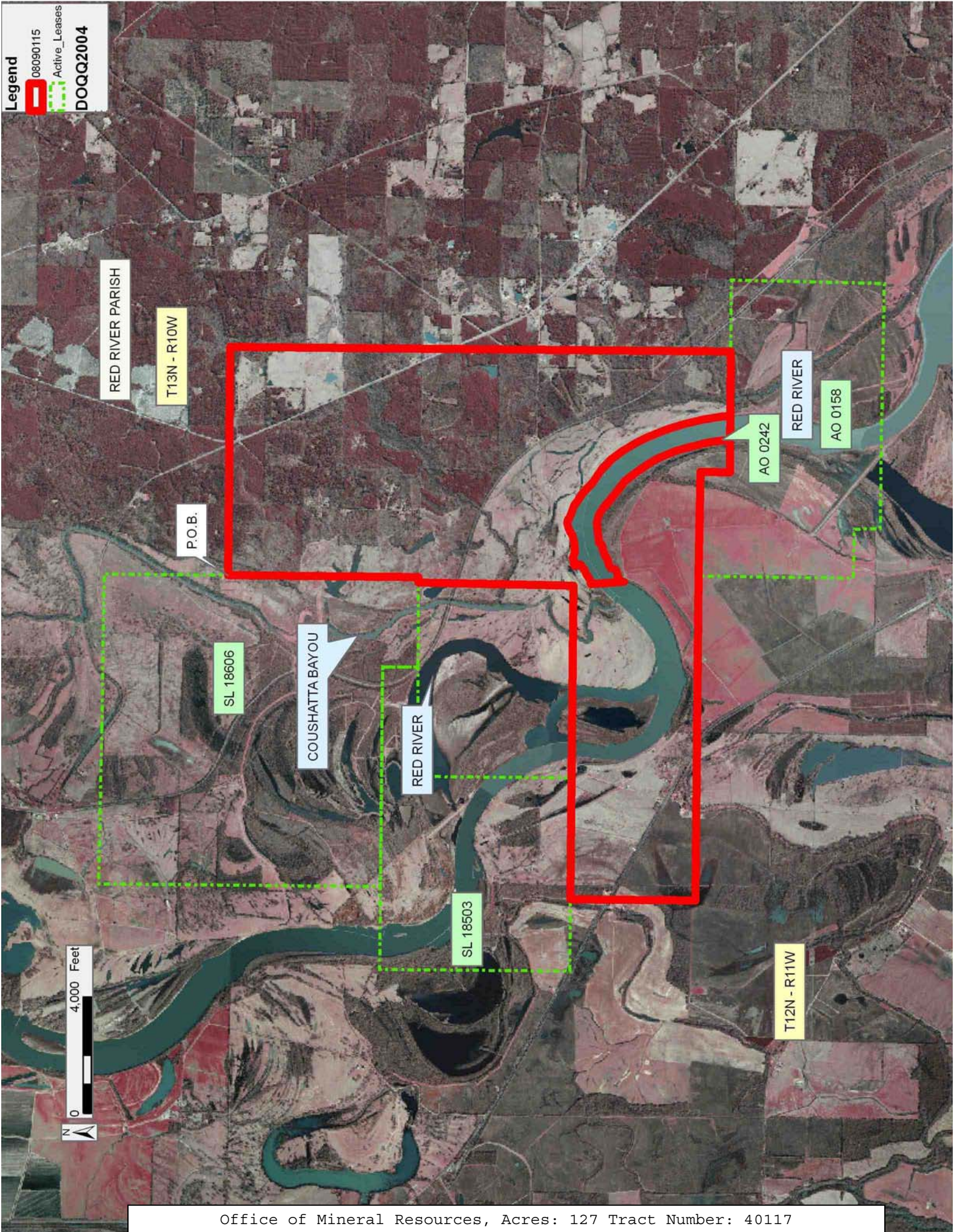
NOTE: The above description of the Tract nominated for lease has been provided and corrected, where required, exclusively by the nomination party. Any mineral lease selected from this Tract and awarded by the Louisiana State Mineral Board shall be without warranty of any kind, either express, implied, or statutory, including, but not limited to, the implied warranties of merchantability and fitness for a particular purpose. Should the mineral lease awarded by the Louisiana State Mineral Board be subsequently modified, cancelled or abrogated due to the existence of conflicting leases, operating agreements, private claims or other future obligations or conditions which may affect all or any portion of the leased Tract, it shall not relieve the Lessee of the obligation to pay any bonus due thereon to the Louisiana State Mineral Board, nor shall

the Louisiana State Mineral Board be obligated to refund any consideration paid by the Lessor prior to such modification, cancellation, or abrogation, including, but not limited to, bonuses, rentals and royalties.

Applicant: THEOPHILUS OIL, GAS & LAND SERVICES, LLC

Bidder	Cash Payment	Price/ Acre	Rental	Oil	Gas	Other

Legend
08090115
Active_Leases
DOQQ2004



TRACT 40118 - De Soto and Red River Parishes, Louisiana

All of the lands now or formerly constituting the beds and bottoms of all water bodies of every nature and description as to which title is vested in the State of Louisiana, together with all islands arising therein and other lands formed by accretion or by reliction, where allowed by law, excepting tax adjudicated lands, and not presently under mineral lease on September 10, 2008, situated in De Soto and Red River Parishes, Louisiana, and more particularly described as follows: Beginning at a point having Coordinates of X = 1,677,515.00 and Y = 525,310.00; thence East 15,485.00 feet to a point having Coordinates of X = 1,693,000.00 and Y = 525,310.00; thence South 5,210.00 feet to the Northeast corner of State Lease No. 19351 having Coordinates of X = 1,693,000.00 and Y = 520,100.00; thence West 5,600.00 feet along the North boundary of State Lease No. 19351 to its Northwest corner, also being the Northeast corner of State Lease No. 19350 having Coordinates of X = 1,687,400.00 and Y = 520,100.00; thence along the boundary of said State Lease No. 19350 the following courses: West 5,600.00 feet to a corner having Coordinates of X = 1,681,800.00 and Y = 520,100.00; South 5,600.00 feet to a corner having Coordinates of X = 1,681,800.00 and Y = 514,500.00 and East 2,960.00 feet to its Southernmost Southeast corner located on the West boundary of State Lease No. 18372 having Coordinates of X = 1,684,760.00 and Y = 514,500.00; thence South 5,100.00 feet along the West boundary of said State Lease No. 18372 to its Southwest corner having Coordinates of X = 1,684,760.00 and Y = 509,400.00; thence West 7,245.00 feet to a point having Coordinates of X = 1,677,515.00 and Y = 509,400.00; thence North 15,910.00 feet to the point of beginning, (This tract includes only waterbottoms claimed and owned by the state and specifically excludes any land which the state may claim or own and to which the mineral rights are vested in the state), containing approximately **23 acres**, all as more particularly outlined on a plat on file in the Office of Mineral Resources, Department of Natural Resources. All bearings, distances and coordinates are based on Louisiana Coordinate System of 1927, (North or South Zone), where applicable.

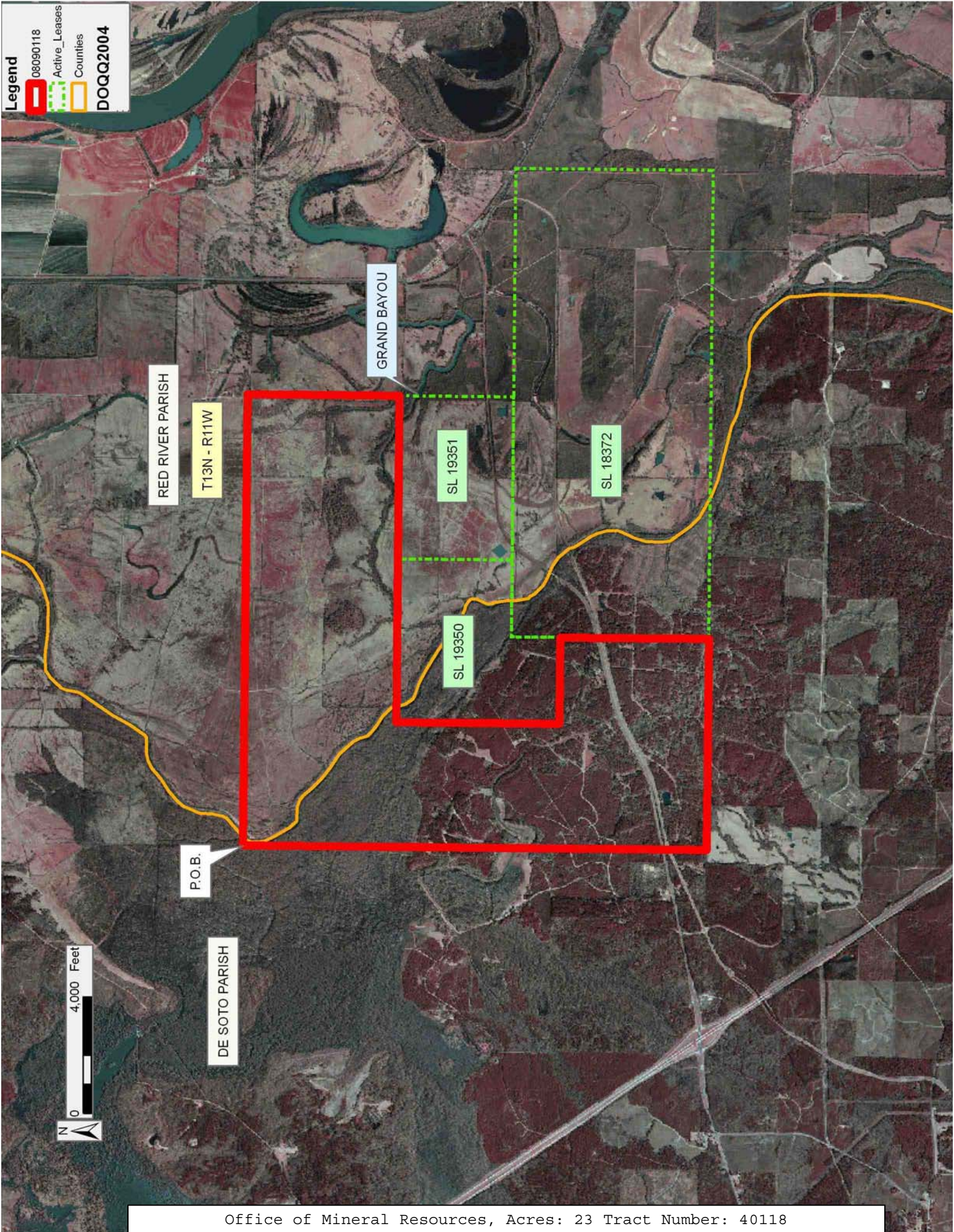
NOTE: The above description of the Tract nominated for lease has been provided and corrected, where required, exclusively by the nomination party. Any mineral lease selected from this Tract and awarded by the Louisiana State Mineral Board shall be without warranty of any kind, either express, implied, or statutory, including, but not limited to, the implied warranties of merchantability and fitness for a particular purpose. Should the mineral lease awarded by the Louisiana State Mineral Board be subsequently modified, cancelled or abrogated due to the existence of conflicting leases, operating agreements, private claims or other future obligations or conditions which may affect all or any portion of the leased Tract, it shall not relieve the Lessee of the obligation to pay any bonus due thereon to the Louisiana State Mineral Board, nor shall the Louisiana State Mineral Board be obligated to refund any consideration paid by the Lessor prior to such modification, cancellation, or abrogation, including, but not limited to, bonuses, rentals and royalties.

Applicant: THEOPHILUS OIL, GAS & LAND SERVICES, LLC

Bidder	Cash Payment	Price/ Acre	Rental	Oil	Gas	Other

Legend

- 08090118
- Active_Leases
- Counties
- DOQQ2004



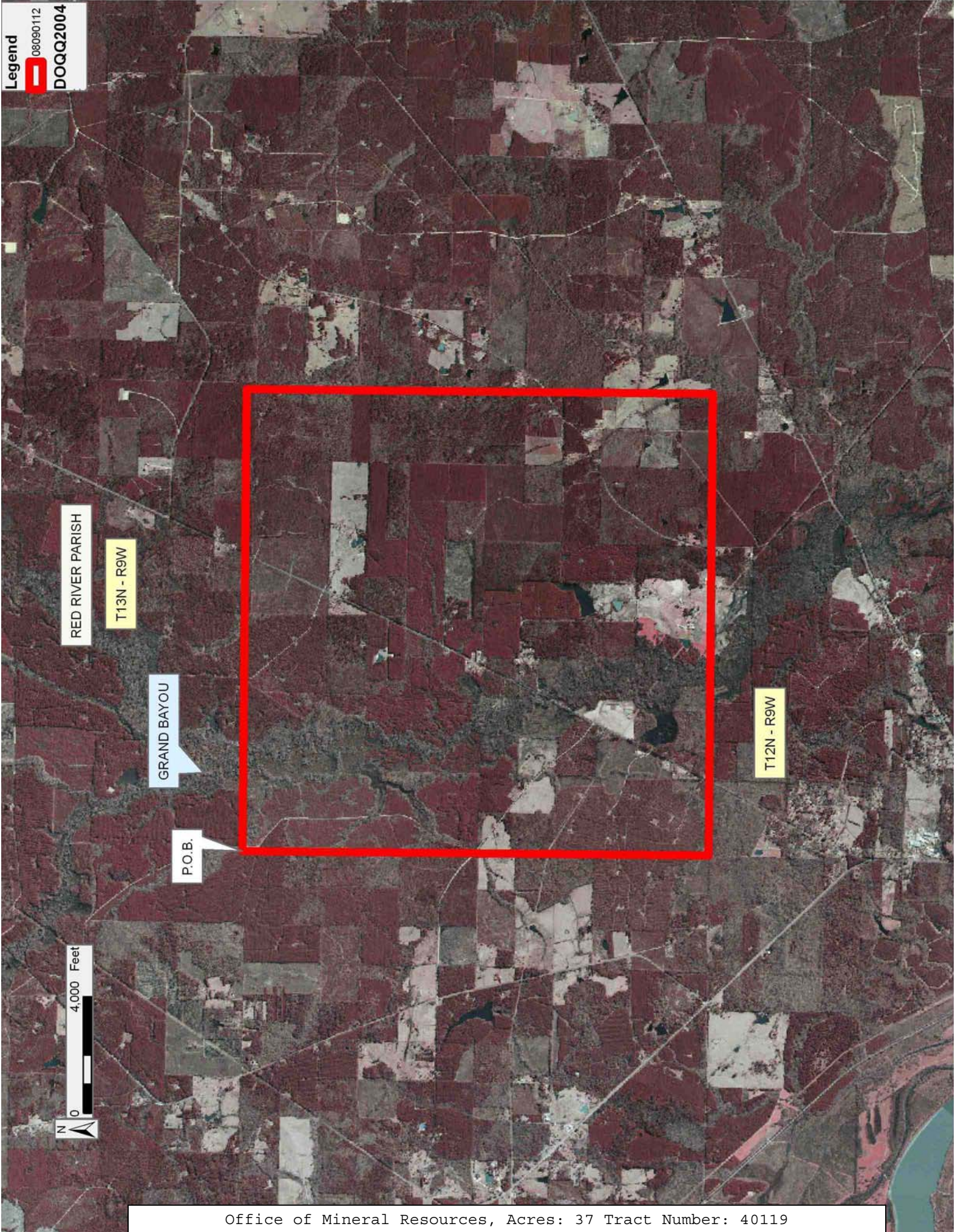
TRACT 40119 - Red River Parish, Louisiana

All of the lands now or formerly constituting the beds and bottoms of all water bodies of every nature and description as to which title is vested in the State of Louisiana, together with all islands arising therein and other lands formed by accretion or by reliction, where allowed by law, excepting tax adjudicated lands, and not presently under mineral lease on September 10, 2008, situated in Red River Parish, Louisiana, and more particularly described as follows: Beginning at a point having Coordinates of X = 1,740,020.00 and Y = 524,033.70; thence East 15,840.00 feet to a point having Coordinates of X = 1,755,860.00 and Y = 524,033.70; thence South 15,978.70 feet to a point having Coordinates of X = 1,755,860.00 and Y = 508,055.00; thence West 15,840.00 feet to a point having Coordinates of X = 1,740,020.00 and Y = 508,055.00; thence North 15,978.70 feet to the point of beginning, containing approximately **37 acres**, all as more particularly outlined on a plat on file in the Office of Mineral Resources, Department of Natural Resources. All bearings, distances and coordinates are based on Louisiana Coordinate System of 1927, (North or South Zone), where applicable.

NOTE: The above description of the Tract nominated for lease has been provided and corrected, where required, exclusively by the nomination party. Any mineral lease selected from this Tract and awarded by the Louisiana State Mineral Board shall be without warranty of any kind, either express, implied, or statutory, including, but not limited to, the implied warranties of merchantability and fitness for a particular purpose. Should the mineral lease awarded by the Louisiana State Mineral Board be subsequently modified, cancelled or abrogated due to the existence of conflicting leases, operating agreements, private claims or other future obligations or conditions which may affect all or any portion of the leased Tract, it shall not relieve the Lessee of the obligation to pay any bonus due thereon to the Louisiana State Mineral Board, nor shall the Louisiana State Mineral Board be obligated to refund any consideration paid by the Lessor prior to such modification, cancellation, or abrogation, including, but not limited to, bonuses, rentals and royalties.

Applicant: THEOPHILUS OIL, GAS & LAND SERVICES, LLC

Bidder	Cash Payment	Price/ Acre	Rental	Oil	Gas	Other



TRACT 40120 - Natchitoches and Red River Parishes, Louisiana

All of the lands now or formerly constituting the beds and bottoms of all water bodies of every nature and description as to which title is vested in the State of Louisiana, together with all islands arising therein and other lands formed by accretion or by reliction, where allowed by law, excepting tax adjudicated lands, and not presently under mineral lease on September 10, 2008, situated in Natchitoches and Red River Parishes, Louisiana, and more particularly described as follows: Beginning at a point having Coordinates of X = 1,785,960.00 and Y = 523,773.70; thence East 17,040.00 feet to a point having Coordinates of X = 1,803,000.00 and Y = 523,773.70; thence South 16,238.70 feet to a point having Coordinates of X = 1,803,000.00 and Y = 507,535.00; thence West 17,040.00 feet to a point having Coordinates of X = 1,785,960.00 and Y = 507,535.00; thence North 16,238.70 feet to the point of beginning, containing approximately **42 acres**, all as more particularly outlined on a plat on file in the Office of Mineral Resources, Department of Natural Resources. All bearings, distances and coordinates are based on Louisiana Coordinate System of 1927, (North or South Zone), where applicable.

NOTE: The above description of the Tract nominated for lease has been provided and corrected, where required, exclusively by the nomination party. Any mineral lease selected from this Tract and awarded by the Louisiana State Mineral Board shall be without warranty of any kind, either express, implied, or statutory, including, but not limited to, the implied warranties of merchantability and fitness for a particular purpose. Should the mineral lease awarded by the Louisiana State Mineral Board be subsequently modified, cancelled or abrogated due to the existence of conflicting leases, operating agreements, private claims or other future obligations or conditions which may affect all or any portion of the leased Tract, it shall not relieve the Lessee of the obligation to pay any bonus due thereon to the Louisiana State Mineral Board, nor shall the Louisiana State Mineral Board be obligated to refund any consideration paid by the Lessor prior to such modification, cancellation, or abrogation, including, but not limited to, bonuses, rentals and royalties.

NOTE: The above Tract is located upon a restricted scenic river and all operations in this area must be conducted in strict conformity with the regulations of the Corps of Engineers, U.S. Army.

Applicant: THEOPHILUS OIL, GAS & LAND SERVICES, LLC

Bidder	Cash Payment	Price/ Acre	Rental	Oil	Gas	Other

Legend
08090110
Counties
DOQQ2004

NATCHITOCHES PARISH

T13N - R7W

BLACK LAKE BAYOU

RED RIVER PARISH

T13N - R8W

P.O.B.

T12N - R8W



TRACT 40121 - De Soto and Red River Parishes, Louisiana

All of the lands now or formerly constituting the beds and bottoms of all water bodies of every nature and description as to which title is vested in the State of Louisiana, together with all islands arising therein and other lands formed by accretion or by reliction, where allowed by law, excepting tax adjudicated lands, and not presently under mineral lease on September 10, 2008, situated in De Soto and Red River Parishes, Louisiana, and more particularly described as follows: Beginning at a point on the East boundary of State Lease No. 17366, as amended having Coordinates of X = 1,700,747.94 and Y = 509,163.70; thence East 7,442.06 feet to a point having Coordinates of X = 1,708,190.00 and Y = 509,163.70; thence South 15,863.70 feet to a point having Coordinates of X = 1,708,190.00 and Y = 493,300.00; thence West 15,875.00 feet to a point having Coordinates of X = 1,692,315.00 and Y = 493,300.00; thence North 10,787.00 feet to a point on the South boundary of State Lease No. 17128, as amended having Coordinates of X = 1,692,315.00 and Y = 504,087.00; thence East 5,885.00 feet along the South boundary of said State Lease No. 17128 to its Southeast corner, also being the Southwest corner of said State Lease No. 17366 having Coordinates of X = 1,698,200.00 and Y = 504,087.00; thence along the South and East boundary of said State Lease No. 17366 the following courses and distances: East 2,503.63 feet to a corner having Coordinates of X = 1,700,703.63 and Y = 504,087.00 and North 00 degrees 30 minutes 00 seconds East 5,076.89 feet to the point of beginning, containing approximately **36 acres**, all as more particularly outlined on a plat on file in the Office of Mineral Resources, Department of Natural Resources. All bearings, distances and coordinates are based on Louisiana Coordinate System of 1927, (North or South Zone), where applicable.

NOTE: The above description of the Tract nominated for lease has been provided and corrected, where required, exclusively by the nomination party. Any mineral lease selected from this Tract and awarded by the Louisiana State Mineral Board shall be without warranty of any kind, either express, implied, or statutory, including, but not limited to, the implied warranties of merchantability and fitness for a particular purpose. Should the mineral lease awarded by the Louisiana State Mineral Board be subsequently modified, cancelled or abrogated due to the existence of conflicting leases, operating agreements, private claims or other future obligations or conditions which may affect all or any portion of the leased Tract, it shall not relieve the Lessee of the obligation to pay any bonus due thereon to the Louisiana State Mineral Board, nor shall the Louisiana State Mineral Board be obligated to refund any consideration paid by the Lessor prior to such modification, cancellation, or abrogation, including, but not limited to, bonuses, rentals and royalties.

Applicant: THEOPHILUS OIL GAS & LAND SERVICES, LLC

Bidder	Cash Payment	Price/ Acre	Rental	Oil	Gas	Other

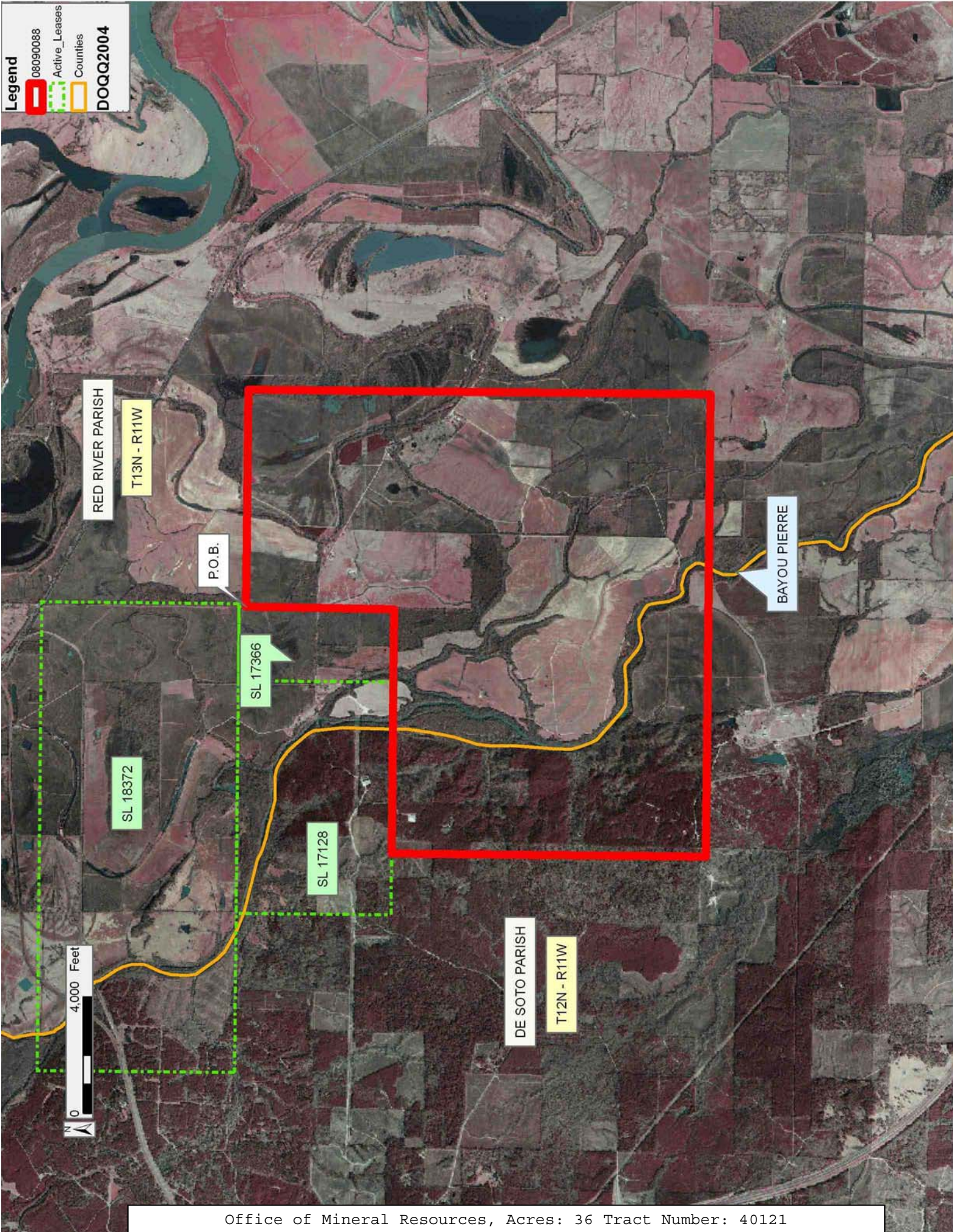
Legend

080900088

Active_Leases

Counties

DOQQ2004



TRACT 40122 - Red River Parish, Louisiana

All of the lands now or formerly constituting the beds and bottoms of all water bodies of every nature and description as to which title is vested in the State of Louisiana, together with all islands arising therein and other lands formed by accretion or by reliction, where allowed by law, excepting tax adjudicated lands, and not presently under mineral lease on September 10, 2008, situated in Red River Parish, Louisiana, and more particularly described as follows: Beginning at a point having Coordinates of X = 1,708,190.00 and Y = 509,163.70; thence Easterly approximately 11,123 feet to the Northwest corner of Operating Agreement AO 0158; thence along the boundary of said Operating Agreement AO 0158 the following: Southerly approximately 5,312 feet; Easterly approximately 1,682 feet; Southerly approximately 889 feet and Easterly approximately 3,081 feet to a point of intersection with the West boundary of State Lease No. 13045; thence Southerly approximately 5,255 feet along the West boundary of said State Lease No. 13045 to its Southwest corner; thence Southerly approximately 4,387 feet to a point having Coordinates of X = 1,724,065.00 and Y = 493,300.00; thence West 15,875.00 feet to a point having Coordinates of X = 1,708,190.00 and Y = 493,300.00; thence North 15,863.70 feet to the point of beginning, **LESS AND EXCEPT** that portion of State Lease No. 6060, as amended, which lies within the above described tract, **ALSO LESS AND EXCEPT** that portion, if any, of State Lease No. 13045 and Operating Agreement AO 0158 which may lie within the above described tract, containing approximately **161 acres**, all as more particularly outlined on a plat on file in the Office of Mineral Resources, Department of Natural Resources. All bearings, distances and coordinates are based on Louisiana Coordinate System of 1927, (North or South Zone), where applicable.

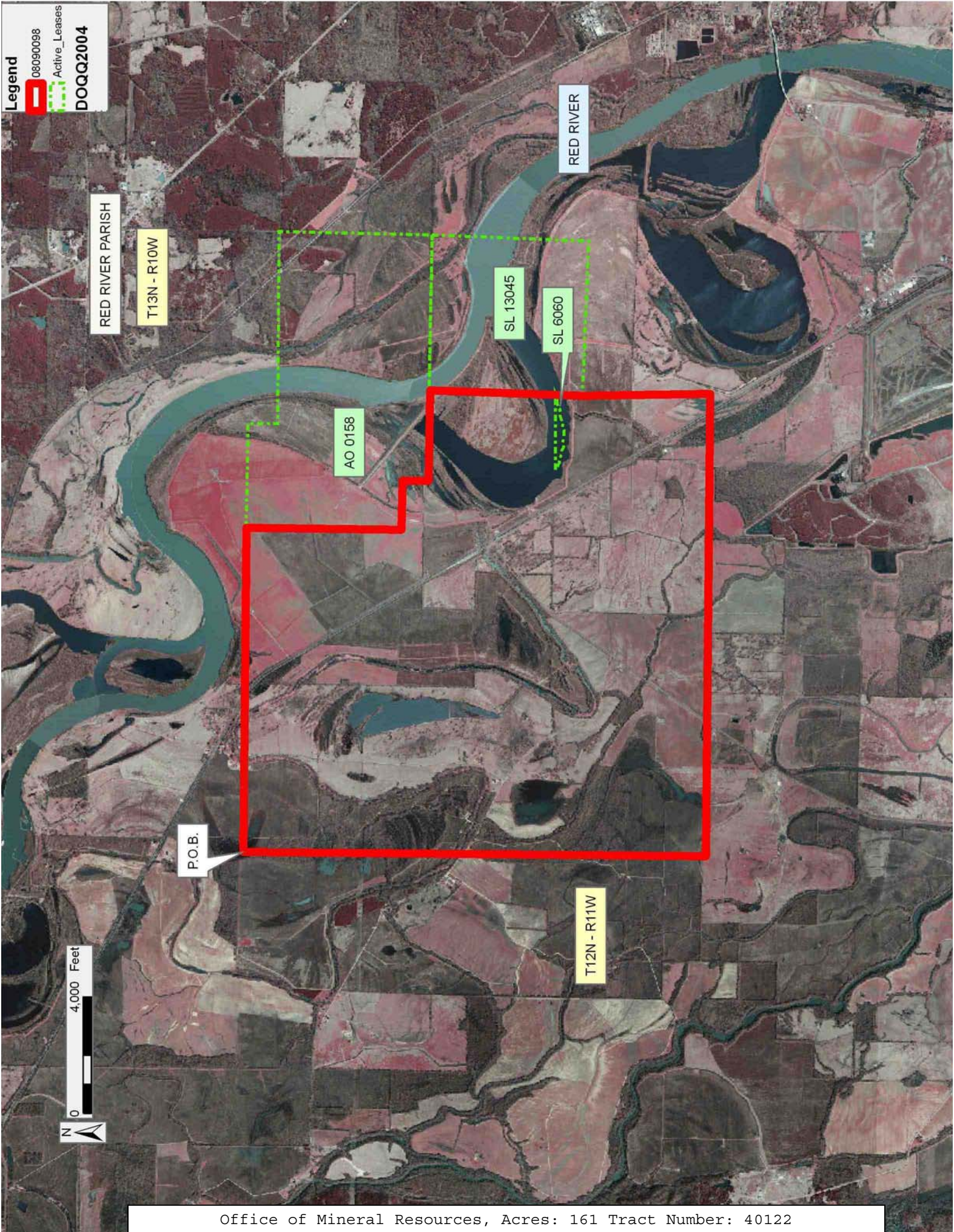
NOTE: The above description of the Tract nominated for lease has been provided and corrected, where required, exclusively by the nomination party. Any mineral lease selected from this Tract and awarded by the Louisiana State Mineral Board shall be without warranty of any kind, either express, implied, or statutory, including, but not limited to, the implied warranties of merchantability and fitness for a particular purpose. Should the mineral lease awarded by the Louisiana State Mineral Board be subsequently modified, cancelled or abrogated due to the existence of conflicting leases, operating agreements, private claims or other future obligations or conditions which may affect all or any portion of the leased Tract, it shall not relieve the Lessee of the obligation to pay any bonus due thereon to the Louisiana State Mineral Board, nor shall the Louisiana State Mineral Board be obligated to refund any consideration paid by the Lessor prior to such modification, cancellation, or abrogation, including, but not limited to, bonuses, rentals and royalties.

Applicant: THEOPHILUS OIL GAS & LAND SERVICES, LLC

Bidder	Cash Payment	Price/ Acre	Rental	Oil	Gas	Other

Legend

080900098
Active_Leases
DOQQ2004



TRACT 40123 - Red River Parish, Louisiana

All of the lands now or formerly constituting the beds and bottoms of all water bodies of every nature and description as to which title is vested in the State of Louisiana, together with all islands arising therein and other lands formed by accretion or by reliction, where allowed by law, excepting tax adjudicated lands, and not presently under mineral lease on September 10, 2008, situated in Red River Parish, Louisiana, and more particularly described as follows: Beginning at a point having Coordinates of X = 1,739,940.00 and Y = 508,134.10; thence South 14,834.10 feet to a point having Coordinates of X = 1,739,940.00 and Y = 493,300.00; thence West 15,875.00 feet to a point having Coordinates of X = 1,724,065.00 and Y = 493,300.00; thence Northerly approximately 4,387 feet to the Southwest corner of State Lease No. 13045; thence along the boundary of said State Lease No. 13045 the following: Easterly approximately 5,316 feet to its Southeast corner and Northerly approximately 1,080 feet to a point on the South boundary of State Lease No. 13697, as amended; thence along the boundary of said State Lease No. 13697 the following: Easterly approximately 661 feet; Northerly approximately 4,322 feet and Westerly approximately 612 feet to a point on the East boundary of Operating Agreement AO 0158; thence Northerly approximately 5,218 feet along the East boundary of said Operating Agreement AO 0158 to its Easternmost Northeast corner; thence Easterly approximately 10,448 feet to the point of beginning, **LESS AND EXCEPT** that portion, if any, of State Lease No. 13697, as amended, State Lease No. 13045 and Operating Agreement AO 0158 which may lie within the above described tract, (This tract includes only waterbottoms claimed and owned by the state and specifically excludes any land which the state may claim or own and to which the mineral rights are vested in the state), tract containing approximately **195 acres**, all as more particularly outlined on a plat on file in the Office of Mineral Resources, Department of Natural Resources. All bearings, distances and coordinates are based on Louisiana Coordinate System of 1927, (North or South Zone), where applicable.

NOTE: The above description of the Tract nominated for lease has been provided and corrected, where required, exclusively by the nomination party. Any mineral lease selected from this Tract and awarded by the Louisiana State Mineral Board shall be without warranty of any kind, either express, implied, or statutory, including, but not limited to, the implied warranties of merchantability and fitness for a particular purpose. Should the mineral lease awarded by the Louisiana State Mineral Board be subsequently modified, cancelled or abrogated due to the existence of conflicting leases, operating agreements, private claims or other future obligations or conditions which may affect all or any portion of the leased Tract, it shall not relieve the Lessee of the obligation to pay any bonus due thereon to the Louisiana State Mineral Board, nor shall the Louisiana State Mineral Board be obligated to refund any consideration paid by the Lessor prior to such modification, cancellation, or abrogation, including, but not limited to, bonuses, rentals and royalties.

Applicant: THEOPHILUS OIL GAS & LAND SERVICES, LLC

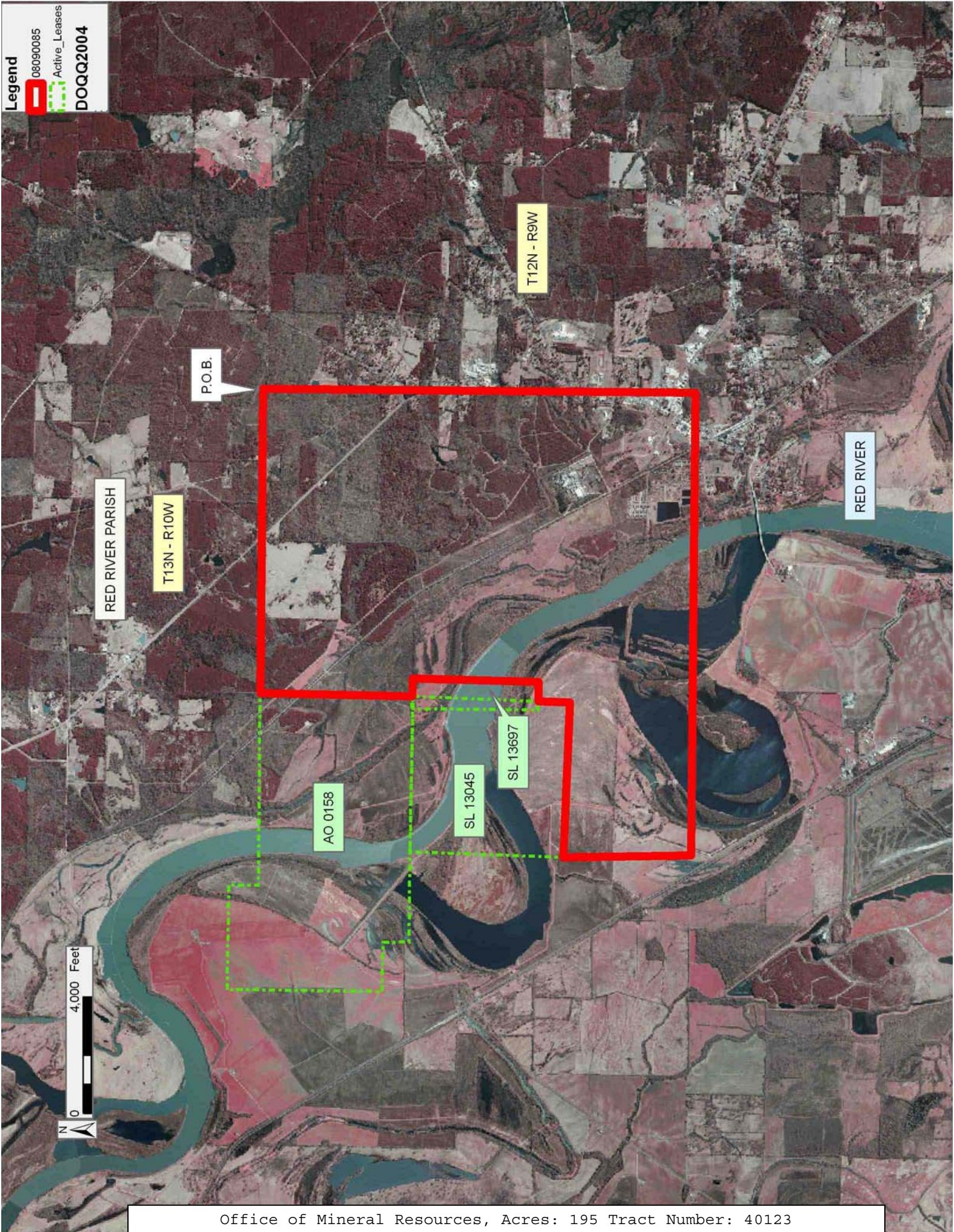
Bidder	Cash Payment	Price/ Acre	Rental	Oil	Gas	Other

Legend

08090085

Active_Leases

DOQQ2004



TRACT 40124 - Natchitoches and Red River Parishes, Louisiana

All of the lands now or formerly constituting the beds and bottoms of all water bodies of every nature and description as to which title is vested in the State of Louisiana, together with all islands arising therein and other lands formed by accretion or by reliction, where allowed by law, excepting tax adjudicated lands, and not presently under mineral lease on September 10, 2008, situated in Natchitoches and Red River Parishes, Louisiana, and more particularly described as follows: Beginning at a point having Coordinates of X = 1,787,160.00 and Y = 507,535.00; thence East 15,840.00 feet to a point having Coordinates of X = 1,803,000.00 and Y = 507,535.00; thence South 16,025.00 feet to a point having Coordinates of X = 1,803,000.00 and Y = 491,510.00; thence West 15,840.00 feet to a point having Coordinates of X = 1,787,160.00 and Y = 491,510.00; thence North 16,025.00 feet to the point of beginning, containing approximately **40 acres**, all as more particularly outlined on a plat on file in the Office of Mineral Resources, Department of Natural Resources. All bearings, distances and coordinates are based on Louisiana Coordinate System of 1927, (North or South Zone), where applicable.

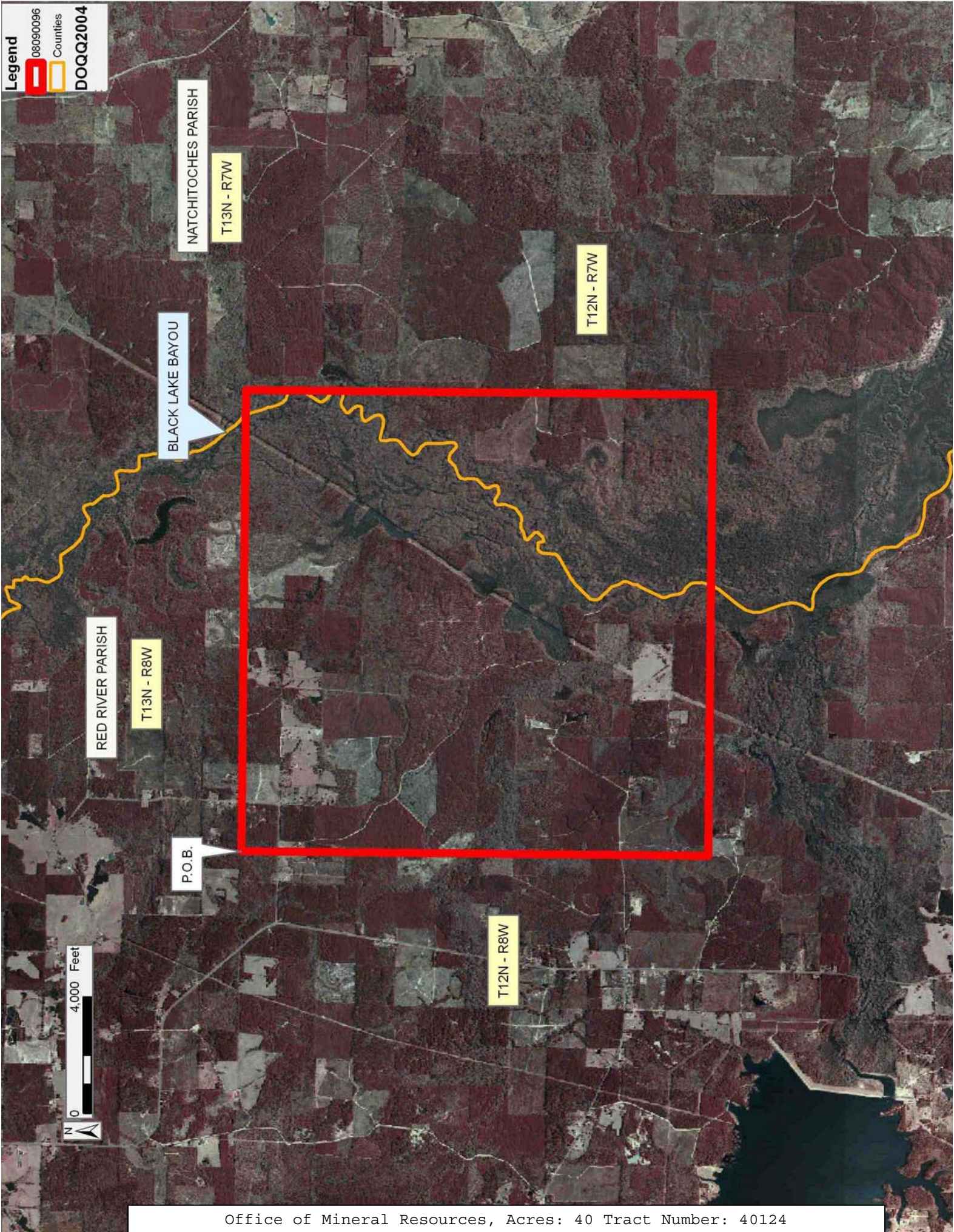
NOTE: The above description of the Tract nominated for lease has been provided and corrected, where required, exclusively by the nomination party. Any mineral lease selected from this Tract and awarded by the Louisiana State Mineral Board shall be without warranty of any kind, either express, implied, or statutory, including, but not limited to, the implied warranties of merchantability and fitness for a particular purpose. Should the mineral lease awarded by the Louisiana State Mineral Board be subsequently modified, cancelled or abrogated due to the existence of conflicting leases, operating agreements, private claims or other future obligations or conditions which may affect all or any portion of the leased Tract, it shall not relieve the Lessee of the obligation to pay any bonus due thereon to the Louisiana State Mineral Board, nor shall the Louisiana State Mineral Board be obligated to refund any consideration paid by the Lessor prior to such modification, cancellation, or abrogation, including, but not limited to, bonuses, rentals and royalties.

NOTE: The above Tract is located upon a restricted scenic river and all operations in this area must be conducted in strict conformity with the regulations of the Corps of Engineers, U.S. Army.

Applicant: THEOPHILUS OIL GAS & LAND SERVICES, LLC

Bidder	Cash Payment	Price/ Acre	Rental	Oil	Gas	Other

Legend
08090096
Counties
DOQQ2004



TRACT 40125 - De Soto and Red River Parishes, Louisiana

All of the lands now or formerly constituting the beds and bottoms of all water bodies of every nature and description as to which title is vested in the State of Louisiana, together with all islands arising therein and other lands formed by accretion or by reliction, where allowed by law, excepting tax adjudicated lands, and not presently under mineral lease on September 10, 2008, situated in De Soto and Red River Parishes, Louisiana, and more particularly described as follows: Beginning at a point having Coordinates of X = 1,692,315.00 and Y = 493,300.00; thence East 15,875.00 feet to a point having Coordinates of X = 1,708,190.00 and Y = 493,300.00; thence South 15,700.00 feet to a point on the North boundary of State Lease No. 15500 having Coordinates of X = 1,708,190.00 and Y = 477,600.00; thence along the North and West boundary of said State Lease No. 15500 the following courses and distances: West 2,590.00 feet to a point having Coordinates of X = 1,705,600.00 and Y = 477,600.00 and South 235.00 feet to a point having Coordinates of X = 1,705,600.00 and Y = 477,365.00; thence West 13,285.00 feet to a point having Coordinates of X = 1,692,315.00 and Y = 477,365.00; thence North 15,935.00 feet to the point of beginning, containing approximately **70 acres**, all as more particularly outlined on a plat on file in the Office of Mineral Resources, Department of Natural Resources. All bearings, distances and coordinates are based on Louisiana Coordinate System of 1927, (North or South Zone), where applicable.

NOTE: The above description of the Tract nominated for lease has been provided and corrected, where required, exclusively by the nomination party. Any mineral lease selected from this Tract and awarded by the Louisiana State Mineral Board shall be without warranty of any kind, either express, implied, or statutory, including, but not limited to, the implied warranties of merchantability and fitness for a particular purpose. Should the mineral lease awarded by the Louisiana State Mineral Board be subsequently modified, cancelled or abrogated due to the existence of conflicting leases, operating agreements, private claims or other future obligations or conditions which may affect all or any portion of the leased Tract, it shall not relieve the Lessee of the obligation to pay any bonus due thereon to the Louisiana State Mineral Board, nor shall the Louisiana State Mineral Board be obligated to refund any consideration paid by the Lessor prior to such modification, cancellation, or abrogation, including, but not limited to, bonuses, rentals and royalties.

Applicant: THEOPHILUS OIL GAS & LAND SERVICES, LLC

Bidder	Cash Payment	Price/ Acre	Rental	Oil	Gas	Other

Legend
080900079
Counties
DOQQ2004

RED RIVER PARISH

T12N - R11W

BAYOU PIERRE

DOLET BAYOU

P.O.B.

DE SOTO PARISH

T11N - R11W

