

TRACT 40106 - Bienville Bossier and Red River Parishes, Louisiana

All of the lands now or formerly constituting the beds and bottoms of all water bodies of every nature and description as to which title is vested in the State of Louisiana, together with all islands arising therein and other lands formed by accretion or by reliction, where allowed by law, excepting tax adjudicated lands, and not presently under mineral lease on September 10, 2008, situated in Bienville Bossier and Red River Parishes, Louisiana, and more particularly described as follows: Beginning at a point having Coordinates of X = 1,708,957.21 and Y = 572,800.00; thence East 15,751.49 feet to a point having Coordinates of X = 1,724,708.70 and Y = 572,800.00; thence South 16,786.80 feet to a point having Coordinates of X = 1,724,708.70 and Y = 556,013.20; thence West 15,751.49 feet to a point having Coordinates of X = 1,708,957.21 and Y = 556,013.20; thence North 16,786.80 feet to the point of beginning, **LESS AND EXCEPT** any portion of the Loggy Bayou Wildlife Management Area that may lie within the above described tract, (This tract includes only waterbottoms claimed and owned by the state and specifically excludes any land which the state or Wildlife and Fisheries may claim or own and to which the mineral rights are vested in them), containing approximately **116 acres**, all as more particularly outlined on a plat on file in the Office of Mineral Resources, Department of Natural Resources. All bearings, distances and coordinates are based on Louisiana Coordinate System of 1927, (North or South Zone), where applicable.

NOTE: The above description of the Tract nominated for lease has been provided and corrected, where required, exclusively by the nomination party. Any mineral lease selected from this Tract and awarded by the Louisiana State Mineral Board shall be without warranty of any kind, either express, implied, or statutory, including, but not limited to, the implied warranties of merchantability and fitness for a particular purpose. Should the mineral lease awarded by the Louisiana State Mineral Board be subsequently modified, cancelled or abrogated due to the existence of conflicting leases, operating agreements, private claims or other future obligations or conditions which may affect all or any portion of the leased Tract, it shall not relieve the Lessee of the obligation to pay any bonus due thereon to the Louisiana State Mineral Board, nor shall the Louisiana State Mineral Board be obligated to refund any consideration paid by the Lessor prior to such modification, cancellation, or abrogation, including, but not limited to, bonuses, rentals and royalties.

Bidder	Cash Payment	Price/Acre	Rental	Oil	Gas	Other

Applicant: THEOPHILUS OIL GAS & LAND SERVICES, LLC

Legend

- 08090042
- Wildlife
- Counties

DOQQ2004

BIENVILLE PARISH

T15N - R10W

RED RIVER PARISH

T14N - R10W

LOGGY BAYOU WMA

P.O.B.



TRACT 40107 - Caldwell and Richland Parishes, Louisiana

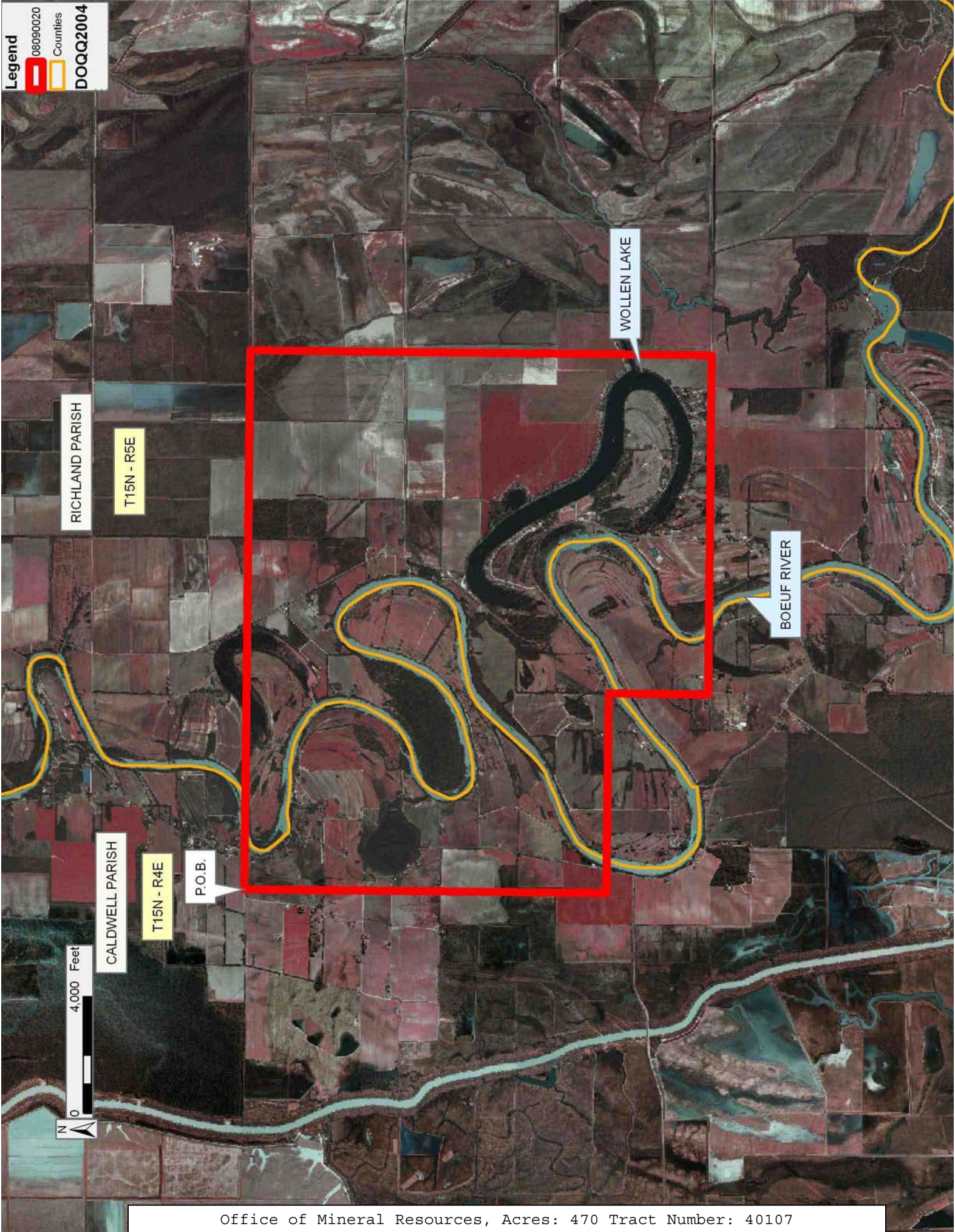
All of the lands now or formerly constituting the beds and bottoms of all water bodies of every nature and description as to which title is vested in the State of Louisiana, together with all islands arising therein and other lands formed by accretion or by reliction, where allowed by law, excepting tax adjudicated lands, and not presently under mineral lease on September 10, 2008, situated in Caldwell and Richland Parishes, Louisiana, and more particularly described as follows: Beginning at a point having Coordinates of X = 2,151,013.00 and Y = 570,036.00; thence East 18,480.00 feet to a point having Coordinates of X = 2,169,493.00 and Y = 570,036.00; thence South 15,819.00 feet to a point having Coordinates of X = 2,169,493.00 and Y = 554,217.00; thence West 11,636.00 feet to a point having Coordinates of X = 2,157,857.00 and Y = 554,217.00; thence North 3,413.00 feet to a point having Coordinates of X = 2,157,857.00 and Y = 557,630.00; thence West 6,844.00 feet to a point having Coordinates of X = 2,151,013.00 and Y = 557,630.00; thence North 12,406.00 feet to the point of beginning, containing approximately **470 acres**, all as more particularly outlined on a plat on file in the Office of Mineral Resources, Department of Natural Resources. All bearings, distances and coordinates are based on Louisiana Coordinate System of 1927, (North or South Zone), where applicable.

NOTE: The above description of the Tract nominated for lease has been provided and corrected, where required, exclusively by the nomination party. Any mineral lease selected from this Tract and awarded by the Louisiana State Mineral Board shall be without warranty of any kind, either express, implied, or statutory, including, but not limited to, the implied warranties of merchantability and fitness for a particular purpose. Should the mineral lease awarded by the Louisiana State Mineral Board be subsequently modified, cancelled or abrogated due to the existence of conflicting leases, operating agreements, private claims or other future obligations or conditions which may affect all or any portion of the leased Tract, it shall not relieve the Lessee of the obligation to pay any bonus due thereon to the Louisiana State Mineral Board, nor shall the Louisiana State Mineral Board be obligated to refund any consideration paid by the Lessor prior to such modification, cancellation, or abrogation, including, but not limited to, bonuses, rentals and royalties.

Bidder	Cash Payment	Price/Acre	Rental	Oil	Gas	Other

Applicant: MAPLE RESOURCES

Legend
08090020
Counties
DOQQ2004



TRACT 40108 - Red River Parish, Louisiana

All of the lands now or formerly constituting the beds and bottoms of all water bodies of every nature and description as to which title is vested in the State of Louisiana, together with all islands arising therein and other lands formed by accretion or by reliction, where allowed by law, excepting tax adjudicated lands, and not presently under mineral lease on September 10, 2008, situated in Red River Parish, Louisiana, and more particularly described as follows: Beginning at a point having Coordinates of X = 1,708,957.21 and Y = 556,013.20; thence East 15,751.49 feet to a point having Coordinates of X = 1,724,708.70 and Y = 556,013.20; thence South 16,000.80 feet to a point having Coordinates of X = 1,724,708.70 and Y = 540,012.40; thence West 15,751.49 feet to a point having Coordinates of X = 1,708,957.21 and Y = 540,012.40; thence North 16,000.80 feet to the point of beginning, containing approximately **104 acres**, all as more particularly outlined on a plat on file in the Office of Mineral Resources, Department of Natural Resources. All bearings, distances and coordinates are based on Louisiana Coordinate System of 1927, (North or South Zone), where applicable.

NOTE: The above description of the Tract nominated for lease has been provided and corrected, where required, exclusively by the nomination party. Any mineral lease selected from this Tract and awarded by the Louisiana State Mineral Board shall be without warranty of any kind, either express, implied, or statutory, including, but not limited to, the implied warranties of merchantability and fitness for a particular purpose. Should the mineral lease awarded by the Louisiana State Mineral Board be subsequently modified, cancelled or abrogated due to the existence of conflicting leases, operating agreements, private claims or other future obligations or conditions which may affect all or any portion of the leased Tract, it shall not relieve the Lessee of the obligation to pay any bonus due thereon to the Louisiana State Mineral Board, nor shall the Louisiana State Mineral Board be obligated to refund any consideration paid by the Lessor prior to such modification, cancellation, or abrogation, including, but not limited to, bonuses, rentals and royalties.

Applicant: THEOPHILUS OIL GAS & LAND SERVICES, LLC

Bidder	Cash Payment	Price/Acre	Rental	Oil	Gas	Other

RED RIVER PARISH

T14N - R10W

COUSHATTA BAYOU

LOGGY BAYOU

P.O.B.

RED RIVER

T13N - R10W



TRACT 40109 - Bienville and Red River Parishes, Louisiana

All of the lands now or formerly constituting the beds and bottoms of all water bodies of every nature and description as to which title is vested in the State of Louisiana, together with all islands arising therein and other lands formed by accretion or by reliction, where allowed by law, excepting tax adjudicated lands, and not presently under mineral lease on September 10, 2008, situated in Bienville and Red River Parishes, Louisiana, and more particularly described as follows: Beginning at a point having Coordinates of X = 1,771,810.20 and Y = 555,653.40; thence East 15,700.00 feet to a point having Coordinates of X = 1,787,510.20 and Y = 555,653.40; thence South 15,641.00 feet to a point having Coordinates of X = 1,787,510.20 and Y = 540,012.40; thence West 15,700.00 feet to a point having Coordinates of X = 1,771,810.20 and Y = 540,012.40; thence North 15,641.00 feet to the point of beginning, containing approximately **36 acres**, all as more particularly outlined on a plat on file in the Office of Mineral Resources, Department of Natural Resources. All bearings, distances and coordinates are based on Louisiana Coordinate System of 1927, (North or South Zone), where applicable.

NOTE: The above description of the Tract nominated for lease has been provided and corrected, where required, exclusively by the nomination party. Any mineral lease selected from this Tract and awarded by the Louisiana State Mineral Board shall be without warranty of any kind, either express, implied, or statutory, including, but not limited to, the implied warranties of merchantability and fitness for a particular purpose. Should the mineral lease awarded by the Louisiana State Mineral Board be subsequently modified, cancelled or abrogated due to the existence of conflicting leases, operating agreements, private claims or other future obligations or conditions which may affect all or any portion of the leased Tract, it shall not relieve the Lessee of the obligation to pay any bonus due thereon to the Louisiana State Mineral Board, nor shall the Louisiana State Mineral Board be obligated to refund any consideration paid by the Lessor prior to such modification, cancellation, or abrogation, including, but not limited to, bonuses, rentals and royalties.

NOTE: The above Tract is located upon a restricted scenic river and all operations in this area must be conducted in strict conformity with the regulations of the Corps of Engineers, U.S. Army.

Applicant: THEOPHILUS OIL GAS & LAND SERVICES, LLC

Bidder	Cash Payment	Price/Acre	Rental	Oil	Gas	Other

Legend
08090043
Counties
DOQQ2004

BIENVILLE PARISH

T14N - R8W

BLACK LAKE BAYOU



P.O.B.

0 4,000 Feet

RED RIVER PARISH

T14N - R9W

TRACT 40110 - Red River Parish, Louisiana

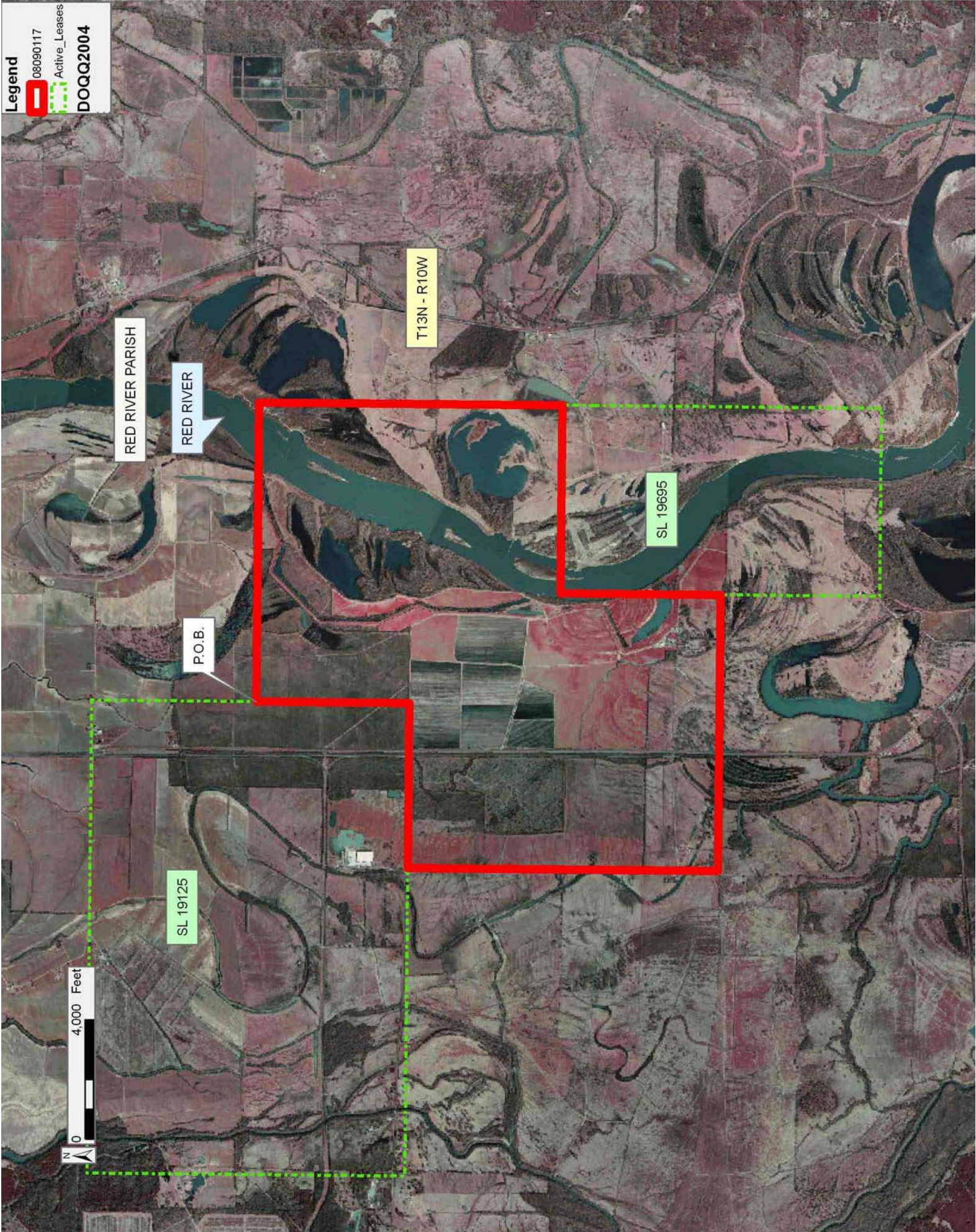
All of the lands now or formerly constituting the beds and bottoms of all water bodies of every nature and description as to which title is vested in the State of Louisiana, together with all islands arising therein and other lands formed by accretion or by reliction, where allowed by law, excepting tax adjudicated lands, and not presently under mineral lease on September 10, 2008, situated in Red River Parish, Louisiana, and more particularly described as follows: Beginning at a point on the East boundary of State Lease No. 19125 having Coordinates of X = 1,698,526.00 and Y = 540,842.00; thence East 10,029.00 feet to a point having Coordinates of X = 1,708,555.00 and Y = 540,842.00; thence South 10,166.86 feet to the Northeast corner of State Lease No. 19695 having Coordinates of X = 1,708,555.00 and Y = 530,675.14; thence along the boundary of said State Lease No. 19695 the following courses: West 6,300.00 feet to a point having Coordinates of X = 1,702,255.00 and Y = 530,675.14 and South 5,365.14 feet to a point having Coordinates of X = 1,702,255.00 and Y = 525,310.00; thence West 9,255.00 feet to a point having Coordinates of X = 1,693,000.00 and Y = 525,310.00; thence North 10,392.00 feet to a point on the South boundary of said State Lease No. 19125 having Coordinates of X = 1,693,000.00 and Y = 535,702.00; thence along the boundary of said State Lease No. 19125 the following courses: East 5,526.00 feet to a corner having Coordinates of X = 1,698,526.00 and Y = 535,702.00 and North 5,140.00 feet to the point of beginning, containing approximately **353 acres**, all as more particularly outlined on a plat on file in the Office of Mineral Resources, Department of Natural Resources. All bearings, distances and coordinates are based on Louisiana Coordinate System of 1927, (North or South Zone), where applicable.

NOTE: The above description of the Tract nominated for lease has been provided and corrected, where required, exclusively by the nomination party. Any mineral lease selected from this Tract and awarded by the Louisiana State Mineral Board shall be without warranty of any kind, either express, implied, or statutory, including, but not limited to, the implied warranties of merchantability and fitness for a particular purpose. Should the mineral lease awarded by the Louisiana State Mineral Board be subsequently modified, cancelled or abrogated due to the existence of conflicting leases, operating agreements, private claims or other future obligations or conditions which may affect all or any portion of the leased Tract, it shall not relieve the Lessee of the obligation to pay any bonus due thereon to the Louisiana State Mineral Board, nor shall the Louisiana State Mineral Board be obligated to refund any consideration paid by the Lessor prior to such modification, cancellation, or abrogation, including, but not limited to, bonuses, rentals and royalties.

Applicant: THEOPHILUS OIL, GAS & LAND SERVICES, LLC

Bidder	Cash Payment	Price/Acre	Rental	Oil	Gas	Other

Legend
08090117
Active_Leases
DOQQ2004



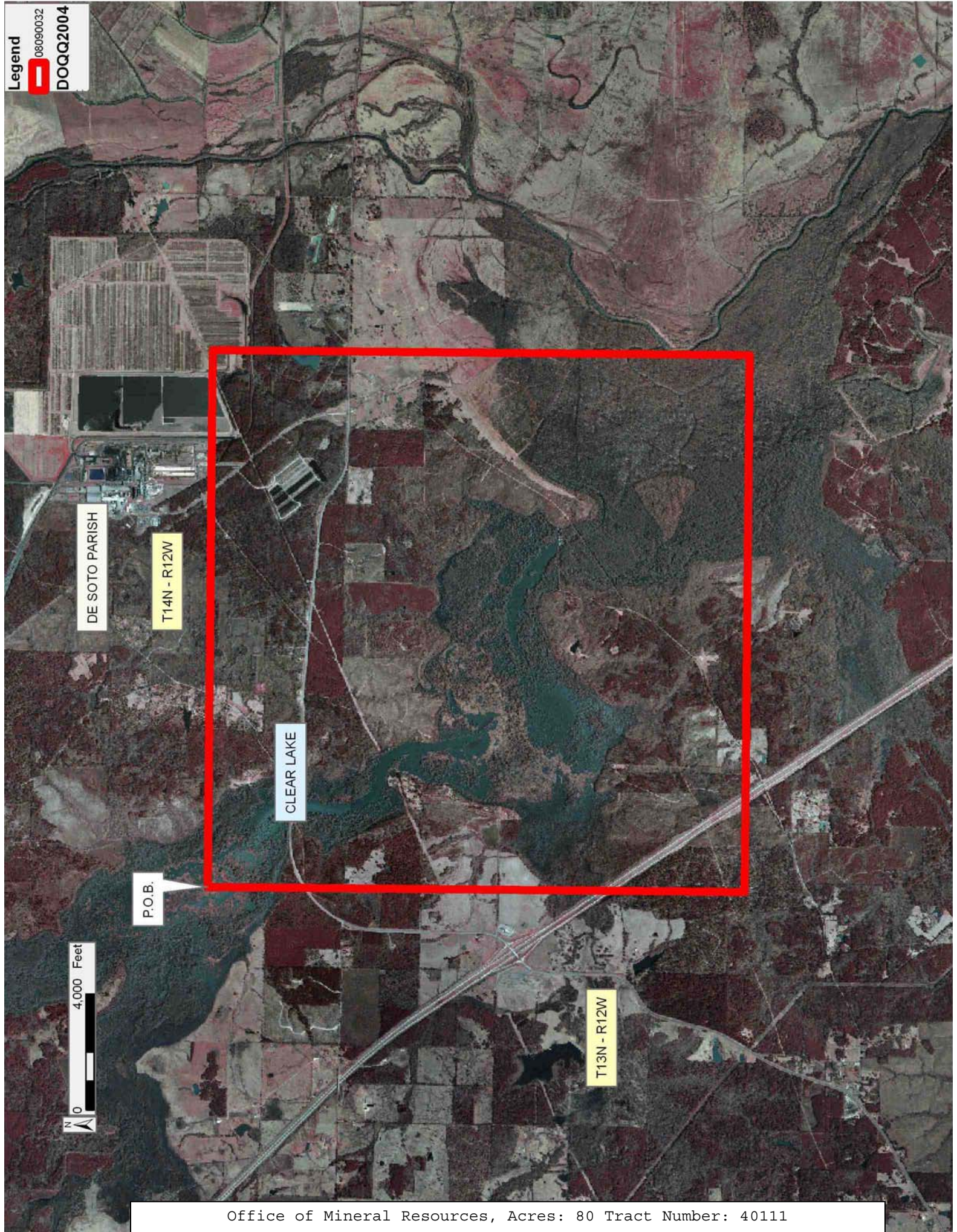
TRACT 40111 - De Soto Parish, Louisiana

All of the lands now or formerly constituting the beds and bottoms of all water bodies of every nature and description as to which title is vested in the State of Louisiana, together with all islands arising therein and other lands formed by accretion or by reliction, where allowed by law, excepting tax adjudicated lands, and not presently under mineral lease on September 10, 2008, situated in De Soto Parish, Louisiana, and more particularly described as follows: Beginning at a point having Coordinates of X = 1,659,035.00 and Y = 540,842.00; thence East 18,480.00 feet to a point having Coordinates of X = 1,677,515.00 and Y = 540,842.00; thence South 18,480.00 feet to a point having Coordinates of X = 1,677,515.00 and Y = 522,362.00; thence West 18,480.00 feet to a point having Coordinates of X = 1,659,035.00 and Y = 522,362.00; thence North 18,480.00 feet to the point of beginning, (This tract includes only waterbottoms claimed and owned by the state and specifically excludes any land which the state may claim or own and to which the mineral rights are vested in the state), containing approximately **80 acres**, all as more particularly outlined on a plat on file in the Office of Mineral Resources, Department of Natural Resources. All bearings, distances and coordinates are based on Louisiana Coordinate System of 1927, (North or South Zone), where applicable.

NOTE: The above description of the Tract nominated for lease has been provided and corrected, where required, exclusively by the nomination party. Any mineral lease selected from this Tract and awarded by the Louisiana State Mineral Board shall be without warranty of any kind, either express, implied, or statutory, including, but not limited to, the implied warranties of merchantability and fitness for a particular purpose. Should the mineral lease awarded by the Louisiana State Mineral Board be subsequently modified, cancelled or abrogated due to the existence of conflicting leases, operating agreements, private claims or other future obligations or conditions which may affect all or any portion of the leased Tract, it shall not relieve the Lessee of the obligation to pay any bonus due thereon to the Louisiana State Mineral Board, nor shall the Louisiana State Mineral Board be obligated to refund any consideration paid by the Lessor prior to such modification, cancellation, or abrogation, including, but not limited to, bonuses, rentals and royalties.

Bidder	Cash Payment	Price/Acre	Rental	Oil	Gas	Other

Applicant: THEOPHILUS OIL GAS & LAND SERVICES, LLC



TRACT 40112 - De Soto and Red River Parishes, Louisiana

All of the lands now or formerly constituting the beds and bottoms of all water bodies of every nature and description as to which title is vested in the State of Louisiana, together with all islands arising therein and other lands formed by accretion or by reliction, where allowed by law, excepting tax adjudicated lands, and not presently under mineral lease on September 10, 2008, situated in De Soto and Red River Parishes, Louisiana, and more particularly described as follows: Beginning at a point having Coordinates of X = 1,677,515.00 and Y = 540,842.00; thence East 5,171.00 feet to a point on the West boundary of State Lease No. 19125 having Coordinates of X = 1,682,686.00 and Y = 540,842.00; thence along the boundary of said State Lease No. 19125 the following courses: South 5,140.00 feet to a corner having Coordinates of X = 1,682,686.00 and Y = 535,702.00 and East 10,314.00 feet to a point having Coordinates of X = 1,693,000.00 and Y = 535,702.00; thence South 10,392.00 feet to a point having Coordinates of X = 1,693,000.00 and Y = 525,310.00; thence West 15,485.00 feet to a point having Coordinates of X = 1,677,515.00 and Y = 525,310.00; thence North 15,532.00 feet to the point of beginning, containing approximately **53 acres**, all as more particularly outlined on a plat on file in the Office of Mineral Resources, Department of Natural Resources. All bearings, distances and coordinates are based on Louisiana Coordinate System of 1927, (North or South Zone), where applicable.

NOTE: The above description of the Tract nominated for lease has been provided and corrected, where required, exclusively by the nomination party. Any mineral lease selected from this Tract and awarded by the Louisiana State Mineral Board shall be without warranty of any kind, either express, implied, or statutory, including, but not limited to, the implied warranties of merchantability and fitness for a particular purpose. Should the mineral lease awarded by the Louisiana State Mineral Board be subsequently modified, cancelled or abrogated due to the existence of conflicting leases, operating agreements, private claims or other future obligations or conditions which may affect all or any portion of the leased Tract, it shall not relieve the Lessee of the obligation to pay any bonus due thereon to the Louisiana State Mineral Board, nor shall the Louisiana State Mineral Board be obligated to refund any consideration paid by the Lessor prior to such modification, cancellation, or abrogation, including, but not limited to, bonuses, rentals and royalties.

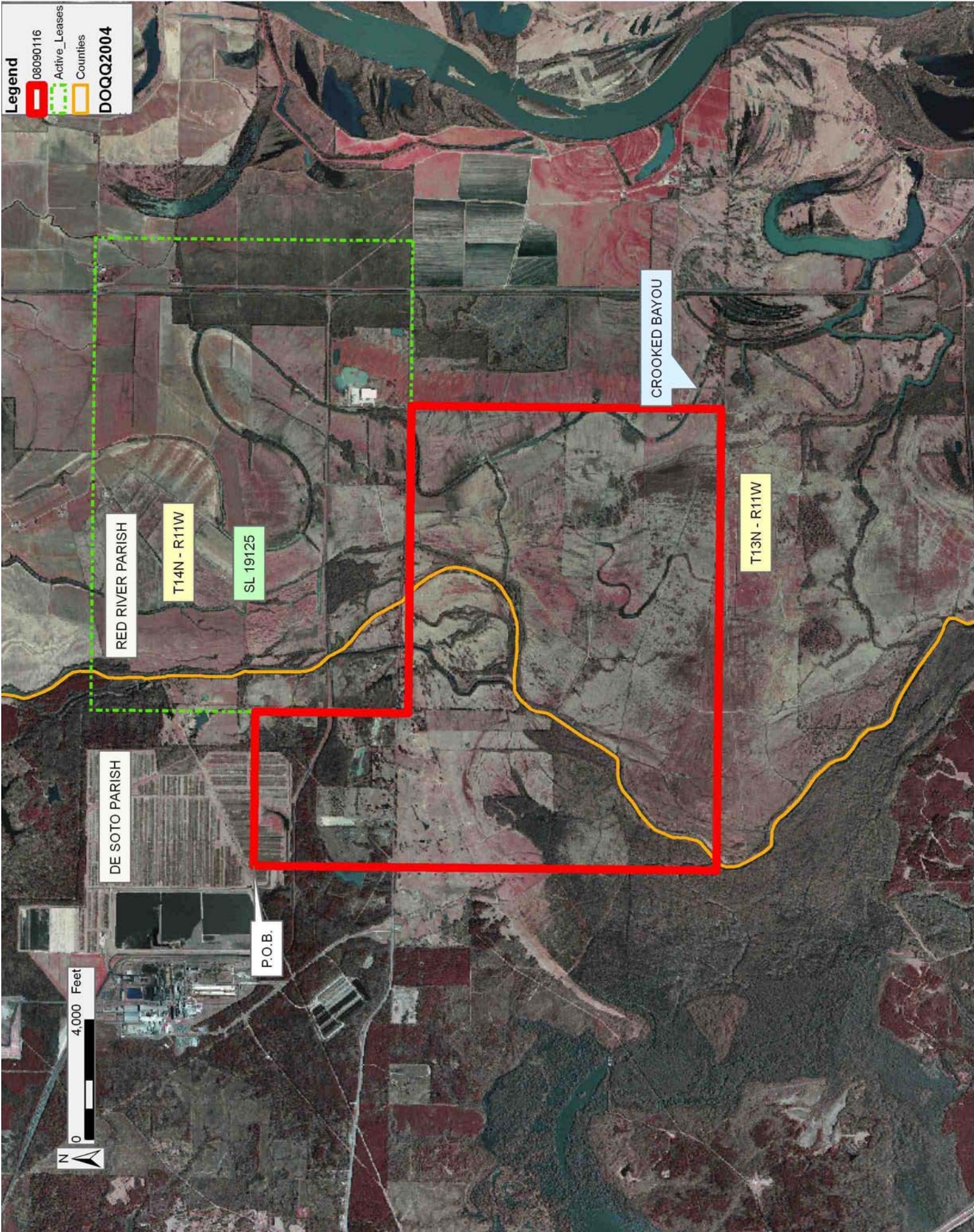
Applicant: THEOPHILUS OIL, GAS & LAND SERVICES, LLC

Bidder	Cash Payment	Price/Acre	Rental	Oil	Gas	Other

Legend

- █ 08090116
- █ Active_Leases
- █ Counties

DOQQ2004



DE SOTO PARISH

RED RIVER PARISH

T14N - R11W

SL 19125

CROOKED BAYOU

T13N - R11W

P.O.B.

TRACT 40113 - Bienville Natchitoches and Red River Parishes, Louisiana

All of the lands now or formerly constituting the beds and bottoms of all water bodies of every nature and description as to which title is vested in the State of Louisiana, together with all islands arising therein and other lands formed by accretion or by reliction, where allowed by law, excepting tax adjudicated lands, and not presently under mineral lease on September 10, 2008, situated in Bienville Natchitoches and Red River Parishes, Louisiana, and more particularly described as follows: Beginning at a point having Coordinates of X = 1,785,960.00 and Y = 540,012.40; thence East 17,040.00 feet to a point having Coordinates of X = 1,803,000.00 and Y = 540,012.40; thence South 16,238.70 feet to a point having Coordinates of X = 1,803,000.00 and Y = 523,773.70; thence West 17,040.00 feet to a point having Coordinates of X = 1,785,960.00 and Y = 523,773.70; thence North 16,238.70 feet to the point of beginning, containing approximately **36 acres**, all as more particularly outlined on a plat on file in the Office of Mineral Resources, Department of Natural Resources. All bearings, distances and coordinates are based on Louisiana Coordinate System of 1927, (North or South Zone), where applicable.

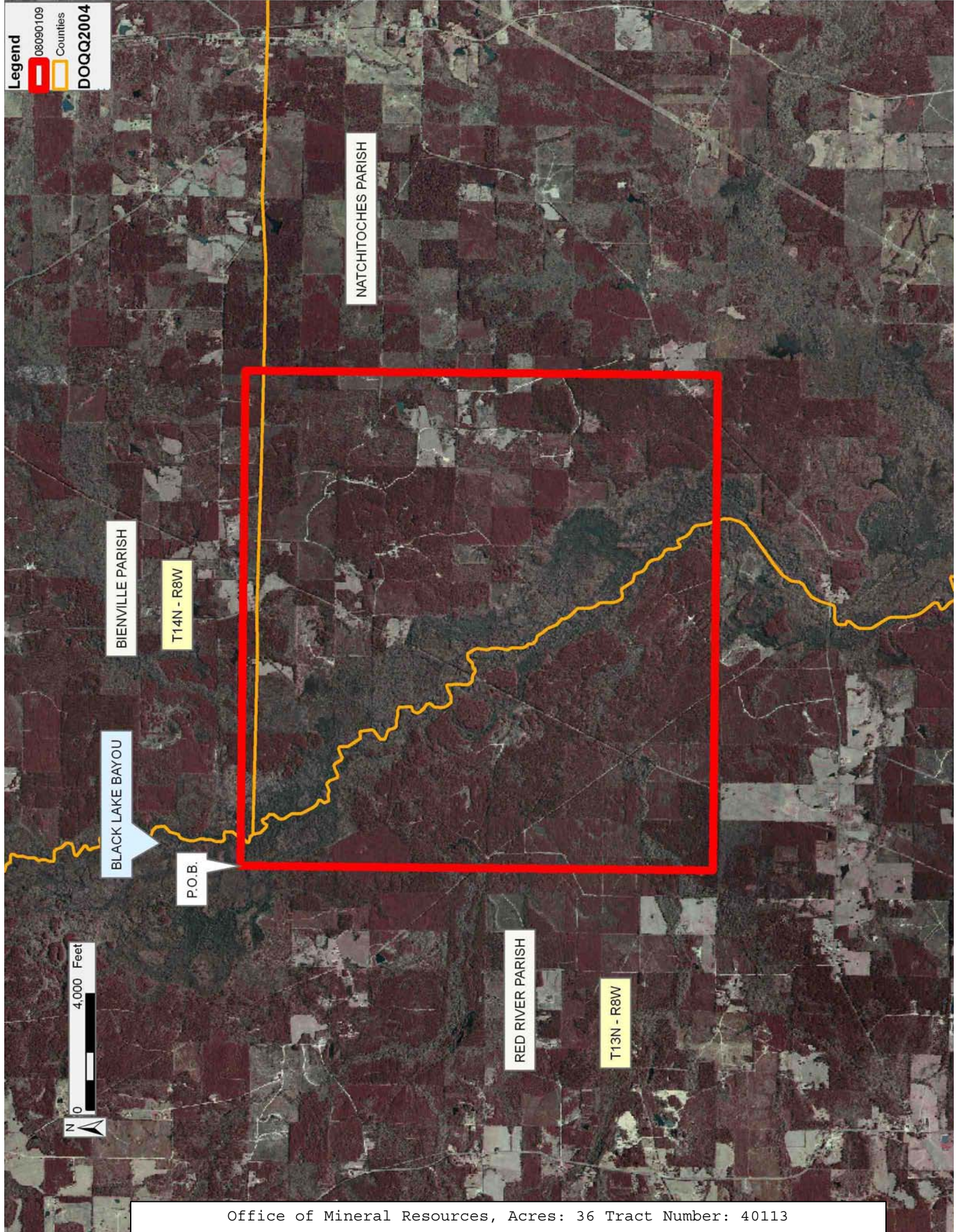
NOTE: The above description of the Tract nominated for lease has been provided and corrected, where required, exclusively by the nomination party. Any mineral lease selected from this Tract and awarded by the Louisiana State Mineral Board shall be without warranty of any kind, either express, implied, or statutory, including, but not limited to, the implied warranties of merchantability and fitness for a particular purpose. Should the mineral lease awarded by the Louisiana State Mineral Board be subsequently modified, cancelled or abrogated due to the existence of conflicting leases, operating agreements, private claims or other future obligations or conditions which may affect all or any portion of the leased Tract, it shall not relieve the Lessee of the obligation to pay any bonus due thereon to the Louisiana State Mineral Board, nor shall the Louisiana State Mineral Board be obligated to refund any consideration paid by the Lessor prior to such modification, cancellation, or abrogation, including, but not limited to, bonuses, rentals and royalties.

NOTE: The above Tract is located upon a restricted scenic river and all operations in this area must be conducted in strict conformity with the regulations of the Corps of Engineers, U.S. Army.

Applicant: THEOPHILUS OIL, GAS & LAND SERVICES, LLC

Bidder	Cash Payment	Price/Acre	Rental	Oil	Gas	Other

Legend
08090109
Counties
DOQQ2004



TRACT 40114 - Red River Parish, Louisiana

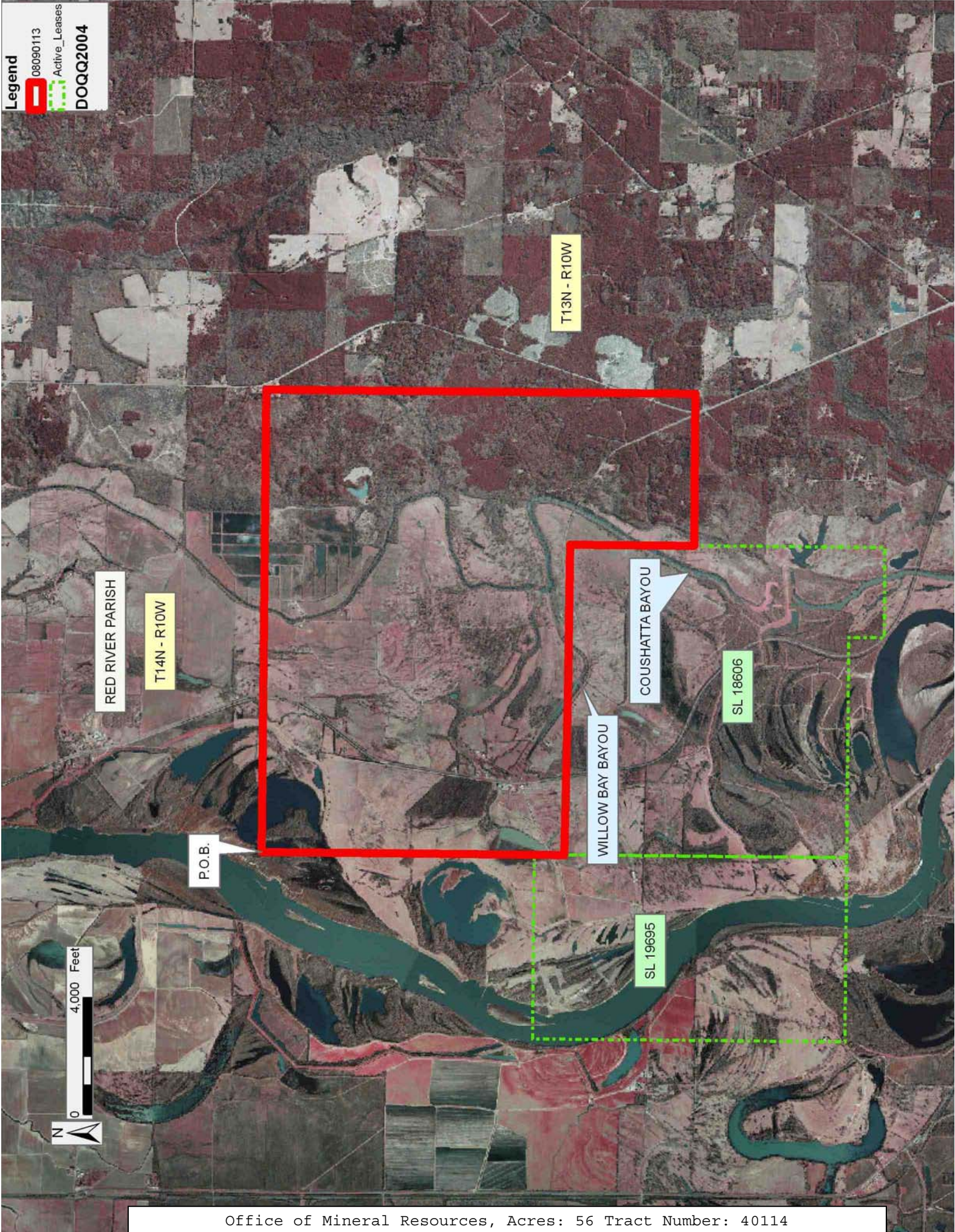
All of the lands now or formerly constituting the beds and bottoms of all water bodies of every nature and description as to which title is vested in the State of Louisiana, together with all islands arising therein and other lands formed by accretion or by reliction, where allowed by law, excepting tax adjudicated lands, and not presently under mineral lease on September 10, 2008, situated in Red River Parish, Louisiana, and more particularly described as follows: Beginning at a point having Coordinates of X = 1,708,555.00 and Y = 540,012.40; thence East 15,840.00 feet to a point having Coordinates of X = 1,724,395.00 and Y = 540,012.40; thence South 14,702.40 feet to a point having Coordinates of X = 1,724,395.00 and Y = 525,310.00; thence West 5,205.00 feet to a point on the East boundary of State Lease No. 18606 having Coordinates of X = 1,719,190.00 and Y = 525,310.00; thence along the boundary of said State Lease No. 18606 the following courses: North 4,245.00 feet to a corner having Coordinates of X = 1,719,190.00 and Y = 529,555.00; North 89 degrees 41 minutes 46 seconds West 5,280.07 feet to a corner having Coordinates of X = 1,713,910.00 and Y = 529,583.00 and North 89 degrees 20 minutes 12 seconds West 5,355.36 feet to its Northwest corner, also being a point on the East boundary of State Lease No. 19695 having Coordinates of X = 1,708,555.00 and Y = 529,645.00; thence North 1,030.14 feet along the East boundary of said State Lease No. 19695 to its Northeast corner having Coordinates of X = 1,708,555.00 and Y = 530,675.14; thence North 9,337.26 feet to the point of beginning, containing approximately **56 acres**, all as more particularly outlined on a plat on file in the Office of Mineral Resources, Department of Natural Resources. All bearings, distances and coordinates are based on Louisiana Coordinate System of 1927, (North or South Zone), where applicable.

NOTE: The above description of the Tract nominated for lease has been provided and corrected, where required, exclusively by the nomination party. Any mineral lease selected from this Tract and awarded by the Louisiana State Mineral Board shall be without warranty of any kind, either express, implied, or statutory, including, but not limited to, the implied warranties of merchantability and fitness for a particular purpose. Should the mineral lease awarded by the Louisiana State Mineral Board be subsequently modified, cancelled or abrogated due to the existence of conflicting leases, operating agreements, private claims or other future obligations or conditions which may affect all or any portion of the leased Tract, it shall not relieve the Lessee of the obligation to pay any bonus due thereon to the Louisiana State Mineral Board, nor shall the Louisiana State Mineral Board be obligated to refund any consideration paid by the Lessor prior to such modification, cancellation, or abrogation, including, but not limited to, bonuses, rentals and royalties.

Applicant: THEOPHILUS OIL, GAS & LAND SERVICES, LLC

Bidder	Cash Payment	Price/Acre	Rental	Oil	Gas	Other

Legend
08090113
Active_Leases
DOQQ2004



TRACT 40115 - Red River Parish, Louisiana

All of the lands now or formerly constituting the beds and bottoms of all water bodies of every nature and description as to which title is vested in the State of Louisiana, together with all islands arising therein and other lands formed by accretion or by reliction, where allowed by law, excepting tax adjudicated lands, and not presently under mineral lease on September 10, 2008, situated in Red River Parish, Louisiana, and more particularly described as follows: Beginning at a point having Coordinates of X = 1,740,020.00 and Y = 539,928.44; thence East 8,615.79 feet to the Southwest corner of State Lease No. 19694 having Coordinates of X = 1,748,635.79 and Y = 539,928.44; thence East 7,224.21 feet along the South boundary of said State Lease No. 19694 to a point having Coordinates of X = 1,755,860.00 and Y = 539,928.44; thence South 15,894.74 feet to a point having Coordinates of X = 1,755,860.00 and Y = 524,033.70; thence West 15,840.00 feet to a point having Coordinates of X = 1,740,020.00 and Y = 524,033.70; thence North 15,894.74 feet to the point of beginning, containing approximately **52 acres**, all as more particularly outlined on a plat on file in the Office of Mineral Resources, Department of Natural Resources. All bearings, distances and coordinates are based on Louisiana Coordinate System of 1927, (North or South Zone), where applicable.

NOTE: The above description of the Tract nominated for lease has been provided and corrected, where required, exclusively by the nomination party. Any mineral lease selected from this Tract and awarded by the Louisiana State Mineral Board shall be without warranty of any kind, either express, implied, or statutory, including, but not limited to, the implied warranties of merchantability and fitness for a particular purpose. Should the mineral lease awarded by the Louisiana State Mineral Board be subsequently modified, cancelled or abrogated due to the existence of conflicting leases, operating agreements, private claims or other future obligations or conditions which may affect all or any portion of the leased Tract, it shall not relieve the Lessee of the obligation to pay any bonus due thereon to the Louisiana State Mineral Board, nor shall the Louisiana State Mineral Board be obligated to refund any consideration paid by the Lessor prior to such modification, cancellation, or abrogation, including, but not limited to, bonuses, rentals and royalties.

Bidder	Cash Payment	Price/Acre	Rental	Oil	Gas	Other

Applicant: THEOPHILUS OIL, GAS & LAND SERVICES, LLC

Legend
08090111
Active_Leases
DOQQ2004

SL 19694

RED RIVER PARISH

T14N - R9W

GRAND BAYOU

P.O.B.

T13N - R10W

