

TRACT 40086 - Bossier and Caddo Parishes, Louisiana

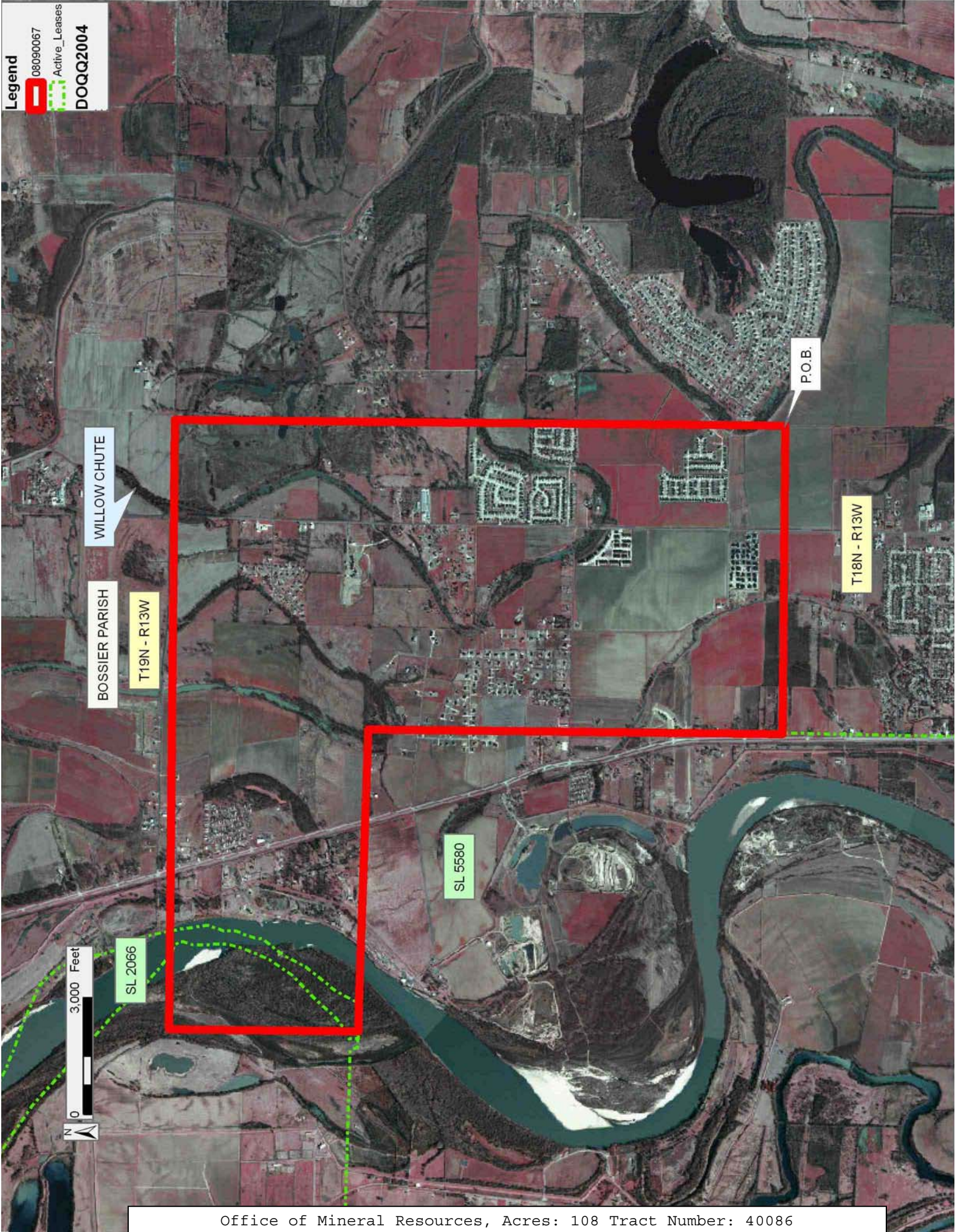
All of the lands now or formerly constituting the beds and bottoms of all water bodies of every nature and description as to which title is vested in the State of Louisiana, together with all islands arising therein and other lands formed by accretion or by reliction, where allowed by law, excepting tax adjudicated lands, and not presently under mineral lease on September 10, 2008, situated in Bossier and Caddo Parishes, Louisiana, and more particularly described as follows: Beginning at a point having Coordinates of X = 1,613,100.00 and Y = 715,980.00; thence East 15,660.00 feet to a point having Coordinates of X = 1,628,760.00 and Y = 715,980.00; thence South 15,680.00 feet to a point having Coordinates of X = 1,628,760.00 and Y = 700,300.00; thence West approximately 7,893 feet to a point on the East boundary of State Lease No. 5580 having a Coordinate of Y = 700,300.00; thence along the East and North boundary of said State Lease No. 5580 the following courses and distances: Northerly approximately 10,638 feet and Westerly approximately 7,751 feet to a point having a Coordinate of X = 1,613,100.00; thence North approximately 4,848 feet to the point of beginning, **LESS AND EXCEPT** any portion of State Lease No. 2066 that may lie within the above described tract, containing approximately **108 acres**, all as more particularly outlined on a plat on file in the Office of Mineral Resources, Department of Natural Resources. All bearings, distances and coordinates are based on Louisiana Coordinate System of 1927, (North or South Zone), where applicable.

NOTE: The above description of the Tract nominated for lease has been provided and corrected, where required, exclusively by the nomination party. Any mineral lease selected from this Tract and awarded by the Louisiana State Mineral Board shall be without warranty of any kind, either express, implied, or statutory, including, but not limited to, the implied warranties of merchantability and fitness for a particular purpose. Should the mineral lease awarded by the Louisiana State Mineral Board be subsequently modified, cancelled or abrogated due to the existence of conflicting leases, operating agreements, private claims or other future obligations or conditions which may affect all or any portion of the leased Tract, it shall not relieve the Lessee of the obligation to pay any bonus due thereon to the Louisiana State Mineral Board, nor shall the Louisiana State Mineral Board be obligated to refund any consideration paid by the Lessor prior to such modification, cancellation, or abrogation, including, but not limited to, bonuses, rentals and royalties.

Bidder	Cash Payment	Price/Acre	Rental	Oil	Gas	Other

Applicant: THEOPHILUS OIL GAS & LAND SERVICES, LLC

Legend
080900067
Active_Leases
DOQQ2004



TRACT 40087 - Webster Parish, Louisiana

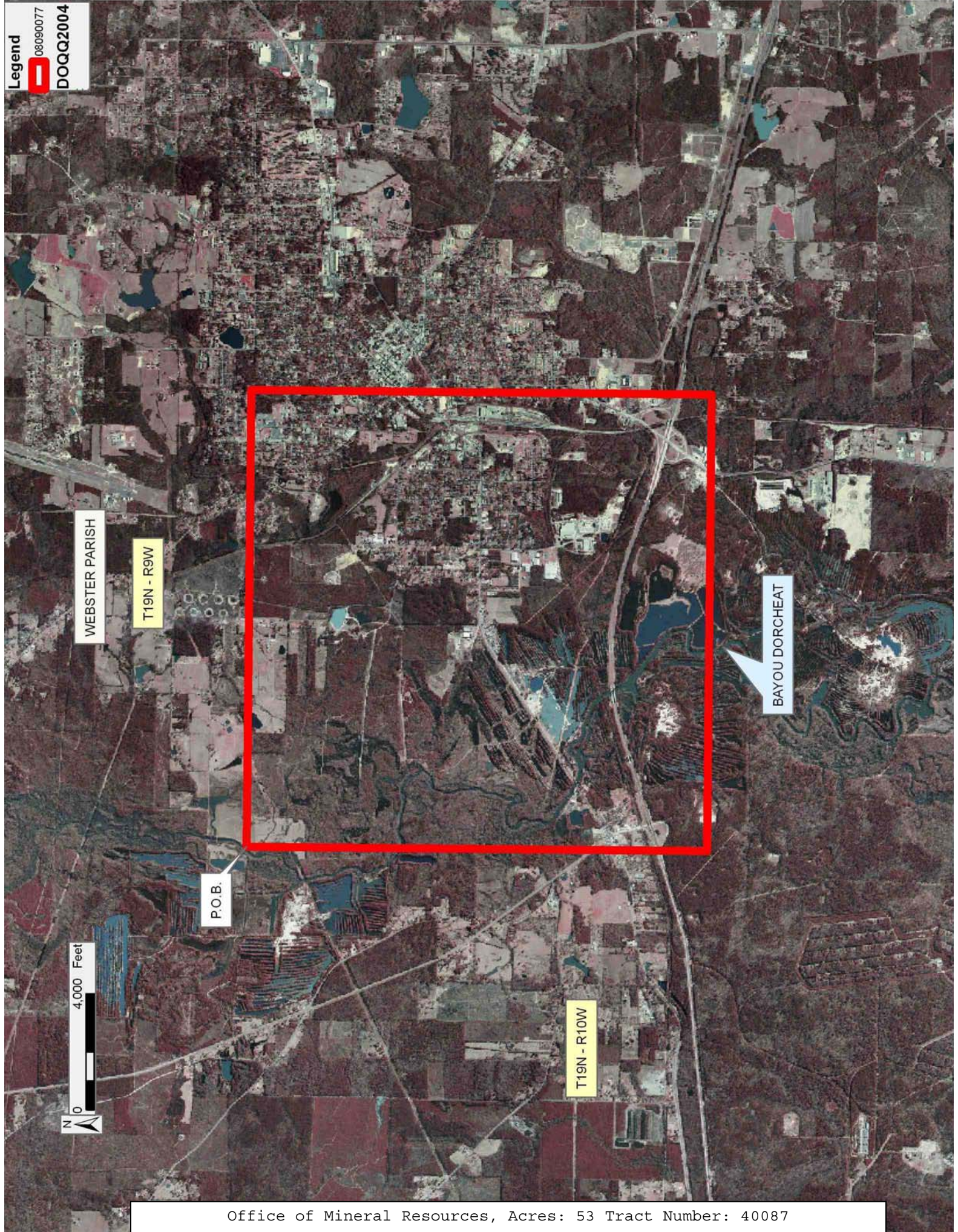
All of the lands now or formerly constituting the beds and bottoms of all water bodies of every nature and description as to which title is vested in the State of Louisiana, together with all islands arising therein and other lands formed by accretion or by reliction, where allowed by law, excepting tax adjudicated lands, and not presently under mineral lease on September 10, 2008, situated in Webster Parish, Louisiana, and more particularly described as follows: Beginning at a point having Coordinates of X = 1,741,506.90 and Y = 714,562.50; thence East 15,700.00 feet to a point having Coordinates of X = 1,757,206.90 and Y = 714,562.50; thence South 15,825.60 feet to a point having Coordinates of X = 1,757,206.90 and Y = 698,736.90; thence West 15,700.00 feet to a point having Coordinates of X = 1,741,506.90 and Y = 698,736.90; thence North 15,825.60 feet to the point of beginning, (This lease includes only waterbottoms claimed and owned by the state and specifically excludes any land which the state may claim or own and to which the mineral rights are vested in the state), containing approximately **53 acres**, all as more particularly outlined on a plat on file in the Office of Mineral Resources, Department of Natural Resources. All bearings, distances and coordinates are based on Louisiana Coordinate System of 1927, (North or South Zone), where applicable.

NOTE: The above description of the Tract nominated for lease has been provided and corrected, where required, exclusively by the nomination party. Any mineral lease selected from this Tract and awarded by the Louisiana State Mineral Board shall be without warranty of any kind, either express, implied, or statutory, including, but not limited to, the implied warranties of merchantability and fitness for a particular purpose. Should the mineral lease awarded by the Louisiana State Mineral Board be subsequently modified, cancelled or abrogated due to the existence of conflicting leases, operating agreements, private claims or other future obligations or conditions which may affect all or any portion of the leased Tract, it shall not relieve the Lessee of the obligation to pay any bonus due thereon to the Louisiana State Mineral Board, nor shall the Louisiana State Mineral Board be obligated to refund any consideration paid by the Lessor prior to such modification, cancellation, or abrogation, including, but not limited to, bonuses, rentals and royalties.

NOTE: The above Tract is located upon a restricted scenic river and all operations in this area must be conducted in strict conformity with the regulations of the Corps of Engineers, U.S. Army.

Applicant: THEOPHILUS OIL GAS & LAND SERVICES, LLC

Bidder	Cash Payment	Price/Acre	Rental	Oil	Gas	Other



TRACT 40088 - Webster Parish, Louisiana

All of the lands now or formerly constituting the beds and bottoms of all water bodies of every nature and description as to which title is vested in the State of Louisiana, together with all islands arising therein and other lands formed by accretion or by reliction, where allowed by law, excepting tax adjudicated lands, and not presently under mineral lease on September 10, 2008, situated in Webster Parish, Louisiana, and more particularly described as follows: Beginning at a point having Coordinates of X = 1,725,806.90 and Y = 714,562.50; thence East 15,700.00 feet to a point having Coordinates of X = 1,741,506.90 and Y = 714,562.50; thence South 15,825.60 feet to a point having Coordinates of X = 1,741,506.90 and Y = 698,736.90; thence West 15,700.00 feet to a point having Coordinates of X = 1,725,806.90 and Y = 698,736.90; thence North 15,825.60 feet to the point of beginning, (This lease includes only waterbottoms claimed and owned by the state and specifically excludes any land which the state may claim or own and to which the mineral rights are vested in the state), containing approximately **11 acres**, all as more particularly outlined on a plat on file in the Office of Mineral Resources, Department of Natural Resources. All bearings, distances and coordinates are based on Louisiana Coordinate System of 1927, (North or South Zone), where applicable.

NOTE: The above description of the Tract nominated for lease has been provided and corrected, where required, exclusively by the nomination party. Any mineral lease selected from this Tract and awarded by the Louisiana State Mineral Board shall be without warranty of any kind, either express, implied, or statutory, including, but not limited to, the implied warranties of merchantability and fitness for a particular purpose. Should the mineral lease awarded by the Louisiana State Mineral Board be subsequently modified, cancelled or abrogated due to the existence of conflicting leases, operating agreements, private claims or other future obligations or conditions which may affect all or any portion of the leased Tract, it shall not relieve the Lessee of the obligation to pay any bonus due thereon to the Louisiana State Mineral Board, nor shall the Louisiana State Mineral Board be obligated to refund any consideration paid by the Lessor prior to such modification, cancellation, or abrogation, including, but not limited to, bonuses, rentals and royalties.

NOTE: The above Tract is located upon a restricted scenic river and all operations in this area must be conducted in strict conformity with the regulations of the Corps of Engineers, U.S. Army.

Applicant: THEOPHILUS OIL GAS & LAND SERVICES, LLC

Bidder	Cash Payment	Price/Acre	Rental	Oil	Gas	Other

WEBSTER PARISH

T19N - R10W

P.O.B.

T18N - R10W

0 4,000 Feet



TRACT 40089 - Caddo Parish, Louisiana

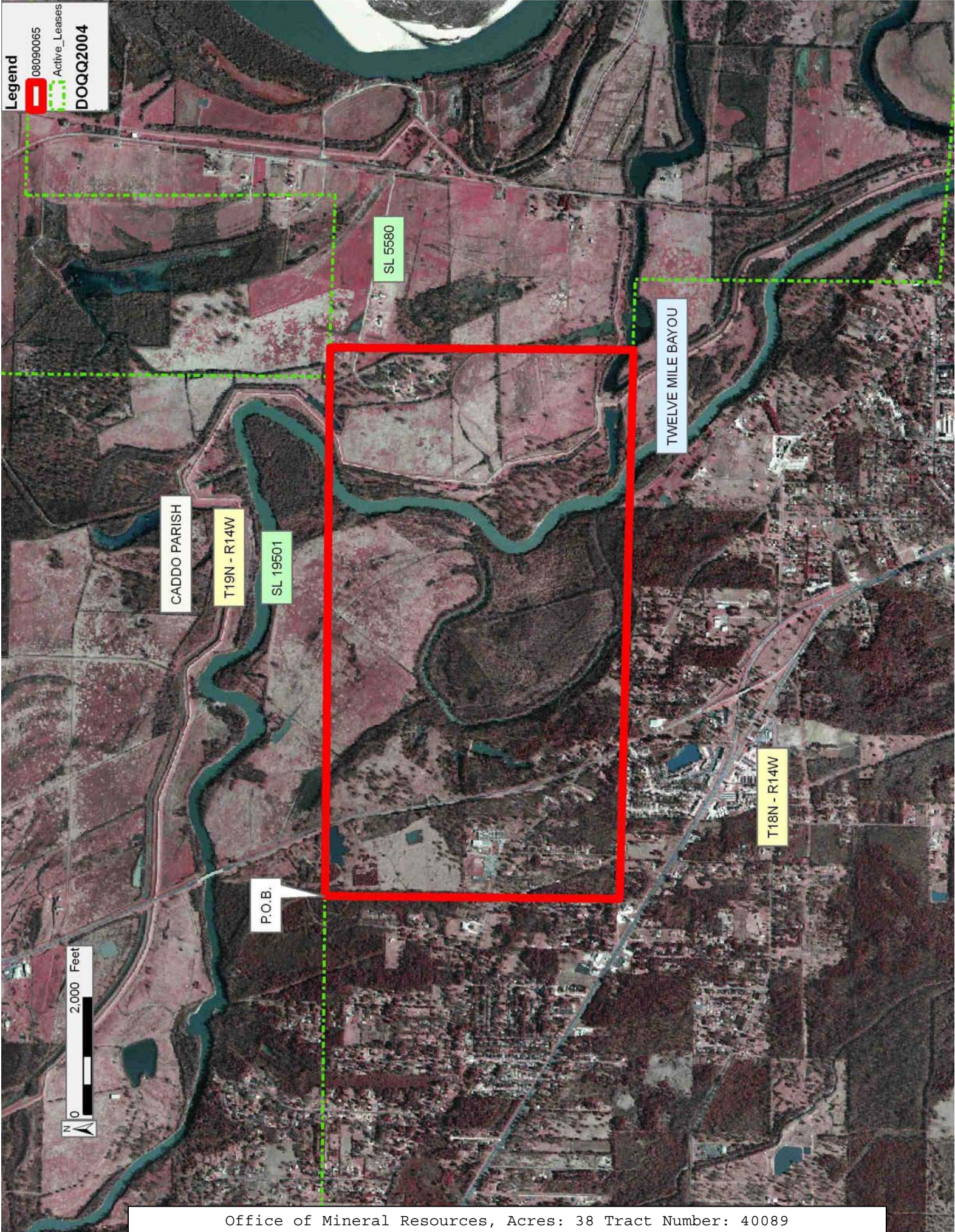
All of the lands now or formerly constituting the beds and bottoms of all water bodies of every nature and description as to which title is vested in the State of Louisiana, together with all islands arising therein and other lands formed by accretion or by reliction, where allowed by law, excepting tax adjudicated lands, and not presently under mineral lease on September 10, 2008, situated in Caddo Parish, Louisiana, and more particularly described as follows: Beginning at a point on the South boundary of State Lease No. 19501 having Coordinates of X = 1,596,174.80 and Y = 706,175.00; thence East 8,891.20 feet along the South boundary of said State Lease No. 19501 to its Southeast corner having Coordinates of X = 1,605,066.00 and Y = 706,175.00; thence Easterly approximately 496 feet to the most West Northwest corner of State Lease No. 5580; thence Southerly approximately 5,187 feet along the West boundary of said State Lease No. 5580 to its most West Southwest corner; thence Westerly approximately 9,395 feet to a point having Coordinates of X = 1,596,174.80 and Y = 701,132.10; thence North 5,042.90 feet to the point of beginning, **LESS AND EXCEPT** any portion of State Lease No. 5500 that may lie within the above described tract, containing approximately **38 acres**, all as more particularly outlined on a plat on file in the Office of Mineral Resources, Department of Natural Resources. All bearings, distances and coordinates are based on Louisiana Coordinate System of 1927, (North or South Zone), where applicable.

NOTE: The above description of the Tract nominated for lease has been provided and corrected, where required, exclusively by the nomination party. Any mineral lease selected from this Tract and awarded by the Louisiana State Mineral Board shall be without warranty of any kind, either express, implied, or statutory, including, but not limited to, the implied warranties of merchantability and fitness for a particular purpose. Should the mineral lease awarded by the Louisiana State Mineral Board be subsequently modified, cancelled or abrogated due to the existence of conflicting leases, operating agreements, private claims or other future obligations or conditions which may affect all or any portion of the leased Tract, it shall not relieve the Lessee of the obligation to pay any bonus due thereon to the Louisiana State Mineral Board, nor shall the Louisiana State Mineral Board be obligated to refund any consideration paid by the Lessor prior to such modification, cancellation, or abrogation, including, but not limited to, bonuses, rentals and royalties.

Applicant: THEOPHILUS OIL GAS & LAND SERVICES, LLC

Bidder	Cash Payment	Price/Acre	Rental	Oil	Gas	Other

Legend
08090065
Active_Leases
DOQQ2004



TRACT 40090 - Bossier and Caddo Parishes, Louisiana

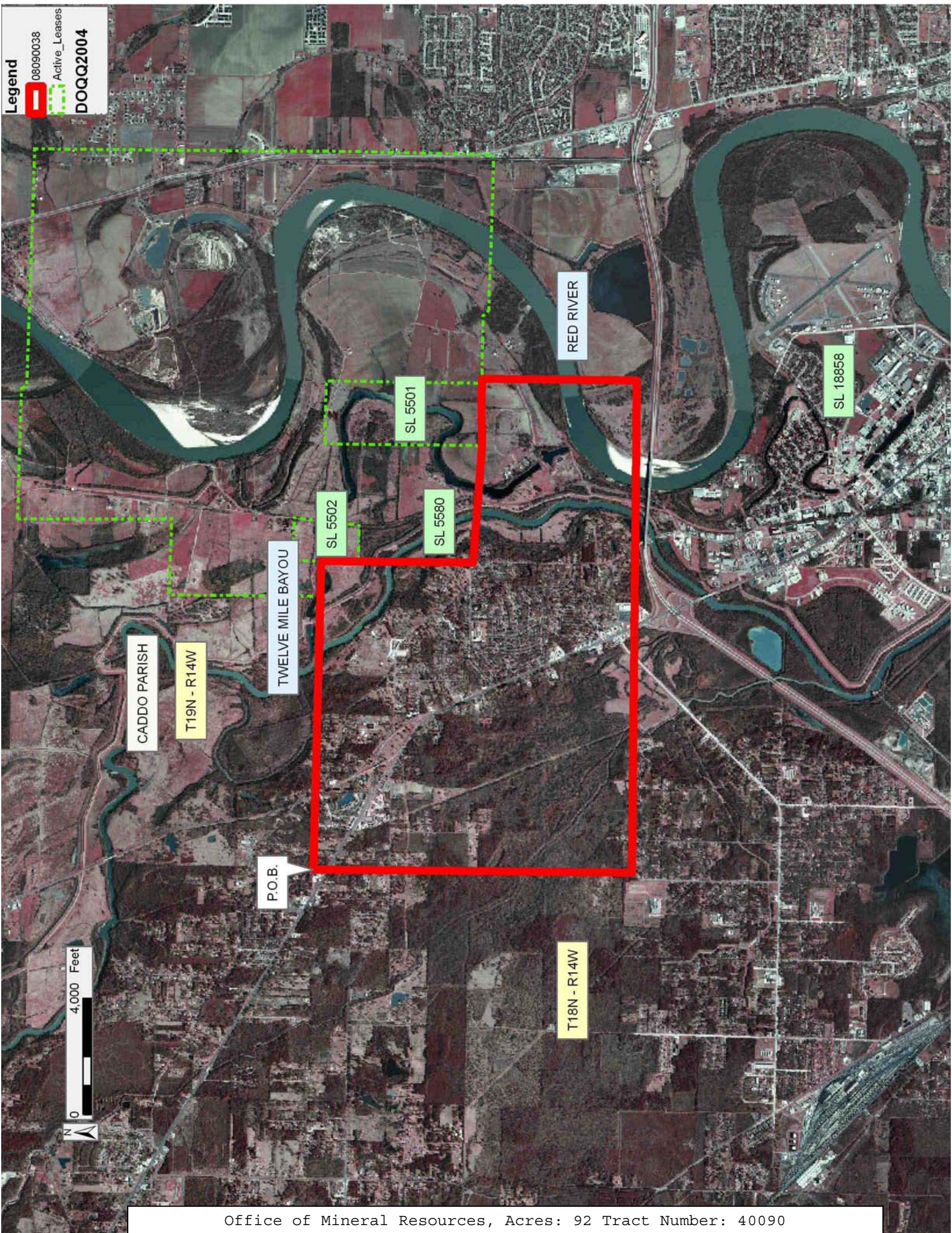
All of the lands now or formerly constituting the beds and bottoms of all water bodies of every nature and description as to which title is vested in the State of Louisiana, together with all islands arising therein and other lands formed by accretion or by reliction, where allowed by law, excepting tax adjudicated lands, and not presently under mineral lease on September 10, 2008, situated in Bossier and Caddo Parishes, Louisiana, and more particularly described as follows: Beginning at a point having Coordinates of X = 1,596,174.80 and Y = 701,132.10; thence Easterly approximately 9,395 feet to the most West Southwest corner of State Lease No. 5580; thence along the South, West and South boundary of said State Lease No. 5580 the following courses and distances: Easterly approximately 1,211 feet, Southerly approximately 5,208 feet and Easterly approximately 6,322 feet to a point having a Coordinate of X = 1,613,100.00; thence South approximately 5,313 feet to a point on the North boundary of State Lease No. 18858 having Coordinates of X = 1,613,100.00 and Y = 690,182.00; thence West 2,374.00 feet along the North boundary of said State Lease No. 18858 to its Northwest corner having Coordinates of X = 1,610,726.00 and Y = 690,182.00; thence West 14,551.20 feet to a point having Coordinates of X = 1,596,174.80 and Y = 690,182.00; thence North 10,950.10 feet to the point of beginning, **LESS AND EXCEPT** any portion of State Lease No. 5500 and State Lease No. 5501 that may lie within the above described tract, containing approximately **92 acres**, all as more particularly outlined on a plat on file in the Office of Mineral Resources, Department of Natural Resources. All bearings, distances and coordinates are based on Louisiana Coordinate System of 1927, (North or South Zone), where applicable.

NOTE: The above description of the Tract nominated for lease has been provided and corrected, where required, exclusively by the nomination party. Any mineral lease selected from this Tract and awarded by the Louisiana State Mineral Board shall be without warranty of any kind, either express, implied, or statutory, including, but not limited to, the implied warranties of merchantability and fitness for a particular purpose. Should the mineral lease awarded by the Louisiana State Mineral Board be subsequently modified, cancelled or abrogated due to the existence of conflicting leases, operating agreements, private claims or other future obligations or conditions which may affect all or any portion of the leased Tract, it shall not relieve the Lessee of the obligation to pay any bonus due thereon to the Louisiana State Mineral Board, nor shall the Louisiana State Mineral Board be obligated to refund any consideration paid by the Lessor prior to such modification, cancellation, or abrogation, including, but not limited to, bonuses, rentals and royalties.

Applicant: THEOPHILUS OIL GAS & LAND SERVICES, LLC

Bidder	Cash Payment	Price/Acre	Rental	Oil	Gas	Other

Legend
080900038
Active_Leases
DOQQ2004



TRACT 40091 - Bossier and Caddo Parishes, Louisiana

All of the lands now or formerly constituting the beds and bottoms of all water bodies of every nature and description as to which title is vested in the State of Louisiana, together with all islands arising therein and other lands formed by accretion or by reliction, where allowed by law, excepting tax adjudicated lands, and not presently under mineral lease on September 10, 2008, situated in Bossier and Caddo Parishes, Louisiana, and more particularly described as follows: Beginning at a point having Coordinates of X = 1,628,760.00 and Y = 700,300.00; thence South 15,696.65 feet to a point having Coordinates of X = 1,628,760.00 and Y = 684,603.35; thence West 5,414.00 feet to a point on the East boundary of State Lease No. 18858 having Coordinates of X = 1,623,346.00 and Y = 684,603.35; thence along the East and North boundary of said State Lease No. 18858 the following courses and distances: North 5,578.65 feet to a corner having Coordinates of X = 1,623,346.00 and Y = 690,182.00 and West 10,246.00 feet to a point having Coordinates of X = 1,613,100.00 and Y = 690,182.00; thence North approximately 5,313 feet to a point on the South boundary of State Lease No. 5580 having a Coordinate of X = 1,613,100.00; thence along the South and East boundary of said State Lease No. 5580 the following courses and distances: Easterly approximately 7,776 feet to a corner and Northerly approximately 5,138 feet to a point having a Coordinate of Y = 700,300.00; thence East approximately 7,893 feet to the point of beginning, containing approximately **86 acres**, all as more particularly outlined on a plat on file in the Office of Mineral Resources, Department of Natural Resources. All bearings, distances and coordinates are based on Louisiana Coordinate System of 1927, (North or South Zone), where applicable.

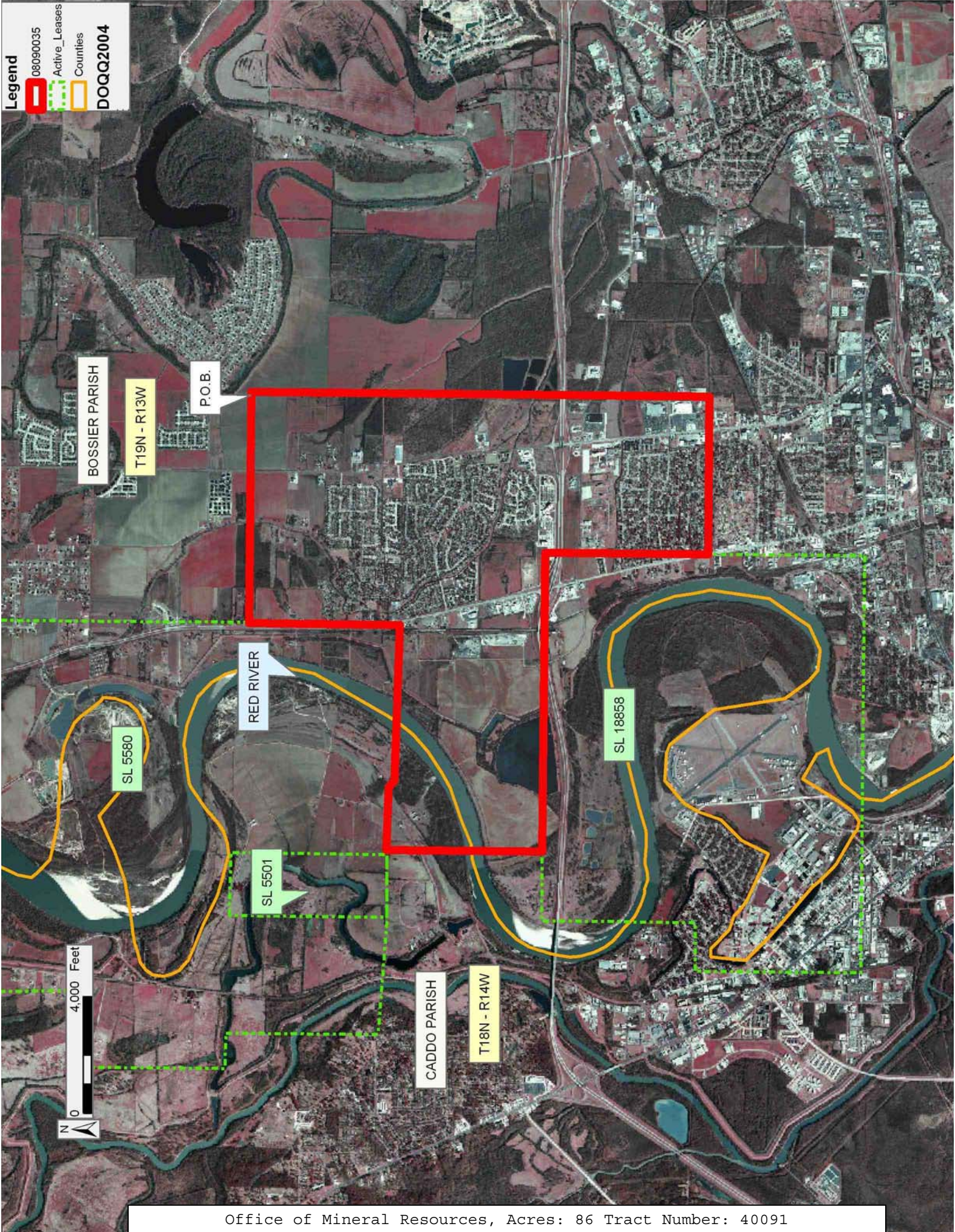
NOTE: The above description of the Tract nominated for lease has been provided and corrected, where required, exclusively by the nomination party. Any mineral lease selected from this Tract and awarded by the Louisiana State Mineral Board shall be without warranty of any kind, either express, implied, or statutory, including, but not limited to, the implied warranties of merchantability and fitness for a particular purpose. Should the mineral lease awarded by the Louisiana State Mineral Board be subsequently modified, cancelled or abrogated due to the existence of conflicting leases, operating agreements, private claims or other future obligations or conditions which may affect all or any portion of the leased Tract, it shall not relieve the Lessee of the obligation to pay any bonus due thereon to the Louisiana State Mineral Board, nor shall the Louisiana State Mineral Board be obligated to refund any consideration paid by the Lessor prior to such modification, cancellation, or abrogation, including, but not limited to, bonuses, rentals and royalties.

Applicant: THEOPHILUS OIL GAS & LAND SERVICES, LLC

Bidder	Cash Payment	Price/Acre	Rental	Oil	Gas	Other

Legend

- 08090035
- Active_Leases
- Counties
- DOQQ2004



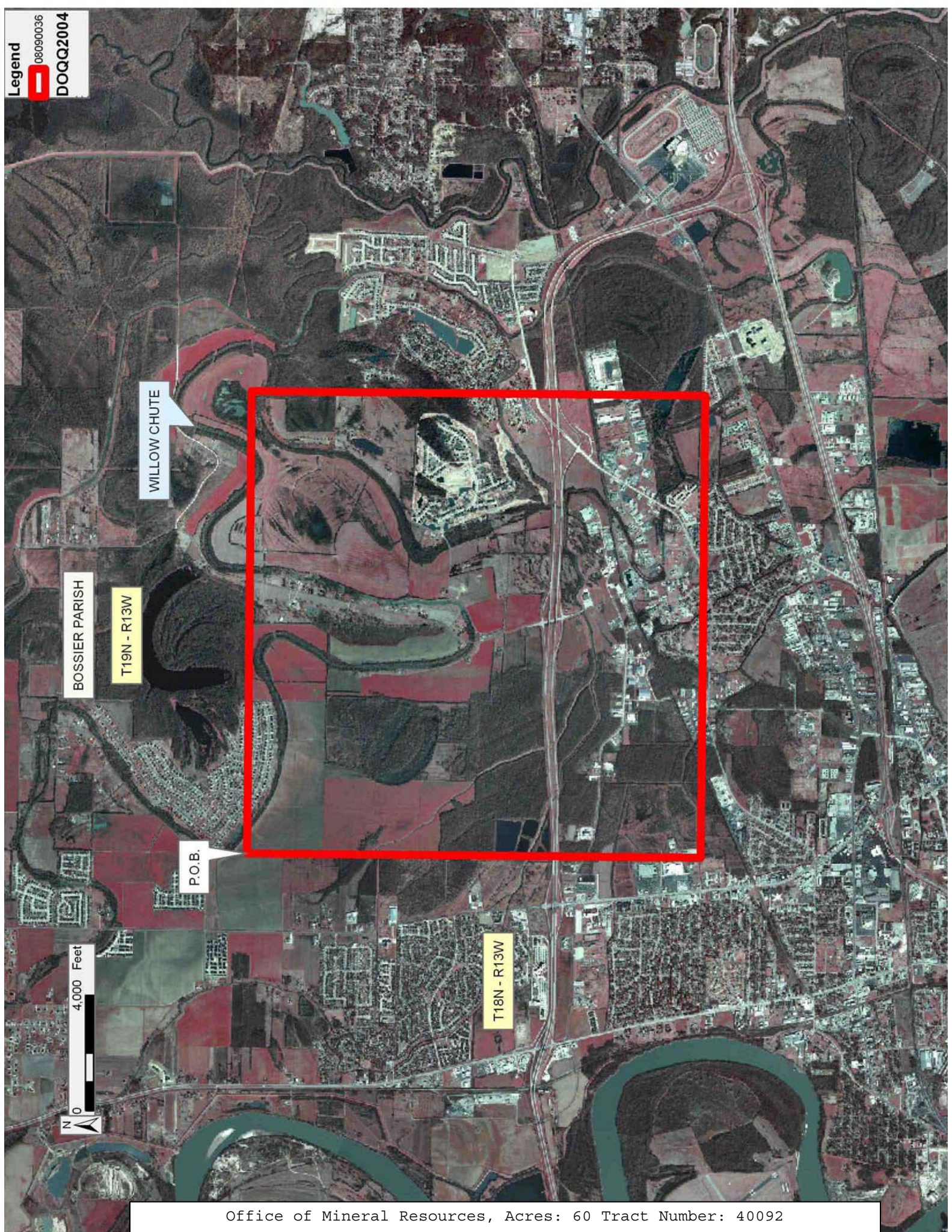
TRACT 40092 - Bossier Parish, Louisiana

All of the lands now or formerly constituting the beds and bottoms of all water bodies of every nature and description as to which title is vested in the State of Louisiana, together with all islands arising therein and other lands formed by accretion or by reliction, where allowed by law, excepting tax adjudicated lands, and not presently under mineral lease on September 10, 2008, situated in Bossier Parish, Louisiana, and more particularly described as follows: Beginning at a point having Coordinates of X = 1,628,760.00 and Y = 700,300.00; thence East 15,990.00 feet to a point having Coordinates of X = 1,644,750.00 and Y = 700,300.00; thence South 15,696.65 feet to a point having Coordinates of X = 1,644,750.00 and Y = 684,603.35; thence West 15,990.00 feet to a point having Coordinates of X = 1,628,760.00 and Y = 684,603.35; thence North 15,696.65 feet to the point of beginning, (This tract includes only waterbottoms claimed and owned by the state and specifically excludes any land which the state may claim or own and to which the mineral rights are vested in the state), containing approximately **60 acres**, all as more particularly outlined on a plat on file in the Office of Mineral Resources, Department of Natural Resources. All bearings, distances and coordinates are based on Louisiana Coordinate System of 1927, (North or South Zone), where applicable.

NOTE: The above description of the Tract nominated for lease has been provided and corrected, where required, exclusively by the nomination party. Any mineral lease selected from this Tract and awarded by the Louisiana State Mineral Board shall be without warranty of any kind, either express, implied, or statutory, including, but not limited to, the implied warranties of merchantability and fitness for a particular purpose. Should the mineral lease awarded by the Louisiana State Mineral Board be subsequently modified, cancelled or abrogated due to the existence of conflicting leases, operating agreements, private claims or other future obligations or conditions which may affect all or any portion of the leased Tract, it shall not relieve the Lessee of the obligation to pay any bonus due thereon to the Louisiana State Mineral Board, nor shall the Louisiana State Mineral Board be obligated to refund any consideration paid by the Lessor prior to such modification, cancellation, or abrogation, including, but not limited to, bonuses, rentals and royalties.

Bidder	Cash Payment	Price/Acre	Rental	Oil	Gas	Other

Applicant: THEOPHILUS OIL GAS & LAND SERVICES, LLC



TRACT 40093 - Bossier Parish, Louisiana

All of the lands now or formerly constituting the beds and bottoms of all water bodies of every nature and description as to which title is vested in the State of Louisiana, together with all islands arising therein and other lands formed by accretion or by reliction, where allowed by law, excepting tax adjudicated lands, and not presently under mineral lease on September 10, 2008, situated in Bossier Parish, Louisiana, and more particularly described as follows: Beginning at a point having Coordinates of X = 1,644,750.00 and Y = 700,300.00; thence East 16,150.00 feet to a point having Coordinates of X = 1,660,900.00 and Y = 700,300.00; thence South 15,696.65 feet to a point having Coordinates of X = 1,660,900.00 and Y = 684,603.35; thence West 16,150.00 feet to a point having Coordinates of X = 1,644,750.00 and Y = 684,603.35; thence North 15,696.65 feet to the point of beginning, (This lease includes only waterbottoms claimed and owned by the state and specifically excludes any land which the state may claim or own and to which the mineral rights are vested in the state), containing approximately **80 acres**, all as more particularly outlined on a plat on file in the Office of Mineral Resources, Department of Natural Resources. All bearings, distances and coordinates are based on Louisiana Coordinate System of 1927, (North or South Zone), where applicable.

NOTE: The above description of the Tract nominated for lease has been provided and corrected, where required, exclusively by the nomination party. Any mineral lease selected from this Tract and awarded by the Louisiana State Mineral Board shall be without warranty of any kind, either express, implied, or statutory, including, but not limited to, the implied warranties of merchantability and fitness for a particular purpose. Should the mineral lease awarded by the Louisiana State Mineral Board be subsequently modified, cancelled or abrogated due to the existence of conflicting leases, operating agreements, private claims or other future obligations or conditions which may affect all or any portion of the leased Tract, it shall not relieve the Lessee of the obligation to pay any bonus due thereon to the Louisiana State Mineral Board, nor shall the Louisiana State Mineral Board be obligated to refund any consideration paid by the Lessor prior to such modification, cancellation, or abrogation, including, but not limited to, bonuses, rentals and royalties.

Bidder	Cash Payment	Price/Acre	Rental	Oil	Gas	Other

Applicant: THEOPHILUS OIL GAS & LAND SERVICES, LLC

BOSSIER PARISH

RED CHUTE BAYOU

T19N - R12W

T18N - R12W

P.O.B.

WILLOW CHUTE

MACK'S BAYOU



TRACT 40094 - Webster Parish, Louisiana

All of the lands now or formerly constituting the beds and bottoms of all water bodies of every nature and description as to which title is vested in the State of Louisiana, together with all islands arising therein and other lands formed by accretion or by reliction, where allowed by law, excepting tax adjudicated lands, and not presently under mineral lease on September 10, 2008, situated in Webster Parish, Louisiana, and more particularly described as follows: Beginning at a point having Coordinates of X = 1,741,506.90 and Y = 698,736.90; thence East 15,700.00 feet to a point having Coordinates of X = 1,757,206.90 and Y = 698,736.90; thence South 15,837.40 feet to a point having Coordinates of X = 1,757,206.90 and Y = 682,899.50; thence West 15,700.00 feet to a point having Coordinates of X = 1,741,506.90 and Y = 682,899.50; thence North 15,837.40 feet to the point of beginning, (This lease includes only waterbottoms claimed and owned by the state and specifically excludes any land which the state may claim or own and to which the mineral rights are vested in the state), containing approximately **62 acres**, all as more particularly outlined on a plat on file in the Office of Mineral Resources, Department of Natural Resources. All bearings, distances and coordinates are based on Louisiana Coordinate System of 1927, (North or South Zone), where applicable.

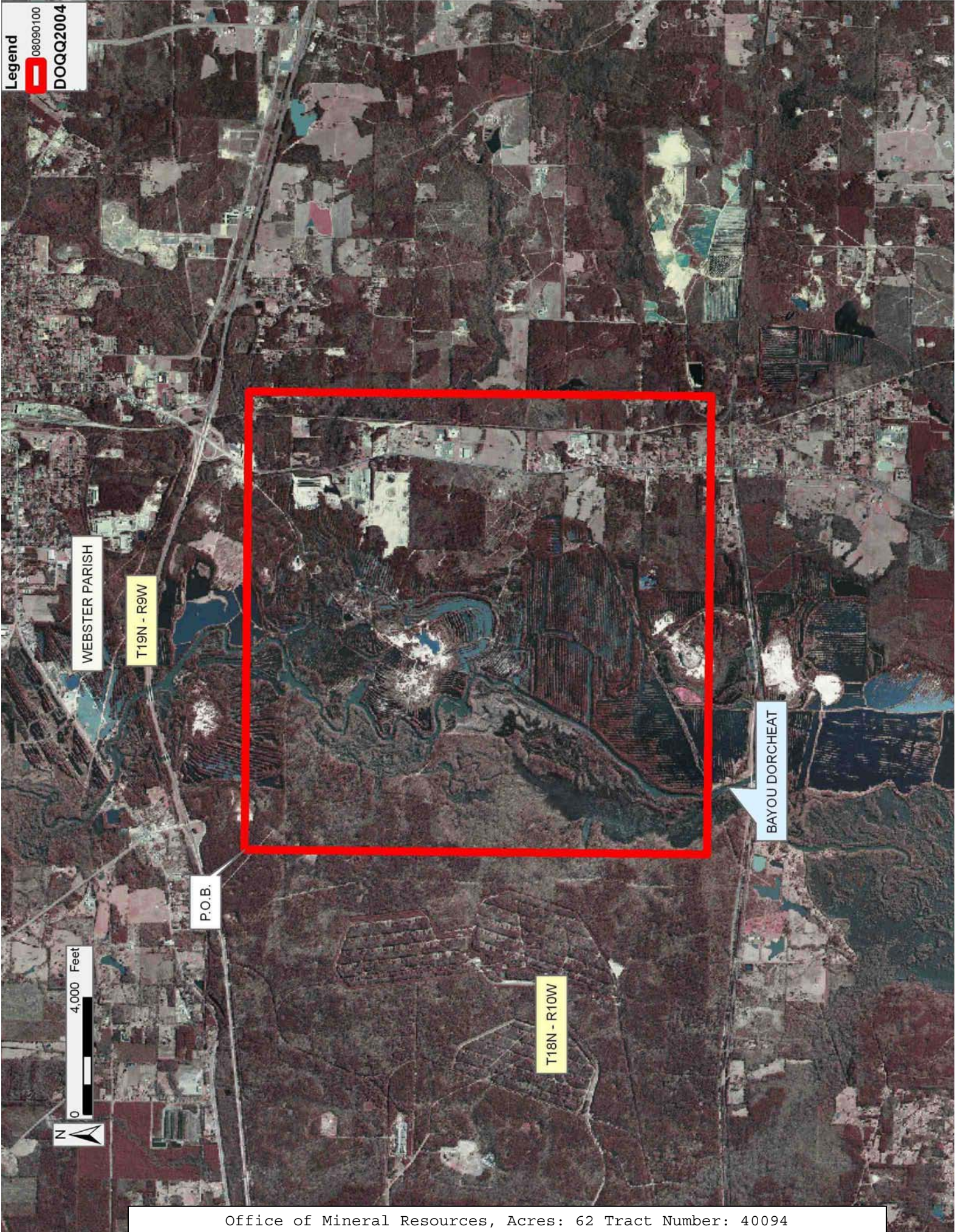
NOTE: The above description of the Tract nominated for lease has been provided and corrected, where required, exclusively by the nomination party. Any mineral lease selected from this Tract and awarded by the Louisiana State Mineral Board shall be without warranty of any kind, either express, implied, or statutory, including, but not limited to, the implied warranties of merchantability and fitness for a particular purpose. Should the mineral lease awarded by the Louisiana State Mineral Board be subsequently modified, cancelled or abrogated due to the existence of conflicting leases, operating agreements, private claims or other future obligations or conditions which may affect all or any portion of the leased Tract, it shall not relieve the Lessee of the obligation to pay any bonus due thereon to the Louisiana State Mineral Board, nor shall the Louisiana State Mineral Board be obligated to refund any consideration paid by the Lessor prior to such modification, cancellation, or abrogation, including, but not limited to, bonuses, rentals and royalties.

NOTE: The above Tract is located upon a restricted scenic river and all operations in this area must be conducted in strict conformity with the regulations of the Corps of Engineers, U.S. Army.

Applicant: THEOPHILUS OIL GAS & LAND SERVICES, LLC

Bidder	Cash Payment	Price/Acre	Rental	Oil	Gas	Other

Legend
08090100
DOQQ2004



TRACT 40095 - Caddo Parish, Louisiana

All of the lands now or formerly constituting the beds and bottoms of all water bodies of every nature and description as to which title is vested in the State of Louisiana, together with all islands arising therein and other lands formed by accretion or by reliction, where allowed by law, excepting tax adjudicated lands, and not presently under mineral lease on September 10, 2008, situated in Caddo Parish, Louisiana, and more particularly described as follows: Beginning at a point having Coordinates of X = 1,572,730.30 and Y = 687,549.20; thence East 12,500.00 feet to a point having Coordinates of X = 1,585,230.30 and Y = 687,549.20; thence South 6,000.00 feet to a point having Coordinates of X = 1,585,230.30 and Y = 681,549.20; thence West 500.00 feet to a point having Coordinates of X = 1,584,730.30 and Y = 681,549.20; thence South 500.00 feet to a point having Coordinates of X = 1,584,730.30 and Y = 681,049.20; thence Westerly approximately 1,986 feet to the Northernmost Northeast corner of State Lease No. 14499, as amended; thence Westerly approximately 2,585 feet along the Northern boundary of said State Lease No. 14499 to its Northernmost Northwest corner; thence Westerly approximately 7,458 feet to a point having Coordinates of X = 1,572,730.30 and Y = 681,309.20; thence North 6,240.00 feet to the point of beginning, **LESS AND EXCEPT** that portion, if any, of State Lease No. 14499, as amended, that may lie within the above described tract, containing approximately **264 acres**, all as more particularly outlined on a plat on file in the Office of Mineral Resources, Department of Natural Resources. All bearings, distances and coordinates are based on Louisiana Coordinate System of 1927, (North or South Zone), where applicable.

NOTE: The above description of the Tract nominated for lease has been provided and corrected, where required, exclusively by the nomination party. Any mineral lease selected from this Tract and awarded by the Louisiana State Mineral Board shall be without warranty of any kind, either express, implied, or statutory, including, but not limited to, the implied warranties of merchantability and fitness for a particular purpose. Should the mineral lease awarded by the Louisiana State Mineral Board be subsequently modified, cancelled or abrogated due to the existence of conflicting leases, operating agreements, private claims or other future obligations or conditions which may affect all or any portion of the leased Tract, it shall not relieve the Lessee of the obligation to pay any bonus due thereon to the Louisiana State Mineral Board, nor shall the Louisiana State Mineral Board be obligated to refund any consideration paid by the Lessor prior to such modification, cancellation, or abrogation, including, but not limited to, bonuses, rentals and royalties.

NOTE: Lessee agrees not to erect any derrick, tank, warehouse or other equipment or structure on the leased premises nor shall Lessee interfere, in any manner, with Lessor's use of the property. Lessee shall have, however, the complete right to drill for, produce, extract and recover the minerals in and beneath said land by drilling or other operations

conducted from the surface of other lands or by the pooling or unitization of the leased premises with other land, lease or leases in the area.

Applicant: THEOPHILUS OIL GAS & LAND SERVICES, LLC

Bidder	Cash Payment	Price/Acre	Rental	Oil	Gas	Other

Legend
08090070
Active_Leases
DOQQ2004

