

TRACT 40076 - Bossier and Caddo Parishes, Louisiana




All of the lands now or formerly constituting the beds and bottoms of all water bodies of every nature and description as to which title is vested in the State of Louisiana, together with all islands arising therein and other lands formed by accretion or by reliction, where allowed by law, excepting tax adjudicated lands, and not presently under mineral lease on September 10, 2008, situated in Bossier and Caddo Parishes, Louisiana, and more particularly described as follows: Beginning at a point on the East boundary of State Lease No. 18980 having Coordinates of X = 1,602,718.37 and Y = 755,900.00; thence East 6,359.27 feet to a point having Coordinates of X = 1,609,077.64 and Y = 755,900.00; thence South 18,000.00 feet to a point on the North boundary of State Lease No. 19304 having Coordinates of X = 1,609,077.64 and Y = 737,900.00; thence West 6,656.38 feet along the North boundary of said State Lease No. 19304 to its Northwest corner having Coordinates of X = 1,602,421.26 and Y = 737,900.00; thence continue West 5,446.33 feet to a point on the East boundary of State Lease No. 19434 having Coordinates of X = 1,596,974.93 and Y = 737,900.00; thence North 5,231.91 feet along the East boundary of said State Lease No. 19434 to its Northeast corner and a point on the South boundary of said State Lease No. 18980 having Coordinates of X = 1,596,974.93 and Y = 743,131.91; thence along the boundary of said State Lease No. 18980 the following courses: South 89 degrees 07 minutes 36 seconds East 5,446.96 feet to a point having Coordinates of X = 1,602,421.26 and Y = 743,048.88 and North 01 degrees 19 minutes 28 seconds East 12,854.55 feet to the point of beginning, containing approximately **347 acres**, all as more particularly outlined on a plat on file in the Office of Mineral Resources, Department of Natural Resources. All bearings, distances and coordinates are based on Louisiana Coordinate System of 1927, (North or South Zone), where applicable.

NOTE: The above description of the Tract nominated for lease has been provided and corrected, where required, exclusively by the nomination party. Any mineral lease selected from this Tract and awarded by the Louisiana State Mineral Board shall be without warranty of any kind, either express, implied, or statutory, including, but not limited to, the implied warranties of merchantability and fitness for a particular purpose. Should the mineral lease awarded by the Louisiana State Mineral Board be subsequently modified, cancelled or abrogated due to the existence of conflicting leases, operating agreements, private claims or other future obligations or conditions which may affect all or any portion of the leased Tract, it shall not relieve the Lessee of the obligation to pay any bonus due thereon to the Louisiana State Mineral Board, nor shall the Louisiana State Mineral Board be obligated to refund any consideration paid by the Lessor prior to such modification, cancellation, or abrogation, including, but not limited to, bonuses, rentals and royalties.

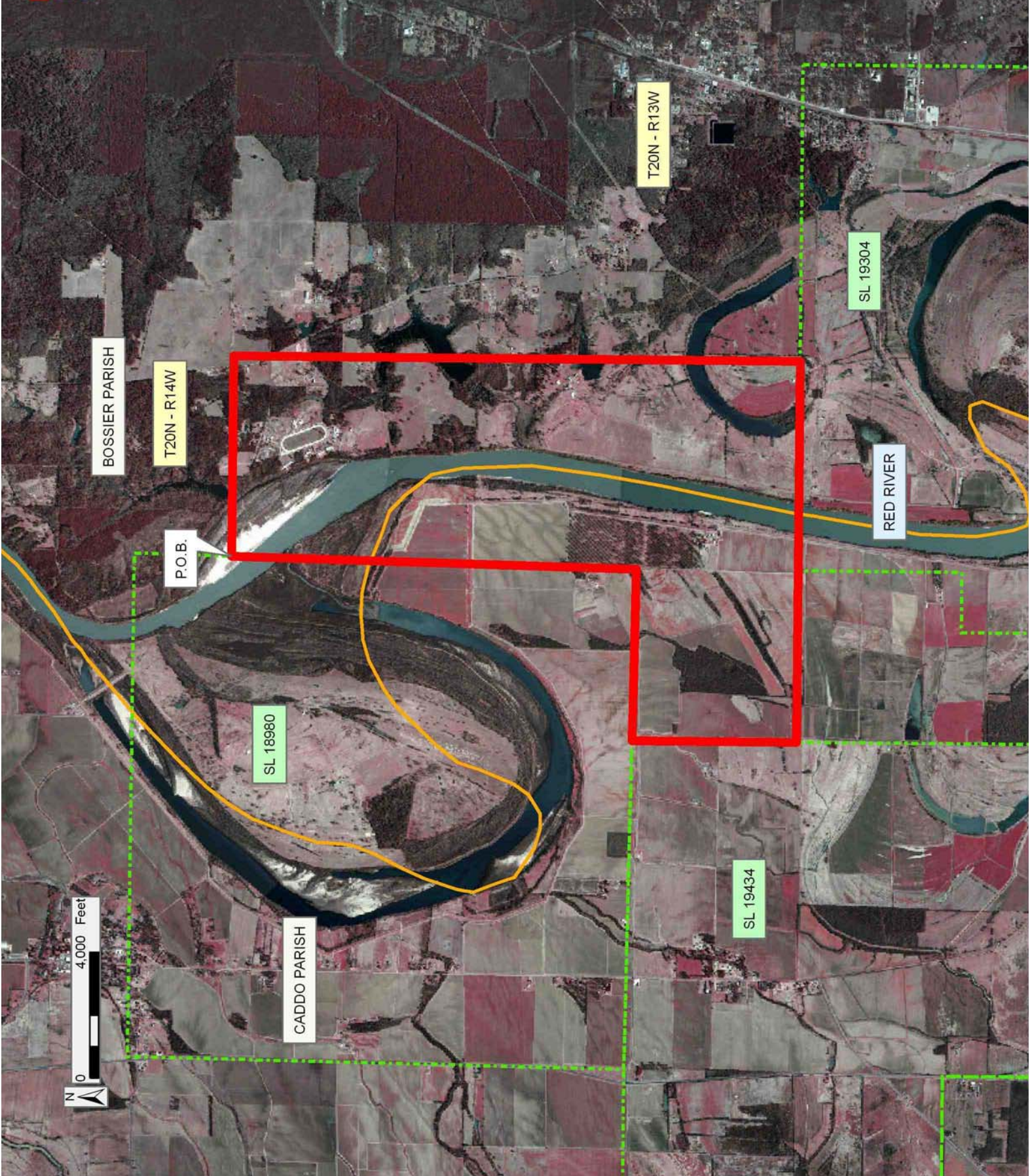
Applicant: LESLIE M. COOPER

Bidder	Cash Payment	Price/Acre	Rental	Oil	Gas	Other

Legend

-  08090139
-  Active_Leases
-  Counties

DOQQ2004



TRACT 40077 - Caddo Parish, Louisiana

All of the lands now or formerly constituting the beds and bottoms of all water bodies of every nature and description as to which title is vested in the State of Louisiana, together with all islands arising therein and other lands formed by accretion or by reliction, where allowed by law, excepting tax adjudicated lands, and not presently under mineral lease on September 10, 2008, situated in Caddo Parish, Louisiana, and more particularly described as follows: Beginning at a point having Coordinates of X = 1,532,725.00 and Y = 734,575.00; thence South 7,500.00 feet to a point having Coordinates of X = 1,532,725.00 and Y = 727,075.00; thence West 7,500.00 feet to a point having Coordinates of X = 1,525,225.00 and Y = 727,075.00; thence Northerly approximately 7,504 feet to a point being the Southwest corner of State Lease 173, as amended; thence Easterly approximately 1,058 feet to the Southernmost Southeast corner of said State Lease 173; thence approximately 6,417 feet to the point of beginning, **LESS AND EXCEPT** any portion of the above described tract that may lie within the boundaries of State Lease 173, (This lease includes only waterbottoms claimed and owned by the state and specifically excludes any land which the state may claim or own and to which the mineral rights are vested in the state), containing approximately containing approximately **270 acres**

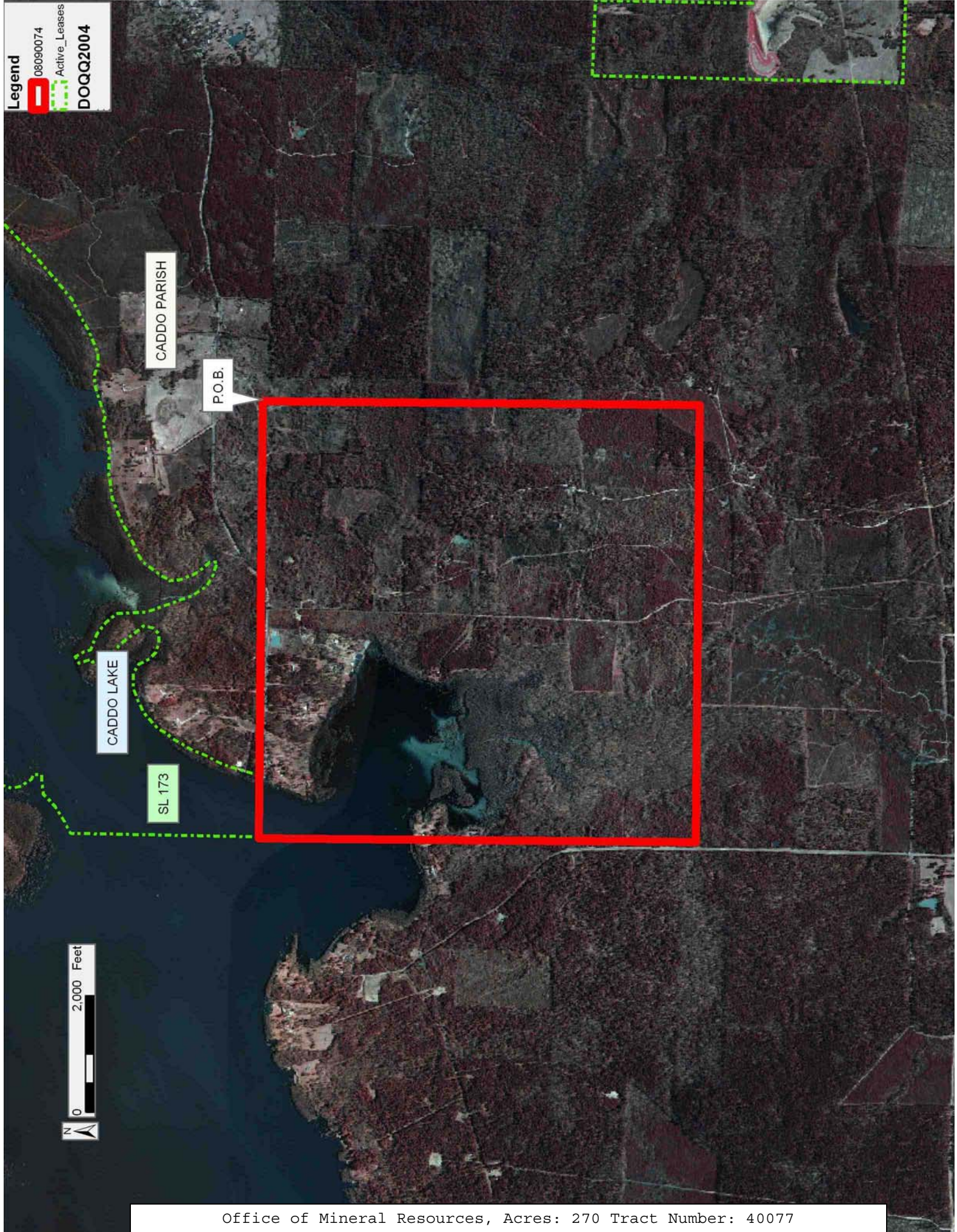
, **LESS AND EXCEPT** that portion thereof, if any, located West of the boundary line between the States of Texas and Louisiana as determined by the report of the Special Master and adjudicated by the Supreme Court of the United States in litigation styled **Texas v. Louisiana, et al No. 36 Original**, or as otherwise approved by said court, all as more particularly outlined on a plat on file in the Office of Mineral Resources, Department of Natural Resources. All bearings, distances and coordinates are based on Louisiana Coordinate System of 1927, (North or South Zone), where applicable.

NOTE: The above description of the Tract nominated for lease has been provided and corrected, where required, exclusively by the nomination party. Any mineral lease selected from this Tract and awarded by the Louisiana State Mineral Board shall be without warranty of any kind, either express, implied, or statutory, including, but not limited to, the implied warranties of merchantability and fitness for a particular purpose. Should the mineral lease awarded by the Louisiana State Mineral Board be subsequently modified, cancelled or abrogated due to the existence of conflicting leases, operating agreements, private claims or other future obligations or conditions which may affect all or any portion of the leased Tract, it shall not relieve the Lessee of the obligation to pay any bonus due thereon to the Louisiana State Mineral Board, nor shall the Louisiana State Mineral Board be obligated to refund any consideration paid by the Lessor prior to such modification, cancellation, or abrogation, including, but not limited to, bonuses, rentals and royalties.

Applicant: THEOPHILUS OIL GAS & LAND SERVICES, LLC

Bidder	Cash Payment	Price/Acre	Rental	Oil	Gas	Other

Legend
08090074
Active_Leases
DOQQ2004



CADDO PARISH

P.O.B.

CADDO LAKE

SL 173



TRACT 40078 - Bossier Parish, Louisiana

All of the lands now or formerly constituting the beds and bottoms of all water bodies of every nature and description as to which title is vested in the State of Louisiana, together with all islands arising therein and other lands formed by accretion or by reliction, where allowed by law, excepting tax adjudicated lands, and not presently under mineral lease on September 10, 2008, situated in Bossier Parish, Louisiana, and more particularly described as follows: Beginning at a point having Coordinates of X = 1,660,900.00 and Y = 731,780.00; thence East 16,150.00 feet to a point having Coordinates of X = 1,677,050.00 and Y = 731,780.00; thence South 15,800.00 feet to a point having Coordinates of X = 1,677,050.00 and Y = 715,980.00; thence West 16,150.00 feet to a point having Coordinates of X = 1,660,900.00 and Y = 715,980.00; thence North 15,800.00 feet to the point of beginning, (This tract includes only waterbottoms claimed and owned by the state and specifically excludes any land which the state may claim or own and to which the mineral rights are vested in the state), containing approximately **127 acres**, all as more particularly outlined on a plat on file in the Office of Mineral Resources, Department of Natural Resources. All bearings, distances and coordinates are based on Louisiana Coordinate System of 1927, (North or South Zone), where applicable.

NOTE: The above description of the Tract nominated for lease has been provided and corrected, where required, exclusively by the nomination party. Any mineral lease selected from this Tract and awarded by the Louisiana State Mineral Board shall be without warranty of any kind, either express, implied, or statutory, including, but not limited to, the implied warranties of merchantability and fitness for a particular purpose. Should the mineral lease awarded by the Louisiana State Mineral Board be subsequently modified, cancelled or abrogated due to the existence of conflicting leases, operating agreements, private claims or other future obligations or conditions which may affect all or any portion of the leased Tract, it shall not relieve the Lessee of the obligation to pay any bonus due thereon to the Louisiana State Mineral Board, nor shall the Louisiana State Mineral Board be obligated to refund any consideration paid by the Lessor prior to such modification, cancellation, or abrogation, including, but not limited to, bonuses, rentals and royalties.

Bidder	Cash Payment	Price/Acre	Rental	Oil	Gas	Other

Applicant: THEOPHILUS OIL GAS & LAND SERVICES, LLC

BAYOU BODCAU

BOSSIER PARISH

T20N - R12W

P.O.B.

T19N - R12W



TRACT 40079 - Bossier and Caddo Parishes, Louisiana

All of the lands now or formerly constituting the beds and bottoms of all water bodies of every nature and description as to which title is vested in the State of Louisiana, together with all islands arising therein and other lands formed by accretion or by reliction, where allowed by law, excepting tax adjudicated lands, and not presently under mineral lease on September 10, 2008, situated in Bossier and Caddo Parishes, Louisiana, and more particularly described as follows: Beginning at a point on the East boundary of State Lease No. 19304 having Coordinates of X = 1,618,500.00 and Y = 731,780.00; thence East 10,260.00 feet to a point having Coordinates of X = 1,628,760.00 and Y = 731,780.00; thence South 15,800.00 feet to a point having Coordinates of X = 1,628,760.00 and Y = 715,980.00; thence West 15,660.00 feet to a point having Coordinates of X = 1,613,100.00 and Y = 715,980.00; thence North approximately 5,926 feet to the Southeast corner of State Lease No. 19305; thence North approximately 4,892 feet along the East boundary of said State Lease No. 19305 to its Northeast corner located on the South boundary of said State Lease No. 19304 having Coordinates of X = 1,613,100.00 and Y = 726,800.00; thence along the South and East boundary of said State Lease No. 19304 the following courses and distances: East 5,400.00 feet to a corner having Coordinates of X = 1,618,500.00 and Y = 726,800.00 and North 4,980.00 feet to the point of beginning, **LESS AND EXCEPT** any portion of State Lease No. 2066 that may lie within the above described tract, containing approximately **48 acres**

, all as more particularly outlined on a plat on file in the Office of Mineral Resources, Department of Natural Resources. All bearings, distances and coordinates are based on Louisiana Coordinate System of 1927, (North or South Zone), where applicable.

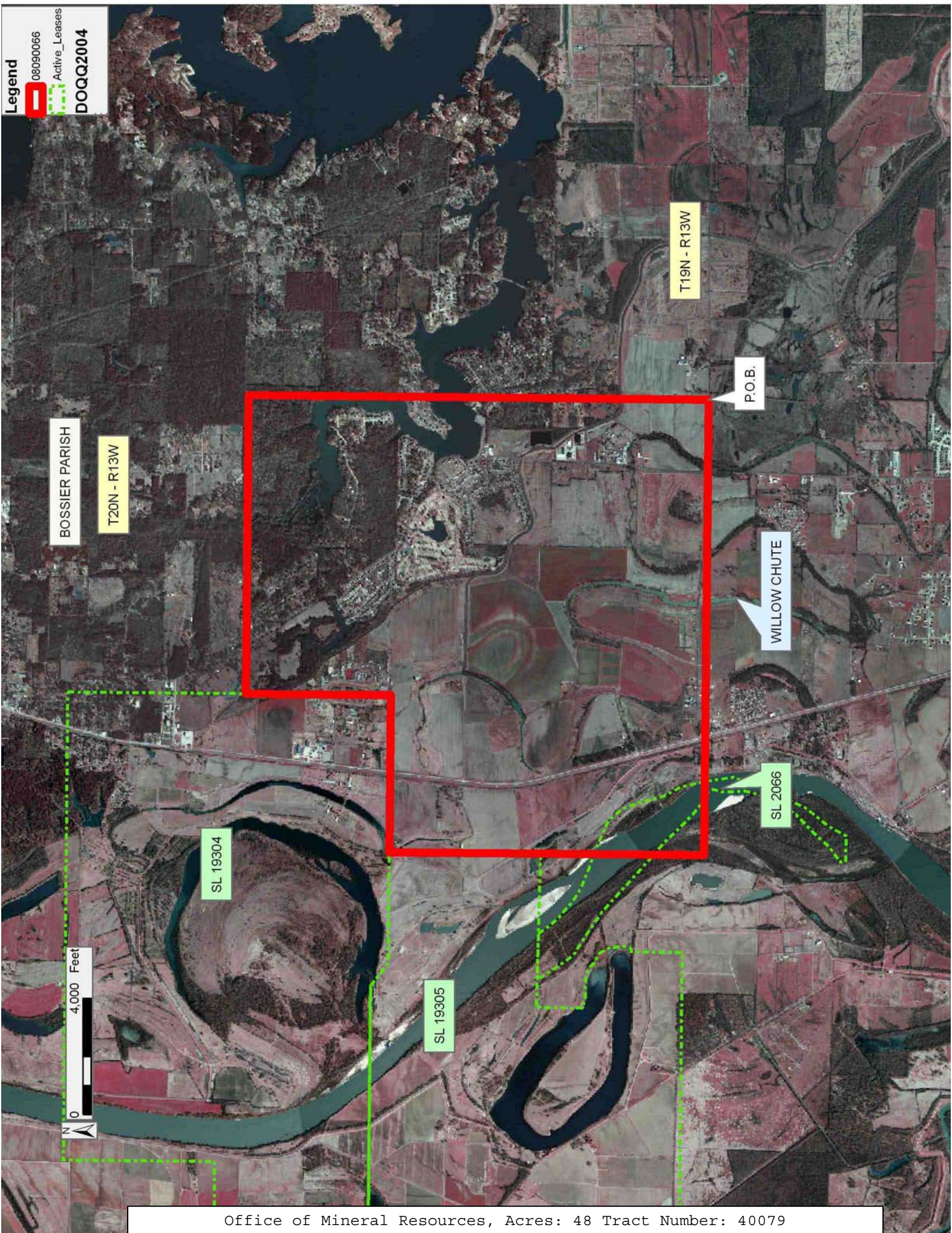
NOTE: The above description of the Tract nominated for lease has been provided and corrected, where required, exclusively by the nomination party. Any mineral lease selected from this Tract and awarded by the Louisiana State Mineral Board shall be without warranty of any kind, either express, implied, or statutory, including, but not limited to, the implied warranties of merchantability and fitness for a particular purpose. Should the mineral lease awarded by the Louisiana State Mineral Board be subsequently modified, cancelled or abrogated due to the existence of conflicting leases, operating agreements, private claims or other future obligations or conditions which may affect all or any portion of the leased Tract, it shall not relieve the Lessee of the obligation to pay any bonus due thereon to the Louisiana State Mineral Board, nor shall the Louisiana State Mineral Board be obligated to refund any consideration

paid by the Lessor prior to such modification, cancellation, or abrogation, including, but not limited to, bonuses, rentals and royalties.

Applicant: THEOPHILUS OIL, GAS & LAND SERVICES, LLC

Bidder	Cash Payment	Price/Acre	Rental	Oil	Gas	Other

Legend
08090066
Active_Leases
DOQQ2004



BOSSIER PARISH

T20N - R13W

T19N - R13W

P.O.B.

WILLOW CHUTE

SL 19304

SL 19305

SL 2066



TRACT 40080 - Webster Parish, Louisiana

All of the lands now or formerly constituting the beds and bottoms of all water bodies of every nature and description as to which title is vested in the State of Louisiana, together with all islands arising therein and other lands formed by accretion or by reliction, where allowed by law, excepting tax adjudicated lands, and not presently under mineral lease on September 10, 2008, situated in Webster Parish, Louisiana, and more particularly described as follows: Beginning at a point having Coordinates of X = 1,725,806.90 and Y = 730,862.50; thence East 15,700.00 feet to a point having Coordinates of X = 1,741,506.90 and Y = 730,862.50; thence South 16,300.00 feet to a point having Coordinates of X = 1,741,506.90 and Y = 714,562.50; thence West 15,700.00 feet to a point having Coordinates of X = 1,725,806.90 and Y = 714,562.50; thence North 16,300.00 feet to the point of beginning, containing approximately **17 acres**, all as more particularly outlined on a plat on file in the Office of Mineral Resources, Department of Natural Resources. All bearings, distances and coordinates are based on Louisiana Coordinate System of 1927, (North or South Zone), where applicable.

NOTE: The above description of the Tract nominated for lease has been provided and corrected, where required, exclusively by the nomination party. Any mineral lease selected from this Tract and awarded by the Louisiana State Mineral Board shall be without warranty of any kind, either express, implied, or statutory, including, but not limited to, the implied warranties of merchantability and fitness for a particular purpose. Should the mineral lease awarded by the Louisiana State Mineral Board be subsequently modified, cancelled or abrogated due to the existence of conflicting leases, operating agreements, private claims or other future obligations or conditions which may affect all or any portion of the leased Tract, it shall not relieve the Lessee of the obligation to pay any bonus due thereon to the Louisiana State Mineral Board, nor shall the Louisiana State Mineral Board be obligated to refund any consideration paid by the Lessor prior to such modification, cancellation, or abrogation, including, but not limited to, bonuses, rentals and royalties.

NOTE: The above Tract is located upon a restricted scenic river and all operations in this area must be conducted in strict conformity with the regulations of the Corps of Engineers, U.S. Army.

Applicant: THEOPHILUS OIL GAS & LAND SERVICES, LLC

Bidder	Cash Payment	Price/Acre	Rental	Oil	Gas	Other



WEBSTER PARISH

T20N - R10W

P.O.B.



T19N - R10W

BAYOU DORCHEAT

TRACT 40081 - Webster Parish, Louisiana

All of the lands now or formerly constituting the beds and bottoms of all water bodies of every nature and description as to which title is vested in the State of Louisiana, together with all islands arising therein and other lands formed by accretion or by reliction, where allowed by law, excepting tax adjudicated lands, and not presently under mineral lease on September 10, 2008, situated in Webster Parish, Louisiana, and more particularly described as follows: Beginning at a point having Coordinates of X = 1,741,506.90 and Y = 730,862.50; thence East 15,700.00 feet to a point having Coordinates of X = 1,757,206.90 and Y = 730,862.50; thence South 16,300.00 feet to a point having Coordinates of X = 1,757,206.90 and Y = 714,562.50; thence West 15,700.00 feet to a point having Coordinates of X = 1,741,506.90 and Y = 714,562.50; thence North 16,300.00 feet to the point of beginning, (This lease includes only waterbottoms claimed and owned by the state and specifically excludes any land which the state may claim or own and to which the mineral rights are vested in the state), containing approximately **14 acres**, all as more particularly outlined on a plat on file in the Office of Mineral Resources, Department of Natural Resources. All bearings, distances and coordinates are based on Louisiana Coordinate System of 1927, (North or South Zone), where applicable.

NOTE: The above description of the Tract nominated for lease has been provided and corrected, where required, exclusively by the nomination party. Any mineral lease selected from this Tract and awarded by the Louisiana State Mineral Board shall be without warranty of any kind, either express, implied, or statutory, including, but not limited to, the implied warranties of merchantability and fitness for a particular purpose. Should the mineral lease awarded by the Louisiana State Mineral Board be subsequently modified, cancelled or abrogated due to the existence of conflicting leases, operating agreements, private claims or other future obligations or conditions which may affect all or any portion of the leased Tract, it shall not relieve the Lessee of the obligation to pay any bonus due thereon to the Louisiana State Mineral Board, nor shall the Louisiana State Mineral Board be obligated to refund any consideration paid by the Lessor prior to such modification, cancellation, or abrogation, including, but not limited to, bonuses, rentals and royalties.

NOTE: The above Tract is located upon a restricted scenic river and all operations in this area must be conducted in strict conformity with the regulations of the Corps of Engineers, U.S. Army.

Applicant: THEOPHILUS OIL GAS & LAND SERVICES, LLC

Bidder	Cash Payment	Price/Acre	Rental	Oil	Gas	Other

Legend
08090076
Active_Leases
DOQQ2004

WEBSTER PARISH

T20N - R9W

P.O.B.

BAYOU DORCHEAT

T19N - R10W



TRACT 40082 - Bossier and Caddo Parishes, Louisiana

All of the lands now or formerly constituting the beds and bottoms of all water bodies of every nature and description as to which title is vested in the State of Louisiana, together with all islands arising therein and other lands formed by accretion or by reliction, where allowed by law, excepting tax adjudicated lands, and not presently under mineral lease on September 10, 2008, situated in Bossier and Caddo Parishes, Louisiana, and more particularly described as follows: Beginning at a point having Coordinates of X = 1,613,100.00 and Y = 715,980.00; thence West 3,339.19 feet to a point having Coordinates of X = 1,609,760.81 and Y = 715,980.00; thence North approximately 720 feet to the Southeast corner of State Lease No. 19305; thence Northerly approximately 2,621 feet to the mean low water mark of Gold Point Lake; thence along the mean low water mark of Gold Point Lake, the following courses: Northwesterly and Westerly; thence Northerly approximately 1,753 feet along the West line of Section 13, Township 19 North, Range 14 West to its Northwest corner; thence Easterly approximately 807 feet along the North line of said Section 13 to the Northwest corner of State Lease No. 2066, as amended; thence Easterly approximately 1,488 feet along the North line of said State Lease No. 2066, as amended, to its Northeast corner, said corner being a point on the North line of said Section 13; thence Easterly approximately 2,981 feet along the North line of said Section 13 to its Northeast corner; thence South approximately 5,615 feet to the point of beginning, **LESS AND EXCEPT** any portion of State Lease No. 2066 that may lie within the above described tract, containing approximately **45 acres**

, all as more particularly outlined on a plat on file in the Office of Mineral Resources, Department of Natural Resources. All bearings, distances and coordinates are based on Louisiana Coordinate System of 1927, (North or South Zone), where applicable.

NOTE: The above description of the Tract nominated for lease has been provided and corrected, where required, exclusively by the nomination party. Any mineral lease selected from this Tract and awarded by the Louisiana State Mineral Board shall be without warranty of any kind, either express, implied, or statutory, including, but not limited to, the implied warranties of merchantability and fitness for a particular purpose. Should the mineral lease awarded by the Louisiana State Mineral Board be subsequently modified, cancelled or abrogated due to the

existence of conflicting leases, operating agreements, private claims or other future obligations or conditions which may affect all or any portion of the leased Tract, it shall not relieve the Lessee of the obligation to pay any bonus due thereon to the Louisiana State Mineral Board, nor shall the Louisiana State Mineral Board be obligated to refund any consideration paid by the Lessor prior to such modification, cancellation, or abrogation, including, but not limited to, bonuses, rentals and royalties.

Applicant: THEOPHILUS OIL, GAS & LAND SERVICES, LLC

Bidder	Cash Payment	Price/Acre	Rental	Oil	Gas	Other

Legend

- ▬ 08090162
- ⋯ Active_Leases
- ▬ Counties

DOQQ2004

BOSSIER PARISH

T19N - R13W

SL 2066

P.O.B.

RED RIVER

GOLD POINT LAKE

SL 19305

CADDO PARISH

T19N - R14W

2,000 Feet



TRACT 40083 - Bossier Parish, Louisiana

All of the lands now or formerly constituting the beds and bottoms of all water bodies of every nature and description as to which title is vested in the State of Louisiana, together with all islands arising therein and other lands formed by accretion or by reliction, where allowed by law, excepting tax adjudicated lands, and not presently under mineral lease on September 10, 2008, situated in Bossier Parish, Louisiana, and more particularly described as follows: Beginning at a point having Coordinates of X = 1,628,760.00 and Y = 715,980.00: thence East 15,990.00 feet to a point having Coordinates of X = 1,644,750.00 and Y = 715,980.00; thence South 15,680.00 feet to a point having Coordinates of X = 1,644,750.00 and Y = 700,300.00; thence West 15,990.00 feet to a point having Coordinates of X = 1,628,760.00 and Y = 700,300.00; thence North 15,680.00 feet to the point of beginning, containing approximately **28 acres**, all as more particularly outlined on a plat on file in the Office of Mineral Resources, Department of Natural Resources. All bearings, distances and coordinates are based on Louisiana Coordinate System of 1927, (North or South Zone), where applicable.

NOTE: The above description of the Tract nominated for lease has been provided and corrected, where required, exclusively by the nomination party. Any mineral lease selected from this Tract and awarded by the Louisiana State Mineral Board shall be without warranty of any kind, either express, implied, or statutory, including, but not limited to, the implied warranties of merchantability and fitness for a particular purpose. Should the mineral lease awarded by the Louisiana State Mineral Board be subsequently modified, cancelled or abrogated due to the existence of conflicting leases, operating agreements, private claims or other future obligations or conditions which may affect all or any portion of the leased Tract, it shall not relieve the Lessee of the obligation to pay any bonus due thereon to the Louisiana State Mineral Board, nor shall the Louisiana State Mineral Board be obligated to refund any consideration paid by the Lessor prior to such modification, cancellation, or abrogation, including, but not limited to, bonuses, rentals and royalties.

Applicant: THEOPHILUS OIL GAS & LAND SERVICES, LLC

Bidder	Cash Payment	Price/Acre	Rental	Oil	Gas	Other

BOSSIER PARISH

T19N - R13W

T18N - R13W

P.O.B.

WILLOW CHUTE



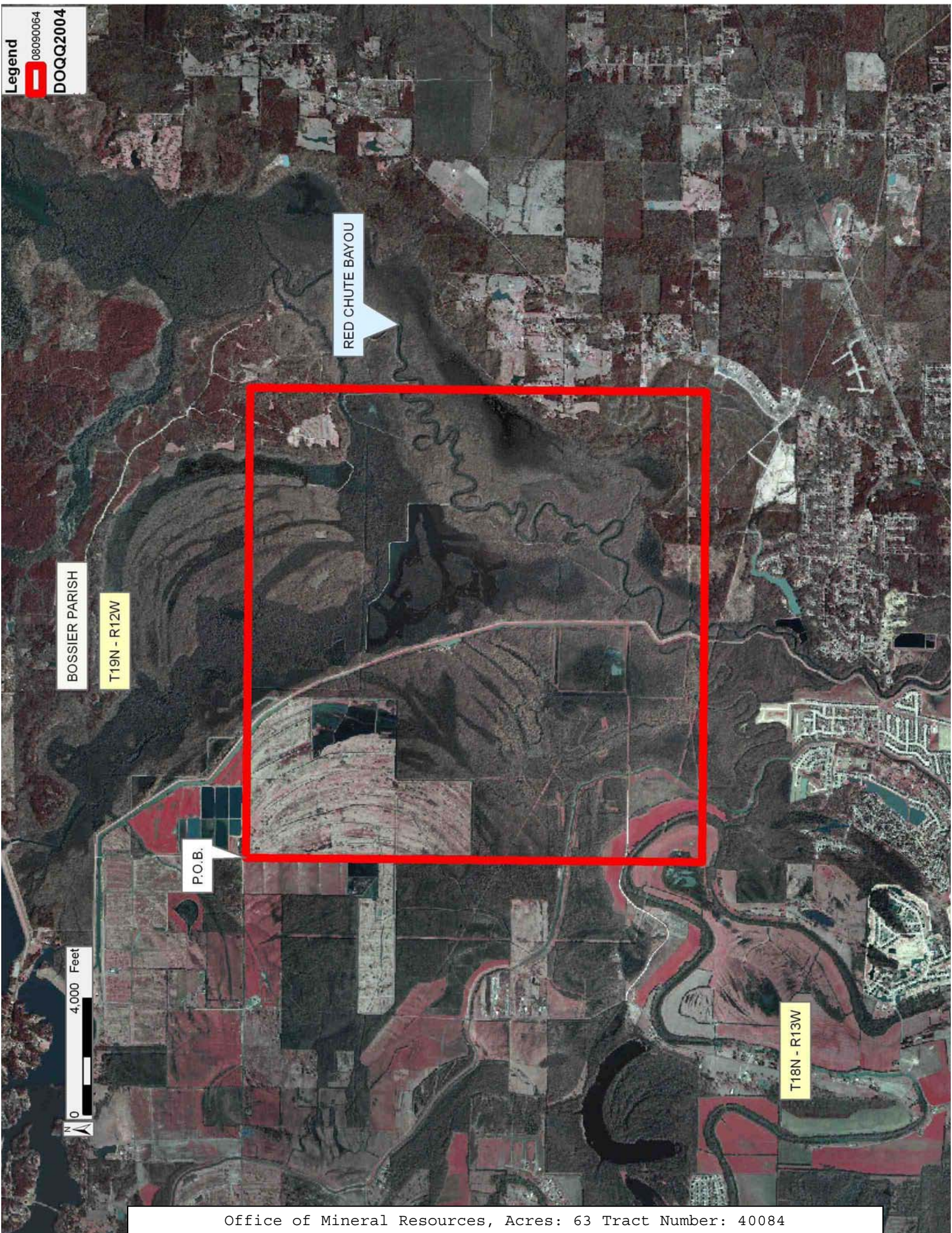
TRACT 40084 - Bossier Parish, Louisiana

All of the lands now or formerly constituting the beds and bottoms of all water bodies of every nature and description as to which title is vested in the State of Louisiana, together with all islands arising therein and other lands formed by accretion or by reliction, where allowed by law, excepting tax adjudicated lands, and not presently under mineral lease on September 10, 2008, situated in Bossier Parish, Louisiana, and more particularly described as follows: Beginning at a point having Coordinates of X = 1,644,750.00 and Y = 715,980.00; thence East 16,150.00 feet to a point having Coordinates of X = 1,660,900.00 and Y = 715,980.00; thence South 15,680.00 feet to a point having Coordinates of X = 1,660,900.00 and Y = 700,300.00; thence West 16,150.00 feet to a point having Coordinates of X = 1,644,750.00 and Y = 700,300.00; thence North 15,680.00 feet to the point of beginning, (This tract includes only waterbottoms claimed and owned by the state and specifically excludes any land which the state may claim or own and to which the mineral rights are vested in the state), containing approximately **63 acres**, all as more particularly outlined on a plat on file in the Office of Mineral Resources, Department of Natural Resources. All bearings, distances and coordinates are based on Louisiana Coordinate System of 1927, (North or South Zone), where applicable.

NOTE: The above description of the Tract nominated for lease has been provided and corrected, where required, exclusively by the nomination party. Any mineral lease selected from this Tract and awarded by the Louisiana State Mineral Board shall be without warranty of any kind, either express, implied, or statutory, including, but not limited to, the implied warranties of merchantability and fitness for a particular purpose. Should the mineral lease awarded by the Louisiana State Mineral Board be subsequently modified, cancelled or abrogated due to the existence of conflicting leases, operating agreements, private claims or other future obligations or conditions which may affect all or any portion of the leased Tract, it shall not relieve the Lessee of the obligation to pay any bonus due thereon to the Louisiana State Mineral Board, nor shall the Louisiana State Mineral Board be obligated to refund any consideration paid by the Lessor prior to such modification, cancellation, or abrogation, including, but not limited to, bonuses, rentals and royalties.

Bidder	Cash Payment	Price/Acre	Rental	Oil	Gas	Other

Applicant: THEOPHILUS OIL GAS & LAND SERVICES, LLC



TRACT 40085 - Bossier Parish, Louisiana

All of the lands now or formerly constituting the beds and bottoms of all water bodies of every nature and description as to which title is vested in the State of Louisiana, together with all islands arising therein and other lands formed by accretion or by reliction, where allowed by law, excepting tax adjudicated lands, and not presently under mineral lease on September 10, 2008, situated in Bossier Parish, Louisiana, and more particularly described as follows: Beginning at a point having Coordinates of X = 1,660,900.00 and Y = 715,980.00; thence East 16,150.00 feet to a point having Coordinates of X = 1,677,050.00 and Y = 715,980.00; thence South 15,680.00 feet to a point having Coordinates of X = 1,677,050.00 and Y = 700,300.00; thence West 16,150.00 feet to a point having Coordinates of X = 1,660,900.00 and Y = 700,300.00; thence North 15,680.00 feet to the point of beginning, (This tract includes only waterbottoms claimed and owned by the state and specifically excludes any land which the state may claim or own and to which the mineral rights are vested in the state), containing approximately **22 acres**, all as more particularly outlined on a plat on file in the Office of Mineral Resources, Department of Natural Resources. All bearings, distances and coordinates are based on Louisiana Coordinate System of 1927, (North or South Zone), where applicable.

NOTE: The above description of the Tract nominated for lease has been provided and corrected, where required, exclusively by the nomination party. Any mineral lease selected from this Tract and awarded by the Louisiana State Mineral Board shall be without warranty of any kind, either express, implied, or statutory, including, but not limited to, the implied warranties of merchantability and fitness for a particular purpose. Should the mineral lease awarded by the Louisiana State Mineral Board be subsequently modified, cancelled or abrogated due to the existence of conflicting leases, operating agreements, private claims or other future obligations or conditions which may affect all or any portion of the leased Tract, it shall not relieve the Lessee of the obligation to pay any bonus due thereon to the Louisiana State Mineral Board, nor shall the Louisiana State Mineral Board be obligated to refund any consideration paid by the Lessor prior to such modification, cancellation, or abrogation, including, but not limited to, bonuses, rentals and royalties.

Bidder	Cash Payment	Price/Acre	Rental	Oil	Gas	Other

Applicant: THEOPHILUS OIL GAS & LAND SERVICES, LLC

Legend
08090063
Active_Leases
DOQQ2004

BOSSIER PARISH

T19N - R12W

T18N - R12W



P.O.B.

RED CHUTE BAYOU