

TRACT 39365 - St. Mary and Terrebonne Parishes, Louisiana

All of the lands now or formerly constituting the beds and bottoms of all water bodies of every nature and description as to which title is vested in the State of Louisiana, together with all islands arising therein and other lands formed by accretion or by reliction, where allowed by law, excepting tax adjudicated lands, and not presently under mineral lease on September 12, 2007, situated in St. Mary and Terrebonne Parishes, Louisiana, and more particularly described as follows: Beginning at a point having Coordinates of X = 2,043,211.50 and Y = 337,020.23; thence South 54 degrees 26 minutes 35 seconds West 3,938.37 feet to a point having Coordinates of X = 2,040,007.48 and Y = 334,730.03; thence North 5,218.45 feet to a point having Coordinates of X = 2,040,007.48 and Y = 339,948.48; thence North 54 degrees 26 minutes 35 seconds East 3,938.37 feet to a point having Coordinates of X = 2,043,211.50 and Y = 342,238.68; thence South 5,218.45 feet to the Point of Beginning, containing approximately **110.85 acres**, all as more particularly outlined on a plat on file in the Office of Mineral Resources, Department of Natural Resources. All bearings, distances and coordinates are based on Louisiana Coordinate System of 1927, (North or South Zone), where applicable.

NOTE: The above description of the Tract nominated for lease has been provided and corrected, where required, exclusively by the nomination party. Any mineral lease selected from this Tract and awarded by the Louisiana State Mineral Board shall be without warranty of any kind, either express, implied, or statutory, including, but not limited to, the implied warranties of merchantability and fitness for a particular purpose. Should the mineral lease awarded by the Louisiana State Mineral Board be subsequently modified, cancelled or abrogated due to the existence of conflicting leases, operating agreements, private claims or other future obligations or conditions which may affect all or any portion of the leased Tract, it shall not relieve the Lessee of the obligation to pay any bonus due thereon to the Louisiana State Mineral Board, nor shall the Louisiana State Mineral Board be obligated to refund any consideration paid by the Lessor prior to such modification, cancellation, or abrogation, including, but not limited to, bonuses, rentals and royalties.

NOTE: The acreage contained herein, being a portion of State Lease 335, 340 or 341, was subject to the litigation between Texas, Inc. and the State of Louisiana which resulted in the Global Settlement Agreement compromise whereby this acreage was reassigned through various mesne conveyances to the successors of William T. Burton, the original lessee of said leases from the State, (hereinafter otherwise referred to as the "ORRO's) and approved by the State Mineral Board, becoming effective April 25, 1994. Under separate agreement by and between the State and the ORRO's, certain obligations were to be met within a specified time frame or the ORRO's became obligated to release the reassigned acreage back to the State. The obligations were not met within the specified time frame and the State began securing the releases for the acreage contained herein. Due to the extremely large number of ORRO's, their nationwide and

worldwide dispersal, the unreliability of available contact information and/or a present inability to obtain full, requisite cooperation, the State has, as yet, not secured releases from certain ORRO's representing approximately a .0258336 interest in this acreage. Accordingly, although the State is diligently pursuing the requisite releases affecting this acreage (the furnishing of which the ORRO's representing the stated decimal interest are obligated), nevertheless, a party obtaining a mineral lease from the State of Louisiana on the acreage contained herein shall do so with full knowledge that a complete release of all specific ORRO interest in this acreage has not as yet been secured and shall assume a business risk commensurate with the unsecured interest release.

NOTE: The State of Louisiana does hereby reserve, and this lease shall be subject to, the imprescriptible right of surface use in the nature of a servitude in favor of the Department of Natural Resources, including its Offices and Commissions, for the sole purpose of implementing, constructing, servicing and maintaining approved coastal zone management and/or restoration projects. Utilization of any and all rights derived under this lease by the mineral lessee, its agents, successors or assigns, shall not interfere with nor hinder the reasonable surface use by the Department of Natural Resources, its Offices or Commissions, as herein above reserved.

Applicant: LAND MANAGEMENT SERVICES, L.L.C.

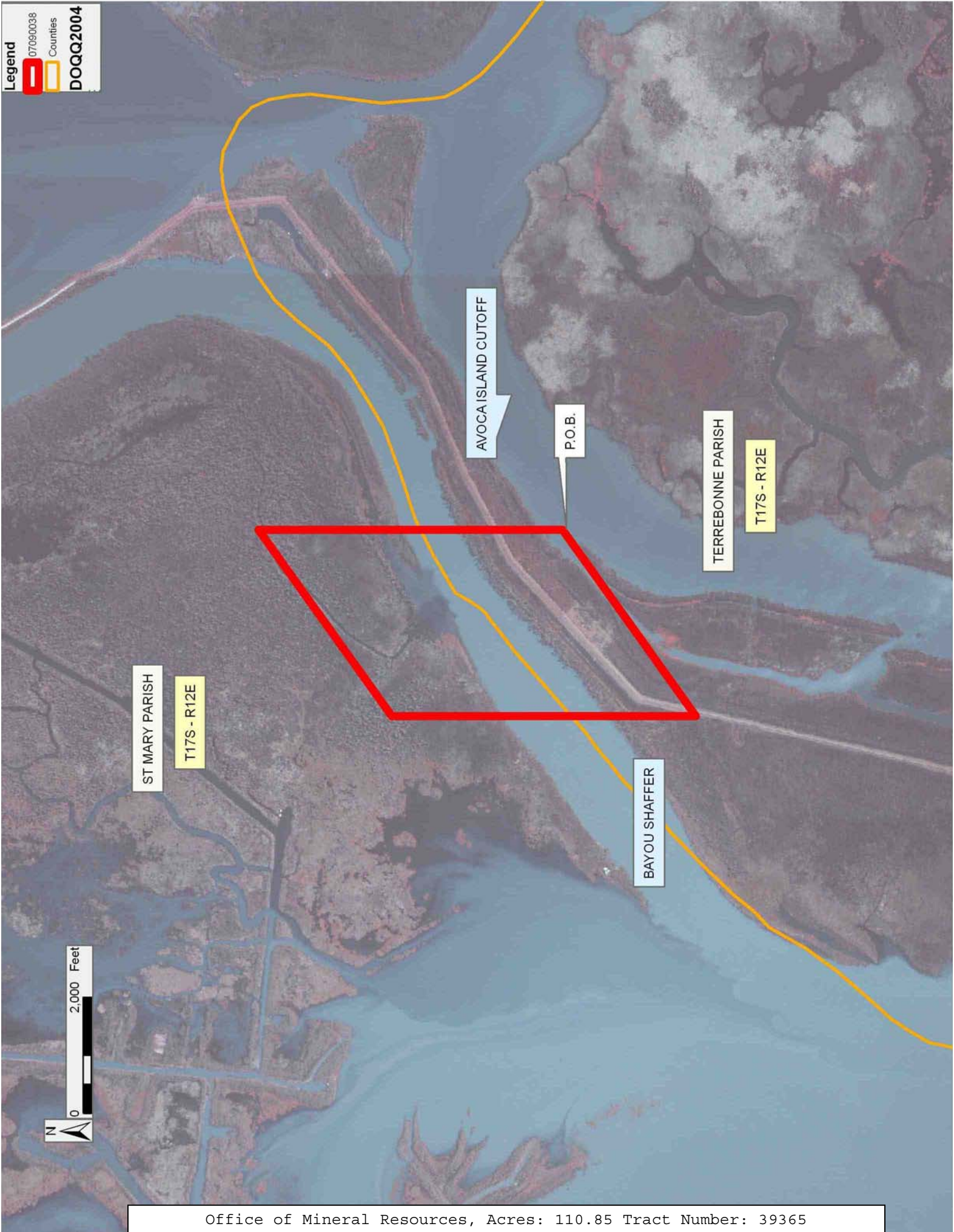
Bidder	Cash Payment	Price/ Acre	Rental	Oil	Gas	Other

Legend

 070900038

 Counties

DOQQ2004



TRACT 39366 - Jefferson and Lafourche Parishes, Louisiana

All of the lands now or formerly constituting the beds and bottoms of all water bodies of every nature and description as to which title is vested in the State of Louisiana, together with all islands arising therein and other lands formed by accretion or by reliction, where allowed by law, excepting tax adjudicated lands, and not presently under mineral lease on September 12, 2007, situated in Jefferson and Lafourche Parishes, Louisiana, and more particularly described as follows: Beginning at a Point having Coordinates of X = 2,373,070.00 and Y = 314,180.00; Thence South 5,500.00 feet to a point having Coordinates of X = 2,373,070.00 and Y = 308,680.00; Thence West 2,500.00 feet to a point having Coordinates of X = 2,370,570.00 and Y = 308,680.00; Thence North 5,500.00 feet to a point having Coordinates of X = 2,370,570.00 and Y = 314,180.00; Thence East 2,500.00 feet to the point of beginning, containing **315.66 acres**, all as more particularly outlined on a plat on file in the Office of Mineral Resources, Department of Natural Resources. All bearings, distances and coordinates are based on Louisiana Coordinate System of 1927, (North or South Zone), where applicable.

NOTE: The above description of the Tract nominated for lease has been provided and corrected, where required, exclusively by the nomination party. Any mineral lease selected from this Tract and awarded by the Louisiana State Mineral Board shall be without warranty of any kind, either express, implied, or statutory, including, but not limited to, the implied warranties of merchantability and fitness for a particular purpose. Should the mineral lease awarded by the Louisiana State Mineral Board be subsequently modified, cancelled or abrogated due to the existence of conflicting leases, operating agreements, private claims or other future obligations or conditions which may affect all or any portion of the leased Tract, it shall not relieve the Lessee of the obligation to pay any bonus due thereon to the Louisiana State Mineral Board, nor shall the Louisiana State Mineral Board be obligated to refund any consideration paid by the Lessor prior to such modification, cancellation, or abrogation, including, but not limited to, bonuses, rentals and royalties.

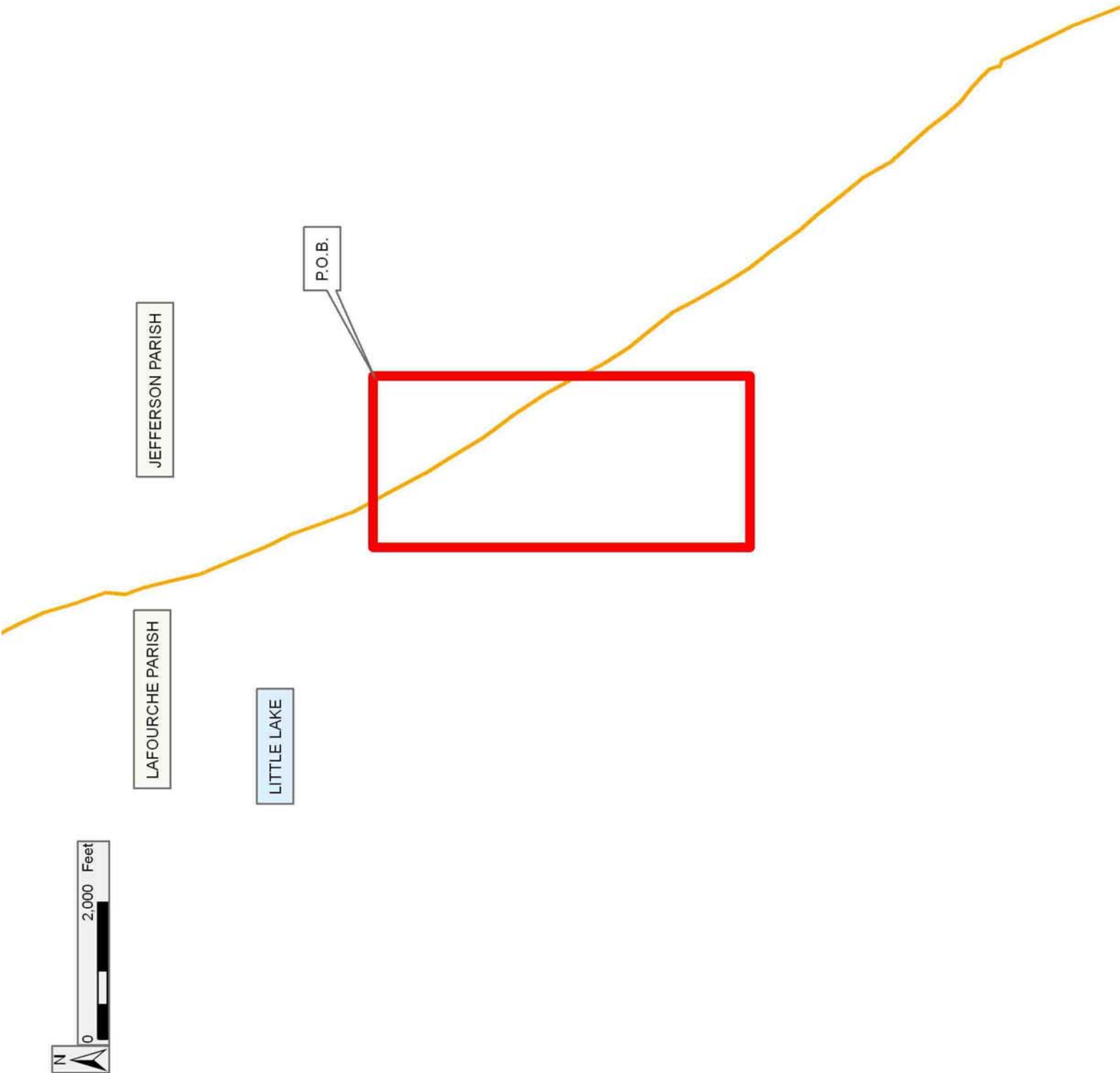
NOTE: The State of Louisiana does hereby reserve, and this lease shall be subject to, the imprescriptible right of surface use in the nature of a servitude in favor of the Department of Natural Resources, including its Offices and Commissions, for the sole purpose of implementing, constructing, servicing and maintaining approved coastal zone management and/or restoration projects. Utilization of any and all rights derived under this lease by the mineral lessee, its agents, successors or assigns, shall not interfere with nor hinder the reasonable surface use by the Department of Natural Resources, its Offices or Commissions, as herein above reserved.

NOTE: The Department of Wildlife and Fisheries has designated certain areas in the coastal waters of the State of Louisiana as Oyster Seed Bed Areas. The exact location of those Seed Bed Areas must be obtained from

the Department of Wildlife and Fisheries and any work done under a mineral lease from the State of Louisiana may necessarily be conducted in conformity with the rules and regulations promulgated by the said Department of Wildlife and Fisheries for Oyster Seed Bed Areas.

Applicant: SOUTHERN OIL & GAS COMPANY, INC.

Bidder	Cash Payment	Price/ Acre	Rental	Oil	Gas	Other



TRACT 39367 - Jefferson and Lafourche Parishes, Louisiana

All of the lands now or formerly constituting the beds and bottoms of all water bodies of every nature and description as to which title is vested in the State of Louisiana, together with all islands arising therein and other lands formed by accretion or by reliction, where allowed by law, excepting tax adjudicated lands, and not presently under mineral lease on September 12, 2007, situated in Jefferson and Lafourche Parishes, Louisiana, and more particularly described as follows: Beginning at a Point having Coordinates of X = 2,373,070.00 and Y = 314,180.00; Thence East 2,500.00 feet to a point having Coordinates of X = 2,375,570.00 and Y = 314,180.00; Thence South 5,500.00 feet to a point having Coordinates of X = 2,375,570.00 and Y = 308,680.00; Thence West 2,500.00 feet to a point having Coordinates of X = 2,373,070.00 and Y = 308,680.00; Thence North 5,500.00 feet to the point of beginning, containing **315.66 acres**, all as more particularly outlined on a plat on file in the Office of Mineral Resources, Department of Natural Resources. All bearings, distances and coordinates are based on Louisiana Coordinate System of 1927, (North or South Zone), where applicable.

NOTE: The above description of the Tract nominated for lease has been provided and corrected, where required, exclusively by the nomination party. Any mineral lease selected from this Tract and awarded by the Louisiana State Mineral Board shall be without warranty of any kind, either express, implied, or statutory, including, but not limited to, the implied warranties of merchantability and fitness for a particular purpose. Should the mineral lease awarded by the Louisiana State Mineral Board be subsequently modified, cancelled or abrogated due to the existence of conflicting leases, operating agreements, private claims or other future obligations or conditions which may affect all or any portion of the leased Tract, it shall not relieve the Lessee of the obligation to pay any bonus due thereon to the Louisiana State Mineral Board, nor shall the Louisiana State Mineral Board be obligated to refund any consideration paid by the Lessor prior to such modification, cancellation, or abrogation, including, but not limited to, bonuses, rentals and royalties.

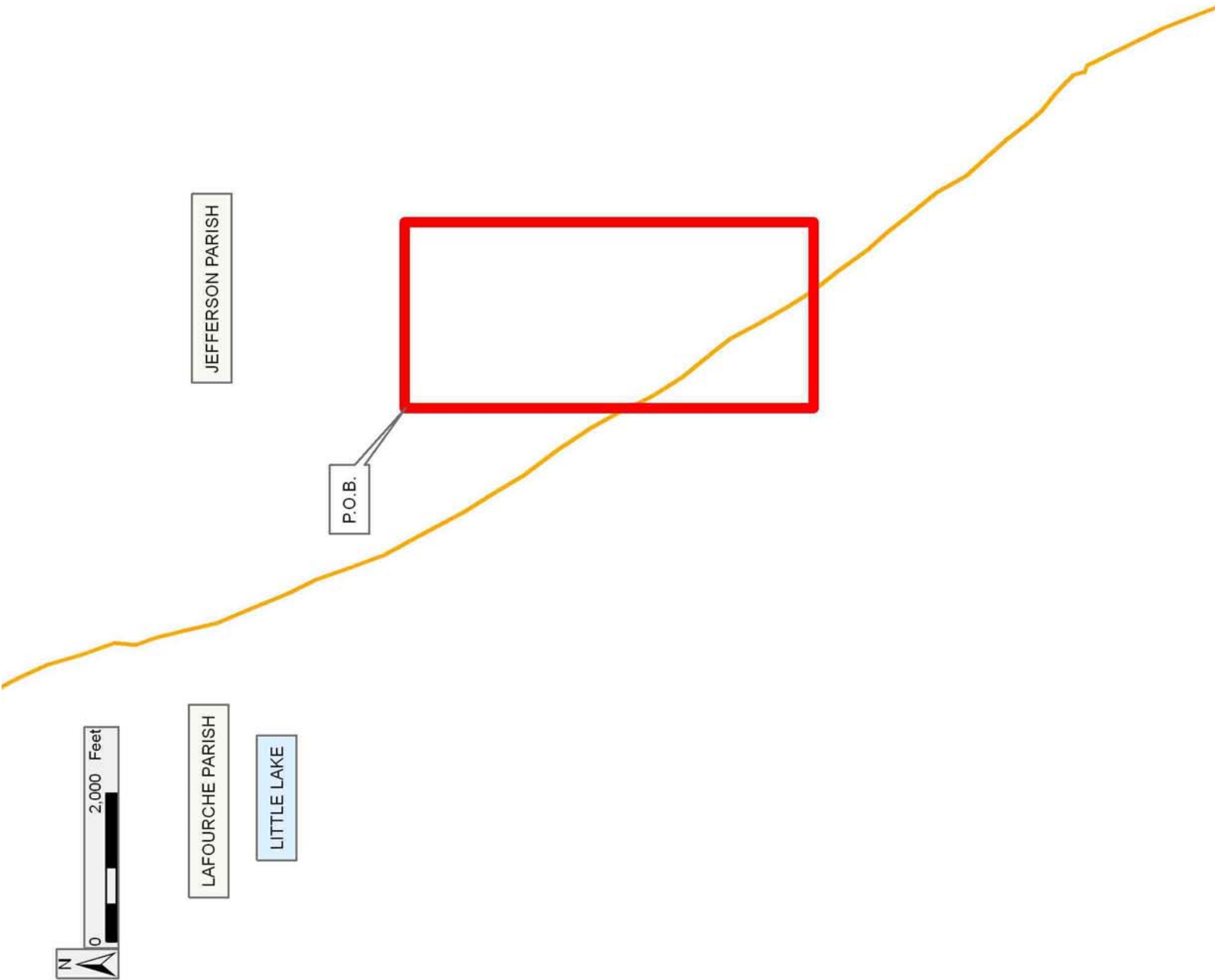
NOTE: The State of Louisiana does hereby reserve, and this lease shall be subject to, the imprescriptible right of surface use in the nature of a servitude in favor of the Department of Natural Resources, including its Offices and Commissions, for the sole purpose of implementing, constructing, servicing and maintaining approved coastal zone management and/or restoration projects. Utilization of any and all rights derived under this lease by the mineral lessee, its agents, successors or assigns, shall not interfere with nor hinder the reasonable surface use by the Department of Natural Resources, its Offices or Commissions, as herein above reserved.

NOTE: The Department of Wildlife and Fisheries has designated certain areas in the coastal waters of the State of Louisiana as Oyster Seed Bed Areas. The exact location of those Seed Bed Areas must be obtained from

the Department of Wildlife and Fisheries and any work done under a mineral lease from the State of Louisiana may necessarily be conducted in conformity with the rules and regulations promulgated by the said Department of Wildlife and Fisheries for Oyster Seed Bed Areas.

Applicant: SOUTHERN OIL & GAS COMPANY, INC.

Bidder	Cash Payment	Price/ Acre	Rental	Oil	Gas	Other



TRACT 39368 - Jefferson Parish, Louisiana

All of the lands now or formerly constituting the beds and bottoms of all water bodies of every nature and description as to which title is vested in the State of Louisiana, together with all islands arising therein and other lands formed by accretion or by reliction, where allowed by law, excepting tax adjudicated lands, and not presently under mineral lease on September 12, 2007, situated in Jefferson Parish, Louisiana, and more particularly described as follows: Beginning at a Point having Coordinates of X = 2,375,570.00 and Y = 314,180.00; Thence East 1,704.50 feet to a point on the West line of State Lease No. 18010 having Coordinates of X = 2,377,274.50 and Y = 314,180.00; Thence South 04 degrees 19 minutes 03 seconds West 5,515.65 feet along the West line of said State Lease No. 18010 to it's Southwest corner having Coordinates of X = 2,376,859.26 and Y = 308,680.00; Thence West 1,289.26 feet to a point having Coordinates of X = 2,375,570.00 and Y = 308,680.00; Thence North 5,500.00 feet to the point of beginning, containing approximately **182 acres**, all as more particularly outlined on a plat on file in the Office of Mineral Resources, Department of Natural Resources. All bearings, distances and coordinates are based on Louisiana Coordinate System of 1927, (North or South Zone), where applicable.

NOTE: The above description of the Tract nominated for lease has been provided and corrected, where required, exclusively by the nomination party. Any mineral lease selected from this Tract and awarded by the Louisiana State Mineral Board shall be without warranty of any kind, either express, implied, or statutory, including, but not limited to, the implied warranties of merchantability and fitness for a particular purpose. Should the mineral lease awarded by the Louisiana State Mineral Board be subsequently modified, cancelled or abrogated due to the existence of conflicting leases, operating agreements, private claims or other future obligations or conditions which may affect all or any portion of the leased Tract, it shall not relieve the Lessee of the obligation to pay any bonus due thereon to the Louisiana State Mineral Board, nor shall the Louisiana State Mineral Board be obligated to refund any consideration paid by the Lessor prior to such modification, cancellation, or abrogation, including, but not limited to, bonuses, rentals and royalties.

NOTE: The State of Louisiana does hereby reserve, and this lease shall be subject to, the imprescriptible right of surface use in the nature of a servitude in favor of the Department of Natural Resources, including its Offices and Commissions, for the sole purpose of implementing, constructing, servicing and maintaining approved coastal zone management and/or restoration projects. Utilization of any and all rights derived under this lease by the mineral lessee, its agents, successors or assigns, shall not interfere with nor hinder the reasonable surface use by the Department of Natural Resources, its Offices or Commissions, as herein above reserved.

NOTE: The Department of Wildlife and Fisheries has designated certain areas in the coastal waters of the State of Louisiana as Oyster Seed Bed Areas. The exact location of those Seed Bed Areas must be obtained from the Department of Wildlife and Fisheries and any work done under a mineral lease from the State of Louisiana may necessarily be conducted in conformity with the rules and regulations promulgated by the said Department of Wildlife and Fisheries for Oyster Seed Bed Areas.

Applicant: SOUTHERN OIL & GAS COMPANY, INC.

Bidder	Cash Payment	Price/ Acre	Rental	Oil	Gas	Other



TRACT 39369 - Jefferson and Lafourche Parishes, Louisiana

All of the lands now or formerly constituting the beds and bottoms of all water bodies of every nature and description as to which title is vested in the State of Louisiana, together with all islands arising therein and other lands formed by accretion or by reliction, where allowed by law, excepting tax adjudicated lands, and not presently under mineral lease on September 12, 2007, situated in Jefferson and Lafourche Parishes, Louisiana, and more particularly described as follows: Beginning at a Point having Coordinates of X = 2,373,070.00 and Y = 308,680.00; Thence East 3,789.26 feet to the Southwest corner of State Lease No. 18010 having Coordinates of X = 2,376,859.26 and Y = 308,680.00; Thence East 1,110.74 feet along the South line of said State Lease No. 18010 to a point on the West line of State Lease No. 2383, as amended, being the most Southerly corner of said State Lease No. 18010 having Coordinates of X = 2,377,970.00 and Y = 308,680.00; Thence South 1,880.00 feet along the West line of said State Lease No. 2383 to it's Southwest corner having Coordinates of X = 2,377,970.00 and Y = 306,800.00; Thence South 1,520.00 feet to a point having Coordinates of X = 2,377,970.00 and Y = 305,280.00; Thence West 4,900.00 feet to a point having Coordinates of X = 2,373,070.00 and Y = 305,280.00; Thence North 3,400.00 feet to the point of beginning, containing **382.46 acres**, all as more particularly outlined on a plat on file in the Office of Mineral Resources, Department of Natural Resources. All bearings, distances and coordinates are based on Louisiana Coordinate System of 1927, (North or South Zone), where applicable.

NOTE: The above description of the Tract nominated for lease has been provided and corrected, where required, exclusively by the nomination party. Any mineral lease selected from this Tract and awarded by the Louisiana State Mineral Board shall be without warranty of any kind, either express, implied, or statutory, including, but not limited to, the implied warranties of merchantability and fitness for a particular purpose. Should the mineral lease awarded by the Louisiana State Mineral Board be subsequently modified, cancelled or abrogated due to the existence of conflicting leases, operating agreements, private claims or other future obligations or conditions which may affect all or any portion of the leased Tract, it shall not relieve the Lessee of the obligation to pay any bonus due thereon to the Louisiana State Mineral Board, nor shall the Louisiana State Mineral Board be obligated to refund any consideration paid by the Lessor prior to such modification, cancellation, or abrogation, including, but not limited to, bonuses, rentals and royalties.

NOTE: The State of Louisiana does hereby reserve, and this lease shall be subject to, the imprescriptible right of surface use in the nature of a servitude in favor of the Department of Natural Resources, including its Offices and Commissions, for the sole purpose of implementing, constructing, servicing and maintaining approved coastal zone management and/or restoration projects. Utilization of any and all rights derived under this lease by the mineral lessee, its agents, successors or assigns, shall not interfere with nor hinder the reasonable surface use by the

Department of Natural Resources, its Offices or Commissions, as herein above reserved.

NOTE: The Department of Wildlife and Fisheries has designated certain areas in the coastal waters of the State of Louisiana as Oyster Seed Bed Areas. The exact location of those Seed Bed Areas must be obtained from the Department of Wildlife and Fisheries and any work done under a mineral lease from the State of Louisiana may necessarily be conducted in conformity with the rules and regulations promulgated by the said Department of Wildlife and Fisheries for Oyster Seed Bed Areas.

Applicant: SOUTHERN OIL & GAS COMPANY, INC.

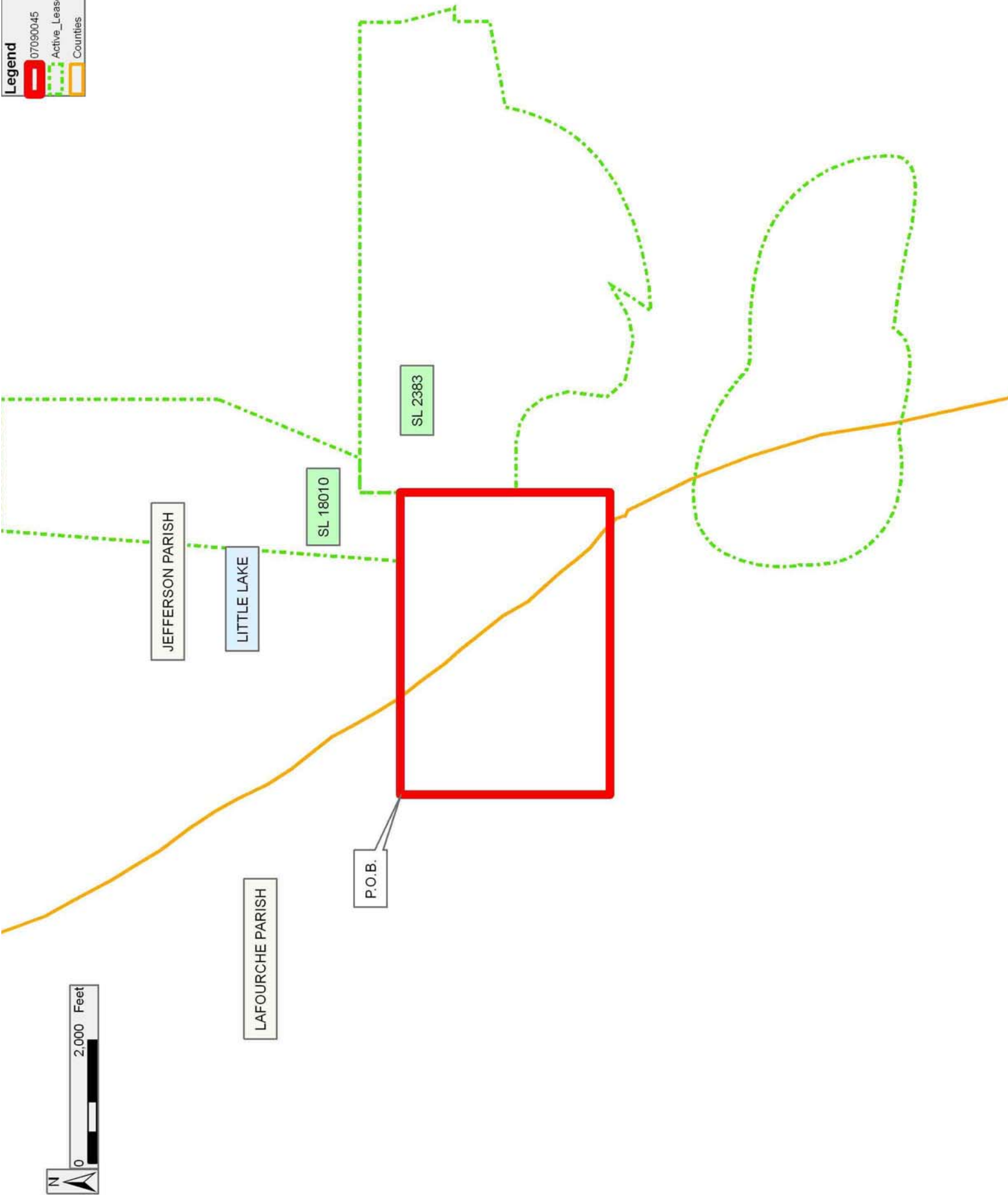
Bidder	Cash Payment	Price/ Acre	Rental	Oil	Gas	Other

Legend

 07090045

 Active_Leases

 Counties



TRACT 39370 - Lafourche Parish, Louisiana

All of the lands now or formerly constituting the beds and bottoms of all water bodies of every nature and description as to which title is vested in the State of Louisiana, together with all islands arising therein and other lands formed by accretion or by reliction, where allowed by law, excepting tax adjudicated lands, and not presently under mineral lease on September 12, 2007, situated in Lafourche Parish, Louisiana, and more particularly described as follows: Beginning at a Point having Coordinates of X = 2,373,070.00 and Y = 308,680.00; Thence South 3,400.00 feet to a point having Coordinates of X = 2,373,070.00 and Y = 305,280.00; Thence West 2,500.00 feet to a point having Coordinates of X = 2,370,570.00 and Y = 305,280.00; Thence North 3,400.00 feet to a point having Coordinates of X = 2,370,570.00 and Y = 308,680.00; Thence East 2,500.00 feet to the point of beginning, containing **195.13 acres**, all as more particularly outlined on a plat on file in the Office of Mineral Resources, Department of Natural Resources. All bearings, distances and coordinates are based on Louisiana Coordinate System of 1927, (North or South Zone), where applicable.

NOTE: The above description of the Tract nominated for lease has been provided and corrected, where required, exclusively by the nomination party. Any mineral lease selected from this Tract and awarded by the Louisiana State Mineral Board shall be without warranty of any kind, either express, implied, or statutory, including, but not limited to, the implied warranties of merchantability and fitness for a particular purpose. Should the mineral lease awarded by the Louisiana State Mineral Board be subsequently modified, cancelled or abrogated due to the existence of conflicting leases, operating agreements, private claims or other future obligations or conditions which may affect all or any portion of the leased Tract, it shall not relieve the Lessee of the obligation to pay any bonus due thereon to the Louisiana State Mineral Board, nor shall the Louisiana State Mineral Board be obligated to refund any consideration paid by the Lessor prior to such modification, cancellation, or abrogation, including, but not limited to, bonuses, rentals and royalties.

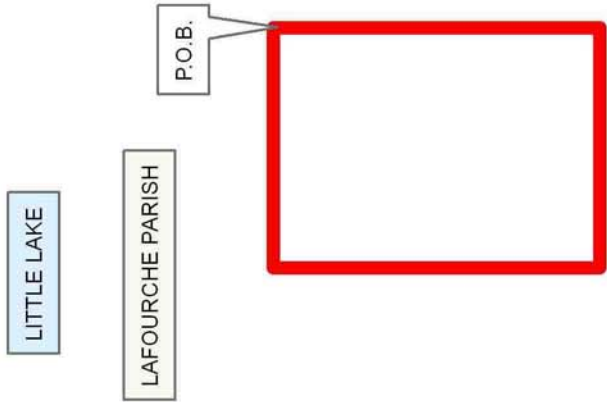
NOTE: The State of Louisiana does hereby reserve, and this lease shall be subject to, the imprescriptible right of surface use in the nature of a servitude in favor of the Department of Natural Resources, including its Offices and Commissions, for the sole purpose of implementing, constructing, servicing and maintaining approved coastal zone management and/or restoration projects. Utilization of any and all rights derived under this lease by the mineral lessee, its agents, successors or assigns, shall not interfere with nor hinder the reasonable surface use by the Department of Natural Resources, its Offices or Commissions, as herein above reserved.

NOTE: The Department of Wildlife and Fisheries has designated certain areas in the coastal waters of the State of Louisiana as Oyster Seed Bed Areas. The exact location of those Seed Bed Areas must be obtained from

the Department of Wildlife and Fisheries and any work done under a mineral lease from the State of Louisiana may necessarily be conducted in conformity with the rules and regulations promulgated by the said Department of Wildlife and Fisheries for Oyster Seed Bed Areas.

Applicant: SOUTHERN OIL & GAS COMPANY, INC.

Bidder	Cash Payment	Price/ Acre	Rental	Oil	Gas	Other



TRACT 39371 - Lafourche Parish, Louisiana

All of the lands now or formerly constituting the beds and bottoms of all water bodies of every nature and description as to which title is vested in the State of Louisiana, together with all islands arising therein and other lands formed by accretion or by reliction, where allowed by law, excepting tax adjudicated lands, and not presently under mineral lease on September 12, 2007, situated in Lafourche Parish, Louisiana, and more particularly described as follows: Beginning at a point having Coordinates of X = 2,395,063.48 and Y = 278,138.43; Thence East approximately 2,987 feet to a point on the West boundary of State Lease No. 1217, as amended; having a Coordinates of Y = 278,138.43; Thence Southerly along the West boundary of said State Lease No. 1217 approximately 8,033 feet to a point on the West boundary of said State Lease No. 1217, said point lying on the North boundary of State Lease No. 19084; Thence South 88 degrees 08 minutes 41 seconds West along the Northern boundary of State Lease No. 19084 approximately 2,988 feet to a point having Coordinates of X = 2,395,063.48 and Y = 270,013.43; Thence North 8,125.00 feet to the point of beginning. **LESS AND EXCEPT** any portion of said State Lease No. 1217 which may lie within the above described tract, containing approximately **8 acres**, all as more particularly outlined on a plat on file in the Office of Mineral Resources, Department of Natural Resources. All bearings, distances and coordinates are based on Louisiana Coordinate System of 1927, (North or South Zone), where applicable.

NOTE: The above description of the Tract nominated for lease has been provided and corrected, where required, exclusively by the nomination party. Any mineral lease selected from this Tract and awarded by the Louisiana State Mineral Board shall be without warranty of any kind, either express, implied, or statutory, including, but not limited to, the implied warranties of merchantability and fitness for a particular purpose. Should the mineral lease awarded by the Louisiana State Mineral Board be subsequently modified, cancelled or abrogated due to the existence of conflicting leases, operating agreements, private claims or other future obligations or conditions which may affect all or any portion of the leased Tract, it shall not relieve the Lessee of the obligation to pay any bonus due thereon to the Louisiana State Mineral Board, nor shall the Louisiana State Mineral Board be obligated to refund any consideration paid by the Lessor prior to such modification, cancellation, or abrogation, including, but not limited to, bonuses, rentals and royalties.

NOTE: The State of Louisiana does hereby reserve, and this lease shall be subject to, the imprescriptible right of surface use in the nature of a servitude in favor of the Department of Natural Resources, including its Offices and Commissions, for the sole purpose of implementing, constructing, servicing and maintaining approved coastal zone management and/or restoration projects. Utilization of any and all rights derived under this lease by the mineral lessee, its agents, successors or assigns, shall not interfere with nor hinder the reasonable surface use by the

Department of Natural Resources, its Offices or Commissions, as herein above reserved.

NOTE: The Department of Wildlife and Fisheries has designated certain areas in the coastal waters of the State of Louisiana as Oyster Seed Bed Areas. The exact location of those Seed Bed Areas must be obtained from the Department of Wildlife and Fisheries and any work done under a mineral lease from the State of Louisiana may necessarily be conducted in conformity with the rules and regulations promulgated by the said Department of Wildlife and Fisheries for Oyster Seed Bed Areas.

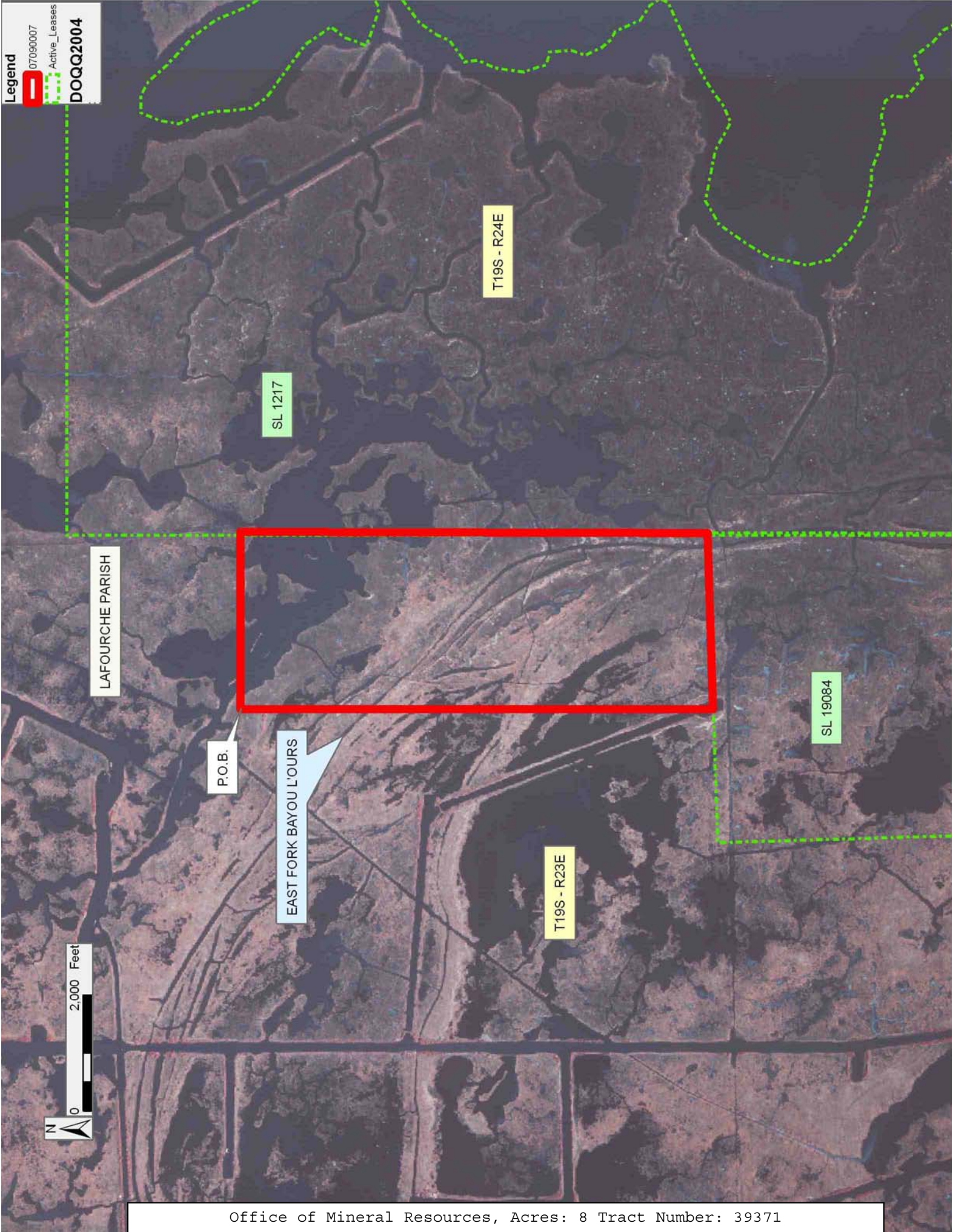
Applicant: LANDSOLUTIONS, INC.

Bidder	Cash Payment	Price/ Acre	Rental	Oil	Gas	Other

Legend

07090007
Active_Leases

DOQQ2004



TRACT 39372 - Portion of Blocks 47, 48, and 52, Main Pass Area, Revised, Plaquemines Parish, Louisiana

All of the lands now or formerly constituting the beds and bottoms of all water bodies of every nature and description as to which title is vested in the State of Louisiana, together with all islands arising therein and other lands formed by accretion or by reliction, where allowed by law, excepting tax adjudicated lands, and not presently under mineral lease on September 12, 2007, situated in Plaquemines Parish, Louisiana, and more particularly described as follows: Beginning at a point on the Eastern boundary of State Lease No. 19003 having Coordinates of X = 2,641,883.58 and Y = 266,824.33; thence East 8,141.42 feet to a point on the West boundary of State Lease No. 1268, as amended, having Coordinates of X = 2,650,025.00 and Y = 266,824.33; thence along the boundary of said State Lease No. 1268 the following courses: South 744.33 feet to a point having Coordinates of X = 2,650,025.00 and Y = 266,080.00 and East 2,725.00 feet to the Northwest corner of State Lease No. 16664 having Coordinates of X = 2,652,750.00 and Y = 266,080.00; thence along the boundary of said State Lease No. 16664 the following courses: South 1,223.84 feet to a point having Coordinates of X = 2,652,750.00 and Y = 264,856.16; North 87 degrees 38 minutes 44 seconds East 3,961.34 feet to a point having Coordinates of 2,656,708.00 and Y = 265,018.90 and South 02 degrees 59 minutes 37 seconds East 3,752.82 feet to its Southernmost Southwest corner, also being the Northwest corner of State Lease No. 18895 having Coordinates of X = 2,656,904.00 and Y = 261,271.20; thence South 66 degrees 30 minutes 50 seconds East 4,990.80 feet along the Southwestern boundary of said State Lease No. 18895 to its Southernmost corner, also being the Southwest corner of State Lease No. 16849, as amended, having Coordinates of X = 2,661,481.34 and Y = 259,282.23; thence West approximately 7,480 feet to a point on the Eastern boundary of State Lease No. 195, as amended, having a Coordinate of Y = 259,282.23; thence along the boundary of said State Lease No. 195 the following courses: Northwesterly approximately 1,096 feet and Westerly 9,325 feet to a point of intersection with a line having a bearing of South 15 degrees 30 minutes 00 seconds East and which commences at a point having Coordinates of X = 2,643,531.15 and Y = 261,415.67; thence North 15 degrees 30 minutes 00 seconds West approximately 1,425 feet along said line to a point having Coordinates of X = 2,643,531.15 and Y = 261,415.67; thence North 41 degrees 40 minutes 00 seconds West 2,103.26 feet to a point on the Southern boundary of said State Lease No. 19003 having Coordinates of X = 2,642,132.91 and Y = 262,986.86; thence along the boundary of said State Lease No. 19003 the following courses: East 2,144.59 feet to a point having Coordinates of X = 2,644,277.50 and Y = 262,986.86; North 37 degrees 34 minutes 07 seconds West 1,292.72 feet to a point having Coordinates of X = 2,643,489.32 and Y = 264,011.50; North 54 degrees 27 minutes 48 seconds East 650.74 feet to a point having Coordinates of X = 2,644,018.85 and Y = 264,389.72 and North 41 degrees 15 minutes 08 seconds West 3,238.32 feet to the point of beginning, **LESS AND EXCEPT** all of State Lease No. 18579 that lies within the above described tract, being more fully described as follows: Commencing at the point of beginning of the

above described nominated tract having Coordinates of X = 2,641,883.58 and Y = 266,824.33; thence South 43 degrees 48 minutes 08 seconds East 6,447.01 feet to the Northwest corner of said State Lease No. 18579 having Coordinates of X = 2,646,346.00 and Y = 262,171.30; thence along the boundary of said State Lease No. 18579 the following courses: North 89 degrees 36 minutes 31 seconds East 3,148.07 feet to a point having Coordinates of X = 2,649,494.00 and Y = 262,192.80; South 21 degrees 11 minutes 43 seconds East 1,927.81 feet to a point having Coordinates of X = 2,650,191.00 and Y = 260,395.40; South 88 degrees 36 minutes 00 seconds West 3,733.11 feet to a point having Coordinates of X = 2,646,459.00 and Y = 260,304.20 and North 03 degrees 27 minutes 48 seconds West 1,870.52 feet to the point of beginning, **ALSO LESS AND EXCEPT** that portion, if any, of State Lease No. 195, as amended, that may lie within the above described tract, containing approximately **1,905 acres**, all as more particularly outlined on a plat on file in the Office of Mineral Resources, Department of Natural Resources. All bearings, distances and coordinates are based on Louisiana Coordinate System of 1927, (North or South Zone), where applicable.

NOTE: The above description of the Tract nominated for lease has been provided and corrected, where required, exclusively by the nomination party. Any mineral lease selected from this Tract and awarded by the Louisiana State Mineral Board shall be without warranty of any kind, either express, implied, or statutory, including, but not limited to, the implied warranties of merchantability and fitness for a particular purpose. Should the mineral lease awarded by the Louisiana State Mineral Board be subsequently modified, cancelled or abrogated due to the existence of conflicting leases, operating agreements, private claims or other future obligations or conditions which may affect all or any portion of the leased Tract, it shall not relieve the Lessee of the obligation to pay any bonus due thereon to the Louisiana State Mineral Board, nor shall the Louisiana State Mineral Board be obligated to refund any consideration paid by the Lessor prior to such modification, cancellation, or abrogation, including, but not limited to, bonuses, rentals and royalties.

NOTE: The State of Louisiana does hereby reserve, and this lease shall be subject to, the imprescriptible right of surface use in the nature of a servitude in favor of the Department of Natural Resources, including its Offices and Commissions, for the sole purpose of implementing, constructing, servicing and maintaining approved coastal zone management and/or restoration projects. Utilization of any and all rights derived under this lease by the mineral lessee, its agents, successors or assigns, shall not interfere with nor hinder the reasonable surface use by the Department of Natural Resources, its Offices or Commissions, as herein above reserved.

NOTE: The Department of Wildlife and Fisheries has designated certain areas in the coastal waters of the State of Louisiana as Oyster Seed Bed Areas. The exact location of those Seed Bed Areas must be obtained from

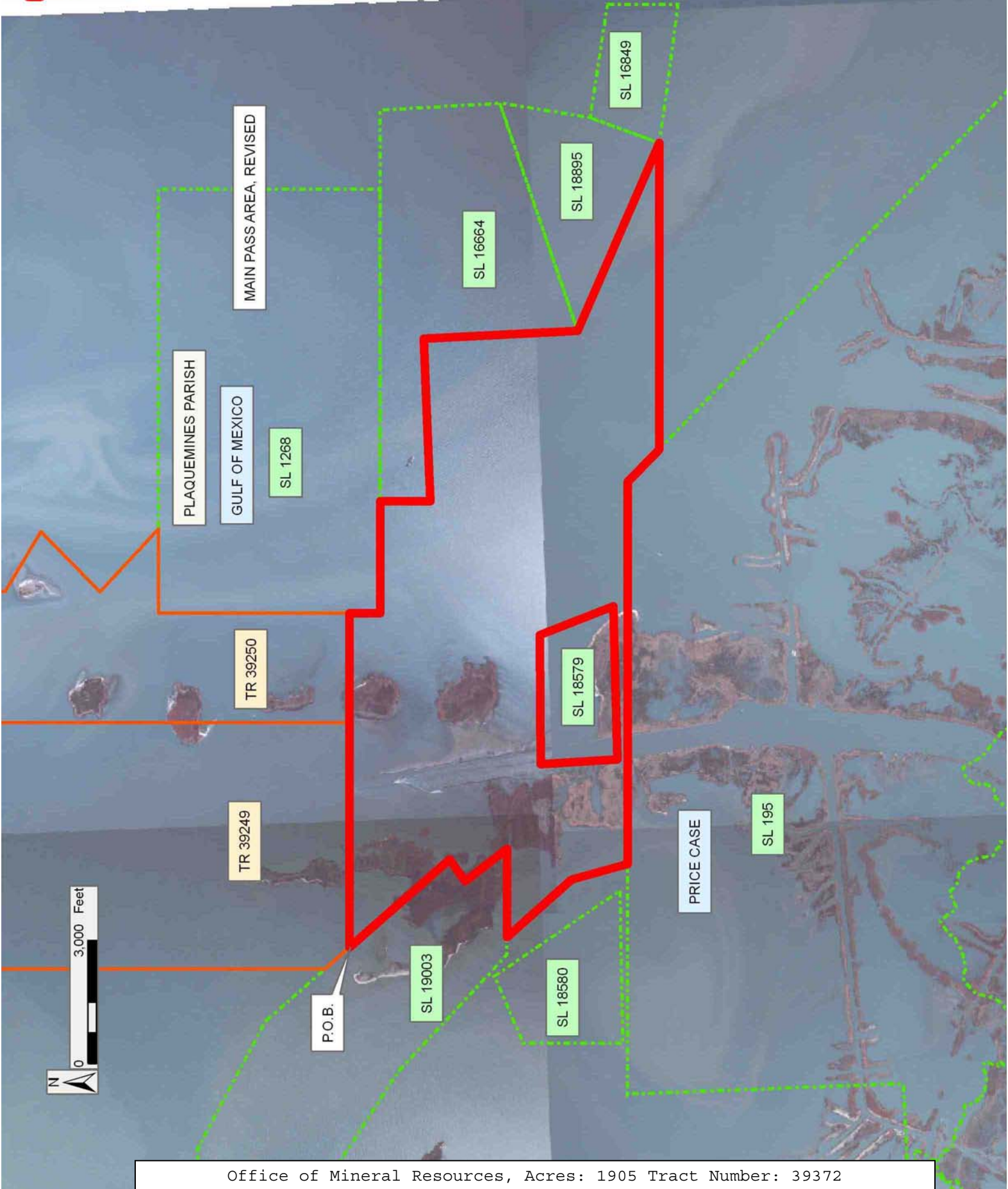
the Department of Wildlife and Fisheries and any work done under a mineral lease from the State of Louisiana may necessarily be conducted in conformity with the rules and regulations promulgated by the said Department of Wildlife and Fisheries for Oyster Seed Bed Areas.

Applicant: TYVEK MINERALS & DEVELOPMENT

Bidder	Cash Payment	Price/ Acre	Rental	Oil	Gas	Other

Legend

- 07090036
- Tracts
- Active_Leases
- DOQQ2004



TRACT 39373 - Plaquemines Parish, Louisiana

All of the lands now or formerly constituting the beds and bottoms of all water bodies of every nature and description as to which title is vested in the State of Louisiana, together with all islands arising therein and other lands formed by accretion or by reliction, where allowed by law, excepting tax adjudicated lands, and not presently under mineral lease on September 12, 2007, situated in Plaquemines Parish, Louisiana, and more particularly described as follows: Beginning at a point on the West boundary of State Lease No. 18909 and the North boundary of State Lease No. 18912 having Coordinates of X = 2,498,090.00 and Y = 247,500.00; thence West 7,190.00 feet along the North boundary of said State Lease No. 18912 to its point of intersection with the East boundary of State Lease No. 17722 having Coordinates of X = 2,490,900.00 and Y = 247,500.00; thence North 2,998.01 feet along the East boundary of said State Lease No. 17722 to its Northeast corner having Coordinates of X = 2,490,900.00 and Y = 250,498.01; thence continuing North approximately 733 feet to a point of intersection with the South line of that certain tract of land described as the Operating Area in the certain Agreement between Ernest Cockrell, et al and The State Of Louisiana, dated May 16, 1938, recorded at Book 88, Page 189 in the records of Plaquemines Parish; thence Easterly approximately 3079 feet along said South line of said Operating Area to a point of intersection with Tract 2 of State Lease No. 17267, as amended; thence along the boundary of said State Lease No. 17267 the following courses: South 13 degrees 00 minutes 20 seconds East approximately 222 feet, North 76 degrees 59 minutes 40 seconds East 700.00 feet and North 13 degrees 00 minutes 20 seconds West approximately 70 feet to a point of intersection with the said Operating Area; thence Easterly approximately 3394 feet and Northerly approximately 1124 feet along the boundary of said Operating Area to the Southwest corner of State Lease No. 18015; thence along the boundary of said State Lease No. 18015 the following courses: North 87 degrees 44 minutes 13 seconds East approximately 205 feet to a point having Coordinates of X = 2,498,279.13 and Y = 252,459.28 and North 02 degrees 15 minutes 47 seconds West 1,515.87 feet to the Southwest corner of Tract 3 of State Lease No. 17267, as amended having Coordinates of X = 2,498,219.27 and Y = 253,973.96; thence along the boundary of said Tract 3 of State Lease No. 17267 the following courses: South 67 degrees 49 minutes 01 seconds East 182.68 feet, North 24 degrees 24 minutes 06 seconds East 1153.03 feet, North 75 degrees 41 minutes 38 seconds West 363.75 feet, and North 19 degrees 07 minutes 27 seconds East 66.64 feet to a point of intersection with the South line of State Lease No. 1464, as amended having Coordinates of X = 2,498,534.14 and Y = 255,107.87; thence along the South boundary of said State Lease No. 1464 South 88 degrees 12 minutes 11 seconds East 846.28 feet to the Northwest corner of State Lease No. 18909 having Coordinates of X = 2,499,380.00 and Y = 255,081.33; thence along the boundary of said State Lease No. 18909 the following courses: South 4,501.33 feet to a point having Coordinates of X = 2,499,380.00 and Y = 250,580.00; thence West 1,290.00 feet to a point having Coordinates of X = 2,498,090.00 and Y = 250,580.00; thence South 3,080.00 feet to the Point of Beginning, **LESS AND EXCEPT** IN ITS ENTIRETY

Tract 1 of State Lease No. 17267 more particularly described as follows: Begin at X = 2,498,090.00 and Y = 247,500.00; thence North 63 degrees 48 minutes 19 seconds West 7,177.48 feet to said State Lease No. 17267 Point of Beginning, having Coordinates of X = 2,491,649.65 and Y = 250,668.30; thence South 15 degrees 09 minutes 17 seconds East 102.52 feet; thence South 16 degrees 08 minutes 45 seconds East 92.24 feet; thence South 17 degrees 19 minutes 52 seconds East 82.08 feet; thence South 18 degrees 51 minutes 01 seconds East 71.96 feet; thence South 20 degrees 54 minutes 06 seconds East 62.09 feet; thence South 23 degrees 40 minutes 24 seconds East 52.30 feet; thence South 24 degrees 06 minutes 44 seconds East 48.59 feet; thence South 40 degrees 51 minutes 37 seconds East 58.77 feet; thence South 46 degrees 37 minutes 35 seconds East 67.27 feet; thence South 52 degrees 50 minutes 56 seconds East 77.41 feet; thence South 57 degrees 33 minutes 48 seconds East 88.75 feet; thence South 60 degrees 20 minutes 32 seconds East 48.91 feet; thence South 63 degrees 08 minutes 25 seconds East 100.04 feet; thence South 67 degrees 06 minutes 47 seconds East 98.99 feet; thence South 71 degrees 14 minutes 08 seconds East 99.01 feet; thence South 75 degrees 14 minutes 31 seconds East 100.10 feet; thence South 79 degrees 35 minutes 06 seconds East 102.34 feet; thence South 84 degrees 08 minutes 48 seconds East 105.90 feet; thence South 88 degrees 25 minutes 13 seconds East 110.64 feet; thence North 87 degrees 45 minutes 55 seconds East 116.69 feet; thence North 84 degrees 27 minutes 27 seconds East 61.09 feet; thence North 81 degrees 41 minutes 50 seconds East 63.36 feet; thence North 79 degrees 00 minutes 51 seconds East 65.86 feet; thence North 77 degrees 39 minutes 54 seconds East 74.66 feet; thence North 72 degrees 53 minutes 36 seconds East 65.61 feet; thence North 72 degrees 16 minutes 07 seconds East 74.70 feet; thence North 70 degrees 24 minutes 55 seconds East 78.01 feet; thence North 68 degrees 43 minutes 13 seconds East 81.56 feet; thence South 06 degrees 04 minutes 21 seconds West 1,848.07 feet; thence South 80 degrees 29 minutes 53 seconds West 82.99 feet; thence South 81 degrees 12 minutes 14 seconds West 78.47 feet; thence South 81 degrees 58 minutes 25 seconds West 74.13 feet; thence South 82 degrees 53 minutes 43 seconds West 69.94 feet; thence South 83 degrees 50 minutes 51 seconds West 65.78 feet; thence South 84 degrees 59 minutes 10 seconds West 61.79 feet; thence South 86 degrees 14 minutes 19 seconds West 57.92 feet; thence South 87 degrees 40 minutes 25 seconds West 54.19 feet; thence South 89 degrees 50 minutes 08 seconds West 104.50 feet; thence North 87 degrees 27 minutes 17 seconds West 104.70 feet; thence North 84 degrees 42 minutes 36 seconds West 105.75 feet; thence North 82 degrees 05 minutes 45 seconds West 107.62 feet; thence North 79 degrees 44 minutes 15 seconds West 108.89 feet; thence North 77 degrees 34 minutes 55 seconds West 109.51 feet; thence North 75 degrees 24 minutes 23 seconds West 110.93 feet; thence North 73 degrees 21 minutes 58 seconds West 113.19 feet; thence North 70 degrees 49 minutes 37 seconds West 117.84 feet; thence North 68 degrees 01 minutes 59 seconds West 125.24 feet; thence North 65 degrees 32 minutes 43 seconds West 133.58 feet; thence North 63 degrees 25 minutes 01 seconds West 142.80 feet; thence North 07 degrees 08 minutes 05 seconds East 2,302.68 feet to the Point of Beginning, containing approximately **218 acres**, all as more

particularly outlined on a plat on file in the Office of Mineral Resources, Department of Natural Resources. All bearings, distances and coordinates are based on Louisiana Coordinate System of 1927, (North or South Zone), where applicable.

NOTE: The above description of the Tract nominated for lease has been provided and corrected, where required, exclusively by the nomination party. Any mineral lease selected from this Tract and awarded by the Louisiana State Mineral Board shall be without warranty of any kind, either express, implied, or statutory, including, but not limited to, the implied warranties of merchantability and fitness for a particular purpose. Should the mineral lease awarded by the Louisiana State Mineral Board be subsequently modified, cancelled or abrogated due to the existence of conflicting leases, operating agreements, private claims or other future obligations or conditions which may affect all or any portion of the leased Tract, it shall not relieve the Lessee of the obligation to pay any bonus due thereon to the Louisiana State Mineral Board, nor shall the Louisiana State Mineral Board be obligated to refund any consideration paid by the Lessor prior to such modification, cancellation, or abrogation, including, but not limited to, bonuses, rentals and royalties.

NOTE: The State of Louisiana does hereby reserve, and this lease shall be subject to, the imprescriptible right of surface use in the nature of a servitude in favor of the Department of Natural Resources, including its Offices and Commissions, for the sole purpose of implementing, constructing, servicing and maintaining approved coastal zone management and/or restoration projects. Utilization of any and all rights derived under this lease by the mineral lessee, its agents, successors or assigns, shall not interfere with nor hinder the reasonable surface use by the Department of Natural Resources, its Offices or Commissions, as herein above reserved.

NOTE: The Department of Wildlife and Fisheries has designated certain areas in the coastal waters of the State of Louisiana as Oyster Seed Bed Areas. The exact location of those Seed Bed Areas must be obtained from the Department of Wildlife and Fisheries and any work done under a mineral lease from the State of Louisiana may necessarily be conducted in conformity with the rules and regulations promulgated by the said Department of Wildlife and Fisheries for Oyster Seed Bed Areas.

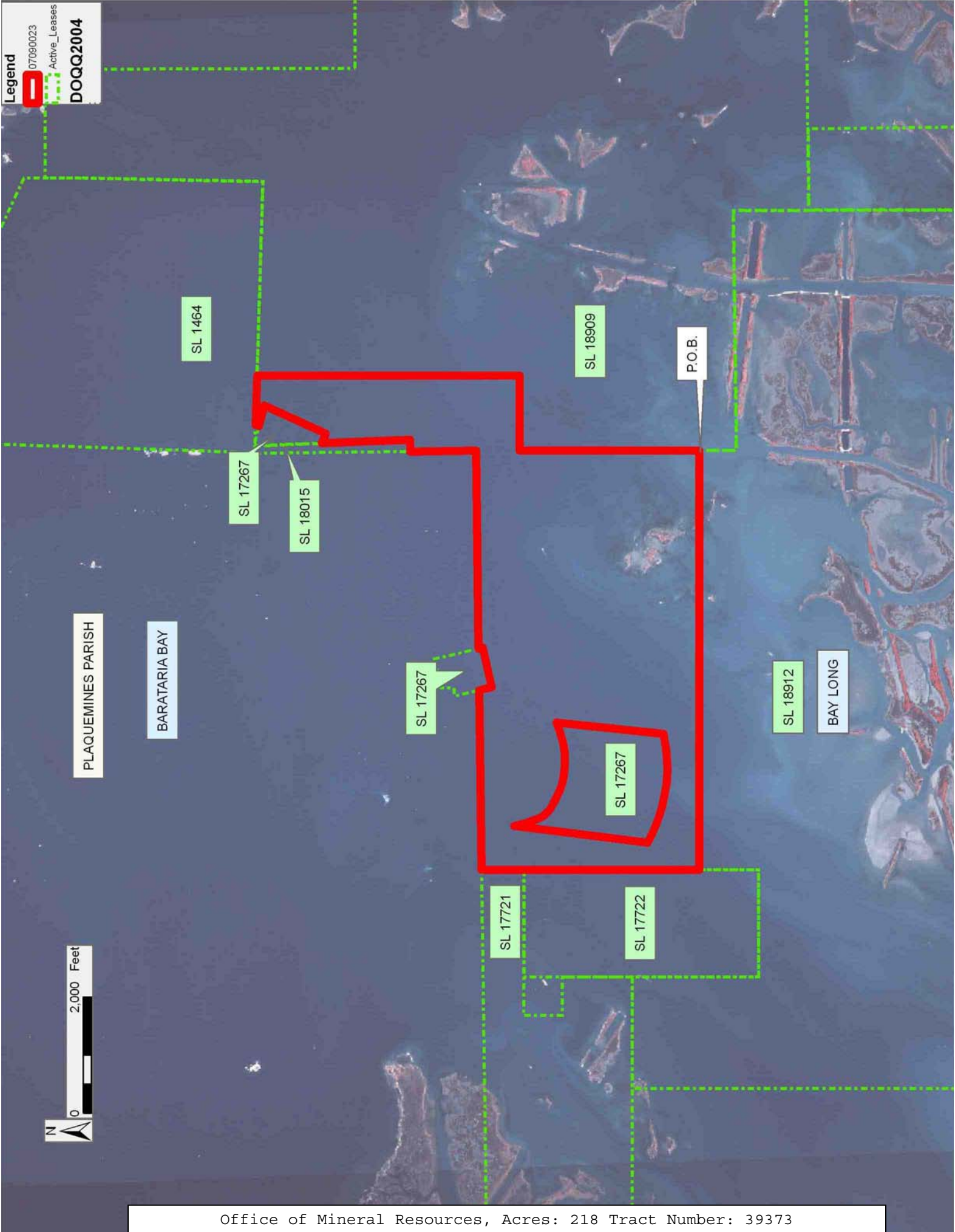
Applicant: MARK A O' NEAL & ASSOCIATES INC.

Bidder	Cash Payment	Price/ Acre	Rental	Oil	Gas	Other

Legend

 07090023 Active_Leases

DOQQ2004



TRACT 39374 - Plaquemines Parish, Louisiana

All of the lands now or formerly constituting the beds and bottoms of all water bodies of every nature and description as to which title is vested in the State of Louisiana, together with all islands arising therein and other lands formed by accretion or by reliction, where allowed by law, excepting tax adjudicated lands, and not presently under mineral lease on September 12, 2007, situated in Plaquemines Parish, Louisiana, and more particularly described as follows: Beginning at a point, said to be on the Western boundary of State Lease No. 3212, having Coordinates of X = 2,560,647.47 and Y = 240,927.00; thence Southerly approximately 1,540 feet along the Western boundary of said State Lease No. 3212 to a point of intersection with the boundary of State Lease No. 192, as amended; thence along the meanders of said State Lease No. 192 the following: Southwesterly, Southerly and Southeasterly to a point of intersection with the Northern boundary of State Lease No. 3155; thence along the boundary of said State Lease No. 3155 the following courses: Westerly approximately 1,105 feet and Southerly approximately 508 feet to a point of intersection with the Northern boundary of State Lease No. 2652; thence Westerly approximately 6,568 feet along the Northern boundary of said State Lease No. 2652 to the Southernmost Southeast corner of State Lease No. 2651; thence along the boundary of said State Lease No. 2651 the following courses: Northerly approximately 8,133 feet and Easterly approximately 7,586 feet to a point of intersection with the Western boundary of said State Lease No. 3212; thence Southerly approximately 1,079 feet along the Western boundary of said State Lease No. 3212 to the point of beginning, **LESS AND EXCEPT** that portion, if any of State Lease No. 192, as amended, State Lease No. 2651, State Lease No. 2652, State Lease No. 3155 and State Lease No. 3212 that may lie within the above described tract, containing approximately **1,312 acres**, all as more particularly outlined on a plat on file in the Office of Mineral Resources, Department of Natural Resources. All bearings, distances and coordinates are based on Louisiana Coordinate System of 1927, (North or South Zone), where applicable.

NOTE: The above description of the Tract nominated for lease has been provided and corrected, where required, exclusively by the nomination party. Any mineral lease selected from this Tract and awarded by the Louisiana State Mineral Board shall be without warranty of any kind, either express, implied, or statutory, including, but not limited to, the implied warranties of merchantability and fitness for a particular purpose. Should the mineral lease awarded by the Louisiana State Mineral Board be subsequently modified, cancelled or abrogated due to the existence of conflicting leases, operating agreements, private claims or other future obligations or conditions which may affect all or any portion of the leased Tract, it shall not relieve the Lessee of the obligation to pay any bonus due thereon to the Louisiana State Mineral Board, nor shall the Louisiana State Mineral Board be obligated to refund any consideration paid by the Lessor prior to such modification, cancellation, or abrogation, including, but not limited to, bonuses, rentals and royalties.

NOTE: The State of Louisiana does hereby reserve, and this lease shall be subject to, the imprescriptible right of surface use in the nature of a servitude in favor of the Department of Natural Resources, including its Offices and Commissions, for the sole purpose of implementing, constructing, servicing and maintaining approved coastal zone management and/or restoration projects. Utilization of any and all rights derived under this lease by the mineral lessee, its agents, successors or assigns, shall not interfere with nor hinder the reasonable surface use by the Department of Natural Resources, its Offices or Commissions, as herein above reserved.

NOTE: The Department of Wildlife and Fisheries has designated certain areas in the coastal waters of the State of Louisiana as Oyster Seed Bed Areas. The exact location of those Seed Bed Areas must be obtained from the Department of Wildlife and Fisheries and any work done under a mineral lease from the State of Louisiana may necessarily be conducted in conformity with the rules and regulations promulgated by the said Department of Wildlife and Fisheries for Oyster Seed Bed Areas.

Applicant: PETRO-LAND RESOURCES, INC.

Bidder	Cash Payment	Price/ Acre	Rental	Oil	Gas	Other

Legend

07090003
Active_Leases
DOQQ2004

