

TRACT 39355 - Bossier and Caddo Parishes, Louisiana

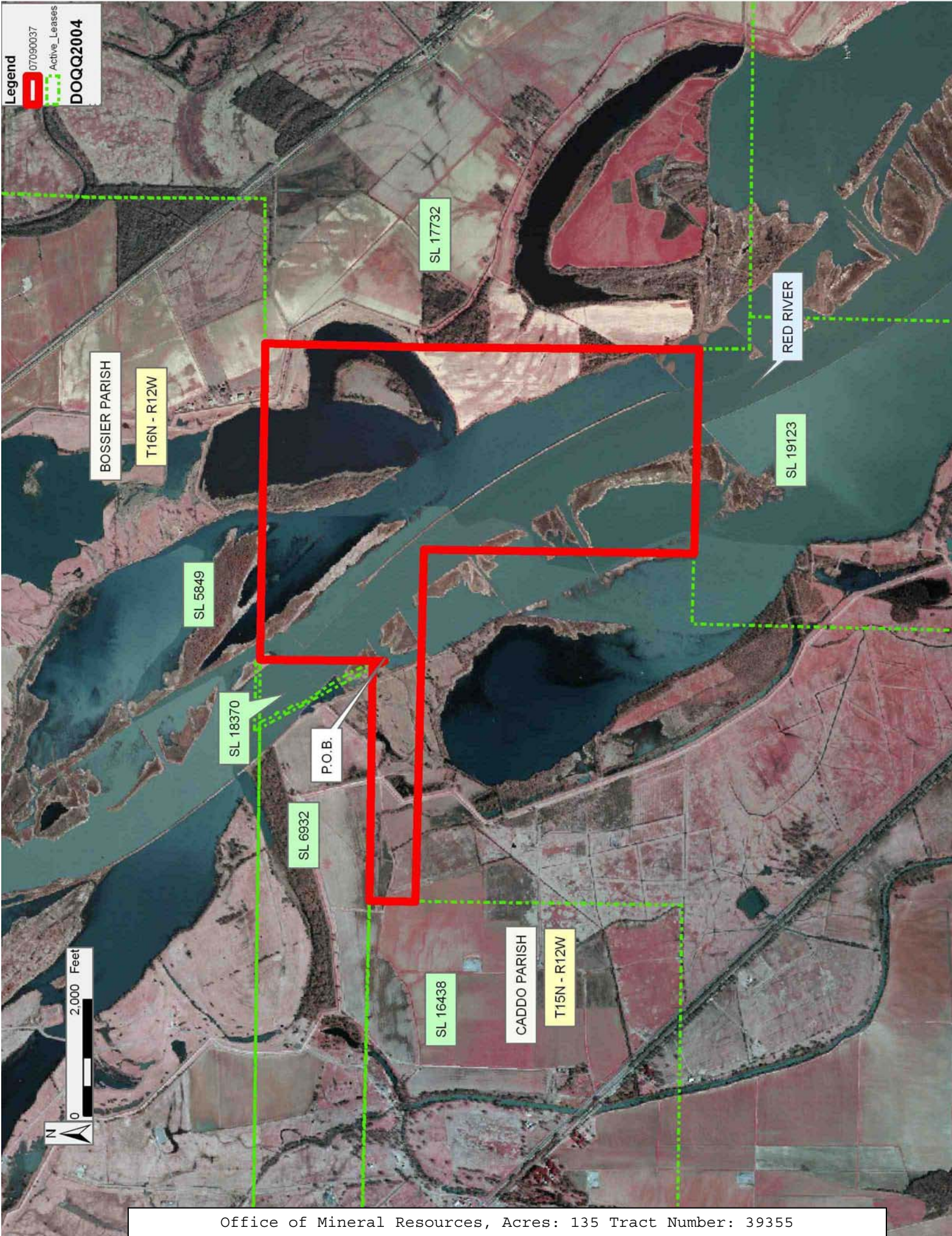
All of the lands now or formerly constituting the beds and bottoms of all water bodies of every nature and description as to which title is vested in the State of Louisiana, together with all islands arising therein and other lands formed by accretion or by reliction, where allowed by law, excepting tax adjudicated lands, and not presently under mineral lease on September 12, 2007, situated in Bossier and Caddo Parishes, Louisiana, and more particularly described as follows: Beginning at the South corner of State Lease No. 18370, having Coordinates of X = 1,671,985.00 and Y = 604,635.00; thence North approximately 2,133 feet along the East boundary or a projection thereof of said State Lease No. 18370 to the point of intersection with the South boundary of State Lease No. 5849, having a Coordinate of X = 1,671,985.00; thence Easterly approximately 5,397 feet along the South boundary of said State Lease No. 5849 to the most Southern Northwest corner of State Lease No. 17732; thence Southerly approximately 7,436 feet along the West boundary of said State Lease No. 17732 to the Northeast corner of State Lease No. 19123; thence Westerly approximately 3,496 feet along the North boundary of said State Lease No. 19123 to the point of intersection with the East line or a projection thereof of State Lease No. 6856, as amended, also being the East line or a projection thereof of Unit CV RA SU 64; thence Northerly approximately 4,630 feet along said East line to its Northeast corner; thence Westerly approximately 6,029 feet along the North line or a projection thereof of said State Lease No. 6856, also being the North line or a projection thereof of Unit CV RA SU 64 to the point of intersection with the East boundary of State Lease No. 16438; thence Northerly approximately 793 feet along the East boundary or a projection thereof of said State Lease No. 16438 to the point of intersection with the South boundary of State Lease No. 6932, as amended; thence Easterly approximately 4,017 feet along the South boundary of said State Lease No. 6932 to the point of intersection with the Southwest boundary of said State Lease No. 18370; thence South 29 degrees 24 minutes 26 seconds East approximately 236 feet along the Southwest boundary of said State Lease No. 18370 to the point of beginning, **LESS AND EXCEPT** any portions of State Lease No. 6856, as amended, that may lie within the above described tract, containing approximately **135 acres**, all as more particularly outlined on a plat on file in the Office of Mineral Resources, Department of Natural Resources. All bearings, distances and coordinates are based on Louisiana Coordinate System of 1927, (North or South Zone), where applicable.

NOTE: The above description of the Tract nominated for lease has been provided and corrected, where required, exclusively by the nomination party. Any mineral lease selected from this Tract and awarded by the Louisiana State Mineral Board shall be without warranty of any kind, either express, implied, or statutory, including, but not limited to, the implied warranties of merchantability and fitness for a particular purpose. Should the mineral lease awarded by the Louisiana State Mineral Board be subsequently modified, cancelled or abrogated due to the existence of conflicting leases, operating agreements, private claims or

other future obligations or conditions which may affect all or any portion of the leased Tract, it shall not relieve the Lessee of the obligation to pay any bonus due thereon to the Louisiana State Mineral Board, nor shall the Louisiana State Mineral Board be obligated to refund any consideration paid by the Lessor prior to such modification, cancellation, or abrogation, including, but not limited to, bonuses, rentals and royalties.

Applicant: WINWELL, LLC

Bidder	Cash Payment	Price/ Acre	Rental	Oil	Gas	Other



TRACT 39356 - Iberville Parish, Louisiana

All of the lands now or formerly constituting the beds and bottoms of all water bodies of every nature and description as to which title is vested in the State of Louisiana, together with all islands arising therein and other lands formed by accretion or by reliction, where allowed by law, excepting tax adjudicated lands, and not presently under mineral lease on September 12, 2007, situated in Iberville Parish, Louisiana, and more particularly described as follows: Beginning at a point having Coordinates of X = 1,989,100.00 and Y = 607,400.00; thence East 14,200.00 feet to a point having Coordinates of X = 2,003,300.00 and Y = 607,400.00; thence South 5,400.00 feet to the Northwest corner of Operating Agreement No. 215 having Coordinates of X = 2,003,300.00 and Y = 602,000.00; thence South 5,500.00 feet along the West line of said Operating Agreement No. 215 to its Southwest corner having Coordinates of X = 2,003,300.00 and Y = 596,500.00; thence South 3,300.00 feet to a point having Coordinates of X = 2,003,300.00 and Y = 593,200.00; thence West 14,200.00 feet to a point having Coordinates of X = 1,989,100.00 and Y = 593,200.00; thence North 14,200.00 feet to the Point of Beginning, containing approximately **61 acres**, all as more particularly outlined on a plat on file in the Office of Mineral Resources, Department of Natural Resources. All bearings, distances and coordinates are based on Louisiana Coordinate System of 1927, (North or South Zone), where applicable.

NOTE: The above description of the Tract nominated for lease has been provided and corrected, where required, exclusively by the nomination party. Any mineral lease selected from this Tract and awarded by the Louisiana State Mineral Board shall be without warranty of any kind, either express, implied, or statutory, including, but not limited to, the implied warranties of merchantability and fitness for a particular purpose. Should the mineral lease awarded by the Louisiana State Mineral Board be subsequently modified, cancelled or abrogated due to the existence of conflicting leases, operating agreements, private claims or other future obligations or conditions which may affect all or any portion of the leased Tract, it shall not relieve the Lessee of the obligation to pay any bonus due thereon to the Louisiana State Mineral Board, nor shall the Louisiana State Mineral Board be obligated to refund any consideration paid by the Lessor prior to such modification, cancellation, or abrogation, including, but not limited to, bonuses, rentals and royalties.

Applicant: A. S. RUFFIN, JR.

Bidder	Cash Payment	Price/ Acre	Rental	Oil	Gas	Other

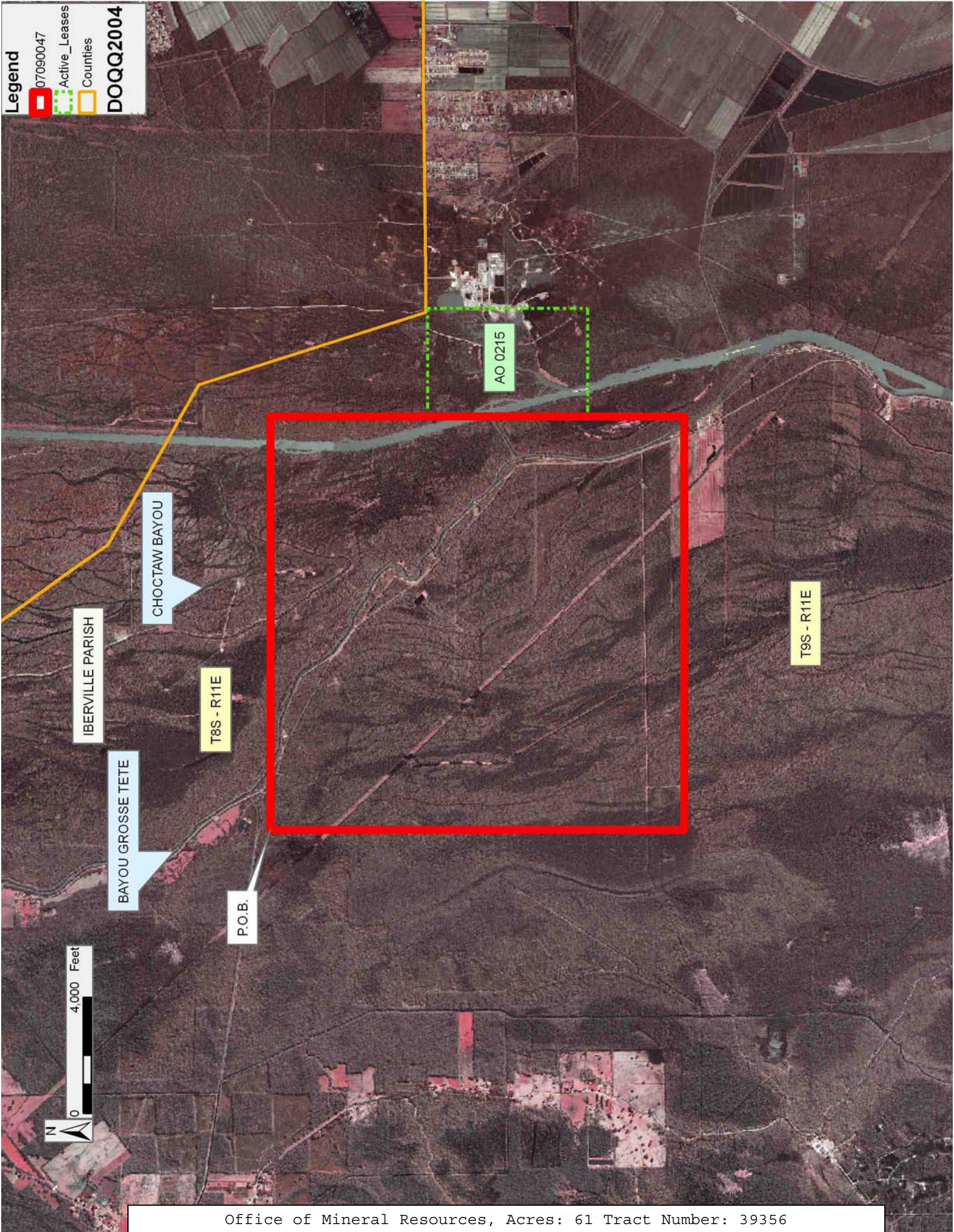
Legend

 07090047

 Active_Leases

 Counties

DOQQ2004



TRACT 39357 - Calcasieu Parish, Louisiana

All of the lands now or formerly constituting the beds and bottoms of all water bodies of every nature and description as to which title is vested in the State of Louisiana, together with all islands arising therein and other lands formed by accretion or by reliction, where allowed by law, excepting tax adjudicated lands, and not presently under mineral lease on September 12, 2007, situated in Calcasieu Parish, Louisiana, and more particularly described as follows: Beginning at a point having Coordinates of X = 1,254,367.51 and Y = 580,458.04; thence South 8,878.24 feet to a point having Coordinates of X = 1,254,367.51 and Y = 571,579.80; thence West 2,664.10 feet to the Southeast corner of State Lease No. 15726, as amended having Coordinates of X = 1,251,703.41 and Y = 571,579.80; thence along the boundary of said State Lease No. 15726 North 970.20 feet to its Northeast corner and the Southeast corner of State Lease No. 15202, as amended having Coordinates of X = 1,251,703.41 and Y = 572,550.00; thence along the boundary of said State Lease No. 15202 the following courses: North 1,349.80 feet to a point having Coordinates of X = 1,251,703.41 and Y = 573,899.80 and West 703.41 feet to its Northwest corner and the Northeast corner of State Lease No. 15155, as amended having Coordinates of X = 1,251,000.00 and Y = 573,899.80; thence along the boundary of said State Lease No. 15155 the following courses: West approximately 2,261 feet to a point on the Texas-Louisiana boundary and Southerly along the meanders of said Texas-Louisiana boundary to a point having a Coordinate of Y = 573,163.53; thence West approximately 4,176 feet to a point having Coordinates of X = 1,244,840.27 and Y = 573,163.53; thence North 7,294.51 feet to a point having Coordinates of X = 1,244,840.27 and Y = 580,458.04; thence East 9,527.24 feet to the point of beginning, **LESS AND EXCEPT** all that portion of the above described tract lying within the boundaries of the Sabine Island Wildlife Management Area, containing approximately **38 acres**, **LESS AND EXCEPT** that portion thereof, if any, located West of the boundary line between the States of Texas and Louisiana as determined by the report of the Special Master and adjudicated by the Supreme Court of the United States in litigation styled **Texas v. Louisiana, et al No. 36 Original**, or as otherwise approved by said court, all as more particularly outlined on a plat on file in the Office of Mineral Resources, Department of Natural Resources. All bearings, distances and coordinates are based on Louisiana Coordinate System of 1927, (North or South Zone), where applicable.

NOTE: The above description of the Tract nominated for lease has been provided and corrected, where required, exclusively by the nomination party. Any mineral lease selected from this Tract and awarded by the Louisiana State Mineral Board shall be without warranty of any kind, either express, implied, or statutory, including, but not limited to, the implied warranties of merchantability and fitness for a particular purpose. Should the mineral lease awarded by the Louisiana State Mineral Board be subsequently modified, cancelled or abrogated due to the existence of conflicting leases, operating agreements, private claims or other future obligations or conditions which may affect all or any portion

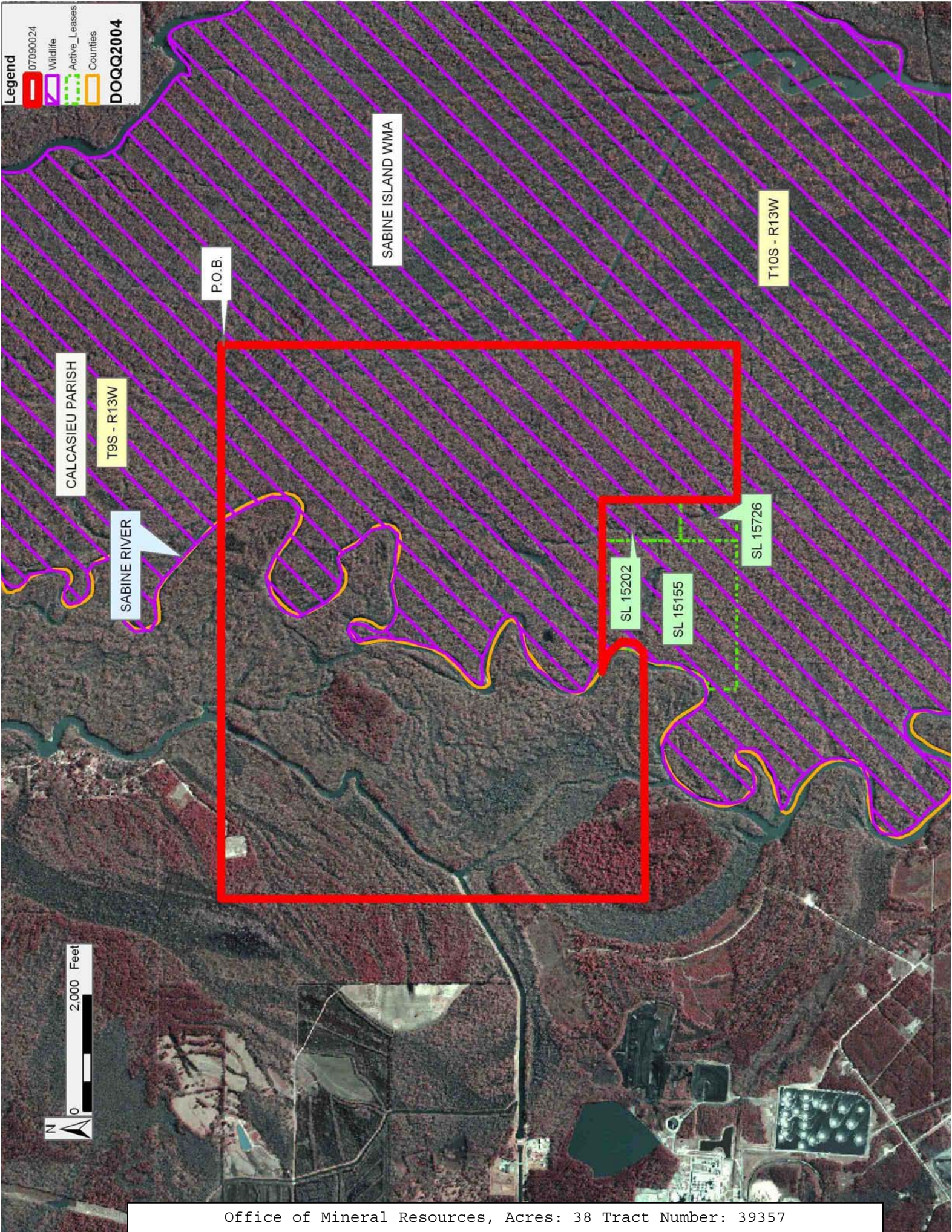
of the leased Tract, it shall not relieve the Lessee of the obligation to pay any bonus due thereon to the Louisiana State Mineral Board, nor shall the Louisiana State Mineral Board be obligated to refund any consideration paid by the Lessor prior to such modification, cancellation, or abrogation, including, but not limited to, bonuses, rentals and royalties.

NOTE: This tract is located within the boundaries of a wildlife management area or refuge and any operations conducted thereon in conjunction with this mineral lease may be subject to rules and regulations promulgated by the Department of Wildlife and Fisheries for the protection of fish, birds and other wildlife including, but not necessarily limited to, the following:

1. No activities will be allowed without written authorization from the Louisiana Department of Wildlife and Fisheries. All projects will be coordinated and approved by the appropriate WMA Supervisor prior to any activities on the wildlife management area.
2. Proposed projects will be evaluated on a case by case basis. Modifications to proposed projects may be required including, but not limited to, access routes, spoil placement, well sites, flow lines and other appurtenant structures required by the Louisiana Department of Wildlife and Fisheries.
3. Compensatory mitigation will be required to offset unavoidable wetland impacts.
4. Removal of all structures, facilities, and equipment will be required within 120 days of abandonment unless otherwise agreed to by the Department of Wildlife and Fisheries.
5. No activities will be allowed during the hunting season unless approved by the Department.
6. Compliance with the said WMA regulations will be required unless otherwise specified by the Department.
7. Prior to submitting applications for wetland permits to Federal and State permitting agencies the lease holder shall coordinate project details with the Louisiana Department of Wildlife and Fisheries, Fur and Refuge Division. Contact person for the Department will be Mike Windham at (504) 568-5886.

Applicant: BARKER ENERGY

Bidder	Cash Payment	Price/ Acre	Rental	Oil	Gas	Other



TRACT 39358 - Calcasieu Parish, Louisiana

All of the lands now or formerly constituting the beds and bottoms of all water bodies of every nature and description as to which title is vested in the State of Louisiana, together with all islands arising therein and other lands formed by accretion or by reliction, where allowed by law, excepting tax adjudicated lands, and not presently under mineral lease on September 12, 2007, situated in Calcasieu Parish, Louisiana, and more particularly described as follows: Beginning at a point having Coordinates of X = 1,372,477.37 and Y = 571,761.98; thence East 18,480.00 feet to a point having Coordinates of X = 1,390,957.37 and Y = 571,761.98; thence South 13,700.00 feet to a point having Coordinates of X = 1,390,957.37 and Y = 558,061.98; thence West 18,480.00 feet to a point having Coordinates of X = 1,372,477.37 and Y = 558,061.98; thence North 13,700.00 feet to the Point of Beginning; **LESS AND EXCEPT** in its entirety State Lease No. 12974, as amended, more particularly described as follows: All that portion of State Lease No. 12974 located within the boundaries of the Mobil MARG 2 RA SUA (Farquhar No. A 13), under that certain Louisiana Office of Conservation Order No. 337 K, effective April 1, 1966, and as amended by that certain Louisiana Office of Conservation Order No. 337 K 1, effective June 12, 1990, containing approximately 0.79 acres, more or less; And **LESS AND EXCEPT** in its entirety State Lease No. 16286, as amended, more particularly described as follows: All that portion of State Lease No. 16286 locate within the composite boundaries of the 4150 feet RA SUA created by Conservation Order No. 337 CC, A 8 RA SUA created by Conservation Order No. 337 T and the 2275 feet RA SUA created by Conservation Order No. 337 W, being more fully described as follows: Beginning at a point having Coordinates of X = 1,372,477.37 and Y = 571,761.98; thence South 53 degrees 16 minutes 57 seconds East 10,368.45 feet to said State Lease No. 16286 Point of Beginning, being a point on the boundary of said 4150 feet RA SUA, having Coordinates of X = 1,380,788.64 and Y = 565,562.98; thence along the said boundaries of the 4150 feet RA SUA the following courses: South 64 degrees 29 minutes 03 seconds East 11.54 feet to a point having Coordinates of X = 1,380,799.06 and Y = 565,558.01; South 50 degrees 20 minutes 51 seconds East 87.63 feet to a point having Coordinates of X = 1,380,866.53 and Y = 565,502.09; South 44 degrees 22 minutes 06 seconds East 85.29 feet to a point having Coordinates of X = 1,380,926.17 and Y = 565,441.12; South 35 degrees 17 minutes 49 seconds East 107.11 feet to a point having Coordinates of X = 1,380,988.06 and Y = 565,353.70; South 31 degrees 05 minutes 14 seconds East 114.63 feet to a point having Coordinates of X = 1,381,047.25 and Y = 565,255.53; South 25 degrees 35 minutes 04 seconds East 180.32 feet to a point having Coordinates of X = 1,381,125.12 and Y = 565,092.89; South 15 degrees 31 minutes 33 seconds East 106.17 feet to a point having Coordinates of X = 1,381,153.54 and Y = 564,990.59; South 08 degrees 17 minutes 12 seconds East 64.67 feet to a point having Coordinates of X = 1,381,162.86 and Y = 564,926.60; South 04 degrees 28 minutes 55 seconds West 56.56 feet to a point having Coordinates of X = 1,381,158.44 and Y = 564,870.21; South 13 degrees 23 minutes 35 seconds West 47.75 feet to a point having Coordinates of X = 1,381,147.38 and Y = 564,823.76; South 01

degrees 29 minutes 09 seconds East 37.02 feet to a point having Coordinates of X = 1,381,148.34 and Y = 564,786.75; South 04 degrees 04 minutes 36 seconds West 50.08 feet to a point having Coordinates of X = 1,381,144.78 and Y = 564,736.80; South 08 degrees 41 minutes 02 seconds West 112.40 feet to a point having Coordinates of X = 1,381,127.81 and Y = 564,625.69; South 13 degrees 35 minutes 53 seconds West 84.05 feet to a point having Coordinates of X = 1,381,108.05 and Y = 564,544.00; South 24 degrees 33 minutes 07 seconds West 66.33 feet to a point having Coordinates of X = 1,381,080.49 and Y = 564,483.67; South 29 degrees 59 minutes 46 seconds West 78.61 feet to a point having Coordinates of X = 1,381,041.19 and Y = 564,415.59; South 88 degrees 33 minutes 09 seconds West 98.17 feet to a point having Coordinates of X = 1,380,943.05 and Y = 564,413.11; North 89 degrees 03 minutes 03 seconds West 147.31 feet to a point having Coordinates of X = 1,380,795.76 and Y = 564,415.55; North 83 degrees 55 minutes 45 seconds West 81.43 feet to an intersection point on the said boundary of A 8 RA SUA having Coordinates of X = 1,380,714.79 and Y = 564,424.16; Thence along the said boundary of A 8 RA SUA the following courses: South 05 degrees 44 minutes 36 seconds West 91.65 feet to a point having Coordinates of X = 1,380,705.62 and Y = 564,332.97; South 13 degrees 04 minutes 23 seconds West 126.97 feet to a point having Coordinates of X = 1,380,676.90 and Y = 564,209.29; South 24 degrees 00 minutes 46 seconds West 109.67 feet to a point having Coordinates of X = 1,380,632.27 and Y = 564,109.11; South 35 degrees 51 minutes 11 seconds West 124.77 feet to a point having Coordinates of X = 1,380,559.19 and Y = 564,007.98; South 50 degrees 28 minutes 26 seconds West 175.09 feet to a point having Coordinates of X = 1,380,424.14 and Y = 563,896.55; South 77 degrees 50 minutes 55 seconds West 215.92 feet to a point having Coordinates of X = 1,380,213.06 and Y = 563,851.10; South 89 degrees 15 minutes 24 seconds West 164.17 feet to a point having Coordinates of X = 1,380,048.90 and Y = 563,848.97; North 84 degrees 11 minutes 30 seconds West 161.46 feet to a point having Coordinates of X = 1,379,888.27 and Y = 563,865.31; North 70 degrees 48 minutes 43 seconds West 137.86 feet to a point having Coordinates of X = 1,379,758.07 and Y = 563,910.62; North 67 degrees 24 minutes 14 seconds West 241.26 feet to a point having Coordinates of X = 1,379,535.33 and Y = 564,003.32; North 58 degrees 39 minutes 19 seconds West 60.75 feet to an intersection point on the said boundary of 2275 feet RA SUA having Coordinates of X = 1,379,483.44 and Y = 564,034.92; Thence along the said 2275 feet RA SUA the following courses: North 76 degrees 28 minutes 07 seconds West 110.93 feet to a point having Coordinates of X = 1,379,375.59 and Y = 564,060.88; North 70 degrees 20 minutes 42 seconds West 202.29 feet to a point having Coordinates of X = 1,379,185.09 and Y = 564,128.92; North 67 degrees 56 minutes 08 seconds West 152.16 feet to a point having Coordinates of X = 1,379,044.07 and Y = 564,186.08; North 63 degrees 11 minutes 50 seconds West 142.33 feet to a point having Coordinates of X = 1,378,917.03 and Y = 564,250.26; North 52 degrees 23 minutes 18 seconds West 106.13 feet to a point having Coordinates of X = 1,378,832.96 and Y = 564,315.03; North 24 degrees 43 minutes 40 seconds West 45.61 feet to a point having Coordinates of X = 1,378,813.88 and Y = 564,356.46; North 18 degrees 33

minutes 22 seconds West 56.88 feet to a point having Coordinates of X = 1,378,795.78 and Y = 564,410.38; North 04 degrees 42 minutes 37 seconds West 56.14 feet to a point having Coordinates of X = 1,378,791.17 and Y = 564,466.33; North 13 degrees 54 minutes 48 seconds East 57.68 feet to a point having Coordinates of X = 1,378,805.04 and Y = 564,522.32; North 31 degrees 13 minutes 25 seconds East 37.44 feet to a point having Coordinates of X = 1,378,824.45 and Y = 564,554.34; North 59 degrees 14 minutes 22 seconds East 106.85 feet to a point having Coordinates of X = 1,378,916.27 and Y = 564,608.99; North 64 degrees 52 minutes 31 seconds East 139.48 feet to a point having Coordinates of X = 1,379,042.55 and Y = 564,668.21; North 70 degrees 10 minutes 08 seconds East 91.79 feet to an intersection point on the said boundary of A 8 RA SUA having Coordinates of X = 1,379,128.90 and Y = 564,699.35; Thence along the said boundary of A 8 RA SUA the following courses: North 36 degrees 27 minutes 19 seconds East 70.52 feet to a point having Coordinates of X = 1,379,170.80 and Y = 564,756.07; North 57 degrees 02 minutes 29 seconds East 66.71 feet to a point having Coordinates of X = 1,379,226.77 and Y = 564,792.36; North 74 degrees 17 minutes 21 seconds East 73.12 feet to a point having Coordinates of X = 1,379,297.16 and Y = 564,812.16; North 84 degrees 30 minutes 31 seconds East 96.76 feet to a point having Coordinates of X = 1,379,393.48 and Y = 564,821.42; South 81 degrees 47 minutes 02 seconds East 184.45 feet to a point having Coordinates of X = 1,379,576.04 and Y = 564,795.06; South 76 degrees 44 minutes 28 seconds East 283.32 feet to a point having Coordinates of X = 1,379,851.81 and Y = 564,730.08; South 83 degrees 01 minutes 08 seconds East 167.35 feet to a point having Coordinates of X = 1,380,017.92 and Y = 564,709.74; South 86 degrees 07 minutes 22 seconds East 168.00 feet to a point having Coordinates of X = 1,380,185.54 and Y = 564,698.38; South 85 degrees 56 minutes 51 seconds East 105.52 feet to an intersection point on the said boundary of 4150 feet RA SUA having Coordinates of X = 1,380,290.80 and Y = 564,690.92; Thence along the said boundary of 4150 feet RA SUA the following courses: North 33 degrees 04 minutes 24 seconds West 1.60 feet to a point having Coordinates of X = 1,380,289.93 and Y = 564,692.26; North 76 degrees 15 minutes 45 seconds West 62.32 feet to a point having Coordinates of X = 1,380,229.39 and Y = 564,707.06; North 61 degrees 37 minutes 23 seconds West 56.58 feet to a point having Coordinates of X = 1,380,179.61 and Y = 564,733.95; North 59 degrees 45 minutes 05 seconds West 37.38 feet to a point having Coordinates of X = 1,380,147.32 and Y = 564,752.78; North 89 degrees 10 minutes 41 seconds West 83.64 feet to a point having Coordinates of X = 1,380,063.69 and Y = 564,753.98; South 87 degrees 49 minutes 51 seconds West 87.45 feet to a point having Coordinates of X = 1,379,976.30 and Y = 564,750.67; South 88 degrees 56 minutes 07 seconds West 59.74 feet to a point having Coordinates of X = 1,379,916.57 and Y = 564,749.56; North 40 degrees 25 minutes 21 seconds West 214.68 feet to a point having Coordinates of X = 1,379,777.37 and Y = 564,912.99; North 12 degrees 12 minutes 34 seconds East 113.81 feet to a point having Coordinates of X = 1,379,801.44 and Y = 565,024.23; North 13 degrees 49 minutes 30 seconds East 134.79 feet to a point having Coordinates of X = 1,379,833.65 and Y = 565,155.12; North 19 degrees 13 minutes 55 seconds

East 82.06 feet to a point having Coordinates of X = 1,379,860.68 and Y = 565,232.60; North 20 degrees 51 minutes 23 seconds East 37.27 feet to a point having Coordinates of X = 1,379,873.95 and Y = 565,267.43; North 72 degrees 41 minutes 12 seconds West 17.61 feet to a point having Coordinates of X = 1,379,857.14 and Y = 565,272.67; North 11 degrees 32 degrees 40 minutes East 117.93 feet to a point having Coordinates of X = 1,379,880.74 and Y = 565,388.21; North 17 degrees 34 minutes 11 seconds East 97.99 feet to a point having Coordinates of X = 1,379,910.32 and Y = 565,481.63; North 14 degrees 44 minutes 42 seconds West 39.60 feet to a point having Coordinates of X = 1,379,900.24 and Y = 565,519.93; North 15 degrees 10 minutes 22 seconds West 111.26 feet to a point having Coordinates of X = 1,379,871.12 and Y = 565,627.31; North 20 degrees 01 minutes 33 seconds West 83.84 feet to a point having Coordinates of X = 1,379,842.41 and Y = 565,706.08; North 15 degrees 29 minutes 29 seconds West 82.33 feet to a point having Coordinates of X = 1,379,820.42 and Y = 565,785.42; North 11 degrees 24 minutes 33 seconds West 82.76 feet to a point having Coordinates of X = 1,379,804.05 and Y = 565,866.54; North 05 degrees 35 minutes 56 seconds West 68.88 feet to a point having Coordinates of X = 1,379,797.33 and Y = 565,935.09; North 03 degrees 58 minutes 28 seconds East 77.48 feet to a point having Coordinates of X = 1,379,802.70 and Y = 566,012.38; North 19 degrees 07 minutes 19 seconds East 67.77 feet to a point having Coordinates of X = 1,379,824.90 and Y = 566,076.41; North 37 degrees 26 minutes 51 seconds East 54.17 feet to a point having Coordinates of X = 1,379,857.84 and Y = 566,119.42; North 60 degrees 54 minutes 28 seconds East 60.75 feet to a point having Coordinates of X = 1,379,910.93 and Y = 566,148.96; North 82 degrees 23 minutes 10 seconds East 57.44 feet to a point having Coordinates of X = 1,379,967.86 and Y = 566,156.57; South 76 degrees 38 minutes 33 seconds East 55.28 feet to a point having Coordinates of X = 1,380,021.64 and Y = 566,143.80; South 55 degrees 49 minutes 03 seconds East 55.19 feet to a point having Coordinates of X = 1,380,067.30 and Y = 566,112.79; South 35 degrees 27 minutes 01 seconds East 64.74 feet to a point having Coordinates of X = 1,380,104.85 and Y = 566,060.05; South 29 degrees 36 minutes 58 seconds East 111.92 feet to a point having Coordinates of X = 1,380,160.16 feet and Y = 565,962.75; South 24 degrees 18 minutes 55 seconds East 141.27 feet to a point having Coordinates of X = 1,380,218.33 and Y = 565,834.01; South 27 degrees 24 minutes 03 seconds East 73.57 feet to a point having Coordinates of X = 1,380,252.19 and Y = 565,768.69; South 38 degrees 02 minutes 20 seconds East 109.51 feet to a point having Coordinates of X = 1,380,319.67 and Y = 565,682.44; South 76 degrees 40 minutes 18 seconds East 173.34 feet to a point having Coordinates of X = 1,380,488.34 and Y = 565,642.48; South 80 degrees 03 minutes 05 seconds East 128.04 feet to a point having Coordinates of X = 1,380,614.45 and Y = 565,620.36; South 76 degrees 51 minutes 12 seconds East 108.56 feet to a point having Coordinates of X = 1,380,720.16 and Y = 565,595.67; South 64 degrees 29 minutes 03 seconds East 75.88 feet to the point of beginning, and containing approximately 7.231 acres, the total claimable waterbottoms containing approximately **1,157 acres**, all as more particularly outlined on a plat on file in the Office of Mineral Resources, Department of Natural

Resources. All bearings, distances and coordinates are based on Louisiana Coordinate System of 1927, (North or South Zone), where applicable.

NOTE: The above description of the Tract nominated for lease has been provided and corrected, where required, exclusively by the nomination party. Any mineral lease selected from this Tract and awarded by the Louisiana State Mineral Board shall be without warranty of any kind, either express, implied, or statutory, including, but not limited to, the implied warranties of merchantability and fitness for a particular purpose. Should the mineral lease awarded by the Louisiana State Mineral Board be subsequently modified, cancelled or abrogated due to the existence of conflicting leases, operating agreements, private claims or other future obligations or conditions which may affect all or any portion of the leased Tract, it shall not relieve the Lessee of the obligation to pay any bonus due thereon to the Louisiana State Mineral Board, nor shall the Louisiana State Mineral Board be obligated to refund any consideration paid by the Lessor prior to such modification, cancellation, or abrogation, including, but not limited to, bonuses, rentals and royalties.

Applicant: CYPRESS ENERGY CORPORATION

Bidder	Cash Payment	Price/ Acre	Rental	Oil	Gas	Other

Legend

 07090032
Active_Leases

DOQQ2004



TRACT 39359 - Calcasieu Parish, Louisiana

All of the lands now or formerly constituting the beds and bottoms of all water bodies of every nature and description as to which title is vested in the State of Louisiana, together with all islands arising therein and other lands formed by accretion or by reliction, where allowed by law, excepting tax adjudicated lands, and not presently under mineral lease on September 12, 2007, situated in Calcasieu Parish, Louisiana, and more particularly described as follows: Beginning at a point having Coordinates of X = 1,254,367.51 and Y = 571,579.80; thence South 7,048.80 feet to a point having Coordinates of X = 1,254,367.51 and Y = 564,531.00; thence West 3,570.51 feet to the Northeast corner of State Lease No. 18808 having Coordinates of X = 1,250,797.00 and Y = 564,531.00; thence along the boundary of said State Lease No. 18808 West 250.00 feet to the Northeast corner of State Lease No. 18819 having Coordinates of X = 1,250,547.00 and Y = 564,531.00; thence continue West 3,806.00 feet along the boundary of said State Lease No. 18819 to its Northwest corner having Coordinates of X = 1,246,741.00 and Y = 564,531.00; thence continue West 1,900.73 feet to a point having Coordinates of X = 1,244,840.27 and Y = 564,531.00; thence North 8,632.53 feet to a point having Coordinates of X = 1,244,840.27 and Y = 573,163.53; thence East approximately 4,176 feet to a point on the west line of State Lease No. 15155, as amended; thence along the boundary of said State Lease No. 15155 the following courses: Southerly along the boundary between the State of Texas and Louisiana to a point having a Coordinate of X = 1,248,319.91, South approximately 500 feet to a point having Coordinates of X = 1,248,319.91 and Y = 571,579.80 and East 2,680.09 feet to its Southeast corner and the Southwest corner of State Lease No. 15726, as amended having Coordinates of X = 1,251,000.00 and Y = 571,579.80; thence continue East 703.41 feet to the Southeast corner of said State Lease No. 15726 having Coordinates of X = 1,251,703.41 and Y = 571,579.80; thence continue East 2,664.10 to the point of beginning, **LESS AND EXCEPT** all that portion of the above described tract lying within the boundaries of the Sabine Island Wildlife Management Area, containing approximately **63 acres**, **LESS AND EXCEPT** that portion thereof, if any, located West of the boundary line between the States of Texas and Louisiana as determined by the report of the Special Master and adjudicated by the Supreme Court of the United States in litigation styled **Texas v. Louisiana, et al No. 36 Original**, or as otherwise approved by said court, all as more particularly outlined on a plat on file in the Office of Mineral Resources, Department of Natural Resources. All bearings, distances and coordinates are based on Louisiana Coordinate System of 1927, (North or South Zone), where applicable.

NOTE: The above description of the Tract nominated for lease has been provided and corrected, where required, exclusively by the nomination party. Any mineral lease selected from this Tract and awarded by the Louisiana State Mineral Board shall be without warranty of any kind, either express, implied, or statutory, including, but not limited to, the implied warranties of merchantability and fitness for a particular purpose. Should the mineral lease awarded by the Louisiana State Mineral

Board be subsequently modified, cancelled or abrogated due to the existence of conflicting leases, operating agreements, private claims or other future obligations or conditions which may affect all or any portion of the leased Tract, it shall not relieve the Lessee of the obligation to pay any bonus due thereon to the Louisiana State Mineral Board, nor shall the Louisiana State Mineral Board be obligated to refund any consideration paid by the Lessor prior to such modification, cancellation, or abrogation, including, but not limited to, bonuses, rentals and royalties.

NOTE: This tract is located within the boundaries of a wildlife management area or refuge and any operations conducted thereon in conjunction with this mineral lease may be subject to rules and regulations promulgated by the Department of Wildlife and Fisheries for the protection of fish, birds and other wildlife including, but not necessarily limited to, the following:

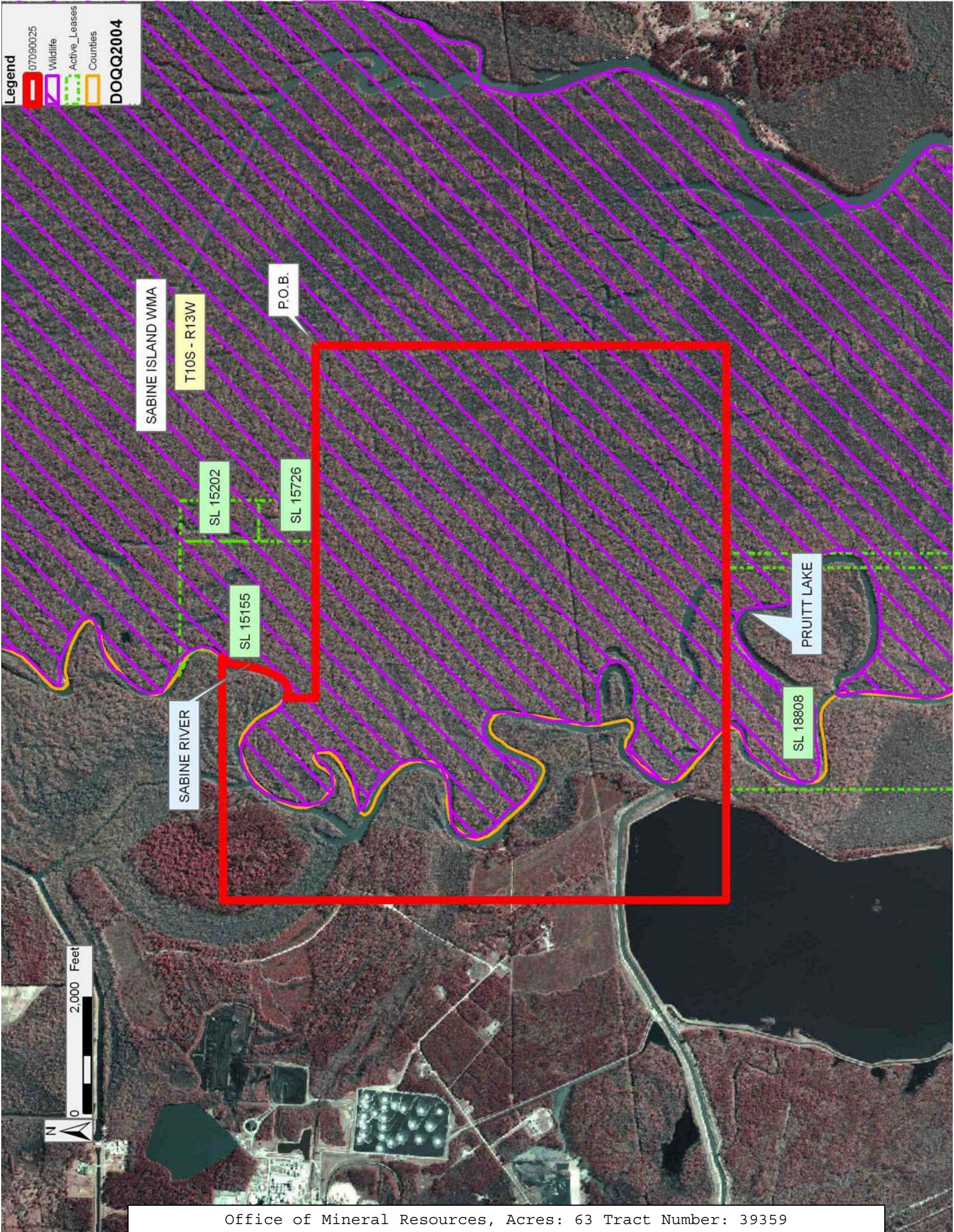
1. No activities will be allowed without written authorization from the Louisiana Department of Wildlife and Fisheries. All projects will be coordinated and approved by the appropriate WMA Supervisor prior to any activities on the wildlife management area.
2. Proposed projects will be evaluated on a case by case basis. Modifications to proposed projects may be required including, but not limited to, access routes, spoil placement, well sites, flow lines and other appurtenant structures required by the Louisiana Department of Wildlife and Fisheries.
3. Compensatory mitigation will be required to offset unavoidable wetland impacts.
4. Removal of all structures, facilities, and equipment will be required within 120 days of abandonment unless otherwise agreed to by the Department of Wildlife and Fisheries.
5. No activities will be allowed during the hunting season unless approved by the Department.
6. Compliance with the said WMA regulations will be required unless otherwise specified by the Department.
7. Prior to submitting applications for wetland permits to Federal and State permitting agencies the lease holder shall coordinate project details with the Louisiana Department of Wildlife and Fisheries, Fur and Refuge Division. Contact person for the Department will be Mike Windham at (504) 568-5886.

Applicant: BARKER ENERGY

Bidder	Cash Payment	Price/ Acre	Rental	Oil	Gas	Other

Legend

- 07090025
- Wildlife
- Active_Leases
- Counties
- DOQQ2004



TRACT 39360 - Calcasieu Parish, Louisiana

All of the lands now or formerly constituting the beds and bottoms of all water bodies of every nature and description as to which title is vested in the State of Louisiana, together with all islands arising therein and other lands formed by accretion or by reliction, where allowed by law, excepting tax adjudicated lands, and not presently under mineral lease on September 12, 2007, situated in Calcasieu Parish, Louisiana, and more particularly described as follows: Beginning at a point having Coordinates of X = 1,256,823.89 and Y = 559,178.00; thence South 16 degrees 11 minutes 30 seconds East 7,074.49 feet to a point having Coordinates of X = 1,258,796.61 and Y = 552,384.12; thence West 10,816.33 feet to a point having Coordinates of X = 1,247,980.28 and Y = 552,384.13; thence North 6,793.88 feet to a point on the South line of State Lease No. 18808 and State Lease No. 18819 having Coordinates of X = 1,247,980.28 and Y = 559,178.00; thence along the boundaries of said State Lease No. 18808 and said State Lease No. 18819 East 2,566.72 feet to the Southeast corner of said State Lease No. 18819 having Coordinates of X = 1,250,547.00 and Y = 559,178.00; thence continue East along the boundary of said State Lease No. 18808 East 250.00 feet to its Southeast corner having Coordinates of X = 1,250,797.00 and Y = 559,178.00; thence continue East 6,026.89 feet to the point of beginning, **LESS AND EXCEPT** all that portion of the above described tract lying within the boundaries of the Sabine Island Wildlife Management Area, containing approximately **109 acres**, **LESS AND EXCEPT** that portion thereof, if any, located West of the boundary line between the States of Texas and Louisiana as determined by the report of the Special Master and adjudicated by the Supreme Court of the United States in litigation styled **Texas v. Louisiana, et al No. 36 Original**, or as otherwise approved by said court, all as more particularly outlined on a plat on file in the Office of Mineral Resources, Department of Natural Resources. All bearings, distances and coordinates are based on Louisiana Coordinate System of 1927, (North or South Zone), where applicable.

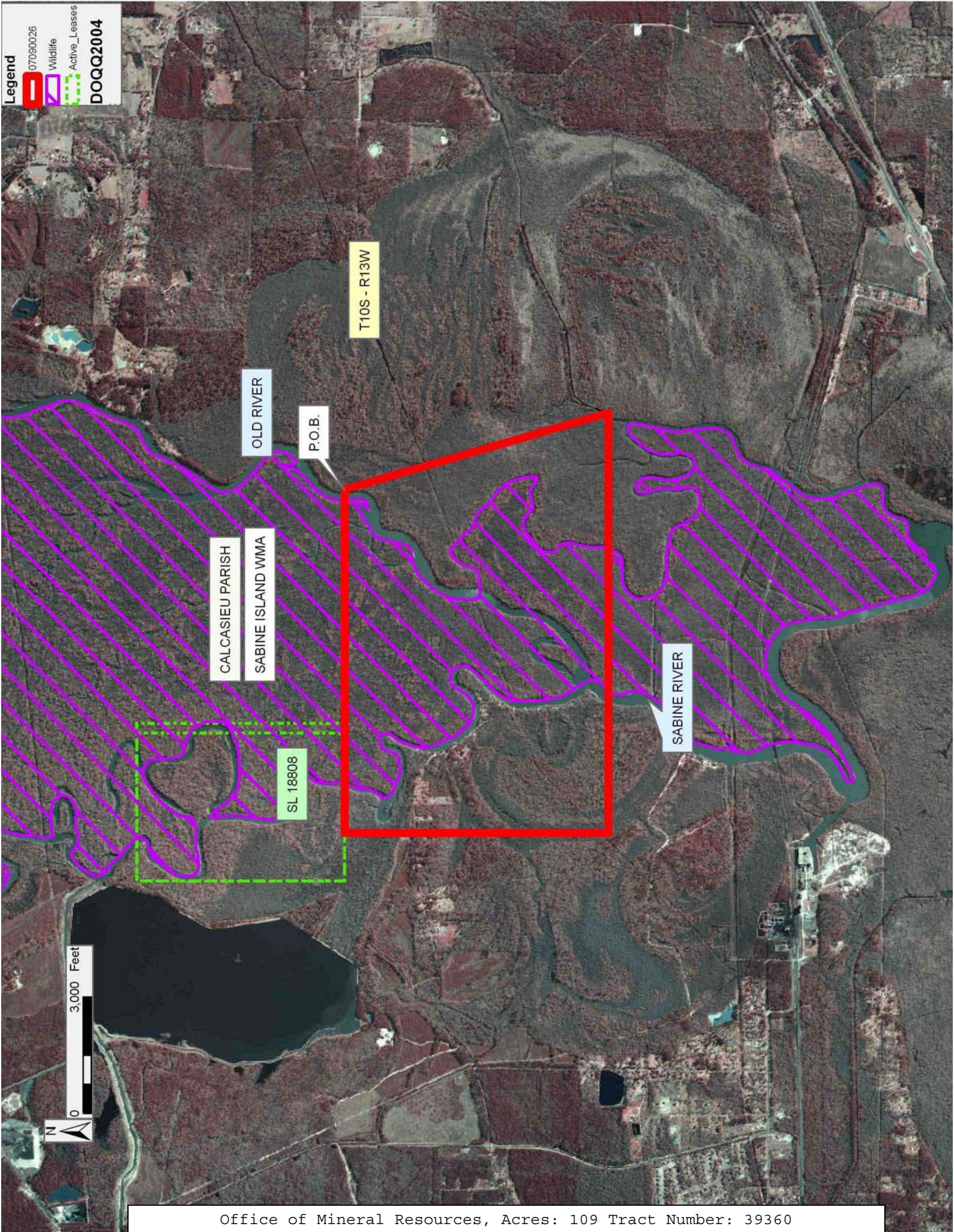
NOTE: The above description of the Tract nominated for lease has been provided and corrected, where required, exclusively by the nomination party. Any mineral lease selected from this Tract and awarded by the Louisiana State Mineral Board shall be without warranty of any kind, either express, implied, or statutory, including, but not limited to, the implied warranties of merchantability and fitness for a particular purpose. Should the mineral lease awarded by the Louisiana State Mineral Board be subsequently modified, cancelled or abrogated due to the existence of conflicting leases, operating agreements, private claims or other future obligations or conditions which may affect all or any portion of the leased Tract, it shall not relieve the Lessee of the obligation to pay any bonus due thereon to the Louisiana State Mineral Board, nor shall the Louisiana State Mineral Board be obligated to refund any consideration paid by the Lessor prior to such modification, cancellation, or abrogation, including, but not limited to, bonuses, rentals and royalties.

Applicant: BARKER ENERGY

Bidder	Cash Payment	Price/ Acre	Rental	Oil	Gas	Other

Legend

07090026
Wildlife
Active_Leases
DOQQ2004



TRACT 39361 - Calcasieu Parish, Louisiana

All of the lands now or formerly constituting the beds and bottoms of all water bodies of every nature and description as to which title is vested in the State of Louisiana, together with all islands arising therein and other lands formed by accretion or by reliction, where allowed by law, excepting tax adjudicated lands, and not presently under mineral lease on September 12, 2007, situated in Calcasieu Parish, Louisiana, and more particularly described as follows: Beginning at a point having Coordinates of X = 1,258,796.61 and Y = 552,384.13; thence South 9,054.454 feet to a point having Coordinates of X = 1,258,796.61 and Y = 543,329.68; thence West 10,816.33 feet to a point having Coordinates of X = 1,247,980.28 and Y = 543,329.68; thence North 9,054.45 feet to a point having Coordinates of X = 1,247,980.28 and Y = 552,384.13; thence East 10,816.33 feet to the point of beginning, **LESS AND EXCEPT** all that portion of the above described tract lying within the boundaries of the Sabine Island Wildlife Management Area, containing approximately **146 acres**, **LESS AND EXCEPT** that portion thereof, if any, located West of the boundary line between the States of Texas and Louisiana as determined by the report of the Special Master and adjudicated by the Supreme Court of the United States in litigation styled **Texas v. Louisiana, et al No. 36 Original**, or as otherwise approved by said court, all as more particularly outlined on a plat on file in the Office of Mineral Resources, Department of Natural Resources. All bearings, distances and coordinates are based on Louisiana Coordinate System of 1927, (North or South Zone), where applicable.

NOTE: The above description of the Tract nominated for lease has been provided and corrected, where required, exclusively by the nomination party. Any mineral lease selected from this Tract and awarded by the Louisiana State Mineral Board shall be without warranty of any kind, either express, implied, or statutory, including, but not limited to, the implied warranties of merchantability and fitness for a particular purpose. Should the mineral lease awarded by the Louisiana State Mineral Board be subsequently modified, cancelled or abrogated due to the existence of conflicting leases, operating agreements, private claims or other future obligations or conditions which may affect all or any portion of the leased Tract, it shall not relieve the Lessee of the obligation to pay any bonus due thereon to the Louisiana State Mineral Board, nor shall the Louisiana State Mineral Board be obligated to refund any consideration paid by the Lessor prior to such modification, cancellation, or abrogation, including, but not limited to, bonuses, rentals and royalties.

Applicant: BARKER ENERGY

Bidder	Cash Payment	Price/ Acre	Rental	Oil	Gas	Other

Legend

07090027

Wildlife

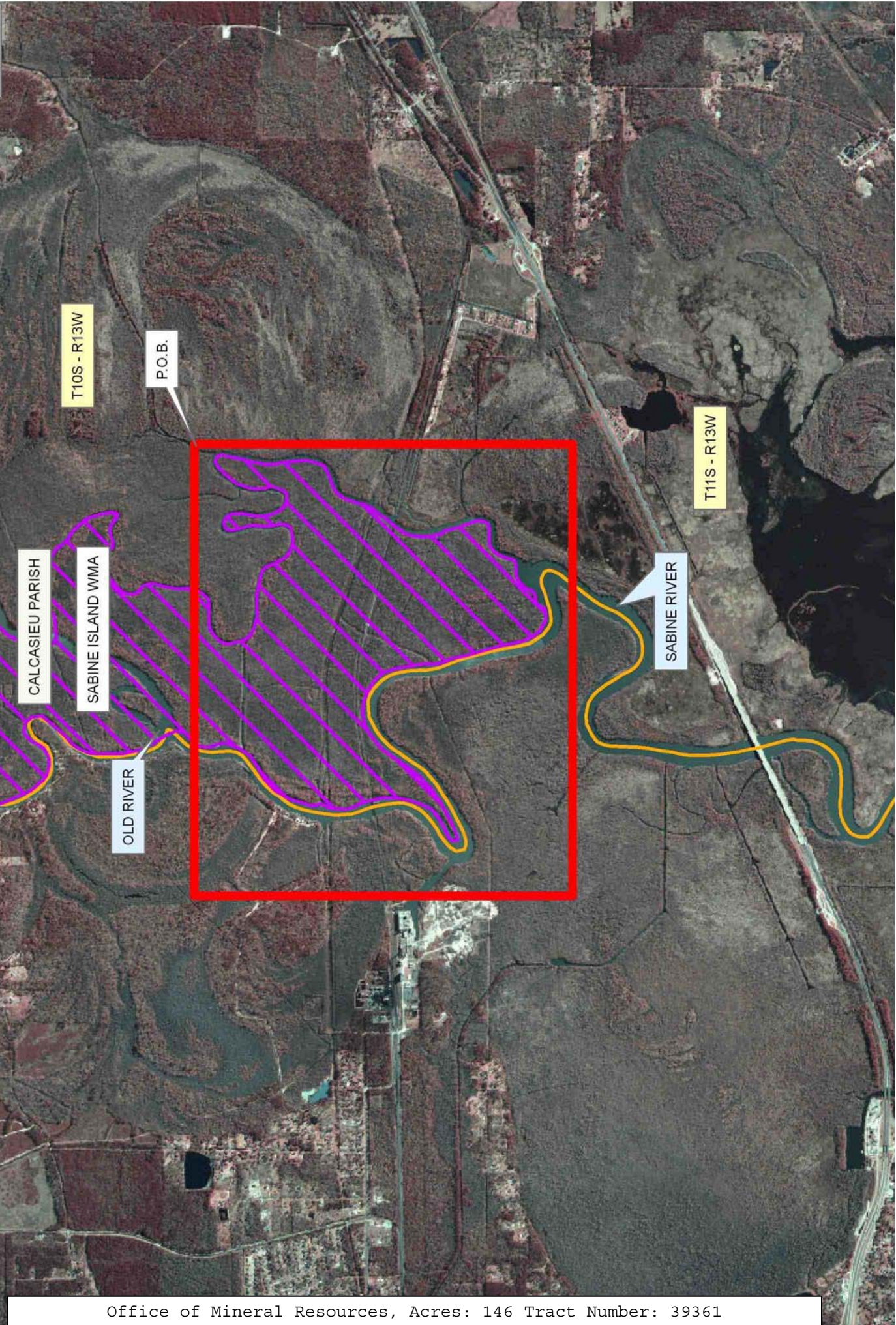
Counties

DOQQ2004

0

3,000 Feet

N



TRACT 39362 - St. Mary Parish, Louisiana

All of the lands now or formerly constituting the beds and bottoms of all water bodies of every nature and description as to which title is vested in the State of Louisiana, together with all islands arising therein and other lands formed by accretion or by reliction, where allowed by law, excepting tax adjudicated lands, and not presently under mineral lease on September 12, 2007, situated in St. Mary Parish, Louisiana, and more particularly described as follows: Beginning at a point having Coordinates of X = 2,044,178.93 and Y = 347,836.33; thence North 32 degrees 15 minutes 05 seconds West approximately 1,175 feet to a point on the Easternmost boundary of State Mineral Lease 341, as amended, the following courses; Easterly approximately 87 feet, thence Northerly approximately 1848 feet, thence Northwesterly approximately 312 feet, thence Northerly approximately 293 feet to a point having Coordinates of X = 2,043,396.37 and Y = 351,125.88; thence East approximately 5,415.00 feet to a point having Coordinates of X = 2,048,810.92 and Y = 351,125.88; thence South 00 degrees 52 minutes 32 seconds East 1,965.65 feet to the Northwest corner of State Mineral Lease 19330 having Coordinates of X = 2,048,840.97 and Y = 349,160.46; thence South 00 degrees 52 minutes 33 seconds East 1,324.28 feet on the West boundary of said State Mineral Lease 19330 to a point having Coordinates of X = 2,048,861.21 and Y = 347,836.33; thence West 4,682.28 feet to the Point of Beginning, **LESS AND EXCEPT** that portion, if any, of said State Mineral Lease 341, as amended and State Mineral Lease 19330, which may lie within the above described tract, containing approximately **72.51 acres**, all as more particularly outlined on a plat on file in the Office of Mineral Resources, Department of Natural Resources. All bearings, distances and coordinates are based on Louisiana Coordinate System of 1927, (North or South Zone), where applicable.

NOTE: The above description of the Tract nominated for lease has been provided and corrected, where required, exclusively by the nomination party. Any mineral lease selected from this Tract and awarded by the Louisiana State Mineral Board shall be without warranty of any kind, either express, implied, or statutory, including, but not limited to, the implied warranties of merchantability and fitness for a particular purpose. Should the mineral lease awarded by the Louisiana State Mineral Board be subsequently modified, cancelled or abrogated due to the existence of conflicting leases, operating agreements, private claims or other future obligations or conditions which may affect all or any portion of the leased Tract, it shall not relieve the Lessee of the obligation to pay any bonus due thereon to the Louisiana State Mineral Board, nor shall the Louisiana State Mineral Board be obligated to refund any consideration paid by the Lessor prior to such modification, cancellation, or abrogation, including, but not limited to, bonuses, rentals and royalties.

NOTE: The acreage contained herein, being a portion of State Lease 335, 340 or 341, was subject to the litigation between Texas, Inc. and the State of Louisiana which resulted in the Global Settlement Agreement compromise whereby this acreage was reassigned through various mesne

conveyances to the successors of William T. Burton, the original lessee of said leases from the State, (hereinafter otherwise referred to as the "ORRO's) and approved by the State Mineral Board, becoming effective April 25, 1994. Under separate agreement by and between the State and the ORRO's, certain obligations were to be met within a specified time frame or the ORRO's became obligated to release the reassigned acreage back to the State. The obligations were not met within the specified time frame and the State began securing the releases for the acreage contained herein. Due to the extremely large number of ORRO's, their nationwide and worldwide dispersal, the unreliability of available contact information and/or a present inability to obtain full, requisite cooperation, the State has, as yet, not secured releases from certain ORRO's representing approximately a .0258336 interest in this acreage. Accordingly, although the State is diligently pursuing the requisite releases affecting this acreage (the furnishing of which the ORRO's representing the stated decimal interest are obligated), nevertheless, a party obtaining a mineral lease from the State of Louisiana on the acreage contained herein shall do so with full knowledge that a complete release of all specific ORRO interest in this acreage has not as yet been secured and shall assume a business risk commensurate with the unsecured interest release.

NOTE: The State of Louisiana does hereby reserve, and this lease shall be subject to, the imprescriptible right of surface use in the nature of a servitude in favor of the Department of Natural Resources, including its Offices and Commissions, for the sole purpose of implementing, constructing, servicing and maintaining approved coastal zone management and/or restoration projects. Utilization of any and all rights derived under this lease by the mineral lessee, its agents, successors or assigns, shall not interfere with nor hinder the reasonable surface use by the Department of Natural Resources, its Offices or Commissions, as herein above reserved.

Applicant: LAND MANAGEMENT SERVICES, L.L.C.

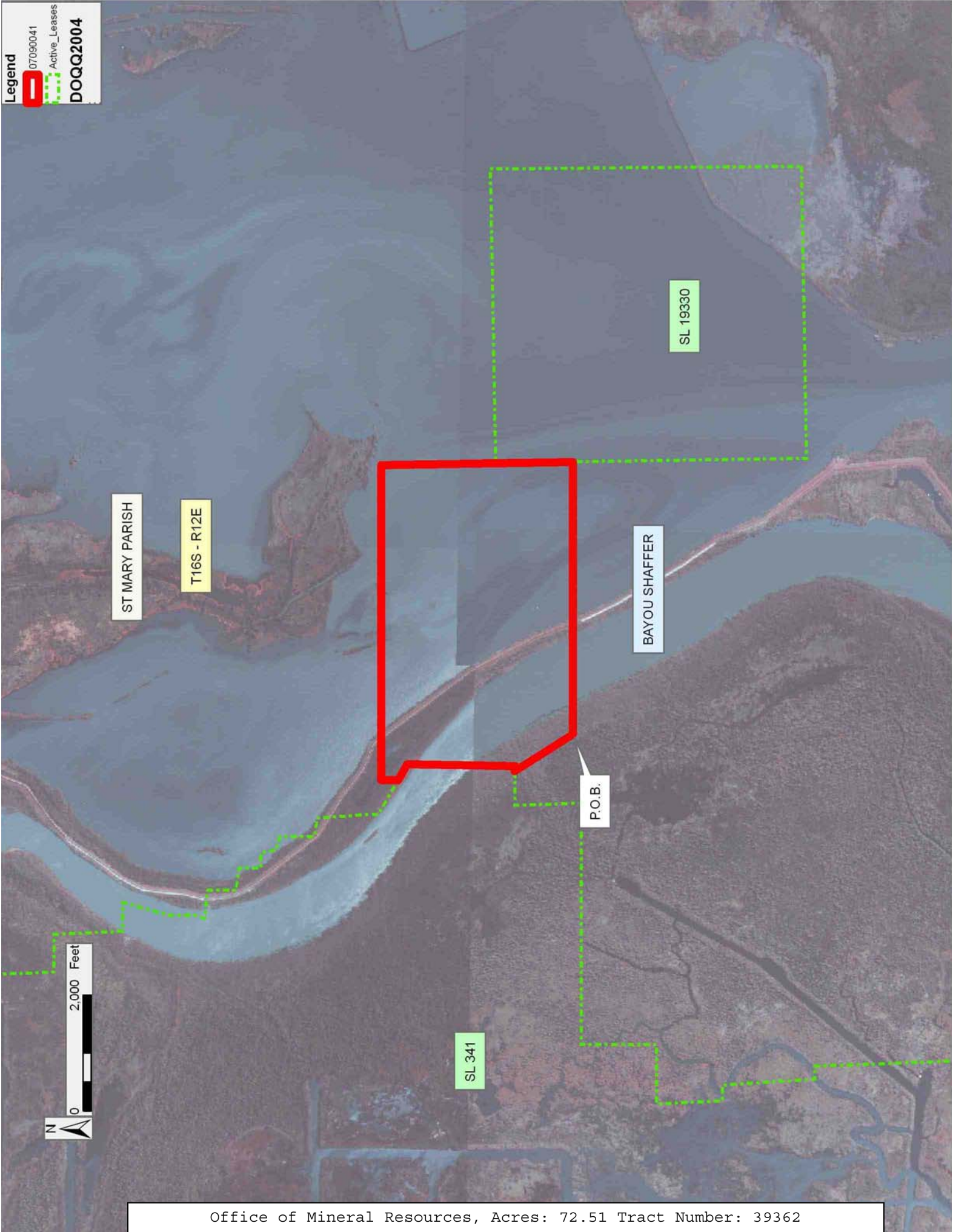
Bidder	Cash Payment	Price/ Acre	Rental	Oil	Gas	Other

Legend

 07090041

 Active_Leases

DOQQ2004



TRACT 39363 - St. Mary Parish, Louisiana

All of the lands now or formerly constituting the beds and bottoms of all water bodies of every nature and description as to which title is vested in the State of Louisiana, together with all islands arising therein and other lands formed by accretion or by reliction, where allowed by law, excepting tax adjudicated lands, and not presently under mineral lease on September 12, 2007, situated in St. Mary Parish, Louisiana, and more particularly described as follows: Beginning at a point having Coordinates of X = 2,044,178.93 and Y = 347,836.33; thence East 4,682.28 feet to a point on the West boundary of State Mineral Lease 19330 having Coordinates of X = 2,048,861.21 and Y = 347,836.33, thence South 00 degrees 52 minutes 33 seconds East 4,026.58 feet on the West boundary of said State Mineral Lease 19330 to its Southwest corner, also being the Northwest corner of State Mineral Lease 19331 having Coordinates of X = 2,048,922.76 and Y = 343,810.22; thence West 3,765.64 feet to a point having Coordinates of X = 2,045,157.12 and Y = 343,810.22; thence North 2,475.87 feet to a point having Coordinates of X = 2,045,157.12 and Y = 346,286.09; thence North 32 degrees 15 minutes 06 seconds West 1,833.06 feet to the Point of Beginning, **LESS AND EXCEPT** that portion, if any, of said State Mineral Lease Nos. 19330 and 19331, which may lie within the above described tract, containing approximately **106.83 acres**, all as more particularly outlined on a plat on file in the Office of Mineral Resources, Department of Natural Resources. All bearings, distances and coordinates are based on Louisiana Coordinate System of 1927, (North or South Zone), where applicable.

NOTE: The above description of the Tract nominated for lease has been provided and corrected, where required, exclusively by the nomination party. Any mineral lease selected from this Tract and awarded by the Louisiana State Mineral Board shall be without warranty of any kind, either express, implied, or statutory, including, but not limited to, the implied warranties of merchantability and fitness for a particular purpose. Should the mineral lease awarded by the Louisiana State Mineral Board be subsequently modified, cancelled or abrogated due to the existence of conflicting leases, operating agreements, private claims or other future obligations or conditions which may affect all or any portion of the leased Tract, it shall not relieve the Lessee of the obligation to pay any bonus due thereon to the Louisiana State Mineral Board, nor shall the Louisiana State Mineral Board be obligated to refund any consideration paid by the Lessor prior to such modification, cancellation, or abrogation, including, but not limited to, bonuses, rentals and royalties.

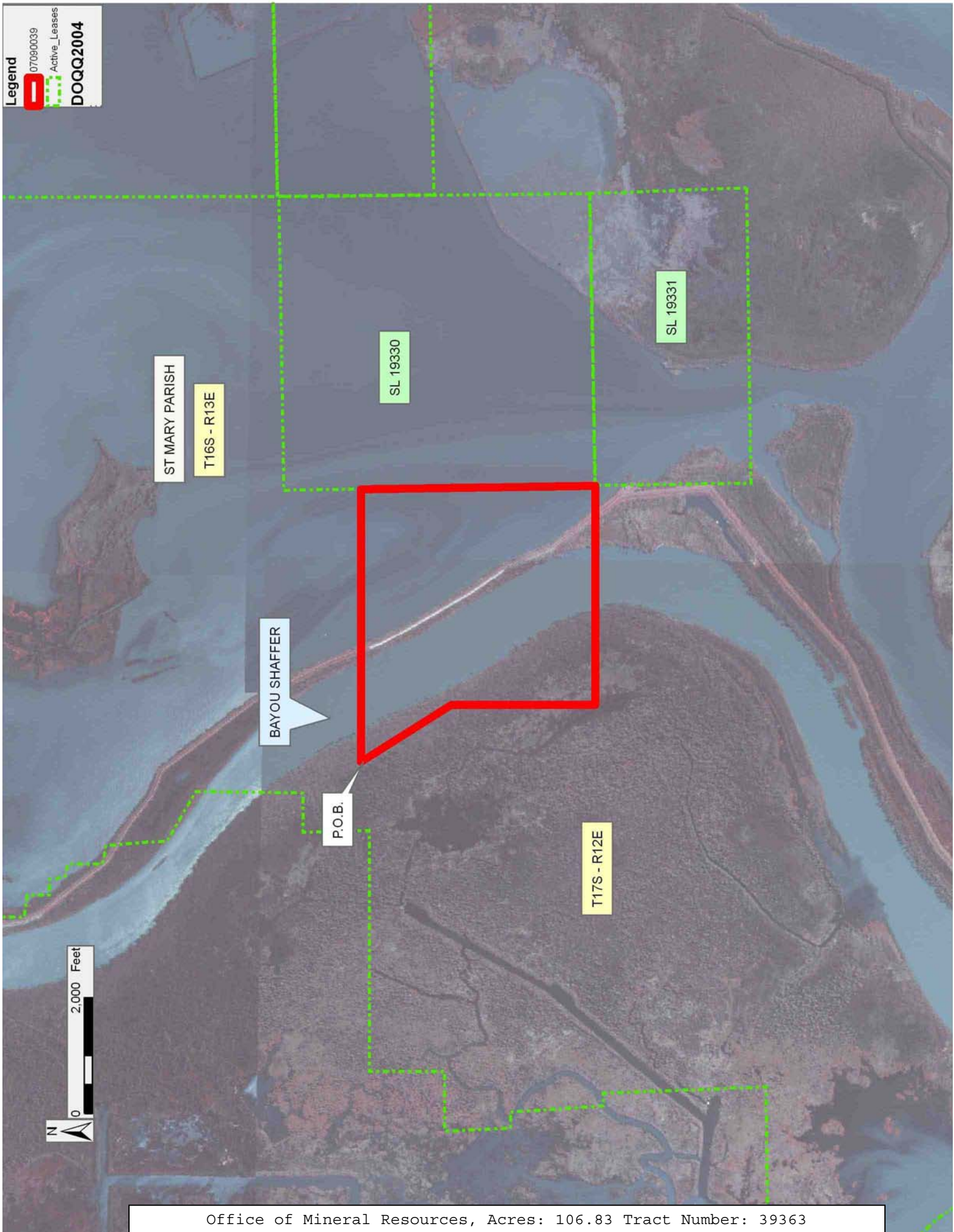
NOTE: The acreage contained herein, being a portion of State Lease 335, 340 or 341, was subject to the litigation between Texas, Inc. and the State of Louisiana which resulted in the Global Settlement Agreement compromise whereby this acreage was reassigned through various mesne conveyances to the successors of William T. Burton, the original lessee of said leases from the State, (hereinafter otherwise referred to as the "ORRO's) and approved by the State Mineral Board, becoming effective April

25, 1994. Under separate agreement by and between the State and the ORRO's, certain obligations were to be met within a specified time frame or the ORRO's became obligated to release the reassigned acreage back to the State. The obligations were not met within the specified time frame and the State began securing the releases for the acreage contained herein. Due to the extremely large number of ORRO's, their nationwide and worldwide dispersal, the unreliability of available contact information and/or a present inability to obtain full, requisite cooperation, the State has, as yet, not secured releases from certain ORRO's representing approximately a .0258336 interest in this acreage. Accordingly, although the State is diligently pursuing the requisite releases affecting this acreage (the furnishing of which the ORRO's representing the stated decimal interest are obligated), nevertheless, a party obtaining a mineral lease from the State of Louisiana on the acreage contained herein shall do so with full knowledge that a complete release of all specific ORRO interest in this acreage has not as yet been secured and shall assume a business risk commensurate with the unsecured interest release.

NOTE: The State of Louisiana does hereby reserve, and this lease shall be subject to, the imprescriptible right of surface use in the nature of a servitude in favor of the Department of Natural Resources, including its Offices and Commissions, for the sole purpose of implementing, constructing, servicing and maintaining approved coastal zone management and/or restoration projects. Utilization of any and all rights derived under this lease by the mineral lessee, its agents, successors or assigns, shall not interfere with nor hinder the reasonable surface use by the Department of Natural Resources, its Offices or Commissions, as herein above reserved.

Applicant: LAND MANAGEMENT SERVICES, L.L.C.

Bidder	Cash Payment	Price/ Acre	Rental	Oil	Gas	Other



TRACT 39364 - St. Mary and Terrebonne Parishes, Louisiana

All of the lands now or formerly constituting the beds and bottoms of all water bodies of every nature and description as to which title is vested in the State of Louisiana, together with all islands arising therein and other lands formed by accretion or by reliction, where allowed by law, excepting tax adjudicated lands, and not presently under mineral lease on September 12, 2007, situated in St. Mary and Terrebonne Parishes, Louisiana, and more particularly described as follows: Beginning at a point having Coordinates of X = 2,043,211.50 and Y = 337,020.23; thence North 6,789.99 feet to a point having Coordinates of X = 2,043,211.50 and Y = 343,810.22, thence East 5,711.26 feet to the Northwest corner of State Mineral Lease 19331, also being the Southwest corner of State Mineral Lease 19330 having Coordinates of X = 2,048,922.76 and Y = 343,810.22; thence South 00 degrees 52 minutes 35 seconds East 2,678.66 feet on the West boundary of said State Mineral Lease 19331 to its Southwest corner having Coordinates of X = 2,048,963.73 and Y = 341,131.88; thence South 54 degrees 26 minutes 35 seconds West 7,070.63 feet to the Point of Beginning, **LESS AND EXCEPT** that portion, if any, of said State Mineral Lease Nos. 19330 and 19331, which may lie within the above described tract, containing approximately **172.85 acres**, all as more particularly outlined on a plat on file in the Office of Mineral Resources, Department of Natural Resources. All bearings, distances and coordinates are based on Louisiana Coordinate System of 1927, (North or South Zone), where applicable.

NOTE: The above description of the Tract nominated for lease has been provided and corrected, where required, exclusively by the nomination party. Any mineral lease selected from this Tract and awarded by the Louisiana State Mineral Board shall be without warranty of any kind, either express, implied, or statutory, including, but not limited to, the implied warranties of merchantability and fitness for a particular purpose. Should the mineral lease awarded by the Louisiana State Mineral Board be subsequently modified, cancelled or abrogated due to the existence of conflicting leases, operating agreements, private claims or other future obligations or conditions which may affect all or any portion of the leased Tract, it shall not relieve the Lessee of the obligation to pay any bonus due thereon to the Louisiana State Mineral Board, nor shall the Louisiana State Mineral Board be obligated to refund any consideration paid by the Lessor prior to such modification, cancellation, or abrogation, including, but not limited to, bonuses, rentals and royalties.

NOTE: The acreage contained herein, being a portion of State Lease 335, 340 or 341, was subject to the litigation between Texas, Inc. and the State of Louisiana which resulted in the Global Settlement Agreement compromise whereby this acreage was reassigned through various mesne conveyances to the successors of William T. Burton, the original lessee of said leases from the State, (hereinafter otherwise referred to as the "ORRO's) and approved by the State Mineral Board, becoming effective April 25, 1994. Under separate agreement by and between the State and the

ORRO's, certain obligations were to be met within a specified time frame or the ORRO's became obligated to release the reassigned acreage back to the State. The obligations were not met within the specified time frame and the State began securing the releases for the acreage contained herein. Due to the extremely large number of ORRO's, their nationwide and worldwide dispersal, the unreliability of available contact information and/or a present inability to obtain full, requisite cooperation, the State has, as yet, not secured releases from certain ORRO's representing approximately a .0258336 interest in this acreage. Accordingly, although the State is diligently pursuing the requisite releases affecting this acreage (the furnishing of which the ORRO's representing the stated decimal interest are obligated), nevertheless, a party obtaining a mineral lease from the State of Louisiana on the acreage contained herein shall do so with full knowledge that a complete release of all specific ORRO interest in this acreage has not as yet been secured and shall assume a business risk commensurate with the unsecured interest release.

NOTE: The State of Louisiana does hereby reserve, and this lease shall be subject to, the imprescriptible right of surface use in the nature of a servitude in favor of the Department of Natural Resources, including its Offices and Commissions, for the sole purpose of implementing, constructing, servicing and maintaining approved coastal zone management and/or restoration projects. Utilization of any and all rights derived under this lease by the mineral lessee, its agents, successors or assigns, shall not interfere with nor hinder the reasonable surface use by the Department of Natural Resources, its Offices or Commissions, as herein above reserved.

Applicant: LAND MANAGEMENT SERVICES, L.L.C.

Bidder	Cash Payment	Price/ Acre	Rental	Oil	Gas	Other

Legend

- 07090040
- Active_Leases
- Counties
- DOQQ2004

