

TRACT 39396 - Calcasieu Parish, Louisiana

A portion of all lands, including the beds and bottoms of all navigable and non-navigable waters within the geographical boundaries of that part of the Sabine Island Wildlife Management Area originally leased from the State of Louisiana by Act dated July 31, 1968 and renewed July 31, 1993 to be effective until July 31, 2018 and recorded in the Conveyance Records of Calcasieu parish, Louisiana, and not under mineral lease to the State as of September 12, 2007, more particularly set forth as follows: Beginning at a point having Coordinates of X = 1,254,367.51 and Y = 580,458.04; thence South 8,878.24 feet to a point having Coordinates of X = 1,254,367.51 and Y = 571,579.80; thence West 2,664.10 feet to the Southeast corner of State Lease No. 15726, as amended having Coordinates of X = 1,251,703.41 and Y = 571,579.80; thence along the boundary of said State Lease No. 15726 North 970.20 feet to its Northeast corner and the Southeast corner of State Lease No. 15202, as amended having Coordinates of X = 1,251,703.41 and Y = 572,550.00; thence along the boundary of said State Lease No. 15202 the following courses: North 1,349.80 feet to a point having Coordinates of X = 1,251,703.41 and Y = 573,899.80 and West 703.41 feet to its Northwest corner and the Northeast corner of State Lease No. 15155, as amended having Coordinates of X = 1,251,000.00 and Y = 573,899.80; thence along the boundary of said State Lease No. 15155 the following courses: West approximately 2,261 feet to a point on the Texas-Louisiana boundary and Southerly along the meanders of said Texas-Louisiana boundary to a point having a Coordinate of Y = 573,163.53; thence West approximately 4,176 feet to a point having Coordinates of X = 1,244,840.27 and Y = 573,163.53; thence North 7,294.51 feet to a point having Coordinates of X = 1,244,840.27 and Y = 580,458.04; thence East 9,527.24 feet to the point of beginning, **LESS AND EXCEPT** all that portion of the above described tract lying outside the boundaries of the Sabine Island Wildlife Management Area, containing approximately **768 acres**, all as more particularly outlined on a plat on file in the Office of Mineral Resources, Department of Natural Resources. All bearings, distances and coordinates are based on Louisiana Coordinate System of 1927, (South Zone).

NOTE: This tract is located within the boundaries of a wildlife management area or refuge and any operations conducted thereon in conjunction with this mineral lease may be subject to rules and regulations promulgated by the Department of Wildlife and Fisheries for the protection of fish, birds and other wildlife including, but not necessarily limited to, the following:

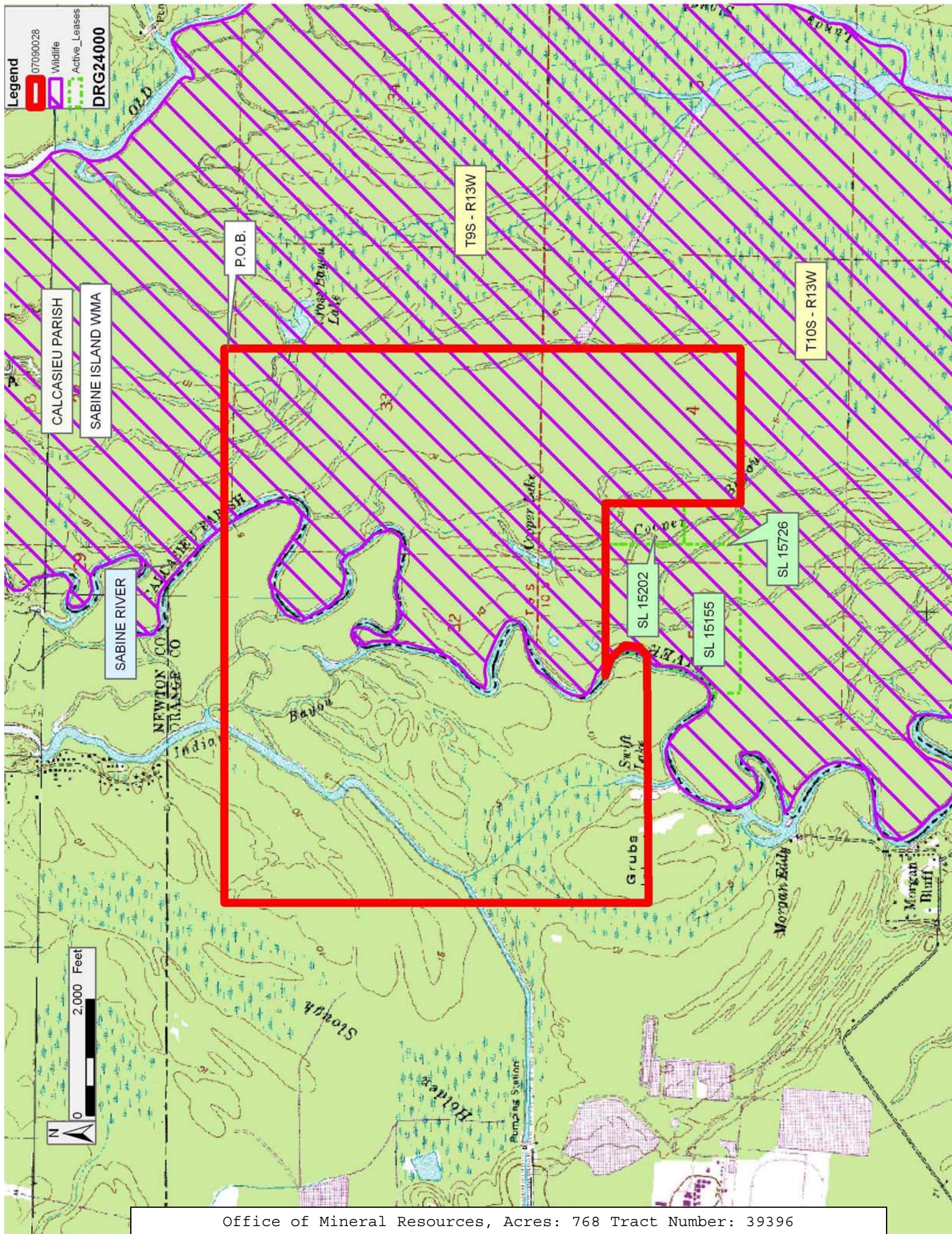
1. No activities will be allowed without written authorization of the Louisiana Department of Wildlife and Fisheries. All projects will be coordinated and approved by the Sabine Island WMA Supervisor prior to any activities on the wildlife management area.
2. Proposed projects will be evaluated on a case by case basis. Modifications to proposed project features including but not limited to access routes, well sites, flowlines and appurtenant structures may be required by the Louisiana Department of Wildlife and Fisheries.

3. Compliance with the Sabine Island WMA regulations will be required unless otherwise specified by the Department.
4. Compensatory mitigation will be required to offset unavoidable habitat impacts.
5. Removal of all structures, facilities and equipment will be required within 120 days of abandonment unless otherwise agreed to by the Department.
6. No activities will be allowed during the hunting season unless approved by the department.
7. Prior to submitting applications for wetland permits to Federal and State permitting agencies, the leaseholder shall coordinate project details with the Department. Contact person for the Department will be Mike Windham at (504) 568-5886 or (225) 765-2807.

NOTE: The above description of the Tract nominated for lease has been provided and corrected, where required, exclusively by the nomination party. Any mineral lease selected from this Tract and awarded by the Louisiana State Mineral Board shall be without warranty of any kind, either express, implied, or statutory, including, but not limited to, the implied warranties of merchantability and fitness for a particular purpose. Should the mineral lease awarded by the Louisiana State Mineral Board be subsequently modified, cancelled or abrogated due to the existence of conflicting leases, operating agreements, private claims or other future obligations or conditions which may affect all or any portion of the leased Tract, it shall not relieve the Lessee of the obligation to pay any bonus due thereon to the Louisiana State Mineral Board, nor shall the Louisiana State Mineral Board be obligated to refund any consideration paid by the Lessor prior to such modification, cancellation, or abrogation, including, but not limited to, bonuses, rentals and royalties.

Applicant: BARKER ENERGY

Bidder	Cash Payment	Price/Acre	Rental	Oil	Gas	Other



TRACT 39397 - Calcasieu Parish, Louisiana

A portion of all lands, including the beds and bottoms of all navigable and non-navigable waters within the geographical boundaries of that part of the Sabine Island Wildlife Management Area originally leased from the State of Louisiana by Act dated July 31, 1968 and renewed July 31, 1993 to be effective until July 31, 2018 and recorded in the Conveyance Records of Calcasieu parish, Louisiana, and not under mineral lease to the State as of September 12, 2007, more particularly set forth as follows: Beginning at a point having Coordinates of X = 1,254,367.51 and Y = 571,579.80; thence South 7,048.80 feet to a point having Coordinates of X = 1,254,367.51 and Y = 564,531.00; thence West 3,570.51 feet to the Northeast corner of State Lease No. 18808 having Coordinates of X = 1,250,797.00 and Y = 564,531.00; thence along the boundary of said State Lease No. 18808 West 250.00 feet to the Northeast corner of State Lease No. 18819 having Coordinates of X = 1,250,547.00 and Y = 564,531.00; thence continue West 3,806.00 feet along the boundary of said State Lease No. 18819 to its Northwest corner having Coordinates of X = 1,246,741.00 and Y = 564,531.00; thence continue West 1,900.73 feet to a point having Coordinates of X = 1,244,840.27 and Y = 564,531.00; thence North 8,632.53 feet to a point having Coordinates of X = 1,244,840.27 and Y = 573,163.53; thence East approximately 4,176 feet to a point on the west line of State Lease No. 15155, as amended; thence along the boundary of said State Lease No. 15155 the following courses: Southerly along the boundary between the State of Texas and Louisiana to a point having a Coordinate of X = 1,248,319.91, South approximately 500 feet to a point having Coordinates of X = 1,248,319.91 and Y = 571,579.80 and East 2,680.09 feet to its Southeast corner and the Southwest corner of State Lease No. 15726, as amended having Coordinates of X = 1,251,000.00 and Y = 571,579.80; thence continue East 703.41 feet to the Southeast corner of said State Lease No. 15726 having Coordinates of X = 1,251,703.41 and Y = 571,579.80; thence continue East 2,664.10 to the point of beginning, **LESS AND EXCEPT** all that portion of the above described tract lying outside the boundaries of the Sabine Island Wildlife Management Area, containing approximately **1194 acres**, all as more particularly outlined on a plat on file in the Office of Mineral Resources, Department of Natural Resources. All bearings, distances and coordinates are based on Louisiana Coordinate System of 1927, (South Zone).

NOTE: This tract is located within the boundaries of a wildlife management area or refuge and any operations conducted thereon in conjunction with this mineral lease may be subject to rules and regulations promulgated by the Department of Wildlife and Fisheries for the protection of fish, birds and other wildlife including, but not necessarily limited to, the following:

1. No activities will be allowed without written authorization of the Louisiana Department of Wildlife and Fisheries. All projects will be coordinated and approved by the Sabine Island WMA Supervisor prior to any activities on the wildlife management area.

2. Proposed projects will be evaluated on a case by case basis. Modifications to proposed project features including but not limited to access routes, well sites, flowlines and appurtenant structures may be required by the Louisiana Department of Wildlife and Fisheries.
3. Compliance with the Sabine Island WMA regulations will be required unless otherwise specified by the Department.
4. Compensatory mitigation will be required to offset unavoidable habitat impacts.
5. Removal of all structures, facilities and equipment will be required within 120 days of abandonment unless otherwise agreed to by the Department.
6. No activities will be allowed during the hunting season unless approved by the department.
7. Prior to submitting applications for wetland permits to Federal and State permitting agencies, the leaseholder shall coordinate project details with the Department. Contact person for the Department will be Mike Windham at (504) 568-5886 or (225) 765-2807.

NOTE: The above description of the Tract nominated for lease has been provided and corrected, where required, exclusively by the nomination party. Any mineral lease selected from this Tract and awarded by the Louisiana State Mineral Board shall be without warranty of any kind, either express, implied, or statutory, including, but not limited to, the implied warranties of merchantability and fitness for a particular purpose. Should the mineral lease awarded by the Louisiana State Mineral Board be subsequently modified, cancelled or abrogated due to the existence of conflicting leases, operating agreements, private claims or other future obligations or conditions which may affect all or any portion of the leased Tract, it shall not relieve the Lessee of the obligation to pay any bonus due thereon to the Louisiana State Mineral Board, nor shall the Louisiana State Mineral Board be obligated to refund any consideration paid by the Lessor prior to such modification, cancellation, or abrogation, including, but not limited to, bonuses, rentals and royalties.

Applicant: BARKER ENERGY

Bidder	Cash Payment	Price/Acre	Rental	Oil	Gas	Other

TRACT 39398 - Calcasieu Parish, Louisiana

A portion of all lands, including the beds and bottoms of all navigable and non-navigable waters within the geographical boundaries of that part of the Sabine Island Wildlife Management Area originally leased from the State of Louisiana by Act dated July 31, 1968 and renewed July 31, 1993 to be effective until July 31, 2018 and recorded in the Conveyance Records of Calcasieu parish, Louisiana, and not under mineral lease to the State as of September 12, 2007, more particularly set forth as follows: Beginning at a point having Coordinates of X = 1,256,823.89 and Y = 559,178.00; thence South 16 degrees 11 minutes 30 seconds East 7,074.49 feet to a point having Coordinates of X = 1,258,796.61 and Y = 552,384.12; thence West 10,816.33 feet to a point having Coordinates of X = 1,247,980.28 and Y = 552,384.13; thence North 6,793.88 feet to a point on the South line of State Lease No. 18808 and State Lease No. 18819 having Coordinates of X = 1,247,980.28 and Y = 559,178.00; thence along the boundaries of said State Lease No. 18808 and said State Lease No. 18819 East 2,566.72 feet to the Southeast corner of said State Lease No. 18819 having Coordinates of X = 1,250,547.00 and Y = 559,178.00; thence continue East along the boundary of said State Lease No. 18808 East 250.00 feet to its Southeast corner having Coordinates of X = 1,250,797.00 and Y = 559,178.00; thence continue East 6,026.89 feet to the point of beginning, **LESS AND EXCEPT** all that portion of the above described tract lying outside the boundaries of the Sabine Island Wildlife Management Area, containing approximately **675 acres**, all as more particularly outlined on a plat on file in the Office of Mineral Resources, Department of Natural Resources. All bearings, distances and coordinates are based on Louisiana Coordinate System of 1927, (South Zone).

NOTE: This tract is located within the boundaries of a wildlife management area or refuge and any operations conducted thereon in conjunction with this mineral lease may be subject to rules and regulations promulgated by the Department of Wildlife and Fisheries for the protection of fish, birds and other wildlife including, but not necessarily limited to, the following:

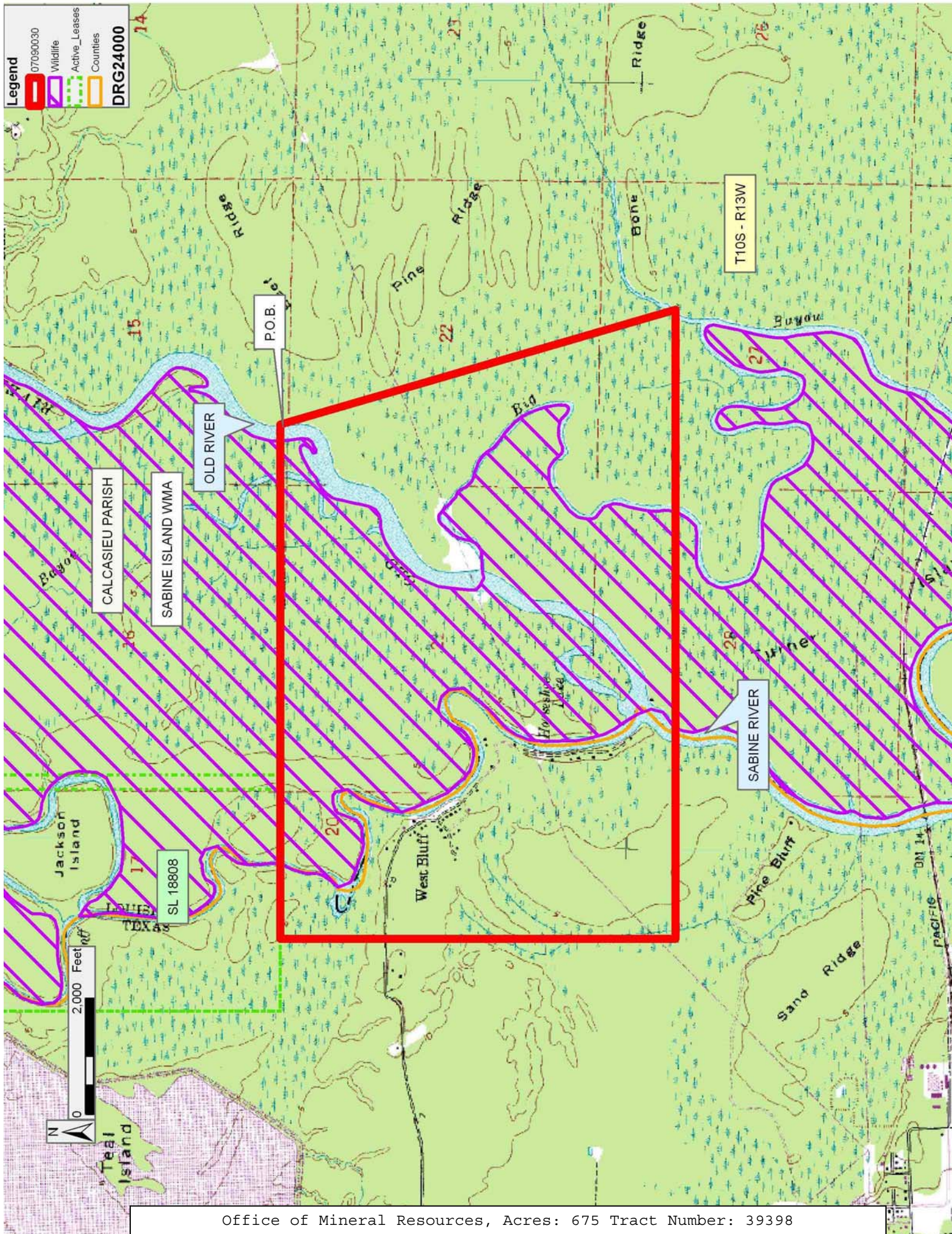
1. No activities will be allowed without written authorization of the Louisiana Department of Wildlife and Fisheries. All projects will be coordinated and approved by the Sabine Island WMA Supervisor prior to any activities on the wildlife management area.
2. Proposed projects will be evaluated on a case by case basis. Modifications to proposed project features including but not limited to access routes, well sites, flowlines and appurtenant structures may be required by the Louisiana Department of Wildlife and Fisheries.
3. Compliance with the Sabine Island WMA regulations will be required unless otherwise specified by the Department.
4. Compensatory mitigation will be required to offset unavoidable habitat impacts.
5. Removal of all structures, facilities and equipment will be required within 120 days of abandonment unless otherwise agreed to by the Department.

6. No activities will be allowed during the hunting season unless approved by the department.
7. Prior to submitting applications for wetland permits to Federal and State permitting agencies, the leaseholder shall coordinate project details with the Department. Contact person for the Department will be Mike Windham at (504) 568-5886 or (225) 765-2807.

NOTE: The above description of the Tract nominated for lease has been provided and corrected, where required, exclusively by the nomination party. Any mineral lease selected from this Tract and awarded by the Louisiana State Mineral Board shall be without warranty of any kind, either express, implied, or statutory, including, but not limited to, the implied warranties of merchantability and fitness for a particular purpose. Should the mineral lease awarded by the Louisiana State Mineral Board be subsequently modified, cancelled or abrogated due to the existence of conflicting leases, operating agreements, private claims or other future obligations or conditions which may affect all or any portion of the leased Tract, it shall not relieve the Lessee of the obligation to pay any bonus due thereon to the Louisiana State Mineral Board, nor shall the Louisiana State Mineral Board be obligated to refund any consideration paid by the Lessor prior to such modification, cancellation, or abrogation, including, but not limited to, bonuses, rentals and royalties.

Applicant: BARKER ENERGY

Bidder	Cash Payment	Price/Acre	Rental	Oil	Gas	Other



TRACT 39399 - Calcasieu Parish, Louisiana

A portion of all lands, including the beds and bottoms of all navigable and non-navigable waters within the geographical boundaries of that part of the Sabine Island Wildlife Management Area originally leased from the State of Louisiana by Act dated July 31, 1968 and renewed July 31, 1993 to be effective until July 31, 2018 and recorded in the Conveyance Records of Calcasieu parish, Louisiana, and not under mineral lease to the State as of September 12, 2007, more particularly set forth as follows: Beginning at a point having Coordinates of X = 1,258,796.61 and Y = 552,384.12; thence South 9,054.44 feet to a point having Coordinates of X = 1,258,796.61 and Y = 543,329.68; thence West 10,816.33 feet to a point having Coordinates of X = 1,247,980.28 and Y = 543,329.68; thence North 9,054.45 feet to a point having Coordinates of X = 1,247,980.28 and Y = 552,384.13; thence East 10,816.33 feet to the point of beginning, **LESS AND EXCEPT** all that portion of the above described tract lying outside the boundaries of the Sabine Island Wildlife Management Area, containing approximately **847 acres**, all as more particularly outlined on a plat on file in the Office of Mineral Resources, Department of Natural Resources. All bearings, distances and coordinates are based on Louisiana Coordinate System of 1927, (South Zone).

NOTE: This tract is located within the boundaries of a wildlife management area or refuge and any operations conducted thereon in conjunction with this mineral lease may be subject to rules and regulations promulgated by the Department of Wildlife and Fisheries for the protection of fish, birds and other wildlife including, but not necessarily limited to, the following:

1. No activities will be allowed without written authorization of the Louisiana Department of Wildlife and Fisheries. All projects will be coordinated and approved by the Sabine Island WMA Supervisor prior to any activities on the wildlife management area.
2. Proposed projects will be evaluated on a case by case basis. Modifications to proposed project features including but not limited to access routes, well sites, flowlines and appurtenant structures may be required by the Louisiana Department of Wildlife and Fisheries.
3. Compliance with the Sabine Island WMA regulations will be required unless otherwise specified by the Department.
4. Compensatory mitigation will be required to offset unavoidable habitat impacts.
5. Removal of all structures, facilities and equipment will be required within 120 days of abandonment unless otherwise agreed to by the Department.
6. No activities will be allowed during the hunting season unless approved by the department.
7. Prior to submitting applications for wetland permits to Federal and State permitting agencies, the leaseholder shall coordinate project details with the Department. Contact person for the Department will be Mike Windham at (504) 568-5886 or (225) 765-2807.

NOTE: The above description of the Tract nominated for lease has been provided and corrected, where required, exclusively by the nomination party. Any mineral lease selected from this Tract and awarded by the Louisiana State Mineral Board shall be without warranty of any kind, either express, implied, or statutory, including, but not limited to, the implied warranties of merchantability and fitness for a particular purpose. Should the mineral lease awarded by the Louisiana State Mineral Board be subsequently modified, cancelled or abrogated due to the existence of conflicting leases, operating agreements, private claims or other future obligations or conditions which may affect all or any portion of the leased Tract, it shall not relieve the Lessee of the obligation to pay any bonus due thereon to the Louisiana State Mineral Board, nor shall the Louisiana State Mineral Board be obligated to refund any consideration paid by the Lessor prior to such modification, cancellation, or abrogation, including, but not limited to, bonuses, rentals and royalties.

Applicant: BARKER ENERGY

Bidder	Cash Payment	Price/ Acre	Rental	Oil	Gas	Other

Legend

 07090031

 Wildlife

DRG24000



DRG24000

T10S - R13W

P.O.B.

SABINE ISLAND WMA

SABINE RIVER

