

**TRACT 38564 - Cameron Parish, Louisiana**

All of the lands now or formerly constituting the beds and bottoms of all water bodies of every nature and description the title of which vests in the State of Louisiana, together with all islands arising therein and other lands formed by accretion or by reliction, where allowed by law, excepting tax adjudicated lands, and not presently under mineral lease and cross hatched on September 13, 2006, situated in Cameron Parish, Louisiana, and more particularly described as follows: Beginning at a point having Coordinates of X = 1,533,674.39 and Y = 438,499.99; thence North 88 degrees 50 minutes 02 seconds West 8,055.65 feet to a point having Coordinates of X = 1,525,620.41 and Y = 438,663.92; thence North 01 degrees 42 minutes 53 seconds East 12,621.95 feet to a point having Coordinates of X = 1,525,998.09 and Y = 451,280.21; thence South 89 degrees 45 minutes 33 seconds East 7,773.58 feet to a point having Coordinates of X = 1,533,771.61 and Y = 451,247.53; thence South 00 degrees 26 minutes 13 seconds West 12,747.92 feet to the point of beginning, containing approximately **1,970 acres**, all as more particularly outlined on a plat on file in the Office of Mineral Resources, Department of Natural Resources. All bearings, distances and coordinates are based on Louisiana Coordinate System of 1927, (North or South Zone), where applicable.

NOTE: The above description of the Tract nominated for lease has been provided and corrected, where required, exclusively by the nomination party. Any mineral lease selected from this Tract and awarded by the Louisiana State Mineral Board shall be without warranty of any kind, either express, implied, or statutory, including, but not limited to, the implied warranties of merchantability and fitness for a particular purpose. Should the mineral lease awarded by the Louisiana State Mineral Board be subsequently modified, cancelled or abrogated due to the existence of conflicting leases, operating agreements, private claims or other future obligations or conditions which may affect all or any portion of the leased Tract, it shall not relieve the Lessee of the obligation to pay any bonus due thereon to the Louisiana State Mineral Board, nor shall the Louisiana State Mineral Board be obligated to refund any consideration paid by the Lessor prior to such modification, cancellation, or abrogation, including, but not limited to, bonuses, rentals and royalties.

NOTE: The State of Louisiana does hereby reserve, and this lease shall be subject to, the imprescriptible right of surface use in the nature of a servitude in favor of the Department of Natural Resources, including its Offices and Commissions, for the sole purpose of implementing, constructing, servicing and maintaining approved coastal zone management and/or restoration projects. Utilization of any and all rights derived under this lease by the mineral lessee, its agents, successors or assigns, shall not interfere with nor hinder the reasonable surface use by the Department of Natural Resources, its Offices or Commissions, as herein above reserved.

Applicant: GHJ LAND SERVICES, L.L.C.

Bidder	Cash Payment	Price/Acre	Rental	Oil	Gas	Other

Legend

-  060900028
-  06090028water

**DOQQ2004**



CAMERON PARISH

T13S - R4W

GRAND LAKE

P.O.B.

**TRACT 38565 - Cameron Parish, Louisiana**

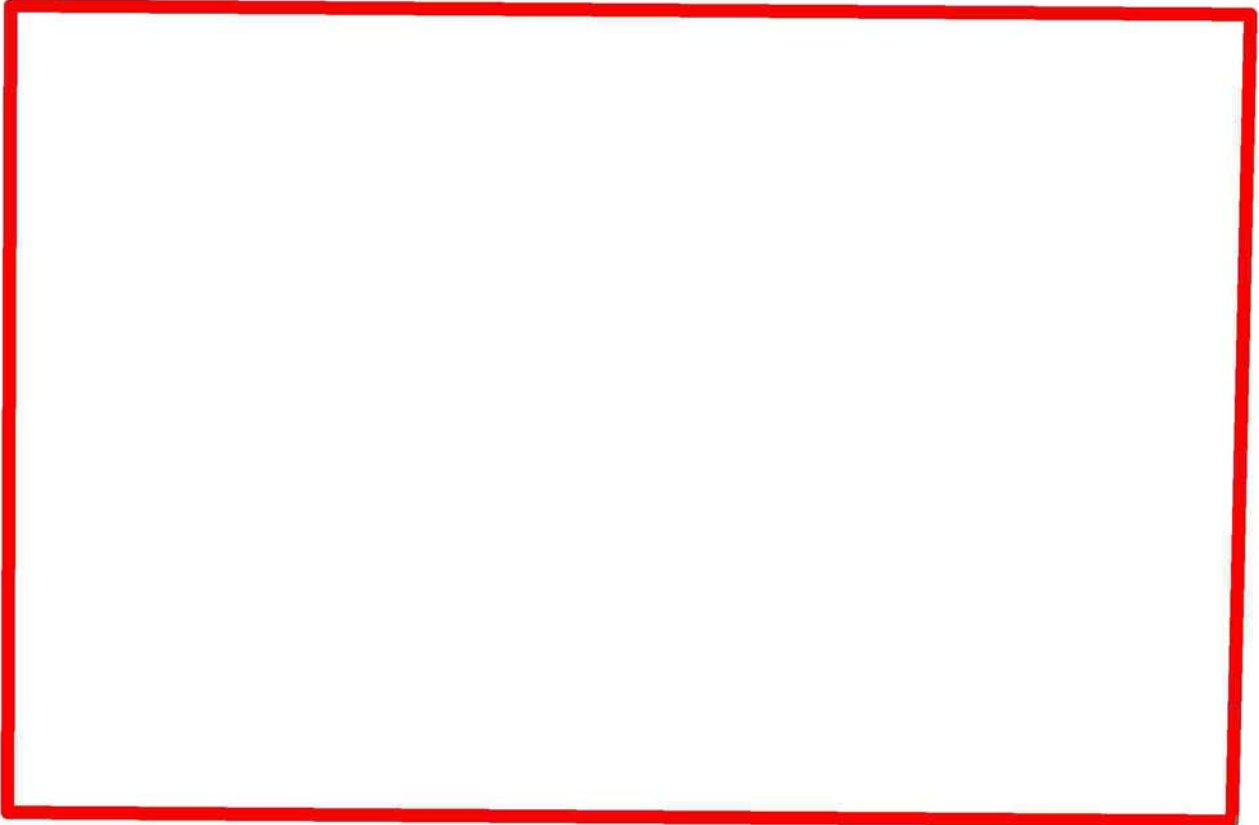
All of the lands now or formerly constituting the beds and bottoms of all water bodies of every nature and description the title of which vests in the State of Louisiana, together with all islands arising therein and other lands formed by accretion or by reliction, where allowed by law, excepting tax adjudicated lands, and not presently under mineral lease and cross hatched on September 13, 2006, situated in Cameron Parish, Louisiana, and more particularly described as follows: Beginning at a point having Coordinates of X = 1,533,674.39 and Y = 438,499.99; thence North 00 degrees 26 minutes 13 seconds East 12,747.92 feet to a point having Coordinates of X = 1,533,771.61 and Y = 451,247.53; thence South 89 degrees 45 minutes 33 seconds East 8,400.00 feet to a point having Coordinates of X = 1,542,171.53 and Y = 451,212.22; thence South 00 degrees 26 minutes 13 seconds West 12,907.58 feet to a point having Coordinates of X = 1,542,073.09 and Y = 438,305.02; thence North 88 degrees 40 minutes 13 seconds West 8,400.96 feet to the point of beginning, containing approximately **2,473.65 acres**, all as more particularly outlined on a plat on file in the Office of Mineral Resources, Department of Natural Resources. All bearings, distances and coordinates are based on Louisiana Coordinate System of 1927, (North or South Zone), where applicable.

NOTE: The above description of the Tract nominated for lease has been provided and corrected, where required, exclusively by the nomination party. Any mineral lease selected from this Tract and awarded by the Louisiana State Mineral Board shall be without warranty of any kind, either express, implied, or statutory, including, but not limited to, the implied warranties of merchantability and fitness for a particular purpose. Should the mineral lease awarded by the Louisiana State Mineral Board be subsequently modified, cancelled or abrogated due to the existence of conflicting leases, operating agreements, private claims or other future obligations or conditions which may affect all or any portion of the leased Tract, it shall not relieve the Lessee of the obligation to pay any bonus due thereon to the Louisiana State Mineral Board, nor shall the Louisiana State Mineral Board be obligated to refund any consideration paid by the Lessor prior to such modification, cancellation, or abrogation, including, but not limited to, bonuses, rentals and royalties.

NOTE: The State of Louisiana does hereby reserve, and this lease shall be subject to, the imprescriptible right of surface use in the nature of a servitude in favor of the Department of Natural Resources, including its Offices and Commissions, for the sole purpose of implementing, constructing, servicing and maintaining approved coastal zone management and/or restoration projects. Utilization of any and all rights derived under this lease by the mineral lessee, its agents, successors or assigns, shall not interfere with nor hinder the reasonable surface use by the Department of Natural Resources, its Offices or Commissions, as herein above reserved.

Applicant: GHJ LAND SERVICES, L.L.C.

Bidder	Cash Payment	Price/Acre	Rental	Oil	Gas	Other



CAMERON PARISH

GRAND LAKE

P.O.B.

**TRACT 38566 - Cameron Parish, Louisiana**

All of the lands now or formerly constituting the beds and bottoms of all water bodies of every nature and description the title of which vests in the State of Louisiana, together with all islands arising therein and other lands formed by accretion or by reliction, where allowed by law, excepting tax adjudicated lands, and not presently under mineral lease and cross hatched on September 13, 2006, situated in Cameron Parish, Louisiana, and more particularly described as follows: Beginning at a point having Coordinates of X = 1,550,469.60 and Y = 438,156.88; thence North 88 degrees 59 minutes 21 seconds West 8,397.82 feet to a point having Coordinates of X = 1,542,073.09 and Y = 438,305.02; thence North 00 degrees 26 minutes 13 seconds East 12,907.58 feet to a point having Coordinates of X = 1,542,171.53 and Y = 451,212.22; thence South 89 degrees 45 minutes 33 seconds East 8,397.45 feet to a point having Coordinates of X = 1,550,568.91 and Y = 451,176.92; thence South 00 degrees 26 minutes 13 seconds West 13,020.43 feet to the point of beginning, containing approximately **2,499.17 acres**, all as more particularly outlined on a plat on file in the Office of Mineral Resources, Department of Natural Resources. All bearings, distances and coordinates are based on Louisiana Coordinate System of 1927, (North or South Zone), where applicable.

NOTE: The above description of the Tract nominated for lease has been provided and corrected, where required, exclusively by the nomination party. Any mineral lease selected from this Tract and awarded by the Louisiana State Mineral Board shall be without warranty of any kind, either express, implied, or statutory, including, but not limited to, the implied warranties of merchantability and fitness for a particular purpose. Should the mineral lease awarded by the Louisiana State Mineral Board be subsequently modified, cancelled or abrogated due to the existence of conflicting leases, operating agreements, private claims or other future obligations or conditions which may affect all or any portion of the leased Tract, it shall not relieve the Lessee of the obligation to pay any bonus due thereon to the Louisiana State Mineral Board, nor shall the Louisiana State Mineral Board be obligated to refund any consideration paid by the Lessor prior to such modification, cancellation, or abrogation, including, but not limited to, bonuses, rentals and royalties.

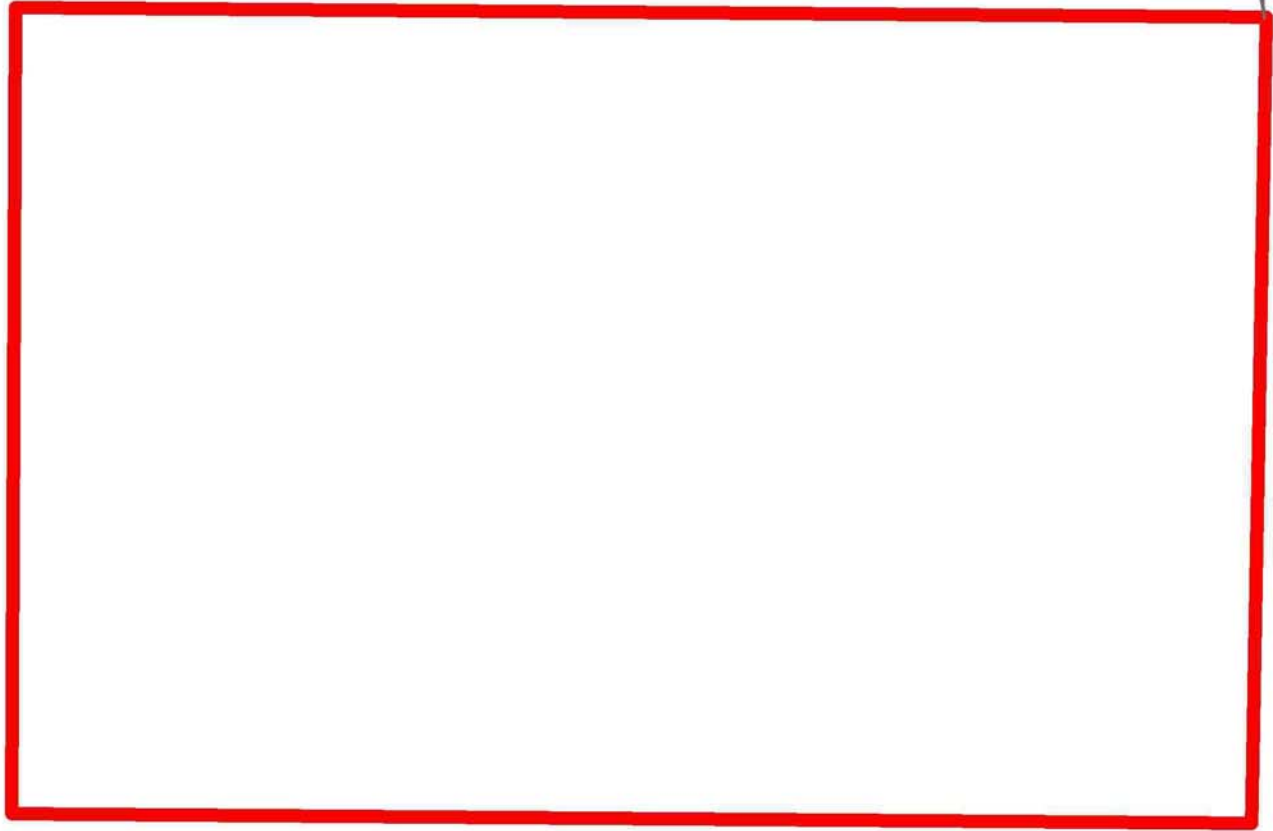
NOTE: The State of Louisiana does hereby reserve, and this lease shall be subject to, the imprescriptible right of surface use in the nature of a servitude in favor of the Department of Natural Resources, including its Offices and Commissions, for the sole purpose of implementing, constructing, servicing and maintaining approved coastal zone management and/or restoration projects. Utilization of any and all rights derived under this lease by the mineral lessee, its agents, successors or assigns, shall not interfere with nor hinder the reasonable surface use by the Department of Natural Resources, its Offices or Commissions, as herein above reserved.

Applicant: GHJ LAND SERVICES, L.L.C.

Bidder	Cash Payment	Price/Acre	Rental	Oil	Gas	Other



P.O.B.



CAMERON PARISH

GRAND LAKE

**TRACT 38567 - Cameron Parish, Louisiana**

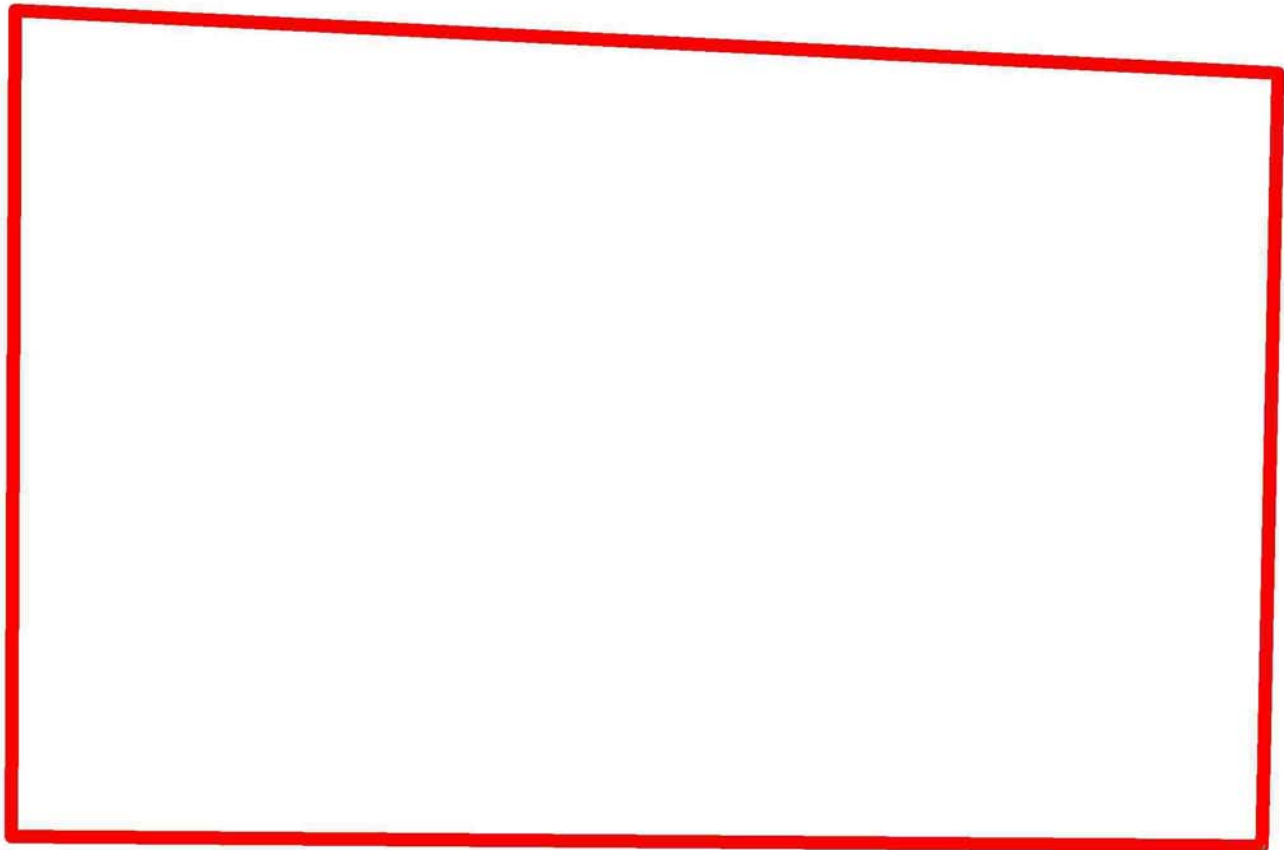
All of the lands now or formerly constituting the beds and bottoms of all water bodies of every nature and description the title of which vests in the State of Louisiana, together with all islands arising therein and other lands formed by accretion or by reliction, where allowed by law, excepting tax adjudicated lands, and not presently under mineral lease and cross hatched on September 13, 2006, situated in Cameron Parish, Louisiana, and more particularly described as follows: Beginning at a point having Coordinates of X = 1,550,469.60 and Y = 438,156.88; thence North 00 degrees 26 minutes 13 seconds East 13,020.43 feet to a point having Coordinates of X = 1,550,568.91 and Y = 451,176.92; thence South 89 degrees 45 minutes 33 seconds East 8,599.00 feet to a point having Coordinates of X = 1,559,167.83 and Y = 451,140.78; thence South 02 degrees 51 minutes 25 seconds West 13,162.69 feet to a point having Coordinates of X = 1,558,511.75 and Y = 437,994.44; thence North 88 degrees 50 minutes 35 seconds West 8,043.79 feet to the point of beginning, containing approximately **2,499.92 acres**, all as more particularly outlined on a plat on file in the Office of Mineral Resources, Department of Natural Resources. All bearings, distances and coordinates are based on Louisiana Coordinate System of 1927, (North or South Zone), where applicable.

NOTE: The above description of the Tract nominated for lease has been provided and corrected, where required, exclusively by the nomination party. Any mineral lease selected from this Tract and awarded by the Louisiana State Mineral Board shall be without warranty of any kind, either express, implied, or statutory, including, but not limited to, the implied warranties of merchantability and fitness for a particular purpose. Should the mineral lease awarded by the Louisiana State Mineral Board be subsequently modified, cancelled or abrogated due to the existence of conflicting leases, operating agreements, private claims or other future obligations or conditions which may affect all or any portion of the leased Tract, it shall not relieve the Lessee of the obligation to pay any bonus due thereon to the Louisiana State Mineral Board, nor shall the Louisiana State Mineral Board be obligated to refund any consideration paid by the Lessor prior to such modification, cancellation, or abrogation, including, but not limited to, bonuses, rentals and royalties.

NOTE: The State of Louisiana does hereby reserve, and this lease shall be subject to, the imprescriptible right of surface use in the nature of a servitude in favor of the Department of Natural Resources, including its Offices and Commissions, for the sole purpose of implementing, constructing, servicing and maintaining approved coastal zone management and/or restoration projects. Utilization of any and all rights derived under this lease by the mineral lessee, its agents, successors or assigns, shall not interfere with nor hinder the reasonable surface use by the Department of Natural Resources, its Offices or Commissions, as herein above reserved.

Applicant: GHJ LAND SERVICES, L.L.C.

Bidder	Cash Payment	Price/Acre	Rental	Oil	Gas	Other



CAMERON PARISH

GRAND LAKE

P.O.B.

**TRACT 38568 - Cameron Parish, Louisiana**

All of the lands now or formerly constituting the beds and bottoms of all water bodies of every nature and description the title of which vests in the State of Louisiana, together with all islands arising therein and other lands formed by accretion or by reliction, where allowed by law, excepting tax adjudicated lands, and not presently under mineral lease and cross hatched on September 13, 2006, situated in Cameron Parish, Louisiana, and more particularly described as follows: Beginning at a point having Coordinates of X = 1,431,610.00 and Y = 405,160.00; thence East 8,895.00 feet to a point having Coordinates of X = 1,440,505.00 and Y = 405,160.00; thence South 5,369.16 feet to a point on the North boundary of State Lease No. 12848, as amended, having Coordinates of X = 1,440,505.00 and Y = 399,790.84; thence along the North boundary of said State Lease No. 12848 the following courses: North 58 degrees 49 minutes 27 seconds West 268.82 feet, North 69 degrees 36 minutes 39 seconds West 602.76 feet, North 80 degrees 56 minutes 32 seconds West 349.36 feet, West 660.00 feet and South 79 degrees 14 minutes 57 seconds West 342.12 feet to the most Northeast corner of State Lease No. 13465, as amended, having Coordinates of X = 1,438,368.89 and Y = 400,131.18; thence along the Northwest boundary of said State Lease No. 13465 the following courses: South 79 degrees 14 minutes 57 seconds West 59.94 feet, South 62 degrees 14 minutes 29 seconds West 214.71 feet, South 49 degrees 50 minutes 38 seconds West 209.34 feet, South 32 degrees 07 minutes 30 seconds West 253.87 feet and South 11 degrees 18 minutes 36 seconds West 36.10 feet to its most Southwest corner located on the West boundary of said State Lease No. 12848, having Coordinates of X = 1,437,817.92 and Y = 399,634.60; thence South 11 degrees 18 minutes 36 seconds West 141.85 feet along the West boundary of said State Lease No. 12848 to a point on the Court Mandated Coastline having Coordinates of X = 1,437,790.10 and Y = 399,495.50; thence Northwesterly on a straight line to a point having Coordinates of X = 1,436,899 and Y = 399,820; thence Northwesterly on a straight line to a point having Coordinates of X = 1,431,610.00 and Y = 400,727.59; thence North 4,432.41 feet to the point of beginning, containing approximately **298 acres**, all as more particularly outlined on a plat on file in the Office of Mineral Resources, Department of Natural Resources. All bearings, distances and coordinates are based on Louisiana Coordinate System of 1927, (North or South Zone), where applicable.

NOTE: The above description of the Tract nominated for lease has been provided and corrected, where required, exclusively by the nomination party. Any mineral lease selected from this Tract and awarded by the Louisiana State Mineral Board shall be without warranty of any kind, either express, implied, or statutory, including, but not limited to, the implied warranties of merchantability and fitness for a particular purpose. Should the mineral lease awarded by the Louisiana State Mineral Board be subsequently modified, cancelled or abrogated due to the existence of conflicting leases, operating agreements, private claims or other future obligations or conditions which may affect all or any portion of the leased Tract, it shall not relieve the Lessee of the obligation to





pay any bonus due thereon to the Louisiana State Mineral Board, nor shall the Louisiana State Mineral Board be obligated to refund any consideration paid by the Lessor prior to such modification, cancellation, or abrogation, including, but not limited to, bonuses, rentals and royalties.

NOTE: The State of Louisiana does hereby reserve, and this lease shall be subject to, the imprescriptible right of surface use in the nature of a servitude in favor of the Department of Natural Resources, including its Offices and Commissions, for the sole purpose of implementing, constructing, servicing and maintaining approved coastal zone management and/or restoration projects. Utilization of any and all rights derived under this lease by the mineral lessee, its agents, successors or assigns, shall not interfere with nor hinder the reasonable surface use by the Department of Natural Resources, its Offices or Commissions, as herein above reserved.

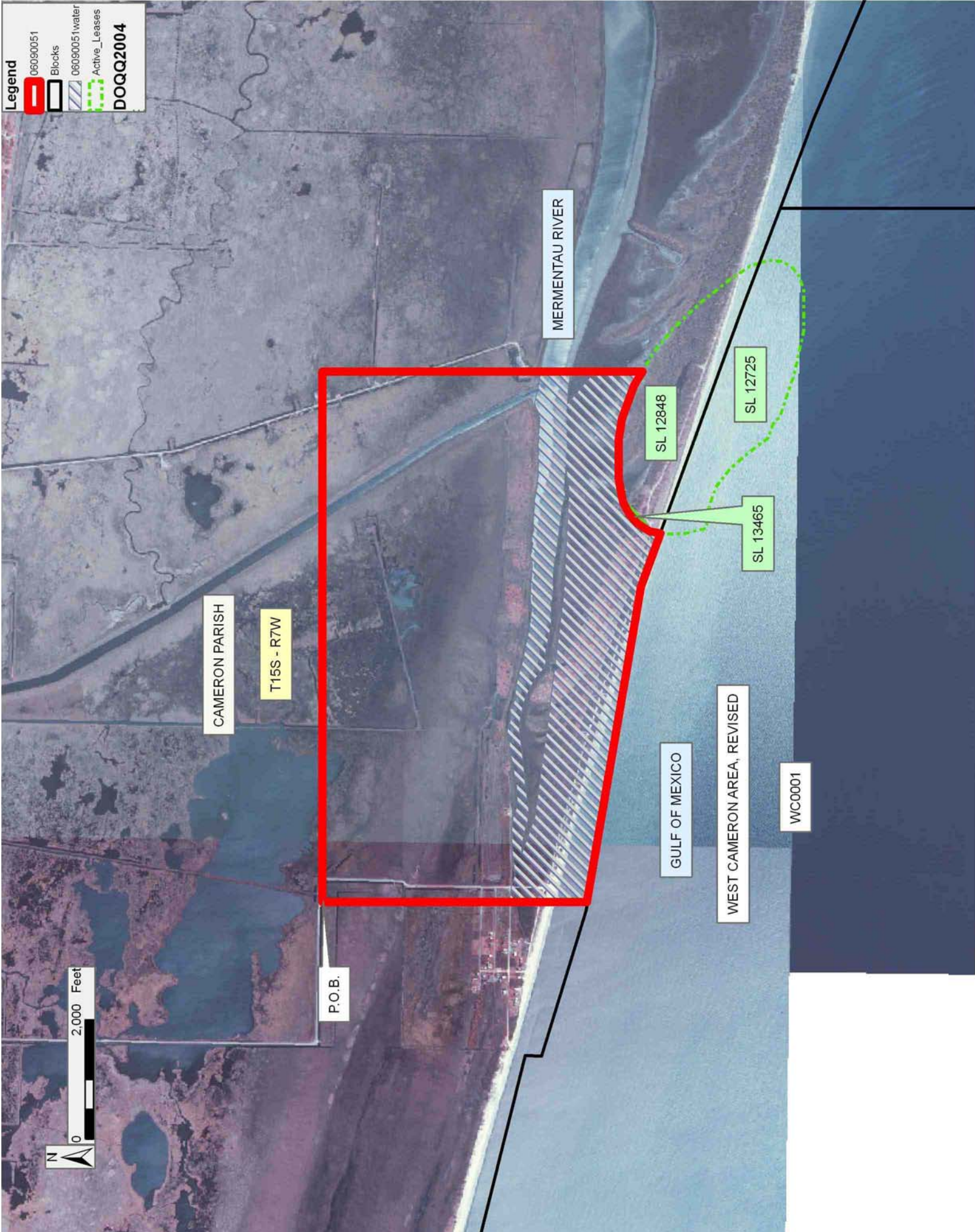
Applicant: LOUISIANA MINERALS MANAGEMENT

Bidder	Cash Payment	Price/Acre	Rental	Oil	Gas	Other

**Legend**

-  060900051
-  Blocks
-  060900051/water
-  Active\_Leases

**DOQQ2004**



**TRACT 38569 - St. Mary Parish, Louisiana**

All of the lands now or formerly constituting the beds and bottoms of all water bodies of every nature and description the title of which vests in the State of Louisiana, together with all islands arising therein and other lands formed by accretion or by reliction, where allowed by law, excepting tax adjudicated lands, and not presently under mineral lease and cross hatched on September 13, 2006, situated in St. Mary Parish, Louisiana, and more particularly described as follows: Beginning at a point having Coordinates of X = 2,060,341.97 and Y = 365,345.33; thence North 1,937.67 feet to the Southern most Southeast corner of State Lease No. 18620 having Coordinates of X = 2,060,341.97 and Y = 367,283.00; thence along the boundary of said State Lease No. 18620 the following courses: North 4,812.33 feet to a point having Coordinates of X = 2,060,341.91 and Y = 372,095.33 and East 4,127.03 feet to a point having Coordinates of X = 2,064,469.00 and Y = 372,095.33; thence East 4,872.97 feet to a point having Coordinates of X = 2,069,341.97 and Y = 372,095.33; thence South 6,750.00 feet to a point having Coordinates of X = 2,069,341.97 and Y = 365,345.33; thence West 9,000.00 feet to the point of beginning, containing approximately **84 acres**, all as more particularly outlined on a plat on file in the Office of Mineral Resources, Department of Natural Resources. All bearings, distances and coordinates are based on Louisiana Coordinate System of 1927, (North or South Zone), where applicable.

NOTE: The above description of the Tract nominated for lease has been provided and corrected, where required, exclusively by the nomination party. Any mineral lease selected from this Tract and awarded by the Louisiana State Mineral Board shall be without warranty of any kind, either express, implied, or statutory, including, but not limited to, the implied warranties of merchantability and fitness for a particular purpose. Should the mineral lease awarded by the Louisiana State Mineral Board be subsequently modified, cancelled or abrogated due to the existence of conflicting leases, operating agreements, private claims or other future obligations or conditions which may affect all or any portion of the leased Tract, it shall not relieve the Lessee of the obligation to pay any bonus due thereon to the Louisiana State Mineral Board, nor shall the Louisiana State Mineral Board be obligated to refund any consideration paid by the Lessor prior to such modification, cancellation, or abrogation, including, but not limited to, bonuses, rentals and royalties.

NOTE: The State of Louisiana does hereby reserve, and this lease shall be subject to, the imprescriptible right of surface use in the nature of a servitude in favor of the Department of Natural Resources, including its Offices and Commissions, for the sole purpose of implementing, constructing, servicing and maintaining approved coastal zone management and/or restoration projects. Utilization of any and all rights derived under this lease by the mineral lessee, its agents, successors or assigns, shall not interfere with nor hinder the reasonable surface use by the



Department of Natural Resources, its Offices or Commissions, as herein above reserved.

Applicant: KENNETH S. HILL PROPERTIES

Bidder	Cash Payment	Price/Acre	Rental	Oil	Gas	Other

**Legend**

- 06090015 
- 06090015water 
- Active\_Leases 

**DOQQ2004**



**TRACT 38570 - Jefferson and Lafourche Parishes, Louisiana**

All of the lands now or formerly constituting the beds and bottoms of all water bodies of every nature and description the title of which vests in the State of Louisiana, together with all islands arising therein and other lands formed by accretion or by reliction, where allowed by law, excepting tax adjudicated lands, and not presently under mineral lease and cross hatched on September 13, 2006, situated in Jefferson and Lafourche Parishes, Louisiana, and more particularly described as follows: Beginning at the Northeast corner of State Lease No. 18143 having Coordinates of X = 2,398,549.58 and Y = 305,150.15; thence East 11,802.38 feet to a point having Coordinates of X = 2,410,351.96 and Y = 305,150.15; thence South 4,642.08 feet to a point having Coordinates of X = 2,410,351.96 and Y = 300,508.07; thence West 6,489.42 feet to a point having Coordinates of X = 2,403,862.54 and Y = 300,508.07; thence South 9,694.24 feet to a point having Coordinates of X = 2,403,862.54 and Y = 290,813.83; thence East 2,708.61 feet to a point having Coordinates of X = 2,406,571.15 and Y = 290,813.83; thence South 2,298.83 feet to a point having Coordinates of X = 2,406,571.15 and Y = 288,515.00; thence West 10,284.15 feet to a point having Coordinates of X = 2,396,287.00 and Y = 288,515.00; thence North 10,102.78 feet to a point on the South boundary of said State Lease No. 18143 having Coordinates of X = 2,396,287.00 and Y = 298,617.78; thence along the boundary of said State Lease No. 18143 the following courses: East 880.60 feet to a point having Coordinates of X = 2,397,167.60 and Y = 298,617.78, North 38 degrees 53 minutes 26 seconds East 2,201.19 feet to a point having Coordinates of X = 2,398,549.58 and Y = 300,331.07 and North 4,819.08 feet to the point of beginning, containing approximately **2,480 acres**, all as more particularly outlined on a plat on file in the Office of Mineral Resources, Department of Natural Resources. All bearings, distances and coordinates are based on Louisiana Coordinate System of 1927, (North or South Zone), where applicable.

NOTE: The above description of the Tract nominated for lease has been provided and corrected, where required, exclusively by the nomination party. Any mineral lease selected from this Tract and awarded by the Louisiana State Mineral Board shall be without warranty of any kind, either express, implied, or statutory, including, but not limited to, the implied warranties of merchantability and fitness for a particular purpose. Should the mineral lease awarded by the Louisiana State Mineral Board be subsequently modified, cancelled or abrogated due to the existence of conflicting leases, operating agreements, private claims or other future obligations or conditions which may affect all or any portion of the leased Tract, it shall not relieve the Lessee of the obligation to pay any bonus due thereon to the Louisiana State Mineral Board, nor shall the Louisiana State Mineral Board be obligated to refund any consideration paid by the Lessor prior to such modification, cancellation, or abrogation, including, but not limited to, bonuses, rentals and royalties.

NOTE: The State of Louisiana does hereby reserve, and this lease shall be subject to, the imprescriptible right of surface use in the nature of a

servitude in favor of the Department of Natural Resources, including its Offices and Commissions, for the sole purpose of implementing, constructing, servicing and maintaining approved coastal zone management and/or restoration projects. Utilization of any and all rights derived under this lease by the mineral lessee, its agents, successors or assigns, shall not interfere with nor hinder the reasonable surface use by the Department of Natural Resources, its Offices or Commissions, as herein above reserved.

NOTE: The Department of Wildlife and Fisheries has designated certain areas in the coastal waters of the State of Louisiana as Oyster Seed Bed Areas. The exact location of those Seed Bed Areas must be obtained from the Department of Wildlife and Fisheries and any work done under a mineral lease from the State of Louisiana may necessarily be conducted in conformity with the rules and regulations promulgated by the said Department of Wildlife and Fisheries for Oyster Seed Bed Areas.

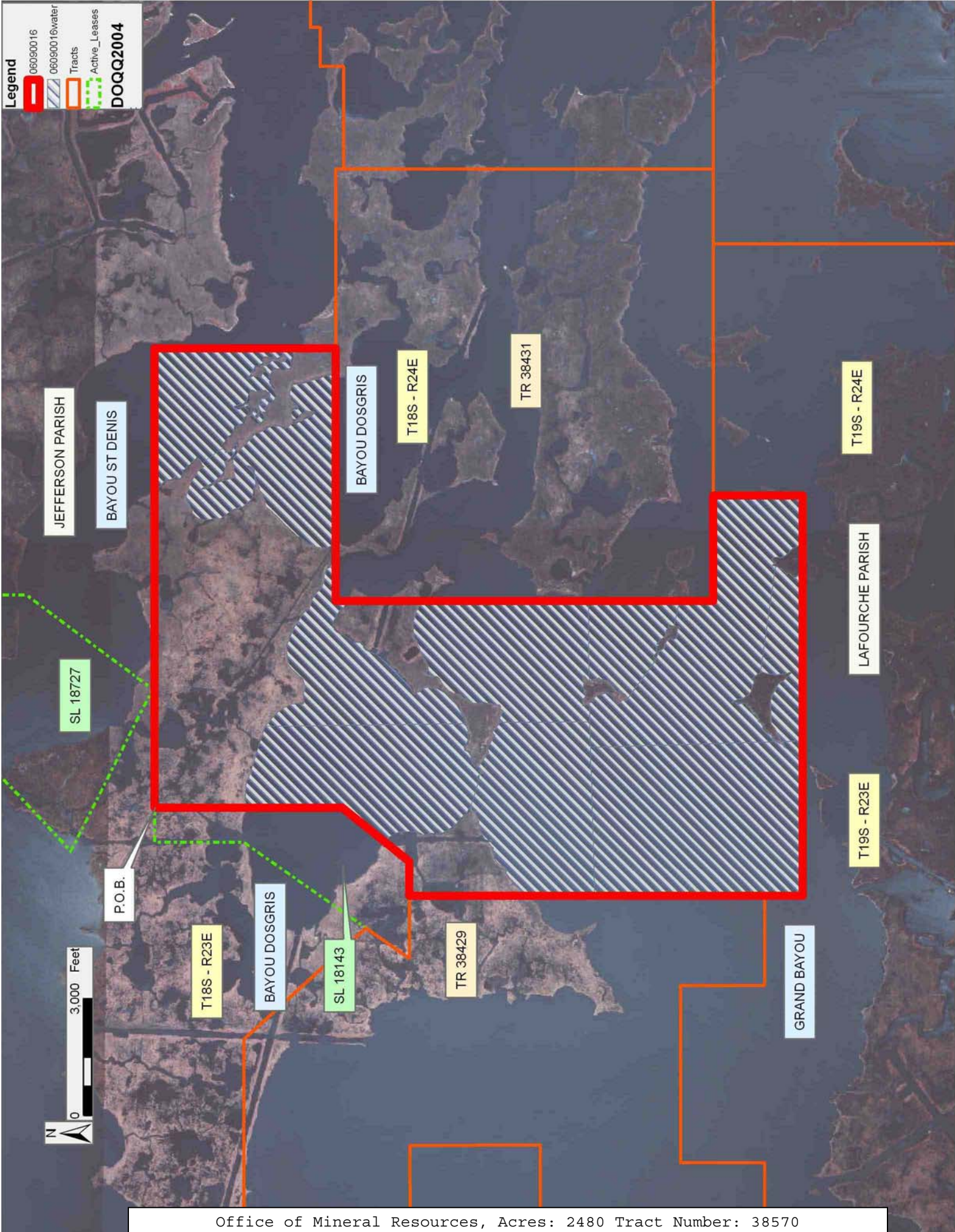
Applicant: LESLIE M. COOPER

Bidder	Cash Payment	Price/Acre	Rental	Oil	Gas	Other

**Legend**

- 06090016
- 06090016water
- Tracts
- Active\_Leases

**DOQQ2004**



**TRACT 38571 - Portion of Blocks 50, and 51, Breton Sound Area, Plaquemines Parish, Louisiana**

All of the lands now or formerly constituting the beds and bottoms of all water bodies of every nature and description the title of which vests in the State of Louisiana, together with all islands arising therein and other lands formed by accretion or by reliction, where allowed by law, excepting tax adjudicated lands, and not presently under mineral lease and cross hatched on September 13, 2006, situated in Plaquemines Parish, Louisiana, and more particularly described as follows: Beginning at a point located on the North line of Block 50, Breton Sound Area, having Coordinates of X = 2,659,124.27 and Y = 292,830.00; thence East 5,725.73 feet along the North line of said Block 50 to its Northeast corner having Coordinates of X = 2,664,850.00 and Y = 292,830.00; thence South 7,375.00 feet along the East line of said Block 50 to a point having Coordinates of X = 2,664,850.00 and Y = 285,455.00; thence East 2,745.17 feet to a point having Coordinates of X = 2,667,595.17 and Y = 285,455.00; thence South 5,864.26 feet to a point having Coordinates of X = 2,667,595.17 and Y = 279,590.74; thence West 7,233.83 feet to a point on the East boundary of State Lease No. 18578 having Coordinates of X = 2,660,361.34 and Y = 279,590.74; thence along the boundary of said State Lease No. 18578 the following courses: North 06 degrees 26 minutes 10 seconds West 2,563.42 feet to its Northeast corner having Coordinates of X = 2,660,074.00 and Y = 282,138.00 and North 44 degrees 13 minutes 54 seconds West 1,361.51 feet to a point having Coordinates of X = 2,659,124.27 and Y = 283,113.55; thence North 9,716.45 feet to the point of beginning, containing approximately **2,035.23 acres**, all as more particularly outlined on a plat on file in the Office of Mineral Resources, Department of Natural Resources. All bearings, distances and coordinates are based on Louisiana Coordinate System of 1927, (North or South Zone), where applicable.

NOTE: The above description of the Tract nominated for lease has been provided and corrected, where required, exclusively by the nomination party. Any mineral lease selected from this Tract and awarded by the Louisiana State Mineral Board shall be without warranty of any kind, either express, implied, or statutory, including, but not limited to, the implied warranties of merchantability and fitness for a particular purpose. Should the mineral lease awarded by the Louisiana State Mineral Board be subsequently modified, cancelled or abrogated due to the existence of conflicting leases, operating agreements, private claims or other future obligations or conditions which may affect all or any portion of the leased Tract, it shall not relieve the Lessee of the obligation to pay any bonus due thereon to the Louisiana State Mineral Board, nor shall the Louisiana State Mineral Board be obligated to refund any consideration paid by the Lessor prior to such modification, cancellation, or abrogation, including, but not limited to, bonuses, rentals and royalties.

NOTE: The State of Louisiana does hereby reserve, and this lease shall be subject to, the imprescriptible right of surface use in the nature of a servitude in favor of the Department of Natural Resources, including its

Offices and Commissions, for the sole purpose of implementing, constructing, servicing and maintaining approved coastal zone management and/or restoration projects. Utilization of any and all rights derived under this lease by the mineral lessee, its agents, successors or assigns, shall not interfere with nor hinder the reasonable surface use by the Department of Natural Resources, its Offices or Commissions, as herein above reserved.

Applicant: THEOPHILUS OIL, GAS & LAND SERVICES, LLC

Bidder	Cash Payment	Price/Acre	Rental	Oil	Gas	Other

**Legend**

- 06090054
- Blocks
- Tracts
- Active\_Leases

BS0046

TR 38524

BS0051

SL 17245

TR 38523

SL 18578

P.O.B.

BS0047

0 2,000 Feet



PLAQUEMINES PARISH

BRETON SOUND AREA

BS0050

GULF OF MEXICO



**TRACT 38572 - Terrebonne Parish, Louisiana**

All of the lands now or formerly constituting the beds and bottoms of all water bodies of every nature and description the title of which vests in the State of Louisiana, together with all islands arising therein and other lands formed by accretion or by reliction, where allowed by law, excepting tax adjudicated lands, and not presently under mineral lease and cross hatched on September 13, 2006, situated in Terrebonne Parish, Louisiana, and more particularly described as follows: Beginning at a point on the South boundary of State Lease No. 17755 having Coordinates of X = 2,218,173.98 and Y = 267,934.96; thence North 84 degrees 00 minutes 13 seconds East 1,484.14 feet along the South boundary of said State Lease No. 17755 to its Southeast corner, also being the Southwest corner of State Lease No. 17535 having Coordinates of X = 2,219,650.00 and Y = 268,090.00; thence along the boundary of said State Lease No. 17535 the following courses: East 3,090.00 feet to its Southeast corner having Coordinates of X = 2,222,740.00 and Y = 268,090.00 and North 2,127.00 feet to its Northeast corner located on the South boundary of State Lease No. 17756 having Coordinates of X = 2,222,740.00 and Y = 270,217.00; thence East 1,284.87 feet along the South boundary of said State Lease No. 17756 to its Southeast corner having Coordinates of X = 2,224,024.87 and Y = 270,217.00; thence South 9,829.80 feet to a point having Coordinates of X = 2,224,024.87 and Y = 260,387.20; thence West 5,850.89 feet to a point having Coordinates of X = 2,218,173.98 and Y = 260,387.20; thence North 7,547.76 feet to the point of beginning, containing approximately **800 acres**, all as more particularly outlined on a plat on file in the Office of Mineral Resources, Department of Natural Resources. All bearings, distances and coordinates are based on Louisiana Coordinate System of 1927, (North or South Zone), where applicable.

NOTE: The above description of the Tract nominated for lease has been provided and corrected, where required, exclusively by the nomination party. Any mineral lease selected from this Tract and awarded by the Louisiana State Mineral Board shall be without warranty of any kind, either express, implied, or statutory, including, but not limited to, the implied warranties of merchantability and fitness for a particular purpose. Should the mineral lease awarded by the Louisiana State Mineral Board be subsequently modified, cancelled or abrogated due to the existence of conflicting leases, operating agreements, private claims or other future obligations or conditions which may affect all or any portion of the leased Tract, it shall not relieve the Lessee of the obligation to pay any bonus due thereon to the Louisiana State Mineral Board, nor shall the Louisiana State Mineral Board be obligated to refund any consideration paid by the Lessor prior to such modification, cancellation, or abrogation, including, but not limited to, bonuses, rentals and royalties.

NOTE: The State of Louisiana does hereby reserve, and this lease shall be subject to, the imprescriptible right of surface use in the nature of a servitude in favor of the Department of Natural Resources, including its Offices and Commissions, for the sole purpose of implementing,

constructing, servicing and maintaining approved coastal zone management and/or restoration projects. Utilization of any and all rights derived under this lease by the mineral lessee, its agents, successors or assigns, shall not interfere with nor hinder the reasonable surface use by the Department of Natural Resources, its Offices or Commissions, as herein above reserved.

NOTE: The Department of Wildlife and Fisheries has designated certain areas in the coastal waters of the State of Louisiana as Oyster Seed Bed Areas. The exact location of those Seed Bed Areas must be obtained from the Department of Wildlife and Fisheries and any work done under a mineral lease from the State of Louisiana may necessarily be conducted in conformity with the rules and regulations promulgated by the said Department of Wildlife and Fisheries for Oyster Seed Bed Areas.

Applicant: THEOPHILUS OIL, GAS & LAND SERVICES, LLC

Bidder	Cash Payment	Price/Acre	Rental	Oil	Gas	Other

**Legend**

- 06090049
- 06090049water
- Active\_Leases

**DOQQ2004**



TERREBONNE PARISH

T19S - R18E

LAKE BOUDREAUX

SL 17756

SL 17535

SL 17755

P.O.B.



**TRACT 38573 - Terrebonne Parish, Louisiana**

All of the lands now or formerly constituting the beds and bottoms of all water bodies of every nature and description the title of which vests in the State of Louisiana, together with all islands arising therein and other lands formed by accretion or by reliction, where allowed by law, excepting tax adjudicated lands, and not presently under mineral lease and cross hatched on September 13, 2006, situated in Terrebonne Parish, Louisiana, and more particularly described as follows: Beginning at the Southwest corner of State Lease No. 17967 located on the East boundary of State Lease No. 18843 having Coordinates of X = 2,213,807.98 and Y = 268,434.08; thence North 79 degrees 52 minutes 33 seconds East 2,403.42 feet along the South boundary of said State Lease No. 17967 to a point having Coordinates of X = 2,216,173.98 and Y = 268,856.56; thence South 8,469.36 feet to a point having Coordinates of X = 2,216,173.98 and Y = 260,387.20; thence West 1,500.00 feet to the Southeast corner of State Lease No. 18845 having Coordinates of X = 2,214,673.98 and Y = 260,387.20; thence along the boundary of said State Lease No. 18845 the following courses: North 01 degrees 25 minutes 08 seconds West 2,062.08 feet to its Northeast corner having Coordinates of X = 2,214,622.92 and Y = 262,448.65 and North 52 degrees 31 minutes 45 seconds West 1,026.81 feet to its Northwest corner, also being the Southeast corner of State Lease No. 18856 and a point on the boundary of State Lease No. 18844 having Coordinates of X = 2,213,807.98 and Y = 263,073.32; thence North 4,593.68 feet along the East boundary of said State Lease No. 18856 to its Northeast corner, also being the Southeast corner of said State Lease No. 18843 having Coordinates of X = 2,213,807.98 and Y = 267,667.00; thence North 767.08 feet along the East boundary of said State Lease No. 18843 to the point of beginning, containing approximately **402.93 acres**, all as more particularly outlined on a plat on file in the Office of Mineral Resources, Department of Natural Resources. All bearings, distances and coordinates are based on Louisiana Coordinate System of 1927, (North or South Zone), where applicable.

NOTE: The above description of the Tract nominated for lease has been provided and corrected, where required, exclusively by the nomination party. Any mineral lease selected from this Tract and awarded by the Louisiana State Mineral Board shall be without warranty of any kind, either express, implied, or statutory, including, but not limited to, the implied warranties of merchantability and fitness for a particular purpose. Should the mineral lease awarded by the Louisiana State Mineral Board be subsequently modified, cancelled or abrogated due to the existence of conflicting leases, operating agreements, private claims or other future obligations or conditions which may affect all or any portion of the leased Tract, it shall not relieve the Lessee of the obligation to pay any bonus due thereon to the Louisiana State Mineral Board, nor shall the Louisiana State Mineral Board be obligated to refund any consideration paid by the Lessor prior to such modification, cancellation, or abrogation, including, but not limited to, bonuses, rentals and royalties.

NOTE: The State of Louisiana does hereby reserve, and this lease shall be subject to, the imprescriptible right of surface use in the nature of a servitude in favor of the Department of Natural Resources, including its Offices and Commissions, for the sole purpose of implementing, constructing, servicing and maintaining approved coastal zone management and/or restoration projects. Utilization of any and all rights derived under this lease by the mineral lessee, its agents, successors or assigns, shall not interfere with nor hinder the reasonable surface use by the Department of Natural Resources, its Offices or Commissions, as herein above reserved.

NOTE: The Department of Wildlife and Fisheries has designated certain areas in the coastal waters of the State of Louisiana as Oyster Seed Bed Areas. The exact location of those Seed Bed Areas must be obtained from the Department of Wildlife and Fisheries and any work done under a mineral lease from the State of Louisiana may necessarily be conducted in conformity with the rules and regulations promulgated by the said Department of Wildlife and Fisheries for Oyster Seed Bed Areas.

Applicant: THEOPHILUS OIL, GAS & LAND SERVICES, LLC

Bidder	Cash Payment	Price/Acre	Rental	Oil	Gas	Other

