

**TRACT 38554 - Cameron Parish, Louisiana**

All of the lands now or formerly constituting the beds and bottoms of all water bodies of every nature and description the title of which vests in the State of Louisiana, together with all islands arising therein and other lands formed by accretion or by reliction, where allowed by law, excepting tax adjudicated lands, and not presently under mineral lease and cross hatched on September 13, 2006, situated in Cameron Parish, Louisiana, and more particularly described as follows: Beginning at a point having Coordinates of X = 1,521,110.48 and Y = 463,888.53; thence North 02 degrees 02 minutes 27 seconds East 1,154.68 feet to a point having Coordinates of X = 1,521,151.60 and Y = 465,042.48; thence North 08 degrees 56 minutes 09 seconds East 5,523.41 feet to a point having Coordinates of X = 1,522,009.55 and Y = 470,498.85; thence North 00 degrees 54 minutes 36 seconds East 9,822.72 feet to a point having Coordinates of X = 1,522,165.54 and Y = 480,320.33; thence South 89 degrees 11 minutes 50 seconds East 5,435.32 feet to a point having Coordinates of X = 1,527,600.33 and Y = 480,244.19; thence South 00 degrees 39 minutes 17 seconds West 16,359.21 feet to a point having Coordinates of X = 1,527,413.36 and Y = 463,886.05; thence North 89 degrees 58 minutes 39 seconds West 6,302.88 feet to the point of beginning, containing approximately **927 acres**, all as more particularly outlined on a plat on file in the Office of Mineral Resources, Department of Natural Resources. All bearings, distances and coordinates are based on Louisiana Coordinate System of 1927, (North or South Zone), where applicable.

NOTE: The above description of the Tract nominated for lease has been provided and corrected, where required, exclusively by the nomination party. Any mineral lease selected from this Tract and awarded by the Louisiana State Mineral Board shall be without warranty of any kind, either express, implied, or statutory, including, but not limited to, the implied warranties of merchantability and fitness for a particular purpose. Should the mineral lease awarded by the Louisiana State Mineral Board be subsequently modified, cancelled or abrogated due to the existence of conflicting leases, operating agreements, private claims or other future obligations or conditions which may affect all or any portion of the leased Tract, it shall not relieve the Lessee of the obligation to pay any bonus due thereon to the Louisiana State Mineral Board, nor shall the Louisiana State Mineral Board be obligated to refund any consideration paid by the Lessor prior to such modification, cancellation, or abrogation, including, but not limited to, bonuses, rentals and royalties.

NOTE: The State of Louisiana does hereby reserve, and this lease shall be subject to, the imprescriptible right of surface use in the nature of a servitude in favor of the Department of Natural Resources, including its Offices and Commissions, for the sole purpose of implementing, constructing, servicing and maintaining approved coastal zone management and/or restoration projects. Utilization of any and all rights derived under this lease by the mineral lessee, its agents, successors or assigns,

shall not interfere with nor hinder the reasonable surface use by the Department of Natural Resources, its Offices or Commissions, as herein above reserved.

Applicant: GHJ LAND SERVICES, L.L.C.

Bidder	Cash Payment	Price/ Acre	Rental	Oil	Gas	Other

Legend

06090018

06090018water

DOQQ2004

MERMENTAU RIVER

GRAND LAKE

CAMERON PARISH

T13S - R4W



MUD LAKE

P.O.B.

BAYOU LACASSINE



**TRACT 38555 - Cameron Parish, Louisiana**

All of the lands now or formerly constituting the beds and bottoms of all water bodies of every nature and description the title of which vests in the State of Louisiana, together with all islands arising therein and other lands formed by accretion or by reliction, where allowed by law, excepting tax adjudicated lands, and not presently under mineral lease and cross hatched on September 13, 2006, situated in Cameron Parish, Louisiana, and more particularly described as follows: Beginning at a point having Coordinates of X = 1,534,492.10 and Y = 463,883.25; thence North 89 degrees 58 minutes 38 seconds West 7,078.74 feet to a point having Coordinates of X = 1,527,413.36 and Y = 463,886.05; thence North 00 degrees 39 minutes 17 seconds East 16,359.21 feet to a point having Coordinates of X = 1,527,600.33 and Y = 480,244.19; thence South 89 degrees 11 minutes 51 seconds East 6,894.32 feet to a point having Coordinates of X = 1,534,493.97 and Y = 480,147.62; thence South 00 degrees 00 minutes 24 seconds West 16,264.37 feet to the point of beginning, containing approximately **1,786 acres**, all as more particularly outlined on a plat on file in the Office of Mineral Resources, Department of Natural Resources. All bearings, distances and coordinates are based on Louisiana Coordinate System of 1927, (North or South Zone), where applicable.

NOTE: The above description of the Tract nominated for lease has been provided and corrected, where required, exclusively by the nomination party. Any mineral lease selected from this Tract and awarded by the Louisiana State Mineral Board shall be without warranty of any kind, either express, implied, or statutory, including, but not limited to, the implied warranties of merchantability and fitness for a particular purpose. Should the mineral lease awarded by the Louisiana State Mineral Board be subsequently modified, cancelled or abrogated due to the existence of conflicting leases, operating agreements, private claims or other future obligations or conditions which may affect all or any portion of the leased Tract, it shall not relieve the Lessee of the obligation to pay any bonus due thereon to the Louisiana State Mineral Board, nor shall the Louisiana State Mineral Board be obligated to refund any consideration paid by the Lessor prior to such modification, cancellation, or abrogation, including, but not limited to, bonuses, rentals and royalties.

NOTE: The State of Louisiana does hereby reserve, and this lease shall be subject to, the imprescriptible right of surface use in the nature of a servitude in favor of the Department of Natural Resources, including its Offices and Commissions, for the sole purpose of implementing, constructing, servicing and maintaining approved coastal zone management and/or restoration projects. Utilization of any and all rights derived under this lease by the mineral lessee, its agents, successors or assigns, shall not interfere with nor hinder the reasonable surface use by the Department of Natural Resources, its Offices or Commissions, as herein above reserved.

Applicant: GHJ LAND SERVICES, L.L.C.

Bidder	Cash Payment	Price/ Acre	Rental	Oil	Gas	Other

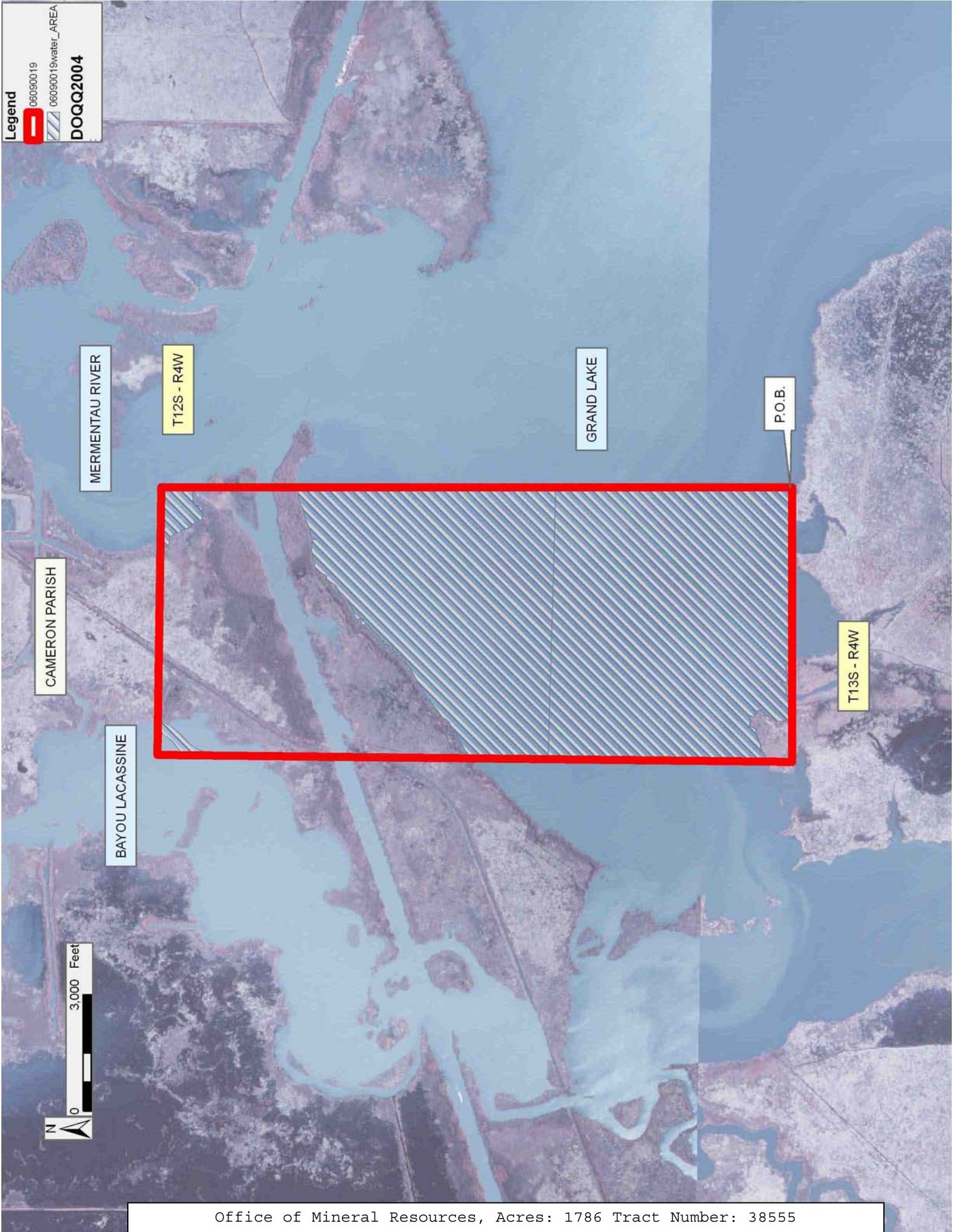


Legend

06090019

06090019water\_AREA

DOQQ2004



**TRACT 38556 - Cameron Parish, Louisiana**

All of the lands now or formerly constituting the beds and bottoms of all water bodies of every nature and description the title of which vests in the State of Louisiana, together with all islands arising therein and other lands formed by accretion or by reliction, where allowed by law, excepting tax adjudicated lands, and not presently under mineral lease and cross hatched on September 13, 2006, situated in Cameron Parish, Louisiana, and more particularly described as follows: Beginning at a point having Coordinates of X = 1,534,492.10 and Y = 463,883.25; thence North 00 degrees 00 minutes 24 seconds East 16,264.36 feet to a point having Coordinates of X = 1,534,493.97 and Y = 480,147.62; thence South 89 degrees 11 minutes 51 seconds East 7,090.44 feet to a point having Coordinates of X = 1,541,583.71 and Y = 480,048.29; thence South 00 degrees 00 minutes 04 seconds West 16,167.84 feet to a point having Coordinates of X = 1,541,583.39 and Y = 463,880.46; thence North 89 degrees 58 minutes 39 seconds West 7,091.29 feet to the point of beginning, containing approximately **2,396 acres**, all as more particularly outlined on a plat on file in the Office of Mineral Resources, Department of Natural Resources. All bearings, distances and coordinates are based on Louisiana Coordinate System of 1927, (North or South Zone), where applicable.

NOTE: The above description of the Tract nominated for lease has been provided and corrected, where required, exclusively by the nomination party. Any mineral lease selected from this Tract and awarded by the Louisiana State Mineral Board shall be without warranty of any kind, either express, implied, or statutory, including, but not limited to, the implied warranties of merchantability and fitness for a particular purpose. Should the mineral lease awarded by the Louisiana State Mineral Board be subsequently modified, cancelled or abrogated due to the existence of conflicting leases, operating agreements, private claims or other future obligations or conditions which may affect all or any portion of the leased Tract, it shall not relieve the Lessee of the obligation to pay any bonus due thereon to the Louisiana State Mineral Board, nor shall the Louisiana State Mineral Board be obligated to refund any consideration paid by the Lessor prior to such modification, cancellation, or abrogation, including, but not limited to, bonuses, rentals and royalties.

NOTE: The State of Louisiana does hereby reserve, and this lease shall be subject to, the imprescriptible right of surface use in the nature of a servitude in favor of the Department of Natural Resources, including its Offices and Commissions, for the sole purpose of implementing, constructing, servicing and maintaining approved coastal zone management and/or restoration projects. Utilization of any and all rights derived under this lease by the mineral lessee, its agents, successors or assigns, shall not interfere with nor hinder the reasonable surface use by the Department of Natural Resources, its Offices or Commissions, as herein above reserved.

Applicant: GHJ LAND SERVICES, L.L.C.

Bidder	Cash Payment	Price/ Acre	Rental	Oil	Gas	Other

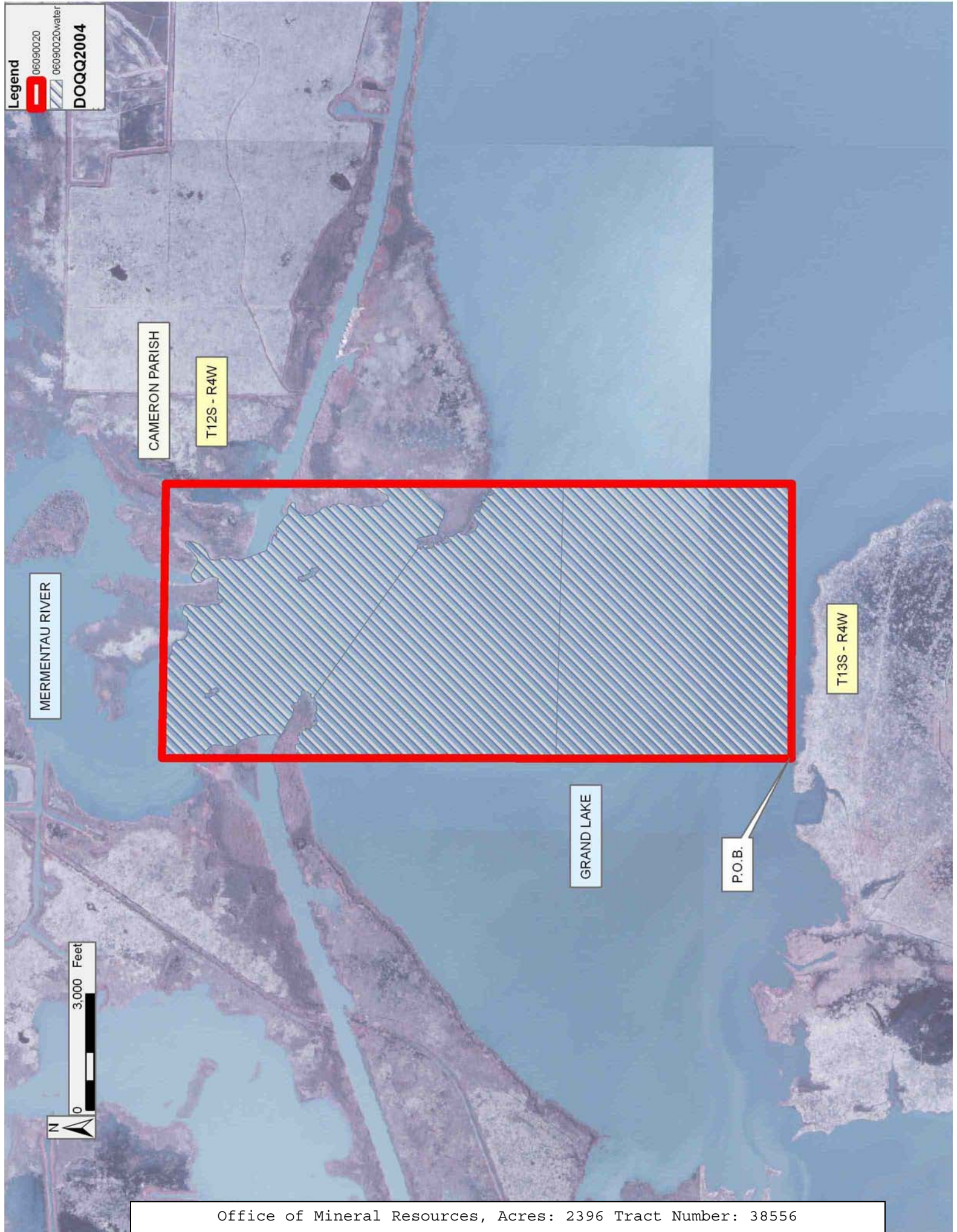


Legend

06090020

06090020water

DOQQ2004



**TRACT 38557 - Cameron Parish, Louisiana**

All of the lands now or formerly constituting the beds and bottoms of all water bodies of every nature and description the title of which vests in the State of Louisiana, together with all islands arising therein and other lands formed by accretion or by reliction, where allowed by law, excepting tax adjudicated lands, and not presently under mineral lease and cross hatched on September 13, 2006, situated in Cameron Parish, Louisiana, and more particularly described as follows: Beginning at a point having Coordinates of X = 1,549,933.00 and Y = 463,877.16; thence North 89 degrees 58 minutes 39 seconds West 8,349.61 feet to a point having Coordinates of X = 1,541,583.39 and Y = 463,880.46; thence North 00 degrees 00 minutes 04 seconds East 16,167.84 feet to a point having Coordinates of X = 1,541,583.71 and Y = 480,048.29; thence South 89 degrees 11 minutes 51 seconds East 8,350.11 feet to a point having Coordinates of X = 1,549,933.00 and Y = 479,931.33; thence South 16,054.16 feet to the point of beginning, containing approximately **1,673 acres**, all as more particularly outlined on a plat on file in the Office of Mineral Resources, Department of Natural Resources. All bearings, distances and coordinates are based on Louisiana Coordinate System of 1927, (North or South Zone), where applicable.

NOTE: The above description of the Tract nominated for lease has been provided and corrected, where required, exclusively by the nomination party. Any mineral lease selected from this Tract and awarded by the Louisiana State Mineral Board shall be without warranty of any kind, either express, implied, or statutory, including, but not limited to, the implied warranties of merchantability and fitness for a particular purpose. Should the mineral lease awarded by the Louisiana State Mineral Board be subsequently modified, cancelled or abrogated due to the existence of conflicting leases, operating agreements, private claims or other future obligations or conditions which may affect all or any portion of the leased Tract, it shall not relieve the Lessee of the obligation to pay any bonus due thereon to the Louisiana State Mineral Board, nor shall the Louisiana State Mineral Board be obligated to refund any consideration paid by the Lessor prior to such modification, cancellation, or abrogation, including, but not limited to, bonuses, rentals and royalties.

NOTE: The State of Louisiana does hereby reserve, and this lease shall be subject to, the imprescriptible right of surface use in the nature of a servitude in favor of the Department of Natural Resources, including its Offices and Commissions, for the sole purpose of implementing, constructing, servicing and maintaining approved coastal zone management and/or restoration projects. Utilization of any and all rights derived under this lease by the mineral lessee, its agents, successors or assigns, shall not interfere with nor hinder the reasonable surface use by the Department of Natural Resources, its Offices or Commissions, as herein above reserved.

Applicant: GHJ LAND SERVICES, L.L.C.

Bidder	Cash Payment	Price/ Acre	Rental	Oil	Gas	Other



Legend

060900021

060900021water

DOQQ2004





**TRACT 38558 - Cameron Parish, Louisiana**

All of the lands now or formerly constituting the beds and bottoms of all water bodies of every nature and description the title of which vests in the State of Louisiana, together with all islands arising therein and other lands formed by accretion or by reliction, where allowed by law, excepting tax adjudicated lands, and not presently under mineral lease and cross hatched on September 13, 2006, situated in Cameron Parish, Louisiana, and more particularly described as follows: Beginning at a point having Coordinates of X = 1,549,933.00 and Y = 463,877.16; thence North 16,054.16 feet to a point having Coordinates of X = 1,549,933.00 and Y = 479,931.33; thence South 89 degrees 11 minutes 51 seconds East 10,083.34 feet to a point having Coordinates of X = 1,560,015.35 and Y = 479,790.08; thence South 00 degrees 18 minutes 31 seconds East 8,911.68 feet to a point having Coordinates of X = 1,560,063.33 and Y = 470,878.53; thence South 00 degrees 17 minutes 37 seconds East 1,626.87 feet to a point having Coordinates of X = 1,560,071.67 and Y = 469,251.68; thence South 02 degrees 29 minutes 28 seconds West 5,383.52 feet to a point having Coordinates of X = 1,559,837.68 and Y = 463,873.25; thence North 89 degrees 58 minutes 39 seconds West 9,904.68 feet to the point of beginning, containing approximately **1,859 acres**, all as more particularly outlined on a plat on file in the Office of Mineral Resources, Department of Natural Resources. All bearings, distances and coordinates are based on Louisiana Coordinate System of 1927, (North or South Zone), where applicable.

NOTE: The above description of the Tract nominated for lease has been provided and corrected, where required, exclusively by the nomination party. Any mineral lease selected from this Tract and awarded by the Louisiana State Mineral Board shall be without warranty of any kind, either express, implied, or statutory, including, but not limited to, the implied warranties of merchantability and fitness for a particular purpose. Should the mineral lease awarded by the Louisiana State Mineral Board be subsequently modified, cancelled or abrogated due to the existence of conflicting leases, operating agreements, private claims or other future obligations or conditions which may affect all or any portion of the leased Tract, it shall not relieve the Lessee of the obligation to pay any bonus due thereon to the Louisiana State Mineral Board, nor shall the Louisiana State Mineral Board be obligated to refund any consideration paid by the Lessor prior to such modification, cancellation, or abrogation, including, but not limited to, bonuses, rentals and royalties.

NOTE: The State of Louisiana does hereby reserve, and this lease shall be subject to, the imprescriptible right of surface use in the nature of a servitude in favor of the Department of Natural Resources, including its Offices and Commissions, for the sole purpose of implementing, constructing, servicing and maintaining approved coastal zone management and/or restoration projects. Utilization of any and all rights derived under this lease by the mineral lessee, its agents, successors or assigns, shall not interfere with nor hinder the reasonable surface use by the

Department of Natural Resources, its Offices or Commissions, as herein above reserved.

Applicant: GHJ LAND SERVICES, L.L.C.

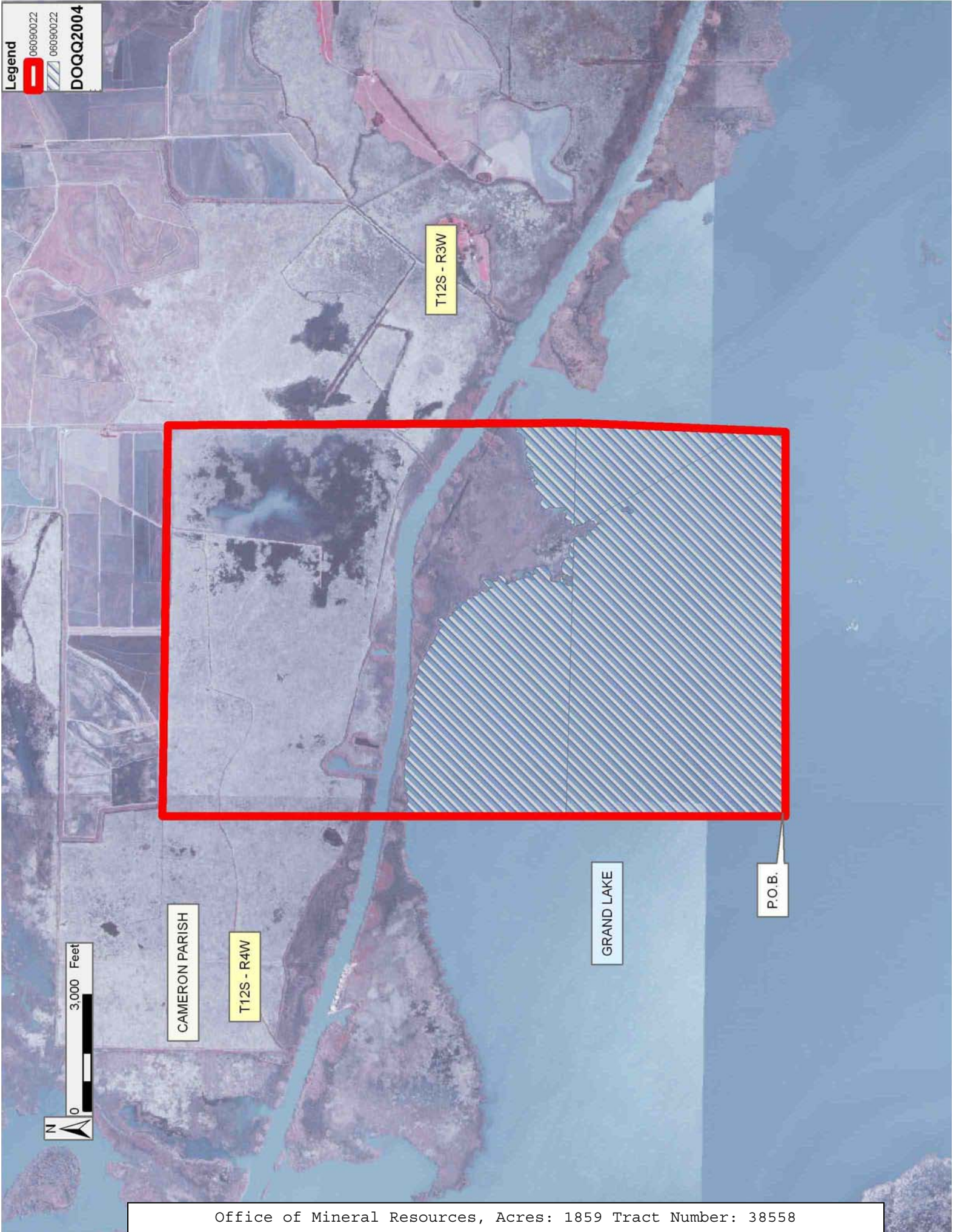
Bidder	Cash Payment	Price/ Acre	Rental	Oil	Gas	Other

Legend

 06090022

 06090022

DOQQ2004



**TRACT 38559 - Cameron Parish, Louisiana**

All of the lands now or formerly constituting the beds and bottoms of all water bodies of every nature and description the title of which vests in the State of Louisiana, together with all islands arising therein and other lands formed by accretion or by reliction, where allowed by law, excepting tax adjudicated lands, and not presently under mineral lease and cross hatched on September 13, 2006, situated in Cameron Parish, Louisiana, and more particularly described as follows: Beginning at a point having Coordinates of X = 1,534,492.10 and Y = 463,883.25; thence South 00 degrees 01 minutes 40 seconds West 12,638.72 feet to a point having Coordinates of X = 1,534,485.96 and Y = 451,244.53; thence North 89 degrees 45 minutes 33 seconds West 13,824.04 feet to a point having Coordinates of X = 1,520,662.04 and Y = 451,302.64; thence North 02 degrees 02 minutes 26 seconds East 12,593.88 feet to a point having Coordinates of X = 1,521,110.48 and Y = 463,888.53; thence South 89 degrees 58 minutes 39 seconds East 13,381.62 feet to the point of beginning, containing approximately **665 acres**, all as more particularly outlined on a plat on file in the Office of Mineral Resources, Department of Natural Resources. All bearings, distances and coordinates are based on Louisiana Coordinate System of 1927, (North or South Zone), where applicable.

NOTE: The above description of the Tract nominated for lease has been provided and corrected, where required, exclusively by the nomination party. Any mineral lease selected from this Tract and awarded by the Louisiana State Mineral Board shall be without warranty of any kind, either express, implied, or statutory, including, but not limited to, the implied warranties of merchantability and fitness for a particular purpose. Should the mineral lease awarded by the Louisiana State Mineral Board be subsequently modified, cancelled or abrogated due to the existence of conflicting leases, operating agreements, private claims or other future obligations or conditions which may affect all or any portion of the leased Tract, it shall not relieve the Lessee of the obligation to pay any bonus due thereon to the Louisiana State Mineral Board, nor shall the Louisiana State Mineral Board be obligated to refund any consideration paid by the Lessor prior to such modification, cancellation, or abrogation, including, but not limited to, bonuses, rentals and royalties.

NOTE: The State of Louisiana does hereby reserve, and this lease shall be subject to, the imprescriptible right of surface use in the nature of a servitude in favor of the Department of Natural Resources, including its Offices and Commissions, for the sole purpose of implementing, constructing, servicing and maintaining approved coastal zone management and/or restoration projects. Utilization of any and all rights derived under this lease by the mineral lessee, its agents, successors or assigns, shall not interfere with nor hinder the reasonable surface use by the Department of Natural Resources, its Offices or Commissions, as herein above reserved.



Applicant: GHJ LAND SERVICES, L.L.C.

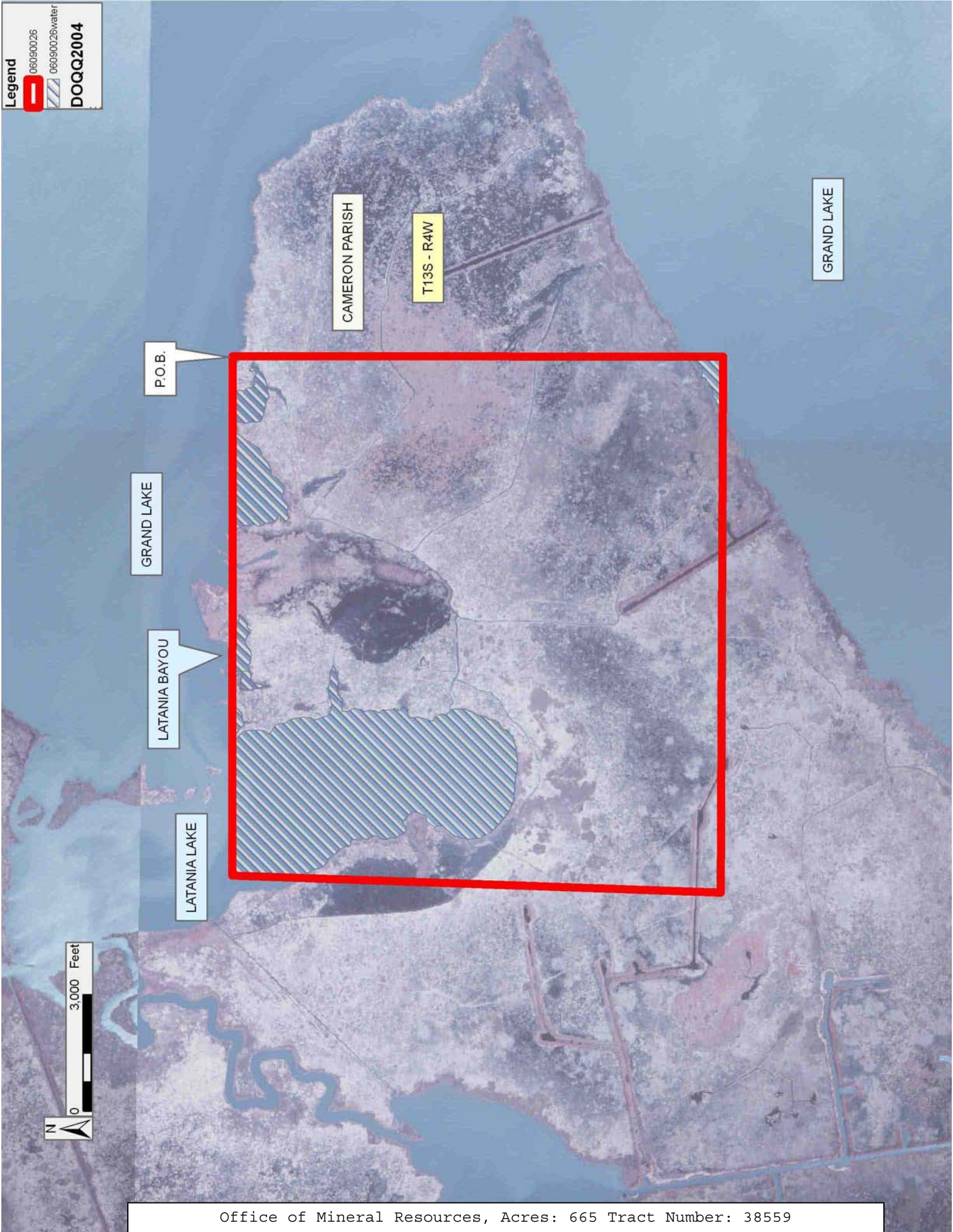
Bidder	Cash Payment	Price/ Acre	Rental	Oil	Gas	Other

Legend

 06090026

 06090026water

**DOQQ2004**



**TRACT 38560 - Cameron Parish, Louisiana**

All of the lands now or formerly constituting the beds and bottoms of all water bodies of every nature and description the title of which vests in the State of Louisiana, together with all islands arising therein and other lands formed by accretion or by reliction, where allowed by law, excepting tax adjudicated lands, and not presently under mineral lease and cross hatched on September 13, 2006, situated in Cameron Parish, Louisiana, and more particularly described as follows: Beginning at a point having Coordinates of X = 1,534,492.10 and Y = 463,883.25; thence South 89 degrees 58 minutes 39 seconds East 9,200.41 feet to a point having Coordinates of X = 1,543,692.51 and Y = 463,879.62; thence South 00 degrees 01 minutes 40 seconds West 12,673.77 feet to a point having Coordinates of X = 1,543,686.35 and Y = 451,205.86; thence North 89 degrees 45 minutes 33 seconds West 9,200.47 feet to a point having Coordinates of X = 1,534,485.96 and Y = 451,244.53; thence North 00 degrees 01 minutes 40 seconds East 12,638.72 feet to the point of beginning, containing approximately **1,215 acres**, all as more particularly outlined on a plat on file in the Office of Mineral Resources, Department of Natural Resources. All bearings, distances and coordinates are based on Louisiana Coordinate System of 1927, (North or South Zone), where applicable.

NOTE: The above description of the Tract nominated for lease has been provided and corrected, where required, exclusively by the nomination party. Any mineral lease selected from this Tract and awarded by the Louisiana State Mineral Board shall be without warranty of any kind, either express, implied, or statutory, including, but not limited to, the implied warranties of merchantability and fitness for a particular purpose. Should the mineral lease awarded by the Louisiana State Mineral Board be subsequently modified, cancelled or abrogated due to the existence of conflicting leases, operating agreements, private claims or other future obligations or conditions which may affect all or any portion of the leased Tract, it shall not relieve the Lessee of the obligation to pay any bonus due thereon to the Louisiana State Mineral Board, nor shall the Louisiana State Mineral Board be obligated to refund any consideration paid by the Lessor prior to such modification, cancellation, or abrogation, including, but not limited to, bonuses, rentals and royalties.

NOTE: The State of Louisiana does hereby reserve, and this lease shall be subject to, the imprescriptible right of surface use in the nature of a servitude in favor of the Department of Natural Resources, including its Offices and Commissions, for the sole purpose of implementing, constructing, servicing and maintaining approved coastal zone management and/or restoration projects. Utilization of any and all rights derived under this lease by the mineral lessee, its agents, successors or assigns, shall not interfere with nor hinder the reasonable surface use by the Department of Natural Resources, its Offices or Commissions, as herein above reserved.

Applicant: GHJ LAND SERVICES, L.L.C.

Bidder	Cash Payment	Price/ Acre	Rental	Oil	Gas	Other



Legend

 06090025

 06090025water

**DOQQ2004**

GRAND LAKE



P.O.B.

CAMERON PARISH

T13S - R4W

**TRACT 38561 - Cameron Parish, Louisiana**

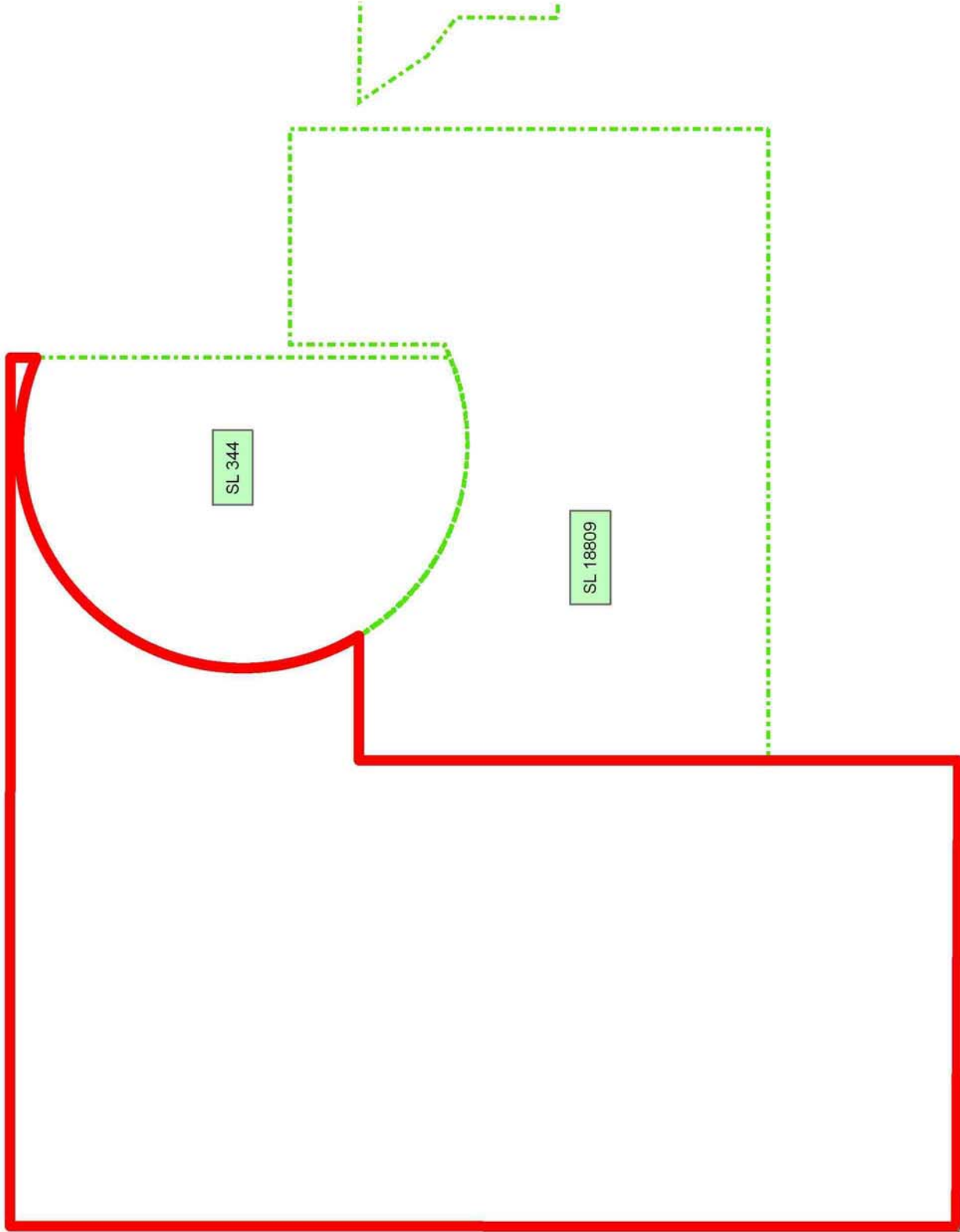
All of the lands now or formerly constituting the beds and bottoms of all water bodies of every nature and description the title of which vests in the State of Louisiana, together with all islands arising therein and other lands formed by accretion or by reliction, where allowed by law, excepting tax adjudicated lands, and not presently under mineral lease and cross hatched on September 13, 2006, situated in Cameron Parish, Louisiana, and more particularly described as follows: Beginning at a point having Coordinates of X = 1,543,686.35 and Y = 451,205.86; thence North 00 degrees 01 minutes 40 seconds East 12,673.77 feet to a point having Coordinates of X = 1,543,692.51 and Y = 463,879.62; thence South 89 degrees 58 minutes 39 seconds East 11,633.78 feet to a point having Coordinates of X = 1,555,326.29 and Y = 463,875.03; thence Southerly approximately 347 feet to the Northeast corner of State Lease No. 344, amended; thence Northerly and Southerly along the boundary of said State Lease No. 344, as amended, to a point on the boundary of State Lease No. 18809 having a Coordinate of Y = 459,207.00; thence West approximately 1,669 feet along a Northern boundary of said State Lease No. 18809 to a its Northwest corner having Coordinates of X = 1,549,933.00 and Y = 459,207.00; thence South 5,480.00 feet along the West boundary of said State Lease No. 18809 to its Southwest corner having Coordinates of X = 1,549,933.00 and Y = 453,727.00; thence South 2,547.40 feet to a point having Coordinates of X = 1,549,933.00 and Y = 451,179.60; thence North 89 degrees 45 minutes 33 seconds West 6,246.71 feet to the point of beginning, **LESS AND EXCEPT** any portion of said State Lease No. 18809, and said State Lease No. 344, as amended, that may lie within the above described tract, containing approximately **2,013 acres**, all as more particularly outlined on a plat on file in the Office of Mineral Resources, Department of Natural Resources. All bearings, distances and coordinates are based on Louisiana Coordinate System of 1927, (North or South Zone), where applicable.

NOTE: The above description of the Tract nominated for lease has been provided and corrected, where required, exclusively by the nomination party. Any mineral lease selected from this Tract and awarded by the Louisiana State Mineral Board shall be without warranty of any kind, either express, implied, or statutory, including, but not limited to, the implied warranties of merchantability and fitness for a particular purpose. Should the mineral lease awarded by the Louisiana State Mineral Board be subsequently modified, cancelled or abrogated due to the existence of conflicting leases, operating agreements, private claims or other future obligations or conditions which may affect all or any portion of the leased Tract, it shall not relieve the Lessee of the obligation to pay any bonus due thereon to the Louisiana State Mineral Board, nor shall the Louisiana State Mineral Board be obligated to refund any consideration paid by the Lessor prior to such modification, cancellation, or abrogation, including, but not limited to, bonuses, rentals and royalties.

NOTE: The State of Louisiana does hereby reserve, and this lease shall be subject to, the imprescriptible right of surface use in the nature of a servitude in favor of the Department of Natural Resources, including its Offices and Commissions, for the sole purpose of implementing, constructing, servicing and maintaining approved coastal zone management and/or restoration projects. Utilization of any and all rights derived under this lease by the mineral lessee, its agents, successors or assigns, shall not interfere with nor hinder the reasonable surface use by the Department of Natural Resources, its Offices or Commissions, as herein above reserved.

Applicant: GHJ LAND SERVICES, L.L.C.

Bidder	Cash Payment	Price/ Acre	Rental	Oil	Gas	Other



CAMERON PARISH

GRAND LAKE

T13S - R4W

P.O.B.



**TRACT 38562 - Cameron Parish, Louisiana**

All of the lands now or formerly constituting the beds and bottoms of all water bodies of every nature and description the title of which vests in the State of Louisiana, together with all islands arising therein and other lands formed by accretion or by reliction, where allowed by law, excepting tax adjudicated lands, and not presently under mineral lease and cross hatched on September 13, 2006, situated in Cameron Parish, Louisiana, and more particularly described as follows: Beginning at a point having Coordinates of X = 1,559,167.83 and Y = 451,140.78; thence North 89 degrees 45 minutes 33 seconds West 9,234.91 feet to a point having Coordinates of X = 1,549,933.00 and Y = 451,179.60; thence North 2,547.40 feet to the Southwest corner of State Lease No. 18809 having Coordinates of X = 1,549,933.00 and Y = 453,727.00; thence along the boundary of said State Lease No. 18809 the following courses: East 8,455.00 feet to a point having Coordinates of X = 1,558,388.00 and Y = 453,727.00; North 6,409.00 feet to a point having Coordinates of X = 1,558,388.00 and Y = 460,136.00; West 2,885.03 feet to a point having Coordinates of X = 1,555,502.97 and Y = 460,136.00; South 2,066.95 feet to a point having a Coordinate of Y = 458,069.05 and Southwesterly to point on the boundary of State Lease No. 344, as amended, having a Coordinate of X = 1,555,326.29; thence Northerly approximately 5,535 feet along the boundary of said State Lease No. 344 to its Northeast corner; thence Northerly approximately 347 feet to a point having Coordinates of X = 1,555,326.29 and Y = 463,875.03; thence South 89 degrees 58 minutes 39 seconds East 4,511.39 feet to a point having Coordinates of X = 1,559,837.68 and Y = 463,873.25; thence South 03 degrees 16 minutes 40 seconds West 4,682.52 feet to a point on the boundary of State Lease No. 1812, as amended, having Coordinates of X = 1,559,569.95 and Y = 459,198.39; thence along the boundary of said State Lease No. 1812 the following courses: North 89 degrees 17 minutes 54 seconds West 821.47 feet to a point having Coordinates of X = 1,558,748.54 and Y = 459,208.45; South 33 degrees 58 minutes 55 seconds East 1,094.48 feet to a point having Coordinates of X = 1,559,360.28 and Y = 458,300.89 and South 53 degrees 06 minutes 20 seconds East 198.72 feet to a point having Coordinates of X = 1,559,519.21 and Y = 458,181.59; thence South 02 degrees 51 minutes 25 seconds West 7,049.57 feet to the point of beginning, **LESS AND EXCEPT** any portion of said State Lease No. 18809, said State Lease No. 344, as amended, and said State Lease No. 1812, as amended, that may lie within the above described tract, containing approximately **1,081 acres**, all as more particularly outlined on a plat on file in the Office of Mineral Resources, Department of Natural Resources. All bearings, distances and coordinates are based on Louisiana Coordinate System of 1927, (North or South Zone), where applicable.

NOTE: The above description of the Tract nominated for lease has been provided and corrected, where required, exclusively by the nomination party. Any mineral lease selected from this Tract and awarded by the Louisiana State Mineral Board shall be without warranty of any kind, either express, implied, or statutory, including, but not limited to, the

implied warranties of merchantability and fitness for a particular purpose. Should the mineral lease awarded by the Louisiana State Mineral Board be subsequently modified, cancelled or abrogated due to the existence of conflicting leases, operating agreements, private claims or other future obligations or conditions which may affect all or any portion of the leased Tract, it shall not relieve the Lessee of the obligation to pay any bonus due thereon to the Louisiana State Mineral Board, nor shall the Louisiana State Mineral Board be obligated to refund any consideration paid by the Lessor prior to such modification, cancellation, or abrogation, including, but not limited to, bonuses, rentals and royalties.

NOTE: The State of Louisiana does hereby reserve, and this lease shall be subject to, the imprescriptible right of surface use in the nature of a servitude in favor of the Department of Natural Resources, including its Offices and Commissions, for the sole purpose of implementing, constructing, servicing and maintaining approved coastal zone management and/or restoration projects. Utilization of any and all rights derived under this lease by the mineral lessee, its agents, successors or assigns, shall not interfere with nor hinder the reasonable surface use by the Department of Natural Resources, its Offices or Commissions, as herein above reserved.

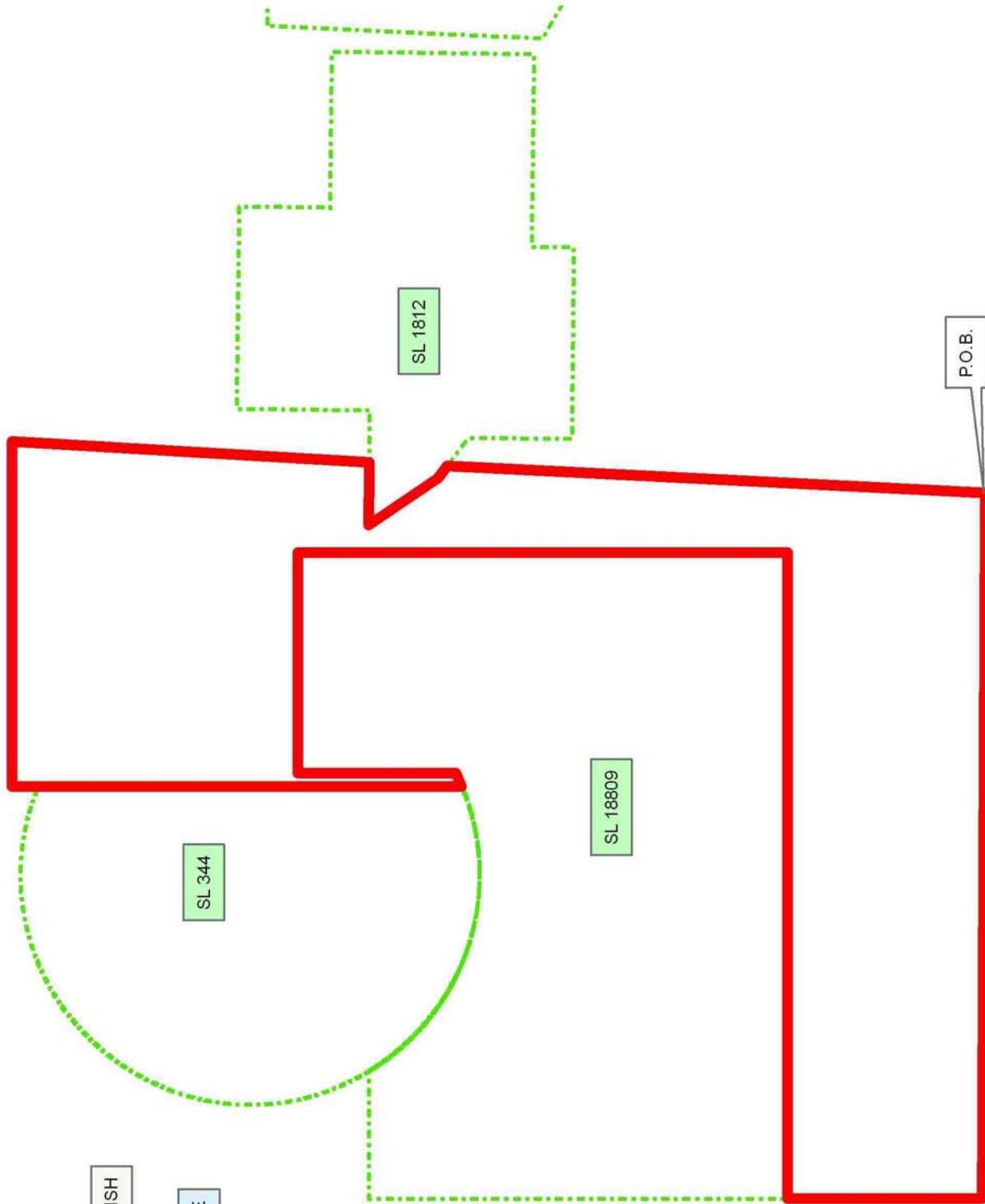
Applicant: GHJ LAND SERVICES, L.L.C.

Bidder	Cash Payment	Price/ Acre	Rental	Oil	Gas	Other



CAMERON PARISH

GRAND LAKE



**TRACT 38563 - Cameron Parish, Louisiana**

All of the lands now or formerly constituting the beds and bottoms of all water bodies of every nature and description the title of which vests in the State of Louisiana, together with all islands arising therein and other lands formed by accretion or by reliction, where allowed by law, excepting tax adjudicated lands, and not presently under mineral lease and cross hatched on September 13, 2006, situated in Cameron Parish, Louisiana, and more particularly described as follows: Beginning at a point having Coordinates of X = 1,520,215.64 and Y = 438,773.93; thence North 02 degrees 02 minutes 26 seconds East 12,536.67 feet to a point having Coordinates of X = 1,520,662.04 and Y = 451,302.64; thence South 89 degrees 45 minutes 33 seconds East 5,336.10 feet to a point having Coordinates of X = 1,525,998.09 and Y = 451,280.21; thence South 01 degrees 42 minutes 53 seconds West 12,621.95 feet to a point having Coordinates of X = 1,525,620.41 and Y = 438,663.92; thence North 88 degrees 50 minutes 02 seconds West 5,405.89 feet to the point of beginning, containing approximately **608 acres**, all as more particularly outlined on a plat on file in the Office of Mineral Resources, Department of Natural Resources. All bearings, distances and coordinates are based on Louisiana Coordinate System of 1927, (North or South Zone), where applicable.

NOTE: The above description of the Tract nominated for lease has been provided and corrected, where required, exclusively by the nomination party. Any mineral lease selected from this Tract and awarded by the Louisiana State Mineral Board shall be without warranty of any kind, either express, implied, or statutory, including, but not limited to, the implied warranties of merchantability and fitness for a particular purpose. Should the mineral lease awarded by the Louisiana State Mineral Board be subsequently modified, cancelled or abrogated due to the existence of conflicting leases, operating agreements, private claims or other future obligations or conditions which may affect all or any portion of the leased Tract, it shall not relieve the Lessee of the obligation to pay any bonus due thereon to the Louisiana State Mineral Board, nor shall the Louisiana State Mineral Board be obligated to refund any consideration paid by the Lessor prior to such modification, cancellation, or abrogation, including, but not limited to, bonuses, rentals and royalties.

NOTE: The State of Louisiana does hereby reserve, and this lease shall be subject to, the imprescriptible right of surface use in the nature of a servitude in favor of the Department of Natural Resources, including its Offices and Commissions, for the sole purpose of implementing, constructing, servicing and maintaining approved coastal zone management and/or restoration projects. Utilization of any and all rights derived under this lease by the mineral lessee, its agents, successors or assigns, shall not interfere with nor hinder the reasonable surface use by the Department of Natural Resources, its Offices or Commissions, as herein above reserved.



Applicant: GHJ LAND SERVICES, L.L.C.

Bidder	Cash Payment	Price/ Acre	Rental	Oil	Gas	Other

Legend

 060900027

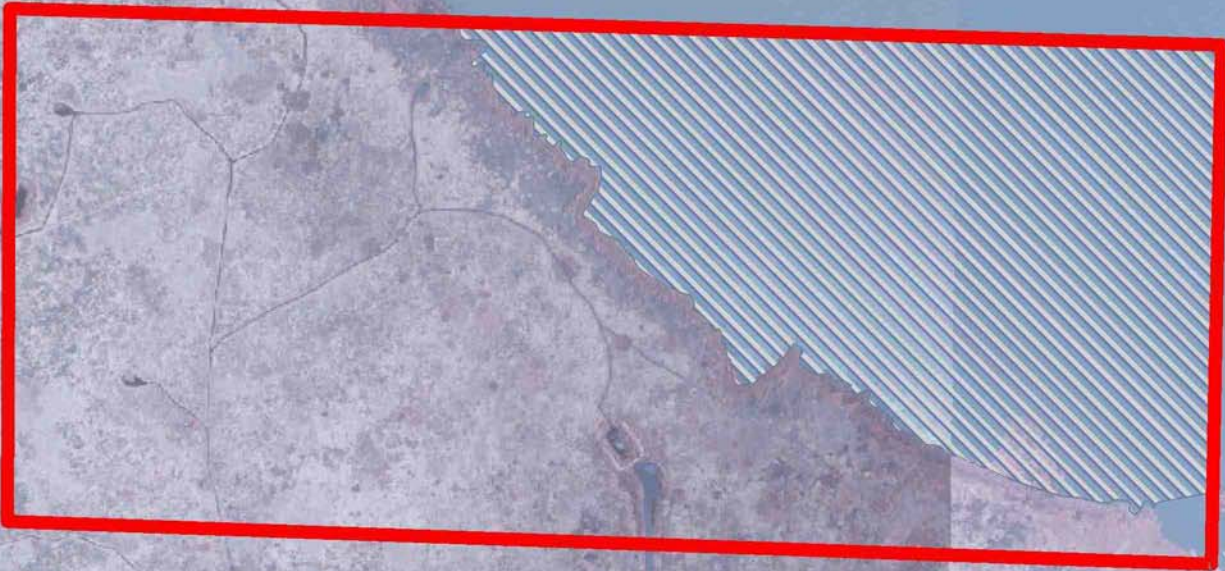
 060900027water

**DOQQ2004**

CAMERON PARISH

T13S - R4W

GRAND LAKE



P.O.B.

MERMENTAU RIVER

