

TRACT 38544 - Bossier Caddo and Red River Parishes, Louisiana

All of the lands now or formerly constituting the beds and bottoms of all water bodies of every nature and description the title of which vests in the State of Louisiana, together with all islands arising therein and other lands formed by accretion or by reliction, where allowed by law, excepting tax adjudicated lands, and not presently under mineral lease and cross hatched on September 13, 2006, situated in Bossier Caddo and Red River Parishes, Louisiana, and more particularly described as follows: Beginning at a point having Coordinates of X = 1,705,780.00 and Y = 572,947.00; thence South 8,715.00 feet to a point having Coordinates of X = 1,705,780.00 and Y = 564,232.00; thence West 13,800.00 feet to a point having Coordinates of X = 1,691,980.00 and Y = 564,232.00; thence North 8,715.00 feet to a point having Coordinates of X = 1,691,980.00 and Y = 572,947.00; thence East 13,800.00 feet to the point of beginning, **LESS AND EXCEPT** the state owned lands which may be located within the above described tract being described as follows: Lot 11 Section 36, Township 15 North, Range 11 West, Bossier Parish, Louisiana, Louisiana Meridian-Natchitoches/Northwestern Land District; which nominated area contains approximately **303 acres**, all as more particularly outlined on a plat on file in the Office of Mineral Resources, Department of Natural Resources. All bearings, distances and coordinates are based on Louisiana Coordinate System of 1927, (North or South Zone), where applicable.

NOTE: The above description of the Tract nominated for lease has been provided and corrected, where required, exclusively by the nomination party. Any mineral lease selected from this Tract and awarded by the Louisiana State Mineral Board shall be without warranty of any kind, either express, implied, or statutory, including, but not limited to, the implied warranties of merchantability and fitness for a particular purpose. Should the mineral lease awarded by the Louisiana State Mineral Board be subsequently modified, cancelled or abrogated due to the existence of conflicting leases, operating agreements, private claims or other future obligations or conditions which may affect all or any portion of the leased Tract, it shall not relieve the Lessee of the obligation to pay any bonus due thereon to the Louisiana State Mineral Board, nor shall the Louisiana State Mineral Board be obligated to refund any consideration paid by the Lessor prior to such modification, cancellation, or abrogation, including, but not limited to, bonuses, rentals and royalties.

Bidder	Cash Payment	Price/Acre	Rental	Oil	Gas	Other

Applicant: RIPPY OIL COMPANY

Legend

- 06090014
- 06090014water
- Counties
- DOQQ2004

P.O.B.

BOSSIER PARISH

CADDO PARISH

RED RIVER

RED RIVER PARISH

T14N - R11W

2,000 Feet



TRACT 38545 - Iberville Parish, Louisiana

All of the lands now or formerly constituting the beds and bottoms of all water bodies of every nature and description the title of which vests in the State of Louisiana, together with all islands arising therein and other lands formed by accretion or by reliction, where allowed by law, excepting tax adjudicated lands, and not presently under mineral lease and cross hatched on September 13, 2006, situated in Iberville Parish, Louisiana, and more particularly described as follows: Beginning at a point having Coordinates of X = 1,933,300.00 and Y = 603,500.00; thence North 10,800.00 feet to a point having Coordinates of X = 1,933,300.00 and Y = 614,300.00; thence East 10,400.00 feet to a point having Coordinates of X = 1,943,700.00 and Y = 614,300.00; thence South approximately 9,997 feet to a point on the Northern boundary of State Lease No. 4259, as amended; thence Northwesterly approximately 813 feet along the boundary of said State Lease No. 4259 to its Northwest corner, also being the Northeast corner of State Lease No. 4219, as amended; thence along the boundary of said State Lease No. 4219 the following courses: Northwesterly approximately 1,785 feet to its Northwest corner and Southerly approximately 1,096 feet to a point having a Coordinate of Y = 603,500.00; thence West approximately 7,817 feet to the point of beginning, **LESS AND EXECPT** that portion, if any, of State Lease No. 4259, as amended, and State Lease No. 4219, as amended, that may lie within the above described tract, containing approximately **63 acres**, all as more particularly outlined on a plat on file in the Office of Mineral Resources, Department of Natural Resources. All bearings, distances and coordinates are based on Louisiana Coordinate System of 1927, (North or South Zone), where applicable.

NOTE: The above description of the Tract nominated for lease has been provided and corrected, where required, exclusively by the nomination party. Any mineral lease selected from this Tract and awarded by the Louisiana State Mineral Board shall be without warranty of any kind, either express, implied, or statutory, including, but not limited to, the implied warranties of merchantability and fitness for a particular purpose. Should the mineral lease awarded by the Louisiana State Mineral Board be subsequently modified, cancelled or abrogated due to the existence of conflicting leases, operating agreements, private claims or other future obligations or conditions which may affect all or any portion of the leased Tract, it shall not relieve the Lessee of the obligation to pay any bonus due thereon to the Louisiana State Mineral Board, nor shall the Louisiana State Mineral Board be obligated to refund any consideration paid by the Lessor prior to such modification, cancellation, or abrogation, including, but not limited to, bonuses, rentals and royalties.

Applicant: A. S. RUFFIN, JR.

Bidder	Cash Payment	Price/Acre	Rental	Oil	Gas	Other

Legend

-  06090038
-  06090038water2
-  Active_Leases

DOQQ2004

IBERVILLE PARISH

T8S - R9E

BAYOU MARINGOUIN

SL 4259

SL 4219

P.O.B.



TRACT 38546 - Iberville Parish, Louisiana

All of the lands now or formerly constituting the beds and bottoms of all water bodies of every nature and description the title of which vests in the State of Louisiana, together with all islands arising therein and other lands formed by accretion or by reliction, where allowed by law, excepting tax adjudicated lands, and not presently under mineral lease and cross hatched on September 13, 2006, situated in Iberville Parish, Louisiana, and more particularly described as follows: Beginning at a point having Coordinates of X = 1,952,700.00 and Y = 588,000.00; thence West 10,400.00 feet to a point having Coordinates of X = 1,942,300.00 and Y = 588,000.00; thence Northerly approximately 12,894 feet to the Southwest corner of State Lease No. 4259, as amended; thence Northeasterly approximately 3,487 feet along the Southern boundary of said State Lease No. 4259, as amended, to its most Easterly Northeast corner; thence Northeasterly approximately 7,105 feet to a point having Coordinates of X = 1,952,700.00 and Y = 602,400.00; thence South 14,400.00 feet to the point of beginning, **LESS AND EXECPT** that portion, if any, of State Lease No. 4259, as amended, that may lie within the above described tract, containing approximately **135 acres**, all as more particularly outlined on a plat on file in the Office of Mineral Resources, Department of Natural Resources. All bearings, distances and coordinates are based on Louisiana Coordinate System of 1927, (North or South Zone), where applicable.

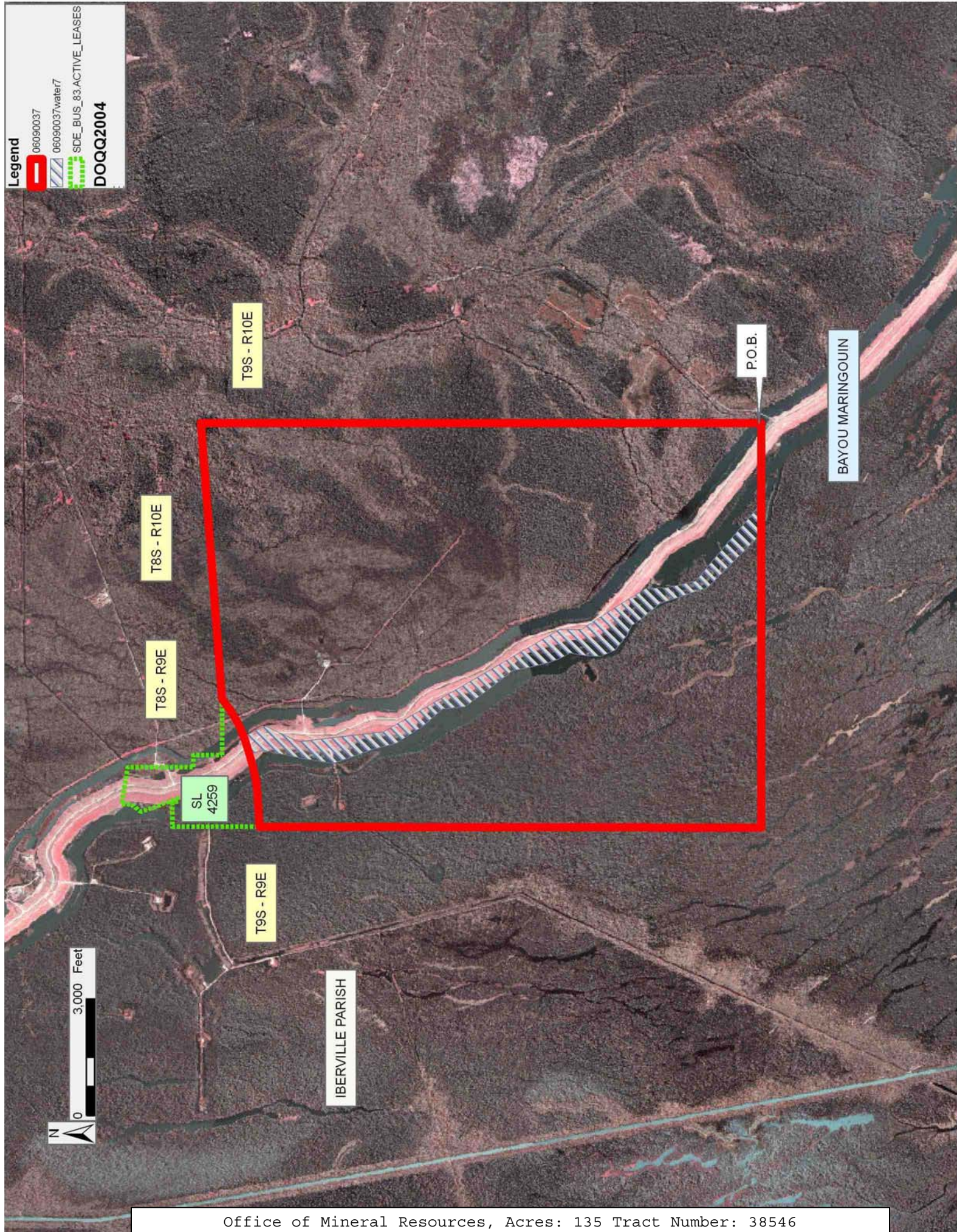
NOTE: The above description of the Tract nominated for lease has been provided and corrected, where required, exclusively by the nomination party. Any mineral lease selected from this Tract and awarded by the Louisiana State Mineral Board shall be without warranty of any kind, either express, implied, or statutory, including, but not limited to, the implied warranties of merchantability and fitness for a particular purpose. Should the mineral lease awarded by the Louisiana State Mineral Board be subsequently modified, cancelled or abrogated due to the existence of conflicting leases, operating agreements, private claims or other future obligations or conditions which may affect all or any portion of the leased Tract, it shall not relieve the Lessee of the obligation to pay any bonus due thereon to the Louisiana State Mineral Board, nor shall the Louisiana State Mineral Board be obligated to refund any consideration paid by the Lessor prior to such modification, cancellation, or abrogation, including, but not limited to, bonuses, rentals and royalties.

Applicant: A. S. RUFFIN, JR.

Bidder	Cash Payment	Price/Acre	Rental	Oil	Gas	Other

Legend

- 060900037
- 060900037water7
- SDE_BUS_83_ACTIVE_LEASES
- DOQQ2004



TRACT 38547 - Calcasieu Parish, Louisiana

All of the lands now or formerly constituting the beds and bottoms of all water bodies of every nature and description the title of which vests in the State of Louisiana, together with all islands arising therein and other lands formed by accretion or by reliction, where allowed by law, excepting tax adjudicated lands, and not presently under mineral lease and cross hatched on September 13, 2006, situated in Calcasieu Parish, Louisiana, and more particularly described as follows: Beginning at a point having Coordinates of X = 1,448,300.00 and Y = 606,000.00; thence South 4,600.00 feet to a point having Coordinates X = 1,448,300.00 and Y = 601,400.00; thence West 15,500.00 feet to a point having Coordinates of X = 1,432,800.00 and Y = 601,400.00; thence North 4,600.00 feet to a point having Coordinates of X = 1,432,800.00 and Y = 606,000.00; thence East 3,590.28 feet to a point on the West line of State Lease No. 18559 having Coordinates of X = 1,436,390.28 and Y = 606,000.00; thence along the boundary of said State Lease No. 18559 the following courses: South 106.27 feet to a point having Coordinates of X = 1,436,390.28 and Y = 605,893.73; South 88 degrees 33 minutes 20 seconds East 6,600.00 feet to a point having Coordinates of X = 1,442,988.18 and Y = 605,727.36 and North 00 degrees 58 minutes 17 seconds East 272.68 feet to a point having Coordinates of X = 1,442,992.80 and Y = 606,000.00; thence East 5,307.20 feet to the point of beginning, **LESS AND EXCEPT** the state owned lands which may be located within the above described tract being described as follows: Lot 13 Section 32, Township 8 South, Range 7 West, Calcasieu Parish, Louisiana, Opelousas/Southwestern, Ranges West Districts Selected 12/7/1850, Approved 5/6/1852; which nominated area contains approximately **80 acres**, all as more particularly outlined on a plat on file in the Office of Mineral Resources, Department of Natural Resources. All bearings, distances and coordinates are based on Louisiana Coordinate System of 1927, (North or South Zone), where applicable.

NOTE: The above description of the Tract nominated for lease has been provided and corrected, where required, exclusively by the nomination party. Any mineral lease selected from this Tract and awarded by the Louisiana State Mineral Board shall be without warranty of any kind, either express, implied, or statutory, including, but not limited to, the implied warranties of merchantability and fitness for a particular purpose. Should the mineral lease awarded by the Louisiana State Mineral Board be subsequently modified, cancelled or abrogated due to the existence of conflicting leases, operating agreements, private claims or other future obligations or conditions which may affect all or any portion of the leased Tract, it shall not relieve the Lessee of the obligation to pay any bonus due thereon to the Louisiana State Mineral Board, nor shall the Louisiana State Mineral Board be obligated to refund any consideration paid by the Lessor prior to such modification, cancellation, or abrogation, including, but not limited to, bonuses, rentals and royalties.

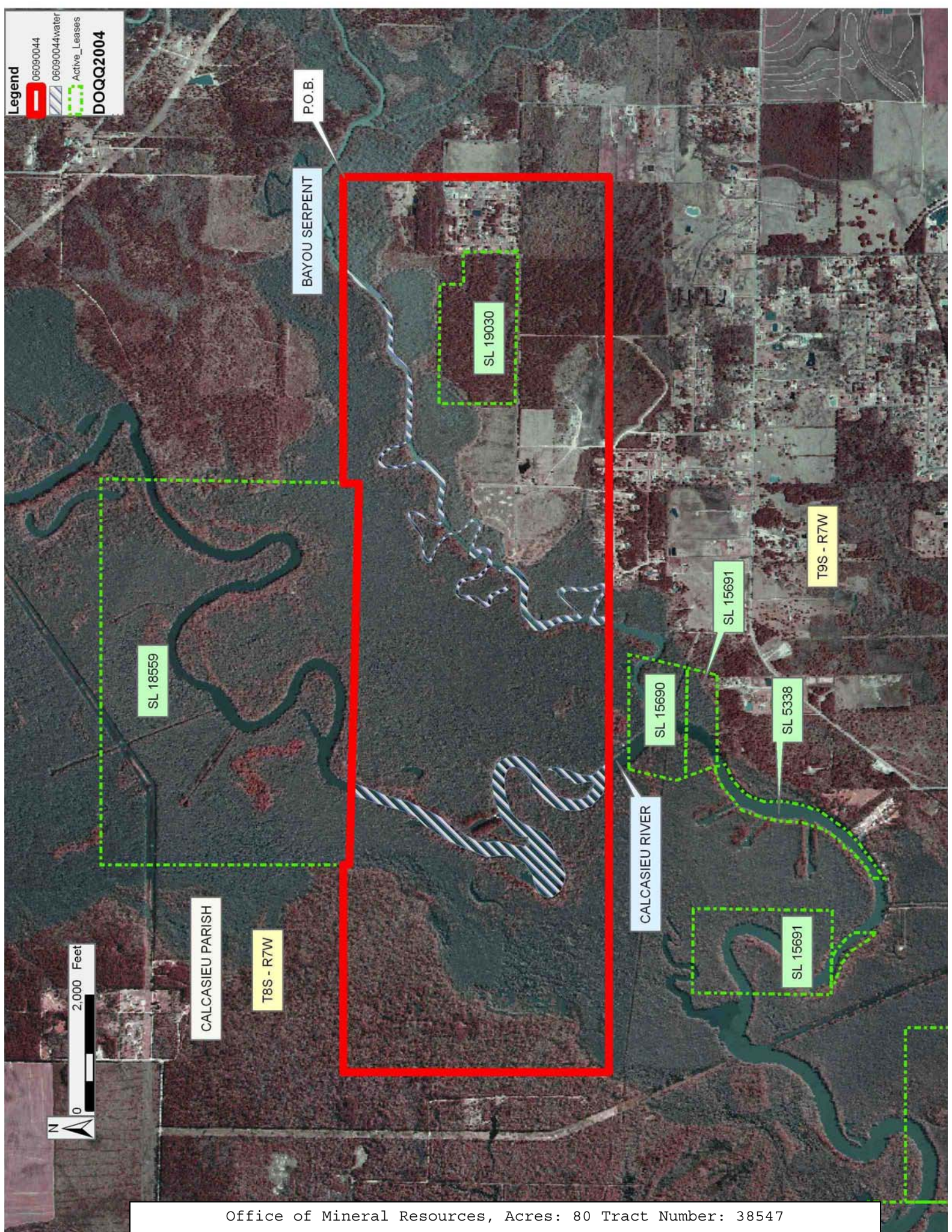
NOTE: The above Tract is located upon a restricted scenic river and all operations in this area must be conducted in strict conformity with the regulations of the Corps of Engineers, U.S. Army.

Applicant: MOUNTAIN LAKE

Bidder	Cash Payment	Price/Acre	Rental	Oil	Gas	Other

Legend

- 06090044
- 06090044water
- Active_Leases
- DOQQ2004



P.O.B.

BAYOU SERPENT

SL 19030

SL 18559

T9S - R7W

SL 15691

SL 15690

SL 5338

CALCASIEU RIVER

CALCASIEU PARISH

T8S - R7W

SL 15691



TRACT 38548 - Calcasieu Parish, Louisiana

All of the lands now or formerly constituting the beds and bottoms of all water bodies of every nature and description the title of which vests in the State of Louisiana, together with all islands arising therein and other lands formed by accretion or by reliction, where allowed by law, excepting tax adjudicated lands, and not presently under mineral lease and cross hatched on September 13, 2006, situated in Calcasieu Parish, Louisiana, and more particularly described as follows: Beginning at a point having Coordinates of X = 1,256,427.81 and Y = 601,350.04; thence South 13,238.34 feet to a point having Coordinates of X = 1,256,427.81 and Y = 588,111.70; thence West 7,559.75 feet to a point having Coordinates of X = 1,248,868.07 and Y = 588,111.70; thence North 7,288.30 feet to a point on the South boundary of State Lease No. 19014 having Coordinates of X = 1,248,868.07 and Y = 595,400.00; thence along said State Lease No. 19014 the following courses: East 4,731.93 feet to a point having Coordinates of X = 1,253,600.00 and Y = 595,400.00 and North 5,950.04 feet to a point having Coordinates of X = 1,253,600.00 and Y = 601,350.04; thence East 2,827.81 feet to the point of beginning, **LESS AND EXCEPT** all that portion, if any, that lies within the Sabine Island Wildlife Management Area, containing approximately **94 acres, LESS AND EXCEPT** that portion thereof, if any, located West of the boundary line between the States of Texas and Louisiana as determined by the report of the Special Master and adjudicated by the Supreme Court of the United States in litigation styled **Texas v. Louisiana, et al No. 36 Original**, or as otherwise approved by said court, all as more particularly outlined on a plat on file in the Office of Mineral Resources, Department of Natural Resources. All bearings, distances and coordinates are based on Louisiana Coordinate System of 1927, (North or South Zone), where applicable.

NOTE: The above description of the Tract nominated for lease has been provided and corrected, where required, exclusively by the nomination party. Any mineral lease selected from this Tract and awarded by the Louisiana State Mineral Board shall be without warranty of any kind, either express, implied, or statutory, including, but not limited to, the implied warranties of merchantability and fitness for a particular purpose. Should the mineral lease awarded by the Louisiana State Mineral Board be subsequently modified, cancelled or abrogated due to the existence of conflicting leases, operating agreements, private claims or other future obligations or conditions which may affect all or any portion of the leased Tract, it shall not relieve the Lessee of the obligation to pay any bonus due thereon to the Louisiana State Mineral Board, nor shall the Louisiana State Mineral Board be obligated to refund any consideration paid by the Lessor prior to such modification, cancellation, or abrogation, including, but not limited to, bonuses, rentals and royalties.

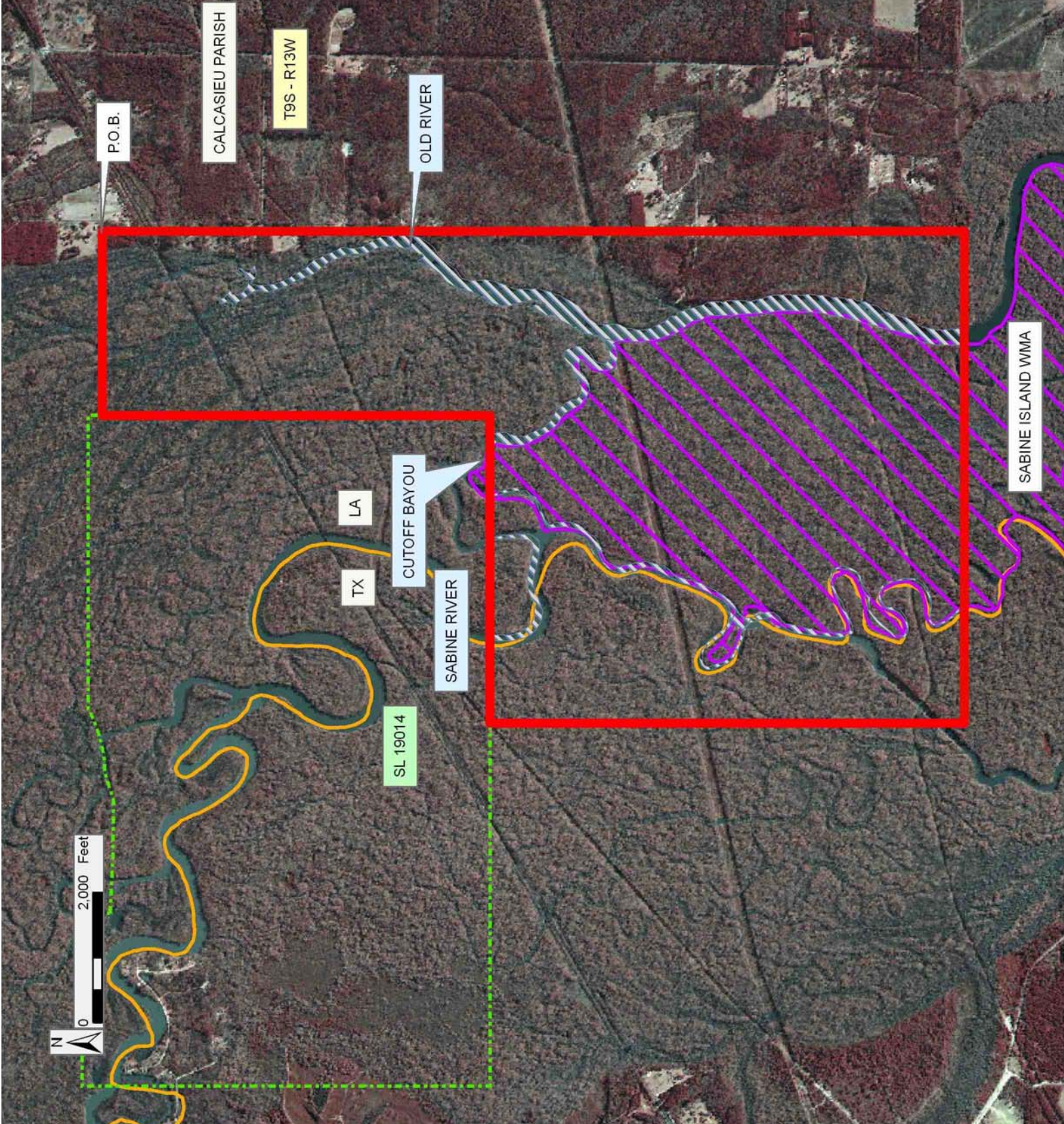
Applicant: AJL ENERGY

Bidder	Cash Payment	Price/Acre	Rental	Oil	Gas	Other

Legend

-  06090040
-  06090040water
-  Wildlife
-  Active_Leases
-  Counties

DOQQ2004



TRACT 38549 - St. James Parish, Louisiana

All of the lands now or formerly constituting the beds and bottoms of all water bodies of every nature and description the title of which vests in the State of Louisiana, together with all islands arising therein and other lands formed by accretion or by reliction, where allowed by law, excepting tax adjudicated lands, and not presently under mineral lease and cross hatched on September 13, 2006, situated in St. James Parish, Louisiana, and more particularly described as follows: Beginning at a point having Coordinates of X = 2,195,308.00 and Y = 503,432.00; thence South 20 degrees 48 minutes 39 seconds East 16,102.56 feet to a point having Coordinates of X = 2,201,029.00 and Y = 488,380.00; thence South 69 degrees 11 minutes 16 seconds West 18,479.81 feet to a point having Coordinates of X = 2,183,755.00 and Y = 481,814.00; thence North 20 degrees 48 minutes 39 seconds West 16,102.56 feet to a point having Coordinates of X = 2,178,034.00 and Y = 496,866.00; thence North 69 degrees 11 minutes 16 seconds East 18,479.81 feet to the point of beginning, containing approximately **1,116 acres**, all as more particularly outlined on a plat on file in the Office of Mineral Resources, Department of Natural Resources. All bearings, distances and coordinates are based on Louisiana Coordinate System of 1927, (North or South Zone), where applicable.

NOTE: The above description of the Tract nominated for lease has been provided and corrected, where required, exclusively by the nomination party. Any mineral lease selected from this Tract and awarded by the Louisiana State Mineral Board shall be without warranty of any kind, either express, implied, or statutory, including, but not limited to, the implied warranties of merchantability and fitness for a particular purpose. Should the mineral lease awarded by the Louisiana State Mineral Board be subsequently modified, cancelled or abrogated due to the existence of conflicting leases, operating agreements, private claims or other future obligations or conditions which may affect all or any portion of the leased Tract, it shall not relieve the Lessee of the obligation to pay any bonus due thereon to the Louisiana State Mineral Board, nor shall the Louisiana State Mineral Board be obligated to refund any consideration paid by the Lessor prior to such modification, cancellation, or abrogation, including, but not limited to, bonuses, rentals and royalties.

NOTE: The State of Louisiana does hereby reserve, and this lease shall be subject to, the imprescriptible right of surface use in the nature of a servitude in favor of the Department of Natural Resources, including its Offices and Commissions, for the sole purpose of implementing, constructing, servicing and maintaining approved coastal zone management and/or restoration projects. Utilization of any and all rights derived under this lease by the mineral lessee, its agents, successors or assigns, shall not interfere with nor hinder the reasonable surface use by the Department of Natural Resources, its Offices or Commissions, as herein above reserved.

Applicant: PATRICK L. DONOHUE PETROLEUM PROPERTIES, INC.

Bidder	Cash Payment	Price/Acre	Rental	Oil	Gas	Other

Legend
060900033
060900033water
DOQQ2004

P.O.B.



MISSISSIPPI RIVER

ST JAMES PARISH

T12S - R17E

TRACT 38550 - Vermilion Parish, Louisiana

All of the lands now or formerly constituting the beds and bottoms of all water bodies of every nature and description the title of which vests in the State of Louisiana, together with all islands arising therein and other lands formed by accretion or by reliction, where allowed by law, excepting tax adjudicated lands, and not presently under mineral lease and cross hatched on September 13, 2006, situated in Vermilion Parish, Louisiana, and more particularly described as follows: Beginning at a point having Coordinates of X = 1,756,630.00 and Y = 498,645.00; thence East 6,588.67 feet to a point on the West boundary of State Lease No. 18374 having Coordinates of X = 1,763,218.67 and Y = 498,645.00; thence along the boundary of said State Lease No. 18374 the following courses: South 11 degrees 23 minutes 53 seconds East 4,667.05 feet to a point having Coordinates of X = 1,764,141.00 and Y = 494,070.00 and North 84 degrees 14 minutes 54 seconds East 3,657.41 feet to a point having Coordinates of X = 1,767,780.00 and Y = 494,436.53; thence South 13,436.53 feet to a point having Coordinates of X = 1,767,780.00 and Y = 481,000.00; thence West 11,150.00 feet to a point having Coordinates of X = 1,756,630.00 and Y = 481,000.00; thence North 17,645.00 feet to the point of beginning, containing approximately **52 acres**, all as more particularly outlined on a plat on file in the Office of Mineral Resources, Department of Natural Resources. All bearings, distances and coordinates are based on Louisiana Coordinate System of 1927, (North or South Zone), where applicable.

NOTE: The above description of the Tract nominated for lease has been provided and corrected, where required, exclusively by the nomination party. Any mineral lease selected from this Tract and awarded by the Louisiana State Mineral Board shall be without warranty of any kind, either express, implied, or statutory, including, but not limited to, the implied warranties of merchantability and fitness for a particular purpose. Should the mineral lease awarded by the Louisiana State Mineral Board be subsequently modified, cancelled or abrogated due to the existence of conflicting leases, operating agreements, private claims or other future obligations or conditions which may affect all or any portion of the leased Tract, it shall not relieve the Lessee of the obligation to pay any bonus due thereon to the Louisiana State Mineral Board, nor shall the Louisiana State Mineral Board be obligated to refund any consideration paid by the Lessor prior to such modification, cancellation, or abrogation, including, but not limited to, bonuses, rentals and royalties.

NOTE: The State of Louisiana does hereby reserve, and this lease shall be subject to, the imprescriptible right of surface use in the nature of a servitude in favor of the Department of Natural Resources, including its Offices and Commissions, for the sole purpose of implementing, constructing, servicing and maintaining approved coastal zone management and/or restoration projects. Utilization of any and all rights derived under this lease by the mineral lessee, its agents, successors or assigns, shall not interfere with nor hinder the reasonable surface use by the

Department of Natural Resources, its Offices or Commissions, as herein above reserved.

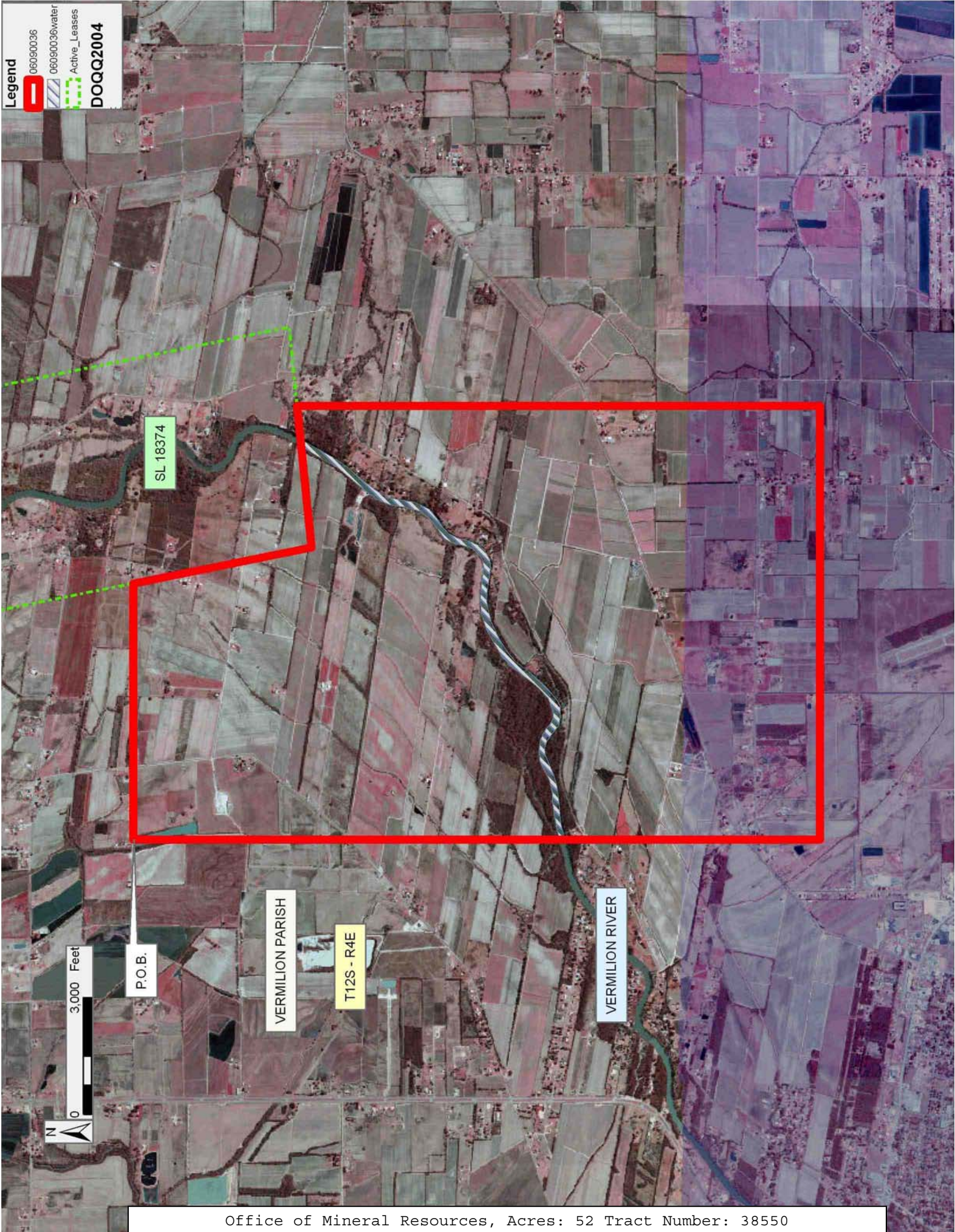
Applicant: AMEX RESOURCES, INC.

Bidder	Cash Payment	Price/Acre	Rental	Oil	Gas	Other

Legend

-  06090036
-  06090036water
-  Active_Leases

DOQQ2004



SL 18374

P.O.B.

VERMILION PARISH

T12S - R4E

VERMILION RIVER

0 3,000 Feet



TRACT 38551 - Vermilion Parish, Louisiana

All of the lands now or formerly constituting the beds and bottoms of all water bodies of every nature and description the title of which vests in the State of Louisiana, together with all islands arising therein and other lands formed by accretion or by reliction, where allowed by law, excepting tax adjudicated lands, and not presently under mineral lease and cross hatched on September 13, 2006, situated in Vermilion Parish, Louisiana, and more particularly described as follows: Beginning at a point having Coordinates of X = 1,745,480.00 and Y = 494,985.00; thence East 11,150.00 feet to a point having Coordinates of X = 1,756,630.00 and Y = 494,985.00; thence South 17,645.00 feet to a point having Coordinates of X = 1,756,630.00 and Y = 477,340.00; thence West 11,150.00 feet to a point having Coordinates of X = 1,745,480.00 and Y = 477,340.00; thence North 17,645.00 feet to the point of beginning, **LESS AND EXCEPT** the state owned lands which may be located within the above described tract being described as follows: The Louisiana Technical College Gulf Area Campus being in Abbeville on Clover Street, Section 47, Township 12 South, Range 3 East; which nominated area contains approximately **58 acres**, all as more particularly outlined on a plat on file in the Office of Mineral Resources, Department of Natural Resources. All bearings, distances and coordinates are based on Louisiana Coordinate System of 1927, (North or South Zone), where applicable.

NOTE: The above description of the Tract nominated for lease has been provided and corrected, where required, exclusively by the nomination party. Any mineral lease selected from this Tract and awarded by the Louisiana State Mineral Board shall be without warranty of any kind, either express, implied, or statutory, including, but not limited to, the implied warranties of merchantability and fitness for a particular purpose. Should the mineral lease awarded by the Louisiana State Mineral Board be subsequently modified, cancelled or abrogated due to the existence of conflicting leases, operating agreements, private claims or other future obligations or conditions which may affect all or any portion of the leased Tract, it shall not relieve the Lessee of the obligation to pay any bonus due thereon to the Louisiana State Mineral Board, nor shall the Louisiana State Mineral Board be obligated to refund any consideration paid by the Lessor prior to such modification, cancellation, or abrogation, including, but not limited to, bonuses, rentals and royalties.

NOTE: The State of Louisiana does hereby reserve, and this lease shall be subject to, the imprescriptible right of surface use in the nature of a servitude in favor of the Department of Natural Resources, including its Offices and Commissions, for the sole purpose of implementing, constructing, servicing and maintaining approved coastal zone management and/or restoration projects. Utilization of any and all rights derived under this lease by the mineral lessee, its agents, successors or assigns, shall not interfere with nor hinder the reasonable surface use by the Department of Natural Resources, its Offices or Commissions, as herein above reserved.

Applicant: AMEX RESOURCES, INC.

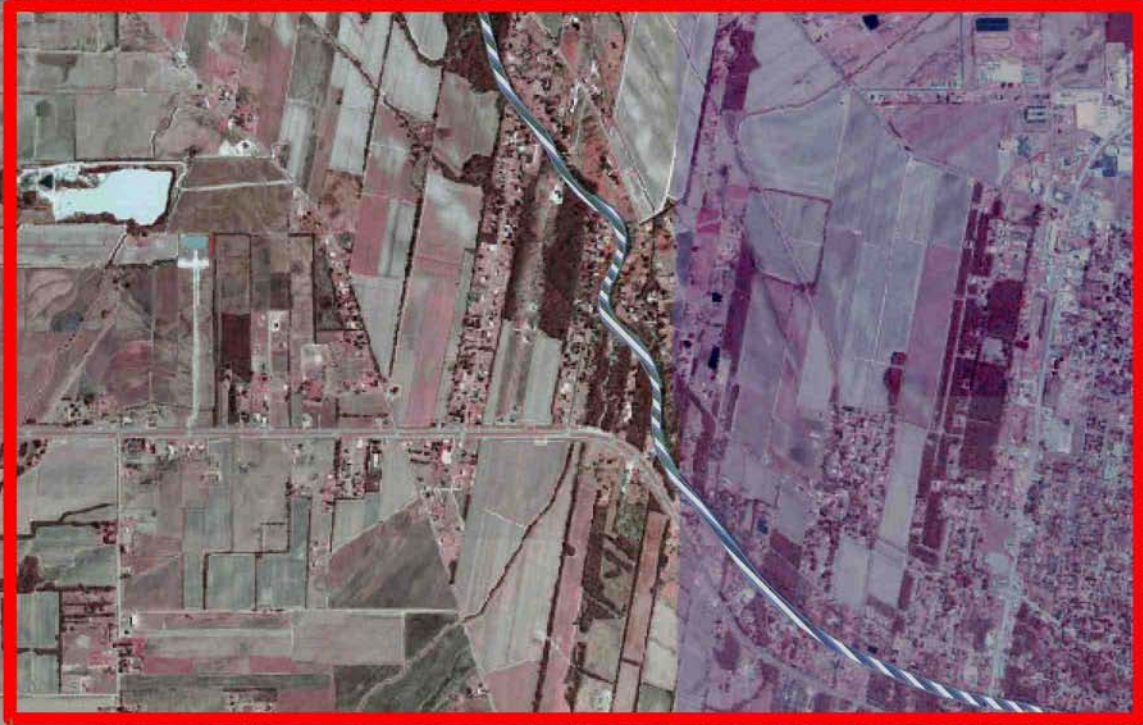
Bidder	Cash Payment	Price/Acre	Rental	Oil	Gas	Other

Legend
06090035
06090035
DOQQ2004

VERMILION PARISH

T12S - R4E

VERMILION RIVER



0
3,000 Feet



P.O.B.

T12S - R3E

TRACT 38552 - Vermilion Parish, Louisiana

All of the lands now or formerly constituting the beds and bottoms of all water bodies of every nature and description the title of which vests in the State of Louisiana, together with all islands arising therein and other lands formed by accretion or by reliction, where allowed by law, excepting tax adjudicated lands, and not presently under mineral lease and cross hatched on September 13, 2006, situated in Vermilion Parish, Louisiana, and more particularly described as follows: Beginning at a point having Coordinates of X = 1,734,330.00 and Y = 489,620.00; thence East 11,150.00 feet to a point having Coordinates of X = 1,745,480.00 and Y = 489,620.00; thence South 17,645.00 feet to a point having Coordinates of X = 1,745,480.00 and Y = 471,975.00; thence West 11,150.00 feet to a point having Coordinates of X = 1,734,330.00 and Y = 471,975.00; thence North 17,645.00 feet to the point of beginning, **LESS AND EXCEPT** the state owned lands which maybe located within the above described tract being described as follows: The Abbeville Maintenance Unit being Lots 14, 15, & 16 in Shadyside Addition of Abbeville and 5.048 acres in Section 46, Township 12 South, Range 3 East, **ALSO LESS AND EXCEPT** the state owned lands which may be located within the above described tract being described as follows: The Department of Wildlife and Fisheries boat launch in Abbeville being 0.198 acres in the Eastern part of Section 50, Township 12 South, Range 3 East, fronting 116 feet on the Vermillion River, 90 feet on Highway 335, 124 feet on the North and 60.5 feet on the South; which nominated area contains approximately **101 acres**, all as more particularly outlined on a plat on file in the Office of Mineral Resources, Department of Natural Resources. All bearings, distances and coordinates are based on Louisiana Coordinate System of 1927, (North or South Zone), where applicable.

NOTE: The above description of the Tract nominated for lease has been provided and corrected, where required, exclusively by the nomination party. Any mineral lease selected from this Tract and awarded by the Louisiana State Mineral Board shall be without warranty of any kind, either express, implied, or statutory, including, but not limited to, the implied warranties of merchantability and fitness for a particular purpose. Should the mineral lease awarded by the Louisiana State Mineral Board be subsequently modified, cancelled or abrogated due to the existence of conflicting leases, operating agreements, private claims or other future obligations or conditions which may affect all or any portion of the leased Tract, it shall not relieve the Lessee of the obligation to pay any bonus due thereon to the Louisiana State Mineral Board, nor shall the Louisiana State Mineral Board be obligated to refund any consideration paid by the Lessor prior to such modification, cancellation, or abrogation, including, but not limited to, bonuses, rentals and royalties.

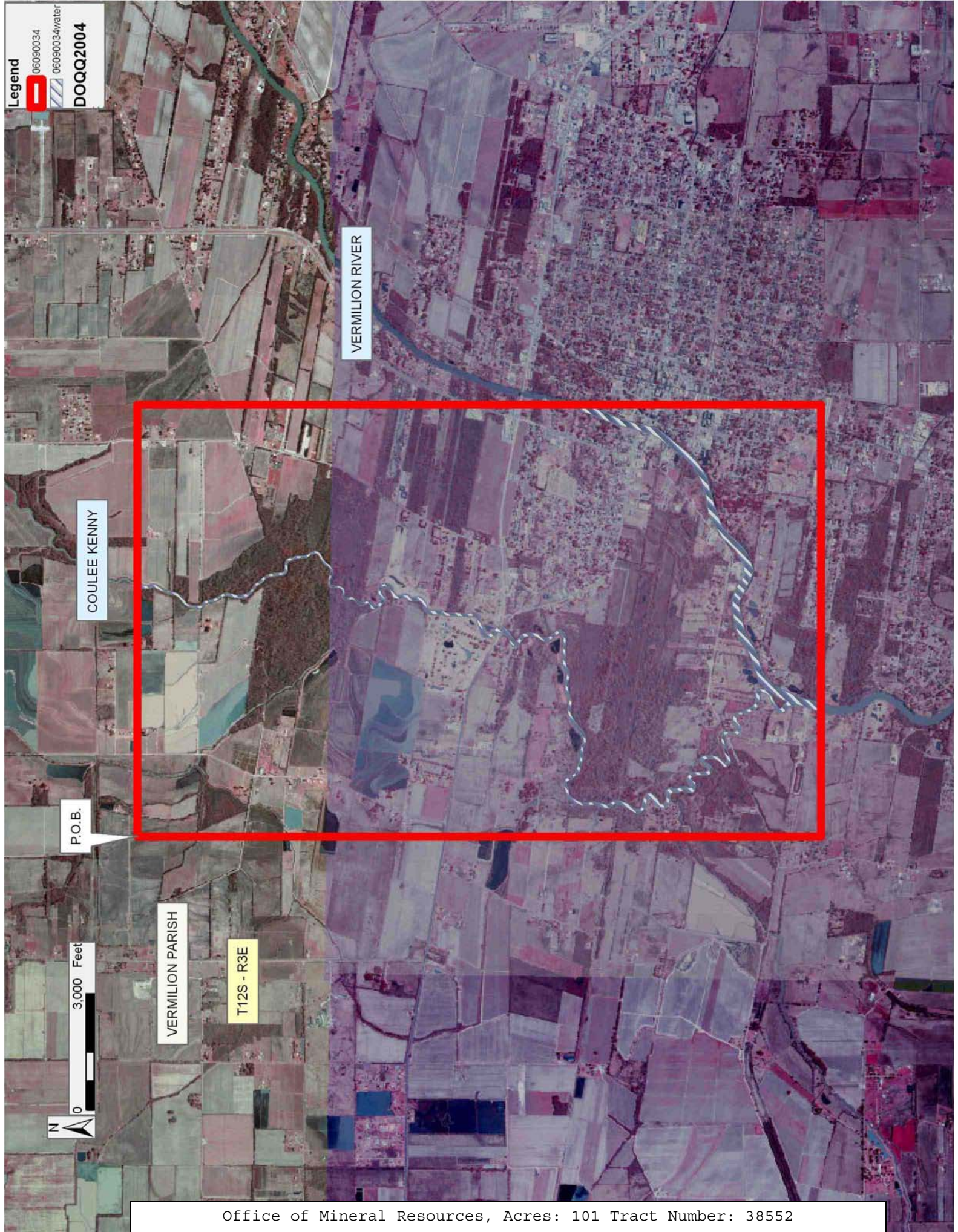
NOTE: The State of Louisiana does hereby reserve, and this lease shall be subject to, the imprescriptible right of surface use in the nature of a servitude in favor of the Department of Natural Resources, including its Offices and Commissions, for the sole purpose of implementing,

constructing, servicing and maintaining approved coastal zone management and/or restoration projects. Utilization of any and all rights derived under this lease by the mineral lessee, its agents, successors or assigns, shall not interfere with nor hinder the reasonable surface use by the Department of Natural Resources, its Offices or Commissions, as herein above reserved.

Applicant: AMEX RESOURCES, INC.

Bidder	Cash Payment	Price/Acre	Rental	Oil	Gas	Other

Legend
06090034
06090034water
DOQQ2004



VERMILION RIVER

COULEE KENNY

P.O.B.

VERMILION PARISH

T12S - R3E

3,000 Feet



TRACT 38553 - Cameron Parish, Louisiana

All of the lands now or formerly constituting the beds and bottoms of all water bodies of every nature and description the title of which vests in the State of Louisiana, together with all islands arising therein and other lands formed by accretion or by reliction, where allowed by law, excepting tax adjudicated lands, and not presently under mineral lease and cross hatched on September 13, 2006, situated in Cameron Parish, Louisiana, and more particularly described as follows: Beginning at a point on the Western boundary of State Lease No. 17915 having Coordinates of X = 1,231,012.21 and Y = 485,511.52; thence West 2,151.36 feet along a North boundary of said State Lease No. 17915 to a Northwest corner having Coordinates of X = 1,228,860.85 and Y = 485,511.52; thence West 5,469.93 feet to a point on the East boundary of State Lease No. 18866 having Coordinates of X = 1,223,390.92 and Y = 485,511.52; thence along the boundary of said State Lease No. 18866 the following courses: Northeasterly, Northerly and Northwesterly to its Northern most corner having Coordinates of X = 1,222,955.74 and Y = 489,245.88; thence North 7,234.12 feet to a point having Coordinates of X = 1,222,955.74 and Y = 496,480.00; thence East 4,916.81 feet to the Southwest corner of State Lease No. 18133 having Coordinates of X = 1,227,872.55 and Y = 496,480.00; thence East 4,210.97 feet along the South boundary of said State Lease No. 18133 to the Northern most Northwest corner of said State Lease No. 17915 having Coordinates of X = 1,232,083.52 and Y = 496,480.00; thence along the boundary of said State Lease No. 17915 the following courses: South 10 degrees 05 minutes 20 seconds West 6,115.63 feet to a point having Coordinates of X = 1,231,012.21 and Y = 490,458.93 and South 4,947.41 feet to the point of beginning, **LESS AND EXCEPT** all that portion of State Lease No. 18866 that may lie within the boundaries of the above described tract, containing approximately **369 acres**, **LESS AND EXCEPT** that portion thereof, if any, located West of the boundary line between the States of Texas and Louisiana as determined by the report of the Special Master and adjudicated by the Supreme Court of the United States in litigation styled **Texas v. Louisiana, et al No. 36 Original**, or as otherwise approved by said court, all as more particularly outlined on a plat on file in the Office of Mineral Resources, Department of Natural Resources. All bearings, distances and coordinates are based on Louisiana Coordinate System of 1927, (North or South Zone), where applicable.

NOTE: The above description of the Tract nominated for lease has been provided and corrected, where required, exclusively by the nomination party. Any mineral lease selected from this Tract and awarded by the Louisiana State Mineral Board shall be without warranty of any kind, either express, implied, or statutory, including, but not limited to, the implied warranties of merchantability and fitness for a particular purpose. Should the mineral lease awarded by the Louisiana State Mineral Board be subsequently modified, cancelled or abrogated due to the existence of conflicting leases, operating agreements, private claims or other future obligations or conditions which may affect all or any portion of the leased Tract, it shall not relieve the Lessee of the obligation to

pay any bonus due thereon to the Louisiana State Mineral Board, nor shall the Louisiana State Mineral Board be obligated to refund any consideration paid by the Lessor prior to such modification, cancellation, or abrogation, including, but not limited to, bonuses, rentals and royalties.

NOTE: The State of Louisiana does hereby reserve, and this lease shall be subject to, the imprescriptible right of surface use in the nature of a servitude in favor of the Department of Natural Resources, including its Offices and Commissions, for the sole purpose of implementing, constructing, servicing and maintaining approved coastal zone management and/or restoration projects. Utilization of any and all rights derived under this lease by the mineral lessee, its agents, successors or assigns, shall not interfere with nor hinder the reasonable surface use by the Department of Natural Resources, its Offices or Commissions, as herein above reserved.

Applicant: CUMMINS ENERGY

Bidder	Cash Payment	Price/Acre	Rental	Oil	Gas	Other

Legend

- 06090011
- 06090011water
- Active_Leases
- Counties

DOQQ2004

