

TRACT 38541 - Portion of Block 6, West Cameron Area, Revised, Cameron Parish, Louisiana

The beds and bottoms of all water bodies belonging to the State of Louisiana located in Block 6, West Cameron Area, Revised, together with any present lands formed by accretion to the shoreline or islands formed therein, located in Cameron Parish, Louisiana, owned by and not presently under mineral lease as of September 13, 2006, from the State of Louisiana, the geographical area of which is more fully described as follows: Beginning at a point on the Louisiana Coastline, also being the Northern most Northwest corner of State Lease No. 18359 having Coordinates of X = 1,357,383.96 and Y = 403,283.76; thence along the boundary of said State Lease No. 18359 the following courses and distances: South 25 degrees 22 minutes 32 seconds West 1,698.88 feet and South 49 degrees 08 minutes 06 seconds East 2,511.89 feet to the Northern most corner of State Lease No. 18545 having Coordinates of X = 1,358,555.53 and Y = 400,105.31; thence along the boundary of said State Lease No. 18545 the following courses and distances: South 30 degrees 22 minutes 27 seconds West 3,438.24 feet; South 01 degrees 46 minutes 53 seconds West 2,123.03 feet and South 87 degrees 11 minutes 48 seconds East 420.50 feet to a point on the West boundary of State Lease No. 18526 having Coordinates of X = 1,357,171.00 and Y = 394,996.43; thence South 1,206.19 feet along the West boundary of said State Lease No. 18526 to its Southwest corner, also being a point on the South line of Block 6, West Cameron Area, Revised, having Coordinates of X = 1,357,171.00 and Y = 393,790.24; thence West 488.14 feet along the South line of said Block 6 to the Southeast corner of State Lease No. 18546 having Coordinates of X = 1,356,682.86 and Y = 393,790.24; thence along the boundary of said State Lease No. 18546 the following courses and distances: North 21 degrees 18 minutes 20 seconds West 2,429.83 feet; North 78 degrees 25 minutes 56 seconds West 3,025.41 feet; South 22 degrees 24 minutes 12 seconds West 527.49 feet; North 70 degrees 08 minutes 15 seconds West 3,249.30 feet; North 21 degrees 25 minutes 46 seconds East 50.06 feet and North 78 degrees 25 minutes 56 seconds West 2,469.89 feet to its Northwest corner, also being a point on the West line of said Block 6 having Coordinates X = 1,347,177.57 and Y = 397,818.88; thence North 7,381.65 feet along the West line of said Block 6 to its Northwest corner, also being a point on said Coastline having Coordinates of X = 1,347,177.57 and Y = 405,200.53; thence along said Coastline the following courses: Southeasterly along a straight line to a point having Coordinates of X = 1,351,162 and Y = 404,620; Southeasterly along a straight line to a point having Coordinates of X = 1,354,310 and Y = 403,875 and Southeasterly along a straight line to the point of beginning, containing approximately **1,820.30 acres**, all as more particularly outlined on a plat on file in the Office of Mineral Resources, Department of Natural Resources. All bearings, distances and coordinates are based on Louisiana Coordinate System of 1927, (North or South Zone).

NOTE: The above description of the Tract nominated for lease has been provided and corrected, where required, exclusively by the nomination party. Any mineral lease selected from this Tract and awarded by the

Louisiana State Mineral Board shall be without warranty of any kind, either express, implied, or statutory, including, but not limited to, the implied warranties of merchantability and fitness for a particular purpose. Should the mineral lease awarded by the Louisiana State Mineral Board be subsequently modified, cancelled or abrogated due to the existence of conflicting leases, operating agreements, private claims or other future obligations or conditions which may affect all or any portion of the leased Tract, it shall not relieve the Lessee of the obligation to pay any bonus due thereon to the Louisiana State Mineral Board, nor shall the Louisiana State Mineral Board be obligated to refund any consideration paid by the Lessor prior to such modification, cancellation, or abrogation, including, but not limited to, bonuses, rentals and royalties.

NOTE: The State of Louisiana does hereby reserve, and this lease shall be subject to, the imprescriptible right of surface use in the nature of a servitude in favor of the Department of Natural Resources, including its Offices and Commissions, for the sole purpose of implementing, constructing, servicing and maintaining approved coastal zone management and/or restoration projects. Utilization of any and all rights derived under this lease by the mineral lessee, its agents, successors or assigns, shall not interfere with nor hinder the reasonable surface use by the Department of Natural Resources, its Offices or Commissions, as herein above reserved.

NOTE: It appears, according to our records, that a portion of this Tract is located within the restrictive safety fairway area as set out by the Corps of Engineers, U.S. Army and/or the restrictive anchorage area as set out by the U.S. Coast Guard.

Applicant: CLAIRE RESOURCES

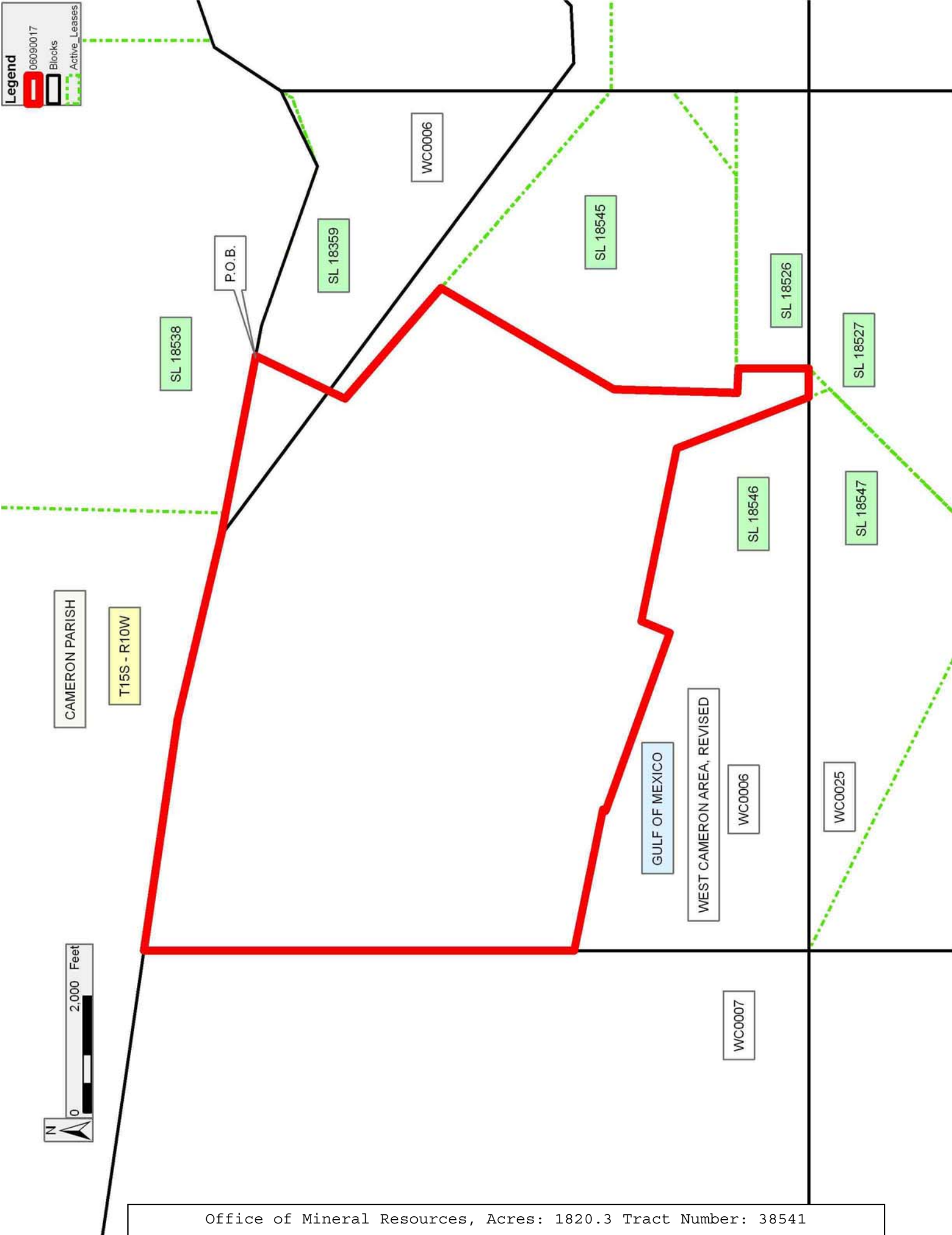
Bidder	Cash Payment	Price/ Acre	Rental	Oil	Gas	Other

Legend

06090017

Blocks

Active Leases



TRACT 38542 - Portion of Block 1, West Cameron Area, Revised, Cameron Parish, Louisiana

The beds and bottoms of all water bodies belonging to the State of Louisiana located in Block 1, West Cameron Area, Revised, together with any present lands formed by accretion to the shoreline or islands formed therein, located in Cameron Parish, Louisiana, owned by and not presently under mineral lease as of September 13, 2006, from the State of Louisiana, the geographical area of which is more fully described as follows: Beginning at a point within Block 1, West Cameron Area, Revised, having Coordinates of X = 1,431,610.00 and Y = 394,925.00; thence North 5,802.59 feet to a point on the Court Mandated Coastline, having Coordinates of X = 1,431,610.00 and Y = 400,727.59; thence Southeasterly on a straight line to a point having Coordinates of X = 1,436,899 and Y = 399,820; thence Southeasterly on a straight line to the Northwest corner of State Lease No. 12725, as amended, having Coordinates of X = 1,437,790.10 and Y = 399,495.51; thence along the West boundary of said State Lease No. 12725 the following courses: South 11 degrees 18 minutes 36 seconds West 102.50 feet, South 01 degrees 54 minutes 33 seconds East 300.17 feet and South 14 degrees 02 minutes 10 seconds East 175.22 feet to a point on the North boundary of State Lease No. 18949, having Coordinates of X = 1,437,822.50 and Y = 398,925.00; thence West 2,096.64 feet along the North boundary of said State Lease No. 18949 to its Northwest corner having Coordinates of X = 1,435,725.86 and Y = 398,925.00; thence South 4,000.00 feet along the West boundary of said State Lease No. 18949 to a point having Coordinates of X = 1,435,725.86 and Y = 394,925.00; thence West 4,115.86 feet to the point of beginning, containing approximately **556.62 acres**, all as more particularly outlined on a plat on file in the Office of Mineral Resources, Department of Natural Resources. All bearings, distances and coordinates are based on Louisiana Coordinate System of 1927, (North or South Zone).

NOTE: The above description of the Tract nominated for lease has been provided and corrected, where required, exclusively by the nomination party. Any mineral lease selected from this Tract and awarded by the Louisiana State Mineral Board shall be without warranty of any kind, either express, implied, or statutory, including, but not limited to, the implied warranties of merchantability and fitness for a particular purpose. Should the mineral lease awarded by the Louisiana State Mineral Board be subsequently modified, cancelled or abrogated due to the existence of conflicting leases, operating agreements, private claims or other future obligations or conditions which may affect all or any portion of the leased Tract, it shall not relieve the Lessee of the obligation to pay any bonus due thereon to the Louisiana State Mineral Board, nor shall the Louisiana State Mineral Board be obligated to refund any consideration paid by the Lessor prior to such modification, cancellation, or abrogation, including, but not limited to, bonuses, rentals and royalties.

NOTE: The State of Louisiana does hereby reserve, and this lease shall be subject to, the imprescriptible right of surface use in the nature of a

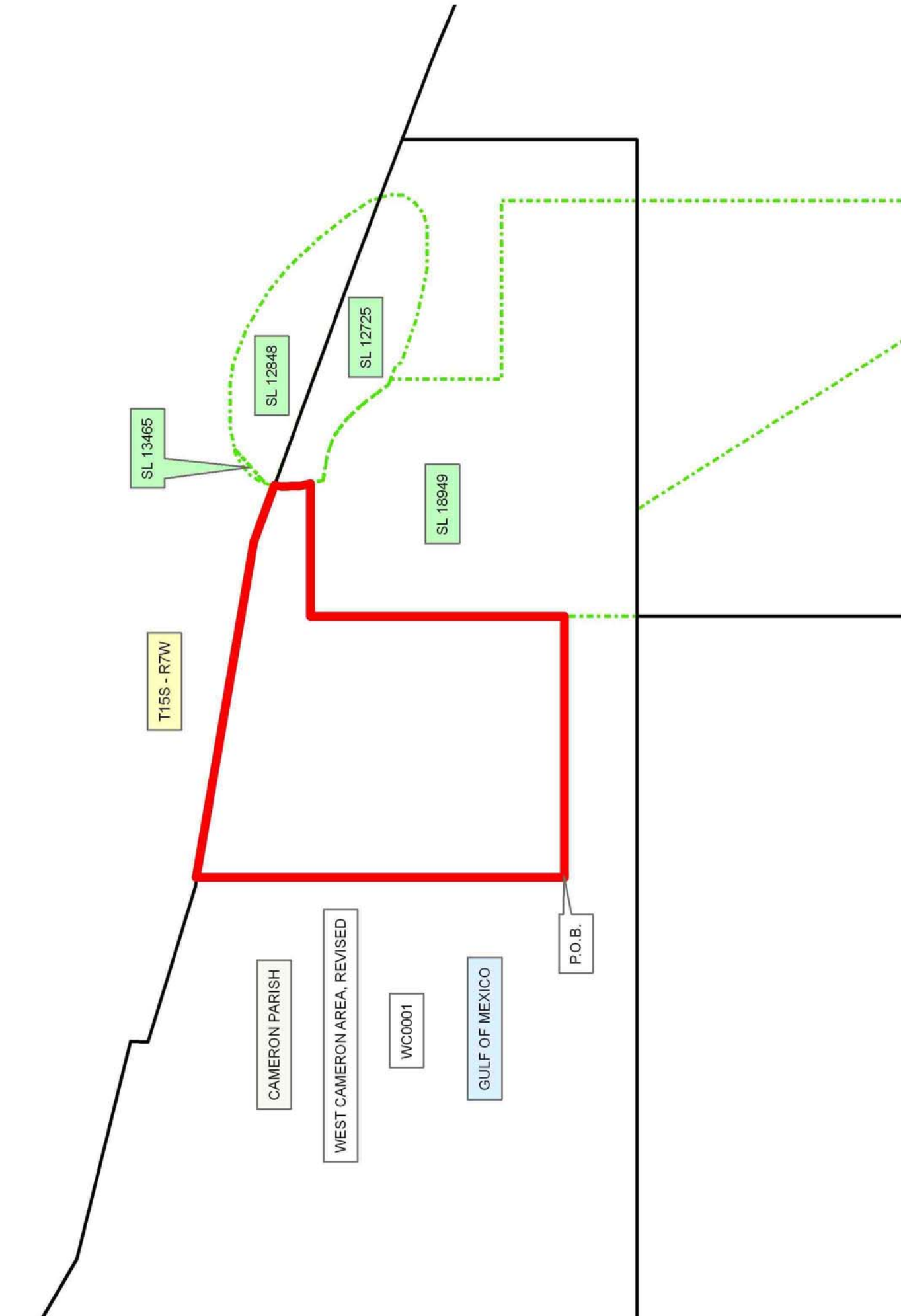
servitude in favor of the Department of Natural Resources, including its Offices and Commissions, for the sole purpose of implementing, constructing, servicing and maintaining approved coastal zone management and/or restoration projects. Utilization of any and all rights derived under this lease by the mineral lessee, its agents, successors or assigns, shall not interfere with nor hinder the reasonable surface use by the Department of Natural Resources, its Offices or Commissions, as herein above reserved.

Applicant: LOUISIANA MINERALS MANAGEMENT

Bidder	Cash Payment	Price/ Acre	Rental	Oil	Gas	Other

Legend

- 06090050
- Blocks
- Active_Leases



TRACT 38543 - Portion of Block 8, South Timbalier Area, Revised, Terrebonne Parish, Louisiana

The beds and bottoms of all water bodies belonging to the State of Louisiana located in Block 8, South Timbalier Area, Revised, together with any present lands formed by accretion to the shoreline or islands formed therein, located in Terrebonne Parish, Louisiana, owned by and not presently under mineral lease as of September 13, 2006, from the State of Louisiana, the geographical area of which is more fully described as follows: Beginning at the Northwestern corner of Block 8, South Timbalier Area, Revised, also being a point on the Coastline as per the Supreme Court Decree dated June 16, 1975, having Coordinates of X = 2,202,046.02 and Y = 139,683.33; thence along said Coastline the following courses: Northeasterly on a straight line to a point having Coordinates of X = 2,207,126.00 and Y = 141,266.00 and Northeasterly on a straight line to a point having Coordinates of X = 2,211,181.00 and Y = 142,353.44; thence South 6,326.44 feet to a point having Coordinates of X = 2,211,181.00 and Y = 136,027.00; thence West 9,134.98 feet to a point on the Western boundary line of Block 8, having Coordinates of X = 2,202,046.02 and Y = 136,027.00; thence North 3,656.33 feet along said Block 8 to the point of beginning, containing approximately **1,057.00 acres**, all as more particularly outlined on a plat on file in the Office of Mineral Resources, Department of Natural Resources. All bearings, distances and coordinates are based on Louisiana Coordinate System of 1927, (North or South Zone).

NOTE: The above description of the Tract nominated for lease has been provided and corrected, where required, exclusively by the nomination party. Any mineral lease selected from this Tract and awarded by the Louisiana State Mineral Board shall be without warranty of any kind, either express, implied, or statutory, including, but not limited to, the implied warranties of merchantability and fitness for a particular purpose. Should the mineral lease awarded by the Louisiana State Mineral Board be subsequently modified, cancelled or abrogated due to the existence of conflicting leases, operating agreements, private claims or other future obligations or conditions which may affect all or any portion of the leased Tract, it shall not relieve the Lessee of the obligation to pay any bonus due thereon to the Louisiana State Mineral Board, nor shall the Louisiana State Mineral Board be obligated to refund any consideration paid by the Lessor prior to such modification, cancellation, or abrogation, including, but not limited to, bonuses, rentals and royalties.

NOTE: The State of Louisiana does hereby reserve, and this lease shall be subject to, the imprescriptible right of surface use in the nature of a servitude in favor of the Department of Natural Resources, including its Offices and Commissions, for the sole purpose of implementing, constructing, servicing and maintaining approved coastal zone management and/or restoration projects. Utilization of any and all rights derived under this lease by the mineral lessee, its agents, successors or assigns, shall not interfere with nor hinder the reasonable surface use by the

Department of Natural Resources, its Offices or Commissions, as herein above reserved.

NOTE: The Department of Wildlife and Fisheries has designated certain areas in the coastal waters of the State of Louisiana as Oyster Seed Bed Areas. The exact location of those Seed Bed Areas must be obtained from the Department of Wildlife and Fisheries and any work done under a mineral lease from the State of Louisiana may necessarily be conducted in conformity with the rules and regulations promulgated by the said Department of Wildlife and Fisheries for Oyster Seed Bed Areas.

Applicant: BURLINGTON RESOURCES OIL & GAS COMPANY LP

Bidder	Cash Payment	Price/ Acre	Rental	Oil	Gas	Other

Legend

06090045

Blocks

Tracts

