

TRACT 37773 - Bienville Parish, Louisiana

All of the lands now or formerly constituting the beds and bottoms of all water bodies of every nature and description the title of which vests in the State of Louisiana, together with all islands arising therein and other lands formed by accretion or by reliction, where allowed by law, excepting tax adjudicated lands, and not presently under mineral lease on September 14, 2005, situated in Bienville Parish, Louisiana, and more particularly described as follows: Beginning at the Southeast corner of State Lease No. 18502 having Coordinates of X = 1,730,700.00 and Y = 619,200.00; thence South 5,200.00 feet to a point having Coordinates of X = 1,730,700.00 and Y = 614,000.00; thence West 6,500.00 feet to a point having Coordinates of X = 1,724,200.00 and Y = 614,000.00; thence North 5,200.00 feet to a point having Coordinates of X = 1,724,200.00 and Y = 619,200.00; thence East 900.00 feet to the Southwest corner of said State Lease No. 18502 having Coordinates of X = 1,725,100.00 and Y = 619,200.00; thence East 5,600.00 feet along the South line of said State Lease No. 18502 to the point of beginning, including all lands lying below the elevation of 148.6 feet as established in a boundary agreement dated April 16, 1955, **LESS AND EXCEPT** that portion of the nomination from the surface to 5530 feet located within the geographical boundary of the Underground Storage Lease No. 470, being the Bistineau Gas Storage Pool in the Sligo formation also known as the Pettit Formation, containing approximately **148 acres**, all as more particularly outlined on a plat on file in the Office of Mineral Resources, Department of Natural Resources. All bearings, distances and coordinates are based on Louisiana Coordinate System of 1927, (North or South Zone), where applicable.

NOTE: The above description of the Tract nominated for lease has been provided and corrected, where required, exclusively by the nomination party. Any mineral lease selected from this Tract and awarded by the Louisiana State Mineral Board shall be without warranty of any kind, either express, implied, or statutory, including, but not limited to, the implied warranties of merchantability and fitness for a particular purpose. Should the mineral lease awarded by the Louisiana State Mineral Board be subsequently modified, cancelled or abrogated due to the existence of conflicting leases, operating agreements, private claims or other future obligations or conditions which may affect all or any portion of the leased Tract, it shall not relieve the Lessee of the obligation to pay any bonus due thereon to the Louisiana State Mineral Board, nor shall the Louisiana State Mineral Board be obligated to refund any consideration paid by the Lessor prior to such modification, cancellation, or abrogation, including, but not limited to, bonuses, rentals and royalties.

NOTE: Note: This tract encompasses an area beneath which is located on the Bistineau Gas Storage Pool in the Sligo formation of the Pettit Porosity, Accordingly, any mineral related activity, including, but not limited to, the exploration and drilling for, and the production and storage of oil, gas and other liquid or gaseous minerals, conducted under a valid mineral lease which may be obtained from the State, shall be subject to any

statewide orders issued by the Louisiana Office of Conservation pertinent to conducting such operations in this area and upon this tract, including particular, but not limited to, the following: Order Nos. 287, 287-A, 287-A-1, 287-B, Supplement to 287-B, 287-B-1, 287-B-2 and 287-B-3. The successful bidder on this tract shall contact the operator of the Bistineau Gas Storage Pool and the Office of Conservation prior to initiating and conducting any of the aforementioned activity hereon.

Applicant: BISTINEAU PARTNERS

Bidder	Cash Payment	Price/Acre	Rental	Oil	Gas	Other



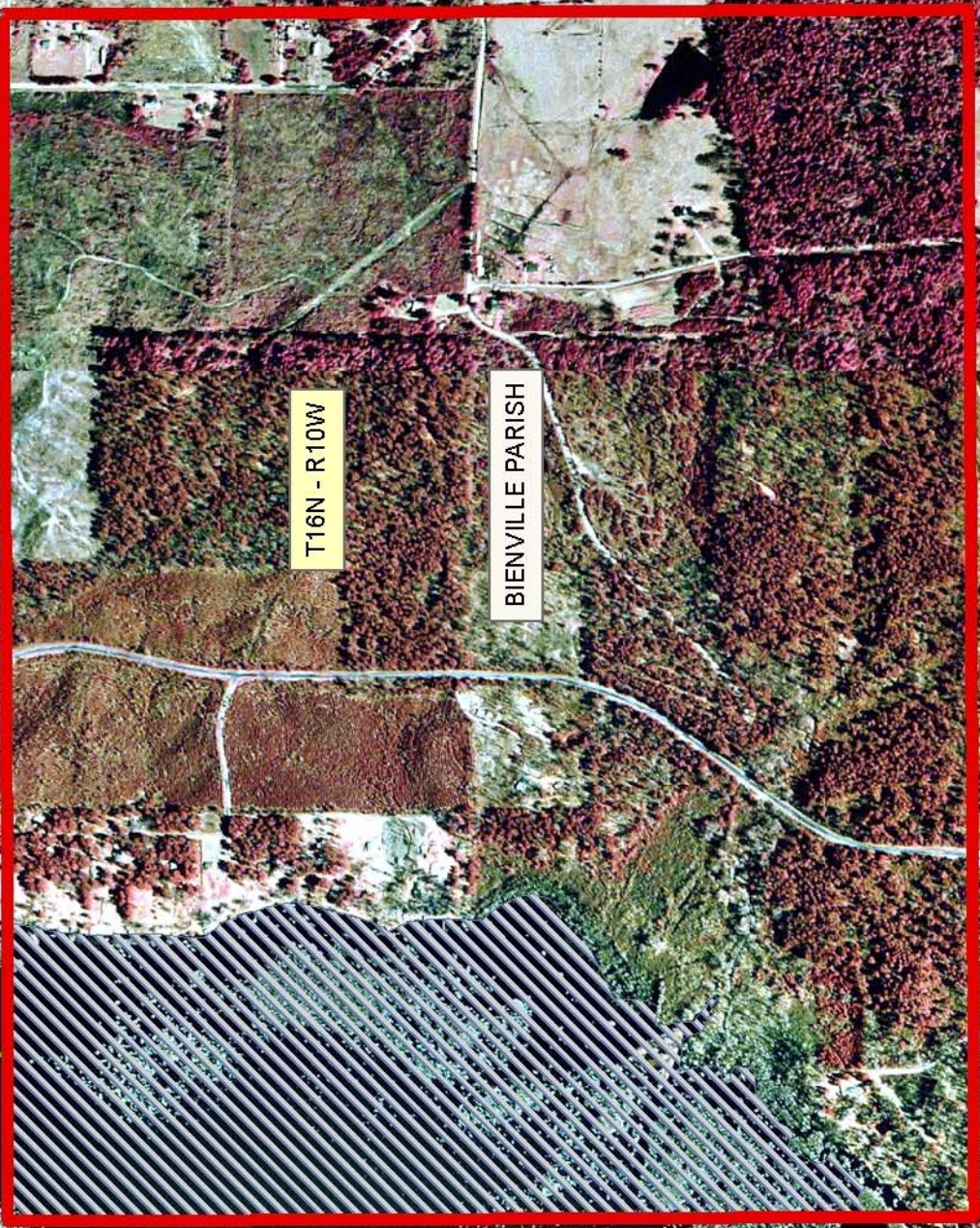
P.O.B.
X=1,730,700.00
Y=619,200.00

SL 18502

T16N - R10W

BIENVILLE PARISH

LAKE
BISTINEAU



TRACT 37774 - De Soto and Red River Parishes, Louisiana

All of the lands now or formerly constituting the beds and bottoms of all water bodies of every nature and description the title of which vests in the State of Louisiana, together with all islands arising therein and other lands formed by accretion or by reliction, where allowed by law, excepting tax adjudicated lands, and not presently under mineral lease on September 14, 2005, situated in De Soto and Red River Parishes, Louisiana, and more particularly described as follows: Beginning at the Southwest corner of State Lease No. 17216 having Coordinates of X = 1,656,600.00 and Y = 567,600.00; thence East 5,500.00 feet along the South line of said State Lease No. 17216 to its Southeast corner having Coordinates of X = 1,662,100.00 and Y = 567,600.00; thence South 4,700.00 feet to a point having Coordinates of X = 1,662,100.00 and Y = 562,900.00; thence West 5,500.00 feet to a point having Coordinates of X = 1,656,600.00 and Y = 562,900.00; thence North 4,700.00 feet to the point of beginning, **LESS AND EXCEPT** any portion of the Bayou Pierre Wildlife Management Area that may lie within the above described tract, containing approximately **12.00 acres**, all as more particularly outlined on a plat on file in the Office of Mineral Resources, Department of Natural Resources. All bearings, distances and coordinates are based on Louisiana Coordinate System of 1927, (North or South Zone), where applicable.

NOTE: The above description of the Tract nominated for lease has been provided and corrected, where required, exclusively by the nomination party. Any mineral lease selected from this Tract and awarded by the Louisiana State Mineral Board shall be without warranty of any kind, either express, implied, or statutory, including, but not limited to, the implied warranties of merchantability and fitness for a particular purpose. Should the mineral lease awarded by the Louisiana State Mineral Board be subsequently modified, cancelled or abrogated due to the existence of conflicting leases, operating agreements, private claims or other future obligations or conditions which may affect all or any portion of the leased Tract, it shall not relieve the Lessee of the obligation to pay any bonus due thereon to the Louisiana State Mineral Board, nor shall the Louisiana State Mineral Board be obligated to refund any consideration paid by the Lessor prior to such modification, cancellation, or abrogation, including, but not limited to, bonuses, rentals and royalties.

Bidder	Cash Payment	Price/Acre	Rental	Oil	Gas	Other

Applicant: CYRPRESS ENERGY CORPORATION



SL 18605

RED RIVER PARISH



SL 17216

T14N - R12W

P.O.B.
X=1,656,600.00
Y=567,600.00

SL 9312

DE SOTO PARISH

TRACT 37775 - Portion of Block 17, Chandeleur Sound Addition Area, Revised, St. Bernard Parish, Louisiana

All of the lands now or formerly constituting the beds and bottoms of all water bodies of every nature and description the title of which vests in the State of Louisiana, together with all islands arising therein and other lands formed by accretion or by reliction, where allowed by law, excepting tax adjudicated lands, and not presently under mineral lease on September 14, 2005, situated in St. Bernard Parish, Louisiana, and more particularly described as follows: Beginning at the Southeast corner of Block 17, Chandeleur Sound Area Addition, Revised having Coordinates of X = 2,709,100.00 and Y = 514,080.00; thence West 14,750.00 feet along the South line of said Block 17 to its Southwest corner having Coordinates of X = 2,694,350.00 and Y = 514,080.00; thence North 7,375.00 feet along the West line of said Block 17 to a point having Coordinates of X = 2,694,350.00 and Y = 521,455.00; thence East 14,750.00 feet to a point on the East line of said Block 17 having Coordinates of X = 2,709,100.00 and Y = 521,455.00; thence South 7,375.00 feet along the East line of said Block 17 to the point of beginning, containing approximately **2,497.27 acres**, all as more particularly outlined on a plat on file in the Office of Mineral Resources, Department of Natural Resources. All bearings, distances and coordinates are based on Louisiana Coordinate System of 1927, (North or South Zone), where applicable.

NOTE: The above description of the Tract nominated for lease has been provided and corrected, where required, exclusively by the nomination party. Any mineral lease selected from this Tract and awarded by the Louisiana State Mineral Board shall be without warranty of any kind, either express, implied, or statutory, including, but not limited to, the implied warranties of merchantability and fitness for a particular purpose. Should the mineral lease awarded by the Louisiana State Mineral Board be subsequently modified, cancelled or abrogated due to the existence of conflicting leases, operating agreements, private claims or other future obligations or conditions which may affect all or any portion of the leased Tract, it shall not relieve the Lessee of the obligation to pay any bonus due thereon to the Louisiana State Mineral Board, nor shall the Louisiana State Mineral Board be obligated to refund any consideration paid by the Lessor prior to such modification, cancellation, or abrogation, including, but not limited to, bonuses, rentals and royalties.

NOTE: The Office of Mineral Resources will require a minimum bonus of \$130 per acre and a minimum royalty of 21%.

NOTE: The State of Louisiana does hereby reserve, and this lease shall be subject to, the imprescriptible right of surface use in the nature of a servitude in favor of the Department of Natural Resources, including its Offices and Commissions, for the sole purpose of implementing, constructing, servicing and maintaining approved coastal zone management and/or restoration projects. Utilization of any and all rights derived under this lease by the mineral lessee, its agents, successors or assigns,

shall not interfere with nor hinder the reasonable surface use by the Department of Natural Resources, its Offices or Commissions, as herein above reserved.

Applicant: RUSTY SHACKLEFORD

Bidder	Cash Payment	Price/Acre	Rental	Oil	Gas	Other



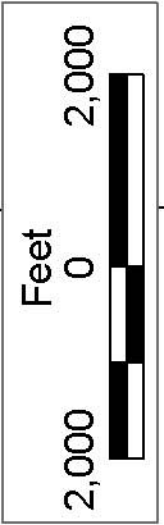
ST BERNARD PARISH

BLOCK CX0017

CHANDELEUR SOUND AREA ADDITION, REVISED

BLOCK CX0028

P.O.B.
X=2,709,100.00
Y=5,14,080.00



TRACT 37776 - Portion of Block 16, Chandeleur Sound Addition Area, Revised, St. Bernard Parish, Louisiana

All of the lands now or formerly constituting the beds and bottoms of all water bodies of every nature and description the title of which vests in the State of Louisiana, together with all islands arising therein and other lands formed by accretion or by reliction, where allowed by law, excepting tax adjudicated lands, and not presently under mineral lease on September 14, 2005, situated in St. Bernard Parish, Louisiana, and more particularly described as follows: Beginning at the Southeast corner of Block 16, Chandeleur Sound Area Addition, Revised having Coordinates of X = 2,723,850.00 and Y = 514,080.00; thence West 14,750.00 feet along the South line of said Block 16 to its Southwest corner having Coordinates of X = 2,709,100.00 and Y = 514,080.00; thence North 7,375.00 feet along the West line of said Block 16 to a point having Coordinates of X = 2,709,100.00 and Y = 521,455.00; thence East 14,750.00 feet to a point on the East line of said Block 16 having Coordinates of X = 2,723,850.00 and Y = 521,455.00; thence South 7,375.00 feet along the East line of said Block 16 to the point of beginning, containing approximately **2,497.27 acres**, all as more particularly outlined on a plat on file in the Office of Mineral Resources, Department of Natural Resources. All bearings, distances and coordinates are based on Louisiana Coordinate System of 1927, (North or South Zone), where applicable.

NOTE: The above description of the Tract nominated for lease has been provided and corrected, where required, exclusively by the nomination party. Any mineral lease selected from this Tract and awarded by the Louisiana State Mineral Board shall be without warranty of any kind, either express, implied, or statutory, including, but not limited to, the implied warranties of merchantability and fitness for a particular purpose. Should the mineral lease awarded by the Louisiana State Mineral Board be subsequently modified, cancelled or abrogated due to the existence of conflicting leases, operating agreements, private claims or other future obligations or conditions which may affect all or any portion of the leased Tract, it shall not relieve the Lessee of the obligation to pay any bonus due thereon to the Louisiana State Mineral Board, nor shall the Louisiana State Mineral Board be obligated to refund any consideration paid by the Lessor prior to such modification, cancellation, or abrogation, including, but not limited to, bonuses, rentals and royalties.

NOTE: The Office of Mineral Resources will require a minimum bonus of \$130 per acre and a minimum royalty of 21%.

NOTE: The State of Louisiana does hereby reserve, and this lease shall be subject to, the imprescriptible right of surface use in the nature of a servitude in favor of the Department of Natural Resources, including its Offices and Commissions, for the sole purpose of implementing, constructing, servicing and maintaining approved coastal zone management and/or restoration projects. Utilization of any and all rights derived under this lease by the mineral lessee, its agents, successors or assigns,

shall not interfere with nor hinder the reasonable surface use by the Department of Natural Resources, its Offices or Commissions, as herein above reserved.

Applicant: RUSTY SHACKLEFORD

Bidder	Cash Payment	Price/Acre	Rental	Oil	Gas	Other



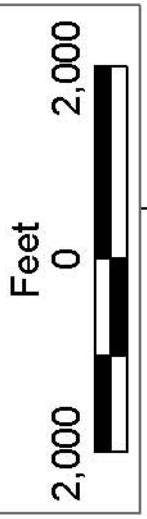
ST BERNARD PARISH

BLOCK CX0016

CHANDELEUR SOUND AREA ADDITION, REVISED

BLOCK CX0029

P.O.B.
X=2,723,850.00
Y=514,080.00



TRACT 37777 - Portion of Block 28, Chandeleur Sound Addition Area, Revised, St. Bernard Parish, Louisiana

All of the lands now or formerly constituting the beds and bottoms of all water bodies of every nature and description the title of which vests in the State of Louisiana, together with all islands arising therein and other lands formed by accretion or by reliction, where allowed by law, excepting tax adjudicated lands, and not presently under mineral lease on September 14, 2005, situated in St. Bernard Parish, Louisiana, and more particularly described as follows: Beginning at the Northeast corner of Block 28, Chandeleur Sound Area Addition, Revised having Coordinates of X = 2,709,100.00 and Y = 514,080.00; thence South 7,080.00 feet along the East line of said Block 28 to a point having Coordinates of X = 2,709,100.00 and Y = 507,000.00; thence West 14,750.00 feet to a point on the West line of said Block 28 having Coordinates of X = 2,694,350.00 and Y = 507,000.00; thence North 7,080.00 feet along the West line of said Block 28 to its Northwest corner having Coordinates of X = 2,694,350.00 and Y = 514,080.00; thence East 14,750.00 feet along the North line of said Block 28 to the point of beginning, containing approximately **2,397.38 acres**, all as more particularly outlined on a plat on file in the Office of Mineral Resources, Department of Natural Resources. All bearings, distances and coordinates are based on Louisiana Coordinate System of 1927, (North or South Zone), where applicable.

NOTE: The above description of the Tract nominated for lease has been provided and corrected, where required, exclusively by the nomination party. Any mineral lease selected from this Tract and awarded by the Louisiana State Mineral Board shall be without warranty of any kind, either express, implied, or statutory, including, but not limited to, the implied warranties of merchantability and fitness for a particular purpose. Should the mineral lease awarded by the Louisiana State Mineral Board be subsequently modified, cancelled or abrogated due to the existence of conflicting leases, operating agreements, private claims or other future obligations or conditions which may affect all or any portion of the leased Tract, it shall not relieve the Lessee of the obligation to pay any bonus due thereon to the Louisiana State Mineral Board, nor shall the Louisiana State Mineral Board be obligated to refund any consideration paid by the Lessor prior to such modification, cancellation, or abrogation, including, but not limited to, bonuses, rentals and royalties.

NOTE: The Office of Mineral Resources will require a minimum bonus of \$230 per acre and a minimum royalty of 23%.

NOTE: The State of Louisiana does hereby reserve, and this lease shall be subject to, the imprescriptible right of surface use in the nature of a servitude in favor of the Department of Natural Resources, including its Offices and Commissions, for the sole purpose of implementing, constructing, servicing and maintaining approved coastal zone management and/or restoration projects. Utilization of any and all rights derived under this lease by the mineral lessee, its agents, successors or assigns,

shall not interfere with nor hinder the reasonable surface use by the Department of Natural Resources, its Offices or Commissions, as herein above reserved.

Applicant: RUSTY SHACKLEFORD

Bidder	Cash Payment	Price/Acre	Rental	Oil	Gas	Other



P.O.B.
X=2,709,100.00
Y=5,14,080.00

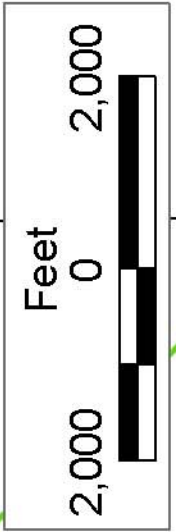
ST BERNARD PARISH

BLOCK CX0017

CHANDELEUR SOUND AREA ADDITION, REVISED

BLOCK CX0028

SL 17388



TRACT 37778 - Portion of Block 29, Chandeleur Sound Addition Area, Revised, St. Bernard Parish, Louisiana

All of the lands now or formerly constituting the beds and bottoms of all water bodies of every nature and description the title of which vests in the State of Louisiana, together with all islands arising therein and other lands formed by accretion or by reliction, where allowed by law, excepting tax adjudicated lands, and not presently under mineral lease on September 14, 2005, situated in St. Bernard Parish, Louisiana, and more particularly described as follows: Beginning at the Northeast corner of Block 29, Chandeleur Sound Area Addition, Revised having Coordinates of X = 2,723,850.00 and Y = 514,080.00; thence South 7,375.00 feet along the East line of said Block 29 to a point having Coordinates of X = 2,723,850.00 and Y = 506,705.00; thence West 14,750.00 feet to a point on the West line of said Block 29 having Coordinates of X = 2,709,100.00 and Y = 506,705.00; thence North 7,375.00 feet along the West line of said Block 29 to its Northwest corner having Coordinates of X = 2,709,100.00 and Y = 514,080.00; thence East 14,750.00 feet along the North line of said Block 29 to the point of beginning, containing approximately **2,497.27 acres**, all as more particularly outlined on a plat on file in the Office of Mineral Resources, Department of Natural Resources. All bearings, distances and coordinates are based on Louisiana Coordinate System of 1927, (North or South Zone), where applicable.

NOTE: The above description of the Tract nominated for lease has been provided and corrected, where required, exclusively by the nomination party. Any mineral lease selected from this Tract and awarded by the Louisiana State Mineral Board shall be without warranty of any kind, either express, implied, or statutory, including, but not limited to, the implied warranties of merchantability and fitness for a particular purpose. Should the mineral lease awarded by the Louisiana State Mineral Board be subsequently modified, cancelled or abrogated due to the existence of conflicting leases, operating agreements, private claims or other future obligations or conditions which may affect all or any portion of the leased Tract, it shall not relieve the Lessee of the obligation to pay any bonus due thereon to the Louisiana State Mineral Board, nor shall the Louisiana State Mineral Board be obligated to refund any consideration paid by the Lessor prior to such modification, cancellation, or abrogation, including, but not limited to, bonuses, rentals and royalties.

NOTE: The Office of Mineral Resources will require a minimum bonus of \$230 per acre and a minimum royalty of 23%.

NOTE: The State of Louisiana does hereby reserve, and this lease shall be subject to, the imprescriptible right of surface use in the nature of a servitude in favor of the Department of Natural Resources, including its Offices and Commissions, for the sole purpose of implementing, constructing, servicing and maintaining approved coastal zone management and/or restoration projects. Utilization of any and all rights derived under this lease by the mineral lessee, its agents, successors or assigns,

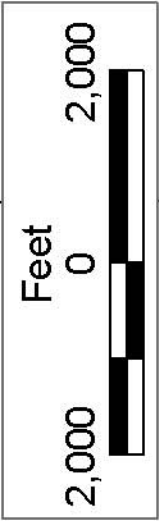
shall not interfere with nor hinder the reasonable surface use by the Department of Natural Resources, its Offices or Commissions, as herein above reserved.

Applicant: RUSTY SHACKLEFORD

Bidder	Cash Payment	Price/Acre	Rental	Oil	Gas	Other



P.O.B.
X=2,723,850.00
Y=514,080.00



ST BERNARD PARISH

BLOCK CX0016

BLOCK CX0029

CHANDELEUR SOUND AREA ADDITION, REVISED

SL 17388

TRACT 37779 - Portion of Block 28, Chandeleur Sound Addition Area, Revised, St. Bernard Parish, Louisiana

All of the lands now or formerly constituting the beds and bottoms of all water bodies of every nature and description the title of which vests in the State of Louisiana, together with all islands arising therein and other lands formed by accretion or by reliction, where allowed by law, excepting tax adjudicated lands, and not presently under mineral lease on September 14, 2005, situated in St. Bernard Parish, Louisiana, and more particularly described as follows: Beginning at the Southwest corner of Block 28, Chandeleur Sound Area Addition, Revised having Coordinates of X = 2,694,350.00 and Y = 499,330.00; thence North 7,670.00 feet along the West line of said Block 28 to a point having Coordinates of X = 2,694,350.00 and Y = 507,000.00; thence East 14,750.00 feet to a point on the East line of said Block 28 having Coordinates of X = 2,709,100.00 and Y = 507,000.00; thence South 5,455.00 feet along the East line of said Block 28 to a point on State Lease No. 17388 having Coordinates of X = 2,709,100.00 and Y = 501,545.00; thence along said State Lease No. 17388 the following courses: North 43 degrees 02 minutes 02 seconds West 7,059.31 feet, West 2,581.50 feet, South 3,835.00 feet and South 49 degrees 21 minutes 40 seconds East 5,435.36 feet to the Southwest corner of said State Lease No. 17388 and a point on the South line of said Block 28 having Coordinates of X = 2,705,825.50 and Y = 499,330.00; thence West 11,475.50 feet along the South line of said Block 28 to the point of beginning, containing approximately **1,797.39 acres**, all as more particularly outlined on a plat on file in the Office of Mineral Resources, Department of Natural Resources. All bearings, distances and coordinates are based on Louisiana Coordinate System of 1927, (North or South Zone), where applicable.

NOTE: The above description of the Tract nominated for lease has been provided and corrected, where required, exclusively by the nomination party. Any mineral lease selected from this Tract and awarded by the Louisiana State Mineral Board shall be without warranty of any kind, either express, implied, or statutory, including, but not limited to, the implied warranties of merchantability and fitness for a particular purpose. Should the mineral lease awarded by the Louisiana State Mineral Board be subsequently modified, cancelled or abrogated due to the existence of conflicting leases, operating agreements, private claims or other future obligations or conditions which may affect all or any portion of the leased Tract, it shall not relieve the Lessee of the obligation to pay any bonus due thereon to the Louisiana State Mineral Board, nor shall the Louisiana State Mineral Board be obligated to refund any consideration paid by the Lessor prior to such modification, cancellation, or abrogation, including, but not limited to, bonuses, rentals and royalties.

NOTE: The Office of Mineral Resources will require a minimum bonus of \$230 per acre and a minimum royalty of 23%.

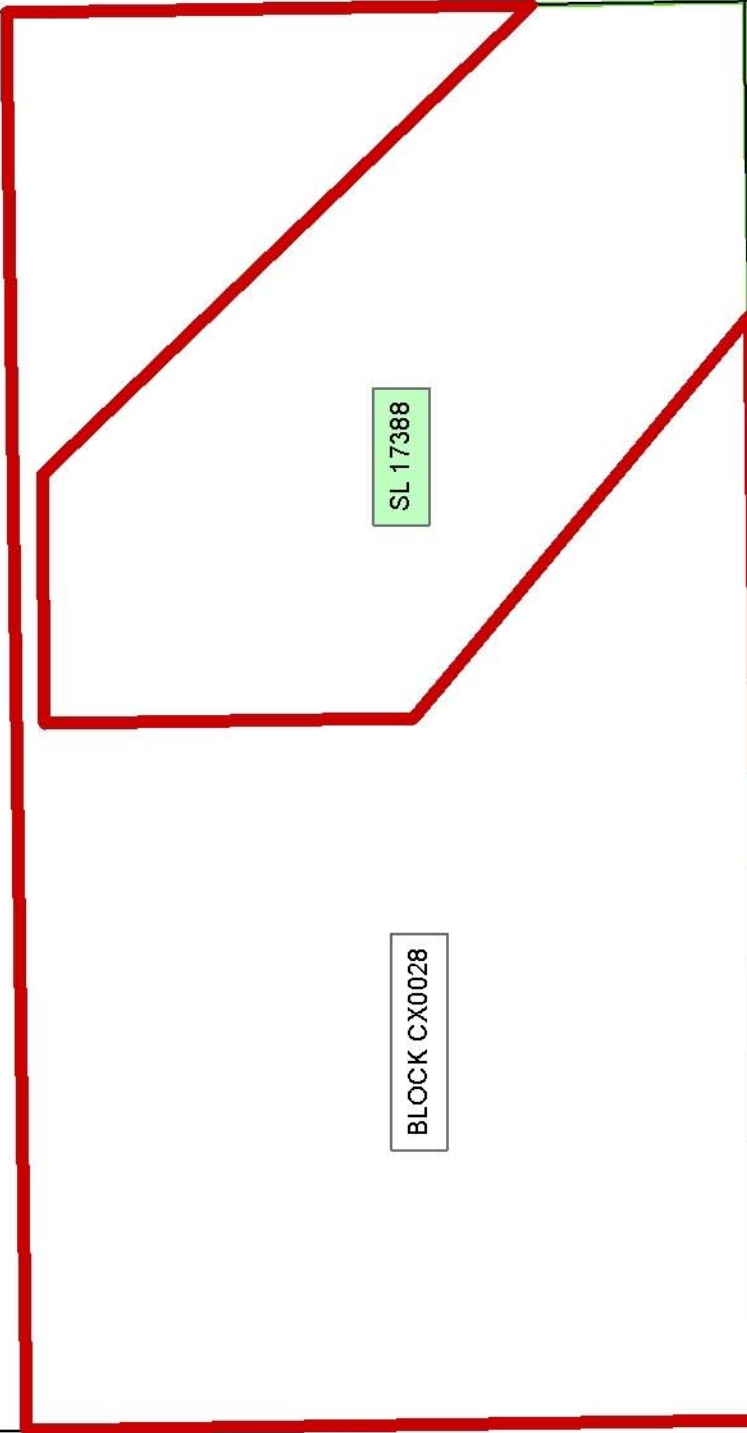
NOTE: The State of Louisiana does hereby reserve, and this lease shall be subject to, the imprescriptible right of surface use in the nature of a servitude in favor of the Department of Natural Resources, including its Offices and Commissions, for the sole purpose of implementing, constructing, servicing and maintaining approved coastal zone management and/or restoration projects. Utilization of any and all rights derived under this lease by the mineral lessee, its agents, successors or assigns, shall not interfere with nor hinder the reasonable surface use by the Department of Natural Resources, its Offices or Commissions, as herein above reserved.

Applicant: RUSTY SHACKLEFORD

Bidder	Cash Payment	Price/Acre	Rental	Oil	Gas	Other



ST BERNARD PARISH



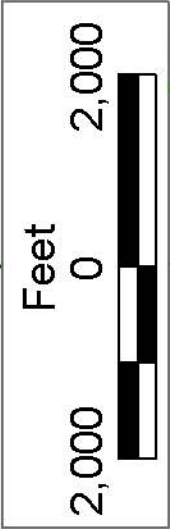
SL 17388

BLOCK CX0028

CHANDELEUR SOUND AREA
ADDITION, REVISED

BLOCK CX0041

P.O.B.
X=2,694,350.00
Y=499,330.00



TRACT 37780 - Portion of Block 29, Chandeleur Sound Addition Area, Revised, St. Bernard Parish, Louisiana

All of the lands now or formerly constituting the beds and bottoms of all water bodies of every nature and description the title of which vests in the State of Louisiana, together with all islands arising therein and other lands formed by accretion or by reliction, where allowed by law, excepting tax adjudicated lands, and not presently under mineral lease on September 14, 2005, situated in St. Bernard Parish, Louisiana, and more particularly described as follows: Beginning at the Southeast corner of Block 29, Chandeleur Sound Area Addition, Revised having Coordinates of X = 2,723,850.00 and Y = 499,330.00; thence West 14,750.00 feet along the South line of said Block 29 to its Southwest corner having Coordinates of X = 2,709,100.00 and Y = 499,330.00; thence North 7,375.00 feet along the West line of said Block 29 to a point having Coordinates of X = 2,709,100.00 and Y = 506,705.00; thence East 14,750.00 feet to a point on the East line of said Block 29 having Coordinates of X = 2,723,850.00 and Y = 506,705.00; thence South 7,375.00 feet along the East line of said Block 29 to the point of beginning, containing approximately **2,497.27 acres**, all as more particularly outlined on a plat on file in the Office of Mineral Resources, Department of Natural Resources. All bearings, distances and coordinates are based on Louisiana Coordinate System of 1927, (North or South Zone), where applicable.

NOTE: The above description of the Tract nominated for lease has been provided and corrected, where required, exclusively by the nomination party. Any mineral lease selected from this Tract and awarded by the Louisiana State Mineral Board shall be without warranty of any kind, either express, implied, or statutory, including, but not limited to, the implied warranties of merchantability and fitness for a particular purpose. Should the mineral lease awarded by the Louisiana State Mineral Board be subsequently modified, cancelled or abrogated due to the existence of conflicting leases, operating agreements, private claims or other future obligations or conditions which may affect all or any portion of the leased Tract, it shall not relieve the Lessee of the obligation to pay any bonus due thereon to the Louisiana State Mineral Board, nor shall the Louisiana State Mineral Board be obligated to refund any consideration paid by the Lessor prior to such modification, cancellation, or abrogation, including, but not limited to, bonuses, rentals and royalties.

NOTE: The Office of Mineral Resources will require a minimum bonus of \$230 per acre and a minimum royalty of 23%.

NOTE: The State of Louisiana does hereby reserve, and this lease shall be subject to, the imprescriptible right of surface use in the nature of a servitude in favor of the Department of Natural Resources, including its Offices and Commissions, for the sole purpose of implementing, constructing, servicing and maintaining approved coastal zone management and/or restoration projects. Utilization of any and all rights derived under this lease by the mineral lessee, its agents, successors or assigns,

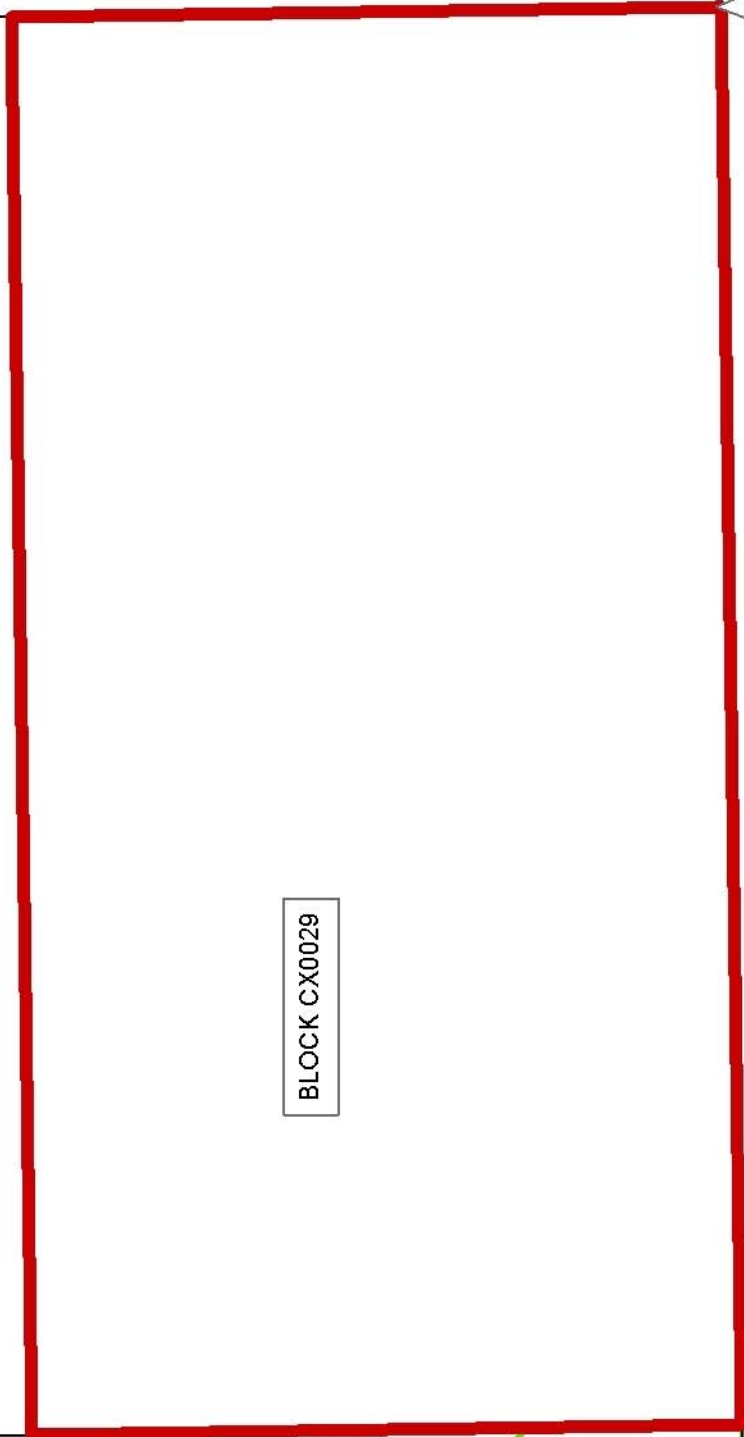
shall not interfere with nor hinder the reasonable surface use by the Department of Natural Resources, its Offices or Commissions, as herein above reserved.

Applicant: RUSTY SHACKLEFORD

Bidder	Cash Payment	Price/Acre	Rental	Oil	Gas	Other



CHANDELEUR SOUND AREA ADDITION, REVISED

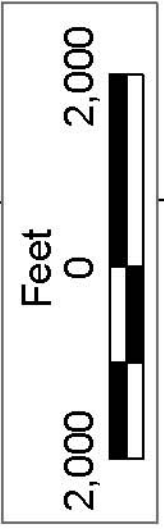


BLOCK CX0029

ST BERNARD PARISH

BLOCK CX0040

P.O.B.
X=2,723,850.00
Y=499,330.00



SL 17812

SL 17388

TRACT 37781 - Iberia Parish, Louisiana

All of the lands now or formerly constituting the beds and bottoms of all water bodies of every nature and description the title of which vests in the State of Louisiana, together with all islands arising therein and other lands formed by accretion or by reliction, where allowed by law, excepting tax adjudicated lands, and not presently under mineral lease on September 14, 2005, situated in Iberia Parish, Louisiana, and more particularly described as follows: Beginning at a point having Coordinates of X = 1,990,700.00 and Y = 486,500.00; thence West 10,000.00 feet to a point having Coordinates of X = 1,980,700.00 and Y = 486,500.00; thence North approximately 2,262 feet to the Southern boundary of State Lease No. 3273, as amended; thence along the boundary of said State Lease No. 3273 the following courses: Easterly approximately 666 feet to a point, Northerly approximately 6,674 feet to a point, Easterly approximately 2,833 feet to a point, Northerly approximately 2,628 feet to a point and Westerly approximately 3,088 feet to a point on the North line of said State Lease No. 3273 intersected by a line bearing South 01 degrees 25 minutes 08 seconds East from a point having Coordinates of X = 1,981,083.32 and Y = 499,500; thence North 01 degrees 25 minutes 08 seconds West approximately 1,426 feet to a point having Coordinates of X = 1,981,083.32 and Y = 499,500.00; thence East 9,616.68 feet to a point having Coordinates of X = 1,990,700.00 and Y = 499,500.00; thence South 13,000.00 feet to the point of beginning, **LESS AND EXCEPT** any portion of State Lease No. 5634, as amended, that may lie within the above described tract, containing approximately **40 acres**, all as more particularly outlined on a plat on file in the Office of Mineral Resources, Department of Natural Resources. All bearings, distances and coordinates are based on Louisiana Coordinate System of 1927, (North or South Zone), where applicable.

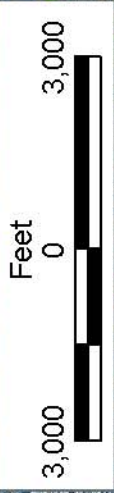
NOTE: The above description of the Tract nominated for lease has been provided and corrected, where required, exclusively by the nomination party. Any mineral lease selected from this Tract and awarded by the Louisiana State Mineral Board shall be without warranty of any kind, either express, implied, or statutory, including, but not limited to, the implied warranties of merchantability and fitness for a particular purpose. Should the mineral lease awarded by the Louisiana State Mineral Board be subsequently modified, cancelled or abrogated due to the existence of conflicting leases, operating agreements, private claims or other future obligations or conditions which may affect all or any portion of the leased Tract, it shall not relieve the Lessee of the obligation to pay any bonus due thereon to the Louisiana State Mineral Board, nor shall the Louisiana State Mineral Board be obligated to refund any consideration paid by the Lessor prior to such modification, cancellation, or abrogation, including, but not limited to, bonuses, rentals and royalties.

NOTE: The State of Louisiana does hereby reserve, and this lease shall be subject to, the imprescriptible right of surface use in the nature of a servitude in favor of the Department of Natural Resources, including its

Offices and Commissions, for the sole purpose of implementing, constructing, servicing and maintaining approved coastal zone management and/or restoration projects. Utilization of any and all rights derived under this lease by the mineral lessee, its agents, successors or assigns, shall not interfere with nor hinder the reasonable surface use by the Department of Natural Resources, its Offices or Commissions, as herein above reserved.

Applicant: HOMING PETROLEUM CO.

Bidder	Cash Payment	Price/Acre	Rental	Oil	Gas	Other



IBERIA PARISH

SL 5634

T12S - R11E

LAKE
RUNNELLA

BIG
BAYOU PIGEON

P.O.B.
X=1,990,700.00
Y=486,500.00

LITTLE
BAYOU PIGEON

TURKEY
BAYOU

SL 3273

T12S - R10E



TRACT 37782 - St. Bernard Parish, Louisiana

All of the lands now or formerly constituting the beds and bottoms of all water bodies of every nature and description the title of which vests in the State of Louisiana, together with all islands arising therein and other lands formed by accretion or by reliction, where allowed by law, excepting tax adjudicated lands, and not presently under mineral lease on September 14, 2005, situated in St. Bernard Parish, Louisiana, and more particularly described as follows: Beginning at a point having Coordinates of X = 2,604,623.53 and Y = 480,332.67; thence East 15,976.47 feet to a point having Coordinates of X = 2,620,600.00 and Y = 480,332.67; thence South 6,096.67 feet to a point having Coordinates of X = 2,620,600.00 and Y = 474,236.00; thence West 15,691.02 feet to a point on the East line of State Lease No. 17954 having Coordinates of X = 2,604,908.98 and Y = 474,236.00; thence along the boundary of said State Lease No. 17954 the following courses: North 04 degrees 52 minutes 36 seconds West 1,117.73 feet and North 02 degrees 24 minutes 46 seconds West 4,523.33 feet to its Northeast corner having Coordinates of X = 2,604,623.53 and Y = 479,869.00; thence North 463.67 feet to the point of beginning, containing approximately **1,803 acres**, all as more particularly outlined on a plat on file in the Office of Mineral Resources, Department of Natural Resources. All bearings, distances and coordinates are based on Louisiana Coordinate System of 1927, (North or South Zone), where applicable.

NOTE: The above description of the Tract nominated for lease has been provided and corrected, where required, exclusively by the nomination party. Any mineral lease selected from this Tract and awarded by the Louisiana State Mineral Board shall be without warranty of any kind, either express, implied, or statutory, including, but not limited to, the implied warranties of merchantability and fitness for a particular purpose. Should the mineral lease awarded by the Louisiana State Mineral Board be subsequently modified, cancelled or abrogated due to the existence of conflicting leases, operating agreements, private claims or other future obligations or conditions which may affect all or any portion of the leased Tract, it shall not relieve the Lessee of the obligation to pay any bonus due thereon to the Louisiana State Mineral Board, nor shall the Louisiana State Mineral Board be obligated to refund any consideration paid by the Lessor prior to such modification, cancellation, or abrogation, including, but not limited to, bonuses, rentals and royalties.

NOTE: The Office of Mineral Resources will require a minimum bonus of \$230 per acre and a minimum royalty of 23%.

NOTE: The State of Louisiana does hereby reserve, and this lease shall be subject to, the imprescriptible right of surface use in the nature of a servitude in favor of the Department of Natural Resources, including its Offices and Commissions, for the sole purpose of implementing, constructing, servicing and maintaining approved coastal zone management and/or restoration projects. Utilization of any and all rights derived under this lease by the mineral lessee, its agents, successors or assigns,

shall not interfere with nor hinder the reasonable surface use by the Department of Natural Resources, its Offices or Commissions, as herein above reserved.

NOTE: The Department of Wildlife and Fisheries has designated certain areas in the coastal waters of the State of Louisiana as Oyster Seed Bed Areas. The exact location of those Seed Bed Areas must be obtained from the Department of Wildlife and Fisheries and any work done under a mineral lease from the State of Louisiana may necessarily be conducted in conformity with the rules and regulations promulgated by the said Department of Wildlife and Fisheries for Oyster Seed Bed Areas.

Applicant: KARE-SUE ENERGY, INC.

Bidder	Cash Payment	Price/Acre	Rental	Oil	Gas	Other



CHANDELEUR SOUND AREA
ADDITION, REVISED

BLOCK CX0047

CHANDELEUR SOUND AREA

BLOCK CS0001



ST BERNARD PARISH

BAY BOUDREAU

TREASURE BAY

SL 18325

T13S - R18E

POB
X = 2,604,623.53
Y = 480,332.67

T12S - R18E

SL 17954