

TRACT 36670 - St. Mary Parish, Louisiana

All of the lands now or formerly constituting the beds and bottoms of all water bodies of every nature and description the title of which vests in the State of Louisiana, together with all islands arising therein and other lands formed by accretion or by reliction, where allowed by law, excepting tax adjudicated lands, and not presently under mineral lease on September 8, 2004, situated in St. Mary Parish, Louisiana, and more particularly described as follows: Beginning at a point having Coordinates of X = 1,930,660.22 and Y = 359,243.98; Thence East 18,480.00 feet to a point having Coordinates of X = 1,949,140.22 and Y = 359,243.98; Thence South 12,493.98 feet to a point having Coordinates of X = 1,949,140.22 and Y = 346,750.00; Thence West approximately 18,217 feet to an intersection point on the East boundary of State Lease No. 340, as amended, having a coordinate of Y = 346,750.00; Thence Northwesterly along the said East boundary of State Lease No. 340, as amended, to a point having a coordinate of X = 1,930,660.22; Thence North approximately 11,825 feet to the point of beginning, **LESS AND EXCEPT** any portion of State Lease No. 340, as amended, State Lease No. 368, as amended and Operating Agreement 043, which may lie within the above described tract, containing approximately **68 acres**, all as more particularly outlined on a plat on file in the Office of Mineral Resources, Department of Natural Resources. All bearings, distances and coordinates are based on Louisiana Coordinate System of 1927, (North or South Zone), where applicable.

NOTE: The above description of the Tract nominated for lease has been provided and corrected, where required, exclusively by the nomination party. Any mineral lease selected from this Tract and awarded by the Louisiana State Mineral Board shall be without warranty of any kind, either express, implied, or statutory, including, but not limited to, the implied warranties of merchantability and fitness for a particular purpose. Should the mineral lease awarded by the Louisiana State Mineral Board be subsequently modified, cancelled or abrogated due to the existence of conflicting leases, operating agreements, private claims or other future obligations or conditions which may affect all or any portion of the leased Tract, it shall not relieve the Lessee of the obligation to pay any bonus due thereon to the Louisiana State Mineral Board, nor shall the Louisiana State Mineral Board be obligated to refund any consideration paid by the Lessor prior to such modification, cancellation, or abrogation, including, but not limited to, bonuses, rentals and royalties.

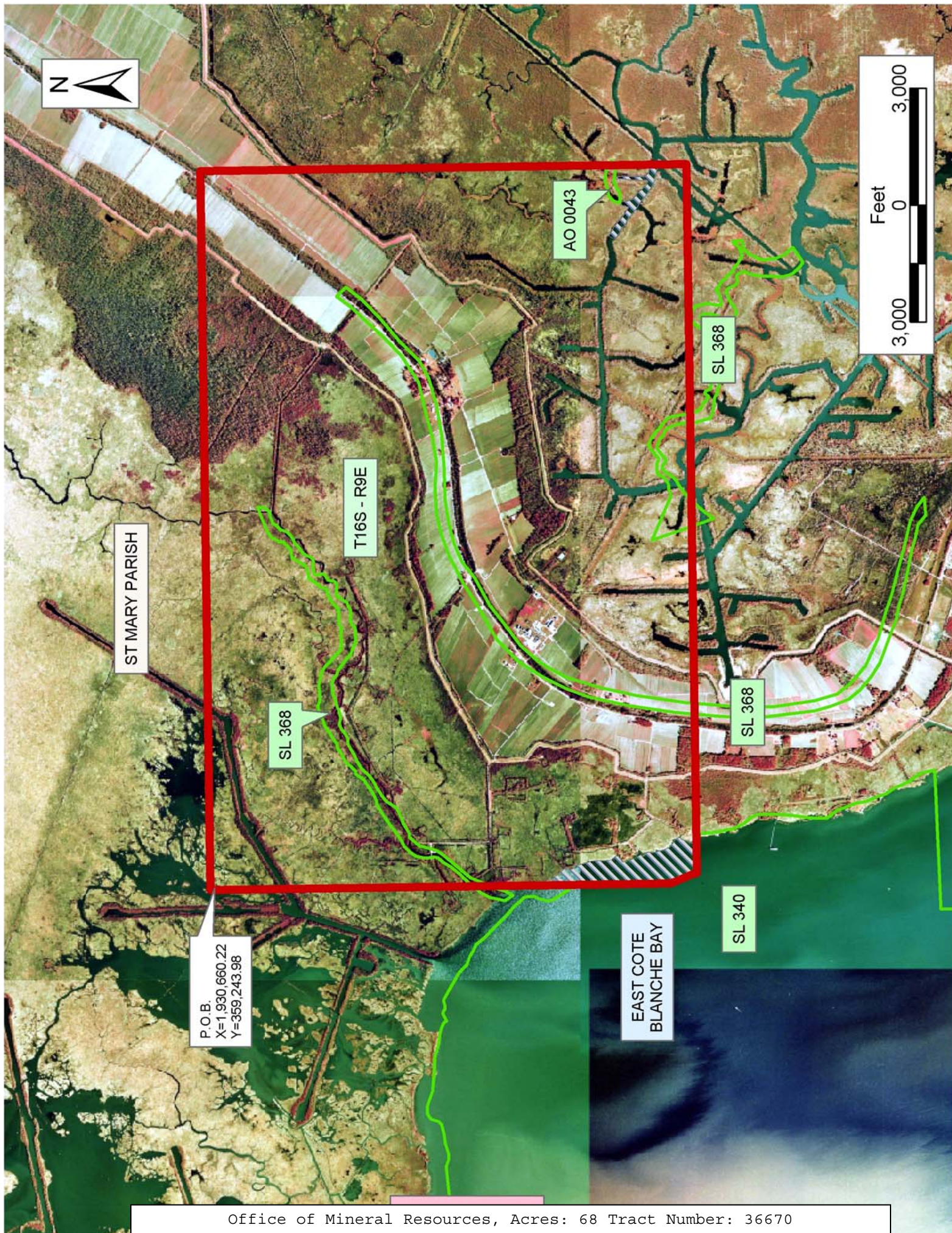
NOTE: The State of Louisiana does hereby reserve, and this lease shall be subject to, the imprescriptible right of surface use in the nature of a servitude in favor of the Department of Natural Resources, including its Offices and Commissions, for the sole purpose of implementing, constructing, servicing and maintaining approved coastal zone management and/or restoration projects. Utilization of any and all rights derived under this lease by the mineral lessee, its agents, successors or assigns, shall not interfere with nor hinder the reasonable surface use by the

Department of Natural Resources, its Offices or Commissions, as herein above reserved.

NOTE: The Department of Wildlife and Fisheries has designated certain areas in the coastal waters of the State of Louisiana as Oyster Seed Bed Areas. The exact location of those Seed Bed Areas must be obtained from the Department of Wildlife and Fisheries and any work done under a mineral lease from the State of Louisiana may necessarily be conducted in conformity with the rules and regulations promulgated by the said Department of Wildlife and Fisheries for Oyster Seed Bed Areas.

Applicant: Jerel Exploration, Inc.

| Bidder | Cash Payment | Price/ Acre | Rental | Oil | Gas | Other |
|--------|-----------------|----------------|--------|-----|-----|-------|
| | | | | | | |
| | | | | | | |
| | | | | | | |
| | | | | | | |



TRACT 36671 - St. Mary Parish, Louisiana

All of the lands now or formerly constituting the beds and bottoms of all water bodies of every nature and description the title of which vests in the State of Louisiana, together with all islands arising therein and other lands formed by accretion or by reliction, where allowed by law, excepting tax adjudicated lands, and not presently under mineral lease on September 8, 2004, situated in St. Mary Parish, Louisiana, and more particularly described as follows: Beginning at a point having Coordinates of X = 1,903,000.00 and Y = 359,243.98; Thence South 10,000.00 feet to a point having Coordinates of X = 1,903,000.00 and Y = 349,243.98; Thence West 11,032.02 feet to a point having Coordinates of X = 1,891,967.98 and Y = 349,243.98; Thence North 10,000.00 feet to a point having Coordinates of X = 1,891,967.98 and Y = 359,243.98; Thence East 11,032.02 feet to the point of beginning, containing approximately **2,416 acres**, all as more particularly outlined on a plat on file in the Office of Mineral Resources, Department of Natural Resources. All bearings, distances and coordinates are based on Louisiana Coordinate System of 1927, (North or South Zone), where applicable.

NOTE: The above description of the Tract nominated for lease has been provided and corrected, where required, exclusively by the nomination party. Any mineral lease selected from this Tract and awarded by the Louisiana State Mineral Board shall be without warranty of any kind, either express, implied, or statutory, including, but not limited to, the implied warranties of merchantability and fitness for a particular purpose. Should the mineral lease awarded by the Louisiana State Mineral Board be subsequently modified, cancelled or abrogated due to the existence of conflicting leases, operating agreements, private claims or other future obligations or conditions which may affect all or any portion of the leased Tract, it shall not relieve the Lessee of the obligation to pay any bonus due thereon to the Louisiana State Mineral Board, nor shall the Louisiana State Mineral Board be obligated to refund any consideration paid by the Lessor prior to such modification, cancellation, or abrogation, including, but not limited to, bonuses, rentals and royalties.

NOTE: The State of Louisiana does hereby reserve, and this lease shall be subject to, the imprescriptible right of surface use in the nature of a servitude in favor of the Department of Natural Resources, including its Offices and Commissions, for the sole purpose of implementing, constructing, servicing and maintaining approved coastal zone management and/or restoration projects. Utilization of any and all rights derived under this lease by the mineral lessee, its agents, successors or assigns, shall not interfere with nor hinder the reasonable surface use by the Department of Natural Resources, its Offices or Commissions, as herein above reserved.

NOTE: The Department of Wildlife and Fisheries has designated certain areas in the coastal waters of the State of Louisiana as Oyster Seed Bed Areas. The exact location of those Seed Bed Areas must be obtained from

the Department of Wildlife and Fisheries and any work done under a mineral lease from the State of Louisiana may necessarily be conducted in conformity with the rules and regulations promulgated by the said Department of Wildlife and Fisheries for Oyster Seed Bed Areas.

Applicant: Jerel Exploration, Inc.

| Bidder | Cash Payment | Price/ Acre | Rental | Oil | Gas | Other |
|--------|-----------------|----------------|--------|-----|-----|-------|
| | | | | | | |
| | | | | | | |
| | | | | | | |
| | | | | | | |



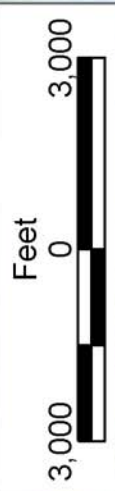
P.O.B.
X=1,903,000.00
Y=359,243.98

ST MARY PARISH



EAST COTE BLANCHE BAY

IBERIA PARISH



TRACT 36672 - St. Mary Parish, Louisiana

All of the lands now or formerly constituting the beds and bottoms of all water bodies of every nature and description the title of which vests in the State of Louisiana, together with all islands arising therein and other lands formed by accretion or by reliction, where allowed by law, excepting tax adjudicated lands, and not presently under mineral lease on September 8, 2004, situated in St. Mary Parish, Louisiana, and more particularly described as follows: Beginning at a point having Coordinates of X = 1,912,180.22 and Y = 359,243.98; thence South 16,743.98 feet to a point on the North line of State Lease No. 16381, having Coordinates of X = 1,912,180.22 and Y = 342,500.00; thence West 9,180.22 feet along the North line of said State Lease No. 16381 to its Northwest corner, having Coordinates of X = 1,903,000.00 and Y = 342,500.00; thence North 16,743.98 feet to a point having Coordinates of X = 1,903,000.00 and Y = 359,243.98; thence East 9,180.22 feet to the point of beginning, containing approximately **2,042 acres**, all as more particularly outlined on a plat on file in the Office of Mineral Resources, Department of Natural Resources. All bearings, distances and coordinates are based on Louisiana Coordinate System of 1927, (North or South Zone), where applicable.

NOTE: The above description of the Tract nominated for lease has been provided and corrected, where required, exclusively by the nomination party. Any mineral lease selected from this Tract and awarded by the Louisiana State Mineral Board shall be without warranty of any kind, either express, implied, or statutory, including, but not limited to, the implied warranties of merchantability and fitness for a particular purpose. Should the mineral lease awarded by the Louisiana State Mineral Board be subsequently modified, cancelled or abrogated due to the existence of conflicting leases, operating agreements, private claims or other future obligations or conditions which may affect all or any portion of the leased Tract, it shall not relieve the Lessee of the obligation to pay any bonus due thereon to the Louisiana State Mineral Board, nor shall the Louisiana State Mineral Board be obligated to refund any consideration paid by the Lessor prior to such modification, cancellation, or abrogation, including, but not limited to, bonuses, rentals and royalties.

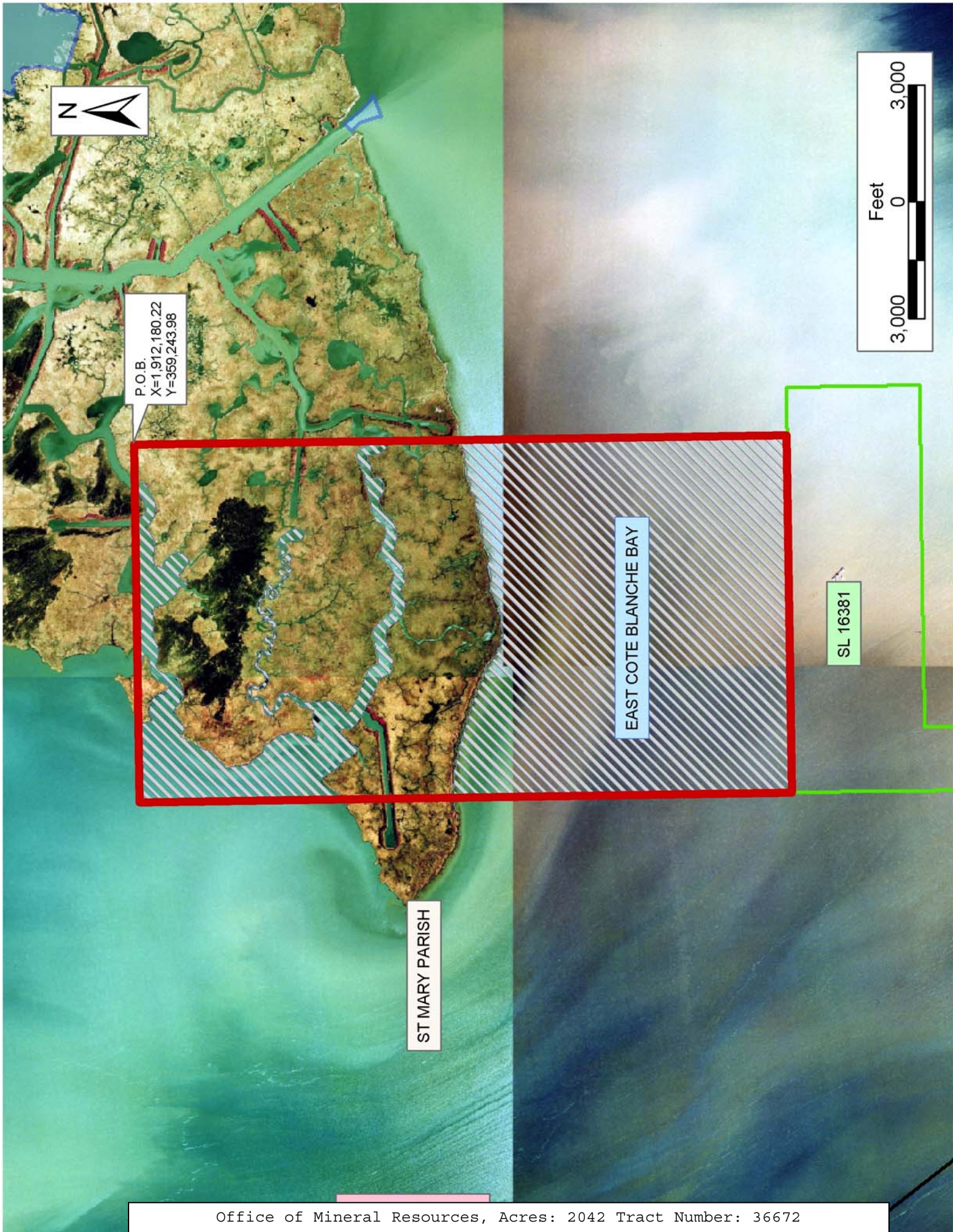
NOTE: The State of Louisiana does hereby reserve, and this lease shall be subject to, the imprescriptible right of surface use in the nature of a servitude in favor of the Department of Natural Resources, including its Offices and Commissions, for the sole purpose of implementing, constructing, servicing and maintaining approved coastal zone management and/or restoration projects. Utilization of any and all rights derived under this lease by the mineral lessee, its agents, successors or assigns, shall not interfere with nor hinder the reasonable surface use by the Department of Natural Resources, its Offices or Commissions, as herein above reserved.

NOTE: The Department of Wildlife and Fisheries has designated certain areas in the coastal waters of the State of Louisiana as Oyster Seed Bed

Areas. The exact location of those Seed Bed Areas must be obtained from the Department of Wildlife and Fisheries and any work done under a mineral lease from the State of Louisiana may necessarily be conducted in conformity with the rules and regulations promulgated by the said Department of Wildlife and Fisheries for Oyster Seed Bed Areas.

Applicant: Jerel Exploration, Inc.

| Bidder | Cash Payment | Price/ Acre | Rental | Oil | Gas | Other |
|--------|-----------------|----------------|--------|-----|-----|-------|
| | | | | | | |
| | | | | | | |
| | | | | | | |
| | | | | | | |



TRACT 36673 - St. Mary Parish, Louisiana

All of the lands now or formerly constituting the beds and bottoms of all water bodies of every nature and description the title of which vests in the State of Louisiana, together with all islands arising therein and other lands formed by accretion or by reliction, where allowed by law, excepting tax adjudicated lands, and not presently under mineral lease on September 8, 2004, situated in St. Mary Parish, Louisiana, and more particularly described as follows: Beginning at a point having Coordinates of X = 1,930,660.22 and Y = 359,243.98; thence South approximately 11,825 feet to an intersection point on the Eastern boundary of State Lease No. 340, as amended, having a Coordinate of X = 1,930,660.22; thence Northwesterly, Northeasterly and Northwesterly along the Eastern and Northern boundaries of said State Lease No. 340, to its Northwest corner; thence Southerly on a straight line approximately 3,708 feet to the Northwest corner of State Lease No. 17926; thence Southerly on a straight line approximately 4,499 feet along the West boundary of said State Lease No. 17926 to the Northeast corner of State Lease No. 16381 having a Coordinate of Y = 342,500.00; thence West approximately 1,233 feet along the North boundary of said State Lease No. 16381 to a point having Coordinates of X = 1,912,180.22 and Y = 342,500.00; thence North 16,743.98 feet to a point having Coordinates of X = 1,912,180.22 and Y = 359,243.98; thence East 18,480.00 feet to the point of beginning, **LESS AND EXCEPT** any portion of State Lease No. 340, as amended, State Lease No. 17926, State Lease No. 16381, and State Lease No. 368, which may lie within the above described tract, containing approximately **736 acres**, all as more particularly outlined on a plat on file in the Office of Mineral Resources, Department of Natural Resources. All bearings, distances and coordinates are based on Louisiana Coordinate System of 1927, (North or South Zone), where applicable.

NOTE: The above description of the Tract nominated for lease has been provided and corrected, where required, exclusively by the nomination party. Any mineral lease selected from this Tract and awarded by the Louisiana State Mineral Board shall be without warranty of any kind, either express, implied, or statutory, including, but not limited to, the implied warranties of merchantability and fitness for a particular purpose. Should the mineral lease awarded by the Louisiana State Mineral Board be subsequently modified, cancelled or abrogated due to the existence of conflicting leases, operating agreements, private claims or other future obligations or conditions which may affect all or any portion of the leased Tract, it shall not relieve the Lessee of the obligation to pay any bonus due thereon to the Louisiana State Mineral Board, nor shall the Louisiana State Mineral Board be obligated to refund any consideration paid by the Lessor prior to such modification, cancellation, or abrogation, including, but not limited to, bonuses, rentals and royalties.

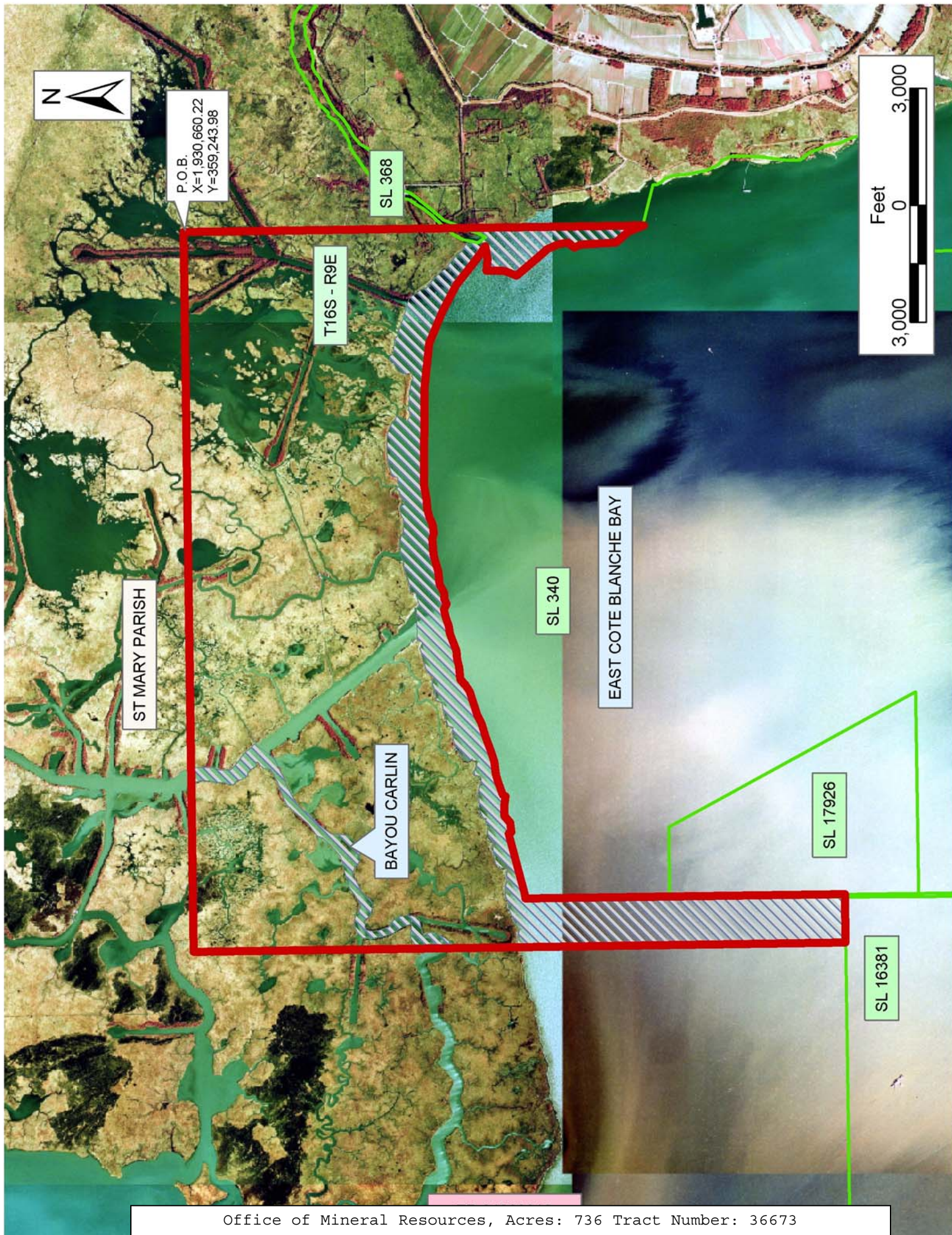
NOTE: The State of Louisiana does hereby reserve, and this lease shall be subject to, the imprescriptible right of surface use in the nature of a servitude in favor of the Department of Natural Resources, including its

Offices and Commissions, for the sole purpose of implementing, constructing, servicing and maintaining approved coastal zone management and/or restoration projects. Utilization of any and all rights derived under this lease by the mineral lessee, its agents, successors or assigns, shall not interfere with nor hinder the reasonable surface use by the Department of Natural Resources, its Offices or Commissions, as herein above reserved.

NOTE: The Department of Wildlife and Fisheries has designated certain areas in the coastal waters of the State of Louisiana as Oyster Seed Bed Areas. The exact location of those Seed Bed Areas must be obtained from the Department of Wildlife and Fisheries and any work done under a mineral lease from the State of Louisiana may necessarily be conducted in conformity with the rules and regulations promulgated by the said Department of Wildlife and Fisheries for Oyster Seed Bed Areas.

Applicant: Jerel Exploration, Inc.

| Bidder | Cash Payment | Price/ Acre | Rental | Oil | Gas | Other |
|--------|-----------------|----------------|--------|-----|-----|-------|
| | | | | | | |
| | | | | | | |
| | | | | | | |
| | | | | | | |



TRACT 36674 - Iberia and St. Mary Parishes, Louisiana

All of the lands now or formerly constituting the beds and bottoms of all water bodies of every nature and description the title of which vests in the State of Louisiana, together with all islands arising therein and other lands formed by accretion or by reliction, where allowed by law, excepting tax adjudicated lands, and not presently under mineral lease on September 8, 2004, situated in Iberia and St. Mary Parishes, Louisiana, and more particularly described as follows: Beginning at a point having Coordinates of X = 1,891,967.98 and Y = 337,650.00; Thence North 426.00 feet to a point on the South boundary of State Lease No. 10835, as amended, having Coordinates of X = 1,891,967.98 and Y = 338,076.00; Thence East 2,372.74 feet along the said South boundary of State Lease No. 10835, as amended, to its Southeast corner having Coordinates of X = 1,894,340.72 and Y = 338,076.00; Thence North 2,832.77 feet along the East boundary of said State Lease No. 10835, as amended, to the Southwest corner of State Lease No. 12897 having Coordinates of X = 1,894,340.72 and Y = 340,908.77; Thence along the boundaries of said State Lease No. 12897 the following courses: East 2,959.28 feet to its Southeast corner having Coordinates of X = 1,897,300.00 and Y = 340,908.77; North 3,600.00 feet to its Northeast corner having Coordinates of X = 1,897,300.00 and Y = 344,508.77; West 1,800.00 feet to its most Northern Northwest corner, also being the Northeast corner of State Lease No. 13403 having Coordinates of X = 1,895,500.00 and Y = 344,508.77; Thence West 1,159.28 feet along the North boundary of said State Lease No. 13403 to its Northwest corner, also being the Northeast corner of State Lease No. 10835, as amended, having Coordinates of X = 1,894,340.72 and Y = 344,508.77; Thence West 2,372.74 feet along the North boundary of said State Lease No. 10835, as amended to a point having Coordinates of X = 1,891,967.98 and Y = 344,508.77; Thence North 4,735.21 feet to a point having Coordinates of X = 1,891,967.98 and Y = 349,243.98; Thence East 11,032.02 feet to a point having Coordinates of X = 1,903,000.00 and Y = 349,243.98; Thence South 6,743.98 feet to the Northwest corner of State Lease No. 16381 having Coordinates of X = 1,903,000.00 and Y = 342,500.00; Thence South 4,850.00 feet along the West boundary of said State Lease No. 16381 to its Southwest corner, also being a point on the North boundary of State Lease No. 16382 having Coordinates of X = 1,903,000.00 and Y = 337,650.00; Thence West 2,500.00 feet along the said north boundary of State lease No. 16382 to its Northwest corner having Coordinates of X = 1,900,500.00 and Y = 337,650.00; Thence West 8,532.02 feet to the point of beginning, containing approximately **2,341.33 acres**, all as more particularly outlined on a plat on file in the Office of Mineral Resources, Department of Natural Resources. All bearings, distances and coordinates are based on Louisiana Coordinate System of 1927, (North or South Zone), where applicable.

NOTE: The above description of the Tract nominated for lease has been provided and corrected, where required, exclusively by the nomination party. Any mineral lease selected from this Tract and awarded by the Louisiana State Mineral Board shall be without warranty of any kind, either express, implied, or statutory, including, but not limited to, the

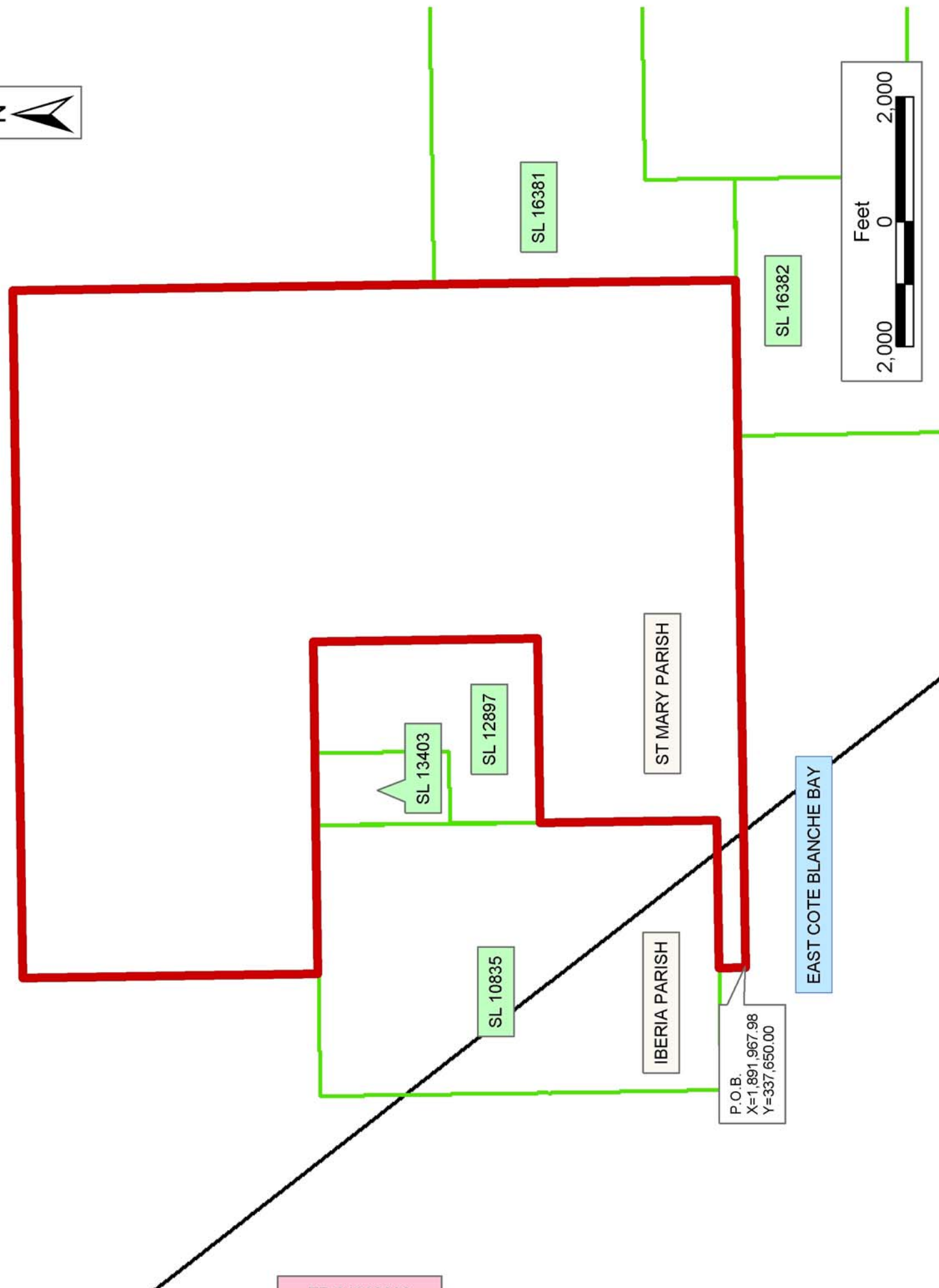
implied warranties of merchantability and fitness for a particular purpose. Should the mineral lease awarded by the Louisiana State Mineral Board be subsequently modified, cancelled or abrogated due to the existence of conflicting leases, operating agreements, private claims or other future obligations or conditions which may affect all or any portion of the leased Tract, it shall not relieve the Lessee of the obligation to pay any bonus due thereon to the Louisiana State Mineral Board, nor shall the Louisiana State Mineral Board be obligated to refund any consideration paid by the Lessor prior to such modification, cancellation, or abrogation, including, but not limited to, bonuses, rentals and royalties.

NOTE: The State of Louisiana does hereby reserve, and this lease shall be subject to, the imprescriptible right of surface use in the nature of a servitude in favor of the Department of Natural Resources, including its Offices and Commissions, for the sole purpose of implementing, constructing, servicing and maintaining approved coastal zone management and/or restoration projects. Utilization of any and all rights derived under this lease by the mineral lessee, its agents, successors or assigns, shall not interfere with nor hinder the reasonable surface use by the Department of Natural Resources, its Offices or Commissions, as herein above reserved.

NOTE: The Department of Wildlife and Fisheries has designated certain areas in the coastal waters of the State of Louisiana as Oyster Seed Bed Areas. The exact location of those Seed Bed Areas must be obtained from the Department of Wildlife and Fisheries and any work done under a mineral lease from the State of Louisiana may necessarily be conducted in conformity with the rules and regulations promulgated by the said Department of Wildlife and Fisheries for Oyster Seed Bed Areas.

Applicant: Jerel Exploration, Inc.

| Bidder | Cash Payment | Price/ Acre | Rental | Oil | Gas | Other |
|--------|-----------------|----------------|--------|-----|-----|-------|
| | | | | | | |
| | | | | | | |
| | | | | | | |
| | | | | | | |



TRACT 36675 - Iberia and St. Mary Parishes, Louisiana

All of the lands now or formerly constituting the beds and bottoms of all water bodies of every nature and description the title of which vests in the State of Louisiana, together with all islands arising therein and other lands formed by accretion or by reliction, where allowed by law, excepting tax adjudicated lands, and not presently under mineral lease on September 8, 2004, situated in Iberia and St. Mary Parishes, Louisiana, and more particularly described as follows: Beginning at a point having Coordinates of X = 1,891,967.98 and Y = 337,650.00; Thence East 8,532.02 feet to the Northwest corner of State Lease No. 16382 having Coordinates of X = 1,900,500.00 and Y = 337,650.00; Thence South 4,650.00 feet along the West boundary of said State Lease No. 16382 to its Southwest corner, also being the Northwest corner of State Lease No. 17135 having Coordinates of X = 1,900,500.00 and Y = 333,000.00; Thence South 2,000.00 feet along the West boundary of said State Lease No. 17135 to its Southwest corner having Coordinates of X = 1,900,500.00 and Y = 331,000.00; Thence East 9,872.32 feet along the South boundary of said State Lease No. 17135 to its Southeast corner having Coordinates of X = 1,910,372.32 and Y = 331,000.00; Thence South 2,834.22 feet to a point having Coordinates of X = 1,910,372.32 and Y = 328,165.78; Thence West 18,404.34 feet to a point having Coordinates of X = 1,891,967.98 and Y = 328,165.78; Thence North 9,484.22 feet to the point of beginning, containing approximately **2,500.00 acres**, all as more particularly outlined on a plat on file in the Office of Mineral Resources, Department of Natural Resources. All bearings, distances and coordinates are based on Louisiana Coordinate System of 1927, (North or South Zone), where applicable.

NOTE: The above description of the Tract nominated for lease has been provided and corrected, where required, exclusively by the nomination party. Any mineral lease selected from this Tract and awarded by the Louisiana State Mineral Board shall be without warranty of any kind, either express, implied, or statutory, including, but not limited to, the implied warranties of merchantability and fitness for a particular purpose. Should the mineral lease awarded by the Louisiana State Mineral Board be subsequently modified, cancelled or abrogated due to the existence of conflicting leases, operating agreements, private claims or other future obligations or conditions which may affect all or any portion of the leased Tract, it shall not relieve the Lessee of the obligation to pay any bonus due thereon to the Louisiana State Mineral Board, nor shall the Louisiana State Mineral Board be obligated to refund any consideration paid by the Lessor prior to such modification, cancellation, or abrogation, including, but not limited to, bonuses, rentals and royalties.

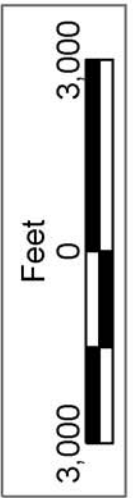
NOTE: The State of Louisiana does hereby reserve, and this lease shall be subject to, the imprescriptible right of surface use in the nature of a servitude in favor of the Department of Natural Resources, including its Offices and Commissions, for the sole purpose of implementing, constructing, servicing and maintaining approved coastal zone management

and/or restoration projects. Utilization of any and all rights derived under this lease by the mineral lessee, its agents, successors or assigns, shall not interfere with nor hinder the reasonable surface use by the Department of Natural Resources, its Offices or Commissions, as herein above reserved.

NOTE: The Department of Wildlife and Fisheries has designated certain areas in the coastal waters of the State of Louisiana as Oyster Seed Bed Areas. The exact location of those Seed Bed Areas must be obtained from the Department of Wildlife and Fisheries and any work done under a mineral lease from the State of Louisiana may necessarily be conducted in conformity with the rules and regulations promulgated by the said Department of Wildlife and Fisheries for Oyster Seed Bed Areas.

Applicant: Jerel Exploration, Inc.

| Bidder | Cash Payment | Price/ Acre | Rental | Oil | Gas | Other |
|--------|-----------------|----------------|--------|-----|-----|-------|
| | | | | | | |
| | | | | | | |
| | | | | | | |
| | | | | | | |



ST MARY PARISH

P.O.B.
X=1,891,967.98
Y=337,650.00

SL 16382

SL 17135

EAST COTE BLANCHE BAY

IBERIA PARISH

TRACT 36676 - Plaquemines Parish, Louisiana

All of the lands now or formerly constituting the beds and bottoms of all water bodies of every nature and description the title of which vests in the State of Louisiana, together with all islands arising therein and other lands formed by accretion or by reliction, where allowed by law, excepting tax adjudicated lands, and not presently under mineral lease on September 8, 2004, situated in Plaquemines Parish, Louisiana, and more particularly described as follows: Beginning at a point having Coordinates of X = 2,461,400.00 and Y = 308,320.00; thence North 18,480.00 feet to a point having Coordinates of X = 2,461,400.00 and Y = 326,800.00; thence East 18,480.00 feet to a point having Coordinates of X = 2,479,880.00 and Y = 326,800.00; thence South 18,480.00 feet to a point having Coordinates of X = 2,479,880.00 and Y = 308,320.00; thence West 18,480.00 feet to the point of beginning, **LESS AND EXCEPT** that portion, if any, of State Lease No. 707, that may lie within the above described tract, containing approximately **45 acres**, all as more particularly outlined on a plat on file in the Office of Mineral Resources, Department of Natural Resources. All bearings, distances and coordinates are based on Louisiana Coordinate System of 1927, (North or South Zone), where applicable.

NOTE: The above description of the Tract nominated for lease has been provided and corrected, where required, exclusively by the nomination party. Any mineral lease selected from this Tract and awarded by the Louisiana State Mineral Board shall be without warranty of any kind, either express, implied, or statutory, including, but not limited to, the implied warranties of merchantability and fitness for a particular purpose. Should the mineral lease awarded by the Louisiana State Mineral Board be subsequently modified, cancelled or abrogated due to the existence of conflicting leases, operating agreements, private claims or other future obligations or conditions which may affect all or any portion of the leased Tract, it shall not relieve the Lessee of the obligation to pay any bonus due thereon to the Louisiana State Mineral Board, nor shall the Louisiana State Mineral Board be obligated to refund any consideration paid by the Lessor prior to such modification, cancellation, or abrogation, including, but not limited to, bonuses, rentals and royalties.

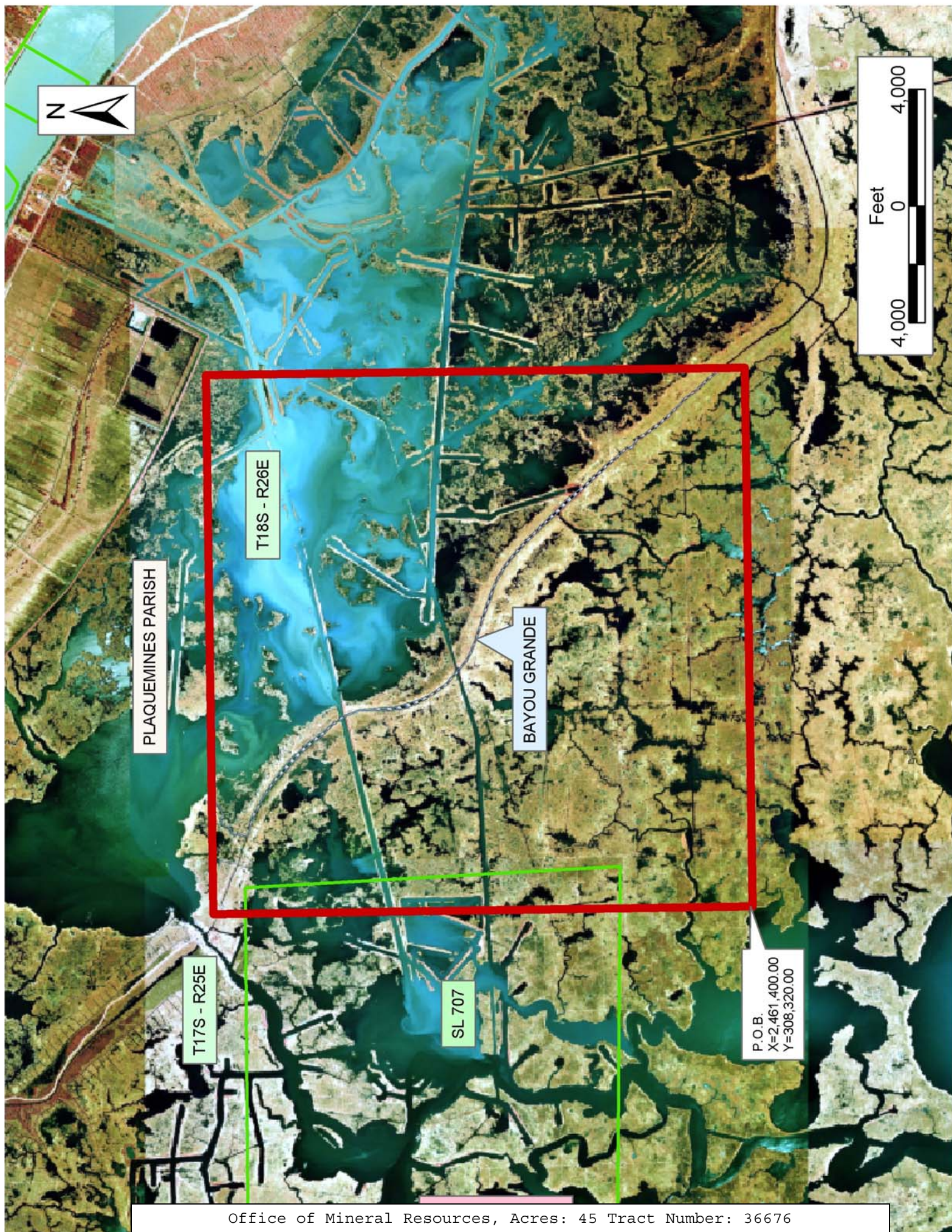
NOTE: The State of Louisiana does hereby reserve, and this lease shall be subject to, the imprescriptible right of surface use in the nature of a servitude in favor of the Department of Natural Resources, including its Offices and Commissions, for the sole purpose of implementing, constructing, servicing and maintaining approved coastal zone management and/or restoration projects. Utilization of any and all rights derived under this lease by the mineral lessee, its agents, successors or assigns, shall not interfere with nor hinder the reasonable surface use by the Department of Natural Resources, its Offices or Commissions, as herein above reserved.

NOTE: The Department of Wildlife and Fisheries has designated certain areas in the coastal waters of the State of Louisiana as Oyster Seed Bed

Areas. The exact location of those Seed Bed Areas must be obtained from the Department of Wildlife and Fisheries and any work done under a mineral lease from the State of Louisiana may necessarily be conducted in conformity with the rules and regulations promulgated by the said Department of Wildlife and Fisheries for Oyster Seed Bed Areas.

Applicant: Ken Savage & Associates, Inc.

| Bidder | Cash Payment | Price/ Acre | Rental | Oil | Gas | Other |
|--------|-----------------|----------------|--------|-----|-----|-------|
| | | | | | | |
| | | | | | | |
| | | | | | | |
| | | | | | | |



TRACT 36677 - Terrebonne Parish, Louisiana

All of the lands now or formerly constituting the beds and bottoms of all water bodies of every nature and description the title of which vests in the State of Louisiana, together with all islands arising therein and other lands formed by accretion or by reliction, where allowed by law, excepting tax adjudicated lands, and not presently under mineral lease on September 8, 2004, situated in Terrebonne Parish, Louisiana, and more particularly described as follows: Beginning at a point having Coordinates of X = 2,044,380.00 and Y = 293,280.00; thence North 2,790.00 feet; thence East 2,670.00 feet; thence North 2,620.00 feet; thence East 2,605.00 feet to the most North Northwest corner of State Lease No. 17210 having Coordinates of X = 2,049,655.00 and Y = 298,690.00; thence along the boundaries of said State Lease No. 17210 the following: South 01 degrees 46 minutes 10 seconds East 9,259.46 feet, South 89 degrees 43 minutes 01 seconds West 1,342.48 feet, South 01 degrees 49 minutes 35 seconds East 3,966.71 feet, South 89 degrees 21 minutes 33 seconds West 2,756.89 feet and South 00 degrees 20 minutes 14 seconds East 3,994.60 feet to the most South Southwest corner of said State Lease No. 17210 having Coordinates of X = 2,045,991.63 and Y = 281,438.27; thence West 6,591.63 feet to a point having Coordinates of X = 2,039,400.00 and Y = 281,438.27; thence North 11,841.73 feet to a point having Coordinates of X = 2,039,400.00 and Y = 293,280.00; thence East 4,980.00 feet to the point of beginning, containing approximately **72 acres**, all as more particularly outlined on a plat on file in the Office of Mineral Resources, Department of Natural Resources. All bearings, distances and coordinates are based on Louisiana Coordinate System of 1927, (North or South Zone), where applicable.

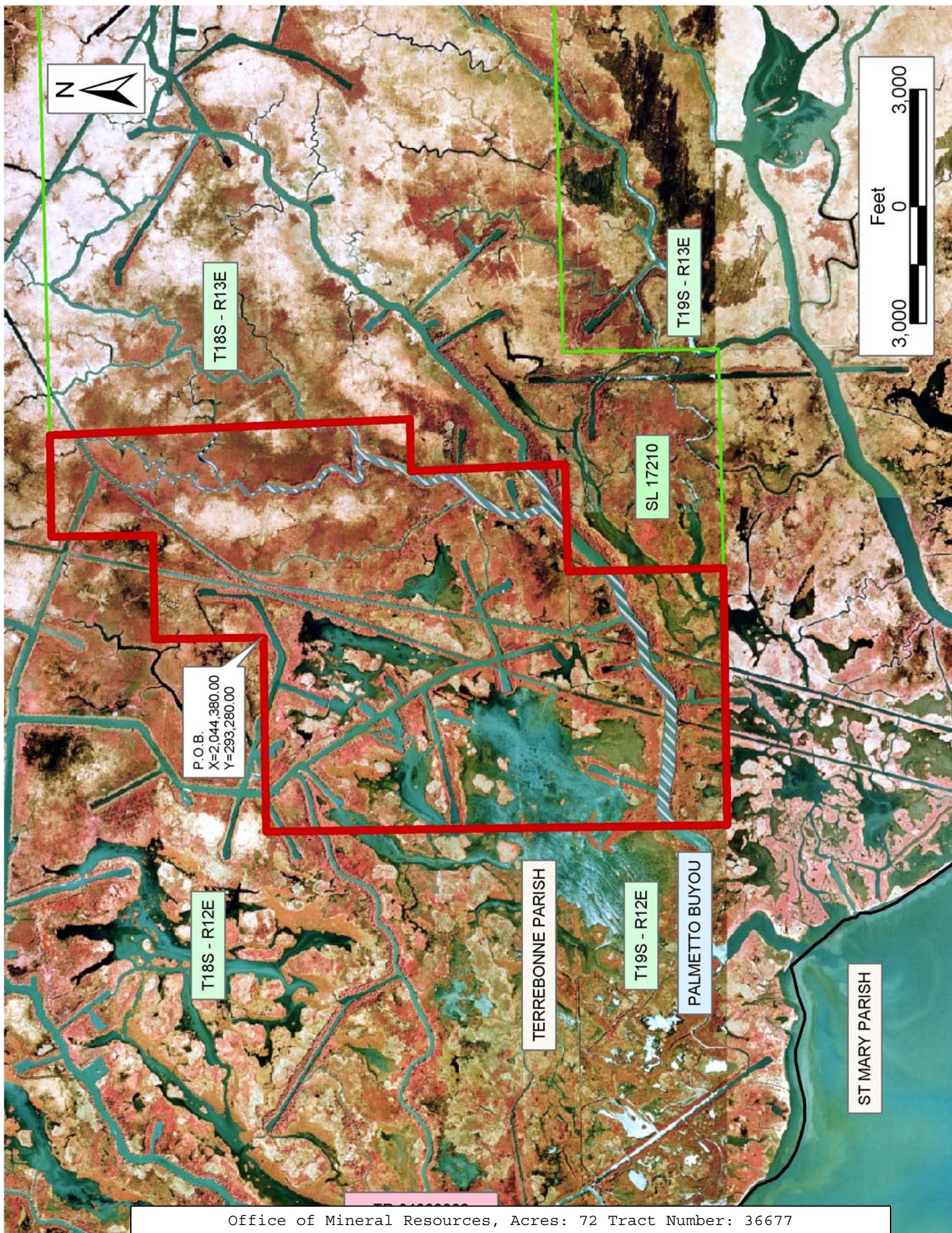
NOTE: The above description of the Tract nominated for lease has been provided and corrected, where required, exclusively by the nomination party. Any mineral lease selected from this Tract and awarded by the Louisiana State Mineral Board shall be without warranty of any kind, either express, implied, or statutory, including, but not limited to, the implied warranties of merchantability and fitness for a particular purpose. Should the mineral lease awarded by the Louisiana State Mineral Board be subsequently modified, cancelled or abrogated due to the existence of conflicting leases, operating agreements, private claims or other future obligations or conditions which may affect all or any portion of the leased Tract, it shall not relieve the Lessee of the obligation to pay any bonus due thereon to the Louisiana State Mineral Board, nor shall the Louisiana State Mineral Board be obligated to refund any consideration paid by the Lessor prior to such modification, cancellation, or abrogation, including, but not limited to, bonuses, rentals and royalties.

NOTE: The State of Louisiana does hereby reserve, and this lease shall be subject to, the imprescriptible right of surface use in the nature of a servitude in favor of the Department of Natural Resources, including its Offices and Commissions, for the sole purpose of implementing, constructing, servicing and maintaining approved coastal zone management and/or restoration projects. Utilization of any and all rights derived

under this lease by the mineral lessee, its agents, successors or assigns, shall not interfere with nor hinder the reasonable surface use by the Department of Natural Resources, its Offices or Commissions, as herein above reserved.

Applicant: Leslie L Moore

| Bidder | Cash Payment | Price/ Acre | Rental | Oil | Gas | Other |
|--------|-----------------|----------------|--------|-----|-----|-------|
| | | | | | | |
| | | | | | | |
| | | | | | | |
| | | | | | | |



TRACT 36678 - Terrebonne Parish, Louisiana

All of the lands now or formerly constituting the beds and bottoms of all water bodies of every nature and description the title of which vests in the State of Louisiana, together with all islands arising therein and other lands formed by accretion or by reliction, where allowed by law, excepting tax adjudicated lands, and not presently under mineral lease on September 8, 2004, situated in Terrebonne Parish, Louisiana, and more particularly described as follows: Beginning at the most South Southwest corner of State Lease No. 17210 having Coordinates of X = 2,045,991.63 and Y = 281,438.27; thence along the boundary of said State Lease No. 17210 the following: North 89 degrees 28 minutes 41 seconds East 5,639.97 feet, North 00 degrees 18 minutes 47 seconds West 3,988.96 feet, North 89 degrees 17 minutes 36 seconds East 5,315.83 feet to a point on the South line of said State Lease No. 17210 having Coordinates of X = 2,056,925.00 and Y = 285,544.14; thence South 10,744.14 feet to a point having Coordinates of X = 2,056,925.00 and Y = 274,800.00; thence West 17,525.00 feet to a point having Coordinates of X = 2,039,400.00 and Y = 274,800.00; thence North 6,638.27 feet to a point having Coordinates of X = 2,039,400.00 and Y = 281,438.27; thence East 6,691.63 feet to the point of beginning, containing approximately **157 acres**, all as more particularly outlined on a plat on file in the Office of Mineral Resources, Department of Natural Resources. All bearings, distances and coordinates are based on Louisiana Coordinate System of 1927, (North or South Zone), where applicable.

NOTE: The above description of the Tract nominated for lease has been provided and corrected, where required, exclusively by the nomination party. Any mineral lease selected from this Tract and awarded by the Louisiana State Mineral Board shall be without warranty of any kind, either express, implied, or statutory, including, but not limited to, the implied warranties of merchantability and fitness for a particular purpose. Should the mineral lease awarded by the Louisiana State Mineral Board be subsequently modified, cancelled or abrogated due to the existence of conflicting leases, operating agreements, private claims or other future obligations or conditions which may affect all or any portion of the leased Tract, it shall not relieve the Lessee of the obligation to pay any bonus due thereon to the Louisiana State Mineral Board, nor shall the Louisiana State Mineral Board be obligated to refund any consideration paid by the Lessor prior to such modification, cancellation, or abrogation, including, but not limited to, bonuses, rentals and royalties.

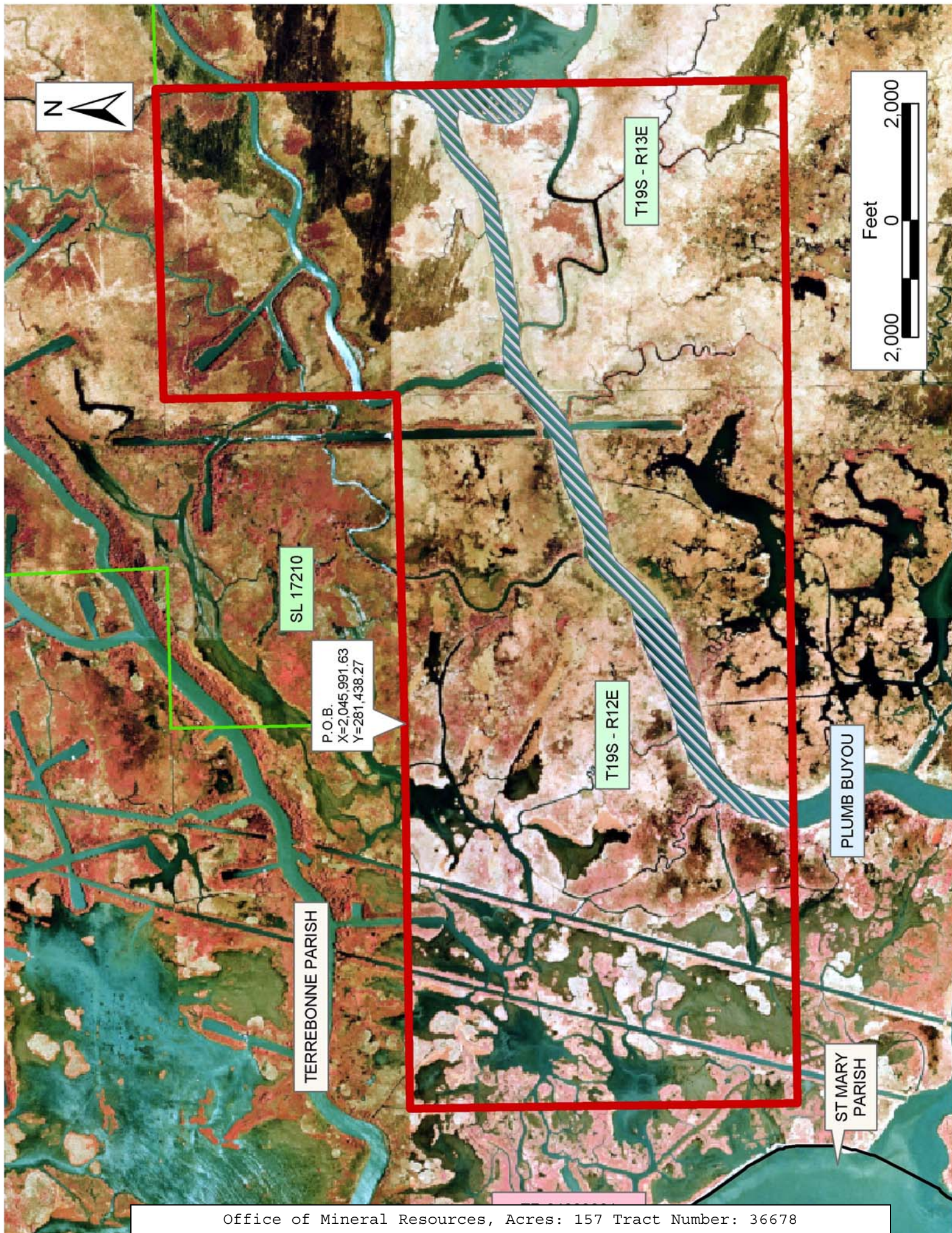
NOTE: The State of Louisiana does hereby reserve, and this lease shall be subject to, the imprescriptible right of surface use in the nature of a servitude in favor of the Department of Natural Resources, including its Offices and Commissions, for the sole purpose of implementing, constructing, servicing and maintaining approved coastal zone management and/or restoration projects. Utilization of any and all rights derived under this lease by the mineral lessee, its agents, successors or assigns, shall not interfere with nor hinder the reasonable surface use by the

Department of Natural Resources, its Offices or Commissions, as herein above reserved.

NOTE: The Department of Wildlife and Fisheries has designated certain areas in the coastal waters of the State of Louisiana as Oyster Seed Bed Areas. The exact location of those Seed Bed Areas must be obtained from the Department of Wildlife and Fisheries and any work done under a mineral lease from the State of Louisiana may necessarily be conducted in conformity with the rules and regulations promulgated by the said Department of Wildlife and Fisheries for Oyster Seed Bed Areas.

Applicant: Leslie L Moore

| Bidder | Cash Payment | Price/ Acre | Rental | Oil | Gas | Other |
|--------|-----------------|----------------|--------|-----|-----|-------|
| | | | | | | |
| | | | | | | |
| | | | | | | |
| | | | | | | |



TRACT 36679 - Terrebonne Parish, Louisiana

All of the lands now or formerly constituting the beds and bottoms of all water bodies of every nature and description the title of which vests in the State of Louisiana, together with all islands arising therein and other lands formed by accretion or by reliction, where allowed by law, excepting tax adjudicated lands, and not presently under mineral lease on September 8, 2004, situated in Terrebonne Parish, Louisiana, and more particularly described as follows: Beginning at the Northwest corner of State Lease No. 16446 and a point on the East line of State Lease No. 17895 having Coordinates of X = 2,216,569.91 and Y = 248,738.30; thence along the boundary of said State Lease No. 17895 the following: North 30 degrees 56 minutes 16 seconds East 1,383.54 feet, West 3,481.36 feet, South 1,142.56 feet, West 1,776.65 feet, South 838.84 feet, West 1,063.19 feet, South 1,839.44 feet, and East 3,295.06 feet to its Southeast corner, also being a point on the West line of said State Lease No. 16446; thence along the boundary of said State Lease No. 16446 the following: South 45 degrees 18 minutes 00 seconds West 844.95 feet, South 40 degrees 19 minutes 29 seconds West 1,075.82 feet, South 21 degrees 06 minutes 55 seconds West 965.12 feet, South 06 degrees 40 minutes 40 seconds West 928.92 feet and South 07 degrees 50 minutes 37 seconds West 361.94 feet to a point on its West line having Coordinates of X = 2,212,453.20 and Y = 242,508.14; thence West 6,778.95 feet to a point having Coordinates of X = 2,205,674.24 and Y = 242,508.14; thence North 12,170.93 feet to a point having Coordinates of X = 2,205,674.24 and Y = 254,679.07; thence East 15,000.00 feet to a point having Coordinates of X = 2,220,674.24 and Y = 254,679.07; thence South 1,500.00 feet to a point having Coordinates of X = 2,220,674.24 and Y = 253,179.07; thence South 02 degrees 08 minutes 27 seconds East 2,339.08 feet to the Northwest corner of State Lease No. 15890, as amended having Coordinates of X = 2,220,761.62 and Y = 250,841.62; thence along the West boundary of said State Lease No. 15890 South 10 degrees 48 minutes 00 seconds West 2,786.53 feet to its Southwest corner and a point on the North Line of said State Lease No. 16446 having Coordinates of X = 2,220,239.48 and Y = 248,104.45; thence along the North Line of said State Lease No. 16446 North 80 degrees 11 minutes 59 seconds West 3,723.91 feet to the point of beginning, containing approximately **1,643 acres**, all as more particularly outlined on a plat on file in the Office of Mineral Resources, Department of Natural Resources. All bearings, distances and coordinates are based on Louisiana Coordinate System of 1927, (North or South Zone), where applicable.

NOTE: The above description of the Tract nominated for lease has been provided and corrected, where required, exclusively by the nomination party. Any mineral lease selected from this Tract and awarded by the Louisiana State Mineral Board shall be without warranty of any kind, either express, implied, or statutory, including, but not limited to, the implied warranties of merchantability and fitness for a particular purpose. Should the mineral lease awarded by the Louisiana State Mineral Board be subsequently modified, cancelled or abrogated due to the existence of conflicting leases, operating agreements, private claims or

other future obligations or conditions which may affect all or any portion of the leased Tract, it shall not relieve the Lessee of the obligation to pay any bonus due thereon to the Louisiana State Mineral Board, nor shall the Louisiana State Mineral Board be obligated to refund any consideration paid by the Lessor prior to such modification, cancellation, or abrogation, including, but not limited to, bonuses, rentals and royalties.

NOTE: The State of Louisiana does hereby reserve, and this lease shall be subject to, the imprescriptible right of surface use in the nature of a servitude in favor of the Department of Natural Resources, including its Offices and Commissions, for the sole purpose of implementing, constructing, servicing and maintaining approved coastal zone management and/or restoration projects. Utilization of any and all rights derived under this lease by the mineral lessee, its agents, successors or assigns, shall not interfere with nor hinder the reasonable surface use by the Department of Natural Resources, its Offices or Commissions, as herein above reserved.

NOTE: The Department of Wildlife and Fisheries has designated certain areas in the coastal waters of the State of Louisiana as Oyster Seed Bed Areas. The exact location of those Seed Bed Areas must be obtained from the Department of Wildlife and Fisheries and any work done under a mineral lease from the State of Louisiana may necessarily be conducted in conformity with the rules and regulations promulgated by the said Department of Wildlife and Fisheries for Oyster Seed Bed Areas.

Applicant: Leslie M Cooper

| Bidder | Cash Payment | Price/ Acre | Rental | Oil | Gas | Other |
|--------|-----------------|----------------|--------|-----|-----|-------|
| | | | | | | |
| | | | | | | |
| | | | | | | |
| | | | | | | |

