

**TRACT 36660 - St. Mary Parish, Louisiana**

All of the lands now or formerly constituting the beds and bottoms of all water bodies of every nature and description the title of which vests in the State of Louisiana, together with all islands arising therein and other lands formed by accretion or by reliction, where allowed by law, excepting tax adjudicated lands, and not presently under mineral lease on September 8, 2004, situated in St. Mary Parish, Louisiana, and more particularly described as follows: Beginning at a point having Coordinates of X = 1,912,180.22 and Y = 388,271.93; thence East 18,480.00 feet to a point having Coordinates of X = 1,930,660.22 and Y = 388,271.93; thence South 18,480.00 feet to a point having Coordinates of X = 1,930,660.22 and Y = 369,791.93; thence West 18,480.00 feet to a point having Coordinates of X = 1,912,180.22 and Y = 369,791.93; thence North 18,480.00 feet to the point of beginning, containing approximately **66 acres**, all as more particularly outlined on a plat on file in the Office of Mineral Resources, Department of Natural Resources. All bearings, distances and coordinates are based on Louisiana Coordinate System of 1927, (North or South Zone), where applicable.

NOTE: The above description of the Tract nominated for lease has been provided and corrected, where required, exclusively by the nomination party. Any mineral lease selected from this Tract and awarded by the Louisiana State Mineral Board shall be without warranty of any kind, either express, implied, or statutory, including, but not limited to, the implied warranties of merchantability and fitness for a particular purpose. Should the mineral lease awarded by the Louisiana State Mineral Board be subsequently modified, cancelled or abrogated due to the existence of conflicting leases, operating agreements, private claims or other future obligations or conditions which may affect all or any portion of the leased Tract, it shall not relieve the Lessee of the obligation to pay any bonus due thereon to the Louisiana State Mineral Board, nor shall the Louisiana State Mineral Board be obligated to refund any consideration paid by the Lessor prior to such modification, cancellation, or abrogation, including, but not limited to, bonuses, rentals and royalties.

NOTE: The State of Louisiana does hereby reserve, and this lease shall be subject to, the imprescriptible right of surface use in the nature of a servitude in favor of the Department of Natural Resources, including its Offices and Commissions, for the sole purpose of implementing, constructing, servicing and maintaining approved coastal zone management and/or restoration projects. Utilization of any and all rights derived under this lease by the mineral lessee, its agents, successors or assigns, shall not interfere with nor hinder the reasonable surface use by the Department of Natural Resources, its Offices or Commissions, as herein above reserved.

Applicant: Jerel Exploration, Inc.

Bidder	Cash Payment	Price/Acre	Rental	Oil	Gas	Other





ST MARY PARISH

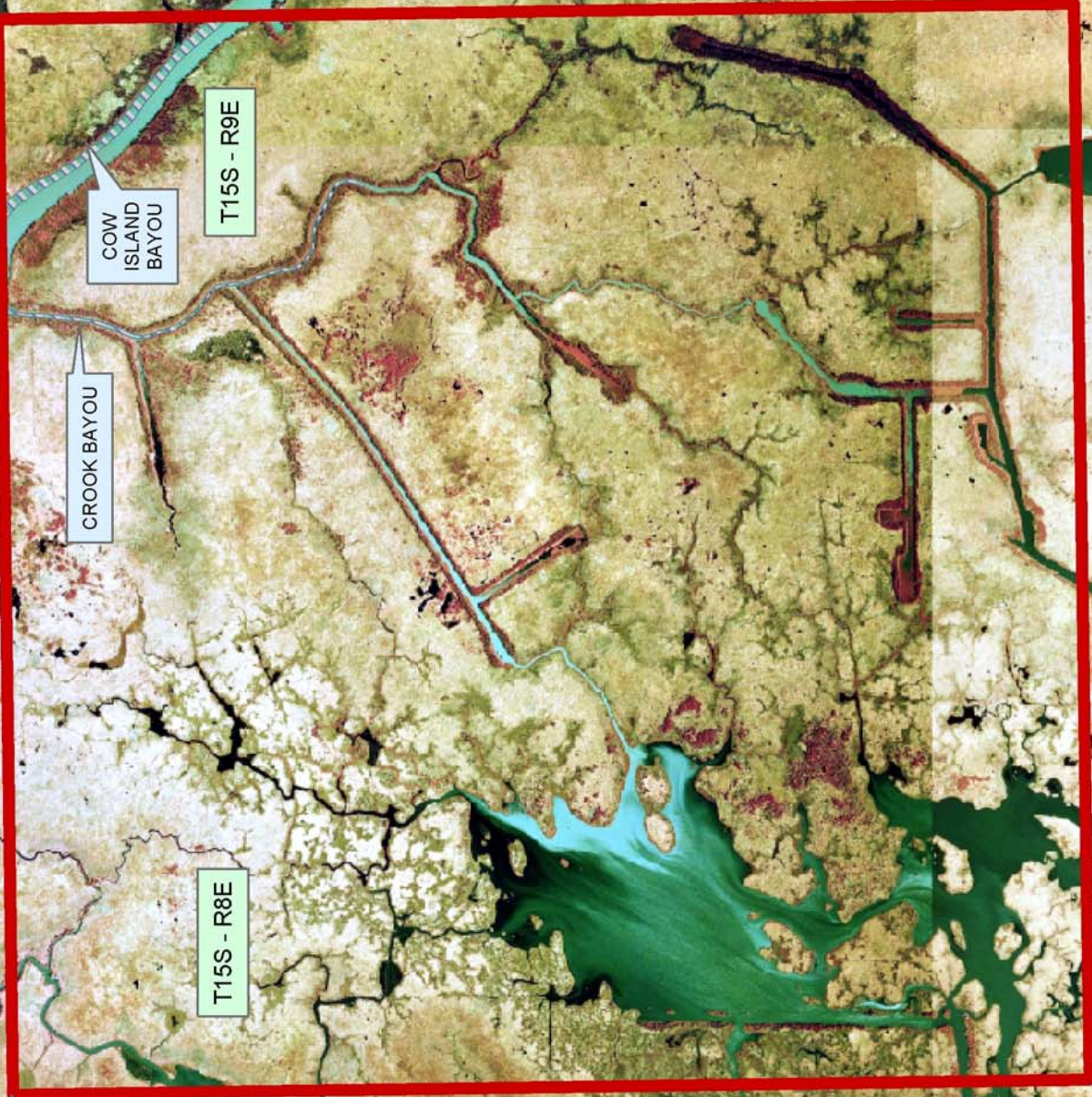
CROOK BAYOU

COW ISLAND BAYOU

T15S - R9E

T15S - R8E

P.O.B.  
X=1,912,180.22  
Y=388,271.93





**TRACT 36661 - St. Mary Parish, Louisiana**

All of the lands now or formerly constituting the beds and bottoms of all water bodies of every nature and description the title of which vests in the State of Louisiana, together with all islands arising therein and other lands formed by accretion or by reliction, where allowed by law, excepting tax adjudicated lands, and not presently under mineral lease on September 8, 2004, situated in St. Mary Parish, Louisiana, and more particularly described as follows: Beginning at a point having Coordinates of X = 1,949,140.22 and Y = 369,791.93; thence West 18,480.00 feet to a point having Coordinates of X = 1,930,660.22 and Y = 369,791.93; thence North 18,480.00 feet to a point having Coordinates of X = 1,930,660.22 and Y = 388,271.93; thence East 18,480.00 feet to a point having Coordinates of X = 1,949,140.22 and Y = 388,271.93; thence South 18,480.00 feet to the point of beginning, containing approximately **14 acres**, all as more particularly outlined on a plat on file in the Office of Mineral Resources, Department of Natural Resources. All bearings, distances and coordinates are based on Louisiana Coordinate System of 1927, (North or South Zone), where applicable.

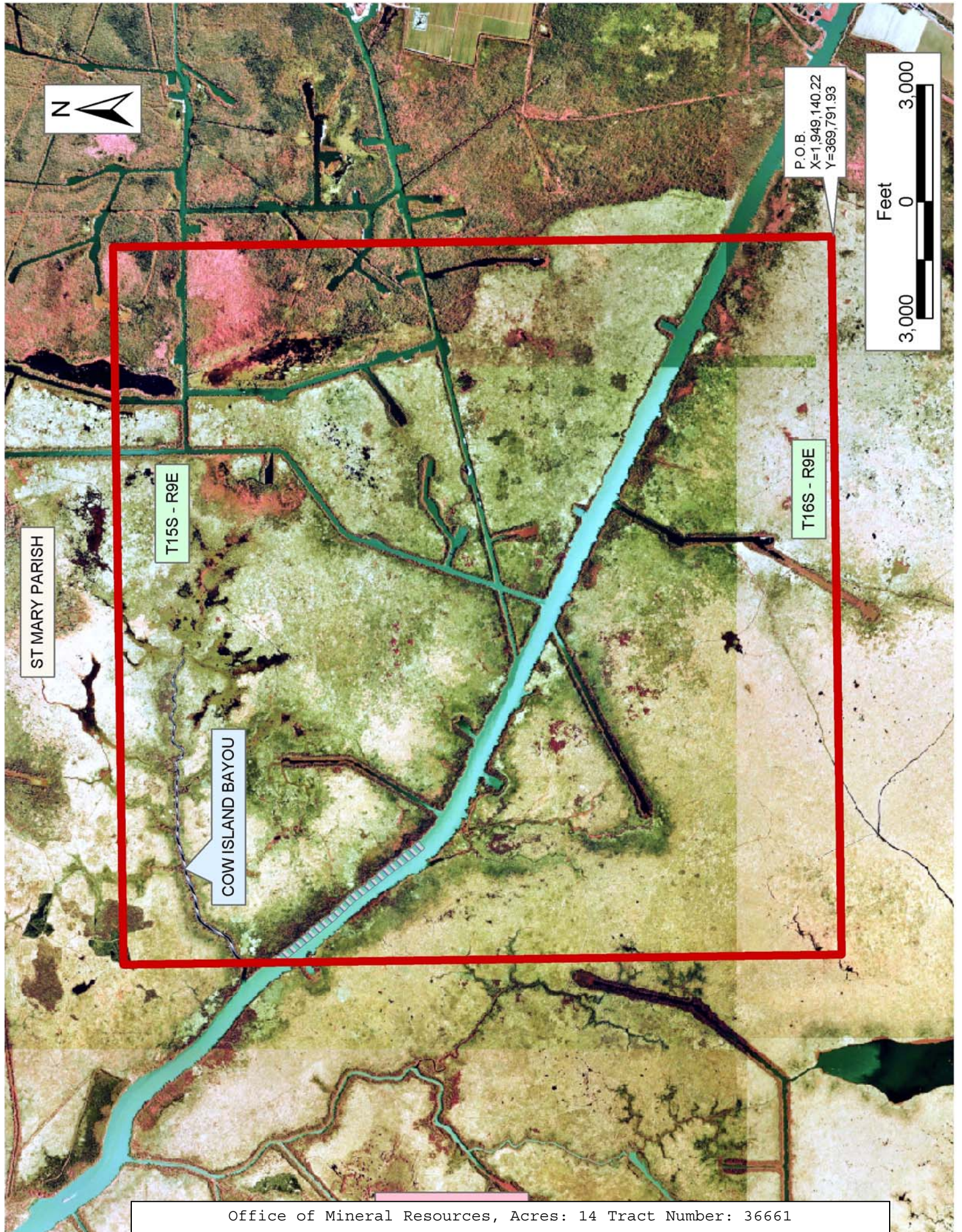
NOTE: The above description of the Tract nominated for lease has been provided and corrected, where required, exclusively by the nomination party. Any mineral lease selected from this Tract and awarded by the Louisiana State Mineral Board shall be without warranty of any kind, either express, implied, or statutory, including, but not limited to, the implied warranties of merchantability and fitness for a particular purpose. Should the mineral lease awarded by the Louisiana State Mineral Board be subsequently modified, cancelled or abrogated due to the existence of conflicting leases, operating agreements, private claims or other future obligations or conditions which may affect all or any portion of the leased Tract, it shall not relieve the Lessee of the obligation to pay any bonus due thereon to the Louisiana State Mineral Board, nor shall the Louisiana State Mineral Board be obligated to refund any consideration paid by the Lessor prior to such modification, cancellation, or abrogation, including, but not limited to, bonuses, rentals and royalties.

NOTE: The State of Louisiana does hereby reserve, and this lease shall be subject to, the imprescriptible right of surface use in the nature of a servitude in favor of the Department of Natural Resources, including its Offices and Commissions, for the sole purpose of implementing, constructing, servicing and maintaining approved coastal zone management and/or restoration projects. Utilization of any and all rights derived under this lease by the mineral lessee, its agents, successors or assigns, shall not interfere with nor hinder the reasonable surface use by the Department of Natural Resources, its Offices or Commissions, as herein above reserved.

Applicant: Jerel Exploration, Inc.

Bidder	Cash Payment	Price/Acre	Rental	Oil	Gas	Other





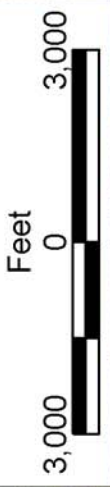
ST MARY PARISH

T15S - R9E

COW ISLAND BAYOU

T16S - R9E

P.O.B.  
X=1,949,140.22  
Y=369,791.93





**TRACT 36662 - St. Mary Parish, Louisiana**

All of the lands now or formerly constituting the beds and bottoms of all water bodies of every nature and description the title of which vests in the State of Louisiana, together with all islands arising therein and other lands formed by accretion or by reliction, where allowed by law, excepting tax adjudicated lands, and not presently under mineral lease on September 8, 2004, situated in St. Mary Parish, Louisiana, and more particularly described as follows: Beginning at a point having Coordinates of X = 1,912,180.22 and Y = 388,271.93; thence South 18,480.00 feet to a point having Coordinates of X = 1,912,180.22 and Y = 369,791.93; thence West 3,882.22 feet to a point on the East boundary of State Lease No. 13470 having Coordinates of X = 1,908,298.00 and Y = 369,791.93; thence North 781.56 feet along said East boundary of said State Lease No. 13470 to its Northeast corner, also being a point on the South boundary of State Lease No. 5176, as amended, having Coordinates of X = 1,908,298.00 and Y = 370,573.49; thence along the boundaries of said State Lease No. 5176, the following courses: South 73 degrees 52 minutes 35 seconds East 1,255.38 feet to its Southeast corner having Coordinates of X = 1,909,504.00 and Y = 370,224.86; North 4,107.77 feet to its Northeast corner having Coordinates of X = 1,909,504.00 and Y = 374,332.63; West 6,000.00 feet to its Northwest corner having Coordinates of X = 1,903,504.00 and Y = 374,332.63; and South 3,231.84 feet to its Southwest corner, also being a point on the North boundary of State Lease No. 8091, as amended, having Coordinates of X = 1,903,504.00 and Y = 371,100.79; thence West 563.78 feet along said North boundary of said State Lease No. 8091, to a point having Coordinates of X = 1,902,940.22 and Y = 371,100.79; thence North 17,171.14 feet to a point having Coordinates of X = 1,902,940.22 and Y = 388,271.93; thence East 9,240.00 feet to the point of beginning, containing approximately **2,139 acres**, all as more particularly outlined on a plat on file in the Office of Mineral Resources, Department of Natural Resources. All bearings, distances and coordinates are based on Louisiana Coordinate System of 1927, (North or South Zone), where applicable.

NOTE: The above description of the Tract nominated for lease has been provided and corrected, where required, exclusively by the nomination party. Any mineral lease selected from this Tract and awarded by the Louisiana State Mineral Board shall be without warranty of any kind, either express, implied, or statutory, including, but not limited to, the implied warranties of merchantability and fitness for a particular purpose. Should the mineral lease awarded by the Louisiana State Mineral Board be subsequently modified, cancelled or abrogated due to the existence of conflicting leases, operating agreements, private claims or other future obligations or conditions which may affect all or any portion of the leased Tract, it shall not relieve the Lessee of the obligation to pay any bonus due thereon to the Louisiana State Mineral Board, nor shall the Louisiana State Mineral Board be obligated to refund any consideration paid by the Lessor prior to such modification, cancellation, or abrogation, including, but not limited to, bonuses, rentals and royalties.

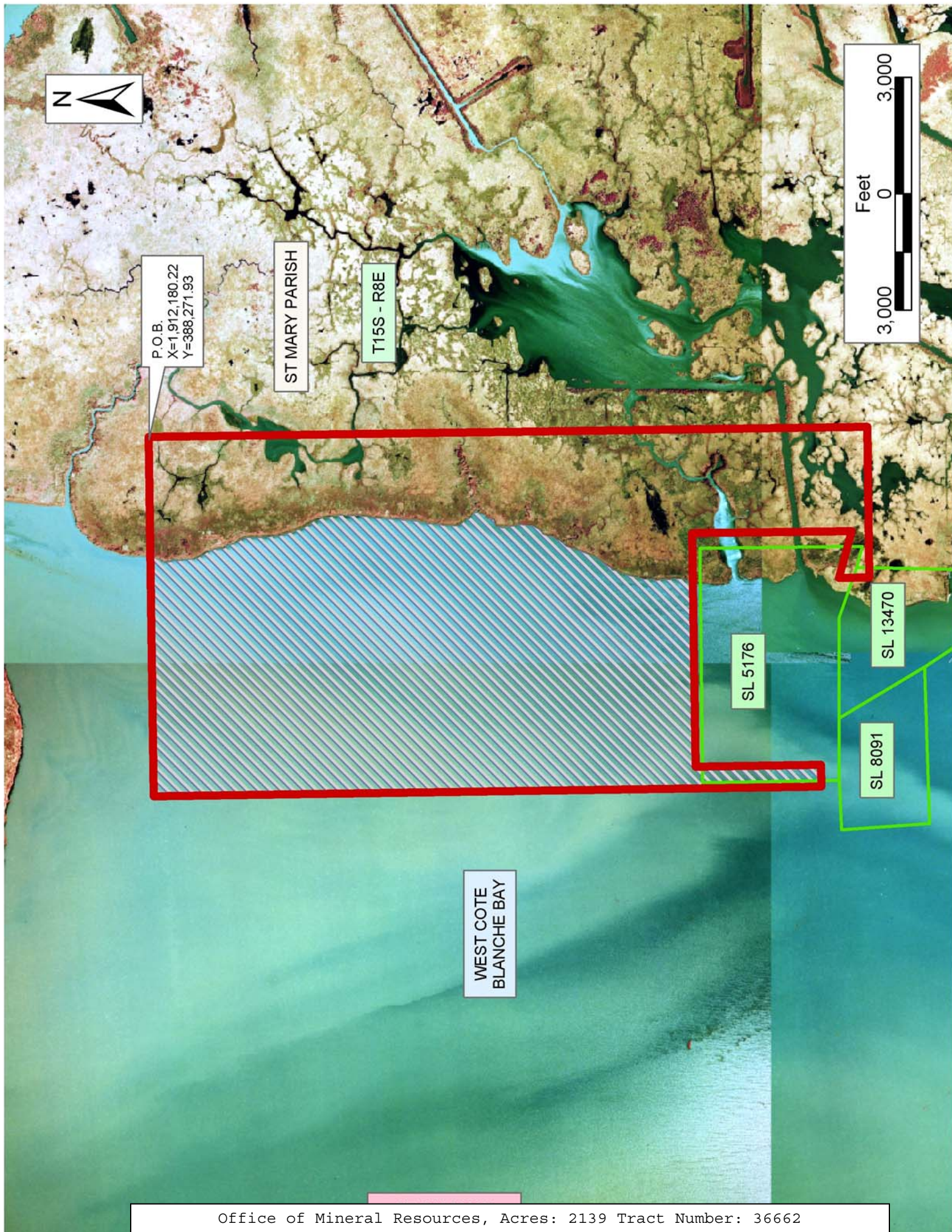
NOTE: The State of Louisiana does hereby reserve, and this lease shall be subject to, the imprescriptible right of surface use in the nature of a servitude in favor of the Department of Natural Resources, including its Offices and Commissions, for the sole purpose of implementing, constructing, servicing and maintaining approved coastal zone management and/or restoration projects. Utilization of any and all rights derived under this lease by the mineral lessee, its agents, successors or assigns, shall not interfere with nor hinder the reasonable surface use by the Department of Natural Resources, its Offices or Commissions, as herein above reserved.

NOTE: The Department of Wildlife and Fisheries has designated certain areas in the coastal waters of the State of Louisiana as Oyster Seed Bed Areas. The exact location of those Seed Bed Areas must be obtained from the Department of Wildlife and Fisheries and any work done under a mineral lease from the State of Louisiana may necessarily be conducted in conformity with the rules and regulations promulgated by the said Department of Wildlife and Fisheries for Oyster Seed Bed Areas.

Applicant: Jerel Exploration, Inc.

Bidder	Cash Payment	Price/Acre	Rental	Oil	Gas	Other





P.O.B.  
X=1,912,180.22  
Y=388,271.93

ST MARY PARISH

T15S - R8E

Feet  
3,000 0 3,000

SL 5176

SL 13470

SL 8091

WEST COTE  
BLANCHE BAY



**TRACT 36663 - St. Mary Parish, Louisiana**

All of the lands now or formerly constituting the beds and bottoms of all water bodies of every nature and description the title of which vests in the State of Louisiana, together with all islands arising therein and other lands formed by accretion or by reliction, where allowed by law, excepting tax adjudicated lands, and not presently under mineral lease on September 8, 2004, situated in St. Mary Parish, Louisiana, and more particularly described as follows: Beginning at a point having Coordinates of X = 1,986,100.22 and Y = 367,000.00; Thence West 18,480.00 feet to a point having Coordinates of X = 1,967,620.22 and Y = 367,000.00; Thence North 18,480.00 feet to a point having Coordinates of X = 1,967,620.22 and Y = 385,480.00; Thence East 12,179.78 feet to the Northwest corner of State Lease No. 17647 having Coordinates of X = 1,979,800.00 and Y = 385,480.00; Thence South 7,963.31 feet along the West boundary of said State Lease No. 17647 to its Southwest corner having Coordinates of X = 1,979,800.00 and Y = 377,516.69; Thence East 6,300.22 feet along the South boundary of said State Lease No. 17647 to a point having Coordinates of X = 1,986,100.22 and Y = 377,516.69; Thence South 10,516.69 feet to the point of beginning, containing approximately **8 acres**, all as more particularly outlined on a plat on file in the Office of Mineral Resources, Department of Natural Resources. All bearings, distances and coordinates are based on Louisiana Coordinate System of 1927, (North or South Zone), where applicable.

NOTE: The above description of the Tract nominated for lease has been provided and corrected, where required, exclusively by the nomination party. Any mineral lease selected from this Tract and awarded by the Louisiana State Mineral Board shall be without warranty of any kind, either express, implied, or statutory, including, but not limited to, the implied warranties of merchantability and fitness for a particular purpose. Should the mineral lease awarded by the Louisiana State Mineral Board be subsequently modified, cancelled or abrogated due to the existence of conflicting leases, operating agreements, private claims or other future obligations or conditions which may affect all or any portion of the leased Tract, it shall not relieve the Lessee of the obligation to pay any bonus due thereon to the Louisiana State Mineral Board, nor shall the Louisiana State Mineral Board be obligated to refund any consideration paid by the Lessor prior to such modification, cancellation, or abrogation, including, but not limited to, bonuses, rentals and royalties.

NOTE: The State of Louisiana does hereby reserve, and this lease shall be subject to, the imprescriptible right of surface use in the nature of a servitude in favor of the Department of Natural Resources, including its Offices and Commissions, for the sole purpose of implementing, constructing, servicing and maintaining approved coastal zone management and/or restoration projects. Utilization of any and all rights derived under this lease by the mineral lessee, its agents, successors or assigns, shall not interfere with nor hinder the reasonable surface use by the

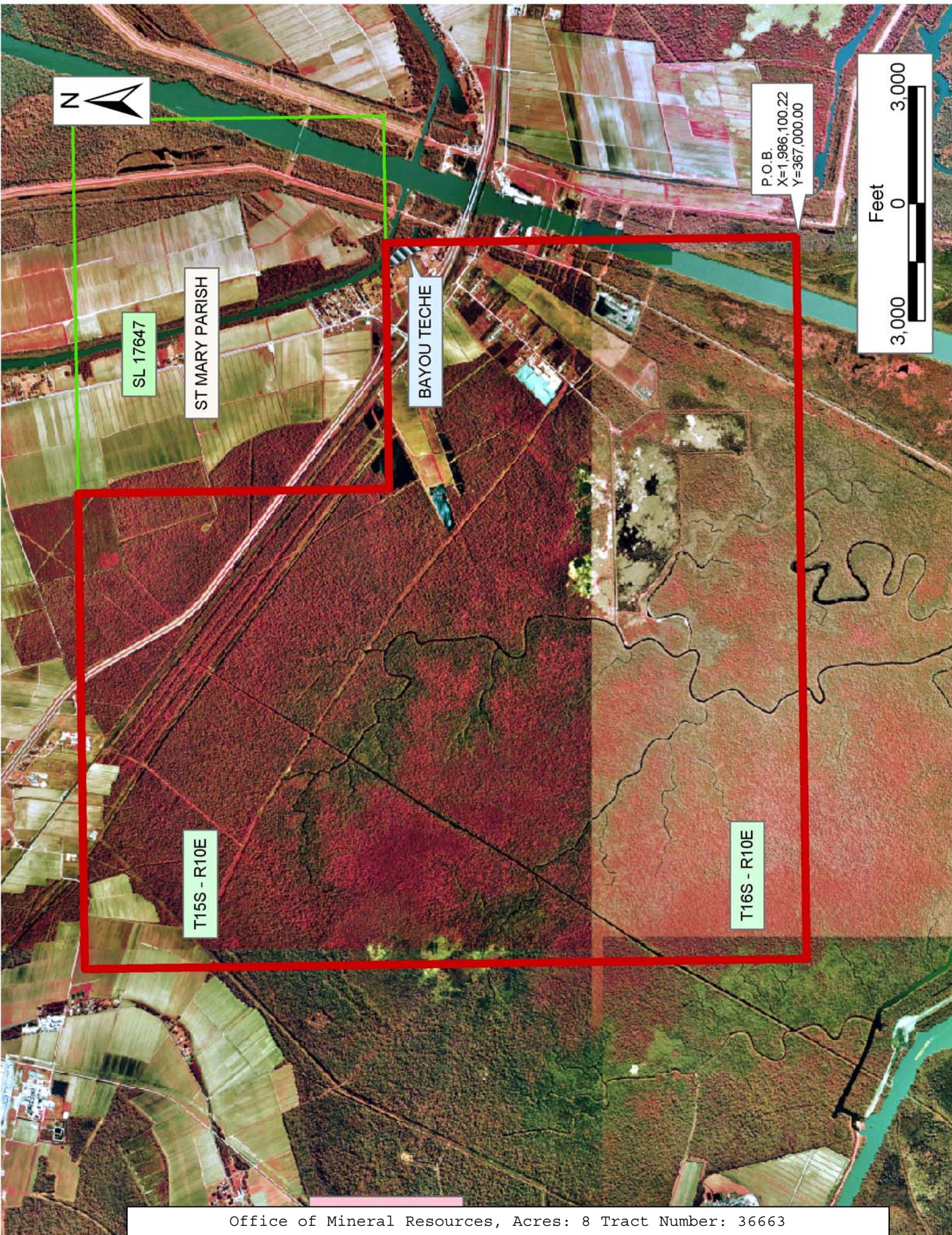


Department of Natural Resources, its Offices or Commissions, as herein above reserved.

Applicant: Jerel Exploration, Inc.

Bidder	Cash Payment	Price/Acre	Rental	Oil	Gas	Other







**TRACT 36664 - Jefferson and Lafourche Parishes, Louisiana**

All of the lands now or formerly constituting the beds and bottoms of all water bodies of every nature and description the title of which vests in the State of Louisiana, together with all islands arising therein and other lands formed by accretion or by reliction, where allowed by law, excepting tax adjudicated lands, and not presently under mineral lease on September 8, 2004, situated in Jefferson and Lafourche Parishes, Louisiana, and more particularly described as follows: Beginning at a point having Coordinates of X = 2,370,313.00 and Y = 370,252.00; thence South 26 degrees 52 minutes 44 seconds East 10,282.94 feet to a point having Coordinates of X = 2,374,962.00 and Y = 361,080.00; thence South 00 degrees 28 minutes 48 seconds East 9,308.33 feet to a point having Coordinates of X = 2,375,040.00 and Y = 351,772.00; thence West 2,311.00 feet to the Southeast corner of State Lease No. 18076, having Coordinates of X = 2,372,729.00 and Y = 351,772.00; thence along the boundaries of said State Lease No. 18076 the following courses: North 2,344.00 feet to its Northeast corner having Coordinates of X = 2,372,729.00 and Y = 354,116.00; West 3,159.00 feet to its Northwest corner having Coordinates of X = 2,369,570.00 and Y = 354,116.00; and South 2,344.00 feet to its Southwest corner having Coordinates of X = 2,369,570.00 and Y = 351,772.00; thence West 3,354.00 feet to a point having Coordinates of X = 2,366,216.00 and Y = 351,772.00; thence North 02 degrees 12 minutes 10 seconds West 9,157.77 feet to a point having Coordinates of X = 2,365,864.00 and Y = 360,923.00; thence North 86 degrees 01 minutes 59 seconds East 2,269.44 feet to a point having Coordinates of X = 2,368,128.00 and Y = 361,080.00; thence North 01 degrees 02 minutes 43 seconds East 2,302.38 feet to a point having Coordinates of X = 2,368,170.00 and Y = 363,382.00; thence South 89 degrees 01 minutes 16 seconds East 2,224.32 feet to a point having Coordinates of X = 2,370,394.00 and Y = 363,344.00; thence North 00 degrees 40 minutes 18 seconds West 6,908.47 feet to the point of beginning, **LESS AND EXCEPT** any portion of State Lease No. 402, as amended, which may lie within the above described tract, containing approximately **2,050 acres**, all as more particularly outlined on a plat on file in the Office of Mineral Resources, Department of Natural Resources. All bearings, distances and coordinates are based on Louisiana Coordinate System of 1927, (North or South Zone), where applicable.

NOTE: The above description of the Tract nominated for lease has been provided and corrected, where required, exclusively by the nomination party. Any mineral lease selected from this Tract and awarded by the Louisiana State Mineral Board shall be without warranty of any kind, either express, implied, or statutory, including, but not limited to, the implied warranties of merchantability and fitness for a particular purpose. Should the mineral lease awarded by the Louisiana State Mineral Board be subsequently modified, cancelled or abrogated due to the existence of conflicting leases, operating agreements, private claims or other future obligations or conditions which may affect all or any portion of the leased Tract, it shall not relieve the Lessee of the obligation to

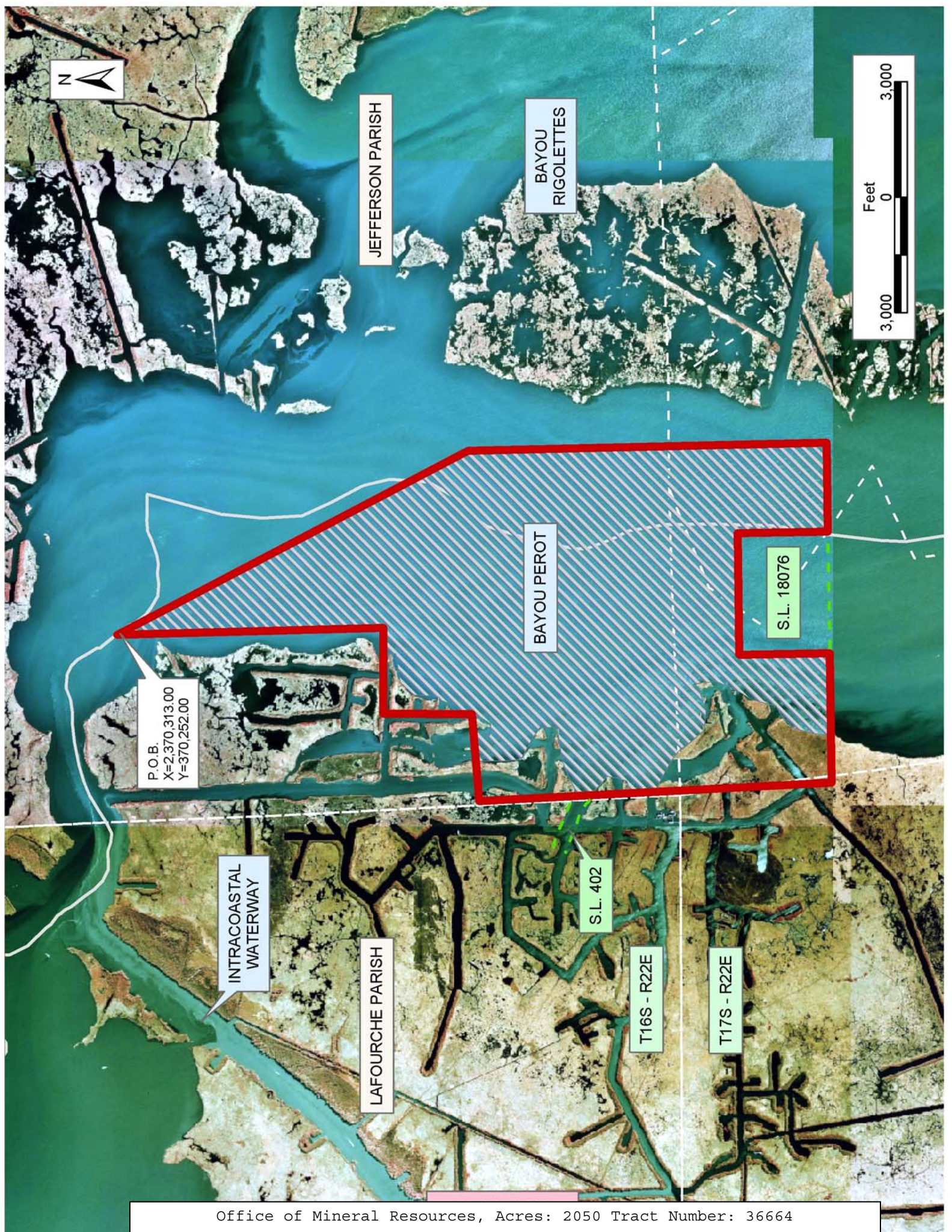
pay any bonus due thereon to the Louisiana State Mineral Board, nor shall the Louisiana State Mineral Board be obligated to refund any consideration paid by the Lessor prior to such modification, cancellation, or abrogation, including, but not limited to, bonuses, rentals and royalties.

NOTE: The State of Louisiana does hereby reserve, and this lease shall be subject to, the imprescriptible right of surface use in the nature of a servitude in favor of the Department of Natural Resources, including its Offices and Commissions, for the sole purpose of implementing, constructing, servicing and maintaining approved coastal zone management and/or restoration projects. Utilization of any and all rights derived under this lease by the mineral lessee, its agents, successors or assigns, shall not interfere with nor hinder the reasonable surface use by the Department of Natural Resources, its Offices or Commissions, as herein above reserved.

Applicant: Energy Partners, Inc.

Bidder	Cash Payment	Price/Acre	Rental	Oil	Gas	Other





P.O.B.  
X=2,370,313.00  
Y=370,252.00

JEFFERSON PARISH

BAYOU RIGOLETTES

BAYOU PEROT

S.L. 18076

INTRACOASTAL WATERWAY

LAFOURCHE PARISH

S.L. 402

T16S - R22E

T17S - R22E



**TRACT 36665 - St. Mary Parish, Louisiana**

All of the lands now or formerly constituting the beds and bottoms of all water bodies of every nature and description the title of which vests in the State of Louisiana, together with all islands arising therein and other lands formed by accretion or by reliction, where allowed by law, excepting tax adjudicated lands, and not presently under mineral lease on September 8, 2004, situated in St. Mary Parish, Louisiana, and more particularly described as follows: Beginning at a point having Coordinates of X = 1,949,140.22 and Y = 369,791.93; thence East 18,480.00 feet to a point having Coordinates of X = 1,967,620.22 and Y = 369,791.93; thence South 10,547.95 feet to a point having Coordinates of X = 1,967,620.22 and Y = 359,243.98; thence West 18,480.00 feet to a point having Coordinates of X = 1,949,140.22 and Y = 359,243.98; thence North 10,547.95 feet to the point of beginning, containing approximately **39 acres**, all as more particularly outlined on a plat on file in the Office of Mineral Resources, Department of Natural Resources. All bearings, distances and coordinates are based on Louisiana Coordinate System of 1927, (North or South Zone), where applicable.

NOTE: The above description of the Tract nominated for lease has been provided and corrected, where required, exclusively by the nomination party. Any mineral lease selected from this Tract and awarded by the Louisiana State Mineral Board shall be without warranty of any kind, either express, implied, or statutory, including, but not limited to, the implied warranties of merchantability and fitness for a particular purpose. Should the mineral lease awarded by the Louisiana State Mineral Board be subsequently modified, cancelled or abrogated due to the existence of conflicting leases, operating agreements, private claims or other future obligations or conditions which may affect all or any portion of the leased Tract, it shall not relieve the Lessee of the obligation to pay any bonus due thereon to the Louisiana State Mineral Board, nor shall the Louisiana State Mineral Board be obligated to refund any consideration paid by the Lessor prior to such modification, cancellation, or abrogation, including, but not limited to, bonuses, rentals and royalties.

NOTE: The State of Louisiana does hereby reserve, and this lease shall be subject to, the imprescriptible right of surface use in the nature of a servitude in favor of the Department of Natural Resources, including its Offices and Commissions, for the sole purpose of implementing, constructing, servicing and maintaining approved coastal zone management and/or restoration projects. Utilization of any and all rights derived under this lease by the mineral lessee, its agents, successors or assigns, shall not interfere with nor hinder the reasonable surface use by the Department of Natural Resources, its Offices or Commissions, as herein above reserved.

Applicant: Jerel Exploration, Inc.

Bidder	Cash Payment	Price/Acre	Rental	Oil	Gas	Other





ST MARY PARISH

T16S - R10E

BAYOU BLUE

T16S - R9E

P.O.B.  
X=1,949,140.22  
Y=369,791.93



**TRACT 36666 - St. Mary Parish, Louisiana**

All of the lands now or formerly constituting the beds and bottoms of all water bodies of every nature and description the title of which vests in the State of Louisiana, together with all islands arising therein and other lands formed by accretion or by reliction, where allowed by law, excepting tax adjudicated lands, and not presently under mineral lease on September 8, 2004, situated in St. Mary Parish, Louisiana, and more particularly described as follows: Beginning at a point having Coordinates of X = 1,912,180.22 and Y = 369,791.93; thence East 18,480.00 feet to a point having Coordinates of X = 1,930,660.22 and Y = 369,791.93; thence South 10,547.95 feet to a point having Coordinates of X = 1,930,660.22 and Y = 359,243.98; thence West 18,480.00 feet to a point having Coordinates of X = 1,912,180.22 and Y = 359,243.98; thence North 10,547.95 feet to the point of beginning, containing approximately **80 acres**, all as more particularly outlined on a plat on file in the Office of Mineral Resources, Department of Natural Resources. All bearings, distances and coordinates are based on Louisiana Coordinate System of 1927, (North or South Zone), where applicable.

NOTE: The above description of the Tract nominated for lease has been provided and corrected, where required, exclusively by the nomination party. Any mineral lease selected from this Tract and awarded by the Louisiana State Mineral Board shall be without warranty of any kind, either express, implied, or statutory, including, but not limited to, the implied warranties of merchantability and fitness for a particular purpose. Should the mineral lease awarded by the Louisiana State Mineral Board be subsequently modified, cancelled or abrogated due to the existence of conflicting leases, operating agreements, private claims or other future obligations or conditions which may affect all or any portion of the leased Tract, it shall not relieve the Lessee of the obligation to pay any bonus due thereon to the Louisiana State Mineral Board, nor shall the Louisiana State Mineral Board be obligated to refund any consideration paid by the Lessor prior to such modification, cancellation, or abrogation, including, but not limited to, bonuses, rentals and royalties.

NOTE: The State of Louisiana does hereby reserve, and this lease shall be subject to, the imprescriptible right of surface use in the nature of a servitude in favor of the Department of Natural Resources, including its Offices and Commissions, for the sole purpose of implementing, constructing, servicing and maintaining approved coastal zone management and/or restoration projects. Utilization of any and all rights derived under this lease by the mineral lessee, its agents, successors or assigns, shall not interfere with nor hinder the reasonable surface use by the Department of Natural Resources, its Offices or Commissions, as herein above reserved.



Applicant: Jerel Exploration, Inc.

Bidder	Cash Payment	Price/Acre	Rental	Oil	Gas	Other





ST MARY PARISH

T16S - R9E

BAYOU LONG

P.O.B.  
X=1,912,180.22  
Y=369,791.93



**TRACT 36667 - St. Mary Parish, Louisiana**

All of the lands now or formerly constituting the beds and bottoms of all water bodies of every nature and description the title of which vests in the State of Louisiana, together with all islands arising therein and other lands formed by accretion or by reliction, where allowed by law, excepting tax adjudicated lands, and not presently under mineral lease on September 8, 2004, situated in St. Mary Parish, Louisiana, and more particularly described as follows: Beginning at a point having Coordinates of X = 1,912,180.22 and Y = 369,791.93; thence South 10,547.95 feet to a point having Coordinates of X = 1,912,180.22 and Y = 359,243.98; thence West 9,180.22 feet to a point having Coordinates of X = 1,903,000.00 and Y = 359,243.98; thence North 6,399.37 feet to a point on the South boundary of State Lease No. 9410, as amended, having Coordinates of X = 1,903,000.00 and Y = 365,643.35; thence South 87 degrees 05 minutes 15 seconds East 4,088.63 feet along said South boundary of said State Lease No. 9410, to its Southeast corner, also being a point on the West boundary of State Lease No. 17290 having Coordinates of X = 1,907,083.35 and Y = 365,435.61; thence along the West, South, East and North boundaries of said State lease No. 17290 the following courses: South 00 degrees 12 minutes 34 seconds West 3,235.63 feet to its Southwest corner having Coordinates of X = 1,907,071.52 and Y = 362,200.00; East 1,528.48 feet to its Southeast corner having Coordinates of X = 1,908,600.00 and Y = 362,200.00; North 4,045.00 feet to its Northeast corner having Coordinates of X = 1,908,600.00 and Y = 366,245.00; and West 302.00 feet to the Southeast corner of State Lease No. 13470 having Coordinates of X = 1,908,298.00 and Y = 366,245.00; thence North 3,546.93 feet along the East boundary of said State Lease No. 13470 to a point having Coordinates of X = 1,908,298.00 and Y = 369,791.93; thence East 3,882.22 feet to the point of beginning, **LESS AND EXCEPT** that portion, if any, of State Lease No. 9410, as amended, that may lie within the above described tract, containing approximately **596 acres**, all as more particularly outlined on a plat on file in the Office of Mineral Resources, Department of Natural Resources. All bearings, distances and coordinates are based on Louisiana Coordinate System of 1927, (North or South Zone), where applicable.

NOTE: The above description of the Tract nominated for lease has been provided and corrected, where required, exclusively by the nomination party. Any mineral lease selected from this Tract and awarded by the Louisiana State Mineral Board shall be without warranty of any kind, either express, implied, or statutory, including, but not limited to, the implied warranties of merchantability and fitness for a particular purpose. Should the mineral lease awarded by the Louisiana State Mineral Board be subsequently modified, cancelled or abrogated due to the existence of conflicting leases, operating agreements, private claims or other future obligations or conditions which may affect all or any portion of the leased Tract, it shall not relieve the Lessee of the obligation to pay any bonus due thereon to the Louisiana State Mineral Board, nor shall the Louisiana State Mineral Board be obligated to refund any consideration

paid by the Lessor prior to such modification, cancellation, or abrogation, including, but not limited to, bonuses, rentals and royalties.

NOTE: The State of Louisiana does hereby reserve, and this lease shall be subject to, the imprescriptible right of surface use in the nature of a servitude in favor of the Department of Natural Resources, including its Offices and Commissions, for the sole purpose of implementing, constructing, servicing and maintaining approved coastal zone management and/or restoration projects. Utilization of any and all rights derived under this lease by the mineral lessee, its agents, successors or assigns, shall not interfere with nor hinder the reasonable surface use by the Department of Natural Resources, its Offices or Commissions, as herein above reserved.

NOTE: The Department of Wildlife and Fisheries has designated certain areas in the coastal waters of the State of Louisiana as Oyster Seed Bed Areas. The exact location of those Seed Bed Areas must be obtained from the Department of Wildlife and Fisheries and any work done under a mineral lease from the State of Louisiana may necessarily be conducted in conformity with the rules and regulations promulgated by the said Department of Wildlife and Fisheries for Oyster Seed Bed Areas.

Applicant: Jerel Exploration, Inc

Bidder	Cash Payment	Price/Acre	Rental	Oil	Gas	Other





P.O.B.  
X=1,912,180.22  
Y=369,791.93



SL 5176

SL 8091

ST MARY PARISH

SL 9410

SL 13470

SL 17290

**TRACT 36668 - St. Mary Parish, Louisiana**

All of the lands now or formerly constituting the beds and bottoms of all water bodies of every nature and description the title of which vests in the State of Louisiana, together with all islands arising therein and other lands formed by accretion or by reliction, where allowed by law, excepting tax adjudicated lands, and not presently under mineral lease on September 8, 2004, situated in St. Mary Parish, Louisiana, and more particularly described as follows: Beginning at a point having Coordinates of X = 1,986,100.22 and Y = 367,000.00; Thence South 18,480.00 feet to a point having Coordinates of X = 1,986,100.22 and Y = 348,520.00; Thence West 18,480.00 feet to a point having Coordinates of X = 1,967,620.22 and Y = 348,520.00; Thence North 18,480.00 feet to a point having Coordinates of X = 1,967,620.22 and Y = 367,000.00; Thence East 18,480.00 feet to the point of beginning, containing approximately **667 acres**, all as more particularly outlined on a plat on file in the Office of Mineral Resources, Department of Natural Resources. All bearings, distances and coordinates are based on Louisiana Coordinate System of 1927, (North or South Zone), where applicable.

NOTE: The above description of the Tract nominated for lease has been provided and corrected, where required, exclusively by the nomination party. Any mineral lease selected from this Tract and awarded by the Louisiana State Mineral Board shall be without warranty of any kind, either express, implied, or statutory, including, but not limited to, the implied warranties of merchantability and fitness for a particular purpose. Should the mineral lease awarded by the Louisiana State Mineral Board be subsequently modified, cancelled or abrogated due to the existence of conflicting leases, operating agreements, private claims or other future obligations or conditions which may affect all or any portion of the leased Tract, it shall not relieve the Lessee of the obligation to pay any bonus due thereon to the Louisiana State Mineral Board, nor shall the Louisiana State Mineral Board be obligated to refund any consideration paid by the Lessor prior to such modification, cancellation, or abrogation, including, but not limited to, bonuses, rentals and royalties.

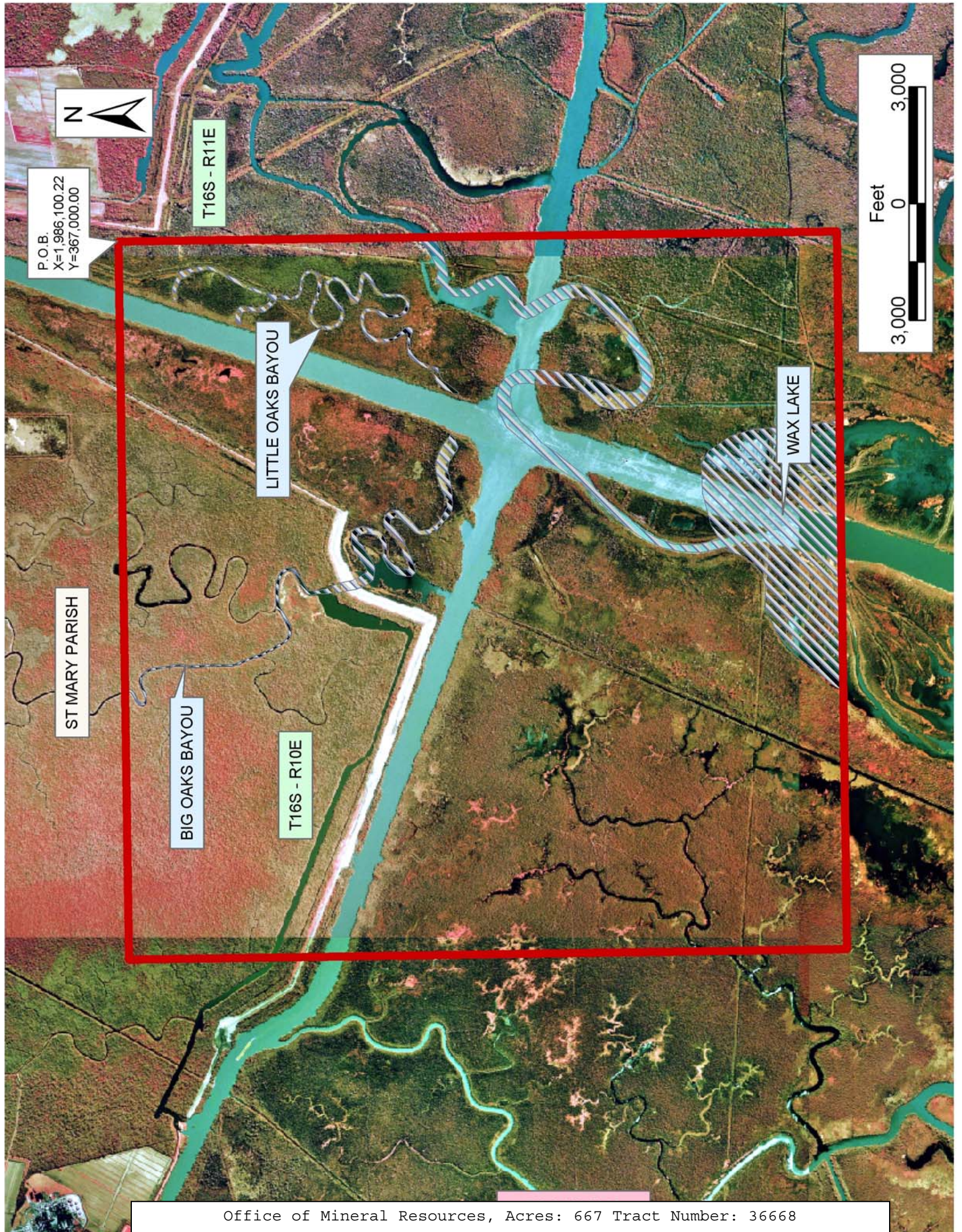
NOTE: The State of Louisiana does hereby reserve, and this lease shall be subject to, the imprescriptible right of surface use in the nature of a servitude in favor of the Department of Natural Resources, including its Offices and Commissions, for the sole purpose of implementing, constructing, servicing and maintaining approved coastal zone management and/or restoration projects. Utilization of any and all rights derived under this lease by the mineral lessee, its agents, successors or assigns, shall not interfere with nor hinder the reasonable surface use by the Department of Natural Resources, its Offices or Commissions, as herein above reserved.



Applicant: Jerel Exploration, Inc.

Bidder	Cash Payment	Price/Acre	Rental	Oil	Gas	Other





P.O.B.  
X=1,986,100.22  
Y=367,000.00



T16S - R11E

LITTLE OAKS BAYOU

ST MARY PARISH

BIG OAKS BAYOU

T16S - R10E

WAX LAKE





**TRACT 36669 - St. Mary Parish, Louisiana**

All of the lands now or formerly constituting the beds and bottoms of all water bodies of every nature and description the title of which vests in the State of Louisiana, together with all islands arising therein and other lands formed by accretion or by reliction, where allowed by law, excepting tax adjudicated lands, and not presently under mineral lease on September 8, 2004, situated in St. Mary Parish, Louisiana, and more particularly described as follows: Beginning at a point having Coordinates of X = 1,967,620.22 and Y = 359,243.98; Thence South 12,493.98 feet to a point having Coordinates of X = 1,967,620.22 and Y = 346,750.00; Thence West approximately 14,971 feet to a point on the East boundary of Operating Agreement 0241 having a coordinate of Y = 346,750.00; Thence along the boundaries of said Operating Agreement 0241 the following courses: Northerly along its East boundary to its Northeast corner; Southwesterly along its Northern boundaries to its Northwest corner; Southerly along its West boundary to a point having a coordinate of Y = 346,750.00; Thence West approximately 667 feet to a point having Coordinates of X = 1,949,140.22 and Y = 346,750.00; Thence North 12,493.98 feet to a point having Coordinates of X = 1,949,140.22 and Y = 359,243.98; Thence East 18,480.00 feet to the point of beginning, **LESS AND EXCEPT** any portion of Operating Agreement 0241 and Operating Agreement 043, which may lie within the above described tract, containing approximately **159 acres**, all as more particularly outlined on a plat on file in the Office of Mineral Resources, Department of Natural Resources. All bearings, distances and coordinates are based on Louisiana Coordinate System of 1927, (North or South Zone), where applicable.

NOTE: The above description of the Tract nominated for lease has been provided and corrected, where required, exclusively by the nomination party. Any mineral lease selected from this Tract and awarded by the Louisiana State Mineral Board shall be without warranty of any kind, either express, implied, or statutory, including, but not limited to, the implied warranties of merchantability and fitness for a particular purpose. Should the mineral lease awarded by the Louisiana State Mineral Board be subsequently modified, cancelled or abrogated due to the existence of conflicting leases, operating agreements, private claims or other future obligations or conditions which may affect all or any portion of the leased Tract, it shall not relieve the Lessee of the obligation to pay any bonus due thereon to the Louisiana State Mineral Board, nor shall the Louisiana State Mineral Board be obligated to refund any consideration paid by the Lessor prior to such modification, cancellation, or abrogation, including, but not limited to, bonuses, rentals and royalties.

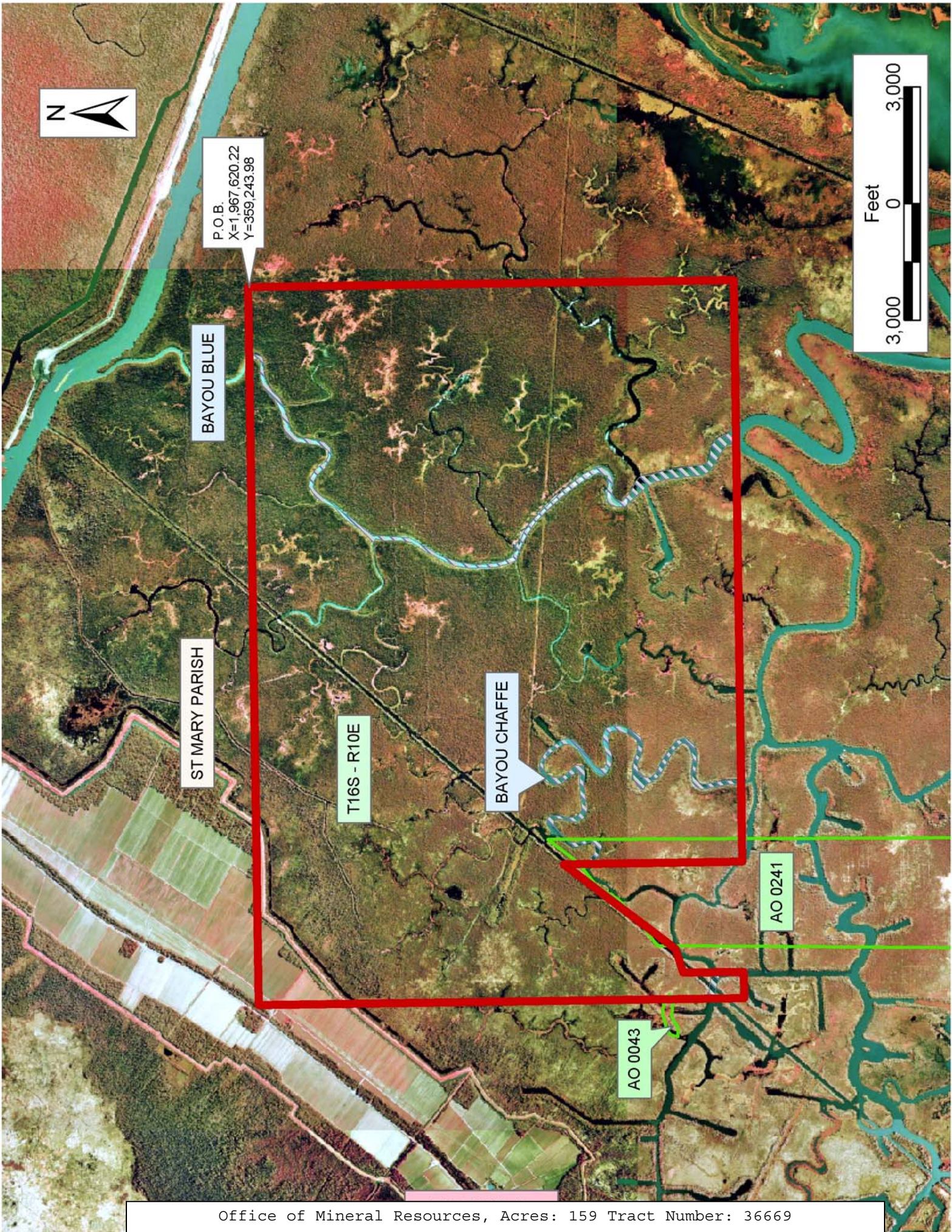
NOTE: The State of Louisiana does hereby reserve, and this lease shall be subject to, the imprescriptible right of surface use in the nature of a servitude in favor of the Department of Natural Resources, including its Offices and Commissions, for the sole purpose of implementing, constructing, servicing and maintaining approved coastal zone management and/or restoration projects. Utilization of any and all rights derived

under this lease by the mineral lessee, its agents, successors or assigns, shall not interfere with nor hinder the reasonable surface use by the Department of Natural Resources, its Offices or Commissions, as herein above reserved.

Applicant: Jerel Exploration, Inc.

Bidder	Cash Payment	Price/Acre	Rental	Oil	Gas	Other





P.O.B.  
X=1,967,620.22  
Y=359,243.98

BAYOU BLUE

ST MARY PARISH

T16S - R10E

BAYOU CHAFFE

AO 0043

AO 0241

