

TRACT 36650 - Portion of Block 65, Chandeleur Sound Area, St. Bernard Parish, Louisiana

All of the lands now or formerly constituting the beds and bottoms of all water bodies of every nature and description the title of which vests in the State of Louisiana, together with all islands arising therein and other lands formed by accretion or by reliction, where allowed by law, excepting tax adjudicated lands, and not presently under mineral lease on September 8, 2004, situated in St. Bernard Parish, Louisiana, and more particularly described as follows: Beginning at the Northwest corner of Block 65, Chandeleur Sound Area, having Coordinates of X = 2,694,350.00 and Y = 396,080.00; thence East 7,375.00 feet to a point on the North line of said Block 65, having Coordinates of X = 2,701,725.00 and Y = 396,080.00; thence South 14,750.00 feet to a point on the South line of said Block 65, having Coordinates of X = 2,701,725.00 and Y = 381,330.00; thence West 7,375.00 feet along the South line of said Block 65 to its Southwest corner having Coordinates of X = 2,694,350.00 and Y = 381,330.00; thence North 14,750.00 feet along the West line of said Block 65, to the point of beginning, containing approximately **2,497.27 acres**, all as more particularly outlined on a plat on file in the Office of Mineral Resources, Department of Natural Resources. All bearings, distances and coordinates are based on Louisiana Coordinate System of 1927, (North or South Zone), where applicable.

NOTE: The above description of the Tract nominated for lease has been provided and corrected, where required, exclusively by the nomination party. Any mineral lease selected from this Tract and awarded by the Louisiana State Mineral Board shall be without warranty of any kind, either express, implied, or statutory, including, but not limited to, the implied warranties of merchantability and fitness for a particular purpose. Should the mineral lease awarded by the Louisiana State Mineral Board be subsequently modified, cancelled or abrogated due to the existence of conflicting leases, operating agreements, private claims or other future obligations or conditions which may affect all or any portion of the leased Tract, it shall not relieve the Lessee of the obligation to pay any bonus due thereon to the Louisiana State Mineral Board, nor shall the Louisiana State Mineral Board be obligated to refund any consideration paid by the Lessor prior to such modification, cancellation, or abrogation, including, but not limited to, bonuses, rentals and royalties.

NOTE: The Office of Mineral Resources will require a minimum bonus of \$190 per acre and a minimum royalty of 22%.

NOTE: The State of Louisiana does hereby reserve, and this lease shall be subject to, the imprescriptible right of surface use in the nature of a servitude in favor of the Department of Natural Resources, including its Offices and Commissions, for the sole purpose of implementing, constructing, servicing and maintaining approved coastal zone management and/or restoration projects. Utilization of any and all rights derived under this lease by the mineral lessee, its agents, successors or assigns,

shall not interfere with nor hinder the reasonable surface use by the Department of Natural Resources, its Offices or Commissions, as herein above reserved.

Applicant: Brian West

Bidder	Cash Payment	Price/Acre	Rental	Oil	Gas	Other

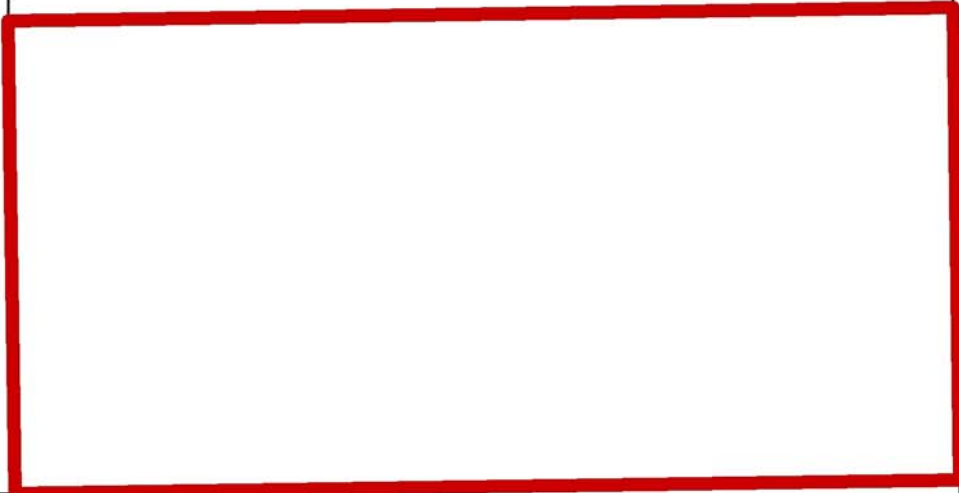


ST BERNARD PARISH

BLOCK CS0054

BLOCK CS0065

BLOCK BS0005



CHANDELEUR SOUND AREA

BRETON SOUND AREA

P.O.B.
X=2,694,350.00
Y=396,080.00

BLOCK CS0053

BLOCK CS0066

BLOCK BS0004

TRACT 36651 - Portion of Block 65, Chandeleur Sound Area, St. Bernard Parish, Louisiana

All of the lands now or formerly constituting the beds and bottoms of all water bodies of every nature and description the title of which vests in the State of Louisiana, together with all islands arising therein and other lands formed by accretion or by reliction, where allowed by law, excepting tax adjudicated lands, and not presently under mineral lease on September 8, 2004, situated in St. Bernard Parish, Louisiana, and more particularly described as follows: Beginning at a point on the North Line of Block 65, Chandeleur Sound Area, having Coordinates of X = 2,701,725.00 and Y = 396,080.00; thence East 7,375.00 feet to its Northeast corner having Coordinates of X = 2,709,100.00 and Y = 396,080.00; thence South 14,750.00 feet to the Southeast corner of said Block 65, having Coordinates of X = 2,709,100.00 and Y = 381,330.00; thence West 7,375.00 feet along the South line of said Block 65, to a point having Coordinates of X = 2,701,725.00 and Y = 381,330.00; thence North 14,750.00 feet to the point of beginning, containing approximately **2,497.27 acres**, all as more particularly outlined on a plat on file in the Office of Mineral Resources, Department of Natural Resources. All bearings, distances and coordinates are based on Louisiana Coordinate System of 1927, (North or South Zone), where applicable.

NOTE: The above description of the Tract nominated for lease has been provided and corrected, where required, exclusively by the nomination party. Any mineral lease selected from this Tract and awarded by the Louisiana State Mineral Board shall be without warranty of any kind, either express, implied, or statutory, including, but not limited to, the implied warranties of merchantability and fitness for a particular purpose. Should the mineral lease awarded by the Louisiana State Mineral Board be subsequently modified, cancelled or abrogated due to the existence of conflicting leases, operating agreements, private claims or other future obligations or conditions which may affect all or any portion of the leased Tract, it shall not relieve the Lessee of the obligation to pay any bonus due thereon to the Louisiana State Mineral Board, nor shall the Louisiana State Mineral Board be obligated to refund any consideration paid by the Lessor prior to such modification, cancellation, or abrogation, including, but not limited to, bonuses, rentals and royalties.

NOTE: The Office of Mineral Resources will require a minimum bonus of \$190 per acre and a minimum royalty of 22%.

NOTE: The State of Louisiana does hereby reserve, and this lease shall be subject to, the imprescriptible right of surface use in the nature of a servitude in favor of the Department of Natural Resources, including its Offices and Commissions, for the sole purpose of implementing, constructing, servicing and maintaining approved coastal zone management and/or restoration projects. Utilization of any and all rights derived under this lease by the mineral lessee, its agents, successors or assigns, shall not interfere with nor hinder the reasonable surface use by the

Department of Natural Resources, its Offices or Commissions, as herein above reserved.

Applicant: Brian West

Bidder	Cash Payment	Price/Acre	Rental	Oil	Gas	Other



BLOCK CS0055

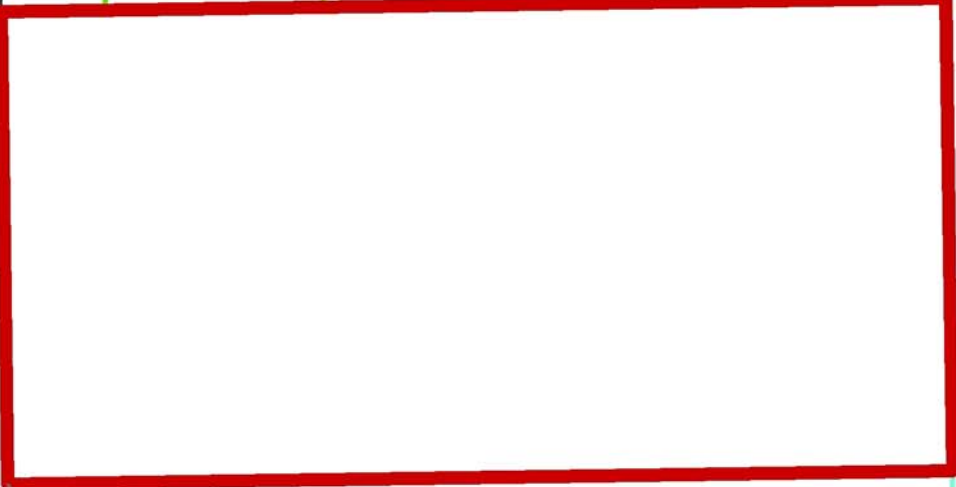
ST BERNARD PARISH

BLOCK CS0064

BLOCK BS0006



S.L. 17409



P.O.B.
X=2,701,725.00
Y=396,080.00

BLOCK CS0054

BLOCK CS0065

BLOCK BS0005

CHANDELEUR SOUND AREA

BRETON SOUND AREA

TRACT 36652 - Portion of Block 66, Chandeleur Sound Area, St. Bernard Parish, Louisiana

All of the lands now or formerly constituting the beds and bottoms of all water bodies of every nature and description the title of which vests in the State of Louisiana, together with all islands arising therein and other lands formed by accretion or by reliction, where allowed by law, excepting tax adjudicated lands, and not presently under mineral lease on September 8, 2004, situated in St. Bernard Parish, Louisiana, and more particularly described as follows: Beginning at the Northwest corner of Block 66, Chandeleur Sound Area, having Coordinates of X = 2,679,600.00 and Y = 396,080.00; thence East 7,375.00 feet along the North line of said Block 66, to a point having Coordinates of X = 2,686,975.00 and Y = 396,080.00; thence South 14,750.00 feet to a point on the South line of said Block 66, having Coordinates of X = 2,686,975.00 and Y = 381,330.00; thence West 7,375.00 feet to the Southwest corner of said Block 66, having Coordinates of X = 2,679,600.00 and Y = 381,330.00; thence North 14,750.00 feet along the West line of said Block 66 to the point of beginning, containing approximately **2,497.27 acres**, all as more particularly outlined on a plat on file in the Office of Mineral Resources, Department of Natural Resources. All bearings, distances and coordinates are based on Louisiana Coordinate System of 1927, (North or South Zone), where applicable.

NOTE: The above description of the Tract nominated for lease has been provided and corrected, where required, exclusively by the nomination party. Any mineral lease selected from this Tract and awarded by the Louisiana State Mineral Board shall be without warranty of any kind, either express, implied, or statutory, including, but not limited to, the implied warranties of merchantability and fitness for a particular purpose. Should the mineral lease awarded by the Louisiana State Mineral Board be subsequently modified, cancelled or abrogated due to the existence of conflicting leases, operating agreements, private claims or other future obligations or conditions which may affect all or any portion of the leased Tract, it shall not relieve the Lessee of the obligation to pay any bonus due thereon to the Louisiana State Mineral Board, nor shall the Louisiana State Mineral Board be obligated to refund any consideration paid by the Lessor prior to such modification, cancellation, or abrogation, including, but not limited to, bonuses, rentals and royalties.

NOTE: The Office of Mineral Resources will require a minimum bonus of \$190 per acre and a minimum royalty of 22%.

NOTE: The State of Louisiana does hereby reserve, and this lease shall be subject to, the imprescriptible right of surface use in the nature of a servitude in favor of the Department of Natural Resources, including its Offices and Commissions, for the sole purpose of implementing, constructing, servicing and maintaining approved coastal zone management and/or restoration projects. Utilization of any and all rights derived under this lease by the mineral lessee, its agents, successors or assigns,

shall not interfere with nor hinder the reasonable surface use by the Department of Natural Resources, its Offices or Commissions, as herein above reserved.

Applicant: Brian West

Bidder	Cash Payment	Price/Acre	Rental	Oil	Gas	Other

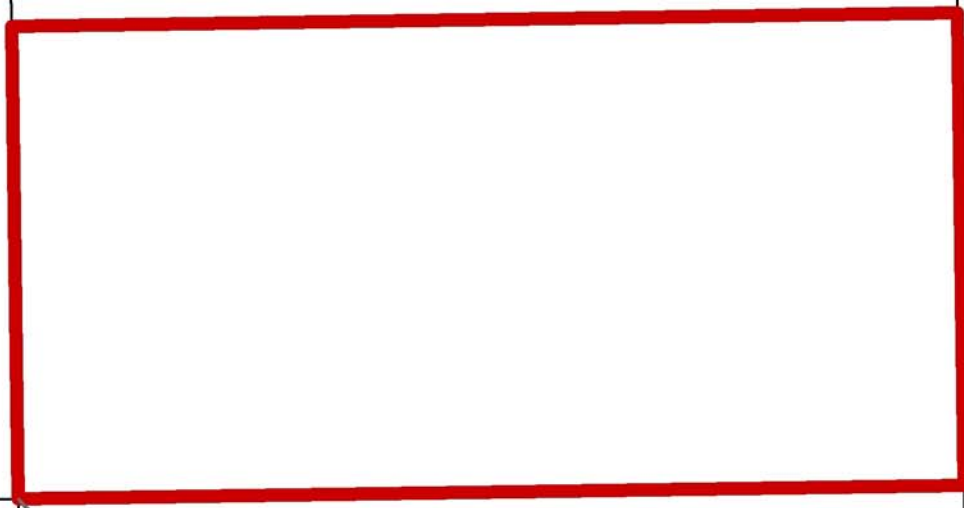
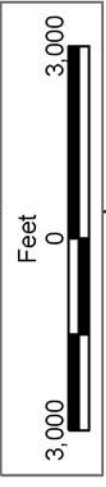


ST BERNARD PARISH

BLOCK CS0053

BLOCK CS0066

BLOCK BS0004



P.O.B.
X=2,679,600.00
Y=396,080.00

CHANDELEUR SOUND AREA

BLOCK CS0052

BLOCK CS0067

BLOCK BS0003

BRETON SOUND AREA

TRACT 36653 - Portion of Block 66, Chandeleur Sound Area, St. Bernard Parish, Louisiana

All of the lands now or formerly constituting the beds and bottoms of all water bodies of every nature and description the title of which vests in the State of Louisiana, together with all islands arising therein and other lands formed by accretion or by reliction, where allowed by law, excepting tax adjudicated lands, and not presently under mineral lease on September 8, 2004, situated in St. Bernard Parish, Louisiana, and more particularly described as follows: Beginning at a point on the North line of Block 66, Chandeleur Sound Area; having Coordinates of X = 2,686,975.00 and Y = 396,080.00; thence East 7,375.00 feet to its Northeast corner, having Coordinates of X = 2,694,350.00 and Y = 396,080.00; thence South 14,750.00 feet along the East line of said Block 66 to its Southeast corner, having Coordinates of X = 2,694,350.00 and Y = 381,330.00; thence West 7,375.00 feet along the South line of said Block 66, to a point having Coordinates of X = 2,686,975.00 and Y = 381,330.00; thence North 14,750.00 feet to the point of beginning, containing approximately **2,497.27 acres**, all as more particularly outlined on a plat on file in the Office of Mineral Resources, Department of Natural Resources. All bearings, distances and coordinates are based on Louisiana Coordinate System of 1927, (North or South Zone), where applicable.

NOTE: The above description of the Tract nominated for lease has been provided and corrected, where required, exclusively by the nomination party. Any mineral lease selected from this Tract and awarded by the Louisiana State Mineral Board shall be without warranty of any kind, either express, implied, or statutory, including, but not limited to, the implied warranties of merchantability and fitness for a particular purpose. Should the mineral lease awarded by the Louisiana State Mineral Board be subsequently modified, cancelled or abrogated due to the existence of conflicting leases, operating agreements, private claims or other future obligations or conditions which may affect all or any portion of the leased Tract, it shall not relieve the Lessee of the obligation to pay any bonus due thereon to the Louisiana State Mineral Board, nor shall the Louisiana State Mineral Board be obligated to refund any consideration paid by the Lessor prior to such modification, cancellation, or abrogation, including, but not limited to, bonuses, rentals and royalties.

NOTE: The Office of Mineral Resources will require a minimum bonus of \$190 per acre and a minimum royalty of 22%.

NOTE: The State of Louisiana does hereby reserve, and this lease shall be subject to, the imprescriptible right of surface use in the nature of a servitude in favor of the Department of Natural Resources, including its Offices and Commissions, for the sole purpose of implementing, constructing, servicing and maintaining approved coastal zone management and/or restoration projects. Utilization of any and all rights derived under this lease by the mineral lessee, its agents, successors or assigns, shall not interfere with nor hinder the reasonable surface use by the

Department of Natural Resources, its Offices or Commissions, as herein above reserved.

Applicant: Brian West

Bidder	Cash Payment	Price/Acre	Rental	Oil	Gas	Other



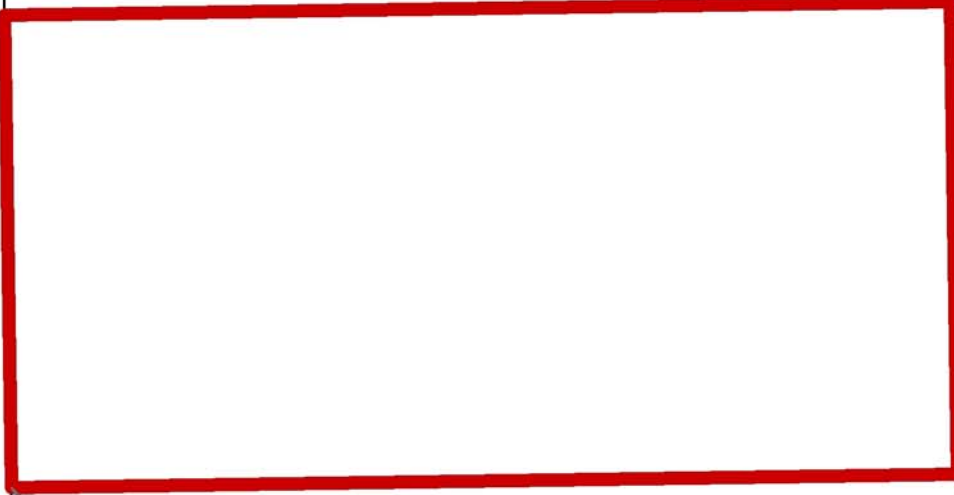
BLOCK CS0054

BLOCK CS0065

BLOCK BS0005



ST BERNARD PARISH



BLOCK CS0053

BLOCK CS0066

BLOCK BS0004

P.O.B.
X=2,686,975.00
Y=396,080.00

CHANDELEUR SOUND AREA

BLOCK CS0052

BLOCK CS0067

BLOCK BS0003

BRETON SOUND AREA

TRACT 36654 - St. Mary Parish, Louisiana

All of the lands now or formerly constituting the beds and bottoms of all water bodies of every nature and description the title of which vests in the State of Louisiana, together with all islands arising therein and other lands formed by accretion or by reliction, where allowed by law, excepting tax adjudicated lands, and not presently under mineral lease on September 8, 2004, situated in St. Mary Parish, Louisiana, and more particularly described as follows: Beginning at a point having Coordinates of X = 1,961,960.22 and Y = 398,271.93; Thence East 17,839.78 feet to a point having Coordinates of X = 1,979,800.00 and Y = 398,271.93; Thence South 12,791.93 feet to the Northwest corner of State lease No. 17647 having Coordinates of X = 1,979,800.00 and Y = 385,480.00; Thence West 12,179.78 feet to a point having Coordinates of X = 1,967,620.22 and Y = 385,480.00; Thence North 2,791.93 feet to a point having Coordinates of X = 1,967,620.22 and Y = 388,271.93; Thence West 5,660.00 feet to a point having Coordinates of X = 1,961,960.22 and Y = 388,271.93; Thence North 10,000.00 feet to the point of beginning, containing approximately **59 acres**, all as more particularly outlined on a plat on file in the Office of Mineral Resources, Department of Natural Resources. All bearings, distances and coordinates are based on Louisiana Coordinate System of 1927, (North or South Zone), where applicable.

NOTE: The above description of the Tract nominated for lease has been provided and corrected, where required, exclusively by the nomination party. Any mineral lease selected from this Tract and awarded by the Louisiana State Mineral Board shall be without warranty of any kind, either express, implied, or statutory, including, but not limited to, the implied warranties of merchantability and fitness for a particular purpose. Should the mineral lease awarded by the Louisiana State Mineral Board be subsequently modified, cancelled or abrogated due to the existence of conflicting leases, operating agreements, private claims or other future obligations or conditions which may affect all or any portion of the leased Tract, it shall not relieve the Lessee of the obligation to pay any bonus due thereon to the Louisiana State Mineral Board, nor shall the Louisiana State Mineral Board be obligated to refund any consideration paid by the Lessor prior to such modification, cancellation, or abrogation, including, but not limited to, bonuses, rentals and royalties.

NOTE: The State of Louisiana does hereby reserve, and this lease shall be subject to, the imprescriptible right of surface use in the nature of a servitude in favor of the Department of Natural Resources, including its Offices and Commissions, for the sole purpose of implementing, constructing, servicing and maintaining approved coastal zone management and/or restoration projects. Utilization of any and all rights derived under this lease by the mineral lessee, its agents, successors or assigns, shall not interfere with nor hinder the reasonable surface use by the Department of Natural Resources, its Offices or Commissions, as herein above reserved.

Applicant: Jerel Exploration, Inc.

Bidder	Cash Payment	Price/Acre	Rental	Oil	Gas	Other



SL 17647



ST MARY PARISH

BAYOU TECHE

P.O.B.
X=1,961,960.22
Y=398,271.93

T15S - R10E

TRACT 36655 - St. Mary Parish, Louisiana

All of the lands now or formerly constituting the beds and bottoms of all water bodies of every nature and description the title of which vests in the State of Louisiana, together with all islands arising therein and other lands formed by accretion or by reliction, where allowed by law, excepting tax adjudicated lands, and not presently under mineral lease on September 8, 2004, situated in St. Mary Parish, Louisiana, and more particularly described as follows: Beginning at a point having Coordinates of X = 1,925,680.22 and Y = 398,271.93; Thence South 10,000.00 feet to a point having Coordinates of X = 1,925,680.22 and Y = 388,271.93; Thence West 17,500.00 feet to a point having Coordinates of X = 1,908,180.22 and Y = 388,271.93; Thence North 6,163.63 feet to a point having Coordinates of X = 1,908,180.22 and Y = 394,435.56; Thence East 5,648.14 feet to a point having Coordinates of X = 1,913,828.36 and Y = 394,435.56; Thence North 3,836.37 feet to a point having Coordinates of X = 1,913,828.36 and Y = 398,271.93; Thence East 11,851.86 feet to the point of beginning, containing approximately **886 acres**, all as more particularly outlined on a plat on file in the Office of Mineral Resources, Department of Natural Resources. All bearings, distances and coordinates are based on Louisiana Coordinate System of 1927, (North or South Zone), where applicable.

NOTE: The above description of the Tract nominated for lease has been provided and corrected, where required, exclusively by the nomination party. Any mineral lease selected from this Tract and awarded by the Louisiana State Mineral Board shall be without warranty of any kind, either express, implied, or statutory, including, but not limited to, the implied warranties of merchantability and fitness for a particular purpose. Should the mineral lease awarded by the Louisiana State Mineral Board be subsequently modified, cancelled or abrogated due to the existence of conflicting leases, operating agreements, private claims or other future obligations or conditions which may affect all or any portion of the leased Tract, it shall not relieve the Lessee of the obligation to pay any bonus due thereon to the Louisiana State Mineral Board, nor shall the Louisiana State Mineral Board be obligated to refund any consideration paid by the Lessor prior to such modification, cancellation, or abrogation, including, but not limited to, bonuses, rentals and royalties.

NOTE: The State of Louisiana does hereby reserve, and this lease shall be subject to, the imprescriptible right of surface use in the nature of a servitude in favor of the Department of Natural Resources, including its Offices and Commissions, for the sole purpose of implementing, constructing, servicing and maintaining approved coastal zone management and/or restoration projects. Utilization of any and all rights derived under this lease by the mineral lessee, its agents, successors or assigns, shall not interfere with nor hinder the reasonable surface use by the Department of Natural Resources, its Offices or Commissions, as herein above reserved.

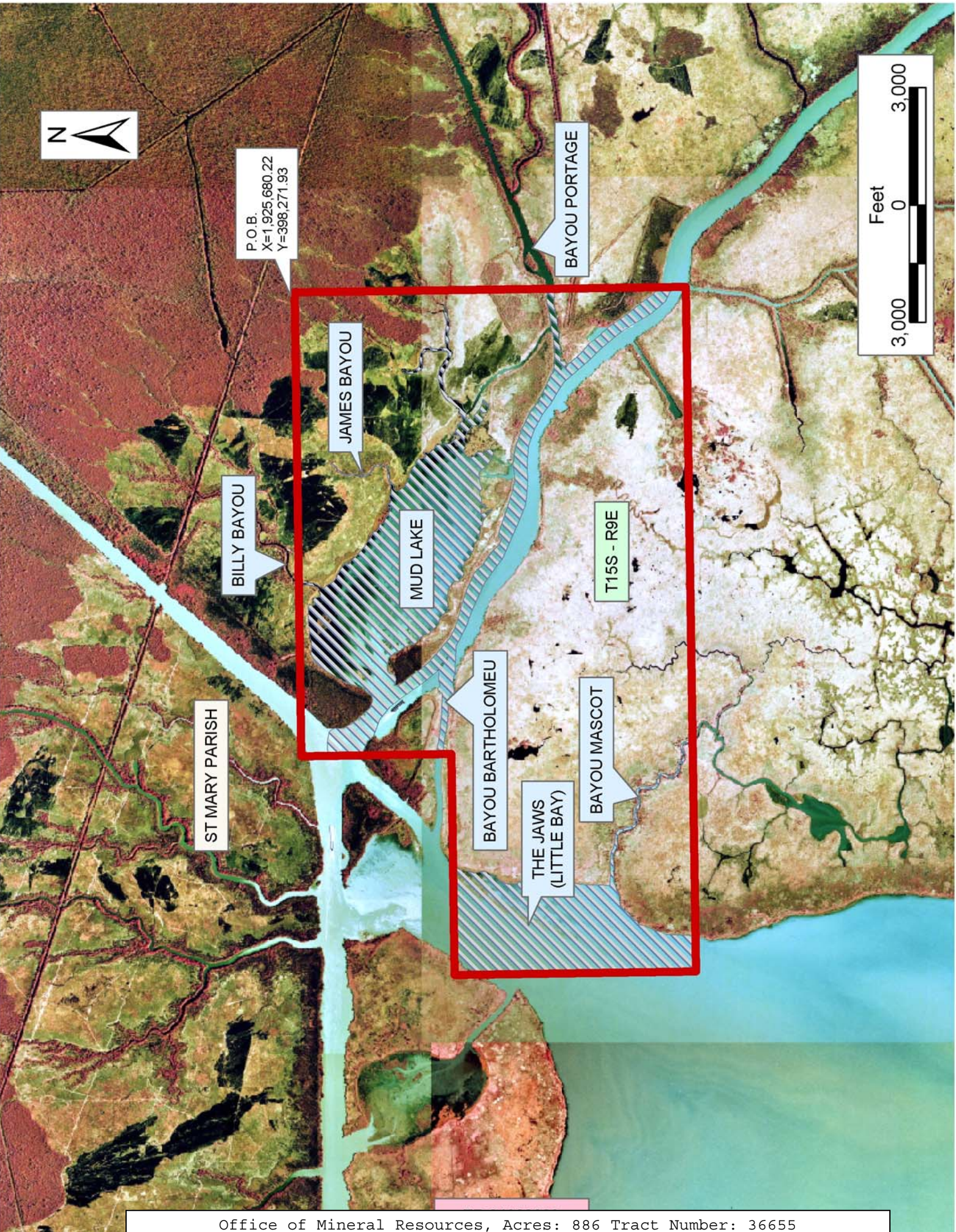
NOTE: The Department of Wildlife and Fisheries has designated certain areas in the coastal waters of the State of Louisiana as Oyster Seed Bed Areas. The exact location of those Seed Bed Areas must be obtained from the Department of Wildlife and Fisheries and any work done under a mineral lease from the State of Louisiana may necessarily be conducted in conformity with the rules and regulations promulgated by the said Department of Wildlife and Fisheries for Oyster Seed Bed Areas.

Applicant: Jerel Exploration, Inc.

Bidder	Cash Payment	Price/Acre	Rental	Oil	Gas	Other



P.O.B.
X=1,925,680.22
Y=398,271.93



ST MARY PARISH

BILLY BAYOU

JAMES BAYOU

MUD LAKE

T15S - R9E

BAYOU BARTHOLOMEU

THE JAWS
(LITTLE BAY)

BAYOU MASCOT

BAYOU PORTAGE

TRACT 36656 - St. Mary Parish, Louisiana

All of the lands now or formerly constituting the beds and bottoms of all water bodies of every nature and description the title of which vests in the State of Louisiana, together with all islands arising therein and other lands formed by accretion or by reliction, where allowed by law, excepting tax adjudicated lands, and not presently under mineral lease on September 8, 2004, situated in St. Mary Parish, Louisiana, and more particularly described as follows: Beginning at a point having Coordinates of X = 1,925,680.22 and Y = 398,271.93; Thence East 9,584.26 feet to a point having Coordinates of X = 1,935,264.48 and Y = 398,271.93; Thence South 3,836.37 feet to a point having Coordinates of X = 1,935,264.48 and Y = 394,435.56; Thence East 8,215.74 feet to a point having Coordinates of X = 1,943,480.22 and Y = 394,435.56; Thence South 6,163.63 feet to a point having Coordinates of X = 1,943,480.22 and Y = 388,271.93; Thence West 17,800.00 feet to a point having Coordinates of X = 1,925,680.22 and Y = 388,271.93; Thence North 10,000.00 feet to the point of beginning, containing approximately **44 acres**, all as more particularly outlined on a plat on file in the Office of Mineral Resources, Department of Natural Resources. All bearings, distances and coordinates are based on Louisiana Coordinate System of 1927, (North or South Zone), where applicable.

NOTE: The above description of the Tract nominated for lease has been provided and corrected, where required, exclusively by the nomination party. Any mineral lease selected from this Tract and awarded by the Louisiana State Mineral Board shall be without warranty of any kind, either express, implied, or statutory, including, but not limited to, the implied warranties of merchantability and fitness for a particular purpose. Should the mineral lease awarded by the Louisiana State Mineral Board be subsequently modified, cancelled or abrogated due to the existence of conflicting leases, operating agreements, private claims or other future obligations or conditions which may affect all or any portion of the leased Tract, it shall not relieve the Lessee of the obligation to pay any bonus due thereon to the Louisiana State Mineral Board, nor shall the Louisiana State Mineral Board be obligated to refund any consideration paid by the Lessor prior to such modification, cancellation, or abrogation, including, but not limited to, bonuses, rentals and royalties.

NOTE: The State of Louisiana does hereby reserve, and this lease shall be subject to, the imprescriptible right of surface use in the nature of a servitude in favor of the Department of Natural Resources, including its Offices and Commissions, for the sole purpose of implementing, constructing, servicing and maintaining approved coastal zone management and/or restoration projects. Utilization of any and all rights derived under this lease by the mineral lessee, its agents, successors or assigns, shall not interfere with nor hinder the reasonable surface use by the Department of Natural Resources, its Offices or Commissions, as herein above reserved.

Applicant: Jerel Exploration, Inc.

Bidder	Cash Payment	Price/Acre	Rental	Oil	Gas	Other



ST MARY PARISH

T15S - R9E

BAYOU PORTAGE

P.O.B.
X=1,925,680.22
Y=398,271.93

TRACT 36657 - St. Mary Parish, Louisiana

All of the lands now or formerly constituting the beds and bottoms of all water bodies of every nature and description the title of which vests in the State of Louisiana, together with all islands arising therein and other lands formed by accretion or by reliction, where allowed by law, excepting tax adjudicated lands, and not presently under mineral lease on September 8, 2004, situated in St. Mary Parish, Louisiana, and more particularly described as follows: Beginning at a point having Coordinates of X = 1,896,323.36 and Y = 398,271.93; Thence East 17,505.00 feet to a point having Coordinates of X = 1,913,828.36 and Y = 398,271.93; Thence South 3,836.37 feet to a point having Coordinates of X = 1,913,828.36 and Y = 394,435.56; Thence West 5,648.14 feet to a point having Coordinates of X = 1,908,180.22 and Y = 394,435.56; Thence South 6,163.63 feet to a point having Coordinates of X = 1,908,180.22 and Y = 388,271.93; Thence West 5,240.00 feet to a point having Coordinates of X = 1,902,940.22 and Y = 388,271.93; Thence South 7,171.14 feet to a point having Coordinates of X = 1,902,940.22 and Y = 381,100.79; Thence West 6,616.86 feet to a point having Coordinates of X = 1,896,323.36 and Y = 381,100.79; Thence North 17,171.14 feet to the point of beginning, containing approximately **2,494 acres**, all as more particularly outlined on a plat on file in the Office of Mineral Resources, Department of Natural Resources. All bearings, distances and coordinates are based on Louisiana Coordinate System of 1927, (North or South Zone), where applicable.

NOTE: The above description of the Tract nominated for lease has been provided and corrected, where required, exclusively by the nomination party. Any mineral lease selected from this Tract and awarded by the Louisiana State Mineral Board shall be without warranty of any kind, either express, implied, or statutory, including, but not limited to, the implied warranties of merchantability and fitness for a particular purpose. Should the mineral lease awarded by the Louisiana State Mineral Board be subsequently modified, cancelled or abrogated due to the existence of conflicting leases, operating agreements, private claims or other future obligations or conditions which may affect all or any portion of the leased Tract, it shall not relieve the Lessee of the obligation to pay any bonus due thereon to the Louisiana State Mineral Board, nor shall the Louisiana State Mineral Board be obligated to refund any consideration paid by the Lessor prior to such modification, cancellation, or abrogation, including, but not limited to, bonuses, rentals and royalties.

NOTE: The State of Louisiana does hereby reserve, and this lease shall be subject to, the imprescriptible right of surface use in the nature of a servitude in favor of the Department of Natural Resources, including its Offices and Commissions, for the sole purpose of implementing, constructing, servicing and maintaining approved coastal zone management and/or restoration projects. Utilization of any and all rights derived under this lease by the mineral lessee, its agents, successors or assigns, shall not interfere with nor hinder the reasonable surface use by the

Department of Natural Resources, its Offices or Commissions, as herein above reserved.

NOTE: The Department of Wildlife and Fisheries has designated certain areas in the coastal waters of the State of Louisiana as Oyster Seed Bed Areas. The exact location of those Seed Bed Areas must be obtained from the Department of Wildlife and Fisheries and any work done under a mineral lease from the State of Louisiana may necessarily be conducted in conformity with the rules and regulations promulgated by the said Department of Wildlife and Fisheries for Oyster Seed Bed Areas.

Applicant: Jerel Exploration, Inc.

Bidder	Cash Payment	Price/Acre	Rental	Oil	Gas	Other

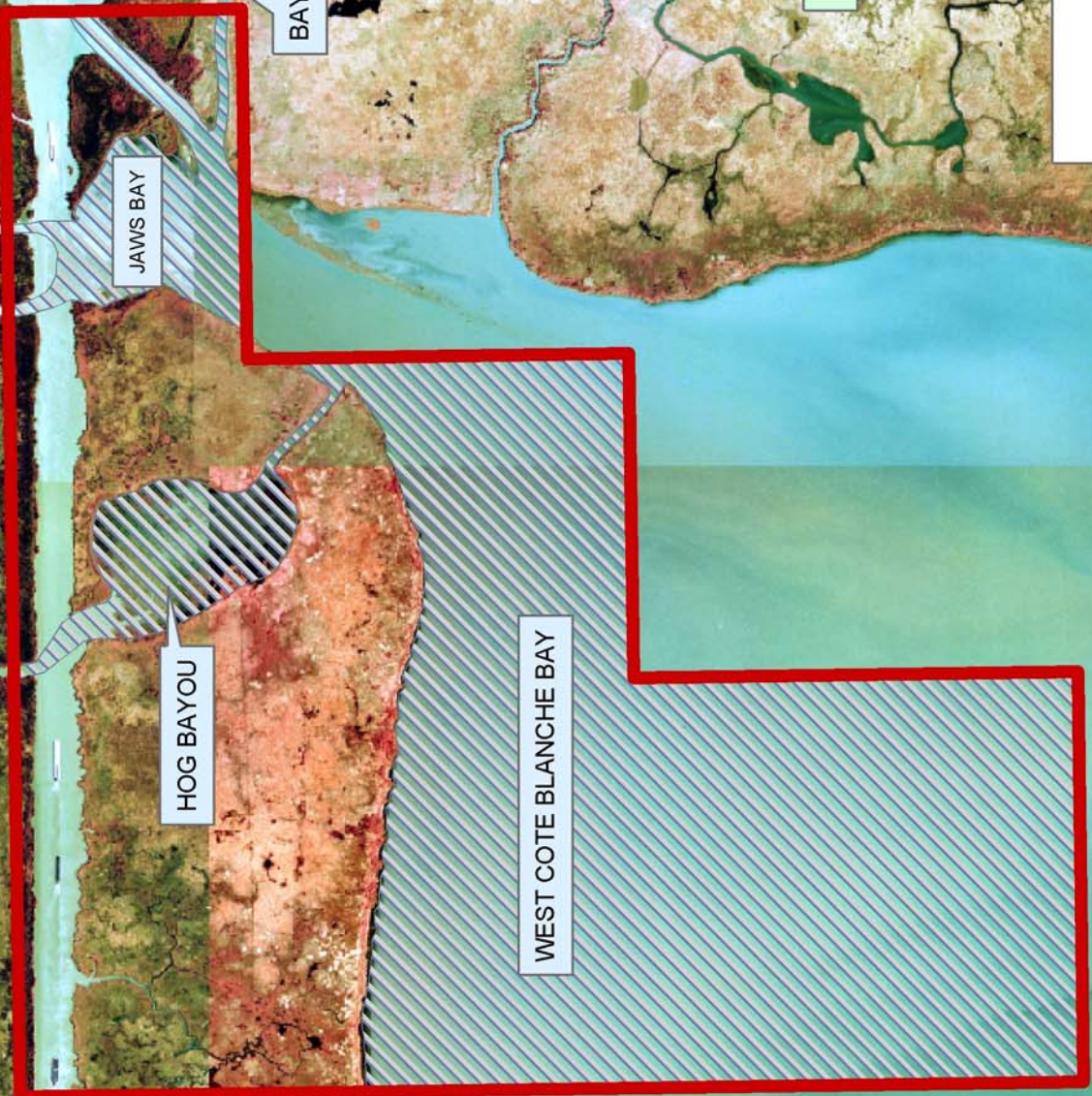


BAYOU CHOUPIQUE

BAYOU GREGORIE

ST MARY PARISH

P.O.B.
X=1,896,323.36
Y=398,271.93



JAWS BAY

HOG BAYOU

BAYOU BARTHOLOMEU

WEST COTE BLANCHE BAY

T15S - R8E



TRACT 36658 - Cameron Parish, Louisiana

All of the lands now or formerly constituting the beds and bottoms of all water bodies of every nature and description the title of which vests in the State of Louisiana, together with all islands arising therein and other lands formed by accretion or by reliction, where allowed by law, excepting tax adjudicated lands, and not presently under mineral lease on September 8, 2004, situated in Cameron Parish, Louisiana, and more particularly described as follows: Beginning at a point having Coordinates of X = 1,288,145.38 and Y = 403,746.45, thence Northeasterly on a straight line to a point having Coordinates of X = 1,291,413 and Y = 404,205, thence North 00 degrees 00 minutes 00 seconds East 560.34 feet to a point having Coordinates of X = 1,291,413.00 and Y = 404,765.34, thence South 81 degrees 49 minutes 09 seconds West 576.74 feet to a point having Coordinates of X = 1,290,842.13 and Y = 404,683.27, thence South 84 degrees 28 minutes 57 seconds West 762.03 feet having Coordinates of X = 1,290,083.63 and Y = 404,610.00, thence South 79 degrees 27 minutes 53 seconds West 1,524.90 feet to a point having Coordinates of X = 1,288,584.44 and Y = 404,331.19, thence South 80 degrees 39 minutes 33.1 seconds West 445.44 feet to a point having Coordinates of X = 1,288,145.38 and Y = 404,258.97, thence South 00 degrees 00 minutes 00 seconds West 512.52 feet to the point of beginning, containing approximately **41.75 acres**, all as more particularly outlined on a plat on file in the Office of Mineral Resources, Department of Natural Resources. All bearings, distances and coordinates are based on Louisiana Coordinate System of 1927, (North or South Zone), where applicable.

NOTE: The above description of the Tract nominated for lease has been provided and corrected, where required, exclusively by the nomination party. Any mineral lease selected from this Tract and awarded by the Louisiana State Mineral Board shall be without warranty of any kind, either express, implied, or statutory, including, but not limited to, the implied warranties of merchantability and fitness for a particular purpose. Should the mineral lease awarded by the Louisiana State Mineral Board be subsequently modified, cancelled or abrogated due to the existence of conflicting leases, operating agreements, private claims or other future obligations or conditions which may affect all or any portion of the leased Tract, it shall not relieve the Lessee of the obligation to pay any bonus due thereon to the Louisiana State Mineral Board, nor shall the Louisiana State Mineral Board be obligated to refund any consideration paid by the Lessor prior to such modification, cancellation, or abrogation, including, but not limited to, bonuses, rentals and royalties.

NOTE: The State of Louisiana does hereby reserve, and this lease shall be subject to, the imprescriptible right of surface use in the nature of a servitude in favor of the Department of Natural Resources, including its Offices and Commissions, for the sole purpose of implementing, constructing, servicing and maintaining approved coastal zone management and/or restoration projects. Utilization of any and all rights derived under this lease by the mineral lessee, its agents, successors or assigns,

shall not interfere with nor hinder the reasonable surface use by the Department of Natural Resources, its Offices or Commissions, as herein above reserved.

Applicant: Patrick L. Donohue Petroleum Properties, Inc.

Bidder	Cash Payment	Price/Acre	Rental	Oil	Gas	Other



CAMERON PARISH

T15S - R12W

SL 16803

BLOCK WC0010

WEST CAMERON AREA, REVISED

P.O.B.
X=1,288,145.38
Y=403,746.45

BLOCK WC0011



TRACT 36659 - Cameron Parish, Louisiana

All of the lands now or formerly constituting the beds and bottoms of all water bodies of every nature and description the title of which vests in the State of Louisiana, together with all islands arising therein and other lands formed by accretion or by reliction, where allowed by law, excepting tax adjudicated lands, and not presently under mineral lease on September 8, 2004, situated in Cameron Parish, Louisiana, and more particularly described as follows: Beginning at a point having Coordinates of X = 1,288,145.38 and Y = 403,746.45, thence South 82 degrees 00 minutes 43 seconds West 2,010.89 feet to a point having Coordinates of X = 1,286,154.00 and Y = 403,467.00, thence South 83 degrees 19 minutes 40 seconds West 267.20 feet to a point having Coordinates of X = 1,285,888.61 and Y = 403,435.95, thence North 00 degrees 00 minutes 00 seconds East 469.94 feet to a point having Coordinates of X = 1,285,888.61 and Y = 403,905.90, thence North 82 degrees 30 minutes 48 seconds East 912.61 feet to a point having Coordinates of X = 1,286,793.43 and Y = 404,024.80, thence North 80 degrees 17 minutes 30.8 seconds East 1,371.59 feet to a point having Coordinates of X = 1,288,145.38 and Y = 404,256.09, thence South 00 degrees 00 minutes 00 seconds West 509.52 feet to the point of beginning, containing approximately **24.96 acres**, all as more particularly outlined on a plat on file in the Office of Mineral Resources, Department of Natural Resources. All bearings, distances and coordinates are based on Louisiana Coordinate System of 1927, (North or South Zone), where applicable.

NOTE: The above description of the Tract nominated for lease has been provided and corrected, where required, exclusively by the nomination party. Any mineral lease selected from this Tract and awarded by the Louisiana State Mineral Board shall be without warranty of any kind, either express, implied, or statutory, including, but not limited to, the implied warranties of merchantability and fitness for a particular purpose. Should the mineral lease awarded by the Louisiana State Mineral Board be subsequently modified, cancelled or abrogated due to the existence of conflicting leases, operating agreements, private claims or other future obligations or conditions which may affect all or any portion of the leased Tract, it shall not relieve the Lessee of the obligation to pay any bonus due thereon to the Louisiana State Mineral Board, nor shall the Louisiana State Mineral Board be obligated to refund any consideration paid by the Lessor prior to such modification, cancellation, or abrogation, including, but not limited to, bonuses, rentals and royalties.

NOTE: The State of Louisiana does hereby reserve, and this lease shall be subject to, the imprescriptible right of surface use in the nature of a servitude in favor of the Department of Natural Resources, including its Offices and Commissions, for the sole purpose of implementing, constructing, servicing and maintaining approved coastal zone management and/or restoration projects. Utilization of any and all rights derived under this lease by the mineral lessee, its agents, successors or assigns, shall not interfere with nor hinder the reasonable surface use by the

Department of Natural Resources, its Offices or Commissions, as herein above reserved.

Applicant: Patrick L. Donohue Petroleum Properties, Inc.

Bidder	Cash Payment	Price/Acre	Rental	Oil	Gas	Other

