

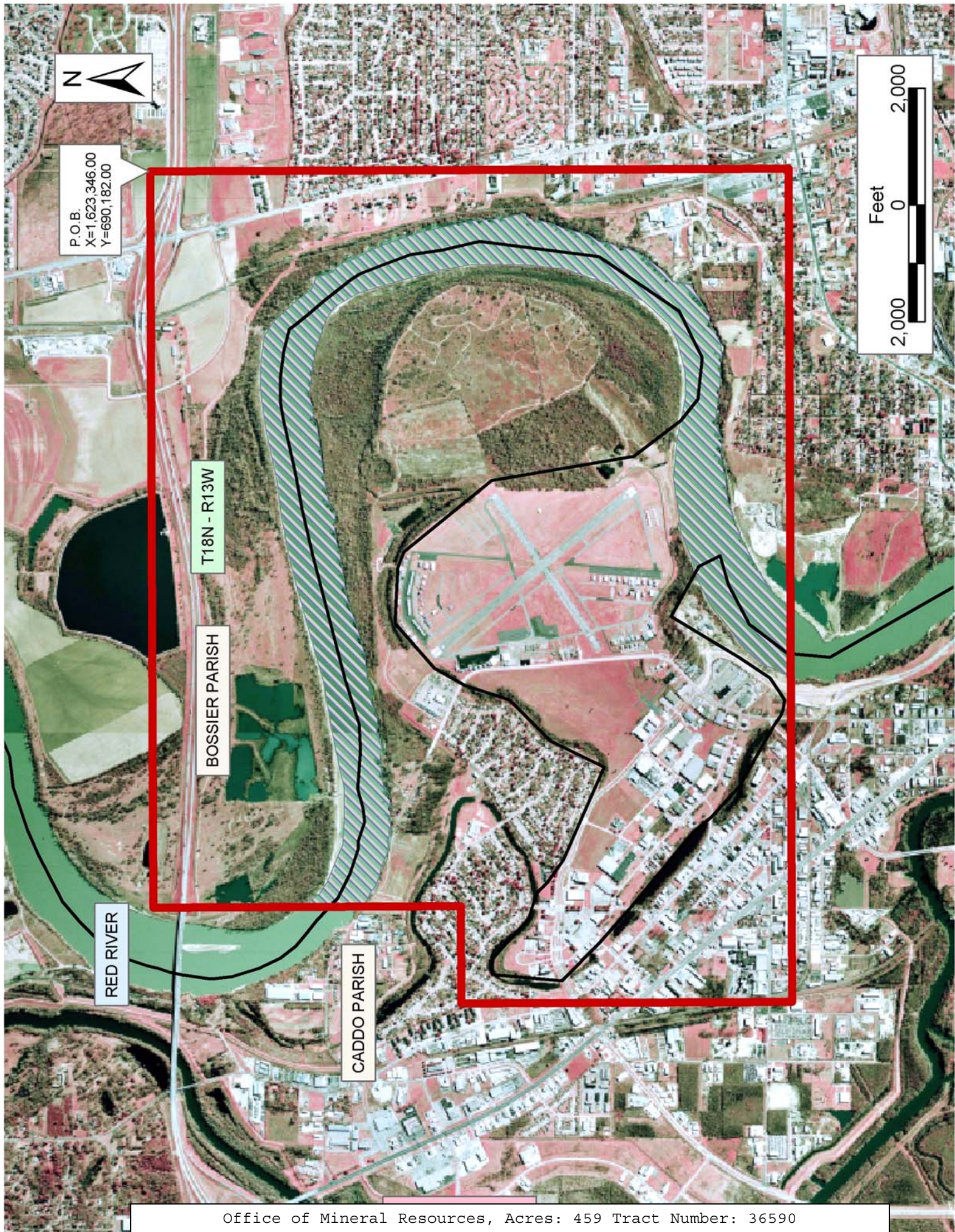
TRACT 36590 - Bossier and Caddo Parishes, Louisiana

All of the lands now or formerly constituting the beds and bottoms of all water bodies of every nature and description the title of which vests in the State of Louisiana, together with all islands arising therein and other lands formed by accretion or by reliction, where allowed by law, excepting tax adjudicated lands, and not presently under mineral lease on September 8, 2004, situated in Bossier and Caddo Parishes, Louisiana, and more particularly described as follows: Beginning at a point having Coordinates of X = 1,623,346.00 and Y = 690,182.00; thence South 10,950.00 feet to a point having Coordinates of X = 1,623,346.00 and Y = 679,232.00; thence West 14,286.00 feet to a point having Coordinates of X = 1,609,060.00 and Y = 679,232.00; thence North 5,678.00 feet to a point having Coordinates of X = 1,609,060.00 and Y = 684,910.00; thence East 1,666.00 feet to a point having Coordinates of X = 1,610,726.00 and Y = 684,910.00; thence North 5,272.00 feet to a point having Coordinates of X = 1,610,726.00 and Y = 690,182.00; thence East 12,620.00 feet to the point of beginning, containing approximately **459 acres**, all as more particularly outlined on a plat on file in the Office of Mineral Resources, Department of Natural Resources. All bearings, distances and coordinates are based on Louisiana Coordinate System of 1927, (North or South Zone), where applicable.

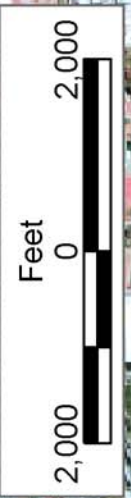
NOTE: The above description of the Tract nominated for lease has been provided and corrected, where required, exclusively by the nomination party. Any mineral lease selected from this Tract and awarded by the Louisiana State Mineral Board shall be without warranty of any kind, either express, implied, or statutory, including, but not limited to, the implied warranties of merchantability and fitness for a particular purpose. Should the mineral lease awarded by the Louisiana State Mineral Board be subsequently modified, cancelled or abrogated due to the existence of conflicting leases, operating agreements, private claims or other future obligations or conditions which may affect all or any portion of the leased Tract, it shall not relieve the Lessee of the obligation to pay any bonus due thereon to the Louisiana State Mineral Board, nor shall the Louisiana State Mineral Board be obligated to refund any consideration paid by the Lessor prior to such modification, cancellation, or abrogation, including, but not limited to, bonuses, rentals and royalties.

Applicant: Equity Oil Company

Bidder	Cash Payment	Price/Acre	Rental	Oil	Gas	Other



P.O.B.
X=1,623,346.00
Y=690,182.00



T18N - R13W

BOSSIER PARISH

RED RIVER

CADDO PARISH

TRACT 36591 - Bossier and Caddo Parishes, Louisiana

All of the lands now or formerly constituting the beds and bottoms of all water bodies of every nature and description the title of which vests in the State of Louisiana, together with all islands arising therein and other lands formed by accretion or by reliction, where allowed by law, excepting tax adjudicated lands, and not presently under mineral lease on September 8, 2004, situated in Bossier and Caddo Parishes, Louisiana, and more particularly described as follows: Beginning at a point having Coordinates of X = 1,646,400.00 and Y = 630,800.00; thence South 5,400.00 feet to a point having Coordinates of X = 1,646,400.00 and Y = 625,400.00; thence West 10,400.00 feet to a point having Coordinates of X = 1,636,000.00 and Y = 625,400.00; thence North 5,400.00 feet to a point having Coordinates of X = 1,636,000.00 and Y = 630,800.00; thence East 10,400.00 feet to the point of beginning, **LESS AND EXCEPT** all those portions of State Lease No. 10965, as amended, and State Lease No. 6931, as amended, that lie within the above described tract, containing approximately **271 acres**, all as more particularly outlined on a plat on file in the Office of Mineral Resources, Department of Natural Resources. All bearings, distances and coordinates are based on Louisiana Coordinate System of 1927, (North or South Zone), where applicable.

NOTE: The above description of the Tract nominated for lease has been provided and corrected, where required, exclusively by the nomination party. Any mineral lease selected from this Tract and awarded by the Louisiana State Mineral Board shall be without warranty of any kind, either express, implied, or statutory, including, but not limited to, the implied warranties of merchantability and fitness for a particular purpose. Should the mineral lease awarded by the Louisiana State Mineral Board be subsequently modified, cancelled or abrogated due to the existence of conflicting leases, operating agreements, private claims or other future obligations or conditions which may affect all or any portion of the leased Tract, it shall not relieve the Lessee of the obligation to pay any bonus due thereon to the Louisiana State Mineral Board, nor shall the Louisiana State Mineral Board be obligated to refund any consideration paid by the Lessor prior to such modification, cancellation, or abrogation, including, but not limited to, bonuses, rentals and royalties.

Bidder	Cash Payment	Price/Acre	Rental	Oil	Gas	Other

Applicant: Bistineau Partners



P.O.B.
X=1,646,400.00
Y=630,800.00

SL 11155

CADDO PARISH

BOSSIER PARISH

T16N - R13W

SL 16034

SL 6931

SL 10965

RED RIVER

SL 11855

TRACT 36592 - Bossier Parish, Louisiana

All of the lands now or formerly constituting the beds and bottoms of all water bodies of every nature and description the title of which vests in the State of Louisiana, together with all islands arising therein and other lands formed by accretion or by reliction, where allowed by law, excepting tax adjudicated lands, and not presently under mineral lease on September 8, 2004, situated in Bossier Parish, Louisiana, and more particularly described as follows: Beginning at a point having Coordinates of X = 1,679,900.00 and Y = 614,200.00; thence North 6,200.00 feet to a point having Coordinates of X = 1,679,900.00 and Y = 620,400.00; thence East 3,100.00 feet to a point having Coordinates of X = 1,683,000.00 and Y = 620,400.00; Thence South 6,200.00 feet to a point having Coordinates of X = 1,683,000.00 and Y = 614,200.00; thence West 3,100.00 feet to the point of beginning, **LESS AND EXCEPT** all those portions of State Lease No. 5849, State Lease No. 5978, State Lease No. 13190 and State Lease No. 17732 that may lie within the above described tract, containing approximately **4.001 acres**, all as more particularly outlined on a plat on file in the Office of Mineral Resources, Department of Natural Resources. All bearings, distances and coordinates are based on Louisiana Coordinate System of 1927, (North or South Zone), where applicable.

NOTE: The above description of the Tract nominated for lease has been provided and corrected, where required, exclusively by the nomination party. Any mineral lease selected from this Tract and awarded by the Louisiana State Mineral Board shall be without warranty of any kind, either express, implied, or statutory, including, but not limited to, the implied warranties of merchantability and fitness for a particular purpose. Should the mineral lease awarded by the Louisiana State Mineral Board be subsequently modified, cancelled or abrogated due to the existence of conflicting leases, operating agreements, private claims or other future obligations or conditions which may affect all or any portion of the leased Tract, it shall not relieve the Lessee of the obligation to pay any bonus due thereon to the Louisiana State Mineral Board, nor shall the Louisiana State Mineral Board be obligated to refund any consideration paid by the Lessor prior to such modification, cancellation, or abrogation, including, but not limited to, bonuses, rentals and royalties.

Bidder	Cash Payment	Price/Acre	Rental	Oil	Gas	Other

Applicant: Theophilus Oil, Gas & Land Services, LLC



BOSSIER PARISH



SL 17732

T16N - R11W



RED CHUTE BAYOU

SL 13190

SL 5849

P.O.B.
X=1,679,900.00
Y=614,200.00

TRACT 36593 - Bossier Parish, Louisiana

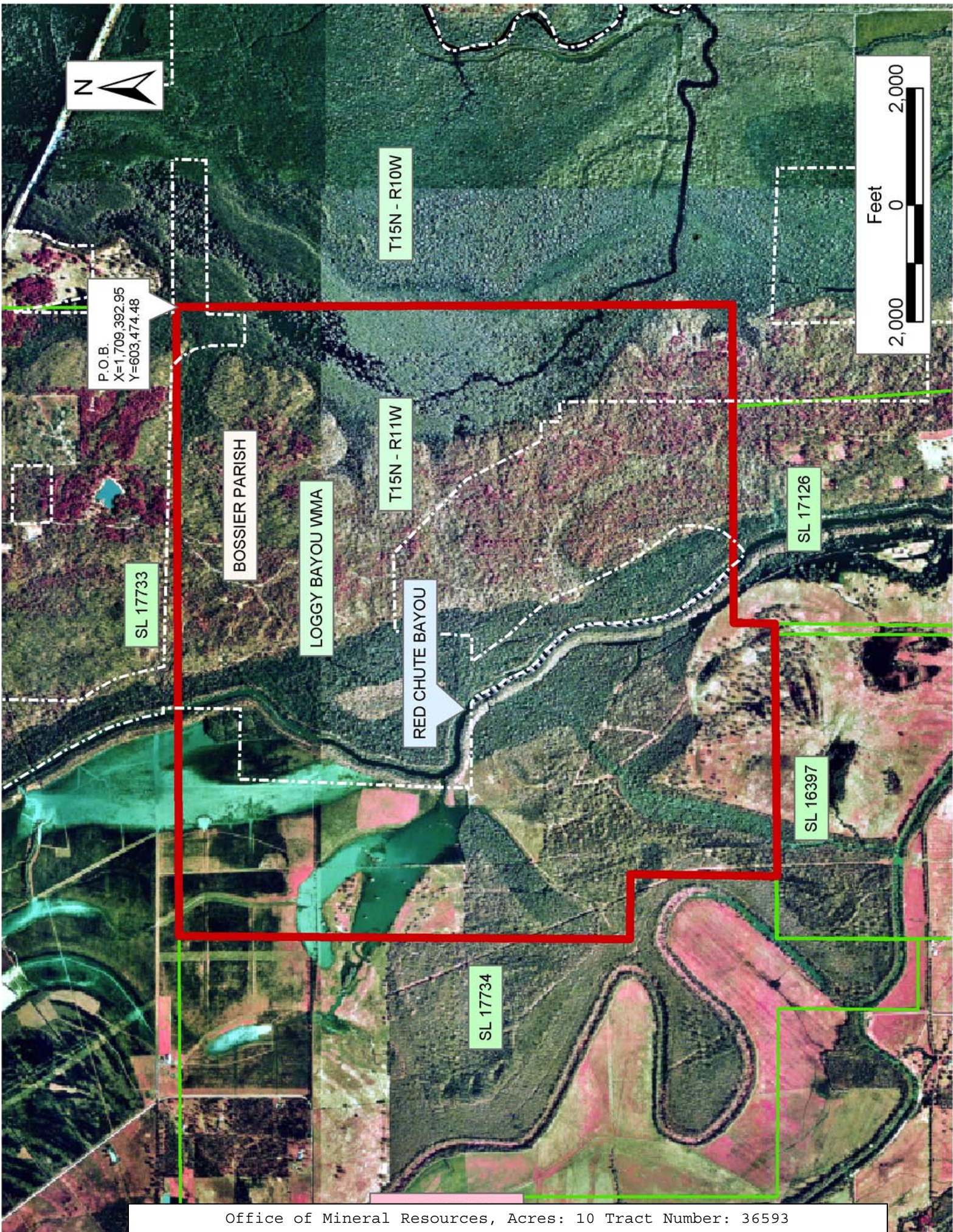
All of the lands now or formerly constituting the beds and bottoms of all water bodies of every nature and description the title of which vests in the State of Louisiana, together with all islands arising therein and other lands formed by accretion or by reliction, where allowed by law, excepting tax adjudicated lands, and not presently under mineral lease on September 8, 2004, situated in Bossier Parish, Louisiana, and more particularly described as follows: Beginning at the Southeast corner of State Lease No. 17733, having Coordinates of X = 1,709,392.95 and Y = 603,474.48; thence South 9,534.78 feet to a point having Coordinates of X = 1,709,392.95 and Y = 593,939.70; thence West 1,750.85 feet to the Northeast corner of State Lease No. 17126, having Coordinates of X = 1,707,642.10 and Y = 593,939.70; thence along the boundary of said State Lease No. 17126 the following courses: South 89 degrees 59 minutes 49 seconds West 3,716.30 feet and South 00 degrees 47 minutes 02 seconds West 705.67 feet to a point having Coordinates of X = 1,703,916.15 and Y = 593,233.90; thence Westerly approximately 98 feet to the Northeast corner of State Lease No. 16397, as amended; thence Westerly on the North line of said State Lease No. 16397 to the point of intersection with a North South line having a Coordinate of X = 1,699,585.82; thence Northerly approximately 21 feet to the most Easterly, Southeast corner of State Lease No. 17734, having Coordinates of X = 1,699,585.82 and Y = 593,233.04; thence along the boundary of said State Lease No. 17734 the following courses: North 01 degrees 02 minutes 45 seconds East 2,496.07 feet, North 89 degrees 07 minutes 23 seconds West 1,119.24 feet, and North 00 degrees 41 minutes 32 seconds East 7,729.22 feet to its Northeast corner and a point on the South line of said State Lease No. 17733, having Coordinates of X = 1,698,605.65 and Y = 603,474.48; thence East 10,787.30 feet on the South line of said State Lease No. 17733, to the point of beginning, **LESS AND EXCEPT** any portion, if any, which may lie within State Lease No. 16397 and any portion lying within the boundaries of the Loggy Bayou Wildlife Management Area, containing approximately **10 acres**, all as more particularly outlined on a plat on file in the Office of Mineral Resources, Department of Natural Resources. All bearings, distances and coordinates are based on Louisiana Coordinate System of 1927, (North or South Zone), where applicable.

NOTE: The above description of the Tract nominated for lease has been provided and corrected, where required, exclusively by the nomination party. Any mineral lease selected from this Tract and awarded by the Louisiana State Mineral Board shall be without warranty of any kind, either express, implied, or statutory, including, but not limited to, the implied warranties of merchantability and fitness for a particular purpose. Should the mineral lease awarded by the Louisiana State Mineral Board be subsequently modified, cancelled or abrogated due to the existence of conflicting leases, operating agreements, private claims or other future obligations or conditions which may affect all or any portion of the leased Tract, it shall not relieve the Lessee of the obligation to pay any bonus due thereon to the Louisiana State Mineral Board, nor shall

the Louisiana State Mineral Board be obligated to refund any consideration paid by the Lessor prior to such modification, cancellation, or abrogation, including, but not limited to, bonuses, rentals and royalties.

Applicant: Hunter Energy Corporation

Bidder	Cash Payment	Price/Acre	Rental	Oil	Gas	Other



TRACT 36594 - Portion of Block 14, North Lake Borgne Area, St. Bernard Parish, Louisiana

All of the lands now or formerly constituting the beds and bottoms of all water bodies of every nature and description the title of which vests in the State of Louisiana, together with all islands arising therein and other lands formed by accretion or by reliction, where allowed by law, excepting tax adjudicated lands, and not presently under mineral lease on September 8, 2004, situated in St. Bernard Parish, Louisiana, and more particularly described as follows: Beginning at a point on the South line of Block 14, North Lake Borgne Area, having Coordinates of X = 2,613,250.00 and Y = 529,958.70; thence North 9,000.00 feet to a point on the North line of said Block 14 having Coordinates of X = 2,613,250.00 and Y = 538,958.70; thence East 12,000.00 feet on the North line of said Block 14 to its Northeast corner having Coordinates of X = 2,625,250.00 and Y = 538,958.70; thence South 9,000.00 feet on the East line of said Block 14 to its Southeast corner having Coordinates of X = 2,625,250.00 and Y = 529,958.70; thence West 12,000.00 feet on the South line of said Block 14 to the point of beginning, containing approximately **2,479.34 acres**, all as more particularly outlined on a plat on file in the Office of Mineral Resources, Department of Natural Resources. All bearings, distances and coordinates are based on Louisiana Coordinate System of 1927, (North or South Zone), where applicable.

NOTE: The above description of the Tract nominated for lease has been provided and corrected, where required, exclusively by the nomination party. Any mineral lease selected from this Tract and awarded by the Louisiana State Mineral Board shall be without warranty of any kind, either express, implied, or statutory, including, but not limited to, the implied warranties of merchantability and fitness for a particular purpose. Should the mineral lease awarded by the Louisiana State Mineral Board be subsequently modified, cancelled or abrogated due to the existence of conflicting leases, operating agreements, private claims or other future obligations or conditions which may affect all or any portion of the leased Tract, it shall not relieve the Lessee of the obligation to pay any bonus due thereon to the Louisiana State Mineral Board, nor shall the Louisiana State Mineral Board be obligated to refund any consideration paid by the Lessor prior to such modification, cancellation, or abrogation, including, but not limited to, bonuses, rentals and royalties.

NOTE: The Office of Mineral Resources will require a minimum bonus of \$130 per acre and a minimum royalty of 21%.

NOTE: The State of Louisiana does hereby reserve, and this lease shall be subject to, the imprescriptible right of surface use in the nature of a servitude in favor of the Department of Natural Resources, including its Offices and Commissions, for the sole purpose of implementing, constructing, servicing and maintaining approved coastal zone management and/or restoration projects. Utilization of any and all rights derived under this lease by the mineral lessee, its agents, successors or assigns,

shall not interfere with nor hinder the reasonable surface use by the Department of Natural Resources, its Offices or Commissions, as herein above reserved.

Applicant: Kare-Sue Energy, Inc.

Bidder	Cash Payment	Price/Acre	Rental	Oil	Gas	Other

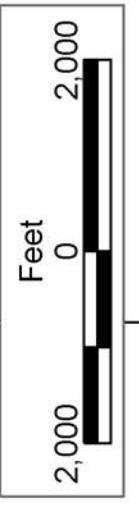


ST BERNARD PARISH

NORTH LAKE BORGNE AREA

BLOCK LB0019

BLOCK LB0014



P.O.B.
X=2,613,250.00
Y=529,958.70

TRACT 36595 - Portion of Block 19, North Lake Borgne Area, St. Bernard Parish, Louisiana

All of the lands now or formerly constituting the beds and bottoms of all water bodies of every nature and description the title of which vests in the State of Louisiana, together with all islands arising therein and other lands formed by accretion or by reliction, where allowed by law, excepting tax adjudicated lands, and not presently under mineral lease on September 8, 2004, situated in St. Bernard Parish, Louisiana, and more particularly described as follows: Beginning at a point on the South line of Block 19, North Lake Borgne Area, having Coordinates of X = 2,637,250.00 and Y = 529,958.70; thence West 12,000.00 feet on the South line of said Block 19 to its Southwest corner having Coordinates of X = 2,625,250.00 and Y = 529,958.70; thence North 9,000.00 feet on the West line of said Block 19 to its Northwest corner having Coordinates of X = 2,625,250.00 and Y = 538,958.70; thence East 12,000.00 feet on the North line of said Block 13 to a point having Coordinates of X = 2,637,250.00 and Y = 538,958.70; thence South 9,000.00 feet to the point of beginning, containing approximately **2,479.34 acres**, all as more particularly outlined on a plat on file in the Office of Mineral Resources, Department of Natural Resources. All bearings, distances and coordinates are based on Louisiana Coordinate System of 1927, (North or South Zone), where applicable.

NOTE: The above description of the Tract nominated for lease has been provided and corrected, where required, exclusively by the nomination party. Any mineral lease selected from this Tract and awarded by the Louisiana State Mineral Board shall be without warranty of any kind, either express, implied, or statutory, including, but not limited to, the implied warranties of merchantability and fitness for a particular purpose. Should the mineral lease awarded by the Louisiana State Mineral Board be subsequently modified, cancelled or abrogated due to the existence of conflicting leases, operating agreements, private claims or other future obligations or conditions which may affect all or any portion of the leased Tract, it shall not relieve the Lessee of the obligation to pay any bonus due thereon to the Louisiana State Mineral Board, nor shall the Louisiana State Mineral Board be obligated to refund any consideration paid by the Lessor prior to such modification, cancellation, or abrogation, including, but not limited to, bonuses, rentals and royalties.

NOTE: The Office of Mineral Resources will require a minimum bonus of \$130 per acre and a minimum royalty of 21%.

NOTE: The State of Louisiana does hereby reserve, and this lease shall be subject to, the imprescriptible right of surface use in the nature of a servitude in favor of the Department of Natural Resources, including its Offices and Commissions, for the sole purpose of implementing, constructing, servicing and maintaining approved coastal zone management and/or restoration projects. Utilization of any and all rights derived under this lease by the mineral lessee, its agents, successors or assigns,

shall not interfere with nor hinder the reasonable surface use by the Department of Natural Resources, its Offices or Commissions, as herein above reserved.

Applicant: Kare-Sue Energy, Inc.

Bidder	Cash Payment	Price/Acre	Rental	Oil	Gas	Other



ST BERNARD PARISH

BLOCK LB0018

NORTH LAKE BORGNE AREA

BLOCK LB0019

BLOCK LB0020

BLOCK LB0014

P.O.B.
X=2,637,250.00
Y=529,958.70



TRACT 36596 - Portion of Block 11, North Lake Borgne Area, St. Bernard Parish, Louisiana

All of the lands now or formerly constituting the beds and bottoms of all water bodies of every nature and description the title of which vests in the State of Louisiana, together with all islands arising therein and other lands formed by accretion or by reliction, where allowed by law, excepting tax adjudicated lands, and not presently under mineral lease on September 8, 2004, situated in St. Bernard Parish, Louisiana, and more particularly described as follows: Beginning at the Southwest corner of Block 11, North Lake Borgne Area, having Coordinates of X = 2,589,250.00 and Y = 529,958.70; thence North 9,000.00 feet on the West line of said Block 11 to its Northwest corner having Coordinates of X = 2,589,250.00 and Y = 538,958.70; thence East 12,000.00 feet on the North line of said Block 11 to a point having Coordinates of X = 2,601,250.00 and Y = 538,958.70; thence South 9,000.00 feet to a point on its South line having Coordinates of X = 2,601,250.00 and Y = 529,958.70; thence West 12,000.00 feet on the South line of said Block 11 to the point of beginning, containing approximately **2,243 acres**, all as more particularly outlined on a plat on file in the Office of Mineral Resources, Department of Natural Resources. All bearings, distances and coordinates are based on Louisiana Coordinate System of 1927, (North or South Zone), where applicable.

NOTE: The above description of the Tract nominated for lease has been provided and corrected, where required, exclusively by the nomination party. Any mineral lease selected from this Tract and awarded by the Louisiana State Mineral Board shall be without warranty of any kind, either express, implied, or statutory, including, but not limited to, the implied warranties of merchantability and fitness for a particular purpose. Should the mineral lease awarded by the Louisiana State Mineral Board be subsequently modified, cancelled or abrogated due to the existence of conflicting leases, operating agreements, private claims or other future obligations or conditions which may affect all or any portion of the leased Tract, it shall not relieve the Lessee of the obligation to pay any bonus due thereon to the Louisiana State Mineral Board, nor shall the Louisiana State Mineral Board be obligated to refund any consideration paid by the Lessor prior to such modification, cancellation, or abrogation, including, but not limited to, bonuses, rentals and royalties.

NOTE: The Office of Mineral Resources will require a minimum bonus of \$130 per acre and a minimum royalty of 21%.

NOTE: The State of Louisiana does hereby reserve, and this lease shall be subject to, the imprescriptible right of surface use in the nature of a servitude in favor of the Department of Natural Resources, including its Offices and Commissions, for the sole purpose of implementing, constructing, servicing and maintaining approved coastal zone management and/or restoration projects. Utilization of any and all rights derived under this lease by the mineral lessee, its agents, successors or assigns, shall not interfere with nor hinder the reasonable surface use by the

Department of Natural Resources, its Offices or Commissions, as herein above reserved.

Applicant: Kare-Sue Energy, Inc.

Bidder	Cash Payment	Price/Acre	Rental	Oil	Gas	Other



T10S - R18E

T11S - R18E

ST BERNARD PARISH

BLOCK LB0010

NORTH LAKE BORGNE AREA

BLOCK LB0011

BLOCK LB0012

BLOCK LB0008

P.O.B.
X=-2,589,250.00
Y=529,958.70

Feet

2,000

0

2,000

TRACT 36597 - Portion of Blocks 11, and 14, North Lake Borgne Area, St. Bernard Parish, Louisiana

All of the lands now or formerly constituting the beds and bottoms of all water bodies of every nature and description the title of which vests in the State of Louisiana, together with all islands arising therein and other lands formed by accretion or by reliction, where allowed by law, excepting tax adjudicated lands, and not presently under mineral lease on September 8, 2004, situated in St. Bernard Parish, Louisiana, and more particularly described as follows: Beginning at a point on the South line of Block 14, North Lake Borgne Area, having Coordinates of X = 2,613,250.00 and Y = 529,958.70; thence West 6,000.00 feet on the South line of said Block 14 to its Southwest corner, and the Southeast corner of Block 11, North Lake Borgne Area, having Coordinates of X = 2,607,250.00 and Y = 529,958.70; thence West 6,000.00 feet on the South line of said Block 11 to a point having Coordinates of X = 2,601,250.00 and Y = 529,958.70; thence North 9,000.00 feet to a point on the North line of said Block 11 having Coordinates of X = 2,601,250.00 and Y = 538,958.70; thence East 6,000.00 feet on the North line of said Block 11 to its Northeast corner, and the Northwest corner of said Block 14 having Coordinates of X = 2,607,250.00 and Y = 538,958.70; thence East 6,000.00 feet on the North line of said Block 14 to a point having Coordinates of X = 2,613,250.00 and Y = 538,958.70; thence South 9,000.00 feet to the point of beginning, containing approximately **2,374 acres**, all as more particularly outlined on a plat on file in the Office of Mineral Resources, Department of Natural Resources. All bearings, distances and coordinates are based on Louisiana Coordinate System of 1927, (North or South Zone), where applicable.

NOTE: The above description of the Tract nominated for lease has been provided and corrected, where required, exclusively by the nomination party. Any mineral lease selected from this Tract and awarded by the Louisiana State Mineral Board shall be without warranty of any kind, either express, implied, or statutory, including, but not limited to, the implied warranties of merchantability and fitness for a particular purpose. Should the mineral lease awarded by the Louisiana State Mineral Board be subsequently modified, cancelled or abrogated due to the existence of conflicting leases, operating agreements, private claims or other future obligations or conditions which may affect all or any portion of the leased Tract, it shall not relieve the Lessee of the obligation to pay any bonus due thereon to the Louisiana State Mineral Board, nor shall the Louisiana State Mineral Board be obligated to refund any consideration paid by the Lessor prior to such modification, cancellation, or abrogation, including, but not limited to, bonuses, rentals and royalties.

NOTE: The Office of Mineral Resources will require a minimum bonus of \$130 per acre and a minimum royalty of 21%.

NOTE: The State of Louisiana does hereby reserve, and this lease shall be subject to, the imprescriptible right of surface use in the nature of a

servitude in favor of the Department of Natural Resources, including its Offices and Commissions, for the sole purpose of implementing, constructing, servicing and maintaining approved coastal zone management and/or restoration projects. Utilization of any and all rights derived under this lease by the mineral lessee, its agents, successors or assigns, shall not interfere with nor hinder the reasonable surface use by the Department of Natural Resources, its Offices or Commissions, as herein above reserved.

Applicant: Kare-Sue Energy, Inc.

Bidder	Cash Payment	Price/Acre	Rental	Oil	Gas	Other



NORTH LAKE BORGNE AREA

ST BERNARD PARISH

T11S - R18E



BLOCK LB0014

BLOCK LB0011

P.O.B.
X=2,613,250.00
Y=529,958.70



TRACT 36598 - Portion of Block 8, North Lake Borgne Area, St. Bernard Parish, Louisiana

All of the lands now or formerly constituting the beds and bottoms of all water bodies of every nature and description the title of which vests in the State of Louisiana, together with all islands arising therein and other lands formed by accretion or by reliction, where allowed by law, excepting tax adjudicated lands, and not presently under mineral lease on September 8, 2004, situated in St. Bernard Parish, Louisiana, and more particularly described as follows: Beginning at the Southeast corner of Block 8, North Lake Borgne Area, having Coordinates of X = 2,589,250.00 and Y = 529,958.70; thence West 11,039.85 feet on the South line of said Block 8 to a point having Coordinates of X = 2,578,210.15 and Y = 529,958.70; thence North 9,000.00 feet to a point on the North line of said Block 8 having Coordinates of X = 2,578,210.15 and Y = 538,958.70; thence East 11,039.85 feet on the North line of said Block 8 to its Northeast corner having Coordinates of X = 2,589,250.00 and Y = 538,958.70; thence South 9,000.00 feet on the East line said Block 8 to the point of beginning, containing approximately **2,280.96 acres**, all as more particularly outlined on a plat on file in the Office of Mineral Resources, Department of Natural Resources. All bearings, distances and coordinates are based on Louisiana Coordinate System of 1927, (North or South Zone), where applicable.

NOTE: The above description of the Tract nominated for lease has been provided and corrected, where required, exclusively by the nomination party. Any mineral lease selected from this Tract and awarded by the Louisiana State Mineral Board shall be without warranty of any kind, either express, implied, or statutory, including, but not limited to, the implied warranties of merchantability and fitness for a particular purpose. Should the mineral lease awarded by the Louisiana State Mineral Board be subsequently modified, cancelled or abrogated due to the existence of conflicting leases, operating agreements, private claims or other future obligations or conditions which may affect all or any portion of the leased Tract, it shall not relieve the Lessee of the obligation to pay any bonus due thereon to the Louisiana State Mineral Board, nor shall the Louisiana State Mineral Board be obligated to refund any consideration paid by the Lessor prior to such modification, cancellation, or abrogation, including, but not limited to, bonuses, rentals and royalties.

NOTE: The Office of Mineral Resources will require a minimum bonus of \$150 per acre and a minimum royalty of 21%.

NOTE: The State of Louisiana does hereby reserve, and this lease shall be subject to, the imprescriptible right of surface use in the nature of a servitude in favor of the Department of Natural Resources, including its Offices and Commissions, for the sole purpose of implementing, constructing, servicing and maintaining approved coastal zone management and/or restoration projects. Utilization of any and all rights derived under this lease by the mineral lessee, its agents, successors or assigns,

shall not interfere with nor hinder the reasonable surface use by the Department of Natural Resources, its Offices or Commissions, as herein above reserved.

NOTE: The Department of Wildlife and Fisheries has designated certain areas in the coastal waters of the State of Louisiana as Oyster Seed Bed Areas. The exact location of those Seed Bed Areas must be obtained from the Department of Wildlife and Fisheries and any work done under a mineral lease from the State of Louisiana may necessarily be conducted in conformity with the rules and regulations promulgated by the said Department of Wildlife and Fisheries for Oyster Seed Bed Areas.

Applicant: Kare-Sue Energy, Inc.

Bidder	Cash Payment	Price/Acre	Rental	Oil	Gas	Other



ST BERNARD PARISH

BLOCK LB0011

BLOCK LB0008

P.O.B.
X=2,589,250.00
Y=529,958.70

NORTH LAKE BORGNE AREA



TRACT 36599 - Portion of Block 13, North Lake Borgne Area, St. Bernard Parish, Louisiana

All of the lands now or formerly constituting the beds and bottoms of all water bodies of every nature and description the title of which vests in the State of Louisiana, together with all islands arising therein and other lands formed by accretion or by reliction, where allowed by law, excepting tax adjudicated lands, and not presently under mineral lease on September 8, 2004, situated in St. Bernard Parish, Louisiana, and more particularly described as follows: Beginning at a point on the North line of Block 13, North Lake Borgne Area, having Coordinates of X = 2,613,250.00 and Y = 529,958.70; thence East 12,000.00 feet on the North line of said Block 13 to its Northeast corner having Coordinates of X = 2,625,250.00 and Y = 529,958.70; thence South 9,000.00 feet on the East line of said Block 13 to its Southeast corner having Coordinates of X = 2,625,250.00 and Y = 520,958.70; thence West 12,000.00 feet on the South line of said Block 13 to a point having Coordinates of X = 2,613,250.00 and Y = 520,958.70; thence North 9,000.00 feet to the point of beginning, containing approximately **2,479.34 acres**, all as more particularly outlined on a plat on file in the Office of Mineral Resources, Department of Natural Resources. All bearings, distances and coordinates are based on Louisiana Coordinate System of 1927, (North or South Zone), where applicable.

NOTE: The above description of the Tract nominated for lease has been provided and corrected, where required, exclusively by the nomination party. Any mineral lease selected from this Tract and awarded by the Louisiana State Mineral Board shall be without warranty of any kind, either express, implied, or statutory, including, but not limited to, the implied warranties of merchantability and fitness for a particular purpose. Should the mineral lease awarded by the Louisiana State Mineral Board be subsequently modified, cancelled or abrogated due to the existence of conflicting leases, operating agreements, private claims or other future obligations or conditions which may affect all or any portion of the leased Tract, it shall not relieve the Lessee of the obligation to pay any bonus due thereon to the Louisiana State Mineral Board, nor shall the Louisiana State Mineral Board be obligated to refund any consideration paid by the Lessor prior to such modification, cancellation, or abrogation, including, but not limited to, bonuses, rentals and royalties.

NOTE: The Office of Mineral Resources will require a minimum bonus of \$130 per acre and a minimum royalty of 21%.

NOTE: The State of Louisiana does hereby reserve, and this lease shall be subject to, the imprescriptible right of surface use in the nature of a servitude in favor of the Department of Natural Resources, including its Offices and Commissions, for the sole purpose of implementing, constructing, servicing and maintaining approved coastal zone management and/or restoration projects. Utilization of any and all rights derived under this lease by the mineral lessee, its agents, successors or assigns,

shall not interfere with nor hinder the reasonable surface use by the Department of Natural Resources, its Offices or Commissions, as herein above reserved.

Applicant: Kare-Sue Energy, Inc.

Bidder	Cash Payment	Price/Acre	Rental	Oil	Gas	Other



ST BERNARD PARISH

P.O.B.
X=2,613,250.00
Y=529,958.70

NORTH LAKE BORGNE AREA

BLOCK LB0013

BLOCK LB0020

