

TRACT 35662 - Jefferson Parish, Louisiana

All of the land adjudicated to and acquired by the State of Louisiana in and through a proper tax sale, including surface and mineral rights, owned by and not already under valid mineral lease from the State of Louisiana on September 10, 2003, situated in Jefferson Parish, Louisiana, and being more fully described as follows: Beginning at a point having Coordinates of X = 2,349,677.61 and Y = 453,712.87; thence East 12,920.94 feet to a point having Coordinates of X = 2,362,598.55 and Y = 453,712.87; thence South 7,212.45 feet to a point having Coordinates of X = 2,362,598.55 and Y = 446,500.42; thence West 12,920.94 feet to a point having Coordinates of X = 2,349,677.61 and Y = 446,500.42; thence North 7,212.45 feet to the point of beginning. More specifically containing the following Tax Adjudicated properties: A certain tract of land adjudicated to the State of Louisiana in 1980 for a 1979 assessment, standing in the name of Opal Clayool, in accordance with adjudication to the State of Louisiana and being further described as Lot 35, Square 5, Section II, Avondale Homes, containing approximately **0.21 acres**. A certain tract of land adjudicated to the State of Louisiana in 1984 for a 1983 assessment, standing in the name of Kate Bordelon et al, in accordance with adjudication to the State of Louisiana and being further described as Lots 69 and 70, Block 3, Avondale Gardens, containing approximately **0.18 acres**. A certain tract of land adjudicated to the State of Louisiana in 1986 for a 1985 assessment, standing in the name of Roger M. Lehman, in accordance with adjudication to the State of Louisiana and being further described as Lot 42, Square 16, Section 3, Avondale Homes, containing approximately **0.14 acres**. A certain tract of land adjudicated to the State of Louisiana in 1986 for a 1985 assessment, standing in the name of Rosalie Park Apt. Partnership, in accordance with adjudication to the State of Louisiana and being further described as Lots 1A, 2A, 3AB, 4A, 7AB, 8A and 10AB1, Square 1, Section 1, South Avondale Homes, containing approximately **1.40 acres**. A certain tract of land adjudicated to the State of Louisiana in 1987 for a 1986 assessment, standing in the name of Lauers Avondale Supermarket, in accordance with adjudication to the State of Louisiana and being further described as Lot X-A-3, South Avondale Homes, containing approximately **0.23 acres**. A certain tract of land adjudicated to the State of Louisiana in 1986 for a 1985 assessment, standing in the name of Vina Construction, Inc., in accordance with adjudication to the State of Louisiana and being further described as Lot 25, Square 40, South Avondale Homes, Phase A, containing approximately **0.13 acres**. A certain tract of land adjudicated to the State of Louisiana in 1986 for a 1985 assessment, standing in the name of Vina Construction, Inc., in accordance with adjudication to the State of Louisiana and being further described as Lot 26, Square 40, South Avondale Homes, Phase A, containing approximately **0.13 acres**. A certain tract of land adjudicated to the State of Louisiana in 1986 for a 1985 assessment, standing in the name of Vina Construction, Inc., in accordance with adjudication to the State of Louisiana and being further described as Lot 27, Square 40, South Avondale Homes, Phase A, containing approximately **0.13 acres**. A certain tract of land adjudicated to the State of Louisiana in 1986 for a 1985 assessment, standing in the name of Vina Construction,

Inc., in accordance with adjudication to the State of Louisiana and being further described as Lot 28, Square 40, South Avondale Homes, Phase A, containing approximately **0.13 acres**. A certain tract of land adjudicated to the State of Louisiana in 1986 for a 1985 assessment, standing in the name of Vina Construction, Inc., in accordance with adjudication to the State of Louisiana and being further described as Lot 29, Square 40, South Avondale Homes, Phase A, containing approximately 0.13 acres, more or less. A certain tract of land adjudicated to the State of Louisiana in 1986 for a 1985 assessment, standing in the name of Hugh and Jacqueline Drayton, Inc., in accordance with adjudication to the State of Louisiana and being further described as Lot 23 B, Square 7, South Avondale Homes, Phase A, containing approximately **0.12 acres**. A certain tract of land adjudicated to the State of Louisiana in 1983 for a 1982 assessment, standing in the name of Opal H. Brown, Inc., in accordance with adjudication to the State of Louisiana and being further described as Lot 35, Square 5, Section 2, South Avondale Homes, Phase A, containing approximately **0.13 acres**. Containing an aggregate **3.06 acres**, all as more particularly outlined on a plat on file in the Office of Mineral Resources, Department of Natural Resources. All bearings, distances and coordinates are based on Louisiana Coordinate System of 1927, (North or South Zone), where applicable.

NOTE: "No portion bid will be accepted on this tract."

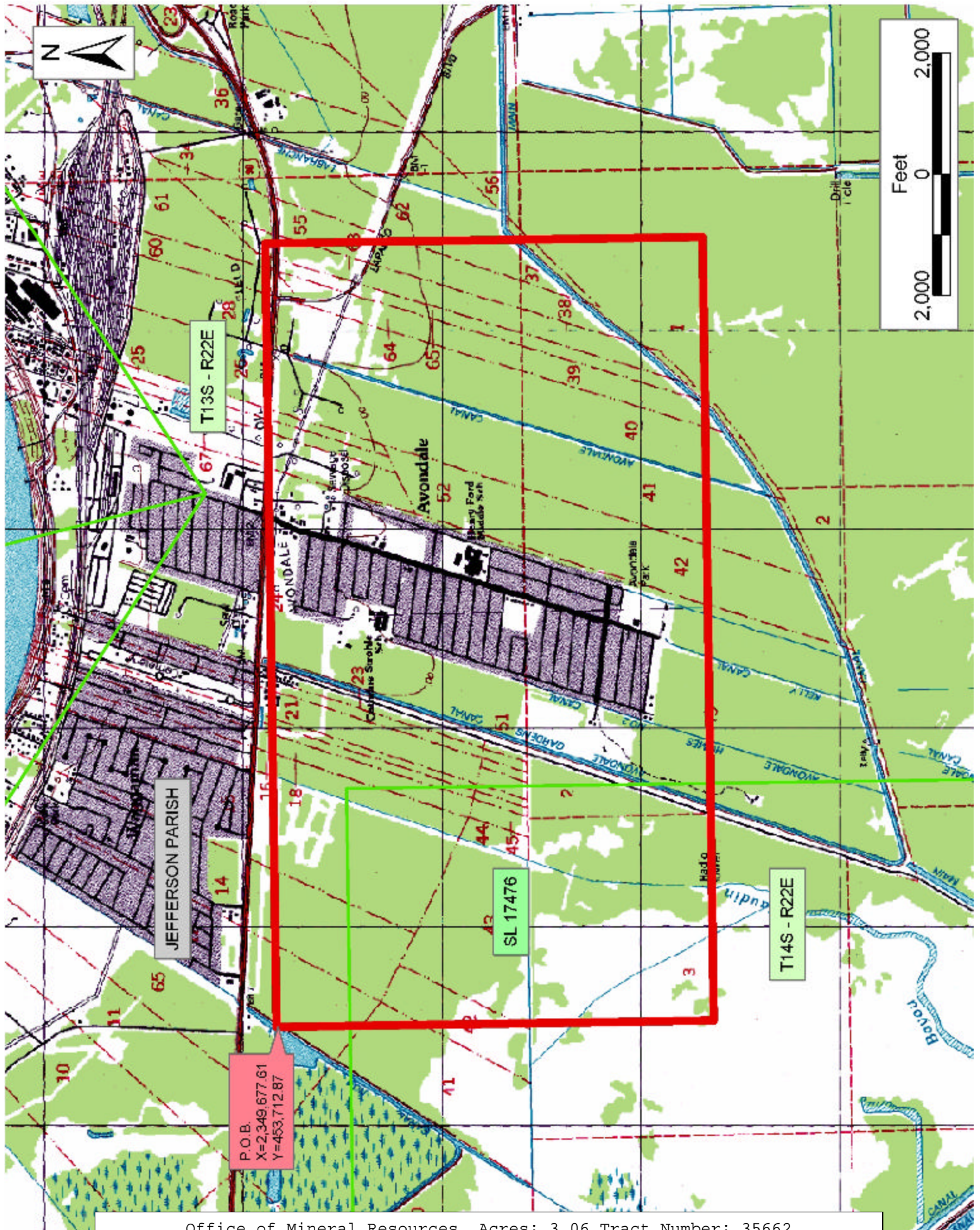
NOTE: The above description of the Tract nominated for lease has been provided and corrected, where required, exclusively by the nomination party. Any mineral lease selected from this Tract and awarded by the Louisiana State Mineral Board shall be without warranty of any kind, either express, implied, or statutory, including, but not limited to, the implied warranties of merchantability and fitness for a particular purpose. Should the mineral lease awarded by the Louisiana State Mineral Board be subsequently modified, cancelled or abrogated due to the existence of conflicting leases, operating agreements, private claims or other future obligations or conditions which may affect all or any portion of the leased Tract, it shall not relieve the Lessee of the obligation to pay any bonus due thereon to the Louisiana State Mineral Board, nor shall the Louisiana State Mineral Board be obligated to refund any consideration paid by the Lessor prior to such modification, cancellation, or abrogation, including, but not limited to, bonuses, rentals and royalties.

NOTE: The State of Louisiana does hereby reserve, and this lease shall be subject to, the imprescriptible right of surface use in the nature of a servitude in favor of the Department of Natural Resources, including its Offices and Commissions, for the sole purpose of implementing, constructing, servicing and maintaining approved coastal zone management and/or restoration projects. Utilization of any and all rights derived under this lease by the mineral lessee, its agents, successors or assigns, shall not interfere with nor hinder the reasonable surface use by the

Department of Natural Resources, its Offices or Commissions, as herein above reserved.

Applicant: Chris Roy

Bidder	Cash Payment	Price/ Acre	Rental	Oil	Gas	Other



TRACT 35663 - Jefferson Parish, Louisiana

All of the land adjudicated to and acquired by the State of Louisiana in and through a proper tax sale, including surface and mineral rights, owned by and not already under valid mineral lease from the State of Louisiana on September 10, 2003, situated in Jefferson Parish, Louisiana, and being more fully described as follows: Beginning at a point having Coordinates of X = 2,381,065.45, Y = 453,230.92; thence East 3,822.24 feet to a point having Coordinates of X = 2,384,887.69, Y = 453,230.92; thence South 8,131.62 feet to a point having Coordinates of X = 2,384,887.69, Y = 445,099.30; thence West 3,822.24 feet to a point having Coordinates of X = 2,381,065.45, Y = 445,099.30; thence North 8,131.62 feet to the point of beginning. More specifically containing the following Tax Adjudicated properties: A certain tract of land adjudicated to the State of Louisiana in 1933 for a 1932 assessment, standing in the name of Richard Chalone, in accordance with adjudication to the State of Louisiana and being further described as Lot 25, Addition A, Townsite #1, Ames Farms Subdivision, containing approximately **0.14 acres**. A certain tract of land adjudicated to the State of Louisiana in 1945 for a 1944 assessment, standing in the name of Charles Carter, in accordance with adjudication to the State of Louisiana and being further described as Lots 12 & 13, Block 1, Townsite #1, Ames Farms, containing approximately **0.28 acres**. A certain tract of land adjudicated to the State of Louisiana in 1988 for a 1987 assessment standing in the name of William Jones, in accordance with adjudication to the State of Louisiana and being further described as Lot 15, Block 1, Townsite #1, Ames Farms Subdivision, containing approximately **0.14 acres**. A certain tract of land adjudicated to the State of Louisiana in 1933 for a 1932 assessment, standing in the name of Samuel Casimere Jr., in accordance with adjudication to the State of Louisiana and being further described as Lot 23, Addition A, Townsite #1, Ames Farms Subdivision, containing approximately **0.14 acres**. A certain tract of land adjudicated to the State of Louisiana in 1929 for a 1928 assessment, standing in the name of Thalien J. Bondreaux, in accordance with adjudication to the State of Louisiana and being further described as Lot 5, Pritchard Place, Ames Farms, containing approximately **0.13 acres**. A certain tract of land adjudicated to the State of Louisiana in 1987 for a 1986 assessment, standing in the name of Joseph Calegan, in accordance with adjudication to the State of Louisiana and being further described as Lot 6-A, Square F, Evergreen Ext, containing approximately **0.09 acres**. A certain tract of land adjudicated to the State of Louisiana in 1987 for a 1987 assessment, standing in the name of Joseph Calegan, in accordance with adjudication to the State of Louisiana and being further described as Lot 4-A, Square F, Evergreen Ext, containing approximately **0.25 acres**. A certain tract of land adjudicated to the State of Louisiana in 1987 for a 1986 assessment, standing in the name of Joseph Calegan, in accordance with adjudication to the State of Louisiana and being further described as Lot 1-A, Square F, Evergreen Ext, containing approximately **0.15 acres**. A certain tract of land adjudicated to the State of Louisiana in 1981 for a 1980 assessment, standing in the name of Secretary of Housing, in accordance with adjudication to the State of Louisiana and being further described as Lot

6, Square N, Evergreen Subdivision, containing approximately **0.16 acres**. A certain tract of land adjudicated to the State of Louisiana in 1978 for a 1977 assessment, standing in the name of Gilbert Blanchard Builders, Inc., in accordance with adjudication to the State of Louisiana and being further described as Lot 1-A, Square S, Nicholson Place Ext., Ames Farms, containing approximately **0.14 acres**. A certain tract of land adjudicated to the State of Louisiana in 1986 for a 1985 assessment, standing in the name of John R. Johnson, in accordance with adjudication to the State of Louisiana and being further described as Lot 9, Square F, Nicholson Place, Ames Farms, containing approximately **0.14 acres**. A certain tract of land adjudicated to the State of Louisiana in 1973 for a 1972 assessment, standing in the name of Barbara M. Newman, in accordance with adjudication to the State of Louisiana and being further described as Lot B, Block 1, Scanio Subdivision, Ames Farms, containing approximately **0.11 acres**. A certain tract of land adjudicated to the State of Louisiana in 1985 for a 1984 assessment, standing in the name of Joseph & Kathleen Calegan, in accordance with adjudication to the State of Louisiana and being further described as Lot 1, Block C, Westwood Ext. #2, containing approximately **0.15 acres**. A certain tract of land adjudicated to the State of Louisiana in 1986 for a 1985 assessment, standing in the name of Michael J. Guillot, in accordance with adjudication to the State of Louisiana and being further described as Lots 7 & 8, Block C, Westwood Ext. #2, containing approximately **0.30 acres**. A certain tract of land adjudicated to the State of Louisiana in 1982 for a 1981 assessment, standing in the name of Eddie Stewart et al, in accordance with adjudication to the State of Louisiana and being further described as Lots 7 A & 8 A, Block 7, Collura Place, containing approximately **0.34 acres**. A certain tract of land adjudicated to the State of Louisiana in 1985 for a 1984 assessment, standing in the name of Herman Palmer, in accordance with adjudication to the State of Louisiana and being further described as Lot 8, Square 12, Michel Subdivision, containing approximately **0.10 acres**. A certain tract of land adjudicated to the State of Louisiana in 1934 for a 1933 assessment, standing in the name of Washington Griffin, in accordance with adjudication to the State of Louisiana and being further described as Lot 1, Addition A, Ames Farms Subdivision, containing approximately **0.09 acres**. A certain tract of land adjudicated to the State of Louisiana in 1986 for a 1985 assessment, standing in the name of Herman Palmer, in accordance with adjudication to the State of Louisiana and being further described as Lot 8, Square 12, Michel Subdivision, containing approximately **0.14 acres**. A certain tract of land adjudicated to the State of Louisiana in 1978 for a 1977 assessment, standing in the name of Gilbert Blanchard Builder, Inc., in accordance with adjudication to the State of Louisiana and being further described as Lot 1-A, Square S, Nicholson Place Subdivision, containing approximately **0.13 acres**. Containing an aggregate **3.12 acres**, all as more particularly outlined on a plat on file in the Office of Mineral Resources, Department of Natural Resources. All bearings, distances and coordinates are based on Louisiana Coordinate System of 1927, (North or South Zone), where applicable.

NOTE: "No portion bid will be accepted on this tract."

NOTE: The above description of the Tract nominated for lease has been provided and corrected, where required, exclusively by the nomination party. Any mineral lease selected from this Tract and awarded by the Louisiana State Mineral Board shall be without warranty of any kind, either express, implied, or statutory, including, but not limited to, the implied warranties of merchantability and fitness for a particular purpose. Should the mineral lease awarded by the Louisiana State Mineral Board be subsequently modified, cancelled or abrogated due to the existence of conflicting leases, operating agreements, private claims or other future obligations or conditions which may affect all or any portion of the leased Tract, it shall not relieve the Lessee of the obligation to pay any bonus due thereon to the Louisiana State Mineral Board, nor shall the Louisiana State Mineral Board be obligated to refund any consideration paid by the Lessor prior to such modification, cancellation, or abrogation, including, but not limited to, bonuses, rentals and royalties.

NOTE: The State of Louisiana does hereby reserve, and this lease shall be subject to, the imprescriptible right of surface use in the nature of a servitude in favor of the Department of Natural Resources, including its Offices and Commissions, for the sole purpose of implementing, constructing, servicing and maintaining approved coastal zone management and/or restoration projects. Utilization of any and all rights derived under this lease by the mineral lessee, its agents, successors or assigns, shall not interfere with nor hinder the reasonable surface use by the Department of Natural Resources, its Offices or Commissions, as herein above reserved.

Applicant: Chris Roy

Bidder	Cash Payment	Price/ Acre	Rental	Oil	Gas	Other

TRACT 35664 - Jefferson Parish, Louisiana

All of the mineral rights only under land adjudicated to and acquired by the State of Louisiana in and through a proper tax sale, and subsequently alienated by the State which retained the mineral rights thereto, and which is not under valid mineral lease from the State of Louisiana on September 10, 2003, situated in Jefferson Parish, Louisiana, and being more fully described as follows: Beginning at a point having Coordinates of X = 2,381,065.45, Y = 453,230.92; thence East 3,822.24 feet to a point having Coordinates of X = 2,384,887.69, Y = 453,230.92; thence South 8,131.62 feet to a point having Coordinates of X = 2,384,887.69, Y = 445,099.30; thence West 3,822.24 feet to a point having Coordinates of X = 2,381,065.45, Y = 445,099.30; thence North 8,131.62 feet to the point of beginning. More specifically containing the following Tax Adjudicated properties: A certain tract of land adjudicated to the State of Louisiana in 1938 for a 1937 assessment, standing in the name of Daniel J. Gurstmer, in accordance with adjudication to the State of Louisiana and being further described as Lot 13, Pritchard Place, Ames Farms, containing approximately **0.15 acres**, and being that same tract of land referred to in the State of Louisiana Patent No. 13364. A certain tract of land adjudicated to the State of Louisiana in 1936 for a 1935 assessment, standing in the name of Luther Tinsley, in accordance with adjudication to the State of Louisiana and being further described as Lot 33, Block D, Nicholson Place, containing approximately **0.14 acres**, and being that same tract of land referred to in the State of Louisiana Patent No. 17273. A certain tract of land adjudicated to the State of Louisiana in 1930 for a 1929 assessment, standing in the name of Frank Wheeler, in accordance with adjudication to the State of Louisiana and being further described as Lot 11, Addition A, Ames Farms, containing approximately **0.14 acres**, and being that same tract of land referred to in the State of Louisiana Patent No. 17116. Containing an aggregate **0.43 acres**, all as more particularly outlined on a plat on file in the Office of Mineral Resources, Department of Natural Resources. All bearings, distances and coordinates are based on Louisiana Coordinate System of 1927, (North or South Zone), where applicable.

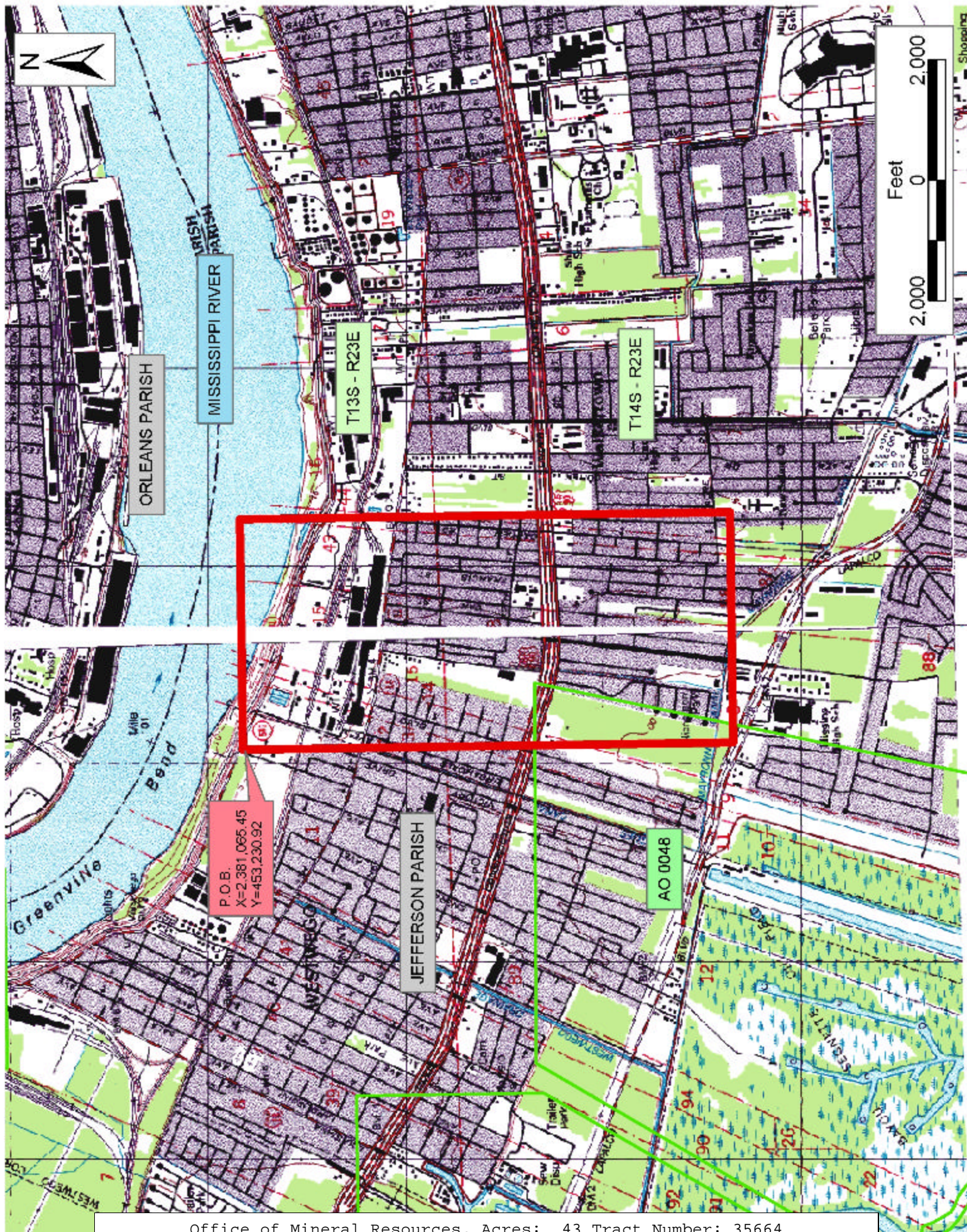
NOTE: "No portion bid will be accepted on this tract."

NOTE: The above description of the Tract nominated for lease has been provided and corrected, where required, exclusively by the nomination party. Any mineral lease selected from this Tract and awarded by the Louisiana State Mineral Board shall be without warranty of any kind, either express, implied, or statutory, including, but not limited to, the implied warranties of merchantability and fitness for a particular purpose. Should the mineral lease awarded by the Louisiana State Mineral Board be subsequently modified, cancelled or abrogated due to the existence of conflicting leases, operating agreements, private claims or other future obligations or conditions which may affect all or any portion of the leased Tract, it shall not relieve the Lessee of the obligation to pay any bonus due thereon to the Louisiana State Mineral Board, nor shall

the Louisiana State Mineral Board be obligated to refund any consideration paid by the Lessor prior to such modification, cancellation, or abrogation, including, but not limited to, bonuses, rentals and royalties.

Applicant: Chris Roy

Bidder	Cash Payment	Price/ Acre	Rental	Oil	Gas	Other



TRACT 35665 - Jefferson Parish, Louisiana

All of the land adjudicated to and acquired by the State of Louisiana in and through a proper tax sale, including surface and mineral rights, owned by and not already under valid mineral lease from the State of Louisiana on September 10, 2003, situated in Jefferson Parish, Louisiana, and being more fully described as follows: Beginning at a point having Coordinates of X = 2,384,887.69, Y = 453,230.92; thence East 4,600.37 feet to a point having Coordinates of X = 2,389,488.06, Y = 453,230.92; thence South 8,131.62 feet to a point having Coordinates of X = 2,389,488.06, Y = 445,099.30; thence West 4,600.37 feet to a point having Coordinates of X = 2,384,887.69, Y = 445,099.30; thence North 8,131.62 feet to the point of beginning. More specifically containing the following Tax Adjudicated properties: A certain tract of land adjudicated to the State of Louisiana in 1987 for a 1986 assessment, standing in the name of Alice P. Tollivar, in accordance with adjudication to the State of Louisiana and being further described as Lot 41, Walter Cohen Subdivision, containing approximately **0.07 acres**. A certain tract of land adjudicated to the State of Louisiana in 1985 for a 1984 assessment, standing in the name of Anthony J. Saladino, in accordance with adjudication to the State of Louisiana and being further described as Lot 7, Block 2, Paternostro Subdivision, containing approximately **0.21 acres**. A certain tract of land adjudicated to the State of Louisiana in 1986 for a 1985 assessment, standing in the name of Conrad J. Adams, in accordance with adjudication to the State of Louisiana and being further described as Lot 10, Block 3, Paternostro Subdivision, containing approximately **0.15 acres**. A certain tract of land adjudicated to the State of Louisiana in 1985 for a 1984 assessment, standing in the name of Aubrey P. and Joyce R. Lockett, in accordance with adjudication to the State of Louisiana and being further described as Lot 193, Walter Cohen Subdivision, containing approximately **0.11 acres**. A certain tract of land adjudicated to the State of Louisiana in 1985 for a 1984 assessment, standing in the name of Francis S. Odom, in accordance with adjudication to the State of Louisiana and being further described as Lots 153 & 154, Walter Cohen Subdivision, containing approximately **0.16 acres**. A certain tract of land adjudicated to the State of Louisiana in 1932 for a 1931 assessment, standing in the name of Mayer Isemann, in accordance with adjudication to the State of Louisiana and being further described as Lot 65, Walter Cohen Subdivision, containing approximately **0.07 acres**. A certain tract of land adjudicated to the State of Louisiana in 1933 for a 1932 assessment, standing in the name of Mrs. E. M. Conzelmann, in accordance with adjudication to the State of Louisiana and being further described as Lot 34, Addition #5, Square 4, Town site #3, Ames Farms, containing approximately **0.10 acres**. A certain tract of land adjudicated to the State of Louisiana in 1935 for a 1934 assessment, standing in the name of Mrs. Robert Knox, in accordance with adjudication to the State of Louisiana and being further described as Lot 34, Square 3, Town site #3, Ames Farms, containing approximately **0.10 acres**. A certain tract of land adjudicated to the State of Louisiana in 1944 for a 1943 assessment, standing in the name of Mrs. S. Campbell, in accordance with adjudication to the State of Louisiana and being further

described as 1/2 of Lot 36, Town site #4, Ames Farms, containing approximately **0.07 acres**. A certain tract of land adjudicated to the State of Louisiana in 1986 for a 1985 assessment, standing in the name of Charles L. Carter Sr., in accordance with adjudication to the State of Louisiana and being further described as Lots 32 & 33, Square 4, Town site #3, Ames Farms, containing approximately **0.20 acres**. A certain tract of land adjudicated to the State of Louisiana in 1988 for a 1987 assessment, standing in the name of Annette W. Banks, in accordance with adjudication to the State of Louisiana and being further described as Lot 4, Square 2, Town site #3, Ames Farms, containing approximately **0.12 acres**. A certain tract of land adjudicated to the State of Louisiana in 1987 for a 1986 assessment, standing in the name of Florahaze Development Corp., in accordance with adjudication to the State of Louisiana and being further described as Lot 5, Square D, Florahaze Addition, containing approximately **0.14 acres**. A certain tract of land adjudicated to the State of Louisiana in 1983 for a 1982 assessment, standing in the name of Charles Riley, in accordance with adjudication to the State of Louisiana and being further described as Lots 58 & 59, Robinson Subdivision, containing approximately **0.14 acres**. A certain tract of land adjudicated to the State of Louisiana in 1985 for a 1984 assessment, standing in the name of Aubrey P. & Joyce R. Lockett, in accordance with adjudication to the State of Louisiana and being further described as Lots 3, 4 & 5, Robinson Avenue, containing approximately **0.21 acres**. A certain tract of land adjudicated to the State of Louisiana in 1979 for a 1978 assessment, standing in the name of Cyde V. Bourgeois, Jr., in accordance with adjudication to the State of Louisiana and being further described as Lot 8, Robinson Subdivision, containing approximately **0.07 acres**. A certain tract of land adjudicated to the State of Louisiana in 1984 for a 1983 assessment, standing in the name of John Rogers, in accordance with adjudication to the State of Louisiana and being further described as Lots 21 & 22, Walter Cohen Subdivision, containing approximately **0.12 acres**. A certain tract of land adjudicated to the State of Louisiana in 1986 for a 1985 assessment, standing in the name of Norman D. Lenreaux, in accordance with adjudication to the State of Louisiana and being further described as Lot 5, Block 7, Addition A, Town site #3, Ames Farms, containing approximately **0.11 acres**. A certain tract of land adjudicated to the State of Louisiana in 1985 for a 1984 assessment, standing in the name of Laura H. Williams, in accordance with adjudication to the State of Louisiana and being further described as Lot 11, Robinson Subdivision, containing approximately **0.07 acres**. A certain tract of land adjudicated to the State of Louisiana in 1988 for a 1987 assessment, standing in the name of William Fertdier, in accordance with adjudication to the State of Louisiana and being further described as Lot 12, Robinson Subdivision, containing approximately **0.07 acres**. A certain tract of land adjudicated to the State of Louisiana in 1988 for a 1987 assessment, standing in the name of Albert Rogers, in accordance with adjudication to the State of Louisiana and being further described as Lot 197, Robinson Subdivision, containing approximately **0.08 acres**. A certain tract of land adjudicated to the State of Louisiana in 1971 for a 1970 assessment, standing in the

name of Mayronne et al, in accordance with adjudication to the State of Louisiana and being further described as Lot 84, Town site #4, Ames Farms, containing approximately **0.17 acres**. A certain tract of land adjudicated to the State of Louisiana in 1939 for a 1938 assessment, standing in the name of Gabe Williams, in accordance with adjudication to the State of Louisiana and being further described as Lot 6, Robertson Subdivision, containing approximately **0.15 acres**. A certain tract of land adjudicated to the State of Louisiana in 1958 for a 1957 assessment, standing in the name of Floyd J. Butler, in accordance with adjudication to the State of Louisiana and being further described as Lot 48, Robertson Subdivision, containing approximately **0.15 acres**. A certain tract of land adjudicated to the State of Louisiana in 1931 for a 1930 assessment, standing in the name of Minty Robinson, in accordance with adjudication to the State of Louisiana and being further described as Lot 7, Robertson Subdivision, containing approximately **0.15 acres**. A certain tract of land adjudicated to the State of Louisiana in 1980 for a 1979 assessment, standing in the name of Florahaze Dev. Corp., in accordance with adjudication to the State of Louisiana and being further described as Block 38, Saddler Subdivision, containing approximately **0.86 acres**. Containing an aggregate **3.85 acres**, all as more particularly outlined on a plat on file in the Office of Mineral Resources, Department of Natural Resources. All bearings, distances and coordinates are based on Louisiana Coordinate System of 1927, (North or South Zone), where applicable.

NOTE: "No portion bid will be accepted on this tract."

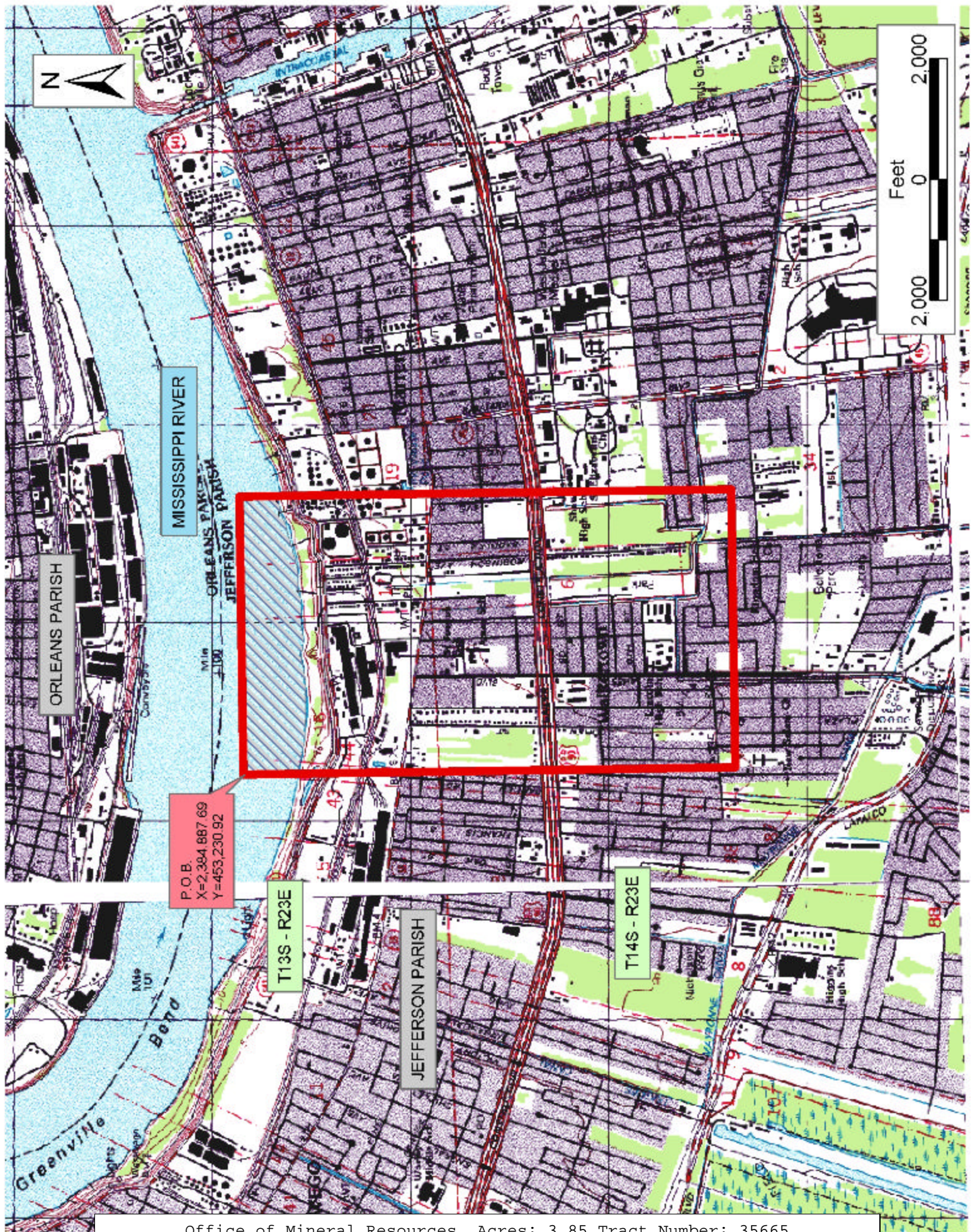
NOTE: The above description of the Tract nominated for lease has been provided and corrected, where required, exclusively by the nomination party. Any mineral lease selected from this Tract and awarded by the Louisiana State Mineral Board shall be without warranty of any kind, either express, implied, or statutory, including, but not limited to, the implied warranties of merchantability and fitness for a particular purpose. Should the mineral lease awarded by the Louisiana State Mineral Board be subsequently modified, cancelled or abrogated due to the existence of conflicting leases, operating agreements, private claims or other future obligations or conditions which may affect all or any portion of the leased Tract, it shall not relieve the Lessee of the obligation to pay any bonus due thereon to the Louisiana State Mineral Board, nor shall the Louisiana State Mineral Board be obligated to refund any consideration paid by the Lessor prior to such modification, cancellation, or abrogation, including, but not limited to, bonuses, rentals and royalties.

NOTE: The State of Louisiana does hereby reserve, and this lease shall be subject to, the imprescriptible right of surface use in the nature of a servitude in favor of the Department of Natural Resources, including its Offices and Commissions, for the sole purpose of implementing, constructing, servicing and maintaining approved coastal zone management and/or restoration projects. Utilization of any and all rights derived under this lease by the mineral lessee, its agents, successors or assigns,

shall not interfere with nor hinder the reasonable surface use by the Department of Natural Resources, its Offices or Commissions, as herein above reserved.

Applicant: Chris Roy

Bidder	Cash Payment	Price/ Acre	Rental	Oil	Gas	Other



TRACT 35666 - Jefferson Parish, Louisiana

All of the mineral rights only under land adjudicated to and acquired by the State of Louisiana in and through a proper tax sale, and subsequently alienated by the State which retained the mineral rights thereto, and which is not under valid mineral lease from the State of Louisiana on September 10, 2003, situated in Jefferson Parish, Louisiana, and being more fully described as follows: Beginning at a point having Coordinates of X = 2,384,887.69, Y = 453,230.92; thence East 4,600.37 feet to a point having Coordinates of X = 2,389,488.06, Y = 453,230.92; thence South 8,131.62 feet to a point having Coordinates of X = 2,389,488.06, Y = 445,099.30; thence West 4,600.37 feet to a point having Coordinates of X = 2,384,887.69, Y = 445,099.30; thence North 8,131.62 feet to the point of beginning. More specifically containing the following Tax Adjudicated properties: A certain tract of land adjudicated to the State of Louisiana in 1931 for a 1930 assessment, standing in the name of Lilly of the Valley No. 5, in accordance with adjudication to the State of Louisiana and being further described as Lots 17 & 18, Square 1, Town site #3, Ames Farms, containing approximately **0.10 acres**, and being those same tracts of land referred to in the State of Louisiana Patent No. 13098. A certain tract of land adjudicated to the State of Louisiana in 1931 for a 1930 assessment, standing in the name of Gus Johnson, in accordance with adjudication to the State of Louisiana and being further described as Lot 25, Square 3, Town site #3, Ames Farms containing approximately **0.10 acres**, and being that same tract of land referred to in the State of Louisiana Patent No. 18252. A certain tract of land adjudicated to the State of Louisiana in 1932 for a 1931 assessment, standing in the name of Samuel Dupre, in accordance with adjudication to the State of Louisiana and being further described as Lot 13, Town site #4, Ames Farms, containing approximately **0.13 acres**, and being that same tract of land referred to in the State of Louisiana Patent No. 13501. A certain tract of land adjudicated to the State of Louisiana in 1932 for a 1931 assessment, standing in the name of Tobe Reddish, in accordance with adjudication to the State of Louisiana and being further described as Lot 16, Square 3, Town site #3, Ames Farms, containing approximately **0.10 acres**, and being that same tract of land referred to in the State of Louisiana Patent No. 13441. A certain tract of land adjudicated to the State of Louisiana in 1932 for a 1931 assessment, standing in the name of Anzo Steibe, in accordance with adjudication to the State of Louisiana and being further described as Lot 58, Town site #4, Ames Farms, containing approximately **0.15 acres**, and being that same tract of land referred to in the State of Louisiana Patent No. 13502. A certain tract of land adjudicated to the State of Louisiana in 1935 for a 1934 assessment, standing in the name of William Turner, in accordance with adjudication to the State of Louisiana and being further described as Lots 25 & 26, Square 4, Town site #3, Ames Farms, containing approximately **0.28 acres**, and being those same tracts of land referred to in the State of Louisiana Patent No. 13635. A certain tract of land adjudicated to the State of Louisiana in 1933 for a 1932 assessment, standing in the name of Mrs. Marie Fortassin, in accordance with adjudication to the State of Louisiana and being further described as Lots 48 & 50, Town site #2, Ames

Farms, containing approximately **0.22 acres**, and being those same tracts of land referred to in the State of Louisiana Patent No. 15172. A certain tract of land adjudicated to the State of Louisiana in 1945 for a 1944 assessment, standing in the name of Miss. Pearl Langridge, in accordance with adjudication to the State of Louisiana and being further described as Lots 41 & 42, Square 3, Town site #3, Ames Farms, containing approximately **0.20 acres**, and being those same tracts of land referred to in the State of Louisiana Patent No. 18252. A certain tract of land adjudicated to the State of Louisiana in 1934 for a 1933 assessment, standing in the name of John Robinson, in accordance with adjudication to the State of Louisiana and being further described as Lot 35, Town site #4, Ames Farms, containing approximately **0.14 acres**, and being that same tract of land referred to in the State of Louisiana Patent No. 18252. A certain tract of land adjudicated to the State of Louisiana in 1934 for a 1933 assessment, standing in the name of Raftale Raguso and Jos Palestra, in accordance with adjudication to the State of Louisiana and being further described as Lots 85 and 89, Town site #4, Ames Farms, containing approximately **0.34 acres**, and being those same tracts of land referred to in the State of Louisiana Patent No. 17228. A certain tract of land adjudicated to the State of Louisiana in 1933 for a 1932 assessment, standing in the name of Charles Govann, in accordance with adjudication to the State of Louisiana and being further described as Lots 13 & 14, Walter Cohen Subdivision, containing approximately **0.12 acres**, and being those same tracts of land referred to in the State of Louisiana Patent No. 13044. A certain tract of land adjudicated to the State of Louisiana in 1930 for a 1929 assessment, standing in the name of John E. Luke, in accordance with adjudication to the State of Louisiana and being further described as Lots 57 & 58, Walter Cohen Subdivision, containing approximately **0.14 acres**, and being those same tracts of land referred to in the State of Louisiana Patent No. 18252. A certain tract of land adjudicated to the State of Louisiana in 1930 for a 1929 assessment, standing in the name of James Watkins, in accordance with adjudication to the State of Louisiana and being further described as Lots 23 & 24, Square 4, Town site #3, Ames Farms, containing approximately **0.20 acres**, and being those same tracts of land referred to in the State of Louisiana Patent No. 13825. A certain tract of land adjudicated to the State of Louisiana in 1930 for a 1929 assessment, standing in the name of C. A. Buchler, in accordance with adjudication to the State of Louisiana and being further described as Lot 45, Square 4, Ames Farms Subdivision, containing approximately **0.10 acres**, and being that same tract of land referred to in the State of Louisiana Patent No. 13936. A certain tract of land adjudicated to the State of Louisiana in 1933 for a 1932 assessment, standing in the name of George Clark, in accordance with adjudication to the State of Louisiana and being further described as Lot 27, Square 3, Ames Farms Subdivision, containing approximately **0.10 acres**, and being that same tract of land referred to in the State of Louisiana Patent No. 14941. A certain tract of land adjudicated to the State of Louisiana in 1934 for a 1933 assessment, standing in the name of Josephine, Mary & William Knowles, in accordance with adjudication to the State of Louisiana and being further described as

Lots 35 & 37, Townsite #2, Ames Farms Subdivision, containing approximately **0.22 acres**, and being those same tracts of land referred to in the State of Louisiana Patent No. 15210. A certain tract of land adjudicated to the State of Louisiana in 1928 for a 1927 assessment, standing in the name of Clara W. Smith, in accordance with adjudication to the State of Louisiana and being further described as Lot 57, Townsite #3, Ames Farms Subdivision, containing approximately **0.10 acres**, and being that same tract of land referred to in the State of Louisiana Patent No. 16973. A certain tract of land adjudicated to the State of Louisiana in 1932 for a 1931 assessment, standing in the name of Robert Verret, in accordance with adjudication to the State of Louisiana and being further described as Lot 18, Square 2, Meyers Subdivision, containing approximately **0.10 acres**, and being that same tract of land referred to in the State of Louisiana Patent No. 13386. A certain tract of land adjudicated to the State of Louisiana in 1940 for a 1939 assessment, standing in the name of Gus M Flivert, in accordance with adjudication to the State of Louisiana and being further described as Lots 36 & 37, Square 4, Townsite #3, Ames Farms, containing approximately **0.20 acres**, and being that same tract of land referred to in the State of Louisiana Patent No. 17488. Containing an aggregate **3.04 acres**, all as more particularly outlined on a plat on file in the Office of Mineral Resources, Department of Natural Resources. All bearings, distances and coordinates are based on Louisiana Coordinate System of 1927, (North or South Zone), where applicable.

NOTE: "No portion bid will be accepted on this tract."

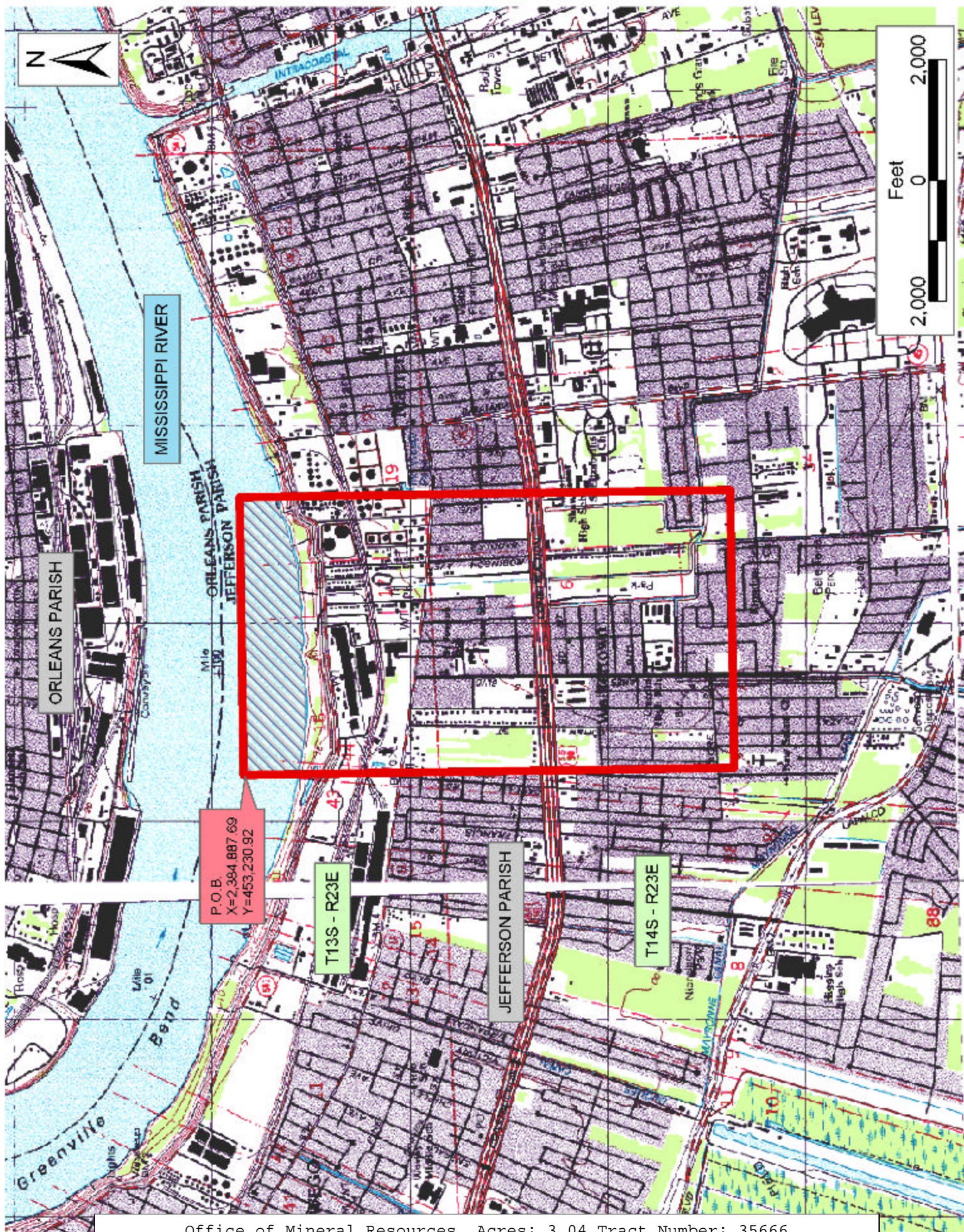
NOTE: The above description of the Tract nominated for lease has been provided and corrected, where required, exclusively by the nomination party. Any mineral lease selected from this Tract and awarded by the Louisiana State Mineral Board shall be without warranty of any kind, either express, implied, or statutory, including, but not limited to, the implied warranties of merchantability and fitness for a particular purpose. Should the mineral lease awarded by the Louisiana State Mineral Board be subsequently modified, cancelled or abrogated due to the existence of conflicting leases, operating agreements, private claims or other future obligations or conditions which may affect all or any portion of the leased Tract, it shall not relieve the Lessee of the obligation to pay any bonus due thereon to the Louisiana State Mineral Board, nor shall the Louisiana State Mineral Board be obligated to refund any consideration paid by the Lessor prior to such modification, cancellation, or abrogation, including, but not limited to, bonuses, rentals and royalties.

NOTE: The State of Louisiana does hereby reserve, and this lease shall be subject to, the imprescriptible right of surface use in the nature of a servitude in favor of the Department of Natural Resources, including its Offices and Commissions, for the sole purpose of implementing, constructing, servicing and maintaining approved coastal zone management and/or restoration projects. Utilization of any and all rights derived

under this lease by the mineral lessee, its agents, successors or assigns, shall not interfere with nor hinder the reasonable surface use by the Department of Natural Resources, its Offices or Commissions, as herein above reserved.

Applicant: Chris Roy

Bidder	Cash Payment	Price/ Acre	Rental	Oil	Gas	Other



TRACT 35667 - Jefferson Parish, Louisiana

All of the land adjudicated to and acquired by the State of Louisiana in and through a proper tax sale, including surface and mineral rights, owned by and not already under valid mineral lease from the State of Louisiana on September 10, 2003, situated in Jefferson Parish, Louisiana, and being more fully described as follows: Beginning at a point having Coordinates of X = 2,384,887.69, Y = 445,099.30; thence East 7,148.61 feet to a point having Coordinates of X = 2,392,036.30, Y = 445,099.30; thence South 7,606.86 feet to a point having Coordinates of X = 2,392,036.30, Y = 437,492.44; thence West 7,148.61 feet to a point having Coordinates of X = 2,384,887.69, Y = 437,492.44; thence North 7,606.86 feet to the point of beginning. More specifically containing the following Tax Adjudicated properties: A certain tract of land adjudicated to the State of Louisiana in 1987 for a 1986 assessment, standing in the name of Mona Simmons and Ronald A. Monroe, in accordance with adjudication to the State of Louisiana and being further described as Lot 99, Garden Plaza, containing approximately **0.14 acres**. A certain tract of land adjudicated to the State of Louisiana in 1984 for a 1983 assessment, standing in the name of Johnny Frazier Sr. and Cynthia Frazier, in accordance with adjudication to the State of Louisiana and being further described as Lot 12, Ames Farms, Terreance. Ext, containing approximately **0.12 acres**. A certain tract of land adjudicated to the State of Louisiana in 1988 for a 1987 assessment, standing in the name of Charles Jackson, Jr., in accordance with adjudication to the State of Louisiana and being further described as Lot 58, Farm C-8, Ames Farms, Terreance Ext, containing approximately **0.12 acres**. A certain tract of land adjudicated to the State of Louisiana in 1984 for a 1983 assessment, standing in the name of Anthony P. Abraham and John W. Bradley, in accordance with adjudication to the State of Louisiana and being further described as Lot 67, Ames Farms, Terreance Ext, containing approximately **0.58 acres**. A certain tract of land adjudicated to the State of Louisiana in 1984 for a 1983 assessment, standing in the name of Oak Knoll, in accordance with adjudication to the State of Louisiana and being further described as Lot 300, Oak Knoll, containing approximately **0.06 acres**. A certain tract of land adjudicated to the State of Louisiana in 1975 for a 1974 assessment, standing in the name of John R. LaCour, in accordance with adjudication to the State of Louisiana and being further described as Lot 7, Square D, Section 1, Orleans Village, Ames Farms, containing approximately **0.13 acres**. A certain tract of land adjudicated to the State of Louisiana in 1976 for a 1975 assessment, standing in the name of Secretary of Housing and Urban Dev., in accordance with adjudication to the State of Louisiana and being further described as Lot 21, Square F, Section 4, Orleans Village, Ames Farms, containing approximately **0.12 acres**. A certain tract of land adjudicated to the State of Louisiana in 1985 for a 1984 assessment, standing in the name of George C. Serigny Jr., in accordance with adjudication to the State of Louisiana and being further described as Lot 5, Square 1, Richard Subdivision, containing approximately **0.12 acres**. A certain tract of land adjudicated to the State of Louisiana in 1974 for a 1973 assessment, standing in the name of Tilmon J. LeBlanc, in accordance with adjudication to the State of

Louisiana and being further described as Lot 13, Square G, Bayou Estates, containing approximately **0.17 acres**. A certain tract of land adjudicated to the State of Louisiana in 1985 for a 1984 assessment, standing in the name of Joseph R. Falgoust, in accordance with adjudication to the State of Louisiana and being further described as Lot 14, Square F, Bayou Estates, containing approximately **0.16 acres**. A certain tract of land adjudicated to the State of Louisiana in 1985 for a 1984 assessment, standing in the name of Joseph Ochello, in accordance with adjudication to the State of Louisiana and being further described as Lot 6, Block B, Bell Terrace, containing approximately **0.48 acres**. A certain tract of land adjudicated to the State of Louisiana in 1928 for a 1927 assessment, standing in the name of Joseph B. C. Boudreaux, in accordance with adjudication to the State of Louisiana and being further described as Lot 3, Bell Terre of Ames Farms, containing approximately **0.22 acres**. A certain tract of land adjudicated to the State of Louisiana in 1986 for a 1985 assessment, standing in the name of James L. Price, in accordance with adjudication to the State of Louisiana and being further described as Lot 55, Square 4, Haydel Mannor, containing approximately **0.14 acres**. A certain tract of land adjudicated to the State of Louisiana in 1985 for a 1984 assessment, standing in the name of Charles and Wanda Smith, in accordance with adjudication to the State of Louisiana and being further described as Lot FF, Square 4, Greenbriar, containing approximately **0.14 acres**. A certain tract of land adjudicated to the State of Louisiana in 1980 for a 1979 assessment, standing in the name of Orleans Village Corp., in accordance with adjudication to the State of Louisiana and being further described as Lot 2, Square D, Orleans Village, Ames Farms, containing approximately **0.11 acres**. A certain tract of land adjudicated to the State of Louisiana in 1984 for a 1983 assessment, standing in the name of Oak Knoll, in accordance with adjudication to the State of Louisiana and being further described as Lot 65, Oak Knoll, containing approximately **0.13 acres**. A certain tract of land adjudicated to the State of Louisiana in 1984 for a 1983 assessment, standing in the name of Oak Knoll, in accordance with adjudication to the State of Louisiana and being further described as Lot 134, Oak Knoll, containing approximately **0.13 acres**. A certain tract of land adjudicated to the State of Louisiana in 1984 for a 1983 assessment, standing in the name of Oak Knoll, in accordance with adjudication to the State of Louisiana and being further described as Lot 217, Oak Knoll, containing approximately **0.13 acres**. A certain tract of land adjudicated to the State of Louisiana in 1984 for a 1983 assessment, standing in the name of Oak Knoll, in accordance with adjudication to the State of Louisiana and being further described as Lot 223, Oak Knoll, containing approximately **0.13 acres**. Containing an aggregate **3.33 acres**, all as more particularly outlined on a plat on file in the Office of Mineral Resources, Department of Natural Resources. All bearings, distances and coordinates are based on Louisiana Coordinate System of 1927, (North or South Zone), where applicable.

NOTE: "No portion bid will be accepted on this tract."

NOTE: The above description of the Tract nominated for lease has been provided and corrected, where required, exclusively by the nomination party. Any mineral lease selected from this Tract and awarded by the Louisiana State Mineral Board shall be without warranty of any kind, either express, implied, or statutory, including, but not limited to, the implied warranties of merchantability and fitness for a particular purpose. Should the mineral lease awarded by the Louisiana State Mineral Board be subsequently modified, cancelled or abrogated due to the existence of conflicting leases, operating agreements, private claims or other future obligations or conditions which may affect all or any portion of the leased Tract, it shall not relieve the Lessee of the obligation to pay any bonus due thereon to the Louisiana State Mineral Board, nor shall the Louisiana State Mineral Board be obligated to refund any consideration paid by the Lessor prior to such modification, cancellation, or abrogation, including, but not limited to, bonuses, rentals and royalties.

NOTE: The State of Louisiana does hereby reserve, and this lease shall be subject to, the imprescriptible right of surface use in the nature of a servitude in favor of the Department of Natural Resources, including its Offices and Commissions, for the sole purpose of implementing, constructing, servicing and maintaining approved coastal zone management and/or restoration projects. Utilization of any and all rights derived under this lease by the mineral lessee, its agents, successors or assigns, shall not interfere with nor hinder the reasonable surface use by the Department of Natural Resources, its Offices or Commissions, as herein above reserved.

Applicant: Chris Roy

Bidder	Cash Payment	Price/ Acre	Rental	Oil	Gas	Other

