

TRACT 35655 - Jefferson Parish, Louisiana

All of the land adjudicated to and acquired by the State of Louisiana in and through a proper tax sale, including surface and mineral rights, owned by and not already under valid mineral lease from the State of Louisiana on September 10, 2003, situated in Jefferson Parish, Louisiana, and being more fully described as follows: Beginning at a point having Coordinates of X = 2,370,623.21 and Y = 467,567.81; thence East 4,462.16 feet to a point having Coordinates of X = 2,375,085.37 and Y = 467,567.81; thence South 7,639.32 feet to a point having Coordinates of X = 2,375,085.37 and Y = 459,928.49; thence West 4,462.16 feet to a point having Coordinates of X = 2,370,623.21 and Y = 459,928.49; thence North 7,639.32 feet to the point of beginning. More specifically containing the following Tax Adjudicated properties: A certain tract of land adjudicated to the State of Louisiana in 1985 for a 1984 assessment, standing in the name of Joseph Calegan, in accordance with adjudication to the State of Louisiana and being further described as Lot 9A, Square 2, Normandy Park, containing approximately **0.18 acres**. A certain tract of land adjudicated to the State of Louisiana in 1988 for a 1987 assessment, standing in the name of Earl and Ella F. Delatte, in accordance with adjudication to the State of Louisiana and being further described as Lot 4, Square 1, Normandy Park, containing approximately **0.13 acres**. A certain tract of land adjudicated to the State of Louisiana in 1988 for a 1987 assessment, standing in the name of Gene Firmin, in accordance with adjudication to the State of Louisiana and being further described as Lot 2, Square E, Section B, Normandy Park, containing approximately **0.15 acres**. A certain tract of land adjudicated to the State of Louisiana in 1988 for a 1987 assessment, standing in the name of Leslie A. Lynn et al, in accordance with adjudication to the State of Louisiana and being further described as Lot 3, Square A, Normandy Park, containing approximately **0.15 acres**. A certain tract of land adjudicated to the State of Louisiana in 1988 for a 1987 assessment, standing in the name of Normandy Company, Inc., in accordance with adjudication to the State of Louisiana and being further described as Lot 2 thru 21 and Lot 27, Square H, Normandy Park, containing approximately **2.99 acres**. A certain tract of land adjudicated to the State of Louisiana in 1988 for a 1987 assessment, standing in the name of Norriv, Inc., in accordance with adjudication to the State of Louisiana and being further described as Lot 10, Square 1, Normandy Park, containing approximately **0.13 acres**. A certain tract of land adjudicated to the State of Louisiana in 1984 for a 1983 assessment, standing in the name of Jacob Gassenberger, in accordance with adjudication to the State of Louisiana and being further described as Unnumbered lot Between Lot 28, Square #1 and first Lot of Square #3, Pecan Grove, containing approximately **0.47 acres**. Containing an aggregate **4.20 acres**, all as more particularly outlined on a plat on file in the Office of Mineral Resources, Department of Natural Resources. All bearings, distances and coordinates are based on Louisiana Coordinate System of 1927, (North or South Zone), where applicable.

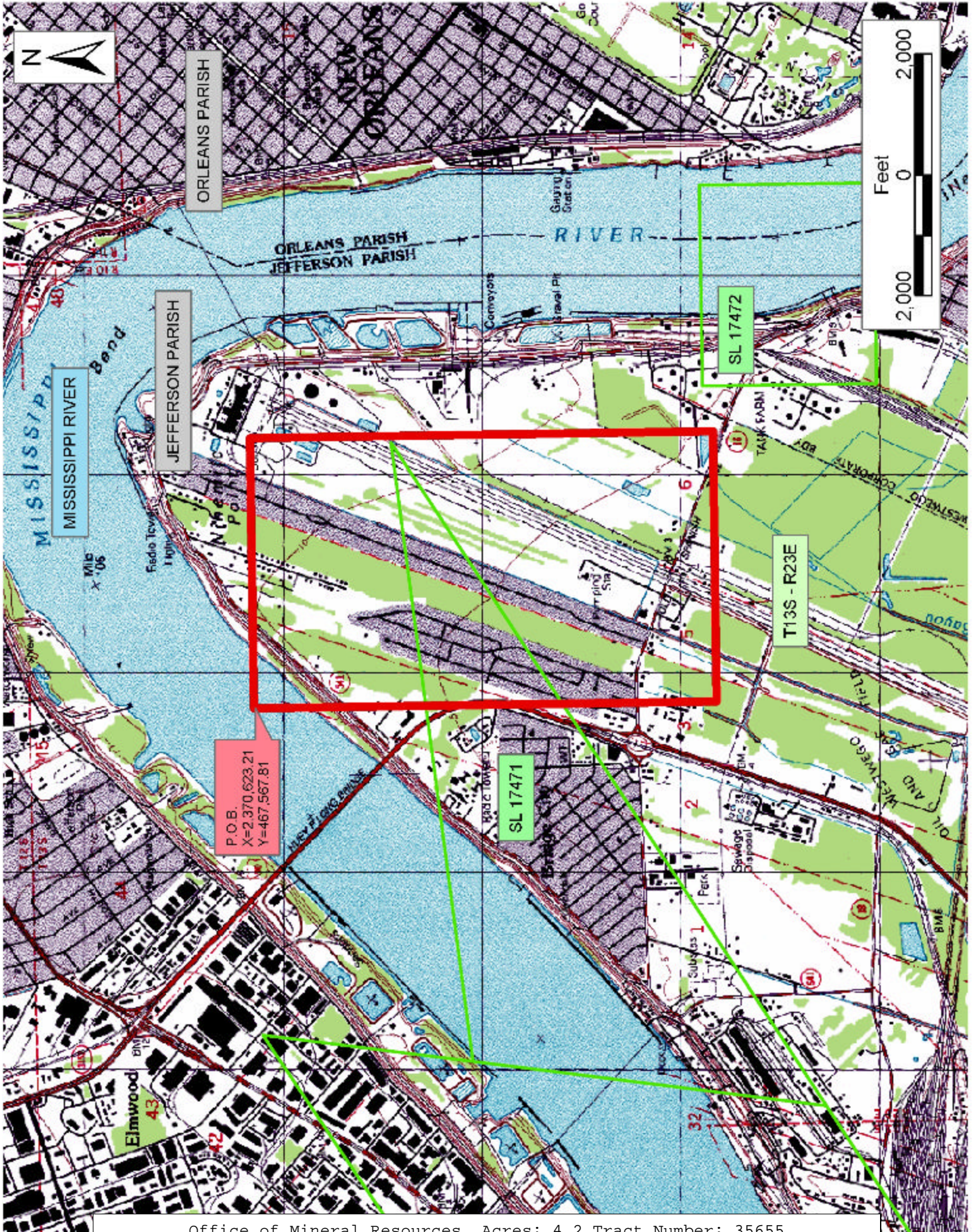
NOTE: "No portion bid will be accepted on this tract."

NOTE: The above description of the Tract nominated for lease has been provided and corrected, where required, exclusively by the nomination party. Any mineral lease selected from this Tract and awarded by the Louisiana State Mineral Board shall be without warranty of any kind, either express, implied, or statutory, including, but not limited to, the implied warranties of merchantability and fitness for a particular purpose. Should the mineral lease awarded by the Louisiana State Mineral Board be subsequently modified, cancelled or abrogated due to the existence of conflicting leases, operating agreements, private claims or other future obligations or conditions which may affect all or any portion of the leased Tract, it shall not relieve the Lessee of the obligation to pay any bonus due thereon to the Louisiana State Mineral Board, nor shall the Louisiana State Mineral Board be obligated to refund any consideration paid by the Lessor prior to such modification, cancellation, or abrogation, including, but not limited to, bonuses, rentals and royalties.

NOTE: The State of Louisiana does hereby reserve, and this lease shall be subject to, the imprescriptible right of surface use in the nature of a servitude in favor of the Department of Natural Resources, including its Offices and Commissions, for the sole purpose of implementing, constructing, servicing and maintaining approved coastal zone management and/or restoration projects. Utilization of any and all rights derived under this lease by the mineral lessee, its agents, successors or assigns, shall not interfere with nor hinder the reasonable surface use by the Department of Natural Resources, its Offices or Commissions, as herein above reserved.

Applicant: Chris Roy

Bidder	Cash Payment	Price/Acre	Rental	Oil	Gas	Other



TRACT 35656 - Jefferson Parish, Louisiana

All of the land adjudicated to and acquired by the State of Louisiana in and through a proper tax sale, including surface and mineral rights, owned by and not already under valid mineral lease from the State of Louisiana on September 10, 2003, situated in Jefferson Parish, Louisiana, and being more fully described as follows: Beginning at a point having Coordinates of X = 2,362,598.55, Y = 465,619.43; thence East 8,024.66 feet to a point having Coordinates of X = 2,370,623.21, Y = 465,619.43; thence South 5,690.94 feet to a point having Coordinates of X = 2,370,623.21, Y = 459,928.49; thence West 8,024.66 feet to a point having Coordinates of X = 2,362,598.55, Y = 459,928.49; thence North 5,690.94 feet to the point of beginning. More specifically containing the following Tax Adjudicated properties: A certain tract of land adjudicated to the State of Louisiana in 1959 for a 1958 assessment, standing in the name of Isaih Collins and Mrs. Clora Cola, in accordance with adjudication to the State of Louisiana and being further described as Lot 20, Square 1, Belt Bridge, containing approximately **0.06 acres**. A certain tract of land adjudicated to the State of Louisiana in 1968 for a 1967 assessment, standing in the name of Gaston Bordelon, in accordance with adjudication to the State of Louisiana and being further described as Lot 61, Square 4, Belt Bridge, containing approximately **0.06 acres**. A certain tract of land adjudicated to the State of Louisiana in 1978 for a 1977 assessment, standing in the name of Mrs. Gertrude B. Brady, in accordance with adjudication to the State of Louisiana and being further described as Lots 8, 9, 10, and 11 Square 3, Belt Bridge, containing approximately **0.24 acres**. A certain tract of land adjudicated to the State of Louisiana in 1982 for a 1981 assessment, standing in the name of Ted and Mary Weems, in accordance with adjudication to the State of Louisiana and being further described as Lots 39 and 40, Square 16, Belt Bridge, containing approximately **0.12 acres**. A certain tract of land adjudicated to the State of Louisiana in 1985 for a 1984 assessment, standing in the name of Joseph and Alberta W. Best, in accordance with adjudication to the State of Louisiana and being further described as Lots 35 and 36, Square 3, Belt Bridge, containing approximately **0.12 acres**. A certain tract of land adjudicated to the State of Louisiana in 1985 for a 1984 assessment, standing in the name of Walter L. Evans, in accordance with adjudication to the State of Louisiana and being further described as Lot 30, Square 5, Belt Bridge, containing approximately **0.06 acres**. A certain tract of land adjudicated to the State of Louisiana in 1985 for a 1984 assessment, standing in the name of Alberta Simmons, in accordance with adjudication to the State of Louisiana and being further described as Lots 37 and 38, Square 3, Belt Bridge, containing approximately **0.12 acres**. A certain tract of land adjudicated to the State of Louisiana in 1986 for a 1985 assessment, standing in the name of Georgina Thomas Brim, in accordance with adjudication to the State of Louisiana and being further described as Lot 61, Square 4, Belt Bridge, containing approximately **0.06 acres**. A certain tract of land adjudicated to the State of Louisiana in 1986 for a 1985 assessment, standing in the name of Leonard Johnson, in accordance with adjudication to the State of Louisiana and being further described as Lots 24, 25 and 26, Square S-26,

Belt Bridge, containing approximately **0.18 acres**. A certain tract of land adjudicated to the State of Louisiana in 1987 for a 1986 assessment, standing in the name of Sidney Jones, in accordance with adjudication to the State of Louisiana and being further described as Lot 72, Square 4, Belt Bridge, containing approximately **0.06 acres**. A certain tract of land adjudicated to the State of Louisiana in 1988 for a 1987 assessment standing in the name of Loretta Banks, in accordance with adjudication to the State of Louisiana and being further described as Lot 21, Square 1, Belt Bridge, containing approximately **0.18 acres**. A certain tract of land adjudicated to the State of Louisiana in 1988 for a 1987 assessment standing in the name of Herman Johnson, in accordance with adjudication to the State of Louisiana and being further described as Lot 1, Square 22, Belt Bridge, containing approximately **0.06 acres**. A certain tract of land adjudicated to the State of Louisiana in 1988 for a 1987 assessment standing in the name of Roland P. Knoblock, in accordance with adjudication to the State of Louisiana and being further described as Lots 38 and 39, Square 22, Belt Bridge, containing approximately **0.11 acres**. A certain tract of land adjudicated to the State of Louisiana in 1988 for a 1987 assessment standing in the name of Gus Wallace Sr., in accordance with adjudication to the State of Louisiana and being further described as Lots 7 and 8, Square 27, Belt Bridge, containing approximately **0.18 acres**. A certain tract of land adjudicated to the State of Louisiana in 1988 for a 1987 assessment standing in the name of Jerry Wallace, in accordance with adjudication to the State of Louisiana and being further described as Lots 18 and 19, Square S-26, Belt Bridge, containing approximately **0.12 acres**. A certain tract of land adjudicated to the State of Louisiana in 1988 for a 1987 assessment standing in the name of Ellis Washington et al, in accordance with adjudication to the State of Louisiana and being further described as Lots 11, 12, 24 and 25, Square S-25, Belt Bridge, containing approximately **0.24 acres**. A certain tract of land adjudicated to the State of Louisiana in 1988 for a 1987 assessment standing in the name of Wilfred Jones, in accordance with adjudication to the State of Louisiana and being further described as Lots 55 and 56, Square 3, Belt City, containing approximately **0.12 acres**. A certain tract of land adjudicated to the State of Louisiana in 1981 for a 1980 assessment, standing in the name of Byrthade Russell, in accordance with adjudication to the State of Louisiana and being further described as Lots 4A, 5, 18A and 19, Square S-29, Belt Bridge, containing approximately **0.24 acres**. A certain tract of land adjudicated to the State of Louisiana in 1984 for a 1983 assessment, standing in the name of Jacob Gassenberger, Sr., in accordance with adjudication to the State of Louisiana and being further described as Lot F-7, Belt Bridge, containing approximately **0.22 acres**. Containing an aggregate **2.55 acres**, all as more particularly outlined on a plat on file in the Office of Mineral Resources, Department of Natural Resources. All bearings, distances and coordinates are based on Louisiana Coordinate System of 1927, (North or South Zone), where applicable.

NOTE: "No portion bid will be accepted on this tract."

NOTE: The above description of the Tract nominated for lease has been provided and corrected, where required, exclusively by the nomination party. Any mineral lease selected from this Tract and awarded by the Louisiana State Mineral Board shall be without warranty of any kind, either express, implied, or statutory, including, but not limited to, the implied warranties of merchantability and fitness for a particular purpose. Should the mineral lease awarded by the Louisiana State Mineral Board be subsequently modified, cancelled or abrogated due to the existence of conflicting leases, operating agreements, private claims or other future obligations or conditions which may affect all or any portion of the leased Tract, it shall not relieve the Lessee of the obligation to pay any bonus due thereon to the Louisiana State Mineral Board, nor shall the Louisiana State Mineral Board be obligated to refund any consideration paid by the Lessor prior to such modification, cancellation, or abrogation, including, but not limited to, bonuses, rentals and royalties.

NOTE: The State of Louisiana does hereby reserve, and this lease shall be subject to, the imprescriptible right of surface use in the nature of a servitude in favor of the Department of Natural Resources, including its Offices and Commissions, for the sole purpose of implementing, constructing, servicing and maintaining approved coastal zone management and/or restoration projects. Utilization of any and all rights derived under this lease by the mineral lessee, its agents, successors or assigns, shall not interfere with nor hinder the reasonable surface use by the Department of Natural Resources, its Offices or Commissions, as herein above reserved.

Applicant: Chris Roy

Bidder	Cash Payment	Price/Acre	Rental	Oil	Gas	Other

TRACT 35657 - Jefferson Parish, Louisiana

All of the mineral rights only under land adjudicated to and acquired by the State of Louisiana in and through a proper tax sale, and subsequently alienated by the State which retained the mineral rights thereto, and which is not under valid mineral lease from the State of Louisiana on September 10, 2003, situated in Jefferson Parish, Louisiana, and being more fully described as follows: Beginning at a point having Coordinates of X = 2,362,598.55, Y = 465,619.43; thence East 8,024.66 feet to a point having Coordinates of X = 2,370,623.21, Y = 465,619.43; thence South 5,690.94 feet to a point having Coordinates of X = 2,370,623.21, Y = 459,928.49; thence West 8,024.66 feet to a point having Coordinates of X = 2,362,598.55, Y = 459,928.49; thence North 5,690.94 feet to the point of beginning. More specifically containing the following Tax Adjudicated properties: A certain tract of land adjudicated to the State of Louisiana in 1935 for a 1934 assessment standing in the name of Gustave F. Erfler, in accordance with adjudication to the State of Louisiana and being further described as Lot 14, Square 15, Belt Bridge, containing approximately **0.06 acres**, and being that same tract of land referred to in the State of Louisiana Patent No. 18624. A certain tract of land adjudicated to the State of Louisiana in 1948 for a 1947 assessment standing in the name of Ivan Rivero, in accordance with adjudication to the State of Louisiana and being further described as Lots 21 and 22, Square 6, Belt Bridge, containing approximately **0.12 acres**, and being those same tracts of land referred to in the State of Louisiana Patent No. 17872. A certain tract of land adjudicated to the State of Louisiana in 1934 for a 1933 assessment standing in the name of Henry Brown, in accordance with adjudication to the State of Louisiana and being further described as Lots 31 and 32, Square 9, Belt Bridge, containing approximately **0.12 acres**, and being those same tracts of land referred to in the State of Louisiana Patent No. 18194. A certain tract of land adjudicated to the State of Louisiana in 1932 for a 1931 assessment, standing in the name of Joseph Williams, in accordance with adjudication to the State of Louisiana and being further described as Lot 52, Square 3, Belt City, containing approximately **0.06 acres**, and being that same tract of land referred to in the State of Louisiana Patent No. 18565. A certain tract of land adjudicated to the State of Louisiana in 1936 for a 1935 assessment standing in the name of Willie Thompson, in accordance with adjudication to the State of Louisiana and being further described as Lot 24, Square 4, Belt City, containing approximately **0.06 acres**, and being that same tract of land referred to in the State of Louisiana Patent No. 18797. A certain tract of land adjudicated to the State of Louisiana in 1933 for a 1932 assessment standing in the name of Edward McDermott, in accordance with adjudication to the State of Louisiana and being further described as Lot 3, Square 14, Belt City and Lots 33 and 34, Square 8, Belt City, containing approximately **0.18 acres**, and being that same tract of land referred to in the State of Louisiana Patent No. 17911. A certain tract of land adjudicated to the State of Louisiana in 1935 for a 1934 assessment standing in the name of Mary Johnson, in accordance with adjudication to the State of Louisiana and being further described as Lots

29 and 30, Square 9, Belt City, containing approximately **0.12 acres**, and being those same tracts of land referred to in the State of Louisiana Patent No. 18194. A certain tract of land adjudicated to the State of Louisiana in 1934 for a 1933 assessment standing in the name of Aldolph Schroder, in accordance with adjudication to the State of Louisiana and being further described as Lot 11, Square 18, Belt City, containing approximately **0.02 acres**, and being that same tract of land referred to in the State of Louisiana Patent No. 16717. A certain tract of land adjudicated to the State of Louisiana in 1937 for a 1936 assessment standing in the name of Eugene L. Scott, in accordance with adjudication to the State of Louisiana and being further described as Lots 37 and 38, Square 3, seconds Belt City, containing approximately **0.12 acres**, and being those same tracts of land referred to in the State of Louisiana Patent No. 18250. A certain tract of land adjudicated to the State of Louisiana in 1937 for a 1936 assessment, standing in the name of Eugene L. Scott, in accordance with adjudication to the State of Louisiana and being further described as Lots 37 and 38, Square 8, Belt City, containing approximately **0.12 acres**. Containing an aggregate **0.86 acres**, all as more particularly outlined on a plat on file in the Office of Mineral Resources, Department of Natural Resources. All bearings, distances and coordinates are based on Louisiana Coordinate System of 1927, (North or South Zone), where applicable.

NOTE: "No portion bid will be accepted on this tract."

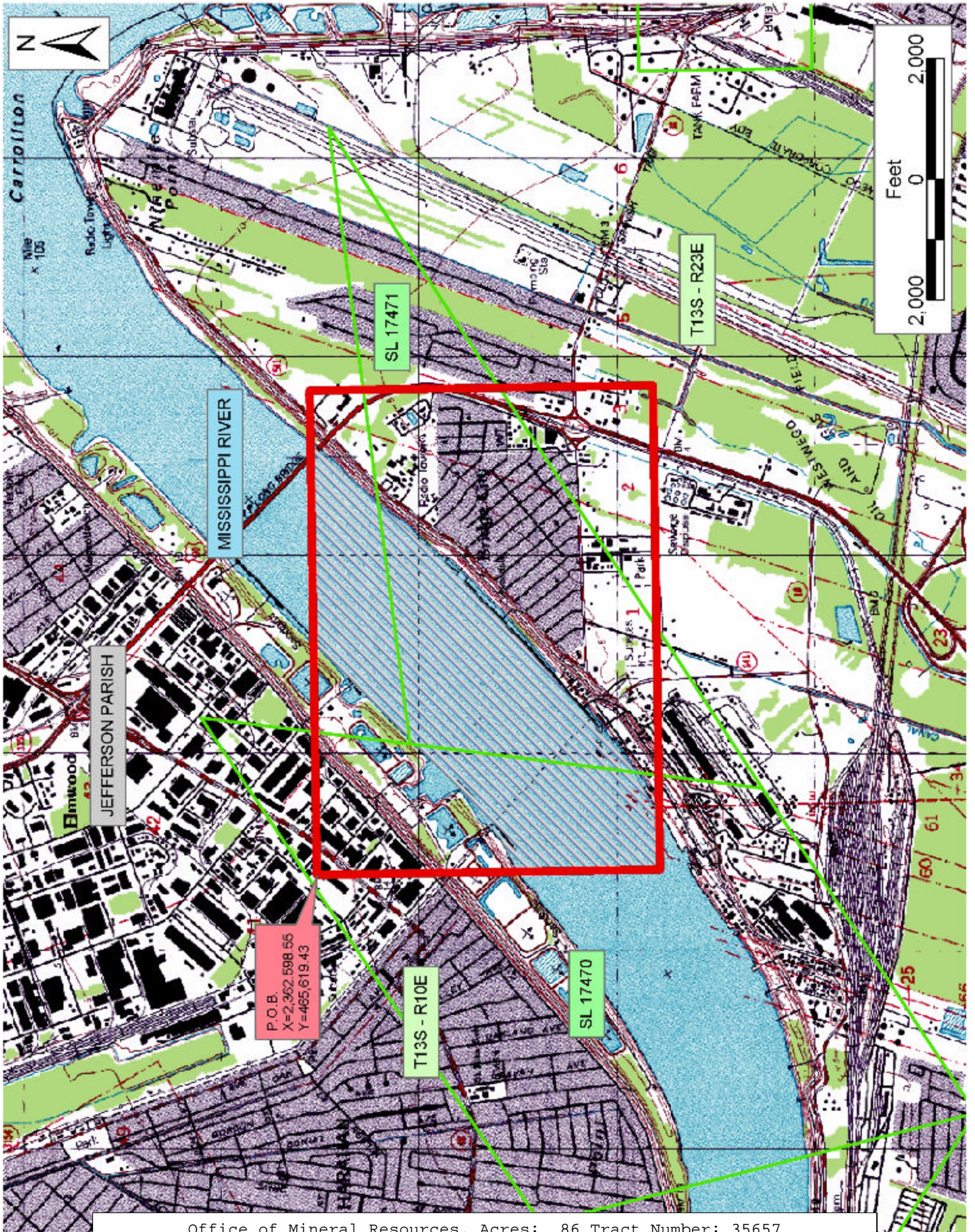
NOTE: The above description of the Tract nominated for lease has been provided and corrected, where required, exclusively by the nomination party. Any mineral lease selected from this Tract and awarded by the Louisiana State Mineral Board shall be without warranty of any kind, either express, implied, or statutory, including, but not limited to, the implied warranties of merchantability and fitness for a particular purpose. Should the mineral lease awarded by the Louisiana State Mineral Board be subsequently modified, cancelled or abrogated due to the existence of conflicting leases, operating agreements, private claims or other future obligations or conditions which may affect all or any portion of the leased Tract, it shall not relieve the Lessee of the obligation to pay any bonus due thereon to the Louisiana State Mineral Board, nor shall the Louisiana State Mineral Board be obligated to refund any consideration paid by the Lessor prior to such modification, cancellation, or abrogation, including, but not limited to, bonuses, rentals and royalties.

NOTE: The State of Louisiana does hereby reserve, and this lease shall be subject to, the imprescriptible right of surface use in the nature of a servitude in favor of the Department of Natural Resources, including its Offices and Commissions, for the sole purpose of implementing, constructing, servicing and maintaining approved coastal zone management and/or restoration projects. Utilization of any and all rights derived under this lease by the mineral lessee, its agents, successors or assigns, shall not interfere with nor hinder the reasonable surface use by the

Department of Natural Resources, its Offices or Commissions, as herein above reserved.

Applicant: Chris Roy

Bidder	Cash Payment	Price/Acre	Rental	Oil	Gas	Other



TRACT 35658 - Jefferson Parish, Louisiana

All of the land adjudicated to and acquired by the State of Louisiana in and through a proper tax sale, including surface and mineral rights, owned by and not already under valid mineral lease from the State of Louisiana on September 10, 2003, situated in Jefferson Parish, Louisiana, and being more fully described as follows: Beginning at a point having Coordinates of X = 2,349,677.61, Y = 463,895.93; thence East 12,920.94 feet to a point having Coordinates of X = 2,362,598.55, Y = 463,895.93; thence South 10,183.06 feet to a point having Coordinates of X = 2,362,598.55, Y = 453,712.87; thence West 12,920.94 feet to a point having Coordinates of X = 2,349,677.61, Y = 453,712.87; thence North 10,183.06 feet to the point of beginning. More specifically containing the following Tax Adjudicated properties: A certain tract of land adjudicated to the State of Louisiana in 1932 for a 1931 assessment, standing in the name of Mrs. G.C. Wilson, in accordance with adjudication to the State of Louisiana and being further described as Lot 39, Square 1, Avondale Gardens being 30 feet X 120 feet, containing approximately **0.09 acres**. A certain tract of land adjudicated to the State of Louisiana in 1975 for a 1974 assessment, standing in the name of Joseph E. Vincent Jr., in accordance with adjudication to the State of Louisiana and being further described as Lot 17, Square 119, Phase II Washington Place, containing approximately **0.13 acres**. A certain tract of land adjudicated to the State of Louisiana in 1982 for a 1981 assessment, standing in the name of Delores S. Adams, in accordance with adjudication to the State of Louisiana and being further described as Lot 3, Square 120 Washington Place, containing approximately **0.12 acres**. A certain tract of land adjudicated to the State of Louisiana in 1985 for a 1984 assessment, standing in the name of Leroy Butler, in accordance with adjudication to the State of Louisiana and being further described as Lot 20, Square 104, Washington Place, containing approximately **0.12 acres**. A certain tract of land adjudicated to the State of Louisiana in 1986 for a 1985 assessment, standing in the name of Dave A. Rodgers, in accordance with adjudication to the State of Louisiana and being further described as Lot 1, Square 103, Washington Place, containing approximately **0.19 acres**. A certain tract of land adjudicated to the State of Louisiana in 1987 for a 1986 assessment, standing in the name of George Allen, in accordance with adjudication to the State of Louisiana and being further described as Lot 11, Square 120, Washington Place Phase II, containing approximately **0.12 acres**. A certain tract of land adjudicated to the State of Louisiana in 1987 for a 1986 assessment, standing in the name of RAMC Investors Inc., in accordance with adjudication to the State of Louisiana and being further described as Lot 8, Square 108, Washington Place, containing approximately **0.12 acres**. A certain tract of land adjudicated to the State of Louisiana in 1985 for a 1984 assessment, standing in the name of Paul Simmons, in accordance with adjudication to the State of Louisiana and being further described as Lots 31 and 32, Square 2, Avondale Gardens, containing approximately **0.18 acres**. A certain tract of land adjudicated to the State of Louisiana in 1980 for a 1979 assessment, standing in the name of Celestine M. Harris c/o David Knight, in accordance with adjudication to the State of Louisiana and being

further described as Lots 43 and 44, Square 2, Avondale Gardens, containing approximately **0.18 acres**. A certain tract of land adjudicated to the State of Louisiana in 1983 for a 1982 assessment, standing in the name of Margaret Perry Allen, in accordance with adjudication to the State of Louisiana and being further described as Lots 31 and 22, Square 1, Avondale Gardens, containing approximately **0.18 acres**. A certain tract of land adjudicated to the State of Louisiana in 1973 for a 1972 assessment, standing in the name of Eugene Allen, in accordance with adjudication to the State of Louisiana and being further described as Lot 3-A-1, Square H, Avondale Homes containing approximately **0.12 acres**. A certain tract of land adjudicated to the State of Louisiana in 1980 for a 1979 assessment, standing in the name of Charles Royes, in accordance with adjudication to the State of Louisiana and being further described as Lot 1, Square K, Avondale Homes containing approximately **0.13 acres**. A certain tract of land adjudicated to the State of Louisiana in 1981 for a 1980 assessment, standing in the name of Emma R. Owen et al in accordance with adjudication to the State of Louisiana and being further described as Lot 7, Square 3, Foret Addition, containing approximately **0.14 acres**. A certain tract of land adjudicated to the State of Louisiana in 1979 for a 1978 assessment, standing in the name of Flavie S. Hogan in accordance with adjudication to the State of Louisiana and being further described as Lot 34, Square 2, Georgetown Subdivision containing approximately **0.17 acres**. A certain tract of land adjudicated to the State of Louisiana in 1982 for a 1981 assessment, standing in the name of Land Plans, Inc. in accordance with adjudication to the State of Louisiana and being further described as Lot 55, Square M, Glen Della, containing approximately **0.13 acres**. A certain tract of land adjudicated to the State of Louisiana in 1982 for a 1981 assessment, standing in the name of Land Plans, Inc. in accordance with adjudication to the State of Louisiana and being further described as Lot 56, Square M, Glen Della, containing approximately **0.13 acres**. A certain tract of land adjudicated to the State of Louisiana in 1985 for a 1984 assessment, standing in the name of Oliver Theriot in accordance with adjudication to the State of Louisiana and being further described as Lot 7, Square O, Glen Della containing approximately **0.13 acres**. A certain tract of land adjudicated to the State of Louisiana in 1987 for a 1986 assessment, standing in the name of Land Plans, Inc. in accordance with adjudication to the State of Louisiana and being further described as Lot 18, Square B, Glen Della containing approximately **0.13 acres**. A certain tract of land adjudicated to the State of Louisiana in 1987 for a 1986 assessment, standing in the name of Land Plans, Inc. in accordance with adjudication to the State of Louisiana and being further described as Lot 2, Square B, Glen Della, containing approximately **0.16 acres**. A certain tract of land adjudicated to the State of Louisiana in 1987 for a 1986 assessment, standing in the name of Land Plans, Inc. in accordance with adjudication to the State of Louisiana and being further described as Lot 3, Square B, Glen Della, containing approximately **0.17 acres**. A certain tract of land adjudicated to the State of Louisiana in 1987 for a 1986 assessment, standing in the name of Land Plans, Inc. in accordance with adjudication to the State of Louisiana and being further described as Lot

12, Square D, Glen Della, containing approximately **0.14 acres**. A certain tract of land adjudicated to the State of Louisiana in 1987 for a 1986 assessment, standing in the name of Leon Percy Jr. in accordance with adjudication to the State of Louisiana and being further described as Lots 1A, 1B, 1C, 1D, 1E, Square C, Glen Della, containing approximately **0.21 acres**. A certain tract of land adjudicated to the State of Louisiana in 1987 for a 1986 assessment, standing in the name of Jacqueline J. Singleton in accordance with adjudication to the State of Louisiana and being further described as Lot 18, Square K, Glen Della, containing approximately **0.13 acres**. A certain tract of land adjudicated to the State of Louisiana in 1970 for a 1969 assessment, standing in the name of Mary Sawyer et al in accordance with adjudication to the State of Louisiana and being further described as Lot 6, Square 3, J. S. Brady Subdivision, containing approximately **0.13 acres**. A certain tract of land adjudicated to the State of Louisiana in 1977 for a 1976 assessment, standing in the name of Joseph P. Kennedy in accordance with adjudication to the State of Louisiana and being further described as Lot 9, Block E, J. S. Brady Subdivision, containing approximately **0.10 acres**. A certain tract of land adjudicated to the State of Louisiana in 1988 for a 1987 assessment standing in the name of George Belt in accordance with adjudication to the State of Louisiana and being further described as Lot 12, Block 5, J. S. Brady Subdivision, containing approximately **0.17 acres**. A certain tract of land adjudicated to the State of Louisiana in 1985 for a 1984 assessment, standing in the name of Wilbert Shelby Jr. in accordance with adjudication to the State of Louisiana and being further described as Lot 10, Block H, J. S. Brady Subdivision, containing approximately **0.10 acres**. A certain tract of land adjudicated to the State of Louisiana in 1976 for a 1975 assessment, standing in the name of Gabriel Sterling in accordance with adjudication to the State of Louisiana and being further described as Lot 11A, Square U, King Estates, containing approximately **0.13 acres**. A certain tract of land adjudicated to the State of Louisiana in 1987 for a 1986 assessment, standing in the name of William M. Jackson in accordance with adjudication to the State of Louisiana and being further described as Parcel 2A, Square A, Glen Della, containing approximately **0.18 acres**. A certain tract of land adjudicated to the State of Louisiana in 1988 for a 1987 assessment, standing in the name of Norma William in accordance with adjudication to the State of Louisiana and being further described as Lot 30, Square E, Glen Della, containing approximately **0.13 acres**. A certain tract of land adjudicated to the State of Louisiana in 1987 for a 1986 assessment, standing in the name of Secretary of Housing in accordance with adjudication to the State of Louisiana and being further described as Lot 36, Square E, Glen Della, containing approximately **0.13 acres**. A certain tract of land adjudicated to the State of Louisiana in 1987 for a 1986 assessment, standing in the name of Land Plans, Inc. in accordance with adjudication to the State of Louisiana and being further described as Lot 33, Square 0, Glen Della containing approximately **0.13 acres**. A certain tract of land adjudicated to the State of Louisiana in 1987 for a 1986 assessment, standing in the name of Land Plans, Inc. in accordance with adjudication to the State of Louisiana and being further described as

Containing an aggregate **12.58 acres**, all as more particularly outlined on a plat on file in the Office of Mineral Resources, Department of Natural Resources. All bearings, distances and coordinates are based on Louisiana Coordinate System of 1927, (North or South Zone), where applicable.

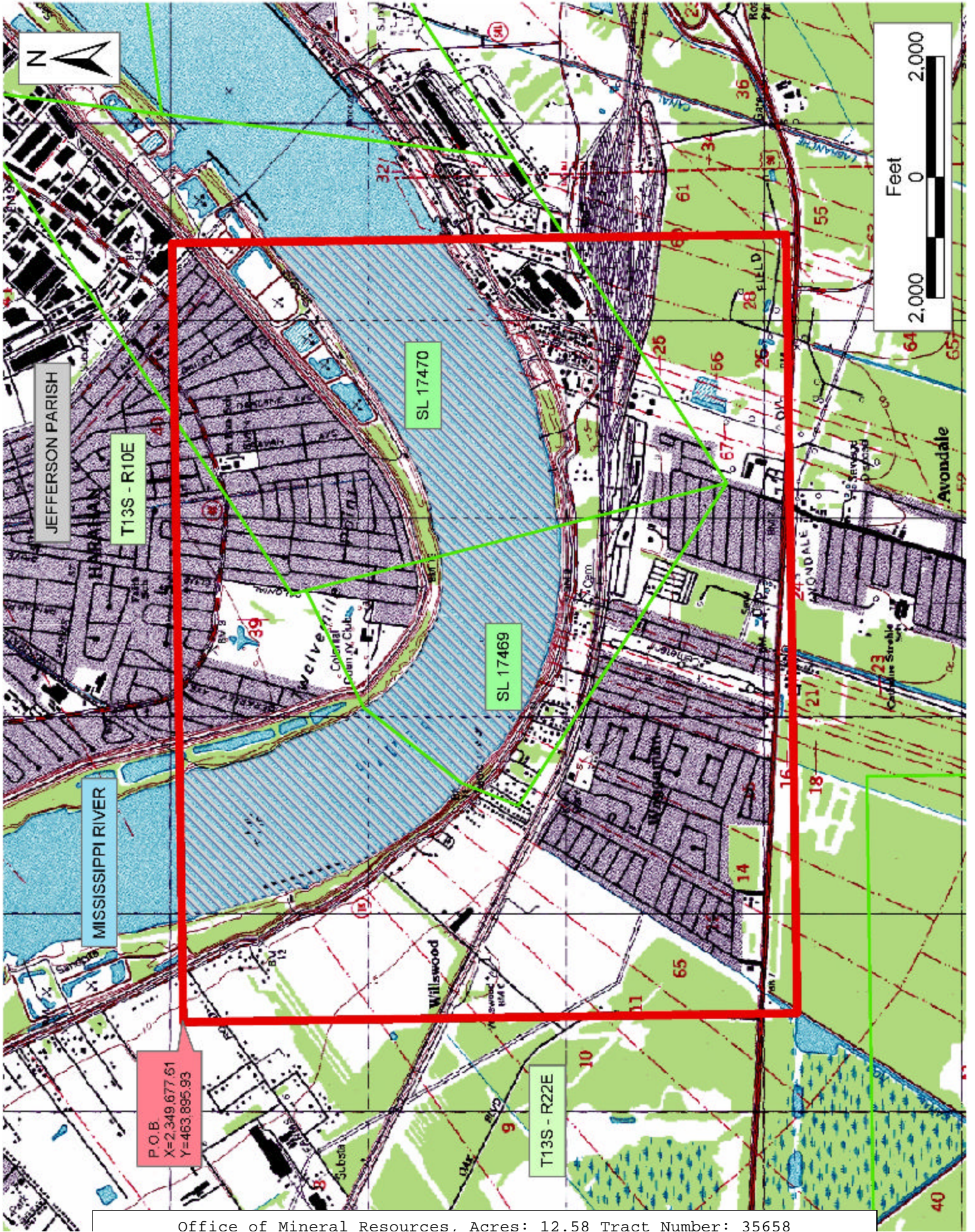
NOTE: "No portion bid will be accepted on this tract."

NOTE: The above description of the Tract nominated for lease has been provided and corrected, where required, exclusively by the nomination party. Any mineral lease selected from this Tract and awarded by the Louisiana State Mineral Board shall be without warranty of any kind, either express, implied, or statutory, including, but not limited to, the implied warranties of merchantability and fitness for a particular purpose. Should the mineral lease awarded by the Louisiana State Mineral Board be subsequently modified, cancelled or abrogated due to the existence of conflicting leases, operating agreements, private claims or other future obligations or conditions which may affect all or any portion of the leased Tract, it shall not relieve the Lessee of the obligation to pay any bonus due thereon to the Louisiana State Mineral Board, nor shall the Louisiana State Mineral Board be obligated to refund any consideration paid by the Lessor prior to such modification, cancellation, or abrogation, including, but not limited to, bonuses, rentals and royalties.

NOTE: The State of Louisiana does hereby reserve, and this lease shall be subject to, the imprescriptible right of surface use in the nature of a servitude in favor of the Department of Natural Resources, including its Offices and Commissions, for the sole purpose of implementing, constructing, servicing and maintaining approved coastal zone management and/or restoration projects. Utilization of any and all rights derived under this lease by the mineral lessee, its agents, successors or assigns, shall not interfere with nor hinder the reasonable surface use by the Department of Natural Resources, its Offices or Commissions, as herein above reserved.

Applicant: Chris Roy

Bidder	Cash Payment	Price/Acre	Rental	Oil	Gas	Other



Office of Mineral Resources. Acres: 12.58 Tract Number: 35658

TRACT 35659 - Jefferson Parish, Louisiana

All of the land adjudicated to and acquired by the State of Louisiana in and through a proper tax sale, including surface and mineral rights, owned by and not already under valid mineral lease from the State of Louisiana on September 10, 2003, situated in Jefferson Parish, Louisiana, and being more fully described as follows: Beginning at a point having Coordinates of X = 2,368,621.13, Y = 456,036.08; thence East 7,219.76 feet to a point having Coordinates of X = 2,375,840.89, Y = 456,036.08; thence South 8,408.29 feet to a point having Coordinates of X = 2,375,840.89, Y = 447,627.79; thence West 7,219.76 feet to a point having Coordinates of X = 2,368,621.13 Y = 447,627.79; thence North 8,408.29 feet to the point of beginning. More specifically containing the following Tax Adjudicated properties: A certain tract of land adjudicated to the State of Louisiana in 1986 for a 1985 assessment, standing in the name of Marion D. Floyd et al, in accordance with adjudication to the State of Louisiana and being further described as Lot 26, Square 103, Claiborne Gardens, containing approximately **0.15 acres**. A certain tract of land adjudicated to the State of Louisiana in 1986 for a 1985 assessment, standing in the name SEC of HUD, in accordance with adjudication to the State of Louisiana and being further described as Lot 22, Square 105, Claiborne Gardens containing approximately **0.16 acres**. A certain tract of land adjudicated to the State of Louisiana in 1986 for a 1985 assessment, standing in the name of Raymond M. Grumbine et al, in accordance with adjudication to the State of Louisiana and being further described as Lot 7, Square 14, Segnette Park containing approximately **0.35 acres**. A certain tract of land adjudicated to the State of Louisiana in 1986 for a 1985 assessment, standing in the name of Raymond M. Grumbine in accordance with adjudication to the State of Louisiana and being further described as Lot 8, Square 14, Segnette Park containing approximately **0.35 acres**. A certain tract of land adjudicated to the State of Louisiana in 1982 for a 1981 assessment, standing in the name of Katherine S. Ward in accordance with adjudication to the State of Louisiana and being further described as Lot K-1, Square 32, Segnette Park containing approximately **0.61 acres**. A certain tract of land adjudicated to the State of Louisiana in 1975 for a 1974 assessment, standing in the name of Andre Arnondin, in accordance with adjudication to the State of Louisiana and being further described as Lot 13, Square 7, Whitehouse Subdivision, containing approximately **0.09 acres**. A certain tract of land adjudicated to the State of Louisiana in 1960 for a 1959 assessment, standing in the name of Mrs. Augustina P. Gonzales Perez and Harris A. Breaux, in accordance with adjudication to the State of Louisiana and being further described as Lot 7, Square 14, Whitehouse Subdivision, containing approximately **0.09 acres**. A certain tract of land adjudicated to the State of Louisiana in 1976 for a 1975 assessment, standing in the name of Denning F. Wright, in accordance with adjudication to the State of Louisiana and being further described as Lot 3, Square 10, Whitehouse Subdivision, containing approximately **0.09 acres**. Containing an aggregate **1.89 acres**, all as more particularly outlined on a plat on file in the Office of Mineral Resources, Department of Natural Resources. All

bearings, distances and coordinates are based on Louisiana Coordinate System of 1927, (North or South Zone), where applicable.

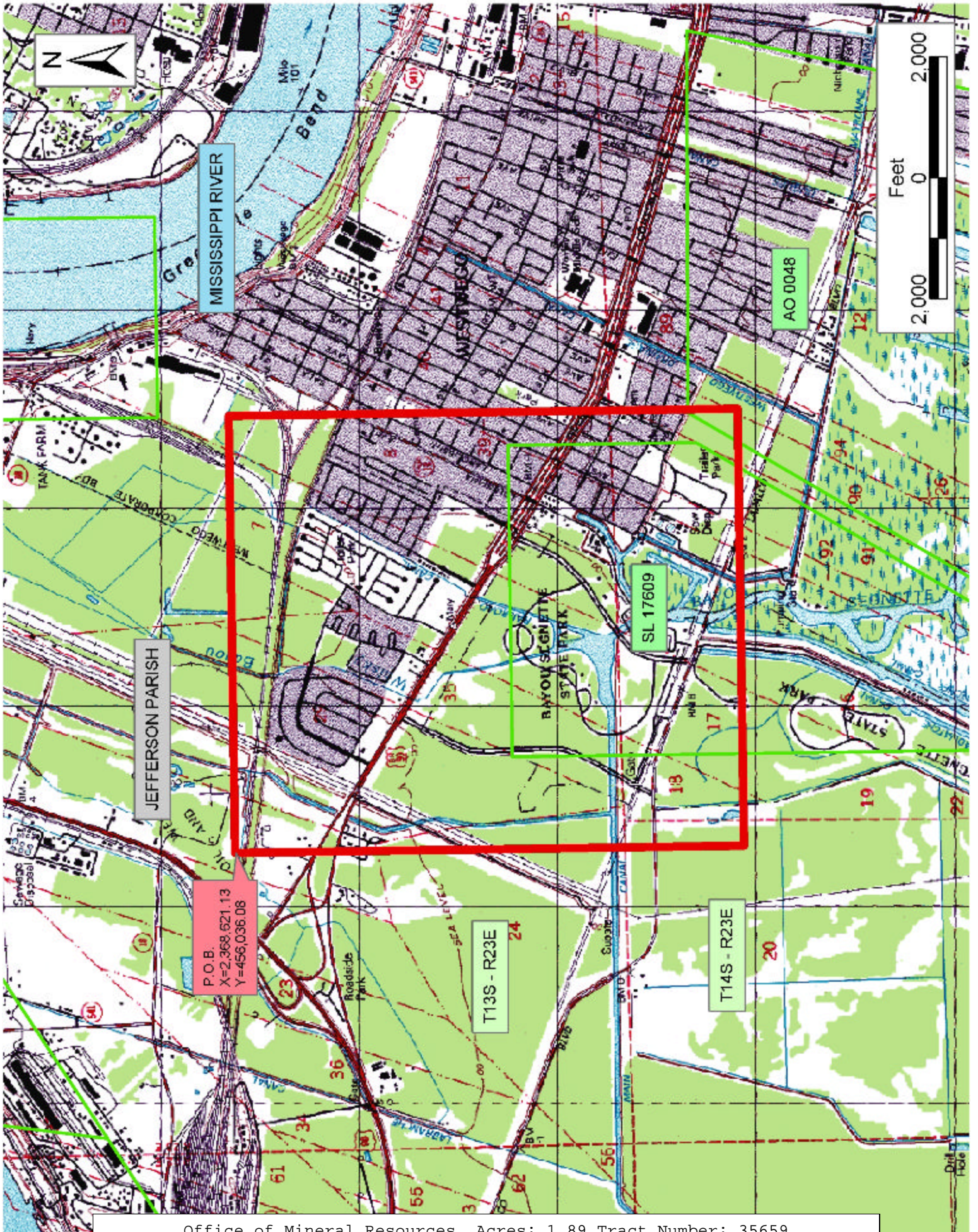
NOTE: "No portion bid will be accepted on this tract."

NOTE: The above description of the Tract nominated for lease has been provided and corrected, where required, exclusively by the nomination party. Any mineral lease selected from this Tract and awarded by the Louisiana State Mineral Board shall be without warranty of any kind, either express, implied, or statutory, including, but not limited to, the implied warranties of merchantability and fitness for a particular purpose. Should the mineral lease awarded by the Louisiana State Mineral Board be subsequently modified, cancelled or abrogated due to the existence of conflicting leases, operating agreements, private claims or other future obligations or conditions which may affect all or any portion of the leased Tract, it shall not relieve the Lessee of the obligation to pay any bonus due thereon to the Louisiana State Mineral Board, nor shall the Louisiana State Mineral Board be obligated to refund any consideration paid by the Lessor prior to such modification, cancellation, or abrogation, including, but not limited to, bonuses, rentals and royalties.

NOTE: The State of Louisiana does hereby reserve, and this lease shall be subject to, the imprescriptible right of surface use in the nature of a servitude in favor of the Department of Natural Resources, including its Offices and Commissions, for the sole purpose of implementing, constructing, servicing and maintaining approved coastal zone management and/or restoration projects. Utilization of any and all rights derived under this lease by the mineral lessee, its agents, successors or assigns, shall not interfere with nor hinder the reasonable surface use by the Department of Natural Resources, its Offices or Commissions, as herein above reserved.

Applicant: Chris Roy

Bidder	Cash Payment	Price/Acre	Rental	Oil	Gas	Other



Office of Mineral Resources. Acres: 1.89 Tract Number: 35659

TRACT 35660 - Jefferson and Orleans Parishes, Louisiana

All of the land adjudicated to and acquired by the State of Louisiana in and through a proper tax sale, including surface and mineral rights, owned by and not already under valid mineral lease from the State of Louisiana on September 10, 2003, situated in Jefferson and Orleans Parishes, Louisiana, and being more fully described as follows: Beginning at a point having Coordinates of X = 2,375,840.89, Y = 456,036.08; thence East 5,224.56 feet to a point having Coordinates of X = 2,381,065.45, Y = 456,036.08; thence South 10,936.78 feet to a point having Coordinates of X = 2,381,065.45, Y = 445,099.30; thence West 5,224.56 feet to a point having Coordinates of X = 2,375,840.89, Y = 445,099.30; thence North 10,936.78 feet to the point of beginning. More specifically containing the following Tax Adjudicated properties: A certain tract of land adjudicated to the State of Louisiana in 1985 for a 1984 assessment, standing in the name of Chester J. Jones, in accordance with adjudication to the State of Louisiana and being further described as Lot 5, Square 1, Barbe Subdivision #2, containing approximately **0.27 acres**. A certain tract of land adjudicated to the State of Louisiana in 1933 for a 1932 assessment, standing in the name of Henry J. Mein, in accordance with adjudication to the State of Louisiana and being further described as Lots 35 & 36, Square 27, Westwego Heights Subdivision, containing approximately **0.14 acres**. A certain tract of land adjudicated to the State of Louisiana in 1976 for a 1975 assessment, standing in the name of L & G Inv. Company, Inc., in the name of E. Durr Owner, in accordance with adjudication to the State of Louisiana and being further described as Lot 14, portions of Lots 13, 37, 38, Square 33, Westwego Heights Subdivision, containing approximately **0.28 acres**. A certain tract of land adjudicated to the State of Louisiana in 1981 for a 1980 assessment, standing in the name of Joseph P. & Kathleen Calegan, in accordance with adjudication to the State of Louisiana and being further described as Lots 13, 14, 15 & 16, Square 9, Westwego Heights Subdivision, containing approximately **0.28 acres**. A certain tract of land adjudicated to the State of Louisiana in 1987 for a 1986 assessment, standing in the name of G. J. Mayronne, in accordance with adjudication to the State of Louisiana and being further described as Lots 7 & 8, Square 29, Westwego Heights Subdivision, containing approximately **0.14 acres**. A certain tract of land adjudicated to the State of Louisiana in 1943 for a 1942 assessment, standing in the name of Vic A. Pitre, in accordance with adjudication to the State of Louisiana and being further described as Lots 17 & 18, Square 25, Westwego Heights Subdivision, containing approximately **0.14 acres**. A certain tract of land adjudicated to the State of Louisiana in 1988 for a 1987 assessment, standing in the name of Gerald J. & Claudia Murphy, in accordance with adjudication to the State of Louisiana and being further described as Lot 31A, Square 61, Whitehouse Subdivision, containing approximately **0.09 acres**. A certain tract of land adjudicated to the State of Louisiana in 1988 for a 1987 assessment, standing in the name of Paul A. Paciera Jr., in accordance with adjudication to the State of Louisiana and being further described as Lots 9 & 10, Square 46, and Lots 1, 2, 3, Square 46, Whitehouse Subdivision, containing approximately **0.18 acres**. A certain tract of land

adjudicated to the State of Louisiana in 1986 for a 1985 assessment, standing in the name of Landis H. Taylor, in accordance with adjudication to the State of Louisiana and being further described as Lot 27A, Square 56, Whitehouse Ext. Subdivision, containing approximately **0.17 acres**. A certain tract of land adjudicated to the State of Louisiana in 1983 for a 1982 assessment, standing in the name of Jeffery J. Brasset Jr., in accordance with adjudication to the State of Louisiana and being further described as Lot 28, Homewood Subdivision, containing approximately **0.12 acres**. A certain tract of land adjudicated to the State of Louisiana in 1974 for a 1973 assessment, standing in the name of Duffy U. Guidry, in accordance with adjudication to the State of Louisiana and being further described as Lot 33, Beatty Subdivision, containing approximately **0.13 acres**. A certain tract of land adjudicated to the State of Louisiana in 1985 for a 1984 assessment, standing in the name of Olivia W. Howard, in accordance with adjudication to the State of Louisiana and being further described as Lot 32, of original Lot 5, Klein Place, containing approximately **0.13 acres**. A certain tract of land adjudicated to the State of Louisiana in 1986 for a 1985 assessment, standing in the name of Elwood M. Woodlege, in accordance with adjudication to the State of Louisiana and being further described as Lot 5 & Portion of 4, Square 1, Pearl Subdivision, containing approximately **0.23 acres**. A certain tract of land adjudicated to the State of Louisiana in 1981 for a 1980 assessment, standing in the name of Joseph P. & Kathleen Calegan, in accordance with adjudication to the State of Louisiana and being further described as Lot C, Sala Plantation Subdivision, containing approximately **0.20 acres**. A certain tract of land adjudicated to the State of Louisiana in 1984 for a 1983 assessment, standing in the name of Evelyn J. A. Toups, in accordance with adjudication to the State of Louisiana and being further described as Lot B, Sala Plantation Subdivision, containing approximately **0.09 acres**. A certain tract of land adjudicated to the State of Louisiana in 1986 for a 1985 assessment, standing in the name of Gaylord & Elizabeth Wilson, in accordance with adjudication to the State of Louisiana and being further described as Lot 50 C, Sala Plantation Subdivision, containing approximately **0.09 acres**. A certain tract of land adjudicated to the State of Louisiana in 1987 for a 1986 assessment, standing in the name of Quentin Homes, Inc., in accordance with adjudication to the State of Louisiana and being further described as Lot 108, The Thicket Subdivision, containing approximately **0.17 acres**. A certain tract of land adjudicated to the State of Louisiana in 1982 for a 1981 assessment, standing in the name of Hialeah Builders, Inc., in accordance with adjudication to the State of Louisiana and being further described as Lot 19, The Thicket Subdivision, containing approximately **0.17 acres**. A certain tract of land adjudicated to the State of Louisiana in 1984 for a 1983 assessment, standing in the name of Phillip Callahan & Yelitza Callahan, in accordance with adjudication to the State of Louisiana and being further described as Lot 38, The Thicket Subdivision, containing approximately **0.17 acres**. A certain tract of land adjudicated to the State of Louisiana in 1985 for a 1984 assessment, standing in the name of Crescent Land Development, in accordance with adjudication to the State of Louisiana and being further

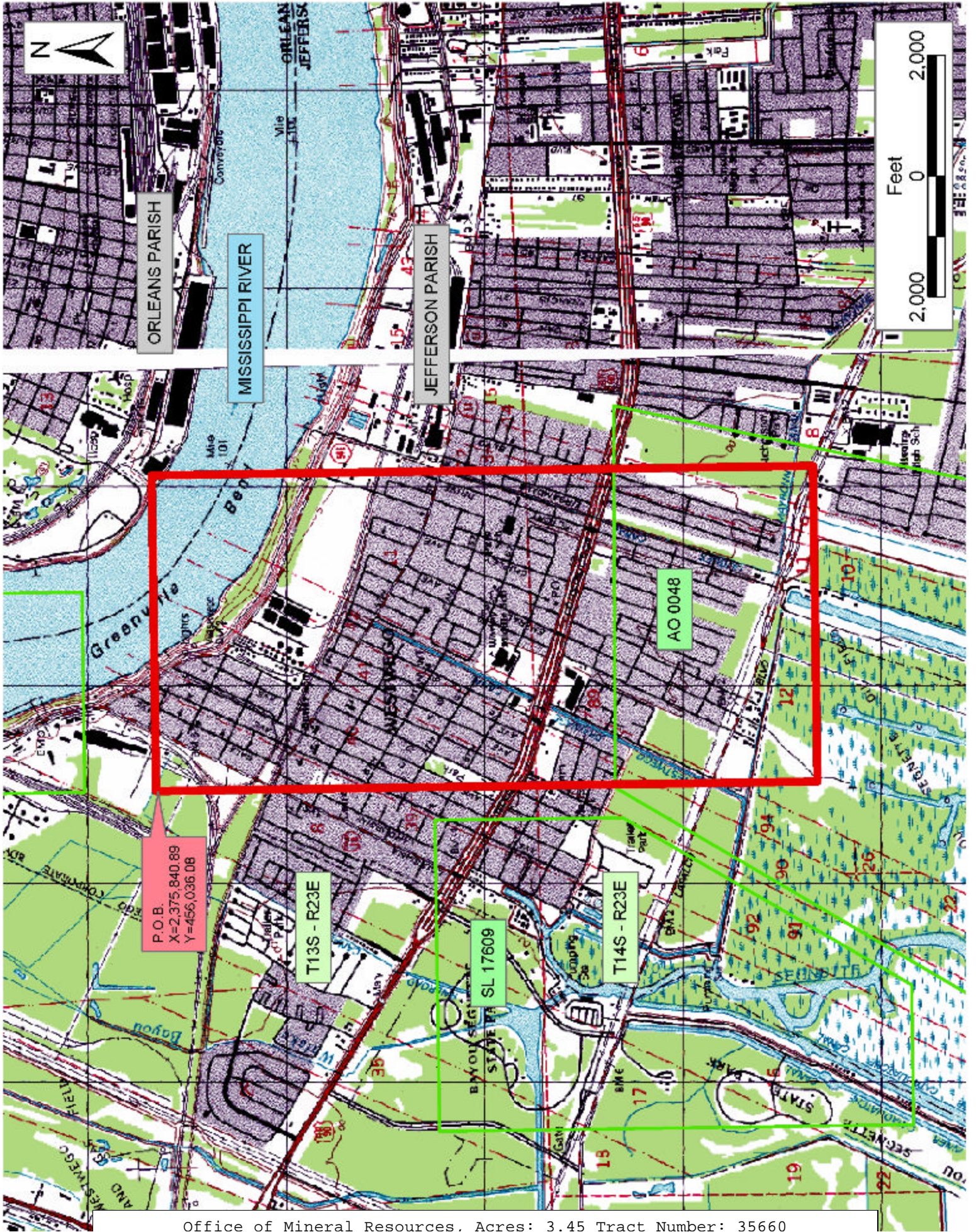
described as Lot 132, The Thicket Subdivision, containing approximately **0.17 acres**. A certain tract of land adjudicated to the State of Louisiana in 1981 for a 1980 assessment, standing in the name of Harvey & Beverly L. Morgan, in accordance with adjudication to the State of Louisiana and being further described as Lot 8, Square 18, Whitehouse Subdivision, containing approximately **0.09 acres**. Containing an aggregate **3.45 acres**, all as more particularly outlined on a plat on file in the Office of Mineral Resources, Department of Natural Resources. All bearings, distances and coordinates are based on Louisiana Coordinate System of 1927, (North or South Zone), where applicable.

NOTE: "No portion bid will be accepted on this tract."

NOTE: The above description of the Tract nominated for lease has been provided and corrected, where required, exclusively by the nomination party. Any mineral lease selected from this Tract and awarded by the Louisiana State Mineral Board shall be without warranty of any kind, either express, implied, or statutory, including, but not limited to, the implied warranties of merchantability and fitness for a particular purpose. Should the mineral lease awarded by the Louisiana State Mineral Board be subsequently modified, cancelled or abrogated due to the existence of conflicting leases, operating agreements, private claims or other future obligations or conditions which may affect all or any portion of the leased Tract, it shall not relieve the Lessee of the obligation to pay any bonus due thereon to the Louisiana State Mineral Board, nor shall the Louisiana State Mineral Board be obligated to refund any consideration paid by the Lessor prior to such modification, cancellation, or abrogation, including, but not limited to, bonuses, rentals and royalties.

Applicant: Chris Roy

Bidder	Cash Payment	Price/Acre	Rental	Oil	Gas	Other



TRACT 35661 - Jefferson and Orleans Parishes, Louisiana

All of the mineral rights only under land adjudicated to and acquired by the State of Louisiana in and through a proper tax sale, and subsequently alienated by the State which retained the mineral rights thereto, and which is not under valid mineral lease from the State of Louisiana on September 10, 2003, situated in Jefferson and Orleans Parishes, Louisiana, and being more fully described as follows: Beginning at a point having Coordinates of X = 2,375,840.89, Y = 456,036.08; thence East 5,224.56 feet to a point having Coordinates of X = 2,381,065.45, Y = 456,036.08; thence South 10,936.78 feet to a point having Coordinates of X = 2,381,065.45, Y = 445,099.30; thence West 5,224.56 feet to a point having Coordinates of X = 2,375,840.89, Y = 445,099.30; thence North 10,936.78 feet to the point of beginning. More specifically containing the following Tax Adjudicated properties: Certain tracts of land adjudicated to the State of Louisiana for a 1933 assessment, standing in the name of West Bank Development Co, Inc, in accordance with adjudication to the State of Louisiana and being further described as Lots 21, 22, 23, 24, 25, 26, 35, 36, 45 and 46, Block 14, Lots 3 and 4, Block 15, Lots 19 and 20, Block 16, Lots 3, 4, 5, 6, 13 and 14, Block 18, Lots 21, 22, 37 and 38, Block 19, Lots 9 and 10, Block 20, Lots 13 and 14, Block 21, Lots 15 and 16, Block 25, Lots 9 and 10, Block 27, Lots 9, 10, 25, 26, 27, 28, 33 and 34, Block 28, Lots 5, 6, 35, 36, 47 and 48, Block 29, Lots 13 and 14, Block 30, Lots 37 and 38, Block 31, Lots 11, 12, 43 and 44, Block 32, Westwego Heights Subdivision, containing approximately **5.40 acres**, and being further described under Louisiana Patent #13621. A certain tract of land adjudicated to the State of Louisiana in 1936 for a 1935 assessment standing in the name of Leon and Oliver Dufour, in accordance with adjudication to the State of Louisiana and being further described as Lots 23 and 24, Square 10, Westwego Heights Subdivision, containing approximately **0.14 acres**, and being those same tracts of land referred to in the State of Louisiana Patent No. 14498. A certain tract of land adjudicated to the State of Louisiana in 1940 for a 1939 assessment, standing in the name of J. H. Quinn, in accordance with adjudication to the State of Louisiana and being further described as Lots 23 and 24, Square 16, Westwego Heights Subdivision, containing approximately **0.14 acres**, and being those same tracts of land referred to in the State of Louisiana Patent No. 14620. A certain tract of land adjudicated to the State of Louisiana in 1942 for a 1941 assessment, standing in the name of John Danner, in accordance with adjudication to the State of Louisiana and being further described as Lots 19, 20, 21 and 22, Square 9, Westwego Heights Subdivision, containing approximately **0.28 acres**, and being those same tracts of land referred to in the State of Louisiana Patent No. 18751. Containing an aggregate **5.96 acres**, all as more particularly outlined on a plat on file in the Office of Mineral Resources, Department of Natural Resources. All bearings, distances and coordinates are based on Louisiana Coordinate System of 1927, (North or South Zone), where applicable.

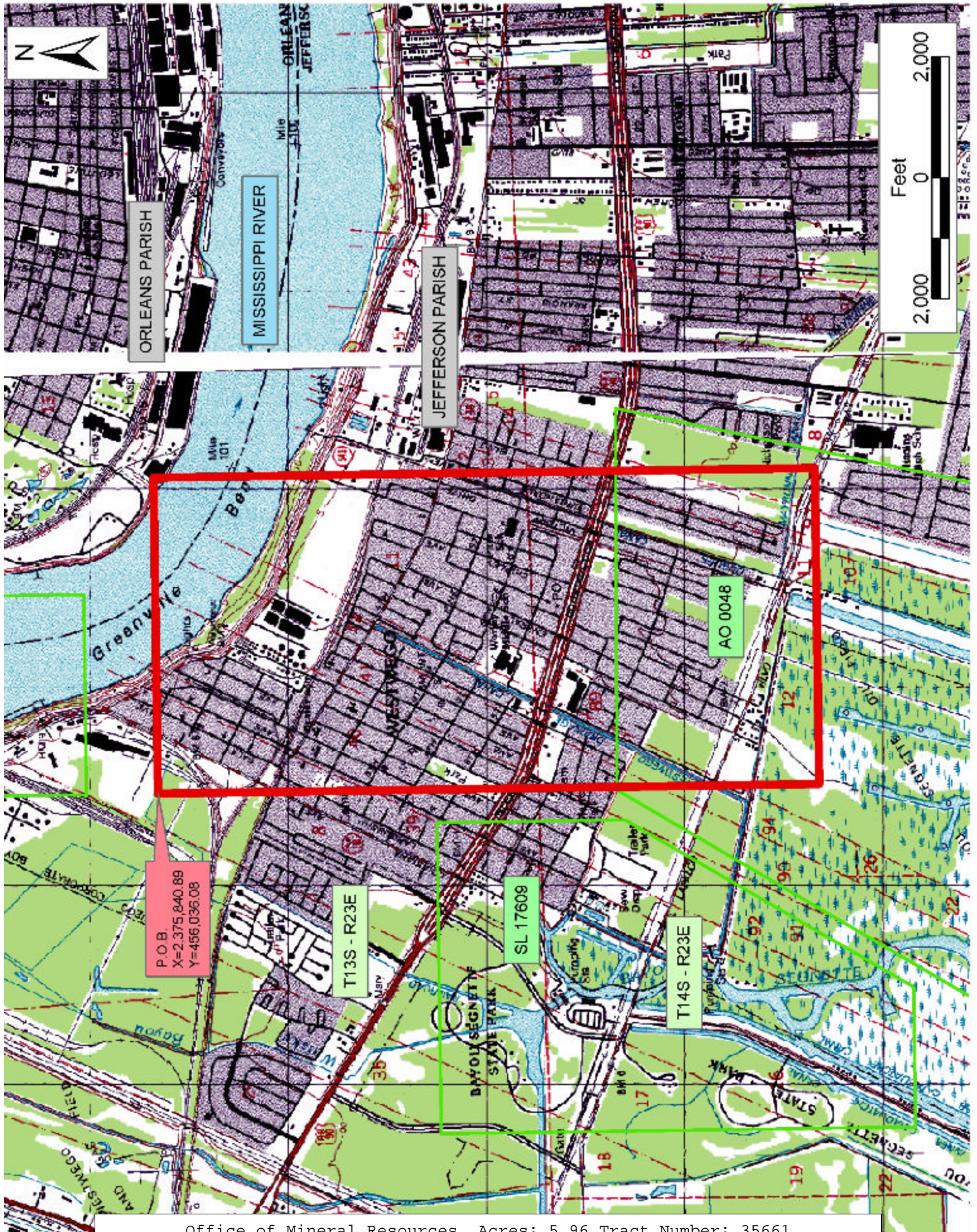
NOTE: "No portion bid will be accepted on this tract."

NOTE: The above description of the Tract nominated for lease has been provided and corrected, where required, exclusively by the nomination party. Any mineral lease selected from this Tract and awarded by the Louisiana State Mineral Board shall be without warranty of any kind, either express, implied, or statutory, including, but not limited to, the implied warranties of merchantability and fitness for a particular purpose. Should the mineral lease awarded by the Louisiana State Mineral Board be subsequently modified, cancelled or abrogated due to the existence of conflicting leases, operating agreements, private claims or other future obligations or conditions which may affect all or any portion of the leased Tract, it shall not relieve the Lessee of the obligation to pay any bonus due thereon to the Louisiana State Mineral Board, nor shall the Louisiana State Mineral Board be obligated to refund any consideration paid by the Lessor prior to such modification, cancellation, or abrogation, including, but not limited to, bonuses, rentals and royalties.

NOTE: The State of Louisiana does hereby reserve, and this lease shall be subject to, the imprescriptible right of surface use in the nature of a servitude in favor of the Department of Natural Resources, including its Offices and Commissions, for the sole purpose of implementing, constructing, servicing and maintaining approved coastal zone management and/or restoration projects. Utilization of any and all rights derived under this lease by the mineral lessee, its agents, successors or assigns, shall not interfere with nor hinder the reasonable surface use by the Department of Natural Resources, its Offices or Commissions, as herein above reserved.

Applicant: Chris Roy

Bidder	Cash Payment	Price/Acre	Rental	Oil	Gas	Other



P.O.B.
 X=2,375,840.89
 Y=456,036.08

AO 0048

T13S - R23E

SL 17609

T14S - R23E