

TRACT 35652 - Ouachita Parish, Louisiana

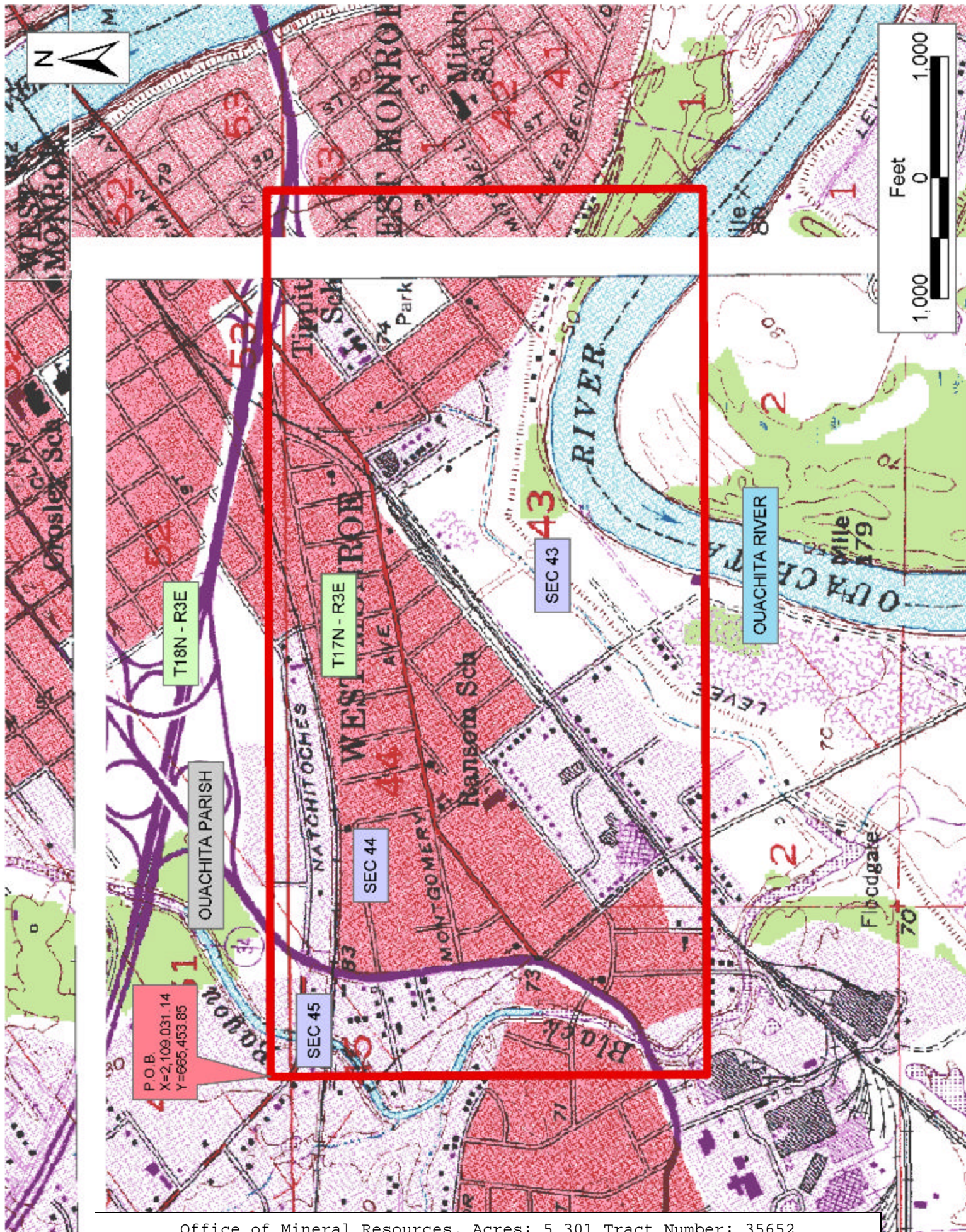
A certain Tract of land, excluding the beds and bottoms of all navigable waters, belonging to and not presently under mineral lease from City Of West Monroe on September 10, 2003, being more fully described as follows: Beginning at a point having Coordinates of X = 2,109,031.14 and Y = 665,453.85; thence East 7,327.27 feet to a point having Coordinates of X = 2,116,358.42 and Y = 665,453.85; thence South 3,606.16 feet to a point having Coordinates of X = 2,116,358.42 and Y = 661,847.68; thence West 7,327.27 feet to a point having Coordinates of X = 2,109,031.14 and Y = 661,847.68; thence North 3,606.16 feet to the point of beginning. More specifically containing a parcel of land, located in Section 43, Township 17 North, Range 3 East, Ouachita Parish, Louisiana, excluding beds and bottoms of all navigable waters described as follows: Starting at the intersection of the North line of Lazarre Avenue and the West line of Olin Mathieson's Chemical Corporation's abandoned railroad right-of-way and running Northwesterly along said right-of-way line a distance of 20.2 feet to the point of beginning; thence South 53 degrees 05 minutes West, a distance of 400 feet more or less to the Ouachita River, thence in a Westerly direction along the pool stage water edge of the river, a distance of 750 feet more or less to a point in the center of a slough at its intersection with the Ouachita River, thence North 50 degrees 50 minutes West a distance of 150 feet more or less along the centerline of said slough to a point on the Easterly line of property sold by the Ouachita National Bank to Standard Oil Company of Louisiana, recorded in Conveyance Book 250, page 79, records of Ouachita Parish, Louisiana, thence North 9 degrees 42 minutes East, a distance of 165.0 feet along the Standard Oil Company Easterly property line, thence North 55 degrees 27 minutes East, a distance of 403.1 feet to the Southeast corner of said Standard Oil Company property, thence North 50 degrees East a distance of 100 feet more or less to the center of a slough, thence in a Northeasterly direction following the centerline of said slough a distance of 400 feet more or less to the West line of Olin Mathieson Chemical Corporation's abandoned railroad right-of-way, thence in a Southeasterly direction along West line of said abandoned railroad right-of-way, a distance of 560 feet more or less to the point of beginning, containing approximately **5.301 acres**, all as more particularly outlined on a plat on file in the Office of Mineral Resources, Department of Natural Resources. The description is based on information provided by the State Agency regarding location and ownership of surface and mineral rights. All distances, bearing and coordinates, if applicable, are based on the Louisiana Coordinate System of 1927, (North or South Zone).

NOTE: The above description of the Tract nominated for lease has been provided and corrected, where required, exclusively by the nomination party. Any mineral lease selected from this Tract and awarded by the Louisiana State Mineral Board shall be without warranty of any kind, either express, implied, or statutory, including, but not limited to, the implied warranties of merchantability and fitness for a particular purpose. Should the mineral lease awarded by the Louisiana State Mineral

Board be subsequently modified, cancelled or abrogated due to the existence of conflicting leases, operating agreements, private claims or other future obligations or conditions which may affect all or any portion of the leased Tract, it shall not relieve the Lessee of the obligation to pay any bonus due thereon to the Louisiana State Mineral Board, nor shall the Louisiana State Mineral Board be obligated to refund any consideration paid by the Lessor prior to such modification, cancellation, or abrogation, including, but not limited to, bonuses, rentals and royalties.

Applicant: Brammer Engineering, Inc. to Agency and by Resolution from the City Of West Monroe authorizing the Mineral Board to act in its behalf

Bidder	Cash Payment	Price/ Acre	Rental	Oil	Gas	Other



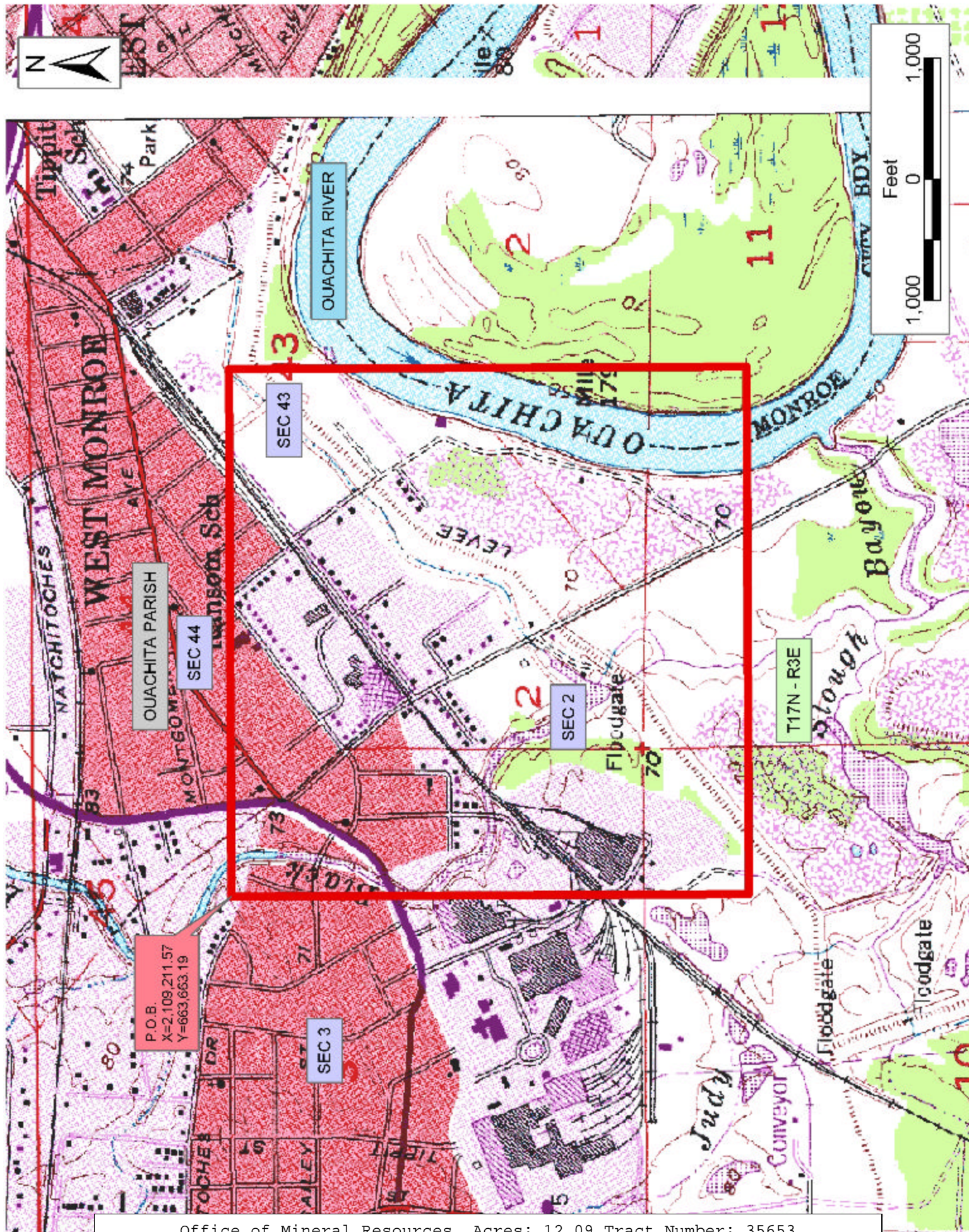
TRACT 35653 - Ouachita Parish, Louisiana

A certain Tract of land, excluding the beds and bottoms of all navigable waters, belonging to and not presently under mineral lease from Ouachita Parish Police Jury on September 10, 2003, being more fully described as follows: All streets, roads, alleys and other easements belonging to Ouachita Parish Police Jury by dedication, or otherwise, located in Sections 2, 43, 44 and 45, Township 17 North, Range 3 East, Ouachita Parish, Louisiana, excluding beds and bottoms of all navigable waters and being located within the following described tract: Beginning at a point having Coordinates of X = 2,109,211.57 and Y = 663,663.19; thence East 4,351.53 feet to a point having Coordinates of X = 2,113,563.10 and Y = 663,663.19; thence South 4,269.33 feet to a point having Coordinates of X = 2,113,563.10 and Y = 659,393.86; thence West 4,351.53 feet to a point having Coordinates of X = 2,109,211.57 and Y = 659,393.86; thence North 4,269.33 feet to the point of beginning, containing approximately **12.09 acres**, all as more particularly outlined on a plat on file in the Office of Mineral Resources, Department of Natural Resources. The description is based on information provided by the State Agency regarding location and ownership of surface and mineral rights. All distances, bearing and coordinates, if applicable, are based on the Louisiana Coordinate System of 1927, (North or South Zone).

NOTE: The above description of the Tract nominated for lease has been provided and corrected, where required, exclusively by the nomination party. Any mineral lease selected from this Tract and awarded by the Louisiana State Mineral Board shall be without warranty of any kind, either express, implied, or statutory, including, but not limited to, the implied warranties of merchantability and fitness for a particular purpose. Should the mineral lease awarded by the Louisiana State Mineral Board be subsequently modified, cancelled or abrogated due to the existence of conflicting leases, operating agreements, private claims or other future obligations or conditions which may affect all or any portion of the leased Tract, it shall not relieve the Lessee of the obligation to pay any bonus due thereon to the Louisiana State Mineral Board, nor shall the Louisiana State Mineral Board be obligated to refund any consideration paid by the Lessor prior to such modification, cancellation, or abrogation, including, but not limited to, bonuses, rentals and royalties.

Bidder	Cash Payment	Price/ Acre	Rental	Oil	Gas	Other

Applicant: Brammer Engineering, Inc. to Agency and by Resolution from the Ouachita Parish Police Jury authorizing the Mineral Board to act in its behalf



TRACT 35654 - Ouachita Parish, Louisiana

A certain Tract of land, excluding the beds and bottoms of all navigable waters, belonging to and not presently under mineral lease from City Of West Monroe on September 10, 2003, being more fully described as follows: All streets, roads, alleys and other easements belonging to the City of West Monroe by dedication, or otherwise, located in Sections 43, 44 and 45, Township 17 North, Range 3 East, Ouachita Parish, Louisiana, excluding beds and bottoms of all navigable waters, containing approximately **42.948 acres**, all as more particularly outlined on a plat on file in the Office of Mineral Resources, Department of Natural Resources. The description is based on information provided by the State Agency regarding location and ownership of surface and mineral rights. All distances, bearing and coordinates, if applicable, are based on the Louisiana Coordinate System of 1927, (North or South Zone).

NOTE: The above description of the Tract nominated for lease has been provided and corrected, where required, exclusively by the nomination party. Any mineral lease selected from this Tract and awarded by the Louisiana State Mineral Board shall be without warranty of any kind, either express, implied, or statutory, including, but not limited to, the implied warranties of merchantability and fitness for a particular purpose. Should the mineral lease awarded by the Louisiana State Mineral Board be subsequently modified, cancelled or abrogated due to the existence of conflicting leases, operating agreements, private claims or other future obligations or conditions which may affect all or any portion of the leased Tract, it shall not relieve the Lessee of the obligation to pay any bonus due thereon to the Louisiana State Mineral Board, nor shall the Louisiana State Mineral Board be obligated to refund any consideration paid by the Lessor prior to such modification, cancellation, or abrogation, including, but not limited to, bonuses, rentals and royalties.

Applicant: Brammer Engineering, Inc. to Agency and by Resolution from the City Of West Monroe authorizing the Mineral Board to act in its behalf

Bidder	Cash Payment	Price/ Acre	Rental	Oil	Gas	Other

