

TRACT 35600 - Portion of Block 26, West Delta Area, Plaquemines Parish, Louisiana

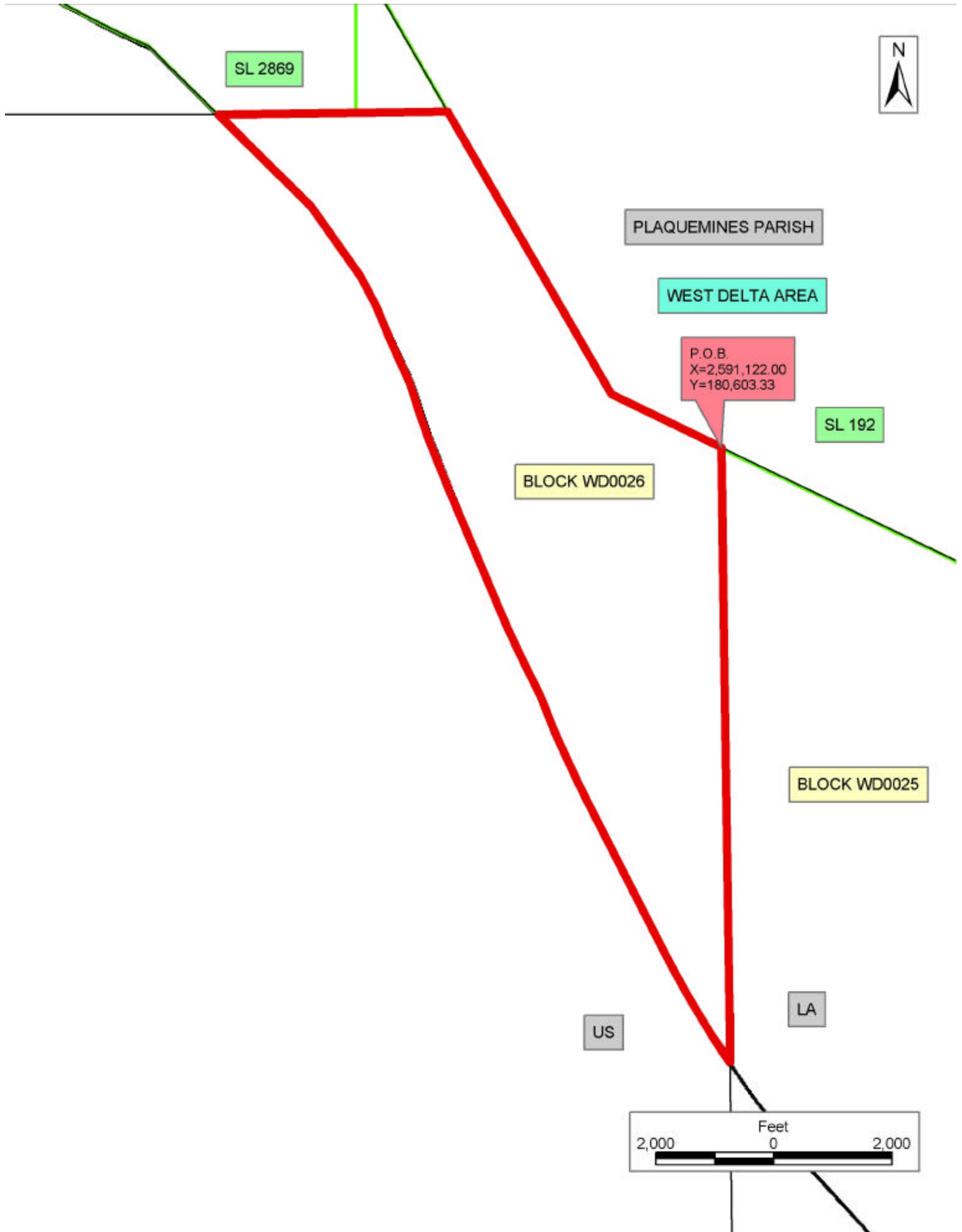
The beds and bottoms of all water bodies belonging to the State of Louisiana located in that portion of Block 26, West Delta Area, together with any present lands formed by accretion to the shoreline, located in Plaquemines Parish, Louisiana, and not presently under mineral lease on September 10, 2003, the geographical area of which is more fully described as follows: Beginning at a point on the line being the Eastern boundary of Block 26, West Delta Area and the Northeast corner of said Block 26 having Coordinates of X = 2,591,122.00 and Y = 180,603.33; thence South 10,424.22 feet along the East line of said Block 26 to a point having Coordinates of X = 2,591,122.00 and Y = 170,179.11; thence Northwesterly on an arc having a radius of 18,240.60 feet and a center at X = 2,606,370 feet and Y = 180,190 feet to a point having Coordinates of X = 2,590,016.00 feet and Y = 172,111.00 feet; thence North 26 degrees 17 minutes 30 seconds West 2,810.77 feet to a point having Coordinates of X = 2,588,771.00 feet and Y = 174,631.00; thence Northwesterly on an arc having a radius of 18,240.60 feet and a center at X = 2,605,125 feet and Y = 182,710 feet to a point having Coordinates of X = 2,587,979.00, and Y = 176,487.00 feet; thence Northwesterly on an arc having a radius of 18,240.60 feet and a center at X = 2,604,220 feet and Y = 184,790 feet to a point having Coordinates of X = 2,587,325.00, and Y = 177,913.00 feet; thence North 22 degrees 08 minutes 57 seconds West 2,294.31 feet to a point having Coordinates of X = 2,586,460.00 and Y = 180,038.00; thence Northwesterly on an arc having a radius of 18,240.60 feet and a center at X = 2,603,355 feet and Y = 186,915 feet to a point having Coordinates of X = 2,585,856.00, and Y = 181,767.00 feet; thence Northwesterly on an arc having a radius of 18,240.60 feet and a center at X = 2,602,425 feet and Y = 189,395 feet to a point having Coordinates of X = 2,585,513.00 feet, and Y = 182,560.00 feet; thence North 21 degrees 59 minutes 48 seconds West 544.65 feet to a point having Coordinates of X = 2,585,309.00 and Y = 183,065.00; thence North 26 degrees 44 minutes 30 seconds West 580.04 feet to a point having Coordinates of X = 2,585,048.00 and Y = 183,583.00; thence North 34 degrees 33 minutes 40 seconds West 1,459.58 feet to a point having Coordinates of X = 2,584,220.00 and Y = 184,785.00; thence North 44 degrees 34 minutes 54 seconds West 2,212.00 feet to a point having Coordinates of X = 2,582,667.34 and Y = 186,360.50; thence East 3,894.20 feet to a point having Coordinates of X = 2,586,561.54 and Y = 186,360.50; thence South 29 degrees 15 minutes 08 seconds East 5,536.74 feet to a point having Coordinates of X = 2,589,267.10 and Y = 181,529.82; thence South 63 degrees 27 minutes 31 seconds East 2,073.41 feet to the point of beginning, **LESS AND EXCEPT** all that portion of State Lease No. 192 that may lie within the above described tract, containing approximately **1,078.83 acres**, all as more particularly outlined on a plat on file in the Office of Mineral Resources, Department of Natural Resources. All bearings, distances and coordinates are based on Louisiana Coordinate System of 1927, (North or South Zone).

NOTE: The above description of the Tract nominated for lease has been provided and corrected, where required, exclusively by the nomination party. Any mineral lease selected from this Tract and awarded by the Louisiana State Mineral Board shall be without warranty of any kind, either express, implied, or statutory, including, but not limited to, the implied warranties of merchantability and fitness for a particular purpose. Should the mineral lease awarded by the Louisiana State Mineral Board be subsequently modified, cancelled or abrogated due to the existence of conflicting leases, operating agreements, private claims or other future obligations or conditions which may affect all or any portion of the leased Tract, it shall not relieve the Lessee of the obligation to pay any bonus due thereon to the Louisiana State Mineral Board, nor shall the Louisiana State Mineral Board be obligated to refund any consideration paid by the Lessor prior to such modification, cancellation, or abrogation, including, but not limited to, bonuses, rentals and royalties.

NOTE: The State of Louisiana does hereby reserve, and this lease shall be subject to, the imprescriptible right of surface use in the nature of a servitude in favor of the Department of Natural Resources, including its Offices and Commissions, for the sole purpose of implementing, constructing, servicing and maintaining approved coastal zone management and/or restoration projects. Utilization of any and all rights derived under this lease by the mineral lessee, its agents, successors or assigns, shall not interfere with nor hinder the reasonable surface use by the Department of Natural Resources, its Offices or Commissions, as herein above reserved.

Applicant: S.R. Verret

Bidder	Cash Payment	Price/ Acre	Rental	Oil	Gas	Other



TRACT 35601 - Portion of Block 19, Grand Isle Area, and Block 37, West Delta Area, Plaquemines Parish, Louisiana

The beds and bottoms of all water bodies belonging to the State of Louisiana located in that portion of Block 19, Grand Isle Area, and Block 37, West Delta Area, together with any present lands formed by accretion to the shoreline, located in Plaquemines Parish, Louisiana, and not presently under mineral lease on September 10, 2003, the geographical area of which is more fully described as follows: Beginning at the Northeast corner of State Lease No. 17359 said corner also being a point on the Northern boundary of Block 19, Grand Isle Area having Coordinates of X = 2,466,770.89 and Y = 185,535.39; thence East 5,647.04 feet along the said Northern boundary of Block 19, Grand Isle Area to its Northeast corner said corner also being a point on the Western boundary of Block 37, West Delta Area having Coordinates of X = 2,472,417.93 and Y = 185,535.39; thence North 825.11 feet along the said Western boundary of Block 37, West Delta Area to its Northwest corner having Coordinates of X = 2,472,417.93 and Y = 186,360.50; thence East 3,754.07 feet along the Northern boundary of said Block 37, West Delta Area to its Northeast corner having Coordinates of X = 2,476,172.00 and Y = 186,360.50; thence South 2,417.64 feet along the Eastern boundary of said Block 37, West Delta Area to a point on the three mile line having Coordinates of X = 2,476,172.00 and Y = 183,942.86; thence Southwesterly along the said three mile line in a straight line to an intersection point on the West boundary of said Block 37, West Delta Area, said boundary also being the Eastern boundary of Block 19, Grand Isle Area having Coordinates of X = 2,472,417.93 and Y = 183,251.61; thence Southwesterly along the said three mile line in a straight line to the Southeast corner of said State Lease No. 17359 having Coordinates of X = 2,466,770.89 and Y = 182,211.80; thence North 3,323.59 feet along the Eastern boundary of said State Lease No. 17359 to the point of beginning, containing approximately **601.61 acres**, all as more particularly outlined on a plat on file in the Office of Mineral Resources, Department of Natural Resources. All bearings, distances and coordinates are based on Louisiana Coordinate System of 1927, (North or South Zone).

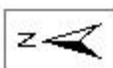
NOTE: The above description of the Tract nominated for lease has been provided and corrected, where required, exclusively by the nomination party. Any mineral lease selected from this Tract and awarded by the Louisiana State Mineral Board shall be without warranty of any kind, either express, implied, or statutory, including, but not limited to, the implied warranties of merchantability and fitness for a particular purpose. Should the mineral lease awarded by the Louisiana State Mineral Board be subsequently modified, cancelled or abrogated due to the existence of conflicting leases, operating agreements, private claims or other future obligations or conditions which may affect all or any portion of the leased Tract, it shall not relieve the Lessee of the obligation to pay any bonus due thereon to the Louisiana State Mineral Board, nor shall the Louisiana State Mineral Board be obligated to refund any consideration

paid by the Lessor prior to such modification, cancellation, or abrogation, including, but not limited to, bonuses, rentals and royalties.

NOTE: The State of Louisiana does hereby reserve, and this lease shall be subject to, the imprescriptible right of surface use in the nature of a servitude in favor of the Department of Natural Resources, including its Offices and Commissions, for the sole purpose of implementing, constructing, servicing and maintaining approved coastal zone management and/or restoration projects. Utilization of any and all rights derived under this lease by the mineral lessee, its agents, successors or assigns, shall not interfere with nor hinder the reasonable surface use by the Department of Natural Resources, its Offices or Commissions, as herein above reserved.

Applicant: Erin Bila

Bidder	Cash Payment	Price/ Acre	Rental	Oil	Gas	Other



BLOCK WD0015

WEST DELTA AREA

BLOCK WD0036

LOUISIANA
UNITED STATES

BLOCK WD0014

BLOCK WD0037

PLAQUEMINES PARISH

BLOCK GI0009

GRAND ISLE AREA

P.O.B.
X=2,466,770.89
Y=185,535.39

BLOCK GI0019

S.L. 17359



TRACT 35602 - Portion of Block 36, West Delta Area, Plaquemines Parish, Louisiana

The beds and bottoms of all water bodies belonging to the State of Louisiana located in that portion of Block 36, West Delta Area, together with any present lands formed by accretion to the shoreline, located in Plaquemines Parish, Louisiana, and not presently under mineral lease on September 10, 2003, the geographical area of which is more fully described as follows: Beginning at a the Northwest corner of Block 36, West Delta Area having Coordinates of X = 2,476,172.00 and Y = 186,360.50; thence East 10,450.00 feet along the Northern boundary of said Block 36, to its Northeast corner having Coordinates of X = 2,486,622.00 and Y = 186,360.50; thence South 493.45 feet along the Eastern boundary of said Block 36, to a point on the three mile line having Coordinates of X = 2,486,622.00 and Y = 185,867.05; thence Southwesterly along the said three mile line in a straight line to an intersection point on the West boundary of said Block 36, having Coordinates of X = 2,476,172.00 and Y = 183,942.86; thence North 2,417.64 feet along the said West boundary of Block 36, to the point of beginning, containing approximately **349.18 acres, LESS AND EXCEPT** that portion thereof, if any, lying seaward of the line three nautical miles from the coast line of Louisiana, as said three mile line has been decreed by the Supreme Court of the United States, as determined by a Special Master appointed therein, in litigation styled **United States v. State of Louisiana et al No. 9 Original**, in 1975, all as more particularly outlined on a plat in the Office of Mineral Resources, Department of Natural Resources. All bearings, distances and coordinates are based on the Louisiana Coordinate System of 1927, (South Zone).

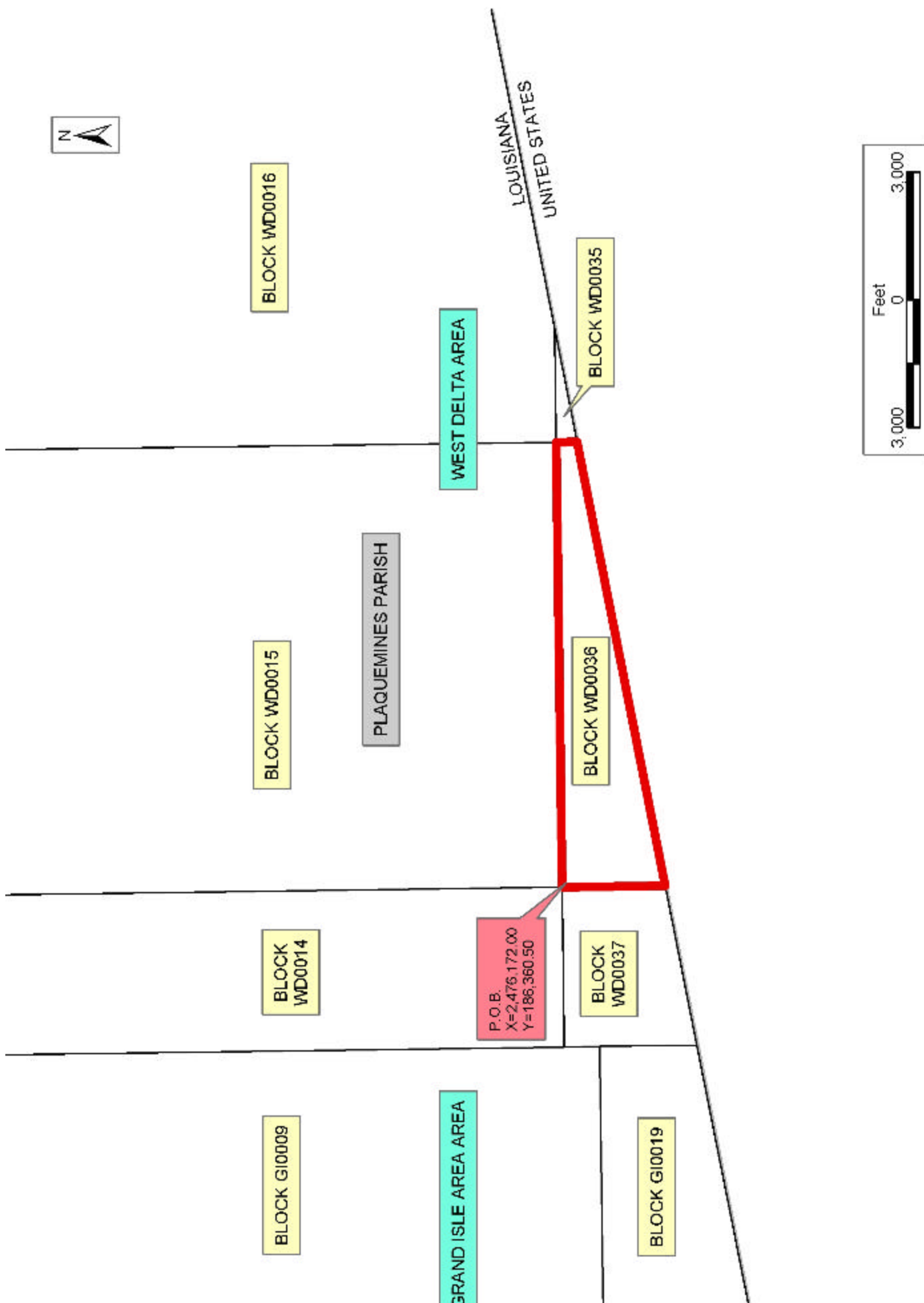
NOTE: The above description of the Tract nominated for lease has been provided and corrected, where required, exclusively by the nomination party. Any mineral lease selected from this Tract and awarded by the Louisiana State Mineral Board shall be without warranty of any kind, either express, implied, or statutory, including, but not limited to, the implied warranties of merchantability and fitness for a particular purpose. Should the mineral lease awarded by the Louisiana State Mineral Board be subsequently modified, cancelled or abrogated due to the existence of conflicting leases, operating agreements, private claims or other future obligations or conditions which may affect all or any portion of the leased Tract, it shall not relieve the Lessee of the obligation to pay any bonus due thereon to the Louisiana State Mineral Board, nor shall the Louisiana State Mineral Board be obligated to refund any consideration paid by the Lessor prior to such modification, cancellation, or abrogation, including, but not limited to, bonuses, rentals and royalties.

NOTE: The State of Louisiana does hereby reserve, and this lease shall be subject to, the imprescriptible right of surface use in the nature of a servitude in favor of the Department of Natural Resources, including its Offices and Commissions, for the sole purpose of implementing, constructing, servicing and maintaining approved coastal zone management and/or restoration projects. Utilization of any and all rights derived

under this lease by the mineral lessee, its agents, successors or assigns, shall not interfere with nor hinder the reasonable surface use by the Department of Natural Resources, its Offices or Commissions, as herein above reserved.

Applicant: Erin Bila

Bidder	Cash Payment	Price/ Acre	Rental	Oil	Gas	Other



TRACT 35603 - Portion of Block 25, West Delta Area, Plaquemines Parish, Louisiana

The beds and bottoms of all water bodies belonging to the State of Louisiana located in that portion of Block 25, West Delta Area, together with any present lands formed by accretion to the shoreline, located in Plaquemines Parish, Louisiana, and not presently under mineral lease on September 10, 2003, the geographical area of which is more fully described as follows: Beginning at a point on the line being the Western boundary of Block 25, West Delta Area and the Northwest corner of said Block 25 having Coordinates of X = 2,591,122.00 and Y = 180,603.33; thence South 63 degrees 27 minutes 31 seconds East 9,060.02 feet to a point having Coordinates of X = 2,599,227.20 and Y = 176,554.90; thence West 49.34 feet to a point on the North line of State Lease No. A00258 having Coordinates of X = 2,599,177.86 and Y = 176,554.90; thence West 2,305.00 feet on the said North line of State Lease No. A00258 to a point being the Northwest corner of said State Lease No. A00258 having Coordinates of X = 2,596,872.86 and Y = 176,554.90; thence South 00 degrees 01 minutes 10 seconds West 2,551.57 feet along the West line of State Lease No. A00258 to a point being the Southwest corner of State Lease No. A00258 and the Northwest corner of State Lease No. 10090 having Coordinates of X = 2,596,872.00 and Y = 174,003.33; thence South 8,484.93 feet along the West line of said State Lease No. 10090 to a point being the Southwest corner of said State Lease No. 10090 having Coordinates of X = 2,596,872.00 and Y = 165,518.40; thence West 1,806.41 feet to a point having Coordinates of X = 2,595,065.59 and Y = 165,518.40; thence Northwesterly on an arc having a radius of 18,240.60 feet and a center at X = 2,607,710 feet and Y = 178,665 feet to a point having Coordinates of X = 2,594,008.00 feet and Y = 166,625.00 feet; thence North 41 degrees 18 minutes 19 seconds West 2,030.08 feet to a point having Coordinates of X = 2,592,668.00 and Y = 168,150.00; thence Northwesterly on an arc having a radius of 18,240.60 feet and a center at X = 2,606,370 and Y = 180,190 to a point having Coordinates of X = 2,591,122.00 and Y = 170,179.11; thence North 10,424.22 feet to the point of beginning, **LESS AND EXCEPT**, all that portion of State Lease 192, as amended, that may lie within the above described tract containing approximately **1,635.29 acres**, all as more particularly outlined on a plat on file in the Office of Mineral Resources, Department of Natural Resources. All bearings, distances and coordinates are based on Louisiana Coordinate System of 1927, (North or South Zone).

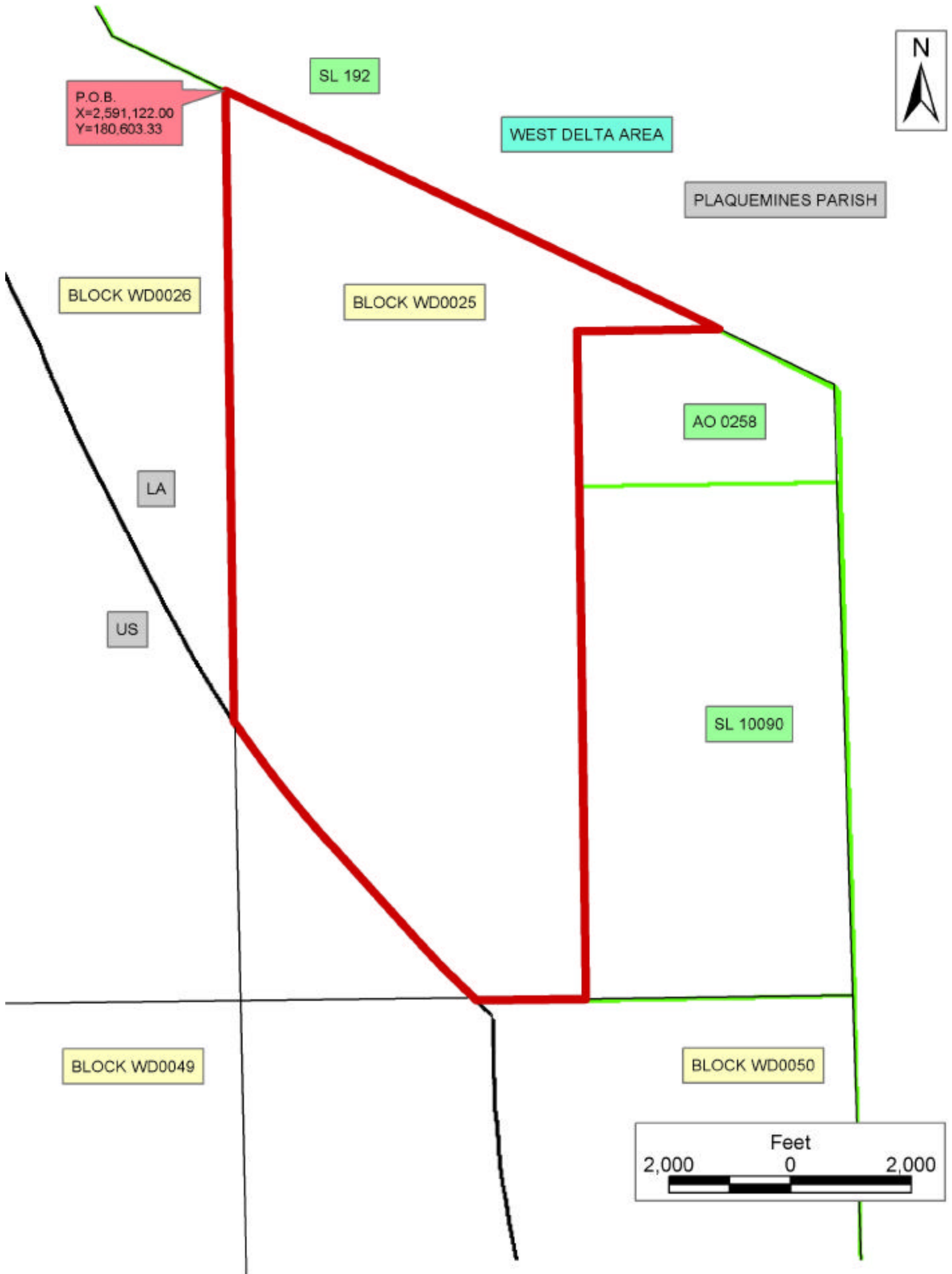
NOTE: The above description of the Tract nominated for lease has been provided and corrected, where required, exclusively by the nomination party. Any mineral lease selected from this Tract and awarded by the Louisiana State Mineral Board shall be without warranty of any kind, either express, implied, or statutory, including, but not limited to, the implied warranties of merchantability and fitness for a particular purpose. Should the mineral lease awarded by the Louisiana State Mineral Board be subsequently modified, cancelled or abrogated due to the existence of conflicting leases, operating agreements, private claims or other future obligations or conditions which may affect all or any portion

of the leased Tract, it shall not relieve the Lessee of the obligation to pay any bonus due thereon to the Louisiana State Mineral Board, nor shall the Louisiana State Mineral Board be obligated to refund any consideration paid by the Lessor prior to such modification, cancellation, or abrogation, including, but not limited to, bonuses, rentals and royalties.

NOTE: The State of Louisiana does hereby reserve, and this lease shall be subject to, the imprescriptible right of surface use in the nature of a servitude in favor of the Department of Natural Resources, including its Offices and Commissions, for the sole purpose of implementing, constructing, servicing and maintaining approved coastal zone management and/or restoration projects. Utilization of any and all rights derived under this lease by the mineral lessee, its agents, successors or assigns, shall not interfere with nor hinder the reasonable surface use by the Department of Natural Resources, its Offices or Commissions, as herein above reserved.

Applicant: S.R. Verret

Bidder	Cash Payment	Price/ Acre	Rental	Oil	Gas	Other



TRACT 35604 - Portion of Blocks 50, and 51, West Delta Area, Plaquemines Parish, Louisiana

The beds and bottoms of all water bodies belonging to the State of Louisiana located in that portion of Blocks 50, and 51, West Delta Area, together with any present lands formed by accretion to the shoreline, located in Plaquemines Parish, Louisiana, and not presently under mineral lease on September 10, 2003, the geographical area of which is more fully described as follows: Beginning at a point on the line being the Eastern boundary of Block 50, West Delta Area and the Northeast corner of said Block 50 having Coordinates of X = 2,601,276.75 and Y = 165,518.40; thence South 00 degrees 58 minutes 37 seconds East 5,628.53 feet along the said East line of Block 50 to a point having Coordinates of X = 2,601,372.72 and Y = 159,890.69; thence South 29 degrees 19 minutes 32 seconds East 406.88 feet to a point being the Northwest corner of Block 51 having Coordinates of X = 2,601,572.00 and Y = 159,535.95; thence South 29 degrees 19 minutes 32 seconds East 5,760.97 feet along the North line of said Block 51 to a point having Coordinates of X = 2,604,393.57 and Y = 154,513.25; thence North 89 degrees 03 minutes 12 seconds East 6,064.73 feet along the North line of said Block 51 to a point having Coordinates of X = 2,610,457.47 and Y = 154,613.44; thence South 3,337.08 feet to a point having Coordinates of X = 2,610,457.47 and Y = 151,276.36; thence West 8,885.47 feet to a point being on the West line of said Block 51 and the East line of said Block 50 having Coordinates of X = 2,601,572.00 and Y = 151,276.36; thence West 4,359.26 feet to a point having Coordinates of X = 2,597,212.74 and Y = 151,276.36; thence North 00 degrees 02 minutes 02 seconds West 4,622.64 feet to a point having Coordinates of X = 2,597,210.00 and Y = 155,899.00; thence Northwesterly on an arc having a radius of 18,240.60 feet and a center at X = 2,614,790 and Y = 160,765 to a point having Coordinates of X = 2,596,949.00 and Y = 156,969.00 thence North 19 degrees 22 minutes 33 seconds West 1,829.62 feet to a point having Coordinates of X = 2,596,342.00 and Y = 158,695.00; thence Northwesterly on an arc having a radius of 18,240.60 feet and a center at X = 2,613,550 and Y = 164,745 to a point having Coordinates of X = 2,595,312.00 and Y = 165,072.00 thence North 01 degrees 05 minutes 28 seconds East 210.04 feet to a point having Coordinates of X = 2,595,316.00 and Y = 165,282.00; thence Northwesterly on an arc having a radius of 18,240.60 feet and a center at X = 2,607,710 and Y = 178,665 to a point having Coordinates of X = 2,595,065.59 and Y = 165,518.40 thence East 1,806.41 feet to a point having Coordinates of X = 2,596,872.00 and Y = 165,518.40; thence East 4,404.75 feet to the point of beginning, containing approximately **2,500.00 acres**, all as more particularly outlined on a plat on file in the Office of Mineral Resources, Department of Natural Resources. All bearings, distances and coordinates are based on Louisiana Coordinate System of 1927, (North or South Zone).

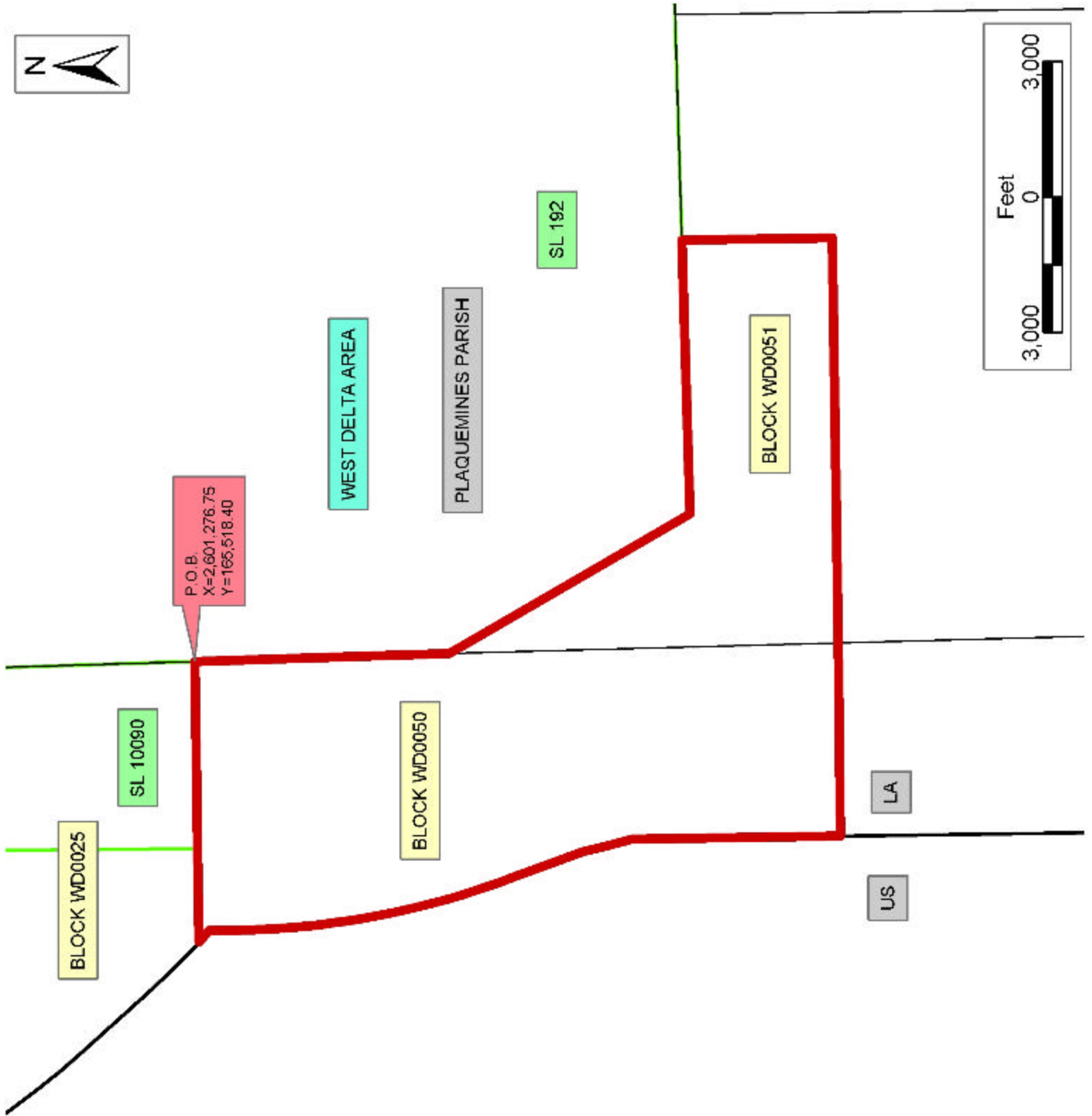
NOTE: The above description of the Tract nominated for lease has been provided and corrected, where required, exclusively by the nomination party. Any mineral lease selected from this Tract and awarded by the Louisiana State Mineral Board shall be without warranty of any kind,

either express, implied, or statutory, including, but not limited to, the implied warranties of merchantability and fitness for a particular purpose. Should the mineral lease awarded by the Louisiana State Mineral Board be subsequently modified, cancelled or abrogated due to the existence of conflicting leases, operating agreements, private claims or other future obligations or conditions which may affect all or any portion of the leased Tract, it shall not relieve the Lessee of the obligation to pay any bonus due thereon to the Louisiana State Mineral Board, nor shall the Louisiana State Mineral Board be obligated to refund any consideration paid by the Lessor prior to such modification, cancellation, or abrogation, including, but not limited to, bonuses, rentals and royalties.

NOTE: The State of Louisiana does hereby reserve, and this lease shall be subject to, the imprescriptible right of surface use in the nature of a servitude in favor of the Department of Natural Resources, including its Offices and Commissions, for the sole purpose of implementing, constructing, servicing and maintaining approved coastal zone management and/or restoration projects. Utilization of any and all rights derived under this lease by the mineral lessee, its agents, successors or assigns, shall not interfere with nor hinder the reasonable surface use by the Department of Natural Resources, its Offices or Commissions, as herein above reserved.

Applicant: S.R. Verret

Bidder	Cash Payment	Price/ Acre	Rental	Oil	Gas	Other



TRACT 35605 - Portion of Block 21, South Timbalier Area, Revised, Lafourche Parish, Louisiana

The beds and bottoms of all water bodies belonging to the State of Louisiana located in that portion of Block 21, South Timbalier Area, Revised, together with any present lands formed by accretion to the shoreline, located in Lafourche Parish, Louisiana, and not presently under mineral lease on September 10, 2003, the geographical area of which is more fully described as follows: Beginning at a point on the North line of Block 21, South Timbalier Area, Revised, having Coordinates of X = 2,337,745.62 and Y = 134,330.00; thence East 10,457.00 feet to a point having Coordinates of X = 2,348,202.62 and Y = 134,330.00; thence Southwesterly along a straight line to a point having Coordinates of X = 2,346,096 and Y = 133,534; thence Southwesterly along an arc having a radius of 18,240.60 feet and a center at X = 2,339,651 and Y = 150,598 to a point having Coordinates of X = 2,344,530 and Y = 133,022; thence Southwesterly along a straight line to a point on the North line of State Lease No. 1423, as amended, having Coordinates of X = 2,343,477.01 and Y = 132,730.00; thence along the North line of said State Lease No. 1423 the following courses: West 2,732.01 feet to a point having Coordinates of X = 2,340,745.00 and Y = 132,730.00, North 670.00 feet to a point having Coordinates of X = 2,340,745.00 and Y = 133,400.00, West 1,888.45 feet to a point having Coordinates of X = 2,338,856.55 and Y = 133,400.00, South 1,920.71 feet to a point having Coordinates of X = 2,338,856.55 and Y = 131,479.29, and West 4,244.37 feet to its Northwest corner having Coordinates of X = 2,334,612.18 and Y = 131,479.29, said point also located on the West line of said Block 21; thence North 1,608.21 feet along the West line of said Block 21 to a point having Coordinates of X = 2,334,612.18 and Y = 133,087.50; thence North 68 degrees 22 minutes 14 seconds East 3,370.79 feet to the point of beginning, containing approximately **466.43 acres, LESS AND EXCEPT** that portion thereof, if any, lying seaward of the line three nautical miles from the coast line of Louisiana, as said three mile line has been decreed by the Supreme Court of the United States, as determined by a Special Master appointed therein, in litigation styled **United States v. State of Louisiana et al No. 9 Original**, in 1975, all as more particularly outlined on a plat in the Office of Mineral Resources, Department of Natural Resources. All bearings, distances and coordinates are based on the Louisiana Coordinate System of 1927, (South Zone).

NOTE: The above description of the Tract nominated for lease has been provided and corrected, where required, exclusively by the nomination party. Any mineral lease selected from this Tract and awarded by the Louisiana State Mineral Board shall be without warranty of any kind, either express, implied, or statutory, including, but not limited to, the implied warranties of merchantability and fitness for a particular purpose. Should the mineral lease awarded by the Louisiana State Mineral Board be subsequently modified, cancelled or abrogated due to the existence of conflicting leases, operating agreements, private claims or other future obligations or conditions which may affect all or any portion

of the leased Tract, it shall not relieve the Lessee of the obligation to pay any bonus due thereon to the Louisiana State Mineral Board, nor shall the Louisiana State Mineral Board be obligated to refund any consideration paid by the Lessor prior to such modification, cancellation, or abrogation, including, but not limited to, bonuses, rentals and royalties.

NOTE: The State of Louisiana does hereby reserve, and this lease shall be subject to, the imprescriptible right of surface use in the nature of a servitude in favor of the Department of Natural Resources, including its Offices and Commissions, for the sole purpose of implementing, constructing, servicing and maintaining approved coastal zone management and/or restoration projects. Utilization of any and all rights derived under this lease by the mineral lessee, its agents, successors or assigns, shall not interfere with nor hinder the reasonable surface use by the Department of Natural Resources, its Offices or Commissions, as herein above reserved.

NOTE: It appears, according to our records, that a portion of this Tract is located within the restrictive safety fairway area as set out by the Corps of Engineers, U.S. Army and/or the restrictive anchorage area as set out by the U.S. Coast Guard.

Applicant: J.M. Huber Corporation

Bidder	Cash Payment	Price/ Acre	Rental	Oil	Gas	Other



BLOCK BM0005

GULF OF MEXICO



BAY MARCHAND AREA

BLOCK ST0021

S.L. 1423

LAFOURCHE PARISH

SOUTH TIMBALIER
AREA, REVISED

P.O.B.
X=2,337,745.75
Y=134,330.00

BLOCK BM0007

BLOCK ST0020

LOUISIANA
UNITED STATES