

TRACT 35590 - Portion of Blocks 5, and 6, West Delta Area, Plaquemines Parish, Louisiana

All of the lands now or formerly constituting the beds and bottoms of all water bodies of every nature and description the title of which vests in the State of Louisiana, together with all islands arising therein and other lands formed by accretion or by reliction, where allowed by law, excepting tax adjudicated lands, and not presently under mineral lease on September 10, 2003, situated in Plaquemines Parish, Louisiana, and more particularly described as follows: Beginning at a point on the Louisiana coastline within Block 5, West Delta Area, having Coordinates of X = 2,554,547.00 and Y = 215,601.26; thence along the said Louisiana coastline the following courses: Northwesterly on a straight line to a point having Coordinates of X = 2,550,402 and Y = 216,158; Southwesterly on a straight line to an intersection point on the West boundary of said Block 5, having Coordinates of X = 2,549,322.00 and Y = 215,959.14; Southwesterly on a straight line to an intersection point on the West boundary of Block 6, having Coordinates of X = 2,538,872.00 and Y = 214,034.97; thence North 8,215.97 feet along the said West boundary of Block 6 to a point having Coordinates of X = 2,538,872.00 and Y = 222,250.94; thence East 15,675.00 feet to a point having Coordinates of X = 2,554,547.00 and Y = 222,250.94; thence South 6,649.68 feet to the point of beginning, containing approximately **1,970 acres**, all as more particularly outlined on a plat on file in the Office of Mineral Resources, Department of Natural Resources. All bearings, distances and coordinates are based on Louisiana Coordinate System of 1927, (North or South Zone), where applicable.

NOTE: The above description of the Tract nominated for lease has been provided and corrected, where required, exclusively by the nomination party. Any mineral lease selected from this Tract and awarded by the Louisiana State Mineral Board shall be without warranty of any kind, either express, implied, or statutory, including, but not limited to, the implied warranties of merchantability and fitness for a particular purpose. Should the mineral lease awarded by the Louisiana State Mineral Board be subsequently modified, cancelled or abrogated due to the existence of conflicting leases, operating agreements, private claims or other future obligations or conditions which may affect all or any portion of the leased Tract, it shall not relieve the Lessee of the obligation to pay any bonus due thereon to the Louisiana State Mineral Board, nor shall the Louisiana State Mineral Board be obligated to refund any consideration paid by the Lessor prior to such modification, cancellation, or abrogation, including, but not limited to, bonuses, rentals and royalties.

NOTE: The State of Louisiana does hereby reserve, and this lease shall be subject to, the imprescriptible right of surface use in the nature of a servitude in favor of the Department of Natural Resources, including its Offices and Commissions, for the sole purpose of implementing, constructing, servicing and maintaining approved coastal zone management and/or restoration projects. Utilization of any and all rights derived under this lease by the mineral lessee, its agents, successors or assigns,

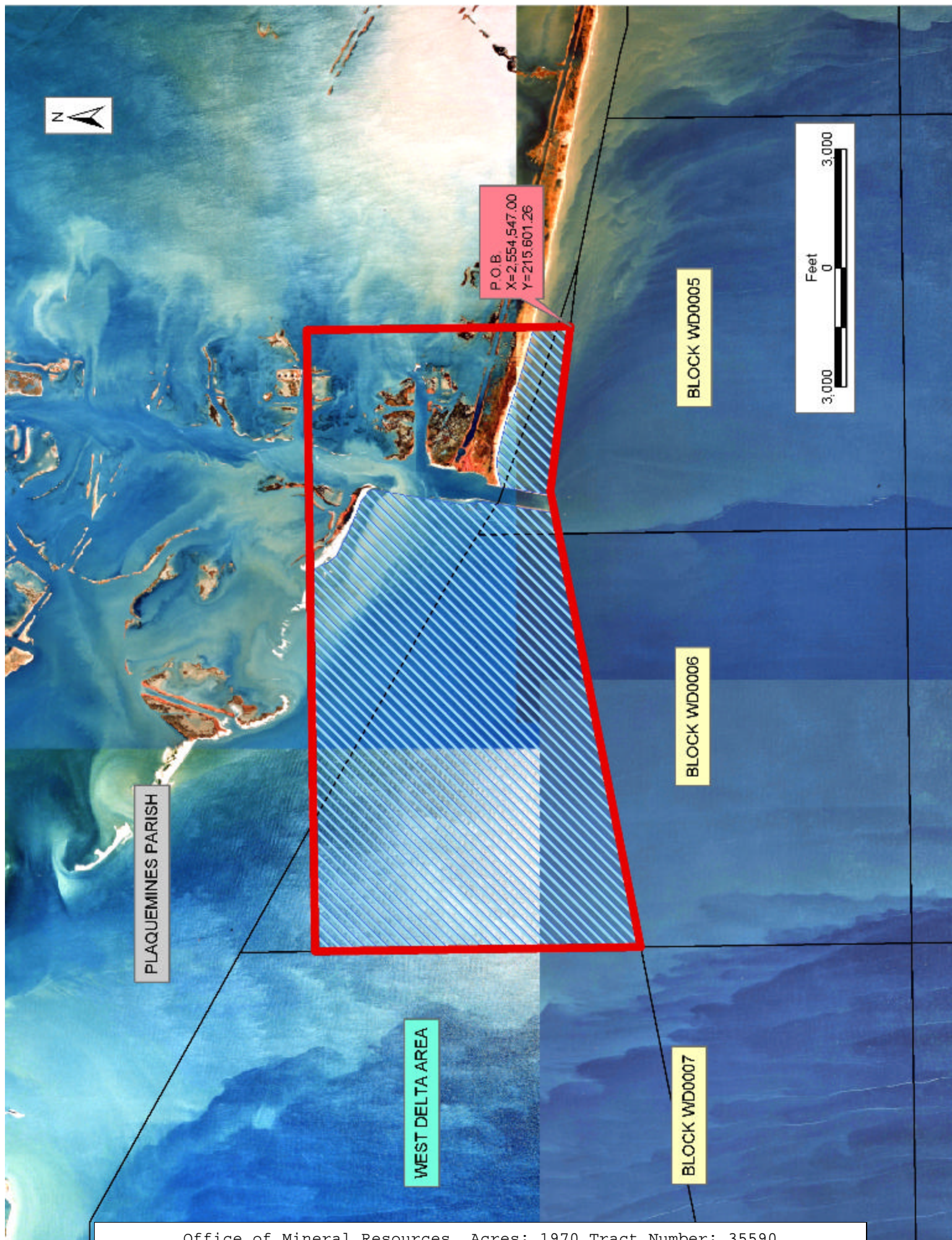
shall not interfere with nor hinder the reasonable surface use by the Department of Natural Resources, its Offices or Commissions, as herein above reserved.

NOTE: It appears, according to our records, that a portion of this Tract is located within the restrictive safety fairway area as set out by the Corps of Engineers, U.S. Army and/or the restrictive anchorage area as set out by the U.S. Coast Guard.

NOTE: The Department of Wildlife and Fisheries has designated certain areas in the coastal waters of the State of Louisiana as Oyster Seed Bed Areas. The exact location of those Seed Bed Areas must be obtained from the Department of Wildlife and Fisheries and any work done under a mineral lease from the State of Louisiana may necessarily be conducted in conformity with the rules and regulations promulgated by the said Department of Wildlife and Fisheries for Oyster Seed Bed Areas.

Applicant: S.R. Verret

Bidder	Cash Payment	Price/ Acre	Rental	Oil	Gas	Other



TRACT 35591 - Portion of Block 6, West Delta Area, Plaquemines Parish, Louisiana

The beds and bottoms of all water bodies belonging to the State of Louisiana located in that portion of Block 6, West Delta Area, together with any present lands formed by accretion to the shoreline, located in Plaquemines Parish, Louisiana, and not presently under mineral lease on September 10, 2003, the geographical area of which is more fully described as follows: Beginning at the Southwest corner of Block 6, West Delta Area, having Coordinates of X = 2,538,872.00 and Y = 207,202.60; thence North 6,832.37 feet along the West boundary of said Block 6 to an intersection point on the Louisiana coastline having Coordinates of X = 2,538,872.00 and Y = 214,034.97; thence Northeasterly in a straight line along the said Louisiana coastline to an intersection point on the East boundary of said Block 6 having Coordinates of X = 2,549,322.00 and Y = 215,959.14; thence South 8,756.54 feet along the said East boundary of Block 6 to its Southeast corner having Coordinates of X = 2,549,322.00 and Y = 207,202.60; thence West 10,450.00 feet along the South boundary of said Block 6 to the point of beginning, containing approximately **1,869.88 acres**, all as more particularly outlined on a plat on file in the Office of Mineral Resources, Department of Natural Resources. All bearings, distances and coordinates are based on Louisiana Coordinate System of 1927, (North or South Zone).

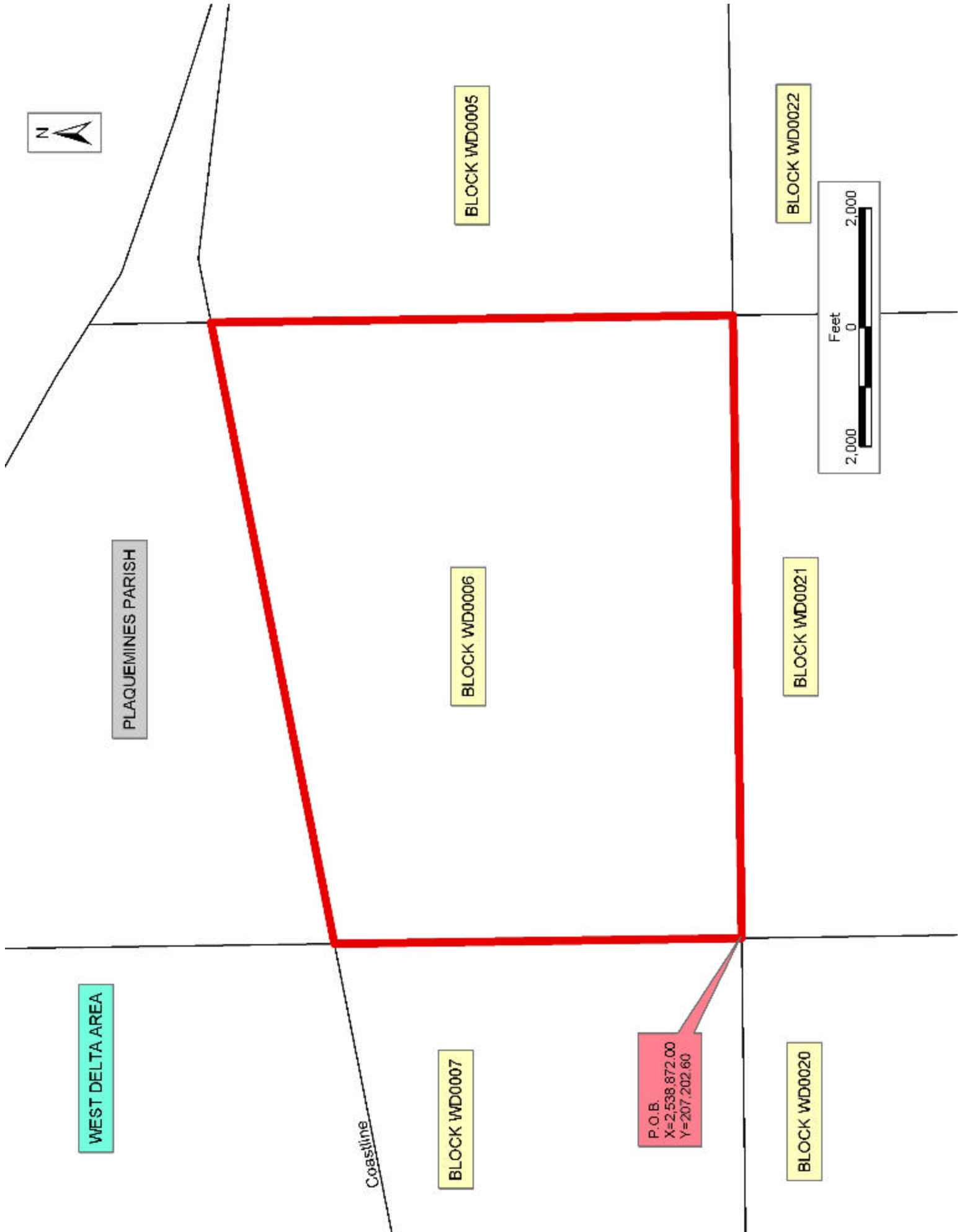
NOTE: The above description of the Tract nominated for lease has been provided and corrected, where required, exclusively by the nomination party. Any mineral lease selected from this Tract and awarded by the Louisiana State Mineral Board shall be without warranty of any kind, either express, implied, or statutory, including, but not limited to, the implied warranties of merchantability and fitness for a particular purpose. Should the mineral lease awarded by the Louisiana State Mineral Board be subsequently modified, cancelled or abrogated due to the existence of conflicting leases, operating agreements, private claims or other future obligations or conditions which may affect all or any portion of the leased Tract, it shall not relieve the Lessee of the obligation to pay any bonus due thereon to the Louisiana State Mineral Board, nor shall the Louisiana State Mineral Board be obligated to refund any consideration paid by the Lessor prior to such modification, cancellation, or abrogation, including, but not limited to, bonuses, rentals and royalties.

NOTE: The State of Louisiana does hereby reserve, and this lease shall be subject to, the imprescriptible right of surface use in the nature of a servitude in favor of the Department of Natural Resources, including its Offices and Commissions, for the sole purpose of implementing, constructing, servicing and maintaining approved coastal zone management and/or restoration projects. Utilization of any and all rights derived under this lease by the mineral lessee, its agents, successors or assigns, shall not interfere with nor hinder the reasonable surface use by the Department of Natural Resources, its Offices or Commissions, as herein above reserved.

NOTE: It appears, according to our records, that a portion of this Tract is located within the restrictive safety fairway area as set out by the Corps of Engineers, U.S. Army and/or the restrictive anchorage area as set out by the U.S. Coast Guard.

Applicant: S.R. Verret

Bidder	Cash Payment	Price/ Acre	Rental	Oil	Gas	Other



TRACT 35592 - Portion of Block 5, West Delta Area, Plaquemines Parish, Louisiana

The beds and bottoms of all water bodies belonging to the State of Louisiana located in that portion of Block 5, West Delta Area, together with any present lands formed by accretion to the shoreline, located in Plaquemines Parish, Louisiana, and not presently under mineral lease on September 10, 2003, the geographical area of which is more fully described as follows: Beginning at the Southwest corner of Block 5, West Delta Area, having Coordinates of X = 2,549,322.00 and Y = 207,202.60; thence North 8,756.54 feet along the West boundary of said Block 5 to an intersection point on the Louisiana coastline having Coordinates of X = 2,549,322.00 and Y = 215,959.14; thence along the said Louisiana coastline the following courses: Northeasterly on a straight line to a point having Coordinates of X = 2,550,402 and Y = 216,158; Southeasterly on a straight line to a point having Coordinates of X = 2,556,172 and Y = 215,383; Southeasterly on a straight line to a point having Coordinates of X = 2,559,722.00 and Y = 214,606.10; East on a straight line to the Northeast corner of said Block 5 having Coordinates of X = 2,559,772.00 and Y = 214,606.10; thence South 7,403.50 feet along the East boundary of said Block 5 to its Southeast corner having Coordinates of X = 2,559,772.00 and Y = 207,202.60; thence West 10,450.00 feet along the South boundary of said Block 5 to the point of beginning, containing approximately **1,998.00 acres**, all as more particularly outlined on a plat on file in the Office of Mineral Resources, Department of Natural Resources. All bearings, distances and coordinates are based on Louisiana Coordinate System of 1927, (North or South Zone).

NOTE: The above description of the Tract nominated for lease has been provided and corrected, where required, exclusively by the nomination party. Any mineral lease selected from this Tract and awarded by the Louisiana State Mineral Board shall be without warranty of any kind, either express, implied, or statutory, including, but not limited to, the implied warranties of merchantability and fitness for a particular purpose. Should the mineral lease awarded by the Louisiana State Mineral Board be subsequently modified, cancelled or abrogated due to the existence of conflicting leases, operating agreements, private claims or other future obligations or conditions which may affect all or any portion of the leased Tract, it shall not relieve the Lessee of the obligation to pay any bonus due thereon to the Louisiana State Mineral Board, nor shall the Louisiana State Mineral Board be obligated to refund any consideration paid by the Lessor prior to such modification, cancellation, or abrogation, including, but not limited to, bonuses, rentals and royalties.

NOTE: The State of Louisiana does hereby reserve, and this lease shall be subject to, the imprescriptible right of surface use in the nature of a servitude in favor of the Department of Natural Resources, including its Offices and Commissions, for the sole purpose of implementing, constructing, servicing and maintaining approved coastal zone management and/or restoration projects. Utilization of any and all rights derived

under this lease by the mineral lessee, its agents, successors or assigns, shall not interfere with nor hinder the reasonable surface use by the Department of Natural Resources, its Offices or Commissions, as herein above reserved.

NOTE: It appears, according to our records, that a portion of this Tract is located within the restrictive safety fairway area as set out by the Corps of Engineers, U.S. Army and/or the restrictive anchorage area as set out by the U.S. Coast Guard.

NOTE: The Department of Wildlife and Fisheries has designated certain areas in the coastal waters of the State of Louisiana as Oyster Seed Bed Areas. The exact location of those Seed Bed Areas must be obtained from the Department of Wildlife and Fisheries and any work done under a mineral lease from the State of Louisiana may necessarily be conducted in conformity with the rules and regulations promulgated by the said Department of Wildlife and Fisheries for Oyster Seed Bed Areas.

Applicant: S.R. Verret

Bidder	Cash Payment	Price/ Acre	Rental	Oil	Gas	Other



PLAQUEMINES PARISH

Coastline

BLOCK
WD0006

BLOCK WD0005

BLOCK
WD0004

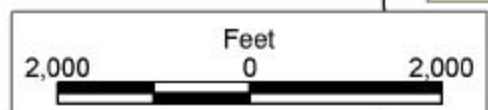
P.O.B.
X=2,549,322.00
Y=207,202.60

WEST DELTA AREA

BLOCK
WD0021

BLOCK WD0022

BLOCK
WD0023



TRACT 35593 - Portion of Block 7, West Delta Area, Plaquemines Parish, Louisiana

The beds and bottoms of all water bodies belonging to the State of Louisiana located in that portion of Block 7, West Delta Area, together with any present lands formed by accretion to the shoreline, located in Plaquemines Parish, Louisiana, and not presently under mineral lease on September 10, 2003, the geographical area of which is more fully described as follows: Beginning at the Southeast corner of Block 7, West Delta Area, having Coordinates of X = 2,538,872.00 and Y = 207,202.60; thence West 5,225.10 feet along the South boundary of said Block 7 to a point having Coordinates of X = 2,533,646.90 and Y = 207,202.60; thence North 5,870.27 feet to an intersection point on the Louisiana coastline having Coordinates of X = 2,533,646.90 and Y = 213,072.87; thence Northeasterly in a straight line along the said Louisiana coastline to an intersection point on the East boundary of said Block 7 having Coordinates of X = 2,538,872.00 and Y = 214,034.97; thence South 6,832.37 feet to the point of beginning, containing approximately **761.85 acres**, , all as more particularly outlined on a plat on file in the Office of Mineral Resources, Department of Natural Resources. All bearings, distances and coordinates are based on Louisiana Coordinate System of 1927, (North or South Zone).

NOTE: The above description of the Tract nominated for lease has been provided and corrected, where required, exclusively by the nomination party. Any mineral lease selected from this Tract and awarded by the Louisiana State Mineral Board shall be without warranty of any kind, either express, implied, or statutory, including, but not limited to, the implied warranties of merchantability and fitness for a particular purpose. Should the mineral lease awarded by the Louisiana State Mineral Board be subsequently modified, cancelled or abrogated due to the existence of conflicting leases, operating agreements, private claims or other future obligations or conditions which may affect all or any portion of the leased Tract, it shall not relieve the Lessee of the obligation to pay any bonus due thereon to the Louisiana State Mineral Board, nor shall the Louisiana State Mineral Board be obligated to refund any consideration paid by the Lessor prior to such modification, cancellation, or abrogation, including, but not limited to, bonuses, rentals and royalties.

NOTE: The State of Louisiana does hereby reserve, and this lease shall be subject to, the imprescriptible right of surface use in the nature of a servitude in favor of the Department of Natural Resources, including its Offices and Commissions, for the sole purpose of implementing, constructing, servicing and maintaining approved coastal zone management and/or restoration projects. Utilization of any and all rights derived under this lease by the mineral lessee, its agents, successors or assigns, shall not interfere with nor hinder the reasonable surface use by the Department of Natural Resources, its Offices or Commissions, as herein above reserved.

NOTE: It appears, according to our records, that a portion of this Tract is located within the restrictive safety fairway area as set out by the Corps of Engineers, U.S. Army and/or the restrictive anchorage area as set out by the U.S. Coast Guard.

Applicant: S.R. Verret

Bidder	Cash Payment	Price/ Acre	Rental	Oil	Gas	Other



BLOCK WD0007

BLOCK WD0006

WEST DELTA AREA

Coastline

BLOCK WD0006

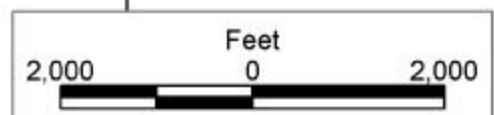
BLOCK WD0007

P.O.B.
X=2,538,872.00
Y=207,202.60

PLAQUEMINES PARISH

BLOCK WD0020

BLOCK WD0021



TRACT 35594 - Portion of Block 21, West Delta Area, Plaquemines Parish, Louisiana

The beds and bottoms of all water bodies belonging to the State of Louisiana located in that portion of Block 21, West Delta Area, together with any present lands formed by accretion to the shoreline, located in Plaquemines Parish, Louisiana, and not presently under mineral lease on September 10, 2003, the geographical area of which is more fully described as follows: Beginning at the Northwest corner of Block 21, West Delta Area, having Coordinates of X = 2,538,872.00 and Y = 207,202.60; thence East 4,991.71 feet along the North boundary of said Block 21 to a point having Coordinates of X = 2,543,863.71 and Y = 207,202.60; thence South 10,795.47 feet to an intersection point on the three mile line having Coordinates of X = 2,543,863.71 and Y = 196,407.13; thence Southwesterly on a straight line along the said three mile line to an intersection point on the West boundary of said Block 21 having Coordinates of X = 2,538,872.00 and Y = 195,487.99; thence North 11,714.61 feet along the said West boundary of Block 21 to the point of beginning, containing approximately **1,289.76 acres, LESS AND EXCEPT** that portion thereof, if any, lying seaward of the line three nautical miles from the coast line of Louisiana, as said three mile line has been decreed by the Supreme Court of the United States, as determined by a Special Master appointed therein, in litigation styled **United States v. State of Louisiana et al No. 9 Original**, in 1975, all as more particularly outlined on a plat in the Office of Mineral Resources, Department of Natural Resources. All bearings, distances and coordinates are based on the Louisiana Coordinate System of 1927, (South Zone).

NOTE: The above description of the Tract nominated for lease has been provided and corrected, where required, exclusively by the nomination party. Any mineral lease selected from this Tract and awarded by the Louisiana State Mineral Board shall be without warranty of any kind, either express, implied, or statutory, including, but not limited to, the implied warranties of merchantability and fitness for a particular purpose. Should the mineral lease awarded by the Louisiana State Mineral Board be subsequently modified, cancelled or abrogated due to the existence of conflicting leases, operating agreements, private claims or other future obligations or conditions which may affect all or any portion of the leased Tract, it shall not relieve the Lessee of the obligation to pay any bonus due thereon to the Louisiana State Mineral Board, nor shall the Louisiana State Mineral Board be obligated to refund any consideration paid by the Lessor prior to such modification, cancellation, or abrogation, including, but not limited to, bonuses, rentals and royalties.

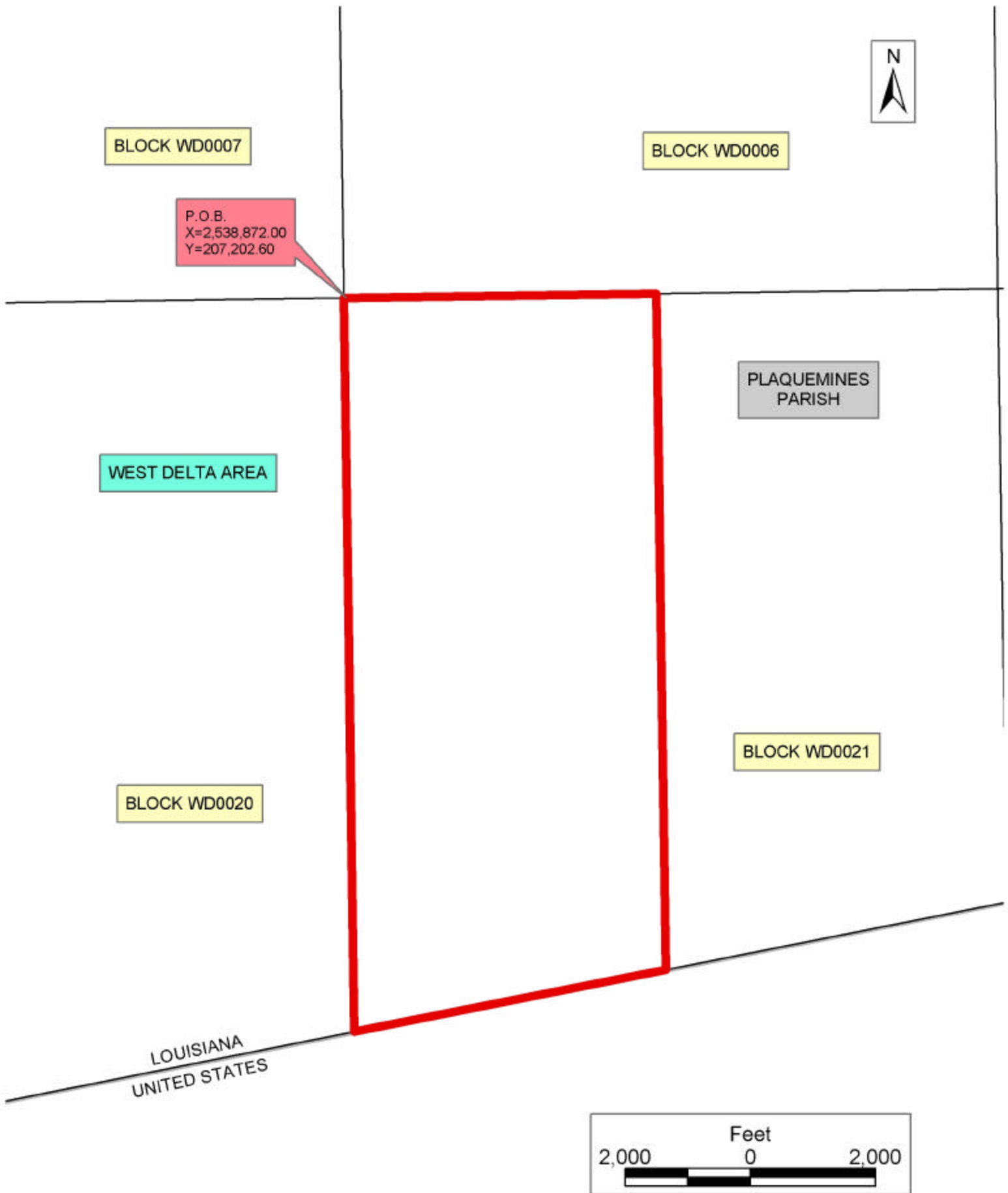
NOTE: The State of Louisiana does hereby reserve, and this lease shall be subject to, the imprescriptible right of surface use in the nature of a servitude in favor of the Department of Natural Resources, including its Offices and Commissions, for the sole purpose of implementing, constructing, servicing and maintaining approved coastal zone management and/or restoration projects. Utilization of any and all rights derived

under this lease by the mineral lessee, its agents, successors or assigns, shall not interfere with nor hinder the reasonable surface use by the Department of Natural Resources, its Offices or Commissions, as herein above reserved.

NOTE: It appears, according to our records, that a portion of this Tract is located within the restrictive safety fairway area as set out by the Corps of Engineers, U.S. Army and/or the restrictive anchorage area as set out by the U.S. Coast Guard.

Applicant: S.R. Verret

Bidder	Cash Payment	Price/ Acre	Rental	Oil	Gas	Other



TRACT 35595 - Portion of Block 21, West Delta Area, Plaquemines Parish, Louisiana

The beds and bottoms of all water bodies belonging to the State of Louisiana located in that portion of Block 21, West Delta Area, together with any present lands formed by accretion to the shoreline, located in Plaquemines Parish, Louisiana, and not presently under mineral lease on September 10, 2003, the geographical area of which is more fully described as follows: Beginning at the Northeast corner of Block 21, West Delta Area, having Coordinates of X = 2,549,322.00 and Y = 207,202.60; thence South 9,790.42 feet along the East boundary of said Block 21 to an intersection point on the three mile line having Coordinates of X = 2,549,322.00 and Y = 197,412.18; thence Southwesterly in a straight line along the said three mile line to a point having Coordinates of X = 2,543,863.71 and Y = 196,407.13; thence North 10,795.47 feet to an intersection point on the North boundary of said Block 21 having Coordinates of X = 2,543,863.71 and Y = 207,202.60; thence East 5,458.29 feet along the said North boundary of Block 21 to the point of beginning, containing approximately **1,289.76 acres, LESS AND EXCEPT** that portion thereof, if any, lying seaward of the line three nautical miles from the coast line of Louisiana, as said three mile line has been decreed by the Supreme Court of the United States, as determined by a Special Master appointed therein, in litigation styled **United States v. State of Louisiana et al No. 9 Original**, in 1975, all as more particularly outlined on a plat in the Office of Mineral Resources, Department of Natural Resources. All bearings, distances and coordinates are based on the Louisiana Coordinate System of 1927, (South Zone).

NOTE: The above description of the Tract nominated for lease has been provided and corrected, where required, exclusively by the nomination party. Any mineral lease selected from this Tract and awarded by the Louisiana State Mineral Board shall be without warranty of any kind, either express, implied, or statutory, including, but not limited to, the implied warranties of merchantability and fitness for a particular purpose. Should the mineral lease awarded by the Louisiana State Mineral Board be subsequently modified, cancelled or abrogated due to the existence of conflicting leases, operating agreements, private claims or other future obligations or conditions which may affect all or any portion of the leased Tract, it shall not relieve the Lessee of the obligation to pay any bonus due thereon to the Louisiana State Mineral Board, nor shall the Louisiana State Mineral Board be obligated to refund any consideration paid by the Lessor prior to such modification, cancellation, or abrogation, including, but not limited to, bonuses, rentals and royalties.

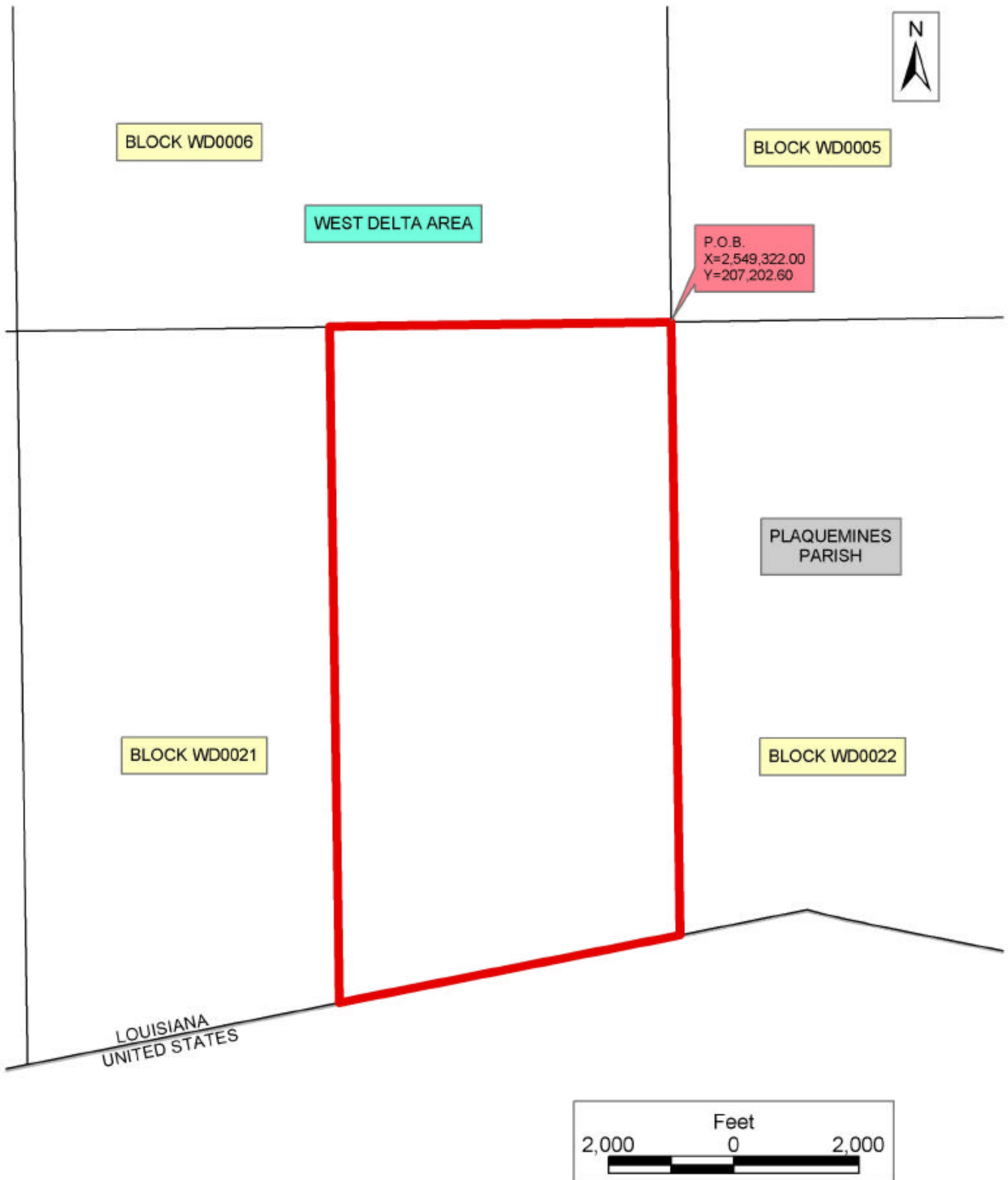
NOTE: The State of Louisiana does hereby reserve, and this lease shall be subject to, the imprescriptible right of surface use in the nature of a servitude in favor of the Department of Natural Resources, including its Offices and Commissions, for the sole purpose of implementing, constructing, servicing and maintaining approved coastal zone management and/or restoration projects. Utilization of any and all rights derived

under this lease by the mineral lessee, its agents, successors or assigns, shall not interfere with nor hinder the reasonable surface use by the Department of Natural Resources, its Offices or Commissions, as herein above reserved.

NOTE: It appears, according to our records, that a portion of this Tract is located within the restrictive safety fairway area as set out by the Corps of Engineers, U.S. Army and/or the restrictive anchorage area as set out by the U.S. Coast Guard.

Applicant: S.R. Verret

Bidder	Cash Payment	Price/ Acre	Rental	Oil	Gas	Other



TRACT 35596 - Portion of Block 22, West Delta Area, Plaquemines Parish, Louisiana

The beds and bottoms of all water bodies belonging to the State of Louisiana located in that portion of Block 22, West Delta Area, together with any present lands formed by accretion to the shoreline, located in Plaquemines Parish, Louisiana, and not presently under mineral lease on September 10, 2003, the geographical area of which is more fully described as follows: Beginning at the Northwest corner of Block 22, West Delta Area, having Coordinates of X = 2,549,322.00 and Y = 207,202.60; thence East 10,450.00 feet along the North boundary of said Block 22 to its Northeast corner having Coordinates of X = 2,559,772.00 and Y = 207,202.60; thence South 9,077.60 feet along the East boundary of said Block 22 to the most Northerly corner of State Lease No. 4242, as amended, having Coordinates of X = 2,559,772.00 and Y = 198,125.00; thence along the Western boundary of said State Lease No. 4242 the following courses: South 60 degrees 29 minutes 49 seconds West 1,116.82 feet to a point having Coordinates of X = 2,558,800.00 and Y = 197,575.00; South 47 degrees 24 minutes 36 seconds West 1,733.34 feet to a point on the three mile line having Coordinates of X = 2,557,523.89 and Y = 196,401.97; thence along the said three mile line the following courses: Northwesterly on an arc having a radius of 18,240.60 feet and a center at X = 2,562,149 and Y = 214,046 to a point having Coordinates of X = 2,557,272 and Y = 196,470; Northwesterly in a straight line to a point having Coordinates of X = 2,557,019 and Y = 196,540; Northwesterly in a straight line to a point having Coordinates of X = 2,552,324 and Y = 197,553; Northwesterly on an arc having a radius of 18,240.60 feet and a center at X = 2,556,172 and Y = 215,383 to a point having Coordinates of X = 2,551,363 and Y = 197,788; Southwesterly in a straight line to an intersection point on the West boundary of said Block 22 having Coordinates of X = 2,549,322.00 and Y = 197,412.18; thence North 9,790.42 feet along the said West boundary of Block 22 to the point of beginning, containing approximately **2,387.28 acres, LESS AND EXCEPT** that portion thereof, if any, lying seaward of the line three nautical miles from the coast line of Louisiana, as said three mile line has been decreed by the Supreme Court of the United States, as determined by a Special Master appointed therein, in litigation styled **United States v. State of Louisiana et al No. 9 Original**, in 1975, all as more particularly outlined on a plat in the Office of Mineral Resources, Department of Natural Resources. All bearings, distances and coordinates are based on the Louisiana Coordinate System of 1927, (South Zone).

NOTE: The above description of the Tract nominated for lease has been provided and corrected, where required, exclusively by the nomination party. Any mineral lease selected from this Tract and awarded by the Louisiana State Mineral Board shall be without warranty of any kind, either express, implied, or statutory, including, but not limited to, the implied warranties of merchantability and fitness for a particular purpose. Should the mineral lease awarded by the Louisiana State Mineral Board be subsequently modified, cancelled or abrogated due to the existence of conflicting leases, operating agreements, private claims or

other future obligations or conditions which may affect all or any portion of the leased Tract, it shall not relieve the Lessee of the obligation to pay any bonus due thereon to the Louisiana State Mineral Board, nor shall the Louisiana State Mineral Board be obligated to refund any consideration paid by the Lessor prior to such modification, cancellation, or abrogation, including, but not limited to, bonuses, rentals and royalties.

NOTE: The State of Louisiana does hereby reserve, and this lease shall be subject to, the imprescriptible right of surface use in the nature of a servitude in favor of the Department of Natural Resources, including its Offices and Commissions, for the sole purpose of implementing, constructing, servicing and maintaining approved coastal zone management and/or restoration projects. Utilization of any and all rights derived under this lease by the mineral lessee, its agents, successors or assigns, shall not interfere with nor hinder the reasonable surface use by the Department of Natural Resources, its Offices or Commissions, as herein above reserved.

NOTE: It appears, according to our records, that a portion of this Tract is located within the restrictive safety fairway area as set out by the Corps of Engineers, U.S. Army and/or the restrictive anchorage area as set out by the U.S. Coast Guard.

Applicant: S.R. Verret

Bidder	Cash Payment	Price/ Acre	Rental	Oil	Gas	Other



WEST DELTA AREA

SL 3978

BLOCK WD0023

BLOCK WD0005

BLOCK WD0022

SL 4242

P.O.B.
X=2,549,322.00
Y=207,202.60

PLAQUEMINES PARISH

BLOCK WD0021

LA

US



TRACT 35597 - Portion of Blocks 14, 15, and 16, West Delta Area, Plaquemines Parish, Louisiana

The beds and bottoms of all water bodies belonging to the State of Louisiana located in that portion of Blocks 14, 15, and 16, West Delta Area, together with any present lands formed by accretion to the shoreline, located in Plaquemines Parish, Louisiana, and not presently under mineral lease on September 10, 2003, the geographical area of which is more fully described as follows: Beginning at a Point having Coordinates of X = 2,487,505.81 and Y = 194,880.29; thence West 883.81 feet to a point on the Western boundary of Block 16, West Delta Area said boundary also being the Eastern boundary of Block 15, West Delta Area having Coordinates of X = 2,486,622.00 and Y = 194,880.29; thence West 10,450.00 feet to a point on the Western boundary of said Block 15, West Delta Area said boundary also being the Eastern boundary of Block 14, West Delta Area having Coordinates of X = 2,476,172.00 and Y = 194,880.29; thence West 1,448.18 feet to a point having Coordinates of X = 2,474,723.82 and Y = 194,880.29; thence North 7,343.02 feet to a point on the Louisiana Coastline having Coordinates of X = 2,474,723.82 and Y = 202,223.31; thence Northeasterly 1,472.52 feet along the Louisiana Coastline to a point on the said Eastern boundary of Block 14, West Delta Area said boundary also being the said Western boundary of Block 15, West Delta Area having Coordinates of X = 2,476,172.00 and Y = 202,489.96; thence Northeasterly 10,625.67 feet along the Louisiana Coastline to a point on the said Eastern boundary of Block 15, West Delta Area said boundary also being the said Western boundary of Block 16, West Delta Area having Coordinates of X = 2,486,622.00 and Y = 204,414.13; thence Northeasterly 898.67 feet along the Louisiana Coastline to a point having Coordinates of X = 2,487,505.81 and Y = 204,576.86; thence South 9,696.57 feet to the point of beginning, containing approximately **2,500.00 acres**, all as more particularly outlined on a plat on file in the Office of Mineral Resources, Department of Natural Resources. All bearings, distances and coordinates are based on Louisiana Coordinate System of 1927, (North or South Zone).

NOTE: The above description of the Tract nominated for lease has been provided and corrected, where required, exclusively by the nomination party. Any mineral lease selected from this Tract and awarded by the Louisiana State Mineral Board shall be without warranty of any kind, either express, implied, or statutory, including, but not limited to, the implied warranties of merchantability and fitness for a particular purpose. Should the mineral lease awarded by the Louisiana State Mineral Board be subsequently modified, cancelled or abrogated due to the existence of conflicting leases, operating agreements, private claims or other future obligations or conditions which may affect all or any portion of the leased Tract, it shall not relieve the Lessee of the obligation to pay any bonus due thereon to the Louisiana State Mineral Board, nor shall the Louisiana State Mineral Board be obligated to refund any consideration paid by the Lessor prior to such modification, cancellation, or abrogation, including, but not limited to, bonuses, rentals and royalties.

NOTE: The State of Louisiana does hereby reserve, and this lease shall be subject to, the imprescriptible right of surface use in the nature of a servitude in favor of the Department of Natural Resources, including its Offices and Commissions, for the sole purpose of implementing, constructing, servicing and maintaining approved coastal zone management and/or restoration projects. Utilization of any and all rights derived under this lease by the mineral lessee, its agents, successors or assigns, shall not interfere with nor hinder the reasonable surface use by the Department of Natural Resources, its Offices or Commissions, as herein above reserved.

Applicant: Erin Bila

Bidder	Cash Payment	Price/ Acre	Rental	Oil	Gas	Other



BLOCK WD0016

BLOCK WD0015

BLOCK
WD0014

WEST DELTA AREA

PLAQUEMINES PARISH

P.O.B.
X=2,487,505.81
Y=194,880.29



TRACT 35598 - Portion of Blocks 8, and 9, Grand Isle Area, and Block 14, West Delta Area, Plaquemines Parish, Louisiana

The beds and bottoms of all water bodies belonging to the State of Louisiana located in that portion of Blocks 8, and 9, Grand Isle Area, and Block 14, West Delta Area, together with any present lands formed by accretion to the shoreline, located in Plaquemines Parish, Louisiana, and not presently under mineral lease on September 10, 2003, the geographical area of which is more fully described as follows: Beginning at the Southeast corner of State Lease No. 797, as amended having Coordinates of X = 2,465,825.00 and Y = 185,535.39; thence North 22 degrees 25 minutes 16 seconds East 7,826.23 feet along the Eastern boundary of said State Lease No. 797, as amended to a point having Coordinates of X = 2,468,810.01 and Y = 192,770.00; thence North 3,575.00 feet along the said Eastern boundary of State Lease No. 797, as amended to a point having Coordinates of X = 2,468,810.01 and Y = 196,345.00; thence North 35 degrees 11 minutes 49 seconds West 4,831.80 feet along the said Eastern boundary of State Lease No. 797, as amended to its Northeast corner, said corner also being on the North line of Block 9, Grand Isle Area, also being the Southern boundary of State Lease No. 16229 having Coordinates of X = 2,466,025.02 and Y = 200,293.43; thence East 3,813.89 feet along the said Southern boundary of State Lease No. 16229 to its Southeast corner having Coordinates of X = 2,469,838.91 and Y = 200,293.43; thence North 1,030.41 feet along the Eastern boundary of said State Lease No. 16229 to a point on the Louisiana Coastline having Coordinates of X = 2,469,838.91 and Y = 201,323.84; thence Northeasterly 2,622.38 feet along the Louisiana Coastline to a point on the Eastern boundary of Block 8, Grand Isle Area, said boundary also being the Western boundary of Block 14, West Delta Area having Coordinates of X = 2,472,417.93 and Y = 201,798.72; thence Northeasterly 2,344.65 feet along the Louisiana Coastline to a point having Coordinates of X = 2,474,723.82 and Y = 202,223.31; thence South 15,862.81 feet to a point on the Southern boundary of said Block 14, West Delta Area having Coordinates of X = 2,474,723.82 and Y = 186,360.50; thence West 2,305.89 feet along the said Southern boundary of Block 14, West Delta Area to its Southwest corner said corner also being a point on the said Eastern boundary of said Block 9, Grand Isle Area having Coordinates of X = 2,472,417.93 and Y = 186,360.50; thence South 825.11 feet along the said Eastern boundary of Block 9 Grand Isle Area to its Southeast corner having Coordinates of X = 2,472,417.93 and Y = 185,535.39; thence West 6,592.93 feet along the Southern boundary of said Block 9, Grand Isle Area to the point of beginning, containing approximately **2,500.00 acres**, all as more particularly outlined on a plat on file in the Office of Mineral Resources, Department of Natural Resources. All bearings, distances and coordinates are based on Louisiana Coordinate System of 1927, (North or South Zone).

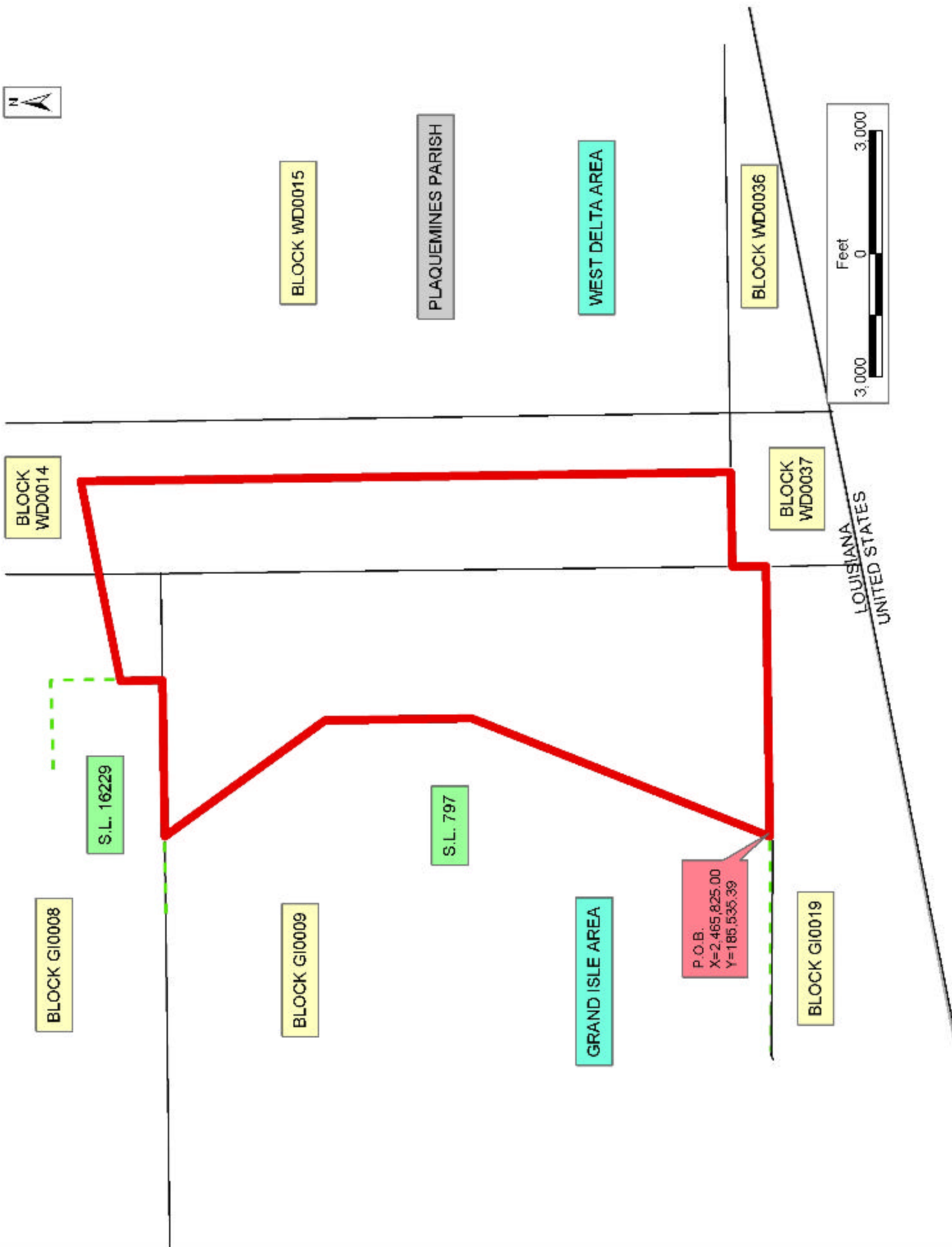
NOTE: The above description of the Tract nominated for lease has been provided and corrected, where required, exclusively by the nomination party. Any mineral lease selected from this Tract and awarded by the Louisiana State Mineral Board shall be without warranty of any kind,

either express, implied, or statutory, including, but not limited to, the implied warranties of merchantability and fitness for a particular purpose. Should the mineral lease awarded by the Louisiana State Mineral Board be subsequently modified, cancelled or abrogated due to the existence of conflicting leases, operating agreements, private claims or other future obligations or conditions which may affect all or any portion of the leased Tract, it shall not relieve the Lessee of the obligation to pay any bonus due thereon to the Louisiana State Mineral Board, nor shall the Louisiana State Mineral Board be obligated to refund any consideration paid by the Lessor prior to such modification, cancellation, or abrogation, including, but not limited to, bonuses, rentals and royalties.

NOTE: The State of Louisiana does hereby reserve, and this lease shall be subject to, the imprescriptible right of surface use in the nature of a servitude in favor of the Department of Natural Resources, including its Offices and Commissions, for the sole purpose of implementing, constructing, servicing and maintaining approved coastal zone management and/or restoration projects. Utilization of any and all rights derived under this lease by the mineral lessee, its agents, successors or assigns, shall not interfere with nor hinder the reasonable surface use by the Department of Natural Resources, its Offices or Commissions, as herein above reserved.

Applicant: Erin Bila

Bidder	Cash Payment	Price/ Acre	Rental	Oil	Gas	Other



TRACT 35599 - Portion of Blocks 14, 15, and 16, West Delta Area, Plaquemines Parish, Louisiana

The beds and bottoms of all water bodies belonging to the State of Louisiana located in that portion of Blocks 14, 15, and 16, West Delta Area, together with any present lands formed by accretion to the shoreline, located in Plaquemines Parish, Louisiana, and not presently under mineral lease on September 10, 2003, the geographical area of which is more fully described as follows: Beginning at a Point having Coordinates of X = 2,487,505.81 and Y = 194,880.29; thence South 8,519.79 feet to a point on the Southern boundary of Block 16, West Delta Area having Coordinates of X = 2,487,505.81 and Y = 186,360.50; thence West 883.81 feet along the said Southern boundary of Block 16, West Delta Area to its Southwest corner said corner also being the Southeast corner of Block 15, West Delta Area having Coordinates of X = 2,486,622.00 and Y = 186,360.50; thence West 10,450.00 feet along the Southern boundary of said Block 15, West Delta Area to its Southwest corner said corner also being the Southeast corner of Block 14, West Delta Area having Coordinates of X = 2,476,172.00 and Y = 186,360.50; thence West 1,448.18 feet along the Southern boundary of said Block 14, West Delta Area to a point having Coordinates of X = 2,474,723.82 and Y = 186,360.50; thence North 8,519.79 feet to a point having Coordinates of X = 2,474,723.82 and Y = 194,880.29; thence East 1,448.18 feet to a point on the Eastern boundary of said Block 14, West Delta Area said boundary also being the Western boundary of said Block 15, West Delta Area having Coordinates of X = 2,476,172.00 and Y = 194,880.29; thence East 10,450.00 feet to a point on the Eastern boundary of said Block 15, West Delta Area said boundary also being the Western boundary of said Block 16, West Delta Area having Coordinates of X = 2,486,622.00 and Y = 194,880.29; thence East 883.81 feet to the point of beginning, containing approximately **2,500.00 acres**, all as more particularly outlined on a plat on file in the Office of Mineral Resources, Department of Natural Resources. All bearings, distances and coordinates are based on Louisiana Coordinate System of 1927, (North or South Zone).

NOTE: The above description of the Tract nominated for lease has been provided and corrected, where required, exclusively by the nomination party. Any mineral lease selected from this Tract and awarded by the Louisiana State Mineral Board shall be without warranty of any kind, either express, implied, or statutory, including, but not limited to, the implied warranties of merchantability and fitness for a particular purpose. Should the mineral lease awarded by the Louisiana State Mineral Board be subsequently modified, cancelled or abrogated due to the existence of conflicting leases, operating agreements, private claims or other future obligations or conditions which may affect all or any portion of the leased Tract, it shall not relieve the Lessee of the obligation to pay any bonus due thereon to the Louisiana State Mineral Board, nor shall the Louisiana State Mineral Board be obligated to refund any consideration paid by the Lessor prior to such modification, cancellation, or abrogation, including, but not limited to, bonuses, rentals and royalties.

NOTE: The State of Louisiana does hereby reserve, and this lease shall be subject to, the imprescriptible right of surface use in the nature of a servitude in favor of the Department of Natural Resources, including its Offices and Commissions, for the sole purpose of implementing, constructing, servicing and maintaining approved coastal zone management and/or restoration projects. Utilization of any and all rights derived under this lease by the mineral lessee, its agents, successors or assigns, shall not interfere with nor hinder the reasonable surface use by the Department of Natural Resources, its Offices or Commissions, as herein above reserved.

Applicant: Erin Bila

Bidder	Cash Payment	Price/ Acre	Rental	Oil	Gas	Other



BLOCK WD0016

PLAQUEMINES
PARISH

P.O.B.
X=2,487,505.81
Y=194,880.29

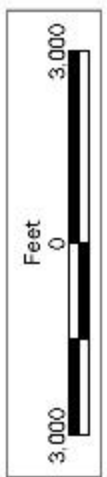
BLOCK WD0015

WEST DELTA AREA

BLOCK
WD0014

BLOCK WD0036

BLOCK
WD0037



BLOCK GI0009

GRAND ISLE AREA

BLOCK GI0019

LOUISIANA
UNITED STATES