

TRACT 35642 - Lafourche and Terrebonne Parishes, Louisiana

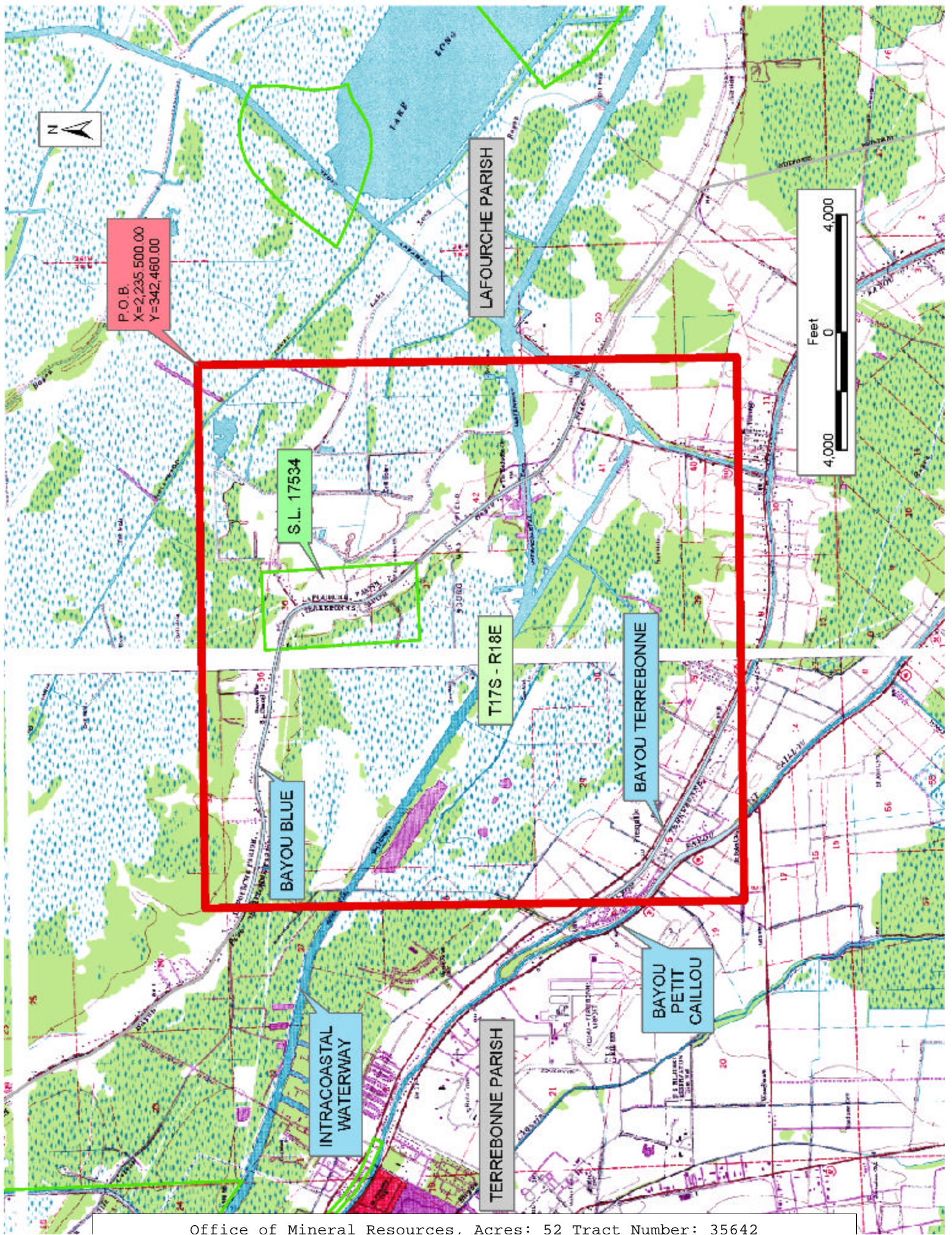
A certain Tract of land, excluding the beds and bottoms of all navigable waters, belonging to and not presently under mineral lease from Louisiana Department Of Transportation And Development on September 10, 2003, being more fully described as follows: Beginning at a point having Coordinates of X = 2,235,500.00 and Y = 342,460.00; thence South 18,340.00 feet to a point having Coordinates of X = 2,235,500.00 and Y = 324,120.00; thence West 18,480.00 feet to a point having Coordinates of X = 2,217,020.00 and Y = 324,120.00; thence North 18,340.00 feet to a point having Coordinates of X = 2,217,020.00 and Y = 342,460.00; thence East 18,480.00 feet to the point of beginning, containing approximately **52 acres**, all as more particularly outlined on a plat on file in the Office of Mineral Resources, Department of Natural Resources. The description is based on information provided by the State Agency regarding location and ownership of surface and mineral rights. All distances, bearing and coordinates, if applicable, are based on the Louisiana Coordinate System of 1927, (North or South Zone).

NOTE: The above description of the Tract nominated for lease has been provided and corrected, where required, exclusively by the nomination party. Any mineral lease selected from this Tract and awarded by the Louisiana State Mineral Board shall be without warranty of any kind, either express, implied, or statutory, including, but not limited to, the implied warranties of merchantability and fitness for a particular purpose. Should the mineral lease awarded by the Louisiana State Mineral Board be subsequently modified, cancelled or abrogated due to the existence of conflicting leases, operating agreements, private claims or other future obligations or conditions which may affect all or any portion of the leased Tract, it shall not relieve the Lessee of the obligation to pay any bonus due thereon to the Louisiana State Mineral Board, nor shall the Louisiana State Mineral Board be obligated to refund any consideration paid by the Lessor prior to such modification, cancellation, or abrogation, including, but not limited to, bonuses, rentals and royalties.

NOTE: The State of Louisiana does hereby reserve, and this lease shall be subject to, the imprescriptible right of surface use in the nature of a servitude in favor of the Department of Natural Resources, including its Offices and Commissions, for the sole purpose of implementing, constructing, servicing and maintaining approved coastal zone management and/or restoration projects. Utilization of any and all rights derived under this lease by the mineral lessee, its agents, successors or assigns, shall not interfere with nor hinder the reasonable surface use by the Department of Natural Resources, its Offices or Commissions, as herein above reserved.

Applicant: Harold J. Anderson, Inc. to Agency and by Resolution from the Louisiana Department Of Transportation And Development authorizing the Mineral Board to act in its behalf

Bidder	Cash Payment	Price/Acre	Rental	Oil	Gas	Other



P.O.B.
X=2,235,500.00
Y=342,460.00

LAFOURCHE PARISH

Feet
0 4,000

S.L. 17534

T17S - R18E

BAYOU TERREBONNE

BAYOU BLUE

BAYOU PETIT CAILLOU

INTRACOASTAL WATERWAY

TERREBONNE PARISH

TRACT 35643 - Lafourche and Terrebonne Parishes, Louisiana

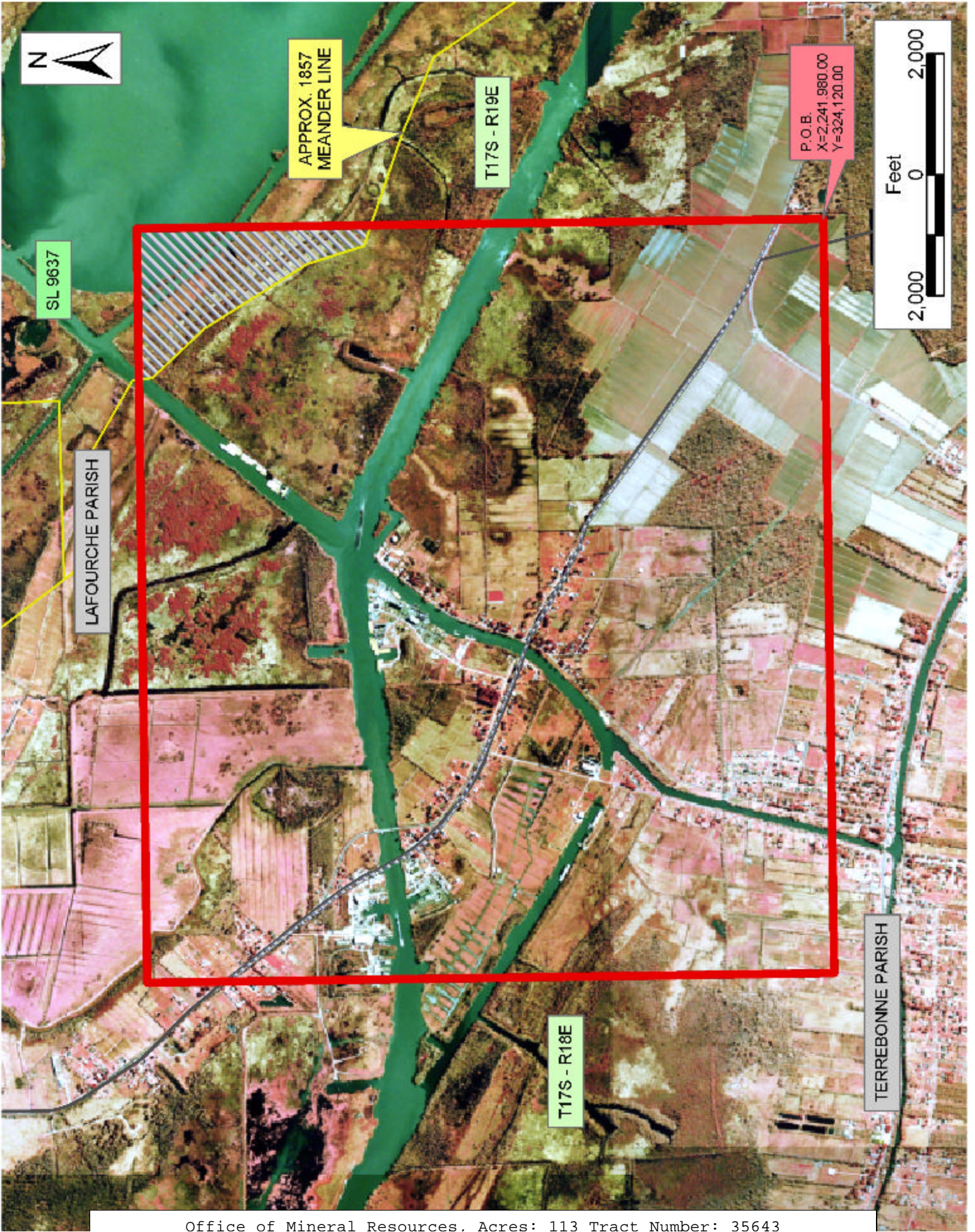
All of the lands now or formerly constituting the beds and bottoms of all water bodies of every nature and description the title of which vests in the State of Louisiana, together with all islands arising therein and other lands formed by accretion or by reliction, where allowed by law, excepting tax adjudicated lands, and not presently under mineral lease on September 10, 2003, situated in Lafourche and Terrebonne Parishes, Louisiana, and more particularly described as follows: Beginning at a point having Coordinates of X = 2,241,980.00 and Y = 324,120.00; thence West 12,480.00 feet to a point having Coordinates of X = 2,229,500.00 and Y = 324,120.00; thence North 11,360.00 feet to a point having Coordinates of X = 2,229,500.00 and Y = 335,480.00; thence East 12,480.00 feet to a point having Coordinates of X = 2,241,980.00 and Y = 335,480.00; thence South 11,360.00 feet to the point of beginning, containing approximately **113 acres**, all as more particularly outlined on a plat on file in the Office of Mineral Resources, Department of Natural Resources. All bearings, distances and coordinates are based on Louisiana Coordinate System of 1927, (North or South Zone), where applicable.

NOTE: The above description of the Tract nominated for lease has been provided and corrected, where required, exclusively by the nomination party. Any mineral lease selected from this Tract and awarded by the Louisiana State Mineral Board shall be without warranty of any kind, either express, implied, or statutory, including, but not limited to, the implied warranties of merchantability and fitness for a particular purpose. Should the mineral lease awarded by the Louisiana State Mineral Board be subsequently modified, cancelled or abrogated due to the existence of conflicting leases, operating agreements, private claims or other future obligations or conditions which may affect all or any portion of the leased Tract, it shall not relieve the Lessee of the obligation to pay any bonus due thereon to the Louisiana State Mineral Board, nor shall the Louisiana State Mineral Board be obligated to refund any consideration paid by the Lessor prior to such modification, cancellation, or abrogation, including, but not limited to, bonuses, rentals and royalties.

NOTE: The State of Louisiana does hereby reserve, and this lease shall be subject to, the imprescriptible right of surface use in the nature of a servitude in favor of the Department of Natural Resources, including its Offices and Commissions, for the sole purpose of implementing, constructing, servicing and maintaining approved coastal zone management and/or restoration projects. Utilization of any and all rights derived under this lease by the mineral lessee, its agents, successors or assigns, shall not interfere with nor hinder the reasonable surface use by the Department of Natural Resources, its Offices or Commissions, as herein above reserved.

Applicant: Harold J. Anderson, Inc.

Bidder	Cash Payment	Price/Acre	Rental	Oil	Gas	Other



TRACT 35644 - Lafourche Parish, Louisiana

All of the lands now or formerly constituting the beds and bottoms of all water bodies of every nature and description the title of which vests in the State of Louisiana, together with all islands arising therein and other lands formed by accretion or by reliction, where allowed by law, excepting tax adjudicated lands, and not presently under mineral lease on September 10, 2003, situated in Lafourche Parish, Louisiana, and more particularly described as follows: Beginning at a point having Coordinates of X = 2,241,980.00 and Y = 324,120.00; thence North 11,360.00 feet to a point having Coordinates of X = 2,241,980.00 and Y = 335,480.00; thence East 12,480.00 feet to a point having Coordinates of X = 2,254,460.00 and Y = 335,480.00; thence South 3,480.00 feet to a point on the North line of State Lease No. 17416 having Coordinates of X = 2,254,460.00 and Y = 332,000.00; thence along the boundary of said State Lease No. 17416 the following courses: West 760.00 feet, and South approximately 276 feet to a point on the Northern boundary of State Lease No. 328, as amended, having a Coordinate of X = 2,253,700.00; thence Northwesterly, Southwesterly, Southeasterly and Northerly on the boundary of said State Lease No. 328 to a point on the South line of said State Lease No. 17416 having a Coordinate of Y = 329,400.00; thence East approximately 477 feet on the South line of said State Lease No. 17416 to a point having Coordinates of X = 2,254,460.00 and Y = 329,400.00; thence South 5,280.00 feet to a point having Coordinates of X = 2,254,460.00 and Y = 324,120.00; thence West 12,480.00 feet to the point of beginning, **LESS AND EXCEPT** any portion of State Lease No. 328, as amended, that may lie within the above described tract, containing approximately **631 acres**, all as more particularly outlined on a plat on file in the Office of Mineral Resources, Department of Natural Resources. All bearings, distances and coordinates are based on Louisiana Coordinate System of 1927, (North or South Zone), where applicable.

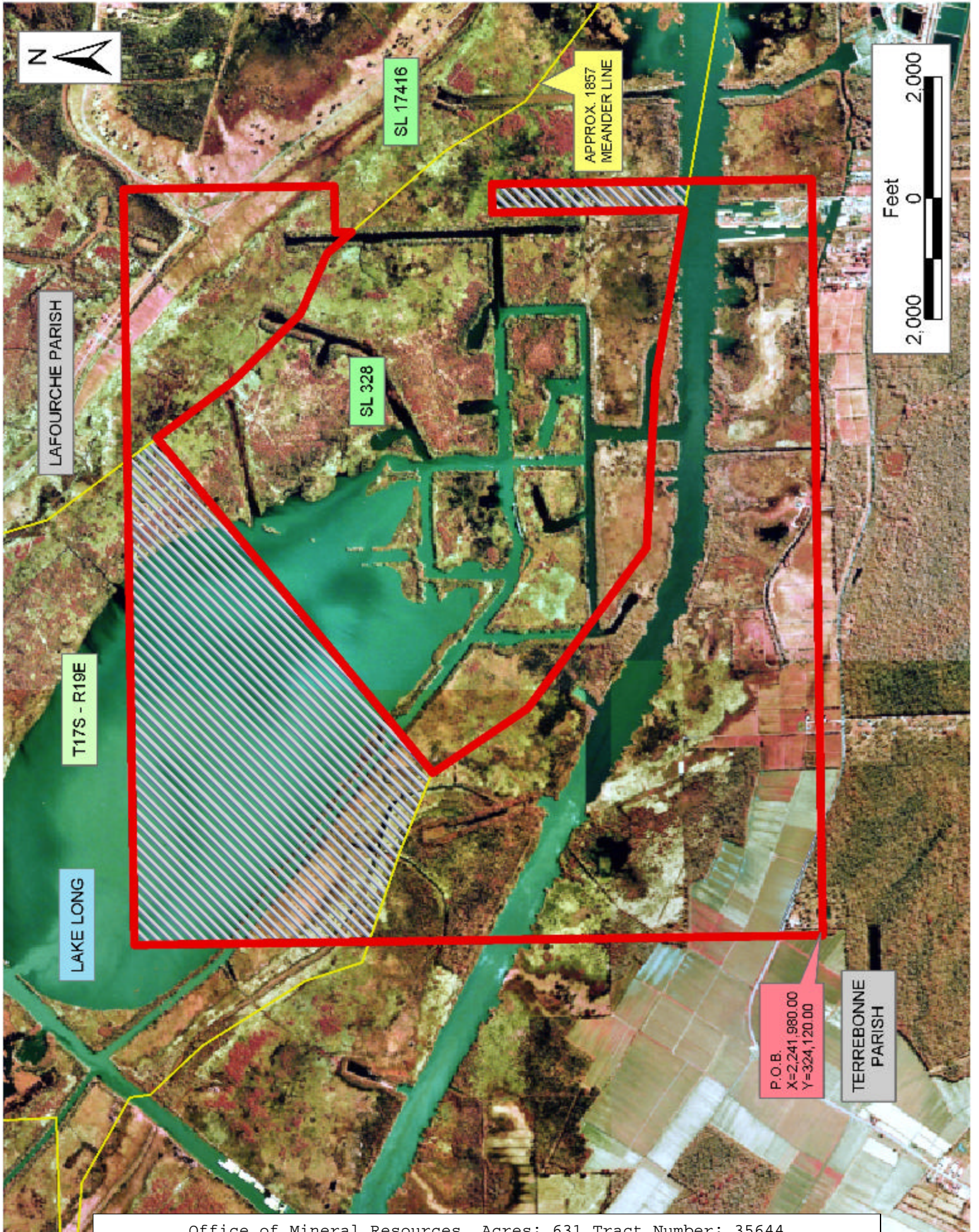
NOTE: The above description of the Tract nominated for lease has been provided and corrected, where required, exclusively by the nomination party. Any mineral lease selected from this Tract and awarded by the Louisiana State Mineral Board shall be without warranty of any kind, either express, implied, or statutory, including, but not limited to, the implied warranties of merchantability and fitness for a particular purpose. Should the mineral lease awarded by the Louisiana State Mineral Board be subsequently modified, cancelled or abrogated due to the existence of conflicting leases, operating agreements, private claims or other future obligations or conditions which may affect all or any portion of the leased Tract, it shall not relieve the Lessee of the obligation to pay any bonus due thereon to the Louisiana State Mineral Board, nor shall the Louisiana State Mineral Board be obligated to refund any consideration paid by the Lessor prior to such modification, cancellation, or abrogation, including, but not limited to, bonuses, rentals and royalties.

NOTE: The State of Louisiana does hereby reserve, and this lease shall be subject to, the imprescriptible right of surface use in the nature of a

servitude in favor of the Department of Natural Resources, including its Offices and Commissions, for the sole purpose of implementing, constructing, servicing and maintaining approved coastal zone management and/or restoration projects. Utilization of any and all rights derived under this lease by the mineral lessee, its agents, successors or assigns, shall not interfere with nor hinder the reasonable surface use by the Department of Natural Resources, its Offices or Commissions, as herein above reserved.

Applicant: Harold J. Anderson, Inc.

Bidder	Cash Payment	Price/Acre	Rental	Oil	Gas	Other



TRACT 35645 - Terrebonne Parish, Louisiana

All of the lands now or formerly constituting the beds and bottoms of all water bodies of every nature and description the title of which vests in the State of Louisiana, together with all islands arising therein and other lands formed by accretion or by reliction, where allowed by law, excepting tax adjudicated lands, and not presently under mineral lease on September 10, 2003, situated in Terrebonne Parish, Louisiana, and more particularly described as follows: Beginning at a point having Coordinates of X = 2,217,020.00 and Y = 335,480.00; thence East 8,989.50 feet to a point on the West line of State Lease No. 17534 having Coordinates of X = 2,226,009.50 and Y = 335,480.00; thence along the boundary of said State Lease No. 17534 the following courses: South 02 degrees 50 minutes 29 seconds East 454.91 feet, North 88 degrees 00 minutes 00 seconds East 2,640.00 feet, and North 02 degrees 50 minutes 29 seconds West 362.66 feet to a point having Coordinates of X = 2,228,652.47 and Y = 335,480.00; thence East 847.53 feet to a point having Coordinates of X = 2,229,500.00 and Y = 335,480.00; thence South 11,360.00 feet to a point having Coordinates of X = 2,229,500.00 and Y = 324,120.00; thence West 12,480.00 feet to a point having Coordinates of X = 2,217,020.00 and Y = 324,120.00; thence North 11,360.00 feet to the point of beginning, containing approximately **24 acres**, all as more particularly outlined on a plat on file in the Office of Mineral Resources, Department of Natural Resources. All bearings, distances and coordinates are based on Louisiana Coordinate System of 1927, (North or South Zone), where applicable.

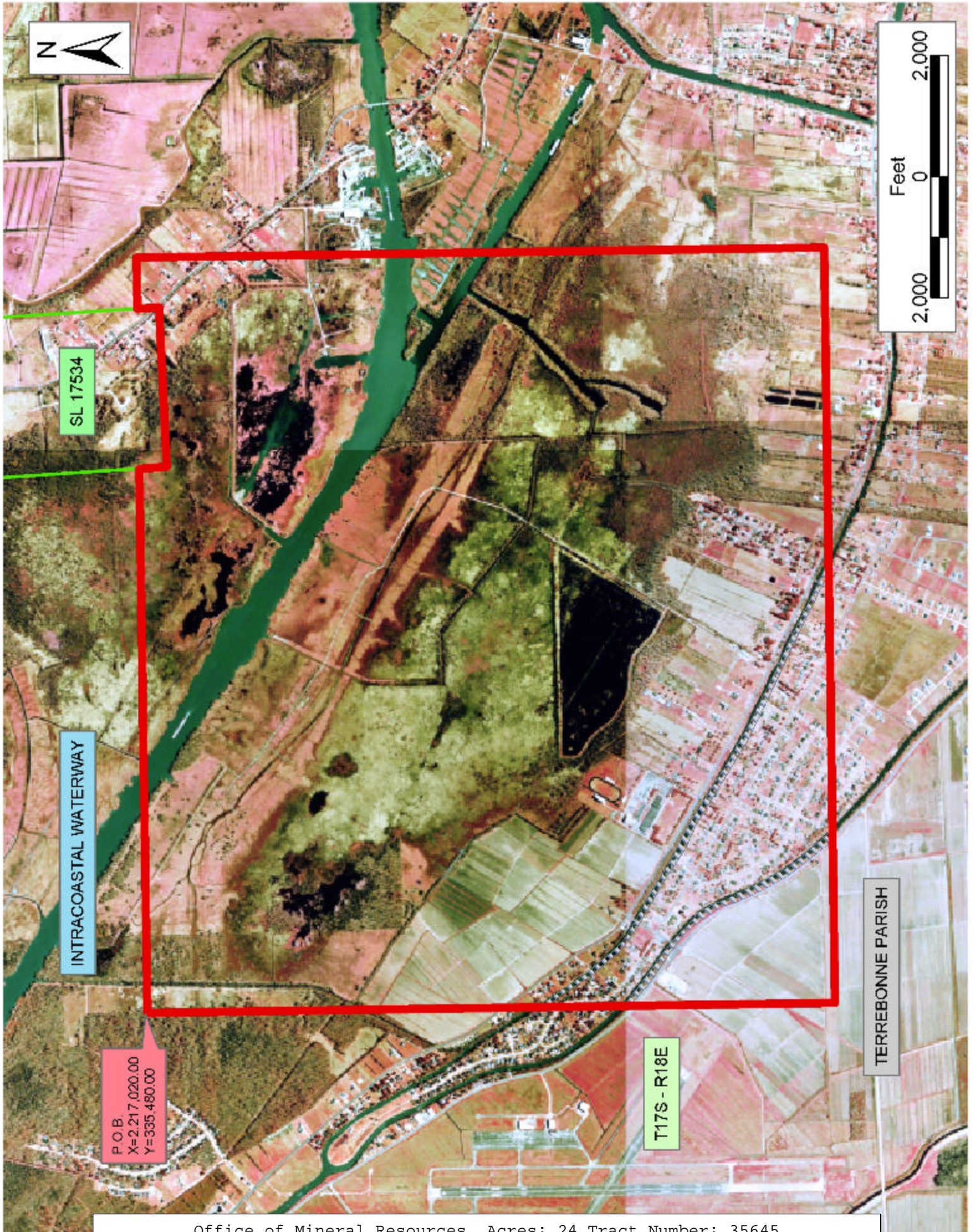
NOTE: The above description of the Tract nominated for lease has been provided and corrected, where required, exclusively by the nomination party. Any mineral lease selected from this Tract and awarded by the Louisiana State Mineral Board shall be without warranty of any kind, either express, implied, or statutory, including, but not limited to, the implied warranties of merchantability and fitness for a particular purpose. Should the mineral lease awarded by the Louisiana State Mineral Board be subsequently modified, cancelled or abrogated due to the existence of conflicting leases, operating agreements, private claims or other future obligations or conditions which may affect all or any portion of the leased Tract, it shall not relieve the Lessee of the obligation to pay any bonus due thereon to the Louisiana State Mineral Board, nor shall the Louisiana State Mineral Board be obligated to refund any consideration paid by the Lessor prior to such modification, cancellation, or abrogation, including, but not limited to, bonuses, rentals and royalties.

NOTE: The State of Louisiana does hereby reserve, and this lease shall be subject to, the imprescriptible right of surface use in the nature of a servitude in favor of the Department of Natural Resources, including its Offices and Commissions, for the sole purpose of implementing, constructing, servicing and maintaining approved coastal zone management and/or restoration projects. Utilization of any and all rights derived under this lease by the mineral lessee, its agents, successors or assigns, shall not interfere with nor hinder the reasonable surface use by the

Department of Natural Resources, its Offices or Commissions, as herein above reserved.

Applicant: Harold J. Anderson, Inc.

Bidder	Cash Payment	Price/Acre	Rental	Oil	Gas	Other



TRACT 35646 - Portion of Blocks 48, and 52, Main Pass Area, Revised, Plaquemines Parish, Louisiana

All of the lands now or formerly constituting the beds and bottoms of all water bodies of every nature and description the title of which vests in the State of Louisiana, together with all islands arising therein and other lands formed by accretion or by reliction, where allowed by law, excepting tax adjudicated lands, and not presently under mineral lease on September 10, 2003, situated in Plaquemines Parish, Louisiana, and more particularly described as follows: Beginning at a point within Block 48, Main Pass Area, Revised, having Coordinates of X = 2,639,550.00 and Y = 266,080.00; thence East 7,800.00 feet to the Northwest corner of Block 52, Main Pass Area, Revised, having Coordinates of X = 2,647,350.00 and Y = 266,080.00; thence East 2,675.00 feet along the North line of said Block 52 to the Southwest corner of State Lease No. 1268, having Coordinates of X = 2,650,025.00 and Y = 266,080.00; thence East 2,725.00 feet along the South line of said State Lease No. 1268 to the Northwest corner of State Lease No. 16664 having Coordinates of X = 2,652,750.00 and Y = 266,080.00; thence South 1,223.84 feet along the Western boundary of said State Lease No. 16664 to its most Westerly Southwest corner having Coordinates of X = 2,652,750.00 and Y = 264,856.16; thence South 1,067.47 feet to the Northwest corner of State Lease No. 16665 having Coordinates of X = 2,652,750.00 and Y = 263,788.69; thence South 1,956.21 feet along the West line of said State Lease No. 16665 to its Southwest corner having Coordinates of X = 2,652,750.00 and Y = 261,832.48; thence South approximately 1,447 feet to a point on the common boundary line between said Block 52 and State Lease No. 195, as amended; thence Westerly approximately 5,401 feet along the common boundary line between said Block 52 and said State Lease No. 195 to the most Westerly Southwest corner of said Block 52, said corner also being the Southeast corner of said Block 48; thence Westerly approximately 3,491 feet along the common boundary line between said Block 48 and said State Lease No. 195 to the intersection of a line that bears North 15 degrees 30 minutes 00 seconds West through a point having Coordinates of X = 2,643,531.15 and Y = 261,415.67; thence North 15 degrees 30 minutes 00 seconds West approximately 1,229 feet to a point having Coordinates of X = 2,643,531.15 and Y = 261,415.67; thence North 41 degrees 40 minutes 00 seconds West 5,988.53 feet to a point having Coordinates of X = 2,639,550.00 and Y = 265,889.25; thence North 190.75 feet to the point of beginning, **LESS AND EXCEPT** that portion, if any, of State Lease No. 195, as amended, that may lie within the above described tract, containing approximately **1,242 acres**, all as more particularly outlined on a plat on file in the Office of Mineral Resources, Department of Natural Resources. All bearings, distances and coordinates are based on Louisiana Coordinate System of 1927, (North or South Zone), where applicable.

NOTE: The above description of the Tract nominated for lease has been provided and corrected, where required, exclusively by the nomination party. Any mineral lease selected from this Tract and awarded by the Louisiana State Mineral Board shall be without warranty of any kind,

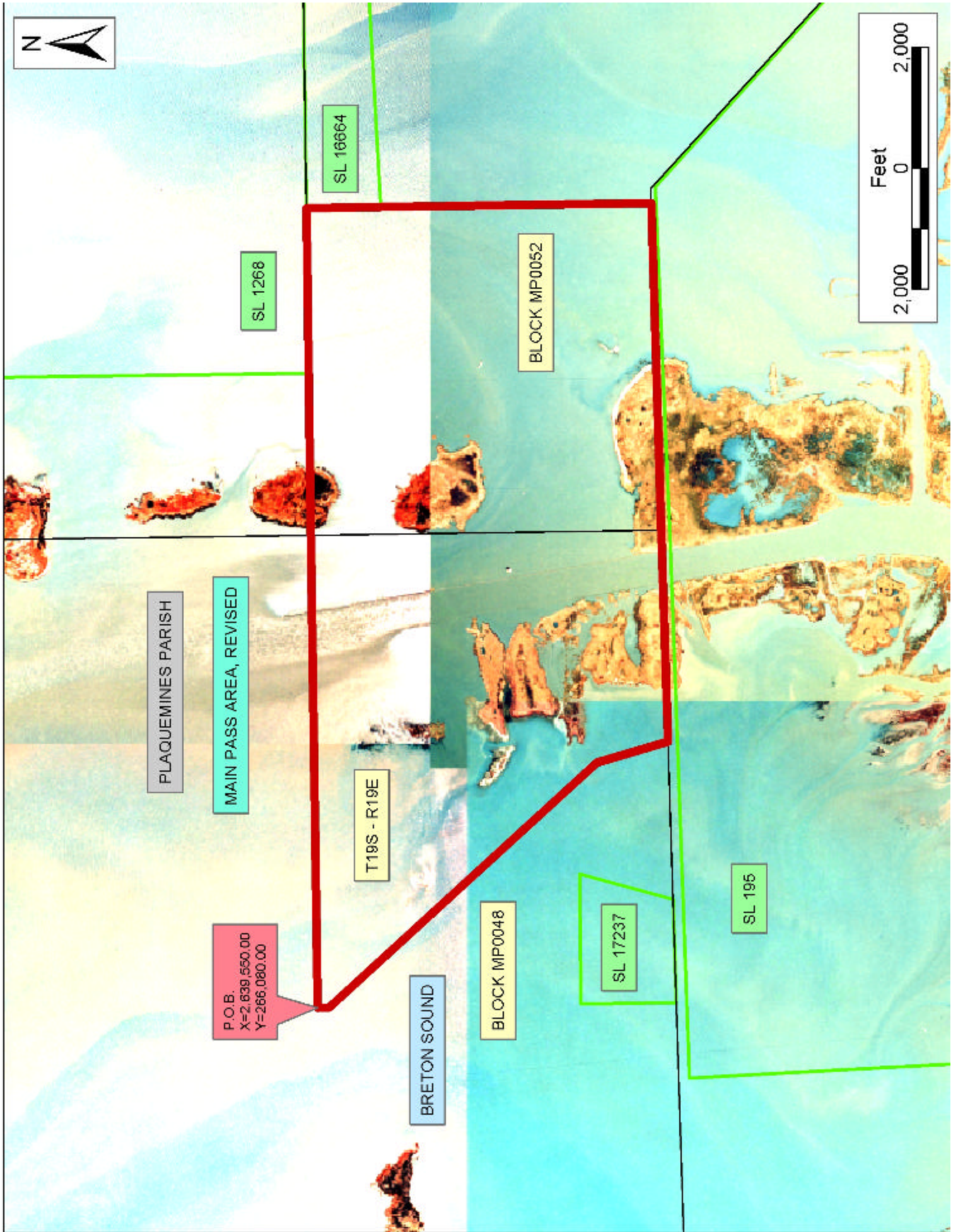
either express, implied, or statutory, including, but not limited to, the implied warranties of merchantability and fitness for a particular purpose. Should the mineral lease awarded by the Louisiana State Mineral Board be subsequently modified, cancelled or abrogated due to the existence of conflicting leases, operating agreements, private claims or other future obligations or conditions which may affect all or any portion of the leased Tract, it shall not relieve the Lessee of the obligation to pay any bonus due thereon to the Louisiana State Mineral Board, nor shall the Louisiana State Mineral Board be obligated to refund any consideration paid by the Lessor prior to such modification, cancellation, or abrogation, including, but not limited to, bonuses, rentals and royalties.

NOTE: The State of Louisiana does hereby reserve, and this lease shall be subject to, the imprescriptible right of surface use in the nature of a servitude in favor of the Department of Natural Resources, including its Offices and Commissions, for the sole purpose of implementing, constructing, servicing and maintaining approved coastal zone management and/or restoration projects. Utilization of any and all rights derived under this lease by the mineral lessee, its agents, successors or assigns, shall not interfere with nor hinder the reasonable surface use by the Department of Natural Resources, its Offices or Commissions, as herein above reserved.

NOTE: The Department of Wildlife and Fisheries has designated certain areas in the coastal waters of the State of Louisiana as Oyster Seed Bed Areas. The exact location of those Seed Bed Areas must be obtained from the Department of Wildlife and Fisheries and any work done under a mineral lease from the State of Louisiana may necessarily be conducted in conformity with the rules and regulations promulgated by the said Department of Wildlife and Fisheries for Oyster Seed Bed Areas.

Applicant: Freese Oil Realtors

Bidder	Cash Payment	Price/Acre	Rental	Oil	Gas	Other



TRACT 35647 - Portion of Block 48, Main Pass Area, Revised, Plaquemines Parish, Louisiana

All of the lands now or formerly constituting the beds and bottoms of all water bodies of every nature and description the title of which vests in the State of Louisiana, together with all islands arising therein and other lands formed by accretion or by reliction, where allowed by law, excepting tax adjudicated lands, and not presently under mineral lease on September 10, 2003, situated in Plaquemines Parish, Louisiana, and more particularly described as follows: Beginning at a point within Block 48, Main Pass Area, Revised, being the Northwest corner of State Lease No. 17237 having Coordinates of X = 2,639,550.00 and Y = 261,730.00; thence North 4,159.25 feet to a point having Coordinates of X = 2,639,550.00 and Y = 265,889.25; thence South 41 degrees 40 minutes 00 seconds East 5,988.53 feet to a point having Coordinates of X = 2,643,531.15 and Y = 261,415.67; thence South 15 degrees 30 minutes 00 seconds East approximately 1,229 feet to a point on the Northern boundary of State Lease No. 195, as amended; thence Westerly approximately 2,603 feet along the Northern boundary of said State Lease No. 195 to the Southeast corner of said State Lease No. 17237; thence North 16 degrees 00 minutes 00 seconds East approximately 1,606 feet along the East line of said State Lease No. 17237 to its Northeast corner having Coordinates of X = 2,641,700.00 and Y = 261,730.00; thence West 2,150.00 feet along the North line of said State Lease No. 17237 to the point of beginning, **LESS AND EXCEPT** that portion, if any, of State Lease No. 195, as amended, that may lie within the above described tract, containing approximately **252 gross acres** and **151.2 net acres**, all as more particularly outlined on a plat on file in the Office of Mineral Resources, Department of Natural Resources. All bearings, distances and coordinates are based on Louisiana Coordinate System of 1927, (North or South Zone), where applicable.

NOTE: The above description of the Tract nominated for lease has been provided and corrected, where required, exclusively by the nomination party. Any mineral lease selected from this Tract and awarded by the Louisiana State Mineral Board shall be without warranty of any kind, either express, implied, or statutory, including, but not limited to, the implied warranties of merchantability and fitness for a particular purpose. Should the mineral lease awarded by the Louisiana State Mineral Board be subsequently modified, cancelled or abrogated due to the existence of conflicting leases, operating agreements, private claims or other future obligations or conditions which may affect all or any portion of the leased Tract, it shall not relieve the Lessee of the obligation to pay any bonus due thereon to the Louisiana State Mineral Board, nor shall the Louisiana State Mineral Board be obligated to refund any consideration paid by the Lessor prior to such modification, cancellation, or abrogation, including, but not limited to, bonuses, rentals and royalties.

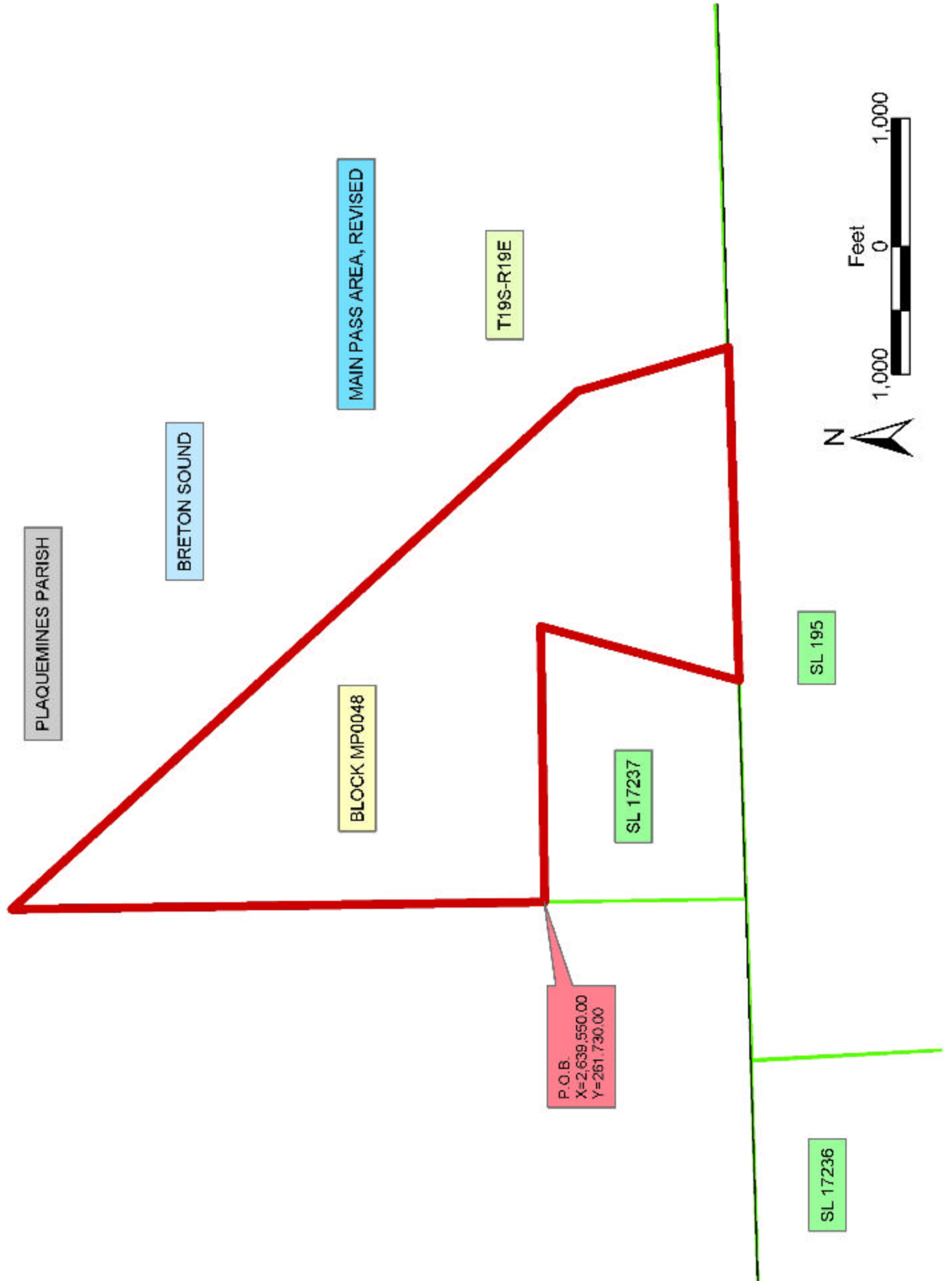
NOTE: The State of Louisiana does hereby reserve, and this lease shall be subject to, the imprescriptible right of surface use in the nature of a servitude in favor of the Department of Natural Resources, including its

Offices and Commissions, for the sole purpose of implementing, constructing, servicing and maintaining approved coastal zone management and/or restoration projects. Utilization of any and all rights derived under this lease by the mineral lessee, its agents, successors or assigns, shall not interfere with nor hinder the reasonable surface use by the Department of Natural Resources, its Offices or Commissions, as herein above reserved.

NOTE: The Department of Wildlife and Fisheries has designated certain areas in the coastal waters of the State of Louisiana as Oyster Seed Bed Areas. The exact location of those Seed Bed Areas must be obtained from the Department of Wildlife and Fisheries and any work done under a mineral lease from the State of Louisiana may necessarily be conducted in conformity with the rules and regulations promulgated by the said Department of Wildlife and Fisheries for Oyster Seed Bed Areas.

Applicant: Freese Oil Realtors

Bidder	Cash Payment	Price/Acre	Rental	Oil	Gas	Other



TRACT 35648 - Terrebonne Parish, Louisiana

All of the lands now or formerly constituting the beds and bottoms of all water bodies of every nature and description the title of which vests in the State of Louisiana, together with all islands arising therein and other lands formed by accretion or by reliction, where allowed by law, excepting tax adjudicated lands, and not presently under mineral lease on September 10, 2003, situated in Terrebonne Parish, Louisiana, and more particularly described as follows: Beginning at a point having Coordinates of X = 2,122,340.00 and Y = 262,160.00; thence North 6,890.00 feet to a point having Coordinates of X = 2,122,340.00 and Y = 269,050.00; thence East 6,430.00 feet to a point having Coordinates of X = 2,128,770.00 and Y = 269,050.00; thence South 3,387.64 feet to a point on the North line of State Lease No. 17601 having a Coordinate of X = 2,128,770.00; thence Westerly on the North line of said State Lease No. 17601 to its Northwest corner having Coordinates of X = 2,125,024.23 and Y = 265,820.51; thence South 00 degrees 41 minutes 22 seconds East 3,660.77 feet on the West line of said State Lease No. 17601 to a point having Coordinates of X = 2,125,068.27 and Y = 262,160.00; thence West 2,728.27 feet to the point of beginning, containing approximately **30 acres**, all as more particularly outlined on a plat on file in the Office of Mineral Resources, Department of Natural Resources. All bearings, distances and coordinates are based on Louisiana Coordinate System of 1927, (North or South Zone), where applicable.

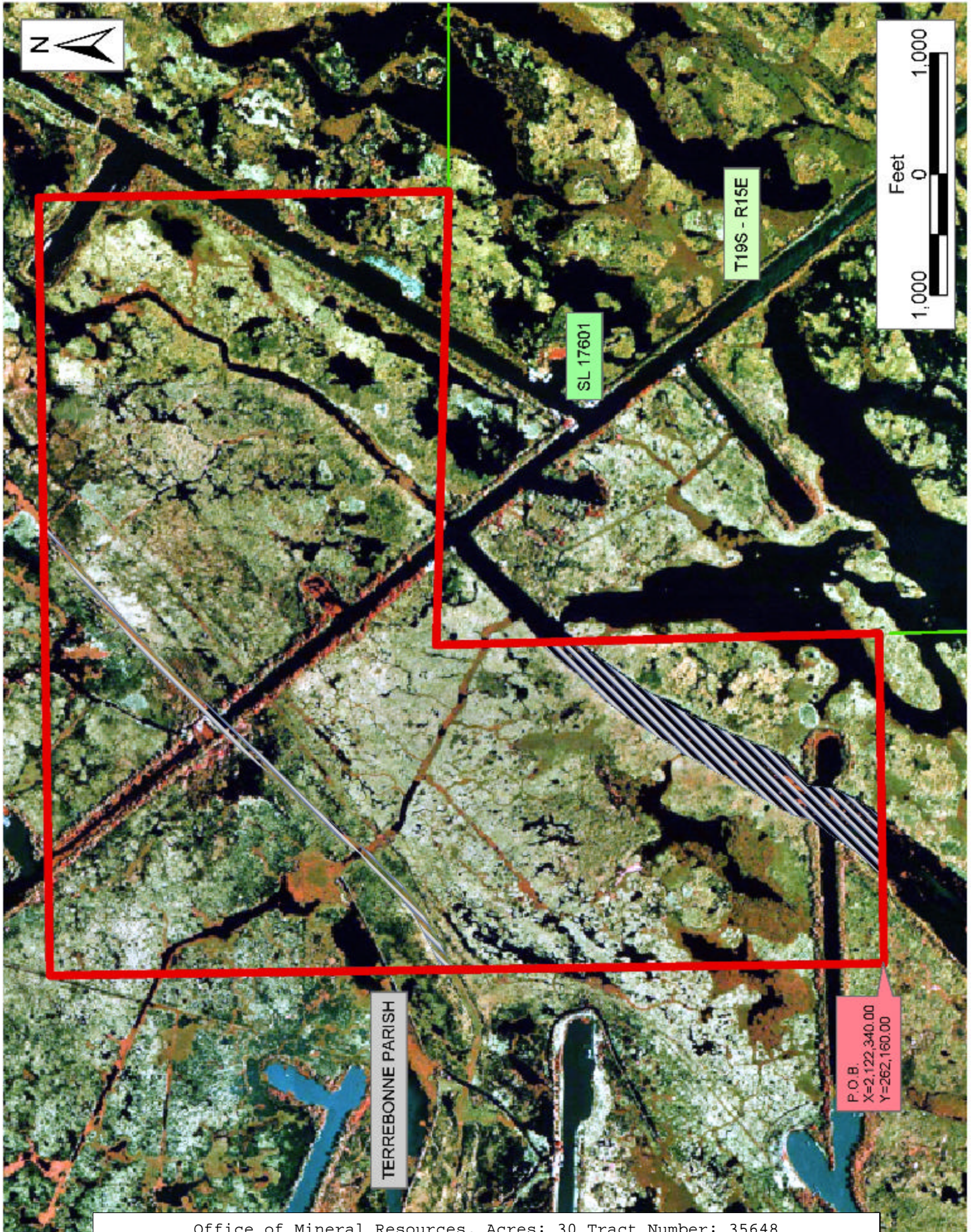
NOTE: The above description of the Tract nominated for lease has been provided and corrected, where required, exclusively by the nomination party. Any mineral lease selected from this Tract and awarded by the Louisiana State Mineral Board shall be without warranty of any kind, either express, implied, or statutory, including, but not limited to, the implied warranties of merchantability and fitness for a particular purpose. Should the mineral lease awarded by the Louisiana State Mineral Board be subsequently modified, cancelled or abrogated due to the existence of conflicting leases, operating agreements, private claims or other future obligations or conditions which may affect all or any portion of the leased Tract, it shall not relieve the Lessee of the obligation to pay any bonus due thereon to the Louisiana State Mineral Board, nor shall the Louisiana State Mineral Board be obligated to refund any consideration paid by the Lessor prior to such modification, cancellation, or abrogation, including, but not limited to, bonuses, rentals and royalties.

NOTE: The State of Louisiana does hereby reserve, and this lease shall be subject to, the imprescriptible right of surface use in the nature of a servitude in favor of the Department of Natural Resources, including its Offices and Commissions, for the sole purpose of implementing, constructing, servicing and maintaining approved coastal zone management and/or restoration projects. Utilization of any and all rights derived under this lease by the mineral lessee, its agents, successors or assigns, shall not interfere with nor hinder the reasonable surface use by the

Department of Natural Resources, its Offices or Commissions, as herein above reserved.

Applicant: Harold J. Anderson, Inc.

Bidder	Cash Payment	Price/Acre	Rental	Oil	Gas	Other



TRACT 35649 - Terrebonne Parish, Louisiana

All of the lands now or formerly constituting the beds and bottoms of all water bodies of every nature and description the title of which vests in the State of Louisiana, together with all islands arising therein and other lands formed by accretion or by reliction, where allowed by law, excepting tax adjudicated lands, and not presently under mineral lease on September 10, 2003, situated in Terrebonne Parish, Louisiana, and more particularly described as follows: Beginning at the Southwest corner of State Lease No. 17602 having Coordinates of X = 2,135,746.32 and Y = 258,400.75; thence Southerly to a point having Coordinates of X = 2,135,814.13 and Y = 256,562.92; thence Easterly to a point having Coordinates of X = 2,138,759.87 and Y = 256,594.43; thence South 10,961.50 feet to a point having Coordinates of X = 2,138,759.87 and Y = 245,632.93; thence West 18,480.00 feet to a point having Coordinates of X = 2,120,279.87 and Y = 245,632.93; thence North 7,603.81 to a point on the South line of State Lease No. 3475, as amended, having Coordinates of X = 2,120,279.87 and Y = 253,236.74; thence Easterly along the South line of said State Lease No. 3475 to its intersection with the most West Northwest corner of State Lease No. 17735 having Coordinates of X = 2,125,300.00 and Y = 253,311.99; thence along the boundary of said State Lease No. 17735 the following: South 2,661.99 feet to a point having Coordinates of X = 2,125,300.00 and Y = 250,650.00, East 2,650.00 feet to a point having Coordinates of X = 2,127,950.00 and Y = 250,650.00, North 1,380.00 feet to a point having Coordinates of X = 2,127,950.00 and Y = 252,030.00, East 2,650.00 feet to a point having Coordinates of X = 2,130,600.00 and Y = 252,030.00, North 1,380.00 feet to a point having Coordinates of X = 2,130,600.00 and Y = 253,410.00, East 1,385.00 feet to a point having Coordinates of X = 2,131,985.00 and Y = 253,410.00, North 5,282.79 feet to a point having Coordinates of X = 2,131,985.00 and Y = 258,692.79, and South 89 degrees 08 minutes 28 seconds West 3,610.73 feet to a point on the East boundary of State Lease No. 12105, as amended having Coordinates of X = 2,128,374.67 and Y = 258,638.67; thence Northerly on an arc having a radius of 1,000.00 feet and a center at X = 2,127,385.22 and Y = 258,783.55 to a point on the South line of State Lease No. 17601 having Coordinates of X = 2,128,384.99 and Y = 258,761.72; thence along the South boundary of said State Lease No. 17601 North 88 degrees 15 minutes 40 seconds East 7,343.18 feet to its Southeast corner and a point on the West boundary of State Lease No. 17602 having Coordinates of X = 2,135,724.78 and Y = 258,984.55; thence Southerly along the West boundary of said State Lease No. 17602 to the point of beginning, containing approximately **854.00 acres**, all as more particularly outlined on a plat on file in the Office of Mineral Resources, Department of Natural Resources. All bearings, distances and coordinates are based on Louisiana Coordinate System of 1927, (North or South Zone), where applicable.

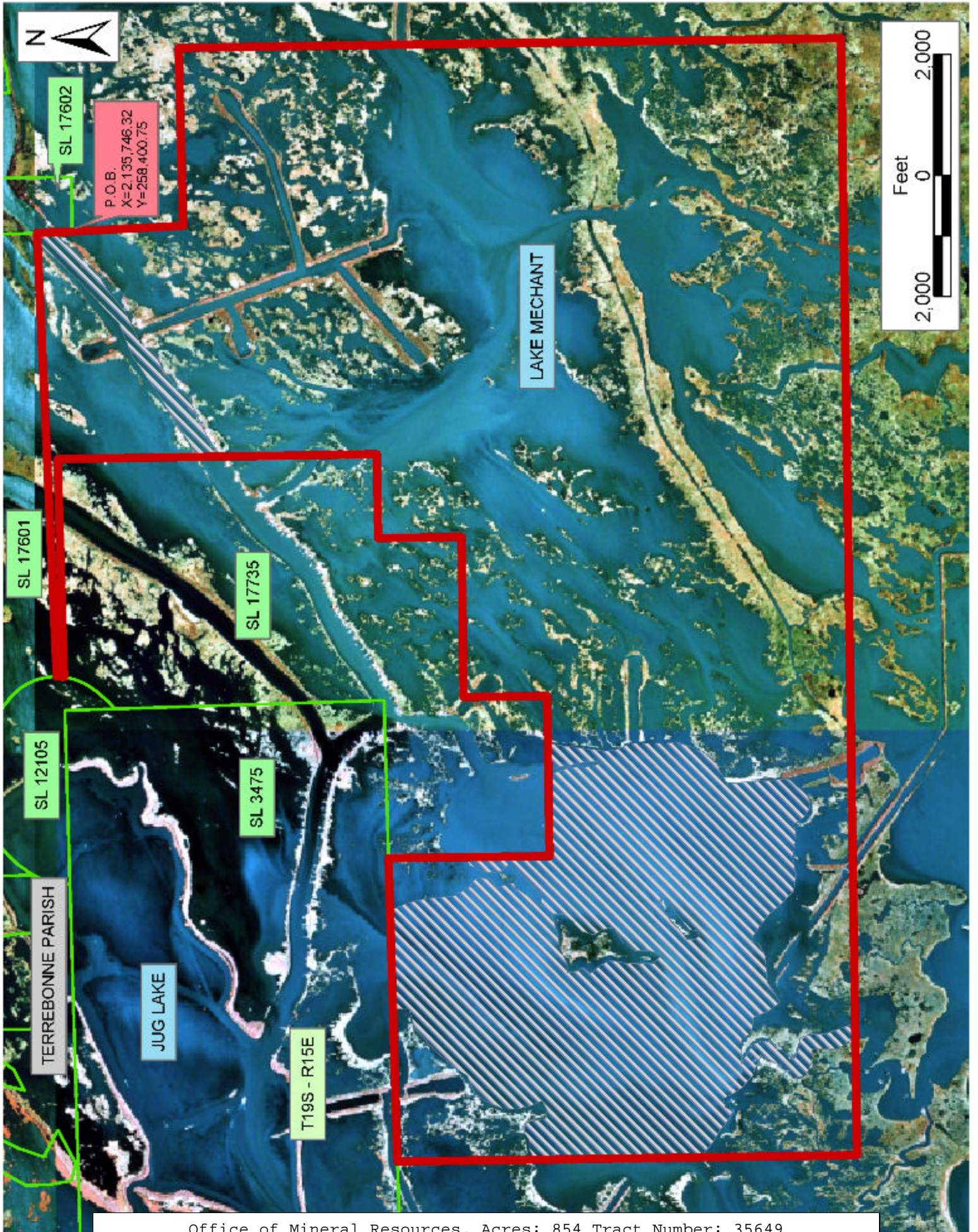
NOTE: The above description of the Tract nominated for lease has been provided and corrected, where required, exclusively by the nomination party. Any mineral lease selected from this Tract and awarded by the Louisiana State Mineral Board shall be without warranty of any kind,

either express, implied, or statutory, including, but not limited to, the implied warranties of merchantability and fitness for a particular purpose. Should the mineral lease awarded by the Louisiana State Mineral Board be subsequently modified, cancelled or abrogated due to the existence of conflicting leases, operating agreements, private claims or other future obligations or conditions which may affect all or any portion of the leased Tract, it shall not relieve the Lessee of the obligation to pay any bonus due thereon to the Louisiana State Mineral Board, nor shall the Louisiana State Mineral Board be obligated to refund any consideration paid by the Lessor prior to such modification, cancellation, or abrogation, including, but not limited to, bonuses, rentals and royalties.

NOTE: The State of Louisiana does hereby reserve, and this lease shall be subject to, the imprescriptible right of surface use in the nature of a servitude in favor of the Department of Natural Resources, including its Offices and Commissions, for the sole purpose of implementing, constructing, servicing and maintaining approved coastal zone management and/or restoration projects. Utilization of any and all rights derived under this lease by the mineral lessee, its agents, successors or assigns, shall not interfere with nor hinder the reasonable surface use by the Department of Natural Resources, its Offices or Commissions, as herein above reserved.

Applicant: Leslie L. Moore

Bidder	Cash Payment	Price/Acre	Rental	Oil	Gas	Other



TRACT 35650 - Terrebonne Parish, Louisiana

All of the lands now or formerly constituting the beds and bottoms of all water bodies of every nature and description the title of which vests in the State of Louisiana, together with all islands arising therein and other lands formed by accretion or by reliction, where allowed by law, excepting tax adjudicated lands, and not presently under mineral lease on September 10, 2003, situated in Terrebonne Parish, Louisiana, and more particularly described as follows: Beginning at the Northwest corner of State Lease No. 16446 having Coordinates of X = 2,216,569.91 and Y = 248,738.30; thence along the West boundary of said State Lease No. 16446 the following: South 44 degrees 43 minutes 08 seconds West 1,067.47 feet to a point having Coordinates of X = 2,215,818.81 and Y = 247,949.79, South 37 degrees 09 minutes 52 seconds West 1,082.77 feet to a point, South 41 degrees 03 minutes 00 seconds West 1,080.00 feet to a point, South 45 degrees 18 minutes 01 seconds West 1,126.87 feet to a point having Coordinates of X = 2,213,654.47 and Y = 245,509.83; thence South 40 degrees 19 minutes 29 seconds West 1,075.82 feet to a point, South 21 degrees 06 minutes 55 seconds West 965.12 feet to a point, South 06 degrees 40 minutes 40 seconds West 928.92 to a point having Coordinates of X = 2,212,502.59 and Y = 242,866.70 and South 07 degrees 50 minutes 37 seconds West 361.95 feet to a point having Coordinates of X = 2,212,453.20 and Y = 242,508.14; thence West 4,977.16 feet to a point having Coordinates of X = 2,207,476.04 and Y = 242,508.14; thence North 10,670.93 feet to a point having Coordinates of X = 2,207,476.04 and Y = 253,179.07; thence East 13,198.20 feet to a point having Coordinates of X = 2,220,674.24 and Y = 253,179.06; thence South 02 degrees 08 minutes 27 seconds East 2,339.08 feet to the Northwest corner of State Lease No. 15890, as amended, having Coordinates of X = 2,220,761.62 and Y = 250,841.62; thence along the West boundary of said State Lease No. 15890 South 10 degrees 48 minutes 00 seconds West 2,786.53 feet to its Southwest corner and a point on the North line of said State Lease No. 16446 having Coordinates of X = 2,220,239.48 and Y = 248,104.45; thence along the North line of said State Lease No. 16446 North 80 degrees 11 minutes 59 seconds West 3,723.91 feet to the point of beginning, containing approximately **1,620.00 acres**, all as more particularly outlined on a plat on file in the Office of Mineral Resources, Department of Natural Resources. All bearings, distances and coordinates are based on Louisiana Coordinate System of 1927, (North or South Zone), where applicable.

NOTE: The above description of the Tract nominated for lease has been provided and corrected, where required, exclusively by the nomination party. Any mineral lease selected from this Tract and awarded by the Louisiana State Mineral Board shall be without warranty of any kind, either express, implied, or statutory, including, but not limited to, the implied warranties of merchantability and fitness for a particular purpose. Should the mineral lease awarded by the Louisiana State Mineral Board be subsequently modified, cancelled or abrogated due to the existence of conflicting leases, operating agreements, private claims or other future obligations or conditions which may affect all or any portion

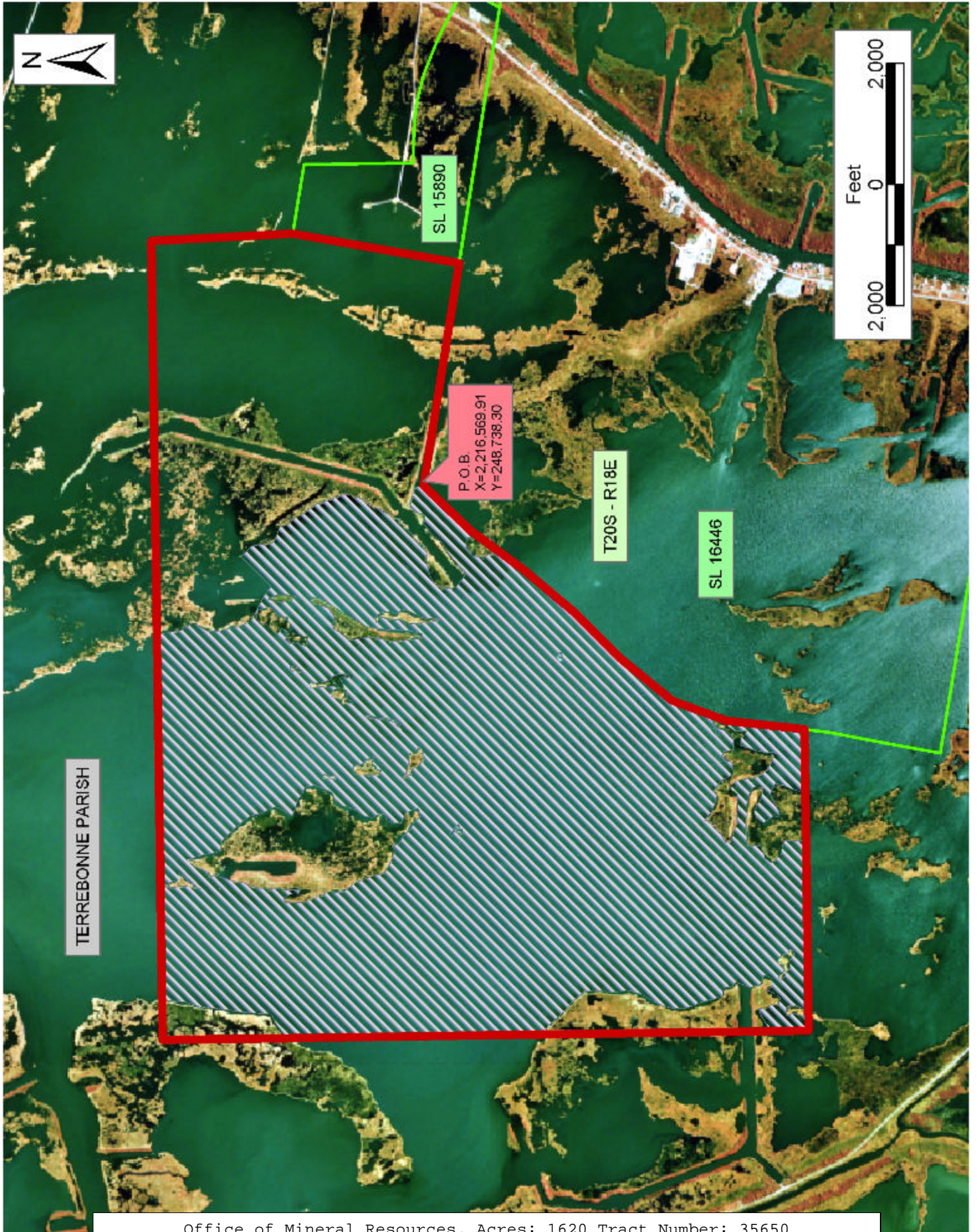
of the leased Tract, it shall not relieve the Lessee of the obligation to pay any bonus due thereon to the Louisiana State Mineral Board, nor shall the Louisiana State Mineral Board be obligated to refund any consideration paid by the Lessor prior to such modification, cancellation, or abrogation, including, but not limited to, bonuses, rentals and royalties.

NOTE: The State of Louisiana does hereby reserve, and this lease shall be subject to, the imprescriptible right of surface use in the nature of a servitude in favor of the Department of Natural Resources, including its Offices and Commissions, for the sole purpose of implementing, constructing, servicing and maintaining approved coastal zone management and/or restoration projects. Utilization of any and all rights derived under this lease by the mineral lessee, its agents, successors or assigns, shall not interfere with nor hinder the reasonable surface use by the Department of Natural Resources, its Offices or Commissions, as herein above reserved.

NOTE: The Department of Wildlife and Fisheries has designated certain areas in the coastal waters of the State of Louisiana as Oyster Seed Bed Areas. The exact location of those Seed Bed Areas must be obtained from the Department of Wildlife and Fisheries and any work done under a mineral lease from the State of Louisiana may necessarily be conducted in conformity with the rules and regulations promulgated by the said Department of Wildlife and Fisheries for Oyster Seed Bed Areas.

Applicant: Leslie L. Moore

Bidder	Cash Payment	Price/Acre	Rental	Oil	Gas	Other



TRACT 35651 - Portion of Block 7, West Delta Area, Plaquemines Parish, Louisiana

All of the lands now or formerly constituting the beds and bottoms of all water bodies of every nature and description the title of which vests in the State of Louisiana, together with all islands arising therein and other lands formed by accretion or by reliction, where allowed by law, excepting tax adjudicated lands, and not presently under mineral lease on September 10, 2003, situated in Plaquemines Parish, Louisiana, and more particularly described as follows: Beginning at a point on a line being an Eastern extension of the North boundary of Block 7, West Delta Area, having Coordinates of X = 2,533,646.90 and Y = 228,044.70; thence East 5,225.10 feet along said Eastern extension of Block 7 to an intersection point with the Northern extension of the East boundary line of said Block 7, having Coordinates of X = 2,538,872.00 and Y = 228,044.70; thence South 14,009.73 feet along said East boundary line of Block 7 to an intersection point on the Louisiana coastline having Coordinates of X = 2,538,872.00 and Y = 214,034.97; thence Southwesterly on a straight line along the said Louisiana coastline to a point having Coordinates of X = 2,533,646.90 and Y = 213,072.87; thence North 14,971.83 feet to the point of beginning, containing approximately **1,738.20 acres**, all as more particularly outlined on a plat on file in the Office of Mineral Resources, Department of Natural Resources. All bearings, distances and coordinates are based on Louisiana Coordinate System of 1927, (North or South Zone), where applicable.

NOTE: The above description of the Tract nominated for lease has been provided and corrected, where required, exclusively by the nomination party. Any mineral lease selected from this Tract and awarded by the Louisiana State Mineral Board shall be without warranty of any kind, either express, implied, or statutory, including, but not limited to, the implied warranties of merchantability and fitness for a particular purpose. Should the mineral lease awarded by the Louisiana State Mineral Board be subsequently modified, cancelled or abrogated due to the existence of conflicting leases, operating agreements, private claims or other future obligations or conditions which may affect all or any portion of the leased Tract, it shall not relieve the Lessee of the obligation to pay any bonus due thereon to the Louisiana State Mineral Board, nor shall the Louisiana State Mineral Board be obligated to refund any consideration paid by the Lessor prior to such modification, cancellation, or abrogation, including, but not limited to, bonuses, rentals and royalties.

NOTE: The State of Louisiana does hereby reserve, and this lease shall be subject to, the imprescriptible right of surface use in the nature of a servitude in favor of the Department of Natural Resources, including its Offices and Commissions, for the sole purpose of implementing, constructing, servicing and maintaining approved coastal zone management and/or restoration projects. Utilization of any and all rights derived under this lease by the mineral lessee, its agents, successors or assigns, shall not interfere with nor hinder the reasonable surface use by the

Department of Natural Resources, its Offices or Commissions, as herein above reserved.

NOTE: It appears, according to our records, that a portion of this Tract is located within the restrictive safety fairway area as set out by the Corps of Engineers, U.S. Army and/or the restrictive anchorage area as set out by the U.S. Coast Guard.

NOTE: The Department of Wildlife and Fisheries has designated certain areas in the coastal waters of the State of Louisiana as Oyster Seed Bed Areas. The exact location of those Seed Bed Areas must be obtained from the Department of Wildlife and Fisheries and any work done under a mineral lease from the State of Louisiana may necessarily be conducted in conformity with the rules and regulations promulgated by the said Department of Wildlife and Fisheries for Oyster Seed Bed Areas.

Applicant: S.R. Verret

Bidder	Cash Payment	Price/Acre	Rental	Oil	Gas	Other



S.L. 16152

P.O.B.
X=2,533,646.90
Y=228,044.70

BLOCK WD0003

WEST DELTA AREA

BLOCK WD0008

BLOCK WD0007

PLAQUEMINES PARISH

Coastline

BLOCK WD0006

BLOCK WD0007

BLOCK WD0006

