

**TRACT 35620 - Calcasieu and Jefferson Davis Parishes, Louisiana**

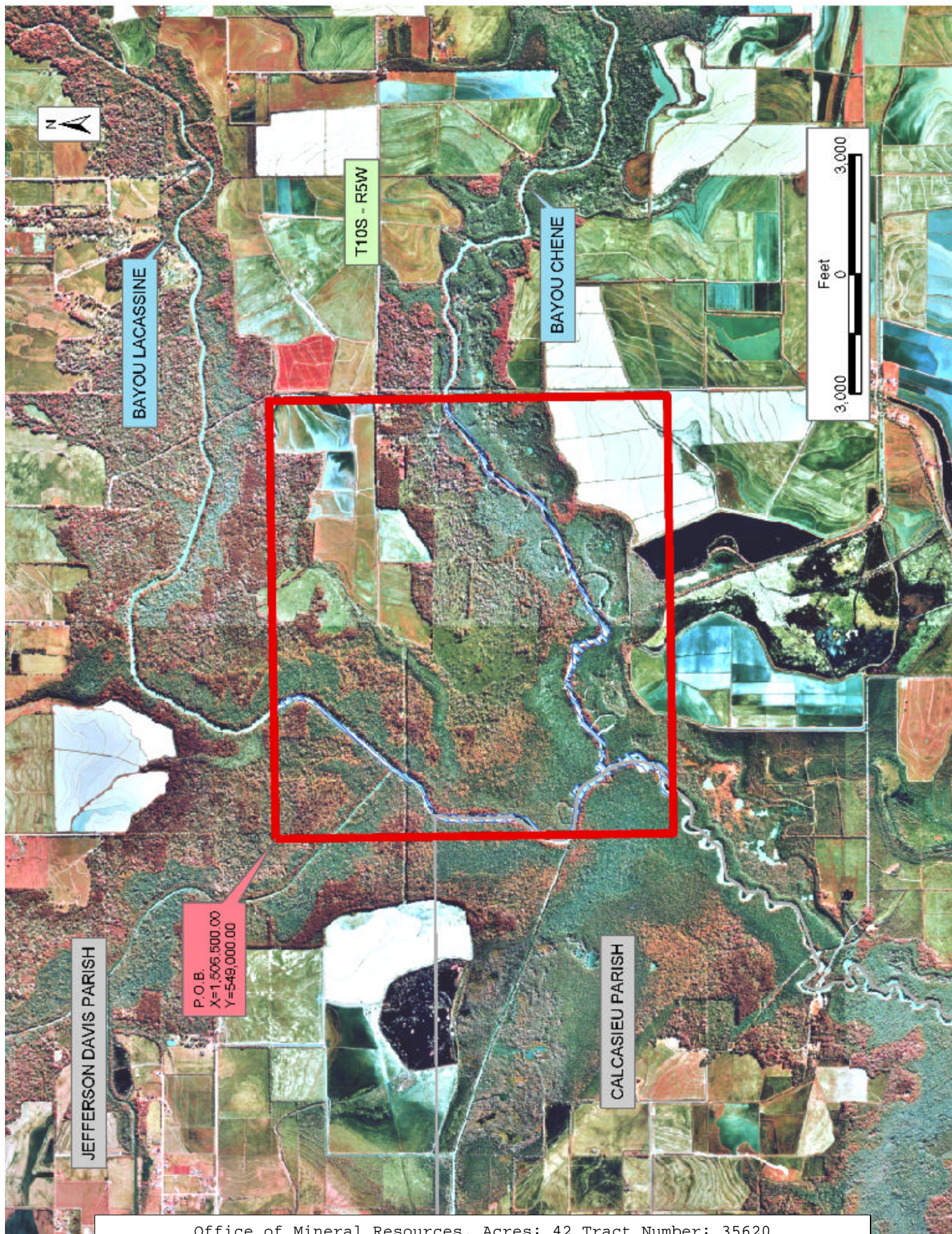
All of the lands now or formerly constituting the beds and bottoms of all water bodies of every nature and description the title of which vests in the State of Louisiana, together with all islands arising therein and other lands formed by accretion or by reliction, where allowed by law, excepting tax adjudicated lands, and not presently under mineral lease on September 10, 2003, situated in Calcasieu and Jefferson Davis Parishes, Louisiana, and more particularly described as follows: Beginning at a point having Coordinates of X = 1,506,500.00 and Y = 549,000.00; thence East 11,000.00 feet to a point having Coordinates of X = 1,517,500.00 and Y = 549,000.00; thence South 10,000.00 feet to a point having Coordinates of X = 1,517,500.00 and Y = 539,000.00; thence West 11,000.00 feet to a point having Coordinates of X = 1,506,500.00 and Y = 539,000.00; thence North 10,000.00 feet to the point of beginning, containing approximately **42 acres**, all as more particularly outlined on a plat on file in the Office of Mineral Resources, Department of Natural Resources. All bearings, distances and coordinates are based on Louisiana Coordinate System of 1927, (North or South Zone), where applicable.

NOTE: The above description of the Tract nominated for lease has been provided and corrected, where required, exclusively by the nomination party. Any mineral lease selected from this Tract and awarded by the Louisiana State Mineral Board shall be without warranty of any kind, either express, implied, or statutory, including, but not limited to, the implied warranties of merchantability and fitness for a particular purpose. Should the mineral lease awarded by the Louisiana State Mineral Board be subsequently modified, cancelled or abrogated due to the existence of conflicting leases, operating agreements, private claims or other future obligations or conditions which may affect all or any portion of the leased Tract, it shall not relieve the Lessee of the obligation to pay any bonus due thereon to the Louisiana State Mineral Board, nor shall the Louisiana State Mineral Board be obligated to refund any consideration paid by the Lessor prior to such modification, cancellation, or abrogation, including, but not limited to, bonuses, rentals and royalties.

Applicant: Theophilus Oil Gas & Land Services, LLC.

Bidder	Cash Payment	Price/ Acre	Rental	Oil	Gas	Other







**TRACT 35621 - Jefferson Davis Parish, Louisiana**

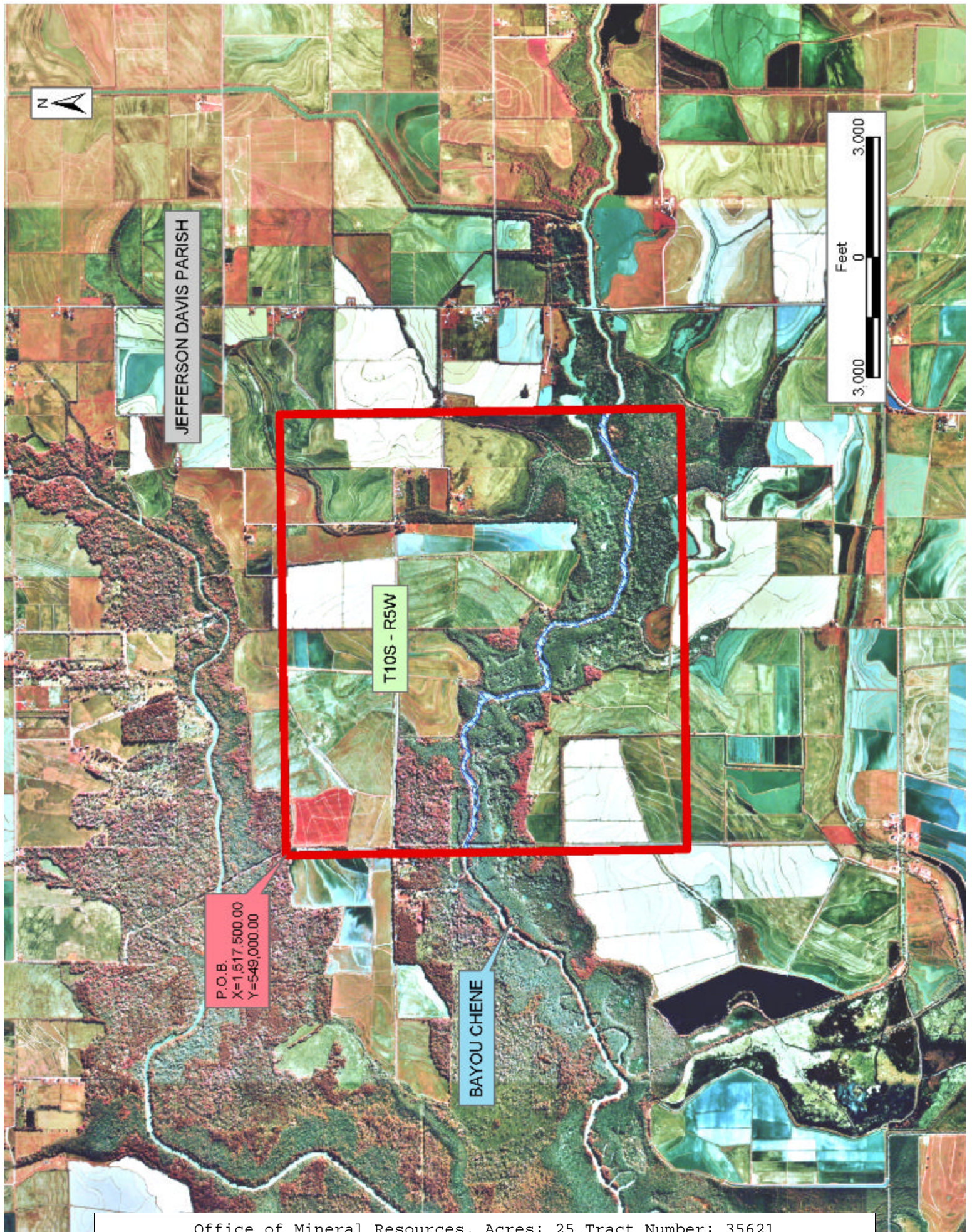
All of the lands now or formerly constituting the beds and bottoms of all water bodies of every nature and description the title of which vests in the State of Louisiana, together with all islands arising therein and other lands formed by accretion or by reliction, where allowed by law, excepting tax adjudicated lands, and not presently under mineral lease on September 10, 2003, situated in Jefferson Davis Parish, Louisiana, and more particularly described as follows: Beginning at a point having Coordinates of X = 1,517,500.00 and Y = 549,000.00; thence East 11,000.00 feet to a point having Coordinates of X = 1,528,500.00 and Y = 549,000.00; thence South 10,000.00 feet to a point having Coordinates of X = 1,528,500.00 and Y = 539,000.00; thence West 11,000.00 feet to a point having Coordinates of X = 1,517,500.00 and Y = 539,000.00; thence North 10,000.00 feet to the point of beginning, containing approximately **25 acres**, all as more particularly outlined on a plat on file in the Office of Mineral Resources, Department of Natural Resources. All bearings, distances and coordinates are based on Louisiana Coordinate System of 1927, (North or South Zone), where applicable.

NOTE: The above description of the Tract nominated for lease has been provided and corrected, where required, exclusively by the nomination party. Any mineral lease selected from this Tract and awarded by the Louisiana State Mineral Board shall be without warranty of any kind, either express, implied, or statutory, including, but not limited to, the implied warranties of merchantability and fitness for a particular purpose. Should the mineral lease awarded by the Louisiana State Mineral Board be subsequently modified, cancelled or abrogated due to the existence of conflicting leases, operating agreements, private claims or other future obligations or conditions which may affect all or any portion of the leased Tract, it shall not relieve the Lessee of the obligation to pay any bonus due thereon to the Louisiana State Mineral Board, nor shall the Louisiana State Mineral Board be obligated to refund any consideration paid by the Lessor prior to such modification, cancellation, or abrogation, including, but not limited to, bonuses, rentals and royalties.

Applicant: Theophilus Oil Gas & Land Services, LLC

Bidder	Cash Payment	Price/ Acre	Rental	Oil	Gas	Other







**TRACT 35622 - Jefferson Davis Parish, Louisiana**

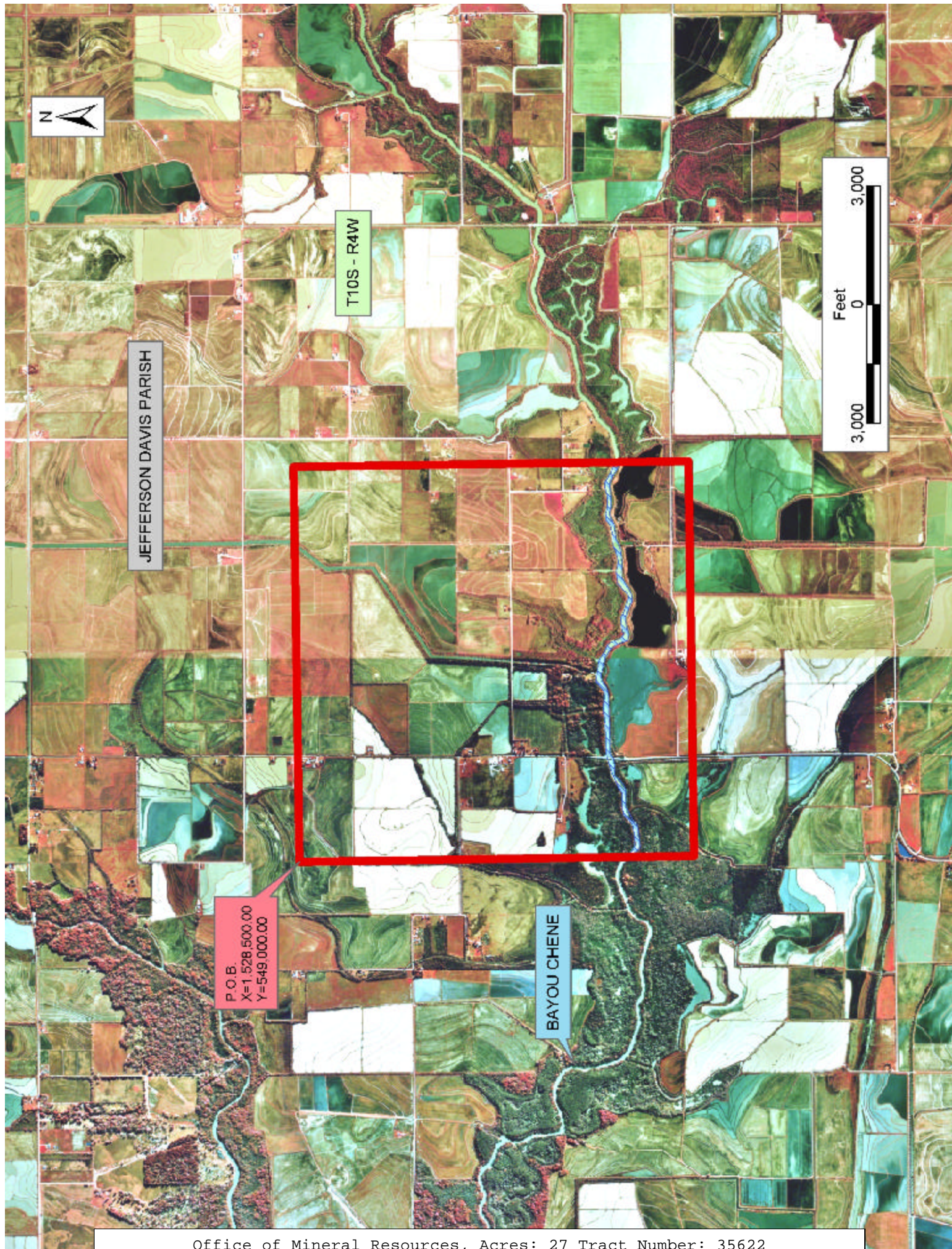
All of the lands now or formerly constituting the beds and bottoms of all water bodies of every nature and description the title of which vests in the State of Louisiana, together with all islands arising therein and other lands formed by accretion or by reliction, where allowed by law, excepting tax adjudicated lands, and not presently under mineral lease on September 10, 2003, situated in Jefferson Davis Parish, Louisiana, and more particularly described as follows: Beginning at a point having Coordinates of X = 1,528,500.00 and Y = 549,000.00; thence East 10,000.00 feet to a point having Coordinates of X = 1,538,500.00 and Y = 549,000.00; thence South 10,000.00 feet to a point having Coordinates of X = 1,538,500.00 and Y = 539,000.00; thence West 10,000.00 feet to a point having Coordinates of X = 1,528,500.00 and Y = 539,000.00; thence North 10,000.00 feet to the point of beginning, containing approximately **27 acres**, all as more particularly outlined on a plat on file in the Office of Mineral Resources, Department of Natural Resources. All bearings, distances and coordinates are based on Louisiana Coordinate System of 1927, (North or South Zone), where applicable.

NOTE: The above description of the Tract nominated for lease has been provided and corrected, where required, exclusively by the nomination party. Any mineral lease selected from this Tract and awarded by the Louisiana State Mineral Board shall be without warranty of any kind, either express, implied, or statutory, including, but not limited to, the implied warranties of merchantability and fitness for a particular purpose. Should the mineral lease awarded by the Louisiana State Mineral Board be subsequently modified, cancelled or abrogated due to the existence of conflicting leases, operating agreements, private claims or other future obligations or conditions which may affect all or any portion of the leased Tract, it shall not relieve the Lessee of the obligation to pay any bonus due thereon to the Louisiana State Mineral Board, nor shall the Louisiana State Mineral Board be obligated to refund any consideration paid by the Lessor prior to such modification, cancellation, or abrogation, including, but not limited to, bonuses, rentals and royalties.

Applicant: Theophilus Oil Gas & Land Services, LLC

Bidder	Cash Payment	Price/Acre	Rental	Oil	Gas	Other







**TRACT 35623 - Jefferson Davis Parish, Louisiana**

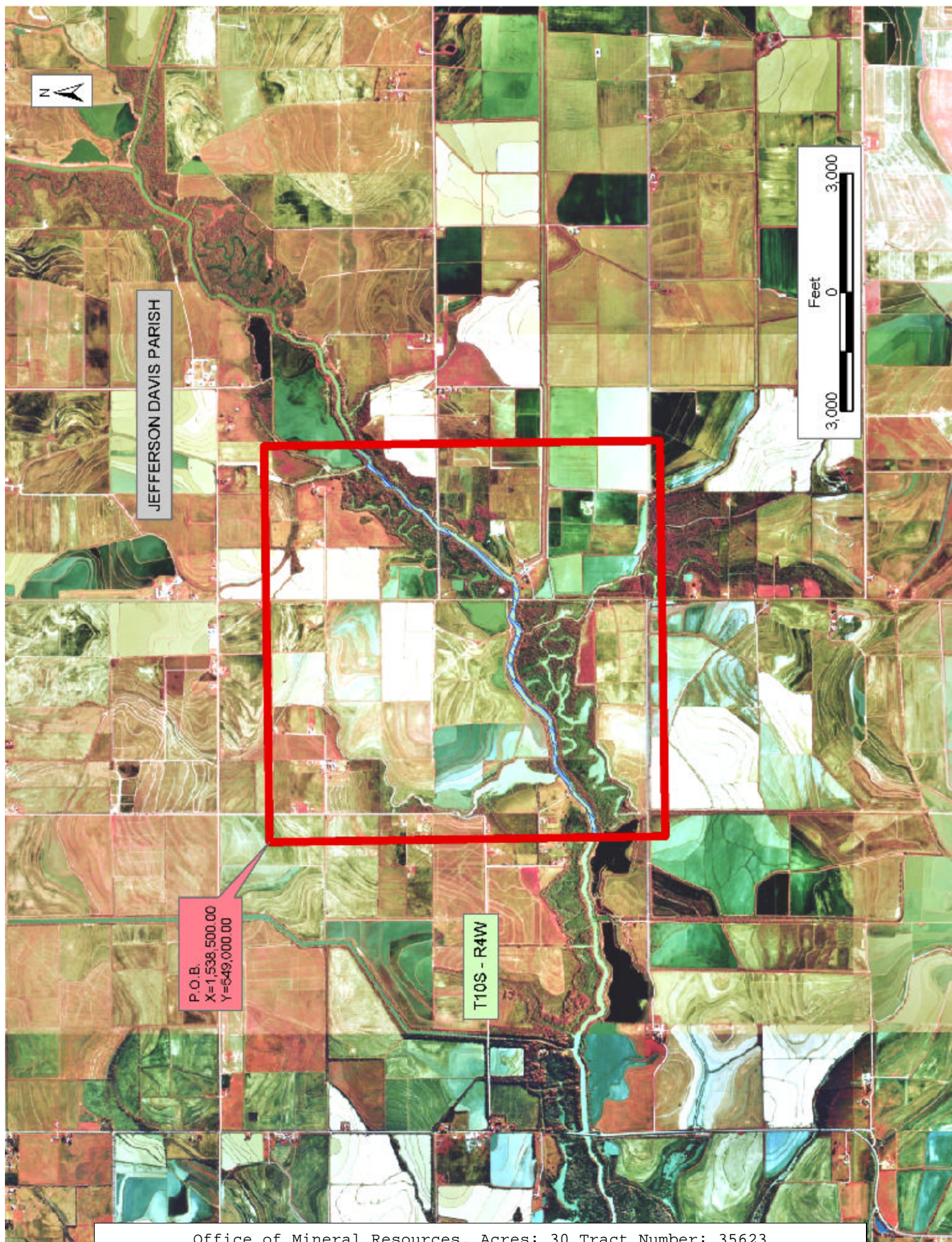
All of the lands now or formerly constituting the beds and bottoms of all water bodies of every nature and description the title of which vests in the State of Louisiana, together with all islands arising therein and other lands formed by accretion or by reliction, where allowed by law, excepting tax adjudicated lands, and not presently under mineral lease on September 10, 2003, situated in Jefferson Davis Parish, Louisiana, and more particularly described as follows: Beginning at a point having Coordinates of X = 1,538,500.00 and Y = 549,000.00; thence East 10,000.00 feet to a point having Coordinates of X = 1,548,500.00 and Y = 549,000.00; thence South 10,000.00 feet to a point having Coordinates of X = 1,548,500.00 and Y = 539,000.00; thence West 10,000.00 feet to a point having Coordinates of X = 1,538,500.00 and Y = 539,000.00; thence North 10,000.00 feet to the point of beginning, containing approximately **30 acres**, all as more particularly outlined on a plat on file in the Office of Mineral Resources, Department of Natural Resources. All bearings, distances and coordinates are based on Louisiana Coordinate System of 1927, (North or South Zone), where applicable.

NOTE: The above description of the Tract nominated for lease has been provided and corrected, where required, exclusively by the nomination party. Any mineral lease selected from this Tract and awarded by the Louisiana State Mineral Board shall be without warranty of any kind, either express, implied, or statutory, including, but not limited to, the implied warranties of merchantability and fitness for a particular purpose. Should the mineral lease awarded by the Louisiana State Mineral Board be subsequently modified, cancelled or abrogated due to the existence of conflicting leases, operating agreements, private claims or other future obligations or conditions which may affect all or any portion of the leased Tract, it shall not relieve the Lessee of the obligation to pay any bonus due thereon to the Louisiana State Mineral Board, nor shall the Louisiana State Mineral Board be obligated to refund any consideration paid by the Lessor prior to such modification, cancellation, or abrogation, including, but not limited to, bonuses, rentals and royalties.

Applicant: Theophilus Oil Gas & Land Services, LLC.

Bidder	Cash Payment	Price/ Acre	Rental	Oil	Gas	Other







**TRACT 35624 - Calcasieu and Jefferson Davis Parishes, Louisiana**

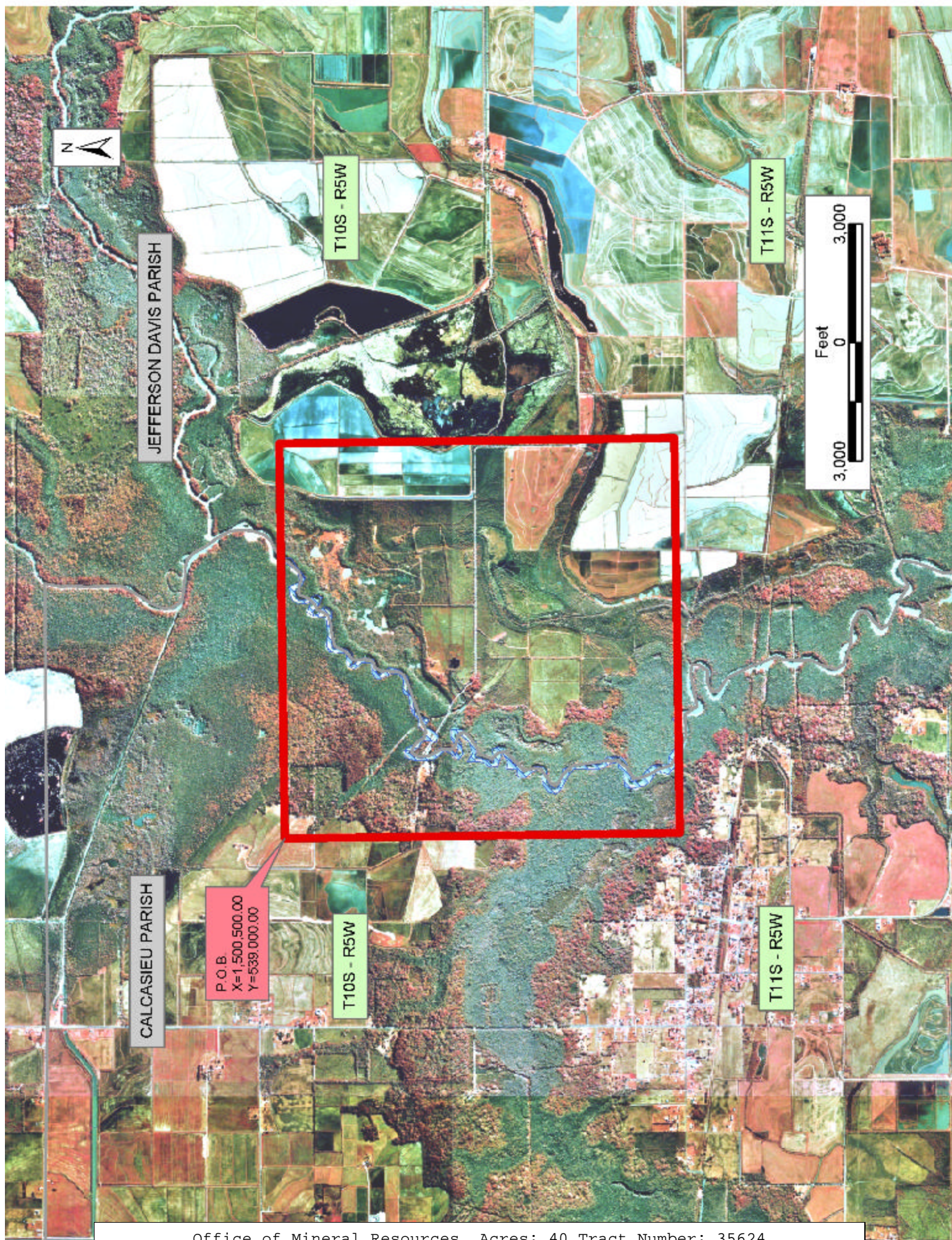
All of the lands now or formerly constituting the beds and bottoms of all water bodies of every nature and description the title of which vests in the State of Louisiana, together with all islands arising therein and other lands formed by accretion or by reliction, where allowed by law, excepting tax adjudicated lands, and not presently under mineral lease on September 10, 2003, situated in Calcasieu and Jefferson Davis Parishes, Louisiana, and more particularly described as follows: Beginning at a point having Coordinates of X = 1,500,500.00 and Y = 539,000.00; thence East 10,000.00 feet to a point having Coordinates of X = 1,510,500.00 and Y = 539,000.00; thence South 10,000.00 feet to a point having Coordinates of X = 1,510,500.00 and Y = 529,000.00; thence West 10,000.00 feet to a point having Coordinates of X = 1,500,500.00 and Y = 529,000.00; thence North 10,000.00 feet to the point of beginning, containing approximately **40 acres**, all as more particularly outlined on a plat on file in the Office of Mineral Resources, Department of Natural Resources. All bearings, distances and coordinates are based on Louisiana Coordinate System of 1927, (North or South Zone), where applicable.

NOTE: The above description of the Tract nominated for lease has been provided and corrected, where required, exclusively by the nomination party. Any mineral lease selected from this Tract and awarded by the Louisiana State Mineral Board shall be without warranty of any kind, either express, implied, or statutory, including, but not limited to, the implied warranties of merchantability and fitness for a particular purpose. Should the mineral lease awarded by the Louisiana State Mineral Board be subsequently modified, cancelled or abrogated due to the existence of conflicting leases, operating agreements, private claims or other future obligations or conditions which may affect all or any portion of the leased Tract, it shall not relieve the Lessee of the obligation to pay any bonus due thereon to the Louisiana State Mineral Board, nor shall the Louisiana State Mineral Board be obligated to refund any consideration paid by the Lessor prior to such modification, cancellation, or abrogation, including, but not limited to, bonuses, rentals and royalties.

Applicant: Theophilus Oil Gas & Land Services, LLC.

Bidder	Cash Payment	Price/ Acre	Rental	Oil	Gas	Other







**TRACT 35625 - St. Charles and St. John The Baptist Parishes, Louisiana**

All of the lands now or formerly constituting the beds and bottoms of all water bodies of every nature and description the title of which vests in the State of Louisiana, together with all islands arising therein and other lands formed by accretion or by reliction, where allowed by law, excepting tax adjudicated lands, and not presently under mineral lease on September 10, 2003, situated in St. Charles and St. John The Baptist Parishes, Louisiana, and more particularly described as follows: Beginning at a point having Coordinates of X = 2,236,990.00 and Y = 465,680.00; thence North 1,620.00 feet to a point having Coordinates of X = 2,236,990.00 and Y = 467,300.00; thence North 18 degrees 40 minutes 04 seconds East 8,560.36 feet to a point having Coordinates of X = 2,239,730.00 and Y = 475,410.00; thence North 53 degrees 54 minutes 20 seconds East 2,512.23 feet to a point having Coordinates of X = 2,241,760.00 and Y = 476,890.00; thence North 87 degrees 49 minutes 09 seconds East 7,095.14 feet to a point having Coordinates of X = 2,248,850.00 and Y = 477,160.00; thence South 25 degrees 09 minutes 26 seconds East 7,645.19 feet to a point having Coordinates of X = 2,252,100.00 and Y = 470,240.00; thence South 4,560.00 feet to a point having Coordinates of X = 2,252,100.00 and Y = 465,680.00; thence West 15,110.00 feet to the point of beginning, containing approximately **2,179 acres**, all as more particularly outlined on a plat on file in the Office of Mineral Resources, Department of Natural Resources. All bearings, distances and coordinates are based on Louisiana Coordinate System of 1927, (North or South Zone), where applicable.

NOTE: The above description of the Tract nominated for lease has been provided and corrected, where required, exclusively by the nomination party. Any mineral lease selected from this Tract and awarded by the Louisiana State Mineral Board shall be without warranty of any kind, either express, implied, or statutory, including, but not limited to, the implied warranties of merchantability and fitness for a particular purpose. Should the mineral lease awarded by the Louisiana State Mineral Board be subsequently modified, cancelled or abrogated due to the existence of conflicting leases, operating agreements, private claims or other future obligations or conditions which may affect all or any portion of the leased Tract, it shall not relieve the Lessee of the obligation to pay any bonus due thereon to the Louisiana State Mineral Board, nor shall the Louisiana State Mineral Board be obligated to refund any consideration paid by the Lessor prior to such modification, cancellation, or abrogation, including, but not limited to, bonuses, rentals and royalties.

NOTE: The State of Louisiana does hereby reserve, and this lease shall be subject to, the imprescriptible right of surface use in the nature of a servitude in favor of the Department of Natural Resources, including its Offices and Commissions, for the sole purpose of implementing, constructing, servicing and maintaining approved coastal zone management and/or restoration projects. Utilization of any and all rights derived under this lease by the mineral lessee, its agents, successors or assigns,

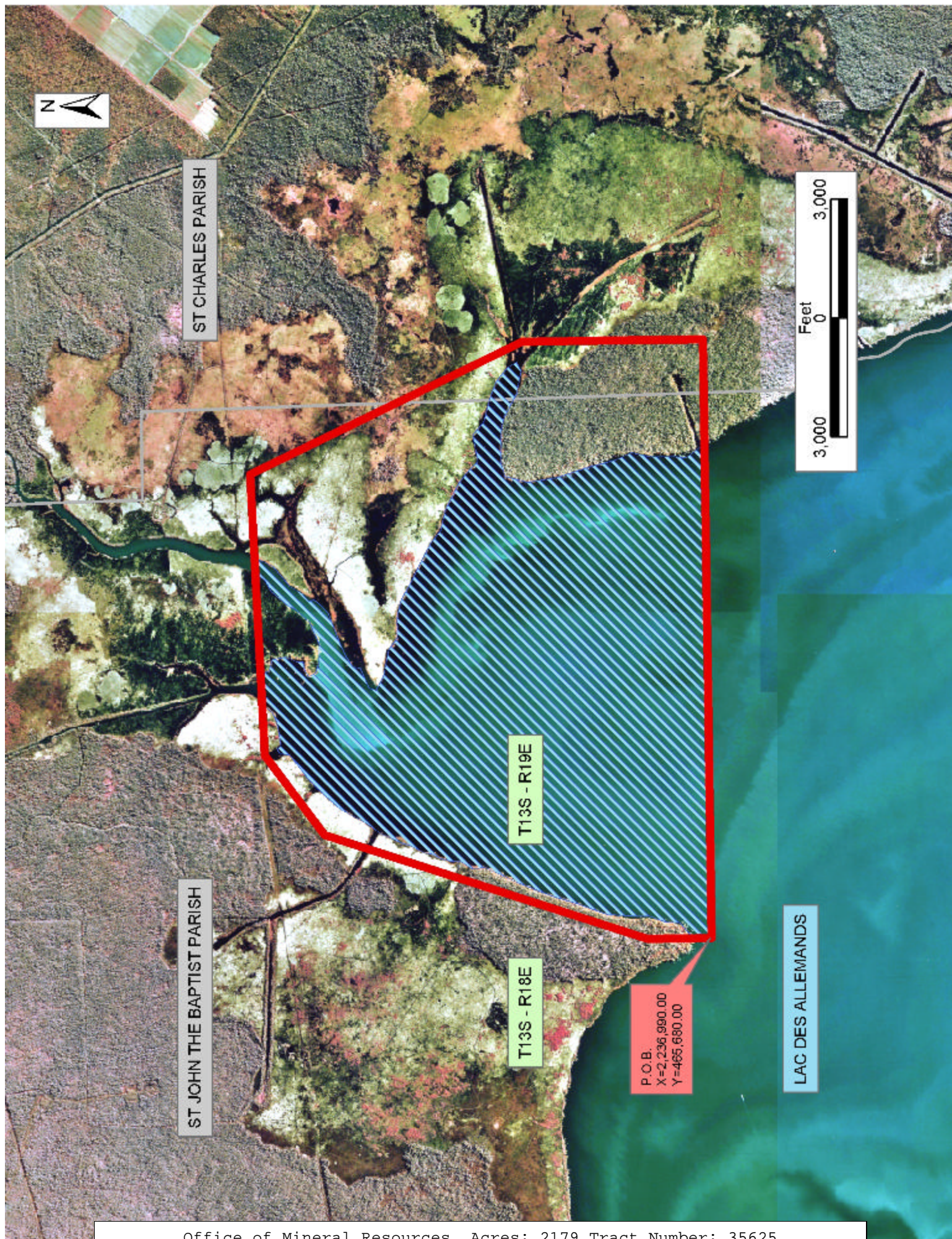


shall not interfere with nor hinder the reasonable surface use by the Department of Natural Resources, its Offices or Commissions, as herein above reserved.

Applicant: Doyle Land Services, Inc.

Bidder	Cash Payment	Price/ Acre	Rental	Oil	Gas	Other







**TRACT 35626 - St. Charles and St. John The Baptist Parishes, Louisiana**

All of the lands now or formerly constituting the beds and bottoms of all water bodies of every nature and description the title of which vests in the State of Louisiana, together with all islands arising therein and other lands formed by accretion or by reliction, where allowed by law, excepting tax adjudicated lands, and not presently under mineral lease on September 10, 2003, situated in St. Charles and St. John The Baptist Parishes, Louisiana, and more particularly described as follows: Beginning at a point having Coordinates of X = 2,236,990.00 and Y = 458,250.00; thence North 7,430.00 feet to a point having Coordinates of X = 2,236,990.00 and Y = 465,680.00; thence East 15,110.00 feet to a point having Coordinates of X = 2,252,100.00 and Y = 465,680.00; thence South 10 degrees 17 minutes 53 seconds East 7,551.65 feet to a point having Coordinates of X = 2,253,450.00 and Y = 458,250.00; thence West 16,460.00 feet to the point of beginning, containing approximately **2,473 acres**, all as more particularly outlined on a plat on file in the Office of Mineral Resources, Department of Natural Resources. All bearings, distances and coordinates are based on Louisiana Coordinate System of 1927, (North or South Zone), where applicable.

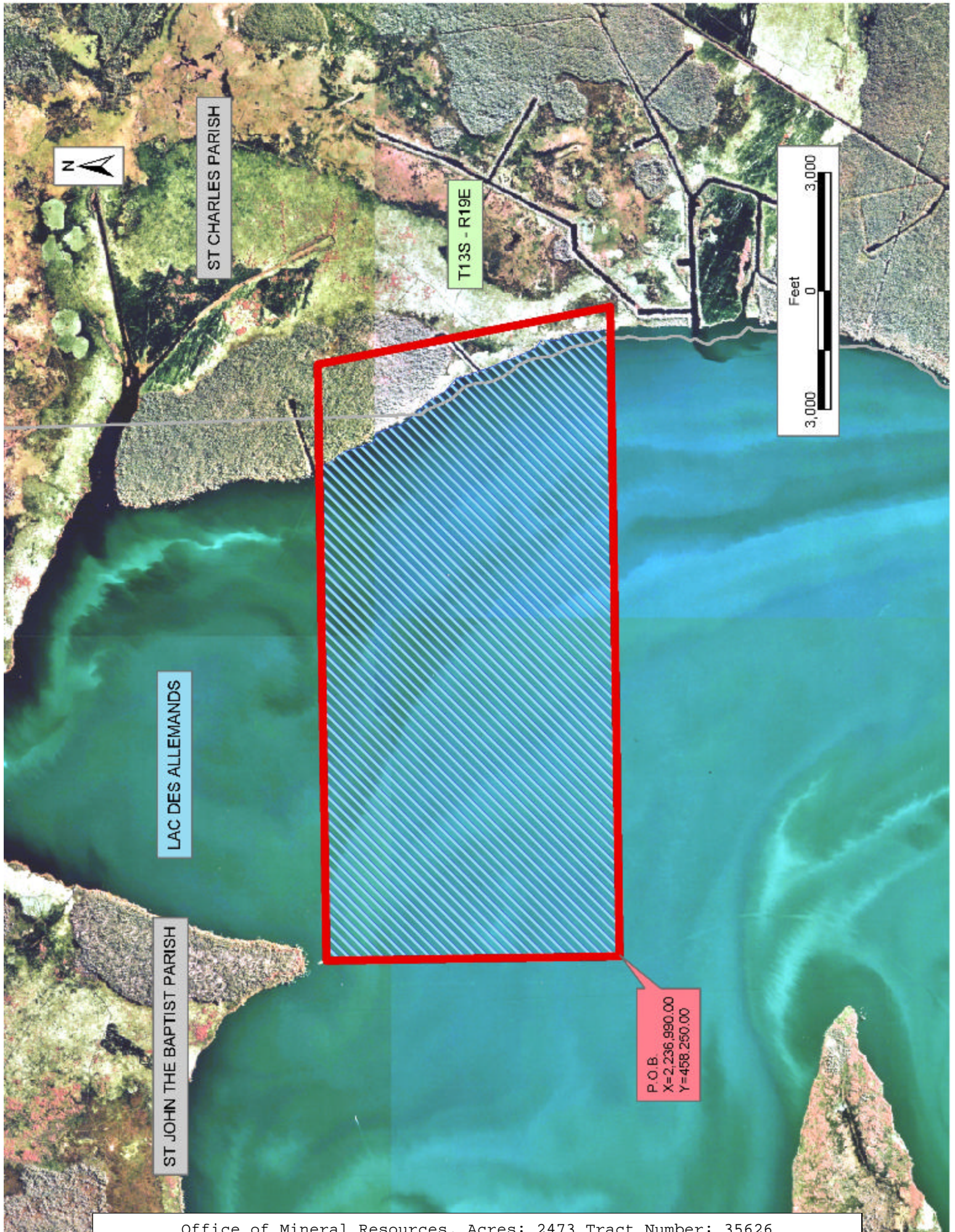
NOTE: The above description of the Tract nominated for lease has been provided and corrected, where required, exclusively by the nomination party. Any mineral lease selected from this Tract and awarded by the Louisiana State Mineral Board shall be without warranty of any kind, either express, implied, or statutory, including, but not limited to, the implied warranties of merchantability and fitness for a particular purpose. Should the mineral lease awarded by the Louisiana State Mineral Board be subsequently modified, cancelled or abrogated due to the existence of conflicting leases, operating agreements, private claims or other future obligations or conditions which may affect all or any portion of the leased Tract, it shall not relieve the Lessee of the obligation to pay any bonus due thereon to the Louisiana State Mineral Board, nor shall the Louisiana State Mineral Board be obligated to refund any consideration paid by the Lessor prior to such modification, cancellation, or abrogation, including, but not limited to, bonuses, rentals and royalties.

NOTE: The State of Louisiana does hereby reserve, and this lease shall be subject to, the imprescriptible right of surface use in the nature of a servitude in favor of the Department of Natural Resources, including its Offices and Commissions, for the sole purpose of implementing, constructing, servicing and maintaining approved coastal zone management and/or restoration projects. Utilization of any and all rights derived under this lease by the mineral lessee, its agents, successors or assigns, shall not interfere with nor hinder the reasonable surface use by the Department of Natural Resources, its Offices or Commissions, as herein above reserved.

Applicant: Doyle Land Services, Inc.

Bidder	Cash Payment	Price/ Acre	Rental	Oil	Gas	Other







**TRACT 35627 - St. Charles and St. John The Baptist Parishes, Louisiana**

All of the lands now or formerly constituting the beds and bottoms of all water bodies of every nature and description the title of which vests in the State of Louisiana, together with all islands arising therein and other lands formed by accretion or by reliction, where allowed by law, excepting tax adjudicated lands, and not presently under mineral lease on September 10, 2003, situated in St. Charles and St. John The Baptist Parishes, Louisiana, and more particularly described as follows: Beginning at a point having Coordinates of X = 2,236,990.00 and Y = 458,250.00; thence East 16,460.00 feet to a point having Coordinates of X = 2,253,450.00 and Y = 458,250.00; thence South 03 degrees 09 minutes 03 seconds West 6,549.90 feet to a point having Coordinates of X = 2,253,090.00 and Y = 451,710.00; thence West 16,100.00 feet to a point having Coordinates of X = 2,236,990.00 and Y = 451,710.00; thence North 6,540.00 feet to the point of beginning, containing approximately **2,388 acres**, all as more particularly outlined on a plat on file in the Office of Mineral Resources, Department of Natural Resources. All bearings, distances and coordinates are based on Louisiana Coordinate System of 1927, (North or South Zone), where applicable.

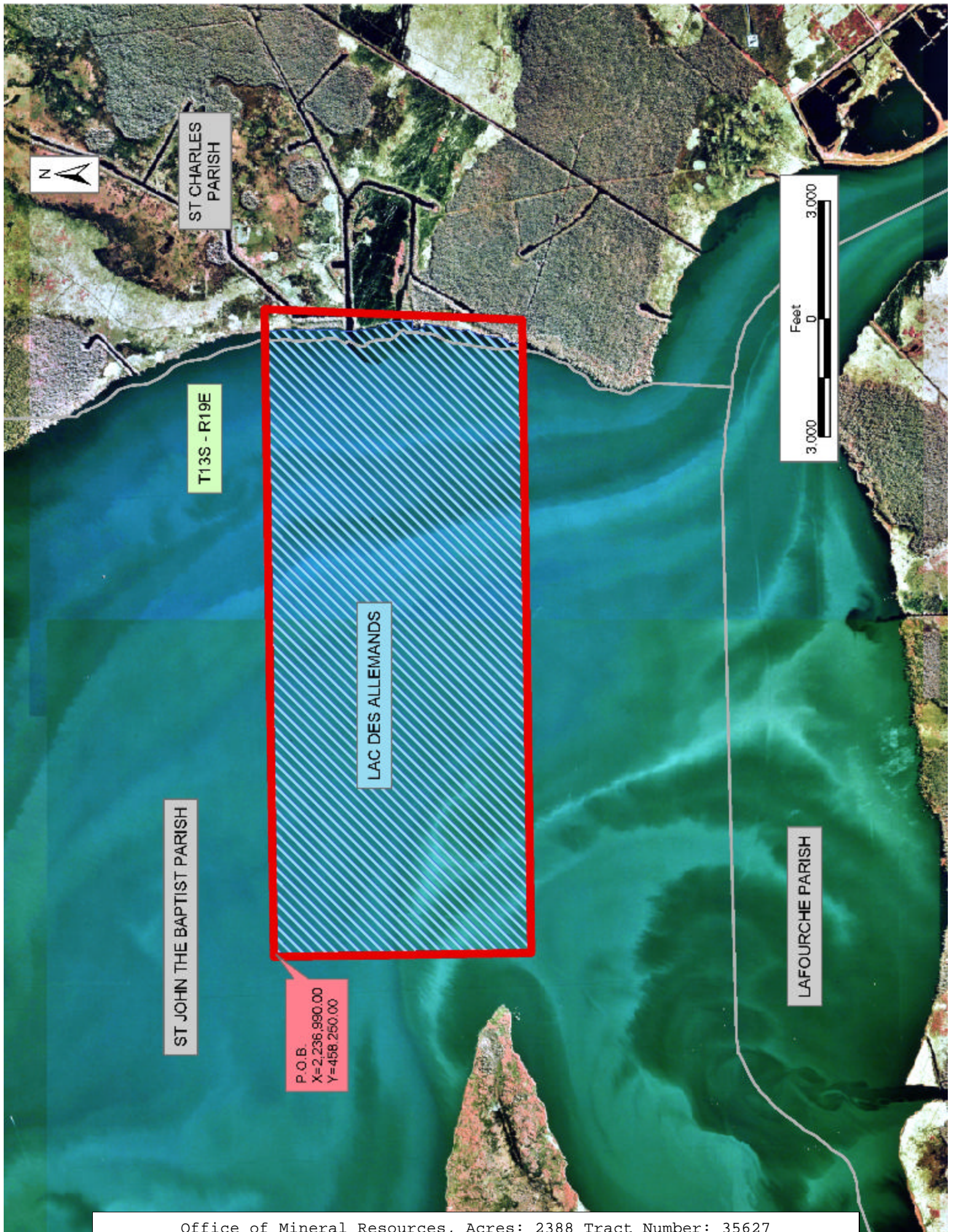
NOTE: The above description of the Tract nominated for lease has been provided and corrected, where required, exclusively by the nomination party. Any mineral lease selected from this Tract and awarded by the Louisiana State Mineral Board shall be without warranty of any kind, either express, implied, or statutory, including, but not limited to, the implied warranties of merchantability and fitness for a particular purpose. Should the mineral lease awarded by the Louisiana State Mineral Board be subsequently modified, cancelled or abrogated due to the existence of conflicting leases, operating agreements, private claims or other future obligations or conditions which may affect all or any portion of the leased Tract, it shall not relieve the Lessee of the obligation to pay any bonus due thereon to the Louisiana State Mineral Board, nor shall the Louisiana State Mineral Board be obligated to refund any consideration paid by the Lessor prior to such modification, cancellation, or abrogation, including, but not limited to, bonuses, rentals and royalties.

NOTE: The State of Louisiana does hereby reserve, and this lease shall be subject to, the imprescriptible right of surface use in the nature of a servitude in favor of the Department of Natural Resources, including its Offices and Commissions, for the sole purpose of implementing, constructing, servicing and maintaining approved coastal zone management and/or restoration projects. Utilization of any and all rights derived under this lease by the mineral lessee, its agents, successors or assigns, shall not interfere with nor hinder the reasonable surface use by the Department of Natural Resources, its Offices or Commissions, as herein above reserved.



Applicant: Doyle Land Services, Inc.

Bidder	Cash Payment	Price/ Acre	Rental	Oil	Gas	Other





**TRACT 35628 - Lafourche, St. Charles and St. John The Baptist Parishes, Louisiana**

All of the lands now or formerly constituting the beds and bottoms of all water bodies of every nature and description the title of which vests in the State of Louisiana, together with all islands arising therein and other lands formed by accretion or by reliction, where allowed by law, excepting tax adjudicated lands, and not presently under mineral lease on September 10, 2003, situated in Lafourche, St. Charles and St. John The Baptist Parishes, Louisiana, and more particularly described as follows: Beginning at a point having Coordinates of X = 2,234,610.00 and Y = 446,450.00; thence North 5,260.00 feet to a point having Coordinates of X = 2,234,610.00 and Y = 451,710.00; thence East 18,480.00 feet to a point having Coordinates of X = 2,253,090.00 and Y = 451,710.00; thence South 5,260.00 feet to a point having Coordinates of X = 2,253,090.00 and Y = 446,450.00; thence West 18,480.00 feet to the point of beginning, containing approximately **2,130 acres**, all as more particularly outlined on a plat on file in the Office of Mineral Resources, Department of Natural Resources. All bearings, distances and coordinates are based on Louisiana Coordinate System of 1927, (North or South Zone), where applicable.

NOTE: The above description of the Tract nominated for lease has been provided and corrected, where required, exclusively by the nomination party. Any mineral lease selected from this Tract and awarded by the Louisiana State Mineral Board shall be without warranty of any kind, either express, implied, or statutory, including, but not limited to, the implied warranties of merchantability and fitness for a particular purpose. Should the mineral lease awarded by the Louisiana State Mineral Board be subsequently modified, cancelled or abrogated due to the existence of conflicting leases, operating agreements, private claims or other future obligations or conditions which may affect all or any portion of the leased Tract, it shall not relieve the Lessee of the obligation to pay any bonus due thereon to the Louisiana State Mineral Board, nor shall the Louisiana State Mineral Board be obligated to refund any consideration paid by the Lessor prior to such modification, cancellation, or abrogation, including, but not limited to, bonuses, rentals and royalties.

NOTE: The above Tract is located upon a restricted scenic river and all operations in this area must be conducted in strict conformity with the regulations of the Corps of Engineers, U.S. Army.

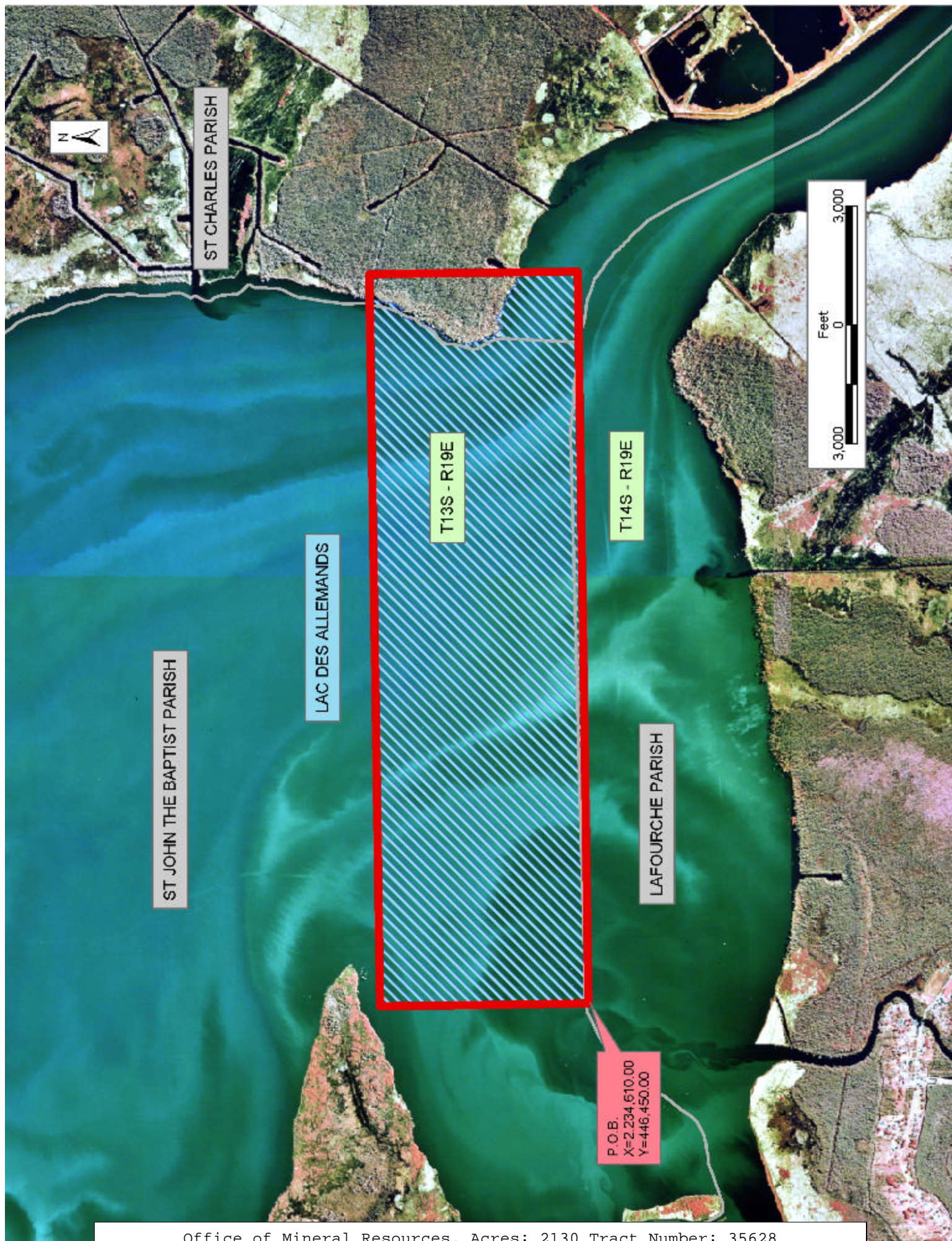
NOTE: The State of Louisiana does hereby reserve, and this lease shall be subject to, the imprescriptible right of surface use in the nature of a servitude in favor of the Department of Natural Resources, including its Offices and Commissions, for the sole purpose of implementing, constructing, servicing and maintaining approved coastal zone management and/or restoration projects. Utilization of any and all rights derived under this lease by the mineral lessee, its agents, successors or assigns, shall not interfere with nor hinder the reasonable surface use by the

Department of Natural Resources, its Offices or Commissions, as herein above reserved.

Applicant: Doyle Land Services, Inc.

Bidder	Cash Payment	Price/ Acre	Rental	Oil	Gas	Other







**TRACT 35629 - Jefferson and St. Charles Parishes, Louisiana**

All of the lands now or formerly constituting the beds and bottoms of all water bodies of every nature and description the title of which vests in the State of Louisiana, together with all islands arising therein and other lands formed by accretion or by reliction, where allowed by law, excepting tax adjudicated lands, and not presently under mineral lease on September 10, 2003, situated in Jefferson and St. Charles Parishes, Louisiana, and more particularly described as follows: Beginning at the Easternmost Northeast corner of State Lease No. 17106 and a corner of State Lease No. 17611 having Coordinates of X = 2,369,800.00 and Y = 420,950.00; thence along the boundary of said State Lease No. 17611 the following courses: East 1,105.00 feet, South 3,850.00 feet, and West 1,105.00 feet to the Southeast corner of said State Lease No. 17106 having Coordinates of X = 2,369,800.00 and Y = 417,100.00; thence North 3,850.00 feet on the East line of said State Lease No. 17106 to the point of beginning, containing approximately **53 acres**, all as more particularly outlined on a plat on file in the Office of Mineral Resources, Department of Natural Resources. All bearings, distances and coordinates are based on Louisiana Coordinate System of 1927, (North or South Zone), where applicable.

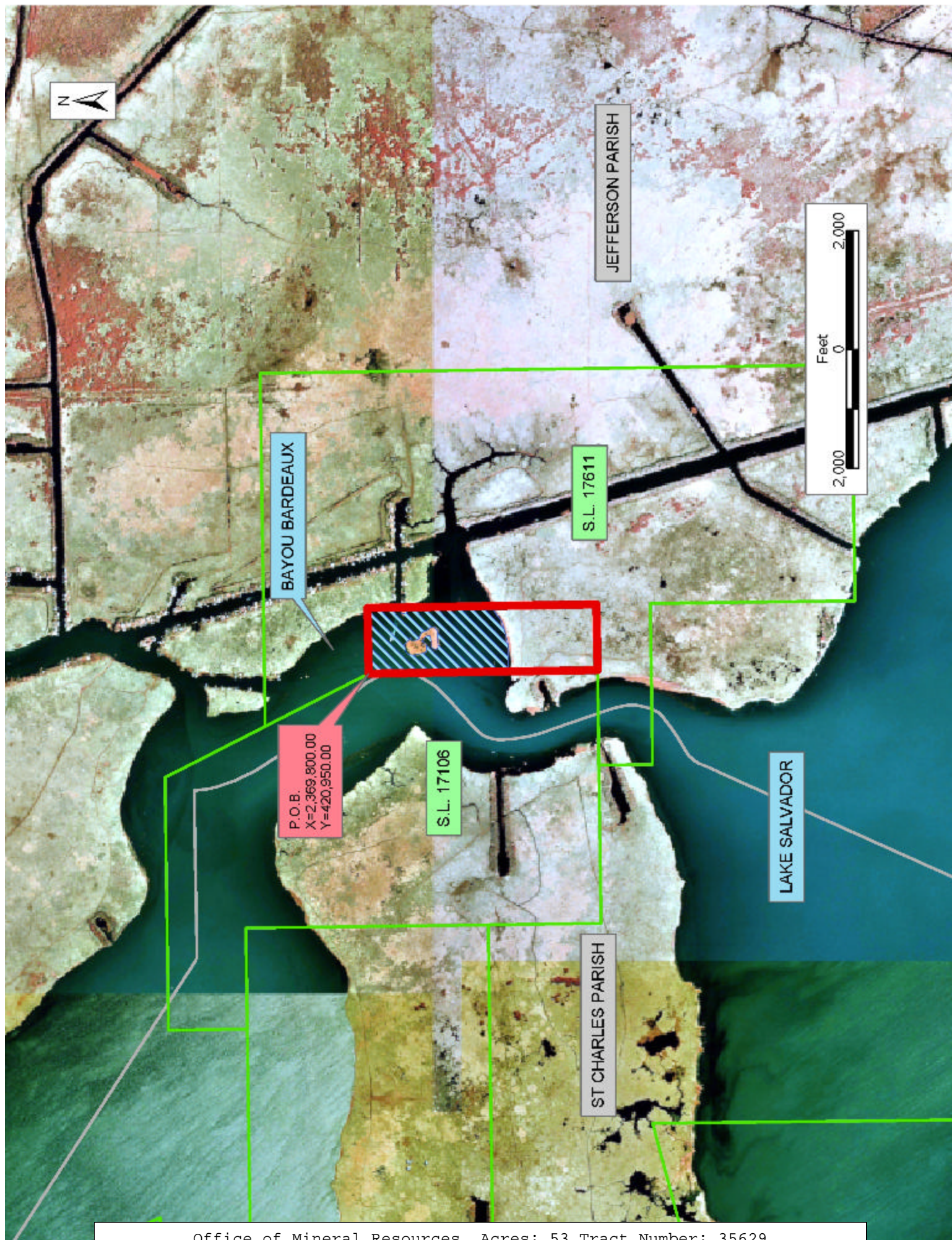
NOTE: The above description of the Tract nominated for lease has been provided and corrected, where required, exclusively by the nomination party. Any mineral lease selected from this Tract and awarded by the Louisiana State Mineral Board shall be without warranty of any kind, either express, implied, or statutory, including, but not limited to, the implied warranties of merchantability and fitness for a particular purpose. Should the mineral lease awarded by the Louisiana State Mineral Board be subsequently modified, cancelled or abrogated due to the existence of conflicting leases, operating agreements, private claims or other future obligations or conditions which may affect all or any portion of the leased Tract, it shall not relieve the Lessee of the obligation to pay any bonus due thereon to the Louisiana State Mineral Board, nor shall the Louisiana State Mineral Board be obligated to refund any consideration paid by the Lessor prior to such modification, cancellation, or abrogation, including, but not limited to, bonuses, rentals and royalties.

NOTE: The State of Louisiana does hereby reserve, and this lease shall be subject to, the imprescriptible right of surface use in the nature of a servitude in favor of the Department of Natural Resources, including its Offices and Commissions, for the sole purpose of implementing, constructing, servicing and maintaining approved coastal zone management and/or restoration projects. Utilization of any and all rights derived under this lease by the mineral lessee, its agents, successors or assigns, shall not interfere with nor hinder the reasonable surface use by the Department of Natural Resources, its Offices or Commissions, as herein above reserved.



Applicant: Doyle Land Services, Inc.

Bidder	Cash Payment	Price/ Acre	Rental	Oil	Gas	Other





#### **TRACT 35630 - Lafourche Parish, Louisiana**

A certain Tract of land, excluding the beds and bottoms of all navigable waters, belonging to and not presently under mineral lease from Louisiana Department Of Transportation And Development on September 10, 2003, being more fully described as follows: Beginning at a point having Coordinates of X = 2,235,500.00 and Y = 360,940.00; thence West 18,480.00 feet to a point having Coordinates of X = 2,217,020.00 and Y = 360,940.00; thence North 18,480.00 feet to a point having Coordinates of X = 2,217,020.00 and Y = 379,420.00; thence East 18,480.00 feet to a point having Coordinates of X = 2,235,500.00 and Y = 379,420.00; thence South 18,480.00 feet to the point of beginning, containing approximately **25 acres**, all as more particularly outlined on a plat on file in the Office of Mineral Resources, Department of Natural Resources. The description is based on information provided by the State Agency regarding location and ownership of surface and mineral rights. All distances, bearing and coordinates, if applicable, are based on the Louisiana Coordinate System of 1927, (North or South Zone).

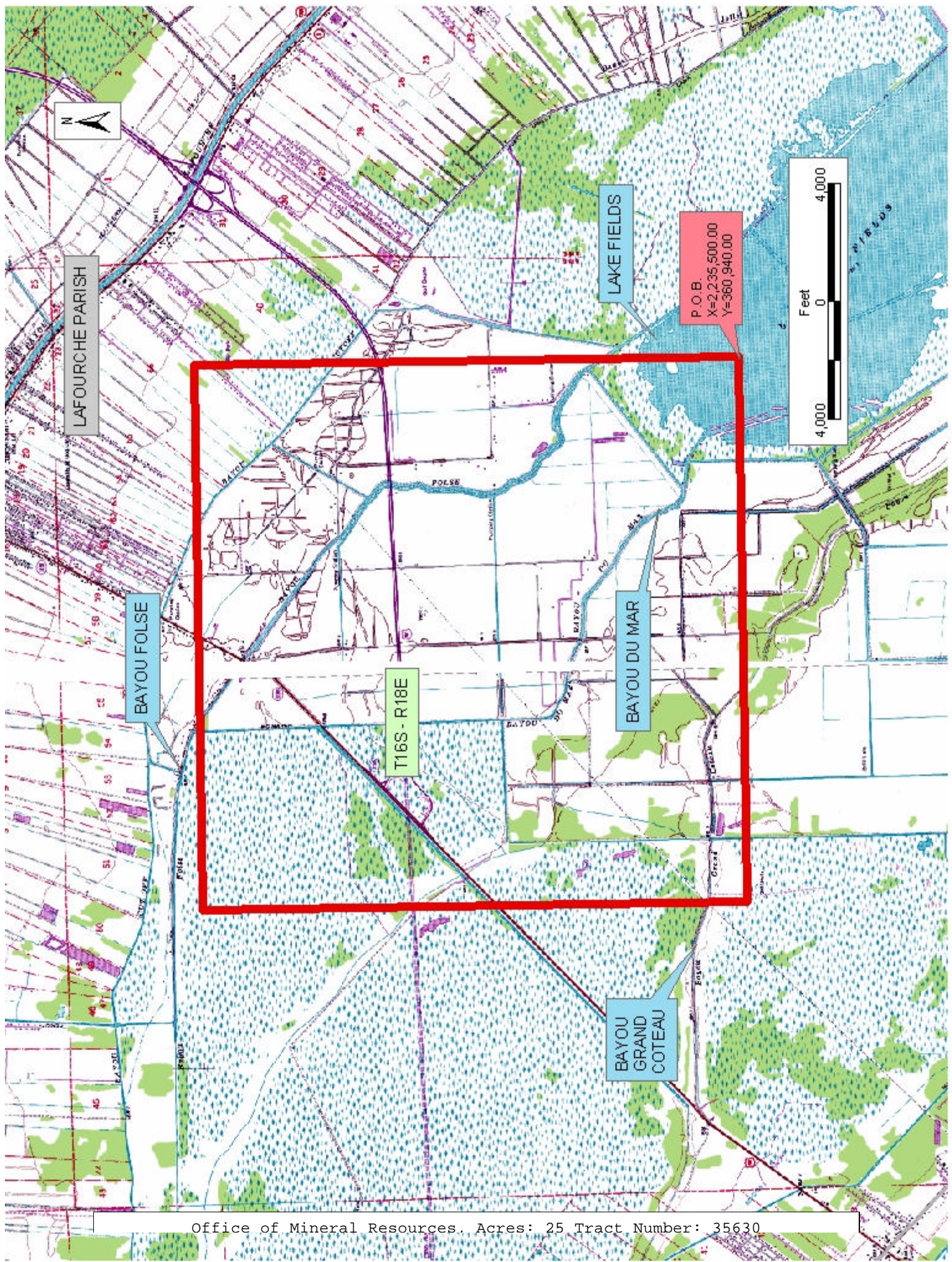
NOTE: The above description of the Tract nominated for lease has been provided and corrected, where required, exclusively by the nomination party. Any mineral lease selected from this Tract and awarded by the Louisiana State Mineral Board shall be without warranty of any kind, either express, implied, or statutory, including, but not limited to, the implied warranties of merchantability and fitness for a particular purpose. Should the mineral lease awarded by the Louisiana State Mineral Board be subsequently modified, cancelled or abrogated due to the existence of conflicting leases, operating agreements, private claims or other future obligations or conditions which may affect all or any portion of the leased Tract, it shall not relieve the Lessee of the obligation to pay any bonus due thereon to the Louisiana State Mineral Board, nor shall the Louisiana State Mineral Board be obligated to refund any consideration paid by the Lessor prior to such modification, cancellation, or abrogation, including, but not limited to, bonuses, rentals and royalties.

NOTE: The State of Louisiana does hereby reserve, and this lease shall be subject to, the imprescriptible right of surface use in the nature of a servitude in favor of the Department of Natural Resources, including its Offices and Commissions, for the sole purpose of implementing, constructing, servicing and maintaining approved coastal zone management and/or restoration projects. Utilization of any and all rights derived under this lease by the mineral lessee, its agents, successors or assigns, shall not interfere with nor hinder the reasonable surface use by the Department of Natural Resources, its Offices or Commissions, as herein above reserved.

Applicant: Harold J. Anderson, Inc. to Agency and by Resolution from the Louisiana Department Of Transportation And Development authorizing the Mineral Board to act in its behalf

Bidder	Cash Payment	Price/ Acre	Rental	Oil	Gas	Other







**TRACT 35631 - Lafourche Parish, Louisiana**

All of the lands now or formerly constituting the beds and bottoms of all water bodies of every nature and description the title of which vests in the State of Louisiana, together with all islands arising therein and other lands formed by accretion or by reliction, where allowed by law, excepting tax adjudicated lands, and not presently under mineral lease on September 10, 2003, situated in Lafourche Parish, Louisiana, and more particularly described as follows: Beginning at a point having Coordinates of X = 2,229,500.00 and Y = 368,900.00; thence North 10,520.00 feet to a point having Coordinates of X = 2,229,500.00 and Y = 379,420.00; thence East 12,480.00 feet to a point having Coordinates of X = 2,241,980.00 and Y = 379,420.00; thence South 10,520.00 feet to a point having Coordinates of X = 2,241,980.00 and Y = 368,900.00; thence West 12,480.00 feet to the point of beginning, containing approximately **1 acre**, all as more particularly outlined on a plat on file in the Office of Mineral Resources, Department of Natural Resources. All bearings, distances and coordinates are based on Louisiana Coordinate System of 1927, (North or South Zone), where applicable.

NOTE: The above description of the Tract nominated for lease has been provided and corrected, where required, exclusively by the nomination party. Any mineral lease selected from this Tract and awarded by the Louisiana State Mineral Board shall be without warranty of any kind, either express, implied, or statutory, including, but not limited to, the implied warranties of merchantability and fitness for a particular purpose. Should the mineral lease awarded by the Louisiana State Mineral Board be subsequently modified, cancelled or abrogated due to the existence of conflicting leases, operating agreements, private claims or other future obligations or conditions which may affect all or any portion of the leased Tract, it shall not relieve the Lessee of the obligation to pay any bonus due thereon to the Louisiana State Mineral Board, nor shall the Louisiana State Mineral Board be obligated to refund any consideration paid by the Lessor prior to such modification, cancellation, or abrogation, including, but not limited to, bonuses, rentals and royalties.

NOTE: The State of Louisiana does hereby reserve, and this lease shall be subject to, the imprescriptible right of surface use in the nature of a servitude in favor of the Department of Natural Resources, including its Offices and Commissions, for the sole purpose of implementing, constructing, servicing and maintaining approved coastal zone management and/or restoration projects. Utilization of any and all rights derived under this lease by the mineral lessee, its agents, successors or assigns, shall not interfere with nor hinder the reasonable surface use by the Department of Natural Resources, its Offices or Commissions, as herein above reserved.



Applicant: Harold J. Anderson, Inc.

Bidder	Cash Payment	Price/ Acre	Rental	Oil	Gas	Other



