

TRACT 35606 - Ouachita Parish, Louisiana

All of the lands now or formerly constituting the beds and bottoms of all water bodies of every nature and description the title of which vests in the State of Louisiana, together with all islands arising therein and other lands formed by accretion or by reliction, where allowed by law, excepting tax adjudicated lands, and not presently under mineral lease on September 10, 2003, situated in Ouachita Parish, Louisiana, and more particularly described as follows: Beginning at a point having Coordinates of X = 2,110,276.93 and Y = 660,100.05; thence South, 2,395.98 feet, to a point having Coordinates of X = 2,110,276.93 and Y = 657,704.06; thence East 5,473.05 feet, to a point having Coordinates of X = 2,115,749.99 and Y = 657,704.06; thence North, 2,395.98 feet, to a point having Coordinates of X = 2,115,749.99 and Y = 660,100.05; thence West, 5,473.05 feet, to the point of beginning, containing approximately **42 acres**, all as more particularly outlined on a plat on file in the Office of Mineral Resources, Department of Natural Resources. All bearings, distances and coordinates are based on Louisiana Coordinate System of 1927, (North or South Zone), where applicable.

NOTE: The above description of the Tract nominated for lease has been provided and corrected, where required, exclusively by the nomination party. Any mineral lease selected from this Tract and awarded by the Louisiana State Mineral Board shall be without warranty of any kind, either express, implied, or statutory, including, but not limited to, the implied warranties of merchantability and fitness for a particular purpose. Should the mineral lease awarded by the Louisiana State Mineral Board be subsequently modified, cancelled or abrogated due to the existence of conflicting leases, operating agreements, private claims or other future obligations or conditions which may affect all or any portion of the leased Tract, it shall not relieve the Lessee of the obligation to pay any bonus due thereon to the Louisiana State Mineral Board, nor shall the Louisiana State Mineral Board be obligated to refund any consideration paid by the Lessor prior to such modification, cancellation, or abrogation, including, but not limited to, bonuses, rentals and royalties.

NOTE: The State of Louisiana does hereby reserve, and this lease shall be subject to, the imprescriptible right of surface use in the nature of a servitude in favor of the Department of Natural Resources, including its Offices and Commissions, for the sole purpose of implementing, constructing, servicing and maintaining approved coastal zone management and/or restoration projects. Utilization of any and all rights derived under this lease by the mineral lessee, its agents, successors or assigns, shall not interfere with nor hinder the reasonable surface use by the Department of Natural Resources, its Offices or Commissions, as herein above reserved.

Applicant: Brammer Engineering, Inc.

Bidder	Cash Payment	Price/ Acre	Rental	Oil	Gas	Other



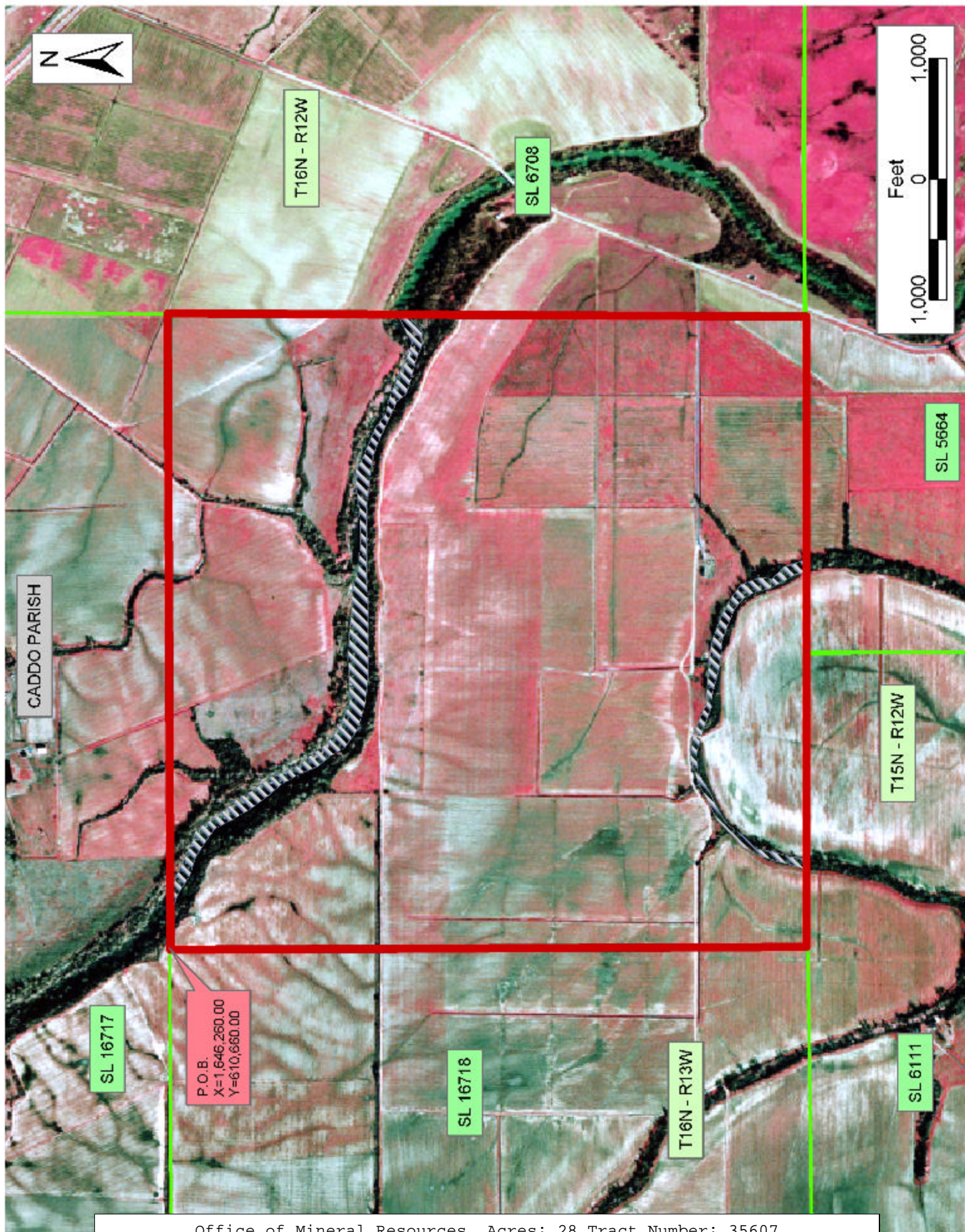
TRACT 35607 - Caddo Parish, Louisiana

All of the lands now or formerly constituting the beds and bottoms of all water bodies of every nature and description the title of which vests in the State of Louisiana, together with all islands arising therein and other lands formed by accretion or by reliction, where allowed by law, excepting tax adjudicated lands, and not presently under mineral lease on September 10, 2003, situated in Caddo Parish, Louisiana, and more particularly described as follows: Beginning at the Northeast corner of State Lease No. 16718, having Coordinates of X = 1,646,260.00 and Y = 610,660.00, said point also located on the South boundary of State Lease No. 16717; thence East approximately 5,280 feet along the South boundary of said State Lease No. 16717 and/or a projection thereof to a point on the West boundary of State Lease No. 6708, having a Coordinate of Y = 610,660.00; thence Southerly approximately 5,280 feet along the West boundary of said State Lease No. 6708 to its Southwest corner located on the North boundary of State Lease No. 5664; thence Westerly along the North boundary of said State Lease No. 5664 to its Northwest corner and the Northeast corner of State Lease No. 6111; thence Westerly along the North boundary of said State Lease No. 6111 to a point of intersection with the East boundary of said State Lease No. 16718 and/or a projection thereof, having a Coordinate of X = 1,646,260.00; thence North approximately 5,280 feet along the East boundary of said State Lease No. 16718 and/or a projection thereof to the point of beginning, **LESS AND EXCEPT** all those portions of State Lease No. 6708, State Lease No. 5664 and State Lease No. 6111 that may lie within the above described tract, containing approximately **28 acres**, all as more particularly outlined on a plat on file in the Office of Mineral Resources, Department of Natural Resources. All bearings, distances and coordinates are based on Louisiana Coordinate System of 1927, (North or South Zone), where applicable.

NOTE: The above description of the Tract nominated for lease has been provided and corrected, where required, exclusively by the nomination party. Any mineral lease selected from this Tract and awarded by the Louisiana State Mineral Board shall be without warranty of any kind, either express, implied, or statutory, including, but not limited to, the implied warranties of merchantability and fitness for a particular purpose. Should the mineral lease awarded by the Louisiana State Mineral Board be subsequently modified, cancelled or abrogated due to the existence of conflicting leases, operating agreements, private claims or other future obligations or conditions which may affect all or any portion of the leased Tract, it shall not relieve the Lessee of the obligation to pay any bonus due thereon to the Louisiana State Mineral Board, nor shall the Louisiana State Mineral Board be obligated to refund any consideration paid by the Lessor prior to such modification, cancellation, or abrogation, including, but not limited to, bonuses, rentals and royalties.

Applicant: Huddleston Land Services, Inc.

Bidder	Cash Payment	Price/ Acre	Rental	Oil	Gas	Other



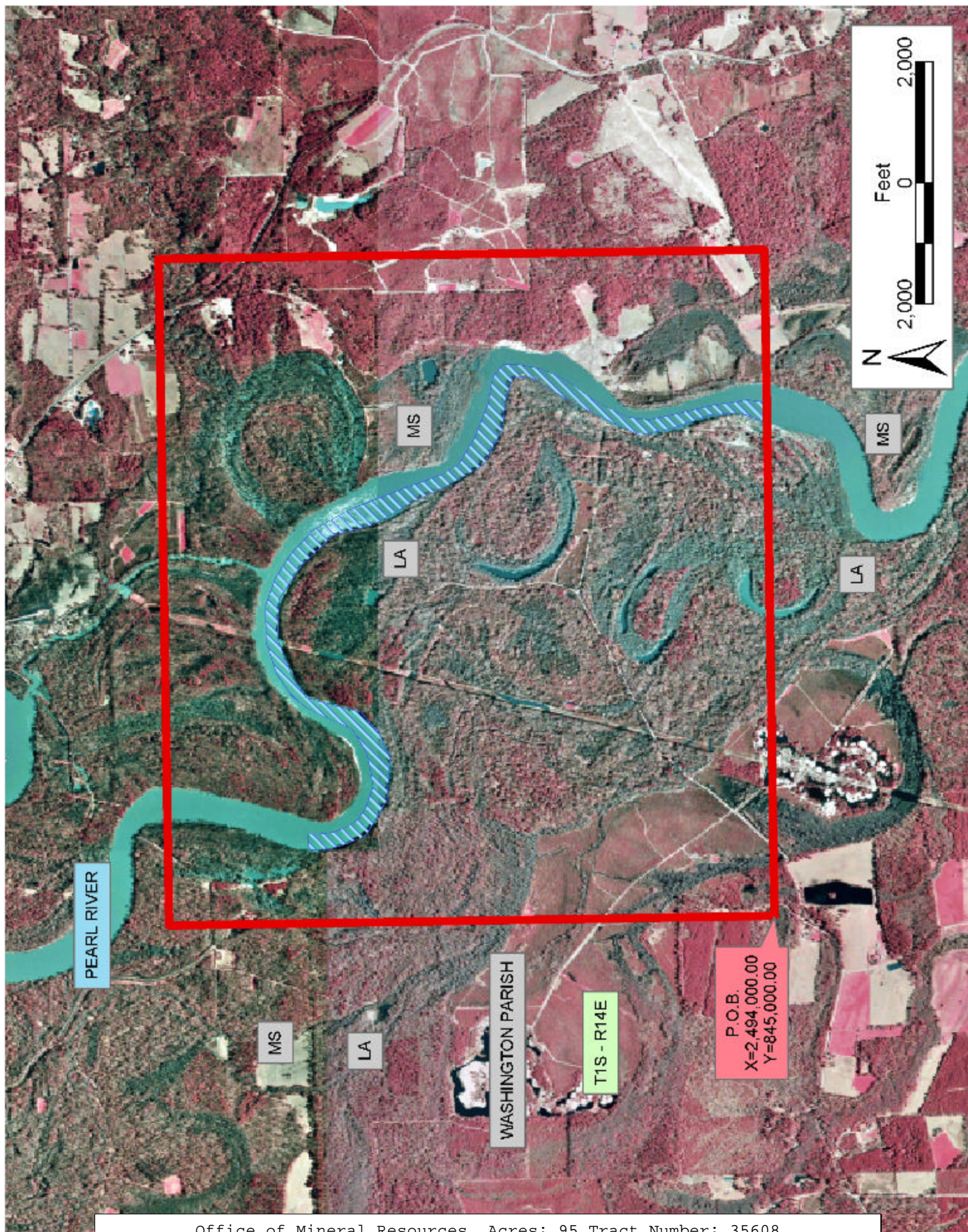
TRACT 35608 - Washington Parish, Louisiana

All of the lands now or formerly constituting the beds and bottoms of all water bodies of every nature and description the title of which vests in the State of Louisiana, together with all islands arising therein and other lands formed by accretion or by reliction, where allowed by law, excepting tax adjudicated lands, and not presently under mineral lease on September 10, 2003, situated in Washington Parish, Louisiana, and more particularly described as follows: Beginning at a point having Coordinates of X = 2,494,000.00 and Y = 845,000.00; thence North 10,000.00 feet to a point having Coordinates of X = 2,494,000.00 and Y = 855,000.00; thence East 11,000.00 feet to a point having Coordinates of X = 2,505,000.00 and Y = 855,000.00; thence South 10,000.00 feet to a point having Coordinates of X = 2,505,000.00 and Y = 845,000.00; thence West 11,000.00 feet to the point of beginning, containing approximately **95 acres**, all as more particularly outlined on a plat on file in the Office of Mineral Resources, Department of Natural Resources. All bearings, distances and coordinates are based on Louisiana Coordinate System of 1927, (North or South Zone), where applicable.

NOTE: The above description of the Tract nominated for lease has been provided and corrected, where required, exclusively by the nomination party. Any mineral lease selected from this Tract and awarded by the Louisiana State Mineral Board shall be without warranty of any kind, either express, implied, or statutory, including, but not limited to, the implied warranties of merchantability and fitness for a particular purpose. Should the mineral lease awarded by the Louisiana State Mineral Board be subsequently modified, cancelled or abrogated due to the existence of conflicting leases, operating agreements, private claims or other future obligations or conditions which may affect all or any portion of the leased Tract, it shall not relieve the Lessee of the obligation to pay any bonus due thereon to the Louisiana State Mineral Board, nor shall the Louisiana State Mineral Board be obligated to refund any consideration paid by the Lessor prior to such modification, cancellation, or abrogation, including, but not limited to, bonuses, rentals and royalties.

Applicant: Theophilus Oil Gas & Land Services, LLC

Bidder	Cash Payment	Price/ Acre	Rental	Oil	Gas	Other



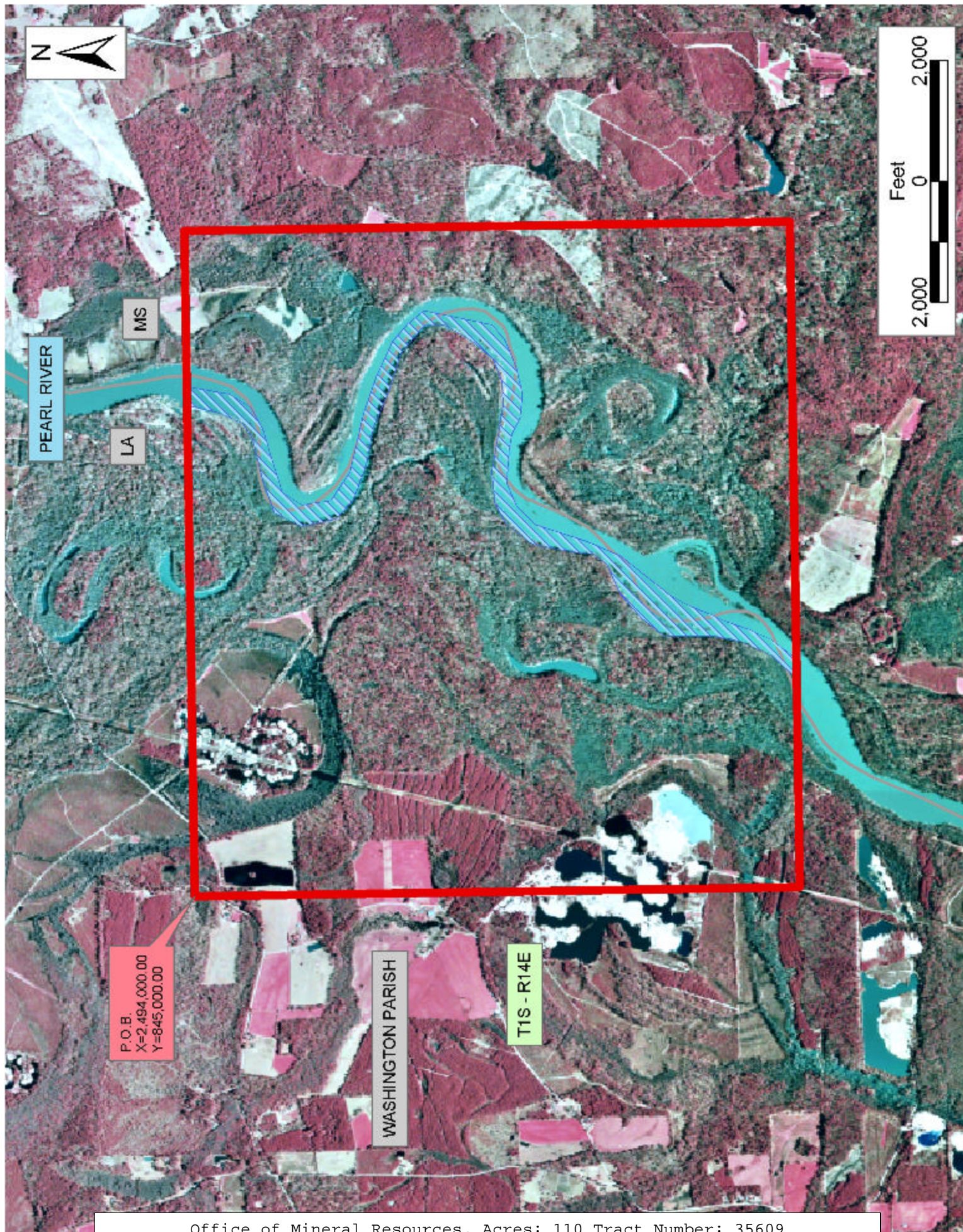
TRACT 35609 - Washington Parish, Louisiana

All of the lands now or formerly constituting the beds and bottoms of all water bodies of every nature and description the title of which vests in the State of Louisiana, together with all islands arising therein and other lands formed by accretion or by reliction, where allowed by law, excepting tax adjudicated lands, and not presently under mineral lease on September 10, 2003, situated in Washington Parish, Louisiana, and more particularly described as follows: Beginning at a point having Coordinates of X = 2,494,000.00 and Y = 845,000.00; thence East 11,000.00 feet to a point having Coordinates of X = 2,505,000.00 and Y = 845,000.00; thence South 10,000.00 feet to a point having Coordinates of X = 2,505,000.00 and Y = 835,000.00; thence West 11,000.00 feet to a point having Coordinates of X = 2,494,000.00 and Y = 835,000.00; thence North 10,000.00 feet to the point of beginning, containing approximately **110 acres**, all as more particularly outlined on a plat on file in the Office of Mineral Resources, Department of Natural Resources. All bearings, distances and coordinates are based on Louisiana Coordinate System of 1927, (North or South Zone), where applicable.

NOTE: The above description of the Tract nominated for lease has been provided and corrected, where required, exclusively by the nomination party. Any mineral lease selected from this Tract and awarded by the Louisiana State Mineral Board shall be without warranty of any kind, either express, implied, or statutory, including, but not limited to, the implied warranties of merchantability and fitness for a particular purpose. Should the mineral lease awarded by the Louisiana State Mineral Board be subsequently modified, cancelled or abrogated due to the existence of conflicting leases, operating agreements, private claims or other future obligations or conditions which may affect all or any portion of the leased Tract, it shall not relieve the Lessee of the obligation to pay any bonus due thereon to the Louisiana State Mineral Board, nor shall the Louisiana State Mineral Board be obligated to refund any consideration paid by the Lessor prior to such modification, cancellation, or abrogation, including, but not limited to, bonuses, rentals and royalties.

Applicant: Theophilus Oil Gas & Land Services, LLC.

Bidder	Cash Payment	Price/ Acre	Rental	Oil	Gas	Other



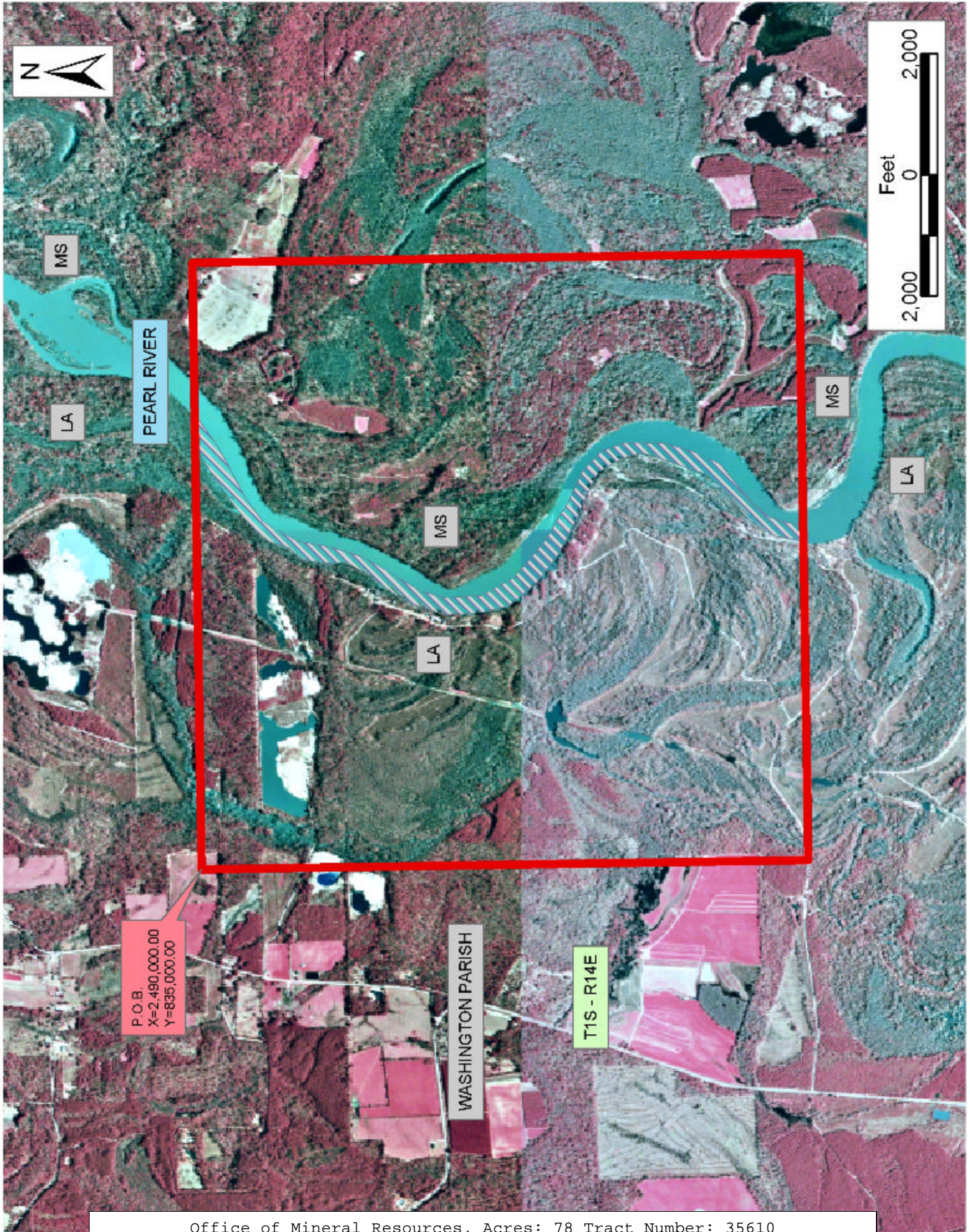
TRACT 35610 - Washington Parish, Louisiana

All of the lands now or formerly constituting the beds and bottoms of all water bodies of every nature and description the title of which vests in the State of Louisiana, together with all islands arising therein and other lands formed by accretion or by reliction, where allowed by law, excepting tax adjudicated lands, and not presently under mineral lease on September 10, 2003, situated in Washington Parish, Louisiana, and more particularly described as follows: Beginning at a point having Coordinates of X = 2,490,000.00 and Y = 835,000.00; thence East 10,000.00 feet to a point having Coordinates of X = 2,500,000.00 and Y = 835,000.00; thence South 10,000.00 feet to a point having Coordinates of X = 2,500,000.00 and Y = 825,000.00; thence West 10,000.00 feet to a point having Coordinates of X = 2,490,000.00 and Y = 825,000.00; thence North 10,000.00 feet to the point of beginning, containing approximately **78 acres**, all as more particularly outlined on a plat on file in the Office of Mineral Resources, Department of Natural Resources. All bearings, distances and coordinates are based on Louisiana Coordinate System of 1927, (North or South Zone), where applicable.

NOTE: The above description of the Tract nominated for lease has been provided and corrected, where required, exclusively by the nomination party. Any mineral lease selected from this Tract and awarded by the Louisiana State Mineral Board shall be without warranty of any kind, either express, implied, or statutory, including, but not limited to, the implied warranties of merchantability and fitness for a particular purpose. Should the mineral lease awarded by the Louisiana State Mineral Board be subsequently modified, cancelled or abrogated due to the existence of conflicting leases, operating agreements, private claims or other future obligations or conditions which may affect all or any portion of the leased Tract, it shall not relieve the Lessee of the obligation to pay any bonus due thereon to the Louisiana State Mineral Board, nor shall the Louisiana State Mineral Board be obligated to refund any consideration paid by the Lessor prior to such modification, cancellation, or abrogation, including, but not limited to, bonuses, rentals and royalties.

Applicant: Theophilus Oil Gas & Land Services, LLC

Bidder	Cash Payment	Price/ Acre	Rental	Oil	Gas	Other



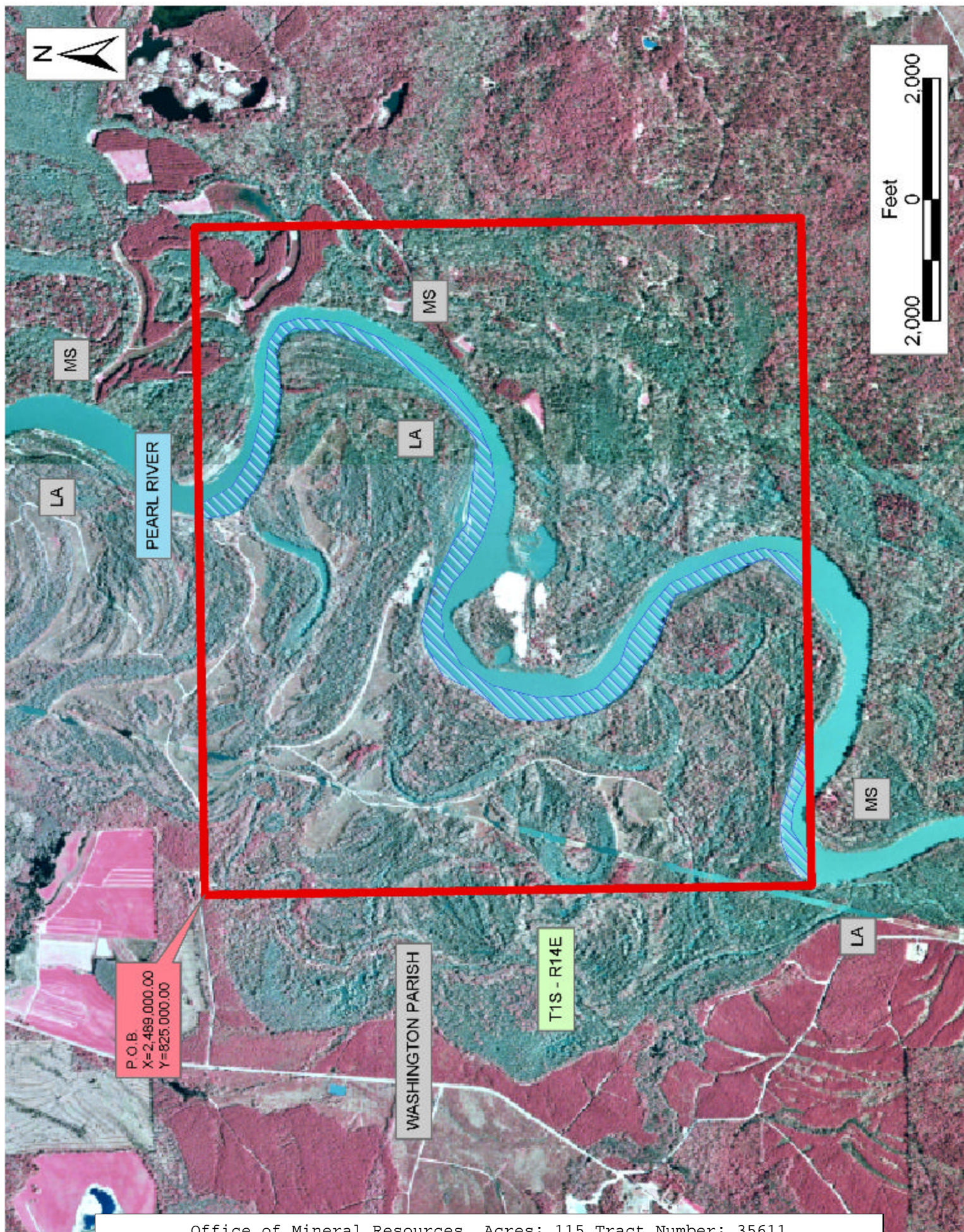
TRACT 35611 - Washington Parish, Louisiana

All of the lands now or formerly constituting the beds and bottoms of all water bodies of every nature and description the title of which vests in the State of Louisiana, together with all islands arising therein and other lands formed by accretion or by reliction, where allowed by law, excepting tax adjudicated lands, and not presently under mineral lease on September 10, 2003, situated in Washington Parish, Louisiana, and more particularly described as follows: Beginning at a point having Coordinates of X = 2,489,000.00 and Y = 825,000.00; thence East 11,000.00 feet to a point having Coordinates of X = 2,500,000.00 and Y = 825,000.00; thence South 10,000.00 feet to a point having Coordinates of X = 2,500,000.00 and Y = 815,000.00; thence West 11,000.00 feet to a point having Coordinates of X = 2,489,000.00 and Y = 815,000.00; thence North 10,000.00 feet to the point of beginning, containing approximately **115 acres**, all as more particularly outlined on a plat on file in the Office of Mineral Resources, Department of Natural Resources. All bearings, distances and coordinates are based on Louisiana Coordinate System of 1927, (North or South Zone), where applicable.

NOTE: The above description of the Tract nominated for lease has been provided and corrected, where required, exclusively by the nomination party. Any mineral lease selected from this Tract and awarded by the Louisiana State Mineral Board shall be without warranty of any kind, either express, implied, or statutory, including, but not limited to, the implied warranties of merchantability and fitness for a particular purpose. Should the mineral lease awarded by the Louisiana State Mineral Board be subsequently modified, cancelled or abrogated due to the existence of conflicting leases, operating agreements, private claims or other future obligations or conditions which may affect all or any portion of the leased Tract, it shall not relieve the Lessee of the obligation to pay any bonus due thereon to the Louisiana State Mineral Board, nor shall the Louisiana State Mineral Board be obligated to refund any consideration paid by the Lessor prior to such modification, cancellation, or abrogation, including, but not limited to, bonuses, rentals and royalties.

Applicant: Theophilus Oil Gas & Land Services, LLC.

Bidder	Cash Payment	Price/ Acre	Rental	Oil	Gas	Other



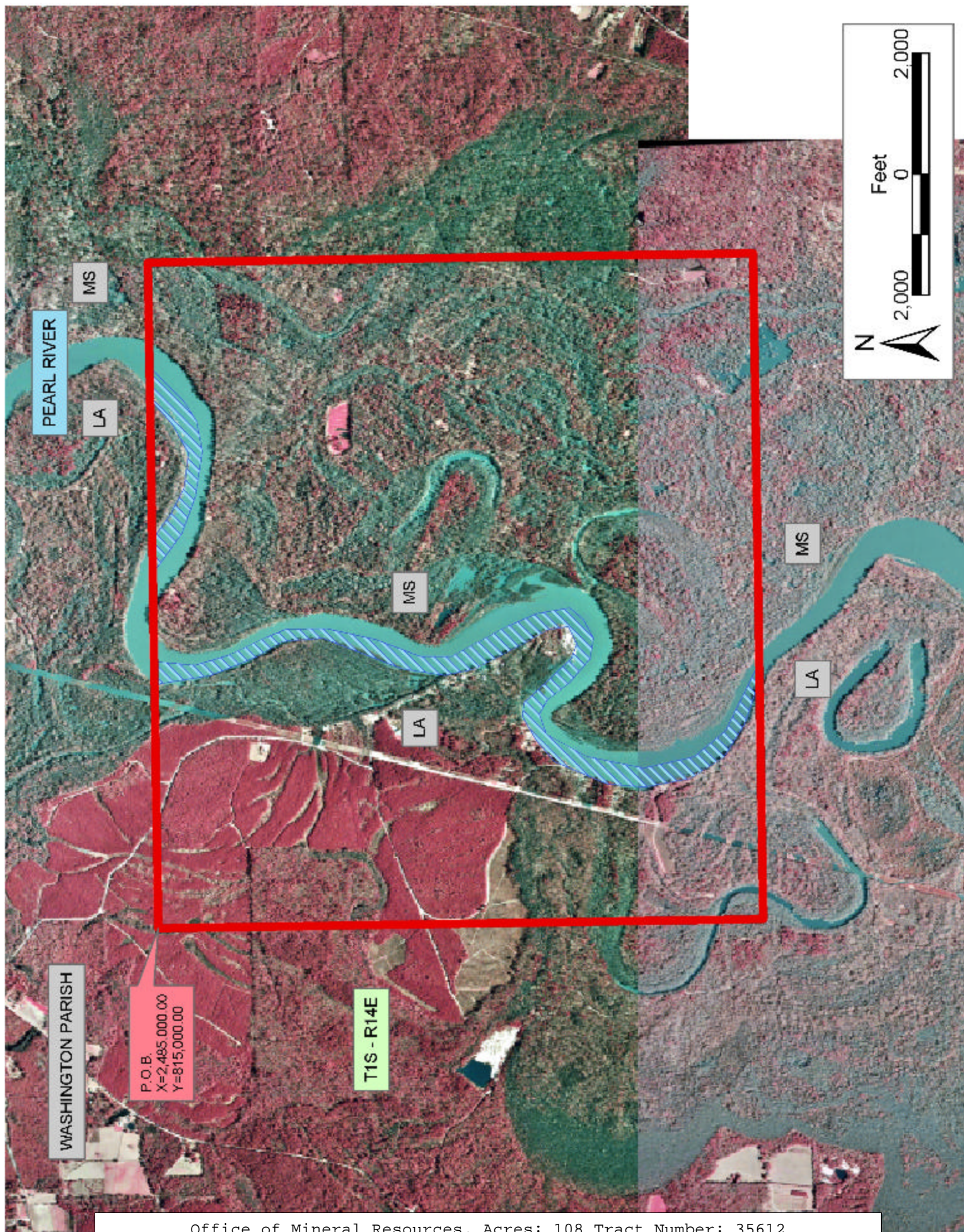
TRACT 35612 - Washington Parish, Louisiana

All of the lands now or formerly constituting the beds and bottoms of all water bodies of every nature and description the title of which vests in the State of Louisiana, together with all islands arising therein and other lands formed by accretion or by reliction, where allowed by law, excepting tax adjudicated lands, and not presently under mineral lease on September 10, 2003, situated in Washington Parish, Louisiana, and more particularly described as follows: Beginning at a point having Coordinates of X = 2,485,000.00 and Y = 815,000.00; thence East 11,000.00 feet to a point having Coordinates of X = 2,496,000.00 and Y = 815,000.00; thence South 10,000.00 feet to a point having Coordinates of X = 2,496,000.00 and Y = 805,000.00; thence West 11,000.00 feet to a point having Coordinates of X = 2,485,000.00 and Y = 805,000.00; thence North 10,000.00 feet to the point of beginning, containing approximately **108 acres**, all as more particularly outlined on a plat on file in the Office of Mineral Resources, Department of Natural Resources. All bearings, distances and coordinates are based on Louisiana Coordinate System of 1927, (North or South Zone), where applicable.

NOTE: The above description of the Tract nominated for lease has been provided and corrected, where required, exclusively by the nomination party. Any mineral lease selected from this Tract and awarded by the Louisiana State Mineral Board shall be without warranty of any kind, either express, implied, or statutory, including, but not limited to, the implied warranties of merchantability and fitness for a particular purpose. Should the mineral lease awarded by the Louisiana State Mineral Board be subsequently modified, cancelled or abrogated due to the existence of conflicting leases, operating agreements, private claims or other future obligations or conditions which may affect all or any portion of the leased Tract, it shall not relieve the Lessee of the obligation to pay any bonus due thereon to the Louisiana State Mineral Board, nor shall the Louisiana State Mineral Board be obligated to refund any consideration paid by the Lessor prior to such modification, cancellation, or abrogation, including, but not limited to, bonuses, rentals and royalties.

Applicant: Theophilus Oil Gas & Land Services, LLC

Bidder	Cash Payment	Price/ Acre	Rental	Oil	Gas	Other



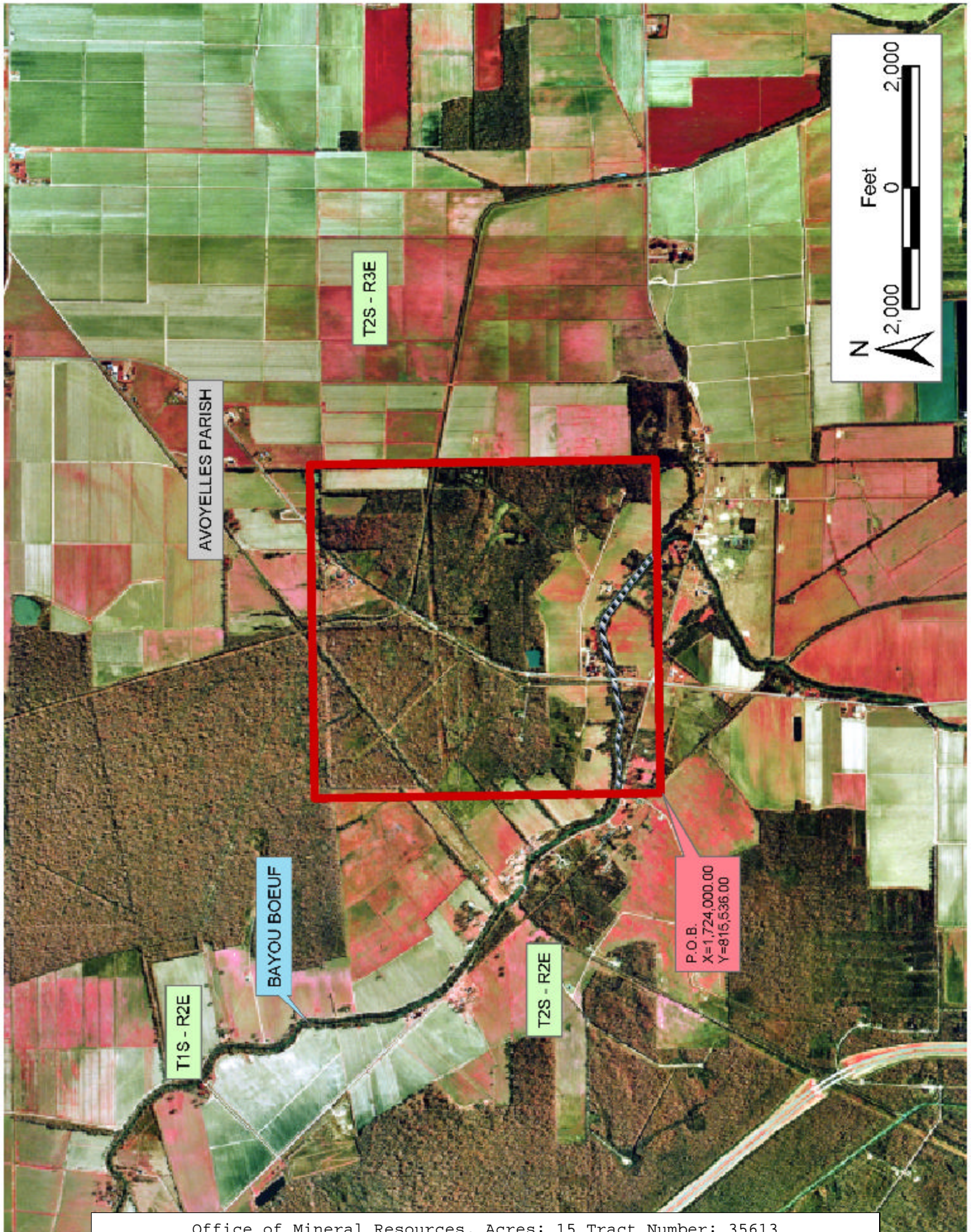
TRACT 35613 - Avoyelles Parish, Louisiana

All of the lands now or formerly constituting the beds and bottoms of all water bodies of every nature and description the title of which vests in the State of Louisiana, together with all islands arising therein and other lands formed by accretion or by reliction, where allowed by law, excepting tax adjudicated lands, and not presently under mineral lease on September 10, 2003, situated in Avoyelles Parish, Louisiana, and more particularly described as follows: Beginning a point having Coordinates of X = 1,724,000.00 and Y = 815,536.00; thence North 5,700.00 feet to a point having Coordinates of X = 1,724,000.00 and Y = 821,236.00; thence East 5,500.00 feet to a point having Coordinates of X = 1,729,500.00 and Y = 821,236.00; thence South 5,700.00 feet to a point having Coordinates of X = 1,729,500.00 and Y = 815,536.00; thence West 5,500.00 feet to the point of beginning, containing approximately **15 acres**, all as more particularly outlined on a plat on file in the Office of Mineral Resources, Department of Natural Resources. All bearings, distances and coordinates are based on Louisiana Coordinate System of 1927, (North or South Zone), where applicable.

NOTE: The above description of the Tract nominated for lease has been provided and corrected, where required, exclusively by the nomination party. Any mineral lease selected from this Tract and awarded by the Louisiana State Mineral Board shall be without warranty of any kind, either express, implied, or statutory, including, but not limited to, the implied warranties of merchantability and fitness for a particular purpose. Should the mineral lease awarded by the Louisiana State Mineral Board be subsequently modified, cancelled or abrogated due to the existence of conflicting leases, operating agreements, private claims or other future obligations or conditions which may affect all or any portion of the leased Tract, it shall not relieve the Lessee of the obligation to pay any bonus due thereon to the Louisiana State Mineral Board, nor shall the Louisiana State Mineral Board be obligated to refund any consideration paid by the Lessor prior to such modification, cancellation, or abrogation, including, but not limited to, bonuses, rentals and royalties.

Applicant: Winne Land & Minerals, Inc.

Bidder	Cash Payment	Price/ Acre	Rental	Oil	Gas	Other



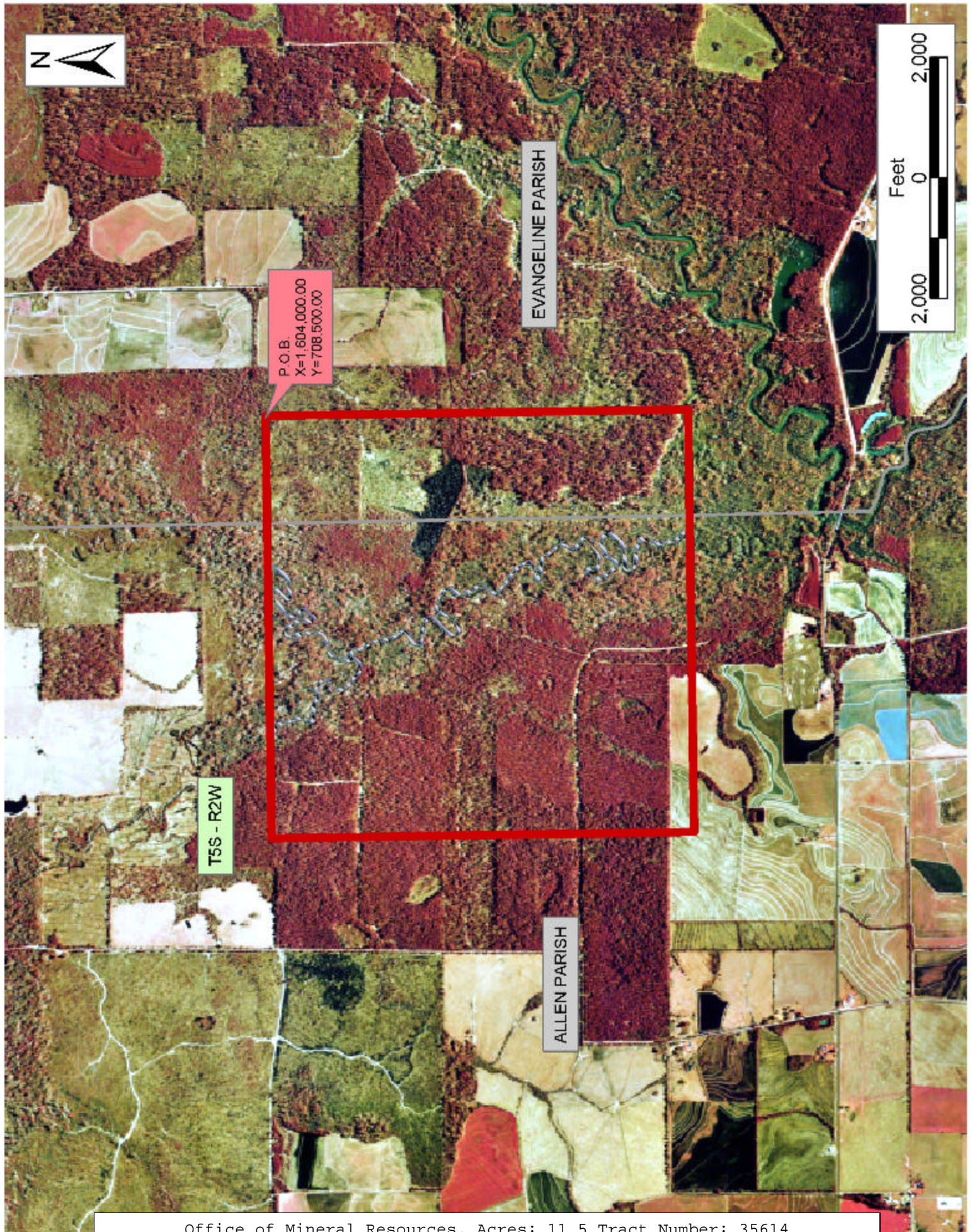
TRACT 35614 - Allen and Evangeline Parishes, Louisiana

All of the lands now or formerly constituting the beds and bottoms of all water bodies of every nature and description the title of which vests in the State of Louisiana, together with all islands arising therein and other lands formed by accretion or by reliction, where allowed by law, excepting tax adjudicated lands, and not presently under mineral lease on September 10, 2003, situated in Allen and Evangeline Parishes, Louisiana, and more particularly described as follows: Beginning at a point having Coordinates of X = 1,604,000.00 and Y = 708,500.00; thence South 7,000.00 feet to a point having Coordinates of X = 1,604,000.00 and Y = 701,500.00; thence West 7,000.00 feet to a point having Coordinates of X = 1,597,000.00 and Y = 701,500.00; thence North 7,000.00 to a point having Coordinates of X = 1,597,000.00 and Y = 708,500.00; thence East 7,000.00 feet to the point of beginning, containing approximately **11.50 acres**, all as more particularly outlined on a plat on file in the Office of Mineral Resources, Department of Natural Resources. All bearings, distances and coordinates are based on Louisiana Coordinate System of 1927, (North or South Zone), where applicable.

NOTE: The above description of the Tract nominated for lease has been provided and corrected, where required, exclusively by the nomination party. Any mineral lease selected from this Tract and awarded by the Louisiana State Mineral Board shall be without warranty of any kind, either express, implied, or statutory, including, but not limited to, the implied warranties of merchantability and fitness for a particular purpose. Should the mineral lease awarded by the Louisiana State Mineral Board be subsequently modified, cancelled or abrogated due to the existence of conflicting leases, operating agreements, private claims or other future obligations or conditions which may affect all or any portion of the leased Tract, it shall not relieve the Lessee of the obligation to pay any bonus due thereon to the Louisiana State Mineral Board, nor shall the Louisiana State Mineral Board be obligated to refund any consideration paid by the Lessor prior to such modification, cancellation, or abrogation, including, but not limited to, bonuses, rentals and royalties.

Applicant: Day Exploration

Bidder	Cash Payment	Price/ Acre	Rental	Oil	Gas	Other



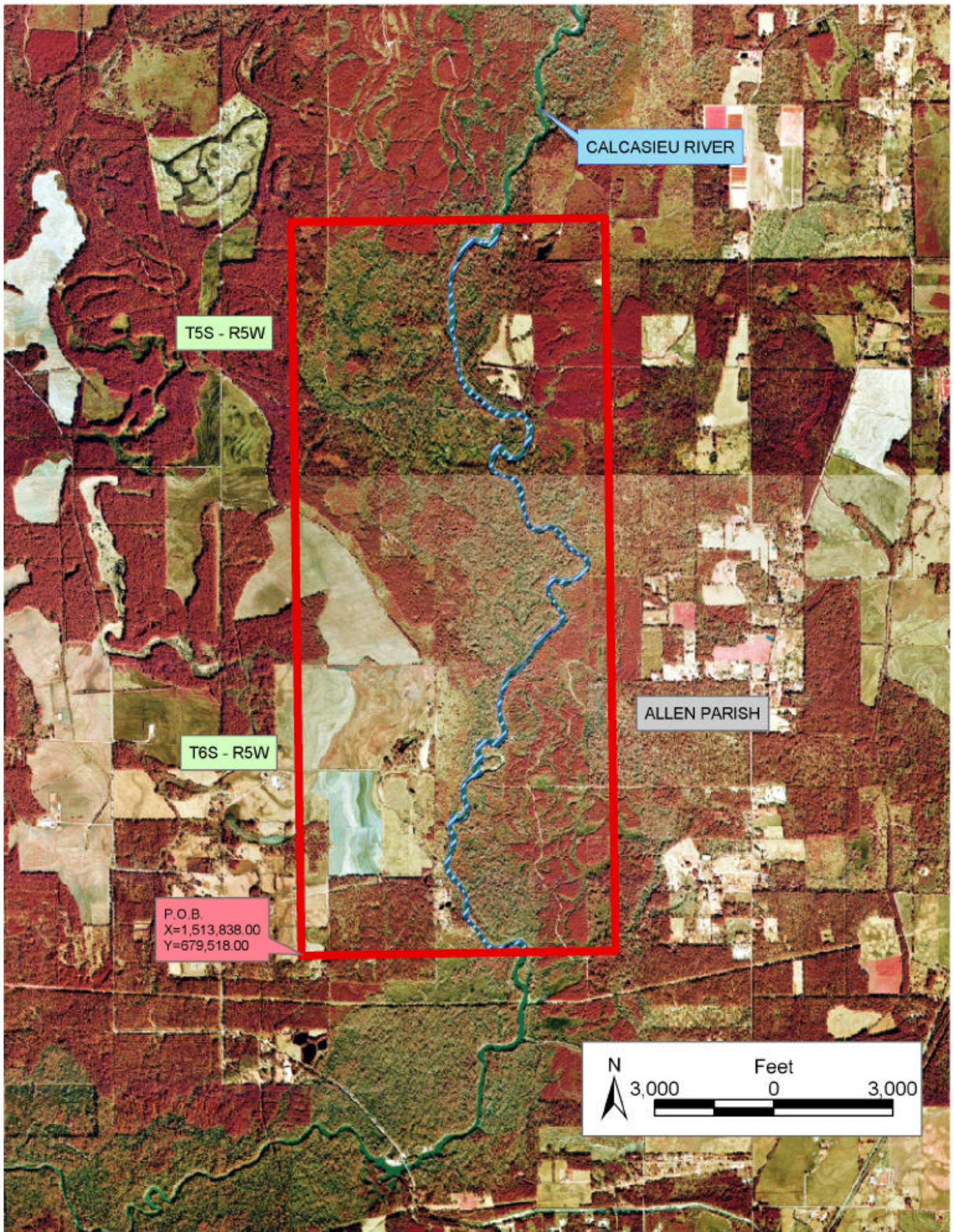
TRACT 35615 - Allen Parish, Louisiana

All of the lands now or formerly constituting the beds and bottoms of all water bodies of every nature and description the title of which vests in the State of Louisiana, together with all islands arising therein and other lands formed by accretion or by reliction, where allowed by law, excepting tax adjudicated lands, and not presently under mineral lease on September 10, 2003, situated in Allen Parish, Louisiana, and more particularly described as follows: Beginning at a point having Coordinates of X = 1,513,838.00 and Y = 679,518.00; thence North 18,480.00 feet to a point having Coordinates of X = 1,513,838.00 and Y = 697,998.00; thence East 7,920.00 feet to a point having Coordinates of X = 1,521,758.00 and Y = 697,998.00; thence South 18,480.00 feet to a point having Coordinates of X = 1,521,758.00 and Y = 679,518.00; thence West 7,920.00 feet to the point of beginning, containing approximately **60 acres**, all as more particularly outlined on a plat on file in the Office of Mineral Resources, Department of Natural Resources. All bearings, distances and coordinates are based on Louisiana Coordinate System of 1927, (North or South Zone), where applicable.

NOTE: The above description of the Tract nominated for lease has been provided and corrected, where required, exclusively by the nomination party. Any mineral lease selected from this Tract and awarded by the Louisiana State Mineral Board shall be without warranty of any kind, either express, implied, or statutory, including, but not limited to, the implied warranties of merchantability and fitness for a particular purpose. Should the mineral lease awarded by the Louisiana State Mineral Board be subsequently modified, cancelled or abrogated due to the existence of conflicting leases, operating agreements, private claims or other future obligations or conditions which may affect all or any portion of the leased Tract, it shall not relieve the Lessee of the obligation to pay any bonus due thereon to the Louisiana State Mineral Board, nor shall the Louisiana State Mineral Board be obligated to refund any consideration paid by the Lessor prior to such modification, cancellation, or abrogation, including, but not limited to, bonuses, rentals and royalties.

Applicant: Theophilus Oil Gas & Land Services, LLC

Bidder	Cash Payment	Price/ Acre	Rental	Oil	Gas	Other



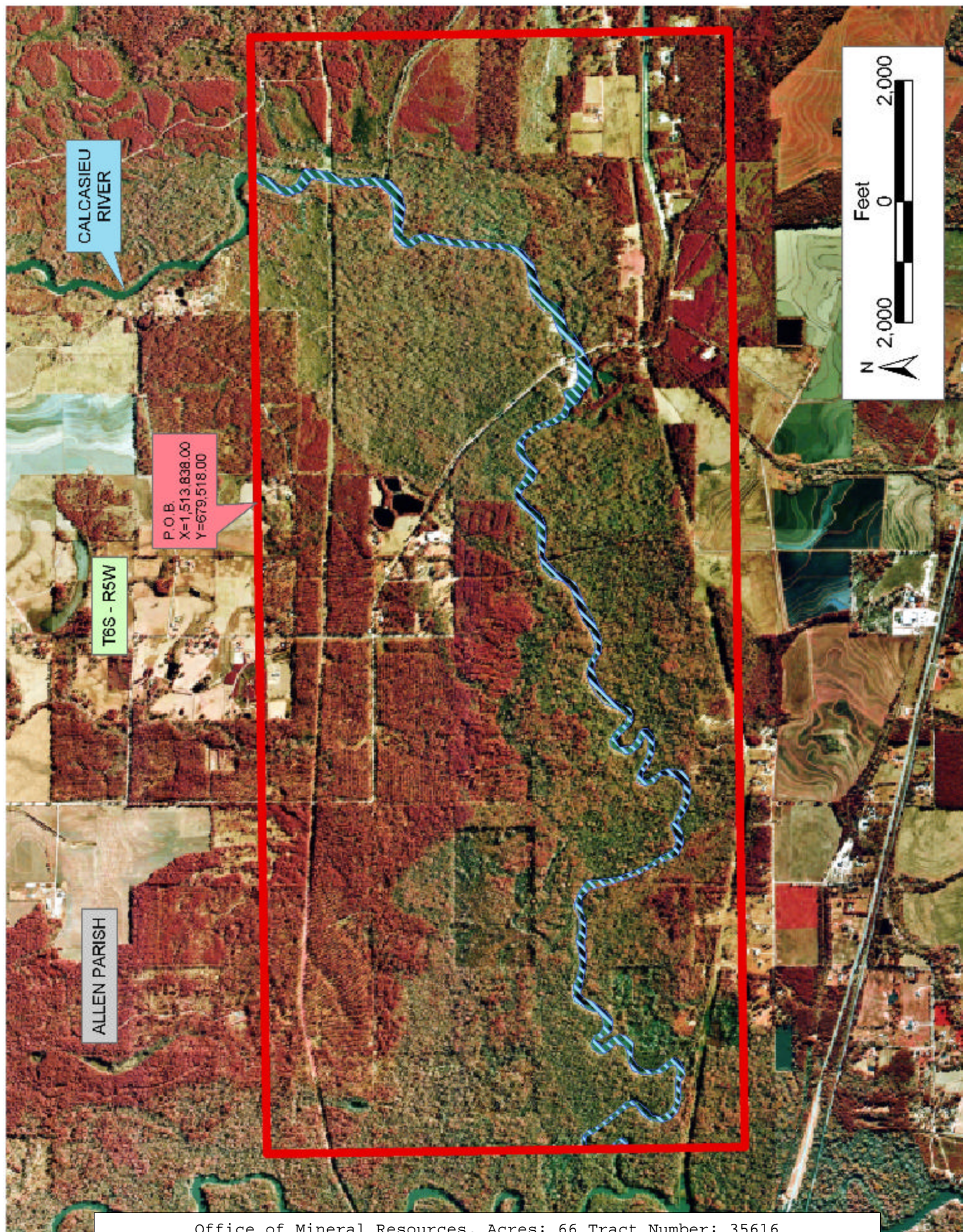
TRACT 35616 - Allen Parish, Louisiana

All of the lands now or formerly constituting the beds and bottoms of all water bodies of every nature and description the title of which vests in the State of Louisiana, together with all islands arising therein and other lands formed by accretion or by reliction, where allowed by law, excepting tax adjudicated lands, and not presently under mineral lease on September 10, 2003, situated in Allen Parish, Louisiana, and more particularly described as follows: Beginning at a point having Coordinates of X = 1,513,838.00 and Y = 679,518.00; thence East 7,920.00 feet to a point having Coordinates of X = 1,521,758.00 and Y = 679,518.00; thence South 7,920.00 feet to a point having Coordinates of X = 1,521,758.00 and Y = 671,598.00; thence West 18,480.00 feet to a point having Coordinates of X = 1,503,278.00 and Y = 671,598.00; thence North 7,920.00 feet to a point having Coordinates of X = 1,503,278.00 and Y = 679,518.00; thence East 10,560.00 feet to the point of beginning, containing approximately **66 acres**, all as more particularly outlined on a plat on file in the Office of Mineral Resources, Department of Natural Resources. All bearings, distances and coordinates are based on Louisiana Coordinate System of 1927, (North or South Zone), where applicable.

NOTE: The above description of the Tract nominated for lease has been provided and corrected, where required, exclusively by the nomination party. Any mineral lease selected from this Tract and awarded by the Louisiana State Mineral Board shall be without warranty of any kind, either express, implied, or statutory, including, but not limited to, the implied warranties of merchantability and fitness for a particular purpose. Should the mineral lease awarded by the Louisiana State Mineral Board be subsequently modified, cancelled or abrogated due to the existence of conflicting leases, operating agreements, private claims or other future obligations or conditions which may affect all or any portion of the leased Tract, it shall not relieve the Lessee of the obligation to pay any bonus due thereon to the Louisiana State Mineral Board, nor shall the Louisiana State Mineral Board be obligated to refund any consideration paid by the Lessor prior to such modification, cancellation, or abrogation, including, but not limited to, bonuses, rentals and royalties.

Applicant: Theophilus Oil Gas & Land Services, LLC

Bidder	Cash Payment	Price/ Acre	Rental	Oil	Gas	Other



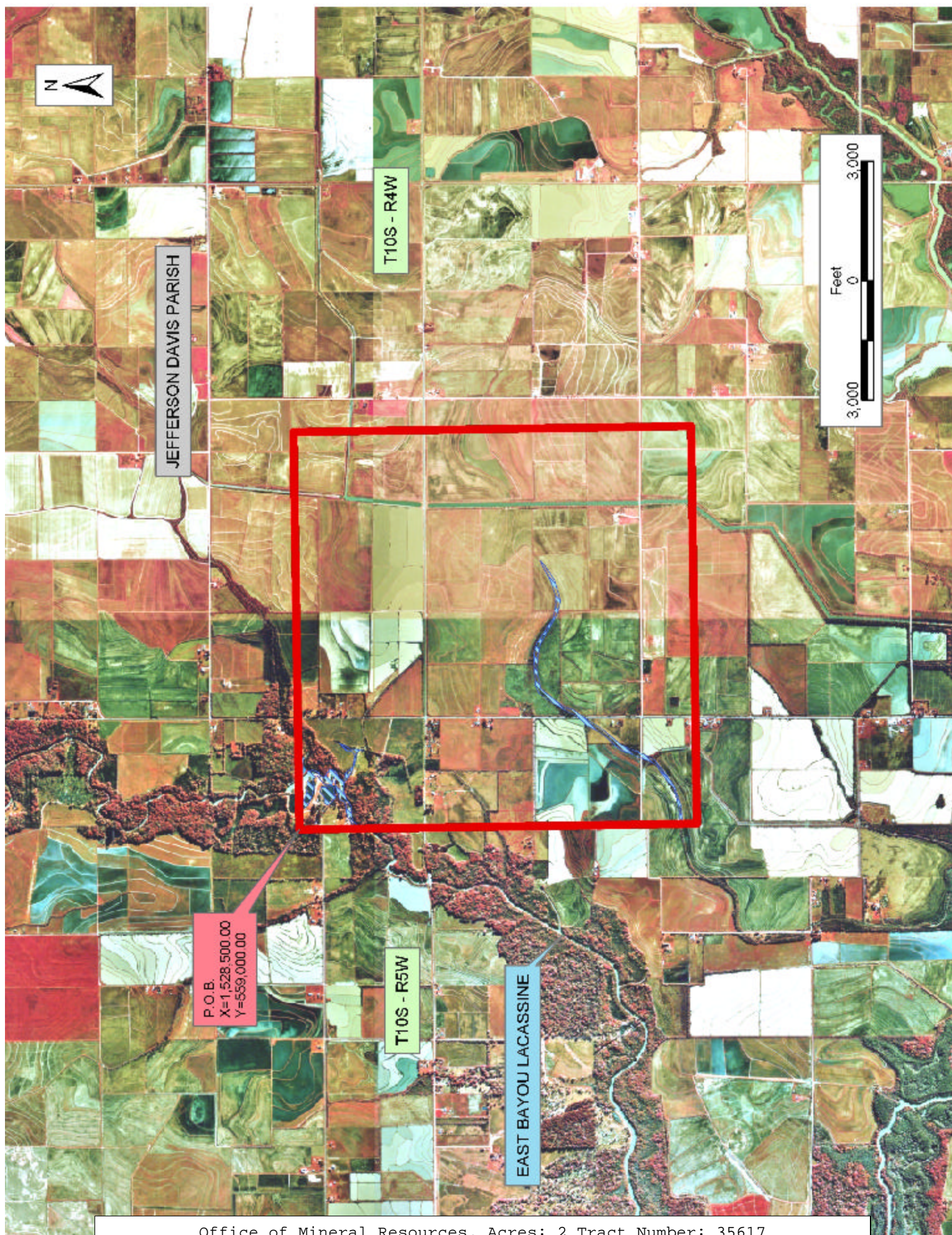
TRACT 35617 - Jefferson Davis Parish, Louisiana

All of the lands now or formerly constituting the beds and bottoms of all water bodies of every nature and description the title of which vests in the State of Louisiana, together with all islands arising therein and other lands formed by accretion or by reliction, where allowed by law, excepting tax adjudicated lands, and not presently under mineral lease on September 10, 2003, situated in Jefferson Davis Parish, Louisiana, and more particularly described as follows: Beginning at a point having Coordinates of X = 1,528,500.00 and Y = 559,000.00; thence East 10,000.00 feet to a point having Coordinates of X = 1,538,500.00 and Y = 559,000.00; thence South 10,000.00 feet to a point having Coordinates of X = 1,538,500.00 and Y = 549,000.00; thence West 10,000.00 feet to a point having Coordinates of X = 1,528,500.00 and Y = 549,000.00; thence North 10,000.00 feet to the point of beginning, containing approximately **2 acres**, all as more particularly outlined on a plat on file in the Office of Mineral Resources, Department of Natural Resources. All bearings, distances and coordinates are based on Louisiana Coordinate System of 1927, (North or South Zone), where applicable.

NOTE: The above description of the Tract nominated for lease has been provided and corrected, where required, exclusively by the nomination party. Any mineral lease selected from this Tract and awarded by the Louisiana State Mineral Board shall be without warranty of any kind, either express, implied, or statutory, including, but not limited to, the implied warranties of merchantability and fitness for a particular purpose. Should the mineral lease awarded by the Louisiana State Mineral Board be subsequently modified, cancelled or abrogated due to the existence of conflicting leases, operating agreements, private claims or other future obligations or conditions which may affect all or any portion of the leased Tract, it shall not relieve the Lessee of the obligation to pay any bonus due thereon to the Louisiana State Mineral Board, nor shall the Louisiana State Mineral Board be obligated to refund any consideration paid by the Lessor prior to such modification, cancellation, or abrogation, including, but not limited to, bonuses, rentals and royalties.

Applicant: Theophilus Oil Gas & Land Services, LLC.

Bidder	Cash Payment	Price/ Acre	Rental	Oil	Gas	Other



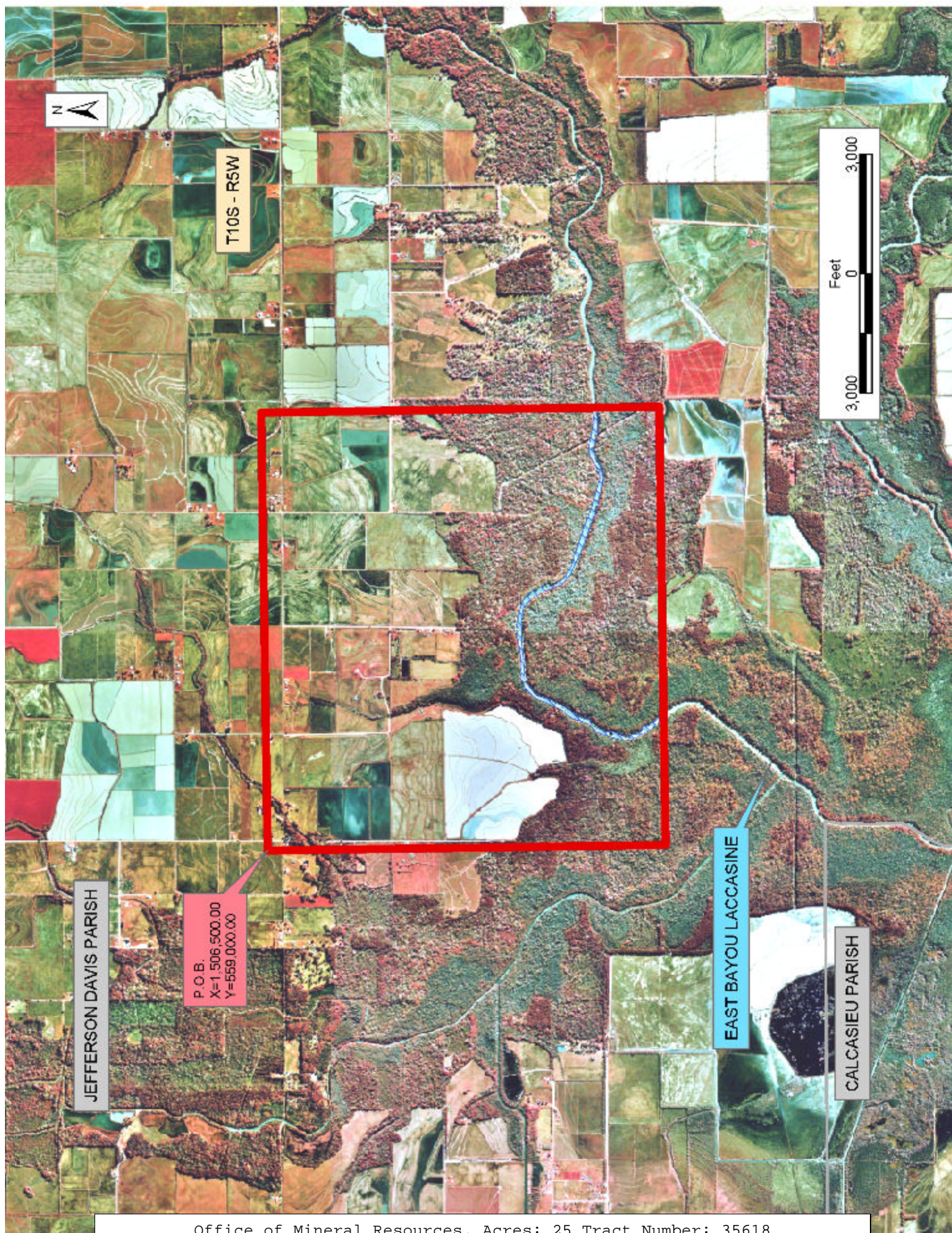
TRACT 35618 - Jefferson Davis Parish, Louisiana

All of the lands now or formerly constituting the beds and bottoms of all water bodies of every nature and description the title of which vests in the State of Louisiana, together with all islands arising therein and other lands formed by accretion or by reliction, where allowed by law, excepting tax adjudicated lands, and not presently under mineral lease on September 10, 2003, situated in Jefferson Davis Parish, Louisiana, and more particularly described as follows: Beginning at a point having Coordinates of X = 1,506,500.00 and Y = 559,000.00; thence East 11,000.00 feet to a point having Coordinates of X = 1,517,500.00 and Y = 559,000.00; thence South 10,000.00 feet to a point having Coordinates of X = 1,517,500.00 and Y = 549,000.00; thence West 11,000.00 feet to a point having Coordinates of X = 1,506,500.00 and Y = 549,000.00; thence North 10,000.00 feet to the point of beginning, containing approximately **25 acres**, all as more particularly outlined on a plat on file in the Office of Mineral Resources, Department of Natural Resources. All bearings, distances and coordinates are based on Louisiana Coordinate System of 1927, (North or South Zone), where applicable.

NOTE: The above description of the Tract nominated for lease has been provided and corrected, where required, exclusively by the nomination party. Any mineral lease selected from this Tract and awarded by the Louisiana State Mineral Board shall be without warranty of any kind, either express, implied, or statutory, including, but not limited to, the implied warranties of merchantability and fitness for a particular purpose. Should the mineral lease awarded by the Louisiana State Mineral Board be subsequently modified, cancelled or abrogated due to the existence of conflicting leases, operating agreements, private claims or other future obligations or conditions which may affect all or any portion of the leased Tract, it shall not relieve the Lessee of the obligation to pay any bonus due thereon to the Louisiana State Mineral Board, nor shall the Louisiana State Mineral Board be obligated to refund any consideration paid by the Lessor prior to such modification, cancellation, or abrogation, including, but not limited to, bonuses, rentals and royalties.

Applicant: Theophilus Oil Gas & Land Services, LLC.

Bidder	Cash Payment	Price/ Acre	Rental	Oil	Gas	Other



TRACT 35619 - Jefferson Davis Parish, Louisiana

All of the lands now or formerly constituting the beds and bottoms of all water bodies of every nature and description the title of which vests in the State of Louisiana, together with all islands arising therein and other lands formed by accretion or by reliction, where allowed by law, excepting tax adjudicated lands, and not presently under mineral lease on September 10, 2003, situated in Jefferson Davis Parish, Louisiana, and more particularly described as follows: Beginning at a point having Coordinates of X = 1,517,500.00 and Y = 559,000.00; thence East 11,000.00 feet to a point having Coordinates of X = 1,528,500.00 and Y = 559,000.00; thence South 10,000.00 feet to a point having Coordinates of X = 1,528,500.00 and Y = 549,000.00; thence West 11,000.00 feet to a point having Coordinates of X = 1,517,500.00 and Y = 549,000.00; thence North 10,000.00 feet to the point of beginning, containing approximately **14 acres**, all as more particularly outlined on a plat on file in the Office of Mineral Resources, Department of Natural Resources. All bearings, distances and coordinates are based on Louisiana Coordinate System of 1927, (North or South Zone), where applicable.

NOTE: The above description of the Tract nominated for lease has been provided and corrected, where required, exclusively by the nomination party. Any mineral lease selected from this Tract and awarded by the Louisiana State Mineral Board shall be without warranty of any kind, either express, implied, or statutory, including, but not limited to, the implied warranties of merchantability and fitness for a particular purpose. Should the mineral lease awarded by the Louisiana State Mineral Board be subsequently modified, cancelled or abrogated due to the existence of conflicting leases, operating agreements, private claims or other future obligations or conditions which may affect all or any portion of the leased Tract, it shall not relieve the Lessee of the obligation to pay any bonus due thereon to the Louisiana State Mineral Board, nor shall the Louisiana State Mineral Board be obligated to refund any consideration paid by the Lessor prior to such modification, cancellation, or abrogation, including, but not limited to, bonuses, rentals and royalties.

Applicant: Theophilus Oil Gas & Land Services, LLC.

Bidder	Cash Payment	Price/ Acre	Rental	Oil	Gas	Other

