

TRACT 34806 - Portion of Block 16, Vermilion Area, Revised, Vermilion Parish, Louisiana

That portion of Block 16, Vermilion Area, Revised, Vermilion Parish, Louisiana, belonging to the State of Louisiana and not presently under mineral lease on September 11, 2002, being more fully described as follows: Beginning at the Northeast corner of said Block 16 having Coordinates of X = 1,662,140.22 and Y = 317,582.82; thence South 13,549.69 feet on the East line of said Block 16 to a point having Coordinates of X = 1,662,140.22 and Y = 304,033.13; thence Northwesterly on a straight line to a point having Coordinates of X = 1,661,678 and Y = 304,151; thence Northwesterly on a straight line to a point having Coordinates of X = 1,659,494 and Y = 304,616; thence Northwesterly on an arc having a radius of 18,240.60 feet and a center at X = 1,663,290 and Y = 322,457 to a point having Coordinates of X = 1,659,476 and Y = 304,620; thence Northwesterly on a straight line to a point having Coordinates of X = 1,658,120 and Y = 304,910; thence Northwesterly on an arc having a radius of 18,240.60 feet and a center at X = 1,658,887 and Y = 323,134 to a point having Coordinates of X = 1,656,354 and Y = 305,070; thence Northwesterly on an arc having a radius of 18,240.60 feet and a center at X = 1,655,896 and Y = 323,305 to a point having Coordinates of X = 1,652,650 and Y = 305,356; thence Northwesterly on a straight line to a point having Coordinates of X = 1,650,184 and Y = 305,802; thence Northwesterly on an arc having a radius of 18,240.60 feet and a center at X = 1,653,430 and Y = 323,751 to a point having Coordinates of X = 1,648,635 and Y = 306,152; thence Northwesterly on a straight line to a point on the West line of said Block 16, also being the Southwest corner of State Lease No. 17159 having Coordinates of X = 1,647,382.17 and Y = 306,493.68; thence along the boundary of said State Lease No. 17159 the following courses: North 68 degrees 16 minutes 01 seconds East 9,658.35 feet and North 3,721.90 feet to its Northeast corner, also being a point on the Southern boundary of State Lease No. 3763, as amended, having Coordinates of X = 1,656,354.00 and Y = 313,791.90; thence along the Southern boundary of said State Lease No. 3763 the following courses: North 56 degrees 25 minutes 24 seconds East 1,047.66 feet, North 87 degrees 18 minutes 26 seconds East 596.22 feet, North 58 degrees 44 minutes 03 seconds East 1,687.27 feet, North 59 degrees 16 minutes 15 seconds East 1,025.81 feet, North 54 degrees 35 minutes 36 seconds East 780.63 feet, North 50 degrees 50 minutes 26 seconds East 743.10, and North 20 degrees 42 minutes 30 seconds East 921.63 feet to its Northeast corner, also being a point on the North line of said Block 16 having Coordinates of X = 1,661,684.76 and Y = 317,582.82; thence East 455.46 feet to the point of beginning, containing approximately **1,991.84 acres**, all as more particularly outlined on a plat on file in the Office of Mineral Resources, Department of Natural Resources, as provided by the applicant, **LESS AND EXCEPT** that portion thereof, if any, lying seaward of the line three nautical miles from the coast line of Louisiana, as said three mile line has been decreed by the Supreme Court of the United States, as determined by a Special Master appointed therein, in litigation styled **United States v. State of Louisiana et al No. 9 Original**, in 1975. All bearings, distances and

coordinates are based on Louisiana Coordinate System of 1927, (North or South Zone).

NOTE: The above description of the Tract nominated for lease has been provided and corrected, where required, exclusively by the nomination party. Any mineral lease selected from this Tract and awarded by the Louisiana State Mineral Board shall be without warranty of any kind, either express, implied, or statutory, including, but not limited to, the implied warranties of merchantability and fitness for a particular purpose. Should the mineral lease awarded by the Louisiana State Mineral Board be subsequently modified, cancelled or abrogated due to the existence of conflicting leases, operating agreements, private claims or other future obligations or conditions which may affect all or any portion of the leased Tract, it shall not relieve the Lessee of the obligation to pay any bonus due thereon to the Louisiana State Mineral Board, nor shall the Louisiana State Mineral Board be obligated to refund any consideration paid by the Lessor prior to such modification, cancellation, or abrogation, including, but not limited to, bonuses, rentals and royalties.

NOTE: The State of Louisiana does hereby reserve, and this lease shall be subject to, the imprescriptible right of surface use in the nature of a servitude in favor of the Department of Natural Resources, including its Offices and Commissions, for the sole purpose of implementing, constructing, servicing and maintaining approved coastal zone management and/or restoration projects. Utilization of any and all rights derived under this lease by the mineral lessee, its agents, successors or assigns, shall not interfere with nor hinder the reasonable surface use by the Department of Natural Resources, its Offices or Commissions, as herein above reserved.

Applicant: Woodland Petroleum Corporation

Bidder	Cash Payment	Price / Acre	Rental	Oil	Gas	Other

9

BIK. 4

SL 3842,
As Amended

BIK. 5

P.O.B.
X = 1,662,140.22
Y = 317,582.82

SL 3624,
As Amended

BIK. 6

SL 3763, As Amended

BIK. 14

SL 17159

BIK. 16

TR 34806
1,991.84 ± ACS.
SEPT., 2002

LA
USA

BIK. 15

SL 15040,
As Amended

BIK. 24

BIK. 25

VERMILION AREA, REVISED

BIK. 26

G U L F O F M E X I C O

NAD 27
LAMBERT LA. SOUTH ZONE

Vermilion Parish, Louisiana



TRACT 34807 - Portion of Block 15, Vermilion Area, Revised, Vermilion Parish, Louisiana

That portion of Block 15, Vermilion Area, Revised, Vermilion Parish, Louisiana, belonging to the State of Louisiana and not presently under mineral lease on September 11, 2002, being more fully described as follows: Beginning at the Northwest corner of Block 15, Vermilion Area, Revised, having Coordinates of X = 1,662,140.22 and Y = 311,024.77; thence East 14,758.05 feet along the North line of said Block 15 to its Northeast corner having Coordinates of X = 1,676,898.27 and Y = 311,024.77; thence South 2,450.00 feet along the East line of said Block 15 to a point, also being the Northeast corner of State Lease No. 15040, as amended, having Coordinates of X = 1,676,898.27 and Y = 308,574.77; thence along the boundary of said State Lease No. 15040 the following courses: West 12,000.00 feet, South 2,500.00 feet, East 3,500.00 feet, South 1,200.00 feet and East 4,810.49 feet to a point on the South line of said State Lease No. 15040, also being the Northwest corner of State Lease No. 862, as amended, having Coordinates of X = 1,673,208.76 and Y = 304,874.77; thence South 2,050.00 feet along the West line of said State Lease No. 862 to its Southwest corner, also being a point on the South line of said Block 15 having Coordinates of X = 1,673,208.76 and Y = 302,824.77; thence West 7,085.53 feet along the South line of said Block 15 to a point having Coordinates of X = 1,666,123.23 and Y = 302,824.77; thence Northwesterly on an arc having a radius of 18,240.60 feet and a center at X = 1,671,018 and Y = 320,396 to a point having Coordinates of X = 1,665,216 and Y = 303,103; thence Northwesterly on a straight line to a point having Coordinates of X = 1,663,698 and Y = 303,612; thence Northwesterly on a straight line to a point having Coordinates of X = 1,662,427 and Y = 303,960; thence Northwesterly on a straight line to a point on the West line of said Block 15 having Coordinates of X = 1,662,140.22 and Y = 304,033.13; thence North 6,991.64 feet along the West line of said Block 15 to the point of beginning, containing approximately **1,624.51 acres**, all as more particularly outlined on a plat on file in the Office of Mineral Resources, Department of Natural Resources, as provided by the applicant, **LESS AND EXCEPT** that portion thereof, if any, lying seaward of the line three nautical miles from the coast line of Louisiana, as said three mile line has been decreed by the Supreme Court of the United States, as determined by a Special Master appointed therein, in litigation styled **United States v. State of Louisiana et al No. 9 Original**, in 1975. All bearings, distances and coordinates are based on Louisiana Coordinate System of 1927, (North or South Zone).

NOTE: The above description of the Tract nominated for lease has been provided and corrected, where required, exclusively by the nomination party. Any mineral lease selected from this Tract and awarded by the Louisiana State Mineral Board shall be without warranty of any kind, either express, implied, or statutory, including, but not limited to, the implied warranties of merchantability and fitness for a particular purpose. Should the mineral lease awarded by the Louisiana State Mineral Board be subsequently modified, cancelled or abrogated due to the existence of conflicting leases, operating agreements, private claims or

other future obligations or conditions which may affect all or any portion of the leased Tract, it shall not relieve the Lessee of the obligation to pay any bonus due thereon to the Louisiana State Mineral Board, not shall the Louisiana State Mineral Board be obligated to refund any consideration paid by the Lessor prior to such modification, cancellation, or abrogation, including, but not limited to, bonuses, rentals and royalties.

NOTE: The State of Louisiana does hereby reserve, and this lease shall be subject to, the imprescriptible right of surface use in the nature of a servitude in favor of the Department of Natural Resources, including its Offices and Commissions, for the sole purpose of implementing, constructing, servicing and maintaining approved coastal zone management and/or restoration projects. Utilization of any and all rights derived under this lease by the mineral lessee, its agents, successors or assigns, shall not interfere with nor hinder the reasonable surface use by the Department of Natural Resources, its Offices or Commissions, as herein above reserved.

Applicant: Woodland Petroleum Corporation

Bidder	Cash Payment	Price / Acre	Rental	Oil	Gas	Other

12

Bik. 5

Bik. 6

Bik. 7

TR 34807
1,624.51 ± ACS.
SEPT., 2002

P. O. B.
X=1,662,140.22
Y= 311,024.77

Bik. 16

Bik. 15

SL 15040, As Amended

Bik. 14

LA
USA

SL 862,
As Amended

Bik. 25

Bik. 26

VERMILION AREA, REVISED

Bik. 27

GULF OF MEXICO

Vermilion Parish, Louisiana

4000' 0' 4000'

NAD 27 LAMBERT LA. SOUTH ZONE

TRACT 34808 - PORTION OF BLOCK 28, VERMILION AREA, REVISED, Vermilion Parish, Louisiana

That portion of Block 28, Vermilion Area, Revised, Vermilion Parish, Louisiana, belonging to the State of Louisiana and not presently under mineral lease on September 11, 2002, being more fully described as follows: Beginning at the Northwest corner of Block 28, Vermilion Area, Revised, having Coordinates of X = 1,691,656.32 and Y = 302,824.77; thence East 1,950.00 feet along the North line of said Block 28 to the most North Northwest corner of State Lease No. 7601, as amended, having Coordinates of X = 1,693,606.32 and Y = 302,824.77; thence along the boundaries of said State Lease No. 7601 the following: South 900.01 feet to a point having Coordinates of X = 1,693,606.32 and Y = 301,924.76 and West 1,950.00 feet to a point on the West line of said Block 28 having Coordinates of X = 1,691,656.32 and Y = 301,924.76; thence North 900.01 feet along the West line of said Block 28 to the point of beginning, containing approximately **40.29 acres**, all as more particularly outlined on a plat on file in the Office of Mineral Resources, Department of Natural Resources, as provided by the applicant. All bearings, distances and coordinates are based on Louisiana Coordinate System of 1927, (North or South Zone).

NOTE: The above description of the Tract nominated for lease has been provided and corrected, where required, exclusively by the nomination party. Any mineral lease selected from this Tract and awarded by the Louisiana State Mineral Board shall be without warranty of any kind, either express, implied, or statutory, including, but not limited to, the implied warranties of merchantability and fitness for a particular purpose. Should the mineral lease awarded by the Louisiana State Mineral Board be subsequently modified, cancelled or abrogated due to the existence of conflicting leases, operating agreements, private claims or other future obligations or conditions which may affect all or any portion of the leased Tract, it shall not relieve the Lessee of the obligation to pay any bonus due thereon to the Louisiana State Mineral Board, nor shall the Louisiana State Mineral Board be obligated to refund any consideration paid by the Lessor prior to such modification, cancellation, or abrogation, including, but not limited to, bonuses, rentals and royalties.

NOTE: The Department of Wildlife and Fisheries has designated certain areas in the coastal waters of the State of Louisiana as Oyster Seed Bed Areas. The exact location of those Seed Bed Areas must be obtained from the Department of Wildlife and Fisheries and any work done under a mineral lease from the State of Louisiana may necessarily be conducted in conformity with the rules and regulations promulgated by the said Department of Wildlife and Fisheries for Oyster Seed Bed Areas.

NOTE: The State of Louisiana does hereby reserve, and this lease shall be subject to, the imprescriptible right of surface use in the nature of a servitude in favor of the Department of Natural Resources, including its Offices and Commissions, for the sole purpose of implementing, constructing, servicing and maintaining approved coastal zone management

and/or restoration projects. Utilization of any and all rights derived under this lease by the mineral lessee, its agents, successors or assigns, shall not interfere with nor hinder the reasonable surface use by the Department of Natural Resources, its Offices or Commissions, as herein above reserved.

Applicant: Leslie L. Moore

Bidder	Cash Payment	Price / Acre	Rental	Oil	Gas	Other

VERMILION AREA, REVISED

Vermilion Parish, Louisiana



0 1000 2000 3000 4000

Scale: 1" = 4,000'

TR 34808
40.29 ± ACS.
SEPT., 2002

P.O.B.
X = 1,691,656.32
Y = 302,824.77

Block 13

SL 7601

SL 8681

LA

USA

Block 27

Block 28

Block 29

TRACT 34809 - Portion of Block 28, Vermilion Area, Revised, Vermilion Parish, Louisiana

That portion of Block 28, Vermilion Area, Revised, Vermilion Parish, Louisiana, belonging to the State of Louisiana and not presently under mineral lease on September 11, 2002, being more fully described as follows: Beginning at the Southwest corner of State Lease No. 7601, as amended, and a point on the West line of said Block 28 having Coordinates of $X = 1,691,656.32$ and $Y = 299,324.76$; thence East 1,380.00 feet along the South line of said State Lease No. 7601 to the Northwest corner of State Lease No. 8681, as amended having Coordinates of $X = 1,693,036.32$ and $Y = 299,324.76$; thence South along the West line of said State Lease No. 8681 to its Southwest corner and the intersection of the three mile line as set out in the June, 1975 decree of the Supreme Court, having Coordinates of $X = 1,693,036.32$ and $Y = 297,746.12$; thence Northwesterly on a straight line to a point having Coordinates of $X = 1,692,448.00$ and $Y = 297,750.00$; thence Northwesterly along a curve (having a start point at $X = 1,691,302.00$ and $Y = 297,793.00$, an end point at $X = 1,692,448.00$ and $Y = 297,750.00$ and a radius of 18,240.60) to its point of intersection with a point having Coordinates of $X = 1,691,656.32$ and $Y = 297,772.00$, a point on the West line of said Block 28; thence North along the West line of said Block 28 to the point of beginning, containing approximately **49.77 acres**, all as more particularly outlined on a plat on file in the Office of Mineral Resources, Department of Natural Resources, as provided by the applicant, **LESS AND EXCEPT** that portion thereof, if any, lying seaward of the line three nautical miles from the coast line of Louisiana, as said three mile line has been decreed by the Supreme Court of the United States, as determined by a Special Master appointed therein, in litigation styled **United States v. State of Louisiana et al No. 9 Original**, in 1975. All bearings, distances and coordinates are based on Louisiana Coordinate System of 1927, (North or South Zone).

NOTE: The above description of the Tract nominated for lease has been provided and corrected, where required, exclusively by the nomination party. Any mineral lease selected from this Tract and awarded by the Louisiana State Mineral Board shall be without warranty of any kind, either express, implied, or statutory, including, but not limited to, the implied warranties of merchantability and fitness for a particular purpose. Should the mineral lease awarded by the Louisiana State Mineral Board be subsequently modified, cancelled or abrogated due to the existence of conflicting leases, operating agreements, private claims or other future obligations or conditions which may affect all or any portion of the leased Tract, it shall not relieve the Lessee of the obligation to pay any bonus due thereon to the Louisiana State Mineral Board, nor shall the Louisiana State Mineral Board be obligated to refund any consideration paid by the Lessor prior to such modification, cancellation, or abrogation, including, but not limited to, bonuses, rentals and royalties.

NOTE: The Department of Wildlife and Fisheries has designated certain areas in the coastal waters of the State of Louisiana as Oyster Seed Bed Areas. The exact location of those Seed Bed Areas must be obtained from

the Department of Wildlife and Fisheries and any work done under a mineral lease from the State of Louisiana may necessarily be conducted in conformity with the rules and regulations promulgated by the said Department of Wildlife and Fisheries for Oyster Seed Bed Areas.

NOTE: The State of Louisiana does hereby reserve, and this lease shall be subject to, the imprescriptible right of surface use in the nature of a servitude in favor of the Department of Natural Resources, including its Offices and Commissions, for the sole purpose of implementing, constructing, servicing and maintaining approved coastal zone management and/or restoration projects. Utilization of any and all rights derived under this lease by the mineral lessee, its agents, successors or assigns, shall not interfere with nor hinder the reasonable surface use by the Department of Natural Resources, its Offices or Commissions, as herein above reserved.

Applicant: Leslie L. Moore

Bidder	Cash Payment	Price / Acre	Rental	Oil	Gas	Other

VERMILION AREA, REVISED

Vermilion Parish, Louisiana



0 1000 2000 3000 4000

Scale: 1" = 4,000'

Block 13

TR 34809
49.77 ± ACS.
SEPT., 2002

P.O.B
X = 1,691,656.32
Y = 299,324.76

SL 7601

SL 8681

LA
USA

Block 27

Block 29

Block 28

TRACT 34810 - Portion of Block 25, Ship Shoal Area, Terrebonne Parish, Louisiana

That portion of Block 25, Ship Shoal Area, Terrebonne Parish, Louisiana, belonging to the State of Louisiana and not presently under mineral lease on September 11, 2002, being more fully described as follows: Beginning at the Northeast corner of Block 25, Ship Shoal Area, having Coordinates of X = 2,109,200.00 and Y = 169,476.60; thence South 4,287.05 feet along the East line of said Block 25 to a point having Coordinates of X = 2,109,200.00 and Y = 165,189.55; thence Northwesterly on an arc having a radius of 18,240.60 feet and a center at X = 2,106,412 and Y = 183,216 to a point having Coordinates of X = 2,102,599 and Y = 165,378; thence Northwesterly on an arc having a radius of 18,240.60 feet and a center at X = 2,103,313 and Y = 183,605 to a point having Coordinates of X = 2,095,246 and Y = 167,245; thence Northwesterly on an arc having a radius of 18,240.60 feet and a center at X = 2,098,954 and Y = 185,105 to a point having Coordinates of X = 2,095,140 and Y = 167,268; thence Northwesterly on a straight line to a point on the West line of said Block 25 having Coordinates of X = 2,093,600.00 and Y = 167,597.31; thence North 1,879.29 feet along the West line of said Block 25 to its Northwest corner having Coordinates of X = 2,093,600.00 and Y = 169,476.60; thence East 15,600.00 feet along the North line of said Block 25 to the point of beginning, containing approximately **1,324.22 acres**, all as more particularly outlined on a plat on file in the Office of Mineral Resources, Department of Natural Resources, as provided by the applicant, **LESS AND EXCEPT** that portion thereof, if any, lying seaward of the line three nautical miles from the coast line of Louisiana, as said three mile line has been decreed by the Supreme Court of the United States, as determined by a Special Master appointed therein, in litigation styled **United States v. State of Louisiana et al No. 9 Original**, in 1975. All bearings, distances and coordinates are based on Louisiana Coordinate System of 1927, (North or South Zone).

NOTE: The above description of the Tract nominated for lease has been provided and corrected, where required, exclusively by the nomination party. Any mineral lease selected from this Tract and awarded by the Louisiana State Mineral Board shall be without warranty of any kind, either express, implied, or statutory, including, but not limited to, the implied warranties of merchantability and fitness for a particular purpose. Should the mineral lease awarded by the Louisiana State Mineral Board be subsequently modified, cancelled or abrogated due to the existence of conflicting leases, operating agreements, private claims or other future obligations or conditions which may affect all or any portion of the leased Tract, it shall not relieve the Lessee of the obligation to pay any bonus due thereon to the Louisiana State Mineral Board, nor shall the Louisiana State Mineral Board be obligated to refund any consideration paid by the Lessor prior to such modification, cancellation, or abrogation, including, but not limited to, bonuses, rentals and royalties.

NOTE: The State of Louisiana does hereby reserve, and this lease shall be subject to, the imprescriptible right of surface use in the nature of a

servitude in favor of the Department of Natural Resources, including its Offices and Commissions, for the sole purpose of implementing, constructing, servicing and maintaining approved coastal zone management and/or restoration projects. Utilization of any and all rights derived under this lease by the mineral lessee, its agents, successors or assigns, shall not interfere with nor hinder the reasonable surface use by the Department of Natural Resources, its Offices or Commissions, as herein above reserved.

Applicant: Woodland Petroleum Corporation

Bidder	Cash Payment	Price / Acre	Rental	Oil	Gas	Other

BIK. 18

BIK. 19

BIK. 17

BIK. 26

BIK. 25 SHIP SHOAL AREA
GULF OF MEXICO

BIK. 24

21

P. O. B.
X=2,109,200.00
Y= 169,476.60

TR 34810
1,324.22 ± ACS,
SEPT., 2002

LA
USA

NAD 27
LAMBERT LA. SOUTH ZONE

Terrebonne Parish, Louisiana



TRACT 34811 - Portion of Block 25, Ship Shoal Area, Terrebonne Parish, Louisiana

That portion of Block 25, Ship Shoal Area, Terrebonne Parish, Louisiana, belonging to the State of Louisiana and not presently under mineral lease on September 11, 2002, being more fully described as follows: Beginning at a point on the Southeast corner of Block 25, Ship Shoal Area, having Coordinates of X = 2,109,200.00 and Y = 155,515.07; thence West 5,599.29 feet on the South line of said Block 25 to a point having Coordinates of X = 2,103,600.71 and Y = 155,515.07; thence Northeasterly on an arc having a radius of 18,240.60 feet and a center at X = 2,117,317 and Y = 143,491 to a point on the East line of said Block 25 having Coordinates of X = 2,109,200.00 and Y = 159,825.97; thence South 4,310.90 feet to the point of beginning, containing approximately **314.50 acres**, all as more particularly outlined on a plat on file in the Office of Mineral Resources, Department of Natural Resources, as provided by the applicant, **LESS AND EXCEPT** that portion thereof, if any, lying seaward of the line three nautical miles from the coast line of Louisiana, as said three mile line has been decreed by the Supreme Court of the United States, as determined by a Special Master appointed therein, in litigation styled **United States v. State of Louisiana et al No. 9 Original**, in 1975. All bearings, distances and coordinates are based on Louisiana Coordinate System of 1927, (North or South Zone).

NOTE: The above description of the Tract nominated for lease has been provided and corrected, where required, exclusively by the nomination party. Any mineral lease selected from this Tract and awarded by the Louisiana State Mineral Board shall be without warranty of any kind, either express, implied, or statutory, including, but not limited to, the implied warranties of merchantability and fitness for a particular purpose. Should the mineral lease awarded by the Louisiana State Mineral Board be subsequently modified, cancelled or abrogated due to the existence of conflicting leases, operating agreements, private claims or other future obligations or conditions which may affect all or any portion of the leased Tract, it shall not relieve the Lessee of the obligation to pay any bonus due thereon to the Louisiana State Mineral Board, nor shall the Louisiana State Mineral Board be obligated to refund any consideration paid by the Lessor prior to such modification, cancellation, or abrogation, including, but not limited to, bonuses, rentals and royalties.

NOTE: The State of Louisiana does hereby reserve, and this lease shall be subject to, the imprescriptible right of surface use in the nature of a servitude in favor of the Department of Natural Resources, including its Offices and Commissions, for the sole purpose of implementing, constructing, servicing and maintaining approved coastal zone management and/or restoration projects. Utilization of any and all rights derived under this lease by the mineral lessee, its agents, successors or assigns, shall not interfere with nor hinder the reasonable surface use by the Department of Natural Resources, its Offices or Commissions, as herein above reserved.

Applicant: Woodland Petroleum Corporation

Bidder	Cash Payment	Price / Acre	Rental	Oil	Gas	Other

BIK. 25

TR 34811
314.50 ± ACS.
SEPT., 2002

BIK. 24

P.O.B.
X=2, 109, 200.00
Y= 155, 515.07

USA
LA

BIK. 38

BIK. 39

SHIP SHOAL AREA
GULF OF MEXICO

24

Terrebonne Parish, Louisiana

2000' 0' 2000'

TRACT 34812 - Portion of Block 38, Ship Shoal Area, Terrebonne Parish, Louisiana

That portion of Block 38, Ship Shoal Area, Terrebonne Parish, Louisiana, belonging to the State of Louisiana and not presently under mineral lease on September 11, 2002, being more fully described as follows: Beginning at a point on the East line of Block 38, Ship Shoal Area, having Coordinates of X = 2,109,200.00 and Y = 148,534.30; thence West 9,412.36 feet to a point having Coordinates of X = 2,099,787.64 and Y = 148,534.30; thence Northeasterly on an arc having a radius of 18,240.60 feet and a center at X = 2,117,317 and Y = 143,491 to a point on the North line of said Block 38 having Coordinates of X = 2,103,600.71 and Y = 155,515.07; thence East 5,599.29 feet along the North line of said Block 38 to its Northeast corner having Coordinates of X = 2,109,200.00 and Y = 155,515.07; thence South 6,980.77 feet along the East line of said Block 38 to the point of beginning, containing approximately **1,256.41 acres**, all as more particularly outlined on a plat on file in the Office of Mineral Resources, Department of Natural Resources, as provided by the applicant, **LESS AND EXCEPT** that portion thereof, if any, lying seaward of the line three nautical miles from the coast line of Louisiana, as said three mile line has been decreed by the Supreme Court of the United States, as determined by a Special Master appointed therein, in litigation styled **United States v. State of Louisiana et al No. 9 Original**, in 1975. All bearings, distances and coordinates are based on Louisiana Coordinate System of 1927, (North or South Zone).

NOTE: The above description of the Tract nominated for lease has been provided and corrected, where required, exclusively by the nomination party. Any mineral lease selected from this Tract and awarded by the Louisiana State Mineral Board shall be without warranty of any kind, either express, implied, or statutory, including, but not limited to, the implied warranties of merchantability and fitness for a particular purpose. Should the mineral lease awarded by the Louisiana State Mineral Board be subsequently modified, cancelled or abrogated due to the existence of conflicting leases, operating agreements, private claims or other future obligations or conditions which may affect all or any portion of the leased Tract, it shall not relieve the Lessee of the obligation to pay any bonus due thereon to the Louisiana State Mineral Board, nor shall the Louisiana State Mineral Board be obligated to refund any consideration paid by the Lessor prior to such modification, cancellation, or abrogation, including, but not limited to, bonuses, rentals and royalties.

NOTE: The State of Louisiana does hereby reserve, and this lease shall be subject to, the imprescriptible right of surface use in the nature of a servitude in favor of the Department of Natural Resources, including its Offices and Commissions, for the sole purpose of implementing, constructing, servicing and maintaining approved coastal zone management and/or restoration projects. Utilization of any and all rights derived under this lease by the mineral lessee, its agents, successors or assigns, shall not interfere with nor hinder the reasonable surface use by the

Department of Natural Resources, its Offices or Commissions, as herein above reserved.

Applicant: Woodland Petroleum Corporation

Bidder	Cash Payment	Price / Acre	Rental	Oil	Gas	Other

SHIP SHOAL AREA
GULF OF MEXICO

BIK. 25

BIK. 24

TR 34812
1,256.41 ± ACS.
SEPT., 2002

BIK. 39

P. O. B.
X=2,109,200.00
Y=148,534.30

BIK. 38

USA
LA

TRACT 34813 - Portion of Block 38, Ship Shoal Area, Terrebonne Parish, Louisiana

That portion of Block 38, Ship Shoal Area, Terrebonne Parish, Louisiana, belonging to the State of Louisiana and not presently under mineral lease on September 11, 2002, being more fully described as follows: Beginning at a point on the East line of Block 38, Ship Shoal Area, having Coordinates of X = 2,109,200.00 and Y = 148,534.30; thence South 6,980.77 feet along the East line of said Block 38 to its Southeast corner having Coordinates of X = 2,109,200.00 and Y = 141,553.53; thence West 10,020.24 feet along the South line of said Block 38 to a point having Coordinates of X = 2,099,179.76 and Y = 141,553.53; thence Northeasterly on an arc having a radius of 18,240.60 feet and a center at X = 2,117,317 and Y = 143,491 to a point having Coordinates of X = 2,099,787.64 and Y = 148,534.30; thence East 9,412.36 feet to the point of beginning, containing approximately **1,593.59 acres**, all as more particularly outlined on a plat on file in the Office of Mineral Resources, Department of Natural Resources, as provided by the applicant, **LESS AND EXCEPT** that portion thereof, if any, lying seaward of the line three nautical miles from the coast line of Louisiana, as said three mile line has been decreed by the Supreme Court of the United States, as determined by a Special Master appointed therein, in litigation styled **United States v. State of Louisiana et al No. 9 Original**, in 1975. All bearings, distances and coordinates are based on Louisiana Coordinate System of 1927, (North or South Zone).

NOTE: The above description of the Tract nominated for lease has been provided and corrected, where required, exclusively by the nomination party. Any mineral lease selected from this Tract and awarded by the Louisiana State Mineral Board shall be without warranty of any kind, either express, implied, or statutory, including, but not limited to, the implied warranties of merchantability and fitness for a particular purpose. Should the mineral lease awarded by the Louisiana State Mineral Board be subsequently modified, cancelled or abrogated due to the existence of conflicting leases, operating agreements, private claims or other future obligations or conditions which may affect all or any portion of the leased Tract, it shall not relieve the Lessee of the obligation to pay any bonus due thereon to the Louisiana State Mineral Board, nor shall the Louisiana State Mineral Board be obligated to refund any consideration paid by the Lessor prior to such modification, cancellation, or abrogation, including, but not limited to, bonuses, rentals and royalties.

NOTE: The State of Louisiana does hereby reserve, and this lease shall be subject to, the imprescriptible right of surface use in the nature of a servitude in favor of the Department of Natural Resources, including its Offices and Commissions, for the sole purpose of implementing, constructing, servicing and maintaining approved coastal zone management and/or restoration projects. Utilization of any and all rights derived under this lease by the mineral lessee, its agents, successors or assigns, shall not interfere with nor hinder the reasonable surface use by the Department of Natural Resources, its Offices or Commissions, as herein above reserved.

Applicant: Woodland Petroleum Corporation

Bidder	Cash Payment	Price / Acre	Rental	Oil	Gas	Other

USA
LA

BIK. 38

BIK. 39

P. O. B.
X=2,109,200.00
Y= 148,534.30

TR 34813
1,593.59 ± ACS.
SEPT., 2002

BIK. 49

SHIP SHOAL AREA
GULF OF MEXICO

BIK. 48

NAD 27
LAMBERT LA. SOUTH ZONE

30

Terrebonne Parish, Louisiana

2000' 0' 2000'

TRACT 34814 - Portion of Block 49, Ship Shoal Area, Terrebonne Parish, Louisiana

That portion of Block 49, Ship Shoal Area, Terrebonne Parish, Louisiana, belonging to the State of Louisiana and not presently under mineral lease on September 11, 2002, being more fully described as follows: Beginning at the Northeast corner of Block 49, Ship Shoal Area, having Coordinates of X = 2,109,200.00 and Y = 141,553.53; thence South 13,961.54 feet along the East line of said Block 49 to its Southeast corner having Coordinates of X = 2,109,200.00 and Y = 127,591.99; thence West 1,608.23 feet along the South line of said Block 49 to a point having Coordinates of X = 2,107,591.77 and Y = 127,591.99; thence Northwesterly on a straight line to a point having Coordinates of X = 2,107,269 and Y = 127,829; thence Northwesterly on an arc having a radius of 18,240.60 feet and a center at X = 2,118,065 and Y = 142,532 to a point having Coordinates of X = 2,103,682 and Y = 131,314; thence Northwesterly on a straight line to a point having Coordinates of X = 2,102,934 and Y = 132,273; thence Northwesterly on an arc having a radius of 18,240.60 feet and a center at X = 2,117,317 and Y = 143,491 to a point on the North line of said Block 49 having Coordinates of X = 2,099,179.76 and Y = 141,553.53; thence East 10,020.24 feet along the North line of said Block 49 to the point of beginning, containing approximately **2,293.13 acres**, all as more particularly outlined on a plat on file in the Office of Mineral Resources, Department of Natural Resources, as provided by the applicant, **LESS AND EXCEPT** that portion thereof, if any, lying seaward of the line three nautical miles from the coast line of Louisiana, as said three mile line has been decreed by the Supreme Court of the United States, as determined by a Special Master appointed therein, in litigation styled **United States v. State of Louisiana et al No. 9 Original**, in 1975. All bearings, distances and coordinates are based on Louisiana Coordinate System of 1927, (North or South Zone).

NOTE: The above description of the Tract nominated for lease has been provided and corrected, where required, exclusively by the nomination party. Any mineral lease selected from this Tract and awarded by the Louisiana State Mineral Board shall be without warranty of any kind, either express, implied, or statutory, including, but not limited to, the implied warranties of merchantability and fitness for a particular purpose. Should the mineral lease awarded by the Louisiana State Mineral Board be subsequently modified, cancelled or abrogated due to the existence of conflicting leases, operating agreements, private claims or other future obligations or conditions which may affect all or any portion of the leased Tract, it shall not relieve the Lessee of the obligation to pay any bonus due thereon to the Louisiana State Mineral Board, nor shall the Louisiana State Mineral Board be obligated to refund any consideration paid by the Lessor prior to such modification, cancellation, or abrogation, including, but not limited to, bonuses, rentals and royalties.

NOTE: It appears, according to our records, that a portion of this Tract is located within the restrictive safety fairway area as set out by the

Corps of Engineers, U.S. Army and/or the restrictive anchorage area as set out by the U.S. Coast Guard.

NOTE: The State of Louisiana does hereby reserve, and this lease shall be subject to, the imprescriptible right of surface use in the nature of a servitude in favor of the Department of Natural Resources, including its Offices and Commissions, for the sole purpose of implementing, constructing, servicing and maintaining approved coastal zone management and/or restoration projects. Utilization of any and all rights derived under this lease by the mineral lessee, its agents, successors or assigns, shall not interfere with nor hinder the reasonable surface use by the Department of Natural Resources, its Offices or Commissions, as herein above reserved.

Applicant: Woodland Petroleum Corporation

Bidder	Cash Payment	Price / Acre	Rental	Oil	Gas	Other

LA
USA

Bik. 38

Bik. 39

33

P. O. B.
X=2,109,200.00
Y= 141,553.53

TR 34814
2,293.13 ± ACS.
SEPT., 2002

Bik. 48

Bik. 49

SHIP SHOAL AREA
GULF OF MEXICO

NAD 27
LAMBERT LA. SOUTH ZONE

Terrebonne Parish, Louisiana

2000' 0' 2000'

TRACT 34815 - Portion of Block 24, Ship Shoal Area, Terrebonne Parish, Louisiana

That portion of Block 24, Ship Shoal Area, Terrebonne Parish, Louisiana, belonging to the State of Louisiana and not presently under mineral lease on September 11, 2002, being more fully described as follows: Beginning at the Northwest corner of Block 24, Ship Shoal Area, having Coordinates of X = 2,109,200.00 and Y = 169,476.60; thence East 15,600.00 feet along the North line of said Block 24 to its Northeast corner having Coordinates of X = 2,124,800.00 and Y = 169,476.60; thence South 6,976.60 feet along the East line of said Block 24 to a point having Coordinates of X = 2,124,800.00 and Y = 162,500.00; thence West 6,517.33 feet to a point having Coordinates of X = 2,118,282.67 and Y = 162,500.00; thence Northwesterly on an arc having a radius of 18,240.60 feet and a center at X = 2,131,078 and Y = 175,500 to a point having Coordinates of X = 2,117,168 and Y = 163,700; thence Northwesterly on an arc having a radius of 18,240.60 feet and a center at X = 2,128,430 and Y = 178,049 to a point having Coordinates of X = 2,116,319 and Y = 164,410; thence Northwesterly on an arc having a radius of 18,240.60 feet and a center at X = 2,127,239 and Y = 179,020 to a point having Coordinates of X = 2,116,191 and Y = 164,506; thence Northwesterly on an arc having a radius of 18,240.60 feet and a center at X = 2,124,878 and Y = 180,545 to a point having Coordinates of X = 2,114,372 and Y = 165,634; thence Southwesterly on an arc having a radius of 18,240.60 feet and a center at X = 2,111,697 and Y = 183,677 to a point having Coordinates of X = 2,110,623 and Y = 165,468; thence Southwesterly on an arc having a radius of 18,240.60 feet and a center at X = 2,106,412 and Y = 183,216 to a point on the West line of said Block 24 having Coordinates of X = 2,109,200.00 and Y = 165,189.55; thence North 4,287.05 feet along the West line of said Block 24 to the point of beginning, containing approximately **1,992.29 acres**, all as more particularly outlined on a plat on file in the Office of Mineral Resources, Department of Natural Resources, as provided by the applicant, **LESS AND EXCEPT** that portion thereof, if any, lying seaward of the line three nautical miles from the coast line of Louisiana, as said three mile line has been decreed by the Supreme Court of the United States, as determined by a Special Master appointed therein, in litigation styled **United States v. State of Louisiana et al No. 9 Original**, in 1975. All bearings, distances and coordinates are based on Louisiana Coordinate System of 1927, (North or South Zone).

NOTE: The above description of the Tract nominated for lease has been provided and corrected, where required, exclusively by the nomination party. Any mineral lease selected from this Tract and awarded by the Louisiana State Mineral Board shall be without warranty of any kind, either express, implied, or statutory, including, but not limited to, the implied warranties of merchantability and fitness for a particular purpose. Should the mineral lease awarded by the Louisiana State Mineral Board be subsequently modified, cancelled or abrogated due to the existence of conflicting leases, operating agreements, private claims or other future obligations or conditions which may affect all or any portion of the leased Tract, it shall not relieve the Lessee of the obligation to

pay any bonus due thereon to the Louisiana State Mineral Board, not shall the Louisiana State Mineral Board be obligated to refund any consideration paid by the Lessor prior to such modification, cancellation, or abrogation, including, but not limited to, bonuses, rentals and royalties.

NOTE: The Department of Wildlife and Fisheries has designated certain areas in the coastal waters of the State of Louisiana as Oyster Seed Bed Areas. The exact location of those Seed Bed Areas must be obtained from the Department of Wildlife and Fisheries and any work done under a mineral lease from the State of Louisiana may necessarily be conducted in conformity with the rules and regulations promulgated by the said Department of Wildlife and Fisheries for Oyster Seed Bed Areas.

NOTE: It appears, according to our records, that a portion of this Tract is located within the restrictive safety fairway area as set out by the Corps of Engineers, U.S. Army and/or the restrictive anchorage area as set out by the U.S. Coast Guard.

NOTE: The State of Louisiana does hereby reserve, and this lease shall be subject to, the imprescriptible right of surface use in the nature of a servitude in favor of the Department of Natural Resources, including its Offices and Commissions, for the sole purpose of implementing, constructing, servicing and maintaining approved coastal zone management and/or restoration projects. Utilization of any and all rights derived under this lease by the mineral lessee, its agents, successors or assigns, shall not interfere with nor hinder the reasonable surface use by the Department of Natural Resources, its Offices or Commissions, as herein above reserved.

Applicant: Woodland Petroleum Corporation

Bidder	Cash Payment	Price / Acre	Rental	Oil	Gas	Other

BIK. 19

BIK. 20

BIK. 23

BIK. 24

TR 34815
1,992.29 ± ACS.
SEPT., 2002

SHIP SHOAL AREA
GULF OF MEXICO

P. O. B.
X=2,109,200.00
Y= 169,476.60

USA
LA

NAD 27
LAMBERT LA. SOUTH ZONE

Terrebonne Parish, Louisiana

2000' 0' 2000'

36

TRACT 34816 - Portion of Block 24, Ship Shoal Area, Terrebonne Parish, Louisiana

That portion of Block 24, Ship Shoal Area, Terrebonne Parish, Louisiana, belonging to the State of Louisiana and not presently under mineral lease on September 11, 2002, being more fully described as follows: Beginning at the Southeast corner of Block 24, Ship Shoal Area, having Coordinates of X = 2,124,800.00 and Y = 155,515.07; thence West 15,600.00 feet along the South line of said Block 24 to its Southwest corner having Coordinates of X = 2,109,200.00 and Y = 155,515.07; thence North 4,310.90 feet along the West line of said Block 24 to a point having Coordinates of X = 2,109,200.00 and Y = 159,825.97; thence Northeasterly on an arc having a radius of 18,240.60 feet and a center at X = 2,117,317 and Y = 143,491 to a point having Coordinates of X = 2,112,203 and Y = 161,000; thence Northeasterly on a straight line to a point having Coordinates of X = 2,112,518 and Y = 161,092; thence Northeasterly on an arc having a radius of 18,240.60 feet and a center at X = 2,117,632 and Y = 143,583 to a point having Coordinates of X = 2,119,073 and Y = 161,767; thence Northwesterly on an arc having a radius of 18,240.60 feet and a center at X = 2,131,078 and Y = 175,500 to a point having Coordinates of X = 2,118,282.67 and Y = 162,500.00; thence East 6,517.33 feet to a point on the East line of said Block 24 having Coordinates of X = 2,124,800.00 and Y = 162,500.00; thence South 6,984.93 feet along the East line of said Block 24 to the point of beginning, containing approximately **2,226.62 acres**, all as more particularly outlined on a plat on file in the Office of Mineral Resources, Department of Natural Resources, as provided by the applicant, **LESS AND EXCEPT** that portion thereof, if any, lying seaward of the line three nautical miles from the coast line of Louisiana, as said three mile line has been decreed by the Supreme Court of the United States, as determined by a Special Master appointed therein, in litigation styled **United States v. State of Louisiana et al No. 9 Original**, in 1975. All bearings, distances and coordinates are based on Louisiana Coordinate System of 1927, (North or South Zone).

NOTE: The above description of the Tract nominated for lease has been provided and corrected, where required, exclusively by the nomination party. Any mineral lease selected from this Tract and awarded by the Louisiana State Mineral Board shall be without warranty of any kind, either express, implied, or statutory, including, but not limited to, the implied warranties of merchantability and fitness for a particular purpose. Should the mineral lease awarded by the Louisiana State Mineral Board be subsequently modified, cancelled or abrogated due to the existence of conflicting leases, operating agreements, private claims or other future obligations or conditions which may affect all or any portion of the leased Tract, it shall not relieve the Lessee of the obligation to pay any bonus due thereon to the Louisiana State Mineral Board, nor shall the Louisiana State Mineral Board be obligated to refund any consideration paid by the Lessor prior to such modification, cancellation, or abrogation, including, but not limited to, bonuses, rentals and royalties.

NOTE: The Department of Wildlife and Fisheries has designated certain areas in the coastal waters of the State of Louisiana as Oyster Seed Bed Areas. The exact location of those Seed Bed Areas must be obtained from the Department of Wildlife and Fisheries and any work done under a mineral lease from the State of Louisiana may necessarily be conducted in conformity with the rules and regulations promulgated by the said Department of Wildlife and Fisheries for Oyster Seed Bed Areas.

NOTE: It appears, according to our records, that a portion of this Tract is located within the restrictive safety fairway area as set out by the Corps of Engineers, U.S. Army and/or the restrictive anchorage area as set out by the U.S. Coast Guard.

NOTE: The State of Louisiana does hereby reserve, and this lease shall be subject to, the imprescriptible right of surface use in the nature of a servitude in favor of the Department of Natural Resources, including its Offices and Commissions, for the sole purpose of implementing, constructing, servicing and maintaining approved coastal zone management and/or restoration projects. Utilization of any and all rights derived under this lease by the mineral lessee, its agents, successors or assigns, shall not interfere with nor hinder the reasonable surface use by the Department of Natural Resources, its Offices or Commissions, as herein above reserved.

Applicant: Woodland Petroleum Corporation

Bidder	Cash Payment	Price / Acre	Rental	Oil	Gas	Other

LA
USA

BIK. 24

BIK. 25

BIK. 23

TR 34816
2,226.62 ± ACS.
SEPT., 2002

SHIP SHOAL AREA
GULF OF MEXICO

P. O. B.
X=2,124,800.00
Y=155,515.07

NAD 27
LAMBERT LA. SOUTH ZONE

BIK. 39

39

Terrebonne Parish, Louisiana

2000' 0' 2000'

TRACT 34817 - Portion of Block 39, Ship Shoal Area, Terrebonne Parish, Louisiana

That portion of Block 39, Ship Shoal Area, Terrebonne Parish, Louisiana, belonging to the State of Louisiana and not presently under mineral lease on September 11, 2002, being more fully described as follows: Beginning at the Northeast corner of Block 39, Ship Shoal Area, having Coordinates of X = 2,124,800.00 and Y = 155,515.07; thence South 6,980.77 feet along the East line of said Block 39 to a point having Coordinates of X = 2,124,800.00 and Y = 148,534.30; thence West 15,600.00 feet to a point on the West line of said Block 39 having Coordinates of X = 2,109,200.00 and Y = 148,534.30; thence North 6,980.77 feet along the West line of said Block 39 to its Northwest corner having Coordinates of X = 2,109,200.00 and Y = 155,515.07; thence East 15,600.00 feet along the North line of said Block 39 to the point of beginning, containing approximately **2,500.00 acres**, all as more particularly outlined on a plat on file in the Office of Mineral Resources, Department of Natural Resources, as provided by the applicant. All bearings, distances and coordinates are based on Louisiana Coordinate System of 1927, (North or South Zone).

NOTE: The above description of the Tract nominated for lease has been provided and corrected, where required, exclusively by the nomination party. Any mineral lease selected from this Tract and awarded by the Louisiana State Mineral Board shall be without warranty of any kind, either express, implied, or statutory, including, but not limited to, the implied warranties of merchantability and fitness for a particular purpose. Should the mineral lease awarded by the Louisiana State Mineral Board be subsequently modified, cancelled or abrogated due to the existence of conflicting leases, operating agreements, private claims or other future obligations or conditions which may affect all or any portion of the leased Tract, it shall not relieve the Lessee of the obligation to pay any bonus due thereon to the Louisiana State Mineral Board, nor shall the Louisiana State Mineral Board be obligated to refund any consideration paid by the Lessor prior to such modification, cancellation, or abrogation, including, but not limited to, bonuses, rentals and royalties.

NOTE: The Department of Wildlife and Fisheries has designated certain areas in the coastal waters of the State of Louisiana as Oyster Seed Bed Areas. The exact location of those Seed Bed Areas must be obtained from the Department of Wildlife and Fisheries and any work done under a mineral lease from the State of Louisiana may necessarily be conducted in conformity with the rules and regulations promulgated by the said Department of Wildlife and Fisheries for Oyster Seed Bed Areas.

NOTE: It appears, according to our records, that a portion of this Tract is located within the restrictive safety fairway area as set out by the Corps of Engineers, U.S. Army and/or the restrictive anchorage area as set out by the U.S. Coast Guard.

NOTE: The State of Louisiana does hereby reserve, and this lease shall be subject to, the imprescriptible right of surface use in the nature of a

servitude in favor of the Department of Natural Resources, including its Offices and Commissions, for the sole purpose of implementing, constructing, servicing and maintaining approved coastal zone management and/or restoration projects. Utilization of any and all rights derived under this lease by the mineral lessee, its agents, successors or assigns, shall not interfere with nor hinder the reasonable surface use by the Department of Natural Resources, its Offices or Commissions, as herein above reserved.

Applicant: Woodland Petroleum Corporation

Bidder	Cash Payment	Price / Acre	Rental	Oil	Gas	Other

BIK. 24

BIK. 25

BIK. 38

TR 34817
2,500.00 ± ACS.
SEPT., 2002

SHIP SHOAL AREA
GULF OF MEXICO

BIK. 39

P.O.B.
X=2,124,800.00
Y= 155,515.07

NAD 83
LAMBERT LA. SOUTH ZONE

42

Terrebonne Parish, Louisiana



TRACT 34818 - Portion of Block 39, Ship Shoal Area, Terrebonne Parish, Louisiana

That portion of Block 39, Ship Shoal Area, Terrebonne Parish, Louisiana, belonging to the State of Louisiana and not presently under mineral lease on September 11, 2002, being more fully described as follows: Beginning at the Southeast corner of Block 39, Ship Shoal Area, having Coordinates of X = 2,124,800.00 and Y = 141,553.53; thence West 15,600.00 feet along the South line of said Block 39 to its Southwest corner having Coordinates of X = 2,109,200.00 and Y = 141,553.53; thence North 6,980.77 feet along the West line of said Block 39 to a point having Coordinates of X = 2,109,200.00 and Y = 148,534.30; thence East 15,600.00 feet to a point on the East line of said Block 39 having Coordinates of X = 2,124,800.00 and Y = 148,534.30; thence South 6,980.77 feet along the East line of said Block 39 to the point of beginning, **LESS AND EXCEPT**, if any, that portion of Isles Dernieres Barrier Islands Refuge that may lie within the above described tract, containing approximately **2,466 acres**, all as more particularly outlined on a plat on file in the Office of Mineral Resources, Department of Natural Resources, as provided by the applicant. All bearings, distances and coordinates are based on Louisiana Coordinate System of 1927, (North or South Zone).

NOTE: The above description of the Tract nominated for lease has been provided and corrected, where required, exclusively by the nomination party. Any mineral lease selected from this Tract and awarded by the Louisiana State Mineral Board shall be without warranty of any kind, either express, implied, or statutory, including, but not limited to, the implied warranties of merchantability and fitness for a particular purpose. Should the mineral lease awarded by the Louisiana State Mineral Board be subsequently modified, cancelled or abrogated due to the existence of conflicting leases, operating agreements, private claims or other future obligations or conditions which may affect all or any portion of the leased Tract, it shall not relieve the Lessee of the obligation to pay any bonus due thereon to the Louisiana State Mineral Board, not shall the Louisiana State Mineral Board be obligated to refund any consideration paid by the Lessor prior to such modification, cancellation, or abrogation, including, but not limited to, bonuses, rentals and royalties.

NOTE: The Department of Wildlife and Fisheries has designated certain areas in the coastal waters of the State of Louisiana as Oyster Seed Bed Areas. The exact location of those Seed Bed Areas must be obtained from the Department of Wildlife and Fisheries and any work done under a mineral lease from the State of Louisiana may necessarily be conducted in conformity with the rules and regulations promulgated by the said Department of Wildlife and Fisheries for Oyster Seed Bed Areas.

NOTE: It appears, according to our records, that a portion of this Tract is located within the restrictive safety fairway area as set out by the Corps of Engineers, U.S. Army and/or the restrictive anchorage area as set out by the U.S. Coast Guard.

NOTE: This Tract may be located within a Wildlife Management Area, Refuge, Game Preserve or other area under the management and jurisdiction of the Department of Wildlife and Fisheries. As such, any specific rules and regulations promulgated by said Department for the respective Wildlife Management Area, Refuges, Game Preserves or similar areas, as well as the following, may be, but are not necessarily, applicable to lease operations on this Tract:

1. No activities will be allowed without written authorization from the Louisiana Department of Wildlife and Fisheries.
2. Projects will be evaluated on a case by case basis. Modifications to projects may be required including, but not limited to, access routes, spoil placement, well sites, flow lines and other appurtenant structures.
3. Mitigation will be required to offset avoidable wetland impacts.
4. Removal of all structures, facilities, and equipment will be required within 120 days of abandonment unless otherwise agreed to be the Department of Wildlife and Fisheries.
5. Prior to submitting applications for wetland permits to Federal and State permitting agencies the lease holder shall coordinate project details with the Louisiana Department of Wildlife and Fisheries, Fur and Refuge Division. Contact person for the Department will be Mike Windham at (504) 568-5886.

NOTE: The State of Louisiana does hereby reserve, and this lease shall be subject to, the imprescriptible right of surface use in the nature of a servitude in favor of the Department of Natural Resources, including its Offices and Commissions, for the sole purpose of implementing, constructing, servicing and maintaining approved coastal zone management and/or restoration projects. Utilization of any and all rights derived under this lease by the mineral lessee, its agents, successors or assigns, shall not interfere with nor hinder the reasonable surface use by the Department of Natural Resources, its Offices or Commissions, as herein above reserved.

Applicant: Woodland Petroleum Corporation

Bidder	Cash Payment	Price / Acre	Rental	Oil	Gas	Other

BIK. 39

BIK. 38

BIK. 40

TR 34818
2,466 ± ACS.
SEPT., 2002

P. O. B.
X=2,124,800.00
Y= 141,553.53

BIK. 48

SHIP SHOAL AREA
GULF OF MEXICO

45

Terrebonne Parish, Louisiana

2000' 0' 2000'

NAD 27 LAMBERT LA. SOUTH ZONE

TRACT 34819 - Portion of Block 48, Ship Shoal Area, Terrebonne Parish, Louisiana

That portion of Block 48, Ship Shoal Area, Terrebonne Parish, Louisiana, belonging to the State of Louisiana and not presently under mineral lease on September 11, 2002, being more fully described as follows: Beginning at the Northwest corner of Block 48, Ship Shoal Area, having Coordinates of X = 2,109,200.00 and Y = 141,553.53; thence East 10,518.86 feet along the North line of said Block 48 to a point having Coordinates of X = 2,119,718.86 and Y = 141,553.53; thence Southeasterly on a straight line to a point having Coordinates of X = 2,122,523 and Y = 140,238; thence Southeasterly on a straight line to a point on the East line of said Block 48 having Coordinates of X = 2,124,800.00 and Y = 139,755.22; thence South 5,183.22 feet along the East line of said Block 48 to a point having Coordinates of X = 2,124,800.00 and Y = 134,572.00; thence West 15,600.00 feet to a point on the West line of said Block 48 having Coordinates of X = 2,109,200.00 and Y = 134,572.00; thence North 6,981.53 feet along the West line of said Block 48 to the point of beginning, containing approximately **2,376.54 acres**, all as more particularly outlined on a plat on file in the Office of Mineral Resources, Department of Natural Resources, as provided by the applicant. All bearings, distances and coordinates are based on Louisiana Coordinate System of 1927, (North or South Zone).

NOTE: The above description of the Tract nominated for lease has been provided and corrected, where required, exclusively by the nomination party. Any mineral lease selected from this Tract and awarded by the Louisiana State Mineral Board shall be without warranty of any kind, either express, implied, or statutory, including, but not limited to, the implied warranties of merchantability and fitness for a particular purpose. Should the mineral lease awarded by the Louisiana State Mineral Board be subsequently modified, cancelled or abrogated due to the existence of conflicting leases, operating agreements, private claims or other future obligations or conditions which may affect all or any portion of the leased Tract, it shall not relieve the Lessee of the obligation to pay any bonus due thereon to the Louisiana State Mineral Board, nor shall the Louisiana State Mineral Board be obligated to refund any consideration paid by the Lessor prior to such modification, cancellation, or abrogation, including, but not limited to, bonuses, rentals and royalties.

NOTE: The Department of Wildlife and Fisheries has designated certain areas in the coastal waters of the State of Louisiana as Oyster Seed Bed Areas. The exact location of those Seed Bed Areas must be obtained from the Department of Wildlife and Fisheries and any work done under a mineral lease from the State of Louisiana may necessarily be conducted in conformity with the rules and regulations promulgated by the said Department of Wildlife and Fisheries for Oyster Seed Bed Areas.

NOTE: It appears, according to our records, that a portion of this Tract is located within the restrictive safety fairway area as set out by the

Corps of Engineers, U.S. Army and/or the restrictive anchorage area as set out by the U.S. Coast Guard.

NOTE: The State of Louisiana does hereby reserve, and this lease shall be subject to, the imprescriptible right of surface use in the nature of a servitude in favor of the Department of Natural Resources, including its Offices and Commissions, for the sole purpose of implementing, constructing, servicing and maintaining approved coastal zone management and/or restoration projects. Utilization of any and all rights derived under this lease by the mineral lessee, its agents, successors or assigns, shall not interfere with nor hinder the reasonable surface use by the Department of Natural Resources, its Offices or Commissions, as herein above reserved.

Applicant: Woodland Petroleum Corporation

Bidder	Cash Payment	Price / Acre	Rental	Oil	Gas	Other

BIK. 38

BIK. 39

BIK. 40

BIK. 49

BIK. 47

P.O.B.
X=2,109,200.00
Y=141,553.53

TR 34819
2,376.54 ± ACS.
SEPT., 2002

SHIP SHOAL AREA
GULF OF MEXICO

BIK. 48

NAD 27
LAMBERT LA. SOUTH ZONE

Terrebonne Parish, Louisiana

2000' 0' 2000'

48

TRACT 34820 - Portion of Block 48, Ship Shoal Area, Terrebonne Parish, Louisiana

That portion of Block 48, Ship Shoal Area, Terrebonne Parish, Louisiana, belonging to the State of Louisiana and not presently under mineral lease on September 11, 2002, being more fully described as follows: Beginning at the Southwest corner of Block 48, Ship Shoal Area, having Coordinates of X = 2,109,200.00 and Y = 127,591.99; thence North 6,980.01 feet along the West line of said Block 48 to a point having Coordinates of X = 2,109,200.00 and Y = 134,572.00; thence East 15,600.00 feet to a point on the East line of said Block 48 having Coordinates of X = 2,124,800.00 and Y = 134,572.00; thence South 6,980.01 feet along the East line of said Block 48 to its Southeast corner having Coordinates of X = 2,124,800.00 and Y = 127,591.99; thence West 15,600.00 feet along the South line of said Block 48 to the point of beginning, containing approximately **2,499.73 acres**, all as more particularly outlined on a plat on file in the Office of Mineral Resources, Department of Natural Resources, as provided by the applicant. All bearings, distances and coordinates are based on Louisiana Coordinate System of 1927, (North or South Zone).

NOTE: The above description of the Tract nominated for lease has been provided and corrected, where required, exclusively by the nomination party. Any mineral lease selected from this Tract and awarded by the Louisiana State Mineral Board shall be without warranty of any kind, either express, implied, or statutory, including, but not limited to, the implied warranties of merchantability and fitness for a particular purpose. Should the mineral lease awarded by the Louisiana State Mineral Board be subsequently modified, cancelled or abrogated due to the existence of conflicting leases, operating agreements, private claims or other future obligations or conditions which may affect all or any portion of the leased Tract, it shall not relieve the Lessee of the obligation to pay any bonus due thereon to the Louisiana State Mineral Board, nor shall the Louisiana State Mineral Board be obligated to refund any consideration paid by the Lessor prior to such modification, cancellation, or abrogation, including, but not limited to, bonuses, rentals and royalties.

NOTE: The Department of Wildlife and Fisheries has designated certain areas in the coastal waters of the State of Louisiana as Oyster Seed Bed Areas. The exact location of those Seed Bed Areas must be obtained from the Department of Wildlife and Fisheries and any work done under a mineral lease from the State of Louisiana may necessarily be conducted in conformity with the rules and regulations promulgated by the said Department of Wildlife and Fisheries for Oyster Seed Bed Areas.

NOTE: It appears, according to our records, that a portion of this Tract is located within the restrictive safety fairway area as set out by the Corps of Engineers, U.S. Army and/or the restrictive anchorage area as set out by the U.S. Coast Guard.

NOTE: The State of Louisiana does hereby reserve, and this lease shall be subject to, the imprescriptible right of surface use in the nature of a

servitude in favor of the Department of Natural Resources, including its Offices and Commissions, for the sole purpose of implementing, constructing, servicing and maintaining approved coastal zone management and/or restoration projects. Utilization of any and all rights derived under this lease by the mineral lessee, its agents, successors or assigns, shall not interfere with nor hinder the reasonable surface use by the Department of Natural Resources, its Offices or Commissions, as herein above reserved.

Applicant: Woodland Petroleum Corporation

Bidder	Cash Payment	Price / Acre	Rental	Oil	Gas	Other

SHIP SHOAL AREA
BIK. 48 GULF OF MEXICO

TR 34820
2,499.73 ± ACS.
SEPT., 2002

BIK. 49

BIK. 47

P. O. B.
X=2,109,200.00
Y= 127,591.99

NAD 27
LAMBERT LA. SOUTH ZONE

BIK. 63

51

Terrebonne Parish, Louisiana

2000' 0' 2000'

TRACT 34821 - Portion of Block 45, Ship Shoal Area, Terrebonne Parish, Louisiana

That portion of Block 45, Ship Shoal Area, Terrebonne Parish, Louisiana, belonging to the State of Louisiana and not presently under mineral lease on September 11, 2002, being more fully described as follows: Beginning at the Northeast corner of State Lease No. 17187, said corner also being the Easternmost Southeast corner of State Lease No. 16557, having Coordinates of X = 2,169,490.00 and Y = 131,907.76; thence North 2,665.00 feet along the East boundary of said State Lease No. 16557 to its Northeast corner having Coordinates of X = 2,169,490.00 and Y = 134,572.76; thence North 701.75 feet to a point on the coastline as established by the 1975 Court Decree having Coordinates of X = 2,169,490 and Y = 135,275; thence Northeasterly in a straight line along said coastline to a point having Coordinates of X = 2,169,680 and Y = 135,315; thence Northeasterly in a straight line along said coastline to a point having Coordinates of X = 2,170,035 and Y = 135,500; thence Easterly in a straight line along said coastline to a point of intersection with the East line of said Block 45 having Coordinates of X = 2,171,600.00 and Y = 135,530.82; thence South 5,333.38 feet along the East line of said Block 45 to a point having Coordinates of X = 2,171,600.00 and Y = 130,197.44; thence West 2,110.00 feet to a point on the East line of said State Lease No. 17187 having Coordinates of X = 2,169,490.00 and Y = 130,197.44; thence North 1,710.32 feet along the East line of said State Lease No. 17187 to the point of beginning, containing approximately **255.755 acres**, all as more particularly outlined on a plat on file in the Office of Mineral Resources, Department of Natural Resources, as provided by the applicant. All bearings, distances and coordinates are based on Louisiana Coordinate System of 1927, (North or South Zone).

NOTE: The above description of the Tract nominated for lease has been provided and corrected, where required, exclusively by the nomination party. Any mineral lease selected from this Tract and awarded by the Louisiana State Mineral Board shall be without warranty of any kind, either express, implied, or statutory, including, but not limited to, the implied warranties of merchantability and fitness for a particular purpose. Should the mineral lease awarded by the Louisiana State Mineral Board be subsequently modified, cancelled or abrogated due to the existence of conflicting leases, operating agreements, private claims or other future obligations or conditions which may affect all or any portion of the leased Tract, it shall not relieve the Lessee of the obligation to pay any bonus due thereon to the Louisiana State Mineral Board, nor shall the Louisiana State Mineral Board be obligated to refund any consideration paid by the Lessor prior to such modification, cancellation, or abrogation, including, but not limited to, bonuses, rentals and royalties.

NOTE: The Department of Wildlife and Fisheries has designated certain areas in the coastal waters of the State of Louisiana as Oyster Seed Bed Areas. The exact location of those Seed Bed Areas must be obtained from the Department of Wildlife and Fisheries and any work done under a mineral lease from the State of Louisiana may necessarily be conducted in

conformity with the rules and regulations promulgated by the said Department of Wildlife and Fisheries for Oyster Seed Bed Areas.

NOTE: The State of Louisiana does hereby reserve, and this lease shall be subject to, the imprescriptible right of surface use in the nature of a servitude in favor of the Department of Natural Resources, including its Offices and Commissions, for the sole purpose of implementing, constructing, servicing and maintaining approved coastal zone management and/or restoration projects. Utilization of any and all rights derived under this lease by the mineral lessee, its agents, successors or assigns, shall not interfere with nor hinder the reasonable surface use by the Department of Natural Resources, its Offices or Commissions, as herein above reserved.

Applicant: Cypress Energy Corporation

Bidder	Cash Payment	Price / Acre	Rental	Oil	Gas	Other

SHIP SHOAL AREA

T24S-R17E
T24S-R16E

Δ Whiskey

Block 43

D E R N I E

Scamp Δ

E

E

N

+

E

D

C

O

U

P

S

L

I

S

E

Whiskey Island

Sand

COUPE

NOUVELLE

A Gap

(SHORELINE FROM THE 1975 DECREE)

S.L. 17190

Block 45

P.O.R
X = 2,169,490.00
Y = 131,907.76

S.L. 16557

S.L. 17188

S.L. 17187

TR 34821
255.755 ± ACS.
SEPT., 2002

S.L. 16558

S.L. 17189

Block 67

54

Block 66

TERREBONNE PARISH

2000' 0' 2000'

M E X I C O

TRACT 34822 - PORTION OF BLOCK 66, SHIP SHOAL AREA, Terrebonne Parish, Louisiana

That portion of Block 66, Ship Shoal Area, Terrebonne Parish, Louisiana, belonging to the State of Louisiana and not presently under mineral lease on September 11, 2002, being more fully described as follows: Beginning at the Northeast corner of Block 66, Ship Shoal Area, having Coordinates of X = 2,171,600.00 and Y = 127,591.99; thence South a distance of 318.66 feet to a point on the East line of said Block 66 having Coordinates of X = 2,171,600.00 and Y = 127,273.33; thence West a distance of 15,600.00 feet to a point on the West line of said Block 66 having Coordinates of X = 2,156,000.00 and Y = 127,273.33; thence North a distance of 318.66 feet to a point at the Northwest corner of said Block 66 having Coordinates of X = 2,156,000.00 and Y = 127,591.99; thence East a distance of 15,600.00 feet to the point of beginning, containing approximately **114.12 acres**, all as more particularly outlined on a plat on file in the Office of Mineral Resources, Department of Natural Resources, as provided by the applicant. All bearings, distances and coordinates are based on Louisiana Coordinate System of 1927, (North or South Zone).

NOTE: The above description of the Tract nominated for lease has been provided and corrected, where required, exclusively by the nomination party. Any mineral lease selected from this Tract and awarded by the Louisiana State Mineral Board shall be without warranty of any kind, either express, implied, or statutory, including, but not limited to, the implied warranties of merchantability and fitness for a particular purpose. Should the mineral lease awarded by the Louisiana State Mineral Board be subsequently modified, cancelled or abrogated due to the existence of conflicting leases, operating agreements, private claims or other future obligations or conditions which may affect all or any portion of the leased Tract, it shall not relieve the Lessee of the obligation to pay any bonus due thereon to the Louisiana State Mineral Board, nor shall the Louisiana State Mineral Board be obligated to refund any consideration paid by the Lessor prior to such modification, cancellation, or abrogation, including, but not limited to, bonuses, rentals and royalties.

NOTE: The State of Louisiana does hereby reserve, and this lease shall be subject to, the imprescriptible right of surface use in the nature of a servitude in favor of the Department of Natural Resources, including its Offices and Commissions, for the sole purpose of implementing, constructing, servicing and maintaining approved coastal zone management and/or restoration projects. Utilization of any and all rights derived under this lease by the mineral lessee, its agents, successors or assigns, shall not interfere with nor hinder the reasonable surface use by the Department of Natural Resources, its Offices or Commissions, as herein above reserved.

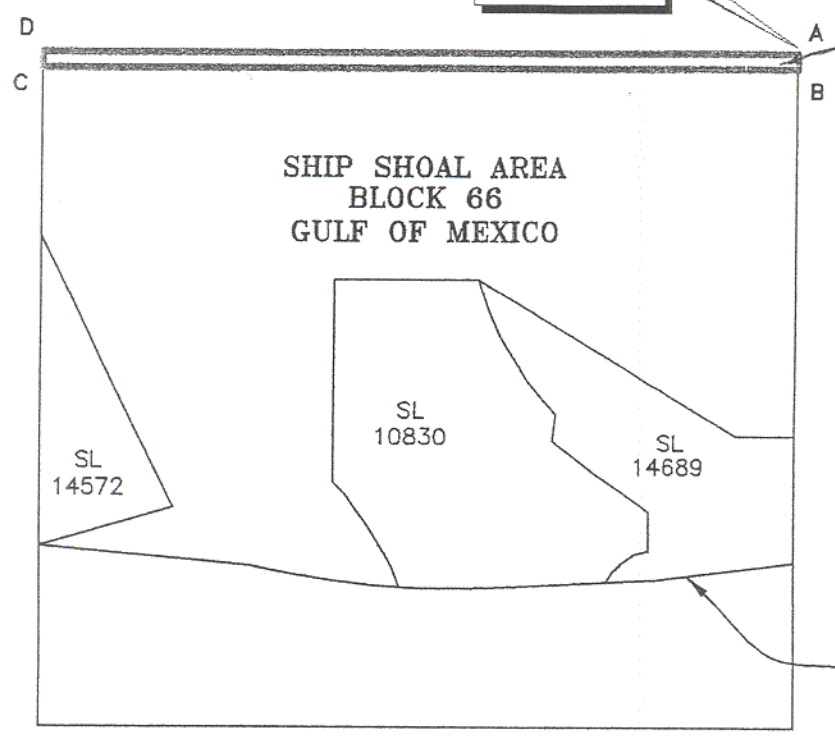
Applicant: G.K. Grady

Bidder	Cash Payment	Price / Acre	Rental	Oil	Gas	Other

LOUISIANA COORDINATE SYSTEM
(1927 SOUTH ZONE)

P.O.B
X= 2,171,600.00
Y= 127,591.99

TR 34822
114.12 ± ACS.
SEPT., 2002



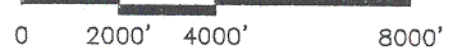
NAD 27
A- X=2171600.00
Y= 127591.99
B- X=2171600.00
Y= 127273.33
C- X=2156000.00
Y= 127273.33
D- X=2156000.00
Y= 127591.99

3 MILE LINE
AS SET
OUT IN THE
JUNE, 1975,
DECREE OF
THE SUPREME
COURT

COURSES

A-B: SOUTH 318.66'
B-C: WEST 15600.00'
C-D: NORTH 318.66'
D-A: EAST 15600.00'

GRAPHIC SCALE



NOTE: UNLESS OTHERWISE NOTED
COORDINATES ARE BASED ON NAD27.

NOTE:
NAD83 COORDINATES WERE CONVERTED
TO/FROM NAD27 COORDINATES USING THE
CORPSCON SOFTWARE FROM THE U.S.
ARMY TOPOGRAPHIC ENGINEERING CENTER.

NO.	DATE	REVISION
BLOCK 66, SHIP SHOAL AREA GULF OF MEXICO TERREBONNE PARISH, LOUISIANA		

TRACT 34823 - Portion of Block 66, Ship Shoal Area, Terrebonne Parish, Louisiana

That portion of Block 66, Ship Shoal Area, Terrebonne Parish, Louisiana, belonging to the State of Louisiana and not presently under mineral lease on September 11, 2002, being more fully described as follows: Beginning at the Northeast corner of Block 66, Ship Shoal Area, having Coordinates of X = 2,171,600.00 and Y = 127,273.33; thence South along the East line of said Block 66 a distance of 7,575.89 feet to a point at the Northeast corner of State Lease No. 14689 having Coordinates of X = 2,171,600.00 and Y = 119,697.44; thence West along the North line of said State Lease No. 14689 a distance of 1,200.00 feet to a point having Coordinates of X = 2,170,400.00 and Y = 119,697.44; thence North 59 degrees 15 minutes 07 seconds West a distance of 6,248.36 feet to a point at the Northeast corner of said State Lease No. 14689, also being the Northeast corner of said State Lease No. 10830 having Coordinates of X = 2,165,030.00 and Y = 122,891.99; thence around State Lease No. 10830 the following courses: West a distance of 2,948.75 feet to a point having Coordinates of X = 2,162,081.25 and Y = 118,699.67; thence South 46 degrees 09 minutes 36 seconds East a distance of 317.15 feet to a point having Coordinates of X = 2,162,310.00 and Y = 118,480.00; thence South 35 degrees 05 minutes 02 seconds East a distance of 904.70 feet to a point having Coordinates of X = 2,162,830.00 and Y = 117,739.68; thence South 30 degrees 57 minutes 50 seconds East a distance of 583.10 feet to a point having Coordinates of X = 2,163,130.00 and Y = 117,239.67; thence South 27 degrees 53 minutes 50 seconds East a distance of 384.71 feet to a point having Coordinates of X = 2,163,310.00 and Y = 116,899.67; thence South 21 degrees 20 minutes 22 seconds East a distance of 385.10 feet to a point on the 3 Mile Line as set out in the June, 1975, Supreme Court decree having Coordinates of X = 2,163,450.10 and Y = 116,541.06; thence along said 3 Mile Line along a curve to the right having a radius of 18,240.60 feet and a radius point Coordinate of X = 2,164,478.86 and Y = 134,752.63 to a point having Coordinates of X = 2,160,352.00 and Y = 116,985.00; thence North 84 degrees 49 minutes 01 seconds West along said 3 Mile Line a distance of 4,095.75 feet to a point having Coordinates of X = 2,156,273.00 and Y = 117,355.00; thence along said 3 Mile Line along a curve to the right having a radius of 18,240.60 feet and a radius point Coordinate of X = 2,157,913.93 and Y = 135,521.64 to a point having Coordinates of X = 2,156,000.00 and Y = 117,381.73; thence North 73 degrees 41 minutes 54 seconds East along the Southeast line of said State Lease No. 14572 a distance of 2,871.03 feet to a point at the Southeast corner of said State Lease No. 14572 having Coordinates of X = 2,158,755.60 and Y = 118,187.61; thence North 26 degrees 10 minutes 58 seconds West along the Northeast line a distance of 6,245.19 feet to a point at the Northerly corner of said State Lease No. 14572, also being on the East line of said Block 66, having Coordinates of X = 2,156,000.00 and Y = 123,791.99; thence North along the East line of said Block 66 a distance of 3,481.34 feet to a point having Coordinates of X = 2,156,000.00 and Y = 127,273.33; thence East along the North line of said Block 66 a distance of 15,600.00 feet to the point of beginning, containing approximately **2,500.00 acres**, all as more particularly outlined on a plat on file in the Office of Mineral

Resources, Department of Natural Resources, as provided by the applicant, **LESS AND EXCEPT** that portion thereof, if any, lying seaward of the line three nautical miles from the coast line of Louisiana, as said three mile line has been decreed by the Supreme Court of the United States, as determined by a Special Master appointed therein, in litigation styled **United States v. State of Louisiana et al No. 9 Original**, in 1975. All bearings, distances and coordinates are based on Louisiana Coordinate System of 1927, (North or South Zone).

NOTE: The above description of the Tract nominated for lease has been provided and corrected, where required, exclusively by the nomination party. Any mineral lease selected from this Tract and awarded by the Louisiana State Mineral Board shall be without warranty of any kind, either express, implied, or statutory, including, but not limited to, the implied warranties of merchantability and fitness for a particular purpose. Should the mineral lease awarded by the Louisiana State Mineral Board be subsequently modified, cancelled or abrogated due to the existence of conflicting leases, operating agreements, private claims or other future obligations or conditions which may affect all or any portion of the leased Tract, it shall not relieve the Lessee of the obligation to pay any bonus due thereon to the Louisiana State Mineral Board, not shall the Louisiana State Mineral Board be obligated to refund any consideration paid by the Lessor prior to such modification, cancellation, or abrogation, including, but not limited to, bonuses, rentals and royalties.

NOTE: The State of Louisiana does hereby reserve, and this lease shall be subject to, the imprescriptible right of surface use in the nature of a servitude in favor of the Department of Natural Resources, including its Offices and Commissions, for the sole purpose of implementing, constructing, servicing and maintaining approved coastal zone management and/or restoration projects. Utilization of any and all rights derived under this lease by the mineral lessee, its agents, successors or assigns, shall not interfere with nor hinder the reasonable surface use by the Department of Natural Resources, its Offices or Commissions, as herein above reserved.

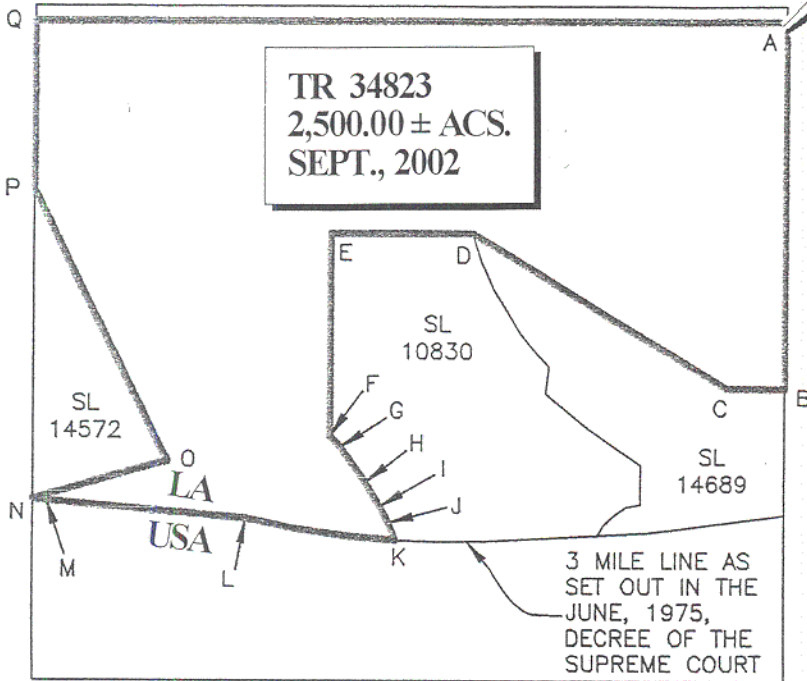
Applicant: G.K. Grady

Bidder	Cash Payment	Price / Acre	Rental	Oil	Gas	Other

P.O.B
X= 2,171,600.00
Y= 127,273.33

60

LOUISIANA COORDINATE SYSTEM
(1927 SOUTH ZONE)



A	X=2171600.00	Y=127273.33
B	X=2171600.00	Y=119697.44
C	X=2170400.00	Y=119697.44
D	X=2165030.00	Y=122891.99
E	X=2162081.25	Y=122891.99
F	X=2162081.25	Y=118699.67
G	X=2162310.00	Y=118480.00
H	X=2162830.00	Y=117739.68
I	X=2163130.00	Y=117239.67
J	X=2163310.00	Y=116899.67
K	X=2163450.10	Y=116541.06
L	X=2160352.00	Y=116985.00
M	X=2156273.00	Y=117355.00
N	X=2156000.00	Y=117381.73
O	X=2158755.60	Y=118187.61
P	X=2156000.00	Y=123791.99
Q	X=2156000.00	Y=127273.33

COURSES

A-B:	SOUTH 7575.89'	L-M:	N84°49'01"W 4095.75'
B-C:	WEST 1200.00'	M-N:	RADIUS: 18240.60'
C-D:	N59°15'07"W 6248.36'		RADIUS POINT:
D-E:	WEST 2948.75'		X=2157913.93
E-F:	SOUTH 4192.32'		Y= 135521.64
F-G:	S46°09'36"E 317.15'	N-O:	N73D41'54"E 2871.03'
G-H:	S35°05'02"E 904.70'	O-P:	N26D10'58"W 6245.19'
H-I:	S30°57'50"E 583.10'	P-Q:	NORTH 3481.34'
I-J:	S27°53'50"E 384.71'	Q-A:	EAST 15600.00'
J-K:	S21°20'22"E 385.01'		
K-L:	RADIUS: 18240.60'		
	RADIUS POINT:		
	X=2164478.86		
	Y= 134752.63		

GRAPHIC SCALE

0 2000' 4000' 8000'

NOTE: UNLESS OTHERWISE NOTED
COORDINATES ARE BASED ON NAD27.

NOTE:
NAD83 COORDINATES WERE CONVERTED
TO/FROM NAD27 COORDINATES USING THE
CORPSCON SOFTWARE FROM THE U.S.
ARMY TOPOGRAPHIC ENGINEERING CENTER.

NO.	DATE	REVISION

BLOCK 66, SHIP SHOAL AREA
GULF OF MEXICO
TERREBONNE PARISH, LOUISIANA

TRACT 34824 - Portion of Block 43, Ship Shoal Area, Terrebonne Parish, Louisiana

That portion of Block 43, Ship Shoal Area, Terrebonne Parish, Louisiana, belonging to the State of Louisiana and not presently under mineral lease on September 11, 2002, being more fully described as follows: Beginning at the Southwest corner of said Block 43, Ship Shoal Area having Coordinates of X = 2,171,600.00 and Y = 130,197.44; thence North 2,367.56 feet along the West boundary said Block 43 to the Southwest corner of State Lease No. 17190 having Coordinates of X = 2,171,600.00 and Y = 132,565.00; thence South 88 degrees 14 minutes 38 seconds East 1,272.60 feet along the South boundary of said State Lease No. 17190 to its Southeast corner having Coordinates of X = 2,172,872.00 and Y = 132,526.00; thence North 3,029.87 feet along the East boundary of said State Lease No. 17190 to a point on the coastline as established by the 1975 Court Decree having Coordinates of X = 2,172,872 and Y = 135,556; thence Easterly in a straight line along said coastline to a point having Coordinates of X = 2,175,894 and Y = 135,615; thence South 5,417.94 feet to a point on the South boundary of said Block 43, having Coordinates of X = 2,175,893.98 and Y = 130,197.44; thence West 4,293.98 feet to the point of beginning, containing approximately **442.37 acres**, all as more particularly outlined on a plat on file in the Office of Mineral Resources, Department of Natural Resources, as provided by the applicant. All bearings, distances and coordinates are based on Louisiana Coordinate System of 1927, (North or South Zone).

NOTE: The above description of the Tract nominated for lease has been provided and corrected, where required, exclusively by the nomination party. Any mineral lease selected from this Tract and awarded by the Louisiana State Mineral Board shall be without warranty of any kind, either express, implied, or statutory, including, but not limited to, the implied warranties of merchantability and fitness for a particular purpose. Should the mineral lease awarded by the Louisiana State Mineral Board be subsequently modified, cancelled or abrogated due to the existence of conflicting leases, operating agreements, private claims or other future obligations or conditions which may affect all or any portion of the leased Tract, it shall not relieve the Lessee of the obligation to pay any bonus due thereon to the Louisiana State Mineral Board, nor shall the Louisiana State Mineral Board be obligated to refund any consideration paid by the Lessor prior to such modification, cancellation, or abrogation, including, but not limited to, bonuses, rentals and royalties.

NOTE: The Department of Wildlife and Fisheries has designated certain areas in the coastal waters of the State of Louisiana as Oyster Seed Bed Areas. The exact location of those Seed Bed Areas must be obtained from the Department of Wildlife and Fisheries and any work done under a mineral lease from the State of Louisiana may necessarily be conducted in conformity with the rules and regulations promulgated by the said Department of Wildlife and Fisheries for Oyster Seed Bed Areas.

NOTE: The State of Louisiana does hereby reserve, and this lease shall be subject to, the imprescriptible right of surface use in the nature of a

servitude in favor of the Department of Natural Resources, including its Offices and Commissions, for the sole purpose of implementing, constructing, servicing and maintaining approved coastal zone management and/or restoration projects. Utilization of any and all rights derived under this lease by the mineral lessee, its agents, successors or assigns, shall not interfere with nor hinder the reasonable surface use by the Department of Natural Resources, its Offices or Commissions, as herein above reserved.

Applicant: Cypress Energy Corporation

Bidder	Cash Payment	Price / Acre	Rental	Oil	Gas	Other

SHIP SHOAL AREA

T24S-R17E
T24S-R16E

Whiskey

Block 43

D E R N I E

Scamp

Trinity

(SHORELINE FROM THE 1975 DECREE)

S.L. 17189

S.L. 16558

TR 34824
442.37 ± ACS.
SEPT., 2002

S.L. 17190

Block 67

63



M E X I C O

TÈRREBONNE PARISH

Block 66

P.O.B.

X= 2,171,600.00'
Y= 130,197.44'

Block 45

S.L. 16557

S.L. 17187

TRACT 34825 - Portion of Block 43, Ship Shoal Area, Terrebonne Parish, Louisiana

That portion of Block 43, Ship Shoal Area, Terrebonne Parish, Louisiana, belonging to the State of Louisiana and not presently under mineral lease on September 11, 2002, being more fully described as follows: Beginning at the Northwest corner of State Lease No. 16558, said corner also being the Westernmost Northwest corner of State Lease 17189 having Coordinates of X = 2,180,150.00 and Y = 134,900.00; thence South 4,702.56 feet along the said West boundary of State Lease No. 17189 to its Southwest corner, said corner also being a point on the Southern boundary of said Block 43, Ship Shoal Area, having Coordinates of X = 2,180,150.00 and Y = 130,197.44; thence West 4,256.02 feet along the South boundary of said Block 43 to a point having Coordinates of X = 2,175,893.98 and Y = 130,197.44; thence North 5,417.94 feet to a point being on the coastline as established by the 1975 Court Decree having Coordinates of X = 2,175,894 and Y = 135,615; thence Easterly 4,043.80 feet in a straight line along said coastline to a point having Coordinates of X = 2,179,937 and Y = 135,695; thence Southeasterly 224.71 feet in a straight line along said coastline to a point having Coordinates of X = 2,180,150 and Y = 135,623; thence South 723.40 feet to the point of beginning, containing approximately **533.27 acres**, all as more particularly outlined on a plat on file in the Office of Mineral Resources, Department of Natural Resources, as provided by the applicant. All bearings, distances and coordinates are based on Louisiana Coordinate System of 1927, (North or South Zone).

NOTE: The above description of the Tract nominated for lease has been provided and corrected, where required, exclusively by the nomination party. Any mineral lease selected from this Tract and awarded by the Louisiana State Mineral Board shall be without warranty of any kind, either express, implied, or statutory, including, but not limited to, the implied warranties of merchantability and fitness for a particular purpose. Should the mineral lease awarded by the Louisiana State Mineral Board be subsequently modified, cancelled or abrogated due to the existence of conflicting leases, operating agreements, private claims or other future obligations or conditions which may affect all or any portion of the leased Tract, it shall not relieve the Lessee of the obligation to pay any bonus due thereon to the Louisiana State Mineral Board, nor shall the Louisiana State Mineral Board be obligated to refund any consideration paid by the Lessor prior to such modification, cancellation, or abrogation, including, but not limited to, bonuses, rentals and royalties.

NOTE: The Department of Wildlife and Fisheries has designated certain areas in the coastal waters of the State of Louisiana as Oyster Seed Bed Areas. The exact location of those Seed Bed Areas must be obtained from the Department of Wildlife and Fisheries and any work done under a mineral lease from the State of Louisiana may necessarily be conducted in conformity with the rules and regulations promulgated by the said Department of Wildlife and Fisheries for Oyster Seed Bed Areas.

NOTE: The State of Louisiana does hereby reserve, and this lease shall be subject to, the imprescriptible right of surface use in the nature of a servitude in favor of the Department of Natural Resources, including its Offices and Commissions, for the sole purpose of implementing, constructing, servicing and maintaining approved coastal zone management and/or restoration projects. Utilization of any and all rights derived under this lease by the mineral lessee, its agents, successors or assigns, shall not interfere with nor hinder the reasonable surface use by the Department of Natural Resources, its Offices or Commissions, as herein above reserved.

Applicant: Cypress Energy Corporation

Bidder	Cash Payment	Price / Acre	Rental	Oil	Gas	Other

SHIP SHOAL AREA

T24S-R17E
T24S-R18E

Δ Whiskey

Block 43

D E R N I E S

Scamp Δ



(SHORELINE FROM THE 1975 DECREE)

S.L. 17190

S.L. 17189

TR 34825
533.27 ± ACS.
SEPT., 2002

P.O.B.

X= 2,180,150.00'
Y= 7134,900.00'

S.L. 16558

S.L. 17187

Block 45

S.L. 16557

Block 67

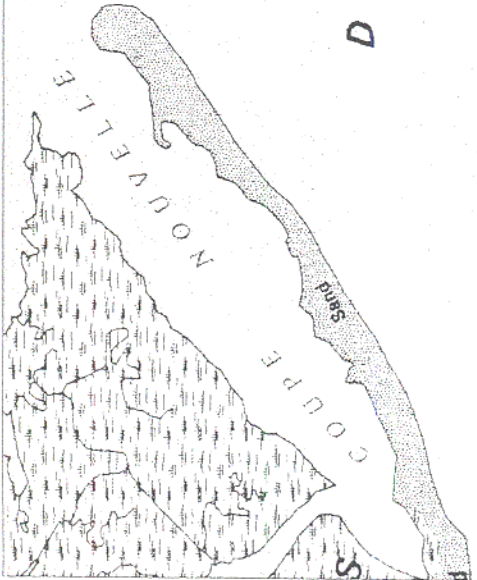
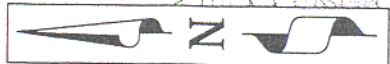
Block 66

TERREBONNE PARISH

2000' 0' 2000'

M F X I C O

F



WHISKEY

66

TRACT 34826 - PORTION OF BLOCK 67, SHIP SHOAL AREA, Terrebonne Parish, Louisiana

That portion of Block 67, Ship Shoal Area, Terrebonne Parish, Louisiana, belonging to the State of Louisiana and not presently under mineral lease on September 11, 2002, being more fully described as follows: Beginning at the Northwest corner of Block 67, Ship Shoal Area, said point having Coordinates of X = 2,171,600.00 and Y = 130,197.44; thence East a distance of 14,854.40 feet to the Northeast corner of said Block 67 having Coordinates of X = 2,186,454.40 and Y = 130,197.44; thence South 00 degrees 17 minutes 30 seconds East a distance of 3,440.47 feet to a point on the East line of said Block 67 having Coordinates of X = 2,186,471.91 and Y = 126,757.01; thence West a distance of 6,321.91 feet to a point having Coordinates of X = 2,180,150.00 and Y = 126,757.01; thence around State Lease No. 17308 the following courses: North a distance of 514.76 feet to a point having Coordinates of X = 2,180,150.00 and Y = 127,271.77; thence West a distance of 3,550.00 feet to a point having Coordinates of X = 2,176,600.00 and Y = 127,271.77; thence South a distance of 514.86 feet to a point having Coordinates of X = 2,176,600.00 and Y = 126,756.92; thence West a distance of 5,000.00 feet to a point on the West line of said Block 67 having Coordinates of X = 2,171,600.00 and Y = 126,756.92; thence North a distance of 3,440.53 feet to the point of beginning, containing approximately **1,131.97 acres**, all as more particularly outlined on a plat on file in the Office of Mineral Resources, Department of Natural Resources, as provided by the applicant. All bearings, distances and coordinates are based on Louisiana Coordinate System of 1927, (North or South Zone).

NOTE: The above description of the Tract nominated for lease has been provided and corrected, where required, exclusively by the nomination party. Any mineral lease selected from this Tract and awarded by the Louisiana State Mineral Board shall be without warranty of any kind, either express, implied, or statutory, including, but not limited to, the implied warranties of merchantability and fitness for a particular purpose. Should the mineral lease awarded by the Louisiana State Mineral Board be subsequently modified, cancelled or abrogated due to the existence of conflicting leases, operating agreements, private claims or other future obligations or conditions which may affect all or any portion of the leased Tract, it shall not relieve the Lessee of the obligation to pay any bonus due thereon to the Louisiana State Mineral Board, nor shall the Louisiana State Mineral Board be obligated to refund any consideration paid by the Lessor prior to such modification, cancellation, or abrogation, including, but not limited to, bonuses, rentals and royalties.

NOTE: The Department of Wildlife and Fisheries has designated certain areas in the coastal waters of the State of Louisiana as Oyster Seed Bed Areas. The exact location of those Seed Bed Areas must be obtained from the Department of Wildlife and Fisheries and any work done under a mineral lease from the State of Louisiana may necessarily be conducted in conformity with the rules and regulations promulgated by the said Department of Wildlife and Fisheries for Oyster Seed Bed Areas.

NOTE: The State of Louisiana does hereby reserve, and this lease shall be subject to, the imprescriptible right of surface use in the nature of a servitude in favor of the Department of Natural Resources, including its Offices and Commissions, for the sole purpose of implementing, constructing, servicing and maintaining approved coastal zone management and/or restoration projects. Utilization of any and all rights derived under this lease by the mineral lessee, its agents, successors or assigns, shall not interfere with nor hinder the reasonable surface use by the Department of Natural Resources, its Offices or Commissions, as herein above reserved.

Applicant: G.K. Grady

Bidder	Cash Payment	Price / Acre	Rental	Oil	Gas	Other

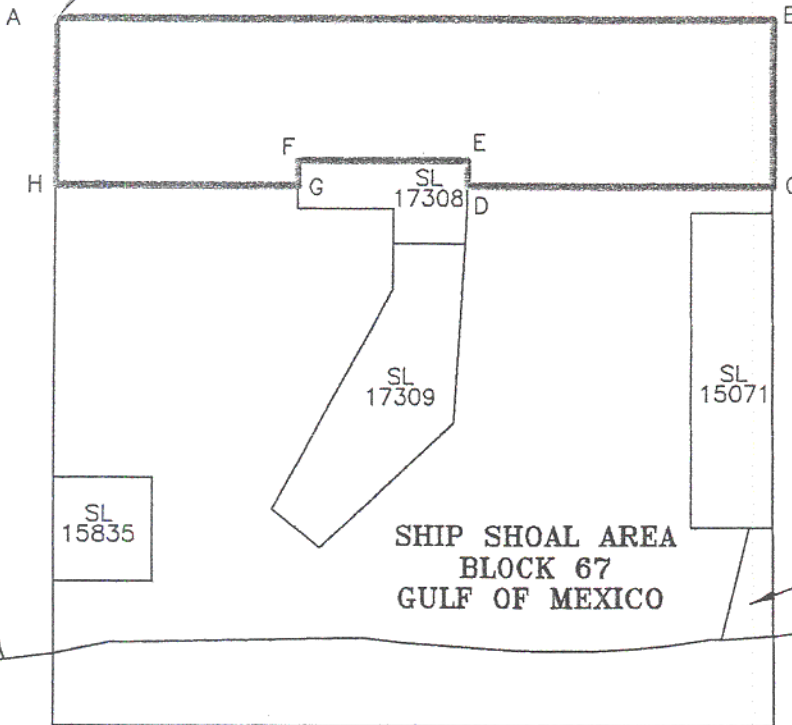
P.O.B.
X= 2,171,600.00
Y= 130,197.44

69

LOUISIANA COORDINATE SYSTEM
(1927 SOUTH ZONE)



3 MILE LINE AS
SET OUT IN THE
JUNE, 1975,
DECREE OF THE
SUPREME COURT



COURSES:

A-B	EAST	14854.40'
B-C	S00°17'30"E	3440.47'
C-D	WEST	6321.91'
D-E	NORTH	514.76'
E-F	WEST	3550.00'
F-G	SOUTH	514.86'
G-H	WEST	5000.00'
H-A	NORTH	3440.53'

A	X=2171600.00	Y=130197.44
B	X=2186454.40	Y=130197.44
C	X=2186471.91	Y=126757.01
D	X=2180150.00	Y=126757.01
E	X=2180150.00	Y=127271.77
F	X=2176600.00	Y=127271.77
G	X=2176600.00	Y=126756.92
H	X=2171600.00	Y=126756.92

TR 34826
1,131.97± ACS.
SEPT., 2002

GRAPHIC SCALE

0 2000' 4000' 8000'

NOTE: UNLESS OTHERWISE NOTED
COORDINATES ARE BASED ON NAD27.

NOTE:
NAD83 COORDINATES WERE CONVERTED
TO/FROM NAD27 COORDINATES USING THE
CORPSCON SOFTWARE FROM THE U.S.
ARMY TOPOGRAPHIC ENGINEERING CENTER.

NO.	DATE	REVISION
BLOCK 67, SHIP SHOAL AREA GULF OF MEXICO TERREBONNE PARISH, LOUISIANA		

TRACT 34827 - Portion of Block 67, Ship Shoal Area, Terrebonne Parish, Louisiana

That portion of Block 67, Ship Shoal Area, Terrebonne Parish, Louisiana, belonging to the State of Louisiana and not presently under mineral lease on September 11, 2002, being more fully described as follows: Beginning at the Northwest corner of Block 67, Ship Shoal Area, having Coordinates of X = 2,171,600.00 and Y = 126,756.92; thence East a distance of 5,000.00 feet to a point on the East line of State Lease No. 17308 having Coordinates of X = 2,176,600.00 and Y = 126,756.92; thence around said State Lease No. 17308 the following courses: South a distance of 485.15 feet to a point having Coordinates of X = 2,176,600.00 and Y = 126,271.77; thence East a distance of 2,000.00 feet to a point having Coordinates of X = 2,178,600.00 and Y = 126,271.77; thence South a distance of 720.60 feet to the Southwest corner of said State Lease No. 17308 having Coordinates of X = 2,178,600.00 and Y = 125,551.18; thence South a distance of 929.41 feet to a point having Coordinates of X = 2,178,600.00 and Y = 124,621.77; thence South 28 degrees 47 minutes 12 seconds West a distance of 5,191.58 feet to a point having Coordinates of X = 2,176,100.00 and Y = 120,071.77; thence South 51 degrees 20 minutes 25 seconds East a distance of 1,280.63 feet to a point having Coordinates of X = 2,177,100.00 and Y = 119,271.77; thence North 47 degrees 07 minutes 16 seconds East a distance of 3,821.00 feet to a point having Coordinates of X = 2,179,900.00 and Y = 121,871.77; thence North 03 degrees 15 minutes 07 seconds East a distance of 3,685.34 feet to the South East corner of said State Lease No. 17308 having Coordinates of X = 2,180,109.06 and Y = 125,551.18; thence North 03 degrees 15 minutes 07 seconds East a distance of 721.76 feet to a point having Coordinates 2,180,150.00 and Y = 126,271.77; thence North a distance of 485.24 feet to a point having Coordinates of X = 2,180,150.00 and Y = 126,757.01; thence East a distance of 6,321.91 feet to a point having Coordinates of X = 2,186,471.91 and Y = 126,757.01; thence South 00 degrees 17 minutes 30 seconds East a distance of 559.52 feet to a point having Coordinates of X = 2,186,474.76 and Y = 126,197.50; thence West a distance of 1,700.03 feet to a point having Coordinates of X = 2,184,774.73 and Y = 126,197.50; thence South 00 degrees 17 minutes 30 seconds East a distance of 6,500.14 feet to a point having Coordinates of X = 2,184,807.82 and Y = 119,697.44; thence East a distance of 1,200.03 feet to a point having Coordinates of X = 2,186,007.85 and Y = 119,697.44; thence South 14 degrees 12 minutes 01 seconds West a distance of 2,389.16 feet to a point having Coordinates of X = 2,185,421.75 and Y = 117,381.27, on the 3 Mile Line as set out in the June, 1975, decree of the Supreme Court; thence along said 3 Mile Line the following courses: Southwesterly along a curve to the right having a radius of 18,240.60 feet and a radius point Coordinate of X = 2,184,788.98 and Y = 135,610.91 to a point having a Coordinate of X = 2,185,156.00 and Y = 117,374.00; thence Southwesterly along a curve having a radius of 18,240.60 feet and a radius point Coordinate of X = 2,182,168.46 and Y = 135,368.28 to a point having Coordinates of X = 2,181,100.00 and Y = 117,159.00; thence North 86 degrees 39 minutes 04 seconds West a distance of 1,523.60 feet to a point having Coordinates of X = 2,179,579.00 and Y = 117,248.00; thence Northwesterly along a curve to the right having a radius of 18,240.60 feet

and a radius point Coordinate of X = 2,180,637.11 and Y = 135,457.89 to a point having Coordinates of X = 2,177,979.00 and Y = 117,412.00; thence South 88 degrees 52 minutes 17 seconds West a distance of 5,280.02 feet to a point having Coordinates of X = 2,172,700.00 and Y = 117,308.00; thence South 77 degrees 59 minutes 23 seconds West a distance of 1,124.62 feet to a point having Coordinates of X = 2,171,600.00 and Y = 117,073.98; thence North a distance of 1,497.79 feet to a point having Coordinates of X = 2,171,600.00 and Y = 118,571.77; thence East a distance of 2,000.00 feet to a point having Coordinates of X = 2,173,600.00 and Y = 118,571.77; thence North a distance of 2,152.21 feet to a point having Coordinates of X = 2,173,600.00 and Y = 120,723.98; thence West a distance 2,000.00 feet to a point having Coordinates of X = 2,171,600.00 and Y = 120,723.98; thence North a distance of 6,032.94 feet to the point of beginning, containing approximately **2,500.00 acres**, all as more particularly outlined on a plat on file in the Office of Mineral Resources, Department of Natural Resources, **LESS AND EXCEPT** that portion thereof, if any, lying seaward of the line three nautical miles from the coast line of Louisiana, as said three mile line has been decreed by the Supreme Court of the United States, as determined by a Special Master appointed therein, in litigation styled **United States v. State of Louisiana et al No. 9 Original**, in 1975, as provided by the applicant. All bearings, distances and coordinates are based on Louisiana Coordinate System of 1927, (North or South Zone).

NOTE: The above description of the Tract nominated for lease has been provided and corrected, where required, exclusively by the nomination party. Any mineral lease selected from this Tract and awarded by the Louisiana State Mineral Board shall be without warranty of any kind, either express, implied, or statutory, including, but not limited to, the implied warranties of merchantability and fitness for a particular purpose. Should the mineral lease awarded by the Louisiana State Mineral Board be subsequently modified, cancelled or abrogated due to the existence of conflicting leases, operating agreements, private claims or other future obligations or conditions which may affect all or any portion of the leased Tract, it shall not relieve the Lessee of the obligation to pay any bonus due thereon to the Louisiana State Mineral Board, nor shall the Louisiana State Mineral Board be obligated to refund any consideration paid by the Lessor prior to such modification, cancellation, or abrogation, including, but not limited to, bonuses, rentals and royalties.

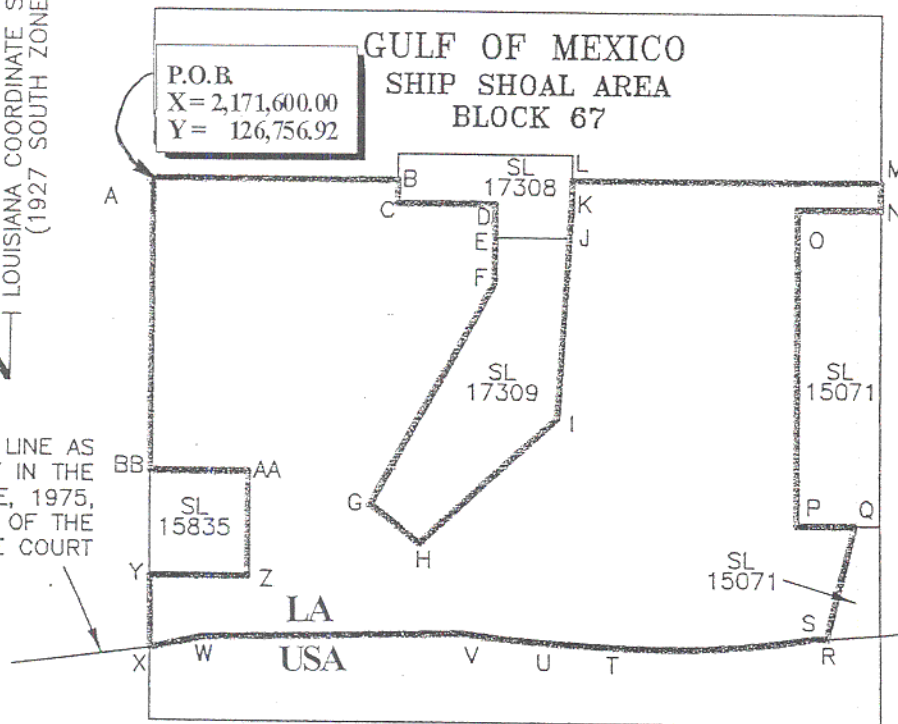
NOTE: The State of Louisiana does hereby reserve, and this lease shall be subject to, the imprescriptible right of surface use in the nature of a servitude in favor of the Department of Natural Resources, including its Offices and Commissions, for the sole purpose of implementing, constructing, servicing and maintaining approved coastal zone management and/or restoration projects. Utilization of any and all rights derived under this lease by the mineral lessee, its agents, successors or assigns, shall not interfere with nor hinder the reasonable surface use by the Department of Natural Resources, its Offices or Commissions, as herein above reserved.

Applicant: G.K. Grady

Bidder	Cash Payment	Price / Acre	Rental	Oil	Gas	Other

LOUISIANA COORDINATE SYSTEM
(1927 SOUTH ZONE)

3 MILE LINE AS
SET OUT IN THE
JUNE, 1975,
DECREE OF THE
SUPREME COURT



COURSES:

A-B	EAST	5000.00'
B-C	SOUTH	485.15'
C-D	EAST	2000.00'
D-E	SOUTH	720.60'
E-F	SOUTH	929.41'
F-G	S28°47'12"W	5191.58'
G-H	S51°20'25"E	1280.63'
H-I	N47°07'16"E	3821.00'
I-J	N03°15'07"E	3685.34'
J-K	N03°15'07"E	721.76'
K-L	NORTH	485.24'
L-M	EAST	6321.91'
M-N	S00°17'30"E	559.52'
N-O	WEST	1700.03'
O-P	S00°17'30"E	6500.14'
P-Q	EAST	1200.03'
Q-R	S14°12'01"W	2389.16'
R-S	RADIUS: 18240.60'	
	RADIUS POINT:	
	X=2184788.98	
	Y= 135610.91	
S-T	RADIUS: 18240.60'	
	RADIUS POINT:	
	X=2182168.46	
	Y= 135368.28	
T-U	N86°39'04"W	1523.60'
U-V	RADIUS: 18240.60'	
	RADIUS POINT:	
	X=2180637.11	
	Y= 135457.89	
V-W	S88°52'17"W	5280.02'
W-X	S77°59'23"W	1124.62'
X-Y	NORTH	1497.79'
Y-Z	EAST	2000.00'
Z-AA	NORTH	2152.21'
AA-BB	WEST	2000.00'
BB-A	NORTH	6032.94'

A	X=2171600.00	Y=126756.92	O	X=2184774.73	Y=126197.50
B	X=2176600.00	Y=126756.92	P	X=2184807.82	Y=119697.44
C	X=2176600.00	Y=126271.77	Q	X=2186007.85	Y=119697.44
D	X=2178600.00	Y=126271.77	R	X=2185421.75	Y=117381.29
E	X=2178600.00	Y=125551.18	S	X=2185156.00	Y=117374.00
F	X=2178600.00	Y=124621.77	T	X=2181100.00	Y=117159.00
G	X=2176100.00	Y=120071.77	U	X=2179579.00	Y=117248.00
H	X=2177100.00	Y=119271.77	V	X=2177979.00	Y=117412.00
I	X=2179900.00	Y=121871.77	W	X=2172700.00	Y=117308.00
J	X=2180109.06	Y=125551.18	X	X=2171600.00	Y=117073.98
K	X=2180150.00	Y=126271.77	Y	X=2171600.00	Y=118571.77
L	X=2180150.00	Y=126757.01	Z	X=2173600.00	Y=118571.77
M	X=2186471.91	Y=126757.01	AA	X=2173600.00	Y=120723.98
N	X=2186474.76	Y=126197.50	BB	X=2171600.00	Y=120723.98

TR 34827
2,500.00 ± ACS.
SEPT., 2002

GRAPHIC SCALE

0 2000' 4000' 8000'

NOTE: UNLESS OTHERWISE NOTED
COORDINATES ARE BASED ON NAD27.

NOTE:
NAD83 COORDINATES WERE CONVERTED
TO/FROM NAD27 COORDINATES USING THE
CORPSCON SOFTWARE FROM THE U.S.
ARMY TOPOGRAPHIC ENGINEERING CENTER.

NO.	DATE	REVISION
-----	------	----------

BLOCK 67, SHIP SHOAL AREA
GULF OF MEXICO
TERREBONNE PARISH, LOUISIANA

TRACT 34828 - PORTION OF BLOCK 1, SOUTH PELTO AREA, Terrebonne Parish, Louisiana

That portion of Block 1, South Peltó Area, Terrebonne Parish, Louisiana, belonging to the State of Louisiana and not presently under mineral lease on September 11, 2002, being more fully described as follows: Beginning at the Northeast corner of Block 1, South Peltó Area, said point having Coordinates of X = 2,202,046.02 and Y = 128,484.76; thence South a distance of 839.74 feet to a point on the East line of said Block 1 having Coordinates of X = 2,202,046.02 and Y = 127,645.02; thence West a distance of 10,868.22 feet to a point on the East line of State Lease No. 15074 having Coordinates of X = 2,191,177.80 and Y = 127,645.02; thence North 18 degrees 45 minutes 53 seconds East a distance of 886.88 feet to a point on the East line of said State Lease No. 15074 having Coordinates of X = 2,191,463.09 and Y = 128,484.76; thence East along the North line of said Block 1 a distance of 10,582.93 feet to the point of beginning, containing approximately **206.77 acres**, all as more particularly outlined on a plat on file in the Office of Mineral Resources, Department of Natural Resources, as provided by the applicant. All bearings, distances and coordinates are based on Louisiana Coordinate System of 1927, (North or South Zone).

NOTE: The above description of the Tract nominated for lease has been provided and corrected, where required, exclusively by the nomination party. Any mineral lease selected from this Tract and awarded by the Louisiana State Mineral Board shall be without warranty of any kind, either express, implied, or statutory, including, but not limited to, the implied warranties of merchantability and fitness for a particular purpose. Should the mineral lease awarded by the Louisiana State Mineral Board be subsequently modified, cancelled or abrogated due to the existence of conflicting leases, operating agreements, private claims or other future obligations or conditions which may affect all or any portion of the leased Tract, it shall not relieve the Lessee of the obligation to pay any bonus due thereon to the Louisiana State Mineral Board, nor shall the Louisiana State Mineral Board be obligated to refund any consideration paid by the Lessor prior to such modification, cancellation, or abrogation, including, but not limited to, bonuses, rentals and royalties.

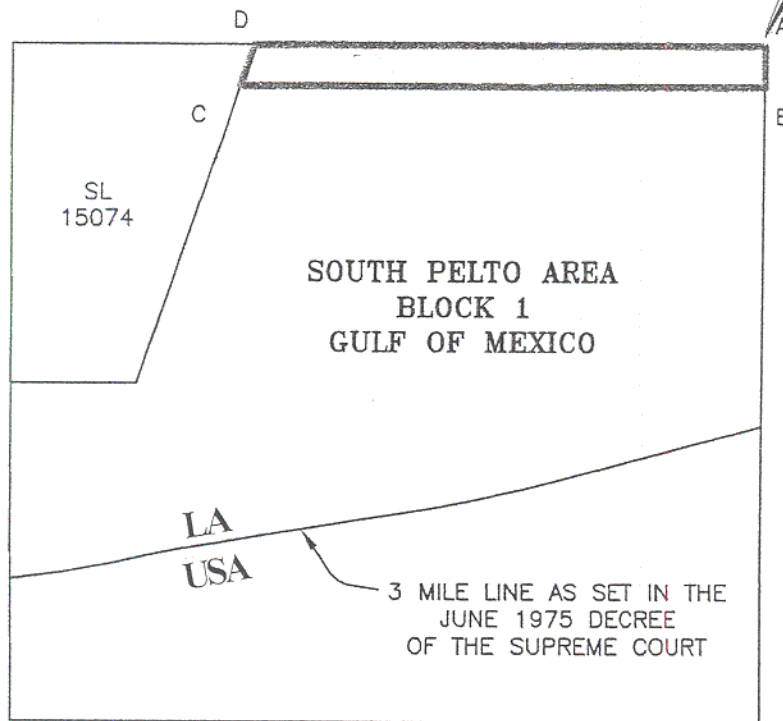
NOTE: The State of Louisiana does hereby reserve, and this lease shall be subject to, the imprescriptible right of surface use in the nature of a servitude in favor of the Department of Natural Resources, including its Offices and Commissions, for the sole purpose of implementing, constructing, servicing and maintaining approved coastal zone management and/or restoration projects. Utilization of any and all rights derived under this lease by the mineral lessee, its agents, successors or assigns, shall not interfere with nor hinder the reasonable surface use by the Department of Natural Resources, its Offices or Commissions, as herein above reserved.

Applicant: G.K. Grady

Bidder	Cash Payment	Price / Acre	Rental	Oil	Gas	Other

P.O.B. 76
X= 2,202,046.02
Y= 128,484.76

LOUISIANA COORDINATE SYSTEM
(1927 SOUTH ZONE)



A- X=2202046.02
Y= 128484.76
B- X=2202046.02
Y= 127645.02
C- X=2191177.80
Y= 127645.02
D- X=2191463.09
Y= 128484.76

TR 34828
206.77 ± ACS.
SEPT., 2002

COURSES

A-B: SOUTH 839.74'
B-C: WEST 10868.22'
C-D: N18°45'53"E 886.88'
D-A: EAST 10582.93'

GRAPHIC SCALE

0 2000' 4000' 8000'

NOTE: UNLESS OTHERWISE NOTED
COORDINATES ARE BASED ON NAD27.

NOTE:
NAD83 COORDINATES WERE CONVERTED
TO/FROM NAD27 COORDINATES USING THE
CORPSCON SOFTWARE FROM THE U.S.
ARMY TOPOGRAPHIC ENGINEERING CENTER.

NO.	DATE	REVISION
-----	------	----------

BLOCK 1, SOUTH PELTO AREA
GULF OF MEXICO
TERREBONNE PARISH, LOUISIANA

TRACT 34829 - PORTION OF BLOCK 1, SOUTH PELTO AREA, Terrebonne Parish, Louisiana

That portion of Block 1, South Peltó Area, Terrebonne Parish, Louisiana, belonging to the State of Louisiana and not presently under mineral lease on September 11, 2002, being more fully described as follows: Beginning at a point on the East line of Block 1, South Peltó Area, having Corodimates of X = 2,202,046.02 and Y = 127,645.02; thence South along the East line of said Block 1 a distance of 7,004.69 feet to a point on the 3 Mile Line as set out in the June, 1975, decree of the Supreme Court, said point having Coordinates of X = 2,202,046.02 and Y = 120,640.33; thence Southwest along the 3 Mile Line the following courses: South 75 degrees 14 minutes 51 seconds West a distance of 5,243.89 feet to a point having Coordinates of X = 2,196,975.00 and Y = 119,305.00; thence along a curve to the right having a radius of 18,240.60 feet and a radius point of X = 2,192,325.86 and Y = 136,943.17 to a point having Coordinates of X = 2,195,302.00 and Y = 118,947.00; thence South 80 degrees 37 minutes 43 seconds West a distance of 5,385.88 feet to a point having Coordinates of X = 2,189,988.00 and Y = 118,070.00; thence South 77 degrees 54 minutes 59 seconds West a distance of 1,025.86 feet to a point at the Southeast corner of State Lease No. 17311 having Coordinates of X = 2,188,984.87 and Y = 117,855.25; thence North 34 degrees 23 minutes 03 seconds West along the Northeasterly line of said State Lease No. 17311 a distance of 4,402.31 feet to a point at the Northern corner of State Lease No. 17311, also being the Southwest corner of State Lease No. 15074 and being on the East line of said Block 1 having Coordinates of X = 2,186,498.71 and Y = 121,488.34; thence East along the Southern line of said State Lease No. 15074 a distance of 2,587.41 feet to a point at the Southeast corner of said State Lease No. 15074 having Coordinates of X = 2,189,086.12 and Y = 121,488.34; thence North 18 degrees 45 minutes 53 seconds East along the Easterly line of said State Lease No. 15074 a distance of 6,502.29 feet to a point having Coordinates of X = 2,191,177.80 and Y = 127,645.02; thence East a distance of 10,868.22 feet to the point of beginning, containing approximately **2,500.00 acres, LESS AND EXCEPT** that portion thereof, if any, lying seaward of the line three nautical miles from the coast line of Louisiana, as said three mile line has been decreed by the Supreme Court of the United States, as determined by a Special Master appointed therein, in litigation styled **United States v. State of Louisiana et al No. 9 Original**, in 1975, all as more particularly outlined on a plat on file in the Office of Mineral Resources, Department of Natural Resources, as provided by the applicant. All bearings, distances and coordinates are based on Louisiana Coordinate System of 1927, (North or South Zone).

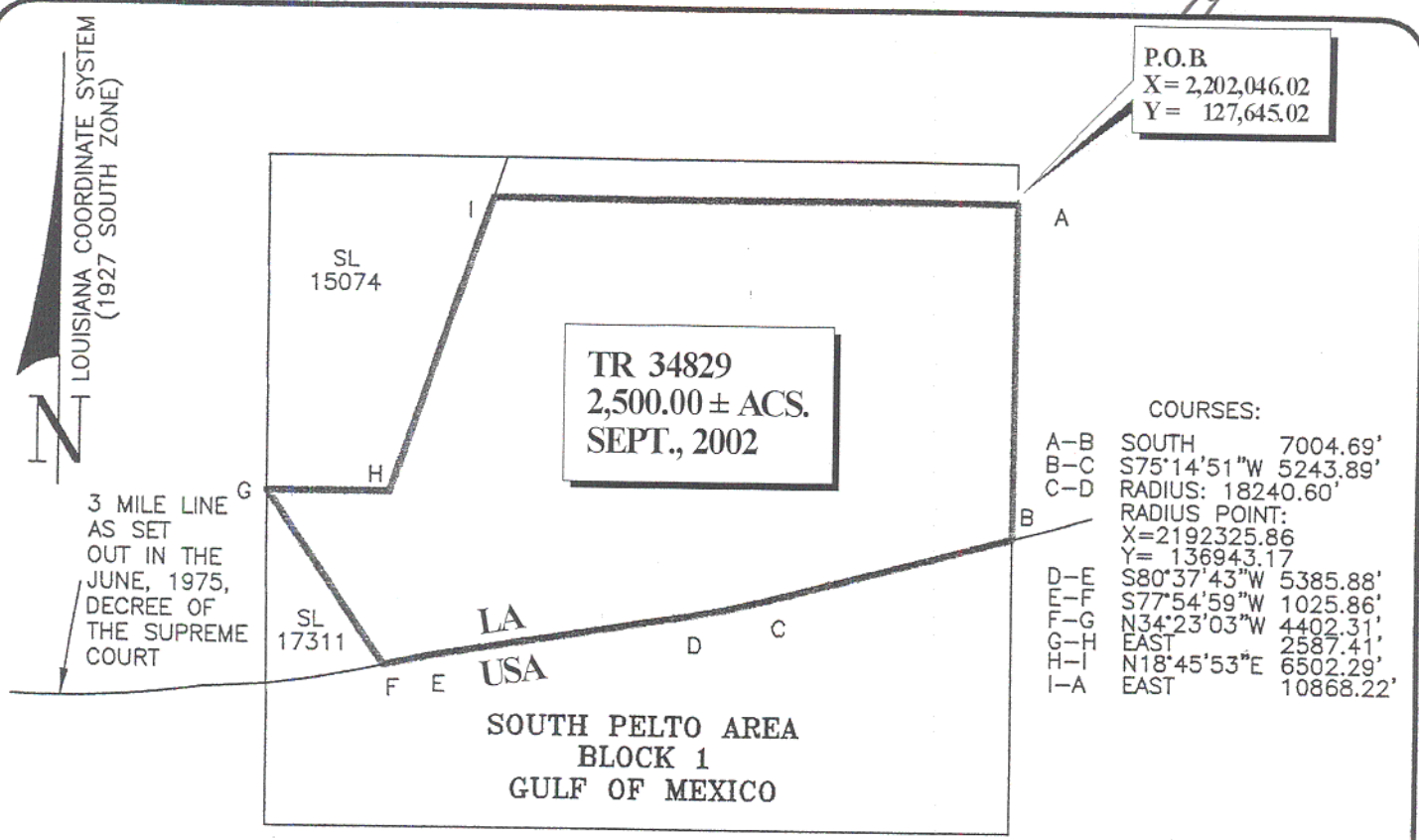
NOTE: The above description of the Tract nominated for lease has been provided and corrected, where required, exclusively by the nomination party. Any mineral lease selected from this Tract and awarded by the Louisiana State Mineral Board shall be without warranty of any kind, either express, implied, or statutory, including, but not limited to, the implied warranties of merchantability and fitness for a particular purpose. Should the mineral lease awarded by the Louisiana State Mineral Board be subsequently modified, cancelled or abrogated due to the

existence of conflicting leases, operating agreements, private claims or other future obligations or conditions which may affect all or any portion of the leased Tract, it shall not relieve the Lessee of the obligation to pay any bonus due thereon to the Louisiana State Mineral Board, not shall the Louisiana State Mineral Board be obligated to refund any consideration paid by the Lessor prior to such modification, cancellation, or abrogation, including, but not limited to, bonuses, rentals and royalties.

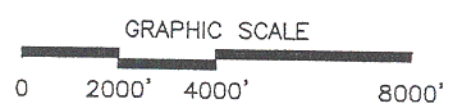
NOTE: The State of Louisiana does hereby reserve, and this lease shall be subject to, the imprescriptible right of surface use in the nature of a servitude in favor of the Department of Natural Resources, including its Offices and Commissions, for the sole purpose of implementing, constructing, servicing and maintaining approved coastal zone management and/or restoration projects. Utilization of any and all rights derived under this lease by the mineral lessee, its agents, successors or assigns, shall not interfere with nor hinder the reasonable surface use by the Department of Natural Resources, its Offices or Commissions, as herein above reserved.

Applicant: G.K. Grady

Bidder	Cash Payment	Price / Acre	Rental	Oil	Gas	Other



A	X=2202046.02	Y=127645.02
B	X=2202046.02	Y=120640.33
C	X=2196975.00	Y=119305.00
D	X=2195302.00	Y=118947.00
E	X=2189988.00	Y=118070.00
F	X=2188984.87	Y=117855.25
G	X=2186498.71	Y=121488.34
H	X=2189086.12	Y=121488.34
I	X=2191177.80	Y=127645.02



NOTE: UNLESS OTHERWISE NOTED
COORDINATES ARE BASED ON NAD27.

NOTE:
NAD83 COORDINATES WERE CONVERTED
TO/FROM NAD27 COORDINATES USING THE
CORPSCON SOFTWARE FROM THE U.S.
ARMY TOPOGRAPHIC ENGINEERING CENTER.

NO.	DATE	REVISION
<p>BLOCK 1, SOUTH PELTO AREA GULF OF MEXICO TERREBONNE PARISH, LOUISIANA</p>		

Tract 34830 - Portion of Block 60, Chandeleur Sound Area, St. Bernard, Louisiana

That portion of Block 60, Chandeleur Sound Area, St. Bernard Parish, Louisiana, belonging to the State of Louisiana and not presently under mineral lease on September 11, 2002, being more fully described as follows: Beginning at a point having Coordinates of X = 2,782,850.00 and Y = 381,330.00, said point also being the Southeast corner of Block 60, Chandeleur Sound Area; thence West 14,186.28 feet on and along the South line of said Block 60, Chandeleur Sound Area, to a point having Coordinates of X = 2,768,663.72 and Y = 381,330.00; thence North 30 degrees 13 minutes 33 seconds East 221.05 feet to a point having Coordinates of X = 2,768,775.00 and Y = 381,521.00; thence North 37 degrees 37 minutes 46 seconds East 2,987.46 feet to a point having Coordinates of X = 2,770,599.00 and Y = 383,887.00; thence North 28 degrees 59 minutes 47 seconds East 4,006.17 feet to a point having Coordinates of X = 2,772,541.00 and Y = 387,391.00; thence North 31 degrees 31 minutes 26 seconds East 1,541.49 feet to a point having Coordinates of X = 2,773,346.97 and Y = 388,705.00; thence East 9,503.03 feet to a point having Coordinates of X = 2,782,850.00 and Y = 388,705.00, said point also being on the East line of said Block 60, Chandeleur Sound Area; thence South 7,375.00 feet on and along said East line of said Block 60, Chandeleur Sound Area, to the point of beginning, containing approximately **1,983.11 acres**, all as more particularly outlined on a plat on file in the Office of Mineral Resources, Department of Natural Resources, as provided by the applicant. All bearings, distances, and coordinates are based on Louisiana Coordinate System of 1927 (South Zone).

NOTE: The above description of the Tract nominated for lease has been provided and corrected, where required, exclusively by the nomination party. Any mineral lease selected from this Tract and awarded by the Louisiana State Mineral Board shall be without warranty of any kind, either express, implied, or statutory, including, but not limited to, the implied warranties of merchantability and fitness for a particular purpose. Should the mineral lease awarded by the Louisiana State Mineral Board be subsequently modified, cancelled or abrogated due to the existence of conflicting leases, operating agreements, private claims or other future obligations or conditions which may affect all or any portion of the leased Tract, it shall not relieve the Lessee of the obligation to pay any bonus due thereon to the Louisiana State Mineral Board, nor shall the Louisiana State Mineral Board be obligated to refund any consideration paid by the Lessor prior to such modification, cancellation, or abrogation, including, but not limited to, bonuses, rentals and royalties.

NOTE: The State of Louisiana does hereby reserve, and this lease shall be subject to, the imprescriptible right of surface use in the nature of a servitude in favor of the Department of Natural Resources, including its Offices and Commissions, for the sole purpose of implementing, constructing, servicing and maintaining approved coastal zone management and/or restoration projects. Utilization of any and all rights derived under this lease by the mineral lessee, its agents, successors or assigns,

shall not interfere with nor hinder the reasonable surface use by the Department of Natural Resources, its Offices or Commissions, as herein above reserved.

Applicant: Robert A. Schroeder, Inc.

Bidder	Cash Payment	Price / Acre	Rental	Oil	Gas	Other

N31°31'26"E
1541.49'

EAST 9503.03'

X = 2,773,346.97
Y = 388,705.00

X = 2,772,541.00
Y = 387,391.00

X = 2,770,599.00
Y = 383,887.00

X = 2,768,775.00
Y = 381,521.00

X = 2,782,850.00
Y = 388,705.00

BLOCK 28
CHANDELEUR AREA

TR 34830
1,983.11 ± ACS.
SEPT., 2002

P.O.B.

(S.E. COR. BLOCK 60)

X = 2,782,850.00
Y = 381,330.00

BLOCK 60
CHANDELEUR SOUND AREA

WEST 14186.28'

MAIN PASS AREA,

REVISED

N30°13'33"E
221.05'

BLOCK 6

BLOCK 91

X = 2,768,663.72
Y = 381,330.00

SL 16262

SL 17028

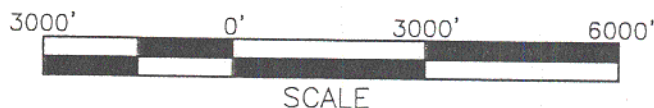
SL
17328

SL
3771

STATE OF LOUISIANA
FEDERAL OFFSHORE WATERS
GULF OF MEXICO

BLOCK 60; CHANDELEUR SOUND AREA
ST. BERNARD PARISH, LOUISIANA
SCALE 1" = 3000'

ALL COORDINATES, BEARINGS AND DISTANCES
ARE GRID, AND ARE ON THE LOUISIANA
LAMBERT PLANE COORDINATE SYSTEM,
SOUTH ZONE, 1927 NORTH AMERICAN
DATUM.



TRACT 34831 - Portion of Block 6, Main Pass Area, Revised, St. Bernard Parish, Louisiana

That portion of Block 6, Main Pass Area, Revised, St. Bernard Parish, Louisiana, belonging to the State of Louisiana and not presently under mineral lease on September 11, 2002, being more fully described as follows: Beginning at a point having Coordinates of X = 2,782,850.00 and Y = 381,330.00, said point also being the Northeast corner of Block 6, Main Pass Area, Revised; thence South 8,142.00 feet on and along the East line of said Block 6, Main Pass Area, Revised, to a point having Coordinates of X = 2,782,850.00 and Y = 373,188.00, said point also being on the Northern boundary of State of Louisiana - State Lease No. 17328; thence on and along said Northern boundary of said State of Louisiana - State Lease No. 17328, on and along the Northern and Eastern boundaries of State of Louisiana - State Lease No. 17028, and on and along the Northern boundary of State of Louisiana - State Lease No. 16262 the following courses and distances, to-wit: South 69 degrees 05 minutes 35 seconds West 2,836.77 feet to a point having Coordinates of X = 2,780,200.00 and Y = 372,175.70; South 69 degrees 05 minutes 35 seconds West 1,445.15 feet to a point having Coordinates of X = 2,778,850.00 and Y = 371,660.00; North 3,670.00 feet to a point having Coordinates of X = 2,778,850.00 and Y = 375,330.00; East 1,350.00 feet to a point having Coordinates of X = 2,780,200.00 and Y = 375,330.00; North 3,452.62 feet to a point having Coordinates of X = 2,780,200.00 and Y = 378,782.62, said point also being the Northeast corner of said State of Louisiana - State Lease No. 17028; West 5,029.33 feet to a point having Coordinates of X = 2,775,170.67 and Y = 378,782.62, said point also being the Northwest corner of said State of Louisiana - State Lease No. 17028 and the Northeast corner of said State of Louisiana - State Lease No. 16262; and West 4,970.67 feet to a point having Coordinates of X = 2,770,200.00 and Y = 378,782.62, said point also being the Northwest corner of said State of Louisiana - State Lease No. 16262; thence West 2,100.00 feet to a point having Coordinates of X = 2,768,100.00 and Y = 378,782.62, said point also being on the West line of said Block 6, Main Pass Area, Revised; thence North 1,579.81 feet on and along said West line of said Block 6, Main Pass Area, Revised, to a point having Coordinates of X = 2,768,100.00 and Y = 380,362.43; thence North 30 degrees 13 minutes 32 seconds East 1,119.81 feet to a point having Coordinates of X = 2,768,663.72 and Y = 381,330.00, said point also being on the North line of said Block 6, Main Pass Area, Revised; thence East 14,186.28 feet on and along said North line of said Block 6, Main Pass Area, Revised, to the point of beginning, containing approximately **1,333.21 acres**, all as more particularly outlined on a plat on file in the Office of Mineral Resources, Department of Natural Resources, as provided by the applicant. All bearings, distances and coordinates are based on Louisiana Coordinate System of 1927, (North or South Zone).

NOTE: The above description of the Tract nominated for lease has been provided and corrected, where required, exclusively by the nomination party. Any mineral lease selected from this Tract and awarded by the Louisiana State Mineral Board shall be without warranty of any kind, either express, implied, or statutory, including, but not limited to, the

implied warranties of merchantability and fitness for a particular purpose. Should the mineral lease awarded by the Louisiana State Mineral Board be subsequently modified, cancelled or abrogated due to the existence of conflicting leases, operating agreements, private claims or other future obligations or conditions which may affect all or any portion of the leased Tract, it shall not relieve the Lessee of the obligation to pay any bonus due thereon to the Louisiana State Mineral Board, not shall the Louisiana State Mineral Board be obligated to refund any consideration paid by the Lessor prior to such modification, cancellation, or abrogation, including, but not limited to, bonuses, rentals and royalties.

NOTE: The State of Louisiana does hereby reserve, and this lease shall be subject to, the imprescriptible right of surface use in the nature of a servitude in favor of the Department of Natural Resources, including its Offices and Commissions, for the sole purpose of implementing, constructing, servicing and maintaining approved coastal zone management and/or restoration projects. Utilization of any and all rights derived under this lease by the mineral lessee, its agents, successors or assigns, shall not interfere with nor hinder the reasonable surface use by the Department of Natural Resources, its Offices or Commissions, as herein above reserved.

Applicant: Robert A. Schroeder, Inc.

Bidder	Cash Payment	Price / Acre	Rental	Oil	Gas	Other

BLOCK 60 CHANDELEUR SOUND AREA

BLOCK 28 CHANDELEUR AREA

P.O.B.

(N.E. COR. BLOCK 6)
X = 2,782,850.00
Y = 381,330.00

STATE OF LOUISIANA
INLAND WATERS
STATE OF LOUISIANA
OFFSHORE WATERS

X = 2,768,663.72
Y = 381,330.00

EAST 14186.28'

MAIN PASS AREA,

REVISED

TR 34831
1,333.21 ± ACS.
SEPT., 2002

NORTH

N30°13'32"E
1119.81'

X = 2,768,100.00
Y = 380,362.43

2100.00'
WEST

4970.67'
WEST

5029.33'
WEST

X = 2,770,200.00
Y = 378,782.62

X = 2,780,200.00
Y = 378,782.62

X = 2,775,170.67
Y = 378,782.62

X = 2,768,100.00
Y = 378,782.62

X = 2,778,850.00
Y = 375,330.00

EAST

3452.62'
NORTH

SL 16262

SL 17028

8142.00'
SOUTH

X = 2,780,200.00
Y = 375,330.00

X = 2,782,850.00
Y = 373,188.00

1350'
NORTH

SEE DETAIL "A"

3670.00'
NORTH

X = 2,778,850.00
Y = 371,660.00

1445.15'
2836.77'

S69°05'35"W
SL 17328

X = 2,780,200.00
Y = 372,175.70

BLOCK 6

SL 3771

STATE OF LOUISIANA
FEDERAL OFFSHORE WATERS
GULF OF MEXICO
BLOCK 91

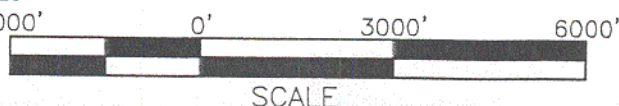
DETAIL "A"
SCALE: 1" = 10'

S69°05'35"W
1445.15'
S69°05'35"W
2836.77'
SL 17028
S69°03'27"W
1445.49'
SOUTH
1.89'
SL 17328



BLOCK 6; MAIN PASS AREA, REVISED
ST. BERNARD PARISH, LOUISIANA
SCALE 1" = 3000'

ALL COORDINATES, BEARINGS AND DISTANCES
ARE GRID, AND ARE ON THE LOUISIANA
LAMBERT PLANE COORDINATE SYSTEM,
SOUTH ZONE, 1927 NORTH AMERICAN
DATUM.



TRACT 34832 - Portion of Block 6, Main Pass Area, Revised, St. Bernard Parish, Louisiana

That portion of Block 6, Main Pass Area, Revised, St. Bernard Parish, Louisiana, belonging to the State of Louisiana and not presently under mineral lease on September 11, 2002, being more fully described as follows: Beginning at a point having Coordinates of X = 2,782,850.00 and Y = 370,041.00, said point also being on the East line of Block 6, Main Pass Area, Revised, and on the Northern boundary of State Lease No. 3771, as amended; thence on and along said Northern boundary of said State Lease No. 3771, as amended, the following courses and distances, to-wit: South 69 degrees 43 minutes 46 seconds West 6,693.55 feet to a point having Coordinates of X = 2,776,571.00 and Y = 367,722.00; West 4,440.79 feet to a point having Coordinates of X = 2,772,130.21 and Y = 367,722.00, said point also being on the Southern boundary of State Lease No. 16262; thence on and along said Southern boundary of said State Lease No. 16262, on and along the Southern boundary of said State Lease No. 17028, and on and along the Southern boundary of said State Lease No. 17328 the following courses and distances, to-wit: North 24 degrees 54 minutes 18 seconds East 1,827.99 feet to a point having Coordinates of X = 2,772,900.00 and Y = 369,380.00; North 69 degrees 03 minutes 27 seconds East 1,287.38 feet to a point having Coordinates of X = 2,774,102.34 and Y = 369,840.15, said point also being the Southeast corner of said State Lease No. 16262 and the Southwest corner of said State Lease No. 17028; North 69 degrees 03 minutes 27 seconds East 5,083.48 feet to a point having Coordinates of X = 2,778,850.00 and Y = 371,657.15, said point also being the Southeast corner of said State Lease No. 17028; and South 67 degrees 59 minutes 58 seconds East 4,314.16 feet to the point of beginning, containing approximately **516.66 acres**, all as more particularly outlined on a plat on file in the Office of Mineral Resources, Department of Natural Resources, as provided by applicant, **LESS AND EXCEPT** that portion thereof, if any, lying seaward of the line three nautical miles from the coast line of Louisiana, as said three mile line has been decreed by the Supreme Court of the United States, as determined by a Special Master appointed therein, in litigation styled **United States v. State of Louisiana et al No. 9 Original**, in 1975. All bearings, distances and coordinates are based on the Louisiana Coordinate System of 1927, (South Zone).

NOTE: The above description of the Tract nominated for lease has been provided and corrected, where required, exclusively by the nomination party. Any mineral lease selected from this Tract and awarded by the Louisiana State Mineral Board shall be without warranty of any kind, either express, implied, or statutory, including, but not limited to, the implied warranties of merchantability and fitness for a particular purpose. Should the mineral lease awarded by the Louisiana State Mineral Board be subsequently modified, cancelled or abrogated due to the existence of conflicting leases, operating agreements, private claims or other future obligations or conditions which may affect all or any portion of the leased Tract, it shall not relieve the Lessee of the obligation to pay any bonus due thereon to the Louisiana State Mineral Board, nor shall the Louisiana State Mineral Board be obligated to refund any consideration

paid by the Lessor prior to such modification, cancellation, or abrogation, including, but not limited to, bonuses, rentals and royalties.

NOTE: The State of Louisiana does hereby reserve, and this lease shall be subject to, the imprescriptible right of surface use in the nature of a servitude in favor of the Department of Natural Resources, including its Offices and Commissions, for the sole purpose of implementing, constructing, servicing and maintaining approved coastal zone management and/or restoration projects. Utilization of any and all rights derived under this lease by the mineral lessee, its agents, successors or assigns, shall not interfere with nor hinder the reasonable surface use by the Department of Natural Resources, its Offices or Commissions, as herein above reserved.

Applicant: Robert A. Schroeder, Inc.

Bidder	Cash Payment	Price / Acre	Rental	Oil	Gas	Other

STATE OF LOUISIANA
INLAND WATERS
STATE OF LOUISIANA
OFFSHORE WATERS

BLOCK 60 CHANDELEUR SOUND AREA

BLOCK 28 CHANDELEUR AREA

MAIN PASS AREA,

REVISED OF MEXICO

BLOCK 6

SL 16262

SL 17028

GULF

SL
17328

X = 2,774,102.34
Y = 369,840.15

N69°03'27"E
1287.38'

X = 2,772,900.00
Y = 369,380.00

N24°54'18"E
1827.99'

X = 2,772,130.21
Y = 367,722.00

SL 3771

X = 2,778,850.00
Y = 371,657.15

N69°03'27"E
5083.48'

S67°59'58"E
4314.16'

516.66 ACRES

6693.55'
S69°43'46"W

4440.79'

WEST

X = 2,776,571.00
Y = 367,722.00

STATE OF LOUISIANA
FEDERAL OFFSHORE WATERS

BLOCK 91

P.O.B.

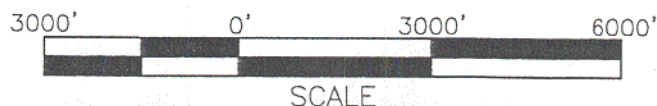
X = 2,782,850.00
Y = 370,041.00

TR 34832
516.66 ± ACS.
SEPT., 2002



BLOCK 6; MAIN PASS AREA, REVISED
ST. BERNARD PARISH, LOUISIANA
SCALE 1" = 3000'

ALL COORDINATES, BEARINGS AND DISTANCES
ARE GRID, AND ARE ON THE LOUISIANA
LAMBERT PLANE COORDINATE SYSTEM,
SOUTH ZONE, 1927 NORTH AMERICAN
DATUM.



TRACT 34833 - Portion of Block 28, Chandeleur Sound Area, St. Bernard Parish, Louisiana

That portion of Block 28, Chandeleur Sound Area, St. Bernard Parish, Louisiana, belonging to the State of Louisiana and not presently under mineral lease on September 11, 2002, being more fully described as follows: Beginning at a point having Coordinates of X = 2,782,850.00 and Y = 381,330.00, said point also being the Southwest corner of Block 28, Chandeleur Area; thence North 7,375.00 feet on and along the West line of said Block 28, Chandeleur Area, to a point having Coordinates of X = 2,782,850.00 and Y = 388,705.00; thence East 13,024.15 feet to a point having Coordinates of X = 2,795,874.15 and Y = 388,705.00; thence South 30 degrees 28 minutes 24 seconds West 946.78 feet to a point having Coordinates of X = 2,795,394.00 and Y = 387,889.00; thence Southwesterly 161.90 feet on a non-tangent curve to the right having a radius of 18,240.60 feet to a point having Coordinates of X = 2,795,311.00 and Y = 387,750.00; thence South 30 degrees 59 minutes 02 seconds West 3,401.33 feet to a point having Coordinates of X = 2,793,560.00 and Y = 384,834.00; thence Southwesterly 2,309.95 feet on a non-tangent curve to the right having a radius of 18,240.60 feet to a point having Coordinates of X = 2,792,249.00 and Y = 382,934.00; thence South 38 degrees 14 minutes 21 seconds West 2,042.18 feet to a point having Coordinates of X = 2,790,985.00 and Y = 381,330.00, said point also being on the South line of said Block 28, Chandeleur Area; thence West 8,135.00 feet on and along said South line of said Block 28, Chandeleur Area, to the point of beginning, containing approximately **1,817.61 acres**, all as more particularly outlined on a plat on file in the Office of Mineral Resources, Department of Natural Resources, as provided by the applicant, **LESS AND EXCEPT** that portion thereof, if any, lying seaward of the line three nautical miles from the coast line of Louisiana, as said three mile line has been decreed by the Supreme Court of the United States, as determined by a Special Master appointed therein, in litigation styled **United States v. State of Louisiana et al No. 9 Original**, in 1975. All bearings, distances, and coordinates are based on Louisiana Coordinate System of 1927 (South Zone).

NOTE: The above description of the Tract nominated for lease has been provided and corrected, where required, exclusively by the nomination party. Any mineral lease selected from this Tract and awarded by the Louisiana State Mineral Board shall be without warranty of any kind, either express, implied, or statutory, including, but not limited to, the implied warranties of merchantability and fitness for a particular purpose. Should the mineral lease awarded by the Louisiana State Mineral Board be subsequently modified, cancelled or abrogated due to the existence of conflicting leases, operating agreements, private claims or other future obligations or conditions which may affect all or any portion of the leased Tract, it shall not relieve the Lessee of the obligation to pay any bonus due thereon to the Louisiana State Mineral Board, nor shall the Louisiana State Mineral Board be obligated to refund any consideration paid by the Lessor prior to such modification, cancellation, or abrogation, including, but not limited to, bonuses, rentals and royalties.

NOTE: The State of Louisiana does hereby reserve, and this lease shall be subject to, the imprescriptible right of surface use in the nature of a servitude in favor of the Department of Natural Resources, including its Offices and Commissions, for the sole purpose of implementing, constructing, servicing and maintaining approved coastal zone management and/or restoration projects. Utilization of any and all rights derived under this lease by the mineral lessee, its agents, successors or assigns, shall not interfere with nor hinder the reasonable surface use by the Department of Natural Resources, its Offices or Commissions, as herein above reserved.

Applicant: Robert A. Schroeder, Inc.

Bidder	Cash Payment	Price / Acre	Rental	Oil	Gas	Other

**BLOCK 60
CHANDELEUR SOUND
AREA**

P.O.B.
(S.W. COR. BLOCK 28)
X = 2,782,850.00
Y = 381,330.00

**BLOCK 28
CHANDELEUR AREA**

X = 2,782,850.00
Y = 388,705.00

L2 X = 2,795,874.15
Y = 388,705.00

X = 2,795,394.00
Y = 387,889.00

X = 2,795,311.00
Y = 387,750.00

STATE OF LOUISIANA
FEDERAL OFFSHORE WATERS

X = 2,793,560.00
Y = 384,834.00

X = 2,792,249.00
Y = 382,934.00

MAIN PASS AREA,

REVISED

BLOCK 6

SL 17028

BLOCK 91

SL
17328

TR 34833
1,817.61 ± ACS.
SEPT., 2002

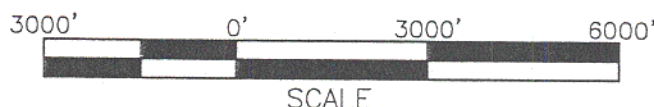
GULF OF MEXICO

CURVE No.	DELTA	RADIUS	ARC LENGTH	TANGENT	CHORD
1	00°30'31"	18240.60	161.90	80.95	161.90 S30°50'33"W
2	7°15'21"	18240.60	2309.95	1156.52	2308.40 S34°36'20"W

LINE No.	BEARING	DISTANCE (in feet)
1	N00°00'00"E	7375.00
2	N90°00'00"E	13024.15
3	S30°28'24"W	946.78
4	S30°59'02"W	3401.33
5	S38°14'21"W	2042.18
6	S90°00'00"W	8135.00

**BLOCK 28; CHANDELEUR AREA
ST. BERNARD PARISH, LOUISIANA**
SCALE 1" = 3000'

ALL COORDINATES, BEARINGS AND DISTANCES ARE GRID, AND ARE ON THE LOUISIANA LAMBERT PLANE COORDINATE SYSTEM, SOUTH ZONE, 1927 NORTH AMERICAN DATUM.



SCALE

TRACT 34834 - Portion of Block 91, Main Pass Area, Revised, St. Bernard Parish, Louisiana

That portion of Block 91, Main Pass Area, Revised, St. Bernard Parish, Louisiana, belonging to the State of Louisiana and not presently under mineral lease on September 11, 2002, being more fully described as follows: Beginning at a point having Coordinates of X = 2,782,850.00 and Y = 381,330.00, said point also being the Northwest corner of Block 91, Main Pass Area, Revised; thence East 8,135.00 feet on and along the North line of said Block 91, Main Pass Area, Revised, to a point having Coordinates of X = 2,790,985.00 and Y = 381,330.00; thence South 38 degrees 14 minutes 21 seconds West 276.28 feet to a point having Coordinates of X = 2,790,814.00 and Y = 381,113.00; thence Southwesterly 2,187.82 feet on a non-tangent curve to the right having a radius of 18,240.60 feet to a point having Coordinates of X = 2,789,360.00 and Y = 379,480.00; thence Southwesterly 1,741.58 feet on a non-tangent curve to the right having a radius of 18,240.60 feet to a point having Coordinates of X = 2,788,262.00 and Y = 378,129.00; thence South 28 degrees 59 minutes 35 seconds West 3,525.87 feet to a point having Coordinates of X = 2,786,553.00 and Y = 375,045.00; thence Southwesterly 2,748.70 feet on a non-tangent curve to the right having a radius of 18,240.60 feet to a point having Coordinates of X = 2,785,045.00 and Y = 372,750.00; thence South 37 degrees 37 minutes 29 seconds West 1,806.76 feet to a point having Coordinates of X = 2,783,942.00 and Y = 371,319.00; thence South 30 degrees 16 minutes 13 seconds West 297.57 feet to a point having Coordinates of X = 2,783,792.00 and Y = 371,062.00; thence Southwesterly 1,732.82 feet on a non-tangent curve to the right having a radius of 18,240.60 feet to a point having Coordinates of X = 2,782,850.00 and Y = 369,608.37, said point also being on the West line of said Block 91, Main Pass Area, Revised; thence North 11,721.63 feet on and along said West line of said Block 91, Main Pass Area, Revised, to the point of beginning, containing approximately **1,054.40 acres**, all as more particularly outlined on a plat on file in the Office of Mineral Resources, Department of Natural Resources, as provided by the applicant, **LESS AND EXCEPT** that portion thereof, if any, lying seaward of the line three nautical miles from the coast line of Louisiana, as said three mile line has been decreed by the Supreme Court of the United States, as determined by a Special Master appointed therein, in litigation styled **United States v. State of Louisiana et al No. 9 Original**, in 1975. All bearings, distances and coordinates are based on the Louisiana Coordinate System of 1927, (South Zone).

NOTE: The above description of the Tract nominated for lease has been provided and corrected, where required, exclusively by the nomination party. Any mineral lease selected from this Tract and awarded by the Louisiana State Mineral Board shall be without warranty of any kind, either express, implied, or statutory, including, but not limited to, the implied warranties of merchantability and fitness for a particular purpose. Should the mineral lease awarded by the Louisiana State Mineral Board be subsequently modified, cancelled or abrogated due to the existence of conflicting leases, operating agreements, private claims or other future obligations or conditions which may affect all or any portion

of the leased Tract, it shall not relieve the Lessee of the obligation to pay any bonus due thereon to the Louisiana State Mineral Board, not shall the Louisiana State Mineral Board be obligated to refund any consideration paid by the Lessor prior to such modification, cancellation, or abrogation, including, but not limited to, bonuses, rentals and royalties.

NOTE: The State of Louisiana does hereby reserve, and this lease shall be subject to, the imprescriptible right of surface use in the nature of a servitude in favor of the Department of Natural Resources, including its Offices and Commissions, for the sole purpose of implementing, constructing, servicing and maintaining approved coastal zone management and/or restoration projects. Utilization of any and all rights derived under this lease by the mineral lessee, its agents, successors or assigns, shall not interfere with nor hinder the reasonable surface use by the Department of Natural Resources, its Offices or Commissions, as herein above reserved.

Applicant: Robert A. Schroeder, Inc.

Bidder	Cash Payment	Price / Acre	Rental	Oil	Gas	Other

CURVE No.	DELTA	RADIUS	ARC LENGTH	TANGENT	CHORD
1	6° 52' 20"	18240.60	2187.92	1095.22	2186.51 S41° 40' 53" W
2	5° 28' 14"	18240.60	1741.58	871.45	1740.92 S39° 06' 07" W
3	8° 38' 02"	18240.60	2748.70	1376.96	2746.10 S33° 18' 29" W
4	5° 26' 35"	18240.60	1732.82	867.06	1732.17 S32° 56' 40" W

BLOCK 60 CHANDELEUR SOUND AREA

BLOCK 28 CHANDELEUR AREA

X = 2,790,985.00
Y = 381,330.00
X = 2,790,814.00
Y = 381,113.00

MAIN PASS AREA,

BLOCK 6

P.O.B.

(N.W. COR. BLOCK 91)
X = 2,782,850.00
Y = 381,330.00

SL 16262

SL 17028

GULF OF MEXICO

X = 2,783,942
Y = 371,319

X = 2,783,792
Y = 371,062
SL 17328

X = 2,782,850.00
Y = 369,608.37

SL 3771

REVISED

X = 2,789,360.00
Y = 379,480.00

X = 2,788,262.00
Y = 378,129.00

X = 2,786,553
Y = 375,045

X = 2,785,045
Y = 372,750

TR 34834
1,054.40 ± ACS.
SEPT., 2002

BLOCK 91

LINE No.	BEARING	DISTANCE (in feet)
1	N90° 00' 00" E	8135.00
2	S38° 14' 21" W	276.28
3	S28° 59' 35" W	3525.87
4	S37° 37' 29" W	1806.76
5	S30° 16' 13" W	297.57
6	N00° 00' 00" E	11,721.63

BLOCK 91; MAIN PASS AREA, REVISED ST. BERNARD PARISH, LOUISIANA

SCALE 1" = 3000'

ALL COORDINATES, BEARINGS AND DISTANCES ARE GRID, AND ARE ON THE LOUISIANA LAMBERT PLANE COORDINATE SYSTEM, SOUTH ZONE, 1927 NORTH AMERICAN DATUM.

