

TRACT 34931 - Portion of Block 67, Chandeleur Sound Area, St. Bernard Parish, Louisiana

All of the lands now or formerly constituting the beds and bottoms of all water bodies of every nature and description, and all islands and other lands formed by accretion, where allowed by law, or by reliction, and excepting tax adjudicated lands, belonging to the State of Louisiana and not presently under mineral lease on September 11, 2002, situated in St. Bernard Parish, Louisiana, and more particularly described as follows Beginning at a point on the East line of Block 67, Chandeleur Sound Area, having Coordinates of X = 2,679,600.00 and Y = 388,705.00; thence West 13,450.00 feet to a point on the East line of State Lease No. 17123 having Coordinates of X = 2,666,150.00 and Y = 388,705.00; thence along the boundary of said State Lease No. 17123 the following courses: North 2,825.00 feet and West 1,300.00 feet to the Northwest corner of said State Lease No. 17123, also being a point on the West line of said Block 67 having Coordinates of X = 2,664,850.00 and Y = 391,530.00; thence North 4,550.00 feet along the West line of said Block 67 to its Northwest corner having Coordinates of X = 2,664,850.00 and Y = 396,080.00; thence East 14,750.00 feet along the North line of said Block 67 to its Northeast corner having Coordinates of X = 2,679,600.00 and Y = 396,080.00; thence South 7,375.00 feet along the East line of said Block 67 to the point of beginning, containing approximately **2,412.96 acres**, all as more particularly outlined on a plat on file in the Office of Mineral Resources, Department of Natural Resources, as provided by the applicant. All bearings, distances and coordinates are based on Louisiana Coordinate System of 1927, (North or South Zone), where applicable.

NOTE: The above description of the Tract nominated for lease has been provided and corrected, where required, exclusively by the nomination party. Any mineral lease selected from this Tract and awarded by the Louisiana State Mineral Board shall be without warranty of any kind, either express, implied, or statutory, including, but not limited to, the implied warranties of merchantability and fitness for a particular purpose. Should the mineral lease awarded by the Louisiana State Mineral Board be subsequently modified, cancelled or abrogated due to the existence of conflicting leases, operating agreements, private claims or other future obligations or conditions which may affect all or any portion of the leased Tract, it shall not relieve the Lessee of the obligation to pay any bonus due thereon to the Louisiana State Mineral Board, nor shall the Louisiana State Mineral Board be obligated to refund any consideration paid by the Lessor prior to such modification, cancellation, or abrogation, including, but not limited to, bonuses, rentals and royalties.

NOTE: The Office of Mineral Resources will require a minimum bonus of 190 per acre and a minimum royalty of 22%.

NOTE: The State of Louisiana does hereby reserve, and this lease shall be subject to, the imprescriptible right of surface use in the nature of a servitude in favor of the Department of Natural Resources, including its Offices and Commissions, for the sole purpose of implementing,

constructing, servicing and maintaining approved coastal zone management and/or restoration projects. Utilization of any and all rights derived under this lease by the mineral lessee, its agents, successors or assigns, shall not interfere with nor hinder the reasonable surface use by the Department of Natural Resources, its Offices or Commissions, as herein above reserved.

Applicant: Palmer & Palmer

Bidder	Cash Payment	Price / Acre	Rental	Oil	Gas	Other

BIK. 51

BIK. 52

BIK. 53

SL
2459,
As
Amended

TR 34931
2,412.96 ± ACS.
SEPT., 2002

BIK. 68

BIK. 67

BIK. 66

SL 17123

P.O.B.
X=2,679,600.00
Y= 388,705.00

SL 17122

SL 17407 - CHANDELEUR SOUND AREA

TRACT 34932 - Portion of Block 67, Chandeleur Sound Area, St. Bernard Parish, Louisiana

All of the lands now or formerly constituting the beds and bottoms of all water bodies of every nature and description, and all islands and other lands formed by accretion, where allowed by law, or by reliction, and excepting tax adjudicated lands, belonging to the State of Louisiana and not presently under mineral lease on September 11, 2002, situated in St. Bernard Parish, Louisiana, and more particularly described as follows: Beginning at a point on the East line of Block 67, Chandeleur Sound Area, having Coordinates of X = 2,679,600.00 and Y = 388,705.00; thence South 7,375.00 feet along the East line of said Block 67 to its Southeast corner having Coordinates of X = 2,679,600.00 and Y = 381,330.00; thence West 4,410.00 feet along the South line of said Block 67 to a point, also being the Southeast corner of State Lease No. 17408 having Coordinates of X = 2,675,190.00 and Y = 381,330.00; thence along the boundary of said State Lease No. 17408 the following courses: North 850.00 feet, West 2,965.00 feet and South 850.00 feet to the Southwest corner of said State Lease No. 17408, also being the most Southerly Southeast corner of State Lease No. 17407 having Coordinates of X = 2,672,225.00 and Y = 381,330.00; thence along the boundary of said State Lease No. 17407 the following courses: North 58 degrees 39 minutes 49 seconds West 1,634.42 feet, North 50 degrees 58 minutes 58 seconds West 4,606.43 feet and West 2,400.00 feet to the Northwest corner of said State Lease No. 17407, also being a point on the West line of said Block 67 having Coordinates of X = 2,664,850.00 and Y = 385,080.00; thence North 1,050.00 feet along the West line of said Block 67 to a point, also being the Southwest corner of State Lease No. 17123 having Coordinates of X = 2,664,850.00 and Y = 386,130.00; thence along the boundary of said State Lease No. 17123 the following courses: East 1,300.00 feet and North 2,575.00 feet to a point on the East line of said State Lease No. 17123 having Coordinates of X = 2,666,150.00 and Y = 388,705.00; thence East 13,450.00 feet to the point of beginning, containing approximately **1,953.36 acres**, all as more particularly outlined on a plat on file in the Office of Mineral Resources, Department of Natural Resources, as provided by the applicant. All bearings, distances and coordinates are based on Louisiana Coordinate System of 1927, (North or South Zone), where applicable.

NOTE: The above description of the Tract nominated for lease has been provided and corrected, where required, exclusively by the nomination party. Any mineral lease selected from this Tract and awarded by the Louisiana State Mineral Board shall be without warranty of any kind, either express, implied, or statutory, including, but not limited to, the implied warranties of merchantability and fitness for a particular purpose. Should the mineral lease awarded by the Louisiana State Mineral Board be subsequently modified, cancelled or abrogated due to the existence of conflicting leases, operating agreements, private claims or other future obligations or conditions which may affect all or any portion of the leased Tract, it shall not relieve the Lessee of the obligation to pay any bonus due thereon to the Louisiana State Mineral Board, nor shall the Louisiana State Mineral Board be obligated to refund any consideration

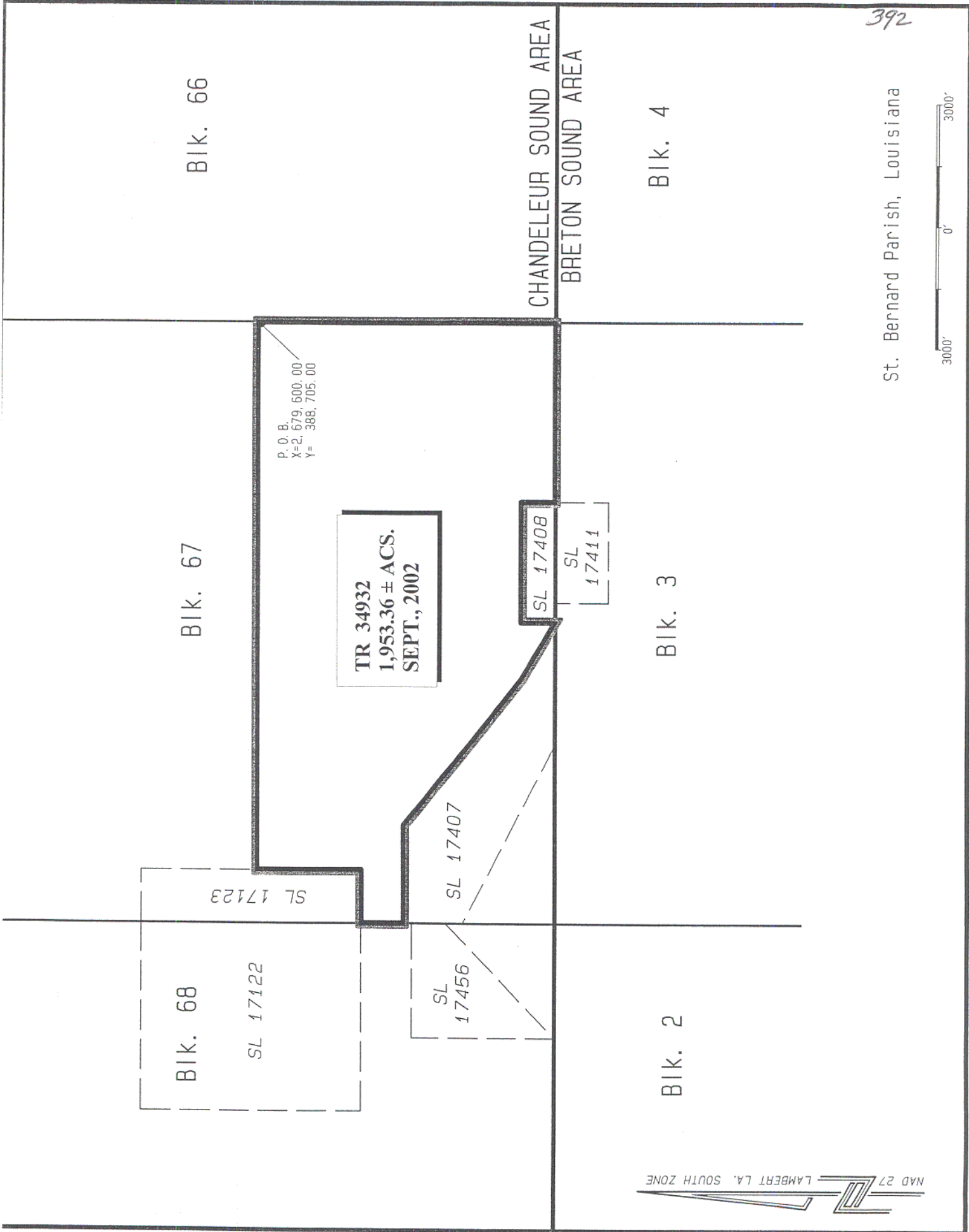
paid by the Lessor prior to such modification, cancellation, or abrogation, including, but not limited to, bonuses, rentals and royalties.

NOTE: The Office of Mineral Resources will require a minimum bonus of \$190 per acre and a minimum royalty of 22%.

NOTE: The State of Louisiana does hereby reserve, and this lease shall be subject to, the imprescriptible right of surface use in the nature of a servitude in favor of the Department of Natural Resources, including its Offices and Commissions, for the sole purpose of implementing, constructing, servicing and maintaining approved coastal zone management and/or restoration projects. Utilization of any and all rights derived under this lease by the mineral lessee, its agents, successors or assigns, shall not interfere with nor hinder the reasonable surface use by the Department of Natural Resources, its Offices or Commissions, as herein above reserved.

Applicant: Palmer & Palmer

Bidder	Cash Payment	Price / Acre	Rental	Oil	Gas	Other



BIK. 66

BIK. 67

BIK. 68

BIK. 4

BIK. 3

BIK. 2

CHANDELEUR SOUND AREA
BRETON SOUND AREA

P. O. B.
X=2,679,600.00
Y=-388,705.00

TR 34932
1,953.36 ± ACS.
SEPT., 2002

SL 17123

SL 17122

SL 17456

SL 17407

SL 17408

SL 17411

NAD 27 LAMBERT LA. SOUTH ZONE

392

St. Bernard Parish, Louisiana

3000' 0' 3000'

TRACT 34933 - Portion of Block 67, Chandeleur Sound Area, St. Bernard Parish, Louisiana

All of the lands now or formerly constituting the beds and bottoms of all water bodies of every nature and description, and all islands and other lands formed by accretion, where allowed by law, or by reliction, and excepting tax adjudicated lands, belonging to the State of Louisiana and not presently under mineral lease on September 11, 2002, situated in St. Bernard Parish, Louisiana, and more particularly described as follows: Beginning at the Southwest corner of Block 67, Chandeleur Sound Area, having Coordinates of X = 2,664,850.00 and Y = 381,330.00; thence North 2,310.00 feet along the West line of said Block 67 to a point, also being the most Northerly Southwest corner of State Lease No. 17407 having Coordinates of X = 2,664,850.00 and Y = 383,640.00; thence South 62 degrees 06 minutes 42 seconds East 4,938.55 feet along the boundary of said State Lease No. 17407 to its most Southerly Southwest corner, also being a point on the South line of said Block 67 having Coordinates of X = 2,669,215.00 and Y = 381,330.00; thence West 4,365.00 feet along the South line of said Block 67 to the point of beginning, containing approximately **115.74 acres**, all as more particularly outlined on a plat on file in the Office of Mineral Resources, Department of Natural Resources, as provided by the applicant. All bearings, distances and coordinates are based on Louisiana Coordinate System of 1927, (North or South Zone), where applicable.

NOTE: The above description of the Tract nominated for lease has been provided and corrected, where required, exclusively by the nomination party. Any mineral lease selected from this Tract and awarded by the Louisiana State Mineral Board shall be without warranty of any kind, either express, implied, or statutory, including, but not limited to, the implied warranties of merchantability and fitness for a particular purpose. Should the mineral lease awarded by the Louisiana State Mineral Board be subsequently modified, cancelled or abrogated due to the existence of conflicting leases, operating agreements, private claims or other future obligations or conditions which may affect all or any portion of the leased Tract, it shall not relieve the Lessee of the obligation to pay any bonus due thereon to the Louisiana State Mineral Board, nor shall the Louisiana State Mineral Board be obligated to refund any consideration paid by the Lessor prior to such modification, cancellation, or abrogation, including, but not limited to, bonuses, rentals and royalties.

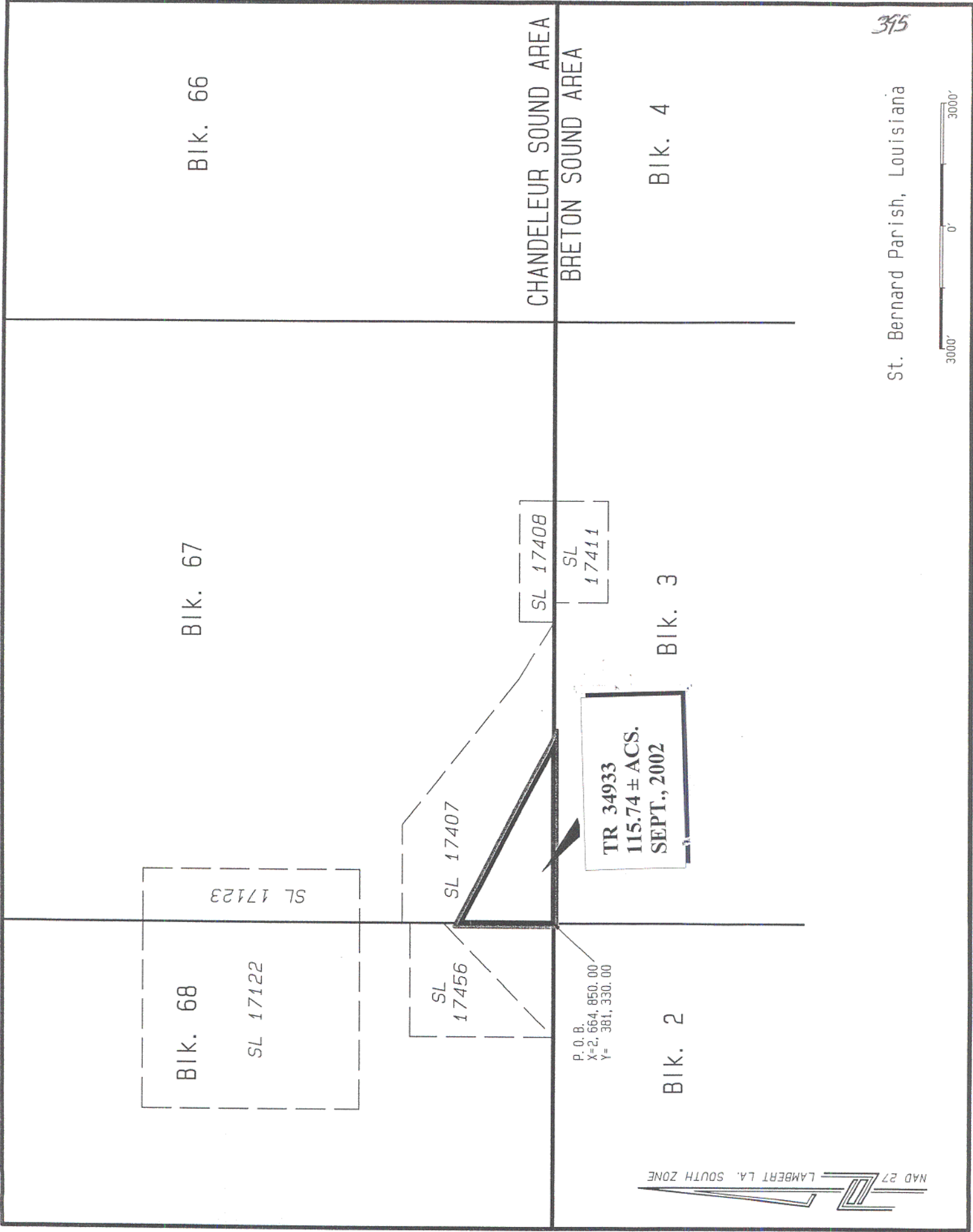
NOTE: The Office of Mineral Resources will require a minimum bonus of \$190 per acre and a minimum royalty of 22%.

NOTE: The State of Louisiana does hereby reserve, and this lease shall be subject to, the imprescriptible right of surface use in the nature of a servitude in favor of the Department of Natural Resources, including its Offices and Commissions, for the sole purpose of implementing, constructing, servicing and maintaining approved coastal zone management and/or restoration projects. Utilization of any and all rights derived under this lease by the mineral lessee, its agents, successors or assigns,

shall not interfere with nor hinder the reasonable surface use by the Department of Natural Resources, its Offices or Commissions, as herein above reserved.

Applicant: Palmer & Palmer

Bidder	Cash Payment	Price / Acre	Rental	Oil	Gas	Other



BIK. 66

BIK. 67

BIK. 68

BIK. 4

BIK. 3

BIK. 2

CHANDELEUR SOUND AREA
BRETON SOUND AREA

SL 17123

SL 17122

SL 17456

SL 17407

SL 17408

SL 17411

P. O. B.
X=2,664,850.00
Y=381,330.00

TR 34933
115.74 ± ACS.
SEPT., 2002

TRACT 34934 - Portion of Block 3, Breton Sound Area, St. Bernard Parish, Louisiana

All of the lands now or formerly constituting the beds and bottoms of all water bodies of every nature and description, and all islands and other lands formed by accretion, where allowed by law, or by reliction, and excepting tax adjudicated lands, belonging to the State of Louisiana and not presently under mineral lease on September 11, 2002, situated in St. Bernard Parish, Louisiana, and more particularly described as follows: Beginning at a point on the West line of Block 3, Breton Sound Area, having Coordinates of X = 2,664,850.00 and Y = 373,955.00; thence North 7,375.00 feet along the West line of said Block 3 to its Northwest corner having Coordinates of X = 2,664,850.00 and Y = 381,330.00; thence East 7,850.00 feet along the North line of said Block to a point, also being the Northwest corner of State Lease No. 17411 having Coordinates of X = 2,672,700.00 and Y = 381,330.00; thence along the boundary of said State Lease No. 17411 the following courses: South 1,330.00 feet, East 2,490.00 feet and North 1,330.00 feet to the Northeast corner of said State Lease No. 17411, also being a point on the North line of said Block 3 having Coordinates of X = 2,675,190.00 and Y = 381,330.00; thence East 4,410.00 feet along the North line of said Block 3 to its Northeast corner having Coordinates of X = 2,679,600.00 and Y = 381,330.00; thence South 7,375.00 feet along the East line of said Block 3 to a point having Coordinates of X = 2,679,600.00 and Y = 373,955.00; thence West 14,750.00 feet to the point of beginning, containing approximately **2,421.25 acres**, all as more particularly outlined on a plat on file in the Office of Mineral Resources, Department of Natural Resources, as provided by the applicant. All bearings, distances and coordinates are based on Louisiana Coordinate System of 1927, (North or South Zone), where applicable.

NOTE: The above description of the Tract nominated for lease has been provided and corrected, where required, exclusively by the nomination party. Any mineral lease selected from this Tract and awarded by the Louisiana State Mineral Board shall be without warranty of any kind, either express, implied, or statutory, including, but not limited to, the implied warranties of merchantability and fitness for a particular purpose. Should the mineral lease awarded by the Louisiana State Mineral Board be subsequently modified, cancelled or abrogated due to the existence of conflicting leases, operating agreements, private claims or other future obligations or conditions which may affect all or any portion of the leased Tract, it shall not relieve the Lessee of the obligation to pay any bonus due thereon to the Louisiana State Mineral Board, nor shall the Louisiana State Mineral Board be obligated to refund any consideration paid by the Lessor prior to such modification, cancellation, or abrogation, including, but not limited to, bonuses, rentals and royalties.

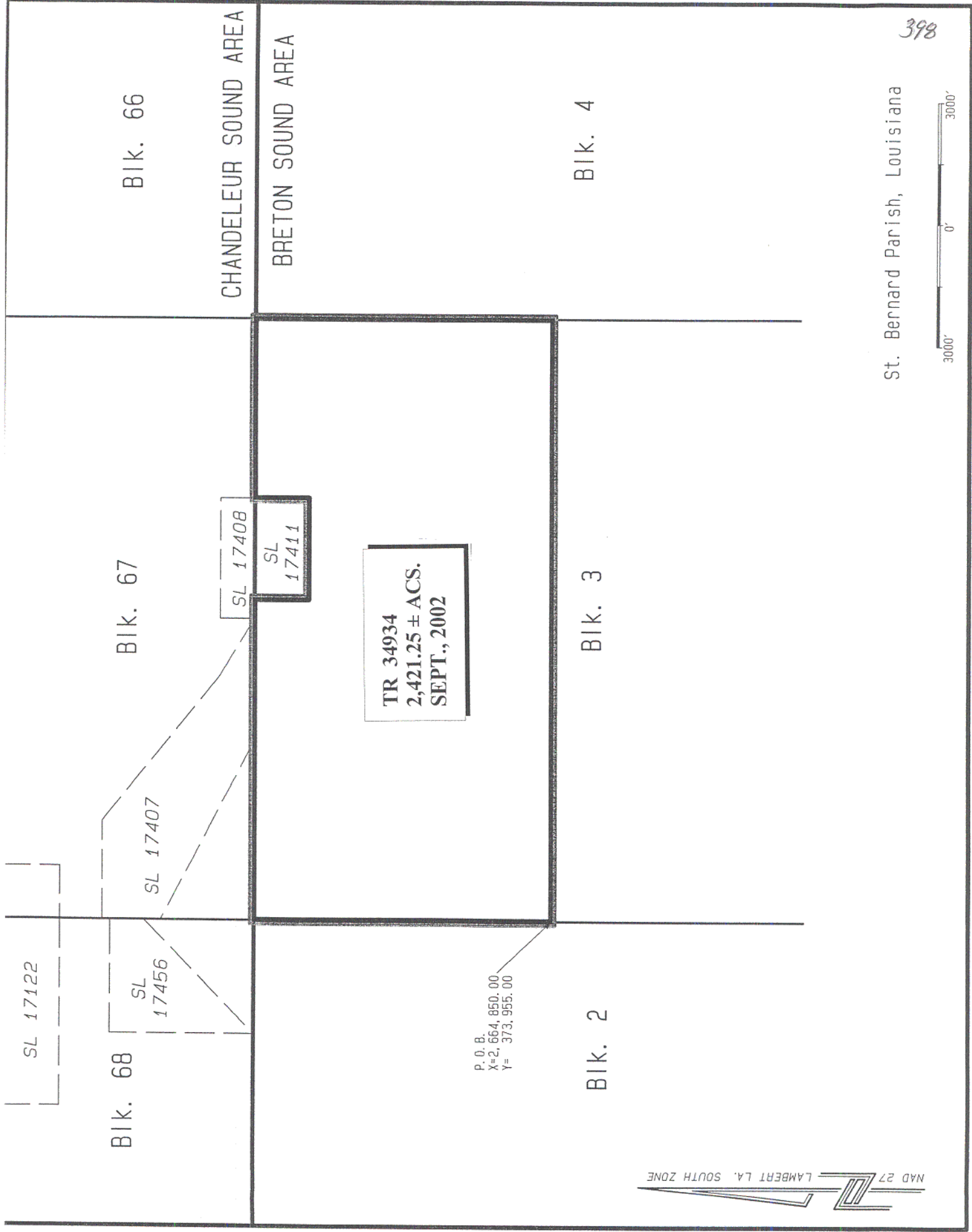
NOTE: The Office of Mineral Resources will require a minimum bonus of \$190 per acre and a minimum royalty of 22%.

NOTE: The State of Louisiana does hereby reserve, and this lease shall be subject to, the imprescriptible right of surface use in the nature of a

servitude in favor of the Department of Natural Resources, including its Offices and Commissions, for the sole purpose of implementing, constructing, servicing and maintaining approved coastal zone management and/or restoration projects. Utilization of any and all rights derived under this lease by the mineral lessee, its agents, successors or assigns, shall not interfere with nor hinder the reasonable surface use by the Department of Natural Resources, its Offices or Commissions, as herein above reserved.

Applicant: Palmer & Palmer

Bidder	Cash Payment	Price / Acre	Rental	Oil	Gas	Other



398

St. Bernard Parish, Louisiana



TR 34934
2,421.25 ± ACS.
SEPT., 2002

P.O.B.
X=2,664,850.00
Y=373,955.00

NAD 27 LAMBERT LA. SOUTH ZONE

TRACT 34935 - Portion of Block 3, Breton Sound Area, St. Bernard Parish, Louisiana

All of the lands now or formerly constituting the beds and bottoms of all water bodies of every nature and description, and all islands and other lands formed by accretion, where allowed by law, or by reliction, and excepting tax adjudicated lands, belonging to the State of Louisiana and not presently under mineral lease on September 11, 2002, situated in St. Bernard Parish, Louisiana, and more particularly described as follows: Beginning at a point on the West line of Block 3, Breton Sound Area, having Coordinates of X = 2,664,850.00 and Y = 373,955.00; thence East 14,750.00 feet to a point on the East line of said Block 3 having Coordinates of X = 2,679,600.00 and Y = 373,955.00; thence South 7,375.00 feet along the East line of said Block 3 to its Southeast corner having Coordinates of X = 2,679,600.00 and Y = 366,580.00; thence West 14,750.00 feet along the South line of said Block 3 to its Southwest corner having Coordinates of X = 2,664,850.00 and Y = 366,580.00; thence North 7,375.00 feet along the West line of said Block 3 to the point of beginning, containing approximately **2,497.27 acres**, all as more particularly outlined on a plat on file in the Office of Mineral Resources, Department of Natural Resources, as provided by Applicant. All bearings, distances and coordinates are based on Louisiana Coordinate System of 1927, (North or South Zone), where applicable.

NOTE: The above description of the Tract nominated for lease has been provided and corrected, where required, exclusively by the nomination party. Any mineral lease selected from this Tract and awarded by the Louisiana State Mineral Board shall be without warranty of any kind, either express, implied, or statutory, including, but not limited to, the implied warranties of merchantability and fitness for a particular purpose. Should the mineral lease awarded by the Louisiana State Mineral Board be subsequently modified, cancelled or abrogated due to the existence of conflicting leases, operating agreements, private claims or other future obligations or conditions which may affect all or any portion of the leased Tract, it shall not relieve the Lessee of the obligation to pay any bonus due thereon to the Louisiana State Mineral Board, nor shall the Louisiana State Mineral Board be obligated to refund any consideration paid by the Lessor prior to such modification, cancellation, or abrogation, including, but not limited to, bonuses, rentals and royalties.

NOTE: The Office of Mineral Resources will require a minimum bonus of \$190 per acre and a minimum royalty of 22%.

NOTE: The State of Louisiana does hereby reserve, and this lease shall be subject to, the imprescriptible right of surface use in the nature of a servitude in favor of the Department of Natural Resources, including its Offices and Commissions, for the sole purpose of implementing, constructing, servicing and maintaining approved coastal zone management and/or restoration projects. Utilization of any and all rights derived under this lease by the mineral lessee, its agents, successors or assigns, shall not interfere with nor hinder the reasonable surface use by the

Department of Natural Resources, its Offices or Commissions, as herein above reserved.

Applicant: Palmer & Palmer

Bidder	Cash Payment	Price / Acre	Rental	Oil	Gas	Other

P. O. B.
X=2,664,850.00
Y= 373,955.00

BIK. 2

BIK. 3

TR 34935
2,497.27 ± ACS.
SEPT., 2002

BIK. 4

BIK. 15

BIK. 14

BRETON SOUND AREA

BIK. 13

401



St. Bernard Parish, Louisiana



TRACT 34936 - Portion of Block 53, Chandeleur Sound Area, St. Bernard Parish, Louisiana

All of the lands now or formerly constituting the beds and bottoms of all water bodies of every nature and description, and all islands and other lands formed by accretion, where allowed by law, or by reliction, and excepting tax adjudicated lands, belonging to the State of Louisiana and not presently under mineral lease on September 11, 2002, situated in St. Bernard Parish, Louisiana, and more particularly described as follows: Beginning at a point being the Northeast corner of Block 53, Chandeleur Sound Area, having Coordinates of X = 2,694,350.00 and Y = 410,830.00; thence South 7,375.00 feet to a point having Coordinates of X = 2,694,350.00 and Y = 403,455.00; thence West 14,750.00 feet to a point having Coordinates of X = 2,679,600.00 and Y = 403,455.00; thence North 7,375.00 feet to the Northwest corner of Block 53 having Coordinates of X = 2,679,600.00 and Y = 410,830.00; thence East 14,750.00 feet to the point of beginning, containing approximately **2,497.27 acres**, all as more particularly outlined on a plat on file in the Office of Mineral Resources, Department of Natural Resources, as provided by the applicant. All bearings, distances and coordinates are based on Louisiana Coordinate System of 1927, (North or South Zone), where applicable.

NOTE: The above description of the Tract nominated for lease has been provided and corrected, where required, exclusively by the nomination party. Any mineral lease selected from this Tract and awarded by the Louisiana State Mineral Board shall be without warranty of any kind, either express, implied, or statutory, including, but not limited to, the implied warranties of merchantability and fitness for a particular purpose. Should the mineral lease awarded by the Louisiana State Mineral Board be subsequently modified, cancelled or abrogated due to the existence of conflicting leases, operating agreements, private claims or other future obligations or conditions which may affect all or any portion of the leased Tract, it shall not relieve the Lessee of the obligation to pay any bonus due thereon to the Louisiana State Mineral Board, nor shall the Louisiana State Mineral Board be obligated to refund any consideration paid by the Lessor prior to such modification, cancellation, or abrogation, including, but not limited to, bonuses, rentals and royalties.

NOTE: The Office of Mineral Resources will require a minimum bonus of \$190 per acre and a minimum bonus of 22%.

NOTE: The State of Louisiana does hereby reserve, and this lease shall be subject to, the imprescriptible right of surface use in the nature of a servitude in favor of the Department of Natural Resources, including its Offices and Commissions, for the sole purpose of implementing, constructing, servicing and maintaining approved coastal zone management and/or restoration projects. Utilization of any and all rights derived under this lease by the mineral lessee, its agents, successors or assigns, shall not interfere with nor hinder the reasonable surface use by the Department of Natural Resources, its Offices or Commissions, as herein above reserved.

Applicant: Houston McNutt

Bidder	Cash Payment	Price / Acre	Rental	Oil	Gas	Other



464

041

CS0040

CS

X = 2,679,600.00
Y = 410,830.00

P.O.B.
X = 2,694,350.00
Y = 410,830.00

TR 34936
2,497.27 ± ACS.
SEPT., 2002

052

CS0053

CS

X = 2,679,600.00
Y = 403,455.00

X = 2,694,350.00
Y = 403,455.00

CHANDELEUR SOUND AREA
ST. BERNARD PARISH, LOUISIANA

SCALE: 1" = 4000'

TRACT 34937 - Portion of Block 53, Chandeleur Sound Area, St. Bernard Parish, Louisiana

All of the lands now or formerly constituting the beds and bottoms of all water bodies of every nature and description, and all islands and other lands formed by accretion, where allowed by law, or by reliction, and excepting tax adjudicated lands, belonging to the State of Louisiana and not presently under mineral lease on September 11, 2002, situated in St. Bernard Parish, Louisiana, and more particularly described as follows: Beginning at a point being the Southeast corner of Block 53, Chandeleur Sound Area, having Coordinates of X = 2,694,350.00 and Y = 396,080.00; thence West 14,750.00 feet to the Southwest corner of Block 53 to a point having Coordinates of X = 2,679,600.00 and Y = 396,080.00; thence North 7,375.00 feet to a point having Coordinates of X = 2,679,600.00 and Y = 403,455.00; thence East 14,750.00 feet to a point having Coordinates of X = 2,694,350.00 and Y = 403,455.00; thence South 7,375.00 feet to the point of beginning, containing approximately **2,497.27 acres**, all as more particularly outlined on a plat on file in the Office of Mineral Resources, Department of Natural Resources, as provided by the applicant. All bearings, distances and coordinates are based on Louisiana Coordinate System of 1927, (North or South Zone), where applicable.

NOTE: The above description of the Tract nominated for lease has been provided and corrected, where required, exclusively by the nomination party. Any mineral lease selected from this Tract and awarded by the Louisiana State Mineral Board shall be without warranty of any kind, either express, implied, or statutory, including, but not limited to, the implied warranties of merchantability and fitness for a particular purpose. Should the mineral lease awarded by the Louisiana State Mineral Board be subsequently modified, cancelled or abrogated due to the existence of conflicting leases, operating agreements, private claims or other future obligations or conditions which may affect all or any portion of the leased Tract, it shall not relieve the Lessee of the obligation to pay any bonus due thereon to the Louisiana State Mineral Board, nor shall the Louisiana State Mineral Board be obligated to refund any consideration paid by the Lessor prior to such modification, cancellation, or abrogation, including, but not limited to, bonuses, rentals and royalties.

NOTE: The Office of Mineral Resources will require a minimum bonus of \$190 per acre and a minimum bonus of 22%.

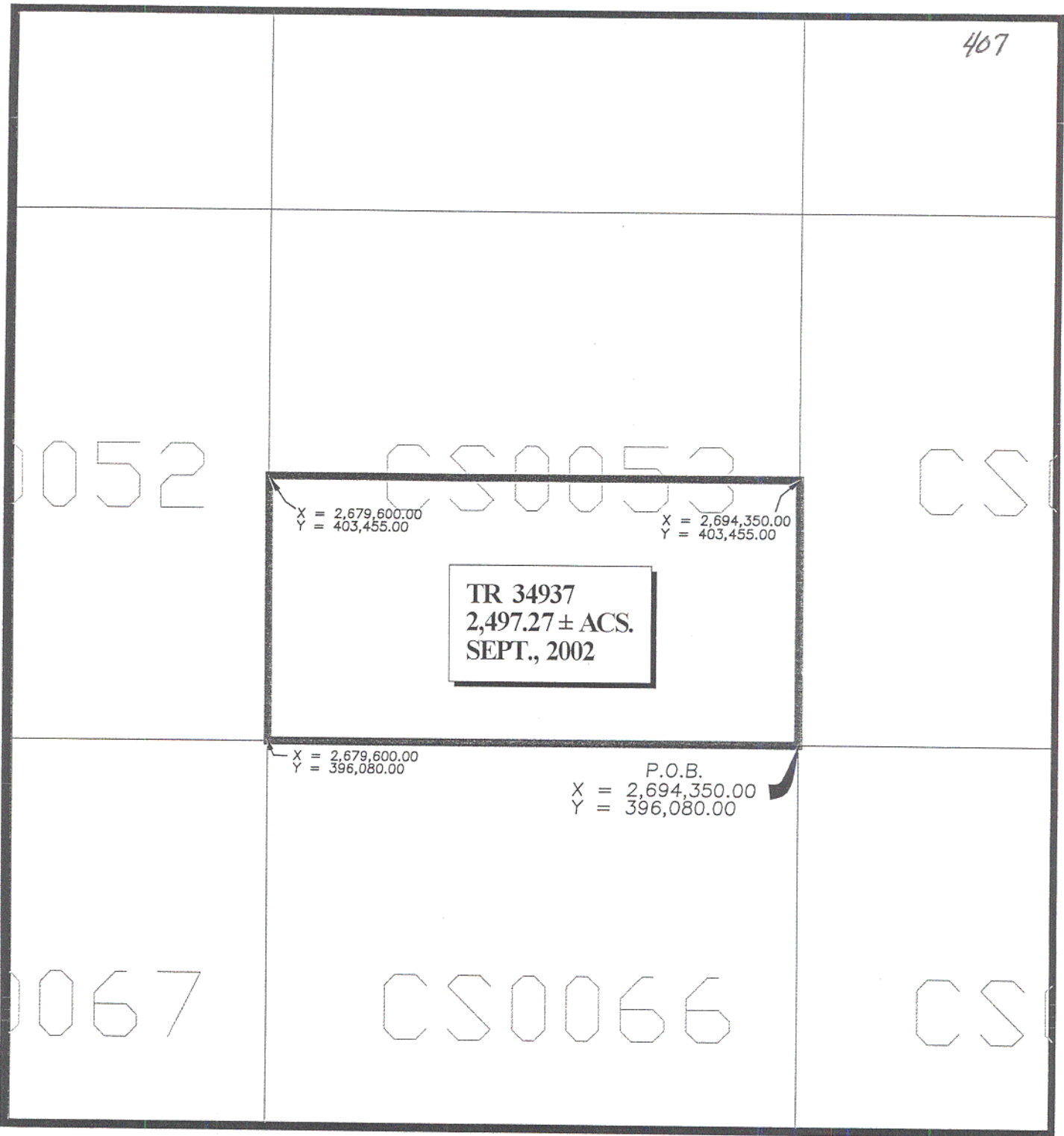
NOTE: The State of Louisiana does hereby reserve, and this lease shall be subject to, the imprescriptible right of surface use in the nature of a servitude in favor of the Department of Natural Resources, including its Offices and Commissions, for the sole purpose of implementing, constructing, servicing and maintaining approved coastal zone management and/or restoration projects. Utilization of any and all rights derived under this lease by the mineral lessee, its agents, successors or assigns, shall not interfere with nor hinder the reasonable surface use by the Department of Natural Resources, its Offices or Commissions, as herein above reserved.

Applicant: Houston McNutt

Bidder	Cash Payment	Price / Acre	Rental	Oil	Gas	Other



407



TR 34937
2,497.27 ± ACS.
SEPT., 2002

X = 2,679,600.00
Y = 403,455.00

X = 2,694,350.00
Y = 403,455.00

X = 2,679,600.00
Y = 396,080.00

P.O.B.
X = 2,694,350.00
Y = 396,080.00

CHANDELEUR SOUND AREA
ST. BERNARD PARISH, LOUISIANA

SCALE: 1" = 400'

TRACT 34938 - Portion of Block 66, Chandeleur Sound Area, St. Bernard Parish, Louisiana

All of the lands now or formerly constituting the beds and bottoms of all water bodies of every nature and description, and all islands and other lands formed by accretion, where allowed by law, or by reliction, and excepting tax adjudicated lands, belonging to the State of Louisiana and not presently under mineral lease on September 11, 2002, situated in St. Bernard Parish, Louisiana, and more particularly described as follows: Beginning at a point being the Northeast corner of Block 66, Chandeleur Sound Area, having Coordinates of X = 2,694,350.00 and Y = 396,080.00; thence South 7,375.00 feet to a point having Coordinates of X = 2,694,350.00 and Y = 388,705.00; thence West 14,750.00 feet to a point having Coordinates of X = 2,679,600.00 and Y = 388,705.00; thence North 7,375.00 feet to the Northwest corner of Block 66 having Coordinates of X = 2,679,600.00 and Y = 396,080.00; thence East 14,750.00 feet to the point of beginning, containing approximately **2,497.27 acres**, all as more particularly outlined on a plat on file in the Office of Mineral Resources, Department of Natural Resources, as provided by the applicant. All bearings, distances and coordinates are based on Louisiana Coordinate System of 1927, (North or South Zone), where applicable.

NOTE: The above description of the Tract nominated for lease has been provided and corrected, where required, exclusively by the nomination party. Any mineral lease selected from this Tract and awarded by the Louisiana State Mineral Board shall be without warranty of any kind, either express, implied, or statutory, including, but not limited to, the implied warranties of merchantability and fitness for a particular purpose. Should the mineral lease awarded by the Louisiana State Mineral Board be subsequently modified, cancelled or abrogated due to the existence of conflicting leases, operating agreements, private claims or other future obligations or conditions which may affect all or any portion of the leased Tract, it shall not relieve the Lessee of the obligation to pay any bonus due thereon to the Louisiana State Mineral Board, nor shall the Louisiana State Mineral Board be obligated to refund any consideration paid by the Lessor prior to such modification, cancellation, or abrogation, including, but not limited to, bonuses, rentals and royalties.

NOTE: The Office of Mineral Resources will require a minimum bonus of \$190 per acre and a minimum royalty of 22%.

NOTE: The State of Louisiana does hereby reserve, and this lease shall be subject to, the imprescriptible right of surface use in the nature of a servitude in favor of the Department of Natural Resources, including its Offices and Commissions, for the sole purpose of implementing, constructing, servicing and maintaining approved coastal zone management and/or restoration projects. Utilization of any and all rights derived under this lease by the mineral lessee, its agents, successors or assigns, shall not interfere with nor hinder the reasonable surface use by the Department of Natural Resources, its Offices or Commissions, as herein above reserved.

Applicant: Houston McNutt

Bidder	Cash Payment	Price / Acre	Rental	Oil	Gas	Other



410

052

CS0053

CS

X = 2,679,600.00
Y = 396,080.00

P.O.B.
X = 2,694,350.00
Y = 396,080.00

TR 34938
2,497.27 ± ACS.
SEPT., 2002

067

CS0066

CS

X = 2,679,600.00
Y = 388,705.00

X = 2,694,350.00
Y = 388,705.00

L 17408

CHANDELEUR SOUND AREA
ST. BERNARD PARISH, LOUISIANA

SCALE: 1" = 4000'

TRACT 34939 - Portion of Block 66, Chandeleur Sound Area, St. Bernard Parish, Louisiana

All of the lands now or formerly constituting the beds and bottoms of all water bodies of every nature and description, and all islands and other lands formed by accretion, where allowed by law, or by reliction, and excepting tax adjudicated lands, belonging to the State of Louisiana and not presently under mineral lease on September 11, 2002, situated in St. Bernard Parish, Louisiana, and more particularly described as follows: Beginning at a point being the Southeast corner of Block 66, Chandeleur Sound Area, having Coordinates of X = 2,694,350.00 and Y = 381,330.00; thence West 14,750.00 feet to the Southwest corner of Block 66 to a point having Coordinates of X = 2,679,600.00 and Y = 381,330.00; thence North 7,375.00 feet to a point having Coordinates of X = 2,679,600.00 and Y = 388,705.00; thence East 14,750.00 feet to a point having Coordinates of X = 2,694,350.00 and Y = 388,705.00; thence South 7,375.00 feet to the point of beginning, containing approximately **2,497.27 acres**, all as more particularly outlined on a plat on file in the Office of Mineral Resources, Department of Natural Resources, as provided by the applicant. All bearings, distances and coordinates are based on Louisiana Coordinate System of 1927, (North or South Zone), where applicable.

NOTE: The above description of the Tract nominated for lease has been provided and corrected, where required, exclusively by the nomination party. Any mineral lease selected from this Tract and awarded by the Louisiana State Mineral Board shall be without warranty of any kind, either express, implied, or statutory, including, but not limited to, the implied warranties of merchantability and fitness for a particular purpose. Should the mineral lease awarded by the Louisiana State Mineral Board be subsequently modified, cancelled or abrogated due to the existence of conflicting leases, operating agreements, private claims or other future obligations or conditions which may affect all or any portion of the leased Tract, it shall not relieve the Lessee of the obligation to pay any bonus due thereon to the Louisiana State Mineral Board, nor shall the Louisiana State Mineral Board be obligated to refund any consideration paid by the Lessor prior to such modification, cancellation, or abrogation, including, but not limited to, bonuses, rentals and royalties.

NOTE: The Office of Mineral Resources will require a minimum bonus of \$190 per acre and a minimum royalty of 22%.

NOTE: The State of Louisiana does hereby reserve, and this lease shall be subject to, the imprescriptible right of surface use in the nature of a servitude in favor of the Department of Natural Resources, including its Offices and Commissions, for the sole purpose of implementing, constructing, servicing and maintaining approved coastal zone management and/or restoration projects. Utilization of any and all rights derived under this lease by the mineral lessee, its agents, successors or assigns, shall not interfere with nor hinder the reasonable surface use by the Department of Natural Resources, its Offices or Commissions, as herein above reserved.

Applicant: Houston McNutt

Bidder	Cash Payment	Price / Acre	Rental	Oil	Gas	Other



413

067

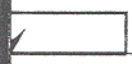
CS00066

CS0

X = 2,679,600.00
Y = 388,705.00

X = 2,694,350.00
Y = 388,705.00

TR 34939
2,497.27 ± ACS.
SEPT., 2002



17408

X = 2,679,600.00
Y = 381,330.00

P.O.B.
X = 2,694,350.00
Y = 381,330.00

003

BS00004

BS0

CHANDELEUR SOUND AREA
ST. BERNARD PARISH, LOUISIANA

SCALE: 1" = 4000'

TRACT 34940 - Portion of Block 54, Chandeleur Sound Area, St. Bernard Parish, Louisiana

All of the lands now or formerly constituting the beds and bottoms of all water bodies of every nature and description, and all islands and other lands formed by accretion, where allowed by law, or by reliction, and excepting tax adjudicated lands, belonging to the State of Louisiana and not presently under mineral lease on September 11, 2002, situated in St. Bernard Parish, Louisiana, and more particularly described as follows: Beginning at a point being the Northeast corner of Block 54, Chandeleur Sound Area, having Coordinates of X = 2,709,100.00 and Y = 410,830.00; thence South 7,375.00 feet to a point having Coordinates of X = 2,709,100.00 and Y = 403,455.00; thence West 14,750.00 feet to a point having Coordinates of X = 2,694,350.00 and Y = 403,455.00; thence North 7,375.00 feet to the Northwest corner of Block 54 having Coordinates of X = 2,694,350.00 and Y = 410,830.00; thence East 14,750.00 feet to the point of beginning, containing approximately **2,497.27 acres**, all as more particularly outlined on a plat on file in the Office of Mineral Resources, Department of Natural Resources, as provided by the applicant. All bearings, distances and coordinates are based on Louisiana Coordinate System of 1927, (North or South Zone), where applicable.

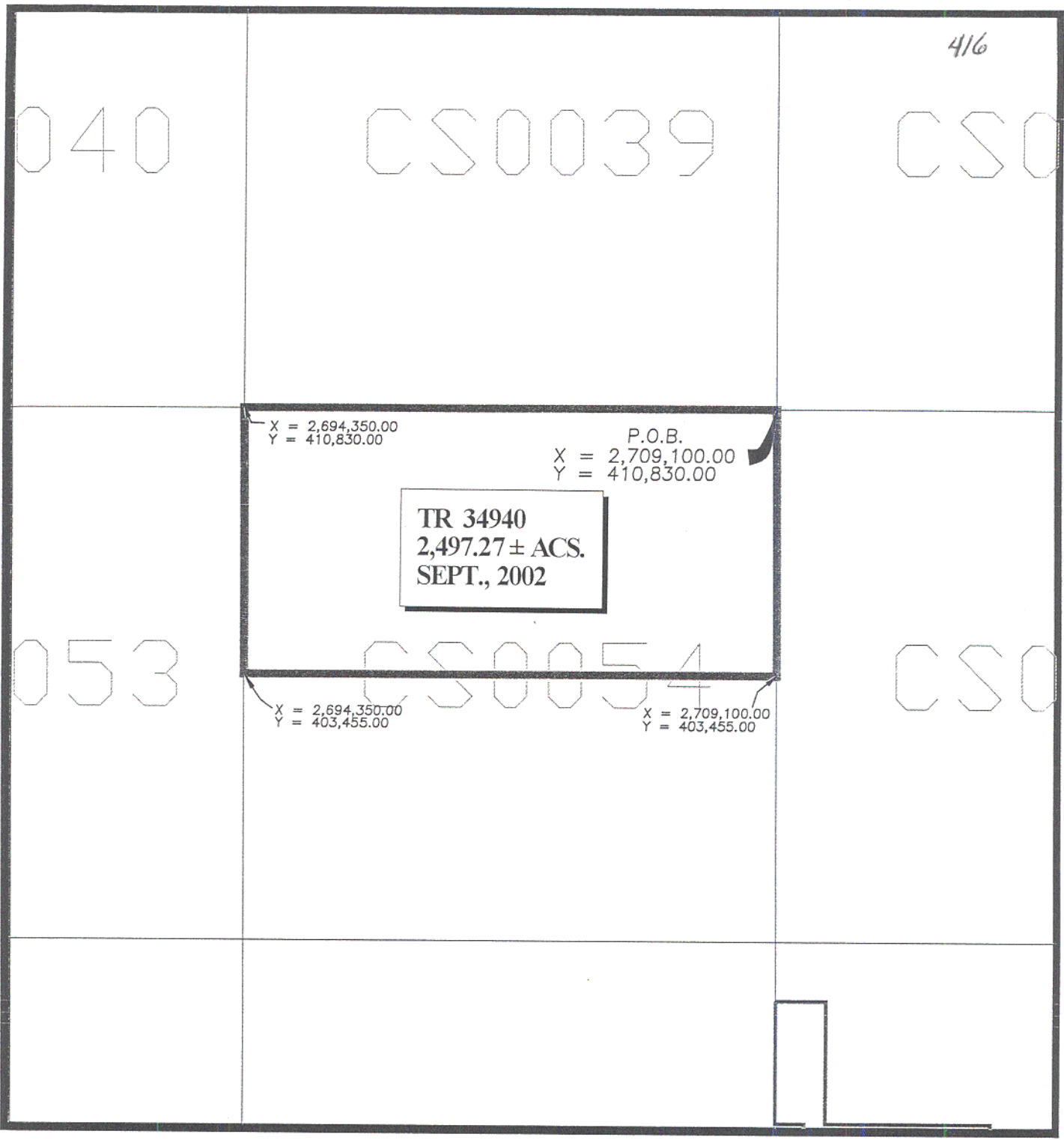
NOTE: The above description of the Tract nominated for lease has been provided and corrected, where required, exclusively by the nomination party. Any mineral lease selected from this Tract and awarded by the Louisiana State Mineral Board shall be without warranty of any kind, either express, implied, or statutory, including, but not limited to, the implied warranties of merchantability and fitness for a particular purpose. Should the mineral lease awarded by the Louisiana State Mineral Board be subsequently modified, cancelled or abrogated due to the existence of conflicting leases, operating agreements, private claims or other future obligations or conditions which may affect all or any portion of the leased Tract, it shall not relieve the Lessee of the obligation to pay any bonus due thereon to the Louisiana State Mineral Board, nor shall the Louisiana State Mineral Board be obligated to refund any consideration paid by the Lessor prior to such modification, cancellation, or abrogation, including, but not limited to, bonuses, rentals and royalties.

NOTE: The Office of Mineral Resources will require a minimum bonus of \$190 per acre and a minimum bonus of 22%.

NOTE: The State of Louisiana does hereby reserve, and this lease shall be subject to, the imprescriptible right of surface use in the nature of a servitude in favor of the Department of Natural Resources, including its Offices and Commissions, for the sole purpose of implementing, constructing, servicing and maintaining approved coastal zone management and/or restoration projects. Utilization of any and all rights derived under this lease by the mineral lessee, its agents, successors or assigns, shall not interfere with nor hinder the reasonable surface use by the Department of Natural Resources, its Offices or Commissions, as herein above reserved.

Applicant: Houston McNutt

Bidder	Cash Payment	Price / Acre	Rental	Oil	Gas	Other



CHANDELEUR SOUND AREA
ST. BERNARD PARISH, LOUISIANA

SCALE: 1" = 4000'

TRACT 34941 - Portion of Block 54, Chandeleur Sound Area, St. Bernard Parish, Louisiana

All of the lands now or formerly constituting the beds and bottoms of all water bodies of every nature and description, and all islands and other lands formed by accretion, where allowed by law, or by reliction, and excepting tax adjudicated lands, belonging to the State of Louisiana and not presently under mineral lease on September 11, 2002, situated in St. Bernard Parish, Louisiana, and more particularly described as follows: Beginning at a point being the Southeast corner of Block 54, Chandeleur Sound Area, having Coordinates of X = 2,709,100.00 and Y = 396,080.00; thence West 14,750.00 feet to the Southwest corner of Block 54 to a point having Coordinates of X = 2,694,350.00 and Y = 396,080.00; thence North 7,375.00 feet to a point having Coordinates of X = 2,694,350.00 and Y = 403,455.00; thence East 14,750.00 feet to a point having Coordinates of X = 2,709,100.00 and Y = 403,455.00; thence South 7,375.00 feet to the point of beginning, containing approximately **2,497.27 acres**, all as more particularly outlined on a plat on file in the Office of Mineral Resources, Department of Natural Resources, as provided by the applicant. All bearings, distances and coordinates are based on Louisiana Coordinate System of 1927, (North or South Zone), where applicable.

NOTE: The above description of the Tract nominated for lease has been provided and corrected, where required, exclusively by the nomination party. Any mineral lease selected from this Tract and awarded by the Louisiana State Mineral Board shall be without warranty of any kind, either express, implied, or statutory, including, but not limited to, the implied warranties of merchantability and fitness for a particular purpose. Should the mineral lease awarded by the Louisiana State Mineral Board be subsequently modified, cancelled or abrogated due to the existence of conflicting leases, operating agreements, private claims or other future obligations or conditions which may affect all or any portion of the leased Tract, it shall not relieve the Lessee of the obligation to pay any bonus due thereon to the Louisiana State Mineral Board, nor shall the Louisiana State Mineral Board be obligated to refund any consideration paid by the Lessor prior to such modification, cancellation, or abrogation, including, but not limited to, bonuses, rentals and royalties.

NOTE: The Office of Mineral Resources will require a minimum bonus of \$190 per acre and a minimum bonus of 22%.

NOTE: The State of Louisiana does hereby reserve, and this lease shall be subject to, the imprescriptible right of surface use in the nature of a servitude in favor of the Department of Natural Resources, including its Offices and Commissions, for the sole purpose of implementing, constructing, servicing and maintaining approved coastal zone management and/or restoration projects. Utilization of any and all rights derived under this lease by the mineral lessee, its agents, successors or assigns, shall not interfere with nor hinder the reasonable surface use by the Department of Natural Resources, its Offices or Commissions, as herein above reserved.

Applicant: Houston McNutt

Bidder	Cash Payment	Price / Acre	Rental	Oil	Gas	Other



419

053

CS0054

CS0

X = 2,694,350.00
Y = 403,455.00

X = 2,709,100.00
Y = 403,455.00

TR 34941
2,497.27 ± ACS.
SEPT., 2002

X = 2,694,350.00
Y = 396,080.00

P.O.B.
X = 2,709,100.00
Y = 396,080.00

066

CS0065

SL 17409

SL

CHANDELEUR SOUND AREA
ST. BERNARD PARISH, LOUISIANA

SCALE: 1" = 4000'

TRACT 34942 - Portion of Block 65, Chandeleur Sound Area, St. Bernard Parish, Louisiana

All of the lands now or formerly constituting the beds and bottoms of all water bodies of every nature and description, and all islands and other lands formed by accretion, where allowed by law, or by reliction, and excepting tax adjudicated lands, belonging to the State of Louisiana and not presently under mineral lease on September 11, 2002, situated in St. Bernard Parish, Louisiana, and more particularly described as follows: Beginning at a point being the Northeast corner of Block 65, Chandeleur Sound Area, having Coordinates of X = 2,709,100.00 and Y = 396,080.00; thence South 7,375.00 feet to a point having Coordinates of X = 2,709,100.00 and Y = 388,705.00; thence West 14,750.00 feet to a point having Coordinates of X = 2,694,350.00 and Y = 388,705.00; thence North 7,375.00 feet to the Northwest corner of Block 65 having Coordinates of X = 2,694,350.00 and Y = 396,080.00; thence East 14,750.00 feet to the point of beginning, containing approximately **2,497.27 acres**, all as more particularly outlined on a plat on file in the Office of Mineral Resources, Department of Natural Resources, as provided by the applicant, as provided by the applicant. All bearings, distances and coordinates are based on Louisiana Coordinate System of 1927, (North or South Zone), where applicable.

NOTE: The above description of the Tract nominated for lease has been provided and corrected, where required, exclusively by the nomination party. Any mineral lease selected from this Tract and awarded by the Louisiana State Mineral Board shall be without warranty of any kind, either express, implied, or statutory, including, but not limited to, the implied warranties of merchantability and fitness for a particular purpose. Should the mineral lease awarded by the Louisiana State Mineral Board be subsequently modified, cancelled or abrogated due to the existence of conflicting leases, operating agreements, private claims or other future obligations or conditions which may affect all or any portion of the leased Tract, it shall not relieve the Lessee of the obligation to pay any bonus due thereon to the Louisiana State Mineral Board, nor shall the Louisiana State Mineral Board be obligated to refund any consideration paid by the Lessor prior to such modification, cancellation, or abrogation, including, but not limited to, bonuses, rentals and royalties.

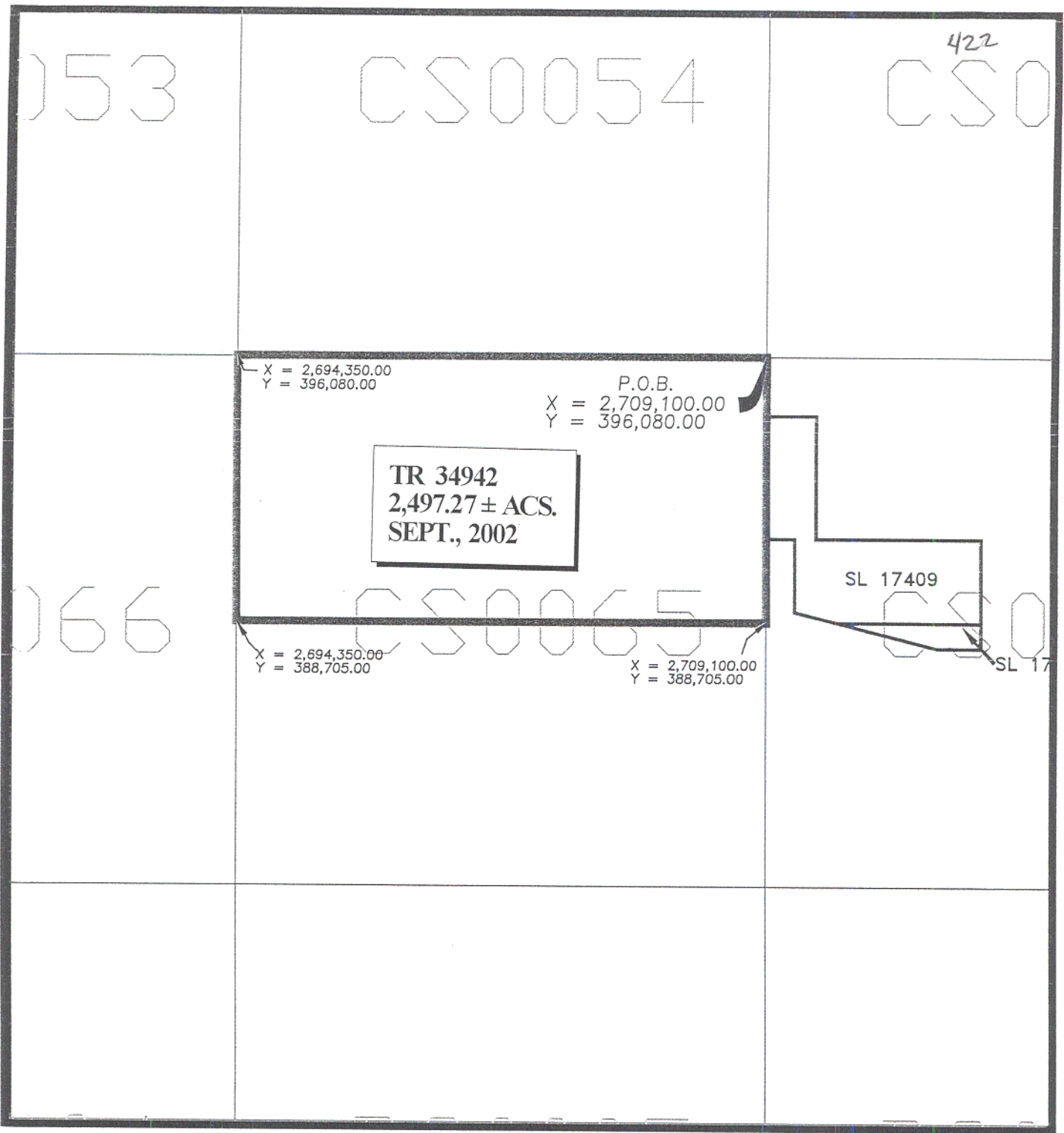
NOTE: The Office of Mineral Resources will require a minimum bonus of \$190 per acre and a minimum bonus of 22%.

NOTE: The State of Louisiana does hereby reserve, and this lease shall be subject to, the imprescriptible right of surface use in the nature of a servitude in favor of the Department of Natural Resources, including its Offices and Commissions, for the sole purpose of implementing, constructing, servicing and maintaining approved coastal zone management and/or restoration projects. Utilization of any and all rights derived under this lease by the mineral lessee, its agents, successors or assigns, shall not interfere with nor hinder the reasonable surface use by the

Department of Natural Resources, its Offices or Commissions, as herein above reserved.

Applicant: Houston McNutt

Bidder	Cash Payment	Price / Acre	Rental	Oil	Gas	Other



CHANDELEUR SOUND AREA
ST. BERNARD PARISH, LOUISIANA

SCALE: 1" = 4000'

TRACT 34943 - Portion of Block 65, Chandeleur Sound Area, St. Bernard Parish, Louisiana

All of the lands now or formerly constituting the beds and bottoms of all water bodies of every nature and description, and all islands and other lands formed by accretion, where allowed by law, or by reliction, and excepting tax adjudicated lands, belonging to the State of Louisiana and not presently under mineral lease on September 11, 2002, situated in St. Bernard Parish, Louisiana, and more particularly described as follows: Beginning at a point being the Southeast corner of Block 65, Chandeleur Sound Area, having Coordinates of X = 2,709,100.00 and Y = 381,330.00; thence West 14,750.00 feet to the Southwest corner of Block 65 to a point having Coordinates of X = 2,694,350.00 and Y = 381,330.00; thence North 7,375.00 feet to a point having Coordinates of X = 2,694,350.00 and Y = 388,705.00; thence East 14,750.00 feet to a point having Coordinates of X = 2,709,100.00 and Y = 388,705.00; thence South 7,375.00 feet to the point of beginning, containing approximately **2,497.27 acres**, all as more particularly outlined on a plat on file in the Office of Mineral Resources, Department of Natural Resources, as provided by the applicant. All bearings, distances and coordinates are based on Louisiana Coordinate System of 1927, (North or South Zone), where applicable.

NOTE: The above description of the Tract nominated for lease has been provided and corrected, where required, exclusively by the nomination party. Any mineral lease selected from this Tract and awarded by the Louisiana State Mineral Board shall be without warranty of any kind, either express, implied, or statutory, including, but not limited to, the implied warranties of merchantability and fitness for a particular purpose. Should the mineral lease awarded by the Louisiana State Mineral Board be subsequently modified, cancelled or abrogated due to the existence of conflicting leases, operating agreements, private claims or other future obligations or conditions which may affect all or any portion of the leased Tract, it shall not relieve the Lessee of the obligation to pay any bonus due thereon to the Louisiana State Mineral Board, nor shall the Louisiana State Mineral Board be obligated to refund any consideration paid by the Lessor prior to such modification, cancellation, or abrogation, including, but not limited to, bonuses, rentals and royalties.

NOTE: The Office of Mineral Resources will require a minimum bonus of \$190 per acre and a minimum royalty of 22%.

NOTE: The State of Louisiana does hereby reserve, and this lease shall be subject to, the imprescriptible right of surface use in the nature of a servitude in favor of the Department of Natural Resources, including its Offices and Commissions, for the sole purpose of implementing, constructing, servicing and maintaining approved coastal zone management and/or restoration projects. Utilization of any and all rights derived under this lease by the mineral lessee, its agents, successors or assigns, shall not interfere with nor hinder the reasonable surface use by the Department of Natural Resources, its Offices or Commissions, as herein above reserved.

Applicant: Houston McNutt

Bidder	Cash Payment	Price / Acre	Rental	Oil	Gas	Other

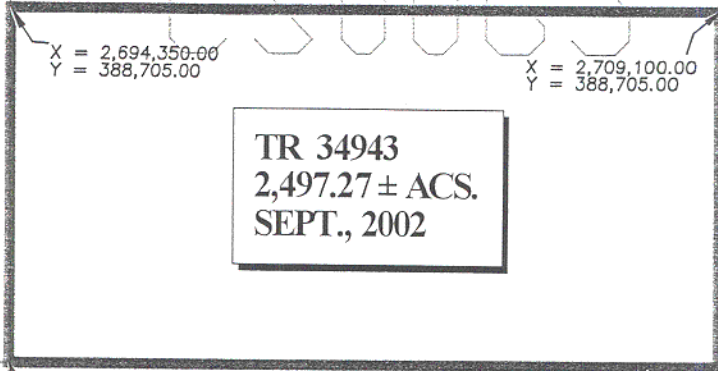


425

066

BS0005

BS0



SL 17409

SL

P.O.B.

$X = 2,709,100.00$
 $Y = 381,330.00$

004

BS0005

BS0

CHANDELEUR SOUND AREA
ST. BERNARD PARISH, LOUISIANA

SCALE: 1" = 4000'

TRACT 34944 - Portion of Block 55, Chandeleur Sound Area, St. Bernard Parish, Louisiana

All of the lands now or formerly constituting the beds and bottoms of all water bodies of every nature and description, and all islands and other lands formed by accretion, where allowed by law, or by reliction, and excepting tax adjudicated lands, belonging to the State of Louisiana and not presently under mineral lease on September 11, 2002, situated in St. Bernard Parish, Louisiana, and more particularly described as follows: Beginning at a point being the Northeast corner of Block 55, Chandeleur Sound Area, having Coordinates of X = 2,723,850.00 and Y = 410,830.00; thence South 7,375.00 feet to a point having Coordinates of X = 2,723,850.00 and Y = 403,455.00; thence West 14,750.00 feet to a point having Coordinates of X = 2,709,100.00 and Y = 403,455.00; thence North 7,375.00 feet to the Northwest corner of Block 55 having Coordinates of X = 2,709,100.00 and Y = 410,830.00; thence East 14,750.00 feet to the point of beginning, containing approximately **2,497.27 acres**, all as more particularly outlined on a plat on file in the Office of Mineral Resources, Department of Natural Resources, as provided by the applicant. All bearings, distances and coordinates are based on Louisiana Coordinate System of 1927, (North or South Zone), where applicable.

NOTE: The above description of the Tract nominated for lease has been provided and corrected, where required, exclusively by the nomination party. Any mineral lease selected from this Tract and awarded by the Louisiana State Mineral Board shall be without warranty of any kind, either express, implied, or statutory, including, but not limited to, the implied warranties of merchantability and fitness for a particular purpose. Should the mineral lease awarded by the Louisiana State Mineral Board be subsequently modified, cancelled or abrogated due to the existence of conflicting leases, operating agreements, private claims or other future obligations or conditions which may affect all or any portion of the leased Tract, it shall not relieve the Lessee of the obligation to pay any bonus due thereon to the Louisiana State Mineral Board, nor shall the Louisiana State Mineral Board be obligated to refund any consideration paid by the Lessor prior to such modification, cancellation, or abrogation, including, but not limited to, bonuses, rentals and royalties.

NOTE: The Office of Mineral Resources will require a minimum bonus of \$230 per acre and a minimum bonus of 23%.

NOTE: The State of Louisiana does hereby reserve, and this lease shall be subject to, the imprescriptible right of surface use in the nature of a servitude in favor of the Department of Natural Resources, including its Offices and Commissions, for the sole purpose of implementing, constructing, servicing and maintaining approved coastal zone management and/or restoration projects. Utilization of any and all rights derived under this lease by the mineral lessee, its agents, successors or assigns, shall not interfere with nor hinder the reasonable surface use by the Department of Natural Resources, its Offices or Commissions, as herein above reserved.

Applicant: Houston McNutt

Bidder	Cash Payment	Price / Acre	Rental	Oil	Gas	Other



039

CS0038

428

CS0

X = 2,709,100.00
Y = 410,830.00

P.O.B.
X = 2,723,850.00
Y = 410,830.00

TR 34944
2,497.27 ± ACS.
SEPT., 2002

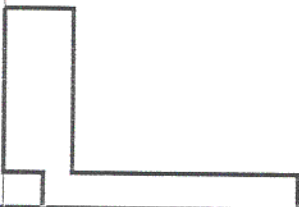
054

CS0055

CS0

X = 2,709,100.00
Y = 403,455.00

X = 2,723,850.00
Y = 403,455.00



CHANDELEUR SOUND AREA
ST. BERNARD PARISH, LOUISIANA

SCALE: 1" = 4000'

TRACT 34945 - Portion of Block 55, Chandeleur Sound Area, St. Bernard Parish, Louisiana

All of the lands now or formerly constituting the beds and bottoms of all water bodies of every nature and description, and all islands and other lands formed by accretion, where allowed by law, or by reliction, and excepting tax adjudicated lands, belonging to the State of Louisiana and not presently under mineral lease on September 11, 2002, situated in St. Bernard Parish, Louisiana, and more particularly described as follows: Beginning at a point being the Southeast corner of Block 55, Chandeleur Sound Area, having Coordinates of X = 2,723,850.00 and Y = 396,080.00; thence West 14,750.00 feet to the Southwest corner of Block 55 to a point having Coordinates of X = 2,709,100.00 and Y = 396,080.00; thence North 7,375.00 feet to a point having Coordinates of X = 2,709,100.00 and Y = 403,455.00; thence East 14,750.00 feet to a point having Coordinates of X = 2,723,850.00 and Y = 403,455.00; thence South 7,375.00 feet to the point of beginning, containing approximately **2,497.27 acres**, all as more particularly outlined on a plat on file in the Office of Mineral Resources, Department of Natural Resources, as provided by the applicant. All bearings, distances and coordinates are based on Louisiana Coordinate System of 1927, (North or South Zone), where applicable.

NOTE: The above description of the Tract nominated for lease has been provided and corrected, where required, exclusively by the nomination party. Any mineral lease selected from this Tract and awarded by the Louisiana State Mineral Board shall be without warranty of any kind, either express, implied, or statutory, including, but not limited to, the implied warranties of merchantability and fitness for a particular purpose. Should the mineral lease awarded by the Louisiana State Mineral Board be subsequently modified, cancelled or abrogated due to the existence of conflicting leases, operating agreements, private claims or other future obligations or conditions which may affect all or any portion of the leased Tract, it shall not relieve the Lessee of the obligation to pay any bonus due thereon to the Louisiana State Mineral Board, nor shall the Louisiana State Mineral Board be obligated to refund any consideration paid by the Lessor prior to such modification, cancellation, or abrogation, including, but not limited to, bonuses, rentals and royalties.

NOTE: The Office of Mineral Resources will require a minimum bonus of \$230 per acre and a minimum bonus of 23%.

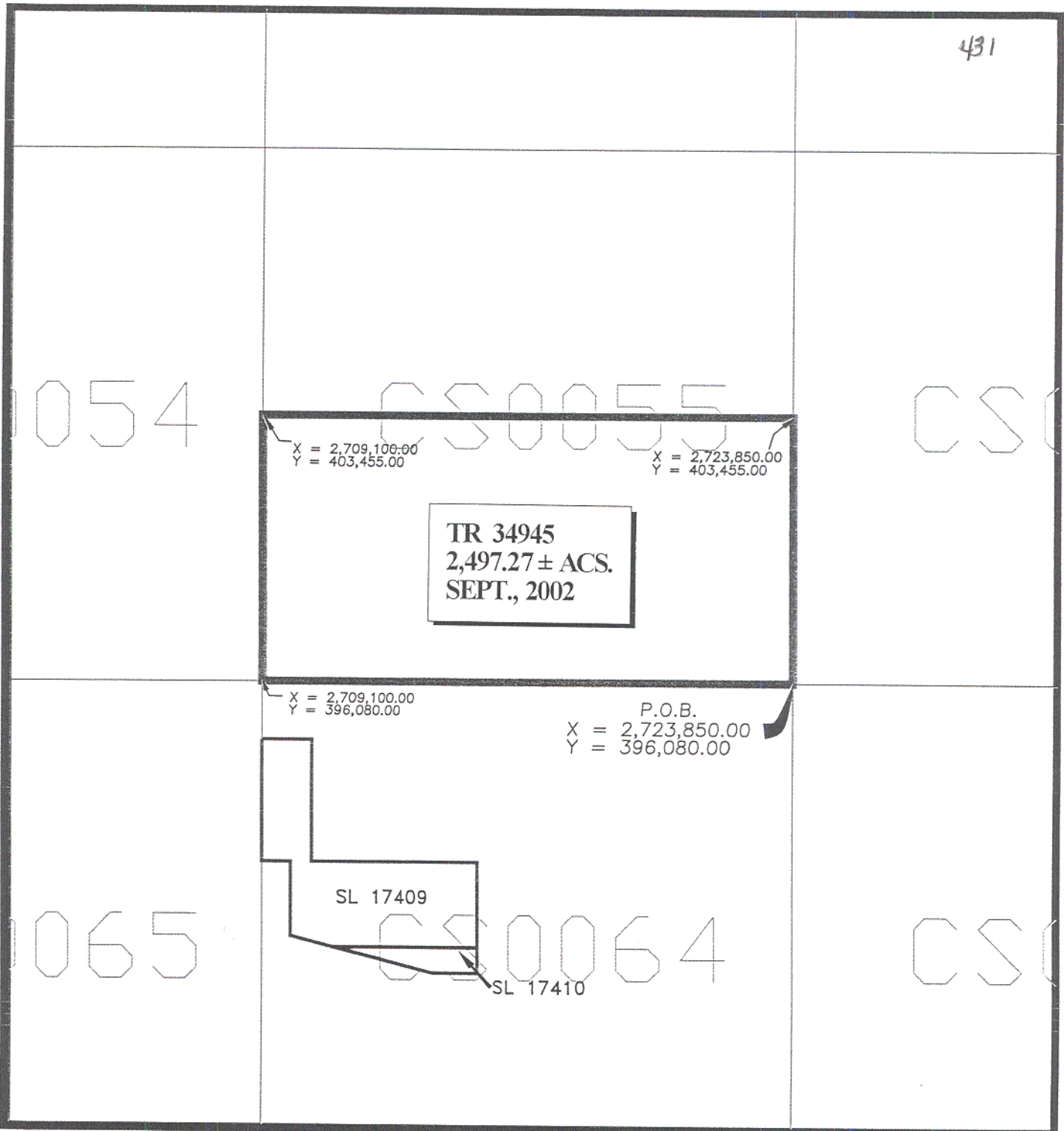
NOTE: The State of Louisiana does hereby reserve, and this lease shall be subject to, the imprescriptible right of surface use in the nature of a servitude in favor of the Department of Natural Resources, including its Offices and Commissions, for the sole purpose of implementing, constructing, servicing and maintaining approved coastal zone management and/or restoration projects. Utilization of any and all rights derived under this lease by the mineral lessee, its agents, successors or assigns, shall not interfere with nor hinder the reasonable surface use by the Department of Natural Resources, its Offices or Commissions, as herein above reserved.

Applicant: Houston McNutt

Bidder	Cash Payment	Price / Acre	Rental	Oil	Gas	Other



431



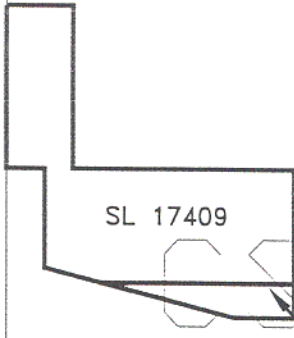
X = 2,709,100.00
Y = 403,455.00

X = 2,723,850.00
Y = 403,455.00

TR 34945
2,497.27 ± ACS.
SEPT., 2002

X = 2,709,100.00
Y = 396,080.00

P.O.B.
X = 2,723,850.00
Y = 396,080.00



SL 17409

SL 17410

CHANDELEUR SOUND AREA
ST. BERNARD PARISH, LOUISIANA

SCALE: 1" = 4000'